



# Full wwPDB X-ray Structure Validation Report ⓘ

Feb 28, 2018 – 09:46 AM EST

PDB ID : 3R5B  
Title : Pseudomonas aeruginosa DapD (PA3666) in complex with L-2-aminopimelate  
Authors : Sandalova, T.; Schnell, R.; Schneider, G.  
Deposited on : 2011-03-18  
Resolution : 2.51 Å(reported)

This is a Full wwPDB X-ray Structure Validation Report for a publicly released PDB entry.

We welcome your comments at [validation@mail.wwpdb.org](mailto:validation@mail.wwpdb.org)

A user guide is available at

<http://wwpdb.org/validation/2016/XrayValidationReportHelp>

with specific help available everywhere you see the ⓘ symbol.

---

The following versions of software and data (see [references ⓘ](#)) were used in the production of this report:

MolProbity : 4.02b-467  
Mogul : 1.7.2 (RC1), CSD as538be (2017)  
Xtriage (Phenix) : 1.9-1692  
EDS : rb-20030736  
Percentile statistics : 20161228.v01 (using entries in the PDB archive December 28th 2016)  
Refmac : 5.8.0135  
CCP4 : 6.5.0  
Ideal geometry (proteins) : Engh & Huber (2001)  
Ideal geometry (DNA, RNA) : Parkinson et al. (1996)  
Validation Pipeline (wwPDB-VP) : rb-20030736

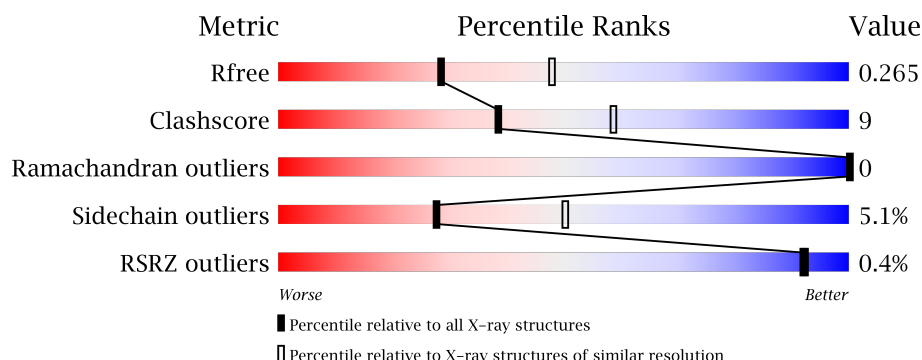
# 1 Overall quality at a glance ⓘ

The following experimental techniques were used to determine the structure:

*X-RAY DIFFRACTION*

The reported resolution of this entry is 2.51 Å.

Percentile scores (ranging between 0-100) for global validation metrics of the entry are shown in the following graphic. The table shows the number of entries on which the scores are based.




Metric	Whole archive (#Entries)	Similar resolution (#Entries, resolution range(Å))
$R_{free}$	100719	3846 (2.50-2.50)
Clashscore	112137	4554 (2.50-2.50)
Ramachandran outliers	110173	4463 (2.50-2.50)
Sidechain outliers	110143	4465 (2.50-2.50)
RSRZ outliers	101464	3876 (2.50-2.50)

The table below summarises the geometric issues observed across the polymeric chains and their fit to the electron density. The red, orange, yellow and green segments on the lower bar indicate the fraction of residues that contain outliers for  $\geq 3$ , 2, 1 and 0 types of geometric quality criteria. A grey segment represents the fraction of residues that are not modelled. The numeric value for each fraction is indicated below the corresponding segment, with a dot representing fractions  $\leq 5\%$ . The upper red bar (where present) indicates the fraction of residues that have poor fit to the electron density. The numeric value is given above the bar.

Mol	Chain	Length	Quality of chain
1	A	347	
1	B	347	
1	C	347	
1	D	347	
1	E	347	

*Continued on next page...*

*Continued from previous page...*

Mol	Chain	Length	Quality of chain
1	F	347	 A horizontal bar chart showing the quality of chain F. The bar is divided into three segments: green (72%), yellow (18%), and grey (7%). The percentages are labeled below the bar segments.

## 2 Entry composition

There are 3 unique types of molecules in this entry. The entry contains 14397 atoms, of which 0 are hydrogens and 0 are deuteriums.

In the tables below, the ZeroOcc column contains the number of atoms modelled with zero occupancy, the AltConf column contains the number of residues with at least one atom in alternate conformation and the Trace column contains the number of residues modelled with at most 2 atoms.

- Molecule 1 is a protein called Tetrahydrodipicolinate N-succinyletransferase.

Mol	Chain	Residues	Atoms					ZeroOcc	AltConf	Trace
1	A	321	Total	C	N	O	S	0	0	0
			2364	1506	406	445	7			
1	B	318	Total	C	N	O	S	0	0	0
			2342	1492	403	440	7			
1	C	321	Total	C	N	O	S	0	0	0
			2367	1506	407	447	7			
1	D	321	Total	C	N	O	S	0	0	0
			2364	1506	406	445	7			
1	E	310	Total	C	N	O	S	0	0	0
			2277	1455	386	429	7			
1	F	321	Total	C	N	O	S	0	0	0
			2367	1506	407	447	7			

There are 18 discrepancies between the modelled and reference sequences:

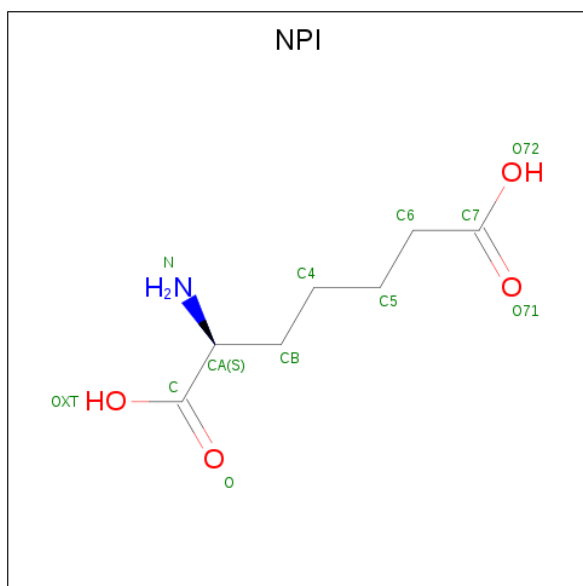
Chain	Residue	Modelled	Actual	Comment	Reference
A	-2	GLY	-	EXPRESSION TAG	UNP Q9Z9H2
A	-1	SER	-	EXPRESSION TAG	UNP Q9Z9H2
A	0	HIS	-	EXPRESSION TAG	UNP Q9Z9H2
B	-2	GLY	-	EXPRESSION TAG	UNP Q9Z9H2
B	-1	SER	-	EXPRESSION TAG	UNP Q9Z9H2
B	0	HIS	-	EXPRESSION TAG	UNP Q9Z9H2
C	-2	GLY	-	EXPRESSION TAG	UNP Q9Z9H2
C	-1	SER	-	EXPRESSION TAG	UNP Q9Z9H2
C	0	HIS	-	EXPRESSION TAG	UNP Q9Z9H2
D	-2	GLY	-	EXPRESSION TAG	UNP Q9Z9H2
D	-1	SER	-	EXPRESSION TAG	UNP Q9Z9H2
D	0	HIS	-	EXPRESSION TAG	UNP Q9Z9H2
E	-2	GLY	-	EXPRESSION TAG	UNP Q9Z9H2
E	-1	SER	-	EXPRESSION TAG	UNP Q9Z9H2
E	0	HIS	-	EXPRESSION TAG	UNP Q9Z9H2
F	-2	GLY	-	EXPRESSION TAG	UNP Q9Z9H2
F	-1	SER	-	EXPRESSION TAG	UNP Q9Z9H2

*Continued on next page...*

Continued from previous page...

Chain	Residue	Modelled	Actual	Comment	Reference
F	0	HIS	-	EXPRESSION TAG	UNP Q9Z9H2

- Molecule 2 is (2S)-2-aminoheptanedioic acid (three-letter code: NPI) (formula:  $C_7H_{13}NO_4$ ).



Mol	Chain	Residues	Atoms				ZeroOcc	AltConf
2	A	1	Total	C	N	O	0	0
			12	7	1	4		
2	C	1	Total	C	N	O	0	0
			12	7	1	4		
2	D	1	Total	C	N	O	0	0
			12	7	1	4		
2	E	1	Total	C	N	O	0	0
			12	7	1	4		
2	E	1	Total	C	N	O	0	0
			12	7	1	4		

- Molecule 3 is water.

Mol	Chain	Residues	Atoms		ZeroOcc	AltConf
3	A	43	Total	O	0	0
			43	43		
3	B	53	Total	O	0	0
			53	53		
3	C	44	Total	O	0	0
			44	44		
3	D	36	Total	O	0	0
			36	36		

Continued on next page...

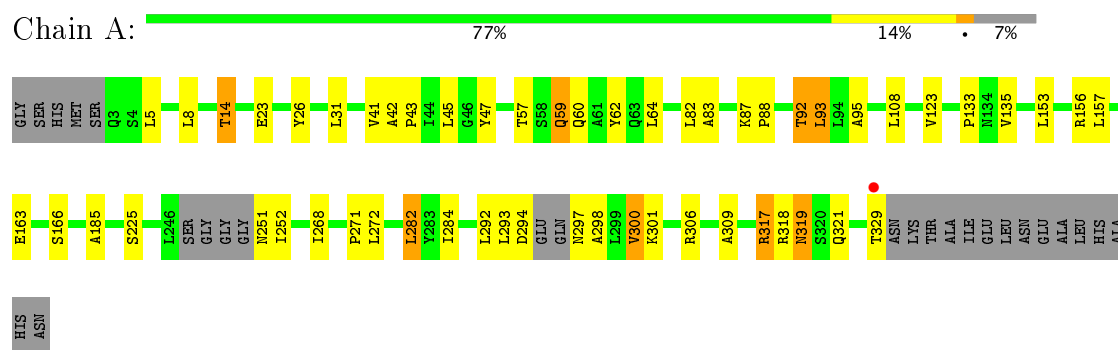
*Continued from previous page...*

Mol	Chain	Residues	Atoms		ZeroOcc	AltConf
3	E	47	Total	O	0	0
			47	47		
3	F	33	Total	O	0	0
			33	33		

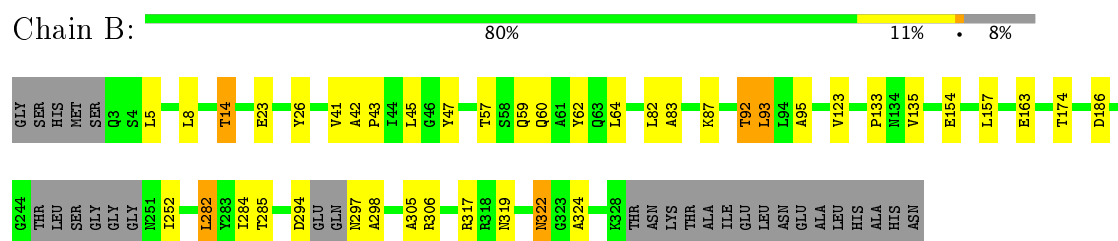
### 3 Residue-property plots

These plots are drawn for all protein, RNA and DNA chains in the entry. The first graphic for a chain summarises the proportions of the various outlier classes displayed in the second graphic. The second graphic shows the sequence view annotated by issues in geometry and electron density. Residues are color-coded according to the number of geometric quality criteria for which they contain at least one outlier: green = 0, yellow = 1, orange = 2 and red = 3 or more. A red dot above a residue indicates a poor fit to the electron density ( $RSRZ > 2$ ). Stretches of 2 or more consecutive residues without any outlier are shown as a green connector. Residues present in the sample, but not in the model, are shown in grey.

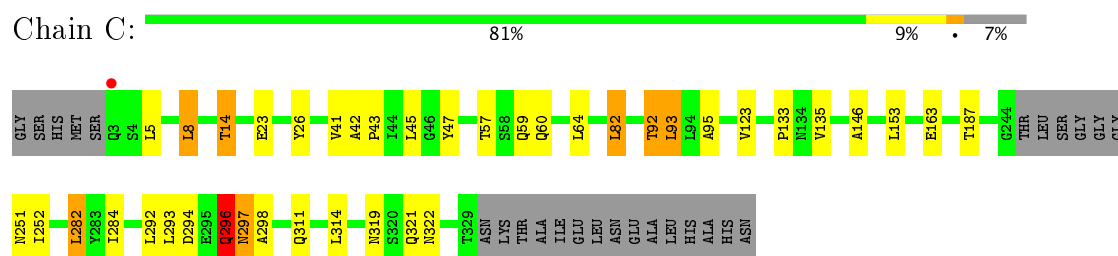
#### • Molecule 1: Tetrahydrodipicolinate N-succinyletransferase



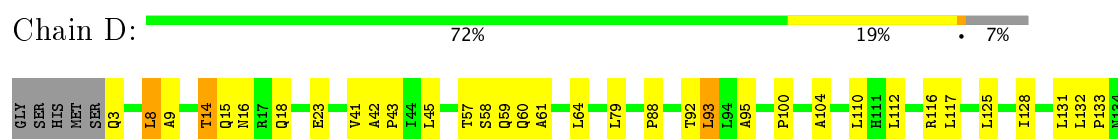
#### • Molecule 1: Tetrahydrodipicolinate N-succinyletransferase

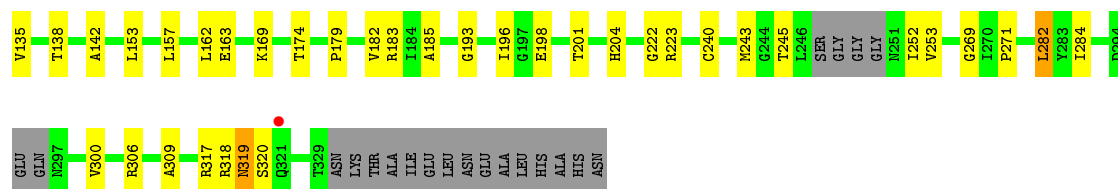


#### • Molecule 1: Tetrahydrodipicolinate N-succinyletransferase

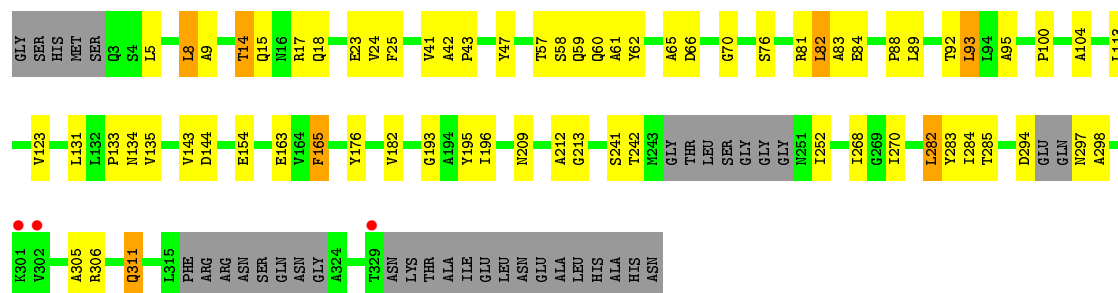


#### • Molecule 1: Tetrahydrodipicolinate N-succinyletransferase

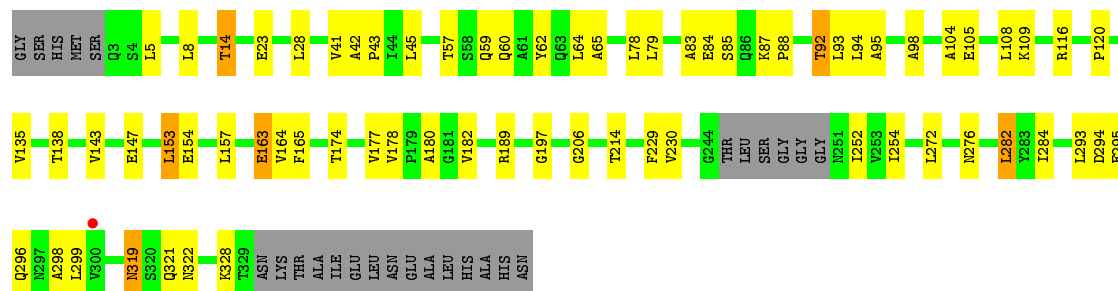




• Molecule 1: Tetrahydrodipicolinate N-succinyletransferase



• Molecule 1: Tetrahydrodipicolinate N-succinyletransferase





## 4 Data and refinement statistics

Property	Value	Source
Space group	P 1 21 1	Depositor
Cell constants a, b, c, $\alpha$ , $\beta$ , $\gamma$	83.04Å 102.00Å 134.90Å 90.00° 89.97° 90.00°	Depositor
Resolution (Å)	36.88 – 2.51 36.88 – 2.51	Depositor EDS
% Data completeness (in resolution range)	93.9 (36.88-2.51) 97.3 (36.88-2.51)	Depositor EDS
$R_{merge}$	0.14	Depositor
$R_{sym}$	0.14	Depositor
$\langle I/\sigma(I) \rangle$ <sup>1</sup>	2.23 (at 2.51Å)	Xtriage
Refinement program	REFMAC 5.5.0109	Depositor
R, $R_{free}$	0.250 , 0.276 0.243 , 0.265	Depositor DCC
$R_{free}$ test set	3763 reflections (5.29%)	DCC
Wilson B-factor (Å <sup>2</sup> )	30.2	Xtriage
Anisotropy	0.202	Xtriage
Bulk solvent $k_{sol}$ (e/Å <sup>3</sup> ), $B_{sol}$ (Å <sup>2</sup> )	0.32 , 16.0	EDS
L-test for twinning <sup>2</sup>	$\langle  L  \rangle = 0.38$ , $\langle L^2 \rangle = 0.20$	Xtriage
Estimated twinning fraction	0.326 for h,-k,-l	Xtriage
Reported twinning fraction	0.545 for H, K, L 0.455 for h,-k,-l	Depositor
Outliers	0 of 74974 reflections	Xtriage
$F_o, F_c$ correlation	0.86	EDS
Total number of atoms	14397	wwPDB-VP
Average B, all atoms (Å <sup>2</sup> )	22.0	wwPDB-VP

Xtriage's analysis on translational NCS is as follows: *The largest off-origin peak in the Patterson function is 3.94% of the height of the origin peak. No significant pseudotranslation is detected.*

<sup>1</sup>Intensities estimated from amplitudes.

<sup>2</sup>Theoretical values of  $\langle |L| \rangle$ ,  $\langle L^2 \rangle$  for acentric reflections are 0.5, 0.333 respectively for untwinned datasets, and 0.375, 0.2 for perfectly twinned datasets.

## 5 Model quality [i](#)

### 5.1 Standard geometry [i](#)

Bond lengths and bond angles in the following residue types are not validated in this section: NPI

The Z score for a bond length (or angle) is the number of standard deviations the observed value is removed from the expected value. A bond length (or angle) with  $|Z| > 5$  is considered an outlier worth inspection. RMSZ is the root-mean-square of all Z scores of the bond lengths (or angles).

Mol	Chain	Bond lengths		Bond angles	
		RMSZ	$\# Z  > 5$	RMSZ	$\# Z  > 5$
1	A	0.51	0/2400	0.63	1/3257 (0.0%)
1	B	0.50	0/2378	0.61	0/3226
1	C	0.50	0/2404	0.66	3/3263 (0.1%)
1	D	0.54	0/2400	0.66	0/3257
1	E	0.54	1/2311 (0.0%)	0.67	0/3137
1	F	0.52	0/2404	0.66	0/3263
All	All	0.52	1/14297 (0.0%)	0.65	4/19403 (0.0%)

All (1) bond length outliers are listed below:

Mol	Chain	Res	Type	Atoms	Z	Observed(Å)	Ideal(Å)
1	E	163	GLU	CG-CD	5.69	1.60	1.51

All (4) bond angle outliers are listed below:

Mol	Chain	Res	Type	Atoms	Z	Observed(°)	Ideal(°)
1	C	296	GLN	CB-CA-C	-10.44	89.52	110.40
1	C	296	GLN	N-CA-C	8.64	134.34	111.00
1	C	297	ASN	N-CA-CB	6.55	122.39	110.60
1	A	300	VAL	CG1-CB-CG2	6.26	120.92	110.90

There are no chirality outliers.

There are no planarity outliers.

### 5.2 Too-close contacts [i](#)

In the following table, the Non-H and H(model) columns list the number of non-hydrogen atoms and hydrogen atoms in the chain respectively. The H(added) column lists the number of hydrogen atoms added and optimized by MolProbity. The Clashes column lists the number of clashes within

the asymmetric unit, whereas Symm-Clashes lists symmetry related clashes.

Mol	Chain	Non-H	H(model)	H(added)	Clashes	Symm-Clashes
1	A	2364	0	2420	39	0
1	B	2342	0	2395	32	0
1	C	2367	0	2417	32	0
1	D	2364	0	2420	46	0
1	E	2277	0	2335	48	0
1	F	2367	0	2417	56	0
2	A	12	0	11	1	0
2	C	12	0	11	1	0
2	D	12	0	11	0	0
2	E	24	0	22	0	0
3	A	43	0	0	3	0
3	B	53	0	0	4	0
3	C	44	0	0	2	0
3	D	36	0	0	2	0
3	E	47	0	0	1	0
3	F	33	0	0	1	0
All	All	14397	0	14459	245	0

The all-atom clashscore is defined as the number of clashes found per 1000 atoms (including hydrogen atoms). The all-atom clashscore for this structure is 9.

All (245) close contacts within the same asymmetric unit are listed below, sorted by their clash magnitude.

Atom-1	Atom-2	Interatomic distance (Å)	Clash overlap (Å)
1:C:296:GLN:O	1:C:296:GLN:HG3	1.49	1.10
1:D:182:VAL:HG11	1:D:196:ILE:HG21	1.46	0.95
1:D:3:GLN:HE22	1:D:95:ALA:HB1	1.37	0.90
1:C:296:GLN:O	1:C:296:GLN:CG	2.16	0.89
1:E:62:TYR:CE1	1:E:83:ALA:HB1	2.12	0.84
1:B:322:ASN:HD21	1:B:324:ALA:HB2	1.44	0.81
1:D:41:VAL:HG13	1:D:64:LEU:CD2	2.10	0.81
1:D:182:VAL:HG11	1:D:196:ILE:CG2	2.14	0.77
1:B:186:ASP:OD2	3:B:345:HOH:O	2.02	0.76
1:F:14:THR:HG22	1:F:23:GLU:OE1	1.89	0.73
1:E:252:ILE:O	1:E:252:ILE:HD12	1.90	0.71
1:D:252:ILE:O	1:D:252:ILE:HD12	1.90	0.71
1:C:14:THR:HG23	1:C:23:GLU:HG3	1.72	0.71
1:A:14:THR:HG23	1:A:23:GLU:HG3	1.74	0.70
1:D:41:VAL:HG13	1:D:64:LEU:HD22	1.74	0.70
1:B:14:THR:HG23	1:B:23:GLU:HG3	1.73	0.70

*Continued on next page...*

*Continued from previous page...*

Atom-1	Atom-2	Interatomic distance (Å)	Clash overlap (Å)
1:B:154:GLU:HG3	3:B:349:HOH:O	1.91	0.69
1:F:41:VAL:CG1	1:F:45:LEU:HD12	2.22	0.69
1:E:154:GLU:HG3	3:E:354:HOH:O	1.92	0.69
1:D:58:SER:O	1:D:61:ALA:HB3	1.92	0.69
1:F:282:LEU:HD22	1:F:284:ILE:HG23	1.73	0.68
1:F:14:THR:HG23	1:F:23:GLU:HG3	1.75	0.68
1:D:41:VAL:HG13	1:D:64:LEU:HD21	1.77	0.67
1:F:296:GLN:HG3	1:F:296:GLN:O	1.93	0.67
1:F:94:LEU:HD21	1:F:105:GLU:HG3	1.78	0.67
1:E:82:LEU:HG	1:E:89:LEU:HD22	1.76	0.66
1:E:282:LEU:HD22	1:E:284:ILE:HG23	1.77	0.66
1:D:3:GLN:NE2	1:D:95:ALA:HB1	2.09	0.65
1:D:182:VAL:CG1	1:D:196:ILE:HG21	2.25	0.65
1:D:16:ASN:ND2	1:D:18:GLN:HE21	1.95	0.65
1:D:271:PRO:HD2	1:D:309:ALA:HB1	1.78	0.64
1:F:57:THR:HG22	1:F:60:GLN:HG3	1.80	0.64
1:B:252:ILE:HD12	1:B:252:ILE:O	1.98	0.64
1:A:252:ILE:HD12	1:A:252:ILE:O	1.98	0.64
1:F:5:LEU:HD22	1:F:95:ALA:HA	1.79	0.64
1:D:133:PRO:O	1:D:135:VAL:HG23	1.98	0.63
1:D:92:THR:C	1:D:93:LEU:HD23	2.19	0.63
1:C:251:ASN:HB3	1:E:70:GLY:HA2	1.80	0.63
1:D:8:LEU:HD12	1:D:9:ALA:N	2.13	0.63
1:E:133:PRO:O	1:E:135:VAL:HG23	1.98	0.63
1:F:282:LEU:HD22	1:F:284:ILE:CG2	2.28	0.62
1:E:15:GLN:NE2	1:E:88:PRO:HG3	2.15	0.62
1:F:294:ASP:OD2	1:F:298:ALA:HB3	1.99	0.62
1:B:319:ASN:HD22	1:B:322:ASN:H	1.46	0.62
1:B:322:ASN:HD21	1:B:324:ALA:CB	2.12	0.61
1:C:252:ILE:HD12	1:C:252:ILE:O	2.01	0.61
1:D:112:LEU:HD23	1:D:117:LEU:HD12	1.83	0.61
1:E:14:THR:HG23	1:E:23:GLU:HG3	1.82	0.60
1:D:41:VAL:HG12	1:D:45:LEU:HD12	1.84	0.60
1:E:58:SER:O	1:E:61:ALA:HB3	2.01	0.60
1:E:57:THR:HG22	1:E:60:GLN:HG3	1.83	0.60
1:F:319:ASN:HD22	1:F:321:GLN:H	1.50	0.60
2:C:381:NPI:HA	3:C:369:HOH:O	2.01	0.59
1:F:252:ILE:O	1:F:252:ILE:HD12	2.02	0.59
1:D:93:LEU:HD23	1:D:93:LEU:N	2.17	0.59
1:E:15:GLN:HE21	1:E:88:PRO:HG3	1.66	0.59
1:F:293:LEU:HD23	1:F:299:LEU:HA	1.85	0.59

*Continued on next page...*

*Continued from previous page...*

Atom-1	Atom-2	Interatomic distance (Å)	Clash overlap (Å)
1:A:251:ASN:ND2	3:A:370:HOH:O	2.33	0.59
1:D:112:LEU:HD23	1:D:117:LEU:CD1	2.32	0.58
1:E:100:PRO:O	1:E:131:LEU:HD11	2.03	0.58
1:C:57:THR:HG22	1:C:60:GLN:HG3	1.85	0.57
1:F:41:VAL:HG13	1:F:45:LEU:HD12	1.85	0.57
1:F:62:TYR:CZ	1:F:83:ALA:HB1	2.40	0.57
1:E:62:TYR:CZ	1:E:83:ALA:HB1	2.39	0.57
1:D:64:LEU:HB3	1:D:79:LEU:HD13	1.87	0.56
1:E:57:THR:HG23	1:E:59:GLN:N	2.20	0.56
1:F:8:LEU:HB2	1:F:93:LEU:HD22	1.87	0.56
1:E:311:GLN:HE21	1:E:311:GLN:HA	1.71	0.56
1:B:57:THR:HG22	1:B:60:GLN:HG3	1.86	0.56
1:E:294:ASP:OD2	1:E:298:ALA:HB3	2.07	0.55
1:C:14:THR:HG22	1:C:23:GLU:OE1	2.07	0.55
1:A:41:VAL:HG22	1:A:64:LEU:HD22	1.88	0.55
1:D:174:THR:HG23	3:D:365:HOH:O	2.07	0.55
1:F:92:THR:C	1:F:93:LEU:HD23	2.27	0.55
1:C:311:GLN:HB2	1:C:314:LEU:HD11	1.89	0.55
1:A:293:LEU:O	1:A:329:THR:HG22	2.08	0.54
1:F:62:TYR:CE2	1:F:83:ALA:HB1	2.42	0.54
1:B:87:LYS:NZ	3:B:388:HOH:O	2.33	0.54
1:E:14:THR:CG2	1:E:23:GLU:OE1	2.55	0.54
1:F:138:THR:HG22	1:F:164:VAL:HG22	1.89	0.54
1:E:57:THR:CG2	1:E:60:GLN:H	2.21	0.54
1:F:296:GLN:CG	1:F:296:GLN:O	2.55	0.54
1:A:14:THR:CG2	1:A:23:GLU:OE1	2.56	0.54
1:F:14:THR:CG2	1:F:23:GLU:OE1	2.55	0.54
1:C:14:THR:CG2	1:C:23:GLU:OE1	2.56	0.53
1:B:282:LEU:HD22	1:B:284:ILE:HG23	1.91	0.53
1:C:282:LEU:HD22	1:C:284:ILE:HG23	1.89	0.53
1:D:138:THR:HB	1:D:162:LEU:HD11	1.89	0.53
1:F:98:ALA:O	1:F:109:LYS:NZ	2.42	0.53
1:A:14:THR:HG22	1:A:23:GLU:OE1	2.09	0.53
1:F:120:PRO:HG2	1:F:229:PHE:CD1	2.44	0.53
1:B:14:THR:HG22	1:B:23:GLU:OE1	2.09	0.52
1:F:214:THR:HG22	1:F:230:VAL:HB	1.91	0.52
1:F:189:ARG:HD3	1:F:206:GLY:O	2.09	0.52
1:E:113:LEU:HD13	1:E:193:GLY:O	2.10	0.52
1:E:8:LEU:HD12	1:E:8:LEU:C	2.29	0.52
1:F:92:THR:HG21	1:F:104:ALA:HB1	1.91	0.52
1:B:14:THR:CG2	1:B:23:GLU:OE1	2.58	0.51

*Continued on next page...*

*Continued from previous page...*

Atom-1	Atom-2	Interatomic distance (Å)	Clash overlap (Å)
1:F:41:VAL:HG13	1:F:45:LEU:CD1	2.40	0.51
1:F:295:GLU:O	1:F:296:GLN:HB3	2.09	0.51
1:A:57:THR:HG22	1:A:60:GLN:HG3	1.91	0.51
1:E:182:VAL:HG11	1:E:196:ILE:HG21	1.93	0.51
1:C:26:TYR:OH	1:C:92:THR:HG21	2.11	0.51
1:A:157:LEU:HD21	1:C:82:LEU:HD12	1.93	0.51
1:D:282:LEU:HD22	1:D:284:ILE:HG23	1.93	0.50
1:D:8:LEU:C	1:D:8:LEU:HD12	2.31	0.50
1:E:165:PHE:CE2	1:F:163:GLU:HG3	2.46	0.50
1:D:42:ALA:HB3	1:D:43:PRO:HD3	1.91	0.50
1:F:28:LEU:HD12	1:F:78:LEU:HD22	1.94	0.50
1:A:82:LEU:HD23	1:B:157:LEU:HD21	1.94	0.50
1:B:133:PRO:O	1:B:135:VAL:HG23	2.12	0.50
1:C:41:VAL:HG22	1:C:64:LEU:HD22	1.93	0.50
1:F:252:ILE:HD13	1:F:254:ILE:HD11	1.94	0.50
1:A:41:VAL:CG1	1:A:45:LEU:HD12	2.42	0.49
1:A:319:ASN:HD22	1:A:321:GLN:H	1.58	0.49
1:C:5:LEU:HD22	1:C:95:ALA:HA	1.93	0.49
1:F:147:GLU:HG3	3:F:357:HOH:O	2.12	0.49
1:F:87:LYS:HB3	1:F:88:PRO:HD2	1.95	0.49
1:A:57:THR:HG23	1:A:59:GLN:N	2.27	0.49
1:A:271:PRO:HD2	1:A:309:ALA:HB1	1.93	0.49
1:B:174:THR:HG23	3:B:378:HOH:O	2.12	0.49
1:C:319:ASN:HD22	1:C:322:ASN:H	1.60	0.49
1:B:322:ASN:ND2	1:B:324:ALA:HB2	2.19	0.48
1:D:100:PRO:O	1:D:131:LEU:HD11	2.12	0.48
1:D:57:THR:HG22	1:D:60:GLN:HG3	1.94	0.48
1:B:57:THR:HG23	1:B:59:GLN:N	2.29	0.48
1:B:285:THR:O	1:B:305:ALA:HB3	2.14	0.48
1:B:41:VAL:HG22	1:B:64:LEU:HD22	1.95	0.48
1:C:57:THR:HG23	1:C:59:GLN:N	2.29	0.48
1:B:26:TYR:OH	1:B:92:THR:HG21	2.12	0.48
1:A:31:LEU:N	3:A:386:HOH:O	2.32	0.48
1:D:16:ASN:ND2	1:D:18:GLN:NE2	2.59	0.48
1:F:153:LEU:HD22	1:F:157:LEU:CD1	2.43	0.48
1:F:62:TYR:O	1:F:65:ALA:HB3	2.13	0.48
1:A:41:VAL:HG13	1:A:45:LEU:HD12	1.96	0.47
1:D:183:ARG:HB2	1:D:201:THR:HG23	1.96	0.47
1:C:319:ASN:HD21	1:C:321:GLN:HB2	1.79	0.47
1:C:146:ALA:HB3	3:C:363:HOH:O	2.12	0.47
1:E:143:VAL:HG12	1:E:144:ASP:O	2.14	0.47

*Continued on next page...*

*Continued from previous page...*

Atom-1	Atom-2	Interatomic distance (Å)	Clash overlap (Å)
1:C:47:TYR:CG	1:C:93:LEU:HD12	2.50	0.47
1:E:57:THR:HG22	1:E:60:GLN:H	1.78	0.47
1:B:5:LEU:HD22	1:B:95:ALA:HA	1.96	0.47
1:E:209:ASN:O	1:E:212:ALA:HB3	2.15	0.47
1:F:14:THR:HB	1:F:87:LYS:NZ	2.30	0.47
1:C:41:VAL:CG1	1:C:45:LEU:HD12	2.45	0.47
1:A:282:LEU:HD22	1:A:284:ILE:HG23	1.96	0.47
1:A:5:LEU:HD22	1:A:95:ALA:HA	1.97	0.47
1:E:92:THR:HG21	1:E:104:ALA:HB1	1.95	0.47
1:C:93:LEU:HD23	1:C:93:LEU:N	2.29	0.47
1:F:135:VAL:HG13	1:F:143:VAL:O	2.16	0.46
1:C:47:TYR:CD2	1:C:93:LEU:HD12	2.51	0.46
1:F:64:LEU:CB	1:F:79:LEU:HD13	2.46	0.46
1:A:42:ALA:HB3	1:A:43:PRO:HD3	1.97	0.46
1:C:296:GLN:O	1:C:297:ASN:ND2	2.48	0.46
1:F:174:THR:HG22	1:F:178:VAL:HG22	1.98	0.46
1:D:57:THR:HG23	1:D:59:GLN:H	1.80	0.46
1:C:294:ASP:OD2	1:C:298:ALA:HB3	2.16	0.45
1:D:57:THR:HG23	1:D:59:GLN:N	2.30	0.45
1:E:24:VAL:HG12	1:E:25:PHE:N	2.31	0.45
1:A:26:TYR:OH	1:A:92:THR:HG21	2.16	0.45
1:B:41:VAL:HG13	1:B:45:LEU:HD12	1.97	0.45
1:E:65:ALA:O	1:E:76:SER:OG	2.23	0.45
1:A:47:TYR:CD2	1:A:93:LEU:HD12	2.52	0.45
1:B:41:VAL:CG1	1:B:45:LEU:HD12	2.46	0.45
1:E:81:ARG:NH2	1:F:154:GLU:OE1	2.50	0.45
1:A:268:ILE:HG21	1:A:272:LEU:HD11	1.98	0.45
1:F:93:LEU:N	1:F:93:LEU:HD23	2.32	0.45
1:A:133:PRO:O	1:A:135:VAL:HG23	2.17	0.45
1:B:93:LEU:HD23	1:B:93:LEU:N	2.32	0.45
1:D:116:ARG:NH2	1:D:179:PRO:HB2	2.32	0.45
1:D:185:ALA:HB1	1:D:204:HIS:CE1	2.52	0.45
1:A:47:TYR:CG	1:A:93:LEU:HD12	2.52	0.44
1:D:135:VAL:HG11	1:D:142:ALA:HB1	1.99	0.44
1:E:285:THR:O	1:E:305:ALA:HB3	2.17	0.44
1:F:64:LEU:HB3	1:F:79:LEU:HD13	1.99	0.44
1:F:14:THR:HB	1:F:87:LYS:CE	2.47	0.44
1:A:225:SER:HB3	2:A:381:NPI:OXT	2.18	0.44
1:B:47:TYR:CG	1:B:93:LEU:HD12	2.52	0.44
1:D:132:LEU:O	1:D:169:LYS:NZ	2.32	0.44
1:D:182:VAL:CG1	1:D:196:ILE:CG2	2.91	0.44

*Continued on next page...*

*Continued from previous page...*

Atom-1	Atom-2	Interatomic distance (Å)	Clash overlap (Å)
1:B:294:ASP:OD2	1:B:298:ALA:HB3	2.18	0.44
1:A:294:ASP:OD2	1:A:298:ALA:HB3	2.18	0.44
1:A:319:ASN:ND2	1:A:321:GLN:H	2.16	0.44
1:D:110:LEU:HD22	1:D:193:GLY:HA3	2.00	0.44
1:E:17:ARG:HB2	1:E:18:GLN:OE1	2.18	0.44
1:B:47:TYR:CD2	1:B:93:LEU:HD12	2.52	0.44
1:C:292:LEU:O	1:C:293:LEU:HD23	2.18	0.44
1:C:42:ALA:HB3	1:C:43:PRO:HD3	2.00	0.44
1:D:15:GLN:NE2	1:D:88:PRO:HG3	2.33	0.44
1:A:317:ARG:HG3	1:A:318:ARG:N	2.31	0.43
1:B:57:THR:HG23	1:B:59:GLN:H	1.82	0.43
1:E:8:LEU:HD12	1:E:9:ALA:N	2.33	0.43
1:A:185:ALA:N	3:A:377:HOH:O	2.51	0.43
1:A:93:LEU:HD23	1:A:93:LEU:N	2.33	0.43
1:D:157:LEU:HD23	1:F:85:SER:HB2	2.00	0.43
1:F:252:ILE:HD13	1:F:254:ILE:CD1	2.48	0.43
1:F:321:GLN:O	1:F:322:ASN:ND2	2.51	0.43
1:A:156:ARG:NH1	1:C:23:GLU:OE2	2.51	0.43
1:C:57:THR:HG23	1:C:59:GLN:H	1.82	0.43
1:A:166:SER:HA	1:C:187:THR:HG23	2.00	0.43
1:F:108:LEU:O	1:F:108:LEU:HD12	2.19	0.43
1:F:42:ALA:N	1:F:43:PRO:CD	2.81	0.43
1:A:57:THR:HG23	1:A:59:GLN:H	1.84	0.43
1:E:57:THR:HG23	1:E:59:GLN:H	1.81	0.43
1:B:42:ALA:HB3	1:B:43:PRO:HD3	2.00	0.43
1:D:243:MET:HG2	1:D:269:GLY:HA2	2.01	0.42
1:E:42:ALA:N	1:E:43:PRO:CD	2.82	0.42
1:F:177:VAL:HG22	1:F:178:VAL:N	2.33	0.42
1:F:116:ARG:NH2	1:F:180:ALA:O	2.48	0.42
1:F:294:ASP:OD1	1:F:295:GLU:O	2.37	0.42
1:F:294:ASP:O	1:F:295:GLU:C	2.57	0.42
1:B:62:TYR:CE1	1:B:83:ALA:HB1	2.54	0.42
1:C:133:PRO:O	1:C:135:VAL:HG23	2.19	0.42
1:D:319:ASN:HD22	1:D:320:SER:N	2.17	0.42
1:E:24:VAL:O	1:E:176:TYR:HE2	2.01	0.42
1:A:292:LEU:O	1:A:293:LEU:HD23	2.19	0.42
1:E:14:THR:HG23	1:E:23:GLU:OE1	2.19	0.42
1:A:300:VAL:HG22	1:A:301:LYS:HG2	2.02	0.42
1:F:182:VAL:HG12	1:F:197:GLY:O	2.19	0.42
1:F:41:VAL:CG1	1:F:45:LEU:CD1	2.95	0.42
1:E:62:TYR:CD1	1:E:83:ALA:HB1	2.52	0.42

*Continued on next page...*



*Continued from previous page...*

Atom-1	Atom-2	Interatomic distance (Å)	Clash overlap (Å)
1:B:322:ASN:C	1:B:322:ASN:ND2	2.74	0.41
1:A:62:TYR:CE1	1:A:83:ALA:HB1	2.55	0.41
1:D:223:ARG:HG3	3:D:363:HOH:O	2.19	0.41
1:C:8:LEU:C	1:C:8:LEU:HD12	2.40	0.41
1:D:14:THR:HG23	1:D:23:GLU:HG3	2.02	0.41
1:D:92:THR:HG21	1:D:104:ALA:HB1	2.03	0.41
1:C:41:VAL:HG13	1:C:45:LEU:HD12	2.02	0.41
1:E:134:ASN:HD22	1:E:135:VAL:H	1.68	0.41
1:A:87:LYS:HB3	1:A:88:PRO:HD2	2.03	0.41
1:E:195:TYR:O	1:E:213:GLY:HA3	2.20	0.41
1:E:270:ILE:HD13	1:E:305:ALA:HB1	2.01	0.41
1:E:57:THR:H	1:E:60:GLN:NE2	2.19	0.41
1:E:47:TYR:CD2	1:E:93:LEU:HD12	2.56	0.41
1:E:47:TYR:CG	1:E:93:LEU:HD12	2.56	0.41
1:D:222:GLY:HA3	1:D:240:CYS:SG	2.61	0.41
1:A:92:THR:OG1	1:A:108:LEU:HD22	2.21	0.41
1:E:242:THR:HG22	1:E:268:ILE:CG1	2.51	0.40
1:A:57:THR:CG2	1:A:60:GLN:H	2.35	0.40
1:E:92:THR:CG2	1:E:104:ALA:HB1	2.52	0.40
1:F:272:LEU:HD22	1:F:276:ASN:HD22	1.86	0.40
1:D:125:LEU:O	1:D:128:ILE:HB	2.21	0.40
1:E:165:PHE:CZ	1:F:163:GLU:HG3	2.57	0.40
1:B:57:THR:CG2	1:B:60:GLN:H	2.35	0.40
1:E:5:LEU:HD22	1:E:95:ALA:HA	2.02	0.40

There are no symmetry-related clashes.

## 5.3 Torsion angles [i](#)

### 5.3.1 Protein backbone [i](#)

In the following table, the Percentiles column shows the percent Ramachandran outliers of the chain as a percentile score with respect to all X-ray entries followed by that with respect to entries of similar resolution.

The Analysed column shows the number of residues for which the backbone conformation was analysed, and the total number of residues.

Mol	Chain	Analysed	Favoured	Allowed	Outliers	Percentiles
1	A	315/347 (91%)	310 (98%)	5 (2%)	0	100 100

*Continued on next page...*

*Continued from previous page...*

Mol	Chain	Analysed	Favoured	Allowed	Outliers	Percentiles	
1	B	312/347 (90%)	308 (99%)	4 (1%)	0	100	100
1	C	317/347 (91%)	313 (99%)	4 (1%)	0	100	100
1	D	315/347 (91%)	297 (94%)	18 (6%)	0	100	100
1	E	302/347 (87%)	291 (96%)	11 (4%)	0	100	100
1	F	317/347 (91%)	304 (96%)	13 (4%)	0	100	100
All	All	1878/2082 (90%)	1823 (97%)	55 (3%)	0	100	100

There are no Ramachandran outliers to report.

### 5.3.2 Protein sidechains ⓘ

In the following table, the Percentiles column shows the percent sidechain outliers of the chain as a percentile score with respect to all X-ray entries followed by that with respect to entries of similar resolution.

The Analysed column shows the number of residues for which the sidechain conformation was analysed, and the total number of residues.

Mol	Chain	Analysed	Rotameric	Outliers	Percentiles	
1	A	244/263 (93%)	231 (95%)	13 (5%)	26	48
1	B	241/263 (92%)	229 (95%)	12 (5%)	28	51
1	C	244/263 (93%)	234 (96%)	10 (4%)	35	61
1	D	244/263 (93%)	230 (94%)	14 (6%)	24	44
1	E	235/263 (89%)	220 (94%)	15 (6%)	20	38
1	F	244/263 (93%)	234 (96%)	10 (4%)	35	61
All	All	1452/1578 (92%)	1378 (95%)	74 (5%)	28	50

All (74) residues with a non-rotameric sidechain are listed below:

Mol	Chain	Res	Type
1	A	8	LEU
1	A	14	THR
1	A	59	GLN
1	A	92	THR
1	A	93	LEU
1	A	123	VAL
1	A	153	LEU
1	A	163	GLU

*Continued on next page...*

*Continued from previous page...*

Mol	Chain	Res	Type
1	A	282	LEU
1	A	297	ASN
1	A	306	ARG
1	A	317	ARG
1	A	319	ASN
1	B	8	LEU
1	B	14	THR
1	B	82	LEU
1	B	92	THR
1	B	93	LEU
1	B	123	VAL
1	B	163	GLU
1	B	282	LEU
1	B	297	ASN
1	B	306	ARG
1	B	317	ARG
1	B	322	ASN
1	C	8	LEU
1	C	14	THR
1	C	82	LEU
1	C	92	THR
1	C	93	LEU
1	C	123	VAL
1	C	153	LEU
1	C	163	GLU
1	C	282	LEU
1	C	296	GLN
1	D	8	LEU
1	D	14	THR
1	D	93	LEU
1	D	153	LEU
1	D	163	GLU
1	D	198	GLU
1	D	245	THR
1	D	253	VAL
1	D	282	LEU
1	D	300	VAL
1	D	306	ARG
1	D	317	ARG
1	D	318	ARG
1	D	319	ASN
1	E	8	LEU

*Continued on next page...*

*Continued from previous page...*

Mol	Chain	Res	Type
1	E	14	THR
1	E	41	VAL
1	E	66	ASP
1	E	82	LEU
1	E	84	GLU
1	E	93	LEU
1	E	123	VAL
1	E	165	PHE
1	E	241	SER
1	E	282	LEU
1	E	283	TYR
1	E	297	ASN
1	E	306	ARG
1	E	311	GLN
1	F	14	THR
1	F	59	GLN
1	F	84	GLU
1	F	92	THR
1	F	153	LEU
1	F	163	GLU
1	F	165	PHE
1	F	282	LEU
1	F	319	ASN
1	F	328	LYS

Some sidechains can be flipped to improve hydrogen bonding and reduce clashes. All (36) such sidechains are listed below:

Mol	Chain	Res	Type
1	A	3	GLN
1	A	15	GLN
1	A	60	GLN
1	A	134	ASN
1	A	319	ASN
1	B	15	GLN
1	B	60	GLN
1	B	115	HIS
1	B	134	ASN
1	B	319	ASN
1	B	322	ASN
1	C	3	GLN
1	C	15	GLN
1	C	60	GLN

*Continued on next page...*

*Continued from previous page...*

Mol	Chain	Res	Type
1	C	134	ASN
1	C	297	ASN
1	C	319	ASN
1	D	3	GLN
1	D	15	GLN
1	D	18	GLN
1	D	52	GLN
1	D	60	GLN
1	D	319	ASN
1	E	15	GLN
1	E	59	GLN
1	E	60	GLN
1	E	115	HIS
1	E	134	ASN
1	E	311	GLN
1	F	3	GLN
1	F	15	GLN
1	F	18	GLN
1	F	134	ASN
1	F	276	ASN
1	F	311	GLN
1	F	319	ASN

### 5.3.3 RNA ⓘ

There are no RNA molecules in this entry.

## 5.4 Non-standard residues in protein, DNA, RNA chains ⓘ

There are no non-standard protein/DNA/RNA residues in this entry.

## 5.5 Carbohydrates ⓘ

There are no carbohydrates in this entry.

## 5.6 Ligand geometry ⓘ

5 ligands are modelled in this entry.

In the following table, the Counts columns list the number of bonds (or angles) for which Mogul statistics could be retrieved, the number of bonds (or angles) that are observed in the model and

the number of bonds (or angles) that are defined in the Chemical Component Dictionary. The Link column lists molecule types, if any, to which the group is linked. The Z score for a bond length (or angle) is the number of standard deviations the observed value is removed from the expected value. A bond length (or angle) with  $|Z| > 2$  is considered an outlier worth inspection. RMSZ is the root-mean-square of all Z scores of the bond lengths (or angles).

Mol	Type	Chain	Res	Link	Bond lengths			Bond angles		
					Counts	RMSZ	$\# Z  > 2$	Counts	RMSZ	$\# Z  > 2$
2	NPI	A	381	-	3,11,11	0.46	0	2,13,13	0.34	0
2	NPI	C	381	-	3,11,11	0.66	0	2,13,13	0.57	0
2	NPI	D	381	-	3,11,11	0.90	0	2,13,13	0.60	0
2	NPI	E	345	-	3,11,11	0.85	0	2,13,13	0.33	0
2	NPI	E	381	-	3,11,11	0.43	0	2,13,13	0.27	0

In the following table, the Chirals column lists the number of chiral outliers, the number of chiral centers analysed, the number of these observed in the model and the number defined in the Chemical Component Dictionary. Similar counts are reported in the Torsion and Rings columns. '-' means no outliers of that kind were identified.

Mol	Type	Chain	Res	Link	Chirals	Torsions	Rings
2	NPI	A	381	-	-	0/5/11/11	0/0/0/0
2	NPI	C	381	-	-	0/5/11/11	0/0/0/0
2	NPI	D	381	-	-	0/5/11/11	0/0/0/0
2	NPI	E	345	-	-	0/5/11/11	0/0/0/0
2	NPI	E	381	-	-	0/5/11/11	0/0/0/0

There are no bond length outliers.

There are no bond angle outliers.

There are no chirality outliers.

There are no torsion outliers.

There are no ring outliers.

2 monomers are involved in 2 short contacts:

Mol	Chain	Res	Type	Clashes	Symm-Clashes
2	A	381	NPI	1	0
2	C	381	NPI	1	0

## 5.7 Other polymers ⓘ

There are no such residues in this entry.

## 5.8 Polymer linkage issues ⓘ

There are no chain breaks in this entry.

## 6 Fit of model and data [i](#)

### 6.1 Protein, DNA and RNA chains [i](#)

In the following table, the column labelled ‘#RSRZ> 2’ contains the number (and percentage) of RSRZ outliers, followed by percent RSRZ outliers for the chain as percentile scores relative to all X-ray entries and entries of similar resolution. The OWAB column contains the minimum, median, 95<sup>th</sup> percentile and maximum values of the occupancy-weighted average B-factor per residue. The column labelled ‘Q< 0.9’ lists the number of (and percentage) of residues with an average occupancy less than 0.9.

Mol	Chain	Analysed	<RSRZ>	#RSRZ>2	OWAB(Å <sup>2</sup> )	Q<0.9
1	A	321/347 (92%)	-0.34	1 (0%) 93 94	12, 17, 48, 68	0
1	B	318/347 (91%)	-0.43	0 100 100	11, 16, 43, 56	0
1	C	321/347 (92%)	-0.32	1 (0%) 93 94	12, 18, 46, 55	0
1	D	321/347 (92%)	-0.26	1 (0%) 93 94	12, 18, 50, 76	0
1	E	310/347 (89%)	-0.38	3 (0%) 82 83	11, 17, 44, 59	0
1	F	321/347 (92%)	-0.27	1 (0%) 93 94	13, 19, 50, 58	0
All	All	1912/2082 (91%)	-0.34	7 (0%) 92 92	11, 18, 48, 76	0

All (7) RSRZ outliers are listed below:

Mol	Chain	Res	Type	RSRZ
1	D	321	GLN	4.1
1	E	302	VAL	2.1
1	E	329	THR	2.1
1	C	3	GLN	2.1
1	F	300	VAL	2.1
1	A	329	THR	2.0
1	E	301	LYS	2.0

### 6.2 Non-standard residues in protein, DNA, RNA chains [i](#)

There are no non-standard protein/DNA/RNA residues in this entry.

### 6.3 Carbohydrates [i](#)

There are no carbohydrates in this entry.



## 6.4 Ligands [i](#)

In the following table, the Atoms column lists the number of modelled atoms in the group and the number defined in the chemical component dictionary. LLDF column lists the quality of electron density of the group with respect to its neighbouring residues in protein, DNA or RNA chains. The B-factors column lists the minimum, median, 95<sup>th</sup> percentile and maximum values of B factors of atoms in the group. The column labelled 'Q< 0.9' lists the number of atoms with occupancy less than 0.9.

Mol	Type	Chain	Res	Atoms	RSCC	RSR	LLDF	B-factors( $\text{\AA}^2$ )	Q<0.9
2	NPI	A	381	12/12	0.94	0.16	1.29	7,8,10,10	0
2	NPI	E	381	12/12	0.96	0.12	0.33	2,2,5,5	0
2	NPI	C	381	12/12	0.94	0.13	0.29	6,11,20,22	0
2	NPI	E	345	12/12	0.98	0.11	-0.20	8,16,19,20	0
2	NPI	D	381	12/12	0.97	0.13	-0.23	2,2,2,2	0

## 6.5 Other polymers [i](#)

There are no such residues in this entry.