



# Full wwPDB X-ray Structure Validation Report ⓘ

Nov 13, 2017 – 07:54 AM EST

PDB ID : 4R5Y  
Title : The complex structure of Braf V600E kinase domain with a novel Braf inhibitor  
Authors : Feng, Y.; Peng, H.; Zhang, Y.; Liu, Y.; Wei, M.  
Deposited on : unknown  
Resolution : 3.50 Å(reported)

This is a Full wwPDB X-ray Structure Validation Report for a publicly released PDB entry.

We welcome your comments at [validation@mail.wwpdb.org](mailto:validation@mail.wwpdb.org)

A user guide is available at

<http://wwpdb.org/validation/2016/XrayValidationReportHelp>

with specific help available everywhere you see the ⓘ symbol.

---

The following versions of software and data (see [references ⓘ](#)) were used in the production of this report:

MolProbity : 4.02b-467  
Mogul : 1.7.2 (RC1), CSD as538be (2017)  
Xtriage (Phenix) : 1.9-1692  
EDS : rb-20030345  
Percentile statistics : 20161228.v01 (using entries in the PDB archive December 28th 2016)  
Refmac : 5.8.0135  
CCP4 : 6.5.0  
Ideal geometry (proteins) : Engh & Huber (2001)  
Ideal geometry (DNA, RNA) : Parkinson et al. (1996)  
Validation Pipeline (wwPDB-VP) : rb-20030345

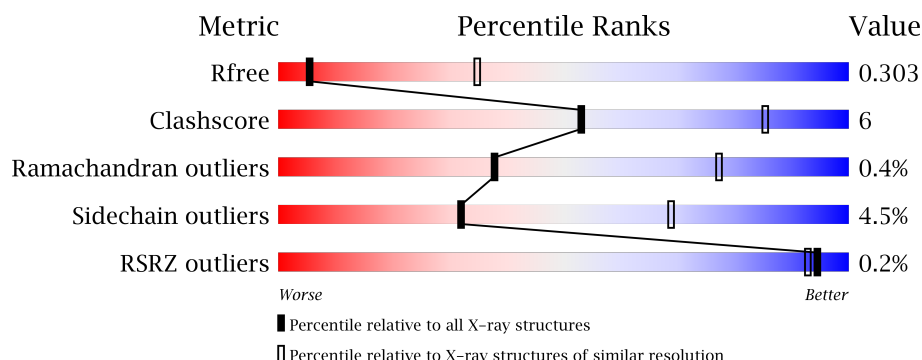
# 1 Overall quality at a glance

The following experimental techniques were used to determine the structure:

## *X-RAY DIFFRACTION*



The reported resolution of this entry is 3.50 Å.

Percentile scores (ranging between 0-100) for global validation metrics of the entry are shown in the following graphic. The table shows the number of entries on which the scores are based.



Metric	Whole archive (#Entries)	Similar resolution (#Entries, resolution range(Å))
$R_{free}$	100719	1195 (3.60-3.40)
Clashscore	112137	1322 (3.60-3.40)
Ramachandran outliers	110173	1283 (3.60-3.40)
Sidechain outliers	110143	1284 (3.60-3.40)
RSRZ outliers	101464	1226 (3.60-3.40)

The table below summarises the geometric issues observed across the polymeric chains and their fit to the electron density. The red, orange, yellow and green segments on the lower bar indicate the fraction of residues that contain outliers for  $\geq 3$ , 2, 1 and 0 types of geometric quality criteria. A grey segment represents the fraction of residues that are not modelled. The numeric value for each fraction is indicated below the corresponding segment, with a dot representing fractions  $\leq 5\%$ . The upper red bar (where present) indicates the fraction of residues that have poor fit to the electron density. The numeric value is given above the bar.

Mol	Chain	Length	Quality of chain
1	A	292	
1	B	292	

The following table lists non-polymeric compounds, carbohydrate monomers and non-standard residues in protein, DNA, RNA chains that are outliers for geometric or electron-density-fit criteria:

Mol	Type	Chain	Res	Chirality	Geometry	Clashes	Electron density
2	3K3	A	801	-	-	-	X
2	3K3	B	801	-	-	-	X

## 2 Entry composition

There are 2 unique types of molecules in this entry. The entry contains 4055 atoms, of which 0 are hydrogens and 0 are deuteriums.

In the tables below, the ZeroOcc column contains the number of atoms modelled with zero occupancy, the AltConf column contains the number of residues with at least one atom in alternate conformation and the Trace column contains the number of residues modelled with at most 2 atoms.

- Molecule 1 is a protein called Serine/threonine-protein kinase B-raf.

Mol	Chain	Residues	Atoms					ZeroOcc	AltConf	Trace
1	A	253	Total	C	N	O	S	0	0	0
			1991	1264	352	362	13			
1	B	254	Total	C	N	O	S	0	0	0
			1994	1265	354	362	13			

There are 58 discrepancies between the modelled and reference sequences:

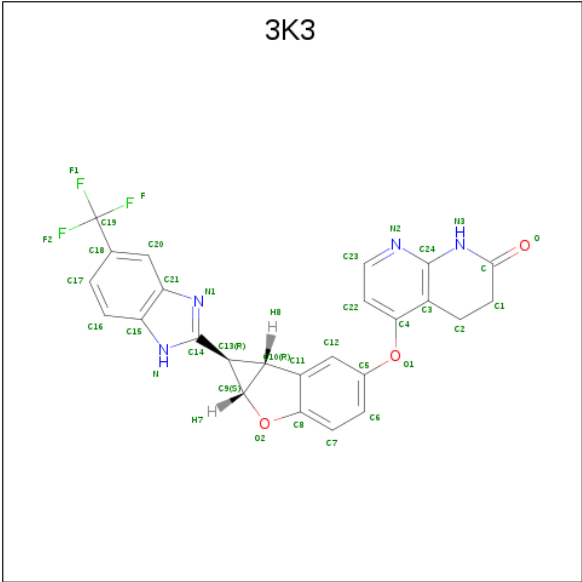
Chain	Residue	Modelled	Actual	Comment	Reference
A	432	MET	-	EXPRESSION TAG	UNP P15056
A	433	LYS	-	EXPRESSION TAG	UNP P15056
A	434	LYS	-	EXPRESSION TAG	UNP P15056
A	435	GLY	-	EXPRESSION TAG	UNP P15056
A	436	HIS	-	EXPRESSION TAG	UNP P15056
A	437	HIS	-	EXPRESSION TAG	UNP P15056
A	438	HIS	-	EXPRESSION TAG	UNP P15056
A	439	HIS	-	EXPRESSION TAG	UNP P15056
A	440	HIS	-	EXPRESSION TAG	UNP P15056
A	441	HIS	-	EXPRESSION TAG	UNP P15056
A	442	GLY	-	EXPRESSION TAG	UNP P15056
A	443	SER	-	EXPRESSION TAG	UNP P15056
A	543	ALA	ILE	ENGINEERED MUTATION	UNP P15056
A	544	SER	ILE	ENGINEERED MUTATION	UNP P15056
A	551	LYS	ILE	ENGINEERED MUTATION	UNP P15056
A	562	ARG	GLN	ENGINEERED MUTATION	UNP P15056
A	588	ASN	LEU	ENGINEERED MUTATION	UNP P15056
A	600	GLU	VAL	ENGINEERED MUTATION	UNP P15056
A	630	SER	LYS	ENGINEERED MUTATION	UNP P15056
A	667	GLU	PHE	ENGINEERED MUTATION	UNP P15056
A	673	SER	TYR	ENGINEERED MUTATION	UNP P15056
A	688	ARG	ALA	ENGINEERED MUTATION	UNP P15056
A	706	SER	LEU	ENGINEERED MUTATION	UNP P15056
A	709	ARG	GLN	ENGINEERED MUTATION	UNP P15056
A	713	GLU	SER	ENGINEERED MUTATION	UNP P15056

*Continued on next page...*

*Continued from previous page...*

Chain	Residue	Modelled	Actual	Comment	Reference
A	716	GLU	LEU	ENGINEERED MUTATION	UNP P15056
A	720	GLU	SER	ENGINEERED MUTATION	UNP P15056
A	722	SER	PRO	ENGINEERED MUTATION	UNP P15056
A	723	GLY	LYS	ENGINEERED MUTATION	UNP P15056
B	432	MET	-	EXPRESSION TAG	UNP P15056
B	433	LYS	-	EXPRESSION TAG	UNP P15056
B	434	LYS	-	EXPRESSION TAG	UNP P15056
B	435	GLY	-	EXPRESSION TAG	UNP P15056
B	436	HIS	-	EXPRESSION TAG	UNP P15056
B	437	HIS	-	EXPRESSION TAG	UNP P15056
B	438	HIS	-	EXPRESSION TAG	UNP P15056
B	439	HIS	-	EXPRESSION TAG	UNP P15056
B	440	HIS	-	EXPRESSION TAG	UNP P15056
B	441	HIS	-	EXPRESSION TAG	UNP P15056
B	442	GLY	-	EXPRESSION TAG	UNP P15056
B	443	SER	-	EXPRESSION TAG	UNP P15056
B	543	ALA	ILE	ENGINEERED MUTATION	UNP P15056
B	544	SER	ILE	ENGINEERED MUTATION	UNP P15056
B	551	LYS	ILE	ENGINEERED MUTATION	UNP P15056
B	562	ARG	GLN	ENGINEERED MUTATION	UNP P15056
B	588	ASN	LEU	ENGINEERED MUTATION	UNP P15056
B	600	GLU	VAL	ENGINEERED MUTATION	UNP P15056
B	630	SER	LYS	ENGINEERED MUTATION	UNP P15056
B	667	GLU	PHE	ENGINEERED MUTATION	UNP P15056
B	673	SER	TYR	ENGINEERED MUTATION	UNP P15056
B	688	ARG	ALA	ENGINEERED MUTATION	UNP P15056
B	706	SER	LEU	ENGINEERED MUTATION	UNP P15056
B	709	ARG	GLN	ENGINEERED MUTATION	UNP P15056
B	713	GLU	SER	ENGINEERED MUTATION	UNP P15056
B	716	GLU	LEU	ENGINEERED MUTATION	UNP P15056
B	720	GLU	SER	ENGINEERED MUTATION	UNP P15056
B	722	SER	PRO	ENGINEERED MUTATION	UNP P15056
B	723	GLY	LYS	ENGINEERED MUTATION	UNP P15056

- Molecule 2 is 5-({(1R,1aS,6bR)-1-[5-(trifluoromethyl)-1H-benzimidazol-2-yl]-1a,6b-dihydro-1H-cyclopropa[b][1]benzofuran-5-yl}oxy)-3,4-dihydro-1,8-naphthyridin-2(1H)-one (three-letter code: 3K3) (formula: C<sub>25</sub>H<sub>17</sub>F<sub>3</sub>N<sub>4</sub>O<sub>3</sub>).

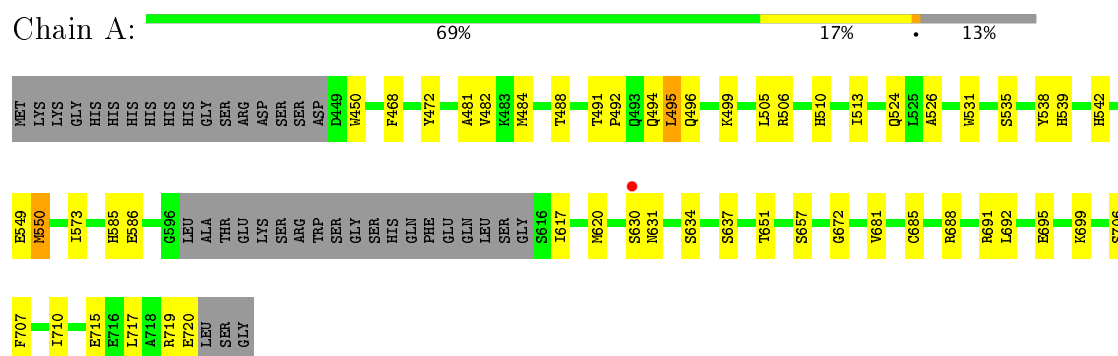


Mol	Chain	Residues	Atoms					ZeroOcc	AltConf
2	A	1	Total	C	F	N	O	0	0
			35	25	3	4	3		
2	B	1	Total	C	F	N	O	0	0
			35	25	3	4	3		

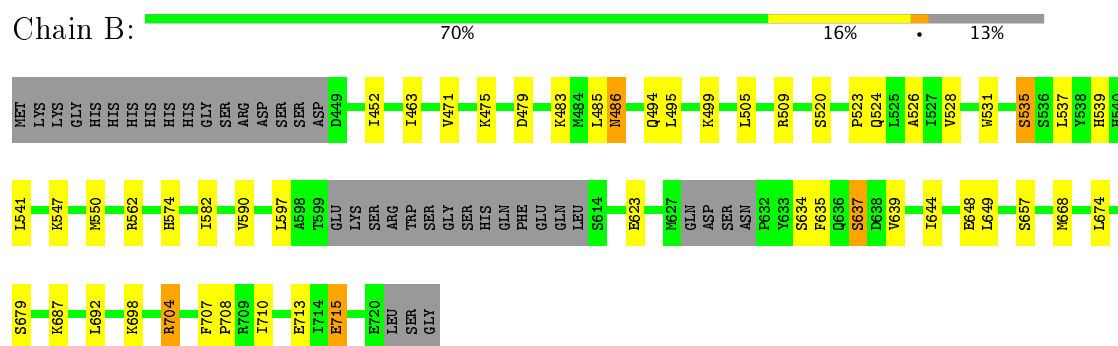
### 3 Residue-property plots [i](#)

These plots are drawn for all protein, RNA and DNA chains in the entry. The first graphic for a chain summarises the proportions of the various outlier classes displayed in the second graphic. The second graphic shows the sequence view annotated by issues in geometry and electron density. Residues are color-coded according to the number of geometric quality criteria for which they contain at least one outlier: green = 0, yellow = 1, orange = 2 and red = 3 or more. A red dot above a residue indicates a poor fit to the electron density ( $RSRZ > 2$ ). Stretches of 2 or more consecutive residues without any outlier are shown as a green connector. Residues present in the sample, but not in the model, are shown in grey.

- Molecule 1: Serine/threonine-protein kinase B-raf



- Molecule 1: Serine/threonine-protein kinase B-raf



## 4 Data and refinement statistics

Property	Value	Source
Space group	P 21 21 21	Depositor
Cell constants a, b, c, $\alpha$ , $\beta$ , $\gamma$	49.40Å 101.60Å 109.79Å 90.00° 90.00° 90.00°	Depositor
Resolution (Å)	41.18 – 3.50 48.29 – 3.25	Depositor EDS
% Data completeness (in resolution range)	97.9 (41.18-3.50) 97.2 (48.29-3.25)	Depositor EDS
$R_{merge}$	0.22	Depositor
$R_{sym}$	(Not available)	Depositor
$\langle I/\sigma(I) \rangle$ <sup>1</sup>	9.09 (at 3.25Å)	Xtriage
Refinement program	PHENIX 1.8 _1069	Depositor
R, $R_{free}$	0.225 , 0.306 0.216 , 0.303	Depositor DCC
$R_{free}$ test set	337 reflections (4.67%)	DCC
Wilson B-factor (Å <sup>2</sup> )	40.4	Xtriage
Anisotropy	0.601	Xtriage
Bulk solvent $k_{sol}$ (e/Å <sup>3</sup> ), $B_{sol}$ (Å <sup>2</sup> )	0.31 , 12.5	EDS
L-test for twinning <sup>2</sup>	$\langle  L  \rangle = 0.48$ , $\langle L^2 \rangle = 0.31$	Xtriage
Estimated twinning fraction	No twinning to report.	Xtriage
$F_o, F_c$ correlation	0.91	EDS
Total number of atoms	4055	wwPDB-VP
Average B, all atoms (Å <sup>2</sup> )	49.0	wwPDB-VP

Xtriage's analysis on translational NCS is as follows: *The analyses of the Patterson function reveals a significant off-origin peak that is 52.37 % of the origin peak, indicating pseudo translational symmetry. The chance of finding a peak of this or larger height randomly in a structure without pseudo translational symmetry is equal to 4.9121e-05. The detected translational NCS is most likely also responsible for the elevated intensity ratio.*

<sup>1</sup> Intensities estimated from amplitudes.

<sup>2</sup> Theoretical values of  $\langle |L| \rangle$ ,  $\langle L^2 \rangle$  for acentric reflections are 0.5, 0.333 respectively for untwinned datasets, and 0.375, 0.2 for perfectly twinned datasets.



## 5 Model quality

### 5.1 Standard geometry

Bond lengths and bond angles in the following residue types are not validated in this section: 3K3

The Z score for a bond length (or angle) is the number of standard deviations the observed value is removed from the expected value. A bond length (or angle) with  $|Z| > 5$  is considered an outlier worth inspection. RMSZ is the root-mean-square of all Z scores of the bond lengths (or angles).

Mol	Chain	Bond lengths		Bond angles	
		RMSZ	$\# Z  > 5$	RMSZ	$\# Z  > 5$
1	A	0.26	0/2032	0.45	0/2742
1	B	0.28	0/2034	0.46	0/2745
All	All	0.27	0/4066	0.46	0/5487

There are no bond length outliers.

There are no bond angle outliers.

There are no chirality outliers.

There are no planarity outliers.

### 5.2 Too-close contacts

In the following table, the Non-H and H(model) columns list the number of non-hydrogen atoms and hydrogen atoms in the chain respectively. The H(added) column lists the number of hydrogen atoms added and optimized by MolProbity. The Clashes column lists the number of clashes within the asymmetric unit, whereas Symm-Clashes lists symmetry related clashes.

Mol	Chain	Non-H	H(model)	H(added)	Clashes	Symm-Clashes
1	A	1991	0	1981	26	0
1	B	1994	0	1979	25	0
2	A	35	0	0	1	0
2	B	35	0	0	1	0
All	All	4055	0	3960	50	0

The all-atom clashscore is defined as the number of clashes found per 1000 atoms (including hydrogen atoms). The all-atom clashscore for this structure is 6.

All (50) close contacts within the same asymmetric unit are listed below, sorted by their clash magnitude.

Atom-1	Atom-2	Interatomic distance (Å)	Clash overlap (Å)
1:B:698:LYS:O	1:B:704:ARG:NH1	2.09	0.85
1:B:471:VAL:HG23	1:B:597:LEU:HD21	1.66	0.76
1:B:692:LEU:HD21	1:B:710:ILE:HG23	1.75	0.68
1:B:520:SER:HB2	1:B:526:ALA:HB3	1.76	0.68
1:A:630:SER:OG	1:A:631:ASN:N	2.28	0.67
1:B:537:LEU:HD21	1:B:649:LEU:HD21	1.82	0.61
1:A:692:LEU:HD21	1:A:710:ILE:HG23	1.86	0.58
1:B:495:LEU:HD11	1:B:499:LYS:HE2	1.85	0.58
1:A:481:ALA:HB2	1:A:531:TRP:HE3	1.71	0.56
1:A:496:GLN:HA	1:A:499:LYS:HB2	1.88	0.54
1:B:562:ARG:NH2	1:B:715:GLU:OE2	2.40	0.54
1:B:634:SER:H	1:B:637:SER:HB3	1.72	0.53
1:A:492:PRO:HA	1:A:495:LEU:HB3	1.90	0.53
1:A:510:HIS:HB3	1:A:513:ILE:HG12	1.92	0.52
1:A:651:THR:HA	1:A:681:VAL:HA	1.91	0.52
1:B:668:MET:HB3	1:B:674:LEU:HB2	1.92	0.52
1:B:485:LEU:O	1:B:524:GLN:NE2	2.43	0.52
1:A:573:ILE:HD13	1:A:634:SER:HA	1.93	0.51
1:A:450:TRP:CH2	1:B:509:ARG:HG3	2.45	0.50
1:A:707:PHE:HA	1:A:710:ILE:HD12	1.94	0.50
1:A:538:TYR:CD1	1:A:542:HIS:HD2	2.31	0.49
1:A:472:TYR:HB2	1:A:482:VAL:HG13	1.95	0.48
1:B:463:ILE:HG12	1:B:531:TRP:HH2	1.79	0.48
1:B:535:SER:HB3	1:B:539:HIS:HB3	1.96	0.48
1:B:707:PHE:N	1:B:708:PRO:HD2	2.28	0.48
1:A:672:GLY:O	1:A:699:LYS:NZ	2.44	0.48
1:A:715:GLU:O	1:A:719:ARG:HG3	2.14	0.47
1:B:687:LYS:HE2	1:B:687:LYS:HB3	1.59	0.46
1:B:486:ASN:N	1:B:486:ASN:OD1	2.48	0.46
1:A:484:MET:SD	1:A:524:GLN:NE2	2.75	0.45
1:A:688:ARG:HD2	1:A:717:LEU:HB3	1.99	0.45
1:A:691:ARG:O	1:A:695:GLU:HG3	2.16	0.45
1:A:505:LEU:HD21	2:A:801:3K3:C21	2.47	0.44
1:B:475:LYS:NZ	1:B:479:ASP:OD1	2.46	0.44
1:A:550:MET:HE3	1:A:685:CYS:HA	1.99	0.44
1:B:635:PHE:O	1:B:639:VAL:HG23	2.17	0.44
1:B:505:LEU:HD21	2:B:801:3K3:N1	2.33	0.43
1:B:623:GLU:OE1	1:B:704:ARG:NH2	2.51	0.43
1:A:549:GLU:N	1:A:549:GLU:OE2	2.53	0.41
1:A:491:THR:O	1:A:494:GLN:HG2	2.20	0.41
1:A:585:HIS:CE1	1:A:586:GLU:HG3	2.56	0.41
1:B:483:LYS:NZ	1:B:597:LEU:HD23	2.36	0.41

Continued on next page...

*Continued from previous page...*

Atom-1	Atom-2	Interatomic distance (Å)	Clash overlap (Å)
1:A:484:MET:HG2	1:A:526:ALA:HB2	2.03	0.41
1:B:452:ILE:HD12	1:B:528:VAL:HG21	2.03	0.41
1:A:706:SER:O	1:A:710:ILE:HG13	2.21	0.41
1:B:582:ILE:HG23	1:B:590:VAL:HG13	2.03	0.41
1:A:617:ILE:HA	1:A:620:MET:SD	2.61	0.40
1:B:644:ILE:O	1:B:648:GLU:HG3	2.21	0.40
1:A:535:SER:HB3	1:A:539:HIS:HB3	2.04	0.40
1:B:485:LEU:HD21	1:B:494:GLN:HB3	2.04	0.40

There are no symmetry-related clashes.

## 5.3 Torsion angles [i](#)

### 5.3.1 Protein backbone [i](#)

In the following table, the Percentiles column shows the percent Ramachandran outliers of the chain as a percentile score with respect to all X-ray entries followed by that with respect to entries of similar resolution.

The Analysed column shows the number of residues for which the backbone conformation was analysed, and the total number of residues.

Mol	Chain	Analysed	Favoured	Allowed	Outliers	Percentiles	
1	A	249/292 (85%)	233 (94%)	15 (6%)	1 (0%)	38	77
1	B	248/292 (85%)	235 (95%)	12 (5%)	1 (0%)	38	77
All	All	497/584 (85%)	468 (94%)	27 (5%)	2 (0%)	38	77

All (2) Ramachandran outliers are listed below:

Mol	Chain	Res	Type
1	B	523	PRO
1	A	468	PHE

### 5.3.2 Protein sidechains [i](#)

In the following table, the Percentiles column shows the percent sidechain outliers of the chain as a percentile score with respect to all X-ray entries followed by that with respect to entries of similar resolution.

The Analysed column shows the number of residues for which the sidechain conformation was

analysed, and the total number of residues.

Mol	Chain	Analysed	Rotameric	Outliers	Percentiles	
1	A	213/256 (83%)	206 (97%)	7 (3%)	43	76
1	B	212/256 (83%)	200 (94%)	12 (6%)	24	61
All	All	425/512 (83%)	406 (96%)	19 (4%)	32	69

All (19) residues with a non-rotameric sidechain are listed below:

Mol	Chain	Res	Type
1	A	488	THR
1	A	495	LEU
1	A	506	ARG
1	A	550	MET
1	A	637	SER
1	A	657	SER
1	A	720	GLU
1	B	486	ASN
1	B	535	SER
1	B	541	LEU
1	B	547	LYS
1	B	550	MET
1	B	574	HIS
1	B	637	SER
1	B	657	SER
1	B	679	SER
1	B	704	ARG
1	B	713	GLU
1	B	715	GLU

Some sidechains can be flipped to improve hydrogen bonding and reduce clashes. There are no such sidechains identified.

### 5.3.3 RNA ⓘ

There are no RNA molecules in this entry.

## 5.4 Non-standard residues in protein, DNA, RNA chains ⓘ

There are no non-standard protein/DNA/RNA residues in this entry.

## 5.5 Carbohydrates [i](#)

There are no carbohydrates in this entry.

## 5.6 Ligand geometry [i](#)

2 ligands are modelled in this entry.

In the following table, the Counts columns list the number of bonds (or angles) for which Mogul statistics could be retrieved, the number of bonds (or angles) that are observed in the model and the number of bonds (or angles) that are defined in the Chemical Component Dictionary. The Link column lists molecule types, if any, to which the group is linked. The Z score for a bond length (or angle) is the number of standard deviations the observed value is removed from the expected value. A bond length (or angle) with  $|Z| > 2$  is considered an outlier worth inspection. RMSZ is the root-mean-square of all Z scores of the bond lengths (or angles).

Mol	Type	Chain	Res	Link	Bond lengths			Bond angles		
					Counts	RMSZ	$\# Z  > 2$	Counts	RMSZ	$\# Z  > 2$
2	3K3	A	801	-	36,41,41	0.91	1 (2%)	44,64,64	1.64	10 (22%)
2	3K3	B	801	-	36,41,41	0.93	0	44,64,64	1.48	8 (18%)

In the following table, the Chirals column lists the number of chiral outliers, the number of chiral centers analysed, the number of these observed in the model and the number defined in the Chemical Component Dictionary. Similar counts are reported in the Torsion and Rings columns. '-' means no outliers of that kind were identified.

Mol	Type	Chain	Res	Link	Chirals	Torsions	Rings
2	3K3	A	801	-	-	0/10/40/40	0/6/7/7
2	3K3	B	801	-	-	0/10/40/40	0/6/7/7

All (1) bond length outliers are listed below:

Mol	Chain	Res	Type	Atoms	Z	Observed(Å)	Ideal(Å)
2	A	801	3K3	C3-C24	-2.01	1.38	1.42

All (18) bond angle outliers are listed below:

Mol	Chain	Res	Type	Atoms	Z	Observed(°)	Ideal(°)
2	A	801	3K3	C24-N3-C	-3.97	121.02	124.48
2	A	801	3K3	O2-C8-C11	-3.11	110.26	113.24
2	A	801	3K3	C22-C23-N2	-3.07	120.39	123.92
2	B	801	3K3	C22-C23-N2	-2.95	120.51	123.92
2	B	801	3K3	O2-C8-C11	-2.90	110.47	113.24
2	B	801	3K3	C24-N3-C	-2.11	122.64	124.48

*Continued on next page...*

*Continued from previous page...*

Mol	Chain	Res	Type	Atoms	Z	Observed(°)	Ideal(°)
2	A	801	3K3	O2-C8-C7	2.01	127.67	123.76
2	B	801	3K3	O1-C4-C3	2.03	121.70	117.68
2	A	801	3K3	C23-N2-C24	2.14	121.18	116.74
2	B	801	3K3	O2-C8-C7	2.15	127.94	123.76
2	A	801	3K3	C17-C18-C19	2.17	123.34	120.00
2	A	801	3K3	C13-C14-N	2.18	129.15	124.96
2	B	801	3K3	C23-N2-C24	2.22	121.35	116.74
2	A	801	3K3	C1-C-N3	2.47	118.14	116.25
2	A	801	3K3	C8-O2-C9	3.20	110.88	107.37
2	B	801	3K3	C1-C-N3	3.30	118.78	116.25
2	B	801	3K3	C8-O2-C9	3.58	111.31	107.37
2	A	801	3K3	N3-C24-N2	3.72	121.09	116.89

There are no chirality outliers.

There are no torsion outliers.

There are no ring outliers.

2 monomers are involved in 2 short contacts:

Mol	Chain	Res	Type	Clashes	Symm-Clashes
2	A	801	3K3	1	0
2	B	801	3K3	1	0

## 5.7 Other polymers [i](#)

There are no such residues in this entry.

## 5.8 Polymer linkage issues [i](#)

There are no chain breaks in this entry.

## 6 Fit of model and data [i](#)

### 6.1 Protein, DNA and RNA chains [i](#)

In the following table, the column labelled ‘#RSRZ> 2’ contains the number (and percentage) of RSRZ outliers, followed by percent RSRZ outliers for the chain as percentile scores relative to all X-ray entries and entries of similar resolution. The OWAB column contains the minimum, median, 95<sup>th</sup> percentile and maximum values of the occupancy-weighted average B-factor per residue. The column labelled ‘Q< 0.9’ lists the number of (and percentage) of residues with an average occupancy less than 0.9.

Mol	Chain	Analysed	<RSRZ>	#RSRZ>2	OWAB(Å <sup>2</sup> )	Q<0.9
1	A	253/292 (86%)	-0.36	1 (0%) 92 89	45, 49, 56, 60	0
1	B	254/292 (86%)	-0.38	0 100 100	45, 48, 56, 60	0
All	All	507/584 (86%)	-0.37	1 (0%) 94 93	45, 49, 56, 60	0

All (1) RSRZ outliers are listed below:

Mol	Chain	Res	Type	RSRZ
1	A	630	SER	2.3

### 6.2 Non-standard residues in protein, DNA, RNA chains [i](#)

There are no non-standard protein/DNA/RNA residues in this entry.

### 6.3 Carbohydrates [i](#)

There are no carbohydrates in this entry.

### 6.4 Ligands [i](#)

In the following table, the Atoms column lists the number of modelled atoms in the group and the number defined in the chemical component dictionary. LLDF column lists the quality of electron density of the group with respect to its neighbouring residues in protein, DNA or RNA chains. The B-factors column lists the minimum, median, 95<sup>th</sup> percentile and maximum values of B factors of atoms in the group. The column labelled ‘Q< 0.9’ lists the number of atoms with occupancy less than 0.9.

Mol	Type	Chain	Res	Atoms	RSCC	RSR	LLDF	B-factors(Å <sup>2</sup> )	Q<0.9
2	3K3	B	801	35/35	0.90	0.38	2.30	48,49,50,50	0
2	3K3	A	801	35/35	0.91	0.37	2.29	48,49,51,51	0

## 6.5 Other polymers

There are no such residues in this entry.