



Full wwPDB X-ray Structure Validation Report ⓘ

Feb 15, 2017 – 07:27 am GMT

PDB ID : 4R6T
Title : Structure of the m17 leucyl aminopeptidase from malaria complexed with a hydroxamic acid-based inhibitor
Authors : Drinkwater, N.; McGowan, S.
Deposited on : 2014-08-26
Resolution : 2.60 Å(reported)

This is a Full wwPDB X-ray Structure Validation Report for a publicly released PDB entry.

We welcome your comments at validation@mail.wwpdb.org

A user guide is available at

<http://wwpdb.org/validation/2016/XrayValidationReportHelp>

with specific help available everywhere you see the ⓘ symbol.

The following versions of software and data (see [references ⓘ](#)) were used in the production of this report:

MolProbity : 4.02b-467
Mogul : 1.7.2 (RC1), CSD as538be (2017)
Xtriage (Phenix) : 1.9-1692
EDS : trunk28620
Percentile statistics : 20161228.v01 (using entries in the PDB archive December 28th 2016)
Refmac : 5.8.0135
CCP4 : 6.5.0
Ideal geometry (proteins) : Engh & Huber (2001)
Ideal geometry (DNA, RNA) : Parkinson et al. (1996)
Validation Pipeline (wwPDB-VP) : recalc28949

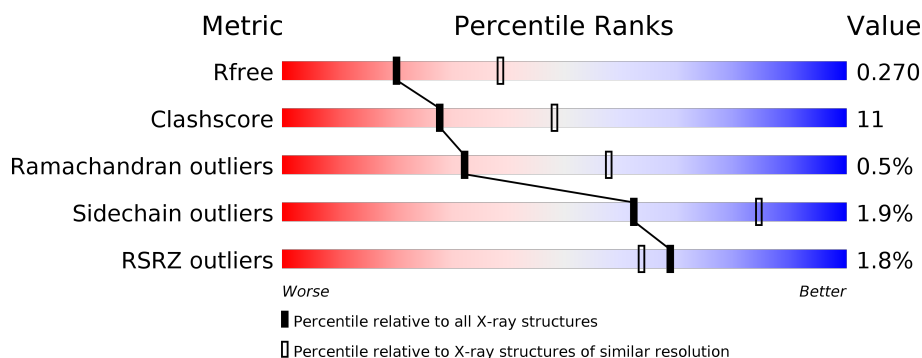
1 Overall quality at a glance

The following experimental techniques were used to determine the structure:

X-RAY DIFFRACTION

The reported resolution of this entry is 2.60 Å.

Percentile scores (ranging between 0-100) for global validation metrics of the entry are shown in the following graphic. The table shows the number of entries on which the scores are based.



Metric	Whole archive (#Entries)	Similar resolution (#Entries, resolution range(Å))
R_{free}	100719	2542 (2.60-2.60)
Clashscore	112137	2895 (2.60-2.60)
Ramachandran outliers	110173	2848 (2.60-2.60)
Sidechain outliers	110143	2848 (2.60-2.60)
RSRZ outliers	101464	2550 (2.60-2.60)

The table below summarises the geometric issues observed across the polymeric chains and their fit to the electron density. The red, orange, yellow and green segments on the lower bar indicate the fraction of residues that contain outliers for ≥ 3 , 2, 1 and 0 types of geometric quality criteria. A grey segment represents the fraction of residues that are not modelled. The numeric value for each fraction is indicated below the corresponding segment, with a dot representing fractions $\leq 5\%$. The upper red bar (where present) indicates the fraction of residues that have poor fit to the electron density. The numeric value is given above the bar.

Mol	Chain	Length	Quality of chain
1	A	528	<div> <div style="width: 100%; height: 10px; background: linear-gradient(to right, red 0%, red 1%, orange 1%, orange 76%, yellow 76%, yellow 96%, green 96%, green 100%);"></div> <div style="display: flex; justify-content: space-between; width: 100%;"> % 76% 20% .. </div> </div>
1	B	528	<div> <div style="width: 100%; height: 10px; background: linear-gradient(to right, red 0%, red 5%, orange 5%, orange 73%, yellow 73%, yellow 96%, green 96%, green 100%);"></div> <div style="display: flex; justify-content: space-between; width: 100%;"> 5% 73% 23% .. </div> </div>
1	C	528	<div> <div style="width: 100%; height: 10px; background: linear-gradient(to right, red 0%, red 2%, orange 2%, orange 73%, yellow 73%, yellow 97%, green 97%, green 100%);"></div> <div style="display: flex; justify-content: space-between; width: 100%;"> 2% 73% 24% .. </div> </div>
1	D	528	<div> <div style="width: 100%; height: 10px; background: linear-gradient(to right, red 0%, orange 0%, orange 71%, yellow 71%, yellow 96%, green 96%, green 100%);"></div> <div style="display: flex; justify-content: space-between; width: 100%;"> 71% 25% .. </div> </div>
1	E	528	<div> <div style="width: 100%; height: 10px; background: linear-gradient(to right, red 0%, orange 0%, orange 75%, yellow 75%, yellow 97%, green 97%, green 100%);"></div> <div style="display: flex; justify-content: space-between; width: 100%;"> 75% 22% .. </div> </div>
1	F	528	<div> <div style="width: 100%; height: 10px; background: linear-gradient(to right, red 0%, red 4%, orange 4%, orange 73%, yellow 73%, yellow 96%, green 96%, green 100%);"></div> <div style="display: flex; justify-content: space-between; width: 100%;"> 4% 73% 22% .. </div> </div>

Continued on next page...

Continued from previous page...

Mol	Chain	Length	Quality of chain
1	G	528	
1	H	528	
1	I	528	
1	J	528	
1	K	528	
1	L	528	

The following table lists non-polymeric compounds, carbohydrate monomers and non-standard residues in protein, DNA, RNA chains that are outliers for geometric or electron-density-fit criteria:

Mol	Type	Chain	Res	Chirality	Geometry	Clashes	Electron density
3	CO3	C	1002	-	-	-	X
3	CO3	D	1002	-	-	-	X
3	CO3	F	1002	-	-	-	X
3	CO3	G	1002	-	-	-	X
3	CO3	H	1002	-	-	-	X
4	SO4	A	1009	-	-	-	X
4	SO4	B	1004	-	-	X	-
4	SO4	C	1005	-	-	-	X
4	SO4	G	1004	-	-	-	X
4	SO4	G	1005	-	-	-	X
4	SO4	J	1007	-	-	-	X
4	SO4	J	1008	-	-	-	X
4	SO4	L	1005	-	-	-	X
4	SO4	L	1008	-	-	-	X
5	R5T	F	1005	-	-	-	X
5	R5T	I	1004	-	-	-	X
5	R5T	L	1006	-	-	-	X
6	1PE	C	1009	-	-	-	X
6	1PE	C	1010	-	-	X	X
6	1PE	E	1006	-	-	X	-
6	1PE	E	1007	-	-	-	X
6	1PE	G	1007	-	-	-	X
6	1PE	I	1006	-	-	-	X
6	1PE	K	1008	-	-	-	X
7	DMS	G	1009	-	-	-	X

2 Entry composition

There are 8 unique types of molecules in this entry. The entry contains 49091 atoms, of which 6 are hydrogens and 0 are deuteriums.

In the tables below, the ZeroOcc column contains the number of atoms modelled with zero occupancy, the AltConf column contains the number of residues with at least one atom in alternate conformation and the Trace column contains the number of residues modelled with at most 2 atoms.

- Molecule 1 is a protein called M17 leucyl aminopeptidase.

Mol	Chain	Residues	Atoms					ZeroOcc	AltConf	Trace
1	A	514	Total	C	N	O	S	0	1	0
			3945	2537	632	757	19			
1	B	511	Total	C	N	O	S	0	0	0
			3869	2489	626	735	19			
1	C	518	Total	C	N	O	S	0	0	0
			3949	2541	637	752	19			
1	D	513	Total	C	N	O	S	0	0	0
			3918	2524	630	745	19			
1	E	513	Total	C	N	O	S	0	0	0
			3913	2521	626	746	20			
1	F	508	Total	C	N	O	S	0	0	0
			3785	2438	610	718	19			
1	G	514	Total	C	N	O	S	0	0	0
			3944	2537	630	758	19			
1	H	511	Total	C	N	O	S	0	0	0
			3878	2495	625	739	19			
1	I	516	Total	C	N	O	S	0	0	0
			3908	2516	629	744	19			
1	J	512	Total	C	N	O	S	0	0	0
			3910	2519	630	742	19			
1	K	509	Total	C	N	O	S	0	0	0
			3879	2500	622	738	19			
1	L	509	Total	C	N	O	S	0	0	0
			3823	2457	614	733	19			

There are 108 discrepancies between the modelled and reference sequences:

Chain	Residue	Modelled	Actual	Comment	Reference
A	152	GLN	ASN	ENGINEERED MUTATION	UNP Q8IL11
A	515	GLN	ASN	ENGINEERED MUTATION	UNP Q8IL11
A	546	GLN	ASN	ENGINEERED MUTATION	UNP Q8IL11
A	606	HIS	-	EXPRESSION TAG	UNP Q8IL11
A	607	HIS	-	EXPRESSION TAG	UNP Q8IL11

Continued on next page...

Continued from previous page...

Chain	Residue	Modelled	Actual	Comment	Reference
A	608	HIS	-	EXPRESSION TAG	UNP Q8IL11
A	609	HIS	-	EXPRESSION TAG	UNP Q8IL11
A	610	HIS	-	EXPRESSION TAG	UNP Q8IL11
A	611	HIS	-	EXPRESSION TAG	UNP Q8IL11
B	152	GLN	ASN	ENGINEERED MUTATION	UNP Q8IL11
B	515	GLN	ASN	ENGINEERED MUTATION	UNP Q8IL11
B	546	GLN	ASN	ENGINEERED MUTATION	UNP Q8IL11
B	606	HIS	-	EXPRESSION TAG	UNP Q8IL11
B	607	HIS	-	EXPRESSION TAG	UNP Q8IL11
B	608	HIS	-	EXPRESSION TAG	UNP Q8IL11
B	609	HIS	-	EXPRESSION TAG	UNP Q8IL11
B	610	HIS	-	EXPRESSION TAG	UNP Q8IL11
B	611	HIS	-	EXPRESSION TAG	UNP Q8IL11
C	152	GLN	ASN	ENGINEERED MUTATION	UNP Q8IL11
C	515	GLN	ASN	ENGINEERED MUTATION	UNP Q8IL11
C	546	GLN	ASN	ENGINEERED MUTATION	UNP Q8IL11
C	606	HIS	-	EXPRESSION TAG	UNP Q8IL11
C	607	HIS	-	EXPRESSION TAG	UNP Q8IL11
C	608	HIS	-	EXPRESSION TAG	UNP Q8IL11
C	609	HIS	-	EXPRESSION TAG	UNP Q8IL11
C	610	HIS	-	EXPRESSION TAG	UNP Q8IL11
C	611	HIS	-	EXPRESSION TAG	UNP Q8IL11
D	152	GLN	ASN	ENGINEERED MUTATION	UNP Q8IL11
D	515	GLN	ASN	ENGINEERED MUTATION	UNP Q8IL11
D	546	GLN	ASN	ENGINEERED MUTATION	UNP Q8IL11
D	606	HIS	-	EXPRESSION TAG	UNP Q8IL11
D	607	HIS	-	EXPRESSION TAG	UNP Q8IL11
D	608	HIS	-	EXPRESSION TAG	UNP Q8IL11
D	609	HIS	-	EXPRESSION TAG	UNP Q8IL11
D	610	HIS	-	EXPRESSION TAG	UNP Q8IL11
D	611	HIS	-	EXPRESSION TAG	UNP Q8IL11
E	152	GLN	ASN	ENGINEERED MUTATION	UNP Q8IL11
E	515	GLN	ASN	ENGINEERED MUTATION	UNP Q8IL11
E	546	GLN	ASN	ENGINEERED MUTATION	UNP Q8IL11
E	606	HIS	-	EXPRESSION TAG	UNP Q8IL11
E	607	HIS	-	EXPRESSION TAG	UNP Q8IL11
E	608	HIS	-	EXPRESSION TAG	UNP Q8IL11
E	609	HIS	-	EXPRESSION TAG	UNP Q8IL11
E	610	HIS	-	EXPRESSION TAG	UNP Q8IL11
E	611	HIS	-	EXPRESSION TAG	UNP Q8IL11
F	152	GLN	ASN	ENGINEERED MUTATION	UNP Q8IL11
F	515	GLN	ASN	ENGINEERED MUTATION	UNP Q8IL11

Continued on next page...

Continued from previous page...

Chain	Residue	Modelled	Actual	Comment	Reference
F	546	GLN	ASN	ENGINEERED MUTATION	UNP Q8IL11
F	606	HIS	-	EXPRESSION TAG	UNP Q8IL11
F	607	HIS	-	EXPRESSION TAG	UNP Q8IL11
F	608	HIS	-	EXPRESSION TAG	UNP Q8IL11
F	609	HIS	-	EXPRESSION TAG	UNP Q8IL11
F	610	HIS	-	EXPRESSION TAG	UNP Q8IL11
F	611	HIS	-	EXPRESSION TAG	UNP Q8IL11
G	152	GLN	ASN	ENGINEERED MUTATION	UNP Q8IL11
G	515	GLN	ASN	ENGINEERED MUTATION	UNP Q8IL11
G	546	GLN	ASN	ENGINEERED MUTATION	UNP Q8IL11
G	606	HIS	-	EXPRESSION TAG	UNP Q8IL11
G	607	HIS	-	EXPRESSION TAG	UNP Q8IL11
G	608	HIS	-	EXPRESSION TAG	UNP Q8IL11
G	609	HIS	-	EXPRESSION TAG	UNP Q8IL11
G	610	HIS	-	EXPRESSION TAG	UNP Q8IL11
G	611	HIS	-	EXPRESSION TAG	UNP Q8IL11
H	152	GLN	ASN	ENGINEERED MUTATION	UNP Q8IL11
H	515	GLN	ASN	ENGINEERED MUTATION	UNP Q8IL11
H	546	GLN	ASN	ENGINEERED MUTATION	UNP Q8IL11
H	606	HIS	-	EXPRESSION TAG	UNP Q8IL11
H	607	HIS	-	EXPRESSION TAG	UNP Q8IL11
H	608	HIS	-	EXPRESSION TAG	UNP Q8IL11
H	609	HIS	-	EXPRESSION TAG	UNP Q8IL11
H	610	HIS	-	EXPRESSION TAG	UNP Q8IL11
H	611	HIS	-	EXPRESSION TAG	UNP Q8IL11
I	152	GLN	ASN	ENGINEERED MUTATION	UNP Q8IL11
I	515	GLN	ASN	ENGINEERED MUTATION	UNP Q8IL11
I	546	GLN	ASN	ENGINEERED MUTATION	UNP Q8IL11
I	606	HIS	-	EXPRESSION TAG	UNP Q8IL11
I	607	HIS	-	EXPRESSION TAG	UNP Q8IL11
I	608	HIS	-	EXPRESSION TAG	UNP Q8IL11
I	609	HIS	-	EXPRESSION TAG	UNP Q8IL11
I	610	HIS	-	EXPRESSION TAG	UNP Q8IL11
I	611	HIS	-	EXPRESSION TAG	UNP Q8IL11
J	152	GLN	ASN	ENGINEERED MUTATION	UNP Q8IL11
J	515	GLN	ASN	ENGINEERED MUTATION	UNP Q8IL11
J	546	GLN	ASN	ENGINEERED MUTATION	UNP Q8IL11
J	606	HIS	-	EXPRESSION TAG	UNP Q8IL11
J	607	HIS	-	EXPRESSION TAG	UNP Q8IL11
J	608	HIS	-	EXPRESSION TAG	UNP Q8IL11
J	609	HIS	-	EXPRESSION TAG	UNP Q8IL11
J	610	HIS	-	EXPRESSION TAG	UNP Q8IL11

Continued on next page...

Continued from previous page...

Chain	Residue	Modelled	Actual	Comment	Reference
J	611	HIS	-	EXPRESSION TAG	UNP Q8IL11
K	152	GLN	ASN	ENGINEERED MUTATION	UNP Q8IL11
K	515	GLN	ASN	ENGINEERED MUTATION	UNP Q8IL11
K	546	GLN	ASN	ENGINEERED MUTATION	UNP Q8IL11
K	606	HIS	-	EXPRESSION TAG	UNP Q8IL11
K	607	HIS	-	EXPRESSION TAG	UNP Q8IL11
K	608	HIS	-	EXPRESSION TAG	UNP Q8IL11
K	609	HIS	-	EXPRESSION TAG	UNP Q8IL11
K	610	HIS	-	EXPRESSION TAG	UNP Q8IL11
K	611	HIS	-	EXPRESSION TAG	UNP Q8IL11
L	152	GLN	ASN	ENGINEERED MUTATION	UNP Q8IL11
L	515	GLN	ASN	ENGINEERED MUTATION	UNP Q8IL11
L	546	GLN	ASN	ENGINEERED MUTATION	UNP Q8IL11
L	606	HIS	-	EXPRESSION TAG	UNP Q8IL11
L	607	HIS	-	EXPRESSION TAG	UNP Q8IL11
L	608	HIS	-	EXPRESSION TAG	UNP Q8IL11
L	609	HIS	-	EXPRESSION TAG	UNP Q8IL11
L	610	HIS	-	EXPRESSION TAG	UNP Q8IL11
L	611	HIS	-	EXPRESSION TAG	UNP Q8IL11

- Molecule 2 is ZINC ION (three-letter code: ZN) (formula: Zn).

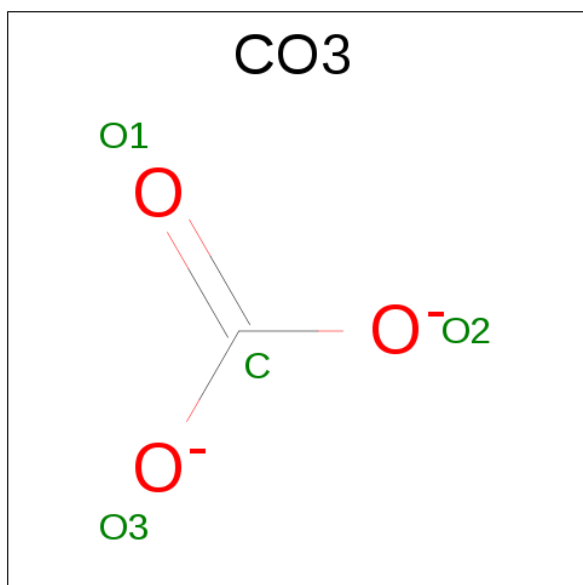
Mol	Chain	Residues	Atoms	ZeroOcc	AltConf
2	G	2	Total Zn 2 2	0	0
2	J	2	Total Zn 2 2	0	0
2	D	2	Total Zn 2 2	0	0
2	K	2	Total Zn 2 2	0	0
2	E	2	Total Zn 2 2	0	0
2	H	2	Total Zn 2 2	0	0
2	B	2	Total Zn 2 2	0	0
2	I	2	Total Zn 2 2	0	0
2	C	2	Total Zn 2 2	0	0
2	A	2	Total Zn 2 2	0	0

Continued on next page...

Continued from previous page...

Mol	Chain	Residues	Atoms		ZeroOcc	AltConf
2	L	2	Total	Zn	0	0
			2	2		
2	F	2	Total	Zn	0	0
			2	2		

- Molecule 3 is CARBONATE ION (three-letter code: CO3) (formula: CO₃).



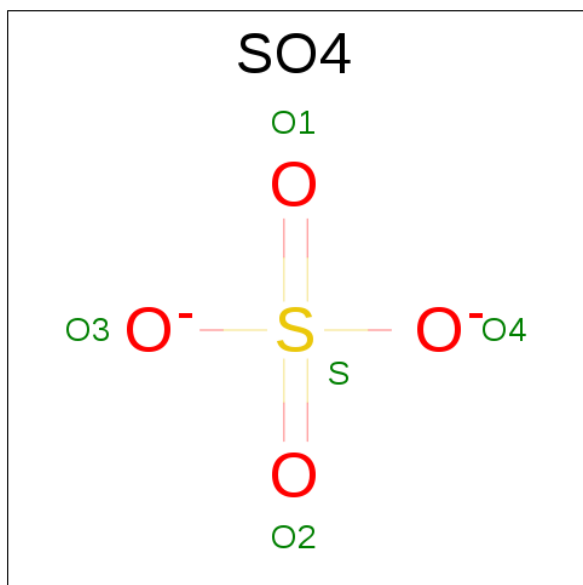
Mol	Chain	Residues	Atoms			ZeroOcc	AltConf
3	A	1	Total	C	O	0	0
			4	1	3		
3	B	1	Total	C	O	0	0
			4	1	3		
3	C	1	Total	C	O	0	0
			4	1	3		
3	D	1	Total	C	O	0	0
			4	1	3		
3	E	1	Total	C	O	0	0
			4	1	3		
3	F	1	Total	C	O	0	0
			4	1	3		
3	G	1	Total	C	O	0	0
			4	1	3		
3	H	1	Total	C	O	0	0
			4	1	3		
3	I	1	Total	C	O	0	0
			4	1	3		

Continued on next page...

Continued from previous page...

Mol	Chain	Residues	Atoms			ZeroOcc	AltConf
3	J	1	Total	C	O	0	0
			4	1	3		
3	K	1	Total	C	O	0	0
			4	1	3		
3	L	1	Total	C	O	0	0
			4	1	3		

- Molecule 4 is SULFATE ION (three-letter code: SO4) (formula: O₄S).



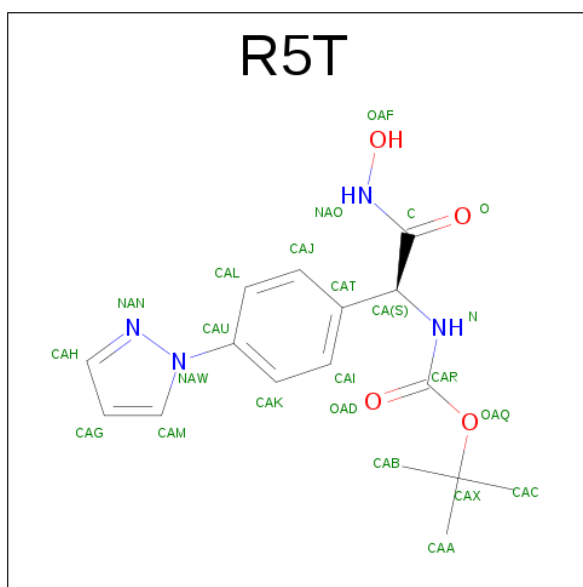
Mol	Chain	Residues	Atoms			ZeroOcc	AltConf
4	A	1	Total	O	S	0	0
			5	4	1		
4	A	1	Total	O	S	0	0
			5	4	1		
4	A	1	Total	O	S	0	0
			5	4	1		
4	A	1	Total	O	S	0	0
			5	4	1		
4	B	1	Total	O	S	0	0
			5	4	1		
4	B	1	Total	O	S	0	0
			5	4	1		
4	C	1	Total	O	S	0	0
			5	4	1		
4	C	1	Total	O	S	0	0
			5	4	1		

Continued on next page...

Continued from previous page...

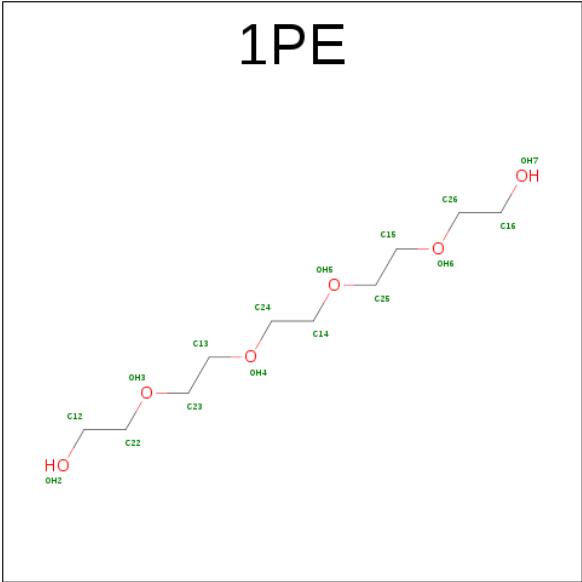
Mol	Chain	Residues	Atoms			ZeroOcc	AltConf
4	C	1	Total	O	S	0	0
			5	4	1		
4	E	1	Total	O	S	0	0
			5	4	1		
4	F	1	Total	O	S	0	0
			5	4	1		
4	F	1	Total	O	S	0	0
			5	4	1		
4	G	1	Total	O	S	0	0
			5	4	1		
4	G	1	Total	O	S	0	0
			5	4	1		
4	H	1	Total	O	S	0	0
			5	4	1		
4	J	1	Total	O	S	0	0
			5	4	1		
4	J	1	Total	O	S	0	0
			5	4	1		
4	K	1	Total	O	S	0	0
			5	4	1		
4	K	1	Total	O	S	0	0
			5	4	1		
4	K	1	Total	O	S	0	0
			5	4	1		
4	L	1	Total	O	S	0	0
			5	4	1		
4	L	1	Total	O	S	0	0
			5	4	1		
4	L	1	Total	O	S	0	0
			5	4	1		

- Molecule 5 is TERT-BUTYL {(1S)-2-(HYDROXYAMINO)-2-OXO-1-[4-(1H-PYRAZOL-1-YL)PHENYL]ETHYL}CARBAMATE (three-letter code: R5T) (formula: C₁₆H₂₀N₄O₄).



Mol	Chain	Residues	Atoms				ZeroOcc	AltConf
5	A	1	Total	C	N	O	0	0
			24	16	4	4		
5	B	1	Total	C	N	O	0	0
			24	16	4	4		
5	C	1	Total	C	N	O	0	0
			24	16	4	4		
5	D	1	Total	C	N	O	0	0
			24	16	4	4		
5	E	1	Total	C	N	O	0	0
			24	16	4	4		
5	F	1	Total	C	N	O	0	0
			24	16	4	4		
5	G	1	Total	C	N	O	0	0
			24	16	4	4		
5	H	1	Total	C	N	O	0	0
			24	16	4	4		
5	I	1	Total	C	N	O	0	0
			24	16	4	4		
5	J	1	Total	C	N	O	0	0
			24	16	4	4		
5	K	1	Total	C	N	O	0	0
			24	16	4	4		
5	L	1	Total	C	N	O	0	0
			21	13	4	4		

- Molecule 6 is PENTAETHYLENE GLYCOL (three-letter code: 1PE) (formula: C₁₀H₂₂O₆).



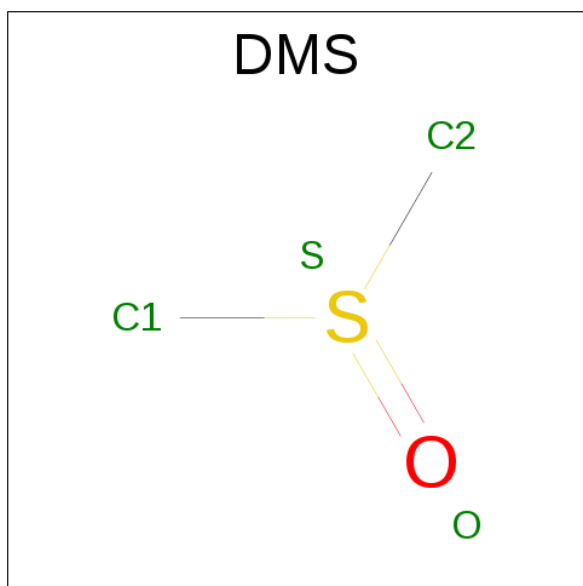
Mol	Chain	Residues	Atoms			ZeroOcc	AltConf
6	A	1	Total	C	O	0	0
			9	6	3		
6	B	1	Total	C	O	0	0
			14	9	5		
6	B	1	Total	C	O	0	0
			7	4	3		
6	C	1	Total	C	O	0	0
			12	8	4		
6	C	1	Total	C	O	0	0
			9	6	3		
6	C	1	Total	C	O	0	0
			8	5	3		
6	D	1	Total	C	O	0	0
			9	6	3		
6	E	1	Total	C	O	0	0
			12	8	4		
6	E	1	Total	C	O	0	0
			13	9	4		
6	E	1	Total	C	O	0	0
			8	6	2		
6	F	1	Total	C	O	0	0
			8	6	2		
6	F	1	Total	C	O	0	0
			8	6	2		
6	G	1	Total	C	O	0	0
			7	5	2		
6	G	1	Total	C	O	0	0
			10	7	3		

Continued on next page...

Continued from previous page...

Mol	Chain	Residues	Atoms			ZeroOcc	AltConf
6	I	1	Total	C	O	0	0
			13	9	4		
6	I	1	Total	C	O	0	0
			8	5	3		
6	J	1	Total	C	O	0	0
			9	6	3		
6	J	1	Total	C	O	0	0
			12	8	4		
6	K	1	Total	C	O	0	0
			13	9	4		
6	L	1	Total	C	O	0	0
			8	6	2		

- Molecule 7 is DIMETHYL SULFOXIDE (three-letter code: DMS) (formula: C_2H_6OS).



Mol	Chain	Residues	Atoms					ZeroOcc	AltConf
7	G	1	Total	C	H	O	S	0	0
			10	2	6	1	1		

- Molecule 8 is water.

Mol	Chain	Residues	Atoms		ZeroOcc	AltConf
8	A	160	Total	O	0	0
			160	160		
8	B	130	Total	O	0	0
			130	130		

Continued on next page...

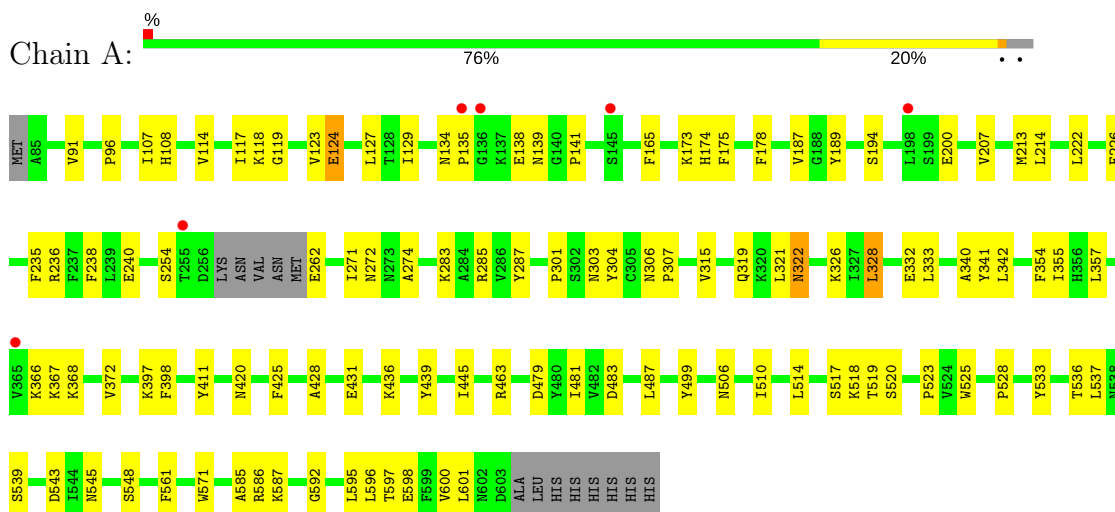
Continued from previous page...

Mol	Chain	Residues	Atoms		ZeroOcc	AltConf
8	C	169	Total 169	O 169	0	0
8	D	151	Total 151	O 151	0	0
8	E	132	Total 132	O 132	0	0
8	F	94	Total 94	O 94	0	0
8	G	149	Total 149	O 149	0	0
8	H	117	Total 117	O 117	0	0
8	I	164	Total 164	O 164	0	0
8	J	154	Total 154	O 154	0	0
8	K	157	Total 157	O 157	0	0
8	L	114	Total 114	O 114	0	0

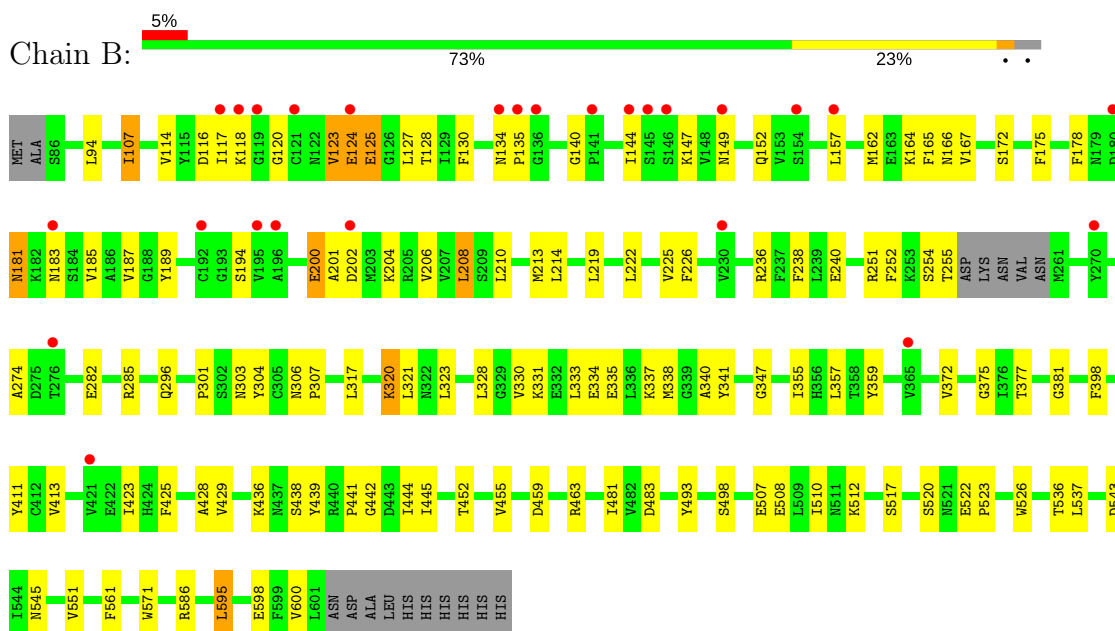
3 Residue-property plots

These plots are drawn for all protein, RNA and DNA chains in the entry. The first graphic for a chain summarises the proportions of the various outlier classes displayed in the second graphic. The second graphic shows the sequence view annotated by issues in geometry and electron density. Residues are color-coded according to the number of geometric quality criteria for which they contain at least one outlier: green = 0, yellow = 1, orange = 2 and red = 3 or more. A red dot above a residue indicates a poor fit to the electron density ($RSRZ > 2$). Stretches of 2 or more consecutive residues without any outlier are shown as a green connector. Residues present in the sample, but not in the model, are shown in grey.

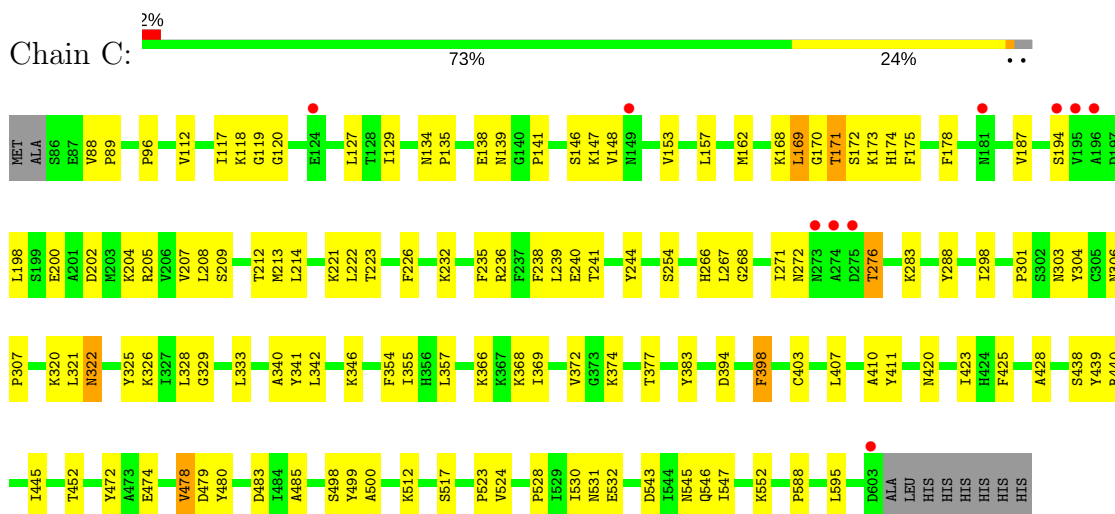
• Molecule 1: M17 leucyl aminopeptidase



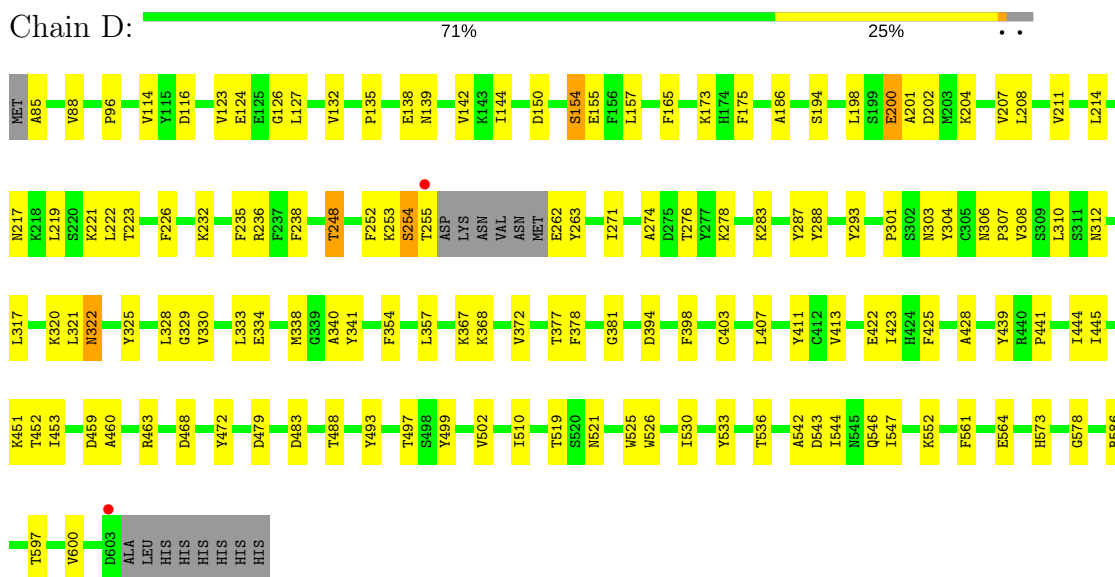
• Molecule 1: M17 leucyl aminopeptidase



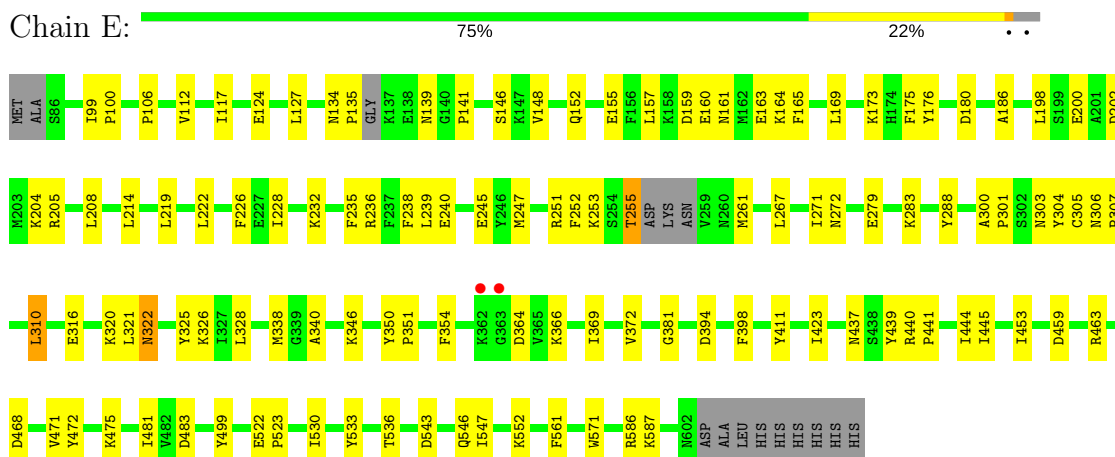
• Molecule 1: M17 leucyl aminopeptidase



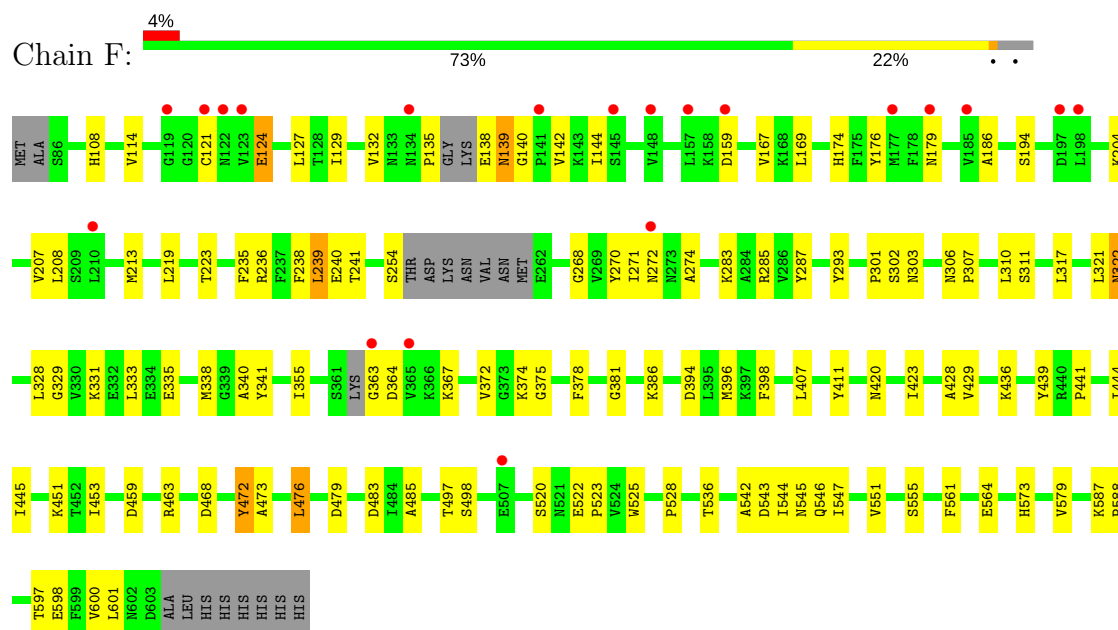
- Molecule 1: M17 leucyl aminopeptidase



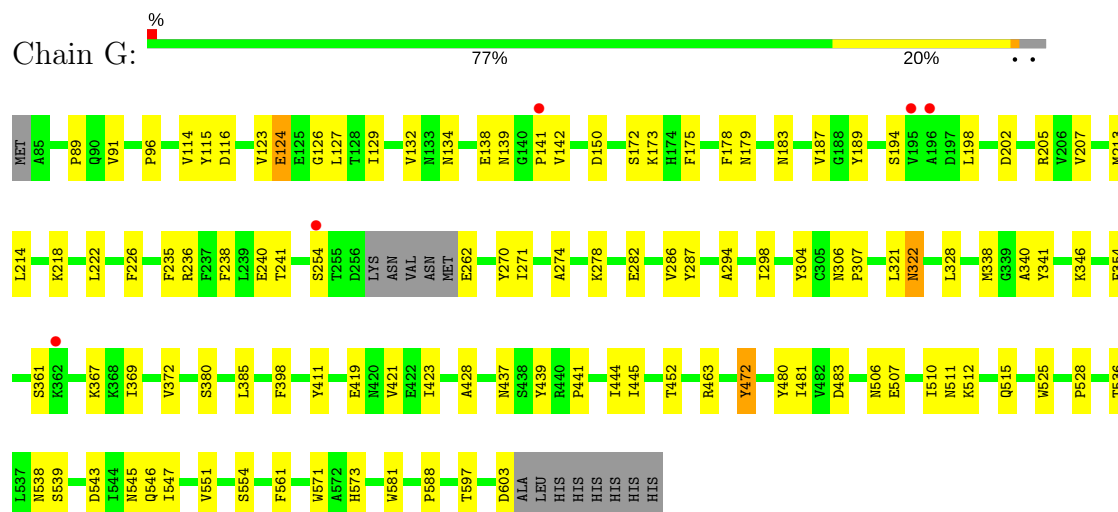
- Molecule 1: M17 leucyl aminopeptidase



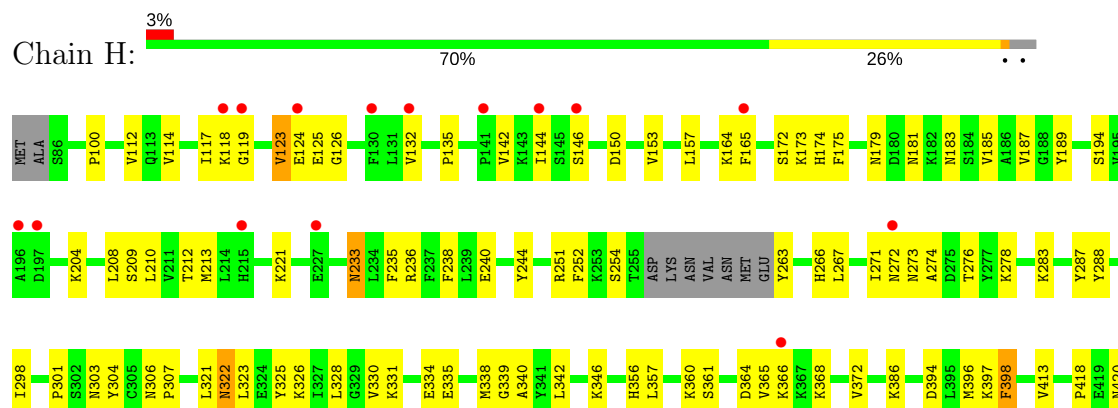
• Molecule 1: M17 leucyl aminopeptidase

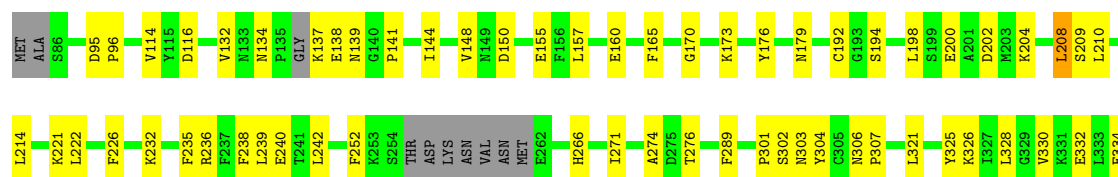


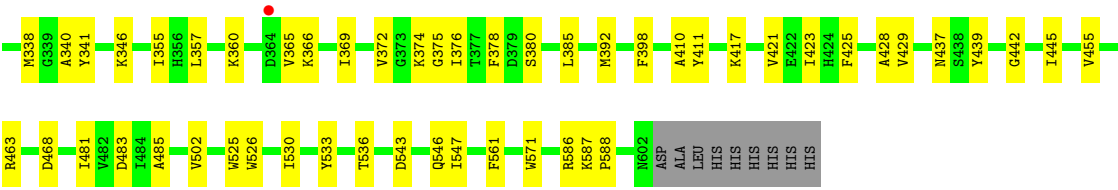
• Molecule 1: M17 leucyl aminopeptidase



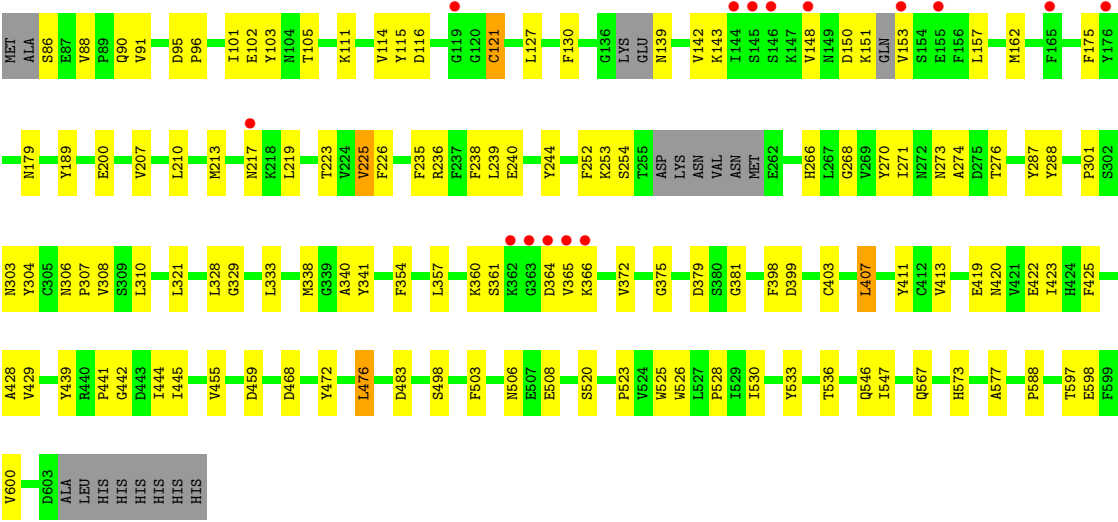
• Molecule 1: M17 leucyl aminopeptidase







• Molecule 1: M17 leucyl aminopeptidase



4 Data and refinement statistics

Property	Value	Source
Space group	P 21 21 21	Depositor
Cell constants a, b, c, α , β , γ	173.90Å 175.93Å 231.65Å 90.00° 90.00° 90.00°	Depositor
Resolution (Å)	46.70 – 2.60 46.70 – 2.60	Depositor EDS
% Data completeness (in resolution range)	87.1 (46.70-2.60) 77.7 (46.70-2.60)	Depositor EDS
R_{merge}	(Not available)	Depositor
R_{sym}	(Not available)	Depositor
$\langle I/\sigma(I) \rangle$ ¹	2.42 (at 2.61Å)	Xtriage
Refinement program	PHENIX (phenix.refine: 1.8.2_1309)	Depositor
R, R_{free}	0.211 , 0.269 0.215 , 0.270	Depositor DCC
R_{free} test set	9435 reflections (5.87%)	DCC
Wilson B-factor (Å ²)	25.0	Xtriage
Anisotropy	0.797	Xtriage
Bulk solvent k_{sol} (e/Å ³), B_{sol} (Å ²)	0.34 , 57.4	EDS
L-test for twinning ²	$\langle L \rangle = 0.48$, $\langle L^2 \rangle = 0.31$	Xtriage
Estimated twinning fraction	0.000 for k,h,-l	Xtriage
F_o, F_c correlation	0.93	EDS
Total number of atoms	49091	wwPDB-VP
Average B, all atoms (Å ²)	47.0	wwPDB-VP

Xtriage's analysis on translational NCS is as follows: *The analyses of the Patterson function reveals a significant off-origin peak that is 45.00 % of the origin peak, indicating pseudo translational symmetry. The chance of finding a peak of this or larger height randomly in a structure without pseudo translational symmetry is equal to 1.4075e-04. The detected translational NCS is most likely also responsible for the elevated intensity ratio.*

¹Intensities estimated from amplitudes.

²Theoretical values of $\langle |L| \rangle$, $\langle L^2 \rangle$ for acentric reflections are 0.5, 0.333 respectively for untwinned datasets, and 0.375, 0.2 for perfectly twinned datasets.

5 Model quality [i](#)

5.1 Standard geometry [i](#)

Bond lengths and bond angles in the following residue types are not validated in this section: ZN, CO3, 1PE, DMS, SO4, R5T

The Z score for a bond length (or angle) is the number of standard deviations the observed value is removed from the expected value. A bond length (or angle) with $|Z| > 5$ is considered an outlier worth inspection. RMSZ is the root-mean-square of all Z scores of the bond lengths (or angles).

Mol	Chain	Bond lengths		Bond angles	
		RMSZ	# Z >5	RMSZ	# Z >5
1	A	0.22	0/4025	0.38	0/5459
1	B	0.23	0/3946	0.41	0/5361
1	C	0.21	0/4027	0.39	0/5465
1	D	0.22	0/3995	0.39	0/5420
1	E	0.23	0/3989	0.39	0/5412
1	F	0.21	0/3860	0.39	0/5254
1	G	0.21	0/4021	0.38	0/5453
1	H	0.21	0/3955	0.39	0/5373
1	I	0.21	0/3985	0.39	0/5410
1	J	0.22	0/3987	0.38	0/5409
1	K	0.21	0/3955	0.38	0/5368
1	L	0.22	0/3897	0.41	0/5298
All	All	0.22	0/47642	0.39	0/64682

There are no bond length outliers.

There are no bond angle outliers.

There are no chirality outliers.

There are no planarity outliers.

5.2 Too-close contacts [i](#)

In the following table, the Non-H and H(model) columns list the number of non-hydrogen atoms and hydrogen atoms in the chain respectively. The H(added) column lists the number of hydrogen atoms added and optimized by MolProbity. The Clashes column lists the number of clashes within the asymmetric unit, whereas Symm-Clashes lists symmetry related clashes.

Mol	Chain	Non-H	H(model)	H(added)	Clashes	Symm-Clashes
1	A	3945	0	3876	82	0

Continued on next page...

Continued from previous page...

Mol	Chain	Non-H	H(model)	H(added)	Clashes	Symm-Clashes
1	B	3869	0	3760	106	0
1	C	3949	0	3873	100	1
1	D	3918	0	3847	107	0
1	E	3913	0	3830	85	2
1	F	3785	0	3598	102	0
1	G	3944	0	3875	85	0
1	H	3878	0	3776	112	0
1	I	3908	0	3800	84	1
1	J	3910	0	3840	84	0
1	K	3879	0	3795	78	1
1	L	3823	0	3664	98	0
2	A	2	0	0	0	0
2	B	2	0	0	0	0
2	C	2	0	0	0	0
2	D	2	0	0	0	0
2	E	2	0	0	0	0
2	F	2	0	0	0	0
2	G	2	0	0	0	0
2	H	2	0	0	0	0
2	I	2	0	0	0	0
2	J	2	0	0	0	0
2	K	2	0	0	0	0
2	L	2	0	0	0	0
3	A	4	0	0	1	0
3	B	4	0	0	0	0
3	C	4	0	0	0	0
3	D	4	0	0	0	0
3	E	4	0	0	0	0
3	F	4	0	0	0	0
3	G	4	0	0	0	0
3	H	4	0	0	0	0
3	I	4	0	0	0	0
3	J	4	0	0	0	0
3	K	4	0	0	0	0
3	L	4	0	0	0	0
4	A	20	0	0	0	0
4	B	10	0	0	2	0
4	C	15	0	0	0	0
4	E	5	0	0	0	0
4	F	10	0	0	1	0
4	G	10	0	0	0	0
4	H	5	0	0	1	0

Continued on next page...

Continued from previous page...

Mol	Chain	Non-H	H(model)	H(added)	Clashes	Symm-Clashes
4	J	10	0	0	0	0
4	K	15	0	0	1	0
4	L	15	0	0	1	0
5	A	24	0	20	0	0
5	B	24	0	19	0	0
5	C	24	0	20	0	0
5	D	24	0	19	1	0
5	E	24	0	19	0	0
5	F	24	0	19	1	0
5	G	24	0	19	1	0
5	H	24	0	19	1	0
5	I	24	0	20	0	0
5	J	24	0	19	0	0
5	K	24	0	19	0	0
5	L	21	0	10	1	0
6	A	9	0	10	2	0
6	B	21	0	26	6	0
6	C	29	0	32	13	0
6	D	9	0	10	1	0
6	E	33	0	36	10	0
6	F	16	0	16	2	0
6	G	17	0	16	2	0
6	I	21	0	22	3	0
6	J	21	0	22	3	0
6	K	13	0	14	1	0
6	L	8	0	8	0	0
7	G	4	6	6	2	0
8	A	160	0	0	5	0
8	B	130	0	0	1	0
8	C	169	0	0	1	0
8	D	151	0	0	5	0
8	E	132	0	0	4	0
8	F	94	0	0	1	0
8	G	149	0	0	9	1
8	H	117	0	0	5	0
8	I	164	0	0	7	0
8	J	154	0	0	3	0
8	K	157	0	0	3	0
8	L	114	0	0	5	0
All	All	49085	6	45974	1047	3

The all-atom clashscore is defined as the number of clashes found per 1000 atoms (including hydrogen atoms). The all-atom clashscore for this structure is 11.

All (1047) close contacts within the same asymmetric unit are listed below, sorted by their clash magnitude.

Atom-1	Atom-2	Interatomic distance (Å)	Clash overlap (Å)
1:L:157:LEU:HA	1:L:162:MET:HE3	1.42	0.99
1:G:545:ASN:ND2	8:G:1180:HOH:O	1.98	0.97
1:I:366:LYS:HE2	1:I:420:ASN:HB3	1.47	0.94
1:F:174:HIS:HB3	1:F:213:MET:HE1	1.48	0.94
1:L:360:LYS:HD2	1:L:422:GLU:HG3	1.52	0.90
1:H:366:LYS:HE2	1:H:420:ASN:HB3	1.55	0.88
1:J:213:MET:O	1:J:217:ASN:ND2	2.07	0.88
6:C:1010:1PE:H142	1:D:201:ALA:HB2	1.54	0.87
1:H:366:LYS:HE2	1:H:420:ASN:CB	2.06	0.86
1:B:124:GLU:HA	1:B:185:VAL:CG1	2.07	0.85
1:J:320:LYS:HE2	6:J:1006:1PE:H152	1.62	0.82
1:C:366:LYS:HE2	1:C:420:ASN:HB3	1.60	0.81
1:E:320:LYS:HZ3	6:E:1006:1PE:H151	1.44	0.81
1:H:423:ILE:HD11	1:H:600:VAL:HG11	1.63	0.81
1:I:366:LYS:HE2	1:I:420:ASN:CB	2.11	0.80
1:H:144:ILE:HD12	1:H:157:LEU:HB3	1.65	0.79
1:J:176:TYR:OH	1:J:217:ASN:OD1	2.00	0.78
1:B:124:GLU:HA	1:B:185:VAL:HG11	1.64	0.78
1:F:129:ILE:HD11	1:F:213:MET:HE2	1.66	0.78
1:L:365:VAL:HG12	1:L:366:LYS:H	1.47	0.78
1:L:520:SER:HB3	1:L:598:GLU:HG3	1.64	0.78
1:J:114:VAL:HG12	1:J:274:ALA:HB1	1.66	0.77
1:C:340:ALA:HA	1:C:445:ILE:HD12	1.64	0.77
1:D:357:LEU:HB2	1:D:425:PHE:HB2	1.66	0.77
1:H:338:MET:HE3	1:H:468:ASP:HB3	1.67	0.77
1:L:413:VAL:HG11	1:L:423:ILE:HD12	1.67	0.77
1:G:114:VAL:HG12	1:G:274:ALA:HB1	1.68	0.76
1:H:339:GLY:O	8:H:1195:HOH:O	2.02	0.76
1:C:366:LYS:HE2	1:C:420:ASN:CB	2.15	0.75
1:J:452:THR:HG23	1:J:543:ASP:H	1.50	0.75
1:C:221:LYS:HG3	1:C:266:HIS:HB2	1.69	0.74
1:K:232:LYS:NZ	1:K:276:THR:O	2.21	0.74
1:F:238:PHE:HD2	1:F:239:LEU:HD13	1.53	0.74
1:G:411:TYR:HE1	6:G:1008:1PE:H232	1.52	0.74
1:A:178:PHE:HZ	1:D:155:GLU:HG2	1.53	0.73
1:L:423:ILE:HD11	1:L:600:VAL:HG11	1.71	0.73
1:H:577:ALA:HB1	5:H:1005:R5T:H20	1.70	0.72
1:D:452:THR:HG23	1:D:543:ASP:H	1.54	0.72
1:C:157:LEU:HA	1:C:162:MET:HE3	1.71	0.72
1:F:338:MET:CE	1:F:468:ASP:HB3	2.19	0.71

Continued on next page...

Continued from previous page...

Atom-1	Atom-2	Interatomic distance (Å)	Clash overlap (Å)
1:J:338:MET:HE3	1:J:468:ASP:HB3	1.71	0.71
1:E:338:MET:CE	1:E:468:ASP:HB3	2.21	0.71
1:L:365:VAL:HG12	1:L:366:LYS:N	2.06	0.71
1:E:328:LEU:HB2	1:E:354:PHE:HB3	1.71	0.71
1:E:338:MET:HE3	1:E:468:ASP:HB3	1.71	0.71
1:G:214:LEU:HD21	1:G:222:LEU:HD22	1.72	0.70
1:D:340:ALA:HA	1:D:445:ILE:HD12	1.72	0.70
1:G:536:THR:HG21	1:G:551:VAL:HG23	1.74	0.70
1:H:221:LYS:HG3	1:H:266:HIS:HB2	1.72	0.70
1:C:117:ILE:HD11	1:C:146:SER:OG	1.92	0.70
1:L:273:ASN:O	1:L:276:THR:HG22	1.91	0.70
1:L:338:MET:CE	1:L:468:ASP:HB3	2.21	0.69
1:C:127:LEU:HD21	1:C:129:ILE:HD11	1.75	0.69
1:D:338:MET:CE	1:D:468:ASP:HB3	2.21	0.69
1:F:138:GLU:CB	1:F:140:GLY:H	2.04	0.69
1:J:340:ALA:HA	1:J:445:ILE:HD12	1.74	0.69
1:E:198:LEU:HD22	1:E:202:ASP:HB3	1.73	0.69
1:G:367:LYS:NZ	8:G:1227:HOH:O	2.25	0.69
1:C:178:PHE:HZ	1:E:155:GLU:HG2	1.58	0.69
1:K:338:MET:CE	1:K:468:ASP:HB3	2.23	0.69
1:L:340:ALA:HA	1:L:445:ILE:HD12	1.72	0.69
1:J:107:ILE:O	1:J:285:ARG:NH1	2.23	0.69
1:G:367:LYS:HD2	1:G:603:ASP:OD2	1.93	0.68
1:J:217:ASN:HB3	1:J:219:LEU:HG	1.74	0.68
1:H:338:MET:CE	1:H:468:ASP:HB3	2.22	0.68
1:I:536:THR:HG21	1:I:551:VAL:HG23	1.76	0.68
1:J:127:LEU:HB2	1:J:219:LEU:HD22	1.76	0.68
1:D:253:LYS:NZ	1:F:542:ALA:O	2.26	0.68
1:B:320:LYS:HE3	6:B:1007:1PE:H151	1.75	0.68
1:E:232:LYS:NZ	1:E:279:GLU:OE2	2.26	0.68
1:H:423:ILE:HD11	1:H:600:VAL:CG1	2.24	0.68
1:K:138:GLU:HA	1:K:194:SER:OG	1.94	0.68
1:E:320:LYS:NZ	6:E:1006:1PE:H141	2.09	0.68
1:K:338:MET:HE3	1:K:468:ASP:HB3	1.74	0.68
1:L:360:LYS:CD	1:L:422:GLU:HG3	2.24	0.67
1:G:205:ARG:NE	8:G:1171:HOH:O	2.25	0.67
1:G:173:LYS:NZ	8:G:1179:HOH:O	2.22	0.67
1:F:138:GLU:N	1:F:140:GLY:H	1.93	0.67
1:B:172:SER:HB2	1:B:213:MET:CE	2.25	0.67
1:B:340:ALA:HA	1:B:445:ILE:HD12	1.75	0.67
1:D:320:LYS:HB3	6:D:1005:1PE:H231	1.75	0.67

Continued on next page...

Continued from previous page...

Atom-1	Atom-2	Interatomic distance (Å)	Clash overlap (Å)
1:H:233:ASN:ND2	1:H:519:THR:O	2.28	0.67
1:F:340:ALA:HA	1:F:445:ILE:HD12	1.76	0.66
1:D:552:LYS:NZ	8:D:1251:HOH:O	2.28	0.66
1:B:172:SER:HB2	1:B:213:MET:HE1	1.76	0.66
1:D:114:VAL:HG12	1:D:274:ALA:HB1	1.77	0.66
1:L:111:LYS:HD2	1:L:266:HIS:CE1	2.30	0.66
1:L:577:ALA:HB1	5:L:1006:R5T:H20	1.77	0.66
1:E:320:LYS:NZ	6:E:1006:1PE:H151	2.10	0.66
1:I:232:LYS:NZ	1:I:280:GLU:OE2	2.20	0.66
1:C:172:SER:O	1:C:173:LYS:HD2	1.95	0.65
1:K:587:LYS:HB2	1:K:588:PRO:HD2	1.78	0.65
1:H:273:ASN:O	1:H:276:THR:HG22	1.96	0.65
1:J:452:THR:HG21	1:K:252:PHE:O	1.96	0.65
1:H:321:LEU:O	1:H:322:ASN:HB2	1.96	0.65
1:L:328:LEU:HB2	1:L:354:PHE:HB3	1.79	0.65
1:E:117:ILE:HD11	1:E:146:SER:OG	1.97	0.65
1:H:144:ILE:CD1	1:H:157:LEU:HB3	2.25	0.65
1:I:340:ALA:HA	1:I:445:ILE:HD12	1.78	0.65
1:G:218:LYS:HD2	1:J:164:LYS:HA	1.77	0.65
1:G:411:TYR:CE1	6:G:1008:1PE:H232	2.31	0.65
1:G:254:SER:HB3	1:I:543:ASP:OD2	1.97	0.65
1:J:338:MET:CE	1:J:468:ASP:HB3	2.26	0.65
1:G:480:TYR:OH	1:G:512:LYS:NZ	2.30	0.65
1:J:452:THR:CG2	1:J:543:ASP:H	2.10	0.65
1:A:326:LYS:HG2	1:A:328:LEU:CD1	2.28	0.64
1:A:586:ARG:HH22	1:C:545:ASN:HD21	1.46	0.64
1:G:178:PHE:HZ	1:J:155:GLU:HG2	1.61	0.64
1:H:172:SER:HB2	1:H:213:MET:CE	2.27	0.64
1:D:135:PRO:HA	1:D:194:SER:O	1.97	0.64
1:F:127:LEU:HD21	1:F:213:MET:HE2	1.78	0.64
1:F:338:MET:HE3	1:F:468:ASP:HB3	1.78	0.64
1:C:306:ASN:HB2	1:C:307:PRO:HD2	1.79	0.64
1:G:538:ASN:O	8:G:1180:HOH:O	2.15	0.64
1:F:483:ASP:OD1	1:F:573:HIS:ND1	2.29	0.64
1:H:175:PHE:N	1:H:187:VAL:O	2.29	0.64
1:C:531:ASN:H	6:C:1010:1PE:H132	1.63	0.64
1:G:96:PRO:HG3	1:G:304:TYR:CD2	2.33	0.64
1:D:452:THR:CG2	1:D:543:ASP:H	2.11	0.64
1:A:226:PHE:HZ	1:A:238:PHE:CD2	2.15	0.64
1:F:207:VAL:HG11	1:F:241:THR:HG22	1.79	0.63
1:G:306:ASN:HB2	1:G:307:PRO:HD2	1.79	0.63

Continued on next page...

Continued from previous page...

Atom-1	Atom-2	Interatomic distance (Å)	Clash overlap (Å)
1:H:360:LYS:HE2	1:H:365:VAL:HG21	1.78	0.63
1:J:217:ASN:HB2	1:J:219:LEU:HD11	1.81	0.63
1:B:320:LYS:HE2	6:B:1007:1PE:C22	2.29	0.63
1:A:306:ASN:HB2	1:A:307:PRO:HD2	1.80	0.63
1:A:107:ILE:O	1:A:285:ARG:NH1	2.31	0.63
1:J:306:ASN:HB2	1:J:307:PRO:HD2	1.80	0.63
1:J:423:ILE:HD11	1:J:600:VAL:HG11	1.81	0.63
1:K:289:PHE:CE2	6:K:1008:1PE:H132	2.34	0.63
1:B:157:LEU:HA	1:B:162:MET:HE3	1.80	0.63
1:D:274:ALA:O	1:D:278:LYS:HG3	1.98	0.63
1:H:204:LYS:O	1:H:208:LEU:HD23	1.98	0.63
1:H:306:ASN:HB2	1:H:307:PRO:HD2	1.81	0.63
1:I:175:PHE:N	1:I:187:VAL:O	2.31	0.63
1:I:204:LYS:O	1:I:208:LEU:HD22	1.99	0.63
1:B:175:PHE:N	1:B:187:VAL:O	2.29	0.63
1:B:306:ASN:HB2	1:B:307:PRO:HD2	1.81	0.62
1:C:368:LYS:O	1:C:478:VAL:HG22	1.99	0.62
6:C:1010:1PE:C14	1:D:201:ALA:HB2	2.29	0.62
1:H:117:ILE:HD11	1:H:146:SER:OG	1.99	0.62
1:A:254:SER:HB3	1:C:543:ASP:OD2	1.99	0.62
1:G:138:GLU:HA	1:G:194:SER:OG	1.99	0.62
1:C:204:LYS:O	1:C:208:LEU:HD13	2.00	0.62
1:A:262:GLU:N	8:A:1135:HOH:O	2.32	0.62
1:L:306:ASN:HB2	1:L:307:PRO:HD2	1.80	0.62
1:B:536:THR:HG21	1:B:551:VAL:HG23	1.81	0.62
1:G:126:GLY:H	7:G:1009:DMS:C2	2.13	0.62
1:G:340:ALA:HA	1:G:445:ILE:HD12	1.80	0.62
1:L:338:MET:HE2	1:L:468:ASP:HB3	1.80	0.62
1:D:413:VAL:HG11	1:D:423:ILE:HD12	1.80	0.62
1:D:452:THR:HG21	1:E:252:PHE:O	1.98	0.62
1:K:148:VAL:HG21	1:K:157:LEU:HD12	1.81	0.62
1:B:124:GLU:HA	1:B:185:VAL:HG12	1.78	0.62
1:I:306:ASN:HB2	1:I:307:PRO:HD2	1.81	0.62
1:G:172:SER:HB2	1:G:213:MET:CE	2.30	0.62
1:I:103:TYR:CD1	6:I:1005:1PE:H241	2.34	0.62
1:K:306:ASN:HB2	1:K:307:PRO:HD2	1.81	0.62
1:L:153:VAL:N	8:L:1128:HOH:O	2.33	0.62
1:C:198:LEU:HD22	1:C:202:ASP:HB3	1.82	0.62
1:H:413:VAL:HG11	1:H:423:ILE:HD12	1.82	0.62
1:A:321:LEU:O	1:A:322:ASN:HB2	2.00	0.61
1:A:129:ILE:HD12	1:A:213:MET:HE1	1.80	0.61

Continued on next page...

Continued from previous page...

Atom-1	Atom-2	Interatomic distance (Å)	Clash overlap (Å)
1:D:96:PRO:HG3	1:D:304:TYR:CD2	2.35	0.61
1:H:208:LEU:O	1:H:212:THR:HG23	1.99	0.61
1:E:226:PHE:HZ	1:E:238:PHE:CD2	2.17	0.61
1:H:124:GLU:O	1:H:185:VAL:HG12	2.01	0.61
1:H:340:ALA:HA	1:H:445:ILE:HD12	1.82	0.61
1:A:108:HIS:HA	1:A:285:ARG:HH11	1.66	0.61
1:F:363:GLY:O	1:I:220:SER:HB3	2.00	0.61
1:L:157:LEU:HA	1:L:162:MET:CE	2.27	0.61
1:D:368:LYS:NZ	1:D:422:GLU:OE2	2.28	0.61
1:I:436:LYS:NZ	8:I:1240:HOH:O	2.33	0.61
1:F:114:VAL:HG12	1:F:274:ALA:HB1	1.81	0.61
1:J:217:ASN:HB3	1:J:219:LEU:CG	2.31	0.61
1:B:236:ARG:NE	1:B:240:GLU:OE2	2.29	0.61
1:C:175:PHE:N	1:C:187:VAL:O	2.32	0.61
1:F:138:GLU:N	1:F:139:ASN:HA	2.15	0.61
1:A:129:ILE:CD1	1:A:213:MET:HE1	2.31	0.60
1:B:452:THR:HG23	1:C:254:SER:HB2	1.83	0.60
1:D:306:ASN:HB2	1:D:307:PRO:HD2	1.82	0.60
1:E:306:ASN:HB2	1:E:307:PRO:HD2	1.81	0.60
1:G:536:THR:HG21	1:G:551:VAL:CG2	2.31	0.60
1:E:169:LEU:HD11	1:E:205:ARG:HB3	1.84	0.60
1:I:261:MET:N	8:I:1227:HOH:O	2.34	0.60
1:J:413:VAL:HG11	1:J:423:ILE:HD12	1.83	0.60
1:F:306:ASN:HB2	1:F:307:PRO:HD2	1.83	0.60
1:L:423:ILE:HD11	1:L:600:VAL:CG1	2.31	0.60
1:D:338:MET:HE3	1:D:468:ASP:HB3	1.82	0.60
1:B:423:ILE:HD11	1:B:600:VAL:CG1	2.32	0.60
1:H:164:LYS:HE3	1:H:165:PHE:CZ	2.36	0.60
1:K:226:PHE:HZ	1:K:238:PHE:CD2	2.20	0.60
1:K:148:VAL:HG21	1:K:157:LEU:CD1	2.32	0.60
1:L:226:PHE:HZ	1:L:238:PHE:CD2	2.20	0.60
1:B:320:LYS:HG3	6:B:1007:1PE:H152	1.83	0.60
1:C:172:SER:C	1:C:173:LYS:HD2	2.22	0.60
1:B:107:ILE:HD13	1:B:107:ILE:N	2.17	0.59
1:D:403:CYS:O	1:D:407:LEU:HD13	2.02	0.59
1:E:533:TYR:O	1:E:536:THR:HG22	2.02	0.59
1:F:436:LYS:NZ	4:F:1004:SO4:O3	2.34	0.59
1:J:138:GLU:HA	1:J:194:SER:OG	2.01	0.59
1:D:165:PHE:CD2	1:D:173:LYS:HG3	2.37	0.59
1:E:321:LEU:O	1:E:322:ASN:HB2	2.02	0.59
1:C:341:TYR:CE1	1:C:428:ALA:HB1	2.37	0.59

Continued on next page...

Continued from previous page...

Atom-1	Atom-2	Interatomic distance (Å)	Clash overlap (Å)
1:K:533:TYR:O	1:K:536:THR:HG22	2.02	0.59
1:C:157:LEU:HA	1:C:162:MET:CE	2.33	0.59
1:I:226:PHE:HZ	1:I:238:PHE:CD2	2.21	0.59
1:C:532:GLU:HB2	6:C:1010:1PE:H242	1.85	0.59
1:H:423:ILE:CD1	1:H:600:VAL:HG11	2.32	0.59
1:J:451:LYS:NZ	8:J:1115:HOH:O	2.36	0.59
1:L:121:CYS:HA	1:L:270:TYR:CE1	2.38	0.59
1:L:472:TYR:O	1:L:476:LEU:HD13	2.03	0.59
1:I:208:LEU:O	1:I:212:THR:HG23	2.03	0.59
1:K:301:PRO:HB2	1:K:303:ASN:OD1	2.03	0.59
1:A:114:VAL:HG12	1:A:274:ALA:HB1	1.84	0.59
1:A:342:LEU:HD12	1:B:94:LEU:HD12	1.83	0.59
1:L:139:ASN:N	8:L:1155:HOH:O	2.36	0.59
1:F:108:HIS:HA	1:F:285:ARG:HH11	1.68	0.58
1:F:138:GLU:CA	1:F:140:GLY:H	2.16	0.58
1:G:511:ASN:O	1:G:515:GLN:HG3	2.03	0.58
1:L:526:TRP:HB3	4:L:1008:SO4:O1	2.03	0.58
1:L:114:VAL:HG12	1:L:274:ALA:HB1	1.86	0.58
1:B:226:PHE:HZ	1:B:238:PHE:CD2	2.21	0.58
1:B:120:GLY:HA2	1:B:147:LYS:O	2.03	0.58
1:H:274:ALA:O	1:H:278:LYS:HG3	2.02	0.58
1:K:204:LYS:O	1:K:208:LEU:HD22	2.03	0.58
1:K:543:ASP:OD2	1:L:254:SER:HB3	2.02	0.58
1:G:274:ALA:O	1:G:278:LYS:HG3	2.04	0.58
1:J:423:ILE:HD11	1:J:600:VAL:CG1	2.34	0.58
1:B:320:LYS:HG3	6:B:1007:1PE:C15	2.34	0.58
1:D:96:PRO:HG3	1:D:304:TYR:CE2	2.39	0.58
1:G:321:LEU:O	1:G:322:ASN:HB2	2.02	0.58
1:H:368:LYS:HE3	1:H:422:GLU:OE2	2.03	0.58
1:A:533:TYR:O	1:A:536:THR:HG22	2.03	0.58
1:I:123:VAL:CG1	1:I:185:VAL:HG11	2.34	0.58
1:A:96:PRO:HG3	1:A:304:TYR:CD2	2.38	0.58
1:L:365:VAL:CG1	1:L:366:LYS:H	2.14	0.58
1:L:403:CYS:O	1:L:407:LEU:HD22	2.04	0.58
1:A:528:PRO:HB3	1:F:525:TRP:CZ3	2.39	0.57
1:D:542:ALA:O	1:E:253:LYS:NZ	2.33	0.57
1:J:262:GLU:N	8:J:1169:HOH:O	2.36	0.57
1:B:441:PRO:HB2	1:C:394:ASP:HA	1.87	0.57
1:C:172:SER:HB2	1:C:213:MET:HE1	1.86	0.57
1:C:403:CYS:O	1:C:407:LEU:HD13	2.05	0.57
1:D:232:LYS:NZ	1:D:276:THR:O	2.37	0.57

Continued on next page...

Continued from previous page...

Atom-1	Atom-2	Interatomic distance (Å)	Clash overlap (Å)
1:H:179:ASN:ND2	1:H:183:ASN:HB2	2.19	0.57
1:I:316:GLU:HG3	6:I:1005:1PE:C12	2.35	0.57
1:K:417:LYS:NZ	8:K:1194:HOH:O	2.35	0.57
1:D:338:MET:HE2	1:D:468:ASP:HB3	1.84	0.57
1:E:245:GLU:OE1	1:E:587:LYS:NZ	2.29	0.57
1:D:226:PHE:HZ	1:D:238:PHE:CD2	2.21	0.57
1:H:172:SER:HB2	1:H:213:MET:HE3	1.87	0.57
1:H:543:ASP:OD2	1:I:254:SER:HB3	2.05	0.57
1:I:326:LYS:HE3	8:I:1242:HOH:O	2.04	0.57
1:F:536:THR:HG21	1:F:551:VAL:CG2	2.34	0.57
1:E:204:LYS:O	1:E:208:LEU:HD13	2.03	0.57
1:G:127:LEU:HD21	1:G:129:ILE:HD11	1.86	0.57
1:G:372:VAL:O	1:G:483:ASP:HA	2.04	0.57
1:I:341:TYR:CE1	1:I:428:ALA:HB1	2.40	0.57
1:L:375:GLY:O	1:L:429:VAL:HA	2.05	0.57
1:D:248:THR:HG23	1:D:263:TYR:OH	2.05	0.57
1:J:357:LEU:HB2	1:J:425:PHE:HB2	1.86	0.57
1:F:587:LYS:HB2	1:F:588:PRO:HD2	1.87	0.57
1:G:198:LEU:HD22	1:G:202:ASP:HB3	1.86	0.57
1:A:301:PRO:HB2	1:A:303:ASN:OD1	2.05	0.56
1:F:520:SER:HB3	1:F:598:GLU:HG3	1.85	0.56
1:F:338:MET:HE2	1:F:468:ASP:HB3	1.85	0.56
1:F:423:ILE:HD13	1:F:600:VAL:HG11	1.87	0.56
1:L:157:LEU:HD23	1:L:162:MET:CE	2.35	0.56
1:C:172:SER:HB2	1:C:213:MET:CE	2.36	0.56
1:D:198:LEU:HD12	1:D:202:ASP:HB3	1.86	0.56
1:B:164:LYS:HE3	1:B:165:PHE:CZ	2.40	0.56
1:B:517:SER:HA	1:B:595:LEU:HD12	1.86	0.56
1:D:502:VAL:HG13	1:D:526:TRP:HA	1.88	0.56
1:H:179:ASN:HD21	1:H:183:ASN:HB2	1.70	0.56
1:E:411:TYR:CE1	6:E:1005:1PE:H242	2.41	0.56
1:J:226:PHE:HZ	1:J:238:PHE:CD2	2.24	0.56
1:K:360:LYS:HE2	1:K:365:VAL:HG21	1.87	0.56
1:B:543:ASP:OD2	1:C:254:SER:HB3	2.05	0.56
1:A:214:LEU:HD21	1:A:222:LEU:HD22	1.87	0.56
1:J:235:PHE:O	1:J:238:PHE:HB3	2.05	0.56
1:K:198:LEU:HD22	1:K:202:ASP:HB3	1.87	0.56
1:L:148:VAL:HG21	1:L:157:LEU:HD12	1.86	0.56
1:B:200:GLU:HG3	1:B:201:ALA:N	2.19	0.55
1:B:333:LEU:HD22	1:B:338:MET:HE2	1.88	0.55
1:B:321:LEU:HD21	1:B:411:TYR:HA	1.87	0.55

Continued on next page...

Continued from previous page...

Atom-1	Atom-2	Interatomic distance (Å)	Clash overlap (Å)
1:E:471:VAL:HG12	1:E:475:LYS:HE3	1.88	0.55
1:G:306:ASN:HB2	1:G:307:PRO:CD	2.36	0.55
1:H:536:THR:HG21	1:H:551:VAL:HG23	1.88	0.55
1:I:328:LEU:HA	1:I:332:GLU:OE1	2.05	0.55
1:C:306:ASN:HB2	1:C:307:PRO:CD	2.37	0.55
1:F:473:ALA:HA	1:F:476:LEU:HD22	1.89	0.55
1:G:207:VAL:HG11	1:G:241:THR:HG22	1.88	0.55
1:H:321:LEU:HB2	1:H:323:LEU:CD1	2.36	0.55
1:J:135:PRO:HA	1:J:194:SER:O	2.07	0.55
1:L:130:PHE:CE2	1:L:225:VAL:HG11	2.41	0.55
1:L:253:LYS:NZ	8:L:1150:HOH:O	2.38	0.55
1:L:321:LEU:HD11	1:L:411:TYR:HA	1.88	0.55
1:C:236:ARG:HD3	1:C:283:LYS:HD3	1.88	0.55
1:F:204:LYS:O	1:F:208:LEU:HD13	2.07	0.55
1:L:338:MET:HE3	1:L:468:ASP:HB3	1.86	0.55
1:C:157:LEU:HD23	1:C:162:MET:CE	2.37	0.55
1:C:328:LEU:HB2	1:C:354:PHE:HB3	1.88	0.55
1:C:480:TYR:OH	1:C:512:LYS:NZ	2.37	0.55
1:C:552:LYS:HB3	1:D:493:TYR:CD2	2.42	0.55
1:E:301:PRO:HB2	1:E:303:ASN:OD1	2.07	0.55
1:L:150:ASP:OD1	1:L:179:ASN:HB2	2.07	0.55
1:E:306:ASN:HB2	1:E:307:PRO:CD	2.37	0.55
1:G:262:GLU:N	8:G:1131:HOH:O	2.40	0.55
1:A:254:SER:HB2	1:C:452:THR:HG23	1.89	0.54
1:G:172:SER:HB2	1:G:213:MET:HE3	1.88	0.54
1:E:340:ALA:HA	1:E:445:ILE:HD12	1.89	0.54
1:I:315:VAL:HG13	1:I:325:TYR:CE1	2.42	0.54
1:A:96:PRO:HG3	1:A:304:TYR:CE2	2.43	0.54
1:J:452:THR:HG22	1:J:543:ASP:CG	2.28	0.54
1:K:114:VAL:HG12	1:K:274:ALA:HB1	1.89	0.54
1:L:148:VAL:HG21	1:L:157:LEU:CD1	2.38	0.54
1:L:423:ILE:CD1	1:L:600:VAL:HG11	2.36	0.54
1:C:226:PHE:HZ	1:C:238:PHE:CD2	2.25	0.54
1:D:452:THR:HG22	1:D:543:ASP:CG	2.28	0.54
1:F:223:THR:HA	1:F:268:GLY:O	2.07	0.54
1:I:172:SER:HB2	1:I:213:MET:CE	2.37	0.54
1:A:306:ASN:HB2	1:A:307:PRO:CD	2.38	0.54
1:F:386:LYS:HE3	1:F:396:MET:HG3	1.90	0.54
1:D:586:ARG:HH22	1:F:545:ASN:HD21	1.54	0.54
1:H:361:SER:OG	1:H:418:PRO:O	2.26	0.54
1:J:306:ASN:HB2	1:J:307:PRO:CD	2.38	0.54

Continued on next page...

Continued from previous page...

Atom-1	Atom-2	Interatomic distance (Å)	Clash overlap (Å)
1:B:320:LYS:HE3	6:B:1007:1PE:C26	2.38	0.54
1:L:306:ASN:HB2	1:L:307:PRO:CD	2.37	0.54
6:E:1005:1PE:H251	6:E:1006:1PE:H222	1.89	0.54
1:G:543:ASP:OD2	1:H:254:SER:HB3	2.07	0.54
1:J:544:ILE:HD12	1:J:564:GLU:HG3	1.90	0.54
1:C:232:LYS:HD3	1:C:276:THR:HG23	1.89	0.53
1:D:253:LYS:O	1:D:254:SER:HB2	2.08	0.53
1:D:502:VAL:CG1	1:D:526:TRP:HA	2.37	0.53
1:F:135:PRO:HA	1:F:194:SER:O	2.08	0.53
1:I:306:ASN:HB2	1:I:307:PRO:CD	2.38	0.53
1:J:127:LEU:HB2	1:J:219:LEU:CD2	2.38	0.53
1:J:320:LYS:HE2	6:J:1006:1PE:C15	2.37	0.53
1:J:581:TRP:CZ3	1:J:588:PRO:HG3	2.44	0.53
1:B:123:VAL:O	1:B:125:GLU:N	2.42	0.53
1:D:533:TYR:O	1:D:536:THR:HG22	2.08	0.53
1:C:552:LYS:HB3	1:D:493:TYR:CE2	2.43	0.53
1:I:528:PRO:HB3	1:J:525:TRP:CZ3	2.43	0.53
1:B:120:GLY:HA3	1:B:149:ASN:OD1	2.09	0.53
1:B:341:TYR:CE1	1:B:428:ALA:HB1	2.44	0.53
1:B:423:ILE:HD11	1:B:600:VAL:HG13	1.91	0.53
1:C:221:LYS:NZ	1:C:223:THR:HG22	2.23	0.53
1:H:287:TYR:CE1	1:H:597:THR:HG21	2.42	0.53
1:A:366:LYS:HG2	1:A:420:ASN:HB3	1.90	0.53
1:D:204:LYS:O	1:D:208:LEU:HD13	2.09	0.53
1:D:306:ASN:HB2	1:D:307:PRO:CD	2.39	0.53
1:H:499:TYR:CD1	1:H:523:PRO:HB2	2.43	0.53
1:E:261:MET:SD	8:E:1175:HOH:O	2.59	0.53
1:E:310:LEU:HD22	1:E:310:LEU:O	2.09	0.53
1:G:361:SER:OG	1:G:419:GLU:HA	2.09	0.53
1:B:507:GLU:OE2	1:B:507:GLU:N	2.39	0.53
1:C:499:TYR:CD2	1:C:523:PRO:HB2	2.44	0.53
1:B:306:ASN:HB2	1:B:307:PRO:CD	2.39	0.53
1:C:221:LYS:HZ3	1:C:223:THR:HG22	1.74	0.53
1:J:127:LEU:CB	1:J:219:LEU:HD22	2.37	0.53
1:H:528:PRO:HB3	1:K:525:TRP:CZ3	2.44	0.53
1:L:127:LEU:HB3	1:L:219:LEU:HD13	1.90	0.53
1:K:376:ILE:HD12	1:K:376:ILE:N	2.24	0.53
1:E:252:PHE:HE2	1:E:304:TYR:CD1	2.27	0.53
1:F:132:VAL:HG21	1:F:142:VAL:HG13	1.91	0.53
1:I:525:TRP:CZ3	1:J:528:PRO:HB3	2.44	0.53
1:J:533:TYR:O	1:J:536:THR:HG22	2.09	0.53

Continued on next page...

Continued from previous page...

Atom-1	Atom-2	Interatomic distance (Å)	Clash overlap (Å)
1:L:372:VAL:O	1:L:483:ASP:HA	2.09	0.53
1:F:174:HIS:CB	1:F:213:MET:HE1	2.32	0.52
1:H:306:ASN:HB2	1:H:307:PRO:CD	2.40	0.52
1:I:301:PRO:HB2	1:I:303:ASN:OD1	2.09	0.52
1:F:301:PRO:HB2	1:F:303:ASN:OD1	2.09	0.52
1:J:301:PRO:HB2	1:J:303:ASN:OD1	2.10	0.52
1:L:361:SER:OG	1:L:419:GLU:HA	2.07	0.52
1:E:235:PHE:O	1:E:239:LEU:HD13	2.09	0.52
1:L:90:GLN:NE2	1:L:95:ASP:O	2.41	0.52
1:G:226:PHE:HZ	1:G:238:PHE:CD2	2.27	0.52
1:H:346:LYS:HG2	1:H:437:ASN:O	2.09	0.52
1:I:135:PRO:HA	1:I:194:SER:O	2.10	0.52
1:H:452:THR:HG23	1:I:254:SER:HB2	1.92	0.52
1:J:132:VAL:HG21	1:J:142:VAL:HG13	1.91	0.52
1:F:331:LYS:O	1:F:335:GLU:HG3	2.09	0.52
1:A:328:LEU:HA	1:A:332:GLU:OE1	2.08	0.52
1:G:341:TYR:CE1	1:G:428:ALA:HB1	2.45	0.52
1:H:323:LEU:N	1:H:323:LEU:HD12	2.24	0.52
1:I:178:PHE:HZ	1:K:155:GLU:HG2	1.74	0.52
1:K:306:ASN:HB2	1:K:307:PRO:CD	2.39	0.52
1:B:204:LYS:O	1:B:208:LEU:HD22	2.10	0.52
1:B:436:LYS:NZ	4:B:1004:SO4:O1	2.43	0.52
1:G:126:GLY:H	7:G:1009:DMS:H21	1.75	0.52
1:H:124:GLU:HA	1:H:185:VAL:CG1	2.39	0.52
1:D:138:GLU:HA	1:D:194:SER:HB3	1.92	0.52
1:E:160:GLU:O	1:E:163:GLU:HG2	2.10	0.52
1:C:301:PRO:HB2	1:C:303:ASN:OD1	2.10	0.52
1:D:255:THR:HB	1:F:543:ASP:CG	2.31	0.52
1:F:306:ASN:HB2	1:F:307:PRO:CD	2.40	0.52
1:H:135:PRO:HA	1:H:194:SER:O	2.10	0.52
1:H:500:ALA:HB3	1:H:524:VAL:HG22	1.92	0.52
1:L:506:ASN:OD1	1:L:508:GLU:HB3	2.10	0.52
1:D:235:PHE:O	1:D:238:PHE:HB3	2.10	0.51
1:E:543:ASP:OD2	1:F:254:SER:OG	2.17	0.51
1:F:411:TYR:CE1	6:F:1006:1PE:H132	2.45	0.51
1:F:138:GLU:N	1:F:194:SER:HG	2.08	0.51
1:A:600:VAL:HG23	1:A:601:LEU:HD13	1.92	0.51
1:D:301:PRO:HB2	1:D:303:ASN:OD1	2.11	0.51
1:D:320:LYS:HG2	8:D:1121:HOH:O	2.11	0.51
1:F:411:TYR:HE1	6:F:1006:1PE:H242	1.75	0.51
1:I:123:VAL:HG11	1:I:185:VAL:HG11	1.93	0.51

Continued on next page...

Continued from previous page...

Atom-1	Atom-2	Interatomic distance (Å)	Clash overlap (Å)
1:G:328:LEU:HB2	1:G:354:PHE:HB3	1.93	0.51
1:C:112:VAL:HG22	1:C:267:LEU:HB3	1.92	0.51
1:F:341:TYR:CE1	1:F:428:ALA:HB1	2.45	0.51
1:J:298:ILE:HG23	1:J:398:PHE:HA	1.91	0.51
1:C:372:VAL:O	1:C:483:ASP:HA	2.10	0.51
1:D:423:ILE:HD11	1:D:600:VAL:CG1	2.41	0.51
1:H:342:LEU:N	8:H:1195:HOH:O	2.43	0.51
1:L:217:ASN:CG	1:L:219:LEU:HG	2.30	0.51
1:D:329:GLY:O	1:D:333:LEU:HG	2.11	0.51
1:D:287:TYR:CE1	1:D:597:THR:HG21	2.45	0.51
1:E:112:VAL:HG22	1:E:267:LEU:HB3	1.93	0.51
1:H:536:THR:HG21	1:H:551:VAL:CG2	2.41	0.51
1:B:123:VAL:HG13	1:B:128:THR:OG1	2.10	0.51
1:B:381:GLY:HA2	1:B:459:ASP:OD1	2.11	0.51
1:K:326:LYS:HD2	1:K:328:LEU:HD11	1.92	0.51
1:B:157:LEU:HA	1:B:162:MET:CE	2.41	0.51
1:B:372:VAL:O	1:B:483:ASP:HA	2.11	0.51
1:H:301:PRO:HB2	1:H:303:ASN:OD1	2.11	0.51
1:K:372:VAL:O	1:K:483:ASP:HA	2.10	0.51
1:A:207:VAL:HG22	1:A:238:PHE:CE1	2.45	0.51
1:A:539:SER:HA	1:B:586:ARG:HH22	1.76	0.50
1:C:235:PHE:O	1:C:238:PHE:HB3	2.10	0.50
1:E:530:ILE:HD12	1:E:533:TYR:CE1	2.45	0.50
1:F:536:THR:HG21	1:F:551:VAL:HG21	1.93	0.50
1:G:328:LEU:HD11	1:G:472:TYR:HE1	1.76	0.50
1:I:321:LEU:HD11	1:I:411:TYR:HA	1.93	0.50
1:C:208:LEU:O	1:C:212:THR:HG23	2.11	0.50
1:D:394:ASP:HA	1:F:441:PRO:HB2	1.94	0.50
1:G:525:TRP:CZ3	1:L:528:PRO:HB3	2.46	0.50
1:H:114:VAL:HG12	1:H:274:ALA:HB1	1.92	0.50
1:I:506:ASN:O	1:I:510:ILE:HG13	2.12	0.50
1:K:357:LEU:HB2	1:K:425:PHE:HB2	1.93	0.50
1:J:403:CYS:O	1:J:407:LEU:HD13	2.11	0.50
1:A:135:PRO:HA	1:A:194:SER:O	2.11	0.50
1:B:134:ASN:CB	1:B:167:VAL:HG21	2.41	0.50
1:E:471:VAL:O	1:E:475:LYS:HG3	2.11	0.50
1:J:394:ASP:HA	1:L:441:PRO:HB2	1.92	0.50
1:A:236:ARG:HD3	1:A:283:LYS:HD3	1.93	0.50
1:D:221:LYS:NZ	1:D:223:THR:OG1	2.45	0.50
1:I:440:ARG:NH2	8:I:1126:HOH:O	2.45	0.50
1:A:520:SER:HB3	1:A:598:GLU:HG3	1.94	0.50

Continued on next page...

Continued from previous page...

Atom-1	Atom-2	Interatomic distance (Å)	Clash overlap (Å)
1:F:132:VAL:HG11	1:F:144:ILE:HD13	1.94	0.50
1:L:365:VAL:CG1	1:L:366:LYS:N	2.73	0.50
1:A:287:TYR:CE1	1:A:597:THR:HG21	2.47	0.50
1:B:144:ILE:HD12	1:B:157:LEU:HB3	1.92	0.50
1:I:173:LYS:HB2	1:I:189:TYR:CE1	2.47	0.50
1:A:108:HIS:HA	1:A:285:ARG:NH1	2.27	0.50
1:B:375:GLY:O	1:B:429:VAL:HA	2.12	0.50
1:C:235:PHE:O	1:C:239:LEU:HD13	2.11	0.50
1:J:274:ALA:O	1:J:278:LYS:HG3	2.11	0.50
1:B:320:LYS:HE3	6:B:1007:1PE:H262	1.94	0.50
1:B:463:ARG:HB2	1:B:561:PHE:HD1	1.77	0.50
1:A:431:GLU:OE2	1:C:440:ARG:NE	2.45	0.50
1:A:543:ASP:CG	1:B:255:THR:H	2.15	0.49
1:E:173:LYS:NZ	8:E:1113:HOH:O	2.34	0.49
1:J:316:GLU:OE2	6:J:1006:1PE:H142	2.12	0.49
1:K:150:ASP:OD1	1:K:179:ASN:HB2	2.11	0.49
1:K:192:CYS:HB3	1:K:198:LEU:HD11	1.94	0.49
1:K:346:LYS:HE3	1:L:91:VAL:HB	1.94	0.49
1:A:340:ALA:HA	1:A:445:ILE:HD12	1.94	0.49
1:C:532:GLU:HB2	6:C:1010:1PE:C24	2.42	0.49
1:C:532:GLU:H	6:C:1010:1PE:H242	1.76	0.49
1:F:375:GLY:O	1:F:429:VAL:HA	2.12	0.49
1:J:108:HIS:HA	1:J:285:ARG:HH11	1.77	0.49
1:J:214:LEU:HD11	1:J:222:LEU:HD22	1.93	0.49
1:K:137:LYS:N	8:K:1175:HOH:O	2.45	0.49
1:B:520:SER:HB3	1:B:598:GLU:HG3	1.95	0.49
1:C:207:VAL:HG11	1:C:241:THR:HG22	1.94	0.49
1:J:299:ALA:HA	1:J:397:LYS:NZ	2.27	0.49
1:L:310:LEU:O	1:L:310:LEU:HD23	2.11	0.49
1:B:510:ILE:HD13	1:B:526:TRP:NE1	2.27	0.49
1:A:174:HIS:HB3	1:D:175:PHE:CE2	2.47	0.49
1:G:506:ASN:O	1:G:510:ILE:HG13	2.13	0.49
1:L:235:PHE:O	1:L:238:PHE:HB3	2.12	0.49
1:A:134:ASN:ND2	1:A:141:PRO:HD2	2.28	0.49
1:C:138:GLU:HA	1:C:194:SER:HB3	1.94	0.49
1:D:341:TYR:CE1	1:D:428:ALA:HB1	2.47	0.49
1:L:321:LEU:CD1	1:L:411:TYR:HA	2.43	0.49
1:E:475:LYS:NZ	8:E:1179:HOH:O	2.45	0.49
1:F:381:GLY:HA2	1:F:459:ASP:OD1	2.13	0.49
1:A:175:PHE:N	1:A:187:VAL:O	2.42	0.49
1:G:507:GLU:N	1:G:507:GLU:OE1	2.43	0.49

Continued on next page...

Continued from previous page...

Atom-1	Atom-2	Interatomic distance (Å)	Clash overlap (Å)
1:J:483:ASP:OD1	1:J:573:HIS:ND1	2.34	0.49
1:K:235:PHE:O	1:K:238:PHE:HB3	2.12	0.49
1:A:372:VAL:O	1:A:483:ASP:HA	2.12	0.49
1:A:585:ALA:HB1	1:A:587:LYS:HE2	1.94	0.49
1:C:369:ILE:HB	1:C:423:ILE:CD1	2.43	0.49
1:D:330:VAL:O	1:D:334:GLU:HG3	2.12	0.49
1:E:372:VAL:O	1:E:483:ASP:HA	2.12	0.49
1:L:381:GLY:HA2	1:L:459:ASP:OD1	2.12	0.49
1:B:331:LYS:O	1:B:335:GLU:HG3	2.12	0.48
1:F:236:ARG:HD3	1:F:283:LYS:HD3	1.95	0.48
1:G:236:ARG:O	1:G:240:GLU:HG3	2.13	0.48
1:G:581:TRP:CZ3	1:G:588:PRO:HG3	2.48	0.48
1:J:508:GLU:O	1:J:512:LYS:HG3	2.13	0.48
1:K:392:MET:N	4:K:1005:SO4:O3	2.35	0.48
1:A:411:TYR:CE1	6:A:1008:1PE:H252	2.48	0.48
1:E:235:PHE:O	1:E:238:PHE:HB3	2.13	0.48
1:K:302:SER:OG	1:K:378:PHE:HB2	2.14	0.48
1:B:157:LEU:HD23	1:B:162:MET:CE	2.43	0.48
1:C:214:LEU:HD21	1:C:222:LEU:HD22	1.96	0.48
1:F:108:HIS:HA	1:F:285:ARG:NH1	2.28	0.48
1:H:117:ILE:C	1:H:119:GLY:H	2.16	0.48
1:H:298:ILE:HG23	1:H:398:PHE:HA	1.94	0.48
1:C:174:HIS:HB3	1:E:175:PHE:CE2	2.49	0.48
1:K:421:VAL:CG2	1:K:423:ILE:HD11	2.44	0.48
1:K:442:GLY:N	1:K:455:VAL:O	2.41	0.48
1:K:586:ARG:NE	8:K:1126:HOH:O	2.46	0.48
1:A:341:TYR:CE1	1:A:428:ALA:HB1	2.48	0.48
1:B:413:VAL:HG11	1:B:423:ILE:HD12	1.95	0.48
1:D:372:VAL:O	1:D:483:ASP:HA	2.13	0.48
1:F:127:LEU:HB3	1:F:219:LEU:HD13	1.94	0.48
1:K:546:GLN:HG2	1:K:547:ILE:HG23	1.95	0.48
1:A:436:LYS:NZ	4:B:1004:SO4:O1	2.46	0.48
1:H:346:LYS:HG3	1:I:91:VAL:HG11	1.95	0.48
1:J:217:ASN:HB3	1:J:219:LEU:CD2	2.44	0.48
1:L:151:LYS:O	1:L:153:VAL:N	2.47	0.48
1:D:236:ARG:NH2	1:D:519:THR:O	2.46	0.48
1:E:320:LYS:CE	6:E:1006:1PE:H151	2.44	0.48
1:E:236:ARG:HD3	1:E:283:LYS:HD3	1.95	0.48
1:E:99:ILE:HD11	1:E:305:CYS:HA	1.96	0.48
1:F:138:GLU:CB	1:F:140:GLY:N	2.76	0.48
1:H:172:SER:HB2	1:H:213:MET:HE1	1.93	0.48

Continued on next page...

Continued from previous page...

Atom-1	Atom-2	Interatomic distance (Å)	Clash overlap (Å)
1:H:481:ILE:O	1:H:571:TRP:HA	2.13	0.48
1:J:210:LEU:HA	1:J:213:MET:CE	2.44	0.48
1:C:368:LYS:C	1:C:478:VAL:HG22	2.34	0.48
1:F:311:SER:HA	1:F:355:ILE:HD11	1.95	0.48
1:J:210:LEU:HA	1:J:213:MET:HE3	1.95	0.48
1:J:484:ILE:HD11	1:J:576:ILE:HG21	1.94	0.48
1:L:329:GLY:O	1:L:333:LEU:HG	2.14	0.48
1:B:320:LYS:HD2	1:B:320:LYS:N	2.23	0.48
1:C:174:HIS:NE2	1:C:213:MET:HG2	2.29	0.48
1:E:165:PHE:CE2	1:E:173:LYS:HG3	2.48	0.48
1:F:127:LEU:HD13	1:F:186:ALA:HB1	1.95	0.48
1:H:165:PHE:HB3	1:H:189:TYR:OH	2.13	0.48
1:L:157:LEU:HD23	1:L:162:MET:HE1	1.95	0.48
1:L:88:VAL:HG22	1:L:308:VAL:CG1	2.43	0.48
1:D:328:LEU:HB2	1:D:354:PHE:HB3	1.96	0.48
1:D:460:ALA:HB3	1:D:546:GLN:NE2	2.28	0.48
1:J:423:ILE:CD1	1:J:600:VAL:HG11	2.44	0.48
1:K:374:LYS:CE	1:K:376:ILE:HD13	2.44	0.48
1:L:533:TYR:O	1:L:536:THR:HG22	2.13	0.48
1:A:174:HIS:HB3	1:D:175:PHE:CD2	2.49	0.47
1:E:411:TYR:HE1	6:E:1005:1PE:H242	1.78	0.47
1:L:207:VAL:HG22	1:L:238:PHE:CE1	2.49	0.47
1:F:364:ASP:O	1:F:420:ASN:HA	2.13	0.47
1:G:367:LYS:HD3	1:G:480:TYR:CE2	2.49	0.47
1:I:510:ILE:HD13	1:I:526:TRP:NE1	2.29	0.47
1:L:223:THR:HA	1:L:268:GLY:O	2.14	0.47
1:A:236:ARG:O	1:A:240:GLU:HG3	2.15	0.47
1:B:498:SER:O	1:B:523:PRO:HG2	2.14	0.47
1:B:537:LEU:HA	1:B:545:ASN:HB2	1.97	0.47
1:F:322:ASN:ND2	1:K:160:GLU:OE1	2.47	0.47
1:J:329:GLY:O	1:J:333:LEU:HG	2.14	0.47
1:C:244:TYR:OH	1:C:588:PRO:O	2.30	0.47
1:E:338:MET:HE2	1:E:468:ASP:HB3	1.95	0.47
1:F:142:VAL:HG22	1:F:167:VAL:HG12	1.97	0.47
1:H:483:ASP:OD1	1:H:573:HIS:ND1	2.37	0.47
1:J:372:VAL:O	1:J:483:ASP:HA	2.14	0.47
1:K:214:LEU:HD11	1:K:222:LEU:HD22	1.95	0.47
1:K:530:ILE:HD12	1:K:533:TYR:CE1	2.49	0.47
1:I:202:ASP:HA	1:I:205:ARG:HG3	1.96	0.47
1:I:442:GLY:N	1:I:455:VAL:O	2.42	0.47
1:I:498:SER:O	1:I:523:PRO:HG2	2.15	0.47

Continued on next page...

Continued from previous page...

Atom-1	Atom-2	Interatomic distance (Å)	Clash overlap (Å)
1:G:441:PRO:HB2	1:H:394:ASP:HA	1.97	0.47
1:C:531:ASN:HB2	6:C:1010:1PE:H132	1.97	0.47
1:F:293:TYR:CE2	1:F:317:LEU:HD22	2.50	0.47
1:G:150:ASP:OD1	1:G:179:ASN:HB2	2.14	0.47
1:J:299:ALA:HA	1:J:397:LYS:HZ3	1.79	0.47
1:J:321:LEU:HD11	1:J:411:TYR:HA	1.96	0.47
1:K:96:PRO:HG2	1:K:304:TYR:CD2	2.50	0.47
1:D:255:THR:OG1	1:F:451:LYS:HG2	2.15	0.47
1:G:421:VAL:CG2	1:G:423:ILE:HD11	2.45	0.47
1:G:346:LYS:HB3	1:G:437:ASN:O	2.15	0.47
1:L:503:PHE:O	1:L:573:HIS:N	2.38	0.47
1:F:138:GLU:N	1:F:139:ASN:CA	2.77	0.47
1:I:235:PHE:O	1:I:239:LEU:HD13	2.15	0.47
1:I:328:LEU:HD11	8:I:1242:HOH:O	2.14	0.47
1:L:143:LYS:HA	8:L:1134:HOH:O	2.15	0.47
1:L:127:LEU:HB3	1:L:219:LEU:CD1	2.45	0.47
1:E:127:LEU:HB3	1:E:219:LEU:HD13	1.96	0.46
1:E:320:LYS:HZ3	6:E:1006:1PE:H141	1.77	0.46
1:E:481:ILE:O	1:E:571:TRP:HA	2.15	0.46
1:G:175:PHE:N	1:G:187:VAL:O	2.43	0.46
1:G:528:PRO:HB3	1:L:525:TRP:CZ3	2.49	0.46
1:I:236:ARG:NE	1:I:240:GLU:OE2	2.42	0.46
1:L:252:PHE:HE2	1:L:304:TYR:CD1	2.33	0.46
1:D:132:VAL:HG11	1:D:144:ILE:HD13	1.97	0.46
1:E:159:ASP:O	1:E:163:GLU:HB3	2.14	0.46
1:G:96:PRO:HG3	1:G:304:TYR:CE2	2.50	0.46
1:L:567:GLN:HG2	8:L:1139:HOH:O	2.14	0.46
1:B:162:MET:HE1	1:B:175:PHE:CE2	2.49	0.46
1:D:378:PHE:CZ	1:F:441:PRO:HD2	2.50	0.46
1:F:372:VAL:O	1:F:483:ASP:HA	2.15	0.46
1:L:442:GLY:N	1:L:455:VAL:O	2.44	0.46
1:A:173:LYS:NZ	8:A:1232:HOH:O	2.46	0.46
1:B:210:LEU:HD23	1:B:210:LEU:O	2.16	0.46
1:B:214:LEU:HD11	1:B:222:LEU:HD22	1.98	0.46
1:C:148:VAL:HG21	1:C:157:LEU:HD12	1.98	0.46
1:E:100:PRO:O	1:E:251:ARG:HD2	2.15	0.46
1:H:517:SER:HA	1:H:595:LEU:HD13	1.97	0.46
1:I:330:VAL:O	1:I:334:GLU:HG3	2.15	0.46
1:K:252:PHE:HE2	1:K:304:TYR:CD1	2.33	0.46
1:L:328:LEU:HD12	1:L:328:LEU:N	2.30	0.46
1:L:530:ILE:HD12	1:L:533:TYR:CE1	2.50	0.46

Continued on next page...

Continued from previous page...

Atom-1	Atom-2	Interatomic distance (Å)	Clash overlap (Å)
1:E:214:LEU:HD11	1:E:222:LEU:HD22	1.98	0.46
1:G:369:ILE:HB	1:G:423:ILE:CD1	2.46	0.46
1:J:463:ARG:HB2	1:J:561:PHE:HD1	1.80	0.46
1:B:282:GLU:OE2	1:B:285:ARG:HD2	2.16	0.46
1:B:317:LEU:O	1:B:321:LEU:HD13	2.16	0.46
1:H:488:THR:HG21	1:H:555:SER:HA	1.97	0.46
1:B:330:VAL:O	1:B:334:GLU:HG3	2.16	0.46
1:D:441:PRO:HB2	1:E:394:ASP:HA	1.96	0.46
1:G:452:THR:HG23	1:H:254:SER:HB2	1.97	0.46
1:H:339:GLY:HA3	1:H:446:THR:O	2.16	0.46
1:I:375:GLY:O	1:I:429:VAL:HA	2.16	0.46
1:C:321:LEU:HD11	1:C:411:TYR:HA	1.97	0.46
1:D:207:VAL:O	1:D:211:VAL:HG23	2.16	0.46
1:F:536:THR:HG21	1:F:551:VAL:HG23	1.97	0.46
1:G:132:VAL:HG21	1:G:142:VAL:HG13	1.97	0.46
1:L:360:LYS:CE	1:L:422:GLU:HG3	2.46	0.46
1:A:499:TYR:CD1	1:A:523:PRO:HB2	2.51	0.46
1:C:498:SER:O	1:C:523:PRO:HG2	2.16	0.46
1:D:544:ILE:HD12	1:D:564:GLU:HG3	1.97	0.46
1:K:338:MET:HE2	1:K:468:ASP:HB3	1.96	0.46
1:F:129:ILE:HD11	1:F:213:MET:CE	2.42	0.46
1:H:100:PRO:O	1:H:251:ARG:HD2	2.16	0.46
1:I:258:ASN:HB3	1:I:261:MET:CB	2.45	0.46
1:J:248:THR:HG23	1:J:263:TYR:OH	2.16	0.46
1:C:298:ILE:HG23	1:C:398:PHE:HA	1.97	0.45
1:E:200:GLU:O	1:E:204:LYS:HG3	2.16	0.45
1:D:255:THR:HB	1:F:543:ASP:OD2	2.16	0.45
1:H:331:LYS:O	1:H:335:GLU:HG3	2.16	0.45
1:J:374:LYS:HB3	8:J:1215:HOH:O	2.16	0.45
1:L:115:TYR:HD1	1:L:270:TYR:CZ	2.34	0.45
1:L:96:PRO:HG2	1:L:303:ASN:O	2.15	0.45
1:C:135:PRO:HA	1:C:194:SER:O	2.17	0.45
1:A:528:PRO:HD3	1:F:525:TRP:CE2	2.51	0.45
1:F:546:GLN:HG2	1:F:547:ILE:HG23	1.98	0.45
1:H:283:LYS:HE2	1:H:287:TYR:CZ	2.52	0.45
1:K:421:VAL:HG21	1:K:423:ILE:HD11	1.98	0.45
1:L:236:ARG:O	1:L:240:GLU:HG3	2.15	0.45
1:A:315:VAL:O	1:A:319:GLN:HG3	2.16	0.45
1:A:411:TYR:HE1	6:A:1008:1PE:H252	1.81	0.45
1:B:442:GLY:N	1:B:455:VAL:O	2.44	0.45
1:B:444:ILE:HG13	1:C:301:PRO:CG	2.45	0.45

Continued on next page...

Continued from previous page...

Atom-1	Atom-2	Interatomic distance (Å)	Clash overlap (Å)
1:F:236:ARG:O	1:F:240:GLU:HG3	2.16	0.45
1:K:170:GLY:O	1:K:209:SER:OG	2.27	0.45
1:B:423:ILE:HD11	1:B:600:VAL:HG11	1.97	0.45
1:E:463:ARG:HG3	1:E:561:PHE:CE1	2.52	0.45
1:B:333:LEU:HD22	1:B:338:MET:CE	2.47	0.45
6:E:1006:1PE:H151	6:E:1006:1PE:H141	1.33	0.45
1:H:386:LYS:HE3	1:H:396:MET:HG3	1.97	0.45
1:K:340:ALA:HA	1:K:445:ILE:HD12	1.98	0.45
1:L:546:GLN:HG2	1:L:547:ILE:HG23	1.98	0.45
1:B:301:PRO:HB2	1:B:303:ASN:OD1	2.17	0.45
1:C:117:ILE:C	1:C:119:GLY:H	2.20	0.45
1:C:271:ILE:HG12	1:C:272:ASN:N	2.32	0.45
1:G:115:TYR:HB2	1:G:270:TYR:CD2	2.52	0.45
1:G:539:SER:HA	8:G:1180:HOH:O	2.16	0.45
1:K:330:VAL:O	1:K:334:GLU:HG3	2.17	0.45
1:A:586:ARG:NH2	8:A:1169:HOH:O	2.49	0.45
1:D:530:ILE:HD12	1:D:533:TYR:CE1	2.52	0.45
1:E:165:PHE:CD2	1:E:173:LYS:HG3	2.52	0.45
1:E:214:LEU:HD21	1:E:222:LEU:HD22	1.99	0.45
1:H:123:VAL:HG12	1:H:124:GLU:N	2.32	0.45
1:H:328:LEU:HD12	1:H:328:LEU:N	2.31	0.45
1:H:346:LYS:CG	1:I:91:VAL:HG11	2.47	0.45
1:H:357:LEU:HB2	1:H:425:PHE:HB2	1.99	0.45
1:I:178:PHE:HA	1:I:183:ASN:O	2.16	0.45
1:A:138:GLU:HA	1:A:194:SER:HB3	1.99	0.45
1:B:508:GLU:O	1:B:512:LYS:HG3	2.17	0.45
1:E:176:TYR:CE2	1:E:186:ALA:HB2	2.52	0.45
1:E:369:ILE:HB	1:E:423:ILE:CD1	2.46	0.45
1:F:329:GLY:O	1:F:333:LEU:HG	2.17	0.45
1:G:367:LYS:HB2	1:G:367:LYS:HE3	1.68	0.45
1:H:132:VAL:HG21	1:H:142:VAL:HG13	1.99	0.45
1:A:328:LEU:HB2	1:A:354:PHE:HB3	1.99	0.45
1:E:499:TYR:CE2	1:E:523:PRO:HB3	2.52	0.45
1:H:441:PRO:HB2	1:I:394:ASP:HA	1.99	0.45
1:K:132:VAL:HG21	1:K:144:ILE:HD13	1.99	0.45
1:K:116:ASP:HA	1:K:271:ILE:O	2.17	0.45
1:B:181:ASN:O	1:B:181:ASN:ND2	2.48	0.45
1:B:357:LEU:HB2	1:B:425:PHE:HB2	1.99	0.45
1:B:481:ILE:O	1:B:571:TRP:HA	2.17	0.45
1:F:472:TYR:O	1:F:476:LEU:HD13	2.17	0.45
1:H:507:GLU:N	1:H:507:GLU:OE1	2.38	0.45

Continued on next page...

Continued from previous page...

Atom-1	Atom-2	Interatomic distance (Å)	Clash overlap (Å)
1:J:214:LEU:HD21	1:J:222:LEU:HD22	1.99	0.45
1:J:360:LYS:CD	1:J:365:VAL:HG21	2.47	0.45
1:K:355:ILE:HG22	1:K:357:LEU:HD13	1.99	0.45
1:L:235:PHE:O	1:L:239:LEU:HD13	2.16	0.45
1:C:546:GLN:HG2	1:C:547:ILE:HG23	1.99	0.44
1:D:463:ARG:HG3	1:D:561:PHE:CE1	2.52	0.44
1:I:306:ASN:C	1:I:377:THR:HG21	2.37	0.44
1:C:168:LYS:O	1:C:171:THR:HB	2.17	0.44
1:C:236:ARG:O	1:C:240:GLU:HG3	2.17	0.44
1:D:423:ILE:HD11	1:D:600:VAL:HG13	1.99	0.44
1:F:236:ARG:CD	1:F:283:LYS:HD3	2.47	0.44
1:F:121:CYS:HA	1:F:270:TYR:CE2	2.52	0.44
1:H:263:TYR:N	8:H:1187:HOH:O	2.51	0.44
1:J:444:ILE:HA	1:J:453:ILE:O	2.17	0.44
1:K:341:TYR:CE1	1:K:428:ALA:HB1	2.53	0.44
1:K:374:LYS:CG	1:K:376:ILE:HD13	2.47	0.44
1:L:244:TYR:OH	1:L:588:PRO:O	2.34	0.44
1:A:117:ILE:C	1:A:119:GLY:H	2.21	0.44
1:A:367:LYS:HA	1:A:479:ASP:OD2	2.17	0.44
1:C:320:LYS:HB3	6:C:1008:1PE:H151	2.00	0.44
1:F:138:GLU:HA	1:F:194:SER:OG	2.17	0.44
1:G:134:ASN:ND2	1:G:141:PRO:HD2	2.32	0.44
1:I:353:LYS:NZ	8:I:1154:HOH:O	2.49	0.44
1:I:341:TYR:CD1	1:I:428:ALA:HB1	2.52	0.44
1:A:165:PHE:HB3	1:A:189:TYR:OH	2.18	0.44
1:A:481:ILE:O	1:A:571:TRP:HA	2.17	0.44
1:B:328:LEU:N	1:B:328:LEU:HD12	2.33	0.44
1:C:531:ASN:N	6:C:1010:1PE:H132	2.29	0.44
1:D:488:THR:HA	5:D:1004:R5T:H10	1.83	0.44
1:D:88:VAL:HG22	1:D:308:VAL:CG1	2.48	0.44
1:D:367:LYS:HA	1:D:479:ASP:OD2	2.18	0.44
1:F:463:ARG:HG3	1:F:561:PHE:CE1	2.52	0.44
1:G:483:ASP:OD1	1:G:573:HIS:ND1	2.36	0.44
1:I:355:ILE:CG2	1:I:357:LEU:HD13	2.48	0.44
1:B:236:ARG:O	1:B:240:GLU:HG3	2.17	0.44
1:H:173:LYS:HB2	1:H:189:TYR:CE1	2.53	0.44
1:K:346:LYS:HB3	1:K:437:ASN:O	2.18	0.44
1:A:514:LEU:O	1:A:517:SER:HB3	2.17	0.44
1:D:165:PHE:CE2	1:D:173:LYS:HG3	2.52	0.44
1:B:175:PHE:HD1	1:F:176:TYR:HB2	1.83	0.44
1:G:341:TYR:CD1	1:G:428:ALA:HB1	2.53	0.44

Continued on next page...

Continued from previous page...

Atom-1	Atom-2	Interatomic distance (Å)	Clash overlap (Å)
1:I:232:LYS:NZ	8:I:1245:HOH:O	2.47	0.44
1:A:271:ILE:HG12	1:A:272:ASN:N	2.33	0.44
1:A:506:ASN:O	1:A:510:ILE:HG13	2.17	0.44
1:A:525:TRP:CZ3	1:F:528:PRO:HB3	2.53	0.44
1:B:116:ASP:OD2	1:B:118:LYS:HB2	2.18	0.44
1:E:161:ASN:HA	1:E:164:LYS:HE2	1.99	0.44
1:G:116:ASP:HA	1:G:271:ILE:O	2.18	0.44
1:G:545:ASN:HD21	1:H:586:ARG:HH22	1.64	0.44
1:H:221:LYS:HG3	1:H:266:HIS:CB	2.43	0.44
1:H:321:LEU:HB3	1:H:323:LEU:HD11	1.99	0.44
1:J:96:PRO:HG3	1:J:304:TYR:CD2	2.52	0.44
1:K:328:LEU:HD12	1:K:328:LEU:N	2.33	0.44
1:E:586:ARG:NH1	8:E:1197:HOH:O	2.34	0.44
1:H:174:HIS:HB3	1:L:175:PHE:CD1	2.53	0.44
1:G:444:ILE:HG13	1:H:301:PRO:CG	2.48	0.44
1:I:123:VAL:O	1:I:124:GLU:HG2	2.17	0.44
1:I:381:GLY:HA2	1:I:459:ASP:OD1	2.17	0.44
1:K:134:ASN:ND2	1:K:141:PRO:HD2	2.33	0.44
1:L:96:PRO:HG3	1:L:304:TYR:CD2	2.53	0.44
1:B:323:LEU:HD22	1:B:359:TYR:HB2	2.00	0.43
1:G:421:VAL:HG21	1:G:423:ILE:HD11	2.00	0.43
1:H:321:LEU:CB	1:H:323:LEU:HD11	2.48	0.43
1:I:221:LYS:HG3	1:I:266:HIS:HB2	2.00	0.43
1:K:502:VAL:CG1	1:K:526:TRP:HA	2.48	0.43
1:A:463:ARG:HB2	1:A:561:PHE:HD1	1.82	0.43
1:E:198:LEU:HD12	1:E:228:ILE:HD12	2.00	0.43
1:F:302:SER:OG	1:F:378:PHE:HB2	2.17	0.43
1:G:173:LYS:HB2	1:G:189:TYR:CE1	2.52	0.43
1:J:441:PRO:HD2	1:K:378:PHE:CZ	2.52	0.43
1:B:172:SER:HA	1:B:189:TYR:O	2.18	0.43
1:C:221:LYS:CG	1:C:266:HIS:HB2	2.44	0.43
1:E:369:ILE:HB	1:E:423:ILE:HD12	1.99	0.43
1:G:546:GLN:HG2	1:G:547:ILE:HG23	1.99	0.43
1:H:321:LEU:CB	1:H:323:LEU:CD1	2.96	0.43
1:L:116:ASP:HA	1:L:271:ILE:O	2.18	0.43
1:F:138:GLU:N	1:F:140:GLY:N	2.64	0.43
1:F:317:LEU:HG	1:F:321:LEU:HD12	2.00	0.43
1:A:463:ARG:HG3	1:A:561:PHE:CE1	2.53	0.43
1:A:91:VAL:HB	1:C:346:LYS:HE3	2.00	0.43
1:B:172:SER:HB2	1:B:213:MET:HE3	2.00	0.43
1:F:367:LYS:HA	1:F:479:ASP:OD2	2.18	0.43

Continued on next page...

Continued from previous page...

Atom-1	Atom-2	Interatomic distance (Å)	Clash overlap (Å)
1:G:287:TYR:CE1	1:G:597:THR:HG21	2.53	0.43
1:D:132:VAL:HG21	1:D:142:VAL:HG13	1.99	0.43
1:G:235:PHE:O	1:G:238:PHE:HB3	2.19	0.43
1:H:125:GLU:HG2	1:H:126:GLY:N	2.33	0.43
1:I:172:SER:HB2	1:I:213:MET:HE1	1.99	0.43
1:I:579:VAL:O	1:I:589:LYS:HD2	2.18	0.43
1:J:210:LEU:HD12	1:J:213:MET:CE	2.48	0.43
1:H:528:PRO:HD3	1:K:525:TRP:CE2	2.53	0.43
1:K:502:VAL:HG13	1:K:526:TRP:HA	2.00	0.43
1:E:152:GLN:HG2	1:E:180:ASP:OD2	2.19	0.43
1:G:481:ILE:O	1:G:571:TRP:HA	2.18	0.43
1:H:397:LYS:N	8:H:1189:HOH:O	2.51	0.43
1:H:506:ASN:O	1:H:510:ILE:HG13	2.19	0.43
1:I:116:ASP:OD2	1:I:118:LYS:HB3	2.19	0.43
1:H:346:LYS:HG3	1:I:91:VAL:CG1	2.48	0.43
1:L:301:PRO:HB2	1:L:303:ASN:OD1	2.18	0.43
1:E:381:GLY:HA2	1:E:459:ASP:OD1	2.18	0.43
1:E:444:ILE:HA	1:E:453:ILE:O	2.19	0.43
1:G:123:VAL:C	1:G:124:GLU:HG3	2.39	0.43
1:H:498:SER:O	1:H:523:PRO:HG2	2.19	0.43
1:I:106:PRO:HD2	1:I:247:MET:SD	2.59	0.43
1:K:481:ILE:O	1:K:571:TRP:HA	2.19	0.43
1:A:368:LYS:NZ	8:A:1256:HOH:O	2.40	0.43
1:A:514:LEU:O	1:A:518:LYS:HG3	2.19	0.43
1:B:127:LEU:HD22	1:B:219:LEU:HD11	2.01	0.43
1:C:169:LEU:HD22	1:C:170:GLY:N	2.33	0.43
1:L:310:LEU:C	1:L:310:LEU:HD23	2.39	0.43
1:B:107:ILE:N	1:B:107:ILE:CD1	2.82	0.43
1:B:463:ARG:HG3	1:B:561:PHE:CE1	2.54	0.43
1:C:169:LEU:HD13	1:C:205:ARG:CD	2.49	0.43
1:C:209:SER:O	1:C:212:THR:OG1	2.33	0.43
1:D:573:HIS:NE2	8:D:1145:HOH:O	2.37	0.43
1:E:316:GLU:CD	6:E:1006:1PE:H252	2.39	0.43
1:E:346:LYS:HB3	1:E:437:ASN:O	2.19	0.43
1:F:328:LEU:HD21	1:F:472:TYR:HE1	1.83	0.43
1:G:91:VAL:HB	1:I:346:LYS:HE3	2.01	0.43
1:H:112:VAL:HG22	1:H:267:LEU:HB3	2.01	0.43
1:H:209:SER:O	1:H:212:THR:OG1	2.33	0.43
1:H:544:ILE:HD12	1:H:564:GLU:HG3	2.00	0.43
1:J:381:GLY:HA2	1:J:459:ASP:OD1	2.18	0.43
1:A:537:LEU:HA	1:A:545:ASN:HB2	2.00	0.42

Continued on next page...

Continued from previous page...

Atom-1	Atom-2	Interatomic distance (Å)	Clash overlap (Å)
1:D:144:ILE:HG21	1:D:157:LEU:HD13	2.01	0.42
1:F:497:THR:C	1:F:579:VAL:HG12	2.39	0.42
1:H:236:ARG:O	1:H:240:GLU:HG3	2.19	0.42
1:I:294:ALA:O	1:I:298:ILE:HG13	2.18	0.42
1:J:217:ASN:HB3	1:J:219:LEU:HD21	2.00	0.42
1:K:380:SER:O	1:K:385:LEU:HD12	2.19	0.42
1:L:210:LEU:HA	1:L:213:MET:CE	2.49	0.42
1:L:130:PHE:HA	1:L:225:VAL:HG13	2.00	0.42
1:A:592:GLY:O	1:A:596:LEU:HG	2.19	0.42
1:B:178:PHE:HA	1:B:183:ASN:O	2.19	0.42
1:B:210:LEU:HD21	1:B:222:LEU:HD21	2.00	0.42
1:D:127:LEU:HD13	1:D:186:ALA:HB1	2.00	0.42
1:E:326:LYS:CD	1:E:328:LEU:HD21	2.50	0.42
1:G:202:ASP:OD1	8:G:1149:HOH:O	2.22	0.42
1:G:554:SER:HB3	5:G:1006:R5T:H4	2.01	0.42
1:H:540:LYS:NZ	1:I:587:LYS:HD3	2.34	0.42
1:I:372:VAL:O	1:I:483:ASP:HA	2.19	0.42
1:B:536:THR:HG21	1:B:551:VAL:CG2	2.48	0.42
1:D:423:ILE:CD1	1:D:600:VAL:HG11	2.49	0.42
1:F:386:LYS:NZ	5:F:1005:R5T:O	2.33	0.42
1:G:254:SER:HB2	1:I:452:THR:HG23	2.01	0.42
1:K:463:ARG:HG3	1:K:561:PHE:CE1	2.54	0.42
1:K:96:PRO:HG2	1:K:304:TYR:CE2	2.54	0.42
1:L:127:LEU:HB2	1:L:219:LEU:HD21	2.00	0.42
1:H:174:HIS:HB3	1:L:175:PHE:CE1	2.55	0.42
1:A:600:VAL:HG23	1:A:601:LEU:CD1	2.48	0.42
1:E:440:ARG:HD2	1:F:302:SER:HB2	2.01	0.42
1:F:451:LYS:NZ	8:F:1178:HOH:O	2.38	0.42
1:K:369:ILE:HB	1:K:423:ILE:CD1	2.48	0.42
1:C:221:LYS:HG3	1:C:266:HIS:CB	2.42	0.42
1:D:546:GLN:HG2	1:D:547:ILE:HG23	2.02	0.42
1:E:236:ARG:O	1:E:240:GLU:HG3	2.19	0.42
1:E:546:GLN:HG2	1:E:547:ILE:HG23	2.01	0.42
1:F:235:PHE:CE2	1:F:239:LEU:HD21	2.54	0.42
1:F:333:LEU:HD13	1:F:341:TYR:CE2	2.55	0.42
1:E:441:PRO:HB2	1:F:394:ASP:HA	2.01	0.42
1:G:380:SER:O	1:G:385:LEU:HD12	2.19	0.42
1:H:244:TYR:OH	1:H:588:PRO:O	2.35	0.42
1:I:207:VAL:HG11	1:I:241:THR:HG22	2.02	0.42
1:I:321:LEU:O	1:I:322:ASN:CB	2.67	0.42
1:L:361:SER:OG	1:L:420:ASN:N	2.52	0.42

Continued on next page...

Continued from previous page...

Atom-1	Atom-2	Interatomic distance (Å)	Clash overlap (Å)
1:B:306:ASN:C	1:B:377:THR:HG21	2.40	0.42
1:B:355:ILE:HG22	1:B:357:LEU:HD13	2.01	0.42
1:D:321:LEU:HD11	1:D:411:TYR:HA	2.01	0.42
1:F:235:PHE:O	1:F:238:PHE:HB3	2.19	0.42
1:H:546:GLN:HG2	1:H:547:ILE:HG23	2.01	0.42
1:J:272:ASN:O	1:J:273:ASN:HB2	2.19	0.42
1:K:321:LEU:HD11	1:K:411:TYR:HA	2.02	0.42
1:L:287:TYR:CE1	1:L:597:THR:HG21	2.54	0.42
1:C:120:GLY:HA2	1:C:147:LYS:O	2.19	0.42
1:C:153:VAL:O	1:C:157:LEU:HG	2.20	0.42
1:C:320:LYS:HE2	6:C:1008:1PE:C12	2.49	0.42
1:K:332:GLU:N	1:K:332:GLU:OE1	2.48	0.42
1:K:410:ALA:HA	1:K:425:PHE:CZ	2.55	0.42
1:L:357:LEU:HB2	1:L:425:PHE:HB2	2.01	0.42
1:A:357:LEU:HB2	1:A:425:PHE:HB2	2.02	0.42
1:C:410:ALA:HA	1:C:425:PHE:CZ	2.55	0.42
1:D:127:LEU:HD13	1:D:186:ALA:CB	2.50	0.42
1:D:497:THR:HA	1:D:578:GLY:O	2.20	0.42
1:F:328:LEU:HD12	1:F:328:LEU:N	2.35	0.42
1:D:214:LEU:HD21	1:D:222:LEU:HD22	2.01	0.42
1:L:130:PHE:CD2	1:L:225:VAL:HG11	2.55	0.42
1:B:152:GLN:CD	1:B:152:GLN:H	2.23	0.42
1:B:252:PHE:CZ	1:B:301:PRO:HD2	2.55	0.42
1:C:134:ASN:ND2	1:C:141:PRO:HD2	2.34	0.42
1:E:134:ASN:ND2	1:E:141:PRO:HD2	2.35	0.42
1:F:124:GLU:HA	1:F:179:ASN:ND2	2.34	0.42
1:F:498:SER:O	1:F:523:PRO:HG2	2.20	0.42
8:A:1217:HOH:O	1:F:555:SER:HB2	2.18	0.42
1:G:338:MET:CE	1:G:472:TYR:HD1	2.33	0.42
1:B:334:GLU:O	1:B:337:LYS:HD3	2.20	0.41
1:D:510:ILE:HD13	1:D:526:TRP:NE1	2.35	0.41
1:C:528:PRO:HB3	1:D:525:TRP:CZ3	2.55	0.41
1:H:221:LYS:CG	1:H:266:HIS:HB2	2.45	0.41
1:H:372:VAL:O	1:H:483:ASP:HA	2.20	0.41
1:H:463:ARG:HG3	1:H:561:PHE:CE1	2.54	0.41
1:I:236:ARG:O	1:I:240:GLU:HG3	2.19	0.41
1:L:498:SER:O	1:L:523:PRO:HG2	2.20	0.41
1:A:397:LYS:HB3	8:C:1117:HOH:O	2.19	0.41
1:B:202:ASP:O	1:B:206:VAL:HG23	2.20	0.41
1:B:522:GLU:HA	1:B:523:PRO:HD2	1.93	0.41
1:C:383:TYR:HE2	1:C:438:SER:HB2	1.85	0.41

Continued on next page...

Continued from previous page...

Atom-1	Atom-2	Interatomic distance (Å)	Clash overlap (Å)
1:D:123:VAL:C	1:D:124:GLU:HG3	2.40	0.41
1:E:463:ARG:HB2	1:E:561:PHE:HD1	1.85	0.41
1:F:310:LEU:HD22	1:F:310:LEU:O	2.19	0.41
1:F:522:GLU:HA	1:F:523:PRO:HD2	1.93	0.41
1:G:321:LEU:HD11	1:G:411:TYR:HA	2.01	0.41
1:K:375:GLY:O	1:K:429:VAL:HA	2.20	0.41
1:K:95:ASP:HA	1:K:96:PRO:HD3	1.90	0.41
1:A:123:VAL:C	1:A:124:GLU:HG3	2.41	0.41
1:B:252:PHE:HE2	1:B:304:TYR:CD1	2.37	0.41
6:C:1010:1PE:H142	1:D:201:ALA:CB	2.37	0.41
1:C:223:THR:HA	1:C:268:GLY:O	2.20	0.41
1:F:444:ILE:HA	1:F:453:ILE:O	2.20	0.41
1:H:235:PHE:O	1:H:238:PHE:HB3	2.21	0.41
1:H:522:GLU:HA	1:H:523:PRO:HD2	1.94	0.41
1:J:178:PHE:HA	1:J:183:ASN:O	2.20	0.41
1:J:341:TYR:OH	1:J:429:VAL:O	2.22	0.41
1:J:544:ILE:CD1	1:J:564:GLU:HG3	2.49	0.41
1:K:374:LYS:HB2	1:K:485:ALA:CB	2.51	0.41
1:A:333:LEU:HD13	1:A:341:TYR:CE2	2.56	0.41
1:A:517:SER:HA	1:A:595:LEU:HD13	2.03	0.41
1:B:140:GLY:O	1:B:166:ASN:HA	2.21	0.41
1:D:252:PHE:HE2	1:D:304:TYR:CD1	2.38	0.41
1:F:271:ILE:HG12	1:F:272:ASN:N	2.34	0.41
1:G:463:ARG:HG3	1:G:561:PHE:CE1	2.55	0.41
1:H:124:GLU:HA	1:H:185:VAL:HG12	2.00	0.41
4:H:1004:SO4:O3	1:I:436:LYS:HG2	2.19	0.41
1:J:481:ILE:O	1:J:571:TRP:HA	2.21	0.41
1:K:221:LYS:HG3	1:K:266:HIS:HB2	2.01	0.41
1:L:102:GLU:HG2	1:L:105:THR:HG22	2.02	0.41
1:A:487:LEU:HG	3:A:1002:CO3:O3	2.21	0.41
1:A:123:VAL:O	1:A:124:GLU:HG3	2.20	0.41
1:B:134:ASN:HB3	1:B:167:VAL:HG21	2.03	0.41
1:C:355:ILE:HG22	1:C:357:LEU:HD13	2.01	0.41
1:D:217:ASN:CB	1:D:219:LEU:HD11	2.51	0.41
1:D:321:LEU:O	1:D:322:ASN:CB	2.69	0.41
1:E:134:ASN:HA	1:E:135:PRO:HD2	1.90	0.41
1:E:106:PRO:HD2	1:E:247:MET:SD	2.60	0.41
1:F:287:TYR:CE1	1:F:597:THR:HG21	2.55	0.41
1:J:301:PRO:CG	1:L:444:ILE:HG13	2.51	0.41
1:A:235:PHE:O	1:A:238:PHE:HB3	2.21	0.41
1:A:536:THR:CG2	1:A:548:SER:HB2	2.51	0.41

Continued on next page...

Continued from previous page...

Atom-1	Atom-2	Interatomic distance (Å)	Clash overlap (Å)
1:D:255:THR:HG22	8:D:1202:HOH:O	2.19	0.41
1:D:85:ALA:HA	1:D:312:ASN:OD1	2.21	0.41
1:G:294:ALA:O	1:G:298:ILE:HG13	2.20	0.41
1:H:463:ARG:HB2	1:H:561:PHE:HD1	1.85	0.41
1:K:236:ARG:NE	1:K:240:GLU:OE2	2.49	0.41
1:B:135:PRO:HA	1:B:194:SER:O	2.20	0.41
1:C:325:TYR:C	1:C:325:TYR:CD1	2.94	0.41
1:C:306:ASN:C	1:C:377:THR:HG21	2.41	0.41
1:D:127:LEU:HD12	1:D:186:ALA:O	2.21	0.41
1:G:89:PRO:HD3	8:G:1146:HOH:O	2.21	0.41
1:H:252:PHE:HE1	1:H:304:TYR:CD1	2.39	0.41
1:I:123:VAL:HG12	1:I:185:VAL:HG11	2.02	0.41
1:I:209:SER:O	1:I:212:THR:OG1	2.33	0.41
1:A:236:ARG:NH2	1:A:519:THR:O	2.50	0.41
1:B:251:ARG:HD3	1:B:296:GLN:OE1	2.20	0.41
1:C:500:ALA:HB3	1:C:524:VAL:HG22	2.03	0.41
1:C:517:SER:HA	1:C:595:LEU:HD13	2.02	0.41
1:D:150:ASP:O	1:D:154:SER:HB2	2.21	0.41
1:D:381:GLY:HA2	1:D:459:ASP:OD1	2.21	0.41
1:G:178:PHE:HA	1:G:183:ASN:O	2.21	0.41
1:I:165:PHE:HZ	1:K:176:TYR:CD2	2.38	0.41
1:I:344:VAL:HG13	1:I:461:GLU:HB2	2.02	0.41
1:C:88:VAL:HA	1:C:89:PRO:HD3	1.93	0.41
1:D:283:LYS:HE2	1:D:287:TYR:CZ	2.56	0.41
1:E:300:ALA:HA	1:E:301:PRO:HD3	1.88	0.41
1:F:544:ILE:HD12	1:F:564:GLU:HG3	2.02	0.41
1:H:326:LYS:HE2	1:H:356:HIS:ND1	2.35	0.41
1:I:103:TYR:HD1	6:I:1005:1PE:H241	1.85	0.41
1:J:374:LYS:HB2	1:J:485:ALA:HB2	2.02	0.41
1:J:453:ILE:HD11	1:J:565:PHE:HZ	1.85	0.41
1:A:173:LYS:HB2	1:A:189:TYR:CE1	2.55	0.41
1:A:355:ILE:HG22	1:A:357:LEU:HD13	2.03	0.41
1:B:210:LEU:HD23	1:B:210:LEU:C	2.40	0.41
1:E:463:ARG:NH1	1:E:547:ILE:HG22	2.36	0.41
1:B:175:PHE:CD1	1:F:176:TYR:HB2	2.56	0.41
1:F:374:LYS:HB2	1:F:485:ALA:CB	2.51	0.41
1:G:172:SER:HB2	1:G:213:MET:HE1	2.00	0.41
1:H:150:ASP:OD2	1:H:153:VAL:HG23	2.21	0.41
1:I:366:LYS:CE	1:I:420:ASN:HB3	2.35	0.41
1:A:127:LEU:HD21	1:A:213:MET:HE2	2.03	0.41
1:B:130:PHE:CD2	1:B:225:VAL:HB	2.55	0.41

Continued on next page...

Continued from previous page...

Atom-1	Atom-2	Interatomic distance (Å)	Clash overlap (Å)
1:B:341:TYR:CD1	1:B:428:ALA:HB1	2.56	0.41
1:C:369:ILE:HB	1:C:423:ILE:HD13	2.02	0.41
1:D:116:ASP:HA	1:D:271:ILE:O	2.21	0.41
1:D:444:ILE:HA	1:D:453:ILE:O	2.21	0.41
1:D:451:LYS:HE3	1:D:564:GLU:O	2.21	0.41
1:D:521:ASN:ND2	8:D:1140:HOH:O	2.26	0.41
1:D:543:ASP:CG	1:E:255:THR:H	2.23	0.41
1:J:242:LEU:O	1:J:246:TYR:HB2	2.20	0.41
1:J:442:GLY:N	1:J:455:VAL:O	2.45	0.41
1:B:123:VAL:HG12	1:B:124:GLU:N	2.36	0.40
1:D:262:GLU:HA	1:D:262:GLU:OE1	2.21	0.40
1:E:169:LEU:C	1:E:169:LEU:HD13	2.42	0.40
1:F:321:LEU:O	1:F:322:ASN:HB3	2.21	0.40
1:G:282:GLU:O	1:G:286:VAL:HG23	2.21	0.40
1:H:271:ILE:HG12	1:H:272:ASN:N	2.36	0.40
1:I:169:LEU:HD11	1:I:205:ARG:CD	2.51	0.40
1:I:235:PHE:O	1:I:238:PHE:HB3	2.21	0.40
1:J:579:VAL:O	1:J:589:LYS:HD2	2.21	0.40
1:K:165:PHE:CD2	1:K:173:LYS:HG3	2.56	0.40
1:K:210:LEU:HD23	1:K:242:LEU:HD13	2.03	0.40
1:K:355:ILE:CG2	1:K:357:LEU:HD13	2.50	0.40
1:L:88:VAL:HG22	1:L:308:VAL:HG12	2.02	0.40
1:B:307:PRO:N	1:B:377:THR:HG21	2.36	0.40
6:C:1010:1PE:H141	1:D:200:GLU:OE1	2.21	0.40
1:C:342:LEU:O	1:C:346:LYS:HG3	2.21	0.40
1:D:502:VAL:HG12	1:D:525:TRP:O	2.20	0.40
1:E:148:VAL:HG21	1:E:157:LEU:HD12	2.03	0.40
1:H:325:TYR:CD1	1:H:325:TYR:C	2.95	0.40
1:I:96:PRO:HG3	1:I:304:TYR:CD2	2.56	0.40
1:H:346:LYS:HD2	1:I:91:VAL:HB	2.04	0.40
1:L:341:TYR:CE1	1:L:428:ALA:HB1	2.56	0.40
1:B:347:GLY:HA3	1:B:438:SER:OG	2.21	0.40
1:C:96:PRO:HG3	1:C:304:TYR:CD2	2.55	0.40
1:D:306:ASN:C	1:D:377:THR:HG21	2.42	0.40
1:C:530:ILE:HD13	1:D:499:TYR:CD2	2.56	0.40
1:E:350:TYR:HA	1:E:351:PRO:HD3	1.84	0.40
1:I:480:TYR:OH	1:I:512:LYS:NZ	2.49	0.40
1:J:451:LYS:HE3	1:J:564:GLU:O	2.21	0.40
1:K:236:ARG:O	1:K:240:GLU:HG3	2.22	0.40
1:L:101:ILE:HG21	1:L:103:TYR:CZ	2.56	0.40
1:B:185:VAL:HA	8:B:1173:HOH:O	2.21	0.40

Continued on next page...

Continued from previous page...

Atom-1	Atom-2	Interatomic distance (Å)	Clash overlap (Å)
1:B:114:VAL:HG12	1:B:274:ALA:HB1	2.04	0.40
1:C:329:GLY:O	1:C:333:LEU:HG	2.21	0.40
1:C:341:TYR:CD1	1:C:428:ALA:HB1	2.55	0.40
1:C:374:LYS:HB2	1:C:485:ALA:CB	2.52	0.40
1:D:217:ASN:CB	1:D:219:LEU:CD1	3.00	0.40
1:D:293:TYR:CE2	1:D:317:LEU:HD22	2.57	0.40
1:H:307:PRO:HA	1:H:429:VAL:CG1	2.51	0.40
1:I:329:GLY:O	1:I:333:LEU:HG	2.21	0.40
1:I:481:ILE:O	1:I:571:TRP:HA	2.22	0.40
1:J:152:GLN:HG2	1:J:180:ASP:OD1	2.20	0.40
1:J:271:ILE:HG12	1:J:272:ASN:N	2.36	0.40
1:L:142:VAL:HG21	1:L:189:TYR:CZ	2.56	0.40
1:L:379:ASP:HB2	1:L:399:ASP:OD2	2.22	0.40
1:C:326:LYS:HG2	1:C:328:LEU:CD2	2.51	0.40
1:C:530:ILE:HA	6:C:1010:1PE:H231	2.04	0.40
1:D:126:GLY:HA3	1:D:221:LYS:O	2.22	0.40
1:E:271:ILE:HG12	1:E:272:ASN:N	2.37	0.40
1:E:522:GLU:HA	1:E:523:PRO:HD3	1.92	0.40
1:B:493:TYR:CE1	1:E:552:LYS:HB3	2.57	0.40
1:F:600:VAL:HG23	1:F:601:LEU:HD13	2.03	0.40
1:G:525:TRP:CE3	1:L:528:PRO:HB3	2.57	0.40
1:H:330:VAL:O	1:H:334:GLU:HG3	2.21	0.40
1:H:507:GLU:HG2	8:H:1186:HOH:O	2.21	0.40

All (3) symmetry-related close contacts are listed below. The label for Atom-2 includes the symmetry operator and encoded unit-cell translations to be applied.

Atom-1	Atom-2	Interatomic distance (Å)	Clash overlap (Å)
1:I:479:ASP:OD1	1:K:366:LYS:NZ[4_456]	2.18	0.02
1:C:479:ASP:OD1	1:E:366:LYS:NZ[4_455]	2.19	0.01
1:E:124:GLU:OE1	8:G:1223:HOH:O[3_645]	2.19	0.01

5.3 Torsion angles

5.3.1 Protein backbone

In the following table, the Percentiles column shows the percent Ramachandran outliers of the chain as a percentile score with respect to all X-ray entries followed by that with respect to entries of similar resolution.

The Analysed column shows the number of residues for which the backbone conformation was analysed, and the total number of residues.

Mol	Chain	Analysed	Favoured	Allowed	Outliers	Percentiles	
1	A	511/528 (97%)	495 (97%)	12 (2%)	4 (1%)	22	44
1	B	507/528 (96%)	487 (96%)	18 (4%)	2 (0%)	38	63
1	C	516/528 (98%)	500 (97%)	13 (2%)	3 (1%)	28	53
1	D	509/528 (96%)	493 (97%)	13 (3%)	3 (1%)	28	53
1	E	507/528 (96%)	492 (97%)	13 (3%)	2 (0%)	38	63
1	F	500/528 (95%)	483 (97%)	14 (3%)	3 (1%)	28	53
1	G	510/528 (97%)	494 (97%)	13 (2%)	3 (1%)	28	53
1	H	507/528 (96%)	488 (96%)	16 (3%)	3 (1%)	28	53
1	I	512/528 (97%)	497 (97%)	13 (2%)	2 (0%)	38	63
1	J	508/528 (96%)	494 (97%)	12 (2%)	2 (0%)	38	63
1	K	503/528 (95%)	488 (97%)	14 (3%)	1 (0%)	51	76
1	L	501/528 (95%)	488 (97%)	13 (3%)	0	100	100
All	All	6091/6336 (96%)	5899 (97%)	164 (3%)	28 (0%)	32	58

All (28) Ramachandran outliers are listed below:

Mol	Chain	Res	Type
1	A	322	ASN
1	B	124	GLU
1	D	254	SER
1	D	322	ASN
1	E	139	ASN
1	F	139	ASN
1	G	322	ASN
1	H	322	ASN
1	I	322	ASN
1	J	139	ASN
1	K	139	ASN
1	A	139	ASN
1	C	139	ASN
1	C	322	ASN
1	D	139	ASN
1	E	322	ASN
1	F	124	GLU
1	G	139	ASN
1	H	118	LYS

Continued on next page...

Continued from previous page...

Mol	Chain	Res	Type
1	A	118	LYS
1	A	124	GLU
1	C	118	LYS
1	F	322	ASN
1	H	123	VAL
1	I	124	GLU
1	J	124	GLU
1	B	123	VAL
1	G	124	GLU

5.3.2 Protein sidechains ⓘ

In the following table, the Percentiles column shows the percent sidechain outliers of the chain as a percentile score with respect to all X-ray entries followed by that with respect to entries of similar resolution.

The Analysed column shows the number of residues for which the sidechain conformation was analysed, and the total number of residues.

Mol	Chain	Analysed	Rotameric	Outliers	Percentiles	
1	A	421/455 (92%)	417 (99%)	4 (1%)	80	93
1	B	405/455 (89%)	394 (97%)	11 (3%)	50	77
1	C	418/455 (92%)	407 (97%)	11 (3%)	51	78
1	D	414/455 (91%)	405 (98%)	9 (2%)	57	81
1	E	414/455 (91%)	406 (98%)	8 (2%)	62	84
1	F	383/455 (84%)	375 (98%)	8 (2%)	59	83
1	G	421/455 (92%)	418 (99%)	3 (1%)	87	96
1	H	408/455 (90%)	400 (98%)	8 (2%)	60	83
1	I	408/455 (90%)	402 (98%)	6 (2%)	70	88
1	J	413/455 (91%)	405 (98%)	8 (2%)	62	84
1	K	410/455 (90%)	404 (98%)	6 (2%)	70	88
1	L	394/455 (87%)	384 (98%)	10 (2%)	53	79
All	All	4909/5460 (90%)	4817 (98%)	92 (2%)	62	84

All (92) residues with a non-rotameric sidechain are listed below:

Mol	Chain	Res	Type
1	A	200	GLU

Continued on next page...

Continued from previous page...

Mol	Chain	Res	Type
1	A	328	LEU
1	A	398	PHE
1	A	439	TYR
1	B	107	ILE
1	B	117	ILE
1	B	125	GLU
1	B	181	ASN
1	B	200	GLU
1	B	208	LEU
1	B	254	SER
1	B	320	LYS
1	B	398	PHE
1	B	439	TYR
1	B	595	LEU
1	C	169	LEU
1	C	171	THR
1	C	200	GLU
1	C	276	THR
1	C	288	TYR
1	C	322	ASN
1	C	398	PHE
1	C	439	TYR
1	C	472	TYR
1	C	474	GLU
1	C	478	VAL
1	D	154	SER
1	D	200	GLU
1	D	248	THR
1	D	288	TYR
1	D	310	LEU
1	D	325	TYR
1	D	398	PHE
1	D	439	TYR
1	D	472	TYR
1	E	255	THR
1	E	288	TYR
1	E	310	LEU
1	E	325	TYR
1	E	364	ASP
1	E	398	PHE
1	E	439	TYR
1	E	472	TYR

Continued on next page...

Continued from previous page...

Mol	Chain	Res	Type
1	F	159	ASP
1	F	169	LEU
1	F	239	LEU
1	F	398	PHE
1	F	407	LEU
1	F	439	TYR
1	F	472	TYR
1	F	476	LEU
1	G	398	PHE
1	G	439	TYR
1	G	472	TYR
1	H	181	ASN
1	H	210	LEU
1	H	233	ASN
1	H	288	TYR
1	H	364	ASP
1	H	398	PHE
1	H	421	VAL
1	H	439	TYR
1	I	200	GLU
1	I	208	LEU
1	I	223	THR
1	I	398	PHE
1	I	407	LEU
1	I	439	TYR
1	J	200	GLU
1	J	219	LEU
1	J	248	THR
1	J	322	ASN
1	J	325	TYR
1	J	398	PHE
1	J	439	TYR
1	J	472	TYR
1	K	200	GLU
1	K	208	LEU
1	K	239	LEU
1	K	325	TYR
1	K	398	PHE
1	K	439	TYR
1	L	86	SER
1	L	121	CYS
1	L	200	GLU

Continued on next page...

Continued from previous page...

Mol	Chain	Res	Type
1	L	225	VAL
1	L	288	TYR
1	L	364	ASP
1	L	398	PHE
1	L	407	LEU
1	L	439	TYR
1	L	476	LEU

Some sidechains can be flipped to improve hydrogen bonding and reduce clashes. All (2) such sidechains are listed below:

Mol	Chain	Res	Type
1	B	174	HIS
1	L	266	HIS

5.3.3 RNA [i](#)

There are no RNA molecules in this entry.

5.4 Non-standard residues in protein, DNA, RNA chains [i](#)

There are no non-standard protein/DNA/RNA residues in this entry.

5.5 Carbohydrates [i](#)

There are no carbohydrates in this entry.

5.6 Ligand geometry [i](#)

Of 92 ligands modelled in this entry, 24 are monoatomic - leaving 68 for Mogul analysis.

In the following table, the Counts columns list the number of bonds (or angles) for which Mogul statistics could be retrieved, the number of bonds (or angles) that are observed in the model and the number of bonds (or angles) that are defined in the chemical component dictionary. The Link column lists molecule types, if any, to which the group is linked. The Z score for a bond length (or angle) is the number of standard deviations the observed value is removed from the expected value. A bond length (or angle) with $|Z| > 2$ is considered an outlier worth inspection. RMSZ is the root-mean-square of all Z scores of the bond lengths (or angles).

Mol	Type	Chain	Res	Link	Bond lengths			Bond angles		
					Counts	RMSZ	# Z > 2	Counts	RMSZ	# Z > 2
3	CO3	A	1002	-	0,3,3	0.00	-	0,3,3	0.00	-
4	SO4	A	1004	-	4,4,4	0.15	0	6,6,6	0.06	0
4	SO4	A	1005	-	4,4,4	0.14	0	6,6,6	0.06	0
4	SO4	A	1006	-	4,4,4	0.14	0	6,6,6	0.06	0
5	R5T	A	1007	2	24,25,25	2.73	6 (25%)	31,35,35	2.70	6 (19%)
6	1PE	A	1008	-	8,8,15	0.48	0	7,7,14	0.26	0
4	SO4	A	1009	-	4,4,4	0.14	0	6,6,6	0.06	0
3	CO3	B	1002	-	0,3,3	0.00	-	0,3,3	0.00	-
4	SO4	B	1004	-	4,4,4	0.16	0	6,6,6	0.05	0
4	SO4	B	1005	-	4,4,4	0.14	0	6,6,6	0.06	0
5	R5T	B	1006	2	24,25,25	2.69	6 (25%)	31,35,35	2.75	7 (22%)
6	1PE	B	1007	-	13,13,15	0.46	0	12,12,14	0.40	0
6	1PE	B	1008	-	6,6,15	0.44	0	5,5,14	0.32	0
3	CO3	C	1002	-	0,3,3	0.00	-	0,3,3	0.00	-
4	SO4	C	1004	-	4,4,4	0.14	0	6,6,6	0.05	0
4	SO4	C	1005	-	4,4,4	0.13	0	6,6,6	0.06	0
4	SO4	C	1006	-	4,4,4	0.14	0	6,6,6	0.06	0
5	R5T	C	1007	2	24,25,25	2.73	6 (25%)	31,35,35	2.73	5 (16%)
6	1PE	C	1008	-	11,11,15	0.47	0	10,10,14	0.27	0
6	1PE	C	1009	-	8,8,15	0.48	0	7,7,14	0.28	0
6	1PE	C	1010	-	7,7,15	0.43	0	6,6,14	0.27	0
3	CO3	D	1002	-	0,3,3	0.00	-	0,3,3	0.00	-
5	R5T	D	1004	2	24,25,25	2.62	6 (25%)	31,35,35	2.80	9 (29%)
6	1PE	D	1005	-	8,8,15	0.49	0	7,7,14	0.27	0
3	CO3	E	1002	-	0,3,3	0.00	-	0,3,3	0.00	-
5	R5T	E	1004	2	24,25,25	2.72	6 (25%)	31,35,35	2.72	8 (25%)
6	1PE	E	1005	-	11,11,15	0.46	0	10,10,14	0.27	0
6	1PE	E	1006	-	12,12,15	0.48	0	11,11,14	0.33	0
6	1PE	E	1007	-	7,7,15	0.47	0	6,6,14	0.45	0
4	SO4	E	1008	-	4,4,4	0.15	0	6,6,6	0.06	0
3	CO3	F	1002	-	0,3,3	0.00	-	0,3,3	0.00	-
4	SO4	F	1004	-	4,4,4	0.15	0	6,6,6	0.06	0
5	R5T	F	1005	2	24,25,25	2.76	6 (25%)	31,35,35	2.58	7 (22%)
6	1PE	F	1006	-	7,7,15	0.48	0	6,6,14	0.33	0
6	1PE	F	1007	-	7,7,15	0.50	0	6,6,14	0.25	0
4	SO4	F	1008	-	4,4,4	0.14	0	6,6,6	0.05	0
3	CO3	G	1002	-	0,3,3	0.00	-	0,3,3	0.00	-
4	SO4	G	1004	-	4,4,4	0.14	0	6,6,6	0.06	0
4	SO4	G	1005	-	4,4,4	0.13	0	6,6,6	0.07	0
5	R5T	G	1006	2	24,25,25	2.68	6 (25%)	31,35,35	2.74	6 (19%)
6	1PE	G	1007	-	6,6,15	0.49	0	5,5,14	0.27	0

Mol	Type	Chain	Res	Link	Bond lengths			Bond angles		
					Counts	RMSZ	# Z > 2	Counts	RMSZ	# Z > 2
6	1PE	G	1008	-	9,9,15	0.45	0	8,8,14	0.48	0
7	DMS	G	1009	-	3,3,3	0.64	0	3,3,3	0.46	0
3	CO3	H	1002	-	0,3,3	0.00	-	0,3,3	0.00	-
4	SO4	H	1004	-	4,4,4	0.14	0	6,6,6	0.05	0
5	R5T	H	1005	2	24,25,25	2.60	6 (25%)	31,35,35	2.64	7 (22%)
3	CO3	I	1002	-	0,3,3	0.00	-	0,3,3	0.00	-
5	R5T	I	1004	2	24,25,25	2.69	6 (25%)	31,35,35	2.72	6 (19%)
6	1PE	I	1005	-	12,12,15	0.47	0	11,11,14	0.26	0
6	1PE	I	1006	-	7,7,15	0.44	0	6,6,14	0.27	0
3	CO3	J	1002	-	0,3,3	0.00	-	0,3,3	0.00	-
5	R5T	J	1004	2	24,25,25	2.68	6 (25%)	31,35,35	2.80	7 (22%)
6	1PE	J	1005	-	8,8,15	0.48	0	7,7,14	0.30	0
6	1PE	J	1006	-	11,11,15	0.47	0	10,10,14	0.25	0
4	SO4	J	1007	-	4,4,4	0.13	0	6,6,6	0.06	0
4	SO4	J	1008	-	4,4,4	0.15	0	6,6,6	0.06	0
3	CO3	K	1002	-	0,3,3	0.00	-	0,3,3	0.00	-
4	SO4	K	1004	-	4,4,4	0.14	0	6,6,6	0.06	0
4	SO4	K	1005	-	4,4,4	0.14	0	6,6,6	0.05	0
4	SO4	K	1006	-	4,4,4	0.15	0	6,6,6	0.06	0
5	R5T	K	1007	2	24,25,25	2.70	5 (20%)	31,35,35	2.87	7 (22%)
6	1PE	K	1008	-	12,12,15	0.46	0	11,11,14	0.26	0
3	CO3	L	1002	-	0,3,3	0.00	-	0,3,3	0.00	-
4	SO4	L	1004	-	4,4,4	0.14	0	6,6,6	0.05	0
4	SO4	L	1005	-	4,4,4	0.15	0	6,6,6	0.06	0
5	R5T	L	1006	2	21,22,25	2.84	5 (23%)	25,29,35	3.03	7 (28%)
6	1PE	L	1007	-	7,7,15	0.53	0	6,6,14	0.24	0
4	SO4	L	1008	-	4,4,4	0.14	0	6,6,6	0.06	0

In the following table, the Chirals column lists the number of chiral outliers, the number of chiral centers analysed, the number of these observed in the model and the number defined in the chemical component dictionary. Similar counts are reported in the Torsion and Rings columns. '-' means no outliers of that kind were identified.

Mol	Type	Chain	Res	Link	Chirals	Torsions	Rings
3	CO3	A	1002	-	-	0/0/0/0	0/0/0/0
4	SO4	A	1004	-	-	0/0/0/0	0/0/0/0
4	SO4	A	1005	-	-	0/0/0/0	0/0/0/0
4	SO4	A	1006	-	-	0/0/0/0	0/0/0/0
5	R5T	A	1007	2	-	0/23/23/23	0/2/2/2
6	1PE	A	1008	-	-	0/6/6/13	0/0/0/0
4	SO4	A	1009	-	-	0/0/0/0	0/0/0/0

Continued on next page...

Continued from previous page...

Mol	Type	Chain	Res	Link	Chirals	Torsions	Rings
3	CO3	B	1002	-	-	0/0/0/0	0/0/0/0
4	SO4	B	1004	-	-	0/0/0/0	0/0/0/0
4	SO4	B	1005	-	-	0/0/0/0	0/0/0/0
5	R5T	B	1006	2	-	0/23/23/23	0/2/2/2
6	1PE	B	1007	-	-	0/11/11/13	0/0/0/0
6	1PE	B	1008	-	-	0/4/4/13	0/0/0/0
3	CO3	C	1002	-	-	0/0/0/0	0/0/0/0
4	SO4	C	1004	-	-	0/0/0/0	0/0/0/0
4	SO4	C	1005	-	-	0/0/0/0	0/0/0/0
4	SO4	C	1006	-	-	0/0/0/0	0/0/0/0
5	R5T	C	1007	2	-	0/23/23/23	0/2/2/2
6	1PE	C	1008	-	-	0/9/9/13	0/0/0/0
6	1PE	C	1009	-	-	0/6/6/13	0/0/0/0
6	1PE	C	1010	-	-	0/5/5/13	0/0/0/0
3	CO3	D	1002	-	-	0/0/0/0	0/0/0/0
5	R5T	D	1004	2	-	0/23/23/23	0/2/2/2
6	1PE	D	1005	-	-	0/6/6/13	0/0/0/0
3	CO3	E	1002	-	-	0/0/0/0	0/0/0/0
5	R5T	E	1004	2	-	0/23/23/23	0/2/2/2
6	1PE	E	1005	-	-	0/9/9/13	0/0/0/0
6	1PE	E	1006	-	-	0/10/10/13	0/0/0/0
6	1PE	E	1007	-	-	0/5/5/13	0/0/0/0
4	SO4	E	1008	-	-	0/0/0/0	0/0/0/0
3	CO3	F	1002	-	-	0/0/0/0	0/0/0/0
4	SO4	F	1004	-	-	0/0/0/0	0/0/0/0
5	R5T	F	1005	2	-	0/23/23/23	0/2/2/2
6	1PE	F	1006	-	-	0/5/5/13	0/0/0/0
6	1PE	F	1007	-	-	0/5/5/13	0/0/0/0
4	SO4	F	1008	-	-	0/0/0/0	0/0/0/0
3	CO3	G	1002	-	-	0/0/0/0	0/0/0/0
4	SO4	G	1004	-	-	0/0/0/0	0/0/0/0
4	SO4	G	1005	-	-	0/0/0/0	0/0/0/0
5	R5T	G	1006	2	-	0/23/23/23	0/2/2/2
6	1PE	G	1007	-	-	0/4/4/13	0/0/0/0
6	1PE	G	1008	-	-	0/7/7/13	0/0/0/0
7	DMS	G	1009	-	-	0/0/0/0	0/0/0/0
3	CO3	H	1002	-	-	0/0/0/0	0/0/0/0
4	SO4	H	1004	-	-	0/0/0/0	0/0/0/0
5	R5T	H	1005	2	-	0/23/23/23	0/2/2/2
3	CO3	I	1002	-	-	0/0/0/0	0/0/0/0
5	R5T	I	1004	2	-	0/23/23/23	0/2/2/2
6	1PE	I	1005	-	-	0/10/10/13	0/0/0/0

Continued on next page...

Continued from previous page...

Mol	Type	Chain	Res	Link	Chirals	Torsions	Rings
6	1PE	I	1006	-	-	0/5/5/13	0/0/0/0
3	CO3	J	1002	-	-	0/0/0/0	0/0/0/0
5	R5T	J	1004	2	-	0/23/23/23	0/2/2/2
6	1PE	J	1005	-	-	0/6/6/13	0/0/0/0
6	1PE	J	1006	-	-	0/9/9/13	0/0/0/0
4	SO4	J	1007	-	-	0/0/0/0	0/0/0/0
4	SO4	J	1008	-	-	0/0/0/0	0/0/0/0
3	CO3	K	1002	-	-	0/0/0/0	0/0/0/0
4	SO4	K	1004	-	-	0/0/0/0	0/0/0/0
4	SO4	K	1005	-	-	0/0/0/0	0/0/0/0
4	SO4	K	1006	-	-	0/0/0/0	0/0/0/0
5	R5T	K	1007	2	-	0/23/23/23	0/2/2/2
6	1PE	K	1008	-	-	0/10/10/13	0/0/0/0
3	CO3	L	1002	-	-	0/0/0/0	0/0/0/0
4	SO4	L	1004	-	-	0/0/0/0	0/0/0/0
4	SO4	L	1005	-	-	0/0/0/0	0/0/0/0
5	R5T	L	1006	2	-	0/20/20/23	0/2/2/2
6	1PE	L	1007	-	-	0/5/5/13	0/0/0/0
4	SO4	L	1008	-	-	0/0/0/0	0/0/0/0

All (70) bond length outliers are listed below:

Mol	Chain	Res	Type	Atoms	Z	Observed(Å)	Ideal(Å)
5	E	1004	R5T	CAT-CA	-8.14	1.39	1.52
5	F	1005	R5T	CAT-CA	-8.13	1.39	1.52
5	K	1007	R5T	CAT-CA	-8.01	1.39	1.52
5	J	1004	R5T	CAT-CA	-7.81	1.39	1.52
5	L	1006	R5T	CAT-CA	-7.79	1.39	1.52
5	B	1006	R5T	CAT-CA	-7.77	1.39	1.52
5	A	1007	R5T	CAT-CA	-7.76	1.39	1.52
5	G	1006	R5T	CAT-CA	-7.72	1.39	1.52
5	D	1004	R5T	CAT-CA	-7.72	1.39	1.52
5	C	1007	R5T	CAT-CA	-7.59	1.40	1.52
5	F	1005	R5T	NAN-NAW	-7.48	1.20	1.38
5	H	1005	R5T	CAT-CA	-7.48	1.40	1.52
5	I	1004	R5T	CAT-CA	-7.38	1.40	1.52
5	A	1007	R5T	NAN-NAW	-7.22	1.21	1.38
5	I	1004	R5T	NAN-NAW	-7.19	1.21	1.38
5	K	1007	R5T	NAN-NAW	-7.17	1.21	1.38
5	E	1004	R5T	NAN-NAW	-7.17	1.21	1.38
5	L	1006	R5T	NAN-NAW	-7.16	1.21	1.38
5	J	1004	R5T	NAN-NAW	-7.14	1.21	1.38

Continued on next page...

Continued from previous page...

Mol	Chain	Res	Type	Atoms	Z	Observed(Å)	Ideal(Å)
5	G	1006	R5T	NAN-NAW	-7.11	1.21	1.38
5	C	1007	R5T	NAN-NAW	-7.05	1.21	1.38
5	B	1006	R5T	NAN-NAW	-6.97	1.21	1.38
5	D	1004	R5T	NAN-NAW	-6.79	1.22	1.38
5	H	1005	R5T	NAN-NAW	-6.77	1.22	1.38
5	F	1005	R5T	CAU-NAW	-5.38	1.33	1.44
5	L	1006	R5T	CAU-NAW	-5.38	1.33	1.44
5	A	1007	R5T	CAU-NAW	-5.35	1.33	1.44
5	E	1004	R5T	CAU-NAW	-5.32	1.33	1.44
5	J	1004	R5T	CAU-NAW	-5.32	1.33	1.44
5	H	1005	R5T	CAU-NAW	-5.31	1.33	1.44
5	K	1007	R5T	CAU-NAW	-5.29	1.33	1.44
5	G	1006	R5T	CAU-NAW	-5.25	1.33	1.44
5	C	1007	R5T	CAU-NAW	-5.24	1.33	1.44
5	D	1004	R5T	CAU-NAW	-5.20	1.33	1.44
5	B	1006	R5T	CAU-NAW	-5.20	1.33	1.44
5	I	1004	R5T	CAU-NAW	-5.17	1.33	1.44
5	F	1005	R5T	CAM-CAG	-2.32	1.32	1.37
5	G	1006	R5T	CAM-CAG	-2.30	1.32	1.37
5	J	1004	R5T	CAM-CAG	-2.30	1.32	1.37
5	A	1007	R5T	CAM-CAG	-2.30	1.32	1.37
5	B	1006	R5T	CAM-CAG	-2.29	1.32	1.37
5	K	1007	R5T	CAM-CAG	-2.27	1.32	1.37
5	C	1007	R5T	CAM-CAG	-2.27	1.32	1.37
5	E	1004	R5T	CAM-CAG	-2.22	1.33	1.37
5	I	1004	R5T	CAM-CAG	-2.21	1.33	1.37
5	L	1006	R5T	CAM-CAG	-2.16	1.33	1.37
5	D	1004	R5T	CAM-CAG	-2.16	1.33	1.37
5	F	1005	R5T	CAG-CAH	-2.12	1.32	1.37
5	C	1007	R5T	CAG-CAH	-2.11	1.32	1.37
5	H	1005	R5T	CAM-CAG	-2.11	1.33	1.37
5	G	1006	R5T	CAG-CAH	-2.08	1.32	1.37
5	I	1004	R5T	CAG-CAH	-2.06	1.32	1.37
5	H	1005	R5T	CAG-CAH	-2.05	1.32	1.37
5	E	1004	R5T	CAG-CAH	-2.04	1.32	1.37
5	J	1004	R5T	CAG-CAH	-2.03	1.32	1.37
5	A	1007	R5T	CAG-CAH	-2.02	1.32	1.37
5	D	1004	R5T	CAG-CAH	-2.02	1.32	1.37
5	B	1006	R5T	CAG-CAH	-2.02	1.32	1.37
5	F	1005	R5T	OAF-NAO	3.56	1.46	1.39
5	J	1004	R5T	OAF-NAO	3.61	1.46	1.39
5	K	1007	R5T	OAF-NAO	3.63	1.46	1.39

Continued on next page...

Continued from previous page...

Mol	Chain	Res	Type	Atoms	Z	Observed(Å)	Ideal(Å)
5	E	1004	R5T	OAF-NAO	3.68	1.46	1.39
5	L	1006	R5T	OAF-NAO	3.77	1.46	1.39
5	H	1005	R5T	OAF-NAO	3.78	1.46	1.39
5	D	1004	R5T	OAF-NAO	3.88	1.46	1.39
5	G	1006	R5T	OAF-NAO	4.01	1.46	1.39
5	A	1007	R5T	OAF-NAO	4.34	1.47	1.39
5	B	1006	R5T	OAF-NAO	4.35	1.47	1.39
5	I	1004	R5T	OAF-NAO	4.73	1.48	1.39
5	C	1007	R5T	OAF-NAO	5.15	1.48	1.39

All (82) bond angle outliers are listed below:

Mol	Chain	Res	Type	Atoms	Z	Observed(°)	Ideal(°)
5	K	1007	R5T	CAX-OAQ-CAR	-6.15	111.06	121.04
5	L	1006	R5T	CAX-OAQ-CAR	-5.47	108.92	115.68
5	J	1004	R5T	CAX-OAQ-CAR	-4.65	113.49	121.04
5	H	1005	R5T	CAX-OAQ-CAR	-4.32	114.03	121.04
5	D	1004	R5T	OAD-CAR-N	-4.26	117.54	124.87
5	H	1005	R5T	CAM-NAW-NAN	-4.09	109.23	111.93
5	E	1004	R5T	OAD-CAR-N	-4.01	117.97	124.87
5	D	1004	R5T	CAM-NAW-NAN	-4.01	109.28	111.93
5	I	1004	R5T	CAM-NAW-NAN	-3.90	109.35	111.93
5	C	1007	R5T	OAD-CAR-N	-3.69	118.53	124.87
5	C	1007	R5T	CAM-NAW-NAN	-3.57	109.57	111.93
5	L	1006	R5T	OAQ-CAR-OAD	-3.56	119.73	124.60
5	A	1007	R5T	OAD-CAR-N	-3.54	118.78	124.87
5	K	1007	R5T	CAM-NAW-NAN	-3.49	109.62	111.93
5	E	1004	R5T	CAM-NAW-NAN	-3.48	109.63	111.93
5	B	1006	R5T	CAM-NAW-NAN	-3.47	109.63	111.93
5	L	1006	R5T	CAM-NAW-NAN	-3.39	109.69	111.93
5	B	1006	R5T	OAD-CAR-N	-3.32	119.15	124.87
5	G	1006	R5T	CAM-NAW-NAN	-3.29	109.76	111.93
5	J	1004	R5T	CAM-NAW-NAN	-3.27	109.77	111.93
5	I	1004	R5T	OAD-CAR-N	-3.18	119.40	124.87
5	A	1007	R5T	CAM-NAW-NAN	-3.14	109.85	111.93
5	G	1006	R5T	OAD-CAR-N	-3.05	119.63	124.87
5	F	1005	R5T	CAM-NAW-NAN	-3.00	109.94	111.93
5	F	1005	R5T	OAD-CAR-N	-3.00	119.71	124.87
5	J	1004	R5T	OAQ-CAR-OAD	-2.97	119.77	125.56
5	L	1006	R5T	OAD-CAR-N	-2.95	119.80	124.87
5	I	1004	R5T	OAQ-CAR-OAD	-2.94	119.83	125.56
5	H	1005	R5T	OAQ-CAR-OAD	-2.91	119.89	125.56

Continued on next page...

Continued from previous page...

Mol	Chain	Res	Type	Atoms	Z	Observed(°)	Ideal(°)
5	H	1005	R5T	OAD-CAR-N	-2.88	119.92	124.87
5	K	1007	R5T	OAQ-CAR-OAD	-2.79	120.13	125.56
5	E	1004	R5T	CAX-OAQ-CAR	-2.72	116.64	121.04
5	D	1004	R5T	CAT-CA-N	-2.70	105.76	112.92
5	G	1006	R5T	OAQ-CAR-OAD	-2.54	120.61	125.56
5	F	1005	R5T	OAQ-CAR-OAD	-2.53	120.63	125.56
5	J	1004	R5T	OAD-CAR-N	-2.51	120.56	124.87
5	B	1006	R5T	OAQ-CAR-OAD	-2.51	120.68	125.56
5	E	1004	R5T	OAQ-CAR-OAD	-2.50	120.69	125.56
5	K	1007	R5T	OAD-CAR-N	-2.42	120.71	124.87
5	D	1004	R5T	OAQ-CAR-OAD	-2.33	121.03	125.56
5	A	1007	R5T	OAQ-CAR-OAD	-2.30	121.07	125.56
5	E	1004	R5T	CAT-CA-N	-2.26	106.91	112.92
5	F	1005	R5T	CAX-OAQ-CAR	-2.13	117.58	121.04
5	B	1006	R5T	CAJ-CAT-CA	-2.10	117.38	120.82
5	D	1004	R5T	CAT-CA-C	2.23	113.00	108.01
5	D	1004	R5T	CA-N-CAR	2.23	124.71	120.97
5	H	1005	R5T	CAU-NAW-NAN	4.90	123.14	118.80
5	L	1006	R5T	OAQ-CAR-N	5.04	120.47	110.82
5	K	1007	R5T	OAQ-CAR-N	5.06	119.13	110.06
5	C	1007	R5T	OAQ-CAR-N	5.20	119.38	110.06
5	F	1005	R5T	OAQ-CAR-N	5.35	119.64	110.06
5	J	1004	R5T	OAQ-CAR-N	5.36	119.67	110.06
5	G	1006	R5T	OAQ-CAR-N	5.40	119.73	110.06
5	A	1007	R5T	OAQ-CAR-N	5.63	120.16	110.06
5	B	1006	R5T	OAQ-CAR-N	5.64	120.16	110.06
5	H	1005	R5T	OAQ-CAR-N	5.66	120.19	110.06
5	I	1004	R5T	OAQ-CAR-N	5.96	120.73	110.06
5	E	1004	R5T	OAQ-CAR-N	6.30	121.34	110.06
5	E	1004	R5T	CAU-NAW-NAN	6.32	124.41	118.80
5	D	1004	R5T	OAQ-CAR-N	6.34	121.42	110.06
5	L	1006	R5T	CAU-NAW-NAN	6.76	124.80	118.80
5	D	1004	R5T	CAU-NAW-NAN	6.76	124.80	118.80
5	I	1004	R5T	CAU-NAW-NAN	7.26	125.24	118.80
5	F	1005	R5T	CAU-NAW-NAN	7.60	125.55	118.80
5	K	1007	R5T	CAU-NAW-NAN	8.08	125.97	118.80
5	C	1007	R5T	CAU-NAW-NAN	8.23	126.10	118.80
5	A	1007	R5T	CAU-NAW-NAN	8.31	126.18	118.80
5	G	1006	R5T	CAH-NAN-NAW	8.48	109.75	103.70
5	F	1005	R5T	CAH-NAN-NAW	8.48	109.75	103.70
5	J	1004	R5T	CAH-NAN-NAW	8.52	109.78	103.70
5	B	1006	R5T	CAH-NAN-NAW	8.53	109.79	103.70

Continued on next page...

Continued from previous page...

Mol	Chain	Res	Type	Atoms	Z	Observed(°)	Ideal(°)
5	B	1006	R5T	CAU-NAW-NAN	8.54	126.38	118.80
5	A	1007	R5T	CAH-NAN-NAW	8.60	109.84	103.70
5	C	1007	R5T	CAH-NAN-NAW	8.67	109.89	103.70
5	J	1004	R5T	CAU-NAW-NAN	8.69	126.51	118.80
5	K	1007	R5T	CAH-NAN-NAW	8.83	110.00	103.70
5	G	1006	R5T	CAU-NAW-NAN	8.95	126.74	118.80
5	E	1004	R5T	CAH-NAN-NAW	9.01	110.13	103.70
5	D	1004	R5T	CAH-NAN-NAW	9.05	110.15	103.70
5	L	1006	R5T	CAH-NAN-NAW	9.08	110.18	103.70
5	I	1004	R5T	CAH-NAN-NAW	9.32	110.35	103.70
5	H	1005	R5T	CAH-NAN-NAW	9.34	110.36	103.70

There are no chirality outliers.

There are no torsion outliers.

There are no ring outliers.

24 monomers are involved in 57 short contacts:

Mol	Chain	Res	Type	Clashes	Symm-Clashes
3	A	1002	CO3	1	0
6	A	1008	1PE	2	0
4	B	1004	SO4	2	0
6	B	1007	1PE	6	0
6	C	1008	1PE	2	0
6	C	1010	1PE	11	0
5	D	1004	R5T	1	0
6	D	1005	1PE	1	0
6	E	1005	1PE	3	0
6	E	1006	1PE	8	0
4	F	1004	SO4	1	0
5	F	1005	R5T	1	0
6	F	1006	1PE	2	0
5	G	1006	R5T	1	0
6	G	1008	1PE	2	0
7	G	1009	DMS	2	0
4	H	1004	SO4	1	0
5	H	1005	R5T	1	0
6	I	1005	1PE	3	0
6	J	1006	1PE	3	0
4	K	1005	SO4	1	0
6	K	1008	1PE	1	0
5	L	1006	R5T	1	0

Continued on next page...

Continued from previous page...

Mol	Chain	Res	Type	Clashes	Symm-Clashes
4	L	1008	SO4	1	0

5.7 Other polymers [i](#)

There are no such residues in this entry.

5.8 Polymer linkage issues [i](#)

There are no chain breaks in this entry.

6 Fit of model and data ⓘ

6.1 Protein, DNA and RNA chains ⓘ

In the following table, the column labelled ‘#RSRZ > 2’ contains the number (and percentage) of RSRZ outliers, followed by percent RSRZ outliers for the chain as percentile scores relative to all X-ray entries and entries of similar resolution. The OWAB column contains the minimum, median, 95th percentile and maximum values of the occupancy-weighted average B-factor per residue. The column labelled ‘Q < 0.9’ lists the number of (and percentage) of residues with an average occupancy less than 0.9.

Mol	Chain	Analysed	<RSRZ>	#RSRZ>2	OWAB(Å ²)	Q<0.9
1	A	514/528 (97%)	-0.22	6 (1%) 79 75	27, 41, 65, 95	0
1	B	511/528 (96%)	0.15	26 (5%) 29 22	29, 48, 80, 113	1 (0%)
1	C	518/528 (98%)	-0.14	10 (1%) 67 61	27, 43, 72, 111	0
1	D	513/528 (97%)	-0.25	2 (0%) 92 91	28, 40, 63, 100	0
1	E	513/528 (97%)	-0.23	2 (0%) 92 91	31, 43, 64, 97	0
1	F	508/528 (96%)	0.03	20 (3%) 40 32	30, 48, 82, 101	0
1	G	514/528 (97%)	-0.22	5 (0%) 82 79	30, 42, 68, 103	0
1	H	511/528 (96%)	0.03	17 (3%) 47 39	29, 46, 79, 102	1 (0%)
1	I	516/528 (97%)	-0.20	5 (0%) 82 79	27, 42, 72, 127	0
1	J	512/528 (96%)	-0.19	3 (0%) 89 88	31, 43, 66, 95	0
1	K	509/528 (96%)	-0.23	1 (0%) 94 95	32, 44, 63, 89	0
1	L	509/528 (96%)	-0.02	15 (2%) 52 45	34, 49, 79, 144	0
All	All	6148/6336 (97%)	-0.12	112 (1%) 69 63	27, 44, 73, 144	2 (0%)

All (112) RSRZ outliers are listed below:

Mol	Chain	Res	Type	RSRZ
1	L	363	GLY	9.5
1	F	157	LEU	4.8
1	H	124	GLU	4.7
1	J	85	ALA	4.6
1	E	363	GLY	4.5
1	B	119	GLY	4.5
1	B	196	ALA	4.2
1	L	365	VAL	4.0
1	L	144	ILE	3.8
1	B	117	ILE	3.7
1	A	136	GLY	3.7

Continued on next page...

Continued from previous page...

Mol	Chain	Res	Type	RSRZ
1	C	603	ASP	3.5
1	I	229	ASN	3.5
1	H	132	VAL	3.5
1	G	196	ALA	3.4
1	F	365	VAL	3.4
1	B	202	ASP	3.4
1	B	136	GLY	3.4
1	L	362	LYS	3.3
1	B	144	ILE	3.3
1	B	183	ASN	3.3
1	C	124	GLU	3.2
1	L	217	ASN	3.2
1	F	141	PRO	3.2
1	L	145	SER	3.1
1	L	364	ASP	3.1
1	F	123	VAL	3.1
1	F	363	GLY	3.0
1	F	145	SER	3.0
1	I	124	GLU	2.9
1	I	230	VAL	2.9
1	H	118	LYS	2.9
1	B	145	SER	2.9
1	D	255	THR	2.9
1	J	136	GLY	2.8
1	H	141	PRO	2.8
1	H	602	ASN	2.8
1	B	180	ASP	2.8
1	H	272	ASN	2.7
1	G	195	VAL	2.7
1	G	362	LYS	2.7
1	L	155	GLU	2.7
1	E	362	LYS	2.7
1	F	197	ASP	2.6
1	H	603	ASP	2.6
1	L	176	TYR	2.6
1	B	195	VAL	2.5
1	B	146	SER	2.5
1	B	134	ASN	2.5
1	B	230	VAL	2.5
1	L	146	SER	2.5
1	H	197	ASP	2.5
1	F	210	LEU	2.5

Continued on next page...

Continued from previous page...

Mol	Chain	Res	Type	RSRZ
1	B	270	TYR	2.5
1	B	421	VAL	2.5
1	H	119	GLY	2.4
1	A	255	THR	2.4
1	C	196	ALA	2.4
1	H	196	ALA	2.4
1	I	255	THR	2.4
1	H	144	ILE	2.4
1	B	118	LYS	2.4
1	H	146	SER	2.4
1	J	603	ASP	2.4
1	F	159	ASP	2.3
1	H	366	LYS	2.3
1	B	154	SER	2.3
1	F	177	MET	2.3
1	F	148	VAL	2.3
1	F	185	VAL	2.3
1	B	135	PRO	2.3
1	B	141	PRO	2.2
1	C	274	ALA	2.2
1	B	276	THR	2.2
1	K	364	ASP	2.2
1	F	119	GLY	2.2
1	D	603	ASP	2.2
1	A	145	SER	2.2
1	C	181	ASN	2.2
1	C	273	ASN	2.2
1	L	153	VAL	2.2
1	H	215	HIS	2.2
1	I	198	LEU	2.2
1	C	195	VAL	2.2
1	L	165	PHE	2.2
1	F	198	LEU	2.1
1	C	275	ASP	2.1
1	H	165	PHE	2.1
1	B	157	LEU	2.1
1	L	366	LYS	2.1
1	A	365	VAL	2.1
1	B	124	GLU	2.1
1	F	272	ASN	2.1
1	L	148	VAL	2.1
1	F	122	ASN	2.1

Continued on next page...

Continued from previous page...

Mol	Chain	Res	Type	RSRZ
1	G	254	SER	2.1
1	B	365	VAL	2.1
1	F	179	ASN	2.1
1	H	130	PHE	2.1
1	A	198	LEU	2.0
1	A	135	PRO	2.0
1	B	121	CYS	2.0
1	C	149	ASN	2.0
1	F	121	CYS	2.0
1	G	141	PRO	2.0
1	B	149	ASN	2.0
1	F	134	ASN	2.0
1	C	194	SER	2.0
1	L	119	GLY	2.0
1	B	192	CYS	2.0
1	F	507	GLU	2.0
1	H	227	GLU	2.0

6.2 Non-standard residues in protein, DNA, RNA chains [i](#)

There are no non-standard protein/DNA/RNA residues in this entry.

6.3 Carbohydrates [i](#)

There are no carbohydrates in this entry.

6.4 Ligands [i](#)

In the following table, the Atoms column lists the number of modelled atoms in the group and the number defined in the chemical component dictionary. LLDF column lists the quality of electron density of the group with respect to its neighbouring residues in protein, DNA or RNA chains. The B-factors column lists the minimum, median, 95th percentile and maximum values of B factors of atoms in the group. The column labelled 'Q< 0.9' lists the number of atoms with occupancy less than 0.9.

Mol	Type	Chain	Res	Atoms	RSCC	RSR	LLDF	B-factors(\AA^2)	Q<0.9
4	SO4	L	1008	5/5	0.88	0.40	14.47	104,105,109,109	0
4	SO4	L	1005	5/5	0.91	0.21	5.50	69,72,76,79	0
4	SO4	G	1005	5/5	0.95	0.34	4.77	76,82,82,88	0
6	1PE	C	1010	8/16	0.92	0.27	4.34	40,47,58,60	0

Continued on next page...

Continued from previous page...

Mol	Type	Chain	Res	Atoms	RSCC	RSR	LLDF	B-factors(\AA^2)	Q<0.9
3	CO3	F	1002	4/4	0.95	0.20	3.84	35,45,48,51	0
3	CO3	D	1002	4/4	0.93	0.19	3.69	44,55,58,60	0
4	SO4	C	1005	5/5	0.94	0.29	3.67	84,85,89,105	0
5	R5T	I	1004	24/24	0.90	0.21	3.47	31,47,65,73	0
4	SO4	G	1004	5/5	0.92	0.20	3.35	83,90,90,95	0
6	1PE	K	1008	13/16	0.92	0.20	3.31	34,52,64,67	0
6	1PE	C	1009	9/16	0.85	0.23	2.97	48,62,78,79	0
6	1PE	E	1007	8/16	0.82	0.22	2.93	47,64,68,71	0
6	1PE	G	1007	7/16	0.89	0.22	2.79	56,58,68,72	0
6	1PE	I	1006	8/16	0.92	0.18	2.64	47,50,51,58	0
4	SO4	J	1007	5/5	0.84	0.33	2.52	126,131,132,133	0
3	CO3	C	1002	4/4	0.91	0.21	2.49	42,46,48,51	0
7	DMS	G	1009	4/4	0.94	0.25	2.46	39,53,74,76	0
5	R5T	F	1005	24/24	0.90	0.22	2.43	41,60,74,85	0
5	R5T	L	1006	21/24	0.90	0.19	2.39	34,49,58,61	0
3	CO3	G	1002	4/4	0.91	0.20	2.38	30,34,44,54	0
3	CO3	H	1002	4/4	0.99	0.20	2.32	28,39,44,53	0
4	SO4	A	1009	5/5	0.94	0.19	2.29	79,83,85,89	0
4	SO4	J	1008	5/5	0.86	0.28	2.22	118,119,124,127	0
3	CO3	E	1002	4/4	0.97	0.20	1.55	30,33,36,39	0
6	1PE	A	1008	9/16	0.95	0.18	1.51	41,45,51,53	0
5	R5T	K	1007	24/24	0.93	0.20	1.50	32,49,58,73	0
6	1PE	E	1005	12/16	0.89	0.18	1.45	42,60,68,70	0
5	R5T	A	1007	24/24	0.93	0.20	1.34	30,49,63,64	0
5	R5T	D	1004	24/24	0.93	0.19	1.21	26,44,55,67	0
5	R5T	B	1006	24/24	0.93	0.19	1.16	28,52,65,66	0
4	SO4	B	1005	5/5	0.91	0.16	1.04	85,86,92,93	0
4	SO4	A	1004	5/5	0.91	0.23	0.99	65,78,82,83	0
5	R5T	J	1004	24/24	0.94	0.18	0.98	33,52,85,89	0
3	CO3	A	1002	4/4	0.93	0.15	0.95	27,37,37,40	0
3	CO3	I	1002	4/4	0.96	0.16	0.92	26,31,31,45	0
3	CO3	J	1002	4/4	0.96	0.17	0.83	30,36,40,40	0
6	1PE	F	1007	8/16	0.94	0.19	0.78	32,44,49,56	0
6	1PE	D	1005	9/16	0.94	0.17	0.67	49,50,54,58	0
5	R5T	C	1007	24/24	0.95	0.17	0.63	31,47,55,57	0
5	R5T	G	1006	24/24	0.94	0.17	0.44	32,48,59,64	0
4	SO4	C	1006	5/5	0.81	0.19	0.29	115,118,121,124	0
5	R5T	H	1005	24/24	0.94	0.16	0.29	29,49,63,79	0
5	R5T	E	1004	24/24	0.95	0.17	0.11	31,62,70,75	0
6	1PE	J	1005	9/16	0.96	0.15	-0.27	36,39,52,57	0
4	SO4	K	1005	5/5	0.95	0.14	-0.28	70,72,77,89	0

Continued on next page...

Continued from previous page...

Mol	Type	Chain	Res	Atoms	RSCC	RSR	LLDF	B-factors(\AA^2)	Q<0.9
6	1PE	B	1008	7/16	0.95	0.17	-0.36	42,49,51,57	0
3	CO3	B	1002	4/4	0.97	0.15	-0.39	28,28,29,34	0
6	1PE	G	1008	10/16	0.96	0.15	-0.40	39,48,61,65	0
4	SO4	K	1004	5/5	0.99	0.16	-0.54	34,34,44,44	0
3	CO3	K	1002	4/4	0.96	0.15	-0.66	33,48,58,60	0
4	SO4	B	1004	5/5	0.98	0.13	-0.93	31,32,36,39	0
6	1PE	F	1006	8/16	0.92	0.15	-0.96	40,50,55,59	0
4	SO4	H	1004	5/5	0.98	0.13	-0.98	26,26,40,49	0
3	CO3	L	1002	4/4	0.99	0.13	-1.13	33,37,39,47	0
4	SO4	A	1006	5/5	0.94	0.12	-1.42	71,74,79,83	0
6	1PE	L	1007	8/16	0.96	0.13	-1.77	38,58,60,62	0
2	ZN	J	1001	1/1	0.97	0.07	-2.92	52,52,52,52	0
2	ZN	F	1001	1/1	0.99	0.09	-3.11	48,48,48,48	0
2	ZN	K	1001	1/1	0.98	0.07	-3.42	37,37,37,37	0
2	ZN	L	1003	1/1	0.99	0.08	-3.50	52,52,52,52	0
2	ZN	B	1003	1/1	0.93	0.05	-3.61	41,41,41,41	0
2	ZN	J	1003	1/1	0.99	0.04	-3.66	47,47,47,47	0
4	SO4	F	1004	5/5	0.99	0.12	-3.67	29,30,37,43	0
2	ZN	A	1001	1/1	1.00	0.07	-3.74	40,40,40,40	0
2	ZN	C	1001	1/1	0.97	0.07	-3.89	42,42,42,42	0
2	ZN	C	1003	1/1	0.98	0.08	-3.94	43,43,43,43	0
2	ZN	E	1001	1/1	0.99	0.09	-3.96	40,40,40,40	0
2	ZN	K	1003	1/1	0.99	0.07	-3.97	48,48,48,48	0
2	ZN	A	1003	1/1	0.98	0.08	-4.21	56,56,56,56	0
2	ZN	G	1001	1/1	0.98	0.07	-4.22	42,42,42,42	0
2	ZN	B	1001	1/1	0.97	0.06	-4.27	48,48,48,48	0
2	ZN	F	1003	1/1	0.99	0.07	-4.36	50,50,50,50	0
2	ZN	E	1003	1/1	0.99	0.07	-4.42	48,48,48,48	0
2	ZN	D	1003	1/1	0.97	0.06	-4.49	49,49,49,49	0
2	ZN	I	1003	1/1	0.99	0.07	-5.12	46,46,46,46	0
2	ZN	G	1003	1/1	0.98	0.06	-5.28	44,44,44,44	0
2	ZN	I	1001	1/1	0.99	0.09	-5.48	45,45,45,45	0
2	ZN	L	1001	1/1	0.99	0.06	-6.47	42,42,42,42	0
2	ZN	D	1001	1/1	0.98	0.06	-6.49	43,43,43,43	0
2	ZN	H	1001	1/1	0.99	0.03	-6.56	44,44,44,44	0
2	ZN	H	1003	1/1	0.98	0.03	-8.59	44,44,44,44	0
6	1PE	C	1008	12/16	0.89	0.20	-	47,55,73,75	0
6	1PE	E	1006	13/16	0.90	0.15	-	43,52,59,60	0
4	SO4	A	1005	5/5	0.97	0.15	-	60,66,68,83	0
4	SO4	K	1006	5/5	0.96	0.17	-	62,64,69,77	0
4	SO4	E	1008	5/5	0.93	0.20	-	86,87,90,91	0
6	1PE	B	1007	14/16	0.80	0.26	-	54,69,82,82	0

Continued on next page...

Continued from previous page...

Mol	Type	Chain	Res	Atoms	RSCC	RSR	LLDF	B-factors(\AA^2)	Q<0.9
4	SO4	L	1004	5/5	0.96	0.14	-	86,86,91,92	0
6	1PE	J	1006	12/16	0.82	0.25	-	49,73,83,87	0
4	SO4	C	1004	5/5	0.95	0.22	-	69,77,79,83	0
6	1PE	I	1005	13/16	0.91	0.22	-	51,59,62,64	0
4	SO4	F	1008	5/5	0.95	0.24	-	103,105,107,110	0

6.5 Other polymers [i](#)

There are no such residues in this entry.