



Full wwPDB X-ray Structure Validation Report ⓘ

Feb 13, 2017 – 03:17 pm GMT

PDB ID : 3R8A
Title : X-ray crystal structure of the nuclear hormone receptor PPAR-gamma in a complex with a compound with dual PPAR gamma agonism and Angiotensin II Type I receptor antagonism activity
Authors : Ohren, J.F.
Deposited on : 2011-03-23
Resolution : 2.41 Å(reported)

This is a Full wwPDB X-ray Structure Validation Report for a publicly released PDB entry.

We welcome your comments at validation@mail.wwpdb.org

A user guide is available at

<http://wwpdb.org/validation/2016/XrayValidationReportHelp>

with specific help available everywhere you see the ⓘ symbol.

The following versions of software and data (see [references ⓘ](#)) were used in the production of this report:

MolProbity	:	4.02b-467
Mogul	:	1.7.2 (RC1), CSD as538be (2017)
Xtriage (Phenix)	:	1.9-1692
EDS	:	trunk28620
Percentile statistics	:	20161228.v01 (using entries in the PDB archive December 28th 2016)
Refmac	:	5.8.0135
CCP4	:	6.5.0
Ideal geometry (proteins)	:	Engh & Huber (2001)
Ideal geometry (DNA, RNA)	:	Parkinson et al. (1996)
Validation Pipeline (wwPDB-VP)	:	recalc28949

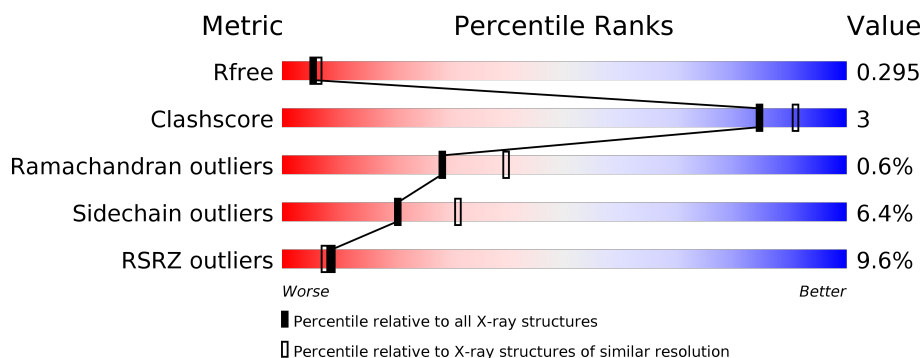
1 Overall quality at a glance

The following experimental techniques were used to determine the structure:

X-RAY DIFFRACTION

The reported resolution of this entry is 2.41 Å.

Percentile scores (ranging between 0-100) for global validation metrics of the entry are shown in the following graphic. The table shows the number of entries on which the scores are based.



Metric	Whole archive (#Entries)	Similar resolution (#Entries, resolution range(Å))
R_{free}	100719	3709 (2.44-2.40)
Clashscore	112137	4241 (2.44-2.40)
Ramachandran outliers	110173	4178 (2.44-2.40)
Sidechain outliers	110143	4179 (2.44-2.40)
RSRZ outliers	101464	3740 (2.44-2.40)

The table below summarises the geometric issues observed across the polymeric chains and their fit to the electron density. The red, orange, yellow and green segments on the lower bar indicate the fraction of residues that contain outliers for ≥ 3 , 2, 1 and 0 types of geometric quality criteria. A grey segment represents the fraction of residues that are not modelled. The numeric value for each fraction is indicated below the corresponding segment, with a dot representing fractions $\leq 5\%$. The upper red bar (where present) indicates the fraction of residues that have poor fit to the electron density. The numeric value is given above the bar.

Mol	Chain	Length	Quality of chain
1	A	282	<div> <div>10%</div> <div>78%</div> <div>10%</div> <div>11%</div> </div>
1	B	282	<div> <div>7%</div> <div>73%</div> <div>11%</div> <div>15%</div> </div>

2 Entry composition

There are 3 unique types of molecules in this entry. The entry contains 4091 atoms, of which 0 are hydrogens and 0 are deuteriums.

In the tables below, the ZeroOcc column contains the number of atoms modelled with zero occupancy, the AltConf column contains the number of residues with at least one atom in alternate conformation and the Trace column contains the number of residues modelled with at most 2 atoms.

- Molecule 1 is a protein called Peroxisome proliferator-activated receptor gamma.

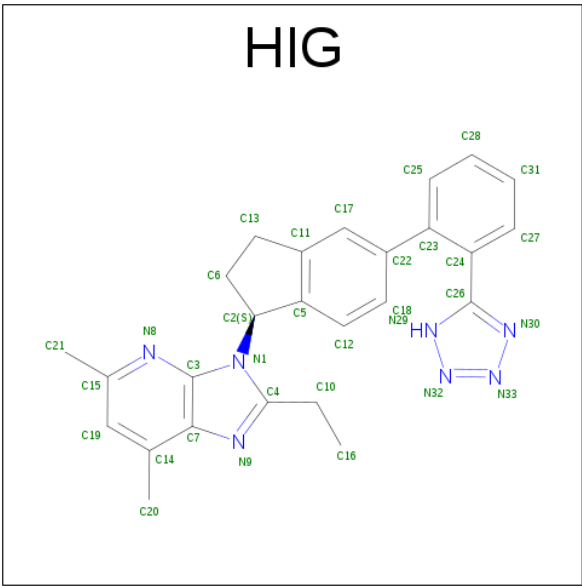
Mol	Chain	Residues	Atoms					ZeroOcc	AltConf	Trace
1	A	251	Total	C	N	O	S	0	3	0
			2014	1299	329	376	10			
1	B	239	Total	C	N	O	S	0	2	0
			1918	1240	314	355	9			

There are 22 discrepancies between the modelled and reference sequences:

Chain	Residue	Modelled	Actual	Comment	Reference
A	196	MET	-	EXPRESSION TAG	UNP P37231
A	197	LYS	-	EXPRESSION TAG	UNP P37231
A	198	LYS	-	EXPRESSION TAG	UNP P37231
A	199	GLY	-	EXPRESSION TAG	UNP P37231
A	200	HIS	-	EXPRESSION TAG	UNP P37231
A	201	HIS	-	EXPRESSION TAG	UNP P37231
A	202	HIS	-	EXPRESSION TAG	UNP P37231
A	203	HIS	-	EXPRESSION TAG	UNP P37231
A	204	HIS	-	EXPRESSION TAG	UNP P37231
A	205	HIS	-	EXPRESSION TAG	UNP P37231
A	206	GLY	-	EXPRESSION TAG	UNP P37231
B	196	MET	-	EXPRESSION TAG	UNP P37231
B	197	LYS	-	EXPRESSION TAG	UNP P37231
B	198	LYS	-	EXPRESSION TAG	UNP P37231
B	199	GLY	-	EXPRESSION TAG	UNP P37231
B	200	HIS	-	EXPRESSION TAG	UNP P37231
B	201	HIS	-	EXPRESSION TAG	UNP P37231
B	202	HIS	-	EXPRESSION TAG	UNP P37231
B	203	HIS	-	EXPRESSION TAG	UNP P37231
B	204	HIS	-	EXPRESSION TAG	UNP P37231
B	205	HIS	-	EXPRESSION TAG	UNP P37231
B	206	GLY	-	EXPRESSION TAG	UNP P37231

- Molecule 2 is 2-ETHYL-5,7-DIMETHYL-3-((1S)-5-[2-(1H-TETRAZOL-5-YL)PHENYL]-2,3-DIHYDRO-1H-INDEN-1-YL)-3H-IMIDAZO[4,5-B]PYRIDINE (three-letter code: HIG)

(formula: C₂₆H₂₅N₇).



Mol	Chain	Residues	Atoms			ZeroOcc	AltConf
2	A	1	Total	C	N	0	0
			33	26	7		
2	B	1	Total	C	N	0	0
			33	26	7		

- Molecule 3 is water.

Mol	Chain	Residues	Atoms		ZeroOcc	AltConf
3	A	59	Total	O	0	0
			59	59		
3	B	34	Total	O	0	0
			34	34		

4 Data and refinement statistics

Property	Value	Source
Space group	C 1 2 1	Depositor
Cell constants a, b, c, α , β , γ	92.70Å 61.83Å 118.94Å 90.00° 102.04° 90.00°	Depositor
Resolution (Å)	37.80 – 2.41 36.32 – 2.41	Depositor EDS
% Data completeness (in resolution range)	95.7 (37.80-2.41) 95.7 (36.32-2.41)	Depositor EDS
R_{merge}	0.03	Depositor
R_{sym}	(Not available)	Depositor
$\langle I/\sigma(I) \rangle$ ¹	3.08 (at 2.42Å)	Xtriage
Refinement program	BUSTER 2.9.6	Depositor
R, R_{free}	0.230 , 0.281 0.234 , 0.295	Depositor DCC
R_{free} test set	1287 reflections (5.54%)	DCC
Wilson B-factor (Å ²)	59.2	Xtriage
Anisotropy	0.082	Xtriage
Bulk solvent k_{sol} (e/Å ³), B_{sol} (Å ²)	0.34 , 63.0	EDS
L-test for twinning ²	$\langle L \rangle = 0.49$, $\langle L^2 \rangle = 0.32$	Xtriage
Estimated twinning fraction	No twinning to report.	Xtriage
F_o, F_c correlation	0.94	EDS
Total number of atoms	4091	wwPDB-VP
Average B, all atoms (Å ²)	74.0	wwPDB-VP

Xtriage's analysis on translational NCS is as follows: *The largest off-origin peak in the Patterson function is 6.72% of the height of the origin peak. No significant pseudotranslation is detected.*

¹Intensities estimated from amplitudes.

²Theoretical values of $\langle |L| \rangle$, $\langle L^2 \rangle$ for acentric reflections are 0.5, 0.333 respectively for untwinned datasets, and 0.375, 0.2 for perfectly twinned datasets.

5 Model quality

5.1 Standard geometry

Bond lengths and bond angles in the following residue types are not validated in this section: HIG

The Z score for a bond length (or angle) is the number of standard deviations the observed value is removed from the expected value. A bond length (or angle) with $|Z| > 5$ is considered an outlier worth inspection. RMSZ is the root-mean-square of all Z scores of the bond lengths (or angles).

Mol	Chain	Bond lengths		Bond angles	
		RMSZ	$\# Z > 5$	RMSZ	$\# Z > 5$
1	A	0.44	0/2061	0.63	0/2773
1	B	0.43	0/1959	0.64	0/2637
All	All	0.44	0/4020	0.63	0/5410

There are no bond length outliers.

There are no bond angle outliers.

There are no chirality outliers.

There are no planarity outliers.

5.2 Too-close contacts

In the following table, the Non-H and H(model) columns list the number of non-hydrogen atoms and hydrogen atoms in the chain respectively. The H(added) column lists the number of hydrogen atoms added and optimized by MolProbity. The Clashes column lists the number of clashes within the asymmetric unit, whereas Symm-Clashes lists symmetry related clashes.

Mol	Chain	Non-H	H(model)	H(added)	Clashes	Symm-Clashes
1	A	2014	0	2071	10	0
1	B	1918	0	1966	12	0
2	A	33	0	25	1	0
2	B	33	0	25	3	0
3	A	59	0	0	0	0
3	B	34	0	0	0	0
All	All	4091	0	4087	22	0

The all-atom clashscore is defined as the number of clashes found per 1000 atoms (including hydrogen atoms). The all-atom clashscore for this structure is 3.

All (22) close contacts within the same asymmetric unit are listed below, sorted by their clash

magnitude.

Atom-1	Atom-2	Interatomic distance (Å)	Clash overlap (Å)
1:A:293:VAL:HG22	1:A:322:VAL:HG11	1.75	0.68
1:B:467:PRO:HB2	1:B:468:LEU:HA	1.79	0.63
1:A:261:LYS:H	1:A:262:ILE:HA	1.65	0.61
1:B:325:ILE:HD12	1:B:388:ILE:HG23	1.92	0.52
1:B:293:VAL:HG22	1:B:322:VAL:HG21	1.92	0.51
1:A:325:ILE:HD11	1:A:392:ILE:HG13	1.94	0.49
1:A:465:LEU:HB3	1:A:469:LEU:HB3	1.95	0.49
1:B:321:GLY:O	1:B:325:ILE:HG12	2.13	0.49
1:A:281:ILE:HG12	2:A:1:HIG:H25	1.97	0.47
1:B:300:ALA:HA	1:B:303:ILE:HD12	2.00	0.44
1:A:220:ASP:O	1:A:224:LYS:HG3	2.18	0.43
1:B:364:MET:CE	2:B:1:HIG:H6A	2.48	0.43
1:A:251:ASP:HB3	1:A:254:SER:H	1.84	0.43
1:B:318:LEU:HA	1:B:318:LEU:HD12	1.96	0.42
1:B:377:LEU:HD11	1:B:438:LYS:HD3	2.00	0.42
1:B:326:ILE:CG2	2:B:1:HIG:H19	2.50	0.41
1:A:320:TYR:HB2	1:A:397:ARG:HD2	2.02	0.41
1:B:226:PHE:HA	1:B:227:PRO:HD3	1.99	0.41
1:A:379:LEU:HD11	1:A:435:LEU:HD13	2.02	0.41
1:B:425:HIS:HB3	1:B:428:SER:HB3	2.03	0.41
1:A:466:HIS:CD2	1:A:468:LEU:H	2.39	0.40
1:B:288:ARG:HG3	2:B:1:HIG:H20B	2.03	0.40

There are no symmetry-related clashes.

5.3 Torsion angles ⓘ

5.3.1 Protein backbone ⓘ

In the following table, the Percentiles column shows the percent Ramachandran outliers of the chain as a percentile score with respect to all X-ray entries followed by that with respect to entries of similar resolution.

The Analysed column shows the number of residues for which the backbone conformation was analysed, and the total number of residues.

Mol	Chain	Analysed	Favoured	Allowed	Outliers	Percentiles	
1	A	248/282 (88%)	237 (96%)	9 (4%)	2 (1%)	22	31
1	B	233/282 (83%)	225 (97%)	7 (3%)	1 (0%)	38	52
All	All	481/564 (85%)	462 (96%)	16 (3%)	3 (1%)	28	40

All (3) Ramachandran outliers are listed below:

Mol	Chain	Res	Type
1	A	462	ASP
1	A	461	THR
1	B	227	PRO

5.3.2 Protein sidechains ⓘ

In the following table, the Percentiles column shows the percent sidechain outliers of the chain as a percentile score with respect to all X-ray entries followed by that with respect to entries of similar resolution.

The Analysed column shows the number of residues for which the sidechain conformation was analysed, and the total number of residues.

Mol	Chain	Analysed	Rotameric	Outliers	Percentiles	
1	A	227/253 (90%)	214 (94%)	13 (6%)	24	37
1	B	214/253 (85%)	199 (93%)	15 (7%)	18	27
All	All	441/506 (87%)	413 (94%)	28 (6%)	20	32

All (28) residues with a non-rotameric sidechain are listed below:

Mol	Chain	Res	Type
1	A	251	ASP
1	A	252	MET
1	A	255	LEU
1	A	279	ILE
1	A	288	ARG
1	A	322	VAL
1	A	357	ARG
1	A	363	PHE
1	A	443	ARG
1	A	445	ILE
1	A	452	LEU
1	A	453	LEU
1	A	469	LEU
1	B	228	LEU
1	B	252	MET
1	B	255	LEU
1	B	256	MET
1	B	311	LEU
1	B	318	LEU
1	B	330	LEU

Continued on next page...

Continued from previous page...

Mol	Chain	Res	Type
1	B	341	ILE
1	B	343	GLU
1	B	363	PHE
1	B	412	ASN
1	B	427	GLU
1	B	430	GLN
1	B	451	GLN
1	B	475	ASP

Some sidechains can be flipped to improve hydrogen bonding and reduce clashes. All (10) such sidechains are listed below:

Mol	Chain	Res	Type
1	A	294	GLN
1	A	308	ASN
1	A	375	ASN
1	A	437	GLN
1	A	444	GLN
1	A	451	GLN
1	A	466	HIS
1	A	470	GLN
1	B	410	GLN
1	B	451	GLN

5.3.3 RNA [i](#)

There are no RNA molecules in this entry.

5.4 Non-standard residues in protein, DNA, RNA chains [i](#)

There are no non-standard protein/DNA/RNA residues in this entry.

5.5 Carbohydrates [i](#)

There are no carbohydrates in this entry.

5.6 Ligand geometry [i](#)

2 ligands are modelled in this entry.

In the following table, the Counts columns list the number of bonds (or angles) for which Mogul statistics could be retrieved, the number of bonds (or angles) that are observed in the model and the number of bonds (or angles) that are defined in the chemical component dictionary. The Link column lists molecule types, if any, to which the group is linked. The Z score for a bond length (or angle) is the number of standard deviations the observed value is removed from the expected value. A bond length (or angle) with $|Z| > 2$ is considered an outlier worth inspection. RMSZ is the root-mean-square of all Z scores of the bond lengths (or angles).

Mol	Type	Chain	Res	Link	Bond lengths			Bond angles		
					Counts	RMSZ	$\# Z > 2$	Counts	RMSZ	$\# Z > 2$
2	HIG	A	1	-	36,38,38	2.15	9 (25%)	42,56,56	2.10	8 (19%)
2	HIG	B	1	-	36,38,38	2.02	10 (27%)	42,56,56	1.94	9 (21%)

In the following table, the Chirals column lists the number of chiral outliers, the number of chiral centers analysed, the number of these observed in the model and the number defined in the chemical component dictionary. Similar counts are reported in the Torsion and Rings columns. '-' means no outliers of that kind were identified.

Mol	Type	Chain	Res	Link	Chirals	Torsions	Rings
2	HIG	A	1	-	-	0/10/23/23	0/6/6/6
2	HIG	B	1	-	-	0/10/23/23	0/6/6/6

All (19) bond length outliers are listed below:

Mol	Chain	Res	Type	Atoms	Z	Observed(Å)	Ideal(Å)
2	B	1	HIG	C7-N9	-3.34	1.34	1.38
2	B	1	HIG	C5-C2	-2.03	1.48	1.51
2	B	1	HIG	C3-N8	2.07	1.39	1.35
2	B	1	HIG	C26-N30	2.09	1.36	1.33
2	A	1	HIG	C13-C11	2.15	1.54	1.51
2	A	1	HIG	C12-C18	2.16	1.42	1.38
2	B	1	HIG	C28-C25	2.18	1.43	1.38
2	A	1	HIG	C19-C15	2.45	1.43	1.38
2	A	1	HIG	C26-N30	2.48	1.36	1.33
2	A	1	HIG	C15-N8	2.68	1.38	1.33
2	B	1	HIG	C15-N8	2.81	1.39	1.33
2	A	1	HIG	N30-N33	2.85	1.39	1.34
2	B	1	HIG	C19-C14	3.22	1.42	1.37
2	A	1	HIG	N29-N32	3.50	1.40	1.34
2	B	1	HIG	N29-N32	3.62	1.40	1.34
2	B	1	HIG	N30-N33	3.64	1.40	1.34
2	A	1	HIG	C19-C14	3.77	1.43	1.37
2	B	1	HIG	C10-C4	6.41	1.53	1.49
2	A	1	HIG	C10-C4	7.90	1.54	1.49

All (17) bond angle outliers are listed below:

Mol	Chain	Res	Type	Atoms	Z	Observed(°)	Ideal(°)
2	A	1	HIG	C2-N1-C3	-4.47	117.73	126.86
2	A	1	HIG	C3-C7-N9	-4.35	105.39	109.47
2	B	1	HIG	C2-N1-C3	-3.51	119.69	126.86
2	B	1	HIG	C19-C15-N8	-3.06	118.83	122.61
2	B	1	HIG	C3-C7-N9	-2.58	107.05	109.47
2	A	1	HIG	C27-C24-C26	-2.13	115.16	118.59
2	B	1	HIG	N29-C26-N30	-2.08	108.59	111.31
2	A	1	HIG	C25-C23-C24	-2.01	116.58	118.66
2	B	1	HIG	C27-C24-C23	2.31	121.06	118.66
2	B	1	HIG	C26-N29-N32	2.33	107.33	104.93
2	B	1	HIG	C15-N8-C3	2.40	120.92	117.68
2	A	1	HIG	C10-C4-N9	2.99	127.74	124.06
2	A	1	HIG	C20-C14-C7	3.13	123.36	120.08
2	A	1	HIG	C27-C24-C23	3.23	122.01	118.66
2	B	1	HIG	C24-C26-N30	3.50	128.91	124.17
2	B	1	HIG	C4-N1-C2	8.01	131.93	125.50
2	A	1	HIG	C4-N1-C2	8.72	132.50	125.50

There are no chirality outliers.

There are no torsion outliers.

There are no ring outliers.

2 monomers are involved in 4 short contacts:

Mol	Chain	Res	Type	Clashes	Symm-Clashes
2	A	1	HIG	1	0
2	B	1	HIG	3	0

5.7 Other polymers [i](#)

There are no such residues in this entry.

5.8 Polymer linkage issues [i](#)

There are no chain breaks in this entry.

6 Fit of model and data

6.1 Protein, DNA and RNA chains

In the following table, the column labelled ‘#RSRZ > 2’ contains the number (and percentage) of RSRZ outliers, followed by percent RSRZ outliers for the chain as percentile scores relative to all X-ray entries and entries of similar resolution. The OWAB column contains the minimum, median, 95th percentile and maximum values of the occupancy-weighted average B-factor per residue. The column labelled ‘Q < 0.9’ lists the number of (and percentage) of residues with an average occupancy less than 0.9.

Mol	Chain	Analysed	<RSRZ>	#RSRZ>2	OWAB(Å ²)	Q<0.9
1	A	251/282 (89%)	0.57	28 (11%) 6 5	48, 72, 115, 141	0
1	B	239/282 (84%)	0.39	19 (7%) 13 12	43, 67, 112, 131	0
All	All	490/564 (86%)	0.48	47 (9%) 9 7	43, 69, 113, 141	0

All (47) RSRZ outliers are listed below:

Mol	Chain	Res	Type	RSRZ
1	A	465	LEU	6.2
1	B	466	HIS	5.9
1	B	360	PHE	5.8
1	B	277	VAL	5.6
1	A	456	ILE	4.8
1	A	402[A]	ASN	4.8
1	A	360	PHE	4.6
1	A	398	PRO	4.2
1	A	357	ARG	4.1
1	B	206	GLY	4.0
1	B	361	GLY	4.0
1	B	451	GLN	3.9
1	A	257	MET	3.7
1	B	363	PHE	3.7
1	A	464	SER	3.6
1	B	240	LYS	3.5
1	A	261	LYS	3.4
1	B	283[A]	GLN	3.3
1	B	256	MET	3.3
1	B	454	GLN	3.3
1	A	401	LEU	3.2
1	A	362	ASP	3.2
1	A	463	MET	3.1
1	A	423	LEU	3.1

Continued on next page...

Continued from previous page...

Mol	Chain	Res	Type	RSRZ
1	A	454	GLN	3.1
1	B	235	ALA	2.9
1	B	207	GLU	2.8
1	A	452	LEU	2.8
1	B	453	LEU	2.8
1	B	279	ILE	2.7
1	A	277	VAL	2.6
1	B	427	GLU	2.6
1	A	311	LEU	2.5
1	A	358	LYS	2.5
1	A	388	ILE	2.4
1	B	255	LEU	2.4
1	A	359	PRO	2.3
1	A	422	LYS	2.3
1	A	320	TYR	2.3
1	B	355	SER	2.3
1	A	461	THR	2.2
1	A	427[A]	GLU	2.1
1	A	361	GLY	2.1
1	B	452	LEU	2.1
1	A	363	PHE	2.0
1	A	209	ALA	2.0
1	A	419	LEU	2.0

6.2 Non-standard residues in protein, DNA, RNA chains [i](#)

There are no non-standard protein/DNA/RNA residues in this entry.

6.3 Carbohydrates [i](#)

There are no carbohydrates in this entry.

6.4 Ligands [i](#)

In the following table, the Atoms column lists the number of modelled atoms in the group and the number defined in the chemical component dictionary. LLDF column lists the quality of electron density of the group with respect to its neighbouring residues in protein, DNA or RNA chains. The B-factors column lists the minimum, median, 95th percentile and maximum values of B factors of atoms in the group. The column labelled 'Q < 0.9' lists the number of atoms with occupancy less than 0.9.

Mol	Type	Chain	Res	Atoms	RSCC	RSR	LLDF	B-factors(\AA^2)	Q<0.9
2	HIG	A	1	33/33	0.91	0.18	0.17	62,70,79,79	0
2	HIG	B	1	33/33	0.88	0.18	-0.00	75,87,102,103	0

6.5 Other polymers [i](#)

There are no such residues in this entry.