



Full wwPDB X-ray Structure Validation Report ⓘ

Nov 21, 2017 – 10:16 AM EST

PDB ID : 1RAF
Title : CRYSTAL STRUCTURE OF CTP-LIGATED T STATE ASPARTATE
TRANSCARBAMOYLASE AT 2.5 ANGSTROMS RESOLUTION: IMPLI-
CATIONS FOR ATCASE MUTANTS AND THE MECHANISM OF NEGA-
TIVE COOPERATIVITY
Authors : Kosman, R.P.; Gouaux, J.E.; Lipscomb, W.N.
Deposited on : unknown
Resolution : 2.50 Å(reported)

This is a Full wwPDB X-ray Structure Validation Report for a publicly released PDB entry.

We welcome your comments at validation@mail.wwpdb.org

A user guide is available at

<http://wwpdb.org/validation/2016/XrayValidationReportHelp>

with specific help available everywhere you see the ⓘ symbol.

The following versions of software and data (see [references ⓘ](#)) were used in the production of this report:

MolProbity : 4.02b-467
Mogul : 1.7.2 (RC1), CSD as538be (2017)
Xtriage (Phenix) : **NOT EXECUTED**
EDS : **NOT EXECUTED**
Percentile statistics : 20161228.v01 (using entries in the PDB archive December 28th 2016)
Ideal geometry (proteins) : Engh & Huber (2001)
Ideal geometry (DNA, RNA) : Parkinson et al. (1996)
Validation Pipeline (wwPDB-VP) : rb-20030345

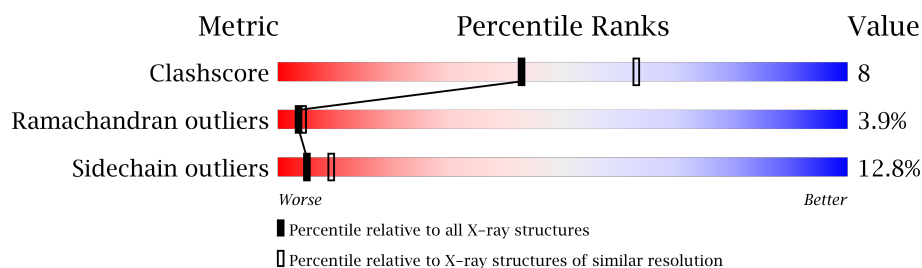
1 Overall quality at a glance

The following experimental techniques were used to determine the structure:

X-RAY DIFFRACTION

The reported resolution of this entry is 2.50 Å.





Percentile scores (ranging between 0-100) for global validation metrics of the entry are shown in the following graphic. The table shows the number of entries on which the scores are based.



Metric	Whole archive (#Entries)	Similar resolution (#Entries, resolution range(Å))
Clashscore	112137	4554 (2.50-2.50)
Ramachandran outliers	110173	4463 (2.50-2.50)
Sidechain outliers	110143	4465 (2.50-2.50)

The table below summarises the geometric issues observed across the polymeric chains and their fit to the electron density. The red, orange, yellow and green segments on the lower bar indicate the fraction of residues that contain outliers for ≥ 3 , 2, 1 and 0 types of geometric quality criteria. A grey segment represents the fraction of residues that are not modelled. The numeric value for each fraction is indicated below the corresponding segment, with a dot representing fractions $\leq 5\%$. The upper red bar (where present) indicates the fraction of residues that have poor fit to the electron density. The numeric value is given above the bar.

Note EDS was not executed.

Mol	Chain	Length	Quality of chain
1	A	310	
1	C	310	
2	B	153	
2	D	153	

2 Entry composition [i](#)

There are 5 unique types of molecules in this entry. The entry contains 7375 atoms, of which 0 are hydrogens and 0 are deuteriums.

In the tables below, the ZeroOcc column contains the number of atoms modelled with zero occupancy, the AltConf column contains the number of residues with at least one atom in alternate conformation and the Trace column contains the number of residues modelled with at most 2 atoms.

- Molecule 1 is a protein called Aspartate carbamoyltransferase catalytic chain.

Mol	Chain	Residues	Atoms					ZeroOcc	AltConf	Trace
1	A	310	Total	C	N	O	S	0	0	0
			2415	1527	423	456	9			
1	C	310	Total	C	N	O	S	0	0	0
			2415	1527	423	456	9			

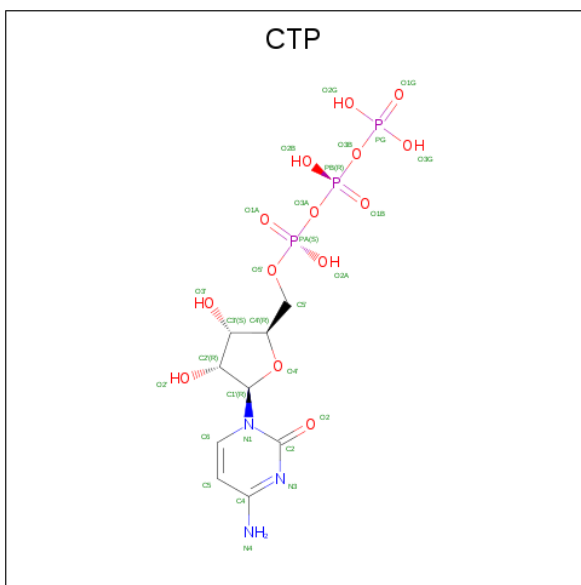
- Molecule 2 is a protein called Aspartate carbamoyltransferase regulatory chain.

Mol	Chain	Residues	Atoms					ZeroOcc	AltConf	Trace
2	B	153	Total	C	N	O	S	0	0	0
			1196	749	212	229	6			
2	D	153	Total	C	N	O	S	0	0	0
			1196	749	212	229	6			

- Molecule 3 is ZINC ION (three-letter code: ZN) (formula: Zn).

Mol	Chain	Residues	Atoms		ZeroOcc	AltConf
3	B	1	Total	Zn	0	0
			1	1		
3	D	1	Total	Zn	0	0
			1	1		

- Molecule 4 is CYTIDINE-5'-TRIPHOSPHATE (three-letter code: CTP) (formula: C₉H₁₆N₃O₁₄P₃).



Mol	Chain	Residues	Atoms					ZeroOcc	AltConf
4	B	1	Total 29	C 9	N 3	O 14	P 3	0	0
4	D	1	Total 29	C 9	N 3	O 14	P 3	0	0

- Molecule 5 is water.

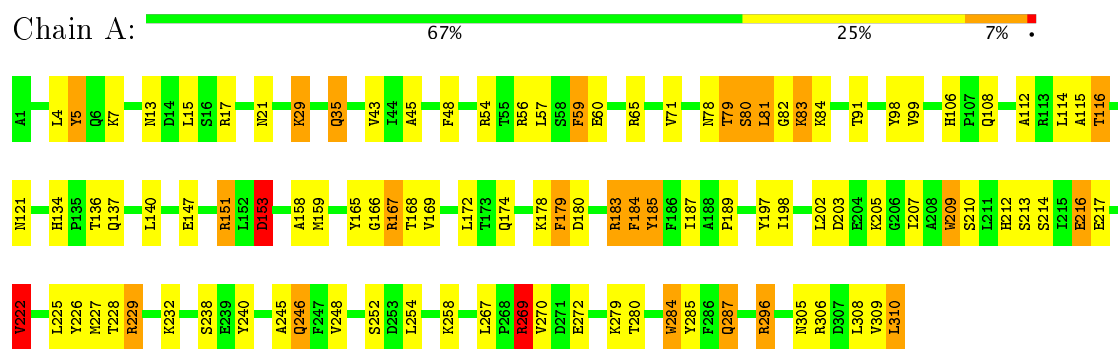
Mol	Chain	Residues	Atoms	ZeroOcc	AltConf
5	A	29	Total O 29 29	0	0
5	B	11	Total O 11 11	0	0
5	C	44	Total O 44 44	0	0
5	D	9	Total O 9 9	0	0

3 Residue-property plots

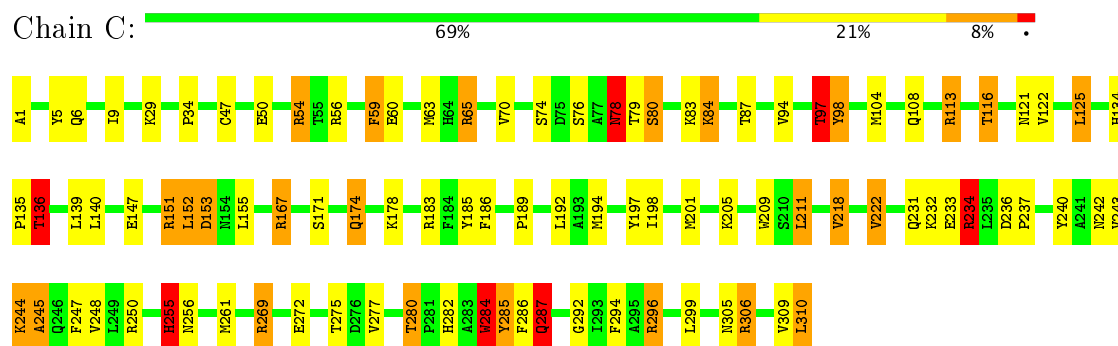
These plots are drawn for all protein, RNA and DNA chains in the entry. The first graphic for a chain summarises the proportions of the various outlier classes displayed in the second graphic. The second graphic shows the sequence view annotated by issues in geometry and electron density. Residues are color-coded according to the number of geometric quality criteria for which they contain at least one outlier: green = 0, yellow = 1, orange = 2 and red = 3 or more. A red dot above a residue indicates a poor fit to the electron density ($RSRZ > 2$). Stretches of 2 or more consecutive residues without any outlier are shown as a green connector. Residues present in the sample, but not in the model, are shown in grey.

Note EDS was not executed.

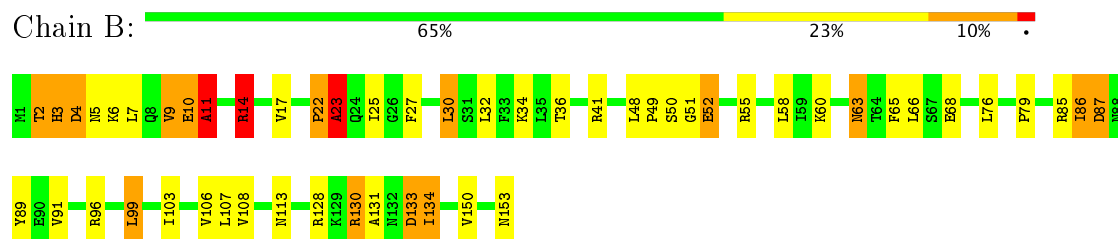
- Molecule 1: Aspartate carbamoyltransferase catalytic chain



- Molecule 1: Aspartate carbamoyltransferase catalytic chain

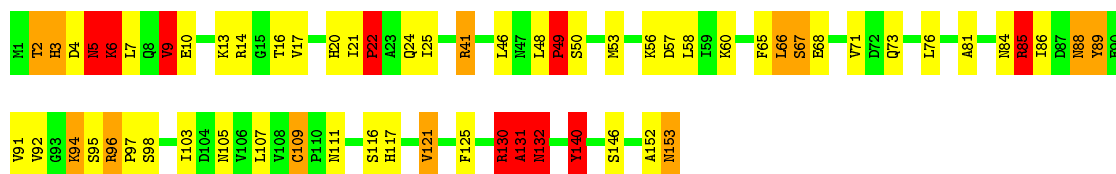


- Molecule 2: Aspartate carbamoyltransferase regulatory chain



- Molecule 2: Aspartate carbamoyltransferase regulatory chain

Chain D:



4 Data and refinement statistics

Xtriage (Phenix) and EDS were not executed - this section is therefore incomplete.

Property	Value	Source
Space group	P 3 2 1	Depositor
Cell constants a, b, c, α , β , γ	122.13Å 122.13Å 142.51Å 90.00° 90.00° 120.00°	Depositor
Resolution (Å)	(Not available) – 2.50	Depositor
% Data completeness (in resolution range)	(Not available) ((Not available)-2.50)	Depositor
R_{merge}	(Not available)	Depositor
R_{sym}	(Not available)	Depositor
Refinement program	X-PLOR	Depositor
R, R_{free}	0.188 , (Not available)	Depositor
Estimated twinning fraction	No twinning to report.	Xtriage
Total number of atoms	7375	wwPDB-VP
Average B, all atoms (Å ²)	25.0	wwPDB-VP

5 Model quality

5.1 Standard geometry

Bond lengths and bond angles in the following residue types are not validated in this section: ZN, CTP

The Z score for a bond length (or angle) is the number of standard deviations the observed value is removed from the expected value. A bond length (or angle) with $|Z| > 5$ is considered an outlier worth inspection. RMSZ is the root-mean-square of all Z scores of the bond lengths (or angles).

Mol	Chain	Bond lengths		Bond angles	
		RMSZ	$\# Z > 5$	RMSZ	$\# Z > 5$
1	A	0.96	2/2461 (0.1%)	1.74	43/3339 (1.3%)
1	C	1.01	3/2461 (0.1%)	1.82	56/3339 (1.7%)
2	B	0.88	0/1214	1.73	17/1640 (1.0%)
2	D	0.90	0/1214	1.79	28/1640 (1.7%)
All	All	0.96	5/7350 (0.1%)	1.77	144/9958 (1.4%)

Chiral center outliers are detected by calculating the chiral volume of a chiral center and verifying if the center is modelled as a planar moiety or with the opposite hand. A planarity outlier is detected by checking planarity of atoms in a peptide group, atoms in a mainchain group or atoms of a sidechain that are expected to be planar.

Mol	Chain	#Chirality outliers	#Planarity outliers
1	A	0	7
1	C	0	5
2	B	0	1
2	D	0	2
All	All	0	15

All (5) bond length outliers are listed below:

Mol	Chain	Res	Type	Atoms	Z	Observed(Å)	Ideal(Å)
1	C	147	GLU	CD-OE1	8.06	1.34	1.25
1	A	147	GLU	CD-OE2	7.19	1.33	1.25
1	A	60	GLU	CD-OE2	7.01	1.33	1.25
1	C	56	ARG	CA-CB	-5.18	1.42	1.53
1	C	60	GLU	CD-OE2	5.00	1.31	1.25

All (144) bond angle outliers are listed below:

Mol	Chain	Res	Type	Atoms	Z	Observed(°)	Ideal(°)
1	A	269	ARG	NE-CZ-NH1	15.85	128.23	120.30
1	C	296	ARG	NE-CZ-NH1	15.83	128.22	120.30
1	C	269	ARG	NE-CZ-NH2	-14.01	113.30	120.30
1	C	269	ARG	NE-CZ-NH1	13.76	127.18	120.30
1	A	56	ARG	NE-CZ-NH2	-11.69	114.45	120.30
1	A	65	ARG	NE-CZ-NH1	11.12	125.86	120.30
1	C	56	ARG	NE-CZ-NH2	-10.29	115.16	120.30
1	C	209	TRP	CD1-CG-CD2	9.92	114.24	106.30
1	A	269	ARG	NE-CZ-NH2	-9.38	115.61	120.30
2	D	2	THR	CA-C-N	-8.63	98.22	117.20
1	A	209	TRP	CD1-CG-CD2	8.58	113.17	106.30
1	C	209	TRP	CE2-CD2-CG	-8.42	100.56	107.30
2	D	121	VAL	CA-CB-CG2	-8.39	98.32	110.90
1	C	183	ARG	NE-CZ-NH1	8.35	124.47	120.30
2	B	11	ALA	N-CA-C	8.19	133.11	111.00
2	B	52	GLU	CA-C-N	-7.98	99.64	117.20
1	C	296	ARG	NE-CZ-NH2	-7.89	116.35	120.30
1	C	97	THR	N-CA-CB	-7.85	95.39	110.30
2	D	140	TYR	CB-CG-CD1	-7.67	116.40	121.00
1	C	65	ARG	NE-CZ-NH2	-7.64	116.48	120.30
1	C	54	ARG	CA-CB-CG	7.46	129.82	113.40
1	C	222	VAL	CA-CB-CG2	-7.37	99.84	110.90
1	A	284	TRP	CE2-CD2-CG	-7.29	101.47	107.30
1	C	284	TRP	CD1-CG-CD2	7.29	112.13	106.30
1	A	209	TRP	CE2-CD2-CG	-7.23	101.51	107.30
1	A	284	TRP	CD1-CG-CD2	7.17	112.04	106.30
2	D	66	LEU	CA-CB-CG	7.14	131.72	115.30
1	A	296	ARG	NE-CZ-NH1	7.07	123.84	120.30
2	B	66	LEU	CA-CB-CG	7.06	131.54	115.30
1	C	244	LYS	CA-C-N	7.02	132.64	117.20
1	A	43	VAL	CG1-CB-CG2	-7.01	99.68	110.90
1	C	113	ARG	NE-CZ-NH1	7.01	123.81	120.30
1	C	284	TRP	CE2-CD2-CG	-6.89	101.79	107.30
2	D	88	ASN	N-CA-C	-6.86	92.47	111.00
2	D	130	ARG	NE-CZ-NH2	-6.85	116.87	120.30
1	C	209	TRP	CG-CD1-NE1	-6.80	103.30	110.10
1	C	284	TRP	CB-CG-CD1	-6.79	118.17	127.00
1	A	79	THR	N-CA-CB	-6.68	97.61	110.30
2	B	23	ALA	N-CA-CB	6.67	119.44	110.10
1	C	285	TYR	CB-CG-CD1	-6.66	117.01	121.00
1	C	218	VAL	CA-CB-CG2	-6.63	100.95	110.90
2	B	133	ASP	N-CA-C	6.54	128.66	111.00
1	C	183	ARG	NE-CZ-NH2	-6.51	117.05	120.30

Continued on next page...

Continued from previous page...

Mol	Chain	Res	Type	Atoms	Z	Observed(°)	Ideal(°)
2	D	131	ALA	CA-C-N	-6.50	102.91	117.20
2	D	96	ARG	NE-CZ-NH1	6.49	123.55	120.30
2	D	3	HIS	N-CA-C	-6.43	93.63	111.00
1	A	258	LYS	CB-CG-CD	-6.36	95.07	111.60
1	C	113	ARG	NE-CZ-NH2	-6.36	117.12	120.30
2	D	49	PRO	CA-C-N	-6.33	103.28	117.20
1	A	35	GLN	CA-CB-CG	-6.31	99.52	113.40
1	A	222	VAL	N-CA-CB	-6.29	97.65	111.50
1	C	222	VAL	CA-CB-CG1	6.26	120.28	110.90
1	A	81	LEU	CA-C-N	-6.24	103.72	116.20
1	C	125	LEU	CA-CB-CG	6.23	129.63	115.30
2	B	5	ASN	CA-CB-CG	6.23	127.10	113.40
1	C	78	ASN	N-CA-C	6.21	127.78	111.00
1	C	234	ARG	NE-CZ-NH1	6.18	123.39	120.30
1	C	284	TRP	CG-CD2-CE3	6.17	139.46	133.90
2	B	130	ARG	NE-CZ-NH2	-6.17	117.22	120.30
1	A	5	TYR	CB-CG-CD1	-6.13	117.32	121.00
1	C	287	GLN	CG-CD-NE2	6.13	131.40	116.70
1	C	174	GLN	CA-CB-CG	-6.11	99.96	113.40
1	C	309	VAL	CA-C-N	-6.10	103.77	117.20
2	D	14	ARG	NE-CZ-NH1	6.10	123.35	120.30
2	D	89	TYR	N-CA-C	6.07	127.38	111.00
1	A	229	ARG	NE-CZ-NH2	-6.06	117.27	120.30
1	A	56	ARG	NE-CZ-NH1	6.05	123.32	120.30
2	B	108	VAL	CG1-CB-CG2	-6.04	101.23	110.90
2	B	52	GLU	N-CA-C	6.03	127.29	111.00
1	C	233	GLU	CA-CB-CG	6.03	126.67	113.40
2	B	133	ASP	CA-C-N	-5.99	104.03	117.20
2	B	106	VAL	N-CA-CB	-5.95	98.42	111.50
1	C	5	TYR	CB-CG-CD2	-5.93	117.44	121.00
2	D	41	ARG	NE-CZ-NH1	5.90	123.25	120.30
2	B	30	LEU	CA-CB-CG	5.89	128.84	115.30
1	A	167	ARG	NE-CZ-NH2	-5.88	117.36	120.30
1	C	275	THR	CA-CB-OG1	-5.87	96.67	109.00
1	A	229	ARG	NE-CZ-NH1	5.85	123.22	120.30
1	C	136	THR	N-CA-CB	-5.83	99.23	110.30
2	D	109	CYS	CA-CB-SG	-5.82	103.52	114.00
1	A	183	ARG	NE-CZ-NH1	5.80	123.20	120.30
2	D	132	ASN	N-CA-C	-5.78	95.40	111.00
1	C	116	THR	N-CA-CB	-5.75	99.38	110.30
1	C	80	SER	N-CA-C	5.75	126.51	111.00
1	C	151	ARG	CG-CD-NE	-5.74	99.75	111.80

Continued on next page...

Continued from previous page...

Mol	Chain	Res	Type	Atoms	Z	Observed(°)	Ideal(°)
2	D	105	ASN	CB-CA-C	-5.73	98.94	110.40
2	D	85	ARG	NE-CZ-NH1	5.71	123.15	120.30
1	A	197	TYR	CA-CB-CG	5.65	124.13	113.40
2	D	9	VAL	N-CA-C	5.62	126.19	111.00
2	D	94	LYS	N-CA-C	-5.60	95.87	111.00
1	A	84	LYS	N-CA-C	-5.55	96.01	111.00
1	A	140	LEU	CA-CB-CG	5.55	128.06	115.30
1	A	116	THR	N-CA-CB	-5.55	99.76	110.30
1	A	153	ASP	CB-CA-C	-5.54	99.31	110.40
1	C	280	THR	N-CA-CB	-5.53	99.79	110.30
1	C	287	GLN	OE1-CD-NE2	-5.52	109.21	121.90
1	A	216	GLU	CA-CB-CG	5.49	125.48	113.40
2	D	9	VAL	CA-C-N	-5.48	105.15	117.20
1	A	209	TRP	CG-CD1-NE1	-5.45	104.65	110.10
1	C	56	ARG	CG-CD-NE	-5.45	100.36	111.80
1	C	275	THR	CA-CB-CG2	5.44	120.02	112.40
1	C	87	THR	O-C-N	-5.43	114.01	122.70
2	D	121	VAL	CA-CB-CG1	5.43	119.04	110.90
2	D	25	ILE	CG1-CB-CG2	-5.42	99.47	111.40
2	B	58	LEU	CA-CB-CG	5.42	127.76	115.30
1	A	227	MET	CA-CB-CG	5.41	122.50	113.30
2	B	23	ALA	CB-CA-C	-5.41	101.98	110.10
1	A	57	LEU	CB-CG-CD1	-5.40	101.83	111.00
1	A	17	ARG	NE-CZ-NH2	-5.39	117.61	120.30
1	A	246	GLN	CA-C-N	-5.38	105.36	117.20
1	A	279	LYS	CA-CB-CG	-5.37	101.59	113.40
1	C	108	GLN	CA-CB-CG	-5.34	101.66	113.40
2	B	34	LYS	CA-CB-CG	5.33	125.13	113.40
2	D	50	SER	N-CA-C	-5.31	96.65	111.00
1	A	54	ARG	NE-CZ-NH1	-5.30	117.65	120.30
1	C	56	ARG	CB-CG-CD	-5.29	97.85	111.60
1	C	306	ARG	CA-CB-CG	5.28	125.01	113.40
1	A	80	SER	N-CA-C	5.25	125.19	111.00
1	A	71	VAL	CA-C-N	5.25	126.70	116.20
2	D	3	HIS	CA-C-N	-5.25	105.65	117.20
1	C	140	LEU	CA-CB-CG	5.22	127.30	115.30
1	C	284	TRP	CG-CD1-NE1	-5.22	104.88	110.10
1	C	167	ARG	NE-CZ-NH2	-5.21	117.69	120.30
1	C	248	VAL	CG1-CB-CG2	-5.20	102.59	110.90
1	C	197	TYR	CA-CB-CG	5.18	123.24	113.40
1	C	247	PHE	N-CA-C	-5.16	97.07	111.00
2	B	130	ARG	NE-CZ-NH1	5.16	122.88	120.30

Continued on next page...

Continued from previous page...

Mol	Chain	Res	Type	Atoms	Z	Observed(°)	Ideal(°)
2	D	22	PRO	N-CA-C	5.15	125.50	112.10
1	A	179	PHE	O-C-N	-5.15	114.46	122.70
1	A	189	PRO	CA-C-N	5.14	128.51	117.20
2	D	9	VAL	CB-CA-C	-5.13	101.65	111.40
1	A	165	TYR	CA-C-N	5.13	126.46	116.20
2	D	58	LEU	CB-CG-CD1	-5.12	102.30	111.00
1	C	122	VAL	N-CA-C	-5.10	97.24	111.00
1	A	29	LYS	CB-CG-CD	-5.09	98.38	111.60
2	D	6	LYS	O-C-N	5.06	130.80	122.70
1	C	309	VAL	O-C-N	5.06	130.79	122.70
2	B	10	GLU	CA-C-N	-5.06	106.08	117.20
1	A	203	ASP	CB-CG-OD2	-5.05	113.75	118.30
1	A	153	ASP	CB-CG-OD2	-5.05	113.76	118.30
1	A	269	ARG	CA-CB-CG	5.05	124.51	113.40
1	C	56	ARG	NE-CZ-NH1	5.03	122.82	120.30
1	C	178	LYS	CA-CB-CG	-5.01	102.38	113.40
1	C	250	ARG	CA-CB-CG	5.00	124.41	113.40

There are no chirality outliers.

All (15) planarity outliers are listed below:

Mol	Chain	Res	Type	Group
1	A	184	PHE	Sidechain
1	A	185	TYR	Sidechain
1	A	226	TYR	Sidechain
1	A	240	TYR	Sidechain
1	A	48	PHE	Sidechain
1	A	59	PHE	Sidechain
1	A	98	TYR	Sidechain
2	B	89	TYR	Sidechain
1	C	185	TYR	Sidechain
1	C	255	HIS	Sidechain
1	C	286	PHE	Sidechain
1	C	294	PHE	Sidechain
1	C	98	TYR	Sidechain
2	D	140	TYR	Sidechain
2	D	48	LEU	Peptide

5.2 Too-close contacts ⓘ

In the following table, the Non-H and H(model) columns list the number of non-hydrogen atoms and hydrogen atoms in the chain respectively. The H(added) column lists the number of hydrogen atoms added and optimized by MolProbity. The Clashes column lists the number of clashes within the asymmetric unit, whereas Symm-Clashes lists symmetry related clashes.

Mol	Chain	Non-H	H(model)	H(added)	Clashes	Symm-Clashes
1	A	2415	0	2422	33	0
1	C	2415	0	2422	35	0
2	B	1196	0	1212	23	0
2	D	1196	0	1212	28	0
3	B	1	0	0	0	0
3	D	1	0	0	0	0
4	B	29	0	12	1	0
4	D	29	0	12	0	0
5	A	29	0	0	0	0
5	B	11	0	0	0	0
5	C	44	0	0	2	0
5	D	9	0	0	1	0
All	All	7375	0	7292	114	0

The all-atom clashscore is defined as the number of clashes found per 1000 atoms (including hydrogen atoms). The all-atom clashscore for this structure is 8.

All (114) close contacts within the same asymmetric unit are listed below, sorted by their clash magnitude.

Atom-1	Atom-2	Interatomic distance (Å)	Clash overlap (Å)
2:B:4:ASP:HA	2:B:10:GLU:HB2	1.56	0.87
1:A:308:LEU:HG	1:A:310:LEU:HD22	1.58	0.86
1:A:81:LEU:HD13	1:A:91:THR:HG23	1.57	0.84
1:A:205:LYS:HB2	1:A:207:ILE:HD12	1.58	0.84
1:A:45:ALA:HB2	1:A:99:VAL:HG11	1.61	0.83
1:A:29:LYS:HD3	1:A:310:LEU:HG	1.62	0.81
2:D:6:LYS:HB2	2:D:9:VAL:HG13	1.63	0.80
1:A:106:HIS:HD2	1:A:108:GLN:H	1.31	0.78
2:D:5:ASN:ND2	2:D:6:LYS:HD2	2.00	0.76
1:C:136:THR:CG2	1:C:296:ARG:HH11	2.03	0.71
1:A:153:ASP:HB3	1:A:180:ASP:O	1.91	0.71
1:C:186:PHE:HB2	1:C:211:LEU:HD12	1.74	0.69
2:B:76:LEU:HD12	2:B:103:ILE:HD11	1.76	0.68
2:B:17:VAL:HG22	2:B:60:LYS:HG2	1.74	0.68
2:B:6:LYS:HE2	2:D:41:ARG:HD2	1.78	0.66

Continued on next page...

Continued from previous page...

Atom-1	Atom-2	Interatomic distance (Å)	Clash overlap (Å)
1:C:292:GLY:O	1:C:296:ARG:HG3	1.96	0.65
1:C:113:ARG:O	1:C:116:THR:HB	1.98	0.64
1:C:97:THR:HG22	1:C:98:TYR:CD2	2.31	0.64
2:D:6:LYS:HG3	2:D:9:VAL:HG22	1.79	0.62
2:D:20:HIS:HA	2:D:56:LYS:HD2	1.83	0.61
1:C:284:TRP:HA	1:C:287:GLN:HE21	1.65	0.61
1:C:97:THR:HG22	1:C:98:TYR:HD2	1.65	0.61
1:A:158:ALA:HB2	1:A:222:VAL:HG21	1.82	0.60
1:C:136:THR:HG23	1:C:296:ARG:HD3	1.83	0.60
2:D:152:ALA:O	2:D:153:ASN:HB2	2.00	0.60
1:A:151:ARG:HD2	1:A:153:ASP:O	2.02	0.59
1:C:284:TRP:HA	1:C:287:GLN:NE2	2.18	0.59
2:B:14:ARG:NH1	2:B:63:ASN:HA	2.18	0.58
1:C:280:THR:HG22	1:C:282:HIS:H	1.69	0.57
1:C:174:GLN:HG3	1:C:201:MET:HE2	1.86	0.57
1:A:15:LEU:O	1:A:178:LYS:HE2	2.04	0.57
2:B:22:PRO:HB2	2:B:25:ILE:HD13	1.85	0.57
2:D:76:LEU:HD22	2:D:103:ILE:HD13	1.85	0.57
1:C:242:ASN:O	1:C:244:LYS:N	2.38	0.56
1:C:9:ILE:HG21	1:C:299:LEU:HD21	1.88	0.56
1:A:284:TRP:HA	1:A:287:GLN:NE2	2.21	0.56
2:B:6:LYS:HA	2:B:9:VAL:HG22	1.88	0.56
1:C:94:VAL:O	1:C:97:THR:HB	2.06	0.56
1:A:287:GLN:H	1:A:287:GLN:NE2	2.04	0.55
2:D:67:SER:HA	2:D:71:VAL:HG23	1.89	0.55
1:C:277:VAL:O	1:C:280:THR:HB	2.07	0.55
1:A:214:SER:O	1:A:217:GLU:HB2	2.07	0.55
2:D:21:ILE:HB	2:D:57:ASP:HB2	1.89	0.54
1:C:136:THR:HB	5:C:317:HOH:O	2.07	0.54
2:D:17:VAL:HG22	2:D:60:LYS:HG2	1.90	0.54
1:A:4:LEU:HD23	1:A:7:LYS:HD3	1.89	0.54
2:B:76:LEU:HD12	2:B:103:ILE:CD1	2.37	0.53
2:B:86:ILE:HG13	2:B:91:VAL:HA	1.90	0.53
1:A:254:LEU:HD12	1:A:280:THR:HG21	1.91	0.52
1:C:50:GLU:HA	1:C:76:SER:OG	2.09	0.52
1:A:136:THR:HB	1:A:296:ARG:HH11	1.75	0.52
1:A:21:ASN:HD21	1:A:179:PHE:HE1	1.57	0.52
1:C:231:GLN:HB2	1:C:234:ARG:HG3	1.92	0.52
1:C:136:THR:CG2	1:C:296:ARG:HD3	2.39	0.51
1:A:267:LEU:CD2	1:A:269:ARG:HG3	2.41	0.51
2:D:20:HIS:O	2:D:20:HIS:ND1	2.44	0.51

Continued on next page...

Continued from previous page...

Atom-1	Atom-2	Interatomic distance (Å)	Clash overlap (Å)
2:B:107:LEU:HD22	2:B:150:VAL:HG12	1.94	0.50
1:C:136:THR:HG23	1:C:296:ARG:HH11	1.72	0.50
2:B:11:ALA:HA	4:B:999:CTP:N3	2.28	0.49
2:D:121:VAL:HG21	2:D:140:TYR:CZ	2.48	0.49
2:B:48:LEU:O	2:B:55:ARG:HA	2.13	0.48
1:A:187:ILE:HG13	1:A:212:HIS:HB2	1.95	0.48
2:B:65:PHE:CE1	2:B:85:ARG:HG3	2.48	0.48
2:D:131:ALA:O	2:D:132:ASN:HB2	2.14	0.47
1:A:248:VAL:HG12	1:A:272:GLU:HA	1.96	0.47
1:A:287:GLN:H	1:A:287:GLN:HE21	1.60	0.47
2:D:65:PHE:HB3	2:D:85:ARG:HH22	1.80	0.47
2:B:27:PHE:HA	2:B:30:LEU:HD23	1.97	0.46
2:D:5:ASN:HD22	2:D:6:LYS:H	1.63	0.46
1:A:108:GLN:HG2	2:B:113:ASN:OD1	2.15	0.46
1:A:5:TYR:CZ	1:A:306:ARG:HG2	2.51	0.46
2:D:111:ASN:O	2:D:117:HIS:HE1	1.99	0.46
1:C:135:PRO:O	1:C:139:LEU:HG	2.16	0.46
2:B:41:ARG:HE	2:D:49:PRO:HD2	1.80	0.46
2:D:13:LYS:O	2:D:86:ILE:HG22	2.16	0.45
2:D:53:MET:HB3	5:D:1007:HOH:O	2.16	0.45
1:A:198:ILE:O	1:A:202:LEU:HG	2.16	0.45
2:D:81:ALA:O	2:D:97:PRO:HD2	2.16	0.45
1:C:59:PHE:CE2	1:C:136:THR:HG21	2.52	0.45
1:A:137:GLN:HG2	1:A:168:THR:HG22	1.99	0.44
2:B:6:LYS:HB3	2:D:10:GLU:HG3	2.00	0.44
1:A:112:ALA:O	1:A:115:ALA:HB3	2.17	0.44
2:B:23:ALA:O	2:B:25:ILE:HD12	2.18	0.44
1:C:1:ALA:HA	1:C:306:ARG:O	2.18	0.43
1:A:5:TYR:CD1	1:A:306:ARG:HA	2.54	0.43
1:A:82:GLY:O	1:A:83:LYS:HB3	2.18	0.43
1:C:272:GLU:H	1:C:272:GLU:CD	2.21	0.43
2:B:14:ARG:HB2	2:B:87:ASP:HA	1.99	0.43
1:C:47:CYS:O	1:C:104:MET:HA	2.18	0.43
1:C:232:LYS:HA	1:C:240:TYR:CD2	2.53	0.42
2:B:14:ARG:HA	2:B:86:ILE:O	2.18	0.42
1:C:189:PRO:HG2	1:C:192:LEU:HB2	2.02	0.42
1:C:83:LYS:O	1:C:84:LYS:HB2	2.20	0.42
1:C:63:MET:SD	1:C:70:VAL:HG22	2.60	0.42
2:B:6:LYS:HE2	2:D:41:ARG:CD	2.48	0.41
2:D:109:CYS:HA	2:D:125:PHE:HZ	1.85	0.41
2:D:130:ARG:HA	2:D:130:ARG:HD3	1.59	0.41

Continued on next page...

Continued from previous page...

Atom-1	Atom-2	Interatomic distance (Å)	Clash overlap (Å)
2:B:99:LEU:HD23	2:B:130:ARG:HH11	1.84	0.41
2:D:116:SER:HA	2:D:121:VAL:HG11	2.03	0.41
1:A:172:LEU:HA	1:A:172:LEU:HD12	1.88	0.41
1:C:261:MET:O	1:C:282:HIS:HD2	2.04	0.41
2:B:14:ARG:NH1	2:B:65:PHE:CE2	2.89	0.41
1:C:194:MET:SD	1:C:198:ILE:HG21	2.61	0.41
1:A:166:GLY:O	1:A:169:VAL:HG22	2.21	0.41
1:C:240:TYR:O	1:C:245:ALA:HB2	2.21	0.41
1:C:29:LYS:HE2	1:C:310:LEU:HD13	2.03	0.41
2:D:111:ASN:O	2:D:117:HIS:CE1	2.73	0.41
2:D:92:VAL:O	2:D:92:VAL:HG13	2.21	0.41
1:C:152:LEU:HA	1:C:155:LEU:HD11	2.03	0.40
1:A:185:TYR:HD1	1:A:212:HIS:NE2	2.19	0.40
1:A:184:PHE:O	1:A:209:TRP:HA	2.20	0.40
1:A:4:LEU:HA	1:A:7:LYS:HD3	2.04	0.40
1:C:153:ASP:HB3	5:C:341:HOH:O	2.21	0.40
2:D:84:ASN:OD1	2:D:94:LYS:HG2	2.22	0.40

There are no symmetry-related clashes.

5.3 Torsion angles [i](#)

5.3.1 Protein backbone [i](#)

In the following table, the Percentiles column shows the percent Ramachandran outliers of the chain as a percentile score with respect to all X-ray entries followed by that with respect to entries of similar resolution.

The Analysed column shows the number of residues for which the backbone conformation was analysed, and the total number of residues.

Mol	Chain	Analysed	Favoured	Allowed	Outliers	Percentiles	
1	A	308/310 (99%)	288 (94%)	13 (4%)	7 (2%)	7	11
1	C	308/310 (99%)	283 (92%)	19 (6%)	6 (2%)	9	15
2	B	151/153 (99%)	120 (80%)	19 (13%)	12 (8%)	1	1
2	D	151/153 (99%)	124 (82%)	16 (11%)	11 (7%)	1	1
All	All	918/926 (99%)	815 (89%)	67 (7%)	36 (4%)	3	4

All (36) Ramachandran outliers are listed below:

Mol	Chain	Res	Type
1	A	80	SER
1	A	245	ALA
1	A	270	VAL
2	B	3	HIS
2	B	11	ALA
2	B	14	ARG
2	B	23	ALA
2	B	52	GLU
2	B	68	GLU
2	B	133	ASP
2	B	134	ILE
1	C	78	ASN
1	C	80	SER
1	C	243	VAL
2	D	4	ASP
2	D	7	LEU
2	D	22	PRO
2	D	89	TYR
2	D	107	LEU
2	D	132	ASN
1	A	79	THR
2	B	51	GLY
2	B	131	ALA
1	C	255	HIS
2	D	5	ASN
2	D	24	GLN
1	A	83	LYS
1	A	116	THR
1	A	246	GLN
1	C	84	LYS
2	D	68	GLU
2	D	131	ALA
2	B	50	SER
1	C	245	ALA
2	B	2	THR
2	D	91	VAL

5.3.2 Protein sidechains ⓘ

In the following table, the Percentiles column shows the percent sidechain outliers of the chain as a percentile score with respect to all X-ray entries followed by that with respect to entries of similar resolution.

The Analysed column shows the number of residues for which the sidechain conformation was

analysed, and the total number of residues.

Mol	Chain	Analysed	Rotameric	Outliers	Percentiles	
1	A	261/261 (100%)	232 (89%)	29 (11%)	7	13
1	C	261/261 (100%)	228 (87%)	33 (13%)	5	10
2	B	136/137 (99%)	117 (86%)	19 (14%)	4	7
2	D	136/137 (99%)	115 (85%)	21 (15%)	3	5
All	All	794/796 (100%)	692 (87%)	102 (13%)	5	9

All (102) residues with a non-rotameric sidechain are listed below:

Mol	Chain	Res	Type
1	A	13	ASN
1	A	35	GLN
1	A	59	PHE
1	A	78	ASN
1	A	114	LEU
1	A	121	ASN
1	A	134	HIS
1	A	151	ARG
1	A	153	ASP
1	A	159	MET
1	A	167	ARG
1	A	174	GLN
1	A	183	ARG
1	A	210	SER
1	A	213	SER
1	A	216	GLU
1	A	222	VAL
1	A	225	LEU
1	A	228	THR
1	A	229	ARG
1	A	232	LYS
1	A	238	SER
1	A	252	SER
1	A	269	ARG
1	A	285	TYR
1	A	287	GLN
1	A	305	ASN
1	A	309	VAL
1	A	310	LEU
2	B	2	THR
2	B	3	HIS

Continued on next page...

Continued from previous page...

Mol	Chain	Res	Type
2	B	4	ASP
2	B	7	LEU
2	B	9	VAL
2	B	14	ARG
2	B	22	PRO
2	B	32	LEU
2	B	36	THR
2	B	49	PRO
2	B	63	ASN
2	B	79	PRO
2	B	86	ILE
2	B	87	ASP
2	B	96	ARG
2	B	99	LEU
2	B	128	ARG
2	B	134	ILE
2	B	153	ASN
1	C	6	GLN
1	C	34	PRO
1	C	54	ARG
1	C	59	PHE
1	C	65	ARG
1	C	74	SER
1	C	78	ASN
1	C	79	THR
1	C	97	THR
1	C	121	ASN
1	C	125	LEU
1	C	134	HIS
1	C	136	THR
1	C	151	ARG
1	C	152	LEU
1	C	153	ASP
1	C	167	ARG
1	C	171	SER
1	C	205	LYS
1	C	211	LEU
1	C	218	VAL
1	C	222	VAL
1	C	234	ARG
1	C	236	ASP
1	C	237	PRO

Continued on next page...

Continued from previous page...

Mol	Chain	Res	Type
1	C	255	HIS
1	C	256	ASN
1	C	269	ARG
1	C	284	TRP
1	C	285	TYR
1	C	287	GLN
1	C	305	ASN
1	C	310	LEU
2	D	2	THR
2	D	3	HIS
2	D	5	ASN
2	D	6	LYS
2	D	9	VAL
2	D	16	THR
2	D	22	PRO
2	D	46	LEU
2	D	49	PRO
2	D	66	LEU
2	D	67	SER
2	D	73	GLN
2	D	85	ARG
2	D	88	ASN
2	D	95	SER
2	D	96	ARG
2	D	98	SER
2	D	130	ARG
2	D	132	ASN
2	D	146	SER
2	D	153	ASN

Some sidechains can be flipped to improve hydrogen bonding and reduce clashes. All (15) such sidechains are listed below:

Mol	Chain	Res	Type
1	A	13	ASN
1	A	106	HIS
1	A	282	HIS
1	A	287	GLN
2	B	147	HIS
2	B	148	ASN
1	C	35	GLN
1	C	149	GLN
1	C	174	GLN

Continued on next page...

Continued from previous page...

Mol	Chain	Res	Type
1	C	260	ASN
1	C	287	GLN
2	D	5	ASN
2	D	24	GLN
2	D	73	GLN
2	D	117	HIS

5.3.3 RNA ⓘ

There are no RNA molecules in this entry.

5.4 Non-standard residues in protein, DNA, RNA chains ⓘ

There are no non-standard protein/DNA/RNA residues in this entry.

5.5 Carbohydrates ⓘ

There are no carbohydrates in this entry.

5.6 Ligand geometry ⓘ

Of 4 ligands modelled in this entry, 2 are monoatomic - leaving 2 for Mogul analysis.

In the following table, the Counts columns list the number of bonds (or angles) for which Mogul statistics could be retrieved, the number of bonds (or angles) that are observed in the model and the number of bonds (or angles) that are defined in the Chemical Component Dictionary. The Link column lists molecule types, if any, to which the group is linked. The Z score for a bond length (or angle) is the number of standard deviations the observed value is removed from the expected value. A bond length (or angle) with $|Z| > 2$ is considered an outlier worth inspection. RMSZ is the root-mean-square of all Z scores of the bond lengths (or angles).

Mol	Type	Chain	Res	Link	Bond lengths			Bond angles		
					Counts	RMSZ	$\# Z > 2$	Counts	RMSZ	$\# Z > 2$
4	CTP	B	999	-	24,30,30	1.64	7 (29%)	24,47,47	1.44	4 (16%)
4	CTP	D	999	-	24,30,30	1.52	4 (16%)	24,47,47	1.24	3 (12%)

In the following table, the Chirals column lists the number of chiral outliers, the number of chiral centers analysed, the number of these observed in the model and the number defined in the Chemical Component Dictionary. Similar counts are reported in the Torsion and Rings columns. '-' means no outliers of that kind were identified.

Mol	Type	Chain	Res	Link	Chirals	Torsions	Rings
4	CTP	B	999	-	-	0/18/38/38	0/2/2/2
4	CTP	D	999	-	-	0/18/38/38	0/2/2/2

All (11) bond length outliers are listed below:

Mol	Chain	Res	Type	Atoms	Z	Observed(Å)	Ideal(Å)
4	B	999	CTP	C2-N3	-3.35	1.31	1.38
4	B	999	CTP	C6-N1	-2.61	1.32	1.35
4	D	999	CTP	C2-N3	-2.47	1.33	1.38
4	B	999	CTP	C4-N3	-2.43	1.31	1.35
4	B	999	CTP	C2'-C1'	-2.27	1.50	1.53
4	D	999	CTP	C6-N1	-2.05	1.33	1.35
4	B	999	CTP	PB-O1B	2.07	1.58	1.50
4	B	999	CTP	PG-O1G	2.18	1.58	1.50
4	D	999	CTP	PG-O1G	2.45	1.59	1.50
4	B	999	CTP	PG-O3B	3.71	1.66	1.60
4	D	999	CTP	PG-O3B	3.93	1.66	1.60

All (7) bond angle outliers are listed below:

Mol	Chain	Res	Type	Atoms	Z	Observed(°)	Ideal(°)
4	B	999	CTP	C6-N1-C2	-3.46	115.68	121.28
4	B	999	CTP	C4'-O4'-C1'	-3.32	106.24	109.77
4	D	999	CTP	C6-N1-C2	-3.19	116.12	121.28
4	D	999	CTP	O2'-C2'-C1'	-2.50	103.78	111.61
4	B	999	CTP	O2'-C2'-C1'	-2.28	104.49	111.61
4	B	999	CTP	O4'-C1'-N1	2.08	112.24	108.08
4	D	999	CTP	O4'-C1'-N1	2.32	112.73	108.08

There are no chirality outliers.

There are no torsion outliers.

There are no ring outliers.

1 monomer is involved in 1 short contact:

Mol	Chain	Res	Type	Clashes	Symm-Clashes
4	B	999	CTP	1	0

5.7 Other polymers ⓘ

There are no such residues in this entry.

5.8 Polymer linkage issues ⓘ

There are no chain breaks in this entry.

6 Fit of model and data ⓘ

6.1 Protein, DNA and RNA chains ⓘ

EDS was not executed - this section is therefore empty.

6.2 Non-standard residues in protein, DNA, RNA chains ⓘ

EDS was not executed - this section is therefore empty.

6.3 Carbohydrates ⓘ

EDS was not executed - this section is therefore empty.

6.4 Ligands ⓘ

EDS was not executed - this section is therefore empty.

6.5 Other polymers ⓘ

EDS was not executed - this section is therefore empty.