



wwPDB X-ray Structure Validation Summary Report ⓘ

Jan 23, 2018 – 10:31 PM EST

PDB ID : 1RER
Title : Crystal structure of the homotrimer of fusion glycoprotein E1 from Semliki Forest Virus.
Authors : Gibbons, D.L.; Vaney, M.C.; Roussel, A.; Vigouroux, A.; Reilly, B.; Kielian, M.; Rey, F.A.
Deposited on : 2003-11-07
Resolution : 3.20 Å(reported)

This is a wwPDB X-ray Structure Validation Summary Report for a publicly released PDB entry.

We welcome your comments at validation@mail.wwpdb.org

A user guide is available at

<http://wwpdb.org/validation/2016/XrayValidationReportHelp>

with specific help available everywhere you see the ⓘ symbol.

The following versions of software and data (see [references ⓘ](#)) were used in the production of this report:

MolProbity	:	4.02b-467
Mogul	:	1.7.2 (RC1), CSD as538be (2017)
Xtriage (Phenix)	:	1.9-1692
EDS	:	rb-20030736
Percentile statistics	:	20161228.v01 (using entries in the PDB archive December 28th 2016)
Refmac	:	5.8.0135
CCP4	:	6.5.0
Ideal geometry (proteins)	:	Engh & Huber (2001)
Ideal geometry (DNA, RNA)	:	Parkinson et al. (1996)
Validation Pipeline (wwPDB-VP)	:	rb-20030736

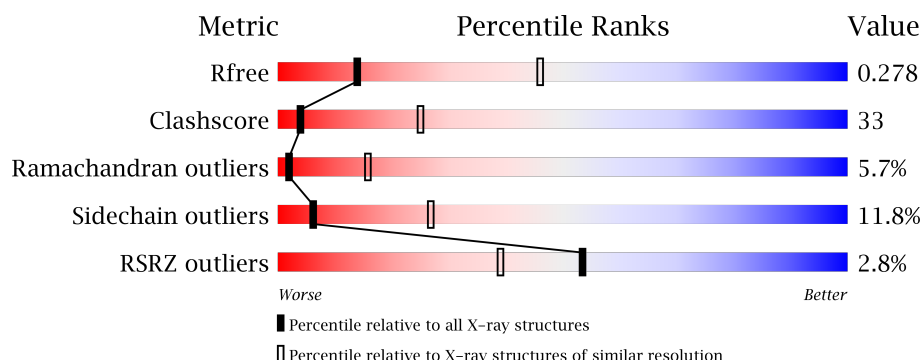
1 Overall quality at a glance ⓘ

The following experimental techniques were used to determine the structure:

X-RAY DIFFRACTION

The reported resolution of this entry is 3.20 Å.

Percentile scores (ranging between 0-100) for global validation metrics of the entry are shown in the following graphic. The table shows the number of entries on which the scores are based.



Metric	Whole archive (#Entries)	Similar resolution (#Entries, resolution range(Å))
R_{free}	100719	1015 (3.22-3.18)
Clashscore	112137	1009 (3.20-3.20)
Ramachandran outliers	110173	1118 (3.22-3.18)
Sidechain outliers	110143	1117 (3.22-3.18)
RSRZ outliers	101464	1020 (3.22-3.18)

The table below summarises the geometric issues observed across the polymeric chains and their fit to the electron density. The red, orange, yellow and green segments on the lower bar indicate the fraction of residues that contain outliers for ≥ 3 , 2, 1 and 0 types of geometric quality criteria. A grey segment represents the fraction of residues that are not modelled. The numeric value for each fraction is indicated below the corresponding segment, with a dot representing fractions $\leq 5\%$. The upper red bar (where present) indicates the fraction of residues that have poor fit to the electron density. The numeric value is given above the bar.

Mol	Chain	Length	Quality of chain
1	A	391	<div> <div>2%</div> <div> <div></div> <div>51%</div> <div>39%</div> <div>9%</div> </div> </div>
1	B	391	<div> <div>5%</div> <div> <div></div> <div>49%</div> <div>41%</div> <div>9%</div> </div> </div>
1	C	391	<div> <div>2%</div> <div> <div></div> <div>53%</div> <div>39%</div> <div>7%</div> </div> </div>

The following table lists non-polymeric compounds, carbohydrate monomers and non-standard residues in protein, DNA, RNA chains that are outliers for geometric or electron-density-fit criteria:

Mol	Type	Chain	Res	Chirality	Geometry	Clashes	Electron density
8	FUC	B	402	X	-	-	-

2 Entry composition [i](#)

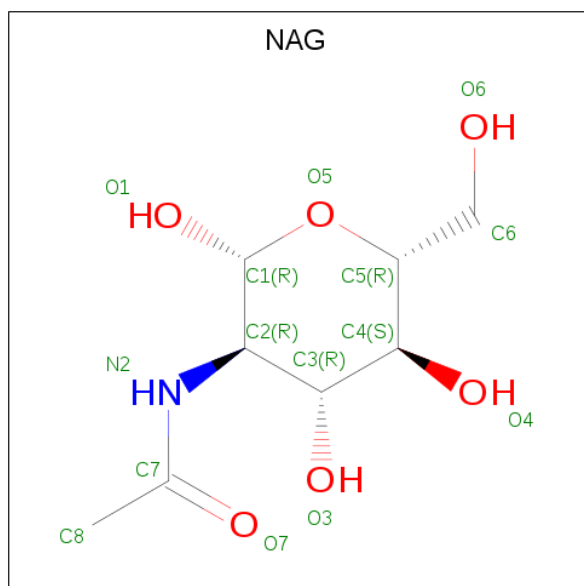
There are 11 unique types of molecules in this entry. The entry contains 9317 atoms, of which 0 are hydrogens and 0 are deuteriums.

In the tables below, the ZeroOcc column contains the number of atoms modelled with zero occupancy, the AltConf column contains the number of residues with at least one atom in alternate conformation and the Trace column contains the number of residues modelled with at most 2 atoms.

- Molecule 1 is a protein called Structural polyprotein.

Mol	Chain	Residues	Atoms					ZeroOcc	AltConf	Trace
1	A	391	Total	C	N	O	S	0	0	0
			2993	1891	501	578	23			
1	B	391	Total	C	N	O	S	0	0	0
			2993	1891	501	578	23			
1	C	391	Total	C	N	O	S	0	0	0
			2993	1891	501	578	23			

- Molecule 2 is N-ACETYL-D-GLUCOSAMINE (three-letter code: NAG) (formula: $C_8H_{15}NO_6$).



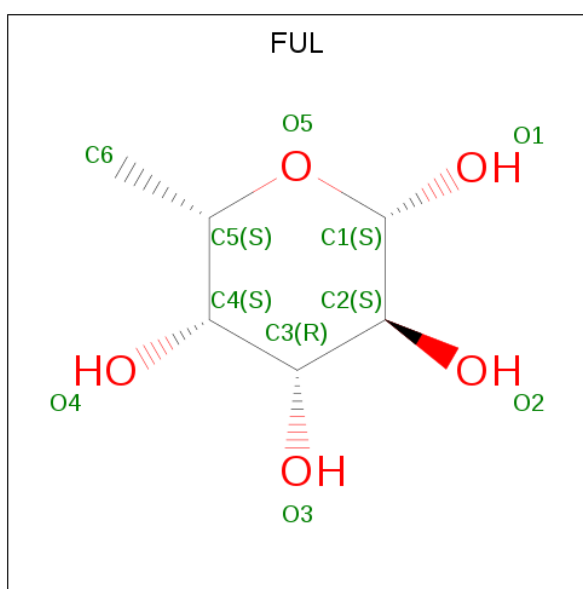
Mol	Chain	Residues	Atoms				ZeroOcc	AltConf
2	A	1	Total	C	N	O	0	0
			14	8	1	5		
2	A	1	Total	C	N	O	0	0
			14	8	1	5		
2	A	1	Total	C	N	O	0	0
			14	8	1	5		

Continued on next page...

Continued from previous page...

Mol	Chain	Residues	Atoms				ZeroOcc	AltConf
2	B	1	Total	C	N	O	0	0
			14	8	1	5		
2	B	1	Total	C	N	O	0	0
			14	8	1	5		
2	C	1	Total	C	N	O	0	0
			14	8	1	5		
2	C	1	Total	C	N	O	0	0
			14	8	1	5		

- Molecule 3 is BETA-L-FUCOSE (three-letter code: FUL) (formula: $C_6H_{12}O_5$).



Mol	Chain	Residues	Atoms			ZeroOcc	AltConf
3	A	1	Total	C	O	0	0
			10	6	4		

- Molecule 4 is BETA-D-MANNOSE (three-letter code: BMA) (formula: $C_6H_{12}O_6$).



Mol	Chain	Residues	Atoms			ZeroOcc	AltConf
4	A	1	Total	C	O	0	0
			11	6	5		
4	A	1	Total	C	O	0	0
			11	6	5		
4	B	1	Total	C	O	0	0
			11	6	5		

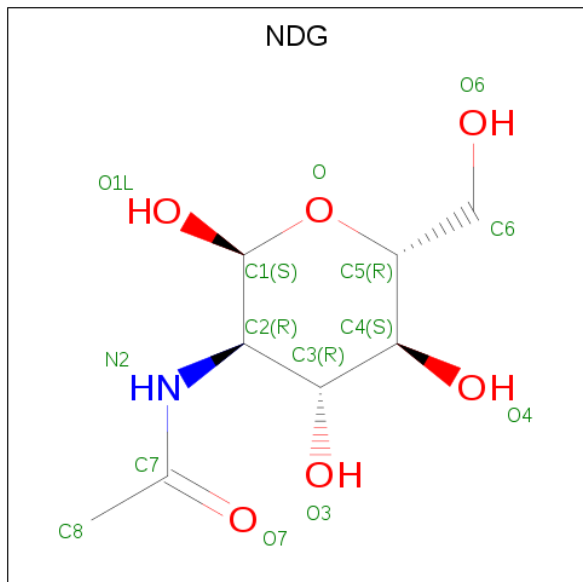
- Molecule 5 is BROMIDE ION (three-letter code: BR) (formula: Br).

Mol	Chain	Residues	Atoms		ZeroOcc	AltConf
5	B	1	Total	Br	0	0
			1	1		
5	A	1	Total	Br	0	0
			1	1		
5	C	1	Total	Br	0	0
			1	1		

- Molecule 6 is HOLMIUM ATOM (three-letter code: HO) (formula: Ho).

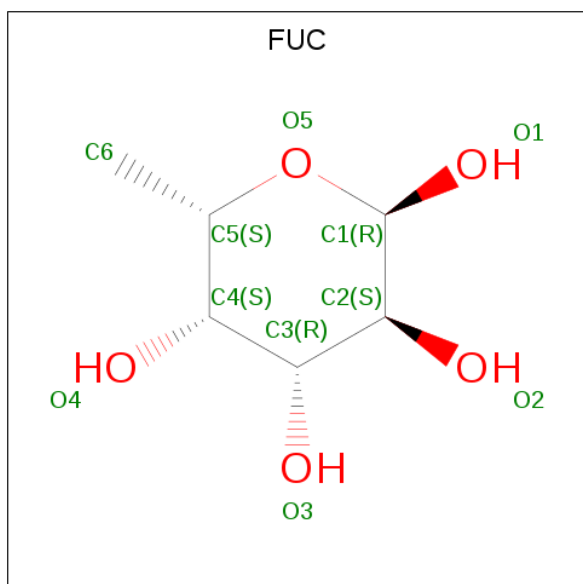
Mol	Chain	Residues	Atoms		ZeroOcc	AltConf
6	B	1	Total	Ho	0	0
			1	1		
6	A	2	Total	Ho	0	0
			2	2		
6	C	1	Total	Ho	0	0
			1	1		

- Molecule 7 is 2-(ACETYLAMINO)-2-DEOXY-A-D-GLUCOPYRANOSE (three-letter code: NDG) (formula: $C_8H_{15}NO_6$).



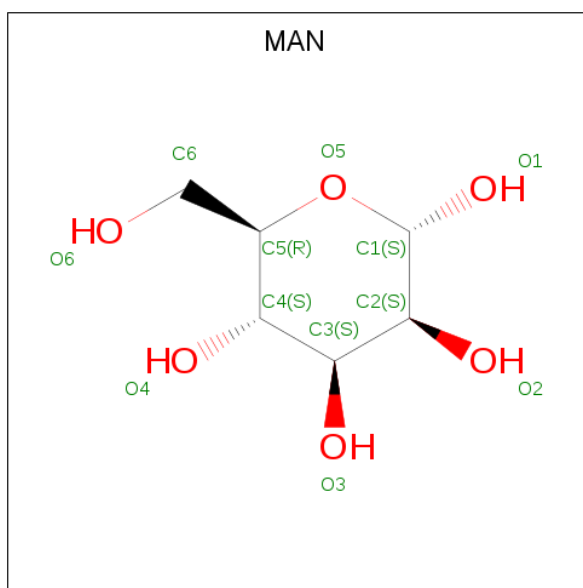
Mol	Chain	Residues	Atoms				ZeroOcc	AltConf
7	B	1	Total	C	N	O	0	0
			14	8	1	5		

- Molecule 8 is ALPHA-L-FUCOSE (three-letter code: FUC) (formula: $C_6H_{12}O_5$).



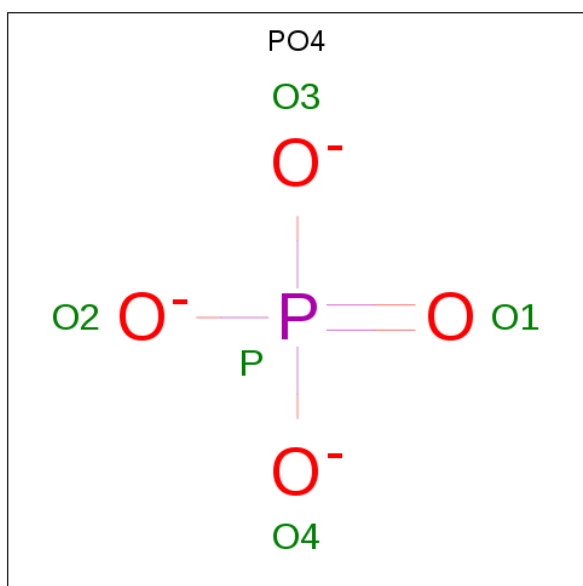
Mol	Chain	Residues	Atoms			ZeroOcc	AltConf
8	B	1	Total	C	O	0	0
			10	6	4		

- Molecule 9 is ALPHA-D-MANNOSE (three-letter code: MAN) (formula: $C_6H_{12}O_6$).



Mol	Chain	Residues	Atoms			ZeroOcc	AltConf
9	B	1	Total	C	O	0	0
			11	6	5		
9	B	1	Total	C	O	0	0
			11	6	5		

- Molecule 10 is PHOSPHATE ION (three-letter code: PO4) (formula: O_4P).



Mol	Chain	Residues	Atoms			ZeroOcc	AltConf
10	B	1	Total	O	P	0	0
			5	4	1		

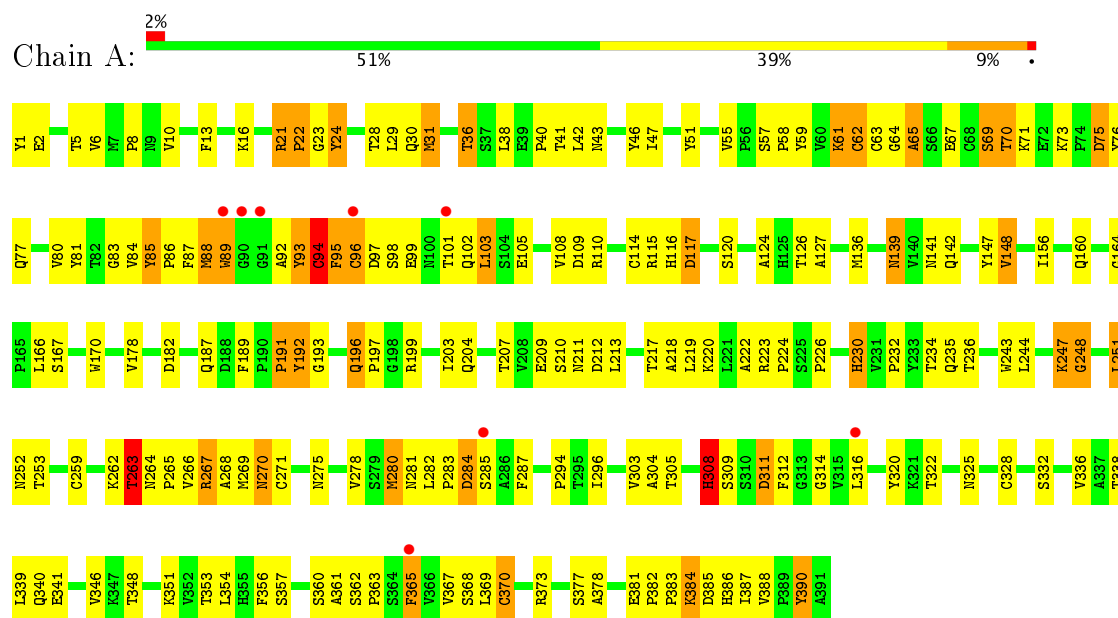
- Molecule 11 is water.

Mol	Chain	Residues	Atoms		ZeroOcc	AltConf
11	A	54	Total 54	O 54	0	0
11	B	46	Total 46	O 46	0	0
11	C	39	Total 39	O 39	0	0

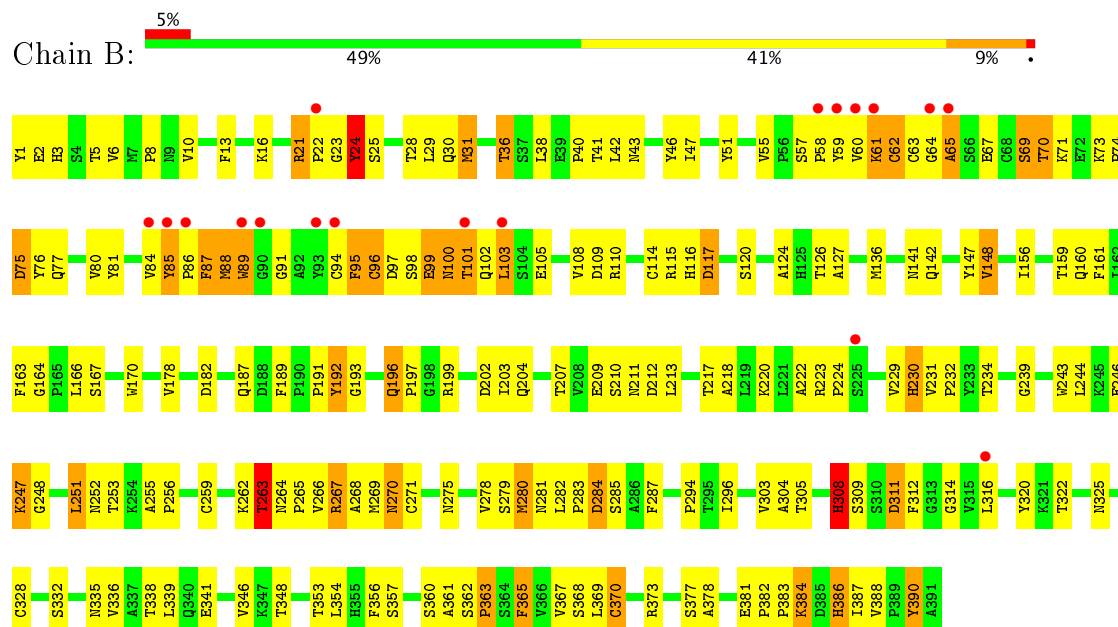
3 Residue-property plots [i](#)

These plots are drawn for all protein, RNA and DNA chains in the entry. The first graphic for a chain summarises the proportions of the various outlier classes displayed in the second graphic. The second graphic shows the sequence view annotated by issues in geometry and electron density. Residues are color-coded according to the number of geometric quality criteria for which they contain at least one outlier: green = 0, yellow = 1, orange = 2 and red = 3 or more. A red dot above a residue indicates a poor fit to the electron density ($RSRZ > 2$). Stretches of 2 or more consecutive residues without any outlier are shown as a green connector. Residues present in the sample, but not in the model, are shown in grey.

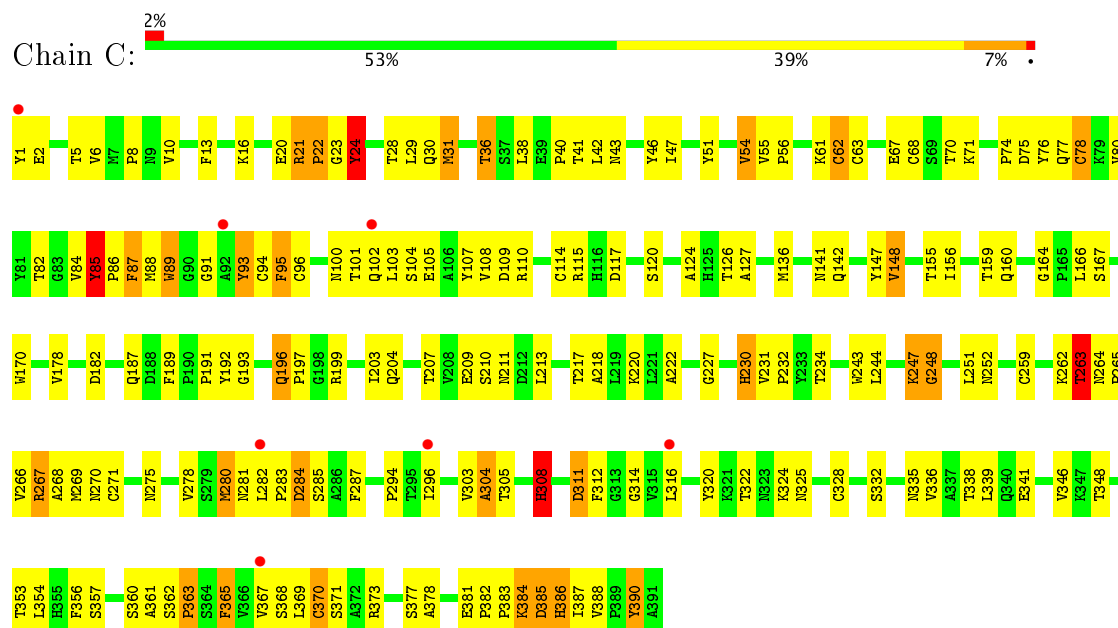
• Molecule 1: Structural polyprotein



• Molecule 1: Structural polyprotein



• Molecule 1: Structural polypeptide



4 Data and refinement statistics

Property	Value	Source
Space group	P 31 2 1	Depositor
Cell constants a, b, c, α , β , γ	198.20Å 198.20Å 116.25Å 90.00° 90.00° 120.00°	Depositor
Resolution (Å)	20.00 – 3.20 171.64 – 3.20	Depositor EDS
% Data completeness (in resolution range)	94.2 (20.00-3.20) 93.8 (171.64-3.20)	Depositor EDS
R_{merge}	(Not available)	Depositor
R_{sym}	(Not available)	Depositor
$\langle I/\sigma(I) \rangle$ ¹	3.18 (at 3.19Å)	Xtriage
Refinement program	CNS	Depositor
R, R_{free}	0.265 , 0.285 0.261 , 0.278	Depositor DCC
R_{free} test set	2075 reflections (5.07%)	DCC
Wilson B-factor (Å ²)	92.5	Xtriage
Anisotropy	0.138	Xtriage
Bulk solvent k_{sol} (e/Å ³), B_{sol} (Å ²)	0.28 , 67.6	EDS
L-test for twinning ²	$\langle L \rangle = 0.41$, $\langle L^2 \rangle = 0.24$	Xtriage
Estimated twinning fraction	0.066 for -h,-k,l	Xtriage
F_o, F_c correlation	0.88	EDS
Total number of atoms	9317	wwPDB-VP
Average B, all atoms (Å ²)	71.0	wwPDB-VP

Xtriage's analysis on translational NCS is as follows: *The largest off-origin peak in the Patterson function is 2.58% of the height of the origin peak. No significant pseudotranslation is detected.*

¹Intensities estimated from amplitudes.

²Theoretical values of $\langle |L| \rangle$, $\langle L^2 \rangle$ for acentric reflections are 0.5, 0.333 respectively for untwinned datasets, and 0.375, 0.2 for perfectly twinned datasets.

5 Model quality [i](#)

5.1 Standard geometry [i](#)

Bond lengths and bond angles in the following residue types are not validated in this section: BMA, NAG, PO4, NDG, FUC, HO, BR, FUL, MAN

The Z score for a bond length (or angle) is the number of standard deviations the observed value is removed from the expected value. A bond length (or angle) with $|Z| > 5$ is considered an outlier worth inspection. RMSZ is the root-mean-square of all Z scores of the bond lengths (or angles).

Mol	Chain	Bond lengths		Bond angles	
		RMSZ	$\# Z > 5$	RMSZ	$\# Z > 5$
1	A	0.70	0/3073	0.76	3/4193 (0.1%)
1	B	0.73	0/3073	0.75	2/4193 (0.0%)
1	C	0.69	0/3073	0.74	2/4193 (0.0%)
All	All	0.71	0/9219	0.75	7/12579 (0.1%)

There are no bond length outliers.

The worst 5 of 7 bond angle outliers are listed below:

Mol	Chain	Res	Type	Atoms	Z	Observed($^{\circ}$)	Ideal($^{\circ}$)
1	B	21	ARG	NE-CZ-NH2	7.51	124.05	120.30
1	A	21	ARG	NE-CZ-NH2	7.51	124.05	120.30
1	C	21	ARG	NE-CZ-NH2	7.49	124.05	120.30
1	A	94	CYS	CA-CB-SG	5.74	124.34	114.00
1	B	263	THR	N-CA-C	5.34	125.42	111.00

There are no chirality outliers.

There are no planarity outliers.

5.2 Too-close contacts [i](#)

In the following table, the Non-H and H(model) columns list the number of non-hydrogen atoms and hydrogen atoms in the chain respectively. The H(added) column lists the number of hydrogen atoms added and optimized by MolProbity. The Clashes column lists the number of clashes within the asymmetric unit, whereas Symm-Clashes lists symmetry related clashes.

Mol	Chain	Non-H	H(model)	H(added)	Clashes	Symm-Clashes
1	A	2993	0	2889	199	0
1	B	2993	0	2888	225	1
1	C	2993	0	2889	184	0

Continued on next page...

Continued from previous page...

Mol	Chain	Non-H	H(model)	H(added)	Clashes	Symm-Clashes
2	A	42	0	36	5	0
2	B	28	0	25	4	0
2	C	28	0	25	5	0
3	A	10	0	10	0	0
4	A	22	0	18	3	0
4	B	11	0	8	0	0
5	A	1	0	0	1	0
5	B	1	0	0	0	0
5	C	1	0	0	0	0
6	A	2	0	0	0	0
6	B	1	0	0	0	0
6	C	1	0	0	0	0
7	B	14	0	11	2	0
8	B	10	0	10	2	0
9	B	22	0	19	2	0
10	B	5	0	0	0	0
11	A	54	0	0	2	0
11	B	46	0	0	8	0
11	C	39	0	0	5	0
All	All	9317	0	8828	600	1

The all-atom clashscore is defined as the number of clashes found per 1000 atoms (including hydrogen atoms). The all-atom clashscore for this structure is 33.

The worst 5 of 600 close contacts within the same asymmetric unit are listed below, sorted by their clash magnitude.

Atom-1	Atom-2	Interatomic distance (Å)	Clash overlap (Å)
1:C:21:ARG:NH2	1:C:24:TYR:CE2	2.08	1.19
1:C:21:ARG:NH2	1:C:24:TYR:CZ	2.17	1.10
1:C:21:ARG:NH2	1:C:24:TYR:OH	1.84	1.09
1:B:65:ALA:HA	1:B:101:THR:HG21	1.39	1.04
1:A:65:ALA:HA	1:A:101:THR:HG21	1.41	1.02

All (1) symmetry-related close contacts are listed below. The label for Atom-2 includes the symmetry operator and encoded unit-cell translations to be applied.

Atom-1	Atom-2	Interatomic distance (Å)	Clash overlap (Å)
1:B:60:VAL:O	1:B:60:VAL:O[6_556]	2.06	0.14

5.3 Torsion angles

5.3.1 Protein backbone

In the following table, the Percentiles column shows the percent Ramachandran outliers of the chain as a percentile score with respect to all X-ray entries followed by that with respect to entries of similar resolution.

The Analysed column shows the number of residues for which the backbone conformation was analysed, and the total number of residues.

Mol	Chain	Analysed	Favoured	Allowed	Outliers	Percentiles	
1	A	389/391 (100%)	315 (81%)	50 (13%)	24 (6%)	2	13
1	B	389/391 (100%)	320 (82%)	46 (12%)	23 (6%)	2	15
1	C	389/391 (100%)	319 (82%)	50 (13%)	20 (5%)	2	18
All	All	1167/1173 (100%)	954 (82%)	146 (12%)	67 (6%)	2	16

5 of 67 Ramachandran outliers are listed below:

Mol	Chain	Res	Type
1	A	85	TYR
1	A	96	CYS
1	A	97	ASP
1	A	192	TYR
1	A	308	HIS

5.3.2 Protein sidechains

In the following table, the Percentiles column shows the percent sidechain outliers of the chain as a percentile score with respect to all X-ray entries followed by that with respect to entries of similar resolution.

The Analysed column shows the number of residues for which the sidechain conformation was analysed, and the total number of residues.

Mol	Chain	Analysed	Rotameric	Outliers	Percentiles	
1	A	336/336 (100%)	299 (89%)	37 (11%)	7	30
1	B	336/336 (100%)	294 (88%)	42 (12%)	5	24
1	C	336/336 (100%)	296 (88%)	40 (12%)	6	26
All	All	1008/1008 (100%)	889 (88%)	119 (12%)	6	27

5 of 119 residues with a non-rotameric sidechain are listed below:

Mol	Chain	Res	Type
1	B	102	GLN
1	B	305	THR
1	C	363	PRO
1	B	148	VAL
1	B	263	THR

Some sidechains can be flipped to improve hydrogen bonding and reduce clashes. 5 of 46 such sidechains are listed below:

Mol	Chain	Res	Type
1	B	142	GLN
1	B	230	HIS
1	C	281	ASN
1	B	187	GLN
1	B	211	ASN

5.3.3 RNA [i](#)

There are no RNA molecules in this entry.

5.4 Non-standard residues in protein, DNA, RNA chains [i](#)

There are no non-standard protein/DNA/RNA residues in this entry.

5.5 Carbohydrates [i](#)

There are no carbohydrates in this entry.

5.6 Ligand geometry [i](#)

Of 23 ligands modelled in this entry, 7 are monoatomic - leaving 16 for Mogul analysis.

In the following table, the Counts columns list the number of bonds (or angles) for which Mogul statistics could be retrieved, the number of bonds (or angles) that are observed in the model and the number of bonds (or angles) that are defined in the Chemical Component Dictionary. The Link column lists molecule types, if any, to which the group is linked. The Z score for a bond length (or angle) is the number of standard deviations the observed value is removed from the expected value. A bond length (or angle) with $|Z| > 2$ is considered an outlier worth inspection. RMSZ is the root-mean-square of all Z scores of the bond lengths (or angles).

Mol	Type	Chain	Res	Link	Bond lengths			Bond angles		
					Counts	RMSZ	# Z > 2	Counts	RMSZ	# Z > 2
2	NAG	A	401	1,3,2	14,14,15	0.67	0	15,19,21	1.28	2 (13%)
3	FUL	A	402	2	9,10,11	0.99	1 (11%)	13,14,16	0.69	0
2	NAG	A	403	2,4	14,14,15	0.75	0	15,19,21	1.04	1 (6%)
4	BMA	A	404	2,4	11,11,12	1.41	2 (18%)	13,15,17	0.73	1 (7%)
4	BMA	A	408	2,4	11,11,12	1.40	2 (18%)	13,15,17	1.24	2 (15%)
2	NAG	A	409	4	14,14,15	1.18	0	15,19,21	0.80	0
7	NDG	B	401	1,8,2	14,14,15	0.93	0	15,19,21	1.19	1 (6%)
8	FUC	B	402	7	9,10,11	1.41	2 (22%)	13,14,16	1.05	1 (7%)
2	NAG	B	403	4,7	14,14,15	0.82	0	15,19,21	0.95	1 (6%)
4	BMA	B	404	9,2	11,11,12	1.43	1 (9%)	13,15,17	1.74	3 (23%)
9	MAN	B	405	4	11,11,12	1.42	1 (9%)	13,15,17	1.38	3 (23%)
9	MAN	B	408	2,4	11,11,12	1.68	2 (18%)	13,15,17	1.61	3 (23%)
2	NAG	B	409	9	14,14,15	1.52	3 (21%)	15,19,21	1.00	1 (6%)
10	PO4	B	415	-	4,4,4	0.55	0	6,6,6	0.45	0
2	NAG	C	401	1,2	14,14,15	1.21	1 (7%)	15,19,21	0.69	0
2	NAG	C	403	2	14,14,15	1.32	3 (21%)	15,19,21	1.08	1 (6%)

In the following table, the Chirals column lists the number of chiral outliers, the number of chiral centers analysed, the number of these observed in the model and the number defined in the Chemical Component Dictionary. Similar counts are reported in the Torsion and Rings columns. '-' means no outliers of that kind were identified.

Mol	Type	Chain	Res	Link	Chirals	Torsions	Rings
2	NAG	A	401	1,3,2	-	0/6/23/26	0/1/1/1
3	FUL	A	402	2	-	0/0/17/20	0/1/1/1
2	NAG	A	403	2,4	-	0/6/23/26	0/1/1/1
4	BMA	A	404	2,4	-	0/2/19/22	0/1/1/1
4	BMA	A	408	2,4	-	0/2/19/22	0/1/1/1
2	NAG	A	409	4	-	0/6/23/26	0/1/1/1
7	NDG	B	401	1,8,2	-	0/6/23/26	0/1/1/1
8	FUC	B	402	7	1/1/4/5	0/0/17/20	0/1/1/1
2	NAG	B	403	4,7	-	0/6/23/26	0/1/1/1
4	BMA	B	404	9,2	-	0/2/19/22	0/1/1/1
9	MAN	B	405	4	-	0/2/19/22	0/1/1/1
9	MAN	B	408	2,4	-	0/2/19/22	0/1/1/1
2	NAG	B	409	9	-	0/6/23/26	0/1/1/1
10	PO4	B	415	-	-	0/0/0/0	0/0/0/0
2	NAG	C	401	1,2	-	0/6/23/26	0/1/1/1
2	NAG	C	403	2	-	0/6/23/26	0/1/1/1

The worst 5 of 18 bond length outliers are listed below:

Mol	Chain	Res	Type	Atoms	Z	Observed(Å)	Ideal(Å)
2	C	403	NAG	C4-C3	2.06	1.57	1.52
4	A	408	BMA	O2-C2	2.24	1.48	1.43
2	B	409	NAG	C8-C7	2.25	1.55	1.50
3	A	402	FUL	C2-C3	2.26	1.55	1.52
4	A	404	BMA	C4-C5	2.28	1.57	1.53

The worst 5 of 20 bond angle outliers are listed below:

Mol	Chain	Res	Type	Atoms	Z	Observed(°)	Ideal(°)
2	A	401	NAG	C2-N2-C7	-3.92	117.23	122.94
7	B	401	NDG	C3-C4-C5	-3.03	104.87	110.22
2	B	403	NAG	C2-N2-C7	-2.33	119.54	122.94
4	A	408	BMA	C3-C4-C5	-2.31	106.15	110.22
2	C	403	NAG	C2-N2-C7	-2.21	119.72	122.94

All (1) chirality outliers are listed below:

Mol	Chain	Res	Type	Atom
8	B	402	FUC	C1

There are no torsion outliers.

There are no ring outliers.

11 monomers are involved in 16 short contacts:

Mol	Chain	Res	Type	Clashes	Symm-Clashes
2	A	401	NAG	2	0
2	A	403	NAG	2	0
4	A	404	BMA	3	0
2	A	409	NAG	3	0
7	B	401	NDG	2	0
8	B	402	FUC	2	0
2	B	403	NAG	2	0
9	B	408	MAN	2	0
2	B	409	NAG	2	0
2	C	401	NAG	5	0
2	C	403	NAG	3	0

5.7 Other polymers

There are no such residues in this entry.

5.8 Polymer linkage issues ⓘ

There are no chain breaks in this entry.

6 Fit of model and data [i](#)

6.1 Protein, DNA and RNA chains [i](#)

In the following table, the column labelled ‘#RSRZ> 2’ contains the number (and percentage) of RSRZ outliers, followed by percent RSRZ outliers for the chain as percentile scores relative to all X-ray entries and entries of similar resolution. The OWAB column contains the minimum, median, 95th percentile and maximum values of the occupancy-weighted average B-factor per residue. The column labelled ‘Q< 0.9’ lists the number of (and percentage) of residues with an average occupancy less than 0.9.

Mol	Chain	Analysed	<RSRZ>	#RSRZ>2	OWAB(Å ²)	Q<0.9
1	A	391/391 (100%)	0.21	8 (2%) 65 50	15, 63, 132, 186	0
1	B	391/391 (100%)	0.35	18 (4%) 33 20	19, 61, 133, 189	0
1	C	391/391 (100%)	0.26	7 (1%) 69 55	19, 64, 129, 171	0
All	All	1173/1173 (100%)	0.28	33 (2%) 53 39	15, 63, 132, 189	0

The worst 5 of 33 RSRZ outliers are listed below:

Mol	Chain	Res	Type	RSRZ
1	B	93	TYR	6.3
1	B	59	TYR	4.6
1	B	84	VAL	4.2
1	B	90	GLY	3.9
1	B	64	GLY	3.9

6.2 Non-standard residues in protein, DNA, RNA chains [i](#)

There are no non-standard protein/DNA/RNA residues in this entry.

6.3 Carbohydrates [i](#)

There are no carbohydrates in this entry.

6.4 Ligands [i](#)

In the following table, the Atoms column lists the number of modelled atoms in the group and the number defined in the chemical component dictionary. LLDF column lists the quality of electron density of the group with respect to its neighbouring residues in protein, DNA or RNA chains. The B-factors column lists the minimum, median, 95th percentile and maximum values of B factors

of atoms in the group. The column labelled 'Q< 0.9' lists the number of atoms with occupancy less than 0.9.

Mol	Type	Chain	Res	Atoms	RSCC	RSR	LLDF	B-factors(Å ²)	Q<0.9
7	NDG	B	401	14/15	0.86	0.24	-0.30	66,68,70,71	0
6	HO	A	411	1/1	1.00	0.20	-0.76	18,18,18,18	0
10	PO4	B	415	5/5	0.85	0.22	-0.97	78,79,81,82	0
2	NAG	A	401	14/15	0.92	0.20	-1.27	46,52,56,56	0
5	BR	A	417	1/1	0.87	0.18	-1.63	95,95,95,95	0
5	BR	C	416	1/1	0.98	0.15	-1.81	83,83,83,83	0
5	BR	B	418	1/1	0.93	0.11	-2.56	77,77,77,77	0
4	BMA	A	408	11/12	0.67	0.50	-	164,164,165,166	0
4	BMA	A	404	11/12	0.44	0.36	-	177,178,179,179	0
2	NAG	C	401	14/15	0.66	0.34	-	152,155,158,158	0
2	NAG	B	403	14/15	0.91	0.24	-	95,97,98,99	0
4	BMA	B	404	11/12	0.90	0.29	-	182,183,184,185	0
6	HO	C	414	1/1	0.97	0.13	-	69,69,69,69	0
2	NAG	C	403	14/15	0.67	0.47	-	195,198,199,200	0
2	NAG	B	409	14/15	0.65	0.41	-	175,176,178,178	0
9	MAN	B	408	11/12	0.78	0.46	-	177,178,178,179	0
6	HO	A	412	1/1	0.99	0.15	-	67,67,67,67	0
2	NAG	A	403	14/15	0.85	0.19	-	135,137,139,139	0
2	NAG	A	409	14/15	0.67	0.19	-	191,195,197,198	0
8	FUC	B	402	10/11	0.51	0.35	-	112,113,114,114	0
6	HO	B	413	1/1	0.99	0.14	-	77,77,77,77	0
9	MAN	B	405	11/12	0.58	0.56	-	138,139,140,141	0
3	FUL	A	402	10/11	0.92	0.38	-	86,87,88,88	0

6.5 Other polymers

There are no such residues in this entry.