



wwPDB X-ray Structure Validation Summary Report ⓘ

Feb 14, 2017 – 11:17 am GMT

PDB ID : 1RGT
Title : Crystal structure of human Tyrosyl-DNA Phosphodiesterase complexed with vanadate, octopamine, and tetranucleotide AGTC
Authors : Davies, D.R.; Interthal, H.; Champoux, J.J.; Hol, W.G.
Deposited on : 2003-11-12
Resolution : 2.00 Å(reported)

This is a wwPDB X-ray Structure Validation Summary Report for a publicly released PDB entry.

We welcome your comments at validation@mail.wwpdb.org

A user guide is available at

<http://wwpdb.org/validation/2016/XrayValidationReportHelp>

with specific help available everywhere you see the ⓘ symbol.

The following versions of software and data (see [references ⓘ](#)) were used in the production of this report:

MolProbity : 4.02b-467
Mogul : 1.7.2 (RC1), CSD as538be (2017)
Xtriage (Phenix) : 1.9-1692
EDS : trunk28620
Percentile statistics : 20161228.v01 (using entries in the PDB archive December 28th 2016)
Refmac : 5.8.0135
CCP4 : 6.5.0
Ideal geometry (proteins) : Engh & Huber (2001)
Ideal geometry (DNA, RNA) : Parkinson et al. (1996)
Validation Pipeline (wwPDB-VP) : recalc28949

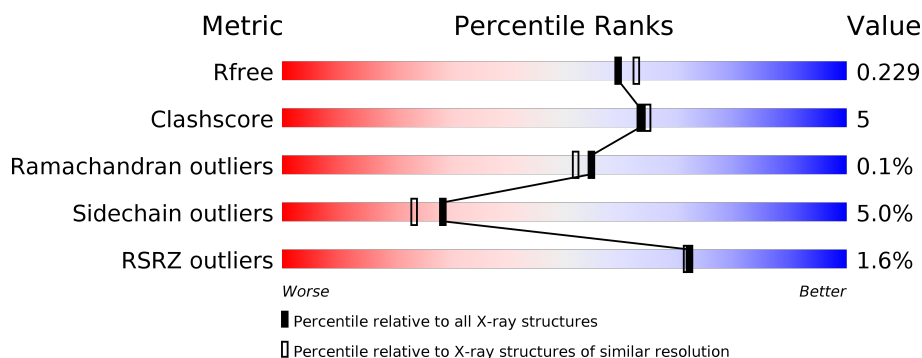
1 Overall quality at a glance

The following experimental techniques were used to determine the structure:

X-RAY DIFFRACTION

The reported resolution of this entry is 2.00 Å.

Percentile scores (ranging between 0-100) for global validation metrics of the entry are shown in the following graphic. The table shows the number of entries on which the scores are based.



Metric	Whole archive (#Entries)	Similar resolution (#Entries, resolution range(Å))
R_{free}	100719	6609 (2.00-2.00)
Clashscore	112137	7775 (2.00-2.00)
Ramachandran outliers	110173	7679 (2.00-2.00)
Sidechain outliers	110143	7678 (2.00-2.00)
RSRZ outliers	101464	6696 (2.00-2.00)

The table below summarises the geometric issues observed across the polymeric chains and their fit to the electron density. The red, orange, yellow and green segments on the lower bar indicate the fraction of residues that contain outliers for ≥ 3 , 2, 1 and 0 types of geometric quality criteria. A grey segment represents the fraction of residues that are not modelled. The numeric value for each fraction is indicated below the corresponding segment, with a dot representing fractions $\leq 5\%$. The upper red bar (where present) indicates the fraction of residues that have poor fit to the electron density. The numeric value is given above the bar.

Mol	Chain	Length	Quality of chain
1	D	4	<div> <div>50%</div> <div>25%</div> <div>25%</div> </div>
1	F	4	<div> <div>25%</div> <div>25%</div> <div>25%</div> <div>25%</div> </div>
2	A	485	<div> <div>2%</div> <div>74%</div> <div>12%</div> <div>13%</div> </div>
2	B	485	<div> <div>0%</div> <div>78%</div> <div>10%</div> <div>12%</div> </div>

The following table lists non-polymeric compounds, carbohydrate monomers and non-standard residues in protein, DNA, RNA chains that are outliers for geometric or electron-density-fit crite-

ria:

Mol	Type	Chain	Res	Chirality	Geometry	Clashes	Electron density
3	VO4	A	699	-	-	X	-
3	VO4	B	699	-	-	X	-
5	OTS	A	995[A]	-	-	-	X
6	OTR	A	996[B]	-	-	-	X

2 Entry composition

There are 7 unique types of molecules in this entry. The entry contains 7209 atoms, of which 0 are hydrogens and 0 are deuteriums.

In the tables below, the ZeroOcc column contains the number of atoms modelled with zero occupancy, the AltConf column contains the number of residues with at least one atom in alternate conformation and the Trace column contains the number of residues modelled with at most 2 atoms.

- Molecule 1 is a DNA chain called 5'-D(*AP*GP*TP*C)-3'.

Mol	Chain	Residues	Atoms					ZeroOcc	AltConf	Trace
1	D	3	Total	C	N	O	P	0	0	0
			50	24	5	18	3			
1	F	3	Total	C	N	O	P	0	0	0
			50	24	5	18	3			

- Molecule 2 is a protein called Tyrosyl-DNA phosphodiesterase 1.

Mol	Chain	Residues	Atoms					ZeroOcc	AltConf	Trace
2	A	424	Total	C	N	O	S	0	0	0
			3389	2205	572	601	11			
2	B	429	Total	C	N	O	S	0	0	0
			3438	2237	580	610	11			

There are 56 discrepancies between the modelled and reference sequences:

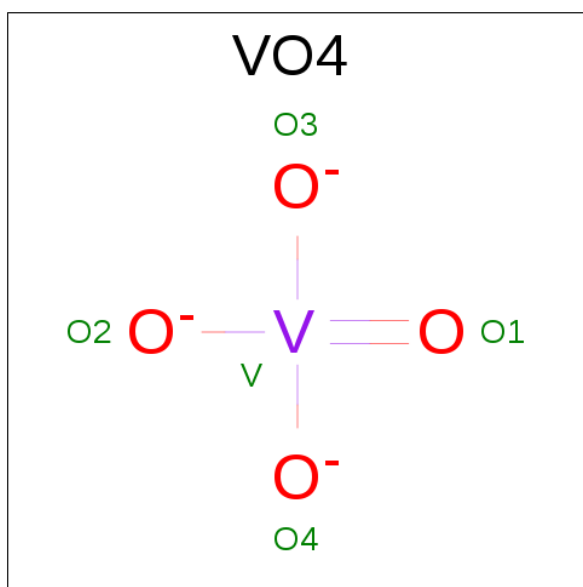
Chain	Residue	Modelled	Actual	Comment	Reference
A	124	MET	-	CLONING ARTIFACT	UNP Q9NUW8
A	125	GLY	-	CLONING ARTIFACT	UNP Q9NUW8
A	126	SER	-	CLONING ARTIFACT	UNP Q9NUW8
A	127	SER	-	CLONING ARTIFACT	UNP Q9NUW8
A	128	HIS	-	CLONING ARTIFACT	UNP Q9NUW8
A	129	HIS	-	CLONING ARTIFACT	UNP Q9NUW8
A	130	HIS	-	CLONING ARTIFACT	UNP Q9NUW8
A	131	HIS	-	CLONING ARTIFACT	UNP Q9NUW8
A	132	HIS	-	CLONING ARTIFACT	UNP Q9NUW8
A	133	HIS	-	CLONING ARTIFACT	UNP Q9NUW8
A	134	SER	-	CLONING ARTIFACT	UNP Q9NUW8
A	135	SER	-	CLONING ARTIFACT	UNP Q9NUW8
A	136	GLY	-	CLONING ARTIFACT	UNP Q9NUW8
A	137	LEU	-	CLONING ARTIFACT	UNP Q9NUW8
A	138	VAL	-	CLONING ARTIFACT	UNP Q9NUW8
A	139	PRO	-	CLONING ARTIFACT	UNP Q9NUW8

Continued on next page...

Continued from previous page...

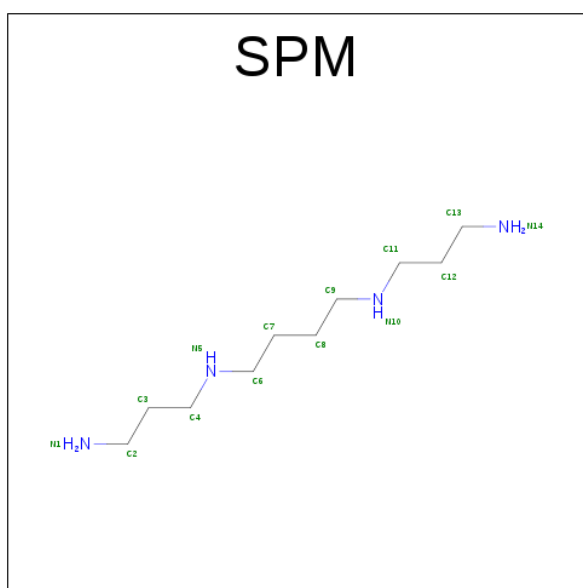
Chain	Residue	Modelled	Actual	Comment	Reference
A	140	ARG	-	CLONING ARTIFACT	UNP Q9NUW8
A	141	GLY	-	CLONING ARTIFACT	UNP Q9NUW8
A	142	SER	-	CLONING ARTIFACT	UNP Q9NUW8
A	143	HIS	-	CLONING ARTIFACT	UNP Q9NUW8
A	144	MET	-	CLONING ARTIFACT	UNP Q9NUW8
A	145	LEU	-	CLONING ARTIFACT	UNP Q9NUW8
A	146	GLU	-	CLONING ARTIFACT	UNP Q9NUW8
A	147	ASP	-	CLONING ARTIFACT	UNP Q9NUW8
A	148	PRO	-	CLONING ARTIFACT	UNP Q9NUW8
A	322	ASN	ASP	ENGINEERED	UNP Q9NUW8
A	328	THR	MET	ENGINEERED	UNP Q9NUW8
A	548	LEU	PHE	ENGINEERED	UNP Q9NUW8
B	124	MET	-	CLONING ARTIFACT	UNP Q9NUW8
B	125	GLY	-	CLONING ARTIFACT	UNP Q9NUW8
B	126	SER	-	CLONING ARTIFACT	UNP Q9NUW8
B	127	SER	-	CLONING ARTIFACT	UNP Q9NUW8
B	128	HIS	-	CLONING ARTIFACT	UNP Q9NUW8
B	129	HIS	-	CLONING ARTIFACT	UNP Q9NUW8
B	130	HIS	-	CLONING ARTIFACT	UNP Q9NUW8
B	131	HIS	-	CLONING ARTIFACT	UNP Q9NUW8
B	132	HIS	-	CLONING ARTIFACT	UNP Q9NUW8
B	133	HIS	-	CLONING ARTIFACT	UNP Q9NUW8
B	134	SER	-	CLONING ARTIFACT	UNP Q9NUW8
B	135	SER	-	CLONING ARTIFACT	UNP Q9NUW8
B	136	GLY	-	CLONING ARTIFACT	UNP Q9NUW8
B	137	LEU	-	CLONING ARTIFACT	UNP Q9NUW8
B	138	VAL	-	CLONING ARTIFACT	UNP Q9NUW8
B	139	PRO	-	CLONING ARTIFACT	UNP Q9NUW8
B	140	ARG	-	CLONING ARTIFACT	UNP Q9NUW8
B	141	GLY	-	CLONING ARTIFACT	UNP Q9NUW8
B	142	SER	-	CLONING ARTIFACT	UNP Q9NUW8
B	143	HIS	-	CLONING ARTIFACT	UNP Q9NUW8
B	144	MET	-	CLONING ARTIFACT	UNP Q9NUW8
B	145	LEU	-	CLONING ARTIFACT	UNP Q9NUW8
B	146	GLU	-	CLONING ARTIFACT	UNP Q9NUW8
B	147	ASP	-	CLONING ARTIFACT	UNP Q9NUW8
B	148	PRO	-	CLONING ARTIFACT	UNP Q9NUW8
B	322	ASN	ASP	ENGINEERED	UNP Q9NUW8
B	328	THR	MET	ENGINEERED	UNP Q9NUW8
B	548	LEU	PHE	ENGINEERED	UNP Q9NUW8

- Molecule 3 is VANADATE ION (three-letter code: VO4) (formula: O₄V).



Mol	Chain	Residues	Atoms			ZeroOcc	AltConf
3	A	1	Total	O	V	0	0
			3	2	1		
3	B	1	Total	O	V	0	0
			3	2	1		

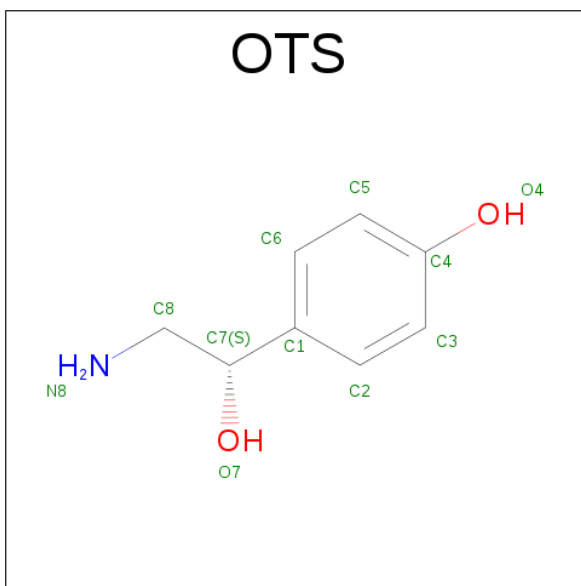
- Molecule 4 is SPERMINE (three-letter code: SPM) (formula: $C_{10}H_{26}N_4$).



Mol	Chain	Residues	Atoms			ZeroOcc	AltConf
4	A	1	Total	C	N	0	0
			10	7	3		

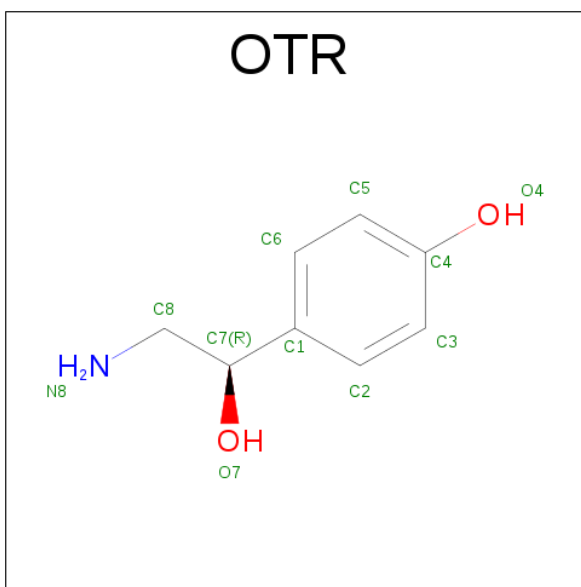
- Molecule 5 is 4-(2S-AMINO-1-HYDROXYETHYL)PHENOL (three-letter code: OTS)

(formula: $C_8H_{11}NO_2$).



Mol	Chain	Residues	Atoms				ZeroOcc	AltConf
5	A	1	Total	C	N	O	0	1
			11	8	1	2		
5	B	1	Total	C	N	O	0	1
			11	8	1	2		

- Molecule 6 is 4-(2R-AMINO-1-HYDROXYETHYL)PHENOL (three-letter code: OTR) (formula: $C_8H_{11}NO_2$).

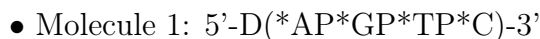


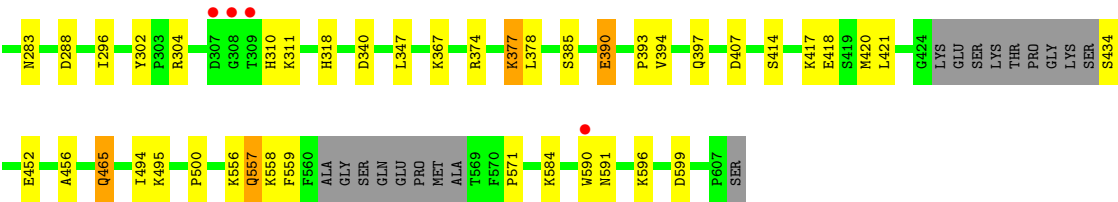
Mol	Chain	Residues	Atoms				ZeroOcc	AltConf
6	A	1	Total	C	N	O	0	1
			11	8	1	2		
6	B	1	Total	C	N	O	0	1
			11	8	1	2		

- Molecule 7 is water.

Mol	Chain	Residues	Atoms		ZeroOcc	AltConf
7	A	101	Total	O	0	0
			101	101		
7	B	112	Total	O	0	0
			112	112		
7	D	6	Total	O	0	0
			6	6		
7	F	3	Total	O	0	0
			3	3		

- Molecule 1: 5'-D(*AP*GP*TP*C)-3'





4 Data and refinement statistics

Property	Value	Source
Space group	P 21 21 21	Depositor
Cell constants a, b, c, α , β , γ	49.79Å 104.89Å 194.12Å 90.00° 90.00° 90.00°	Depositor
Resolution (Å)	50.00 – 2.00 48.23 – 2.00	Depositor EDS
% Data completeness (in resolution range)	97.5 (50.00-2.00) 97.5 (48.23-2.00)	Depositor EDS
R_{merge}	(Not available)	Depositor
R_{sym}	0.09	Depositor
$\langle I/\sigma(I) \rangle$ ¹	3.59 (at 2.00Å)	Xtriage
Refinement program	REFMAC 5.1.24	Depositor
R, R_{free}	0.194 , 0.228 0.196 , 0.229	Depositor DCC
R_{free} test set	3424 reflections (5.30%)	DCC
Wilson B-factor (Å ²)	20.8	Xtriage
Anisotropy	0.658	Xtriage
Bulk solvent k_{sol} (e/Å ³), B_{sol} (Å ²)	0.36 , 51.7	EDS
L-test for twinning ²	$\langle L \rangle = 0.49$, $\langle L^2 \rangle = 0.32$	Xtriage
Estimated twinning fraction	No twinning to report.	Xtriage
F_o, F_c correlation	0.94	EDS
Total number of atoms	7209	wwPDB-VP
Average B, all atoms (Å ²)	23.0	wwPDB-VP

Xtriage's analysis on translational NCS is as follows: *The largest off-origin peak in the Patterson function is 3.70% of the height of the origin peak. No significant pseudotranslation is detected.*

¹Intensities estimated from amplitudes.

²Theoretical values of $\langle |L| \rangle$, $\langle L^2 \rangle$ for acentric reflections are 0.5, 0.333 respectively for untwinned datasets, and 0.375, 0.2 for perfectly twinned datasets.

5 Model quality [i](#)

5.1 Standard geometry [i](#)

Bond lengths and bond angles in the following residue types are not validated in this section: VO4, OTR, OTS, SPM

The Z score for a bond length (or angle) is the number of standard deviations the observed value is removed from the expected value. A bond length (or angle) with $|Z| > 5$ is considered an outlier worth inspection. RMSZ is the root-mean-square of all Z scores of the bond lengths (or angles).

Mol	Chain	Bond lengths		Bond angles	
		RMSZ	# $ Z > 5$	RMSZ	# $ Z > 5$
1	D	0.77	0/54	1.58	1/80 (1.2%)
1	F	0.80	0/54	1.64	1/80 (1.2%)
2	A	0.44	0/3500	0.66	7/4758 (0.1%)
2	B	0.48	0/3552	0.68	6/4830 (0.1%)
All	All	0.46	0/7160	0.70	15/9748 (0.2%)

There are no bond length outliers.

The worst 5 of 15 bond angle outliers are listed below:

Mol	Chain	Res	Type	Atoms	Z	Observed(°)	Ideal(°)
2	A	599	ASP	CB-CG-OD2	7.05	124.64	118.30
2	A	209	ASP	CB-CG-OD2	6.87	124.48	118.30
1	F	805	DT	O4'-C1'-N1	-6.54	103.42	108.00
2	B	407	ASP	CB-CG-OD2	6.33	124.00	118.30
2	A	340	ASP	CB-CG-OD2	6.15	123.84	118.30

There are no chirality outliers.

There are no planarity outliers.

5.2 Too-close contacts [i](#)

In the following table, the Non-H and H(model) columns list the number of non-hydrogen atoms and hydrogen atoms in the chain respectively. The H(added) column lists the number of hydrogen atoms added and optimized by MolProbity. The Clashes column lists the number of clashes within the asymmetric unit, whereas Symm-Clashes lists symmetry related clashes.

Mol	Chain	Non-H	H(model)	H(added)	Clashes	Symm-Clashes
1	D	50	0	29	0	0
1	F	50	0	29	1	0

Continued on next page...

Continued from previous page...

Mol	Chain	Non-H	H(model)	H(added)	Clashes	Symm-Clashes
2	A	3389	0	3325	36	0
2	B	3438	0	3375	29	0
3	A	3	0	0	3	0
3	B	3	0	0	2	0
4	A	10	0	17	0	0
5	A	11	0	10	1	0
5	B	11	0	10	0	0
6	A	11	0	10	1	0
6	B	11	0	10	0	0
7	A	101	0	0	2	0
7	B	112	0	0	1	0
7	D	6	0	0	0	0
7	F	3	0	0	0	0
All	All	7209	0	6815	67	0

The all-atom clashscore is defined as the number of clashes found per 1000 atoms (including hydrogen atoms). The all-atom clashscore for this structure is 5.

The worst 5 of 67 close contacts within the same asymmetric unit are listed below, sorted by their clash magnitude.

Atom-1	Atom-2	Interatomic distance (Å)	Clash overlap (Å)
3:B:699:VO4:V	3:B:699:VO4:O1	1.47	0.70
2:A:318:HIS:HE1	2:B:318:HIS:HE1	1.41	0.69
2:A:377:LYS:HE2	2:A:381:ASP:OD2	1.93	0.69
3:A:699:VO4:O3	3:A:699:VO4:V	1.52	0.67
3:B:699:VO4:O3	3:B:699:VO4:V	1.52	0.67

There are no symmetry-related clashes.

5.3 Torsion angles ⓘ

5.3.1 Protein backbone ⓘ

In the following table, the Percentiles column shows the percent Ramachandran outliers of the chain as a percentile score with respect to all X-ray entries followed by that with respect to entries of similar resolution.

The Analysed column shows the number of residues for which the backbone conformation was analysed, and the total number of residues.

Mol	Chain	Analysed	Favoured	Allowed	Outliers	Percentiles	
2	A	416/485 (86%)	404 (97%)	11 (3%)	1 (0%)	51	48
2	B	423/485 (87%)	413 (98%)	10 (2%)	0	100	100
All	All	839/970 (86%)	817 (97%)	21 (2%)	1 (0%)	55	52

All (1) Ramachandran outliers are listed below:

Mol	Chain	Res	Type
2	A	307	ASP

5.3.2 Protein sidechains ⓘ

In the following table, the Percentiles column shows the percent sidechain outliers of the chain as a percentile score with respect to all X-ray entries followed by that with respect to entries of similar resolution.

The Analysed column shows the number of residues for which the sidechain conformation was analysed, and the total number of residues.

Mol	Chain	Analysed	Rotameric	Outliers	Percentiles	
2	A	366/421 (87%)	346 (94%)	20 (6%)	25	20
2	B	372/421 (88%)	355 (95%)	17 (5%)	31	27
All	All	738/842 (88%)	701 (95%)	37 (5%)	28	23

5 of 37 residues with a non-rotameric sidechain are listed below:

Mol	Chain	Res	Type
2	A	495	LYS
2	B	190	SER
2	B	584	LYS
2	A	556	LYS
2	A	584	LYS

Some sidechains can be flipped to improve hydrogen bonding and reduce clashes. 5 of 13 such sidechains are listed below:

Mol	Chain	Res	Type
2	A	531	GLN
2	B	165	GLN
2	B	465	GLN
2	A	397	GLN
2	B	397	GLN

5.3.3 RNA ⓘ

There are no RNA molecules in this entry.

5.4 Non-standard residues in protein, DNA, RNA chains ⓘ

There are no non-standard protein/DNA/RNA residues in this entry.

5.5 Carbohydrates ⓘ

There are no carbohydrates in this entry.

5.6 Ligand geometry ⓘ

7 ligands are modelled in this entry.

In the following table, the Counts columns list the number of bonds (or angles) for which Mogul statistics could be retrieved, the number of bonds (or angles) that are observed in the model and the number of bonds (or angles) that are defined in the chemical component dictionary. The Link column lists molecule types, if any, to which the group is linked. The Z score for a bond length (or angle) is the number of standard deviations the observed value is removed from the expected value. A bond length (or angle) with $|Z| > 2$ is considered an outlier worth inspection. RMSZ is the root-mean-square of all Z scores of the bond lengths (or angles).

Mol	Type	Chain	Res	Link	Bond lengths			Bond angles		
					Counts	RMSZ	$\# Z > 2$	Counts	RMSZ	$\# Z > 2$
3	VO4	A	699	1,2	0,2,4	0.00	-	0,1,6	0.00	-
5	OTS	A	995[A]	-	11,11,11	0.66	0	13,14,14	0.67	0
6	OTR	A	996[B]	-	11,11,11	0.66	0	13,14,14	0.68	0
4	SPM	A	999	-	9,9,13	0.33	0	8,8,12	0.81	0
3	VO4	B	699	1,2	0,2,4	0.00	-	0,1,6	0.00	-
5	OTS	B	997[A]	-	11,11,11	0.98	1 (9%)	13,14,14	0.46	0
6	OTR	B	998[B]	-	11,11,11	0.98	1 (9%)	13,14,14	0.46	0

In the following table, the Chirals column lists the number of chiral outliers, the number of chiral centers analysed, the number of these observed in the model and the number defined in the chemical component dictionary. Similar counts are reported in the Torsion and Rings columns. '-' means no outliers of that kind were identified.

Mol	Type	Chain	Res	Link	Chirals	Torsions	Rings
3	VO4	A	699	1,2	-	0/0/0/0	0/0/0/0
5	OTS	A	995[A]	-	-	0/6/6/6	0/1/1/1
6	OTR	A	996[B]	-	-	0/6/6/6	0/1/1/1

Continued on next page...

Continued from previous page...

Mol	Type	Chain	Res	Link	Chirals	Torsions	Rings
4	SPM	A	999	-	-	0/7/7/11	0/0/0/0
3	VO4	B	699	1,2	-	0/0/0/0	0/0/0/0
5	OTS	B	997[A]	-	-	0/6/6/6	0/1/1/1
6	OTR	B	998[B]	-	-	0/6/6/6	0/1/1/1

All (2) bond length outliers are listed below:

Mol	Chain	Res	Type	Atoms	Z	Observed(Å)	Ideal(Å)
5	B	997[A]	OTS	C1-C7	2.43	1.56	1.51
6	B	998[B]	OTR	C1-C7	2.43	1.56	1.51

There are no bond angle outliers.

There are no chirality outliers.

There are no torsion outliers.

There are no ring outliers.

4 monomers are involved in 7 short contacts:

Mol	Chain	Res	Type	Clashes	Symm-Clashes
3	A	699	VO4	3	0
5	A	995[A]	OTS	1	0
6	A	996[B]	OTR	1	0
3	B	699	VO4	2	0

5.7 Other polymers [i](#)

There are no such residues in this entry.

5.8 Polymer linkage issues [i](#)

There are no chain breaks in this entry.

6 Fit of model and data [i](#)

6.1 Protein, DNA and RNA chains [i](#)

In the following table, the column labelled ‘#RSRZ> 2’ contains the number (and percentage) of RSRZ outliers, followed by percent RSRZ outliers for the chain as percentile scores relative to all X-ray entries and entries of similar resolution. The OWAB column contains the minimum, median, 95th percentile and maximum values of the occupancy-weighted average B-factor per residue. The column labelled ‘Q< 0.9’ lists the number of (and percentage) of residues with an average occupancy less than 0.9.

Mol	Chain	Analysed	<RSRZ>	#RSRZ>2	OWAB(Å ²)	Q<0.9
1	D	3/4 (75%)	-0.54	0 100 100	20, 20, 31, 44	0
1	F	3/4 (75%)	-0.46	0 100 100	20, 20, 27, 42	0
2	A	424/485 (87%)	-0.05	9 (2%) 64 63	11, 25, 44, 61	0
2	B	429/485 (88%)	-0.15	5 (1%) 79 78	8, 19, 36, 51	0
All	All	859/978 (87%)	-0.11	14 (1%) 72 71	8, 22, 42, 61	0

The worst 5 of 14 RSRZ outliers are listed below:

Mol	Chain	Res	Type	RSRZ
2	A	307	ASP	4.0
2	A	308	GLY	3.6
2	A	528	ASN	3.5
2	B	308	GLY	3.2
2	A	530	THR	2.8

6.2 Non-standard residues in protein, DNA, RNA chains [i](#)

There are no non-standard protein/DNA/RNA residues in this entry.

6.3 Carbohydrates [i](#)

There are no carbohydrates in this entry.

6.4 Ligands [i](#)

In the following table, the Atoms column lists the number of modelled atoms in the group and the number defined in the chemical component dictionary. LLDF column lists the quality of electron density of the group with respect to its neighbouring residues in protein, DNA or RNA chains. The B-factors column lists the minimum, median, 95th percentile and maximum values of B factors

of atoms in the group. The column labelled 'Q< 0.9' lists the number of atoms with occupancy less than 0.9.

Mol	Type	Chain	Res	Atoms	RSCC	RSR	LLDF	B-factors(\AA^2)	Q<0.9
5	OTS	A	995[A]	11/11	0.96	0.13	2.33	17,21,31,34	11
6	OTR	A	996[B]	11/11	0.97	0.12	2.04	17,21,31,34	11
5	OTS	B	997[A]	11/11	0.91	0.17	1.75	17,21,28,28	11
6	OTR	B	998[B]	11/11	0.90	0.16	1.65	17,21,28,28	11
4	SPM	A	999	10/14	0.88	0.15	0.80	27,31,42,45	0
3	VO4	A	699	3/5	0.99	0.09	-0.85	10,10,15,15	0
3	VO4	B	699	3/5	0.99	0.08	-1.18	13,13,14,15	0

6.5 Other polymers [i](#)

There are no such residues in this entry.