



Full wwPDB X-ray Structure Validation Report ⓘ

Feb 14, 2017 – 09:25 pm GMT

PDB ID : 4RHE
Title : Crystal structure of UbiX, an aromatic acid decarboxylase from the *Colwellia psychrerythraea* 34H
Authors : Do, H.; Kim, S.J.; Lee, C.W.; Kim, H.-W.; Park, H.H.; Kim, H.M.; Park, H.; Park, H.J.; Lee, J.H.
Deposited on : 2014-10-02
Resolution : 2.00 Å(reported)

This is a Full wwPDB X-ray Structure Validation Report for a publicly released PDB entry.

We welcome your comments at validation@mail.wwpdb.org

A user guide is available at

<http://wwpdb.org/validation/2016/XrayValidationReportHelp>

with specific help available everywhere you see the ⓘ symbol.

The following versions of software and data (see [references ⓘ](#)) were used in the production of this report:

MolProbity : 4.02b-467
Mogul : 1.7.2 (RC1), CSD as538be (2017)
Xtriage (Phenix) : 1.9-1692
EDS : trunk28620
Percentile statistics : 20161228.v01 (using entries in the PDB archive December 28th 2016)
Refmac : 5.8.0135
CCP4 : 6.5.0
Ideal geometry (proteins) : Engh & Huber (2001)
Ideal geometry (DNA, RNA) : Parkinson et al. (1996)
Validation Pipeline (wwPDB-VP) : recalc28949

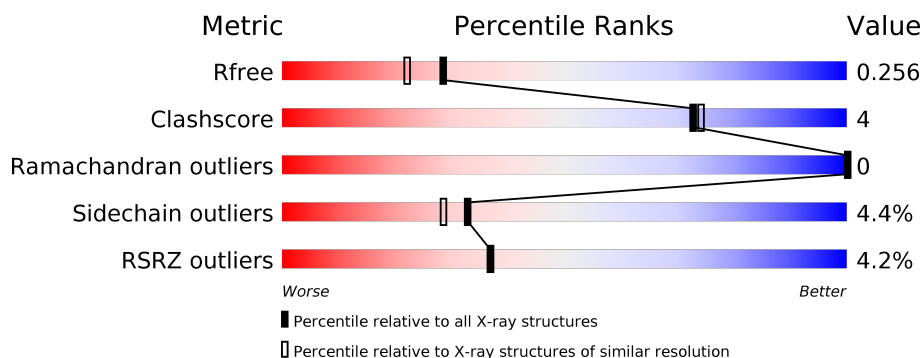
1 Overall quality at a glance

The following experimental techniques were used to determine the structure:

X-RAY DIFFRACTION

The reported resolution of this entry is 2.00 Å.

Percentile scores (ranging between 0-100) for global validation metrics of the entry are shown in the following graphic. The table shows the number of entries on which the scores are based.



Metric	Whole archive (#Entries)	Similar resolution (#Entries, resolution range(Å))
R_{free}	100719	6609 (2.00-2.00)
Clashscore	112137	7775 (2.00-2.00)
Ramachandran outliers	110173	7679 (2.00-2.00)
Sidechain outliers	110143	7678 (2.00-2.00)
RSRZ outliers	101464	6696 (2.00-2.00)

The table below summarises the geometric issues observed across the polymeric chains and their fit to the electron density. The red, orange, yellow and green segments on the lower bar indicate the fraction of residues that contain outliers for ≥ 3 , 2, 1 and 0 types of geometric quality criteria. A grey segment represents the fraction of residues that are not modelled. The numeric value for each fraction is indicated below the corresponding segment, with a dot representing fractions $\leq 5\%$. The upper red bar (where present) indicates the fraction of residues that have poor fit to the electron density. The numeric value is given above the bar.

Mol	Chain	Length	Quality of chain
1	A	209	<div> <div>4%</div> <div> <div></div> <div>89%</div> <div>7%</div> <div></div> </div> <div></div> </div>
1	B	209	<div> <div>4%</div> <div> <div></div> <div>87%</div> <div>10%</div> <div></div> </div> <div></div> </div>
1	C	209	<div> <div>4%</div> <div> <div></div> <div>87%</div> <div>8%</div> <div></div> </div> <div></div> </div>
1	D	209	<div> <div>4%</div> <div> <div></div> <div>81%</div> <div>15%</div> <div></div> </div> <div></div> </div>
1	E	209	<div> <div>6%</div> <div> <div></div> <div>86%</div> <div>10%</div> <div></div> </div> <div></div> </div>
1	F	209	<div> <div>3%</div> <div> <div></div> <div>86%</div> <div>8%</div> <div></div> </div> <div></div> </div>

2 Entry composition

There are 4 unique types of molecules in this entry. The entry contains 9668 atoms, of which 0 are hydrogens and 0 are deuteriums.

In the tables below, the ZeroOcc column contains the number of atoms modelled with zero occupancy, the AltConf column contains the number of residues with at least one atom in alternate conformation and the Trace column contains the number of residues modelled with at most 2 atoms.

- Molecule 1 is a protein called 3-octaprenyl-4-hydroxybenzoate carboxy-lyase.

Mol	Chain	Residues	Atoms					ZeroOcc	AltConf	Trace
1	A	202	Total	C	N	O	S	0	0	0
			1543	979	258	292	14			
1	B	203	Total	C	N	O	S	0	0	0
			1551	983	260	294	14			
1	C	201	Total	C	N	O	S	0	0	0
			1535	975	256	290	14			
1	D	202	Total	C	N	O	S	0	0	0
			1543	979	258	292	14			
1	E	202	Total	C	N	O	S	0	0	0
			1543	979	258	292	14			
1	F	202	Total	C	N	O	S	0	0	0
			1543	979	258	292	14			

There are 18 discrepancies between the modelled and reference sequences:

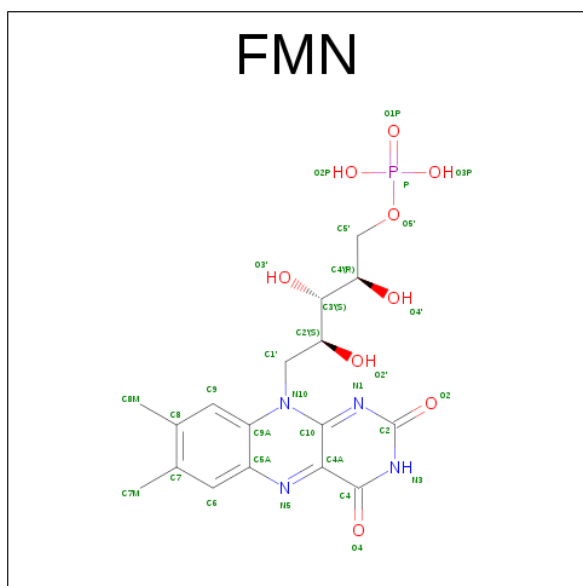
Chain	Residue	Modelled	Actual	Comment	Reference
A	-2	GLY	-	EXPRESSION TAG	UNP Q489U8
A	-1	SER	-	EXPRESSION TAG	UNP Q489U8
A	0	HIS	-	EXPRESSION TAG	UNP Q489U8
B	-2	GLY	-	EXPRESSION TAG	UNP Q489U8
B	-1	SER	-	EXPRESSION TAG	UNP Q489U8
B	0	HIS	-	EXPRESSION TAG	UNP Q489U8
C	-2	GLY	-	EXPRESSION TAG	UNP Q489U8
C	-1	SER	-	EXPRESSION TAG	UNP Q489U8
C	0	HIS	-	EXPRESSION TAG	UNP Q489U8
D	-2	GLY	-	EXPRESSION TAG	UNP Q489U8
D	-1	SER	-	EXPRESSION TAG	UNP Q489U8
D	0	HIS	-	EXPRESSION TAG	UNP Q489U8
E	-2	GLY	-	EXPRESSION TAG	UNP Q489U8
E	-1	SER	-	EXPRESSION TAG	UNP Q489U8
E	0	HIS	-	EXPRESSION TAG	UNP Q489U8
F	-2	GLY	-	EXPRESSION TAG	UNP Q489U8
F	-1	SER	-	EXPRESSION TAG	UNP Q489U8

Continued on next page...

Continued from previous page...

Chain	Residue	Modelled	Actual	Comment	Reference
F	0	HIS	-	EXPRESSION TAG	UNP Q489U8

- Molecule 2 is FLAVIN MONONUCLEOTIDE (three-letter code: FMN) (formula: $C_{17}H_{21}N_4O_9P$).



Mol	Chain	Residues	Atoms					ZeroOcc	AltConf
2	A	1	Total	C	N	O	P	0	0
			31	17	4	9	1		
2	B	1	Total	C	N	O	P	0	0
			31	17	4	9	1		
2	C	1	Total	C	N	O	P	0	0
			31	17	4	9	1		
2	D	1	Total	C	N	O	P	0	0
			31	17	4	9	1		
2	E	1	Total	C	N	O	P	0	0
			31	17	4	9	1		
2	F	1	Total	C	N	O	P	0	0
			31	17	4	9	1		

- Molecule 3 is SULFATE ION (three-letter code: SO4) (formula: O_4S).



Mol	Chain	Residues	Atoms			ZeroOcc	AltConf
3	A	1	Total	O	S	0	0
			5	4	1		
3	A	1	Total	O	S	0	0
			5	4	1		
3	B	1	Total	O	S	0	0
			5	4	1		
3	B	1	Total	O	S	0	0
			5	4	1		
3	C	1	Total	O	S	0	0
			5	4	1		
3	E	1	Total	O	S	0	0
			5	4	1		

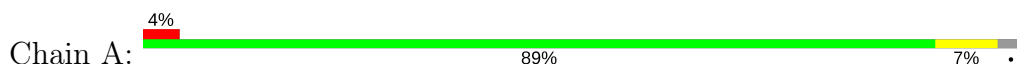
- Molecule 4 is water.

Mol	Chain	Residues	Atoms		ZeroOcc	AltConf
4	A	32	Total	O	0	0
			32	32		
4	B	48	Total	O	0	0
			48	48		
4	C	27	Total	O	0	0
			27	27		
4	D	36	Total	O	0	0
			36	36		
4	E	25	Total	O	0	0
			25	25		
4	F	26	Total	O	0	0
			26	26		

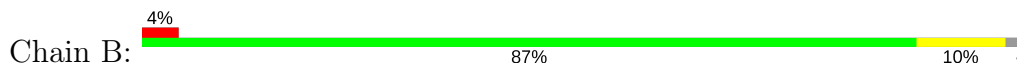
3 Residue-property plots [i](#)

These plots are drawn for all protein, RNA and DNA chains in the entry. The first graphic for a chain summarises the proportions of the various outlier classes displayed in the second graphic. The second graphic shows the sequence view annotated by issues in geometry and electron density. Residues are color-coded according to the number of geometric quality criteria for which they contain at least one outlier: green = 0, yellow = 1, orange = 2 and red = 3 or more. A red dot above a residue indicates a poor fit to the electron density ($RSRZ > 2$). Stretches of 2 or more consecutive residues without any outlier are shown as a green connector. Residues present in the sample, but not in the model, are shown in grey.

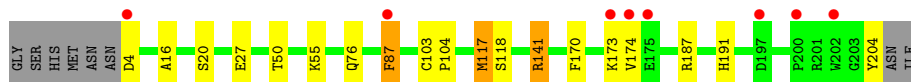
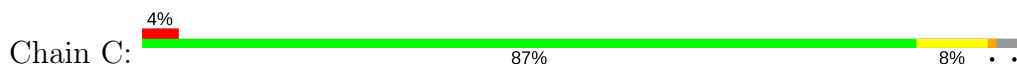
- Molecule 1: 3-octaprenyl-4-hydroxybenzoate carboxy-lyase



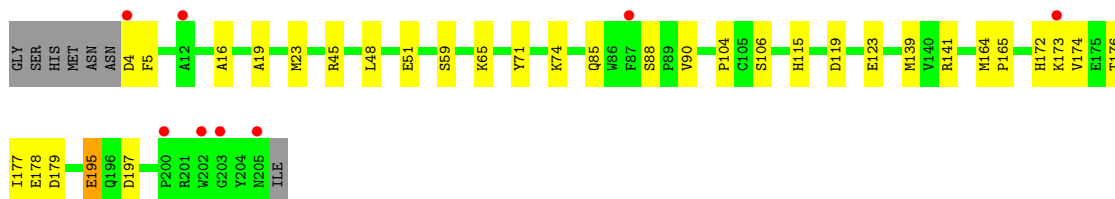
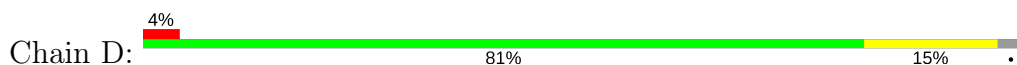
- Molecule 1: 3-octaprenyl-4-hydroxybenzoate carboxy-lyase



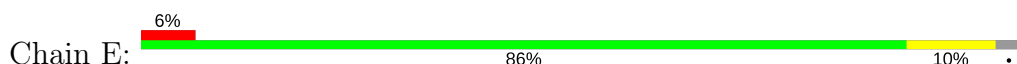
- Molecule 1: 3-octaprenyl-4-hydroxybenzoate carboxy-lyase



- Molecule 1: 3-octaprenyl-4-hydroxybenzoate carboxy-lyase

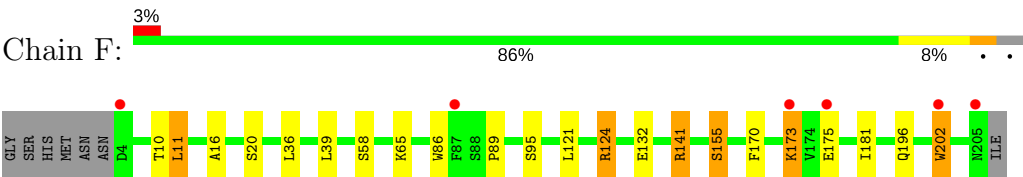


- Molecule 1: 3-octaprenyl-4-hydroxybenzoate carboxy-lyase





● Molecule 1: 3-octaprenyl-4-hydroxybenzoate carboxy-lyase



4 Data and refinement statistics

Property	Value	Source
Space group	C 2 2 21	Depositor
Cell constants a, b, c, α , β , γ	107.20Å 141.91Å 170.07Å 90.00° 90.00° 90.00°	Depositor
Resolution (Å)	76.42 – 2.00 27.44 – 2.00	Depositor EDS
% Data completeness (in resolution range)	96.4 (76.42-2.00) 96.4 (27.44-2.00)	Depositor EDS
R_{merge}	0.12	Depositor
R_{sym}	(Not available)	Depositor
$\langle I/\sigma(I) \rangle$ ¹	11.44 (at 2.01Å)	Xtriage
Refinement program	REFMAC 5.8.0049	Depositor
R, R_{free}	0.202 , 0.250 0.211 , 0.256	Depositor DCC
R_{free} test set	4216 reflections (5.28%)	DCC
Wilson B-factor (Å ²)	23.7	Xtriage
Anisotropy	0.353	Xtriage
Bulk solvent k_{sol} (e/Å ³), B_{sol} (Å ²)	0.39 , 42.1	EDS
L-test for twinning ²	$\langle L \rangle = 0.50$, $\langle L^2 \rangle = 0.34$	Xtriage
Estimated twinning fraction	No twinning to report.	Xtriage
F_o, F_c correlation	0.94	EDS
Total number of atoms	9668	wwPDB-VP
Average B, all atoms (Å ²)	28.0	wwPDB-VP

Xtriage's analysis on translational NCS is as follows: *The largest off-origin peak in the Patterson function is 3.80% of the height of the origin peak. No significant pseudotranslation is detected.*

¹Intensities estimated from amplitudes.

²Theoretical values of $\langle |L| \rangle$, $\langle L^2 \rangle$ for acentric reflections are 0.5, 0.333 respectively for untwinned datasets, and 0.375, 0.2 for perfectly twinned datasets.

5 Model quality [i](#)

5.1 Standard geometry [i](#)

Bond lengths and bond angles in the following residue types are not validated in this section: FMN, SO4

The Z score for a bond length (or angle) is the number of standard deviations the observed value is removed from the expected value. A bond length (or angle) with $|Z| > 5$ is considered an outlier worth inspection. RMSZ is the root-mean-square of all Z scores of the bond lengths (or angles).

Mol	Chain	Bond lengths		Bond angles	
		RMSZ	$\# Z > 5$	RMSZ	$\# Z > 5$
1	A	0.94	1/1572 (0.1%)	0.92	0/2129
1	B	0.99	1/1580 (0.1%)	0.95	3/2140 (0.1%)
1	C	0.97	0/1564	0.99	5/2118 (0.2%)
1	D	0.96	1/1572 (0.1%)	0.93	2/2129 (0.1%)
1	E	0.91	0/1572	0.90	2/2129 (0.1%)
1	F	0.91	2/1572 (0.1%)	0.90	3/2129 (0.1%)
All	All	0.95	5/9432 (0.1%)	0.93	15/12774 (0.1%)

All (5) bond length outliers are listed below:

Mol	Chain	Res	Type	Atoms	Z	Observed(Å)	Ideal(Å)
1	B	155	SER	CB-OG	-7.14	1.32	1.42
1	D	51	GLU	CD-OE1	5.36	1.31	1.25
1	A	142	GLU	CD-OE1	5.35	1.31	1.25
1	F	202	TRP	CB-CG	5.22	1.59	1.50
1	F	155	SER	CB-OG	-5.04	1.35	1.42

All (15) bond angle outliers are listed below:

Mol	Chain	Res	Type	Atoms	Z	Observed(°)	Ideal(°)
1	B	141	ARG	NE-CZ-NH1	7.16	123.88	120.30
1	C	141	ARG	NE-CZ-NH1	7.01	123.80	120.30
1	C	187	ARG	NE-CZ-NH1	7.00	123.80	120.30
1	B	141	ARG	NE-CZ-NH2	-6.84	116.88	120.30
1	C	117	MET	CG-SD-CE	6.07	109.91	100.20
1	F	141	ARG	NE-CZ-NH2	6.02	123.31	120.30
1	D	45	ARG	NE-CZ-NH2	-5.93	117.34	120.30
1	C	27	GLU	OE1-CD-OE2	-5.62	116.55	123.30
1	F	124	ARG	NE-CZ-NH1	5.44	123.02	120.30
1	E	182	ASP	CB-CG-OD1	5.38	123.14	118.30

Continued on next page...

Continued from previous page...

Mol	Chain	Res	Type	Atoms	Z	Observed(°)	Ideal(°)
1	F	141	ARG	NE-CZ-NH1	-5.30	117.65	120.30
1	E	24	ARG	NE-CZ-NH1	5.28	122.94	120.30
1	C	187	ARG	NE-CZ-NH2	-5.12	117.74	120.30
1	D	45	ARG	NE-CZ-NH1	5.10	122.85	120.30
1	B	190	ASP	CB-CG-OD1	5.07	122.86	118.30

There are no chirality outliers.

There are no planarity outliers.

5.2 Too-close contacts

In the following table, the Non-H and H(model) columns list the number of non-hydrogen atoms and hydrogen atoms in the chain respectively. The H(added) column lists the number of hydrogen atoms added and optimized by MolProbity. The Clashes column lists the number of clashes within the asymmetric unit, whereas Symm-Clashes lists symmetry related clashes.

Mol	Chain	Non-H	H(model)	H(added)	Clashes	Symm-Clashes
1	A	1543	0	1551	9	0
1	B	1551	0	1557	8	0
1	C	1535	0	1545	9	0
1	D	1543	0	1551	19	0
1	E	1543	0	1551	15	0
1	F	1543	0	1551	15	0
2	A	31	0	19	3	0
2	B	31	0	19	0	0
2	C	31	0	19	0	0
2	D	31	0	19	3	0
2	E	31	0	19	2	0
2	F	31	0	19	1	0
3	A	10	0	0	0	0
3	B	10	0	0	0	0
3	C	5	0	0	0	0
3	E	5	0	0	0	0
4	A	32	0	0	4	0
4	B	48	0	0	1	0
4	C	27	0	0	0	0
4	D	36	0	0	7	0
4	E	25	0	0	0	0
4	F	26	0	0	2	0
All	All	9668	0	9420	74	0

The all-atom clashscore is defined as the number of clashes found per 1000 atoms (including hydrogen atoms). The all-atom clashscore for this structure is 4.

All (74) close contacts within the same asymmetric unit are listed below, sorted by their clash magnitude.

Atom-1	Atom-2	Interatomic distance (Å)	Clash overlap (Å)
4:A:413:HOH:O	1:E:115:HIS:HD2	1.57	0.85
1:A:115:HIS:CE1	4:A:413:HOH:O	2.31	0.83
1:D:19:ALA:HB1	1:D:48:LEU:HD23	1.66	0.76
1:D:115:HIS:NE2	4:D:407:HOH:O	2.17	0.69
2:D:301:FMN:N1	4:D:433:HOH:O	2.28	0.67
1:E:176:THR:HG22	1:E:178:GLU:H	1.59	0.66
2:D:301:FMN:C2	4:D:433:HOH:O	2.44	0.66
1:B:33:ASN:OD1	1:B:74:LYS:HE2	1.96	0.65
1:D:176:THR:HG22	1:D:179:ASP:OD2	1.98	0.64
1:A:176:THR:C	1:D:177:ILE:HD11	2.19	0.62
1:F:11:LEU:HD22	1:F:11:LEU:N	2.16	0.61
1:D:174:VAL:O	1:D:174:VAL:HG23	2.01	0.60
1:D:195:GLU:OE1	1:D:195:GLU:HA	2.02	0.58
1:E:45:ARG:NH1	1:E:56:ILE:HG22	2.19	0.58
1:E:87:PHE:CD1	1:E:87:PHE:O	2.59	0.55
1:E:174:VAL:HG11	1:E:180:LEU:CD2	2.38	0.53
1:C:191:HIS:HE1	1:F:132:GLU:OE1	1.91	0.53
2:D:301:FMN:C10	4:D:433:HOH:O	2.57	0.53
1:E:45:ARG:HH12	1:E:56:ILE:HG22	1.74	0.53
1:A:188:VAL:HG12	1:A:192:LEU:HD22	1.92	0.52
1:F:10:THR:C	1:F:11:LEU:HD22	2.30	0.51
1:D:5:PHE:CE1	1:D:74:LYS:HE3	2.46	0.51
1:A:174:VAL:O	1:A:174:VAL:HG23	2.11	0.51
1:F:11:LEU:N	1:F:11:LEU:CD2	2.74	0.50
1:C:55:LYS:C	1:C:55:LYS:HD3	2.32	0.50
1:D:5:PHE:HE1	1:D:74:LYS:HE3	1.76	0.50
1:F:89:PRO:O	1:F:95:SER:OG	2.28	0.50
1:C:16:ALA:HB3	1:C:104:PRO:HB2	1.94	0.50
1:A:145:PHE:CE2	1:D:165:PRO:HG3	2.47	0.50
1:C:87:PHE:C	1:C:87:PHE:CD1	2.85	0.50
1:C:204:TYR:HE1	4:F:422:HOH:O	1.95	0.50
1:E:139:MET:HA	1:E:164:MET:O	2.13	0.49
1:A:115:HIS:HE1	4:A:413:HOH:O	1.83	0.49
1:F:39:LEU:HD22	1:F:121:LEU:HD23	1.95	0.49
1:D:172:HIS:CE1	1:D:174:VAL:HG12	2.49	0.48
1:A:16:ALA:HA	2:A:301:FMN:C4A	2.43	0.48
2:E:301:FMN:HM81	1:F:86:TRP:CB	2.44	0.48

Continued on next page...

Continued from previous page...

Atom-1	Atom-2	Interatomic distance (Å)	Clash overlap (Å)
1:D:16:ALA:HA	4:D:433:HOH:O	2.12	0.48
1:A:16:ALA:HB2	1:A:106:SER:HA	1.95	0.48
1:F:124:ARG:NE	4:F:422:HOH:O	2.44	0.48
1:D:88:SER:OG	1:D:90:VAL:HG22	2.14	0.47
1:B:16:ALA:HB3	1:B:104:PRO:HB2	1.97	0.47
1:A:124:ARG:HB2	4:A:407:HOH:O	2.15	0.47
1:C:117:MET:O	1:C:118:SER:C	2.52	0.46
2:A:301:FMN:HM81	1:E:86:TRP:HB3	1.98	0.46
1:F:11:LEU:HD21	1:F:36:LEU:HD22	1.97	0.46
1:E:174:VAL:HG11	1:E:180:LEU:HD21	1.98	0.45
1:F:20:SER:HB3	1:F:181:ILE:HD13	1.97	0.45
1:D:119:ASP:HB2	1:D:123:GLU:OE1	2.16	0.45
1:B:139:MET:HA	1:B:164:MET:O	2.16	0.45
1:C:103:CYS:HA	1:C:104:PRO:HA	1.74	0.45
1:B:118:SER:C	4:B:406:HOH:O	2.55	0.44
1:D:139:MET:HA	1:D:164:MET:O	2.17	0.44
1:F:173:LYS:CD	1:F:173:LYS:H	2.31	0.44
1:B:88:SER:OG	1:B:90:VAL:HG22	2.18	0.43
1:F:16:ALA:HA	2:F:301:FMN:C4A	2.48	0.43
1:B:10:THR:O	1:B:100:MET:HA	2.18	0.43
1:D:16:ALA:HB3	1:D:104:PRO:HB2	2.00	0.43
2:E:301:FMN:HM81	1:F:86:TRP:HB3	1.99	0.43
2:A:301:FMN:HM81	1:E:86:TRP:CB	2.48	0.43
1:D:106:SER:CB	4:D:433:HOH:O	2.66	0.43
1:E:174:VAL:HG11	1:E:180:LEU:HD23	2.01	0.42
1:E:19:ALA:HB1	1:E:48:LEU:HD23	2.01	0.42
1:E:45:ARG:NH1	1:E:57:PRO:O	2.53	0.42
1:C:191:HIS:CE1	1:F:132:GLU:OE1	2.73	0.42
1:C:170:PHE:HA	1:C:174:VAL:HG21	2.01	0.41
1:D:174:VAL:CG2	1:D:174:VAL:O	2.67	0.41
1:E:87:PHE:C	1:E:87:PHE:CD1	2.93	0.41
1:D:16:ALA:CA	4:D:433:HOH:O	2.69	0.41
1:D:23:MET:HE3	1:D:71:TYR:OH	2.21	0.41
1:B:16:ALA:HB2	1:B:106:SER:HA	2.02	0.41
1:B:48:LEU:HD23	1:B:56:ILE:HG13	2.02	0.40
1:E:176:THR:HG22	1:E:178:GLU:N	2.29	0.40
1:F:170:PHE:CD1	1:F:170:PHE:N	2.89	0.40

There are no symmetry-related clashes.

5.3 Torsion angles

5.3.1 Protein backbone

In the following table, the Percentiles column shows the percent Ramachandran outliers of the chain as a percentile score with respect to all X-ray entries followed by that with respect to entries of similar resolution.

The Analysed column shows the number of residues for which the backbone conformation was analysed, and the total number of residues.

Mol	Chain	Analysed	Favoured	Allowed	Outliers	Percentiles	
1	A	200/209 (96%)	196 (98%)	4 (2%)	0	100	100
1	B	201/209 (96%)	199 (99%)	2 (1%)	0	100	100
1	C	199/209 (95%)	196 (98%)	3 (2%)	0	100	100
1	D	200/209 (96%)	193 (96%)	7 (4%)	0	100	100
1	E	200/209 (96%)	197 (98%)	3 (2%)	0	100	100
1	F	200/209 (96%)	198 (99%)	2 (1%)	0	100	100
All	All	1200/1254 (96%)	1179 (98%)	21 (2%)	0	100	100

There are no Ramachandran outliers to report.

5.3.2 Protein sidechains

In the following table, the Percentiles column shows the percent sidechain outliers of the chain as a percentile score with respect to all X-ray entries followed by that with respect to entries of similar resolution.

The Analysed column shows the number of residues for which the sidechain conformation was analysed, and the total number of residues.

Mol	Chain	Analysed	Rotameric	Outliers	Percentiles	
1	A	170/176 (97%)	163 (96%)	7 (4%)	35	31
1	B	171/176 (97%)	165 (96%)	6 (4%)	41	39
1	C	169/176 (96%)	162 (96%)	7 (4%)	35	31
1	D	170/176 (97%)	161 (95%)	9 (5%)	26	21
1	E	170/176 (97%)	163 (96%)	7 (4%)	35	31
1	F	170/176 (97%)	161 (95%)	9 (5%)	26	21
All	All	1020/1056 (97%)	975 (96%)	45 (4%)	33	28

All (45) residues with a non-rotameric sidechain are listed below:

Mol	Chain	Res	Type
1	A	11	LEU
1	A	59	SER
1	A	141	ARG
1	A	173	LYS
1	A	175	GLU
1	A	192	LEU
1	A	202	TRP
1	B	3	ASN
1	B	4	ASP
1	B	141	ARG
1	B	173	LYS
1	B	175	GLU
1	B	205	ASN
1	C	4	ASP
1	C	20	SER
1	C	50	THR
1	C	76	GLN
1	C	87	PHE
1	C	141	ARG
1	C	173	LYS
1	D	4	ASP
1	D	59	SER
1	D	65	LYS
1	D	85	GLN
1	D	141	ARG
1	D	173	LYS
1	D	178	GLU
1	D	195	GLU
1	D	197	ASP
1	E	11	LEU
1	E	50	THR
1	E	55	LYS
1	E	61	ASP
1	E	64	SER
1	E	87	PHE
1	E	141	ARG
1	F	11	LEU
1	F	58	SER
1	F	65	LYS
1	F	141	ARG
1	F	155	SER
1	F	173	LYS

Continued on next page...

Continued from previous page...

Mol	Chain	Res	Type
1	F	175	GLU
1	F	196	GLN
1	F	202	TRP

Some sidechains can be flipped to improve hydrogen bonding and reduce clashes. All (6) such sidechains are listed below:

Mol	Chain	Res	Type
1	A	115	HIS
1	A	205	ASN
1	C	191	HIS
1	D	205	ASN
1	E	115	HIS
1	F	205	ASN

5.3.3 RNA [i](#)

There are no RNA molecules in this entry.

5.4 Non-standard residues in protein, DNA, RNA chains [i](#)

There are no non-standard protein/DNA/RNA residues in this entry.

5.5 Carbohydrates [i](#)

There are no carbohydrates in this entry.

5.6 Ligand geometry [i](#)

12 ligands are modelled in this entry.

In the following table, the Counts columns list the number of bonds (or angles) for which Mogul statistics could be retrieved, the number of bonds (or angles) that are observed in the model and the number of bonds (or angles) that are defined in the chemical component dictionary. The Link column lists molecule types, if any, to which the group is linked. The Z score for a bond length (or angle) is the number of standard deviations the observed value is removed from the expected value. A bond length (or angle) with $|Z| > 2$ is considered an outlier worth inspection. RMSZ is the root-mean-square of all Z scores of the bond lengths (or angles).

Mol	Type	Chain	Res	Link	Bond lengths			Bond angles		
					Counts	RMSZ	# Z > 2	Counts	RMSZ	# Z > 2
2	FMN	A	301	-	31,33,33	1.90	5 (16%)	38,50,50	2.75	11 (28%)
3	SO4	A	302	-	4,4,4	1.09	0	6,6,6	0.79	0
3	SO4	A	303	-	4,4,4	1.01	0	6,6,6	0.64	0
2	FMN	B	301	-	31,33,33	1.77	6 (19%)	38,50,50	2.52	14 (36%)
3	SO4	B	302	-	4,4,4	1.08	0	6,6,6	0.78	0
3	SO4	B	303	-	4,4,4	0.60	0	6,6,6	0.69	0
2	FMN	C	301	-	31,33,33	1.70	6 (19%)	38,50,50	2.56	13 (34%)
3	SO4	C	302	-	4,4,4	0.89	0	6,6,6	0.53	0
2	FMN	D	301	-	31,33,33	1.52	6 (19%)	38,50,50	2.30	9 (23%)
2	FMN	E	301	-	31,33,33	1.71	6 (19%)	38,50,50	2.43	9 (23%)
3	SO4	E	302	-	4,4,4	0.85	0	6,6,6	0.84	0
2	FMN	F	301	-	31,33,33	1.96	7 (22%)	38,50,50	3.04	14 (36%)

In the following table, the Chirals column lists the number of chiral outliers, the number of chiral centers analysed, the number of these observed in the model and the number defined in the chemical component dictionary. Similar counts are reported in the Torsion and Rings columns. '-' means no outliers of that kind were identified.

Mol	Type	Chain	Res	Link	Chirals	Torsions	Rings
2	FMN	A	301	-	-	0/16/18/18	0/3/3/3
3	SO4	A	302	-	-	0/0/0/0	0/0/0/0
3	SO4	A	303	-	-	0/0/0/0	0/0/0/0
2	FMN	B	301	-	-	0/16/18/18	0/3/3/3
3	SO4	B	302	-	-	0/0/0/0	0/0/0/0
3	SO4	B	303	-	-	0/0/0/0	0/0/0/0
2	FMN	C	301	-	-	0/16/18/18	0/3/3/3
3	SO4	C	302	-	-	0/0/0/0	0/0/0/0
2	FMN	D	301	-	-	0/16/18/18	0/3/3/3
2	FMN	E	301	-	-	0/16/18/18	0/3/3/3
3	SO4	E	302	-	-	0/0/0/0	0/0/0/0
2	FMN	F	301	-	-	0/16/18/18	0/3/3/3

All (36) bond length outliers are listed below:

Mol	Chain	Res	Type	Atoms	Z	Observed(Å)	Ideal(Å)
2	D	301	FMN	C6-C5A	-3.54	1.36	1.41
2	B	301	FMN	C1'-N10	-3.47	1.44	1.48
2	C	301	FMN	C1'-N10	-2.47	1.45	1.48
2	D	301	FMN	C8-C7	2.06	1.46	1.41
2	E	301	FMN	C9A-N10	2.07	1.41	1.38
2	D	301	FMN	C4A-N5	2.14	1.36	1.33

Continued on next page...

Continued from previous page...

Mol	Chain	Res	Type	Atoms	Z	Observed(Å)	Ideal(Å)
2	C	301	FMN	C10-N1	2.20	1.36	1.33
2	C	301	FMN	C4-C4A	2.37	1.45	1.41
2	F	301	FMN	C4-N3	2.40	1.37	1.33
2	E	301	FMN	C5'-C4'	2.40	1.55	1.51
2	A	301	FMN	C10-N1	2.76	1.37	1.33
2	B	301	FMN	C8-C7	2.77	1.48	1.41
2	D	301	FMN	C4-C4A	2.81	1.46	1.41
2	D	301	FMN	C9A-C5A	2.92	1.48	1.42
2	E	301	FMN	C8-C7	2.98	1.48	1.41
2	F	301	FMN	C9A-C5A	3.08	1.48	1.42
2	F	301	FMN	C4-C4A	3.12	1.47	1.41
2	E	301	FMN	C4-C4A	3.14	1.47	1.41
2	F	301	FMN	C10-N1	3.16	1.37	1.33
2	B	301	FMN	C4A-C10	3.28	1.46	1.41
2	B	301	FMN	C4-C4A	3.30	1.47	1.41
2	B	301	FMN	C9A-C5A	3.33	1.49	1.42
2	D	301	FMN	C4A-C10	3.38	1.46	1.41
2	C	301	FMN	C8-C7	3.47	1.49	1.41
2	F	301	FMN	C4A-N5	3.68	1.38	1.33
2	C	301	FMN	C9A-C5A	3.76	1.50	1.42
2	A	301	FMN	C8-C7	3.82	1.50	1.41
2	E	301	FMN	C9A-C5A	3.99	1.50	1.42
2	A	301	FMN	C4A-C10	4.28	1.48	1.41
2	A	301	FMN	C9A-C5A	4.31	1.51	1.42
2	F	301	FMN	C9A-N10	4.39	1.44	1.38
2	C	301	FMN	C4A-C10	4.78	1.49	1.41
2	B	301	FMN	C9A-N10	5.03	1.45	1.38
2	E	301	FMN	C4A-C10	5.16	1.50	1.41
2	A	301	FMN	C9A-N10	5.42	1.45	1.38
2	F	301	FMN	C4A-C10	5.70	1.51	1.41

All (70) bond angle outliers are listed below:

Mol	Chain	Res	Type	Atoms	Z	Observed(°)	Ideal(°)
2	F	301	FMN	C4-C4A-C10	-6.46	114.74	119.96
2	B	301	FMN	C4A-C10-N10	-5.88	116.43	120.52
2	F	301	FMN	C4A-C10-N10	-5.77	116.52	120.52
2	E	301	FMN	C4A-C4-N3	-5.47	115.70	123.48
2	A	301	FMN	C4A-C10-N10	-5.01	117.04	120.52
2	A	301	FMN	C4A-C4-N3	-4.96	116.41	123.48
2	D	301	FMN	C4A-C10-N10	-4.78	117.20	120.52
2	D	301	FMN	C4-C4A-C10	-4.75	116.12	119.96

Continued on next page...

Continued from previous page...

Mol	Chain	Res	Type	Atoms	Z	Observed(°)	Ideal(°)
2	B	301	FMN	C4A-C4-N3	-4.74	116.74	123.48
2	C	301	FMN	C4A-C4-N3	-4.63	116.89	123.48
2	C	301	FMN	C4A-C10-N10	-4.17	117.62	120.52
2	F	301	FMN	C4A-C4-N3	-3.99	117.81	123.48
2	E	301	FMN	O2'-C2'-C1'	-3.72	101.18	109.79
2	D	301	FMN	O2'-C2'-C1'	-3.72	101.19	109.79
2	A	301	FMN	C1'-N10-C10	-3.61	114.80	118.50
2	C	301	FMN	O2'-C2'-C1'	-3.39	101.95	109.79
2	A	301	FMN	O2P-P-O5'	-3.20	98.21	106.73
2	E	301	FMN	C4A-C10-N10	-3.14	118.34	120.52
2	D	301	FMN	C4A-C4-N3	-2.99	119.22	123.48
2	F	301	FMN	C4'-C3'-C2'	-2.84	107.29	113.41
2	C	301	FMN	C4'-C3'-C2'	-2.82	107.33	113.41
2	E	301	FMN	O3P-P-O5'	-2.81	99.24	106.73
2	B	301	FMN	C4-C4A-C10	-2.78	117.71	119.96
2	B	301	FMN	C9A-C5A-N5	-2.70	118.22	122.24
2	F	301	FMN	O2'-C2'-C1'	-2.69	103.56	109.79
2	B	301	FMN	C4'-C3'-C2'	-2.64	107.74	113.41
2	B	301	FMN	O5'-P-O1P	-2.57	99.27	106.47
2	A	301	FMN	C9A-C5A-N5	-2.41	118.65	122.24
2	B	301	FMN	C1'-N10-C10	-2.23	116.22	118.50
2	B	301	FMN	O2'-C2'-C1'	-2.21	104.67	109.79
2	B	301	FMN	C1'-C2'-C3'	-2.17	103.62	109.82
2	C	301	FMN	O3P-P-O5'	-2.11	101.11	106.73
2	C	301	FMN	C6-C5A-C9A	2.00	121.60	119.00
2	E	301	FMN	C10-C4A-N5	2.03	122.92	120.59
2	F	301	FMN	C6-C5A-N5	2.09	121.41	118.97
2	C	301	FMN	C10-C4A-N5	2.15	123.06	120.59
2	F	301	FMN	O3'-C3'-C4'	2.16	114.16	108.82
2	E	301	FMN	O2'-C2'-C3'	2.18	114.49	109.09
2	B	301	FMN	O3'-C3'-C4'	2.20	114.26	108.82
2	B	301	FMN	C10-C4A-N5	2.20	123.12	120.59
2	F	301	FMN	C4-C4A-N5	2.27	121.17	118.68
2	D	301	FMN	O3P-P-O2P	2.29	116.87	107.61
2	A	301	FMN	O3'-C3'-C2'	2.30	114.52	108.82
2	F	301	FMN	O2'-C2'-C3'	2.32	114.84	109.09
2	E	301	FMN	C4A-N5-C5A	2.40	119.30	116.76
2	F	301	FMN	C4A-N5-C5A	2.45	119.34	116.76
2	C	301	FMN	O3P-P-O2P	2.55	117.88	107.61
2	D	301	FMN	C4-C4A-N5	2.65	121.58	118.68
2	A	301	FMN	C10-C4A-N5	2.67	123.66	120.59
2	A	301	FMN	O5'-P-O1P	2.74	114.16	106.47

Continued on next page...

Continued from previous page...

Mol	Chain	Res	Type	Atoms	Z	Observed(°)	Ideal(°)
2	F	301	FMN	C10-C4A-N5	3.04	124.09	120.59
2	C	301	FMN	O2'-C2'-C3'	3.24	117.13	109.09
2	C	301	FMN	C4A-N5-C5A	3.46	120.42	116.76
2	D	301	FMN	C1'-N10-C9A	3.59	121.63	118.35
2	C	301	FMN	C5A-C9A-N10	3.66	120.38	117.66
2	B	301	FMN	C1'-N10-C9A	3.92	121.94	118.35
2	D	301	FMN	C4A-N5-C5A	4.03	121.01	116.76
2	A	301	FMN	C4A-N5-C5A	4.73	121.75	116.76
2	E	301	FMN	C1'-N10-C9A	5.02	122.95	118.35
2	F	301	FMN	C5A-C9A-N10	5.04	121.40	117.66
2	B	301	FMN	C4A-N5-C5A	5.11	122.16	116.76
2	C	301	FMN	C1'-N10-C9A	6.06	123.90	118.35
2	F	301	FMN	C1'-N10-C9A	6.35	124.16	118.35
2	A	301	FMN	C1'-N10-C9A	7.27	125.01	118.35
2	D	301	FMN	C4-N3-C2	7.62	121.83	115.16
2	B	301	FMN	C4-N3-C2	8.27	122.39	115.16
2	C	301	FMN	C4-N3-C2	8.55	122.63	115.16
2	A	301	FMN	C4-N3-C2	8.62	122.70	115.16
2	E	301	FMN	C4-N3-C2	9.35	123.34	115.16
2	F	301	FMN	C4-N3-C2	11.03	124.80	115.16

There are no chirality outliers.

There are no torsion outliers.

There are no ring outliers.

4 monomers are involved in 9 short contacts:

Mol	Chain	Res	Type	Clashes	Symm-Clashes
2	A	301	FMN	3	0
2	D	301	FMN	3	0
2	E	301	FMN	2	0
2	F	301	FMN	1	0

5.7 Other polymers [i](#)

There are no such residues in this entry.

5.8 Polymer linkage issues [i](#)

There are no chain breaks in this entry.

6 Fit of model and data

6.1 Protein, DNA and RNA chains

In the following table, the column labelled ‘#RSRZ > 2’ contains the number (and percentage) of RSRZ outliers, followed by percent RSRZ outliers for the chain as percentile scores relative to all X-ray entries and entries of similar resolution. The OWAB column contains the minimum, median, 95th percentile and maximum values of the occupancy-weighted average B-factor per residue. The column labelled ‘Q < 0.9’ lists the number of (and percentage) of residues with an average occupancy less than 0.9.

Mol	Chain	Analysed	<RSRZ>	#RSRZ>2		OWAB(Å ²)	Q<0.9
1	A	202/209 (96%)	0.17	9 (4%)	34 34	15, 25, 43, 71	0
1	B	203/209 (97%)	0.05	8 (3%)	40 40	14, 21, 44, 86	0
1	C	201/209 (96%)	0.11	8 (3%)	39 39	14, 25, 45, 64	0
1	D	202/209 (96%)	0.18	8 (3%)	39 39	13, 25, 48, 71	0
1	E	202/209 (96%)	0.21	12 (5%)	23 23	15, 28, 50, 72	0
1	F	202/209 (96%)	0.26	6 (2%)	51 51	17, 28, 49, 81	0
All	All	1212/1254 (96%)	0.16	51 (4%)	37 37	13, 25, 49, 86	0

All (51) RSRZ outliers are listed below:

Mol	Chain	Res	Type	RSRZ
1	D	202	TRP	8.0
1	F	202	TRP	7.4
1	E	202	TRP	6.0
1	B	3	ASN	5.9
1	A	202	TRP	5.5
1	C	202	TRP	5.5
1	B	202	TRP	5.0
1	B	205	ASN	4.3
1	B	173	LYS	4.2
1	D	205	ASN	4.2
1	A	4	ASP	3.9
1	A	175	GLU	3.9
1	E	174	VAL	3.9
1	E	205	ASN	3.8
1	F	173	LYS	3.6
1	E	87	PHE	3.6
1	D	173	LYS	3.4
1	B	201	ARG	3.4
1	F	87	PHE	3.3

Continued on next page...

Continued from previous page...

Mol	Chain	Res	Type	RSRZ
1	F	175	GLU	3.2
1	D	87	PHE	3.2
1	C	200	PRO	3.2
1	A	174	VAL	3.1
1	E	175	GLU	3.0
1	E	173	LYS	3.0
1	F	205	ASN	2.9
1	B	197	ASP	2.8
1	A	205	ASN	2.7
1	C	173	LYS	2.7
1	C	197	ASP	2.6
1	E	200	PRO	2.5
1	C	4	ASP	2.5
1	C	87	PHE	2.5
1	F	4	ASP	2.4
1	E	201	ARG	2.4
1	E	69	GLU	2.4
1	A	197	ASP	2.4
1	D	200	PRO	2.3
1	D	4	ASP	2.3
1	D	203	GLY	2.3
1	E	166	ALA	2.2
1	C	175	GLU	2.2
1	E	22	ALA	2.2
1	E	83	LYS	2.2
1	B	87	PHE	2.1
1	D	12	ALA	2.1
1	C	174	VAL	2.1
1	A	176	THR	2.1
1	B	195	GLU	2.0
1	A	173	LYS	2.0
1	A	200	PRO	2.0

6.2 Non-standard residues in protein, DNA, RNA chains [i](#)

There are no non-standard protein/DNA/RNA residues in this entry.

6.3 Carbohydrates [i](#)

There are no carbohydrates in this entry.

6.4 Ligands [i](#)

In the following table, the Atoms column lists the number of modelled atoms in the group and the number defined in the chemical component dictionary. LLDF column lists the quality of electron density of the group with respect to its neighbouring residues in protein, DNA or RNA chains. The B-factors column lists the minimum, median, 95th percentile and maximum values of B factors of atoms in the group. The column labelled 'Q< 0.9' lists the number of atoms with occupancy less than 0.9.

Mol	Type	Chain	Res	Atoms	RSCC	RSR	LLDF	B-factors(Å ²)	Q<0.9
2	FMN	B	301	31/31	0.95	0.12	0.61	23,28,32,37	0
2	FMN	A	301	31/31	0.93	0.15	0.53	25,31,38,41	0
2	FMN	E	301	31/31	0.94	0.13	0.13	26,31,36,38	0
2	FMN	C	301	31/31	0.95	0.11	-0.03	21,27,31,32	0
2	FMN	F	301	31/31	0.93	0.13	-0.10	27,31,35,40	0
2	FMN	D	301	31/31	0.95	0.11	-0.46	24,29,32,35	0
3	SO4	A	303	5/5	0.98	0.07	-1.51	23,23,24,26	0
3	SO4	E	302	5/5	0.99	0.07	-1.56	22,23,24,26	0
3	SO4	B	303	5/5	0.99	0.06	-2.05	20,20,21,22	0
3	SO4	A	302	5/5	0.99	0.06	-2.08	18,19,20,21	0
3	SO4	C	302	5/5	0.98	0.07	-2.23	23,25,25,27	0
3	SO4	B	302	5/5	0.98	0.06	-2.93	19,20,21,23	0

6.5 Other polymers [i](#)

There are no such residues in this entry.