



Full wwPDB X-ray Structure Validation Report ⓘ

Dec 13, 2017 – 10:36 PM EST

PDB ID : 4RPI
Title : Crystal Structure of Nicotinate Mononucleotide Adenylyltransferase from Mycobacterium tuberculosis
Authors : Rodionova, I.; Zuccola, H.; Sorci, L.; Aleshin, A.E.; Kazanov, M.; Sergienko, E.; Rubin, E.; Locher, C.; Osterman, A.
Deposited on : unknown
Resolution : 2.42 Å(reported)

This is a Full wwPDB X-ray Structure Validation Report for a publicly released PDB entry.

We welcome your comments at validation@mail.wwpdb.org

A user guide is available at

<http://wwpdb.org/validation/2016/XrayValidationReportHelp>

with specific help available everywhere you see the ⓘ symbol.

The following versions of software and data (see [references ⓘ](#)) were used in the production of this report:

MolProbity	:	4.02b-467
Mogul	:	1.7.2 (RC1), CSD as538be (2017)
Xtriage (Phenix)	:	1.9-1692
EDS	:	rb-20030345
Percentile statistics	:	20161228.v01 (using entries in the PDB archive December 28th 2016)
Refmac	:	5.8.0135
CCP4	:	6.5.0
Ideal geometry (proteins)	:	Engh & Huber (2001)
Ideal geometry (DNA, RNA)	:	Parkinson et al. (1996)
Validation Pipeline (wwPDB-VP)	:	rb-20030345

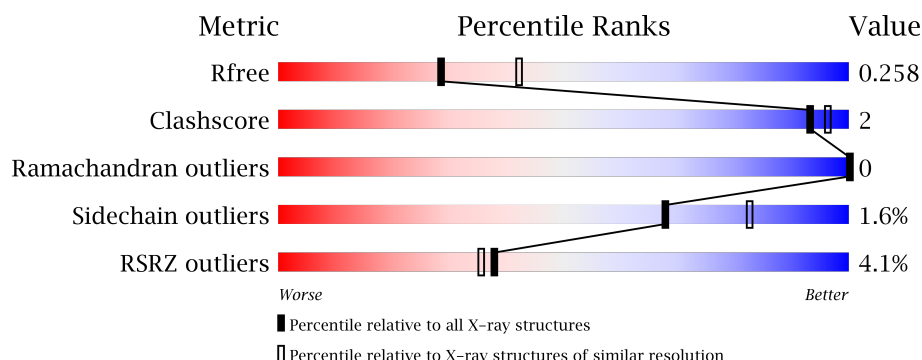
1 Overall quality at a glance

The following experimental techniques were used to determine the structure:

X-RAY DIFFRACTION

The reported resolution of this entry is 2.42 Å.

Percentile scores (ranging between 0-100) for global validation metrics of the entry are shown in the following graphic. The table shows the number of entries on which the scores are based.



Metric	Whole archive (#Entries)	Similar resolution (#Entries, resolution range(Å))
R_{free}	100719	3709 (2.44-2.40)
Clashscore	112137	4241 (2.44-2.40)
Ramachandran outliers	110173	4178 (2.44-2.40)
Sidechain outliers	110143	4179 (2.44-2.40)
RSRZ outliers	101464	3740 (2.44-2.40)

The table below summarises the geometric issues observed across the polymeric chains and their fit to the electron density. The red, orange, yellow and green segments on the lower bar indicate the fraction of residues that contain outliers for ≥ 3 , 2, 1 and 0 types of geometric quality criteria. A grey segment represents the fraction of residues that are not modelled. The numeric value for each fraction is indicated below the corresponding segment, with a dot representing fractions $\leq 5\%$. The upper red bar (where present) indicates the fraction of residues that have poor fit to the electron density. The numeric value is given above the bar.

Mol	Chain	Length	Quality of chain
1	A	223	<div> <div>5%</div> <div> <div></div> <div>82%</div> <div>5%</div> <div>13%</div> </div> </div>
1	B	223	<div> <div>2%</div> <div> <div></div> <div>83%</div> <div>•</div> <div>13%</div> </div> </div>
1	C	223	<div> <div>2%</div> <div> <div></div> <div>80%</div> <div>6%</div> <div>14%</div> </div> </div>
1	D	223	<div> <div>6%</div> <div> <div></div> <div>82%</div> <div>5%</div> <div>13%</div> </div> </div>

The following table lists non-polymeric compounds, carbohydrate monomers and non-standard residues in protein, DNA, RNA chains that are outliers for geometric or electron-density-fit crite-

ria:

Mol	Type	Chain	Res	Chirality	Geometry	Clashes	Electron density
3	DMS	A	302	-	-	-	X
3	DMS	C	302	-	-	-	X
3	DMS	C	303	-	-	-	X

2 Entry composition

There are 4 unique types of molecules in this entry. The entry contains 6266 atoms, of which 0 are hydrogens and 0 are deuteriums.

In the tables below, the ZeroOcc column contains the number of atoms modelled with zero occupancy, the AltConf column contains the number of residues with at least one atom in alternate conformation and the Trace column contains the number of residues modelled with at most 2 atoms.

- Molecule 1 is a protein called nicotinate-nucleotide adenylyltransferase.

Mol	Chain	Residues	Atoms					ZeroOcc	AltConf	Trace
1	A	194	Total	C	N	O	S	0	0	0
			1503	949	262	285	7			
1	B	194	Total	C	N	O	S	0	0	0
			1506	952	262	285	7			
1	C	192	Total	C	N	O	S	0	0	0
			1491	944	257	283	7			
1	D	195	Total	C	N	O	S	0	0	0
			1510	954	263	286	7			

There are 52 discrepancies between the modelled and reference sequences:

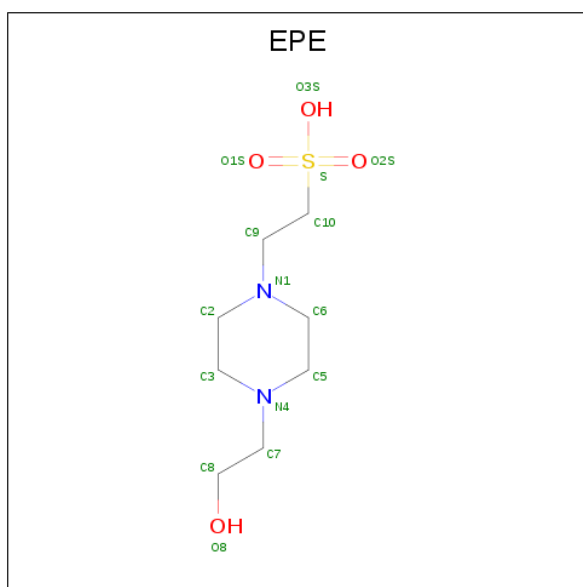
Chain	Residue	Modelled	Actual	Comment	Reference
A	-3	GLY	-	EXPRESSION TAG	UNP W6GSY1
A	-2	ALA	-	EXPRESSION TAG	UNP W6GSY1
A	-1	MET	-	EXPRESSION TAG	UNP W6GSY1
A	0	GLY	-	EXPRESSION TAG	UNP W6GSY1
A	1	MET	-	EXPRESSION TAG	UNP W6GSY1
A	2	HIS	-	EXPRESSION TAG	UNP W6GSY1
A	3	GLY	-	EXPRESSION TAG	UNP W6GSY1
A	4	ARG	-	EXPRESSION TAG	UNP W6GSY1
A	5	ARG	-	EXPRESSION TAG	UNP W6GSY1
A	6	LEU	-	EXPRESSION TAG	UNP W6GSY1
A	7	GLY	-	EXPRESSION TAG	UNP W6GSY1
A	8	VAL	-	EXPRESSION TAG	UNP W6GSY1
A	117	ALA	TRP	ENGINEERED MUTATION	UNP W6GSY1
B	-3	GLY	-	EXPRESSION TAG	UNP W6GSY1
B	-2	ALA	-	EXPRESSION TAG	UNP W6GSY1
B	-1	MET	-	EXPRESSION TAG	UNP W6GSY1
B	0	GLY	-	EXPRESSION TAG	UNP W6GSY1
B	1	MET	-	EXPRESSION TAG	UNP W6GSY1
B	2	HIS	-	EXPRESSION TAG	UNP W6GSY1
B	3	GLY	-	EXPRESSION TAG	UNP W6GSY1
B	4	ARG	-	EXPRESSION TAG	UNP W6GSY1

Continued on next page...

Continued from previous page...

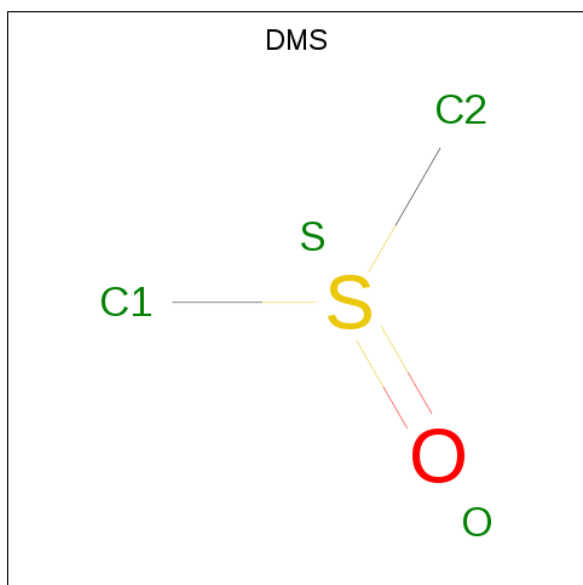
Chain	Residue	Modelled	Actual	Comment	Reference
B	5	ARG	-	EXPRESSION TAG	UNP W6GSY1
B	6	LEU	-	EXPRESSION TAG	UNP W6GSY1
B	7	GLY	-	EXPRESSION TAG	UNP W6GSY1
B	8	VAL	-	EXPRESSION TAG	UNP W6GSY1
B	117	ALA	TRP	ENGINEERED MUTATION	UNP W6GSY1
C	-3	GLY	-	EXPRESSION TAG	UNP W6GSY1
C	-2	ALA	-	EXPRESSION TAG	UNP W6GSY1
C	-1	MET	-	EXPRESSION TAG	UNP W6GSY1
C	0	GLY	-	EXPRESSION TAG	UNP W6GSY1
C	1	MET	-	EXPRESSION TAG	UNP W6GSY1
C	2	HIS	-	EXPRESSION TAG	UNP W6GSY1
C	3	GLY	-	EXPRESSION TAG	UNP W6GSY1
C	4	ARG	-	EXPRESSION TAG	UNP W6GSY1
C	5	ARG	-	EXPRESSION TAG	UNP W6GSY1
C	6	LEU	-	EXPRESSION TAG	UNP W6GSY1
C	7	GLY	-	EXPRESSION TAG	UNP W6GSY1
C	8	VAL	-	EXPRESSION TAG	UNP W6GSY1
C	117	ALA	TRP	ENGINEERED MUTATION	UNP W6GSY1
D	-3	GLY	-	EXPRESSION TAG	UNP W6GSY1
D	-2	ALA	-	EXPRESSION TAG	UNP W6GSY1
D	-1	MET	-	EXPRESSION TAG	UNP W6GSY1
D	0	GLY	-	EXPRESSION TAG	UNP W6GSY1
D	1	MET	-	EXPRESSION TAG	UNP W6GSY1
D	2	HIS	-	EXPRESSION TAG	UNP W6GSY1
D	3	GLY	-	EXPRESSION TAG	UNP W6GSY1
D	4	ARG	-	EXPRESSION TAG	UNP W6GSY1
D	5	ARG	-	EXPRESSION TAG	UNP W6GSY1
D	6	LEU	-	EXPRESSION TAG	UNP W6GSY1
D	7	GLY	-	EXPRESSION TAG	UNP W6GSY1
D	8	VAL	-	EXPRESSION TAG	UNP W6GSY1
D	117	ALA	TRP	ENGINEERED MUTATION	UNP W6GSY1

- Molecule 2 is 4-(2-HYDROXYETHYL)-1-PIPERAZINE ETHANESULFONIC ACID (three-letter code: EPE) (formula: C₈H₁₈N₂O₄S).



Mol	Chain	Residues	Atoms					ZeroOcc	AltConf
2	A	1	Total	C	N	O	S	0	0
			15	8	2	4	1		
2	C	1	Total	C	N	O	S	0	0
			15	8	2	4	1		
2	D	1	Total	C	N	O	S	0	0
			15	8	2	4	1		
2	D	1	Total	C	N	O	S	0	0
			15	8	2	4	1		

- Molecule 3 is DIMETHYL SULFOXIDE (three-letter code: DMS) (formula: C_2H_6OS).

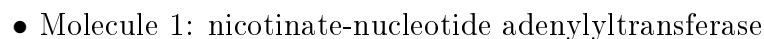
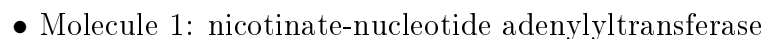
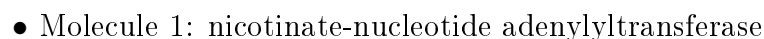


Mol	Chain	Residues	Atoms	ZeroOcc	AltConf
3	A	1	Total C O S 4 2 1 1	0	0
3	B	1	Total C O S 4 2 1 1	0	0
3	B	1	Total C O S 4 2 1 1	0	0
3	C	1	Total C O S 4 2 1 1	0	0
3	C	1	Total C O S 4 2 1 1	0	0
3	D	1	Total C O S 4 2 1 1	0	0
3	D	1	Total C O S 4 2 1 1	0	0

- Molecule 4 is water.

Mol	Chain	Residues	Atoms	ZeroOcc	AltConf
4	A	39	Total O 39 39	0	0
4	B	54	Total O 54 54	0	0
4	C	49	Total O 49 49	0	0
4	D	26	Total O 26 26	0	0

- Molecule 1: nicotinate-nucleotide adenylyltransferase



4 Data and refinement statistics

Property	Value	Source
Space group	P 21 21 21	Depositor
Cell constants a, b, c, α , β , γ	48.98Å 124.13Å 140.35Å 90.00° 90.00° 90.00°	Depositor
Resolution (Å)	33.83 – 2.42 92.98 – 2.42	Depositor EDS
% Data completeness (in resolution range)	94.9 (33.83-2.42) 97.0 (92.98-2.42)	Depositor EDS
R_{merge}	0.13	Depositor
R_{sym}	(Not available)	Depositor
$\langle I/\sigma(I) \rangle$ ¹	1.54 (at 2.42Å)	Xtriage
Refinement program	PHENIX (phenix.refine: 1.9_1692)	Depositor
R, R_{free}	0.229 , 0.258 0.233 , 0.258	Depositor DCC
R_{free} test set	1995 reflections (6.13%)	DCC
Wilson B-factor (Å ²)	37.7	Xtriage
Anisotropy	0.458	Xtriage
Bulk solvent k_{sol} (e/Å ³), B_{sol} (Å ²)	0.35 , 50.2	EDS
L-test for twinning ²	$\langle L \rangle = 0.51$, $\langle L^2 \rangle = 0.34$	Xtriage
Estimated twinning fraction	No twinning to report.	Xtriage
F_o, F_c correlation	0.94	EDS
Total number of atoms	6266	wwPDB-VP
Average B, all atoms (Å ²)	48.0	wwPDB-VP

Xtriage's analysis on translational NCS is as follows: *The analyses of the Patterson function reveals a significant off-origin peak that is 52.26 % of the origin peak, indicating pseudo translational symmetry. The chance of finding a peak of this or larger height randomly in a structure without pseudo translational symmetry is equal to 4.9904e-05. The detected translational NCS is most likely also responsible for the elevated intensity ratio.*

¹ Intensities estimated from amplitudes.

² Theoretical values of $\langle |L| \rangle$, $\langle L^2 \rangle$ for acentric reflections are 0.5, 0.333 respectively for untwinned datasets, and 0.375, 0.2 for perfectly twinned datasets.

5 Model quality [i](#)

5.1 Standard geometry [i](#)

Bond lengths and bond angles in the following residue types are not validated in this section: EPE, DMS

The Z score for a bond length (or angle) is the number of standard deviations the observed value is removed from the expected value. A bond length (or angle) with $|Z| > 5$ is considered an outlier worth inspection. RMSZ is the root-mean-square of all Z scores of the bond lengths (or angles).

Mol	Chain	Bond lengths		Bond angles	
		RMSZ	$\# Z > 5$	RMSZ	$\# Z > 5$
1	A	0.24	0/1535	0.47	0/2085
1	B	0.26	0/1539	0.47	0/2092
1	C	0.27	0/1524	0.48	0/2073
1	D	0.24	0/1543	0.46	0/2097
All	All	0.25	0/6141	0.47	0/8347

There are no bond length outliers.

There are no bond angle outliers.

There are no chirality outliers.

There are no planarity outliers.

5.2 Too-close contacts [i](#)

In the following table, the Non-H and H(model) columns list the number of non-hydrogen atoms and hydrogen atoms in the chain respectively. The H(added) column lists the number of hydrogen atoms added and optimized by MolProbity. The Clashes column lists the number of clashes within the asymmetric unit, whereas Symm-Clashes lists symmetry related clashes.

Mol	Chain	Non-H	H(model)	H(added)	Clashes	Symm-Clashes
1	A	1503	0	1471	5	0
1	B	1506	0	1475	5	0
1	C	1491	0	1459	7	0
1	D	1510	0	1478	7	0
2	A	15	0	17	0	0
2	C	15	0	17	0	0
2	D	30	0	34	2	0
3	A	4	0	6	0	0
3	B	8	0	12	0	0

Continued on next page...

Continued from previous page...

Mol	Chain	Non-H	H(model)	H(added)	Clashes	Symm-Clashes
3	C	8	0	12	0	0
3	D	8	0	12	0	0
4	A	39	0	0	1	0
4	B	54	0	0	0	0
4	C	49	0	0	1	0
4	D	26	0	0	0	0
All	All	6266	0	5993	21	0

The all-atom clashscore is defined as the number of clashes found per 1000 atoms (including hydrogen atoms). The all-atom clashscore for this structure is 2.

All (21) close contacts within the same asymmetric unit are listed below, sorted by their clash magnitude.

Atom-1	Atom-2	Interatomic distance (Å)	Clash overlap (Å)
1:B:179:ARG:NH2	1:D:26:GLU:OE1	2.28	0.67
1:B:26:GLU:OE1	1:D:179:ARG:NH2	2.31	0.64
1:D:70:ARG:NH2	2:D:301:EPE:O3S	2.30	0.64
1:C:5:ARG:NH1	4:C:434:HOH:O	2.34	0.61
1:C:191:GLN:HB3	1:C:195:LYS:HE3	1.91	0.52
1:D:187:ASP:OD2	2:D:302:EPE:N4	2.44	0.51
1:A:26:GLU:OE1	1:C:179:ARG:NH2	2.45	0.48
1:D:191:GLN:HB3	1:D:195:LYS:HE3	1.96	0.48
1:A:177:GLN:OE1	1:A:179:ARG:NH1	2.47	0.47
1:A:172:ARG:NH2	4:A:426:HOH:O	2.48	0.45
1:C:135:PRO:HA	1:C:160:GLU:HG3	1.98	0.45
1:D:141:ASN:HA	1:D:144:ILE:HD12	1.99	0.44
1:B:191:GLN:HB3	1:B:195:LYS:HE3	2.00	0.42
1:A:191:GLN:HB3	1:A:195:LYS:HE3	2.02	0.42
1:D:94:HIS:NE2	1:D:126:LEU:O	2.52	0.41
1:C:123:LEU:HB3	1:C:129:PHE:CZ	2.56	0.41
1:C:43:GLN:HB2	1:C:83:PRO:HA	2.02	0.41
1:B:43:GLN:HB3	1:B:44:PRO:HD2	2.02	0.41
1:A:132:VAL:HG12	1:A:159:VAL:HG22	2.02	0.40
1:B:33:LEU:O	1:B:70:ARG:NH2	2.54	0.40
1:C:68:ASN:HA	1:C:69:PRO:HD2	1.99	0.40

There are no symmetry-related clashes.

5.3 Torsion angles [i](#)

5.3.1 Protein backbone [i](#)

In the following table, the Percentiles column shows the percent Ramachandran outliers of the chain as a percentile score with respect to all X-ray entries followed by that with respect to entries of similar resolution.

The Analysed column shows the number of residues for which the backbone conformation was analysed, and the total number of residues.

Mol	Chain	Analysed	Favoured	Allowed	Outliers	Percentiles	
1	A	190/223 (85%)	185 (97%)	5 (3%)	0	100	100
1	B	190/223 (85%)	184 (97%)	6 (3%)	0	100	100
1	C	188/223 (84%)	183 (97%)	5 (3%)	0	100	100
1	D	191/223 (86%)	188 (98%)	3 (2%)	0	100	100
All	All	759/892 (85%)	740 (98%)	19 (2%)	0	100	100

There are no Ramachandran outliers to report.

5.3.2 Protein sidechains [i](#)

In the following table, the Percentiles column shows the percent sidechain outliers of the chain as a percentile score with respect to all X-ray entries followed by that with respect to entries of similar resolution.

The Analysed column shows the number of residues for which the sidechain conformation was analysed, and the total number of residues.

Mol	Chain	Analysed	Rotameric	Outliers	Percentiles	
1	A	160/177 (90%)	157 (98%)	3 (2%)	62	79
1	B	161/177 (91%)	161 (100%)	0	100	100
1	C	160/177 (90%)	157 (98%)	3 (2%)	62	79
1	D	161/177 (91%)	157 (98%)	4 (2%)	53	72
All	All	642/708 (91%)	632 (98%)	10 (2%)	68	82

All (10) residues with a non-rotameric sidechain are listed below:

Mol	Chain	Res	Type
1	A	94	HIS
1	A	121	GLU

Continued on next page...

Continued from previous page...

Mol	Chain	Res	Type
1	A	134	ARG
1	C	4	ARG
1	C	43	GLN
1	C	150	GLN
1	D	94	HIS
1	D	113	SER
1	D	134	ARG
1	D	160	GLU

Some sidechains can be flipped to improve hydrogen bonding and reduce clashes. All (1) such sidechains are listed below:

Mol	Chain	Res	Type
1	D	143	HIS

5.3.3 RNA [i](#)

There are no RNA molecules in this entry.

5.4 Non-standard residues in protein, DNA, RNA chains [i](#)

There are no non-standard protein/DNA/RNA residues in this entry.

5.5 Carbohydrates [i](#)

There are no carbohydrates in this entry.

5.6 Ligand geometry [i](#)

11 ligands are modelled in this entry.

In the following table, the Counts columns list the number of bonds (or angles) for which Mogul statistics could be retrieved, the number of bonds (or angles) that are observed in the model and the number of bonds (or angles) that are defined in the Chemical Component Dictionary. The Link column lists molecule types, if any, to which the group is linked. The Z score for a bond length (or angle) is the number of standard deviations the observed value is removed from the expected value. A bond length (or angle) with $|Z| > 2$ is considered an outlier worth inspection. RMSZ is the root-mean-square of all Z scores of the bond lengths (or angles).

Mol	Type	Chain	Res	Link	Bond lengths			Bond angles		
					Counts	RMSZ	# Z > 2	Counts	RMSZ	# Z > 2
2	EPE	A	301	-	15,15,15	1.79	2 (13%)	18,20,20	1.69	2 (11%)
3	DMS	A	302	-	3,3,3	0.64	0	3,3,3	0.49	0
3	DMS	B	301	-	3,3,3	0.64	0	3,3,3	0.51	0
3	DMS	B	302	-	3,3,3	0.63	0	3,3,3	0.35	0
2	EPE	C	301	-	15,15,15	2.10	2 (13%)	18,20,20	1.36	2 (11%)
3	DMS	C	302	-	3,3,3	0.63	0	3,3,3	0.59	0
3	DMS	C	303	-	3,3,3	0.64	0	3,3,3	0.45	0
2	EPE	D	301	-	15,15,15	1.43	1 (6%)	18,20,20	1.98	3 (16%)
2	EPE	D	302	-	15,15,15	1.82	2 (13%)	18,20,20	1.65	2 (11%)
3	DMS	D	303	-	3,3,3	0.64	0	3,3,3	0.49	0
3	DMS	D	304	-	3,3,3	0.64	0	3,3,3	0.53	0

In the following table, the Chirals column lists the number of chiral outliers, the number of chiral centers analysed, the number of these observed in the model and the number defined in the Chemical Component Dictionary. Similar counts are reported in the Torsion and Rings columns. '-' means no outliers of that kind were identified.

Mol	Type	Chain	Res	Link	Chirals	Torsions	Rings
2	EPE	A	301	-	-	0/9/19/19	0/1/1/1
3	DMS	A	302	-	-	0/0/0/0	0/0/0/0
3	DMS	B	301	-	-	0/0/0/0	0/0/0/0
3	DMS	B	302	-	-	0/0/0/0	0/0/0/0
2	EPE	C	301	-	-	0/9/19/19	0/1/1/1
3	DMS	C	302	-	-	0/0/0/0	0/0/0/0
3	DMS	C	303	-	-	0/0/0/0	0/0/0/0
2	EPE	D	301	-	-	0/9/19/19	0/1/1/1
2	EPE	D	302	-	-	0/9/19/19	0/1/1/1
3	DMS	D	303	-	-	0/0/0/0	0/0/0/0
3	DMS	D	304	-	-	0/0/0/0	0/0/0/0

All (7) bond length outliers are listed below:

Mol	Chain	Res	Type	Atoms	Z	Observed(Å)	Ideal(Å)
2	A	301	EPE	C9-N1	2.32	1.52	1.47
2	D	302	EPE	C9-N1	2.33	1.52	1.47
2	C	301	EPE	C9-N1	2.69	1.53	1.47
2	D	301	EPE	C10-S	4.47	1.84	1.77
2	A	301	EPE	C10-S	5.98	1.86	1.77
2	D	302	EPE	C10-S	6.15	1.86	1.77
2	C	301	EPE	C10-S	7.12	1.88	1.77

All (9) bond angle outliers are listed below:

Mol	Chain	Res	Type	Atoms	Z	Observed(°)	Ideal(°)
2	D	301	EPE	O2S-S-C10	-7.16	100.65	106.79
2	D	302	EPE	O2S-S-C10	-5.58	102.00	106.79
2	A	301	EPE	O2S-S-C10	-5.49	102.07	106.79
2	C	301	EPE	O3S-S-C10	-3.07	102.28	106.06
2	C	301	EPE	C6-N1-C2	-2.23	103.82	108.87
2	A	301	EPE	O1S-S-C10	-2.15	104.95	106.79
2	D	302	EPE	C6-N1-C2	-2.14	104.02	108.87
2	D	301	EPE	C6-N1-C2	-2.01	104.31	108.87
2	D	301	EPE	O1S-S-C10	2.29	108.76	106.79

There are no chirality outliers.

There are no torsion outliers.

There are no ring outliers.

2 monomers are involved in 2 short contacts:

Mol	Chain	Res	Type	Clashes	Symm-Clashes
2	D	301	EPE	1	0
2	D	302	EPE	1	0

5.7 Other polymers [i](#)

There are no such residues in this entry.

5.8 Polymer linkage issues [i](#)

There are no chain breaks in this entry.

6 Fit of model and data ⓘ

6.1 Protein, DNA and RNA chains ⓘ

In the following table, the column labelled ‘#RSRZ> 2’ contains the number (and percentage) of RSRZ outliers, followed by percent RSRZ outliers for the chain as percentile scores relative to all X-ray entries and entries of similar resolution. The OWAB column contains the minimum, median, 95th percentile and maximum values of the occupancy-weighted average B-factor per residue. The column labelled ‘Q< 0.9’ lists the number of (and percentage) of residues with an average occupancy less than 0.9.

Mol	Chain	Analysed	<RSRZ>	#RSRZ>2	OWAB(Å ²)	Q<0.9
1	A	194/223 (86%)	0.44	11 (5%) 24 22	25, 47, 92, 129	0
1	B	194/223 (86%)	0.19	4 (2%) 64 60	23, 39, 76, 114	0
1	C	192/223 (86%)	0.07	4 (2%) 64 60	23, 39, 71, 117	0
1	D	195/223 (87%)	0.51	13 (6%) 19 16	26, 50, 90, 114	0
All	All	775/892 (86%)	0.30	32 (4%) 38 35	23, 43, 84, 129	0

All (32) RSRZ outliers are listed below:

Mol	Chain	Res	Type	RSRZ
1	A	49	ARG	6.6
1	D	82	GLY	5.4
1	D	200	CYS	5.3
1	A	50	GLN	4.9
1	A	122	GLU	4.6
1	D	120	TRP	4.5
1	D	49	ARG	4.5
1	B	50	GLN	4.3
1	A	118	GLN	4.3
1	A	82	GLY	4.0
1	A	120	TRP	4.0
1	C	43	GLN	3.6
1	D	50	GLN	3.5
1	D	137	TYR	3.5
1	D	121	GLU	3.2
1	A	48	GLY	3.2
1	C	200	CYS	3.1
1	A	125	GLU	2.9
1	D	93	LEU	2.7
1	A	140	ARG	2.6
1	B	51	VAL	2.5

Continued on next page...

Continued from previous page...

Mol	Chain	Res	Type	RSRZ
1	A	126	LEU	2.4
1	B	118	GLN	2.4
1	A	201	GLY	2.4
1	D	122	GLU	2.3
1	D	118	GLN	2.3
1	D	153	LYS	2.2
1	B	122	GLU	2.2
1	D	43	GLN	2.1
1	D	51	VAL	2.1
1	C	119	GLY	2.0
1	C	99	ASP	2.0

6.2 Non-standard residues in protein, DNA, RNA chains [i](#)

There are no non-standard protein/DNA/RNA residues in this entry.

6.3 Carbohydrates [i](#)

There are no carbohydrates in this entry.

6.4 Ligands [i](#)

In the following table, the Atoms column lists the number of modelled atoms in the group and the number defined in the chemical component dictionary. LLDF column lists the quality of electron density of the group with respect to its neighbouring residues in protein, DNA or RNA chains. The B-factors column lists the minimum, median, 95th percentile and maximum values of B factors of atoms in the group. The column labelled 'Q< 0.9' lists the number of atoms with occupancy less than 0.9.

Mol	Type	Chain	Res	Atoms	RSCC	RSR	LLDF	B-factors(Å ²)	Q<0.9
3	DMS	C	302	4/4	0.97	0.20	4.09	39,40,43,52	0
3	DMS	C	303	4/4	0.88	0.25	2.33	60,70,86,87	0
3	DMS	A	302	4/4	0.97	0.20	2.30	33,41,44,62	0
3	DMS	B	302	4/4	0.94	0.24	1.59	55,75,78,78	0
2	EPE	D	302	15/15	0.92	0.19	1.28	29,33,71,72	0
3	DMS	D	303	4/4	0.95	0.19	1.00	39,40,50,50	0
3	DMS	B	301	4/4	0.97	0.17	0.93	40,42,46,61	0
2	EPE	D	301	15/15	0.90	0.17	0.24	26,33,65,67	0
2	EPE	C	301	15/15	0.93	0.17	0.15	28,33,74,84	0
2	EPE	A	301	15/15	0.95	0.16	0.05	25,32,55,58	0

Continued on next page...

Continued from previous page...

Mol	Type	Chain	Res	Atoms	RSCC	RSR	LLDF	B-factors(\AA^2)	Q<0.9
3	DMS	D	304	4/4	0.79	0.25	-	52,53,90,91	0

6.5 Other polymers [i](#)

There are no such residues in this entry.