



Full wwPDB X-ray Structure Validation Report ⓘ

Feb 13, 2017 – 12:21 am GMT

PDB ID : 1RU1
Title : CRYSTAL STRUCTURE OF A TERNARY COMPLEX OF E. COLI HPPK(V83G/DEL84-89) WITH MGAMPCPP AND 6-HYDROXYMETHYL-7,8-DIHYDROPTERIN AT 1.40 ANGSTROM RESOLUTION (MONOCLINIC FORM)
Authors : Blaszczyk, J.; Ji, X.
Deposited on : 2003-12-10
Resolution : 1.40 Å(reported)

This is a Full wwPDB X-ray Structure Validation Report for a publicly released PDB entry.

We welcome your comments at validation@mail.wwpdb.org

A user guide is available at

<http://wwpdb.org/validation/2016/XrayValidationReportHelp>

with specific help available everywhere you see the ⓘ symbol.

The following versions of software and data (see [references ⓘ](#)) were used in the production of this report:

MolProbity	:	4.02b-467
Mogul	:	1.7.2 (RC1), CSD as538be (2017)
Xtriage (Phenix)	:	1.9-1692
EDS	:	trunk28620
Percentile statistics	:	20161228.v01 (using entries in the PDB archive December 28th 2016)
Refmac	:	5.8.0135
CCP4	:	6.5.0
Ideal geometry (proteins)	:	Engh & Huber (2001)
Ideal geometry (DNA, RNA)	:	Parkinson et al. (1996)
Validation Pipeline (wwPDB-VP)	:	recalc28949

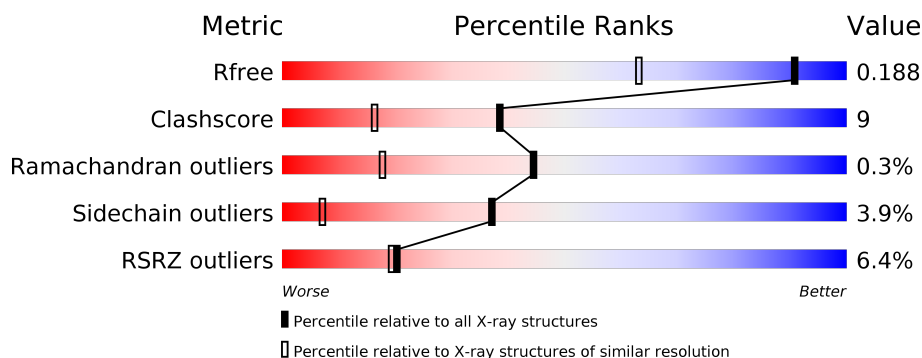
1 Overall quality at a glance

The following experimental techniques were used to determine the structure:

X-RAY DIFFRACTION

The reported resolution of this entry is 1.40 Å.

Percentile scores (ranging between 0-100) for global validation metrics of the entry are shown in the following graphic. The table shows the number of entries on which the scores are based.



Metric	Whole archive (#Entries)	Similar resolution (#Entries, resolution range(Å))
R_{free}	100719	1307 (1.40-1.40)
Clashscore	112137	1411 (1.40-1.40)
Ramachandran outliers	110173	1373 (1.40-1.40)
Sidechain outliers	110143	1372 (1.40-1.40)
RSRZ outliers	101464	1315 (1.40-1.40)

The table below summarises the geometric issues observed across the polymeric chains and their fit to the electron density. The red, orange, yellow and green segments on the lower bar indicate the fraction of residues that contain outliers for ≥ 3 , 2, 1 and 0 types of geometric quality criteria. A grey segment represents the fraction of residues that are not modelled. The numeric value for each fraction is indicated below the corresponding segment, with a dot representing fractions $\leq 5\%$. The upper red bar (where present) indicates the fraction of residues that have poor fit to the electron density. The numeric value is given above the bar.

Mol	Chain	Length	Quality of chain
1	A	152	<div> <div>5%</div> <div> <div></div> <div>80%</div> <div>13%</div> <div>6%</div> </div> </div>
1	B	152	<div> <div>7%</div> <div> <div></div> <div>80%</div> <div>16%</div> <div>6%</div> </div> </div>

2 Entry composition

There are 6 unique types of molecules in this entry. The entry contains 2949 atoms, of which 0 are hydrogens and 0 are deuteriums.

In the tables below, the ZeroOcc column contains the number of atoms modelled with zero occupancy, the AltConf column contains the number of residues with at least one atom in alternate conformation and the Trace column contains the number of residues modelled with at most 2 atoms.

- Molecule 1 is a protein called 2-amino-4-hydroxy-6-hydroxymethyldihydropteridine pyrophosphokinase.

Mol	Chain	Residues	Atoms					ZeroOcc	AltConf	Trace
1	A	143	Total	C	N	O	S	0	1	0
			1147	736	194	212	5			
1	B	152	Total	C	N	O	S	0	6	0
			1226	780	211	231	4			

There are 14 discrepancies between the modelled and reference sequences:

Chain	Residue	Modelled	Actual	Comment	Reference
A	89	GLY	VAL	ENGINEERED	UNP P26281
A	?	-	ARG	DELETION	UNP P26281
A	?	-	LYS	DELETION	UNP P26281
A	?	-	ALA	DELETION	UNP P26281
A	?	-	GLU	DELETION	UNP P26281
A	?	-	ARG	DELETION	UNP P26281
A	?	-	TRP	DELETION	UNP P26281
B	283	GLY	VAL	ENGINEERED	UNP P26281
A	?	-	ARG	DELETION	UNP P26281
A	?	-	LYS	DELETION	UNP P26281
A	?	-	ALA	DELETION	UNP P26281
A	?	-	GLU	DELETION	UNP P26281
A	?	-	ARG	DELETION	UNP P26281
A	?	-	TRP	DELETION	UNP P26281

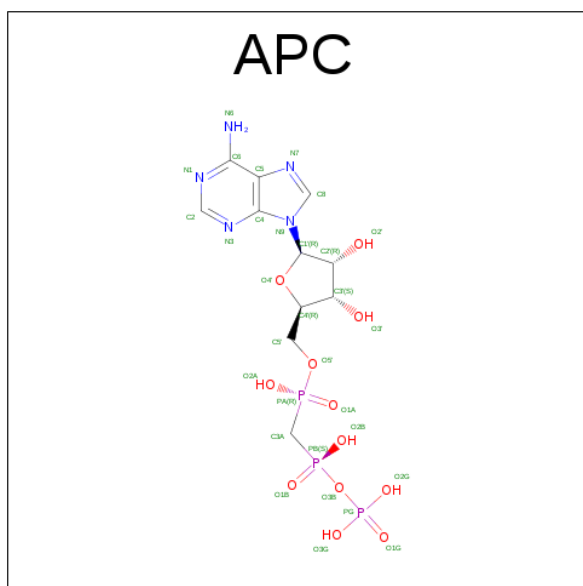
- Molecule 2 is MAGNESIUM ION (three-letter code: MG) (formula: Mg).

Mol	Chain	Residues	Atoms		ZeroOcc	AltConf
2	B	2	Total	Mg	0	0
			2	2		
2	A	2	Total	Mg	0	0
			2	2		

- Molecule 3 is CHLORIDE ION (three-letter code: CL) (formula: Cl).

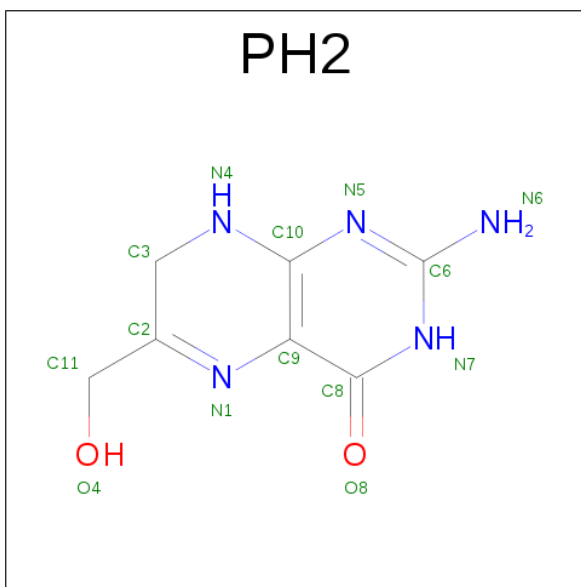
Mol	Chain	Residues	Atoms		ZeroOcc	AltConf
3	A	1	Total	Cl	0	0
			1	1		

- Molecule 4 is DIPHOSPHOMETHYLPHOSPHONIC ACID ADENOSYL ESTER (three-letter code: APC) (formula: C₁₁H₁₈N₅O₁₂P₃).



Mol	Chain	Residues	Atoms					ZeroOcc	AltConf
4	A	1	Total	C	N	O	P	0	0
			31	11	5	12	3		
4	B	1	Total	C	N	O	P	0	0
			31	11	5	12	3		

- Molecule 5 is 2-AMINO-6-HYDROXYMETHYL-7,8-DIHYDRO-3H-PTERIDIN-4-ONE (three-letter code: PH2) (formula: C₇H₉N₅O₂).



Mol	Chain	Residues	Atoms				ZeroOcc	AltConf
5	A	1	Total	C	N	O	0	0
			14	7	5	2		
5	B	1	Total	C	N	O	0	0
			14	7	5	2		

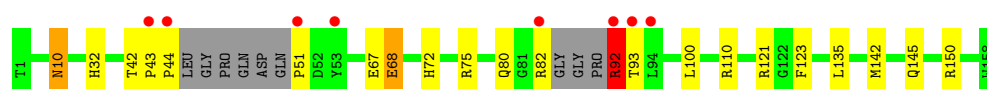
- Molecule 6 is water.

Mol	Chain	Residues	Atoms		ZeroOcc	AltConf
6	A	224	Total	O	0	0
			224	224		
6	B	255	Total	O	0	2
			257	257		

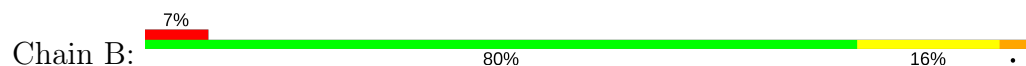
3 Residue-property plots [i](#)

These plots are drawn for all protein, RNA and DNA chains in the entry. The first graphic for a chain summarises the proportions of the various outlier classes displayed in the second graphic. The second graphic shows the sequence view annotated by issues in geometry and electron density. Residues are color-coded according to the number of geometric quality criteria for which they contain at least one outlier: green = 0, yellow = 1, orange = 2 and red = 3 or more. A red dot above a residue indicates a poor fit to the electron density ($RSRZ > 2$). Stretches of 2 or more consecutive residues without any outlier are shown as a green connector. Residues present in the sample, but not in the model, are shown in grey.

- Molecule 1: 2-amino-4-hydroxy-6-hydroxymethyldihydropteridine pyrophosphokinase



- Molecule 1: 2-amino-4-hydroxy-6-hydroxymethyldihydropteridine pyrophosphokinase



4 Data and refinement statistics

Property	Value	Source
Space group	P 1 21 1	Depositor
Cell constants a, b, c, α , β , γ	52.80Å 68.75Å 36.49Å 90.00° 90.50° 90.00°	Depositor
Resolution (Å)	30.00 – 1.40 25.02 – 1.40	Depositor EDS
% Data completeness (in resolution range)	89.4 (30.00-1.40) 90.9 (25.02-1.40)	Depositor EDS
R_{merge}	0.06	Depositor
R_{sym}	(Not available)	Depositor
$\langle I/\sigma(I) \rangle$ ¹	2.34 (at 1.40Å)	Xtriage
Refinement program	SHELXL-97	Depositor
R, R_{free}	0.135 , 0.198 0.141 , 0.188	Depositor DCC
R_{free} test set	2183 reflections (5.30%)	DCC
Wilson B-factor (Å ²)	11.5	Xtriage
Anisotropy	0.446	Xtriage
Bulk solvent k_{sol} (e/Å ³), B_{sol} (Å ²)	0.29 , 54.9	EDS
L-test for twinning ²	$\langle L \rangle = 0.46$, $\langle L^2 \rangle = 0.29$	Xtriage
Estimated twinning fraction	0.108 for -h,-k,l	Xtriage
F_o, F_c correlation	0.97	EDS
Total number of atoms	2949	wwPDB-VP
Average B, all atoms (Å ²)	21.0	wwPDB-VP

Xtriage's analysis on translational NCS is as follows: *The largest off-origin peak in the Patterson function is 11.62% of the height of the origin peak. No significant pseudotranslation is detected.*

¹Intensities estimated from amplitudes.

²Theoretical values of $\langle |L| \rangle$, $\langle L^2 \rangle$ for acentric reflections are 0.5, 0.333 respectively for untwinned datasets, and 0.375, 0.2 for perfectly twinned datasets.

5 Model quality

5.1 Standard geometry

Bond lengths and bond angles in the following residue types are not validated in this section: PH2, MG, CL, APC

The Z score for a bond length (or angle) is the number of standard deviations the observed value is removed from the expected value. A bond length (or angle) with $|Z| > 5$ is considered an outlier worth inspection. RMSZ is the root-mean-square of all Z scores of the bond lengths (or angles).

Mol	Chain	Bond lengths		Bond angles	
		RMSZ	# $ Z > 5$	RMSZ	# $ Z > 5$
1	A	0.54	0/1178	1.26	8/1599 (0.5%)
1	B	0.54	0/1287	1.48	11/1752 (0.6%)
All	All	0.54	0/2465	1.38	19/3351 (0.6%)

There are no bond length outliers.

All (19) bond angle outliers are listed below:

Mol	Chain	Res	Type	Atoms	Z	Observed(°)	Ideal(°)
1	B	275	ARG	NE-CZ-NH2	24.46	132.53	120.30
1	A	75	ARG	NE-CZ-NH2	17.63	129.11	120.30
1	B	275	ARG	NE-CZ-NH1	-10.49	115.06	120.30
1	B	344[A]	ARG	NE-CZ-NH2	-10.02	115.29	120.30
1	B	344[B]	ARG	NE-CZ-NH2	-10.02	115.29	120.30
1	B	292	ARG	NE-CZ-NH1	8.48	124.54	120.30
1	B	282	ARG	NE-CZ-NH2	7.70	124.15	120.30
1	A	92	ARG	NE-CZ-NH2	7.27	123.93	120.30
1	A	110	ARG	NE-CZ-NH1	7.21	123.90	120.30
1	A	82	ARG	NE-CZ-NH2	7.11	123.86	120.30
1	A	75	ARG	NH1-CZ-NH2	-6.38	112.39	119.40
1	B	275	ARG	NH1-CZ-NH2	-6.36	112.41	119.40
1	B	344[A]	ARG	NE-CZ-NH1	6.29	123.45	120.30
1	B	344[B]	ARG	NE-CZ-NH1	6.29	123.45	120.30
1	B	241	ARG	NE-CZ-NH1	6.03	123.31	120.30
1	A	150	ARG	NE-CZ-NH2	-5.93	117.33	120.30
1	B	227	ASP	CB-CG-OD1	5.75	123.47	118.30
1	A	68	GLU	CA-CB-CG	5.21	124.86	113.40
1	A	72	HIS	CG-ND1-CE1	5.02	115.23	108.20

There are no chirality outliers.

There are no planarity outliers.

5.2 Too-close contacts

In the following table, the Non-H and H(model) columns list the number of non-hydrogen atoms and hydrogen atoms in the chain respectively. The H(added) column lists the number of hydrogen atoms added and optimized by MolProbity. The Clashes column lists the number of clashes within the asymmetric unit, whereas Symm-Clashes lists symmetry related clashes.

Mol	Chain	Non-H	H(model)	H(added)	Clashes	Symm-Clashes
1	A	1147	0	1148	16	0
1	B	1226	0	1215	26	0
2	A	2	0	0	0	0
2	B	2	0	0	0	0
3	A	1	0	0	0	0
4	A	31	0	14	0	0
4	B	31	0	14	0	0
5	A	14	0	8	0	0
5	B	14	0	8	0	0
6	A	224	0	0	6	0
6	B	257	0	0	14	0
All	All	2949	0	2407	42	0

The all-atom clashscore is defined as the number of clashes found per 1000 atoms (including hydrogen atoms). The all-atom clashscore for this structure is 9.

All (42) close contacts within the same asymmetric unit are listed below, sorted by their clash magnitude.

Atom-1	Atom-2	Interatomic distance (Å)	Clash overlap (Å)
1:B:211:LEU:HD12	6:B:561:HOH:O	1.87	0.73
1:B:267[A]:GLU:HG3	6:B:793:HOH:O	1.88	0.73
1:B:342:MET:HG2	6:B:810:HOH:O	1.89	0.73
1:A:44:PRO:HG3	1:A:51:PRO:O	1.89	0.71
1:B:282:ARG:NH2	6:B:830:HOH:O	2.23	0.69
1:B:217[B]:GLN:HE21	1:B:294:LEU:HB2	1.56	0.69
1:A:68:GLU:HG2	6:A:778:HOH:O	1.95	0.66
1:B:217[A]:GLN:HG2	6:B:561:HOH:O	1.96	0.66
1:A:92:ARG:HH11	1:A:92:ARG:HG2	1.63	0.63
1:B:348:HIS:HD2	6:B:777:HOH:O	1.82	0.61
1:B:217[B]:GLN:HG2	6:B:561:HOH:O	2.01	0.60
1:B:241:ARG:HD3	6:B:722:HOH:O	2.02	0.59
1:A:10:ASN:HD21	1:A:92:ARG:HD3	1.68	0.58
1:A:142[A]:MET:HE2	6:A:564:HOH:O	2.05	0.57
1:A:10:ASN:HD21	1:A:92:ARG:CD	2.18	0.56
1:B:267[B]:GLU:CD	6:B:429:HOH:O	2.44	0.55

Continued on next page...

Continued from previous page...

Atom-1	Atom-2	Interatomic distance (Å)	Clash overlap (Å)
1:B:223:LYS:HE3	1:B:227:ASP:OD2	2.07	0.55
1:A:10:ASN:HD21	1:A:92:ARG:NE	2.05	0.54
1:A:32:HIS:HD2	6:A:610:HOH:O	1.90	0.53
1:A:92:ARG:HH11	1:A:92:ARG:CG	2.22	0.53
1:B:235[A]:THR:HG22	1:B:259:ALA:HB3	1.90	0.52
1:B:293:THR:HB	6:B:712:HOH:O	2.09	0.52
1:B:342:MET:CE	6:B:862[A]:HOH:O	2.58	0.51
1:B:339:ASP:OD2	1:B:341:GLU:OE2	2.29	0.50
1:B:235[A]:THR:HG21	1:B:331:ILE:HB	1.94	0.49
1:B:342:MET:HE1	6:B:862[A]:HOH:O	2.12	0.49
1:B:344[B]:ARG:HB3	1:B:344[B]:ARG:CZ	2.42	0.49
1:B:303[B]:ASN:OD1	1:B:338:PRO:HA	2.13	0.48
1:A:43:PRO:HA	1:A:44:PRO:HD3	1.73	0.46
1:A:92:ARG:NH1	1:A:92:ARG:CG	2.78	0.46
1:B:221:ALA:HA	1:B:280[B]:GLN:HE22	1.80	0.46
1:A:67:GLU:HG2	1:A:68:GLU:N	2.31	0.45
1:A:80:GLN:NE2	6:A:874:HOH:O	2.49	0.45
1:B:238:SER:CB	1:B:357:LYS:HE2	2.47	0.44
1:A:121:ARG:HD3	1:A:123:PHE:CZ	2.53	0.44
1:B:267[B]:GLU:HG2	1:B:268:GLU:N	2.31	0.43
1:B:319:LYS:HE3	6:B:788:HOH:O	2.18	0.42
1:A:100:LEU:HD22	6:A:796:HOH:O	2.19	0.42
1:A:145:GLN:HG2	6:A:564:HOH:O	2.20	0.41
1:B:235[A]:THR:HG22	1:B:259:ALA:CB	2.49	0.41
1:B:282:ARG:HB3	1:B:283:GLY:H	1.41	0.40
1:B:357:LYS:NZ	6:B:775:HOH:O	2.49	0.40

There are no symmetry-related clashes.

5.3 Torsion angles [i](#)

5.3.1 Protein backbone [i](#)

In the following table, the Percentiles column shows the percent Ramachandran outliers of the chain as a percentile score with respect to all X-ray entries followed by that with respect to entries of similar resolution.

The Analysed column shows the number of residues for which the backbone conformation was analysed, and the total number of residues.

Mol	Chain	Analysed	Favoured	Allowed	Outliers	Percentiles	
1	A	138/152 (91%)	136 (99%)	2 (1%)	0	100	100
1	B	156/152 (103%)	153 (98%)	2 (1%)	1 (1%)	28	7
All	All	294/304 (97%)	289 (98%)	4 (1%)	1 (0%)	44	18

All (1) Ramachandran outliers are listed below:

Mol	Chain	Res	Type
1	B	290	GLY

5.3.2 Protein sidechains ⓘ

In the following table, the Percentiles column shows the percent sidechain outliers of the chain as a percentile score with respect to all X-ray entries followed by that with respect to entries of similar resolution.

The Analysed column shows the number of residues for which the sidechain conformation was analysed, and the total number of residues.

Mol	Chain	Analysed	Rotameric	Outliers	Percentiles	
1	A	126/131 (96%)	121 (96%)	5 (4%)	36	6
1	B	137/131 (105%)	131 (96%)	6 (4%)	33	5
All	All	263/262 (100%)	252 (96%)	11 (4%)	37	6

All (11) residues with a non-rotameric sidechain are listed below:

Mol	Chain	Res	Type
1	A	10	ASN
1	A	42	THR
1	A	92	ARG
1	A	93	THR
1	A	135	LEU
1	B	223	LYS
1	B	248	GLN
1	B	282	ARG
1	B	342	MET
1	B	344[A]	ARG
1	B	344[B]	ARG

Some sidechains can be flipped to improve hydrogen bonding and reduce clashes. All (3) such sidechains are listed below:

Mol	Chain	Res	Type
1	A	10	ASN
1	A	17	GLN
1	B	345	GLN

5.3.3 RNA ⓘ

There are no RNA molecules in this entry.

5.4 Non-standard residues in protein, DNA, RNA chains ⓘ

There are no non-standard protein/DNA/RNA residues in this entry.

5.5 Carbohydrates ⓘ

There are no carbohydrates in this entry.

5.6 Ligand geometry ⓘ

Of 9 ligands modelled in this entry, 5 are monoatomic - leaving 4 for Mogul analysis.

In the following table, the Counts columns list the number of bonds (or angles) for which Mogul statistics could be retrieved, the number of bonds (or angles) that are observed in the model and the number of bonds (or angles) that are defined in the chemical component dictionary. The Link column lists molecule types, if any, to which the group is linked. The Z score for a bond length (or angle) is the number of standard deviations the observed value is removed from the expected value. A bond length (or angle) with $|Z| > 2$ is considered an outlier worth inspection. RMSZ is the root-mean-square of all Z scores of the bond lengths (or angles).

Mol	Type	Chain	Res	Link	Bond lengths			Bond angles		
					Counts	RMSZ	# $ Z > 2$	Counts	RMSZ	# $ Z > 2$
4	APC	A	171	2	28,33,33	1.93	7 (25%)	28,52,52	1.91	5 (17%)
5	PH2	A	181	2	11,15,15	3.51	6 (54%)	11,21,21	4.12	5 (45%)
4	APC	B	371	2	28,33,33	1.99	6 (21%)	28,52,52	2.18	6 (21%)
5	PH2	B	381	2	11,15,15	3.79	6 (54%)	11,21,21	3.98	6 (54%)

In the following table, the Chirals column lists the number of chiral outliers, the number of chiral centers analysed, the number of these observed in the model and the number defined in the chemical component dictionary. Similar counts are reported in the Torsion and Rings columns. '-' means no outliers of that kind were identified.

Mol	Type	Chain	Res	Link	Chirals	Torsions	Rings
4	APC	A	171	2	-	0/15/38/38	0/3/3/3
5	PH2	A	181	2	-	0/0/11/11	0/2/2/2
4	APC	B	371	2	-	0/15/38/38	0/3/3/3
5	PH2	B	381	2	-	0/0/11/11	0/2/2/2

All (25) bond length outliers are listed below:

Mol	Chain	Res	Type	Atoms	Z	Observed(Å)	Ideal(Å)
5	B	381	PH2	C3-N4	-5.89	1.33	1.45
5	A	181	PH2	C3-N4	-5.38	1.34	1.45
5	B	381	PH2	C6-N6	-4.52	1.24	1.34
5	A	181	PH2	C6-N6	-4.51	1.24	1.34
5	A	181	PH2	C6-N5	-3.35	1.29	1.35
5	B	381	PH2	C6-N5	-3.04	1.29	1.35
4	A	171	APC	PA-O2A	-2.56	1.50	1.56
4	A	171	APC	PB-O2B	-2.32	1.50	1.56
4	B	371	APC	PB-O2B	-2.03	1.51	1.56
4	A	171	APC	C3'-C4'	-2.01	1.47	1.53
4	A	171	APC	PG-O3B	2.09	1.63	1.60
4	B	371	APC	PG-O3B	2.20	1.63	1.60
5	A	181	PH2	C2-N1	2.57	1.31	1.28
4	B	371	APC	PA-O5'	2.74	1.60	1.57
4	A	171	APC	O4'-C1'	3.37	1.45	1.41
5	B	381	PH2	C9-C10	3.44	1.51	1.41
4	A	171	APC	C4-N3	3.59	1.40	1.35
5	B	381	PH2	C2-N1	3.68	1.33	1.28
4	B	371	APC	C4-N3	3.78	1.41	1.35
5	A	181	PH2	C9-C10	3.89	1.52	1.41
4	B	371	APC	O4'-C1'	4.11	1.46	1.41
4	A	171	APC	C2-N3	6.38	1.42	1.32
4	B	371	APC	C2-N3	6.59	1.43	1.32
5	A	181	PH2	C6-N7	6.70	1.47	1.35
5	B	381	PH2	C6-N7	7.76	1.49	1.35

All (22) bond angle outliers are listed below:

Mol	Chain	Res	Type	Atoms	Z	Observed(°)	Ideal(°)
4	A	171	APC	C4'-O4'-C1'	-7.58	101.70	109.77
4	B	371	APC	C4'-O4'-C1'	-7.53	101.75	109.77
5	A	181	PH2	N7-C6-N5	-6.24	115.33	125.45
5	B	381	PH2	N7-C6-N5	-5.34	116.79	125.45
4	B	371	APC	N3-C2-N1	-3.87	125.49	128.86
5	B	381	PH2	N6-C6-N7	-3.60	111.49	117.24

Continued on next page...

Continued from previous page...

Mol	Chain	Res	Type	Atoms	Z	Observed(°)	Ideal(°)
4	A	171	APC	PG-O3B-PB	-2.63	123.10	132.38
5	B	381	PH2	C8-N7-C6	2.05	119.00	116.06
4	B	371	APC	C2-N1-C6	2.15	122.53	118.77
4	A	171	APC	O2B-PB-O1B	2.50	118.44	110.09
4	A	171	APC	C1'-N9-C4	2.54	131.03	126.64
4	B	371	APC	O2B-PB-O1B	2.65	118.96	110.09
4	A	171	APC	C4-C5-N7	2.66	111.98	109.41
4	B	371	APC	C4-C5-N7	3.00	112.31	109.41
5	B	381	PH2	C8-C9-C10	3.16	116.63	114.52
4	B	371	APC	C1'-N9-C4	3.72	133.06	126.64
5	A	181	PH2	C8-N7-C6	4.15	122.03	116.06
5	A	181	PH2	N6-C6-N5	5.06	125.33	117.24
5	B	381	PH2	C6-N5-C10	5.68	127.31	114.51
5	A	181	PH2	C6-N5-C10	5.94	127.90	114.51
5	A	181	PH2	O4-C11-C2	7.56	121.52	111.70
5	B	381	PH2	N6-C6-N5	9.06	131.72	117.24

There are no chirality outliers.

There are no torsion outliers.

There are no ring outliers.

No monomer is involved in short contacts.

5.7 Other polymers [i](#)

There are no such residues in this entry.

5.8 Polymer linkage issues [i](#)

There are no chain breaks in this entry.

6 Fit of model and data [i](#)

6.1 Protein, DNA and RNA chains [i](#)

In the following table, the column labelled ‘#RSRZ > 2’ contains the number (and percentage) of RSRZ outliers, followed by percent RSRZ outliers for the chain as percentile scores relative to all X-ray entries and entries of similar resolution. The OWAB column contains the minimum, median, 95th percentile and maximum values of the occupancy-weighted average B-factor per residue. The column labelled ‘Q < 0.9’ lists the number of (and percentage) of residues with an average occupancy less than 0.9.

Mol	Chain	Analysed	<RSRZ>	#RSRZ>2	OWAB(Å ²)	Q<0.9
1	A	143/152 (94%)	0.15	8 (5%) 25 24	11, 17, 32, 97	0
1	B	152/152 (100%)	-0.02	11 (7%) 16 16	9, 14, 43, 75	0
All	All	295/304 (97%)	0.06	19 (6%) 20 19	9, 16, 35, 97	0

All (19) RSRZ outliers are listed below:

Mol	Chain	Res	Type	RSRZ
1	A	92	ARG	11.8
1	A	93	THR	9.6
1	B	283	GLY	6.5
1	B	246	GLY	4.5
1	A	82	ARG	4.1
1	A	44	PRO	3.7
1	B	247	PRO	3.7
1	B	281	GLY	3.3
1	A	51	PRO	3.3
1	A	94	LEU	3.3
1	B	291	PRO	2.9
1	B	282	ARG	2.9
1	B	293	THR	2.6
1	B	290	GLY	2.5
1	B	249	ASP	2.5
1	A	43	PRO	2.4
1	A	53	TYR	2.4
1	B	248	GLN	2.2
1	B	245	LEU	2.0

6.2 Non-standard residues in protein, DNA, RNA chains [i](#)

There are no non-standard protein/DNA/RNA residues in this entry.

6.3 Carbohydrates [i](#)

There are no carbohydrates in this entry.

6.4 Ligands [i](#)

In the following table, the Atoms column lists the number of modelled atoms in the group and the number defined in the chemical component dictionary. LLDF column lists the quality of electron density of the group with respect to its neighbouring residues in protein, DNA or RNA chains. The B-factors column lists the minimum, median, 95th percentile and maximum values of B factors of atoms in the group. The column labelled 'Q< 0.9' lists the number of atoms with occupancy less than 0.9.

Mol	Type	Chain	Res	Atoms	RSCC	RSR	LLDF	B-factors(\AA^2)	Q<0.9
5	PH2	A	181	14/14	0.89	0.20	1.33	17,30,38,38	0
5	PH2	B	381	14/14	0.96	0.08	-0.18	10,13,15,15	0
4	APC	B	371	31/31	0.98	0.06	-1.27	9,12,14,16	0
4	APC	A	171	31/31	0.98	0.06	-1.29	10,14,17,24	0
2	MG	A	162	1/1	1.00	0.05	-	13,13,13,13	0
2	MG	B	361	1/1	1.00	0.03	-	10,10,10,10	0
2	MG	A	161	1/1	0.99	0.04	-	13,13,13,13	0
2	MG	B	362	1/1	0.99	0.05	-	11,11,11,11	0
3	CL	A	163	1/1	1.00	0.05	-	17,17,17,17	0

6.5 Other polymers [i](#)

There are no such residues in this entry.