



# wwPDB X-ray Structure Validation Summary Report ⓘ

Feb 13, 2017 – 09:05 pm GMT

PDB ID : 3RZF  
Title : Crystal Structure of Inhibitor of kappaB kinase beta (I4122)  
Authors : Xu, G.; Lo, Y.C.; Li, Q.; Napolitano, G.; Wu, X.; Jiang, X.; Dreano, M.;  
Karin, M.; Wu, H.  
Deposited on : 2011-05-11  
Resolution : 4.00 Å(reported)

This is a wwPDB X-ray Structure Validation Summary Report for a publicly released PDB entry.

We welcome your comments at [validation@mail.wwpdb.org](mailto:validation@mail.wwpdb.org)

A user guide is available at

<http://wwpdb.org/validation/2016/XrayValidationReportHelp>

with specific help available everywhere you see the ⓘ symbol.

---

The following versions of software and data (see [references ⓘ](#)) were used in the production of this report:

MolProbity : 4.02b-467  
Mogul : 1.7.2 (RC1), CSD as538be (2017)  
Xtriage (Phenix) : 1.9-1692  
EDS : trunk28620  
Percentile statistics : 20161228.v01 (using entries in the PDB archive December 28th 2016)  
Refmac : 5.8.0135  
CCP4 : 6.5.0  
Ideal geometry (proteins) : Engh & Huber (2001)  
Ideal geometry (DNA, RNA) : Parkinson et al. (1996)  
Validation Pipeline (wwPDB-VP) : recalc28949

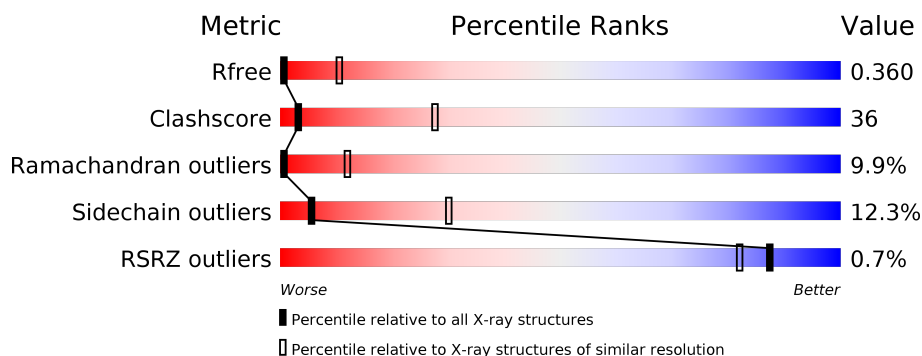
# 1 Overall quality at a glance

The following experimental techniques were used to determine the structure:

## *X-RAY DIFFRACTION*

The reported resolution of this entry is 4.00 Å.

Percentile scores (ranging between 0-100) for global validation metrics of the entry are shown in the following graphic. The table shows the number of entries on which the scores are based.



Metric	Whole archive (#Entries)	Similar resolution (#Entries, resolution range(Å))
$R_{free}$	100719	1088 (4.40-3.60)
Clashscore	112137	1187 (4.40-3.60)
Ramachandran outliers	110173	1139 (4.40-3.60)
Sidechain outliers	110143	1126 (4.40-3.60)
RSRZ outliers	101464	1099 (4.40-3.60)

The table below summarises the geometric issues observed across the polymeric chains and their fit to the electron density. The red, orange, yellow and green segments on the lower bar indicate the fraction of residues that contain outliers for  $\geq 3$ , 2, 1 and 0 types of geometric quality criteria. A grey segment represents the fraction of residues that are not modelled. The numeric value for each fraction is indicated below the corresponding segment, with a dot representing fractions  $\leq 5\%$ . The upper red bar (where present) indicates the fraction of residues that have poor fit to the electron density. The numeric value is given above the bar.

Mol	Chain	Length	Quality of chain
1	A	677	<div> <div></div> <div>34%</div> <div>35%</div> <div>10%</div> <div>•</div> <div>20%</div> </div>

The following table lists non-polymeric compounds, carbohydrate monomers and non-standard residues in protein, DNA, RNA chains that are outliers for geometric or electron-density-fit criteria:

Mol	Type	Chain	Res	Chirality	Geometry	Clashes	Electron density
2	XNM	A	676	-	-	X	X

## 2 Entry composition

There are 2 unique types of molecules in this entry. The entry contains 4399 atoms, of which 0 are hydrogens and 0 are deuteriums.

In the tables below, the ZeroOcc column contains the number of atoms modelled with zero occupancy, the AltConf column contains the number of residues with at least one atom in alternate conformation and the Trace column contains the number of residues modelled with at most 2 atoms.

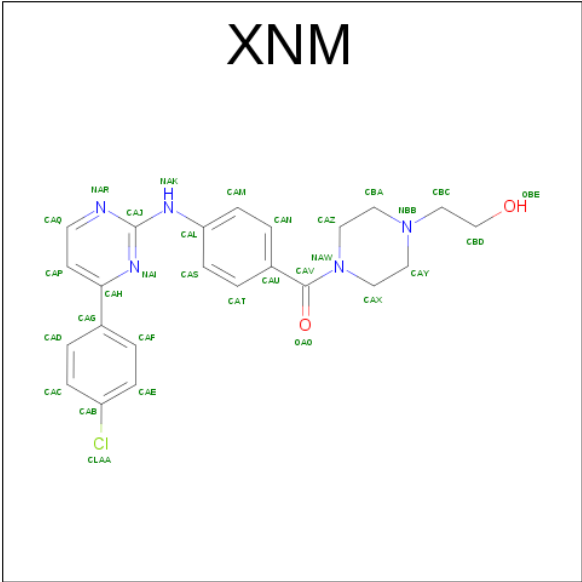
- Molecule 1 is a protein called MGC80376 protein.

Mol	Chain	Residues	Atoms					ZeroOcc	AltConf	Trace
1	A	541	Total	C	N	O	S	0	0	0
			4368	2764	779	799	26			

There are 20 discrepancies between the modelled and reference sequences:

Chain	Residue	Modelled	Actual	Comment	Reference
A	-1	GLN	-	EXPRESSION TAG	UNP Q6INT1
A	0	GLY	-	EXPRESSION TAG	UNP Q6INT1
A	1	GLY	-	EXPRESSION TAG	UNP Q6INT1
A	2	GLY	-	EXPRESSION TAG	UNP Q6INT1
A	3	ARG	-	EXPRESSION TAG	UNP Q6INT1
A	4	SER	-	EXPRESSION TAG	UNP Q6INT1
A	5	PRO	-	EXPRESSION TAG	UNP Q6INT1
A	6	SER	-	EXPRESSION TAG	UNP Q6INT1
A	7	LEU	-	EXPRESSION TAG	UNP Q6INT1
A	8	PRO	-	EXPRESSION TAG	UNP Q6INT1
A	9	THR	-	EXPRESSION TAG	UNP Q6INT1
A	10	GLN	-	EXPRESSION TAG	UNP Q6INT1
A	11	THR	-	EXPRESSION TAG	UNP Q6INT1
A	12	CYS	-	EXPRESSION TAG	UNP Q6INT1
A	13	GLY	-	EXPRESSION TAG	UNP Q6INT1
A	14	PRO	-	EXPRESSION TAG	UNP Q6INT1
A	15	TRP	-	EXPRESSION TAG	UNP Q6INT1
A	16	GLU	-	EXPRESSION TAG	UNP Q6INT1
A	177	GLU	SER	ENGINEERED MUTATION	UNP Q6INT1
A	181	GLU	SER	ENGINEERED MUTATION	UNP Q6INT1

- Molecule 2 is (4-{[4-(4-CHLOROPHENYL)PYRIMIDIN-2-YL]AMINO}PHENYL)[4-(2-H YDROXYETHYL)PIPERAZIN-1-YL]METHANONE (three-letter code: XNM) (formula: C<sub>23</sub>H<sub>24</sub>ClN<sub>5</sub>O<sub>2</sub>).



Mol	Chain	Residues	Atoms					ZeroOcc	AltConf
2	A	1	Total	C	Cl	N	O	0	0
			31	23	1	5	2		



## 4 Data and refinement statistics

Property	Value	Source
Space group	I 41 2 2	Depositor
Cell constants a, b, c, $\alpha$ , $\beta$ , $\gamma$	164.66Å 164.66Å 273.46Å 90.00° 90.00° 90.00°	Depositor
Resolution (Å)	14.96 – 4.00 36.58 – 3.90	Depositor EDS
% Data completeness (in resolution range)	83.7 (14.96-4.00) 80.2 (36.58-3.90)	Depositor EDS
$R_{merge}$	0.06	Depositor
$R_{sym}$	0.08	Depositor
$\langle I/\sigma(I) \rangle$ <sup>1</sup>	2.52 (at 3.87Å)	Xtriage
Refinement program	PHENIX (phenix.refine: 1.6.4_486)	Depositor
R, $R_{free}$	0.270 , 0.340 0.281 , 0.360	Depositor DCC
$R_{free}$ test set	667 reflections (4.89%)	DCC
Wilson B-factor (Å <sup>2</sup> )	131.3	Xtriage
Anisotropy	0.744	Xtriage
Bulk solvent $k_{sol}$ (e/Å <sup>3</sup> ), $B_{sol}$ (Å <sup>2</sup> )	0.26 , 282.7	EDS
L-test for twinning <sup>2</sup>	$\langle  L  \rangle = 0.48$ , $\langle L^2 \rangle = 0.31$	Xtriage
Estimated twinning fraction	No twinning to report.	Xtriage
$F_o, F_c$ correlation	0.89	EDS
Total number of atoms	4399	wwPDB-VP
Average B, all atoms (Å <sup>2</sup> )	242.0	wwPDB-VP

Xtriage's analysis on translational NCS is as follows: *The largest off-origin peak in the Patterson function is 3.77% of the height of the origin peak. No significant pseudotranslation is detected.*

<sup>1</sup>Intensities estimated from amplitudes.

<sup>2</sup>Theoretical values of  $\langle |L| \rangle$ ,  $\langle L^2 \rangle$  for acentric reflections are 0.5, 0.333 respectively for untwinned datasets, and 0.375, 0.2 for perfectly twinned datasets.

## 5 Model quality

### 5.1 Standard geometry

Bond lengths and bond angles in the following residue types are not validated in this section: XNM

The Z score for a bond length (or angle) is the number of standard deviations the observed value is removed from the expected value. A bond length (or angle) with  $|Z| > 5$  is considered an outlier worth inspection. RMSZ is the root-mean-square of all Z scores of the bond lengths (or angles).

Mol	Chain	Bond lengths		Bond angles	
		RMSZ	$\# Z  > 5$	RMSZ	$\# Z  > 5$
1	A	0.52	3/4447 (0.1%)	0.72	4/6011 (0.1%)

Chiral center outliers are detected by calculating the chiral volume of a chiral center and verifying if the center is modelled as a planar moiety or with the opposite hand. A planarity outlier is detected by checking planarity of atoms in a peptide group, atoms in a mainchain group or atoms of a sidechain that are expected to be planar.

Mol	Chain	#Chirality outliers	#Planarity outliers
1	A	0	1

All (3) bond length outliers are listed below:

Mol	Chain	Res	Type	Atoms	Z	Observed(Å)	Ideal(Å)
1	A	169	TYR	N-CA	5.21	1.56	1.46
1	A	103	ASP	C-N	-5.04	1.22	1.34
1	A	168	GLY	CA-C	5.01	1.59	1.51

All (4) bond angle outliers are listed below:

Mol	Chain	Res	Type	Atoms	Z	Observed(°)	Ideal(°)
1	A	249	LEU	CA-CB-CG	6.42	130.07	115.30
1	A	228	PRO	N-CA-C	5.97	127.63	112.10
1	A	104	LEU	CB-CA-C	5.84	121.30	110.20
1	A	228	PRO	C-N-CA	5.25	134.82	121.70

There are no chirality outliers.

All (1) planarity outliers are listed below:

Mol	Chain	Res	Type	Group
1	A	232	HIS	Peptide

## 5.2 Too-close contacts [i](#)

In the following table, the Non-H and H(model) columns list the number of non-hydrogen atoms and hydrogen atoms in the chain respectively. The H(added) column lists the number of hydrogen atoms added and optimized by MolProbity. The Clashes column lists the number of clashes within the asymmetric unit, whereas Symm-Clashes lists symmetry related clashes.

Mol	Chain	Non-H	H(model)	H(added)	Clashes	Symm-Clashes
1	A	4368	0	4427	318	0
2	A	31	0	22	40	0
All	All	4399	0	4449	322	0

The all-atom clashscore is defined as the number of clashes found per 1000 atoms (including hydrogen atoms). The all-atom clashscore for this structure is 36.

The worst 5 of 322 close contacts within the same asymmetric unit are listed below, sorted by their clash magnitude.

Atom-1	Atom-2	Interatomic distance (Å)	Clash overlap (Å)
1:A:102:GLY:HA2	2:A:676:XNM:CAT	1.25	1.64
1:A:102:GLY:HA2	2:A:676:XNM:CAS	1.27	1.60
1:A:99:CYS:O	1:A:100:GLU:CG	1.67	1.42
1:A:102:GLY:CA	2:A:676:XNM:CAT	2.12	1.26
1:A:102:GLY:CA	2:A:676:XNM:CAS	2.14	1.24

There are no symmetry-related clashes.

## 5.3 Torsion angles [i](#)

### 5.3.1 Protein backbone [i](#)

In the following table, the Percentiles column shows the percent Ramachandran outliers of the chain as a percentile score with respect to all X-ray entries followed by that with respect to entries of similar resolution.

The Analysed column shows the number of residues for which the backbone conformation was analysed, and the total number of residues.

Mol	Chain	Analysed	Favoured	Allowed	Outliers	Percentiles
1	A	527/677 (78%)	329 (62%)	146 (28%)	52 (10%)	<b>1</b> <b>12</b>



5 of 52 Ramachandran outliers are listed below:

Mol	Chain	Res	Type
1	A	100	GLU
1	A	187	GLN
1	A	189	LEU
1	A	220	ARG
1	A	229	VAL

### 5.3.2 Protein sidechains ⓘ

In the following table, the Percentiles column shows the percent sidechain outliers of the chain as a percentile score with respect to all X-ray entries followed by that with respect to entries of similar resolution.

The Analysed column shows the number of residues for which the sidechain conformation was analysed, and the total number of residues.

Mol	Chain	Analysed	Rotameric	Outliers	Percentiles
1	A	487/610 (80%)	427 (88%)	60 (12%)	5 30

5 of 60 residues with a non-rotameric sidechain are listed below:

Mol	Chain	Res	Type
1	A	294	ASN
1	A	321	ARG
1	A	590	MET
1	A	309	LEU
1	A	327	VAL

Some sidechains can be flipped to improve hydrogen bonding and reduce clashes. 5 of 15 such sidechains are listed below:

Mol	Chain	Res	Type
1	A	278	GLN
1	A	284	HIS
1	A	435	GLN
1	A	263	ASN
1	A	432	GLN

### 5.3.3 RNA ⓘ

There are no RNA molecules in this entry.

## 5.4 Non-standard residues in protein, DNA, RNA chains [i](#)

There are no non-standard protein/DNA/RNA residues in this entry.

## 5.5 Carbohydrates [i](#)

There are no carbohydrates in this entry.

## 5.6 Ligand geometry [i](#)

1 ligand is modelled in this entry.

In the following table, the Counts columns list the number of bonds (or angles) for which Mogul statistics could be retrieved, the number of bonds (or angles) that are observed in the model and the number of bonds (or angles) that are defined in the chemical component dictionary. The Link column lists molecule types, if any, to which the group is linked. The Z score for a bond length (or angle) is the number of standard deviations the observed value is removed from the expected value. A bond length (or angle) with  $|Z| > 2$  is considered an outlier worth inspection. RMSZ is the root-mean-square of all Z scores of the bond lengths (or angles).

Mol	Type	Chain	Res	Link	Bond lengths			Bond angles		
					Counts	RMSZ	# $ Z  > 2$	Counts	RMSZ	# $ Z  > 2$
2	XNM	A	676	-	34,34,34	3.32	5 (14%)	46,46,46	2.70	10 (21%)

In the following table, the Chirals column lists the number of chiral outliers, the number of chiral centers analysed, the number of these observed in the model and the number defined in the chemical component dictionary. Similar counts are reported in the Torsion and Rings columns. '-' means no outliers of that kind were identified.

Mol	Type	Chain	Res	Link	Chirals	Torsions	Rings
2	XNM	A	676	-	-	0/19/29/29	0/4/4/4

All (5) bond length outliers are listed below:

Mol	Chain	Res	Type	Atoms	Z	Observed(Å)	Ideal(Å)
2	A	676	XNM	CBC-NBB	-16.97	1.08	1.47
2	A	676	XNM	CAG-CAH	-5.57	1.40	1.48
2	A	676	XNM	CAL-NAK	-2.44	1.35	1.40
2	A	676	XNM	CAC-CAB	2.03	1.41	1.38
2	A	676	XNM	CAV-NAW	2.94	1.41	1.34

The worst 5 of 10 bond angle outliers are listed below:

Mol	Chain	Res	Type	Atoms	Z	Observed( $^{\circ}$ )	Ideal( $^{\circ}$ )
2	A	676	XNM	NAR-CAJ-NAI	-8.81	118.20	126.68
2	A	676	XNM	CAP-CAQ-NAR	-4.34	118.92	123.92
2	A	676	XNM	OAO-CAV-NAW	-2.90	117.33	122.36
2	A	676	XNM	CAF-CAG-CAD	2.02	121.61	117.59
2	A	676	XNM	CBC-NBB-CAY	2.74	118.28	111.26

There are no chirality outliers.

There are no torsion outliers.

There are no ring outliers.

1 monomer is involved in 40 short contacts:

Mol	Chain	Res	Type	Clashes	Symm-Clashes
2	A	676	XNM	40	0

## 5.7 Other polymers [i](#)

There are no such residues in this entry.

## 5.8 Polymer linkage issues [i](#)

There are no chain breaks in this entry.

## 6 Fit of model and data [i](#)

### 6.1 Protein, DNA and RNA chains [i](#)

In the following table, the column labelled ‘#RSRZ> 2’ contains the number (and percentage) of RSRZ outliers, followed by percent RSRZ outliers for the chain as percentile scores relative to all X-ray entries and entries of similar resolution. The OWAB column contains the minimum, median, 95<sup>th</sup> percentile and maximum values of the occupancy-weighted average B-factor per residue. The column labelled ‘Q< 0.9’ lists the number of (and percentage) of residues with an average occupancy less than 0.9.

Mol	Chain	Analysed	<RSRZ>	#RSRZ>2	OWAB(Å <sup>2</sup> )	Q<0.9
1	A	541/677 (79%)	-0.34	4 (0%) <a href="#">87</a> <a href="#">82</a>	127, 239, 345, 435	0

All (4) RSRZ outliers are listed below:

Mol	Chain	Res	Type	RSRZ
1	A	101	GLY	3.3
1	A	32	TRP	3.2
1	A	33	ILE	2.6
1	A	102	GLY	2.0

### 6.2 Non-standard residues in protein, DNA, RNA chains [i](#)

There are no non-standard protein/DNA/RNA residues in this entry.

### 6.3 Carbohydrates [i](#)

There are no carbohydrates in this entry.

### 6.4 Ligands [i](#)

In the following table, the Atoms column lists the number of modelled atoms in the group and the number defined in the chemical component dictionary. LLDF column lists the quality of electron density of the group with respect to its neighbouring residues in protein, DNA or RNA chains. The B-factors column lists the minimum, median, 95<sup>th</sup> percentile and maximum values of B factors of atoms in the group. The column labelled ‘Q< 0.9’ lists the number of atoms with occupancy less than 0.9.

Mol	Type	Chain	Res	Atoms	RSCC	RSR	LLDF	B-factors(Å <sup>2</sup> )	Q<0.9
2	XNM	A	676	31/31	0.40	0.82	<a href="#">2.29</a>	262,310,325,550	0

## 6.5 Other polymers [i](#)

There are no such residues in this entry.