



Full wwPDB X-ray Structure Validation Report ⓘ

Feb 13, 2017 – 11:07 am GMT

PDB ID : 1S2D
Title : Purine 2'-Deoxyribosyl complex with arabinoside: Ribosylated Intermediate (AraA)
Authors : Anand, R.; Kaminski, P.A.; Ealick, S.E.
Deposited on : 2004-01-08
Resolution : 2.10 Å(reported)

This is a Full wwPDB X-ray Structure Validation Report for a publicly released PDB entry.

We welcome your comments at validation@mail.wwpdb.org

A user guide is available at

<http://wwpdb.org/validation/2016/XrayValidationReportHelp>

with specific help available everywhere you see the ⓘ symbol.

The following versions of software and data (see [references ⓘ](#)) were used in the production of this report:

MolProbity : 4.02b-467
Mogul : 1.7.2 (RC1), CSD as538be (2017)
Xtriage (Phenix) : 1.9-1692
EDS : trunk28620
Percentile statistics : 20161228.v01 (using entries in the PDB archive December 28th 2016)
Refmac : 5.8.0135
CCP4 : 6.5.0
Ideal geometry (proteins) : Engh & Huber (2001)
Ideal geometry (DNA, RNA) : Parkinson et al. (1996)
Validation Pipeline (wwPDB-VP) : recalc28949

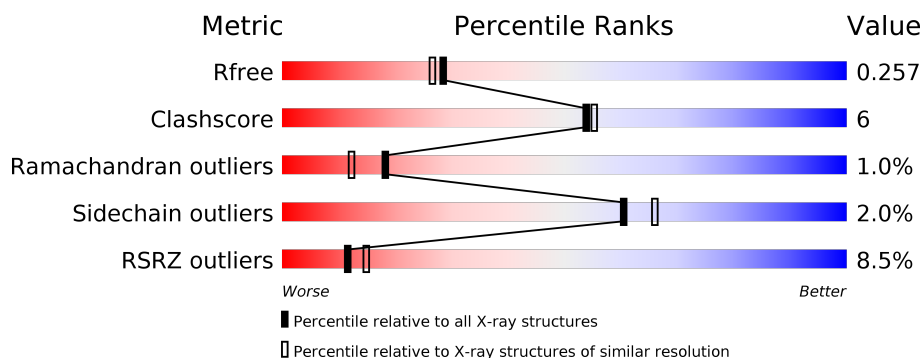
1 Overall quality at a glance

The following experimental techniques were used to determine the structure:

X-RAY DIFFRACTION

The reported resolution of this entry is 2.10 Å.

Percentile scores (ranging between 0-100) for global validation metrics of the entry are shown in the following graphic. The table shows the number of entries on which the scores are based.



Metric	Whole archive (#Entries)	Similar resolution (#Entries, resolution range(Å))
R_{free}	100719	4243 (2.10-2.10)
Clashscore	112137	4788 (2.10-2.10)
Ramachandran outliers	110173	4740 (2.10-2.10)
Sidechain outliers	110143	4741 (2.10-2.10)
RSRZ outliers	101464	4275 (2.10-2.10)

The table below summarises the geometric issues observed across the polymeric chains and their fit to the electron density. The red, orange, yellow and green segments on the lower bar indicate the fraction of residues that contain outliers for ≥ 3 , 2, 1 and 0 types of geometric quality criteria. A grey segment represents the fraction of residues that are not modelled. The numeric value for each fraction is indicated below the corresponding segment, with a dot representing fractions $\leq 5\%$. The upper red bar (where present) indicates the fraction of residues that have poor fit to the electron density. The numeric value is given above the bar.

Mol	Chain	Length	Quality of chain
1	A	167	<div> <div>8%</div> <div>83%</div> <div>16%</div> <div>.</div> </div>
1	B	167	<div> <div>8%</div> <div>82%</div> <div>16%</div> <div>.</div> </div>
1	C	167	<div> <div>10%</div> <div>88%</div> <div>12%</div> </div>

2 Entry composition [i](#)

There are 3 unique types of molecules in this entry. The entry contains 4193 atoms, of which 0 are hydrogens and 0 are deuteriums.

In the tables below, the ZeroOcc column contains the number of atoms modelled with zero occupancy, the AltConf column contains the number of residues with at least one atom in alternate conformation and the Trace column contains the number of residues modelled with at most 2 atoms.

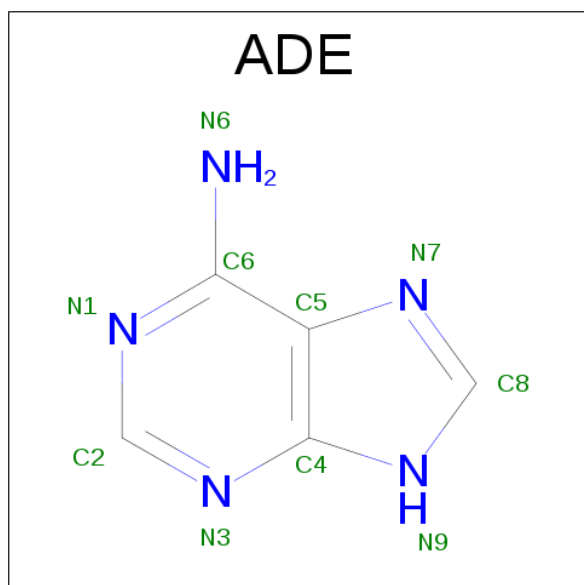
- Molecule 1 is a protein called purine trans deoxyribosylase.

Mol	Chain	Residues	Atoms						ZeroOcc	AltConf	Trace
1	A	165	Total	C	F	N	O	S	0	0	0
			1276	815	1	206	246	8			
1	B	167	Total	C	F	N	O	S	0	0	0
			1304	831	1	213	250	9			
1	C	167	Total	C	F	N	O	S	0	0	0
			1302	831	1	213	248	9			

There are 3 discrepancies between the modelled and reference sequences:

Chain	Residue	Modelled	Actual	Comment	Reference
A	101	AR4	GLU	MODIFIED RESIDUE	UNP Q8RLY5
B	101	AR4	GLU	MODIFIED RESIDUE	UNP Q8RLY5
C	101	AR4	GLU	MODIFIED RESIDUE	UNP Q8RLY5

- Molecule 2 is ADENINE (three-letter code: ADE) (formula: $C_5H_5N_5$).



Mol	Chain	Residues	Atoms			ZeroOcc	AltConf
2	A	1	Total	C	N	0	0
			10	5	5		
2	B	1	Total	C	N	0	0
			10	5	5		
2	C	1	Total	C	N	0	0
			10	5	5		

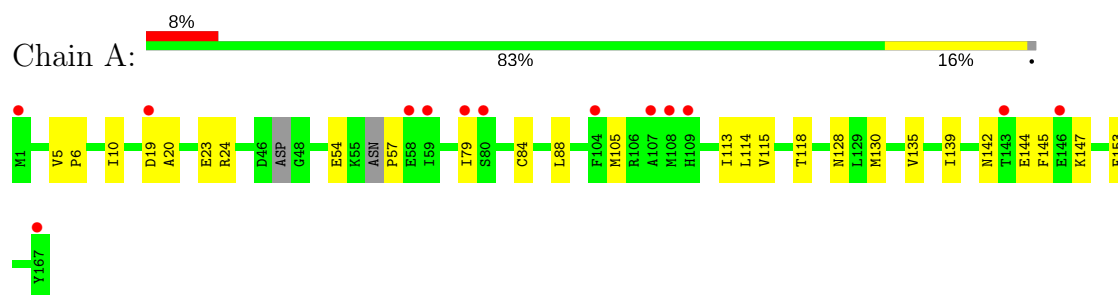
- Molecule 3 is water.

Mol	Chain	Residues	Atoms		ZeroOcc	AltConf
3	A	85	Total	O	0	0
			85	85		
3	B	100	Total	O	0	0
			100	100		
3	C	96	Total	O	0	0
			96	96		

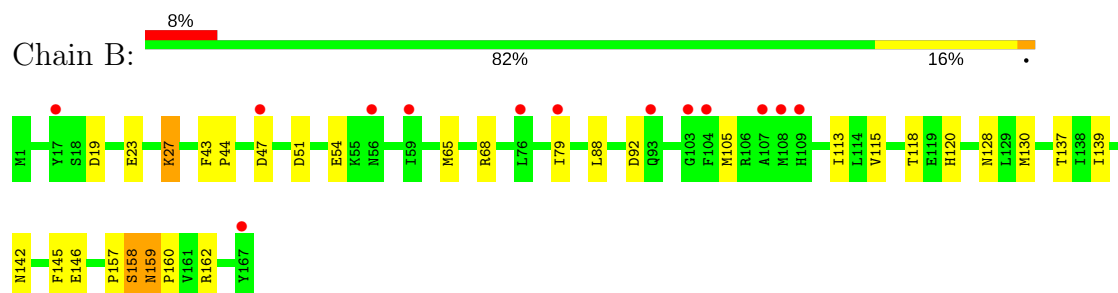
3 Residue-property plots [i](#)

These plots are drawn for all protein, RNA and DNA chains in the entry. The first graphic for a chain summarises the proportions of the various outlier classes displayed in the second graphic. The second graphic shows the sequence view annotated by issues in geometry and electron density. Residues are color-coded according to the number of geometric quality criteria for which they contain at least one outlier: green = 0, yellow = 1, orange = 2 and red = 3 or more. A red dot above a residue indicates a poor fit to the electron density ($RSRZ > 2$). Stretches of 2 or more consecutive residues without any outlier are shown as a green connector. Residues present in the sample, but not in the model, are shown in grey.

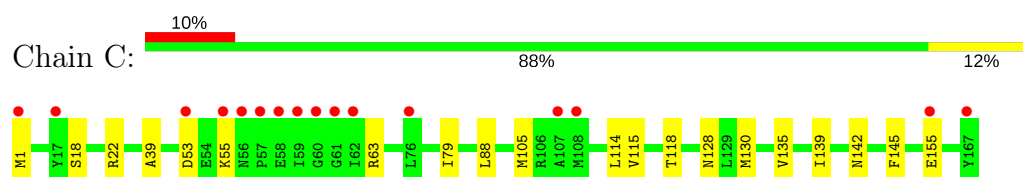
- Molecule 1: purine trans deoxyribosylase



- Molecule 1: purine trans deoxyribosylase



- Molecule 1: purine trans deoxyribosylase



4 Data and refinement statistics

Property	Value	Source
Space group	P 43 21 2	Depositor
Cell constants a, b, c, α , β , γ	79.59Å 79.59Å 184.97Å 90.00° 90.00° 90.00°	Depositor
Resolution (Å)	48.74 – 2.10 48.74 – 2.10	Depositor EDS
% Data completeness (in resolution range)	97.8 (48.74-2.10) 97.7 (48.74-2.10)	Depositor EDS
R_{merge}	0.06	Depositor
R_{sym}	0.06	Depositor
$\langle I/\sigma(I) \rangle$ ¹	13.23 (at 2.10Å)	Xtriage
Refinement program	CNS 1.1	Depositor
R, R_{free}	0.229 , 0.253 0.232 , 0.257	Depositor DCC
R_{free} test set	3471 reflections (11.07%)	DCC
Wilson B-factor (Å ²)	27.6	Xtriage
Anisotropy	0.294	Xtriage
Bulk solvent k_{sol} (e/Å ³), B_{sol} (Å ²)	0.36 , 45.5	EDS
L-test for twinning ²	$\langle L \rangle = 0.49$, $\langle L^2 \rangle = 0.32$	Xtriage
Estimated twinning fraction	No twinning to report.	Xtriage
F_o, F_c correlation	0.92	EDS
Total number of atoms	4193	wwPDB-VP
Average B, all atoms (Å ²)	34.0	wwPDB-VP

Xtriage's analysis on translational NCS is as follows: *The largest off-origin peak in the Patterson function is 4.82% of the height of the origin peak. No significant pseudotranslation is detected.*

¹Intensities estimated from amplitudes.

²Theoretical values of $\langle |L| \rangle$, $\langle L^2 \rangle$ for acentric reflections are 0.5, 0.333 respectively for untwinned datasets, and 0.375, 0.2 for perfectly twinned datasets.

5 Model quality

5.1 Standard geometry

Bond lengths and bond angles in the following residue types are not validated in this section: ADE, AR4

The Z score for a bond length (or angle) is the number of standard deviations the observed value is removed from the expected value. A bond length (or angle) with $|Z| > 5$ is considered an outlier worth inspection. RMSZ is the root-mean-square of all Z scores of the bond lengths (or angles).

Mol	Chain	Bond lengths		Bond angles	
		RMSZ	$\# Z > 5$	RMSZ	$\# Z > 5$
1	A	0.38	0/1288	0.59	0/1744
1	B	0.38	0/1318	0.62	0/1784
1	C	0.36	0/1316	0.60	0/1782
All	All	0.38	0/3922	0.60	0/5310

There are no bond length outliers.

There are no bond angle outliers.

There are no chirality outliers.

There are no planarity outliers.

5.2 Too-close contacts

In the following table, the Non-H and H(model) columns list the number of non-hydrogen atoms and hydrogen atoms in the chain respectively. The H(added) column lists the number of hydrogen atoms added and optimized by MolProbity. The Clashes column lists the number of clashes within the asymmetric unit, whereas Symm-Clashes lists symmetry related clashes.

Mol	Chain	Non-H	H(model)	H(added)	Clashes	Symm-Clashes
1	A	1276	0	1198	15	0
1	B	1304	0	1238	22	0
1	C	1302	0	1241	10	0
2	A	10	0	4	0	0
2	B	10	0	4	0	0
2	C	10	0	4	0	0
3	A	85	0	0	0	0
3	B	100	0	0	0	0
3	C	96	0	0	0	0
All	All	4193	0	3689	46	0

The all-atom clashscore is defined as the number of clashes found per 1000 atoms (including hydrogen atoms). The all-atom clashscore for this structure is 6.

All (46) close contacts within the same asymmetric unit are listed below, sorted by their clash magnitude.

Atom-1	Atom-2	Interatomic distance (Å)	Clash overlap (Å)
1:B:118:THR:HG22	1:B:120:HIS:H	1.26	0.97
1:B:118:THR:H	1:B:142:ASN:HD21	1.26	0.81
1:A:118:THR:H	1:A:142:ASN:HD21	1.40	0.69
1:A:84:CYS:SG	1:A:113:ILE:HD13	2.34	0.67
1:C:118:THR:H	1:C:142:ASN:HD21	1.46	0.64
1:A:128:ASN:HD22	1:A:130:MET:H	1.52	0.57
1:A:128:ASN:ND2	1:A:130:MET:H	2.05	0.54
1:B:65:MET:HA	1:B:65:MET:HE3	1.89	0.54
1:B:118:THR:HG22	1:B:120:HIS:N	2.09	0.54
1:B:128:ASN:HD22	1:B:130:MET:H	1.56	0.54
1:A:114:LEU:HB2	1:A:135:VAL:HG11	1.90	0.53
1:B:79:ILE:HG23	1:B:105:MET:HG2	1.90	0.52
1:A:118:THR:N	1:A:142:ASN:HD21	2.07	0.52
1:B:160:PRO:HD2	1:B:162:ARG:HH12	1.74	0.52
1:C:79:ILE:HG23	1:C:105:MET:HG2	1.91	0.51
1:C:128:ASN:HD22	1:C:130:MET:H	1.57	0.50
1:B:146:GLU:CD	1:B:146:GLU:H	2.15	0.50
1:B:113:ILE:HD13	1:B:137:THR:HB	1.94	0.50
1:B:51:ASP:HB3	1:B:54:GLU:HB2	1.94	0.49
1:C:115:VAL:HA	1:C:139:ILE:O	2.12	0.49
1:B:113:ILE:CD1	1:B:137:THR:HB	2.43	0.49
1:B:27:LYS:HA	1:B:27:LYS:HE2	1.95	0.48
1:C:1:MET:HG2	1:C:155:GLU:OE1	2.14	0.48
1:B:157:PRO:O	1:B:158:SER:O	2.32	0.48
1:B:19:ASP:O	1:B:23:GLU:HG3	2.13	0.48
1:A:10:ILE:HD11	1:A:153:PHE:CD1	2.50	0.46
1:A:54:GLU:HG2	1:A:57:PRO:HB3	1.96	0.46
1:B:65:MET:CE	1:B:65:MET:HA	2.46	0.45
1:B:158:SER:O	1:B:159:ASN:CB	2.64	0.45
1:A:79:ILE:HG23	1:A:105:MET:HG2	1.99	0.45
1:B:115:VAL:HA	1:B:139:ILE:O	2.17	0.44
1:B:92:ASP:OD2	1:B:118:THR:HG23	2.17	0.44
1:A:5:VAL:HG12	1:C:39:ALA:HB1	1.99	0.44
1:A:115:VAL:HA	1:A:139:ILE:O	2.17	0.44
1:A:19:ASP:O	1:A:23:GLU:HG3	2.17	0.44
1:B:128:ASN:ND2	1:B:130:MET:H	2.15	0.44
1:C:118:THR:N	1:C:142:ASN:HD21	2.15	0.44

Continued on next page...

Continued from previous page...

Atom-1	Atom-2	Interatomic distance (Å)	Clash overlap (Å)
1:B:65:MET:HE3	1:B:68:ARG:HB2	2.00	0.43
1:B:43:PHE:HA	1:B:44:PRO:HD2	1.79	0.43
1:C:128:ASN:ND2	1:C:130:MET:H	2.16	0.43
1:C:114:LEU:HB2	1:C:135:VAL:HG21	2.01	0.43
1:A:144:GLU:HB3	1:A:147:LYS:HD2	2.01	0.42
1:B:158:SER:O	1:B:159:ASN:HB2	2.20	0.42
1:A:20:ALA:O	1:A:24:ARG:HG3	2.21	0.41
1:C:18:SER:O	1:C:22:ARG:HG3	2.20	0.41
1:A:5:VAL:HG22	1:A:6:PRO:HD2	2.03	0.40

There are no symmetry-related clashes.

5.3 Torsion angles

5.3.1 Protein backbone

In the following table, the Percentiles column shows the percent Ramachandran outliers of the chain as a percentile score with respect to all X-ray entries followed by that with respect to entries of similar resolution.

The Analysed column shows the number of residues for which the backbone conformation was analysed, and the total number of residues.

Mol	Chain	Analysed	Favoured	Allowed	Outliers	Percentiles	
1	A	158/167 (95%)	154 (98%)	4 (2%)	0	100	100
1	B	164/167 (98%)	157 (96%)	4 (2%)	3 (2%)	10	4
1	C	164/167 (98%)	156 (95%)	6 (4%)	2 (1%)	15	9
All	All	486/501 (97%)	467 (96%)	14 (3%)	5 (1%)	18	12

All (5) Ramachandran outliers are listed below:

Mol	Chain	Res	Type
1	B	158	SER
1	B	159	ASN
1	C	55	LYS
1	B	47	ASP
1	C	63	ARG

5.3.2 Protein sidechains ⓘ

In the following table, the Percentiles column shows the percent sidechain outliers of the chain as a percentile score with respect to all X-ray entries followed by that with respect to entries of similar resolution.

The Analysed column shows the number of residues for which the sidechain conformation was analysed, and the total number of residues.

Mol	Chain	Analysed	Rotameric	Outliers	Percentiles	
1	A	130/140 (93%)	128 (98%)	2 (2%)	70	76
1	B	134/140 (96%)	131 (98%)	3 (2%)	57	62
1	C	134/140 (96%)	131 (98%)	3 (2%)	57	62
All	All	398/420 (95%)	390 (98%)	8 (2%)	60	66

All (8) residues with a non-rotameric sidechain are listed below:

Mol	Chain	Res	Type
1	A	88	LEU
1	A	145	PHE
1	B	27	LYS
1	B	88	LEU
1	B	145	PHE
1	C	53	ASP
1	C	88	LEU
1	C	145	PHE

Some sidechains can be flipped to improve hydrogen bonding and reduce clashes. All (6) such sidechains are listed below:

Mol	Chain	Res	Type
1	A	128	ASN
1	A	142	ASN
1	B	128	ASN
1	B	142	ASN
1	C	128	ASN
1	C	142	ASN

5.3.3 RNA ⓘ

There are no RNA molecules in this entry.

5.4 Non-standard residues in protein, DNA, RNA chains ⓘ

3 non-standard protein/DNA/RNA residues are modelled in this entry.

In the following table, the Counts columns list the number of bonds (or angles) for which Mogul statistics could be retrieved, the number of bonds (or angles) that are observed in the model and the number of bonds (or angles) that are defined in the chemical component dictionary. The Link column lists molecule types, if any, to which the group is linked. The Z score for a bond length (or angle) is the number of standard deviations the observed value is removed from the expected value. A bond length (or angle) with $|Z| > 2$ is considered an outlier worth inspection. RMSZ is the root-mean-square of all Z scores of the bond lengths (or angles).

Mol	Type	Chain	Res	Link	Bond lengths			Bond angles		
					Counts	RMSZ	# Z > 2	Counts	RMSZ	# Z > 2
1	AR4	A	101	1	18,18,20	2.12	4 (22%)	20,24,29	1.79	2 (10%)
1	AR4	B	101	1	18,18,20	2.15	4 (22%)	20,24,29	1.86	3 (15%)
1	AR4	C	101	1	18,18,20	2.17	3 (16%)	20,24,29	1.77	3 (15%)

In the following table, the Chirals column lists the number of chiral outliers, the number of chiral centers analysed, the number of these observed in the model and the number defined in the chemical component dictionary. Similar counts are reported in the Torsion and Rings columns. '-' means no outliers of that kind were identified.

Mol	Type	Chain	Res	Link	Chirals	Torsions	Rings
1	AR4	A	101	1	-	0/11/29/35	0/1/1/1
1	AR4	B	101	1	-	0/11/29/35	0/1/1/1
1	AR4	C	101	1	-	0/11/29/35	0/1/1/1

All (11) bond length outliers are listed below:

Mol	Chain	Res	Type	Atoms	Z	Observed(Å)	Ideal(Å)
1	C	101	AR4	O3'-C3'	-7.57	1.25	1.43
1	B	101	AR4	O3'-C3'	-7.48	1.25	1.43
1	A	101	AR4	O3'-C3'	-7.40	1.25	1.43
1	B	101	AR4	OE2-C1'	-3.47	1.37	1.43
1	C	101	AR4	OE2-C1'	-3.04	1.38	1.43
1	A	101	AR4	OE2-C1'	-3.04	1.38	1.43
1	A	101	AR4	OE2-CD	-2.01	1.28	1.34
1	B	101	AR4	OE2-CD	-2.01	1.28	1.34
1	B	101	AR4	CA-C	2.12	1.53	1.50
1	A	101	AR4	CA-C	2.34	1.53	1.50
1	C	101	AR4	CA-C	2.66	1.53	1.50

All (8) bond angle outliers are listed below:

Mol	Chain	Res	Type	Atoms	Z	Observed(°)	Ideal(°)
1	B	101	AR4	O4'-C1'-OE2	-2.18	104.59	108.92
1	C	101	AR4	O4'-C1'-OE2	-2.09	104.79	108.92
1	C	101	AR4	O4'-C4'-C5'	3.32	116.27	109.16
1	A	101	AR4	O4'-C4'-C5'	3.37	116.37	109.16
1	B	101	AR4	O4'-C4'-C5'	3.57	116.80	109.16
1	C	101	AR4	C2'-C3'-C4'	4.80	108.79	102.39
1	A	101	AR4	C2'-C3'-C4'	5.28	109.43	102.39
1	B	101	AR4	C2'-C3'-C4'	5.39	109.58	102.39

There are no chirality outliers.

There are no torsion outliers.

There are no ring outliers.

No monomer is involved in short contacts.

5.5 Carbohydrates [i](#)

There are no carbohydrates in this entry.

5.6 Ligand geometry [i](#)

3 ligands are modelled in this entry.

In the following table, the Counts columns list the number of bonds (or angles) for which Mogul statistics could be retrieved, the number of bonds (or angles) that are observed in the model and the number of bonds (or angles) that are defined in the chemical component dictionary. The Link column lists molecule types, if any, to which the group is linked. The Z score for a bond length (or angle) is the number of standard deviations the observed value is removed from the expected value. A bond length (or angle) with $|Z| > 2$ is considered an outlier worth inspection. RMSZ is the root-mean-square of all Z scores of the bond lengths (or angles).

Mol	Type	Chain	Res	Link	Bond lengths			Bond angles		
					Counts	RMSZ	$\# Z > 2$	Counts	RMSZ	$\# Z > 2$
2	ADE	A	1245	-	9,11,11	1.29	2 (22%)	7,15,15	1.36	1 (14%)
2	ADE	B	1246	-	9,11,11	1.16	2 (22%)	7,15,15	1.34	1 (14%)
2	ADE	C	1247	-	9,11,11	1.37	2 (22%)	7,15,15	1.34	1 (14%)

In the following table, the Chirals column lists the number of chiral outliers, the number of chiral centers analysed, the number of these observed in the model and the number defined in the chemical component dictionary. Similar counts are reported in the Torsion and Rings columns. '-' means no outliers of that kind were identified.

Mol	Type	Chain	Res	Link	Chirals	Torsions	Rings
2	ADE	A	1245	-	-	0/0/0/0	0/2/2/2
2	ADE	B	1246	-	-	0/0/0/0	0/2/2/2
2	ADE	C	1247	-	-	0/0/0/0	0/2/2/2

All (6) bond length outliers are listed below:

Mol	Chain	Res	Type	Atoms	Z	Observed(Å)	Ideal(Å)
2	B	1246	ADE	C2-N3	2.04	1.35	1.32
2	A	1245	ADE	C2-N3	2.18	1.35	1.32
2	B	1246	ADE	C4-N9	2.36	1.39	1.34
2	C	1247	ADE	C2-N3	2.48	1.36	1.32
2	A	1245	ADE	C4-N9	2.55	1.39	1.34
2	C	1247	ADE	C4-N9	2.63	1.39	1.34

All (3) bond angle outliers are listed below:

Mol	Chain	Res	Type	Atoms	Z	Observed(°)	Ideal(°)
2	A	1245	ADE	N3-C2-N1	-2.92	126.31	128.86
2	C	1247	ADE	N3-C2-N1	-2.81	126.41	128.86
2	B	1246	ADE	N3-C2-N1	-2.76	126.45	128.86

There are no chirality outliers.

There are no torsion outliers.

There are no ring outliers.

No monomer is involved in short contacts.

5.7 Other polymers [i](#)

There are no such residues in this entry.

5.8 Polymer linkage issues [i](#)

There are no chain breaks in this entry.

6 Fit of model and data

6.1 Protein, DNA and RNA chains

In the following table, the column labelled ‘#RSRZ > 2’ contains the number (and percentage) of RSRZ outliers, followed by percent RSRZ outliers for the chain as percentile scores relative to all X-ray entries and entries of similar resolution. The OWAB column contains the minimum, median, 95th percentile and maximum values of the occupancy-weighted average B-factor per residue. The column labelled ‘Q < 0.9’ lists the number of (and percentage) of residues with an average occupancy less than 0.9.

Mol	Chain	Analysed	<RSRZ>	#RSRZ>2	OWAB(Å ²)	Q<0.9
1	A	164/167 (98%)	0.37	13 (7%) 13 17	19, 31, 62, 88	0
1	B	166/167 (99%)	0.20	13 (7%) 14 18	17, 28, 65, 95	0
1	C	166/167 (99%)	0.48	16 (9%) 9 11	15, 30, 76, 119	0
All	All	496/501 (99%)	0.35	42 (8%) 11 15	15, 30, 68, 119	0

All (42) RSRZ outliers are listed below:

Mol	Chain	Res	Type	RSRZ
1	C	59	ILE	8.3
1	C	1	MET	5.8
1	A	59	ILE	5.6
1	C	57	PRO	5.3
1	C	107	ALA	5.2
1	B	59	ILE	4.9
1	A	167	TYR	4.8
1	C	17	TYR	4.6
1	C	53	ASP	4.5
1	C	56	ASN	4.2
1	C	167	TYR	4.0
1	C	58	GLU	3.9
1	A	108	MET	3.7
1	C	108	MET	3.6
1	C	55	LYS	3.5
1	C	62	ILE	3.3
1	B	108	MET	3.3
1	A	143	THR	3.2
1	A	107	ALA	3.0
1	B	79	ILE	2.8
1	B	104	PHE	2.8
1	B	107	ALA	2.8
1	A	104	PHE	2.7

Continued on next page...

Continued from previous page...

Mol	Chain	Res	Type	RSRZ
1	B	56	ASN	2.6
1	B	109	HIS	2.6
1	A	109	HIS	2.5
1	B	167	TYR	2.4
1	A	79	ILE	2.4
1	B	17	TYR	2.3
1	C	60	GLY	2.3
1	C	155	GLU	2.3
1	A	58	GLU	2.3
1	B	47	ASP	2.3
1	B	103	GLY	2.3
1	A	19	ASP	2.2
1	A	80	SER	2.2
1	A	1	MET	2.1
1	C	61	GLY	2.1
1	A	146	GLU	2.0
1	B	76	LEU	2.0
1	C	76	LEU	2.0
1	B	93	GLN	2.0

6.2 Non-standard residues in protein, DNA, RNA chains [i](#)

In the following table, the Atoms column lists the number of modelled atoms in the group and the number defined in the chemical component dictionary. LLDF column lists the quality of electron density of the group with respect to its neighbouring residues in protein, DNA or RNA chains. The B-factors column lists the minimum, median, 95th percentile and maximum values of B factors of atoms in the group. The column labelled 'Q< 0.9' lists the number of atoms with occupancy less than 0.9.

Mol	Type	Chain	Res	Atoms	RSCC	RSR	LLDF	B-factors(Å ²)	Q<0.9
1	AR4	C	101	18/20	0.87	0.17	-	22,23,101,101	0
1	AR4	B	101	18/20	0.88	0.16	-	17,20,101,101	0
1	AR4	A	101	18/20	0.89	0.15	-	23,26,35,102	0

6.3 Carbohydrates [i](#)

There are no carbohydrates in this entry.

6.4 Ligands [i](#)

In the following table, the Atoms column lists the number of modelled atoms in the group and the number defined in the chemical component dictionary. LLDF column lists the quality of electron density of the group with respect to its neighbouring residues in protein, DNA or RNA chains. The B-factors column lists the minimum, median, 95th percentile and maximum values of B factors of atoms in the group. The column labelled 'Q< 0.9' lists the number of atoms with occupancy less than 0.9.

Mol	Type	Chain	Res	Atoms	RSCC	RSR	LLDF	B-factors(\AA^2)	Q<0.9
2	ADE	C	1247	10/10	0.92	0.18	0.15	28,30,32,32	0
2	ADE	B	1246	10/10	0.92	0.14	0.05	28,30,32,32	0
2	ADE	A	1245	10/10	0.94	0.14	-0.17	28,30,32,32	0

6.5 Other polymers [i](#)

There are no such residues in this entry.