



# wwPDB X-ray Structure Validation Summary Report ⓘ

Feb 14, 2017 – 02:57 am GMT

PDB ID : 3S2Y  
Title : Crystal structure of a chromate/uranium reductase from *Gluconacetobacter hansenii*  
Authors : Jin, H.; Zhang, Y.; Buchko, G.W.; Li, P.; Squier, T.C.; Robinson, H.; Varnum, S.M.; Long, P.E.  
Deposited on : 2011-05-17  
Resolution : 2.24 Å(reported)

This is a wwPDB X-ray Structure Validation Summary Report for a publicly released PDB entry.

We welcome your comments at [validation@mail.wwpdb.org](mailto:validation@mail.wwpdb.org)

A user guide is available at

<http://wwpdb.org/validation/2016/XrayValidationReportHelp>

with specific help available everywhere you see the ⓘ symbol.

---

The following versions of software and data (see [references ⓘ](#)) were used in the production of this report:

MolProbity	:	4.02b-467
Mogul	:	1.7.2 (RC1), CSD as538be (2017)
Xtriage (Phenix)	:	1.9-1692
EDS	:	trunk28620
Percentile statistics	:	20161228.v01 (using entries in the PDB archive December 28th 2016)
Refmac	:	5.8.0135
CCP4	:	6.5.0
Ideal geometry (proteins)	:	Engh & Huber (2001)
Ideal geometry (DNA, RNA)	:	Parkinson et al. (1996)
Validation Pipeline (wwPDB-VP)	:	recalc28949

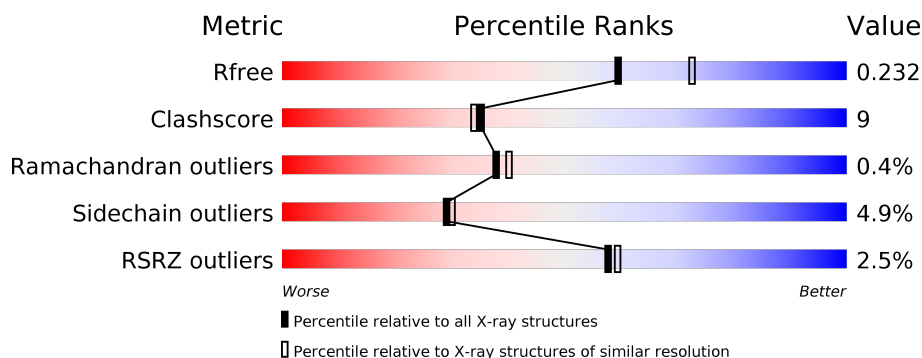
# 1 Overall quality at a glance ⓘ

The following experimental techniques were used to determine the structure:

*X-RAY DIFFRACTION*

The reported resolution of this entry is 2.24 Å.

Percentile scores (ranging between 0-100) for global validation metrics of the entry are shown in the following graphic. The table shows the number of entries on which the scores are based.



Metric	Whole archive (#Entries)	Similar resolution (#Entries, resolution range(Å))
$R_{free}$	100719	1804 (2.26-2.22)
Clashscore	112137	1957 (2.26-2.22)
Ramachandran outliers	110173	1916 (2.26-2.22)
Sidechain outliers	110143	1917 (2.26-2.22)
RSRZ outliers	101464	1809 (2.26-2.22)

The table below summarises the geometric issues observed across the polymeric chains and their fit to the electron density. The red, orange, yellow and green segments on the lower bar indicate the fraction of residues that contain outliers for  $\geq 3$ , 2, 1 and 0 types of geometric quality criteria. A grey segment represents the fraction of residues that are not modelled. The numeric value for each fraction is indicated below the corresponding segment, with a dot representing fractions  $\leq 5\%$ . The upper red bar (where present) indicates the fraction of residues that have poor fit to the electron density. The numeric value is given above the bar.

Mol	Chain	Length	Quality of chain
1	A	199	<div> <div>3%</div> <div> <div></div> <div>76%</div> <div>16%</div> <div>• 8%</div> </div> </div>
1	B	199	<div> <div>2%</div> <div> <div></div> <div>76%</div> <div>14%</div> <div>• 9%</div> </div> </div>
1	C	199	<div> <div>2%</div> <div> <div></div> <div>76%</div> <div>14%</div> <div>• 9%</div> </div> </div>
1	D	199	<div> <div>3%</div> <div> <div></div> <div>72%</div> <div>17%</div> <div>•• 9%</div> </div> </div>

The following table lists non-polymeric compounds, carbohydrate monomers and non-standard residues in protein, DNA, RNA chains that are outliers for geometric or electron-density-fit crite-

ria:

Mol	Type	Chain	Res	Chirality	Geometry	Clashes	Electron density
4	PG4	B	202	-	-	-	X

## 2 Entry composition

There are 5 unique types of molecules in this entry. The entry contains 5928 atoms, of which 0 are hydrogens and 0 are deuteriums.

In the tables below, the ZeroOcc column contains the number of atoms modelled with zero occupancy, the AltConf column contains the number of residues with at least one atom in alternate conformation and the Trace column contains the number of residues modelled with at most 2 atoms.

- Molecule 1 is a protein called Chromate reductase.

Mol	Chain	Residues	Atoms					ZeroOcc	AltConf	Trace
1	A	184	Total	C	N	O	S	0	0	0
			1376	881	236	256	3			
1	B	182	Total	C	N	O	S	0	0	0
			1364	875	234	252	3			
1	C	181	Total	C	N	O	S	0	0	0
			1356	869	233	251	3			
1	D	182	Total	C	N	O	S	0	0	0
			1364	875	234	252	3			

There are 24 discrepancies between the modelled and reference sequences:

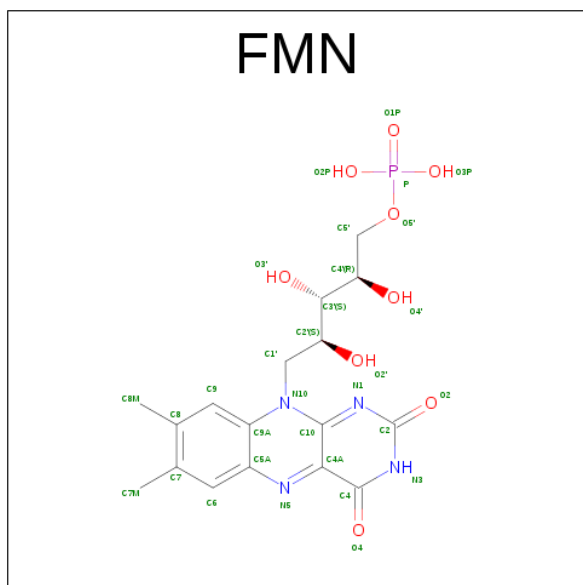
Chain	Residue	Modelled	Actual	Comment	Reference
A	194	HIS	-	EXPRESSION TAG	UNP D5QFC5
A	195	HIS	-	EXPRESSION TAG	UNP D5QFC5
A	196	HIS	-	EXPRESSION TAG	UNP D5QFC5
A	197	HIS	-	EXPRESSION TAG	UNP D5QFC5
A	198	HIS	-	EXPRESSION TAG	UNP D5QFC5
A	199	HIS	-	EXPRESSION TAG	UNP D5QFC5
B	194	HIS	-	EXPRESSION TAG	UNP D5QFC5
B	195	HIS	-	EXPRESSION TAG	UNP D5QFC5
B	196	HIS	-	EXPRESSION TAG	UNP D5QFC5
B	197	HIS	-	EXPRESSION TAG	UNP D5QFC5
B	198	HIS	-	EXPRESSION TAG	UNP D5QFC5
B	199	HIS	-	EXPRESSION TAG	UNP D5QFC5
C	194	HIS	-	EXPRESSION TAG	UNP D5QFC5
C	195	HIS	-	EXPRESSION TAG	UNP D5QFC5
C	196	HIS	-	EXPRESSION TAG	UNP D5QFC5
C	197	HIS	-	EXPRESSION TAG	UNP D5QFC5
C	198	HIS	-	EXPRESSION TAG	UNP D5QFC5
C	199	HIS	-	EXPRESSION TAG	UNP D5QFC5
D	194	HIS	-	EXPRESSION TAG	UNP D5QFC5
D	195	HIS	-	EXPRESSION TAG	UNP D5QFC5
D	196	HIS	-	EXPRESSION TAG	UNP D5QFC5

*Continued on next page...*

Continued from previous page...

Chain	Residue	Modelled	Actual	Comment	Reference
D	197	HIS	-	EXPRESSION TAG	UNP D5QFC5
D	198	HIS	-	EXPRESSION TAG	UNP D5QFC5
D	199	HIS	-	EXPRESSION TAG	UNP D5QFC5

- Molecule 2 is FLAVIN MONONUCLEOTIDE (three-letter code: FMN) (formula:  $C_{17}H_{21}N_4O_9P$ ).

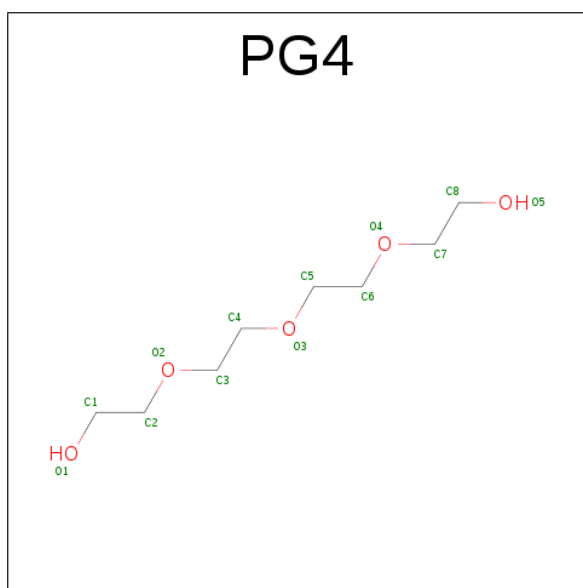


Mol	Chain	Residues	Atoms					ZeroOcc	AltConf
2	A	1	Total	C	N	O	P	0	0
			31	17	4	9	1		
2	B	1	Total	C	N	O	P	0	0
			31	17	4	9	1		
2	C	1	Total	C	N	O	P	0	0
			31	17	4	9	1		
2	D	1	Total	C	N	O	P	0	0
			31	17	4	9	1		

- Molecule 3 is CHLORIDE ION (three-letter code: CL) (formula:  $Cl$ ).

Mol	Chain	Residues	Atoms		ZeroOcc	AltConf
3	B	1	Total	Cl	0	0
			1	1		
3	A	1	Total	Cl	0	0
			1	1		
3	C	1	Total	Cl	0	0
			1	1		

- Molecule 4 is TETRAETHYLENE GLYCOL (three-letter code: PG4) (formula:  $C_8H_{18}O_5$ ).



Mol	Chain	Residues	Atoms			ZeroOcc	AltConf
4	B	1	Total	C	O	0	0
			13	8	5		

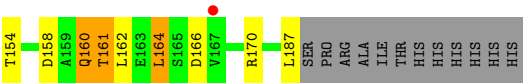
- Molecule 5 is water.

Mol	Chain	Residues	Atoms		ZeroOcc	AltConf
5	A	91	Total	O	0	0
			91	91		
5	B	86	Total	O	0	0
			86	86		
5	C	81	Total	O	0	0
			81	81		
5	D	70	Total	O	0	0
			70	70		



- Molecule 1: Chromate reductase







## 4 Data and refinement statistics

Property	Value	Source
Space group	C 1 2 1	Depositor
Cell constants a, b, c, $\alpha$ , $\beta$ , $\gamma$	119.68Å 90.05Å 95.23Å 90.00° 119.61° 90.00°	Depositor
Resolution (Å)	45.82 – 2.24 45.82 – 2.24	Depositor EDS
% Data completeness (in resolution range)	99.0 (45.82-2.24) 99.0 (45.82-2.24)	Depositor EDS
$R_{merge}$	(Not available)	Depositor
$R_{sym}$	(Not available)	Depositor
$\langle I/\sigma(I) \rangle$ <sup>1</sup>	2.68 (at 2.24Å)	Xtriage
Refinement program	PHENIX (phenix.refine: 1.7_650)	Depositor
R, $R_{free}$	0.193 , 0.238 0.184 , 0.232	Depositor DCC
$R_{free}$ test set	2114 reflections (5.07%)	DCC
Wilson B-factor (Å <sup>2</sup> )	35.0	Xtriage
Anisotropy	0.118	Xtriage
Bulk solvent $k_{sol}$ (e/Å <sup>3</sup> ), $B_{sol}$ (Å <sup>2</sup> )	0.34 , 42.0	EDS
L-test for twinning <sup>2</sup>	$\langle  L  \rangle = 0.48$ , $\langle L^2 \rangle = 0.31$	Xtriage
Estimated twinning fraction	No twinning to report.	Xtriage
$F_o, F_c$ correlation	0.95	EDS
Total number of atoms	5928	wwPDB-VP
Average B, all atoms (Å <sup>2</sup> )	36.0	wwPDB-VP

Xtriage's analysis on translational NCS is as follows: *The largest off-origin peak in the Patterson function is 7.54% of the height of the origin peak. No significant pseudotranslation is detected.*

<sup>1</sup>Intensities estimated from amplitudes.

<sup>2</sup>Theoretical values of  $\langle |L| \rangle$ ,  $\langle L^2 \rangle$  for acentric reflections are 0.5, 0.333 respectively for untwinned datasets, and 0.375, 0.2 for perfectly twinned datasets.

## 5 Model quality [i](#)

### 5.1 Standard geometry [i](#)

Bond lengths and bond angles in the following residue types are not validated in this section: FMN, PG4, CL

The Z score for a bond length (or angle) is the number of standard deviations the observed value is removed from the expected value. A bond length (or angle) with  $|Z| > 5$  is considered an outlier worth inspection. RMSZ is the root-mean-square of all Z scores of the bond lengths (or angles).

Mol	Chain	Bond lengths		Bond angles	
		RMSZ	$\# Z  > 5$	RMSZ	$\# Z  > 5$
1	A	0.43	0/1405	0.60	0/1922
1	B	0.40	0/1393	0.56	0/1905
1	C	0.39	0/1385	0.55	0/1894
1	D	0.39	0/1393	0.58	0/1905
All	All	0.40	0/5576	0.57	0/7626

There are no bond length outliers.

There are no bond angle outliers.

There are no chirality outliers.

There are no planarity outliers.

### 5.2 Too-close contacts [i](#)

In the following table, the Non-H and H(model) columns list the number of non-hydrogen atoms and hydrogen atoms in the chain respectively. The H(added) column lists the number of hydrogen atoms added and optimized by MolProbity. The Clashes column lists the number of clashes within the asymmetric unit, whereas Symm-Clashes lists symmetry related clashes.

Mol	Chain	Non-H	H(model)	H(added)	Clashes	Symm-Clashes
1	A	1376	0	1405	20	0
1	B	1364	0	1396	28	0
1	C	1356	0	1385	26	0
1	D	1364	0	1396	31	0
2	A	31	0	19	1	0
2	B	31	0	19	5	0
2	C	31	0	19	4	0
2	D	31	0	19	2	0
3	A	1	0	0	0	0

*Continued on next page...*

*Continued from previous page...*

Mol	Chain	Non-H	H(model)	H(added)	Clashes	Symm-Clashes
3	B	1	0	0	0	0
3	C	1	0	0	0	0
4	B	13	0	18	0	0
5	A	91	0	0	0	0
5	B	86	0	0	1	0
5	C	81	0	0	3	0
5	D	70	0	0	3	0
All	All	5928	0	5676	105	0

The all-atom clashscore is defined as the number of clashes found per 1000 atoms (including hydrogen atoms). The all-atom clashscore for this structure is 9.

The worst 5 of 105 close contacts within the same asymmetric unit are listed below, sorted by their clash magnitude.

Atom-1	Atom-2	Interatomic distance (Å)	Clash overlap (Å)
1:C:185:ARG:HA	1:C:186:THR:C	1.86	0.95
1:D:103:SER:HB2	1:D:104:PRO:CD	1.99	0.91
2:B:201:FMN:HM82	1:C:101:ARG:HD3	1.62	0.80
1:D:187:LEU:O	5:D:285:HOH:O	2.03	0.76
1:D:103:SER:HB2	1:D:104:PRO:HD3	1.68	0.76

There are no symmetry-related clashes.

## 5.3 Torsion angles [i](#)

### 5.3.1 Protein backbone [i](#)

In the following table, the Percentiles column shows the percent Ramachandran outliers of the chain as a percentile score with respect to all X-ray entries followed by that with respect to entries of similar resolution.

The Analysed column shows the number of residues for which the backbone conformation was analysed, and the total number of residues.

Mol	Chain	Analysed	Favoured	Allowed	Outliers	Percentiles	
1	A	182/199 (92%)	177 (97%)	5 (3%)	0	100	100
1	B	180/199 (90%)	178 (99%)	2 (1%)	0	100	100
1	C	179/199 (90%)	173 (97%)	5 (3%)	1 (1%)	28	27
1	D	180/199 (90%)	173 (96%)	5 (3%)	2 (1%)	17	11

*Continued on next page...*

*Continued from previous page...*

Mol	Chain	Analysed	Favoured	Allowed	Outliers	Percentiles	
All	All	721/796 (91%)	701 (97%)	17 (2%)	3 (0%)	38	40

All (3) Ramachandran outliers are listed below:

Mol	Chain	Res	Type
1	D	103	SER
1	D	161	THR
1	C	184	ALA

### 5.3.2 Protein sidechains ⓘ

In the following table, the Percentiles column shows the percent sidechain outliers of the chain as a percentile score with respect to all X-ray entries followed by that with respect to entries of similar resolution.

The Analysed column shows the number of residues for which the sidechain conformation was analysed, and the total number of residues.

Mol	Chain	Analysed	Rotameric	Outliers	Percentiles	
1	A	145/159 (91%)	134 (92%)	11 (8%)	15	12
1	B	143/159 (90%)	139 (97%)	4 (3%)	49	57
1	C	142/159 (89%)	138 (97%)	4 (3%)	49	57
1	D	143/159 (90%)	134 (94%)	9 (6%)	21	18
All	All	573/636 (90%)	545 (95%)	28 (5%)	29	30

5 of 28 residues with a non-rotameric sidechain are listed below:

Mol	Chain	Res	Type
1	B	105	GLN
1	C	20	SER
1	D	160	GLN
1	B	121	MET
1	B	152	GLN

Some sidechains can be flipped to improve hydrogen bonding and reduce clashes. All (4) such sidechains are listed below:

Mol	Chain	Res	Type
1	B	128	GLN
1	C	50	HIS

*Continued on next page...*

*Continued from previous page...*

Mol	Chain	Res	Type
1	D	53	GLN
1	D	160	GLN

### 5.3.3 RNA ⓘ

There are no RNA molecules in this entry.

## 5.4 Non-standard residues in protein, DNA, RNA chains ⓘ

There are no non-standard protein/DNA/RNA residues in this entry.

## 5.5 Carbohydrates ⓘ

There are no carbohydrates in this entry.

## 5.6 Ligand geometry ⓘ

Of 8 ligands modelled in this entry, 3 are monoatomic - leaving 5 for Mogul analysis.

In the following table, the Counts columns list the number of bonds (or angles) for which Mogul statistics could be retrieved, the number of bonds (or angles) that are observed in the model and the number of bonds (or angles) that are defined in the chemical component dictionary. The Link column lists molecule types, if any, to which the group is linked. The Z score for a bond length (or angle) is the number of standard deviations the observed value is removed from the expected value. A bond length (or angle) with  $|Z| > 2$  is considered an outlier worth inspection. RMSZ is the root-mean-square of all Z scores of the bond lengths (or angles).

Mol	Type	Chain	Res	Link	Bond lengths			Bond angles		
					Counts	RMSZ	$\# Z  > 2$	Counts	RMSZ	$\# Z  > 2$
2	FMN	A	200	-	31,33,33	1.21	4 (12%)	38,50,50	1.67	4 (10%)
2	FMN	B	201	-	31,33,33	1.33	4 (12%)	38,50,50	1.51	5 (13%)
4	PG4	B	202	-	12,12,12	0.49	0	11,11,11	0.44	0
2	FMN	C	200	-	31,33,33	1.30	5 (16%)	38,50,50	1.64	5 (13%)
2	FMN	D	200	-	31,33,33	1.33	4 (12%)	38,50,50	1.60	5 (13%)

In the following table, the Chirals column lists the number of chiral outliers, the number of chiral centers analysed, the number of these observed in the model and the number defined in the chemical component dictionary. Similar counts are reported in the Torsion and Rings columns. '-' means no outliers of that kind were identified.

Mol	Type	Chain	Res	Link	Chirals	Torsions	Rings
2	FMN	A	200	-	-	0/16/18/18	0/3/3/3
2	FMN	B	201	-	-	0/16/18/18	0/3/3/3
4	PG4	B	202	-	-	0/10/10/10	0/0/0/0
2	FMN	C	200	-	-	0/16/18/18	0/3/3/3
2	FMN	D	200	-	-	0/16/18/18	0/3/3/3

The worst 5 of 17 bond length outliers are listed below:

Mol	Chain	Res	Type	Atoms	Z	Observed(Å)	Ideal(Å)
2	A	200	FMN	C5A-N5	2.01	1.38	1.35
2	D	200	FMN	C5A-N5	2.09	1.38	1.35
2	C	200	FMN	C1'-N10	2.36	1.50	1.48
2	B	201	FMN	C5A-N5	2.43	1.39	1.35
2	A	200	FMN	C4-N3	2.46	1.37	1.33

The worst 5 of 19 bond angle outliers are listed below:

Mol	Chain	Res	Type	Atoms	Z	Observed(°)	Ideal(°)
2	A	200	FMN	C4A-C4-N3	-3.46	118.56	123.48
2	B	201	FMN	C4A-C4-N3	-3.26	118.84	123.48
2	D	200	FMN	C4A-C4-N3	-3.17	118.97	123.48
2	C	200	FMN	C4A-C4-N3	-3.06	119.13	123.48
2	B	201	FMN	C1'-N10-C9A	2.10	120.27	118.35

There are no chirality outliers.

There are no torsion outliers.

There are no ring outliers.

4 monomers are involved in 12 short contacts:

Mol	Chain	Res	Type	Clashes	Symm-Clashes
2	A	200	FMN	1	0
2	B	201	FMN	5	0
2	C	200	FMN	4	0
2	D	200	FMN	2	0

## 5.7 Other polymers

There are no such residues in this entry.

## 5.8 Polymer linkage issues ⓘ

There are no chain breaks in this entry.

## 6 Fit of model and data [i](#)

### 6.1 Protein, DNA and RNA chains [i](#)

In the following table, the column labelled ‘#RSRZ> 2’ contains the number (and percentage) of RSRZ outliers, followed by percent RSRZ outliers for the chain as percentile scores relative to all X-ray entries and entries of similar resolution. The OWAB column contains the minimum, median, 95<sup>th</sup> percentile and maximum values of the occupancy-weighted average B-factor per residue. The column labelled ‘Q< 0.9’ lists the number of (and percentage) of residues with an average occupancy less than 0.9.

Mol	Chain	Analysed	<RSRZ>	#RSRZ>2	OWAB(Å <sup>2</sup> )	Q<0.9
1	A	184/199 (92%)	-0.36	5 (2%) 55 56	20, 32, 56, 83	0
1	B	182/199 (91%)	-0.28	4 (2%) 62 64	24, 32, 49, 70	0
1	C	181/199 (90%)	-0.32	4 (2%) 62 64	24, 32, 51, 72	0
1	D	182/199 (91%)	-0.03	5 (2%) 55 56	25, 38, 59, 72	0
All	All	729/796 (91%)	-0.25	18 (2%) 58 59	20, 34, 55, 83	0

The worst 5 of 18 RSRZ outliers are listed below:

Mol	Chain	Res	Type	RSRZ
1	C	160	GLN	3.9
1	B	6	PRO	3.6
1	D	167	VAL	3.5
1	A	160	GLN	3.5
1	A	162	LEU	3.2

### 6.2 Non-standard residues in protein, DNA, RNA chains [i](#)

There are no non-standard protein/DNA/RNA residues in this entry.

### 6.3 Carbohydrates [i](#)

There are no carbohydrates in this entry.

### 6.4 Ligands [i](#)

In the following table, the Atoms column lists the number of modelled atoms in the group and the number defined in the chemical component dictionary. LLDF column lists the quality of electron density of the group with respect to its neighbouring residues in protein, DNA or RNA chains. The B-factors column lists the minimum, median, 95<sup>th</sup> percentile and maximum values of B factors



of atoms in the group. The column labelled 'Q < 0.9' lists the number of atoms with occupancy less than 0.9.

Mol	Type	Chain	Res	Atoms	RSCC	RSR	LLDF	B-factors(Å <sup>2</sup> )	Q<0.9
4	PG4	B	202	13/13	0.92	0.11	2.35	31,39,49,51	0
2	FMN	B	201	31/31	0.95	0.13	0.44	25,30,35,43	0
2	FMN	D	200	31/31	0.92	0.13	0.20	27,35,43,51	0
2	FMN	A	200	31/31	0.95	0.10	-0.00	27,30,35,37	0
2	FMN	C	200	31/31	0.94	0.10	-0.03	25,30,34,37	0
3	CL	A	201	1/1	0.94	0.19	-	52,52,52,52	0
3	CL	C	201	1/1	0.94	0.12	-	54,54,54,54	0
3	CL	B	200	1/1	0.99	0.13	-	50,50,50,50	0

## 6.5 Other polymers [i](#)

There are no such residues in this entry.