



# Full wwPDB X-ray Structure Validation Report ⓘ

Jun 19, 2017 – 03:39 PM EDT

PDB ID : 4S35  
Title : AMPPCP and TMP bound Crystal structure of thymidylate kinase (aq\_969)  
from Aquifex Aeolicus VF5  
Authors : Biswas, A.; Jeyakanthan, J.; Sekar, K.; Kuramitsu, S.; Yokoyama, S.  
Deposited on : 2015-01-26  
Resolution : 1.55 Å(reported)

This is a Full wwPDB X-ray Structure Validation Report for a publicly released PDB entry.

We welcome your comments at [validation@mail.wwpdb.org](mailto:validation@mail.wwpdb.org)

A user guide is available at

<http://wwpdb.org/validation/2016/XrayValidationReportHelp>

with specific help available everywhere you see the ⓘ symbol.

---

The following versions of software and data (see [references ⓘ](#)) were used in the production of this report:

MolProbity : 4.02b-467  
Mogul : 1.7.2 (RC1), CSD as538be (2017)  
Xtriage (Phenix) : 1.9-1692  
EDS : rb-20029077  
Percentile statistics : 20161228.v01 (using entries in the PDB archive December 28th 2016)  
Refmac : 5.8.0135  
CCP4 : 6.5.0  
Ideal geometry (proteins) : Engh & Huber (2001)  
Ideal geometry (DNA, RNA) : Parkinson et al. (1996)  
Validation Pipeline (wwPDB-VP) : rb-20029077

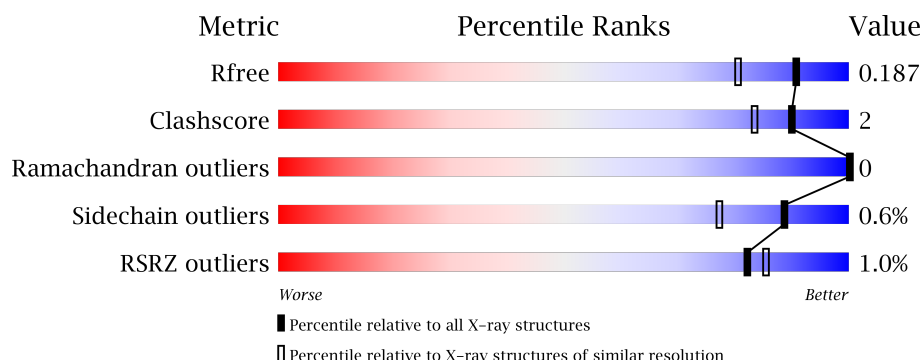
# 1 Overall quality at a glance ⓘ

The following experimental techniques were used to determine the structure:

## *X-RAY DIFFRACTION*

The reported resolution of this entry is 1.55 Å.

Percentile scores (ranging between 0-100) for global validation metrics of the entry are shown in the following graphic. The table shows the number of entries on which the scores are based.



Metric	Whole archive (#Entries)	Similar resolution (#Entries, resolution range(Å))
$R_{free}$	100719	1088 (1.56-1.56)
Clashscore	112137	1132 (1.56-1.56)
Ramachandran outliers	110173	1110 (1.56-1.56)
Sidechain outliers	110143	1108 (1.56-1.56)
RSRZ outliers	101464	1089 (1.56-1.56)

The table below summarises the geometric issues observed across the polymeric chains and their fit to the electron density. The red, orange, yellow and green segments on the lower bar indicate the fraction of residues that contain outliers for  $\geq 3$ , 2, 1 and 0 types of geometric quality criteria. A grey segment represents the fraction of residues that are not modelled. The numeric value for each fraction is indicated below the corresponding segment, with a dot representing fractions  $\leq 5\%$ . The upper red bar (where present) indicates the fraction of residues that have poor fit to the electron density. The numeric value is given above the bar.

Mol	Chain	Length	Quality of chain
1	A	195	<div> <div>0.1%</div> <div>89%</div> <div>9%</div> <div>0.1%</div> </div>
1	B	195	<div> <div>2%</div> <div>90%</div> <div>9%</div> <div>0.1%</div> </div>

The following table lists non-polymeric compounds, carbohydrate monomers and non-standard residues in protein, DNA, RNA chains that are outliers for geometric or electron-density-fit criteria:

Mol	Type	Chain	Res	Chirality	Geometry	Clashes	Electron density
5	EDO	B	206	-	-	-	X

## 2 Entry composition [i](#)

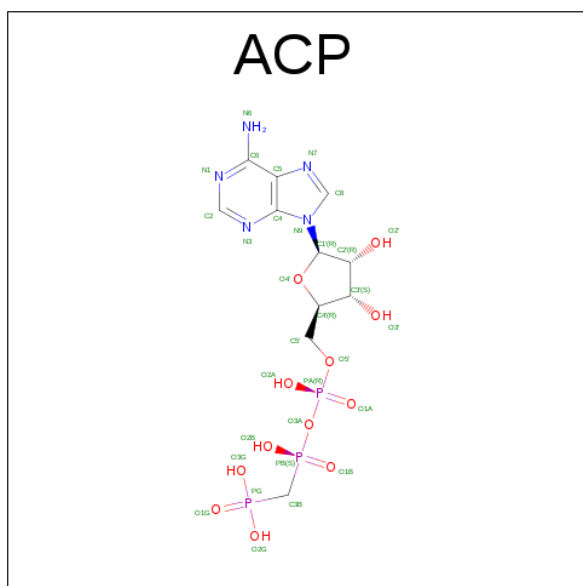
There are 7 unique types of molecules in this entry. The entry contains 3645 atoms, of which 0 are hydrogens and 0 are deuteriums.

In the tables below, the ZeroOcc column contains the number of atoms modelled with zero occupancy, the AltConf column contains the number of residues with at least one atom in alternate conformation and the Trace column contains the number of residues modelled with at most 2 atoms.

- Molecule 1 is a protein called Thymidylate kinase.

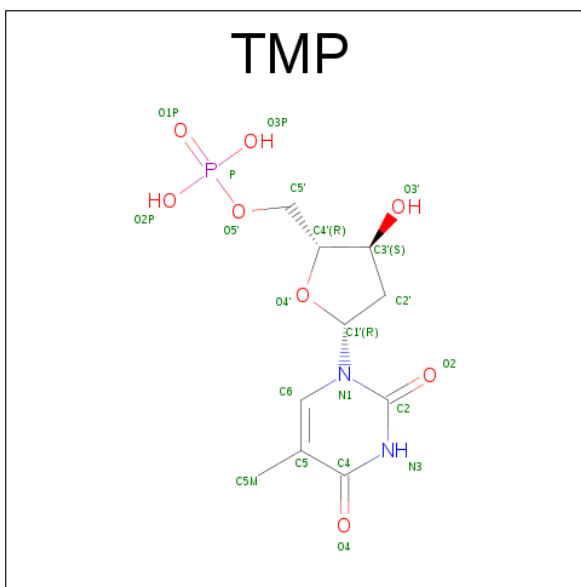
Mol	Chain	Residues	Atoms					ZeroOcc	AltConf	Trace
1	A	195	Total	C	N	O	S	0	12	0
			1605	1049	262	293	1			
1	B	194	Total	C	N	O	S	0	4	0
			1548	1009	247	291	1			

- Molecule 2 is PHOSPHOMETHYLPHOSPHONIC ACID ADENYLATE ESTER (three-letter code: ACP) (formula:  $C_{11}H_{18}N_5O_{12}P_3$ ).



Mol	Chain	Residues	Atoms					ZeroOcc	AltConf
2	A	1	Total	C	N	O	P	0	0
			31	11	5	12	3		
2	B	1	Total	C	N	O	P	0	0
			31	11	5	12	3		

- Molecule 3 is THYMIDINE-5'-PHOSPHATE (three-letter code: TMP) (formula:  $C_{10}H_{15}N_2O_8P$ ).

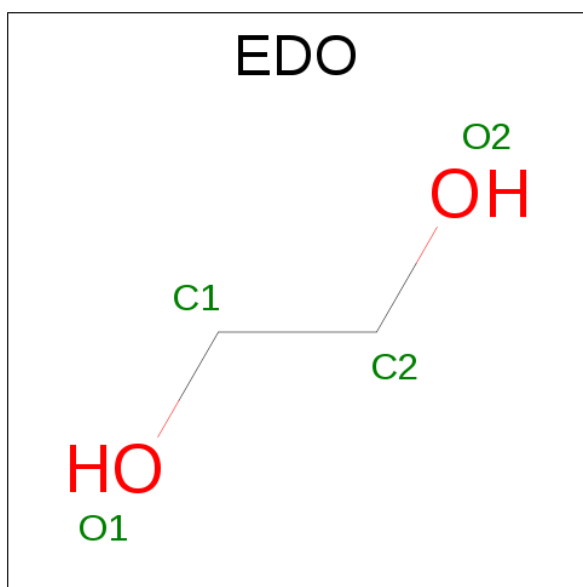


Mol	Chain	Residues	Atoms					ZeroOcc	AltConf
3	A	1	Total	C	N	O	P	0	1
			42	20	4	16	2		
3	B	1	Total	C	N	O	P	0	0
			21	10	2	8	1		

- Molecule 4 is MAGNESIUM ION (three-letter code: MG) (formula: Mg).

Mol	Chain	Residues	Atoms		ZeroOcc	AltConf
4	B	2	Total	Mg	0	0
			2	2		
4	A	2	Total	Mg	0	0
			2	2		

- Molecule 5 is 1,2-ETHANEDIOL (three-letter code: EDO) (formula: C<sub>2</sub>H<sub>6</sub>O<sub>2</sub>).



Mol	Chain	Residues	Atoms			ZeroOcc	AltConf
5	A	1	Total	C	O	0	0
			4	2	2		
5	B	1	Total	C	O	0	0
			4	2	2		

- Molecule 6 is CHLORIDE ION (three-letter code: CL) (formula: Cl).

Mol	Chain	Residues	Atoms		ZeroOcc	AltConf
6	B	1	Total	Cl	0	0
			1	1		

- Molecule 7 is water.

Mol	Chain	Residues	Atoms		ZeroOcc	AltConf
7	A	220	Total	O	0	0
			220	220		
7	B	134	Total	O	0	0
			134	134		

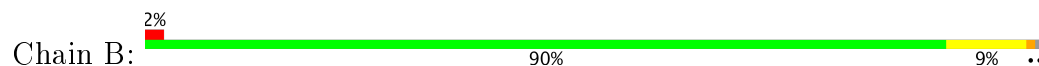
### 3 Residue-property plots [i](#)

These plots are drawn for all protein, RNA and DNA chains in the entry. The first graphic for a chain summarises the proportions of the various outlier classes displayed in the second graphic. The second graphic shows the sequence view annotated by issues in geometry and electron density. Residues are color-coded according to the number of geometric quality criteria for which they contain at least one outlier: green = 0, yellow = 1, orange = 2 and red = 3 or more. A red dot above a residue indicates a poor fit to the electron density ( $\text{RSRZ} > 2$ ). Stretches of 2 or more consecutive residues without any outlier are shown as a green connector. Residues present in the sample, but not in the model, are shown in grey.

- Molecule 1: Thymidylate kinase



- Molecule 1: Thymidylate kinase



## 4 Data and refinement statistics

Property	Value	Source
Space group	P 1 21 1	Depositor
Cell constants a, b, c, $\alpha$ , $\beta$ , $\gamma$	42.48Å 62.62Å 73.58Å 90.00° 97.97° 90.00°	Depositor
Resolution (Å)	50.00 – 1.55 21.53 – 1.55	Depositor EDS
% Data completeness (in resolution range)	98.6 (50.00-1.55) 98.6 (21.53-1.55)	Depositor EDS
$R_{merge}$	0.05	Depositor
$R_{sym}$	(Not available)	Depositor
$\langle I/\sigma(I) \rangle$ <sup>1</sup>	9.18 (at 1.55Å)	Xtriage
Refinement program	REFMAC 5.8.0073	Depositor
R, $R_{free}$	0.146 , 0.174 0.160 , 0.187	Depositor DCC
$R_{free}$ test set	2809 reflections (5.40%)	DCC
Wilson B-factor (Å <sup>2</sup> )	11.6	Xtriage
Anisotropy	0.696	Xtriage
Bulk solvent $k_{sol}$ (e/Å <sup>3</sup> ), $B_{sol}$ (Å <sup>2</sup> )	0.35 , 46.5	EDS
L-test for twinning <sup>2</sup>	$\langle  L  \rangle = 0.49$ , $\langle L^2 \rangle = 0.32$	Xtriage
Estimated twinning fraction	No twinning to report.	Xtriage
$F_o, F_c$ correlation	0.96	EDS
Total number of atoms	3645	wwPDB-VP
Average B, all atoms (Å <sup>2</sup> )	15.0	wwPDB-VP

Xtriage's analysis on translational NCS is as follows: *The largest off-origin peak in the Patterson function is 5.93% of the height of the origin peak. No significant pseudotranslation is detected.*

<sup>1</sup>Intensities estimated from amplitudes.

<sup>2</sup>Theoretical values of  $\langle |L| \rangle$ ,  $\langle L^2 \rangle$  for acentric reflections are 0.5, 0.333 respectively for untwinned datasets, and 0.375, 0.2 for perfectly twinned datasets.

## 5 Model quality [i](#)

### 5.1 Standard geometry [i](#)

Bond lengths and bond angles in the following residue types are not validated in this section: TMP, MG, ACP, EDO, CL

The Z score for a bond length (or angle) is the number of standard deviations the observed value is removed from the expected value. A bond length (or angle) with  $|Z| > 5$  is considered an outlier worth inspection. RMSZ is the root-mean-square of all Z scores of the bond lengths (or angles).

Mol	Chain	Bond lengths		Bond angles	
		RMSZ	$\# Z  > 5$	RMSZ	$\# Z  > 5$
1	A	1.20	5/1659 (0.3%)	1.23	8/2227 (0.4%)
1	B	1.20	4/1579 (0.3%)	1.29	12/2123 (0.6%)
All	All	1.20	9/3238 (0.3%)	1.26	20/4350 (0.5%)

All (9) bond length outliers are listed below:

Mol	Chain	Res	Type	Atoms	Z	Observed(Å)	Ideal(Å)
1	A	6	GLU	CD-OE2	-12.05	1.12	1.25
1	A	6	GLU	CG-CD	7.21	1.62	1.51
1	B	65	GLU	CD-OE2	6.78	1.33	1.25
1	B	6	GLU	CD-OE2	-6.24	1.18	1.25
1	B	29	TYR	CB-CG	-6.22	1.42	1.51
1	A	65	GLU	CD-OE2	5.66	1.31	1.25
1	A	60	GLU	CB-CG	-5.41	1.41	1.52
1	B	23	TYR	CA-CB	-5.26	1.42	1.53
1	A	23	TYR	CE1-CZ	-5.19	1.31	1.38

All (20) bond angle outliers are listed below:

Mol	Chain	Res	Type	Atoms	Z	Observed(°)	Ideal(°)
1	B	6	GLU	OE1-CD-OE2	11.99	137.69	123.30
1	B	106	ASP	CB-CG-OD1	9.38	126.74	118.30
1	A	106	ASP	CB-CG-OD2	7.76	125.28	118.30
1	B	79	ASP	CB-CG-OD1	7.73	125.26	118.30
1	B	124	ASP	CB-CG-OD1	7.65	125.19	118.30
1	A	58	ARG	NE-CZ-NH1	7.60	124.10	120.30
1	A	58	ARG	NE-CZ-NH2	-7.42	116.59	120.30
1	A	56	ASP	CB-CG-OD2	-7.29	111.74	118.30
1	A	68	ARG	NE-CZ-NH2	-7.01	116.79	120.30
1	A	79	ASP	CB-CG-OD1	6.78	124.40	118.30

*Continued on next page...*

*Continued from previous page...*

Mol	Chain	Res	Type	Atoms	Z	Observed(°)	Ideal(°)
1	B	56	ASP	CB-CG-OD2	-6.23	112.69	118.30
1	B	57	GLU	OE1-CD-OE2	5.98	130.48	123.30
1	A	119	ARG	NE-CZ-NH1	5.91	123.25	120.30
1	A	193	LEU	CB-CG-CD1	-5.89	100.98	111.00
1	B	147	GLU	OE1-CD-OE2	-5.72	116.44	123.30
1	B	89	ASP	CB-CG-OD2	-5.69	113.18	118.30
1	B	6	GLU	CG-CD-OE2	-5.59	107.11	118.30
1	B	79	ASP	CB-CG-OD2	-5.51	113.34	118.30
1	B	35	ARG	NE-CZ-NH1	-5.51	117.55	120.30
1	B	139	ARG	NE-CZ-NH2	5.25	122.93	120.30

There are no chirality outliers.

There are no planarity outliers.

## 5.2 Too-close contacts ⓘ

In the following table, the Non-H and H(model) columns list the number of non-hydrogen atoms and hydrogen atoms in the chain respectively. The H(added) column lists the number of hydrogen atoms added and optimized by MolProbity. The Clashes column lists the number of clashes within the asymmetric unit, whereas Symm-Clashes lists symmetry related clashes.

Mol	Chain	Non-H	H(model)	H(added)	Clashes	Symm-Clashes
1	A	1605	0	1695	9	0
1	B	1548	0	1591	5	0
2	A	31	0	14	1	0
2	B	31	0	14	0	0
3	A	42	0	26	3	0
3	B	21	0	13	1	0
4	A	2	0	0	0	0
4	B	2	0	0	0	0
5	A	4	0	6	0	0
5	B	4	0	6	0	0
6	B	1	0	0	0	0
7	A	220	0	0	4	0
7	B	134	0	0	2	0
All	All	3645	0	3365	14	0

The all-atom clashscore is defined as the number of clashes found per 1000 atoms (including hydrogen atoms). The all-atom clashscore for this structure is 2.

All (14) close contacts within the same asymmetric unit are listed below, sorted by their clash magnitude.

Atom-1	Atom-2	Interatomic distance (Å)	Clash overlap (Å)
3:A:202[A]:TMP:O3P	7:A:457:HOH:O	2.06	0.73
1:A:193:LEU:HD12	7:A:478:HOH:O	1.91	0.70
1:A:177[A]:GLU:CG	7:A:497:HOH:O	2.48	0.61
1:B:57:GLU:OE1	7:B:406:HOH:O	2.19	0.53
1:A:145:ARG:CZ	7:A:459:HOH:O	2.57	0.52
1:A:161:GLU:OE2	1:A:165:GLU:OE2	2.32	0.47
1:B:145:ARG:CZ	7:B:415:HOH:O	2.63	0.46
1:A:113:LEU:HD21	1:B:113:LEU:HD21	1.97	0.46
1:A:23:TYR:O	1:A:26[B]:GLN:HB2	2.16	0.45
1:A:98:TYR:CE2	3:A:202[A]:TMP:H2'1	2.53	0.43
1:A:64:PHE:CZ	3:A:202[B]:TMP:C2	3.08	0.41
1:B:71:LEU:HD12	1:B:75[A]:LYS:HG3	2.01	0.41
1:A:10:GLY:H	2:A:201:ACP:H3B1	1.86	0.41
1:B:64:PHE:CZ	3:B:202:TMP:C2	3.09	0.41

There are no symmetry-related clashes.

## 5.3 Torsion angles [i](#)

### 5.3.1 Protein backbone [i](#)

In the following table, the Percentiles column shows the percent Ramachandran outliers of the chain as a percentile score with respect to all X-ray entries followed by that with respect to entries of similar resolution.

The Analysed column shows the number of residues for which the backbone conformation was analysed, and the total number of residues.

Mol	Chain	Analysed	Favoured	Allowed	Outliers	Percentiles	
1	A	204/195 (105%)	197 (97%)	7 (3%)	0	100	100
1	B	196/195 (100%)	190 (97%)	6 (3%)	0	100	100
All	All	400/390 (103%)	387 (97%)	13 (3%)	0	100	100

There are no Ramachandran outliers to report.

### 5.3.2 Protein sidechains [i](#)

In the following table, the Percentiles column shows the percent sidechain outliers of the chain as a percentile score with respect to all X-ray entries followed by that with respect to entries of similar resolution.

The Analysed column shows the number of residues for which the sidechain conformation was analysed, and the total number of residues.

Mol	Chain	Analysed	Rotameric	Outliers	Percentiles	
1	A	172/172 (100%)	169 (98%)	3 (2%)	66	36
1	B	161/172 (94%)	161 (100%)	0	100	100
All	All	333/344 (97%)	330 (99%)	3 (1%)	89	66

All (3) residues with a non-rotameric sidechain are listed below:

Mol	Chain	Res	Type
1	A	60	GLU
1	A	148[A]	ASN
1	A	148[B]	ASN

Some sidechains can be flipped to improve hydrogen bonding and reduce clashes. There are no such sidechains identified.

### 5.3.3 RNA [i](#)

There are no RNA molecules in this entry.

## 5.4 Non-standard residues in protein, DNA, RNA chains [i](#)

There are no non-standard protein/DNA/RNA residues in this entry.

## 5.5 Carbohydrates [i](#)

There are no carbohydrates in this entry.

## 5.6 Ligand geometry [i](#)

Of 12 ligands modelled in this entry, 5 are monoatomic - leaving 7 for Mogul analysis.

In the following table, the Counts columns list the number of bonds (or angles) for which Mogul statistics could be retrieved, the number of bonds (or angles) that are observed in the model and the number of bonds (or angles) that are defined in the chemical component dictionary. The Link column lists molecule types, if any, to which the group is linked. The Z score for a bond length (or angle) is the number of standard deviations the observed value is removed from the expected value. A bond length (or angle) with  $|Z| > 2$  is considered an outlier worth inspection. RMSZ is the root-mean-square of all Z scores of the bond lengths (or angles).

Mol	Type	Chain	Res	Link	Bond lengths			Bond angles		
					Counts	RMSZ	# Z  > 2	Counts	RMSZ	# Z  > 2
2	ACP	A	201	4	27,33,33	1.59	5 (18%)	30,52,52	1.35	3 (10%)
3	TMP	A	202[A]	-	17,22,22	1.06	1 (5%)	24,33,33	2.99	6 (25%)
3	TMP	A	202[B]	-	17,22,22	0.73	0	24,33,33	3.10	6 (25%)
5	EDO	A	205	-	3,3,3	0.36	0	2,2,2	1.03	0
2	ACP	B	201	4	27,33,33	2.33	9 (33%)	30,52,52	1.79	8 (26%)
3	TMP	B	202	-	17,22,22	1.19	1 (5%)	24,33,33	2.88	8 (33%)
5	EDO	B	206	-	3,3,3	0.43	0	2,2,2	1.19	0

In the following table, the Chirals column lists the number of chiral outliers, the number of chiral centers analysed, the number of these observed in the model and the number defined in the chemical component dictionary. Similar counts are reported in the Torsion and Rings columns. '-' means no outliers of that kind were identified.

Mol	Type	Chain	Res	Link	Chirals	Torsions	Rings
2	ACP	A	201	4	-	0/15/38/38	0/3/3/3
3	TMP	A	202[A]	-	-	0/6/22/22	0/2/2/2
3	TMP	A	202[B]	-	-	0/6/22/22	0/2/2/2
5	EDO	A	205	-	-	0/1/1/1	0/0/0/0
2	ACP	B	201	4	-	0/15/38/38	0/3/3/3
3	TMP	B	202	-	-	0/6/22/22	0/2/2/2
5	EDO	B	206	-	-	0/1/1/1	0/0/0/0

All (16) bond length outliers are listed below:

Mol	Chain	Res	Type	Atoms	Z	Observed(Å)	Ideal(Å)
2	B	201	ACP	PB-O2B	-5.29	1.43	1.56
2	A	201	ACP	C2'-C3'	-3.47	1.44	1.53
2	B	201	ACP	C2'-C3'	-2.92	1.45	1.53
2	B	201	ACP	C2'-C1'	-2.69	1.49	1.53
2	B	201	ACP	O4'-C4'	-2.29	1.39	1.45
3	B	202	TMP	P-O2P	-2.23	1.45	1.54
3	A	202[A]	TMP	P-O5'	2.34	1.67	1.60
2	A	201	ACP	O3'-C3'	2.43	1.48	1.43
2	B	201	ACP	O3'-C3'	2.46	1.48	1.43
2	A	201	ACP	PG-O1G	2.57	1.55	1.50
2	B	201	ACP	O4'-C1'	3.09	1.45	1.41
2	A	201	ACP	C4-N3	3.19	1.40	1.35
2	B	201	ACP	C2-N3	3.69	1.38	1.32
2	B	201	ACP	PG-O3G	3.80	1.63	1.54
2	A	201	ACP	O4'-C1'	4.17	1.47	1.41
2	B	201	ACP	PB-O3A	5.48	1.64	1.58

All (31) bond angle outliers are listed below:

Mol	Chain	Res	Type	Atoms	Z	Observed(°)	Ideal(°)
3	A	202[A]	TMP	C5-C4-N3	-8.38	116.00	125.24
3	A	202[B]	TMP	C5-C4-N3	-7.49	116.98	125.24
3	A	202[B]	TMP	O2P-P-O5'	-6.29	90.00	106.73
3	B	202	TMP	C5-C4-N3	-5.12	119.59	125.24
2	A	201	ACP	C4-C5-N7	-4.19	105.36	109.41
3	B	202	TMP	O3P-P-O5'	-4.18	95.60	106.73
3	A	202[A]	TMP	O2P-P-O5'	-3.31	97.92	106.73
3	A	202[B]	TMP	O4'-C1'-N1	-3.26	102.28	107.78
3	A	202[A]	TMP	C5M-C5-C4	-3.15	116.53	120.17
2	B	201	ACP	C4-C5-N7	-2.78	106.72	109.41
3	B	202	TMP	O4'-C1'-C2'	-2.40	101.65	106.25
2	B	201	ACP	O3'-C3'-C2'	-2.39	104.17	111.83
2	B	201	ACP	C5-C6-N1	-2.06	113.48	119.70
2	A	201	ACP	O2'-C2'-C1'	-2.04	105.25	111.61
2	B	201	ACP	O3G-PG-O1G	-2.00	106.96	112.32
3	A	202[B]	TMP	C5M-C5-C6	2.05	122.76	118.67
3	B	202	TMP	C2'-C3'-C4'	2.12	107.25	102.73
3	A	202[A]	TMP	P-O5'-C5'	2.14	124.18	118.30
2	B	201	ACP	O2B-PB-O1B	2.14	117.26	110.09
2	B	201	ACP	C5-C6-N6	2.25	125.06	120.47
2	A	201	ACP	O2B-PB-O1B	2.64	118.92	110.09
3	A	202[A]	TMP	C5M-C5-C6	2.82	124.31	118.67
2	B	201	ACP	O2G-PG-C3B	2.83	113.26	106.40
3	B	202	TMP	C5-C6-N1	2.97	125.37	122.15
3	A	202[B]	TMP	O2P-P-O1P	3.07	122.50	110.50
3	B	202	TMP	O3P-P-O2P	3.38	121.25	107.61
3	B	202	TMP	C5M-C5-C6	3.75	126.16	118.67
2	B	201	ACP	N3-C2-N1	5.66	133.79	128.86
3	A	202[B]	TMP	C4-N3-C2	9.70	123.64	115.16
3	B	202	TMP	C4-N3-C2	9.89	123.81	115.16
3	A	202[A]	TMP	C4-N3-C2	9.99	123.89	115.16

There are no chirality outliers.

There are no torsion outliers.

There are no ring outliers.

4 monomers are involved in 5 short contacts:

Mol	Chain	Res	Type	Clashes	Symm-Clashes
2	A	201	ACP	1	0
3	A	202[A]	TMP	2	0

*Continued on next page...*

*Continued from previous page...*

Mol	Chain	Res	Type	Clashes	Symm-Clashes
3	A	202[B]	TMP	1	0
3	B	202	TMP	1	0

## 5.7 Other polymers [i](#)

There are no such residues in this entry.

## 5.8 Polymer linkage issues [i](#)

There are no chain breaks in this entry.

## 6 Fit of model and data [i](#)

### 6.1 Protein, DNA and RNA chains [i](#)

In the following table, the column labelled ‘#RSRZ > 2’ contains the number (and percentage) of RSRZ outliers, followed by percent RSRZ outliers for the chain as percentile scores relative to all X-ray entries and entries of similar resolution. The OWAB column contains the minimum, median, 95<sup>th</sup> percentile and maximum values of the occupancy-weighted average B-factor per residue. The column labelled ‘Q < 0.9’ lists the number of (and percentage) of residues with an average occupancy less than 0.9.

Mol	Chain	Analysed	<RSRZ>	#RSRZ>2	OWAB(Å <sup>2</sup> )	Q<0.9
1	A	195/195 (100%)	-0.35	1 (0%) 90 93	6, 11, 22, 32	0
1	B	194/195 (99%)	-0.06	3 (1%) 74 79	7, 15, 32, 42	0
All	All	389/390 (99%)	-0.20	4 (1%) 82 85	6, 13, 28, 42	0

All (4) RSRZ outliers are listed below:

Mol	Chain	Res	Type	RSRZ
1	B	191	GLY	3.4
1	B	141	LYS	2.5
1	B	26	GLN	2.3
1	A	52[A]	THR	2.2

### 6.2 Non-standard residues in protein, DNA, RNA chains [i](#)

There are no non-standard protein/DNA/RNA residues in this entry.

### 6.3 Carbohydrates [i](#)

There are no carbohydrates in this entry.

### 6.4 Ligands [i](#)

In the following table, the Atoms column lists the number of modelled atoms in the group and the number defined in the chemical component dictionary. LLDF column lists the quality of electron density of the group with respect to its neighbouring residues in protein, DNA or RNA chains. The B-factors column lists the minimum, median, 95<sup>th</sup> percentile and maximum values of B factors of atoms in the group. The column labelled ‘Q < 0.9’ lists the number of atoms with occupancy less than 0.9.

Mol	Type	Chain	Res	Atoms	RSCC	RSR	LLDF	B-factors( $\text{\AA}^2$ )	Q<0.9
5	EDO	B	206	4/4	0.74	0.25	4.43	37,41,44,46	0
3	TMP	A	202[A]	21/21	0.95	0.11	1.84	6,7,9,11	21
3	TMP	A	202[B]	21/21	0.95	0.11	1.82	5,7,20,21	21
3	TMP	B	202	21/21	0.96	0.08	-0.24	8,9,17,20	0
6	CL	B	205	1/1	0.99	0.07	-0.59	19,19,19,19	0
2	ACP	B	201	31/31	0.97	0.07	-0.65	9,15,21,25	0
2	ACP	A	201	31/31	0.99	0.05	-1.38	7,12,17,18	0
4	MG	B	204	1/1	0.98	0.04	-1.76	24,24,24,24	0
4	MG	A	204	1/1	0.99	0.03	-3.84	22,22,22,22	0
5	EDO	A	205	4/4	0.84	0.22	-	40,41,42,43	0
4	MG	A	203	1/1	1.00	0.04	-	8,8,8,8	0
4	MG	B	203	1/1	0.97	0.05	-	10,10,10,10	0

## 6.5 Other polymers [i](#)

There are no such residues in this entry.