



wwPDB X-ray Structure Validation Summary Report ⓘ

Oct 31, 2017 – 03:41 AM EDT

PDB ID : 3SDA
Title : Crystal structure of autoreactive-Valpha14-Vbeta6 NKT TCR in complex with CD1d-beta-galactosylceramide
Authors : Clarke, A.J.; Rossjohn, J.
Deposited on : unknown
Resolution : 2.80 Å(reported)

This is a wwPDB X-ray Structure Validation Summary Report for a publicly released PDB entry.

We welcome your comments at validation@mail.wwpdb.org

A user guide is available at

<http://wwpdb.org/validation/2016/XrayValidationReportHelp>

with specific help available everywhere you see the ⓘ symbol.

The following versions of software and data (see [references ⓘ](#)) were used in the production of this report:

MolProbity : 4.02b-467
Mogul : 1.7.2 (RC1), CSD as538be (2017)
Xtriage (Phenix) : 1.9-1692
EDS : rb-20030345
Percentile statistics : 20161228.v01 (using entries in the PDB archive December 28th 2016)
Refmac : 5.8.0135
CCP4 : 6.5.0
Ideal geometry (proteins) : Engh & Huber (2001)
Ideal geometry (DNA, RNA) : Parkinson et al. (1996)
Validation Pipeline (wwPDB-VP) : rb-20030345

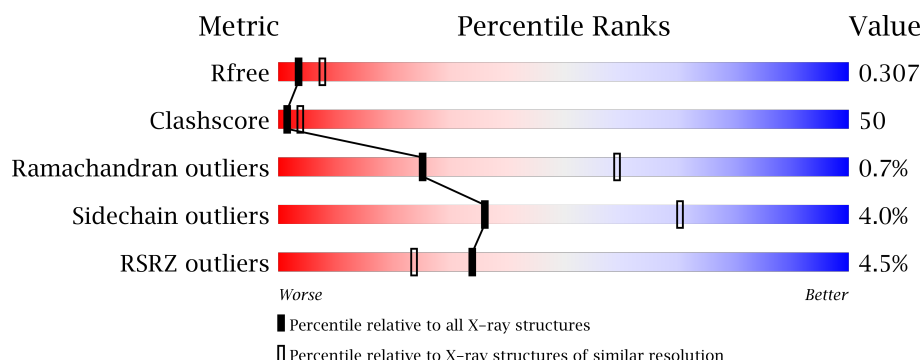
1 Overall quality at a glance

The following experimental techniques were used to determine the structure:

X-RAY DIFFRACTION

The reported resolution of this entry is 2.80 Å.

Percentile scores (ranging between 0-100) for global validation metrics of the entry are shown in the following graphic. The table shows the number of entries on which the scores are based.



Metric	Whole archive (#Entries)	Similar resolution (#Entries, resolution range(Å))
R_{free}	100719	2583 (2.80-2.80)
Clashscore	112137	3033 (2.80-2.80)
Ramachandran outliers	110173	2983 (2.80-2.80)
Sidechain outliers	110143	2985 (2.80-2.80)
RSRZ outliers	101464	2610 (2.80-2.80)

The table below summarises the geometric issues observed across the polymeric chains and their fit to the electron density. The red, orange, yellow and green segments on the lower bar indicate the fraction of residues that contain outliers for ≥ 3 , 2, 1 and 0 types of geometric quality criteria. A grey segment represents the fraction of residues that are not modelled. The numeric value for each fraction is indicated below the corresponding segment, with a dot representing fractions $\leq 5\%$. The upper red bar (where present) indicates the fraction of residues that have poor fit to the electron density. The numeric value is given above the bar.

Mol	Chain	Length	Quality of chain
1	A	302	<div> <div>0.1%</div> <div>54%</div> <div>40%</div> <div>0.1%</div> <div>0.1%</div> </div>
2	B	99	<div> <div>3%</div> <div>54%</div> <div>44%</div> <div>0.1%</div> <div>0.1%</div> </div>
3	C	207	<div> <div>8%</div> <div>43%</div> <div>47%</div> <div>5%</div> <div>5%</div> </div>
4	D	245	<div> <div>6%</div> <div>42%</div> <div>51%</div> <div>0.1%</div> <div>0.1%</div> </div>

The following table lists non-polymeric compounds, carbohydrate monomers and non-standard residues in protein, DNA, RNA chains that are outliers for geometric or electron-density-fit crite-

ria:

Mol	Type	Chain	Res	Chirality	Geometry	Clashes	Electron density
6	GXY	A	601	-	-	-	X

2 Entry composition

There are 8 unique types of molecules in this entry. The entry contains 6739 atoms, of which 0 are hydrogens and 0 are deuteriums.

In the tables below, the ZeroOcc column contains the number of atoms modelled with zero occupancy, the AltConf column contains the number of residues with at least one atom in alternate conformation and the Trace column contains the number of residues modelled with at most 2 atoms.

- Molecule 1 is a protein called Antigen-presenting glycoprotein CD1d1.

Mol	Chain	Residues	Atoms					ZeroOcc	AltConf	Trace
1	A	290	Total	C	N	O	S	10	0	0
			2333	1486	406	427	14			

There are 24 discrepancies between the modelled and reference sequences:

Chain	Residue	Modelled	Actual	Comment	Reference
A	201	HIS	ASP	SEE REMARK 999	UNP P11609
A	280	GLY	-	EXPRESSION TAG	UNP P11609
A	281	SER	-	EXPRESSION TAG	UNP P11609
A	282	LEU	-	EXPRESSION TAG	UNP P11609
A	283	HIS	-	EXPRESSION TAG	UNP P11609
A	284	HIS	-	EXPRESSION TAG	UNP P11609
A	285	ILE	-	EXPRESSION TAG	UNP P11609
A	286	LEU	-	EXPRESSION TAG	UNP P11609
A	287	ASP	-	EXPRESSION TAG	UNP P11609
A	288	ALA	-	EXPRESSION TAG	UNP P11609
A	289	GLN	-	EXPRESSION TAG	UNP P11609
A	290	LYS	-	EXPRESSION TAG	UNP P11609
A	291	MET	-	EXPRESSION TAG	UNP P11609
A	292	VAL	-	EXPRESSION TAG	UNP P11609
A	293	TRP	-	EXPRESSION TAG	UNP P11609
A	294	ASN	-	EXPRESSION TAG	UNP P11609
A	295	HIS	-	EXPRESSION TAG	UNP P11609
A	296	ARG	-	EXPRESSION TAG	UNP P11609
A	297	HIS	-	EXPRESSION TAG	UNP P11609
A	298	HIS	-	EXPRESSION TAG	UNP P11609
A	299	HIS	-	EXPRESSION TAG	UNP P11609
A	300	HIS	-	EXPRESSION TAG	UNP P11609
A	301	HIS	-	EXPRESSION TAG	UNP P11609
A	302	HIS	-	EXPRESSION TAG	UNP P11609

- Molecule 2 is a protein called Beta-2-microglobulin.

Mol	Chain	Residues	Atoms					ZeroOcc	AltConf	Trace
2	B	99	Total	C	N	O	S	3	0	0
			814	520	138	149	7			

There is a discrepancy between the modelled and reference sequences:

Chain	Residue	Modelled	Actual	Comment	Reference
B	85	ALA	ASP	SEE REMARK 999	UNP P01887

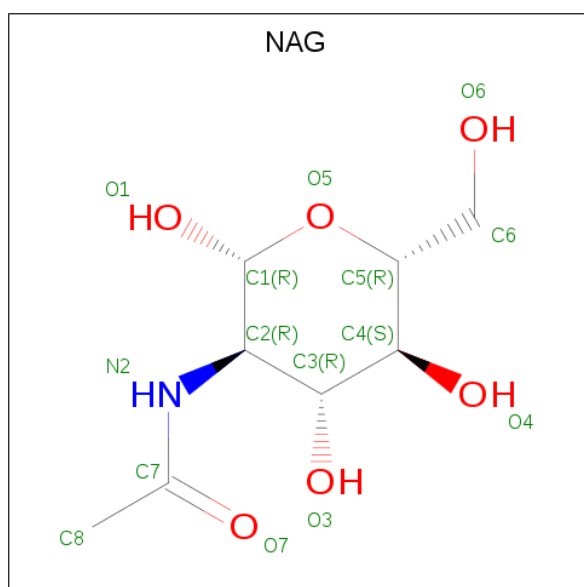
- Molecule 3 is a protein called NKT TCR Valpha14 chain.

Mol	Chain	Residues	Atoms					ZeroOcc	AltConf	Trace
3	C	196	Total	C	N	O	S	5	0	0
			1511	937	260	307	7			

- Molecule 4 is a protein called NKT TCR autoreactive-Vbeta6 chain.

Mol	Chain	Residues	Atoms					ZeroOcc	AltConf	Trace
4	D	239	Total	C	N	O	S	7	0	0
			1900	1202	326	365	7			

- Molecule 5 is N-ACETYL-D-GLUCOSAMINE (three-letter code: NAG) (formula: $C_8H_{15}NO_6$).



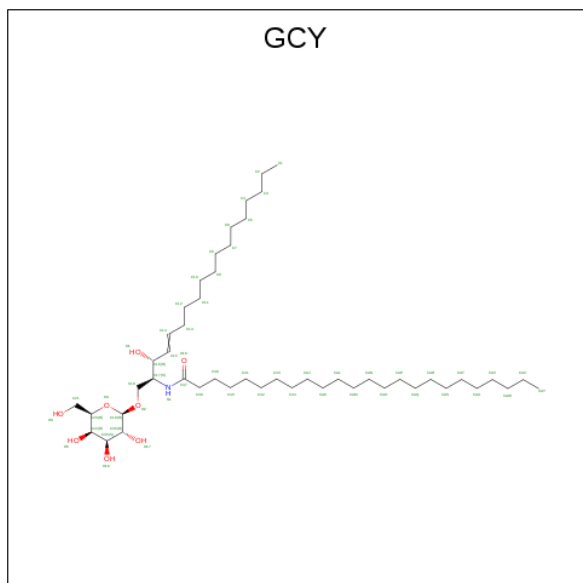
Mol	Chain	Residues	Atoms				ZeroOcc	AltConf
5	A	1	Total	C	N	O	0	0
			14	8	1	5		
5	A	1	Total	C	N	O	0	0
			14	8	1	5		

Continued on next page...

Continued from previous page...

Mol	Chain	Residues	Atoms				ZeroOcc	AltConf
5	A	1	Total	C	N	O	0	0
			14	8	1	5		
5	A	1	Total	C	N	O	0	0
			14	8	1	5		

- Molecule 6 is N-[(2S,3R)-1-(beta-D-galactopyranosyloxy)-3-hydroxyoctadec-4-en-2-yl]tetracosanamide (three-letter code: GCY) (formula: C₄₈H₉₃NO₈).



Mol	Chain	Residues	Atoms				ZeroOcc	AltConf
6	A	1	Total	C	N	O	0	0
			57	48	1	8		

- Molecule 7 is GLYCEROL (three-letter code: GOL) (formula: C₃H₈O₃).

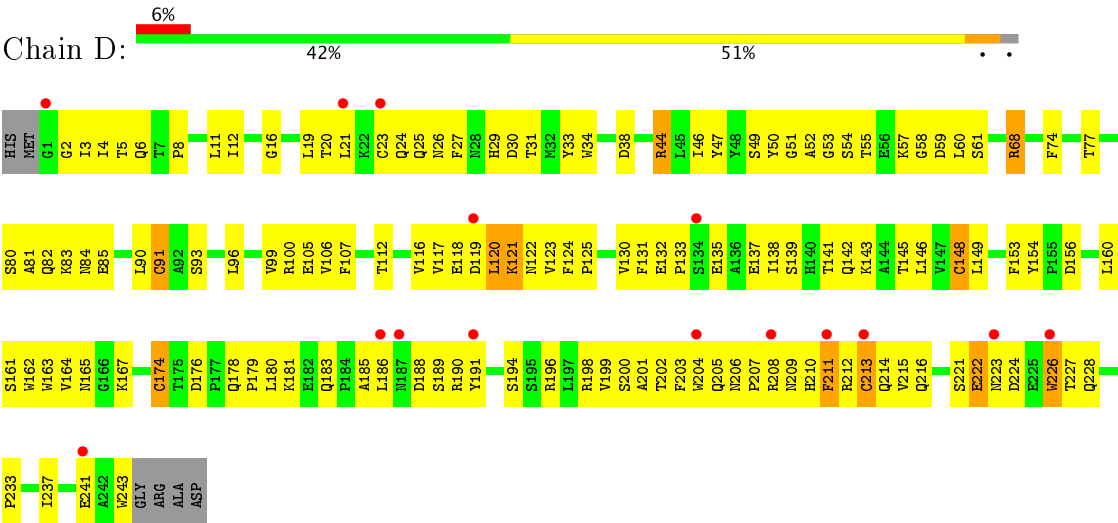


Mol	Chain	Residues	Atoms			ZeroOcc	AltConf
7	B	1	Total	C	O	0	0
			6	3	3		

- Molecule 8 is water.

Mol	Chain	Residues	Atoms		ZeroOcc	AltConf
8	A	19	Total	O	0	0
			19	19		
8	B	12	Total	O	0	0
			12	12		
8	C	16	Total	O	0	0
			16	16		
8	D	15	Total	O	0	0
			15	15		

● Molecule 4: NKT TCR autoreactive-Vbeta6 chain



4 Data and refinement statistics

Property	Value	Source
Space group	P 41 21 2	Depositor
Cell constants a, b, c, α , β , γ	94.75Å 94.75Å 287.52Å 90.00° 90.00° 90.00°	Depositor
Resolution (Å)	65.25 – 2.80 65.25 – 2.80	Depositor EDS
% Data completeness (in resolution range)	97.0 (65.25-2.80) 97.0 (65.25-2.80)	Depositor EDS
R_{merge}	0.18	Depositor
R_{sym}	0.18	Depositor
$\langle I/\sigma(I) \rangle$ ¹	1.67 (at 2.81Å)	Xtriage
Refinement program	REFMAC 5.5.0109	Depositor
R, R_{free}	0.272 , 0.312 0.272 , 0.307	Depositor DCC
R_{free} test set	1634 reflections (5.33%)	DCC
Wilson B-factor (Å ²)	64.9	Xtriage
Anisotropy	0.068	Xtriage
Bulk solvent k_{sol} (e/Å ³), B_{sol} (Å ²)	0.34 , 51.7	EDS
L-test for twinning ²	$\langle L \rangle = 0.46$, $\langle L^2 \rangle = 0.29$	Xtriage
Estimated twinning fraction	No twinning to report.	Xtriage
F_o, F_c correlation	0.89	EDS
Total number of atoms	6739	wwPDB-VP
Average B, all atoms (Å ²)	59.0	wwPDB-VP

Xtriage's analysis on translational NCS is as follows: *The largest off-origin peak in the Patterson function is 2.65% of the height of the origin peak. No significant pseudotranslation is detected.*

¹Intensities estimated from amplitudes.

²Theoretical values of $\langle |L| \rangle$, $\langle L^2 \rangle$ for acentric reflections are 0.5, 0.333 respectively for untwinned datasets, and 0.375, 0.2 for perfectly twinned datasets.

5 Model quality ⓘ

5.1 Standard geometry ⓘ

Bond lengths and bond angles in the following residue types are not validated in this section: GCY, GOL, NAG

The Z score for a bond length (or angle) is the number of standard deviations the observed value is removed from the expected value. A bond length (or angle) with $|Z| > 5$ is considered an outlier worth inspection. RMSZ is the root-mean-square of all Z scores of the bond lengths (or angles).

Mol	Chain	Bond lengths		Bond angles	
		RMSZ	$\# Z > 5$	RMSZ	$\# Z > 5$
1	A	1.51	2/2403 (0.1%)	0.72	0/3266
2	B	1.47	0/840	0.79	2/1140 (0.2%)
3	C	1.28	0/1536	0.78	1/2085 (0.0%)
4	D	1.26	2/1947 (0.1%)	0.75	1/2640 (0.0%)
All	All	1.39	4/6726 (0.1%)	0.75	4/9131 (0.0%)

All (4) bond length outliers are listed below:

Mol	Chain	Res	Type	Atoms	Z	Observed(Å)	Ideal(Å)
1	A	12	CYS	CB-SG	-6.61	1.71	1.82
1	A	124	TYR	CD2-CE2	-5.53	1.31	1.39
4	D	106	VAL	CB-CG2	-5.52	1.41	1.52
4	D	105	GLU	CD-OE1	-5.12	1.20	1.25

All (4) bond angle outliers are listed below:

Mol	Chain	Res	Type	Atoms	Z	Observed(°)	Ideal(°)
3	C	90	CYS	CA-CB-SG	7.63	127.74	114.00
4	D	91	CYS	CA-CB-SG	7.10	126.77	114.00
2	B	80	CYS	CA-CB-SG	7.08	126.75	114.00
2	B	25	CYS	CA-CB-SG	6.40	125.51	114.00

There are no chirality outliers.

There are no planarity outliers.

5.2 Too-close contacts ⓘ

In the following table, the Non-H and H(model) columns list the number of non-hydrogen atoms and hydrogen atoms in the chain respectively. The H(added) column lists the number of hydrogen

atoms added and optimized by MolProbity. The Clashes column lists the number of clashes within the asymmetric unit, whereas Symm-Clashes lists symmetry related clashes.

Mol	Chain	Non-H	H(model)	H(added)	Clashes	Symm-Clashes
1	A	2333	0	2233	147	1
2	B	814	0	790	73	0
3	C	1511	0	1464	187	0
4	D	1900	0	1829	280	0
5	A	56	0	51	0	0
6	A	57	0	88	9	0
7	B	6	0	8	1	0
8	A	19	0	0	1	0
8	B	12	0	0	0	0
8	C	16	0	0	0	0
8	D	15	0	0	2	0
All	All	6739	0	6463	651	1

The all-atom clashscore is defined as the number of clashes found per 1000 atoms (including hydrogen atoms). The all-atom clashscore for this structure is 50.

The worst 5 of 651 close contacts within the same asymmetric unit are listed below, sorted by their clash magnitude.

Atom-1	Atom-2	Interatomic distance (Å)	Clash overlap (Å)
3:C:140:LEU:CD1	3:C:178:ALA:O	1.67	1.43
4:D:8:PRO:HD2	4:D:21:LEU:CD2	1.49	1.42
2:B:25:CYS:SG	2:B:80:CYS:CB	2.11	1.39
1:A:89:SER:HB2	1:A:90:PRO:CD	1.45	1.38
3:C:130:ASP:CB	4:D:131:PHE:CD2	2.05	1.37

All (1) symmetry-related close contacts are listed below. The label for Atom-2 includes the symmetry operator and encoded unit-cell translations to be applied.

Atom-1	Atom-2	Interatomic distance (Å)	Clash overlap (Å)
1:A:89:SER:OG	1:A:283:HIS:NE2[6_424]	2.06	0.14

5.3 Torsion angles ⓘ

5.3.1 Protein backbone ⓘ

In the following table, the Percentiles column shows the percent Ramachandran outliers of the chain as a percentile score with respect to all X-ray entries followed by that with respect to entries of similar resolution.

The Analysed column shows the number of residues for which the backbone conformation was analysed, and the total number of residues.

Mol	Chain	Analysed	Favoured	Allowed	Outliers	Percentiles	
1	A	288/302 (95%)	284 (99%)	3 (1%)	1 (0%)	44	77
2	B	97/99 (98%)	95 (98%)	2 (2%)	0	100	100
3	C	192/207 (93%)	181 (94%)	9 (5%)	2 (1%)	18	50
4	D	237/245 (97%)	229 (97%)	5 (2%)	3 (1%)	14	41
All	All	814/853 (95%)	789 (97%)	19 (2%)	6 (1%)	25	59

5 of 6 Ramachandran outliers are listed below:

Mol	Chain	Res	Type
1	A	89	SER
3	C	195	ASN
3	C	202	THR
4	D	121	LYS
4	D	222	GLU

5.3.2 Protein sidechains ⓘ

In the following table, the Percentiles column shows the percent sidechain outliers of the chain as a percentile score with respect to all X-ray entries followed by that with respect to entries of similar resolution.

The Analysed column shows the number of residues for which the sidechain conformation was analysed, and the total number of residues.

Mol	Chain	Analysed	Rotameric	Outliers	Percentiles	
1	A	253/264 (96%)	245 (97%)	8 (3%)	44	78
2	B	92/93 (99%)	92 (100%)	0	100	100
3	C	174/186 (94%)	165 (95%)	9 (5%)	27	60
4	D	207/211 (98%)	195 (94%)	12 (6%)	23	55
All	All	726/754 (96%)	697 (96%)	29 (4%)	36	70

5 of 29 residues with a non-rotameric sidechain are listed below:

Mol	Chain	Res	Type
3	C	189	CYS
3	C	203	PHE
4	D	213	CYS

Continued on next page...

Continued from previous page...

Mol	Chain	Res	Type
3	C	198	ILE
4	D	19	LEU

Some sidechains can be flipped to improve hydrogen bonding and reduce clashes. 5 of 16 such sidechains are listed below:

Mol	Chain	Res	Type
1	A	295	HIS
2	B	29	GLN
3	C	30	ASN
1	A	283	HIS
3	C	149	ASN

5.3.3 RNA [i](#)

There are no RNA molecules in this entry.

5.4 Non-standard residues in protein, DNA, RNA chains [i](#)

There are no non-standard protein/DNA/RNA residues in this entry.

5.5 Carbohydrates [i](#)

There are no carbohydrates in this entry.

5.6 Ligand geometry [i](#)

6 ligands are modelled in this entry.

In the following table, the Counts columns list the number of bonds (or angles) for which Mogul statistics could be retrieved, the number of bonds (or angles) that are observed in the model and the number of bonds (or angles) that are defined in the Chemical Component Dictionary. The Link column lists molecule types, if any, to which the group is linked. The Z score for a bond length (or angle) is the number of standard deviations the observed value is removed from the expected value. A bond length (or angle) with $|Z| > 2$ is considered an outlier worth inspection. RMSZ is the root-mean-square of all Z scores of the bond lengths (or angles).

Mol	Type	Chain	Res	Link	Bond lengths			Bond angles		
					Counts	RMSZ	$\# Z > 2$	Counts	RMSZ	$\# Z > 2$
5	NAG	A	303	1	14,14,15	0.48	0	15,19,21	0.92	0

Mol	Type	Chain	Res	Link	Bond lengths			Bond angles		
					Counts	RMSZ	# Z > 2	Counts	RMSZ	# Z > 2
5	NAG	A	304	1	14,14,15	0.54	0	15,19,21	1.50	2 (13%)
5	NAG	A	305	1,5	14,14,15	0.63	0	15,19,21	1.34	2 (13%)
5	NAG	A	306	5	14,14,15	0.65	0	15,19,21	0.91	0
6	GCY	A	601	-	56,57,57	2.04	9 (16%)	61,65,65	1.46	10 (16%)
7	GOL	B	100	-	5,5,5	0.52	0	5,5,5	0.59	0

In the following table, the Chirals column lists the number of chiral outliers, the number of chiral centers analysed, the number of these observed in the model and the number defined in the Chemical Component Dictionary. Similar counts are reported in the Torsion and Rings columns. '-' means no outliers of that kind were identified.

Mol	Type	Chain	Res	Link	Chirals	Torsions	Rings
5	NAG	A	303	1	-	0/6/23/26	0/1/1/1
5	NAG	A	304	1	-	0/6/23/26	0/1/1/1
5	NAG	A	305	1,5	-	0/6/23/26	0/1/1/1
5	NAG	A	306	5	-	0/6/23/26	0/1/1/1
6	GCY	A	601	-	-	0/53/73/73	0/1/1/1
7	GOL	B	100	-	-	0/4/4/4	0/0/0/0

The worst 5 of 9 bond length outliers are listed below:

Mol	Chain	Res	Type	Atoms	Z	Observed(Å)	Ideal(Å)
6	A	601	GCY	O1-C16	-9.32	1.25	1.43
6	A	601	GCY	CAX-CAW	-6.68	1.04	1.51
6	A	601	GCY	C16-C15	-5.40	1.40	1.50
6	A	601	GCY	CAQ-CAP	-2.74	1.35	1.51
6	A	601	GCY	CAN-CAM	-2.47	1.37	1.51

The worst 5 of 14 bond angle outliers are listed below:

Mol	Chain	Res	Type	Atoms	Z	Observed(°)	Ideal(°)
5	A	304	NAG	O5-C1-C2	-4.00	105.90	111.47
6	A	601	GCY	C13-C14-C15	-3.85	110.35	125.66
5	A	305	NAG	O4-C4-C3	-3.14	103.53	110.36
6	A	601	GCY	C18-O2-C19	-3.06	107.49	113.76
5	A	304	NAG	C4-C3-C2	-2.44	107.44	111.02

There are no chirality outliers.

There are no torsion outliers.

There are no ring outliers.

2 monomers are involved in 10 short contacts:

Mol	Chain	Res	Type	Clashes	Symm-Clashes
6	A	601	GCY	9	0
7	B	100	GOL	1	0

5.7 Other polymers [i](#)

There are no such residues in this entry.

5.8 Polymer linkage issues [i](#)

There are no chain breaks in this entry.

6 Fit of model and data [i](#)

6.1 Protein, DNA and RNA chains [i](#)

In the following table, the column labelled ‘#RSRZ> 2’ contains the number (and percentage) of RSRZ outliers, followed by percent RSRZ outliers for the chain as percentile scores relative to all X-ray entries and entries of similar resolution. The OWAB column contains the minimum, median, 95th percentile and maximum values of the occupancy-weighted average B-factor per residue. The column labelled ‘Q< 0.9’ lists the number of (and percentage) of residues with an average occupancy less than 0.9.

Mol	Chain	Analysed	<RSRZ>	#RSRZ>2	OWAB(Å ²)	Q<0.9
1	A	290/302 (96%)	0.05	2 (0%) 87 83	39, 50, 63, 67	9 (3%)
2	B	99/99 (100%)	0.05	3 (3%) 51 39	42, 51, 60, 64	3 (3%)
3	C	196/207 (94%)	0.36	17 (8%) 11 6	38, 59, 114, 117	6 (3%)
4	D	239/245 (97%)	0.40	15 (6%) 21 13	38, 65, 85, 88	5 (2%)
All	All	824/853 (96%)	0.23	37 (4%) 34 24	38, 54, 99, 117	23 (2%)

The worst 5 of 37 RSRZ outliers are listed below:

Mol	Chain	Res	Type	RSRZ
3	C	196	SER	9.6
1	A	109	GLY	7.2
3	C	202	THR	5.6
3	C	195	ASN	4.7
4	D	186	LEU	4.3

6.2 Non-standard residues in protein, DNA, RNA chains [i](#)

There are no non-standard protein/DNA/RNA residues in this entry.

6.3 Carbohydrates [i](#)

There are no carbohydrates in this entry.

6.4 Ligands [i](#)

In the following table, the Atoms column lists the number of modelled atoms in the group and the number defined in the chemical component dictionary. LLDF column lists the quality of electron density of the group with respect to its neighbouring residues in protein, DNA or RNA chains. The B-factors column lists the minimum, median, 95th percentile and maximum values of B factors

of atoms in the group. The column labelled 'Q< 0.9' lists the number of atoms with occupancy less than 0.9.

Mol	Type	Chain	Res	Atoms	RSCC	RSR	LLDF	B-factors(\AA^2)	Q<0.9
6	GCY	A	601	57/57	0.84	0.37	3.40	30,58,68,69	0
5	NAG	A	304	14/15	0.73	0.30	1.35	64,66,67,68	0
7	GOL	B	100	6/6	0.82	0.20	0.93	68,69,69,69	0
5	NAG	A	303	14/15	0.72	0.26	-	75,76,76,77	0
5	NAG	A	306	14/15	0.79	0.33	-	44,47,48,48	0
5	NAG	A	305	14/15	0.94	0.15	-	46,48,49,51	0

6.5 Other polymers [i](#)

There are no such residues in this entry.