



Full wwPDB X-ray Structure Validation Report ⓘ

Feb 14, 2017 – 06:30 am GMT

PDB ID : 3SFY
Title : Cryptococcus neoformans protein farnesyltransferase in complex with FPT-II and ethylenediamine inhibitor 2
Authors : Hast, M.A.; Beese, L.S.
Deposited on : 2011-06-14
Resolution : 2.10 Å(reported)

This is a Full wwPDB X-ray Structure Validation Report for a publicly released PDB entry.

We welcome your comments at validation@mail.wwpdb.org

A user guide is available at

<http://wwpdb.org/validation/2016/XrayValidationReportHelp>

with specific help available everywhere you see the ⓘ symbol.

The following versions of software and data (see [references ⓘ](#)) were used in the production of this report:

MolProbity : 4.02b-467
Mogul : 1.7.2 (RC1), CSD as538be (2017)
Xtriage (Phenix) : 1.9-1692
EDS : trunk28620
Percentile statistics : 20161228.v01 (using entries in the PDB archive December 28th 2016)
Refmac : 5.8.0135
CCP4 : 6.5.0
Ideal geometry (proteins) : Engh & Huber (2001)
Ideal geometry (DNA, RNA) : Parkinson et al. (1996)
Validation Pipeline (wwPDB-VP) : recalc28949

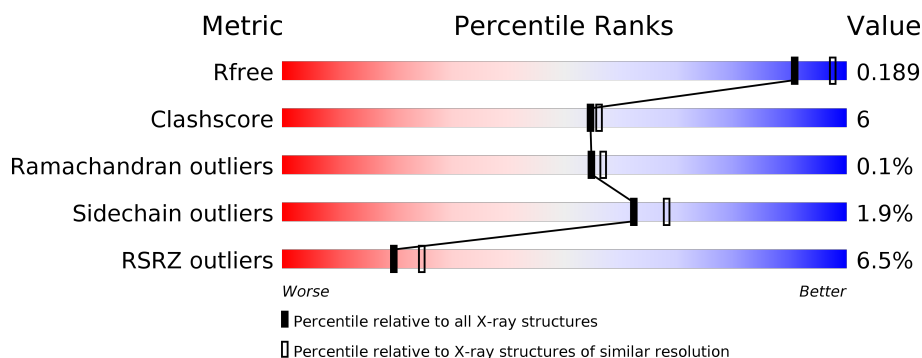
1 Overall quality at a glance

The following experimental techniques were used to determine the structure:

X-RAY DIFFRACTION

The reported resolution of this entry is 2.10 Å.

Percentile scores (ranging between 0-100) for global validation metrics of the entry are shown in the following graphic. The table shows the number of entries on which the scores are based.



Metric	Whole archive (#Entries)	Similar resolution (#Entries, resolution range(Å))
R_{free}	100719	4243 (2.10-2.10)
Clashscore	112137	4788 (2.10-2.10)
Ramachandran outliers	110173	4740 (2.10-2.10)
Sidechain outliers	110143	4741 (2.10-2.10)
RSRZ outliers	101464	4275 (2.10-2.10)

The table below summarises the geometric issues observed across the polymeric chains and their fit to the electron density. The red, orange, yellow and green segments on the lower bar indicate the fraction of residues that contain outliers for ≥ 3 , 2, 1 and 0 types of geometric quality criteria. A grey segment represents the fraction of residues that are not modelled. The numeric value for each fraction is indicated below the corresponding segment, with a dot representing fractions $\leq 5\%$. The upper red bar (where present) indicates the fraction of residues that have poor fit to the electron density. The numeric value is given above the bar.

Mol	Chain	Length	Quality of chain
1	A	349	<div> <div>8%</div> <div> <div></div> <div>84%</div> <div>6%</div> <div>10%</div> </div> </div>
2	B	520	<div> <div>5%</div> <div> <div></div> <div>81%</div> <div>11%</div> <div>7%</div> </div> </div>

The following table lists non-polymeric compounds, carbohydrate monomers and non-standard residues in protein, DNA, RNA chains that are outliers for geometric or electron-density-fit criteria:

Mol	Type	Chain	Res	Chirality	Geometry	Clashes	Electron density
4	3FX	B	523	-	-	-	X
4	3FX	B	524	-	-	-	X
6	FII	B	526	-	-	-	X

2 Entry composition

There are 8 unique types of molecules in this entry. The entry contains 7079 atoms, of which 0 are hydrogens and 0 are deuteriums.

In the tables below, the ZeroOcc column contains the number of atoms modelled with zero occupancy, the AltConf column contains the number of residues with at least one atom in alternate conformation and the Trace column contains the number of residues modelled with at most 2 atoms.

- Molecule 1 is a protein called *Cryptococcus neoformans* protein farnesyltransferase alpha subunit.

Mol	Chain	Residues	Atoms					ZeroOcc	AltConf	Trace
1	A	315	Total	C	N	O	S	0	0	0
			2621	1691	446	473	11			

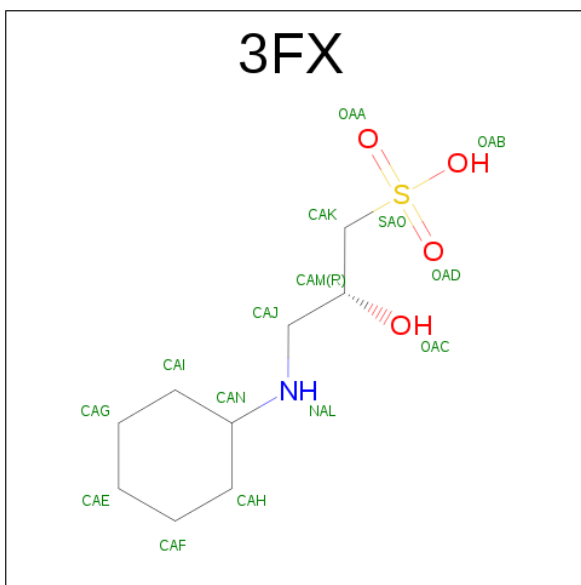
- Molecule 2 is a protein called *Cryptococcus neoformans* protein farnesyltransferase beta subunit.

Mol	Chain	Residues	Atoms					ZeroOcc	AltConf	Trace
2	B	482	Total	C	N	O	S	0	1	0
			3702	2345	646	696	15			

- Molecule 3 is ZINC ION (three-letter code: ZN) (formula: Zn).

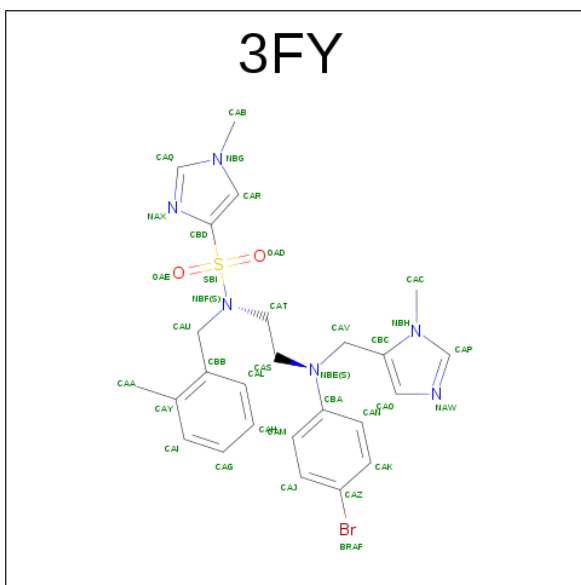
Mol	Chain	Residues	Atoms		ZeroOcc	AltConf
3	B	1	Total	Zn	0	0
			1	1		

- Molecule 4 is (2R)-3-(CYCLOHEXYLAMINO)-2-HYDROXYPROPANE-1-SULFONIC ACID (three-letter code: 3FX) (formula: C₉H₁₉NO₄S).



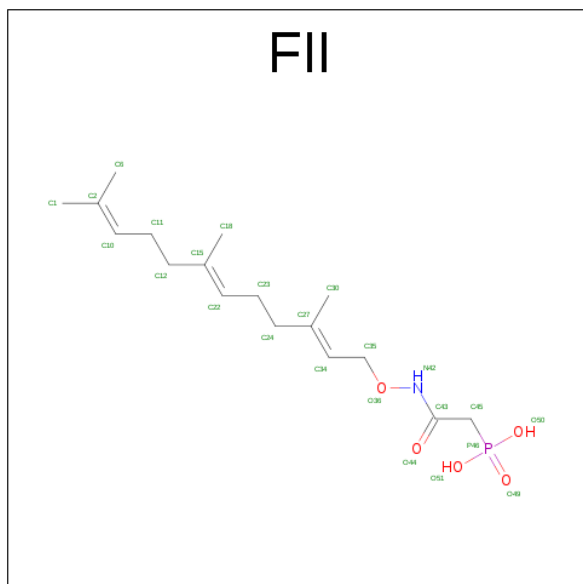
Mol	Chain	Residues	Atoms					ZeroOcc	AltConf
4	B	1	Total 15	C 9	N 1	O 4	S 1	0	0
4	B	1	Total 15	C 9	N 1	O 4	S 1	0	0
4	B	1	Total 15	C 9	N 1	O 4	S 1	0	0

- Molecule 5 is N-(2-{(4-BROMOPHENYL)[(1-METHYL-1H-IMIDAZOL-5-YL)METHYL]AMINO}ETHYL)-1-METHYL-N-(2-METHYLBENZYL)-1H-IMIDAZOLE-4-SULFONAMIDE (three-letter code: 3FY) (formula: $C_{25}H_{29}BrN_6O_2S$).



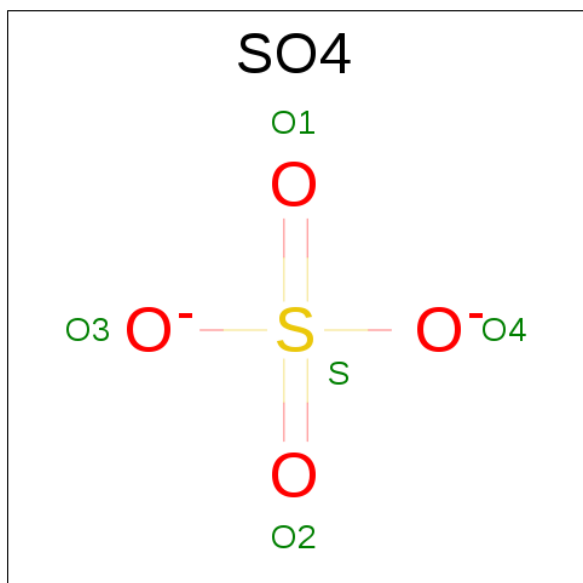
Mol	Chain	Residues	Atoms					ZeroOcc	AltConf
5	B	1	Total	Br	C	N	O	S	
			35	1	25	6	2	1	

- Molecule 6 is [(3,7,11-TRIMETHYL-DODECA-2,6,10-TRIENYLOXYCARBAMOYL)-METHYL]-PHOSPHONIC ACID (three-letter code: FII) (formula: C₁₇H₃₀NO₅P).



Mol	Chain	Residues	Atoms					ZeroOcc	AltConf
6	B	1	Total	C	N	O	P		
			24	17	1	5	1		

- Molecule 7 is SULFATE ION (three-letter code: SO4) (formula: O₄S).



Mol	Chain	Residues	Atoms			ZeroOcc	AltConf
7	B	1	Total	O	S	0	0
			5	4	1		

- Molecule 8 is water.

Mol	Chain	Residues	Atoms		ZeroOcc	AltConf
8	A	228	Total	O	0	0
			228	228		
8	B	418	Total	O	0	0
			418	418		

4 Data and refinement statistics

Property	Value	Source
Space group	P 43 21 2	Depositor
Cell constants a, b, c, α , β , γ	141.16Å 141.16Å 129.63Å 90.00° 90.00° 90.00°	Depositor
Resolution (Å)	46.57 – 2.10 49.91 – 2.05	Depositor EDS
% Data completeness (in resolution range)	99.9 (46.57-2.10) 99.9 (49.91-2.05)	Depositor EDS
R_{merge}	(Not available)	Depositor
R_{sym}	(Not available)	Depositor
$\langle I/\sigma(I) \rangle$ ¹	3.55 (at 2.05Å)	Xtriage
Refinement program	REFMAC 5.5.0109	Depositor
R, R_{free}	0.178 , 0.203 0.188 , 0.189	Depositor DCC
R_{free} test set	3834 reflections (5.26%)	DCC
Wilson B-factor (Å ²)	27.0	Xtriage
Anisotropy	0.468	Xtriage
Bulk solvent k_{sol} (e/Å ³), B_{sol} (Å ²)	0.34 , 39.3	EDS
L-test for twinning ²	$\langle L \rangle = 0.47$, $\langle L^2 \rangle = 0.30$	Xtriage
Estimated twinning fraction	No twinning to report.	Xtriage
F_o, F_c correlation	0.95	EDS
Total number of atoms	7079	wwPDB-VP
Average B, all atoms (Å ²)	36.0	wwPDB-VP

Xtriage's analysis on translational NCS is as follows: *The largest off-origin peak in the Patterson function is 3.45% of the height of the origin peak. No significant pseudotranslation is detected.*

¹Intensities estimated from amplitudes.

²Theoretical values of $\langle |L| \rangle$, $\langle L^2 \rangle$ for acentric reflections are 0.5, 0.333 respectively for untwinned datasets, and 0.375, 0.2 for perfectly twinned datasets.

5 Model quality [i](#)

5.1 Standard geometry [i](#)

Bond lengths and bond angles in the following residue types are not validated in this section: ZN, FII, SO4, 3FX, 3FY

The Z score for a bond length (or angle) is the number of standard deviations the observed value is removed from the expected value. A bond length (or angle) with $|Z| > 5$ is considered an outlier worth inspection. RMSZ is the root-mean-square of all Z scores of the bond lengths (or angles).

Mol	Chain	Bond lengths		Bond angles	
		RMSZ	$\# Z > 5$	RMSZ	$\# Z > 5$
1	A	0.52	0/2703	0.56	0/3680
2	B	0.59	0/3796	0.63	2/5155 (0.0%)
All	All	0.56	0/6499	0.60	2/8835 (0.0%)

There are no bond length outliers.

All (2) bond angle outliers are listed below:

Mol	Chain	Res	Type	Atoms	Z	Observed(°)	Ideal(°)
2	B	315	ARG	NE-CZ-NH2	-9.65	115.47	120.30
2	B	315	ARG	NE-CZ-NH1	8.00	124.30	120.30

There are no chirality outliers.

There are no planarity outliers.

5.2 Too-close contacts [i](#)

In the following table, the Non-H and H(model) columns list the number of non-hydrogen atoms and hydrogen atoms in the chain respectively. The H(added) column lists the number of hydrogen atoms added and optimized by MolProbity. The Clashes column lists the number of clashes within the asymmetric unit, whereas Symm-Clashes lists symmetry related clashes.

Mol	Chain	Non-H	H(model)	H(added)	Clashes	Symm-Clashes
1	A	2621	0	2544	19	0
2	B	3702	0	3633	59	0
3	B	1	0	0	0	0
4	B	45	0	57	3	0
5	B	35	0	29	4	0
6	B	24	0	28	5	0
7	B	5	0	0	1	0

Continued on next page...

Continued from previous page...

Mol	Chain	Non-H	H(model)	H(added)	Clashes	Symm-Clashes
8	A	228	0	0	3	0
8	B	418	0	0	16	0
All	All	7079	0	6291	76	0

The all-atom clashscore is defined as the number of clashes found per 1000 atoms (including hydrogen atoms). The all-atom clashscore for this structure is 6.

All (76) close contacts within the same asymmetric unit are listed below, sorted by their clash magnitude.

Atom-1	Atom-2	Interatomic distance (Å)	Clash overlap (Å)
1:A:28:ASN:HB3	8:B:2794:HOH:O	1.56	1.03
2:B:258:CYS:HB2	8:B:2540:HOH:O	1.63	0.97
2:B:496:THR:HG23	8:B:2053:HOH:O	1.70	0.92
2:B:440:ASP:H	2:B:518:GLN:HE22	1.10	0.90
2:B:228:GLN:HE22	2:B:293:ASP:H	1.19	0.89
2:B:464:GLN:HE22	2:B:467:ARG:HH11	1.15	0.88
2:B:62:ARG:H	2:B:389:GLN:HE22	1.27	0.82
2:B:170:GLN:HE22	2:B:449:LYS:H	1.22	0.82
1:A:143:LYS:HD3	2:B:320:LYS:HD3	1.61	0.80
1:A:109:TYR:HA	8:A:2596:HOH:O	1.81	0.79
2:B:305:GLN:HE22	2:B:376:ASN:H	1.33	0.77
2:B:255:GLU:HA	8:B:2757:HOH:O	1.86	0.74
2:B:266:HIS:HD2	2:B:268:GLY:H	1.37	0.73
2:B:440:ASP:H	2:B:518:GLN:NE2	1.85	0.72
2:B:66:HIS:HD1	2:B:397:GLY:H	1.39	0.70
2:B:170:GLN:NE2	2:B:449:LYS:H	1.93	0.67
1:A:148:TRP:O	1:A:152:HIS:HD2	1.78	0.66
1:A:226:HIS:H	2:B:20:ASN:HD21	1.42	0.66
2:B:496:THR:HG21	8:B:2600:HOH:O	1.97	0.63
1:A:143:LYS:CD	2:B:320:LYS:HD3	2.30	0.61
4:B:522:3FX:HAJA	8:B:1900:HOH:O	2.03	0.58
1:A:28:ASN:HA	8:B:2137:HOH:O	2.04	0.57
2:B:180:LYS:HE2	2:B:215:GLU:O	2.04	0.57
2:B:266:HIS:CD2	2:B:268:GLY:H	2.21	0.57
1:A:156:SER:O	1:A:160:THR:HG23	2.05	0.57
2:B:22:ARG:HB2	8:B:2748:HOH:O	2.06	0.55
2:B:468:ARG:HD2	8:B:2150:HOH:O	2.05	0.55
2:B:57:ARG:HD2	8:B:1608:HOH:O	2.08	0.53
2:B:266:HIS:HE1	6:B:526:FII:O49	1.91	0.53
2:B:62:ARG:H	2:B:389:GLN:NE2	2.02	0.53
2:B:271:SER:HB2	2:B:329:TRP:O	2.09	0.53

Continued on next page...

Continued from previous page...

Atom-1	Atom-2	Interatomic distance (Å)	Clash overlap (Å)
2:B:381:GLN:HE22	2:B:487:VAL:H	1.55	0.52
2:B:64:GLN:HB2	4:B:523:3FX:HAK	1.92	0.52
2:B:170:GLN:HE22	2:B:449:LYS:N	2.00	0.52
2:B:86:ALA:HA	2:B:136:GLN:HE22	1.74	0.52
1:A:249:LEU:HG	1:A:253:LEU:HD13	1.92	0.52
2:B:305:GLN:HE22	2:B:376:ASN:N	2.05	0.51
2:B:464:GLN:HE22	2:B:467:ARG:NH1	1.97	0.50
1:A:226:HIS:H	2:B:20:ASN:ND2	2.08	0.50
2:B:440:ASP:N	2:B:518:GLN:HE22	1.93	0.50
2:B:139:HIS:CE1	2:B:188:VAL:HB	2.46	0.49
2:B:139:HIS:HB3	2:B:142:PRO:HG2	1.93	0.49
1:A:152:HIS:HE1	8:A:1787:HOH:O	1.96	0.48
2:B:317:ARG:HG3	2:B:320:LYS:HG3	1.96	0.48
2:B:320:LYS:HE3	6:B:526:FII:O50	2.14	0.47
2:B:258:CYS:CB	8:B:2540:HOH:O	2.39	0.47
2:B:305:GLN:NE2	2:B:376:ASN:H	2.07	0.47
2:B:328:TRP:CZ2	2:B:502:ASN:HB2	2.49	0.47
2:B:255:GLU:CA	8:B:2757:HOH:O	2.55	0.47
2:B:142:PRO:HD3	7:B:527:SO4:O2	2.15	0.47
1:A:109:TYR:CE2	5:B:525:3FY:HAR	2.51	0.46
5:B:525:3FY:HAAB	8:B:2916:HOH:O	2.16	0.46
1:A:27:PRO:HA	8:A:2714:HOH:O	2.14	0.46
2:B:426:SER:OG	2:B:480:GLU:OE1	2.30	0.46
2:B:324:GLY:HA3	2:B:414:ASN:HD21	1.82	0.45
2:B:377:ARG:NH1	2:B:424:LYS:HD2	2.31	0.45
2:B:269:TYR:CE2	6:B:526:FII:H302	2.52	0.45
1:A:55:LYS:HD3	1:A:83:LEU:HD23	1.98	0.44
2:B:381:GLN:NE2	2:B:487:VAL:H	2.14	0.44
2:B:409:TYR:CE2	5:B:525:3FY:HAO	2.53	0.44
2:B:310:GLU:OE1	2:B:315:ARG:NH2	2.43	0.43
6:B:526:FII:H111	6:B:526:FII:H221	1.67	0.43
2:B:491:ASP:OD2	4:B:522:3FX:NAL	2.52	0.43
2:B:496:THR:HG23	2:B:496:THR:O	2.18	0.43
2:B:518:GLN:O	2:B:519:GLU:C	2.57	0.43
1:A:55:LYS:HA	1:A:83:LEU:CD2	2.49	0.43
2:B:139:HIS:HB3	2:B:142:PRO:CG	2.48	0.42
2:B:255:GLU:HB3	8:B:2569:HOH:O	2.19	0.42
6:B:526:FII:H181	6:B:526:FII:H232	1.80	0.42
1:A:160:THR:HG22	2:B:241:PHE:HD2	1.84	0.42
2:B:242:PRO:C	8:B:2634:HOH:O	2.58	0.42
1:A:109:TYR:CD2	5:B:525:3FY:HAR	2.55	0.42

Continued on next page...

Continued from previous page...

Atom-1	Atom-2	Interatomic distance (Å)	Clash overlap (Å)
2:B:81:PHE:HZ	8:B:2746:HOH:O	2.03	0.41
1:A:66:ILE:HG21	1:A:76:VAL:HG21	2.02	0.41
2:B:217:LEU:HD12	2:B:283:VAL:HG11	2.03	0.40
1:A:25:ASP:HB3	2:B:132:PRO:HG3	2.04	0.40

There are no symmetry-related clashes.

5.3 Torsion angles [i](#)

5.3.1 Protein backbone [i](#)

In the following table, the Percentiles column shows the percent Ramachandran outliers of the chain as a percentile score with respect to all X-ray entries followed by that with respect to entries of similar resolution.

The Analysed column shows the number of residues for which the backbone conformation was analysed, and the total number of residues.

Mol	Chain	Analysed	Favoured	Allowed	Outliers	Percentiles	
1	A	309/349 (88%)	298 (96%)	11 (4%)	0	100	100
2	B	475/520 (91%)	466 (98%)	8 (2%)	1 (0%)	51	52
All	All	784/869 (90%)	764 (97%)	19 (2%)	1 (0%)	55	57

All (1) Ramachandran outliers are listed below:

Mol	Chain	Res	Type
2	B	51	VAL

5.3.2 Protein sidechains [i](#)

In the following table, the Percentiles column shows the percent sidechain outliers of the chain as a percentile score with respect to all X-ray entries followed by that with respect to entries of similar resolution.

The Analysed column shows the number of residues for which the sidechain conformation was analysed, and the total number of residues.

Mol	Chain	Analysed	Rotameric	Outliers	Percentiles	
1	A	285/316 (90%)	277 (97%)	8 (3%)	49	52

Continued on next page...

Continued from previous page...

Mol	Chain	Analysed	Rotameric	Outliers	Percentiles	
2	B	401/436 (92%)	396 (99%)	5 (1%)	75	81
All	All	686/752 (91%)	673 (98%)	13 (2%)	62	68

All (13) residues with a non-rotameric sidechain are listed below:

Mol	Chain	Res	Type
1	A	5	THR
1	A	28	ASN
1	A	204	GLU
1	A	205	THR
1	A	209	SER
1	A	214	LEU
1	A	279	LEU
1	A	332	GLU
2	B	22	ARG
2	B	258	CYS
2	B	371	ILE
2	B	424	LYS
2	B	443	LYS

Some sidechains can be flipped to improve hydrogen bonding and reduce clashes. All (23) such sidechains are listed below:

Mol	Chain	Res	Type
1	A	23	GLN
1	A	73	HIS
1	A	104	GLN
1	A	105	ASN
1	A	110	GLN
1	A	152	HIS
1	A	187	ASN
2	B	20	ASN
2	B	108	GLN
2	B	136	GLN
2	B	170	GLN
2	B	219	ASN
2	B	228	GLN
2	B	266	HIS
2	B	304	GLN
2	B	305	GLN
2	B	319	ASN
2	B	381	GLN

Continued on next page...

Continued from previous page...

Mol	Chain	Res	Type
2	B	389	GLN
2	B	414	ASN
2	B	464	GLN
2	B	495	ASN
2	B	518	GLN

5.3.3 RNA [i](#)

There are no RNA molecules in this entry.

5.4 Non-standard residues in protein, DNA, RNA chains [i](#)

There are no non-standard protein/DNA/RNA residues in this entry.

5.5 Carbohydrates [i](#)

There are no carbohydrates in this entry.

5.6 Ligand geometry [i](#)

Of 7 ligands modelled in this entry, 1 is monoatomic - leaving 6 for Mogul analysis.

In the following table, the Counts columns list the number of bonds (or angles) for which Mogul statistics could be retrieved, the number of bonds (or angles) that are observed in the model and the number of bonds (or angles) that are defined in the chemical component dictionary. The Link column lists molecule types, if any, to which the group is linked. The Z score for a bond length (or angle) is the number of standard deviations the observed value is removed from the expected value. A bond length (or angle) with $|Z| > 2$ is considered an outlier worth inspection. RMSZ is the root-mean-square of all Z scores of the bond lengths (or angles).

Mol	Type	Chain	Res	Link	Bond lengths			Bond angles		
					Counts	RMSZ	$\# Z > 2$	Counts	RMSZ	$\# Z > 2$
4	3FX	B	522	-	14,15,15	0.87	0	16,20,20	1.56	2 (12%)
4	3FX	B	523	-	14,15,15	1.04	0	16,20,20	1.42	2 (12%)
4	3FX	B	524	-	14,15,15	1.03	0	16,20,20	1.69	2 (12%)
5	3FY	B	525	3	33,38,38	1.70	5 (15%)	42,54,54	1.90	8 (19%)
6	FII	B	526	-	23,23,23	2.19	9 (39%)	24,29,29	1.36	5 (20%)
7	SO4	B	527	-	4,4,4	0.24	0	6,6,6	0.40	0

In the following table, the Chirals column lists the number of chiral outliers, the number of chiral centers analysed, the number of these observed in the model and the number defined in the chemical component dictionary. Similar counts are reported in the Torsion and Rings columns. '-' means no outliers of that kind were identified.

Mol	Type	Chain	Res	Link	Chirals	Torsions	Rings
4	3FX	B	522	-	-	0/10/18/18	0/1/1/1
4	3FX	B	523	-	-	0/10/18/18	0/1/1/1
4	3FX	B	524	-	-	0/10/18/18	0/1/1/1
5	3FY	B	525	3	-	0/23/29/29	0/4/4/4
6	FII	B	526	-	-	0/23/24/24	0/0/0/0
7	SO4	B	527	-	-	0/0/0/0	0/0/0/0

All (14) bond length outliers are listed below:

Mol	Chain	Res	Type	Atoms	Z	Observed(Å)	Ideal(Å)
6	B	526	FII	C23-C22	-3.22	1.39	1.50
6	B	526	FII	C11-C10	-3.20	1.39	1.50
6	B	526	FII	C35-C34	-3.11	1.39	1.49
5	B	525	3FY	CAR-NBG	-2.86	1.33	1.38
6	B	526	FII	P46-O51	-2.73	1.48	1.54
5	B	525	3FY	CBC-NBH	-2.12	1.33	1.38
5	B	525	3FY	CAC-NBH	2.01	1.51	1.47
6	B	526	FII	C10-C2	2.43	1.39	1.32
6	B	526	FII	C22-C15	2.56	1.39	1.33
6	B	526	FII	C34-C27	2.58	1.39	1.33
6	B	526	FII	P46-O50	3.17	1.62	1.54
5	B	525	3FY	OAD-SBI	5.28	1.50	1.43
6	B	526	FII	P46-O49	5.60	1.62	1.50
5	B	525	3FY	OAE-SBI	5.69	1.50	1.43

All (19) bond angle outliers are listed below:

Mol	Chain	Res	Type	Atoms	Z	Observed(°)	Ideal(°)
5	B	525	3FY	OAE-SBI-OAD	-6.82	107.99	119.46
5	B	525	3FY	CAU-NBF-SBI	-4.25	107.28	117.35
5	B	525	3FY	CAS-CAT-NBF	-3.75	106.09	112.44
5	B	525	3FY	CAT-NBF-SBI	-3.40	110.74	117.92
5	B	525	3FY	CAU-NBF-CAT	-2.95	111.72	116.96
6	B	526	FII	O50-P46-O49	-2.61	105.32	112.32
6	B	526	FII	O49-P46-C45	-2.36	105.35	110.97
5	B	525	3FY	CAK-CAZ-CAJ	-2.03	117.89	121.34
6	B	526	FII	C6-C2-C1	2.32	120.02	114.60
5	B	525	3FY	OAE-SBI-NBF	2.44	109.00	106.69

Continued on next page...

Continued from previous page...

Mol	Chain	Res	Type	Atoms	Z	Observed(°)	Ideal(°)
5	B	525	3FY	OAD-SBI-NBF	2.63	109.17	106.69
6	B	526	FII	C18-C15-C12	2.71	119.98	115.29
6	B	526	FII	C30-C27-C24	2.72	120.01	115.29
4	B	522	3FX	OAA-SAO-CAK	2.74	109.17	106.83
4	B	523	3FX	OAA-SAO-CAK	2.82	109.23	106.83
4	B	524	3FX	OAA-SAO-CAK	3.86	110.13	106.83
4	B	522	3FX	OAB-SAO-CAK	4.01	110.91	106.01
4	B	523	3FX	OAB-SAO-CAK	4.32	111.29	106.01
4	B	524	3FX	OAD-SAO-CAK	4.77	110.91	106.83

There are no chirality outliers.

There are no torsion outliers.

There are no ring outliers.

5 monomers are involved in 13 short contacts:

Mol	Chain	Res	Type	Clashes	Symm-Clashes
4	B	522	3FX	2	0
4	B	523	3FX	1	0
5	B	525	3FY	4	0
6	B	526	FII	5	0
7	B	527	SO4	1	0

5.7 Other polymers [i](#)

There are no such residues in this entry.

5.8 Polymer linkage issues [i](#)

There are no chain breaks in this entry.

6 Fit of model and data

6.1 Protein, DNA and RNA chains

In the following table, the column labelled ‘#RSRZ > 2’ contains the number (and percentage) of RSRZ outliers, followed by percent RSRZ outliers for the chain as percentile scores relative to all X-ray entries and entries of similar resolution. The OWAB column contains the minimum, median, 95th percentile and maximum values of the occupancy-weighted average B-factor per residue. The column labelled ‘Q < 0.9’ lists the number of (and percentage) of residues with an average occupancy less than 0.9.

Mol	Chain	Analysed	<RSRZ>	#RSRZ>2	OWAB(Å ²)	Q<0.9
1	A	315/349 (90%)	0.23	28 (8%) 10 13	24, 39, 62, 73	0
2	B	482/520 (92%)	0.20	24 (4%) 30 36	21, 30, 51, 82	0
All	All	797/869 (91%)	0.21	52 (6%) 20 25	21, 34, 59, 82	0

All (52) RSRZ outliers are listed below:

Mol	Chain	Res	Type	RSRZ
1	A	5	THR	6.5
2	B	349	VAL	6.4
1	A	103	VAL	5.3
2	B	51	VAL	5.1
1	A	334	ALA	5.0
2	B	348	LYS	4.1
2	B	2	ALA	4.0
1	A	13	ARG	3.7
1	A	208	ARG	3.7
2	B	453	PRO	3.6
1	A	139	LEU	3.6
2	B	347	ARG	3.5
1	A	207	SER	3.4
2	B	371	ILE	3.4
2	B	255	GLU	3.3
1	A	278	PRO	3.2
1	A	28	ASN	3.0
2	B	481	GLU	3.0
1	A	100	GLU	3.0
1	A	7	ILE	2.8
1	A	272	PHE	2.8
1	A	109	TYR	2.8
1	A	302	ASN	2.7
2	B	330	VAL	2.7

Continued on next page...

Continued from previous page...

Mol	Chain	Res	Type	RSRZ
2	B	196	VAL	2.6
1	A	105	ASN	2.6
1	A	257	ALA	2.5
1	A	6	TYR	2.5
1	A	333	CYS	2.5
1	A	211	GLN	2.4
2	B	236	CYS	2.4
2	B	272	CYS	2.4
2	B	519	GLU	2.4
2	B	270	THR	2.4
1	A	104	GLN	2.3
2	B	52	SER	2.3
2	B	22	ARG	2.3
2	B	265	ALA	2.3
1	A	107	LYS	2.3
1	A	108	SER	2.3
2	B	50	LEU	2.3
1	A	27	PRO	2.3
2	B	76	GLN	2.2
2	B	301	THR	2.2
2	B	269	TYR	2.2
1	A	11	GLN	2.1
1	A	34	MET	2.1
1	A	145	TYR	2.1
1	A	253	LEU	2.1
2	B	4	GLU	2.1
2	B	345	LYS	2.1
1	A	204	GLU	2.0

6.2 Non-standard residues in protein, DNA, RNA chains [i](#)

There are no non-standard protein/DNA/RNA residues in this entry.

6.3 Carbohydrates [i](#)

There are no carbohydrates in this entry.

6.4 Ligands [i](#)

In the following table, the Atoms column lists the number of modelled atoms in the group and the number defined in the chemical component dictionary. LLDF column lists the quality of electron

density of the group with respect to its neighbouring residues in protein, DNA or RNA chains. The B-factors column lists the minimum, median, 95th percentile and maximum values of B factors of atoms in the group. The column labelled 'Q < 0.9' lists the number of atoms with occupancy less than 0.9.

Mol	Type	Chain	Res	Atoms	RSCC	RSR	LLDF	B-factors(Å ²)	Q<0.9
4	3FX	B	523	15/15	0.96	0.22	7.57	40,52,58,58	0
4	3FX	B	524	15/15	0.79	0.22	4.78	55,62,72,72	0
6	FII	B	526	24/24	0.91	0.26	2.08	28,33,35,38	0
5	3FY	B	525	35/35	0.92	0.26	1.38	37,54,62,62	35
4	3FX	B	522	15/15	0.98	0.12	1.02	28,29,32,33	0
7	SO4	B	527	5/5	0.93	0.18	0.63	51,53,56,56	0
3	ZN	B	521	1/1	0.99	0.12	-	28,28,28,28	0

6.5 Other polymers

There are no such residues in this entry.