



Full wwPDB X-ray Structure Validation Report ⓘ

Feb 14, 2017 – 04:53 am GMT

PDB ID : 2SKC
Title : PYRIDOXAL PHOSPHORYLASE B IN COMPLEX WITH FLUOROPHOSPHATE, GLUCOSE AND INOSINE-5'-MONOPHOSPHATE
Authors : Oikonomakos, N.G.; Zographos, S.E.; Tsitsanou, K.E.; Johnson, L.N.; Acharya, K.R.
Deposited on : 1998-12-11
Resolution : 2.40 Å(reported)

This is a Full wwPDB X-ray Structure Validation Report for a publicly released PDB entry.

We welcome your comments at validation@mail.wwpdb.org

A user guide is available at

<http://wwpdb.org/validation/2016/XrayValidationReportHelp>

with specific help available everywhere you see the ⓘ symbol.

The following versions of software and data (see [references ⓘ](#)) were used in the production of this report:

MolProbity	:	4.02b-467
Mogul	:	1.7.2 (RC1), CSD as538be (2017)
Xtriage (Phenix)	:	NOT EXECUTED
EDS	:	NOT EXECUTED
Percentile statistics	:	20161228.v01 (using entries in the PDB archive December 28th 2016)
Ideal geometry (proteins)	:	Engh & Huber (2001)
Ideal geometry (DNA, RNA)	:	Parkinson et al. (1996)
Validation Pipeline (wwPDB-VP)	:	recalc28949

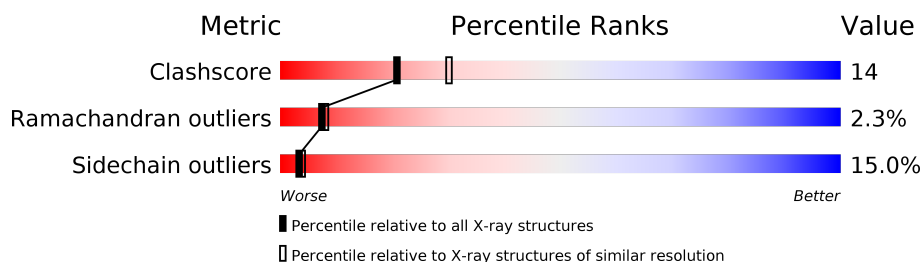
1 Overall quality at a glance

The following experimental techniques were used to determine the structure:

X-RAY DIFFRACTION

The reported resolution of this entry is 2.40 Å.

Percentile scores (ranging between 0-100) for global validation metrics of the entry are shown in the following graphic. The table shows the number of entries on which the scores are based.



Metric	Whole archive (#Entries)	Similar resolution (#Entries, resolution range(Å))
Clashscore	112137	3674 (2.40-2.40)
Ramachandran outliers	110173	3616 (2.40-2.40)
Sidechain outliers	110143	3617 (2.40-2.40)

The table below summarises the geometric issues observed across the polymeric chains and their fit to the electron density. The red, orange, yellow and green segments on the lower bar indicate the fraction of residues that contain outliers for ≥ 3 , 2, 1 and 0 types of geometric quality criteria. A grey segment represents the fraction of residues that are not modelled. The numeric value for each fraction is indicated below the corresponding segment, with a dot representing fractions $\leq 5\%$. The upper red bar (where present) indicates the fraction of residues that have poor fit to the electron density. The numeric value is given above the bar.

Note EDS was not executed.

Mol	Chain	Length	Quality of chain
1	A	842	 66% 25% 6% ..

2 Entry composition [i](#)

There are 6 unique types of molecules in this entry. The entry contains 7087 atoms, of which 0 are hydrogens and 0 are deuteriums.

In the tables below, the ZeroOcc column contains the number of atoms modelled with zero occupancy, the AltConf column contains the number of residues with at least one atom in alternate conformation and the Trace column contains the number of residues modelled with at most 2 atoms.

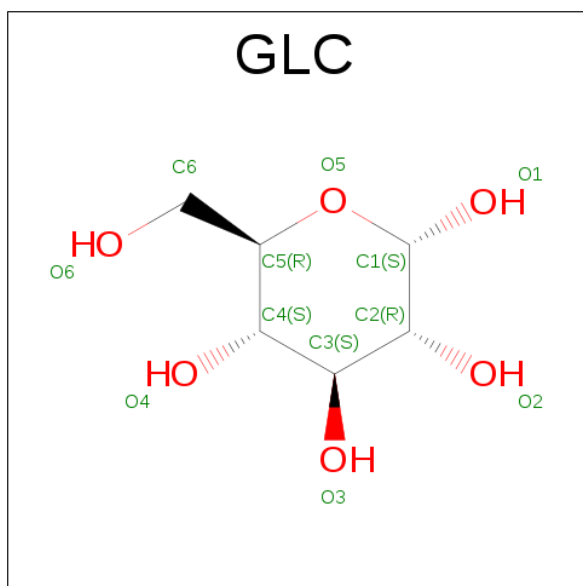
- Molecule 1 is a protein called PYRIDOXAL PHOSPHORYLASE B.

Mol	Chain	Residues	Atoms					ZeroOcc	AltConf	Trace
			Total	C	N	O	S			
1	A	830	6749	4303	1189	1227	30	0	0	0

There is a discrepancy between the modelled and reference sequences:

Chain	Residue	Modelled	Actual	Comment	Reference
A	609	ALA	PRO	CONFLICT	UNP P00489

- Molecule 2 is GLUCOSE (three-letter code: GLC) (formula: C₆H₁₂O₆).



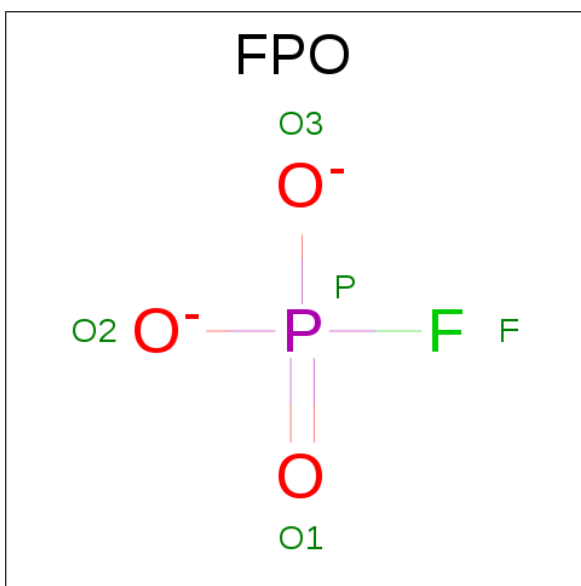
Mol	Chain	Residues	Atoms			ZeroOcc	AltConf
			Total	C	O		
2	A	1	12	6	6	0	0

- Molecule 3 is PYRIDOXAL-5'-PHOSPHATE (three-letter code: PLP) (formula: C₈H₁₀NO₆P).



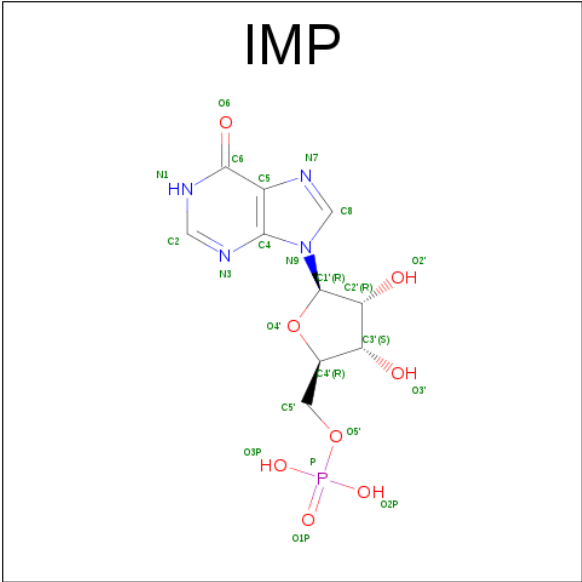
Mol	Chain	Residues	Atoms				ZeroOcc	AltConf
3	A	1	Total	C	N	O	0	0
			11	8	1	2		

- Molecule 4 is FLUORO-PHOSPHITE ION (three-letter code: FPO) (formula: FO_3P).



Mol	Chain	Residues	Atoms				ZeroOcc	AltConf
4	A	1	Total	F	O	P	0	0
			5	1	3	1		

- Molecule 5 is INOSINIC ACID (three-letter code: IMP) (formula: $\text{C}_{10}\text{H}_{13}\text{N}_4\text{O}_8\text{P}$).



Mol	Chain	Residues	Atoms					ZeroOcc	AltConf
5	A	1	Total	C	N	O	P	0	0
			23	10	4	8	1		

- Molecule 6 is water.

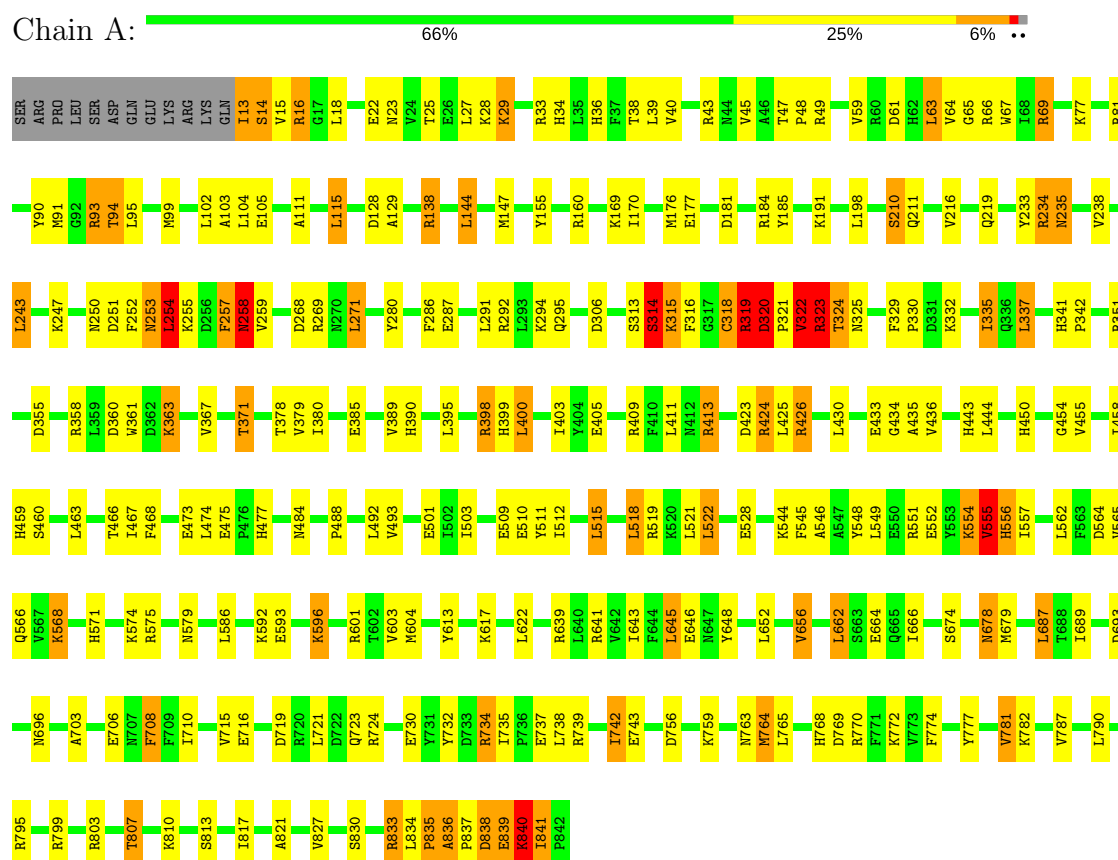
Mol	Chain	Residues	Atoms		ZeroOcc	AltConf
6	A	287	Total	O	0	0
			287	287		

3 Residue-property plots

These plots are drawn for all protein, RNA and DNA chains in the entry. The first graphic for a chain summarises the proportions of the various outlier classes displayed in the second graphic. The second graphic shows the sequence view annotated by issues in geometry and electron density. Residues are color-coded according to the number of geometric quality criteria for which they contain at least one outlier: green = 0, yellow = 1, orange = 2 and red = 3 or more. A red dot above a residue indicates a poor fit to the electron density ($RSRZ > 2$). Stretches of 2 or more consecutive residues without any outlier are shown as a green connector. Residues present in the sample, but not in the model, are shown in grey.

Note EDS was not executed.

• Molecule 1: PYRIDOXAL PHOSPHORYLASE B



4 Data and refinement statistics

Xtriage (Phenix) and EDS were not executed - this section is therefore incomplete.

Property	Value	Source
Space group	P 43 21 2	Depositor
Cell constants a, b, c, α , β , γ	128.50Å 128.50Å 116.30Å 90.00° 90.00° 90.00°	Depositor
Resolution (Å)	27.84 – 2.40	Depositor
% Data completeness (in resolution range)	84.5 (27.84-2.40)	Depositor
R_{merge}	0.08	Depositor
R_{sym}	(Not available)	Depositor
Refinement program	X-PLOR 3.851	Depositor
R, R_{free}	0.167 , 0.217	Depositor
Estimated twinning fraction	No twinning to report.	Xtriage
Total number of atoms	7087	wwPDB-VP
Average B, all atoms (Å ²)	24.0	wwPDB-VP

5 Model quality [i](#)

5.1 Standard geometry [i](#)

Bond lengths and bond angles in the following residue types are not validated in this section: IMP, FPO, GLC, PLP

The Z score for a bond length (or angle) is the number of standard deviations the observed value is removed from the expected value. A bond length (or angle) with $|Z| > 5$ is considered an outlier worth inspection. RMSZ is the root-mean-square of all Z scores of the bond lengths (or angles).

Mol	Chain	Bond lengths		Bond angles	
		RMSZ	$\# Z > 5$	RMSZ	$\# Z > 5$
1	A	0.37	0/6903	0.65	3/9344 (0.0%)

There are no bond length outliers.

All (3) bond angle outliers are listed below:

Mol	Chain	Res	Type	Atoms	Z	Observed(°)	Ideal(°)
1	A	554	LYS	N-CA-C	7.61	131.54	111.00
1	A	63	LEU	CA-CB-CG	5.79	128.61	115.30
1	A	556	HIS	N-CA-C	5.49	125.82	111.00

There are no chirality outliers.

There are no planarity outliers.

5.2 Too-close contacts [i](#)

In the following table, the Non-H and H(model) columns list the number of non-hydrogen atoms and hydrogen atoms in the chain respectively. The H(added) column lists the number of hydrogen atoms added and optimized by MolProbity. The Clashes column lists the number of clashes within the asymmetric unit, whereas Symm-Clashes lists symmetry related clashes.

Mol	Chain	Non-H	H(model)	H(added)	Clashes	Symm-Clashes
1	A	6749	0	6695	187	0
2	A	12	0	12	0	0
3	A	11	0	7	0	0
4	A	5	0	0	0	0
5	A	23	0	11	0	0
6	A	287	0	0	20	0
All	All	7087	0	6725	187	0

The all-atom clashscore is defined as the number of clashes found per 1000 atoms (including hydrogen atoms). The all-atom clashscore for this structure is 14.

All (187) close contacts within the same asymmetric unit are listed below, sorted by their clash magnitude.

Atom-1	Atom-2	Interatomic distance (Å)	Clash overlap (Å)
1:A:320:ASP:HB3	1:A:321:PRO:HD2	1.30	1.13
1:A:413:ARG:HH11	1:A:413:ARG:HG2	1.19	1.03
1:A:251:ASP:CG	1:A:252:PHE:H	1.71	0.94
1:A:320:ASP:HB3	1:A:321:PRO:CD	2.01	0.88
1:A:839:GLU:O	1:A:840:LYS:HG3	1.82	0.80
1:A:413:ARG:NH1	1:A:413:ARG:HG2	1.94	0.80
1:A:554:LYS:O	1:A:555:VAL:HG22	1.82	0.79
1:A:322:VAL:O	1:A:323:ARG:HB2	1.84	0.77
1:A:335:ILE:HG13	1:A:335:ILE:O	1.86	0.76
1:A:319:ARG:CG	1:A:320:ASP:H	1.99	0.76
1:A:319:ARG:HG2	1:A:320:ASP:H	1.51	0.76
1:A:678:ASN:HD22	1:A:679:MET:H	1.34	0.76
1:A:455:VAL:H	1:A:459:HIS:HD2	1.35	0.74
1:A:65:GLY:O	1:A:69:ARG:HG2	1.86	0.74
1:A:66:ARG:HG3	1:A:837:PRO:HB3	1.70	0.73
1:A:251:ASP:CG	1:A:252:PHE:N	2.43	0.72
1:A:545:PHE:CZ	1:A:656:VAL:HG13	2.25	0.72
1:A:160:ARG:HB2	1:A:243:LEU:HB3	1.70	0.72
1:A:503:ILE:HG12	1:A:521:LEU:HD11	1.72	0.72
1:A:764:MET:HE2	1:A:769:ASP:HA	1.72	0.71
1:A:515:LEU:HD22	1:A:518:LEU:HD22	1.72	0.71
1:A:546:ALA:HA	1:A:557:ILE:HD11	1.73	0.71
1:A:764:MET:CE	1:A:769:ASP:HA	2.21	0.70
1:A:335:ILE:HD11	1:A:337:LEU:HD11	1.74	0.69
1:A:601:ARG:HD2	6:A:1042:HOH:O	1.92	0.68
1:A:367:VAL:O	1:A:371:THR:HG23	1.94	0.68
1:A:571:HIS:HB2	1:A:574:LYS:HG3	1.74	0.68
1:A:257:PHE:O	1:A:258:ASN:HB2	1.94	0.68
1:A:703:ALA:HA	1:A:807:THR:HG21	1.75	0.67
1:A:708:PHE:HB3	1:A:710:ILE:CD1	2.25	0.66
1:A:703:ALA:CA	1:A:807:THR:HG21	2.24	0.66
1:A:335:ILE:HD11	1:A:337:LEU:CD1	2.26	0.66
1:A:719:ASP:O	1:A:723:GLN:HG2	1.95	0.66
1:A:379:VAL:HG22	6:A:1131:HOH:O	1.96	0.66
1:A:841:ILE:O	1:A:841:ILE:HG23	1.96	0.65
1:A:319:ARG:N	1:A:319:ARG:HD3	2.10	0.65
1:A:458:ILE:HD11	1:A:715:VAL:HG21	1.79	0.65

Continued on next page...

Continued from previous page...

Atom-1	Atom-2	Interatomic distance (Å)	Clash overlap (Å)
1:A:678:ASN:ND2	1:A:679:MET:H	1.94	0.65
1:A:13:ILE:O	1:A:14:SER:HB2	1.96	0.64
1:A:708:PHE:HB3	1:A:710:ILE:HD12	1.79	0.64
1:A:841:ILE:O	1:A:841:ILE:CG2	2.46	0.64
1:A:678:ASN:HD22	1:A:678:ASN:N	1.94	0.64
1:A:323:ARG:O	1:A:325:ASN:N	2.31	0.64
1:A:360:ASP:OD1	1:A:363:LYS:HB2	1.98	0.63
1:A:184:ARG:HE	1:A:185:TYR:HE1	1.47	0.63
1:A:329:PHE:HB3	1:A:330:PRO:HD3	1.81	0.62
1:A:730:GLU:O	1:A:734:ARG:HG2	1.98	0.62
1:A:554:LYS:O	1:A:555:VAL:HG13	2.00	0.62
1:A:737:GLU:HG3	6:A:1200:HOH:O	2.00	0.61
1:A:795:ARG:O	1:A:799:ARG:HG3	2.00	0.61
1:A:423:ASP:O	1:A:426:ARG:HG3	2.01	0.61
1:A:69:ARG:NH1	1:A:840:LYS:HG2	2.15	0.61
1:A:181:ASP:HB3	1:A:184:ARG:NH1	2.17	0.60
1:A:493:VAL:CG2	1:A:512:ILE:HD12	2.32	0.60
1:A:34:HIS:HD2	1:A:38:THR:OG1	1.84	0.60
1:A:316:PHE:HE1	1:A:332:LYS:HZ1	1.50	0.59
1:A:15:VAL:HG11	1:A:509:GLU:OE2	2.02	0.59
1:A:16:ARG:HB3	1:A:105:GLU:HB3	1.83	0.59
1:A:703:ALA:HB2	1:A:807:THR:HG21	1.85	0.59
1:A:641:ARG:HG3	6:A:1216:HOH:O	2.02	0.58
1:A:703:ALA:CB	1:A:807:THR:HG21	2.34	0.58
1:A:235:ASN:H	1:A:235:ASN:HD22	1.52	0.57
1:A:463:LEU:HA	1:A:467:ILE:HG22	1.86	0.57
1:A:15:VAL:HG11	1:A:509:GLU:CD	2.24	0.57
1:A:592:LYS:HG3	1:A:593:GLU:HG2	1.87	0.56
1:A:268:ASP:O	1:A:271:LEU:HB2	2.05	0.56
1:A:554:LYS:C	1:A:555:VAL:HG22	2.26	0.55
1:A:571:HIS:HB2	1:A:574:LYS:CG	2.35	0.55
1:A:253:ASN:O	1:A:254:LEU:HB2	2.05	0.55
1:A:322:VAL:O	1:A:322:VAL:HG12	2.07	0.55
1:A:604:MET:HB3	1:A:645:LEU:HD22	1.89	0.54
1:A:351:ARG:O	1:A:355:ASP:HB2	2.07	0.54
1:A:219:GLN:HG3	6:A:1267:HOH:O	2.08	0.54
1:A:81:ARG:HG3	1:A:155:TYR:HE1	1.73	0.54
1:A:59:VAL:HG21	1:A:99:MET:HE3	1.90	0.54
1:A:488:PRO:O	1:A:492:LEU:HB3	2.08	0.53
1:A:678:ASN:N	1:A:678:ASN:ND2	2.55	0.52
1:A:764:MET:HE3	6:A:1080:HOH:O	2.08	0.52

Continued on next page...

Continued from previous page...

Atom-1	Atom-2	Interatomic distance (Å)	Clash overlap (Å)
1:A:836:ALA:HB1	1:A:837:PRO:CD	2.39	0.52
1:A:836:ALA:HB1	1:A:837:PRO:HD2	1.90	0.52
1:A:319:ARG:CG	1:A:320:ASP:N	2.70	0.52
1:A:466:THR:HG22	1:A:467:ILE:N	2.24	0.52
1:A:94:THR:CG2	6:A:1107:HOH:O	2.58	0.52
1:A:316:PHE:HE1	1:A:332:LYS:NZ	2.07	0.52
1:A:91:MET:HB2	1:A:129:ALA:HB3	1.93	0.51
1:A:66:ARG:CG	1:A:837:PRO:HB3	2.39	0.51
1:A:450:HIS:HE1	6:A:1180:HOH:O	1.94	0.51
1:A:810:LYS:O	1:A:810:LYS:HG2	2.11	0.51
1:A:378:THR:OG1	1:A:380:ILE:HG12	2.11	0.51
1:A:568:LYS:HE2	6:A:1145:HOH:O	2.11	0.51
1:A:177:GLU:OE2	1:A:617:LYS:NZ	2.41	0.50
1:A:95:LEU:HD11	1:A:99:MET:HE3	1.92	0.50
1:A:313:SER:O	1:A:314:SER:C	2.49	0.50
1:A:235:ASN:HA	1:A:833:ARG:HG3	1.94	0.50
1:A:430:LEU:HD22	1:A:443:HIS:HB3	1.94	0.50
1:A:361:TRP:CH2	1:A:405:GLU:HG2	2.47	0.49
1:A:735:ILE:HG22	1:A:738:LEU:H	1.77	0.49
1:A:777:TYR:O	1:A:781:VAL:HG13	2.12	0.49
1:A:138:ARG:O	1:A:138:ARG:HD3	2.12	0.49
1:A:739:ARG:O	1:A:743:GLU:HG3	2.12	0.49
1:A:678:ASN:HD22	1:A:679:MET:N	2.05	0.49
1:A:742:ILE:HD11	1:A:774:PHE:CZ	2.48	0.49
1:A:511:TYR:CE2	1:A:512:ILE:HD13	2.48	0.49
1:A:434:GLY:O	1:A:435:ALA:C	2.51	0.48
1:A:519:ARG:O	1:A:522:LEU:HB2	2.12	0.48
1:A:14:SER:C	6:A:1273:HOH:O	2.52	0.48
1:A:548:TYR:HA	1:A:551:ARG:HH11	1.79	0.48
1:A:732:TYR:CZ	1:A:739:ARG:HG3	2.49	0.48
1:A:424:ARG:NH2	1:A:473:GLU:OE1	2.39	0.48
1:A:170:ILE:HG12	1:A:646:GLU:HG3	1.95	0.48
1:A:181:ASP:HB3	1:A:184:ARG:HH11	1.79	0.47
1:A:575:ARG:HD3	1:A:666:ILE:O	2.13	0.47
1:A:648:TYR:HA	1:A:652:LEU:HD23	1.97	0.47
1:A:596:LYS:O	1:A:639:ARG:NH2	2.48	0.47
1:A:15:VAL:HB	6:A:1258:HOH:O	2.15	0.47
1:A:566:GLN:HB2	1:A:664:GLU:HB2	1.96	0.47
1:A:322:VAL:CG1	1:A:322:VAL:O	2.63	0.46
1:A:61:ASP:O	1:A:64:VAL:HG22	2.15	0.46
1:A:687:LEU:HD12	1:A:687:LEU:HA	1.82	0.46

Continued on next page...

Continued from previous page...

Atom-1	Atom-2	Interatomic distance (Å)	Clash overlap (Å)
1:A:322:VAL:O	1:A:323:ARG:CB	2.62	0.46
1:A:834:LEU:HG	1:A:835:PRO:HD2	1.98	0.46
1:A:399:HIS:O	1:A:403:ILE:HG13	2.16	0.46
1:A:554:LYS:O	1:A:555:VAL:CG2	2.59	0.46
1:A:329:PHE:HD2	1:A:371:THR:HG21	1.81	0.46
1:A:319:ARG:NE	1:A:320:ASP:N	2.63	0.45
1:A:250:ASN:HA	1:A:269:ARG:HH12	1.82	0.45
1:A:291:LEU:O	1:A:295:GLN:HG3	2.16	0.45
1:A:169:LYS:O	1:A:176:MET:N	2.47	0.45
1:A:329:PHE:CD2	1:A:371:THR:HG21	2.52	0.45
1:A:475:GLU:HB3	1:A:477:HIS:CE1	2.52	0.45
1:A:67:TRP:HA	1:A:238:VAL:HB	1.98	0.45
1:A:367:VAL:O	1:A:371:THR:CG2	2.64	0.44
1:A:93:ARG:CG	1:A:93:ARG:HH11	2.30	0.44
1:A:319:ARG:NE	1:A:320:ASP:H	2.16	0.44
1:A:355:ASP:OD2	1:A:398:ARG:HD3	2.17	0.44
1:A:678:ASN:ND2	1:A:679:MET:N	2.61	0.44
1:A:103:ALA:HA	6:A:1006:HOH:O	2.17	0.44
1:A:467:ILE:HG23	1:A:468:PHE:CG	2.52	0.44
1:A:169:LYS:HB2	1:A:176:MET:HB2	2.00	0.44
1:A:252:PHE:C	1:A:254:LEU:H	2.20	0.44
1:A:280:TYR:OH	1:A:291:LEU:HB3	2.18	0.44
1:A:36:HIS:O	1:A:40:VAL:HA	2.17	0.44
1:A:319:ARG:H	1:A:319:ARG:HD3	1.78	0.44
1:A:314:SER:HB3	1:A:315:LYS:H	1.43	0.43
1:A:493:VAL:HG21	1:A:512:ILE:HD12	1.99	0.43
1:A:518:LEU:HD12	1:A:518:LEU:HA	1.91	0.43
1:A:689:ILE:O	1:A:689:ILE:HG23	2.17	0.43
1:A:15:VAL:HG12	6:A:1031:HOH:O	2.17	0.43
1:A:316:PHE:C	1:A:318:CYS:H	2.21	0.43
1:A:28:LYS:HG3	1:A:111:ALA:HB1	2.00	0.43
1:A:413:ARG:NH1	1:A:413:ARG:CG	2.71	0.43
1:A:424:ARG:HH22	1:A:473:GLU:CD	2.20	0.43
1:A:144:LEU:HD12	1:A:147:MET:CE	2.48	0.43
1:A:15:VAL:HG23	1:A:501:GLU:OE1	2.17	0.43
1:A:564:ASP:HB3	1:A:603:VAL:HA	2.01	0.43
1:A:458:ILE:HD11	1:A:715:VAL:CG2	2.48	0.43
1:A:703:ALA:HB2	1:A:807:THR:CG2	2.48	0.43
1:A:730:GLU:O	1:A:734:ARG:CG	2.64	0.42
1:A:484:ASN:ND2	6:A:1019:HOH:O	2.52	0.42
1:A:770:ARG:HD3	6:A:1132:HOH:O	2.19	0.42

Continued on next page...

Continued from previous page...

Atom-1	Atom-2	Interatomic distance (Å)	Clash overlap (Å)
1:A:821:ALA:HB1	1:A:827:VAL:HG23	2.00	0.42
1:A:390:HIS:HD2	6:A:1070:HOH:O	2.02	0.42
1:A:604:MET:HB3	1:A:645:LEU:CD2	2.49	0.42
1:A:93:ARG:HG3	1:A:93:ARG:HH11	1.85	0.42
1:A:94:THR:HG22	6:A:1107:HOH:O	2.17	0.42
1:A:341:HIS:N	1:A:342:PRO:CD	2.83	0.42
1:A:562:LEU:HD21	1:A:662:LEU:HB2	2.02	0.42
1:A:678:ASN:H	1:A:678:ASN:ND2	2.18	0.41
1:A:15:VAL:HG22	6:A:1273:HOH:O	2.19	0.41
1:A:233:TYR:CE1	1:A:234:ARG:HD3	2.56	0.41
1:A:398:ARG:O	1:A:398:ARG:HG3	2.20	0.41
1:A:455:VAL:HG23	1:A:674:SER:HB2	2.03	0.41
1:A:518:LEU:O	1:A:521:LEU:HB2	2.20	0.41
1:A:77:LYS:HA	1:A:77:LYS:HD2	1.88	0.41
1:A:286:PHE:CD1	1:A:385:GLU:HG2	2.56	0.41
1:A:389:VAL:HG13	1:A:400:LEU:HD11	2.03	0.41
1:A:115:LEU:HA	1:A:115:LEU:HD12	1.96	0.41
1:A:25:THR:O	1:A:29:LYS:HG2	2.21	0.41
1:A:47:THR:HB	1:A:48:PRO:HD2	2.02	0.41
1:A:716:GLU:HB2	6:A:1033:HOH:O	2.21	0.41
1:A:294:LYS:HG3	1:A:395:LEU:HD21	2.02	0.41
1:A:405:GLU:O	1:A:409:ARG:HG3	2.21	0.40
1:A:49:ARG:NH2	6:A:1201:HOH:O	2.55	0.40
1:A:411:LEU:HA	1:A:411:LEU:HD23	1.86	0.40
1:A:454:GLY:HA3	1:A:460:SER:OG	2.21	0.40
1:A:693:ASP:O	1:A:696:ASN:HB2	2.21	0.40
1:A:813:SER:O	1:A:817:ILE:HG12	2.21	0.40

There are no symmetry-related clashes.

5.3 Torsion angles ⓘ

5.3.1 Protein backbone ⓘ

In the following table, the Percentiles column shows the percent Ramachandran outliers of the chain as a percentile score with respect to all X-ray entries followed by that with respect to entries of similar resolution.

The Analysed column shows the number of residues for which the backbone conformation was analysed, and the total number of residues.

Mol	Chain	Analysed	Favoured	Allowed	Outliers	Percentiles
1	A	828/842 (98%)	770 (93%)	39 (5%)	19 (2%)	7 8

All (19) Ramachandran outliers are listed below:

Mol	Chain	Res	Type
1	A	210	SER
1	A	254	LEU
1	A	258	ASN
1	A	320	ASP
1	A	323	ARG
1	A	324	THR
1	A	555	VAL
1	A	556	HIS
1	A	839	GLU
1	A	840	LYS
1	A	14	SER
1	A	259	VAL
1	A	836	ALA
1	A	43	ARG
1	A	314	SER
1	A	835	PRO
1	A	838	ASP
1	A	319	ARG
1	A	322	VAL

5.3.2 Protein sidechains ⓘ

In the following table, the Percentiles column shows the percent sidechain outliers of the chain as a percentile score with respect to all X-ray entries followed by that with respect to entries of similar resolution.

The Analysed column shows the number of residues for which the sidechain conformation was analysed, and the total number of residues.

Mol	Chain	Analysed	Rotameric	Outliers	Percentiles
1	A	719/731 (98%)	611 (85%)	108 (15%)	3 4

All (108) residues with a non-rotameric sidechain are listed below:

Mol	Chain	Res	Type
1	A	13	ILE
1	A	16	ARG

Continued on next page...

Continued from previous page...

Mol	Chain	Res	Type
1	A	18	LEU
1	A	22	GLU
1	A	23	ASN
1	A	27	LEU
1	A	29	LYS
1	A	33	ARG
1	A	39	LEU
1	A	45	VAL
1	A	63	LEU
1	A	69	ARG
1	A	90	TYR
1	A	93	ARG
1	A	94	THR
1	A	102	LEU
1	A	104	LEU
1	A	115	LEU
1	A	128	ASP
1	A	138	ARG
1	A	144	LEU
1	A	191	LYS
1	A	198	LEU
1	A	210	SER
1	A	211	GLN
1	A	216	VAL
1	A	234	ARG
1	A	235	ASN
1	A	243	LEU
1	A	247	LYS
1	A	253	ASN
1	A	254	LEU
1	A	255	LYS
1	A	257	PHE
1	A	258	ASN
1	A	271	LEU
1	A	287	GLU
1	A	292	ARG
1	A	306	ASP
1	A	314	SER
1	A	315	LYS
1	A	318	CYS
1	A	319	ARG
1	A	320	ASP

Continued on next page...

Continued from previous page...

Mol	Chain	Res	Type
1	A	322	VAL
1	A	323	ARG
1	A	324	THR
1	A	335	ILE
1	A	337	LEU
1	A	358	ARG
1	A	363	LYS
1	A	371	THR
1	A	398	ARG
1	A	400	LEU
1	A	413	ARG
1	A	424	ARG
1	A	425	LEU
1	A	426	ARG
1	A	433	GLU
1	A	436	VAL
1	A	444	LEU
1	A	474	LEU
1	A	510	GLU
1	A	515	LEU
1	A	518	LEU
1	A	522	LEU
1	A	528	GLU
1	A	544	LYS
1	A	549	LEU
1	A	552	GLU
1	A	555	VAL
1	A	565	VAL
1	A	568	LYS
1	A	579	ASN
1	A	586	LEU
1	A	596	LYS
1	A	613	TYR
1	A	622	LEU
1	A	643	ILE
1	A	645	LEU
1	A	656	VAL
1	A	662	LEU
1	A	678	ASN
1	A	687	LEU
1	A	706	GLU
1	A	708	PHE

Continued on next page...

Continued from previous page...

Mol	Chain	Res	Type
1	A	721	LEU
1	A	724	ARG
1	A	734	ARG
1	A	742	ILE
1	A	756	ASP
1	A	759	LYS
1	A	763	ASN
1	A	764	MET
1	A	765	LEU
1	A	768	HIS
1	A	772	LYS
1	A	781	VAL
1	A	782	LYS
1	A	787	VAL
1	A	790	LEU
1	A	803	ARG
1	A	807	THR
1	A	830	SER
1	A	833	ARG
1	A	838	ASP
1	A	840	LYS
1	A	841	ILE

Some sidechains can be flipped to improve hydrogen bonding and reduce clashes. All (16) such sidechains are listed below:

Mol	Chain	Res	Type
1	A	34	HIS
1	A	211	GLN
1	A	235	ASN
1	A	253	ASN
1	A	390	HIS
1	A	412	ASN
1	A	450	HIS
1	A	459	HIS
1	A	477	HIS
1	A	481	ASN
1	A	484	ASN
1	A	560	ASN
1	A	566	GLN
1	A	579	ASN
1	A	678	ASN
1	A	763	ASN

5.3.3 RNA ⓘ

There are no RNA molecules in this entry.

5.4 Non-standard residues in protein, DNA, RNA chains ⓘ

There are no non-standard protein/DNA/RNA residues in this entry.

5.5 Carbohydrates ⓘ

There are no carbohydrates in this entry.

5.6 Ligand geometry ⓘ

4 ligands are modelled in this entry.

In the following table, the Counts columns list the number of bonds (or angles) for which Mogul statistics could be retrieved, the number of bonds (or angles) that are observed in the model and the number of bonds (or angles) that are defined in the chemical component dictionary. The Link column lists molecule types, if any, to which the group is linked. The Z score for a bond length (or angle) is the number of standard deviations the observed value is removed from the expected value. A bond length (or angle) with $|Z| > 2$ is considered an outlier worth inspection. RMSZ is the root-mean-square of all Z scores of the bond lengths (or angles).

Mol	Type	Chain	Res	Link	Bond lengths			Bond angles		
					Counts	RMSZ	# $ Z > 2$	Counts	RMSZ	# $ Z > 2$
5	IMP	A	930	-	21,25,25	2.57	8 (38%)	22,38,38	2.92	10 (45%)
4	FPO	A	997	-	2,4,4	1.46	0	0,6,6	0.00	-
2	GLC	A	998	-	12,12,12	0.98	0	17,17,17	0.70	0
3	PLP	A	999	1	11,11,16	1.34	1 (9%)	15,15,23	1.53	3 (20%)

In the following table, the Chirals column lists the number of chiral outliers, the number of chiral centers analysed, the number of these observed in the model and the number defined in the chemical component dictionary. Similar counts are reported in the Torsion and Rings columns. '-' means no outliers of that kind were identified.

Mol	Type	Chain	Res	Link	Chirals	Torsions	Rings
5	IMP	A	930	-	-	0/6/26/26	0/3/3/3
4	FPO	A	997	-	-	0/0/0/0	0/0/0/0
2	GLC	A	998	-	-	0/2/22/22	0/1/1/1
3	PLP	A	999	1	-	0/2/2/8	0/1/1/1

All (9) bond length outliers are listed below:

Mol	Chain	Res	Type	Atoms	Z	Observed(Å)	Ideal(Å)
5	A	930	IMP	C2'-C1'	-3.81	1.47	1.53
5	A	930	IMP	C5-C4	-2.14	1.35	1.40
5	A	930	IMP	C2'-C3'	2.31	1.59	1.53
3	A	999	PLP	C2-N1	2.85	1.39	1.33
5	A	930	IMP	C2-N1	3.29	1.40	1.33
5	A	930	IMP	C5'-C4'	3.30	1.62	1.51
5	A	930	IMP	C6-N1	3.75	1.39	1.33
5	A	930	IMP	O4'-C1'	5.34	1.48	1.41
5	A	930	IMP	C8-N7	5.58	1.45	1.34

All (13) bond angle outliers are listed below:

Mol	Chain	Res	Type	Atoms	Z	Observed(°)	Ideal(°)
5	A	930	IMP	N3-C2-N1	-6.79	122.95	128.86
5	A	930	IMP	O4'-C4'-C3'	-4.11	97.00	105.17
5	A	930	IMP	O4'-C4'-C5'	-3.83	96.45	109.40
5	A	930	IMP	O2'-C2'-C1'	-2.82	102.80	111.61
3	A	999	PLP	C5-C6-N1	-2.66	119.38	123.87
3	A	999	PLP	C5A-C5-C6	-2.19	115.61	119.35
5	A	930	IMP	C4-C5-N7	2.32	111.65	109.41
5	A	930	IMP	O2'-C2'-C3'	2.43	119.60	111.83
5	A	930	IMP	O5'-C5'-C4'	2.44	117.66	109.00
5	A	930	IMP	O3P-P-O5'	2.63	113.74	106.73
3	A	999	PLP	C6-C5-C4	2.88	120.59	118.18
5	A	930	IMP	C4'-O4'-C1'	5.61	115.74	109.77
5	A	930	IMP	C2-N1-C6	6.31	126.45	115.91

There are no chirality outliers.

There are no torsion outliers.

There are no ring outliers.

No monomer is involved in short contacts.

5.7 Other polymers [i](#)

There are no such residues in this entry.

5.8 Polymer linkage issues [i](#)

There are no chain breaks in this entry.

6 Fit of model and data

6.1 Protein, DNA and RNA chains

EDS was not executed - this section is therefore empty.

6.2 Non-standard residues in protein, DNA, RNA chains

EDS was not executed - this section is therefore empty.

6.3 Carbohydrates

EDS was not executed - this section is therefore empty.

6.4 Ligands

EDS was not executed - this section is therefore empty.

6.5 Other polymers

EDS was not executed - this section is therefore empty.