



Full wwPDB X-ray Structure Validation Report ⓘ

Feb 13, 2017 – 03:34 am GMT

PDB ID : 1SVG
Title : Crystal Structure of Protein Kinase A in Complex with Azepane Derivative 4
Authors : Breitenlechner, C.B.; Wegge, T.; Berillon, L.; Graul, K.; Marzenell, K.; Friebe, W.-G.; Thomas, U.; Schumacher, R.; Huber, R.; Engh, R.A.; Masjost, B.
Deposited on : 2004-03-29
Resolution : 2.02 Å(reported)

This is a Full wwPDB X-ray Structure Validation Report for a publicly released PDB entry.

We welcome your comments at validation@mail.wwpdb.org

A user guide is available at

<http://wwpdb.org/validation/2016/XrayValidationReportHelp>

with specific help available everywhere you see the ⓘ symbol.

The following versions of software and data (see [references ⓘ](#)) were used in the production of this report:

MolProbity : 4.02b-467
Mogul : 1.7.2 (RC1), CSD as538be (2017)
Xtriage (Phenix) : **NOT EXECUTED**
EDS : **NOT EXECUTED**
Percentile statistics : 20161228.v01 (using entries in the PDB archive December 28th 2016)
Ideal geometry (proteins) : Engh & Huber (2001)
Ideal geometry (DNA, RNA) : Parkinson et al. (1996)
Validation Pipeline (wwPDB-VP) : recalc28949

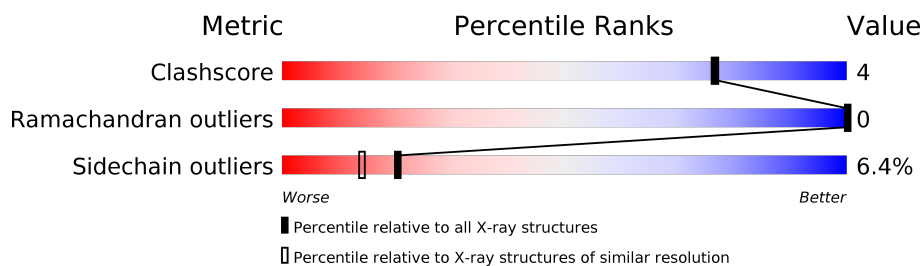
1 Overall quality at a glance

The following experimental techniques were used to determine the structure:

X-RAY DIFFRACTION

The reported resolution of this entry is 2.02 Å.

Percentile scores (ranging between 0-100) for global validation metrics of the entry are shown in the following graphic. The table shows the number of entries on which the scores are based.



Metric	Whole archive (#Entries)	Similar resolution (#Entries, resolution range(Å))
Clashscore	112137	9678 (2.04-2.00)
Ramachandran outliers	110173	9566 (2.04-2.00)
Sidechain outliers	110143	9565 (2.04-2.00)

The table below summarises the geometric issues observed across the polymeric chains and their fit to the electron density. The red, orange, yellow and green segments on the lower bar indicate the fraction of residues that contain outliers for ≥ 3 , 2, 1 and 0 types of geometric quality criteria. A grey segment represents the fraction of residues that are not modelled. The numeric value for each fraction is indicated below the corresponding segment, with a dot representing fractions $\leq 5\%$. The upper red bar (where present) indicates the fraction of residues that have poor fit to the electron density. The numeric value is given above the bar.

Note EDS was not executed.

Mol	Chain	Length	Quality of chain
1	A	350	
2	B	20	

2 Entry composition

There are 4 unique types of molecules in this entry. The entry contains 3138 atoms, of which 0 are hydrogens and 0 are deuteriums.

In the tables below, the ZeroOcc column contains the number of atoms modelled with zero occupancy, the AltConf column contains the number of residues with at least one atom in alternate conformation and the Trace column contains the number of residues modelled with at most 2 atoms.

- Molecule 1 is a protein called cAMP-dependent protein kinase, alpha-catalytic subunit.

Mol	Chain	Residues	Atoms						ZeroOcc	AltConf	Trace
1	A	341	Total	C	N	O	P	S	0	0	0
			2823	1824	472	515	3	9			

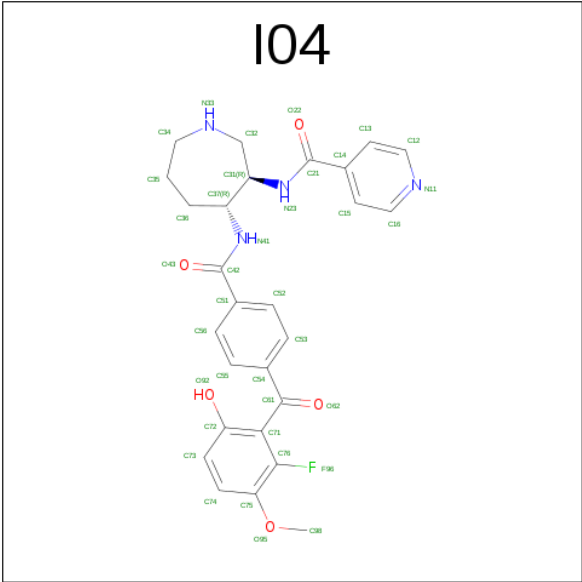
There are 3 discrepancies between the modelled and reference sequences:

Chain	Residue	Modelled	Actual	Comment	Reference
A	10	SEP	SER	MODIFIED RESIDUE	UNP P00517
A	197	TPO	THR	MODIFIED RESIDUE	UNP P00517
A	338	SEP	SER	MODIFIED RESIDUE	UNP P00517

- Molecule 2 is a protein called CAMP-DEPENDENT PROTEIN KINASE INHIBITOR, ALPHA FORM.

Mol	Chain	Residues	Atoms				ZeroOcc	AltConf	Trace
2	B	20	Total	C	N	O	0	0	0
			157	94	32	31			

- Molecule 3 is N-[(3R,4R)-4-[4-(2-FLUORO-6-HYDROXY-3-METHOXY-BENZOYL)-BENZAMINO]-AZEPAN-3-YL]ISONICOTINAMIDE (three-letter code: I04) (formula: C₂₇H₂₇FN₄O₅).



Mol	Chain	Residues	Atoms					ZeroOcc	AltConf
3	A	1	Total	C	F	N	O	0	0
			37	27	1	4	5		

- Molecule 4 is water.

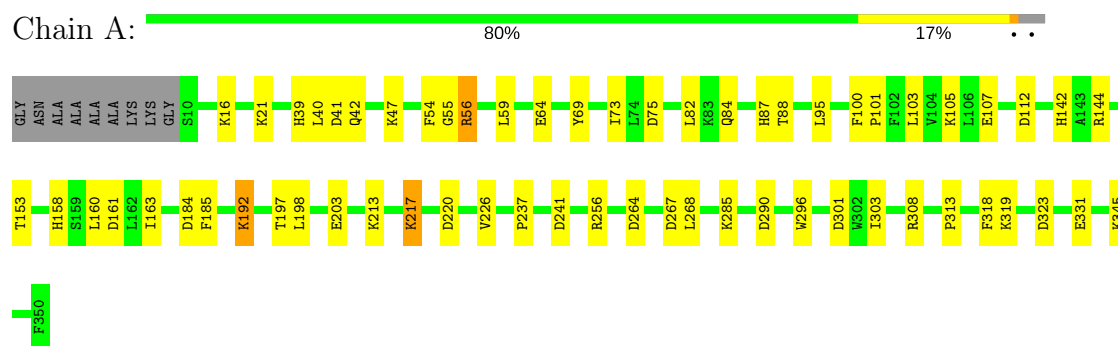
Mol	Chain	Residues	Atoms		ZeroOcc	AltConf
4	A	106	Total	O	0	0
			106	106		
4	B	15	Total	O	0	0
			15	15		

3 Residue-property plots [i](#)

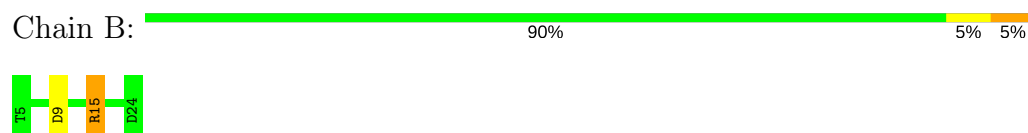
These plots are drawn for all protein, RNA and DNA chains in the entry. The first graphic for a chain summarises the proportions of the various outlier classes displayed in the second graphic. The second graphic shows the sequence view annotated by issues in geometry and electron density. Residues are color-coded according to the number of geometric quality criteria for which they contain at least one outlier: green = 0, yellow = 1, orange = 2 and red = 3 or more. A red dot above a residue indicates a poor fit to the electron density ($RSRZ > 2$). Stretches of 2 or more consecutive residues without any outlier are shown as a green connector. Residues present in the sample, but not in the model, are shown in grey.

Note EDS was not executed.

- Molecule 1: cAMP-dependent protein kinase, alpha-catalytic subunit



- Molecule 2: CAMP-DEPENDENT PROTEIN KINASE INHIBITOR, ALPHA FORM



4 Data and refinement statistics

Xtriage (Phenix) and EDS were not executed - this section is therefore incomplete.

Property	Value	Source
Space group	P 21 21 21	Depositor
Cell constants a, b, c, α , β , γ	74.24Å 76.85Å 79.91Å 90.00° 90.00° 90.00°	Depositor
Resolution (Å)	14.70 – 2.02	Depositor
% Data completeness (in resolution range)	81.7 (14.70-2.02)	Depositor
R_{merge}	(Not available)	Depositor
R_{sym}	(Not available)	Depositor
Refinement program	REFMAC 5.1.24	Depositor
R, R_{free}	0.181 , 0.227	Depositor
Estimated twinning fraction	No twinning to report.	Xtriage
Total number of atoms	3138	wwPDB-VP
Average B, all atoms (Å ²)	34.0	wwPDB-VP

5 Model quality

5.1 Standard geometry

Bond lengths and bond angles in the following residue types are not validated in this section: TPO, I04, SEP

The Z score for a bond length (or angle) is the number of standard deviations the observed value is removed from the expected value. A bond length (or angle) with $|Z| > 5$ is considered an outlier worth inspection. RMSZ is the root-mean-square of all Z scores of the bond lengths (or angles).

Mol	Chain	Bond lengths		Bond angles	
		RMSZ	# Z >5	RMSZ	# Z >5
1	A	0.68	0/2863	0.83	12/3856 (0.3%)
2	B	0.76	0/159	1.20	3/212 (1.4%)
All	All	0.68	0/3022	0.85	15/4068 (0.4%)

There are no bond length outliers.

All (15) bond angle outliers are listed below:

Mol	Chain	Res	Type	Atoms	Z	Observed(°)	Ideal(°)
2	B	15	ARG	NE-CZ-NH2	-9.14	115.73	120.30
1	A	75	ASP	CB-CG-OD2	7.89	125.40	118.30
1	A	56	ARG	NE-CZ-NH1	5.94	123.27	120.30
2	B	15	ARG	NE-CZ-NH1	5.86	123.23	120.30
1	A	267	ASP	CB-CG-OD2	5.83	123.54	118.30
1	A	308	ARG	NE-CZ-NH2	-5.62	117.49	120.30
1	A	290	ASP	CB-CG-OD2	5.54	123.28	118.30
1	A	323	ASP	CB-CG-OD2	5.53	123.27	118.30
2	B	9	ASP	CB-CG-OD2	5.52	123.27	118.30
1	A	184	ASP	CB-CG-OD2	5.36	123.13	118.30
1	A	112	ASP	CB-CG-OD2	5.33	123.10	118.30
1	A	161	ASP	CB-CG-OD2	5.22	123.00	118.30
1	A	301	ASP	CB-CG-OD2	5.17	122.95	118.30
1	A	241	ASP	CB-CG-OD2	5.11	122.90	118.30
1	A	264	ASP	CB-CG-OD2	5.00	122.80	118.30

There are no chirality outliers.

There are no planarity outliers.

5.2 Too-close contacts ⓘ

In the following table, the Non-H and H(model) columns list the number of non-hydrogen atoms and hydrogen atoms in the chain respectively. The H(added) column lists the number of hydrogen atoms added and optimized by MolProbity. The Clashes column lists the number of clashes within the asymmetric unit, whereas Symm-Clashes lists symmetry related clashes.

Mol	Chain	Non-H	H(model)	H(added)	Clashes	Symm-Clashes
1	A	2823	0	2792	21	0
2	B	157	0	146	1	0
3	A	37	0	26	0	0
4	A	106	0	0	2	0
4	B	15	0	0	0	0
All	All	3138	0	2964	21	0

The all-atom clashscore is defined as the number of clashes found per 1000 atoms (including hydrogen atoms). The all-atom clashscore for this structure is 4.

All (21) close contacts within the same asymmetric unit are listed below, sorted by their clash magnitude.

Atom-1	Atom-2	Interatomic distance (Å)	Clash overlap (Å)
1:A:39:HIS:H	1:A:42:GLN:HE21	1.33	0.77
1:A:163:ILE:HG22	1:A:217:LYS:HD3	1.79	0.65
1:A:39:HIS:N	1:A:42:GLN:HE21	1.98	0.60
1:A:54:PHE:HE1	1:A:82:LEU:HD12	1.68	0.59
1:A:54:PHE:CE1	1:A:82:LEU:HD12	2.40	0.57
1:A:84:GLN:O	1:A:88:THR:HG23	2.06	0.55
1:A:47:LYS:HE3	4:A:434:HOH:O	2.11	0.50
1:A:192:LYS:NZ	4:A:428:HOH:O	2.38	0.49
1:A:87:HIS:NE2	1:A:197:TPO:O3P	2.46	0.49
1:A:103:LEU:HD21	1:A:153:THR:CG2	2.43	0.48
1:A:142:HIS:CD2	1:A:313:PRO:HG2	2.49	0.47
1:A:163:ILE:CG2	1:A:217:LYS:HD3	2.45	0.46
1:A:56:ARG:NH2	1:A:331:GLU:O	2.48	0.46
1:A:203:GLU:OE2	2:B:15:ARG:HD3	2.16	0.46
1:A:100:PHE:CG	1:A:101:PRO:HD2	2.51	0.45
1:A:69:TYR:CE1	1:A:107:GLU:HG3	2.52	0.45
1:A:158:HIS:HE1	1:A:220:ASP:OD2	2.00	0.44
1:A:144:ARG:HA	1:A:296:TRP:CH2	2.55	0.42
1:A:226:VAL:HG13	1:A:237:PRO:HD2	2.01	0.42
1:A:103:LEU:HD22	1:A:185:PHE:HZ	1.84	0.42
1:A:55:GLY:HA3	1:A:73:ILE:O	2.20	0.41

There are no symmetry-related clashes.

5.3 Torsion angles [i](#)

5.3.1 Protein backbone [i](#)

In the following table, the Percentiles column shows the percent Ramachandran outliers of the chain as a percentile score with respect to all X-ray entries followed by that with respect to entries of similar resolution.

The Analysed column shows the number of residues for which the backbone conformation was analysed, and the total number of residues.

Mol	Chain	Analysed	Favoured	Allowed	Outliers	Percentiles	
1	A	337/350 (96%)	325 (96%)	12 (4%)	0	100	100
2	B	18/20 (90%)	18 (100%)	0	0	100	100
All	All	355/370 (96%)	343 (97%)	12 (3%)	0	100	100

There are no Ramachandran outliers to report.

5.3.2 Protein sidechains [i](#)

In the following table, the Percentiles column shows the percent sidechain outliers of the chain as a percentile score with respect to all X-ray entries followed by that with respect to entries of similar resolution.

The Analysed column shows the number of residues for which the sidechain conformation was analysed, and the total number of residues.

Mol	Chain	Analysed	Rotameric	Outliers	Percentiles	
1	A	299/302 (99%)	279 (93%)	20 (7%)	19	13
2	B	15/15 (100%)	15 (100%)	0	100	100
All	All	314/317 (99%)	294 (94%)	20 (6%)	20	14

All (20) residues with a non-rotameric sidechain are listed below:

Mol	Chain	Res	Type
1	A	16	LYS
1	A	21	LYS
1	A	40	LEU
1	A	41	ASP
1	A	59	LEU

Continued on next page...

Continued from previous page...

Mol	Chain	Res	Type
1	A	64	GLU
1	A	95	LEU
1	A	105	LYS
1	A	160	LEU
1	A	192	LYS
1	A	198	LEU
1	A	213	LYS
1	A	217	LYS
1	A	256	ARG
1	A	268	LEU
1	A	285	LYS
1	A	303	ILE
1	A	318	PHE
1	A	319	LYS
1	A	345	LYS

Some sidechains can be flipped to improve hydrogen bonding and reduce clashes. All (4) such sidechains are listed below:

Mol	Chain	Res	Type
1	A	42	GLN
1	A	77	GLN
1	A	113	ASN
1	A	158	HIS

5.3.3 RNA ⓘ

There are no RNA molecules in this entry.

5.4 Non-standard residues in protein, DNA, RNA chains ⓘ

3 non-standard protein/DNA/RNA residues are modelled in this entry.

In the following table, the Counts columns list the number of bonds (or angles) for which Mogul statistics could be retrieved, the number of bonds (or angles) that are observed in the model and the number of bonds (or angles) that are defined in the chemical component dictionary. The Link column lists molecule types, if any, to which the group is linked. The Z score for a bond length (or angle) is the number of standard deviations the observed value is removed from the expected value. A bond length (or angle) with $|Z| > 2$ is considered an outlier worth inspection. RMSZ is the root-mean-square of all Z scores of the bond lengths (or angles).

Mol	Type	Chain	Res	Link	Bond lengths			Bond angles		
					Counts	RMSZ	# Z > 2	Counts	RMSZ	# Z > 2
1	SEP	A	10	1	9,9,10	1.82	2 (22%)	9,12,14	1.42	1 (11%)
1	TPO	A	197	1	9,10,11	1.23	2 (22%)	10,14,16	0.91	0
1	SEP	A	338	1	9,9,10	1.49	2 (22%)	9,12,14	2.18	3 (33%)

In the following table, the Chirals column lists the number of chiral outliers, the number of chiral centers analysed, the number of these observed in the model and the number defined in the chemical component dictionary. Similar counts are reported in the Torsion and Rings columns. '-' means no outliers of that kind were identified.

Mol	Type	Chain	Res	Link	Chirals	Torsions	Rings
1	SEP	A	10	1	-	0/5/8/10	0/0/0/0
1	TPO	A	197	1	-	0/8/11/13	0/0/0/0
1	SEP	A	338	1	-	0/5/8/10	0/0/0/0

All (6) bond length outliers are listed below:

Mol	Chain	Res	Type	Atoms	Z	Observed(Å)	Ideal(Å)
1	A	338	SEP	CA-C	2.02	1.52	1.50
1	A	197	TPO	P-O1P	2.07	1.57	1.50
1	A	197	TPO	CA-C	2.11	1.53	1.50
1	A	338	SEP	P-O1P	2.84	1.60	1.50
1	A	10	SEP	CA-C	2.89	1.54	1.50
1	A	10	SEP	P-O1P	3.40	1.62	1.50

All (4) bond angle outliers are listed below:

Mol	Chain	Res	Type	Atoms	Z	Observed(°)	Ideal(°)
1	A	338	SEP	O3P-P-O2P	2.01	115.70	107.61
1	A	10	SEP	OG-CB-CA	2.91	111.03	108.17
1	A	338	SEP	OG-P-O1P	3.56	116.47	106.47
1	A	338	SEP	OG-CB-CA	4.24	112.34	108.17

There are no chirality outliers.

There are no torsion outliers.

There are no ring outliers.

1 monomer is involved in 1 short contact:

Mol	Chain	Res	Type	Clashes	Symm-Clashes
1	A	197	TPO	1	0

5.5 Carbohydrates [i](#)

There are no carbohydrates in this entry.

5.6 Ligand geometry [i](#)

1 ligand is modelled in this entry.

In the following table, the Counts columns list the number of bonds (or angles) for which Mogul statistics could be retrieved, the number of bonds (or angles) that are observed in the model and the number of bonds (or angles) that are defined in the chemical component dictionary. The Link column lists molecule types, if any, to which the group is linked. The Z score for a bond length (or angle) is the number of standard deviations the observed value is removed from the expected value. A bond length (or angle) with $|Z| > 2$ is considered an outlier worth inspection. RMSZ is the root-mean-square of all Z scores of the bond lengths (or angles).

Mol	Type	Chain	Res	Link	Bond lengths			Bond angles		
					Counts	RMSZ	# $ Z > 2$	Counts	RMSZ	# $ Z > 2$
3	I04	A	351	-	36,40,40	1.42	5 (13%)	46,55,55	1.58	7 (15%)

In the following table, the Chirals column lists the number of chiral outliers, the number of chiral centers analysed, the number of these observed in the model and the number defined in the chemical component dictionary. Similar counts are reported in the Torsion and Rings columns. '-' means no outliers of that kind were identified.

Mol	Type	Chain	Res	Link	Chirals	Torsions	Rings
3	I04	A	351	-	-	0/26/38/38	0/4/4/4

All (5) bond length outliers are listed below:

Mol	Chain	Res	Type	Atoms	Z	Observed(Å)	Ideal(Å)
3	A	351	I04	O92-C72	-3.58	1.29	1.36
3	A	351	I04	C71-C61	-3.38	1.44	1.50
3	A	351	I04	C51-C42	-2.14	1.45	1.50
3	A	351	I04	C21-N23	2.09	1.38	1.34
3	A	351	I04	C73-C72	2.42	1.43	1.39

All (7) bond angle outliers are listed below:

Mol	Chain	Res	Type	Atoms	Z	Observed(°)	Ideal(°)
3	A	351	I04	C32-C31-N23	-2.94	103.92	109.56
3	A	351	I04	O62-C61-C71	-2.86	114.65	119.81
3	A	351	I04	C76-C71-C61	-2.66	117.35	121.36
3	A	351	I04	C15-C16-N11	-2.58	119.12	123.63

Continued on next page...

Continued from previous page...

Mol	Chain	Res	Type	Atoms	Z	Observed(°)	Ideal(°)
3	A	351	I04	C55-C56-C51	-2.47	118.03	120.79
3	A	351	I04	C72-C71-C76	2.64	118.90	116.45
3	A	351	I04	C71-C61-C54	5.52	127.62	119.24

There are no chirality outliers.

There are no torsion outliers.

There are no ring outliers.

No monomer is involved in short contacts.

5.7 Other polymers [i](#)

There are no such residues in this entry.

5.8 Polymer linkage issues [i](#)

There are no chain breaks in this entry.

6 Fit of model and data

6.1 Protein, DNA and RNA chains

EDS was not executed - this section is therefore empty.

6.2 Non-standard residues in protein, DNA, RNA chains

EDS was not executed - this section is therefore empty.

6.3 Carbohydrates

EDS was not executed - this section is therefore empty.

6.4 Ligands

EDS was not executed - this section is therefore empty.

6.5 Other polymers

EDS was not executed - this section is therefore empty.