



Full wwPDB X-ray Structure Validation Report ⓘ

Jan 10, 2018 – 03:11 PM EST

PDB ID : 5SYS
Title : c-Src V281C bound to N-[3-({6-[(1E)-2-cyano-3-(methylamino)-3-oxoprop-1-en-1-yl]-7-(2-methoxyethyl)-7H-pyrrolo[2,3-d]pyrimidin-5-yl}ethynyl)-4-methylphenyl]-3-(trifluoromethyl)benzamide inhibitor
Authors : Dieter, E.M.; Merritt, E.A.; Maly, D.J.
Deposited on : 2016-08-11
Resolution : 2.80 Å(reported)

This is a Full wwPDB X-ray Structure Validation Report for a publicly released PDB entry.

We welcome your comments at validation@mail.wwpdb.org

A user guide is available at

<http://wwpdb.org/validation/2016/XrayValidationReportHelp>

with specific help available everywhere you see the ⓘ symbol.

The following versions of software and data (see [references ⓘ](#)) were used in the production of this report:

MolProbity : 4.02b-467
Mogul : 1.7.2 (RC1), CSD as538be (2017)
Xtriage (Phenix) : 1.9-1692
EDS : rb-20030736
Percentile statistics : 20161228.v01 (using entries in the PDB archive December 28th 2016)
Refmac : 5.8.0135
CCP4 : 6.5.0
Ideal geometry (proteins) : Engh & Huber (2001)
Ideal geometry (DNA, RNA) : Parkinson et al. (1996)
Validation Pipeline (wwPDB-VP) : rb-20030736

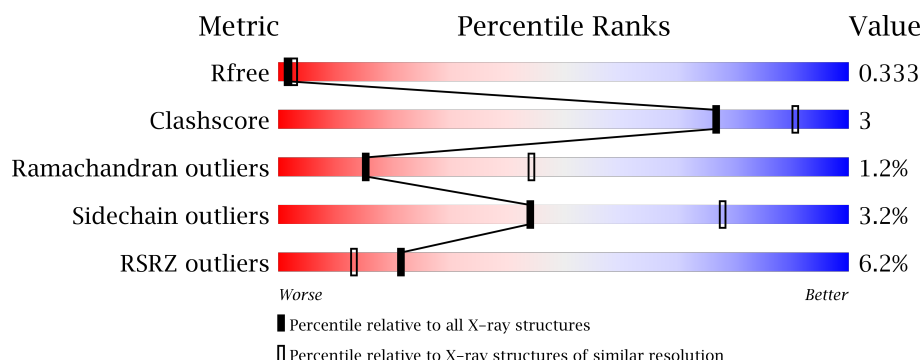
1 Overall quality at a glance

The following experimental techniques were used to determine the structure:

X-RAY DIFFRACTION

The reported resolution of this entry is 2.80 Å.

Percentile scores (ranging between 0-100) for global validation metrics of the entry are shown in the following graphic. The table shows the number of entries on which the scores are based.



Metric	Whole archive (#Entries)	Similar resolution (#Entries, resolution range(Å))
R_{free}	100719	2583 (2.80-2.80)
Clashscore	112137	3033 (2.80-2.80)
Ramachandran outliers	110173	2983 (2.80-2.80)
Sidechain outliers	110143	2985 (2.80-2.80)
RSRZ outliers	101464	2610 (2.80-2.80)

The table below summarises the geometric issues observed across the polymeric chains and their fit to the electron density. The red, orange, yellow and green segments on the lower bar indicate the fraction of residues that contain outliers for ≥ 3 , 2, 1 and 0 types of geometric quality criteria. A grey segment represents the fraction of residues that are not modelled. The numeric value for each fraction is indicated below the corresponding segment, with a dot representing fractions $\leq 5\%$. The upper red bar (where present) indicates the fraction of residues that have poor fit to the electron density. The numeric value is given above the bar.

Mol	Chain	Length	Quality of chain
1	A	286	<div> <div>8%</div> <div>79%</div> <div>11%</div> <div>10%</div> </div>
1	B	286	<div> <div>3%</div> <div>78%</div> <div>12%</div> <div>10%</div> </div>

2 Entry composition

There are 3 unique types of molecules in this entry. The entry contains 4297 atoms, of which 0 are hydrogens and 0 are deuteriums.

In the tables below, the ZeroOcc column contains the number of atoms modelled with zero occupancy, the AltConf column contains the number of residues with at least one atom in alternate conformation and the Trace column contains the number of residues modelled with at most 2 atoms.

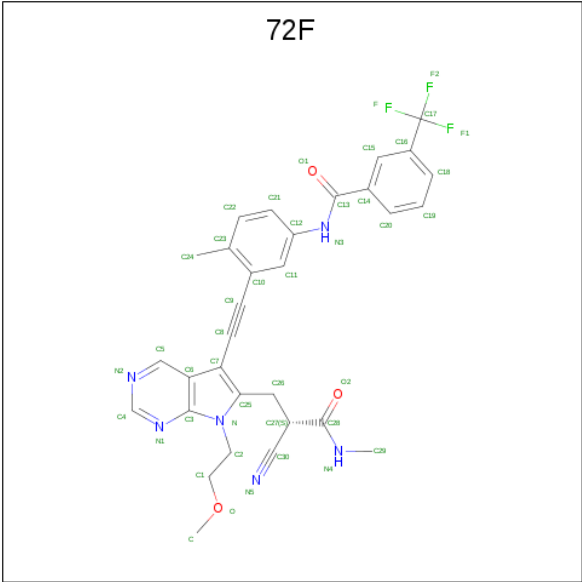
- Molecule 1 is a protein called Proto-oncogene tyrosine-protein kinase Src.

Mol	Chain	Residues	Atoms					ZeroOcc	AltConf	Trace
1	A	258	Total	C	N	O	S	0	1	0
			2072	1328	346	380	18			
1	B	258	Total	C	N	O	S	0	1	0
			2072	1328	346	380	18			

There are 8 discrepancies between the modelled and reference sequences:

Chain	Residue	Modelled	Actual	Comment	Reference
A	248	GLY	-	expression tag	UNP P00523
A	249	HIS	-	expression tag	UNP P00523
A	250	MET	-	expression tag	UNP P00523
A	281	CYS	VAL	engineered mutation	UNP P00523
B	248	GLY	-	expression tag	UNP P00523
B	249	HIS	-	expression tag	UNP P00523
B	250	MET	-	expression tag	UNP P00523
B	281	CYS	VAL	engineered mutation	UNP P00523

- Molecule 2 is N-[3-({6-[(2S)-2-cyano-3-(methylamino)-3-oxopropyl]-7-(2-methoxyethyl)-7H-pyrrolo[2,3-d]pyrimidin-5-yl}ethynyl)-4-methylphenyl]-3-(trifluoromethyl)benzamide (three-letter code: 72F) (formula: C₃₁H₂₇F₃N₆O₃).



Mol	Chain	Residues	Atoms					ZeroOcc	AltConf
2	A	1	Total	C	F	N	O	0	0
			43	31	3	6	3		
2	B	1	Total	C	F	N	O	0	0
			43	31	3	6	3		

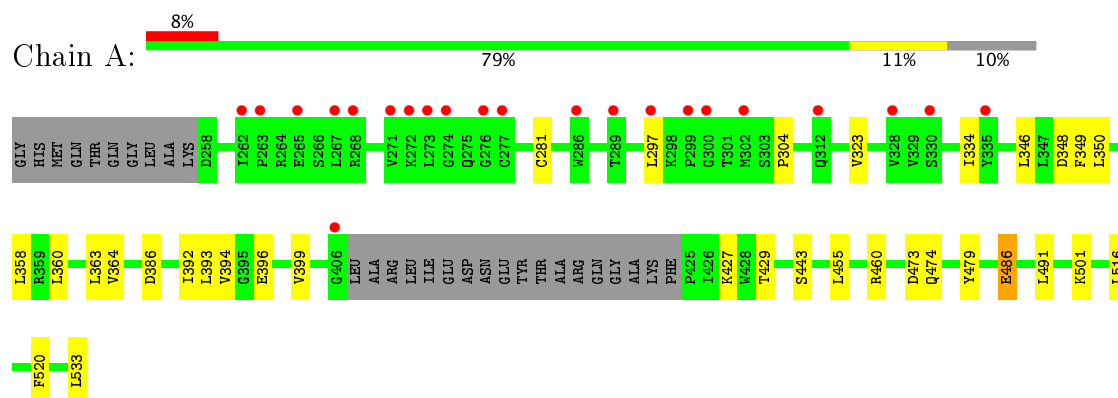
- Molecule 3 is water.

Mol	Chain	Residues	Atoms		ZeroOcc	AltConf
3	A	38	Total	O	0	0
			38	38		
3	B	29	Total	O	0	0
			29	29		

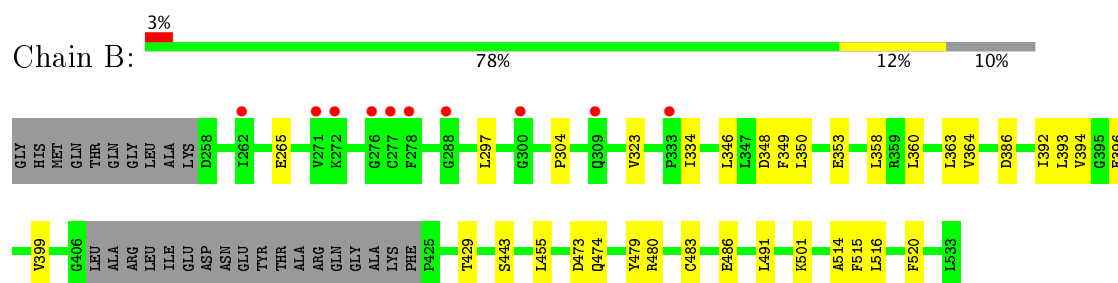
3 Residue-property plots [i](#)

These plots are drawn for all protein, RNA and DNA chains in the entry. The first graphic for a chain summarises the proportions of the various outlier classes displayed in the second graphic. The second graphic shows the sequence view annotated by issues in geometry and electron density. Residues are color-coded according to the number of geometric quality criteria for which they contain at least one outlier: green = 0, yellow = 1, orange = 2 and red = 3 or more. A red dot above a residue indicates a poor fit to the electron density ($RSRZ > 2$). Stretches of 2 or more consecutive residues without any outlier are shown as a green connector. Residues present in the sample, but not in the model, are shown in grey.

- Molecule 1: Proto-oncogene tyrosine-protein kinase Src



- Molecule 1: Proto-oncogene tyrosine-protein kinase Src



4 Data and refinement statistics

Property	Value	Source
Space group	P 1	Depositor
Cell constants a, b, c, α , β , γ	41.81Å 63.86Å 75.62Å 77.87° 90.10° 89.83°	Depositor
Resolution (Å)	73.94 – 2.80 43.41 – 2.80	Depositor EDS
% Data completeness (in resolution range)	86.5 (73.94-2.80) 80.7 (43.41-2.80)	Depositor EDS
R_{merge}	0.18	Depositor
R_{sym}	(Not available)	Depositor
$\langle I/\sigma(I) \rangle$ ¹	1.50 (at 2.81Å)	Xtriage
Refinement program	REFMAC 5.8.0155	Depositor
R, R_{free}	0.286 , 0.334 0.289 , 0.333	Depositor DCC
R_{free} test set	827 reflections (5.36%)	DCC
Wilson B-factor (Å ²)	47.4	Xtriage
Anisotropy	0.242	Xtriage
Bulk solvent k_{sol} (e/Å ³), B_{sol} (Å ²)	0.29 , 45.2	EDS
L-test for twinning ²	$\langle L \rangle = 0.50$, $\langle L^2 \rangle = 0.33$	Xtriage
Estimated twinning fraction	0.029 for h,-k,-l	Xtriage
F_o, F_c correlation	0.81	EDS
Total number of atoms	4297	wwPDB-VP
Average B, all atoms (Å ²)	65.0	wwPDB-VP

Xtriage's analysis on translational NCS is as follows: *The analyses of the Patterson function reveals a significant off-origin peak that is 28.98 % of the origin peak, indicating pseudo translational symmetry. The chance of finding a peak of this or larger height randomly in a structure without pseudo translational symmetry is equal to 1.6770e-03. The detected translational NCS is most likely also responsible for the elevated intensity ratio.*

¹ Intensities estimated from amplitudes.

² Theoretical values of $\langle |L| \rangle$, $\langle L^2 \rangle$ for acentric reflections are 0.5, 0.333 respectively for untwinned datasets, and 0.375, 0.2 for perfectly twinned datasets.

5 Model quality

5.1 Standard geometry

Bond lengths and bond angles in the following residue types are not validated in this section: 72F

The Z score for a bond length (or angle) is the number of standard deviations the observed value is removed from the expected value. A bond length (or angle) with $|Z| > 5$ is considered an outlier worth inspection. RMSZ is the root-mean-square of all Z scores of the bond lengths (or angles).

Mol	Chain	Bond lengths		Bond angles	
		RMSZ	$\# Z > 5$	RMSZ	$\# Z > 5$
1	A	0.52	0/2126	0.72	0/2878
1	B	0.53	0/2126	0.72	0/2878
All	All	0.53	0/4252	0.72	0/5756

There are no bond length outliers.

There are no bond angle outliers.

There are no chirality outliers.

There are no planarity outliers.

5.2 Too-close contacts

In the following table, the Non-H and H(model) columns list the number of non-hydrogen atoms and hydrogen atoms in the chain respectively. The H(added) column lists the number of hydrogen atoms added and optimized by MolProbity. The Clashes column lists the number of clashes within the asymmetric unit, whereas Symm-Clashes lists symmetry related clashes.

Mol	Chain	Non-H	H(model)	H(added)	Clashes	Symm-Clashes
1	A	2072	0	2050	14	0
1	B	2072	0	2050	16	0
2	A	43	0	0	0	0
2	B	43	0	0	0	0
3	A	38	0	0	1	0
3	B	29	0	0	3	0
All	All	4297	0	4100	29	0

The all-atom clashscore is defined as the number of clashes found per 1000 atoms (including hydrogen atoms). The all-atom clashscore for this structure is 3.

All (29) close contacts within the same asymmetric unit are listed below, sorted by their clash

magnitude.

Atom-1	Atom-2	Interatomic distance (Å)	Clash overlap (Å)
1:B:480:ARG:HH22	1:B:501:LYS:HE3	1.57	0.68
1:B:353:GLU:OE2	3:B:701:HOH:O	2.17	0.60
1:B:515:PHE:O	3:B:702:HOH:O	2.17	0.59
1:A:297:LEU:HD23	1:A:334:ILE:HD12	1.85	0.58
1:B:297:LEU:HD23	1:B:334:ILE:HD12	1.86	0.56
1:A:350:LEU:HD21	1:A:455:LEU:HD23	1.91	0.52
1:A:363:LEU:HD13	1:A:455:LEU:O	2.11	0.50
1:B:360:LEU:HD23	1:B:520:PHE:CZ	2.46	0.50
1:B:350:LEU:HD21	1:B:455:LEU:HD23	1.93	0.50
1:B:346:LEU:HD22	1:B:392:ILE:HG21	1.94	0.50
1:B:363:LEU:HD13	1:B:455:LEU:O	2.12	0.49
1:A:360:LEU:HD23	1:A:520:PHE:CZ	2.48	0.49
1:B:364:VAL:HG13	1:B:516:LEU:HD22	1.95	0.48
1:A:346:LEU:HD22	1:A:392:ILE:HG21	1.95	0.48
1:A:364:VAL:HG13	1:A:516:LEU:HD22	1.96	0.48
1:B:349:PHE:CE2	1:B:358:LEU:HD11	2.48	0.47
1:A:349:PHE:CE2	1:A:358:LEU:HD11	2.49	0.47
1:A:486:GLU:HG3	1:A:533:LEU:HB2	1.96	0.47
1:A:427:LYS:O	3:A:701:HOH:O	2.20	0.46
1:A:394:VAL:HA	1:A:399:VAL:O	2.15	0.46
1:B:394:VAL:HA	1:B:399:VAL:O	2.16	0.46
1:B:514:ALA:N	3:B:706:HOH:O	2.48	0.45
1:B:474:GLN:HB3	1:B:479:TYR:HB3	1.98	0.45
1:A:474:GLN:HB3	1:A:479:TYR:HB3	2.00	0.43
1:A:323:VAL:HG21	1:A:393:LEU:HD12	2.01	0.42
1:B:396:GLU:O	1:B:399:VAL:HG23	2.20	0.42
1:A:396:GLU:O	1:A:399:VAL:HG23	2.21	0.41
1:A:460:ARG:HD3	1:B:514:ALA:HB1	2.03	0.41
1:B:323:VAL:HG21	1:B:393:LEU:HD12	2.03	0.40

There are no symmetry-related clashes.

5.3 Torsion angles ⓘ

5.3.1 Protein backbone ⓘ

In the following table, the Percentiles column shows the percent Ramachandran outliers of the chain as a percentile score with respect to all X-ray entries followed by that with respect to entries of similar resolution.

The Analysed column shows the number of residues for which the backbone conformation was analysed, and the total number of residues.

Mol	Chain	Analysed	Favoured	Allowed	Outliers	Percentiles	
1	A	255/286 (89%)	231 (91%)	21 (8%)	3 (1%)	15	44
1	B	255/286 (89%)	231 (91%)	21 (8%)	3 (1%)	15	44
All	All	510/572 (89%)	462 (91%)	42 (8%)	6 (1%)	15	44

All (6) Ramachandran outliers are listed below:

Mol	Chain	Res	Type
1	A	486	GLU
1	A	386	ASP
1	B	386	ASP
1	B	486	GLU
1	A	304	PRO
1	B	304	PRO

5.3.2 Protein sidechains ⓘ

In the following table, the Percentiles column shows the percent sidechain outliers of the chain as a percentile score with respect to all X-ray entries followed by that with respect to entries of similar resolution.

The Analysed column shows the number of residues for which the sidechain conformation was analysed, and the total number of residues.

Mol	Chain	Analysed	Rotameric	Outliers	Percentiles	
1	A	223/245 (91%)	216 (97%)	7 (3%)	45	79
1	B	223/245 (91%)	216 (97%)	7 (3%)	45	79
All	All	446/490 (91%)	432 (97%)	14 (3%)	44	79

All (14) residues with a non-rotameric sidechain are listed below:

Mol	Chain	Res	Type
1	A	281	CYS
1	A	348	ASP
1	A	429	THR
1	A	443	SER
1	A	473	ASP
1	A	491	LEU
1	A	501	LYS

Continued on next page...

Continued from previous page...

Mol	Chain	Res	Type
1	B	265	GLU
1	B	348	ASP
1	B	429	THR
1	B	443	SER
1	B	473	ASP
1	B	483	CYS
1	B	491	LEU

Some sidechains can be flipped to improve hydrogen bonding and reduce clashes. There are no such sidechains identified.

5.3.3 RNA [i](#)

There are no RNA molecules in this entry.

5.4 Non-standard residues in protein, DNA, RNA chains [i](#)

There are no non-standard protein/DNA/RNA residues in this entry.

5.5 Carbohydrates [i](#)

There are no carbohydrates in this entry.

5.6 Ligand geometry [i](#)

2 ligands are modelled in this entry.

In the following table, the Counts columns list the number of bonds (or angles) for which Mogul statistics could be retrieved, the number of bonds (or angles) that are observed in the model and the number of bonds (or angles) that are defined in the Chemical Component Dictionary. The Link column lists molecule types, if any, to which the group is linked. The Z score for a bond length (or angle) is the number of standard deviations the observed value is removed from the expected value. A bond length (or angle) with $|Z| > 2$ is considered an outlier worth inspection. RMSZ is the root-mean-square of all Z scores of the bond lengths (or angles).

Mol	Type	Chain	Res	Link	Bond lengths			Bond angles		
					Counts	RMSZ	$\# Z > 2$	Counts	RMSZ	$\# Z > 2$
2	72F	A	600	1	41,46,46	0.54	1 (2%)	50,65,65	0.61	1 (2%)
2	72F	B	600	1	41,46,46	0.65	1 (2%)	50,65,65	0.73	2 (4%)

In the following table, the Chirals column lists the number of chiral outliers, the number of chiral centers analysed, the number of these observed in the model and the number defined in the Chemical Component Dictionary. Similar counts are reported in the Torsion and Rings columns. '-' means no outliers of that kind were identified.

Mol	Type	Chain	Res	Link	Chirals	Torsions	Rings
2	72F	A	600	1	-	0/30/35/35	0/4/4/4
2	72F	B	600	1	-	1/30/35/35	0/4/4/4

All (2) bond length outliers are listed below:

Mol	Chain	Res	Type	Atoms	Z	Observed(Å)	Ideal(Å)
2	A	600	72F	C26-C25	2.10	1.53	1.50
2	B	600	72F	C26-C25	3.02	1.54	1.50

All (3) bond angle outliers are listed below:

Mol	Chain	Res	Type	Atoms	Z	Observed(°)	Ideal(°)
2	A	600	72F	C26-C25-C7	-2.64	125.95	130.41
2	B	600	72F	C26-C25-C7	-2.31	126.51	130.41
2	B	600	72F	C23-C10-C9	-2.07	117.51	120.59

There are no chirality outliers.

All (1) torsion outliers are listed below:

Mol	Chain	Res	Type	Atoms
2	B	600	72F	C26-C27-C28-N4

There are no ring outliers.

No monomer is involved in short contacts.

5.7 Other polymers

There are no such residues in this entry.

5.8 Polymer linkage issues

There are no chain breaks in this entry.

6 Fit of model and data ⓘ

6.1 Protein, DNA and RNA chains ⓘ

In the following table, the column labelled ‘#RSRZ> 2’ contains the number (and percentage) of RSRZ outliers, followed by percent RSRZ outliers for the chain as percentile scores relative to all X-ray entries and entries of similar resolution. The OWAB column contains the minimum, median, 95th percentile and maximum values of the occupancy-weighted average B-factor per residue. The column labelled ‘Q< 0.9’ lists the number of (and percentage) of residues with an average occupancy less than 0.9.

Mol	Chain	Analysed	<RSRZ>	#RSRZ>2	OWAB(Å ²)	Q<0.9
1	A	258/286 (90%)	0.37	22 (8%) 11 6	27, 55, 137, 205	0
1	B	258/286 (90%)	0.20	10 (3%) 40 29	28, 56, 116, 167	0
All	All	516/572 (90%)	0.28	32 (6%) 21 13	27, 55, 128, 205	0

All (32) RSRZ outliers are listed below:

Mol	Chain	Res	Type	RSRZ
1	A	302	MET	7.6
1	A	276	GLY	5.3
1	A	267	LEU	5.0
1	A	271	VAL	3.8
1	A	300	GLY	3.8
1	A	263	PRO	3.8
1	A	268	ARG	3.5
1	A	277	CYS	3.4
1	A	330	SER	3.2
1	A	272	LYS	3.2
1	A	289	THR	3.1
1	A	297	LEU	3.1
1	B	262	ILE	3.1
1	B	300	GLY	3.0
1	B	278	PHE	2.9
1	B	277	CYS	2.8
1	A	273	LEU	2.8
1	B	333	PRO	2.7
1	A	328	VAL	2.6
1	B	288	GLY	2.5
1	B	309	GLN	2.5
1	A	274	GLY	2.4
1	A	335	TYR	2.3
1	A	406	GLY	2.3

Continued on next page...

Continued from previous page...

Mol	Chain	Res	Type	RSRZ
1	B	271	VAL	2.3
1	A	299	PRO	2.3
1	A	286	TRP	2.2
1	A	262	ILE	2.1
1	B	276	GLY	2.1
1	A	265	GLU	2.1
1	A	312	GLN	2.0
1	B	272	LYS	2.0

6.2 Non-standard residues in protein, DNA, RNA chains [i](#)

There are no non-standard protein/DNA/RNA residues in this entry.

6.3 Carbohydrates [i](#)

There are no carbohydrates in this entry.

6.4 Ligands [i](#)

In the following table, the Atoms column lists the number of modelled atoms in the group and the number defined in the chemical component dictionary. LLDF column lists the quality of electron density of the group with respect to its neighbouring residues in protein, DNA or RNA chains. The B-factors column lists the minimum, median, 95th percentile and maximum values of B factors of atoms in the group. The column labelled 'Q< 0.9' lists the number of atoms with occupancy less than 0.9.

Mol	Type	Chain	Res	Atoms	RSCC	RSR	LLDF	B-factors(\AA^2)	Q<0.9
2	72F	B	600	43/43	0.83	0.28	0.76	57,74,95,97	0
2	72F	A	600	43/43	0.86	0.28	0.71	66,97,127,134	0

6.5 Other polymers [i](#)

There are no such residues in this entry.