



# Full wwPDB X-ray Structure Validation Report ⓘ

Feb 14, 2017 – 02:49 am GMT

PDB ID : 1T1S  
Title : Crystal Structure of the Reductoisomerase Complexed with a Bisphosphonate  
Authors : Yajima, S.; Hara, K.; Sanders, J.M.; Yin, F.; Ohsawa, K.; Wiesner, J.; Jomaa, H.; Oldfield, E.  
Deposited on : 2004-04-17  
Resolution : 2.40 Å(reported)

This is a Full wwPDB X-ray Structure Validation Report for a publicly released PDB entry.

We welcome your comments at [validation@mail.wwpdb.org](mailto:validation@mail.wwpdb.org)

A user guide is available at

<http://wwpdb.org/validation/2016/XrayValidationReportHelp>

with specific help available everywhere you see the ⓘ symbol.

---

The following versions of software and data (see [references ⓘ](#)) were used in the production of this report:

MolProbity : 4.02b-467  
Mogul : 1.7.2 (RC1), CSD as538be (2017)  
Xtriage (Phenix) : 1.9-1692  
EDS : trunk28620  
Percentile statistics : 20161228.v01 (using entries in the PDB archive December 28th 2016)  
Refmac : 5.8.0135  
CCP4 : 6.5.0  
Ideal geometry (proteins) : Engh & Huber (2001)  
Ideal geometry (DNA, RNA) : Parkinson et al. (1996)  
Validation Pipeline (wwPDB-VP) : recalc28949

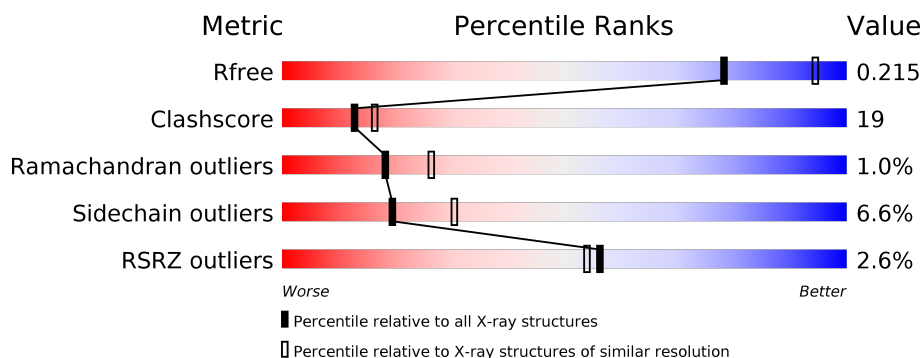
# 1 Overall quality at a glance

The following experimental techniques were used to determine the structure:

*X-RAY DIFFRACTION*

The reported resolution of this entry is 2.40 Å.

Percentile scores (ranging between 0-100) for global validation metrics of the entry are shown in the following graphic. The table shows the number of entries on which the scores are based.



Metric	Whole archive (#Entries)	Similar resolution (#Entries, resolution range(Å))
$R_{free}$	100719	3166 (2.40-2.40)
Clashscore	112137	3674 (2.40-2.40)
Ramachandran outliers	110173	3616 (2.40-2.40)
Sidechain outliers	110143	3617 (2.40-2.40)
RSRZ outliers	101464	3195 (2.40-2.40)

The table below summarises the geometric issues observed across the polymeric chains and their fit to the electron density. The red, orange, yellow and green segments on the lower bar indicate the fraction of residues that contain outliers for  $\geq 3$ , 2, 1 and 0 types of geometric quality criteria. A grey segment represents the fraction of residues that are not modelled. The numeric value for each fraction is indicated below the corresponding segment, with a dot representing fractions  $\leq 5\%$ . The upper red bar (where present) indicates the fraction of residues that have poor fit to the electron density. The numeric value is given above the bar.

Mol	Chain	Length	Quality of chain
1	A	398	<div> <div>3%</div> <div> <div></div> <div>64%</div> <div>32%</div> <div>.</div> </div> </div>
1	B	398	<div> <div>2%</div> <div> <div></div> <div>64%</div> <div>32%</div> <div>.</div> </div> </div>

The following table lists non-polymeric compounds, carbohydrate monomers and non-standard residues in protein, DNA, RNA chains that are outliers for geometric or electron-density-fit criteria:

Mol	Type	Chain	Res	Chirality	Geometry	Clashes	Electron density
3	MG	A	1002	-	-	-	X
4	CBQ	A	2001	-	-	-	X

## 2 Entry composition [i](#)

There are 5 unique types of molecules in this entry. The entry contains 6257 atoms, of which 0 are hydrogens and 0 are deuteriums.

In the tables below, the ZeroOcc column contains the number of atoms modelled with zero occupancy, the AltConf column contains the number of residues with at least one atom in alternate conformation and the Trace column contains the number of residues modelled with at most 2 atoms.

- Molecule 1 is a protein called 1-deoxy-D-xylulose 5-phosphate reductoisomerase.

Mol	Chain	Residues	Atoms					ZeroOcc	AltConf	Trace
1	A	398	Total	C	N	O	S	0	0	0
			3026	1889	534	577	26			
1	B	398	Total	C	N	O	S	0	0	0
			3026	1889	534	577	26			

There are 2 discrepancies between the modelled and reference sequences:

Chain	Residue	Modelled	Actual	Comment	Reference
A	0	GLY	-	CLONING ARTIFACT	UNP P45568
B	0	GLY	-	CLONING ARTIFACT	UNP P45568

- Molecule 2 is SULFATE ION (three-letter code: SO4) (formula: O<sub>4</sub>S).



Mol	Chain	Residues	Atoms		ZeroOcc	AltConf
2	A	1	Total	O S	0	0
			5	4 1		

*Continued on next page...*

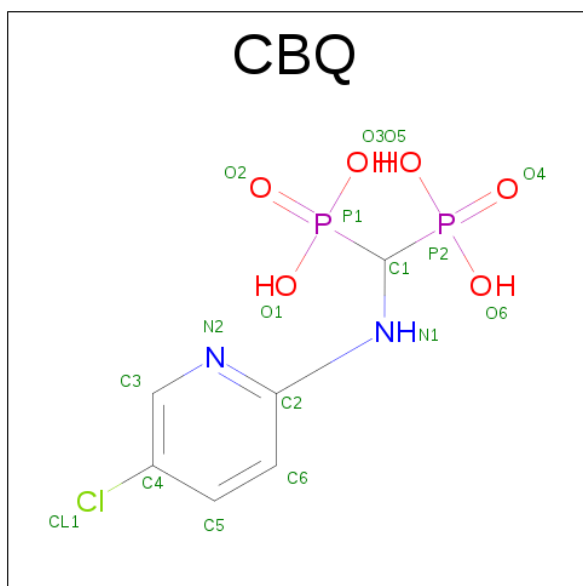
Continued from previous page...

Mol	Chain	Residues	Atoms			ZeroOcc	AltConf
2	B	1	Total	O	S	0	0
			5	4	1		

- Molecule 3 is MAGNESIUM ION (three-letter code: MG) (formula: Mg).

Mol	Chain	Residues	Atoms		ZeroOcc	AltConf
3	A	1	Total	Mg	0	0
			1	1		

- Molecule 4 is [(5-CHLORO-PYRIDIN-2-YLAMINO)-PHOSPHONO-METHYL]-PHOSPHONIC ACID (three-letter code: CBQ) (formula: C<sub>6</sub>H<sub>9</sub>ClN<sub>2</sub>O<sub>6</sub>P<sub>2</sub>).



Mol	Chain	Residues	Atoms						ZeroOcc	AltConf
4	A	1	Total	C	Cl	N	O	P	0	0
			17	6	1	2	6	2		
4	B	1	Total	C	Cl	N	O	P	0	0
			17	6	1	2	6	2		

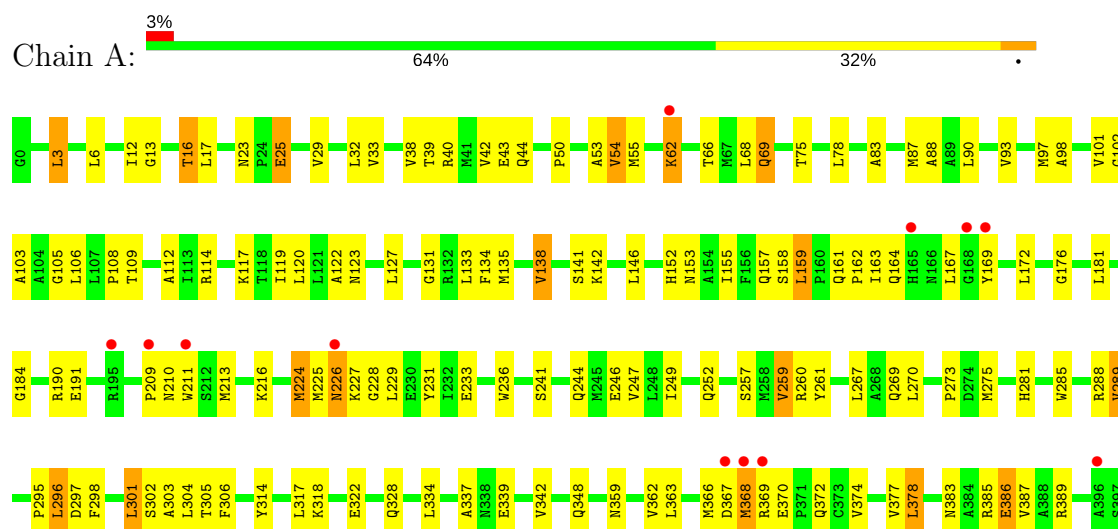
- Molecule 5 is water.

Mol	Chain	Residues	Atoms		ZeroOcc	AltConf
5	A	89	Total	O	0	0
			89	89		
5	B	71	Total	O	0	0
			71	71		

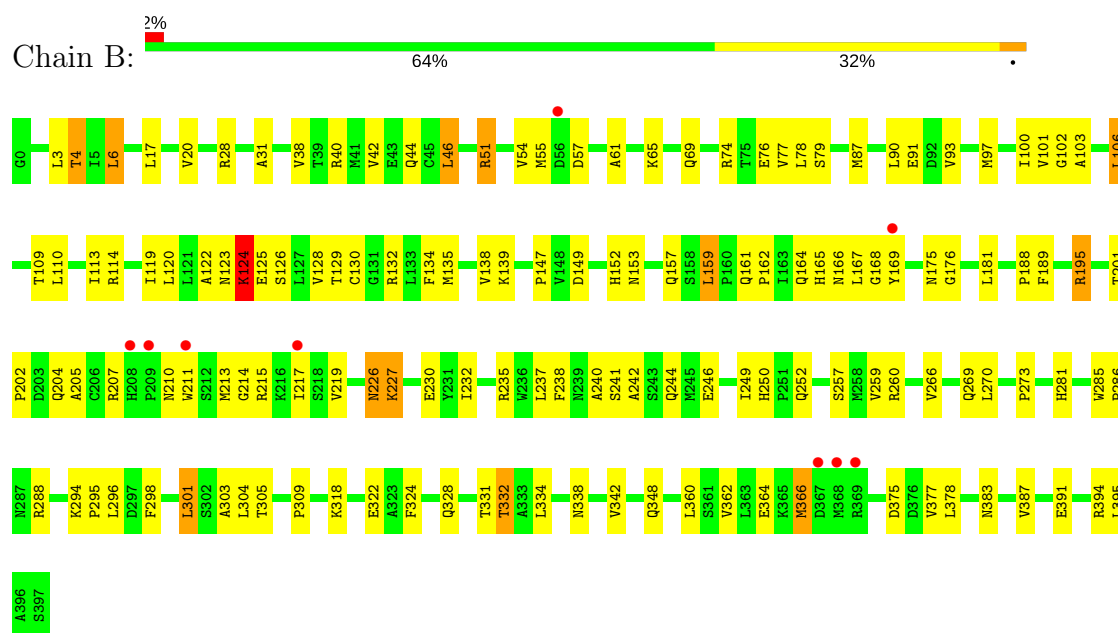
### 3 Residue-property plots [i](#)

These plots are drawn for all protein, RNA and DNA chains in the entry. The first graphic for a chain summarises the proportions of the various outlier classes displayed in the second graphic. The second graphic shows the sequence view annotated by issues in geometry and electron density. Residues are color-coded according to the number of geometric quality criteria for which they contain at least one outlier: green = 0, yellow = 1, orange = 2 and red = 3 or more. A red dot above a residue indicates a poor fit to the electron density ( $RSRZ > 2$ ). Stretches of 2 or more consecutive residues without any outlier are shown as a green connector. Residues present in the sample, but not in the model, are shown in grey.

- Molecule 1: 1-deoxy-D-xylulose 5-phosphate reductoisomerase



- Molecule 1: 1-deoxy-D-xylulose 5-phosphate reductoisomerase



## 4 Data and refinement statistics

Property	Value	Source
Space group	P 21 21 2	Depositor
Cell constants a, b, c, $\alpha$ , $\beta$ , $\gamma$	182.92Å 59.25Å 86.99Å 90.00° 90.00° 90.00°	Depositor
Resolution (Å)	50.00 – 2.40 49.93 – 2.40	Depositor EDS
% Data completeness (in resolution range)	(Not available) (50.00-2.40) 99.9 (49.93-2.40)	Depositor EDS
$R_{merge}$	(Not available)	Depositor
$R_{sym}$	(Not available)	Depositor
$\langle I/\sigma(I) \rangle$ <sup>1</sup>	4.24 (at 2.39Å)	Xtriage
Refinement program	CNS	Depositor
R, $R_{free}$	0.213 , 0.260 0.218 , 0.215	Depositor DCC
$R_{free}$ test set	3762 reflections (9.95%)	DCC
Wilson B-factor (Å <sup>2</sup> )	39.9	Xtriage
Anisotropy	0.392	Xtriage
Bulk solvent $k_{sol}$ (e/Å <sup>3</sup> ), $B_{sol}$ (Å <sup>2</sup> )	0.38 , 44.7	EDS
L-test for twinning <sup>2</sup>	$\langle  L  \rangle = 0.49$ , $\langle L^2 \rangle = 0.33$	Xtriage
Estimated twinning fraction	No twinning to report.	Xtriage
$F_o, F_c$ correlation	0.94	EDS
Total number of atoms	6257	wwPDB-VP
Average B, all atoms (Å <sup>2</sup> )	41.0	wwPDB-VP

Xtriage's analysis on translational NCS is as follows: *The largest off-origin peak in the Patterson function is 4.45% of the height of the origin peak. No significant pseudotranslation is detected.*

<sup>1</sup>Intensities estimated from amplitudes.

<sup>2</sup>Theoretical values of  $\langle |L| \rangle$ ,  $\langle L^2 \rangle$  for acentric reflections are 0.5, 0.333 respectively for untwinned datasets, and 0.375, 0.2 for perfectly twinned datasets.

## 5 Model quality

### 5.1 Standard geometry

Bond lengths and bond angles in the following residue types are not validated in this section: MG, CBQ, SO4

The Z score for a bond length (or angle) is the number of standard deviations the observed value is removed from the expected value. A bond length (or angle) with  $|Z| > 5$  is considered an outlier worth inspection. RMSZ is the root-mean-square of all Z scores of the bond lengths (or angles).

Mol	Chain	Bond lengths		Bond angles	
		RMSZ	# Z  >5	RMSZ	# Z  >5
1	A	0.34	0/3074	0.60	0/4166
1	B	0.33	0/3074	0.59	0/4166
All	All	0.34	0/6148	0.59	0/8332

There are no bond length outliers.

There are no bond angle outliers.

There are no chirality outliers.

There are no planarity outliers.

### 5.2 Too-close contacts

In the following table, the Non-H and H(model) columns list the number of non-hydrogen atoms and hydrogen atoms in the chain respectively. The H(added) column lists the number of hydrogen atoms added and optimized by MolProbity. The Clashes column lists the number of clashes within the asymmetric unit, whereas Symm-Clashes lists symmetry related clashes.

Mol	Chain	Non-H	H(model)	H(added)	Clashes	Symm-Clashes
1	A	3026	0	3049	115	0
1	B	3026	0	3049	122	0
2	A	5	0	0	0	0
2	B	5	0	0	0	0
3	A	1	0	0	0	0
4	A	17	0	5	1	0
4	B	17	0	5	2	0
5	A	89	0	0	4	0
5	B	71	0	0	2	0
All	All	6257	0	6108	226	0

The all-atom clashscore is defined as the number of clashes found per 1000 atoms (including



hydrogen atoms). The all-atom clashscore for this structure is 19.

All (226) close contacts within the same asymmetric unit are listed below, sorted by their clash magnitude.

Atom-1	Atom-2	Interatomic distance (Å)	Clash overlap (Å)
1:A:161:GLN:HE21	1:B:161:GLN:HE22	1.02	0.98
1:A:105:GLY:O	1:A:109:THR:HG23	1.69	0.92
1:B:201:THR:HG22	1:B:204:GLN:HG3	1.55	0.87
1:B:328:GLN:O	1:B:332:THR:HG23	1.74	0.86
1:B:241:SER:H	1:B:244:GLN:HE21	1.23	0.85
1:A:241:SER:H	1:A:244:GLN:HE21	1.26	0.84
1:A:161:GLN:NE2	1:B:161:GLN:HE22	1.77	0.82
1:B:4:THR:HG22	1:B:93:VAL:HG11	1.61	0.80
1:A:337:ALA:CB	1:A:362:VAL:HG21	2.12	0.79
1:A:33:VAL:HG22	1:A:54:VAL:HG13	1.65	0.79
1:A:12:ILE:O	1:A:16:THR:HG22	1.83	0.78
1:B:129:THR:HA	1:B:332:THR:HG22	1.64	0.77
1:A:296:LEU:HD11	1:B:266:VAL:HG21	1.65	0.77
1:B:159:LEU:HD13	1:B:259:VAL:HG21	1.67	0.77
1:B:65:LYS:HE2	1:B:77:VAL:HB	1.66	0.77
1:B:6:LEU:HB3	1:B:100:ILE:HG12	1.67	0.76
1:B:166:ASN:HA	1:B:169:TYR:CZ	2.20	0.75
1:B:201:THR:HG22	1:B:204:GLN:CG	2.18	0.74
1:A:252:GLN:HE22	1:A:305:THR:H	1.38	0.72
1:A:101:VAL:HG22	1:A:102:GLY:H	1.54	0.71
1:B:211:TRP:HE1	1:B:213:MET:HE3	1.54	0.71
1:A:303:ALA:HB1	1:B:303:ALA:HB1	1.73	0.69
1:B:4:THR:HG21	1:B:87:MET:O	1.93	0.69
1:B:153:ASN:HD21	1:B:157:GLN:HE21	1.40	0.69
1:A:101:VAL:HG22	1:A:102:GLY:N	2.08	0.69
1:B:383:ASN:O	1:B:387:VAL:HG23	1.94	0.68
1:A:337:ALA:HB2	1:A:362:VAL:HG21	1.74	0.68
1:A:374:VAL:O	1:A:377:VAL:HG22	1.93	0.67
1:A:164:GLN:NE2	1:A:285:TRP:HE1	1.93	0.67
1:A:161:GLN:HG3	1:B:161:GLN:NE2	2.09	0.67
1:B:201:THR:CG2	1:B:204:GLN:HG3	2.25	0.67
1:A:50:PRO:O	1:A:75:THR:HG22	1.95	0.66
1:A:298:PHE:HA	1:A:301:LEU:HD22	1.77	0.66
1:A:348:GLN:HA	5:A:2073:HOH:O	1.96	0.66
1:A:105:GLY:C	1:A:108:PRO:HD2	2.16	0.66
1:A:161:GLN:HE21	1:B:161:GLN:NE2	1.86	0.66
1:A:153:ASN:ND2	1:A:157:GLN:HE21	1.94	0.65
1:A:163:ILE:HD13	1:A:172:LEU:HD23	1.81	0.63

*Continued on next page...*

*Continued from previous page...*

Atom-1	Atom-2	Interatomic distance (Å)	Clash overlap (Å)
1:B:55:MET:O	1:B:79:SER:HA	1.98	0.63
1:B:366:MET:HE3	1:B:387:VAL:HG21	1.81	0.63
1:A:210:ASN:HB2	1:A:211:TRP:CE3	2.33	0.62
1:A:153:ASN:HD21	1:A:157:GLN:HE21	1.47	0.62
1:B:226:ASN:HD22	1:B:227:LYS:H	1.47	0.62
1:A:134:PHE:O	1:A:138:VAL:HG13	1.98	0.61
1:A:131:GLY:HA3	1:A:236:TRP:CD1	2.36	0.61
1:B:241:SER:H	1:B:244:GLN:NE2	1.96	0.61
1:B:375:ASP:HA	1:B:378:LEU:HD12	1.83	0.61
1:B:132:ARG:HB3	1:B:328:GLN:HE22	1.65	0.61
1:B:139:LYS:HG3	1:B:169:TYR:CG	2.35	0.61
1:A:252:GLN:NE2	1:A:305:THR:H	1.98	0.61
1:B:165:HIS:O	1:B:166:ASN:HB2	2.01	0.61
1:B:97:MET:HA	1:B:120:LEU:HB2	1.84	0.60
1:B:101:VAL:HG23	1:B:125:GLU:OE2	2.02	0.60
1:B:147:PRO:HB3	1:B:237:LEU:HD21	1.82	0.60
1:B:366:MET:CE	1:B:387:VAL:HG21	2.32	0.60
1:A:62:LYS:O	1:A:66:THR:HG22	2.01	0.59
1:B:61:ALA:HB2	1:B:79:SER:HB3	1.85	0.59
1:A:97:MET:HA	1:A:120:LEU:HB2	1.84	0.58
1:B:139:LYS:HE2	1:B:169:TYR:HB2	1.85	0.58
1:B:360:LEU:O	1:B:364:GLU:HG3	2.03	0.58
1:A:68:LEU:HD13	1:A:75:THR:OG1	2.04	0.58
1:A:226:ASN:HB2	5:A:2008:HOH:O	2.03	0.58
1:A:246:GLU:OE2	1:A:260:ARG:NH1	2.36	0.57
1:B:226:ASN:ND2	1:B:227:LYS:H	2.02	0.57
1:A:3:LEU:HD23	1:A:29:VAL:HA	1.87	0.57
1:B:103:ALA:HA	1:B:106:LEU:HD22	1.85	0.57
1:B:211:TRP:HE1	1:B:213:MET:CE	2.18	0.56
1:B:269:GLN:C	1:B:270:LEU:HD12	2.25	0.56
1:B:157:GLN:HG2	1:B:281:HIS:CE1	2.41	0.56
1:B:162:PRO:HB2	1:B:175:ASN:ND2	2.22	0.55
1:A:385:ARG:O	1:A:389:ARG:HG3	2.07	0.55
1:B:226:ASN:ND2	1:B:227:LYS:N	2.55	0.55
1:A:296:LEU:HD12	1:B:260:ARG:HH12	1.72	0.55
1:B:195:ARG:N	1:B:195:ARG:HD3	2.21	0.55
1:A:40:ARG:O	1:A:44:GLN:HG3	2.07	0.55
1:B:207:ARG:HH11	1:B:207:ARG:HG2	1.72	0.54
1:A:158:SER:HB2	1:A:259:VAL:CG1	2.37	0.54
1:B:69:GLN:HE21	1:B:74:ARG:HH22	1.56	0.54
1:A:133:LEU:H	1:A:328:GLN:HE22	1.56	0.54

*Continued on next page...*

*Continued from previous page...*

Atom-1	Atom-2	Interatomic distance (Å)	Clash overlap (Å)
1:B:391:GLU:HA	1:B:394:ARG:HG2	1.89	0.54
1:A:304:LEU:HB2	1:B:304:LEU:HB2	1.90	0.54
1:B:153:ASN:ND2	1:B:157:GLN:HE21	2.04	0.54
1:A:241:SER:H	1:A:244:GLN:NE2	1.99	0.54
1:A:141:SER:O	1:A:142:LYS:HB2	2.08	0.54
1:B:119:ILE:HD12	1:B:119:ILE:N	2.22	0.53
1:B:123:ASN:ND2	1:B:126:SER:HB3	2.22	0.53
1:B:109:THR:O	1:B:113:ILE:HG12	2.08	0.53
1:B:226:ASN:HD22	1:B:226:ASN:N	2.07	0.53
1:B:298:PHE:HA	1:B:301:LEU:HD22	1.91	0.53
1:B:362:VAL:O	1:B:366:MET:HG2	2.08	0.53
1:A:224:MET:HB2	1:A:314:TYR:CD2	2.44	0.52
1:B:201:THR:HG23	1:B:204:GLN:H	1.75	0.52
1:A:13:GLY:O	1:A:16:THR:HG23	2.10	0.52
1:A:23:ASN:ND2	1:A:289:VAL:HG22	2.24	0.52
1:B:164:GLN:NE2	1:B:285:TRP:HE1	2.07	0.52
1:A:318:LYS:O	1:A:322:GLU:HG3	2.10	0.52
1:B:132:ARG:HB3	1:B:328:GLN:NE2	2.25	0.52
1:B:318:LYS:O	1:B:322:GLU:HG3	2.09	0.52
1:B:54:VAL:HG22	1:B:78:LEU:HB2	1.92	0.52
1:A:176:GLY:HA3	1:B:288:ARG:HB2	1.91	0.52
1:A:288:ARG:HB2	1:B:176:GLY:HA3	1.91	0.52
1:B:40:ARG:O	1:B:44:GLN:HG3	2.09	0.52
1:A:97:MET:HE3	1:A:120:LEU:O	2.10	0.51
1:A:127:LEU:HD11	1:A:135:MET:HE3	1.92	0.51
1:A:337:ALA:HB1	1:A:362:VAL:HG21	1.92	0.51
1:A:297:ASP:O	1:A:301:LEU:HD13	2.11	0.50
1:A:216:LYS:HG2	1:A:342:VAL:HG11	1.93	0.50
1:A:97:MET:HE3	1:A:98:ALA:N	2.26	0.50
1:B:51:ARG:NH1	1:B:76:GLU:OE2	2.44	0.50
1:A:374:VAL:HG12	1:A:378:LEU:HD22	1.94	0.49
1:A:359:ASN:O	1:A:362:VAL:HG22	2.13	0.49
1:B:252:GLN:NE2	1:B:252:GLN:H	2.09	0.49
1:B:17:LEU:HA	1:B:20:VAL:HG13	1.95	0.49
1:A:281:HIS:HE1	5:A:2079:HOH:O	1.96	0.49
1:B:294:LYS:HE3	1:B:295:PRO:HD2	1.95	0.48
1:A:101:VAL:CG2	1:A:102:GLY:H	2.25	0.48
1:A:261:TYR:CE2	1:A:267:LEU:HD22	2.48	0.48
1:A:161:GLN:HB3	1:A:162:PRO:HD3	1.94	0.48
1:A:83:ALA:O	1:A:87:MET:HG2	2.13	0.48
1:B:252:GLN:NE2	1:B:305:THR:H	2.11	0.48

*Continued on next page...*

*Continued from previous page...*

Atom-1	Atom-2	Interatomic distance (Å)	Clash overlap (Å)
1:B:232:ILE:HD13	1:B:331:THR:HG22	1.96	0.48
1:A:260:ARG:NH2	1:B:296:LEU:O	2.47	0.48
1:A:90:LEU:O	1:A:117:LYS:HE3	2.13	0.48
1:B:201:THR:OG1	1:B:202:PRO:HD2	2.14	0.48
1:A:101:VAL:CG2	1:A:102:GLY:N	2.77	0.47
1:A:247:VAL:O	1:A:247:VAL:HG23	2.13	0.47
1:A:39:THR:O	1:A:43:GLU:HG2	2.13	0.47
1:B:285:TRP:CD1	1:B:286:PRO:HA	2.49	0.47
1:B:91:GLU:CD	1:B:91:GLU:H	2.16	0.47
1:B:135:MET:CE	1:B:168:GLY:HA3	2.44	0.47
1:B:69:GLN:HE21	1:B:74:ARG:NH2	2.13	0.47
1:A:88:ALA:HB1	1:A:112:ALA:HB2	1.96	0.47
1:A:184:GLY:HA3	1:A:227:LYS:HE3	1.96	0.47
1:B:348:GLN:HA	5:B:3052:HOH:O	2.13	0.47
1:A:161:GLN:HG3	1:B:161:GLN:HE22	1.78	0.47
1:A:386:GLU:OE1	1:A:386:GLU:HA	2.14	0.46
1:A:229:LEU:O	1:A:233:GLU:HG3	2.15	0.46
1:A:117:LYS:O	1:A:119:ILE:HD12	2.16	0.46
1:B:114:ARG:HH11	1:B:114:ARG:HG2	1.80	0.46
1:A:181:LEU:HD11	1:A:260:ARG:NH1	2.31	0.46
1:B:162:PRO:HB2	1:B:175:ASN:HD21	1.80	0.46
1:B:166:ASN:HA	1:B:169:TYR:OH	2.14	0.46
1:B:4:THR:HA	1:B:31:ALA:O	2.16	0.46
1:A:103:ALA:O	1:A:106:LEU:HB2	2.16	0.46
1:B:4:THR:HB	1:B:31:ALA:HB3	1.98	0.46
1:A:228:GLY:O	1:A:231:TYR:HB3	2.16	0.45
1:A:362:VAL:O	1:A:366:MET:HG2	2.15	0.45
1:A:38:VAL:O	1:A:42:VAL:HG23	2.17	0.45
1:A:167:LEU:C	1:A:169:TYR:H	2.19	0.45
1:A:367:ASP:O	1:A:368:MET:C	2.54	0.45
1:B:195:ARG:N	1:B:195:ARG:CD	2.80	0.45
1:B:97:MET:HE2	1:B:120:LEU:HD23	1.99	0.45
1:A:25:GLU:OE1	1:A:25:GLU:N	2.48	0.45
1:B:181:LEU:HD22	1:B:246:GLU:HB2	1.98	0.45
1:B:387:VAL:O	1:B:391:GLU:HG3	2.17	0.45
1:B:125:GLU:O	1:B:128:VAL:HB	2.17	0.44
1:B:273:PRO:HA	4:B:3001:CBQ:CL1	2.54	0.44
1:B:130:CYS:SG	1:B:377:VAL:HG21	2.57	0.44
1:B:129:THR:HG22	1:B:332:THR:HB	1.99	0.44
1:B:134:PHE:O	1:B:138:VAL:HG23	2.16	0.44
1:B:235:ARG:NH2	1:B:242:ALA:HB2	2.32	0.44

*Continued on next page...*

*Continued from previous page...*

Atom-1	Atom-2	Interatomic distance (Å)	Clash overlap (Å)
1:A:97:MET:HE1	1:A:122:ALA:HB2	1.99	0.44
1:A:152:HIS:CE1	1:A:233:GLU:HB2	2.53	0.44
1:A:367:ASP:O	1:A:369:ARG:HG2	2.18	0.44
1:B:65:LYS:HE3	1:B:65:LYS:HB2	1.81	0.44
1:A:249:ILE:O	1:A:306:PHE:HA	2.18	0.44
1:B:210:ASN:HB2	1:B:211:TRP:CE3	2.53	0.44
1:B:38:VAL:O	1:B:42:VAL:HG23	2.17	0.44
1:A:190:ARG:HD2	1:A:249:ILE:HG21	2.00	0.43
1:A:157:GLN:HG2	1:A:281:HIS:CE1	2.53	0.43
1:A:54:VAL:HA	1:A:78:LEU:O	2.18	0.43
1:A:97:MET:HE2	1:A:122:ALA:HB3	2.00	0.43
1:B:188:PRO:HB3	1:B:207:ARG:O	2.18	0.43
1:B:195:ARG:H	1:B:195:ARG:CD	2.30	0.43
1:B:270:LEU:HD12	1:B:270:LEU:N	2.32	0.43
1:A:225:MET:HE2	1:A:229:LEU:HG	2.00	0.43
1:A:273:PRO:HA	4:A:2001:CBQ:CL1	2.55	0.43
1:A:97:MET:CE	1:A:120:LEU:O	2.66	0.43
1:A:158:SER:HB2	1:A:259:VAL:HG12	2.01	0.43
1:A:69:GLN:HE21	1:A:69:GLN:C	2.22	0.43
1:B:106:LEU:HD12	1:B:106:LEU:HA	1.83	0.43
1:B:250:HIS:CE1	1:B:252:GLN:HE21	2.36	0.42
1:A:105:GLY:CA	1:A:108:PRO:HD2	2.50	0.42
1:B:235:ARG:HD3	1:B:240:ALA:O	2.19	0.42
1:A:275:MET:CE	1:A:275:MET:HA	2.49	0.42
1:B:122:ALA:C	1:B:124:LYS:H	2.22	0.42
1:B:152:HIS:HE1	1:B:230:GLU:O	2.02	0.42
1:B:395:LEU:C	1:B:395:LEU:HD13	2.39	0.42
1:A:296:LEU:N	1:A:296:LEU:HD12	2.34	0.42
1:A:3:LEU:O	1:A:3:LEU:HD23	2.20	0.42
1:B:189:PHE:CZ	1:B:205:ALA:HA	2.55	0.42
1:B:232:ILE:HG23	1:B:324:PHE:HD1	1.84	0.42
1:A:227:LYS:HD3	1:A:227:LYS:HA	1.88	0.42
1:B:28:ARG:HG3	1:B:28:ARG:HH11	1.85	0.42
1:A:155:ILE:HG22	1:A:159:LEU:HD22	2.01	0.42
1:B:214:GLY:H	1:B:217:ILE:HD11	1.85	0.42
1:A:377:VAL:CG2	1:A:378:LEU:N	2.82	0.42
1:A:90:LEU:HB2	1:A:93:VAL:CG2	2.49	0.42
1:B:227:LYS:HD3	1:B:227:LYS:HA	1.89	0.42
1:B:249:ILE:HG13	1:B:309:PRO:HG3	2.02	0.42
1:A:32:LEU:O	1:A:53:ALA:HA	2.19	0.42
1:A:90:LEU:HB2	1:A:93:VAL:HG23	2.02	0.41

*Continued on next page...*

Continued from previous page...

Atom-1	Atom-2	Interatomic distance (Å)	Clash overlap (Å)
1:B:123:ASN:HD21	1:B:126:SER:HB3	1.84	0.41
1:A:247:VAL:HG22	5:A:2054:HOH:O	2.19	0.41
1:B:159:LEU:HD12	1:B:159:LEU:HA	1.95	0.41
1:B:338:ASN:O	1:B:342:VAL:HG23	2.20	0.41
1:B:252:GLN:HE22	1:B:305:THR:H	1.67	0.41
1:B:42:VAL:HG12	1:B:46:LEU:HD22	2.01	0.41
1:B:167:LEU:HD11	1:B:238:PHE:CD2	2.55	0.41
1:B:101:VAL:HG22	1:B:102:GLY:N	2.36	0.41
1:B:201:THR:CG2	1:B:204:GLN:H	2.33	0.41
1:A:269:GLN:C	1:A:270:LEU:HD12	2.41	0.41
1:A:226:ASN:HD22	1:A:226:ASN:HA	1.57	0.41
1:A:362:VAL:HG23	1:A:363:LEU:N	2.36	0.41
1:A:38:VAL:HA	1:A:55:MET:HE2	2.03	0.41
1:A:383:ASN:O	1:A:387:VAL:HG23	2.21	0.40
1:A:211:TRP:HE1	1:A:213:MET:HE2	1.86	0.40
1:A:133:LEU:HG	1:A:328:GLN:HE22	1.86	0.40
1:B:161:GLN:HB3	1:B:162:PRO:HD3	2.02	0.40
1:B:215:ARG:O	1:B:219:VAL:HG23	2.22	0.40
1:A:295:PRO:HA	5:B:3011:HOH:O	2.21	0.40
1:A:29:VAL:HG11	1:A:32:LEU:HD21	2.03	0.40
1:A:339:GLU:CD	1:A:385:ARG:HH22	2.24	0.40
1:A:106:LEU:HA	1:A:106:LEU:HD12	1.91	0.40
1:B:226:ASN:HD22	1:B:227:LYS:N	2.12	0.40
4:B:3001:CBQ:H6	4:B:3001:CBQ:H1	1.95	0.40

There are no symmetry-related clashes.

## 5.3 Torsion angles [i](#)

### 5.3.1 Protein backbone [i](#)

In the following table, the Percentiles column shows the percent Ramachandran outliers of the chain as a percentile score with respect to all X-ray entries followed by that with respect to entries of similar resolution.

The Analysed column shows the number of residues for which the backbone conformation was analysed, and the total number of residues.

Mol	Chain	Analysed	Favoured	Allowed	Outliers	Percentiles
1	A	396/398 (100%)	382 (96%)	10 (2%)	4 (1%)	18 26

Continued on next page...

*Continued from previous page...*

Mol	Chain	Analysed	Favoured	Allowed	Outliers	Percentiles	
1	B	396/398 (100%)	377 (95%)	15 (4%)	4 (1%)	18	26
All	All	792/796 (100%)	759 (96%)	25 (3%)	8 (1%)	18	26

All (8) Ramachandran outliers are listed below:

Mol	Chain	Res	Type
1	A	257	SER
1	B	366	MET
1	A	368	MET
1	B	57	ASP
1	B	257	SER
1	A	370	GLU
1	B	124	LYS
1	A	209	PRO

### 5.3.2 Protein sidechains ⓘ

In the following table, the Percentiles column shows the percent sidechain outliers of the chain as a percentile score with respect to all X-ray entries followed by that with respect to entries of similar resolution.

The Analysed column shows the number of residues for which the sidechain conformation was analysed, and the total number of residues.

Mol	Chain	Analysed	Rotameric	Outliers	Percentiles	
1	A	327/327 (100%)	301 (92%)	26 (8%)	14	21
1	B	327/327 (100%)	310 (95%)	17 (5%)	27	43
All	All	654/654 (100%)	611 (93%)	43 (7%)	19	30

All (43) residues with a non-rotameric sidechain are listed below:

Mol	Chain	Res	Type
1	A	3	LEU
1	A	6	LEU
1	A	16	THR
1	A	17	LEU
1	A	25	GLU
1	A	54	VAL
1	A	62	LYS
1	A	69	GLN

*Continued on next page...*

*Continued from previous page...*

Mol	Chain	Res	Type
1	A	114	ARG
1	A	123	ASN
1	A	138	VAL
1	A	146	LEU
1	A	159	LEU
1	A	191	GLU
1	A	224	MET
1	A	226	ASN
1	A	259	VAL
1	A	289	VAL
1	A	296	LEU
1	A	301	LEU
1	A	302	SER
1	A	317	LEU
1	A	334	LEU
1	A	372	GLN
1	A	378	LEU
1	A	386	GLU
1	B	3	LEU
1	B	4	THR
1	B	6	LEU
1	B	46	LEU
1	B	51	ARG
1	B	90	LEU
1	B	106	LEU
1	B	110	LEU
1	B	124	LYS
1	B	149	ASP
1	B	159	LEU
1	B	195	ARG
1	B	226	ASN
1	B	227	LYS
1	B	301	LEU
1	B	332	THR
1	B	334	LEU

Some sidechains can be flipped to improve hydrogen bonding and reduce clashes. All (33) such sidechains are listed below:

Mol	Chain	Res	Type
1	A	23	ASN
1	A	69	GLN
1	A	95	GLN

*Continued on next page...*



*Continued from previous page...*

Mol	Chain	Res	Type
1	A	153	ASN
1	A	164	GLN
1	A	175	ASN
1	A	210	ASN
1	A	226	ASN
1	A	244	GLN
1	A	252	GLN
1	A	256	HIS
1	A	281	HIS
1	A	328	GLN
1	A	349	GLN
1	B	2	GLN
1	B	69	GLN
1	B	71	GLN
1	B	82	GLN
1	B	123	ASN
1	B	144	GLN
1	B	152	HIS
1	B	153	ASN
1	B	161	GLN
1	B	164	GLN
1	B	166	ASN
1	B	175	ASN
1	B	226	ASN
1	B	244	GLN
1	B	252	GLN
1	B	256	HIS
1	B	262	GLN
1	B	281	HIS
1	B	328	GLN

### 5.3.3 RNA ⓘ

There are no RNA molecules in this entry.

## 5.4 Non-standard residues in protein, DNA, RNA chains ⓘ

There are no non-standard protein/DNA/RNA residues in this entry.

## 5.5 Carbohydrates [i](#)

There are no carbohydrates in this entry.

## 5.6 Ligand geometry [i](#)

Of 5 ligands modelled in this entry, 1 is monoatomic - leaving 4 for Mogul analysis.

In the following table, the Counts columns list the number of bonds (or angles) for which Mogul statistics could be retrieved, the number of bonds (or angles) that are observed in the model and the number of bonds (or angles) that are defined in the chemical component dictionary. The Link column lists molecule types, if any, to which the group is linked. The Z score for a bond length (or angle) is the number of standard deviations the observed value is removed from the expected value. A bond length (or angle) with  $|Z| > 2$  is considered an outlier worth inspection. RMSZ is the root-mean-square of all Z scores of the bond lengths (or angles).

Mol	Type	Chain	Res	Link	Bond lengths			Bond angles		
					Counts	RMSZ	# $ Z  > 2$	Counts	RMSZ	# $ Z  > 2$
2	SO4	A	1001	-	4,4,4	0.23	0	6,6,6	0.07	0
4	CBQ	A	2001	3	17,17,17	1.89	5 (29%)	23,26,26	1.91	9 (39%)
2	SO4	B	1002	-	4,4,4	0.23	0	6,6,6	0.12	0
4	CBQ	B	3001	-	17,17,17	1.90	5 (29%)	23,26,26	1.93	9 (39%)

In the following table, the Chirals column lists the number of chiral outliers, the number of chiral centers analysed, the number of these observed in the model and the number defined in the chemical component dictionary. Similar counts are reported in the Torsion and Rings columns. '-' means no outliers of that kind were identified.

Mol	Type	Chain	Res	Link	Chirals	Torsions	Rings
2	SO4	A	1001	-	-	0/0/0/0	0/0/0/0
4	CBQ	A	2001	3	-	0/16/16/16	0/1/1/1
2	SO4	B	1002	-	-	0/0/0/0	0/0/0/0
4	CBQ	B	3001	-	-	0/16/16/16	0/1/1/1

All (10) bond length outliers are listed below:

Mol	Chain	Res	Type	Atoms	Z	Observed(Å)	Ideal(Å)
4	A	2001	CBQ	P2-O5	-5.36	1.45	1.54
4	B	3001	CBQ	P2-O5	-5.15	1.46	1.54
4	A	2001	CBQ	P1-O2	-2.40	1.45	1.49
4	B	3001	CBQ	P1-O2	-2.19	1.46	1.49
4	A	2001	CBQ	C3-N2	2.19	1.39	1.34
4	B	3001	CBQ	C3-N2	2.25	1.39	1.34
4	A	2001	CBQ	P2-O4	3.00	1.55	1.49

*Continued on next page...*

*Continued from previous page...*

Mol	Chain	Res	Type	Atoms	Z	Observed(Å)	Ideal(Å)
4	A	2001	CBQ	C2-N2	3.03	1.40	1.34
4	B	3001	CBQ	C2-N2	3.10	1.40	1.34
4	B	3001	CBQ	P2-O4	3.22	1.55	1.49

All (18) bond angle outliers are listed below:

Mol	Chain	Res	Type	Atoms	Z	Observed(°)	Ideal(°)
4	B	3001	CBQ	O3-P1-O2	-3.79	103.78	113.41
4	A	2001	CBQ	O3-P1-O2	-3.43	104.70	113.41
4	A	2001	CBQ	P2-C1-P1	-3.04	110.98	116.24
4	B	3001	CBQ	P2-C1-P1	-3.00	111.05	116.24
4	A	2001	CBQ	C4-C3-N2	-2.63	118.28	122.22
4	B	3001	CBQ	C4-C3-N2	-2.58	118.35	122.22
4	B	3001	CBQ	O1-P1-C1	2.04	109.82	104.77
4	A	2001	CBQ	O1-P1-C1	2.06	109.87	104.77
4	A	2001	CBQ	O5-P2-C1	2.32	110.51	104.77
4	B	3001	CBQ	O6-P2-C1	2.36	110.62	104.77
4	A	2001	CBQ	O6-P2-C1	2.41	110.73	104.77
4	A	2001	CBQ	O3-P1-C1	2.43	110.78	104.77
4	B	3001	CBQ	O5-P2-C1	2.52	111.02	104.77
4	B	3001	CBQ	O3-P1-C1	2.54	111.06	104.77
4	B	3001	CBQ	C3-N2-C2	3.07	121.10	117.91
4	A	2001	CBQ	C3-N2-C2	3.24	121.28	117.91
4	A	2001	CBQ	C5-C4-C3	3.26	121.98	119.57
4	B	3001	CBQ	C5-C4-C3	3.32	122.02	119.57

There are no chirality outliers.

There are no torsion outliers.

There are no ring outliers.

2 monomers are involved in 3 short contacts:

Mol	Chain	Res	Type	Clashes	Symm-Clashes
4	A	2001	CBQ	1	0
4	B	3001	CBQ	2	0

## 5.7 Other polymers [i](#)

There are no such residues in this entry.

## 5.8 Polymer linkage issues ⓘ

There are no chain breaks in this entry.

## 6 Fit of model and data

### 6.1 Protein, DNA and RNA chains

In the following table, the column labelled ‘#RSRZ > 2’ contains the number (and percentage) of RSRZ outliers, followed by percent RSRZ outliers for the chain as percentile scores relative to all X-ray entries and entries of similar resolution. The OWAB column contains the minimum, median, 95<sup>th</sup> percentile and maximum values of the occupancy-weighted average B-factor per residue. The column labelled ‘Q < 0.9’ lists the number of (and percentage) of residues with an average occupancy less than 0.9.

Mol	Chain	Analysed	<RSRZ>	#RSRZ>2	OWAB(Å <sup>2</sup> )	Q<0.9
1	A	398/398 (100%)	0.23	12 (3%) 51 49	25, 37, 63, 83	0
1	B	398/398 (100%)	0.18	9 (2%) 61 58	27, 40, 64, 84	0
All	All	796/796 (100%)	0.21	21 (2%) 56 54	25, 39, 63, 84	0

All (21) RSRZ outliers are listed below:

Mol	Chain	Res	Type	RSRZ
1	A	368	MET	8.2
1	A	209	PRO	4.8
1	A	367	ASP	4.3
1	A	211	TRP	3.9
1	B	209	PRO	3.7
1	B	211	TRP	3.5
1	A	169	TYR	3.5
1	B	217	ILE	3.0
1	B	56	ASP	2.8
1	B	368	MET	2.7
1	A	168	GLY	2.6
1	A	226	ASN	2.5
1	B	369	ARG	2.3
1	A	396	ALA	2.2
1	B	208	HIS	2.2
1	A	62	LYS	2.2
1	B	367	ASP	2.2
1	A	195	ARG	2.1
1	A	369	ARG	2.1
1	A	165	HIS	2.1
1	B	169	TYR	2.1

## 6.2 Non-standard residues in protein, DNA, RNA chains [i](#)

There are no non-standard protein/DNA/RNA residues in this entry.

## 6.3 Carbohydrates [i](#)

There are no carbohydrates in this entry.

## 6.4 Ligands [i](#)

In the following table, the Atoms column lists the number of modelled atoms in the group and the number defined in the chemical component dictionary. LLDF column lists the quality of electron density of the group with respect to its neighbouring residues in protein, DNA or RNA chains. The B-factors column lists the minimum, median, 95<sup>th</sup> percentile and maximum values of B factors of atoms in the group. The column labelled 'Q< 0.9' lists the number of atoms with occupancy less than 0.9.

Mol	Type	Chain	Res	Atoms	RSCC	RSR	LLDF	B-factors( $\text{\AA}^2$ )	Q<0.9
3	MG	A	1002	1/1	0.82	0.28	4.44	49,49,49,49	0
4	CBQ	A	2001	17/17	0.77	0.34	2.39	33,34,40,41	17
4	CBQ	B	3001	17/17	0.82	0.26	0.83	36,39,42,42	17
2	SO4	B	1002	5/5	0.98	0.16	-0.45	43,43,45,46	0
2	SO4	A	1001	5/5	0.99	0.16	-0.50	38,40,40,40	0

## 6.5 Other polymers [i](#)

There are no such residues in this entry.