



Full wwPDB X-ray Structure Validation Report ⓘ

Aug 22, 2017 – 05:38 AM EDT

PDB ID : 5T1Z
Title : Estrogen Receptor Alpha Ligand Binding Domain Y537S Mutant in Complex with Ethoxytriphenylethylene and GRIP Peptide
Authors : Fanning, S.W.; Rajan, S.S.; Maximov, P.Y.; Abderrahman, B.H.; Surojeet, S.; Fernandes, D.J.; Fan, P.; Curpan, R.F.; Greene, G.L.; Jordan, V.C.
Deposited on : unknown
Resolution : 2.10 Å(reported)

This is a Full wwPDB X-ray Structure Validation Report for a publicly released PDB entry.

We welcome your comments at validation@mail.wwpdb.org

A user guide is available at

<http://wwpdb.org/validation/2016/XrayValidationReportHelp>

with specific help available everywhere you see the ⓘ symbol.

The following versions of software and data (see [references ⓘ](#)) were used in the production of this report:

MolProbity	:	4.02b-467
Mogul	:	1.7.2 (RC1), CSD as538be (2017)
Xtriage (Phenix)	:	1.9-1692
EDS	:	rb-20029824
Percentile statistics	:	20161228.v01 (using entries in the PDB archive December 28th 2016)
Refmac	:	5.8.0135
CCP4	:	6.5.0
Ideal geometry (proteins)	:	Engh & Huber (2001)
Ideal geometry (DNA, RNA)	:	Parkinson et al. (1996)
Validation Pipeline (wwPDB-VP)	:	rb-20029824

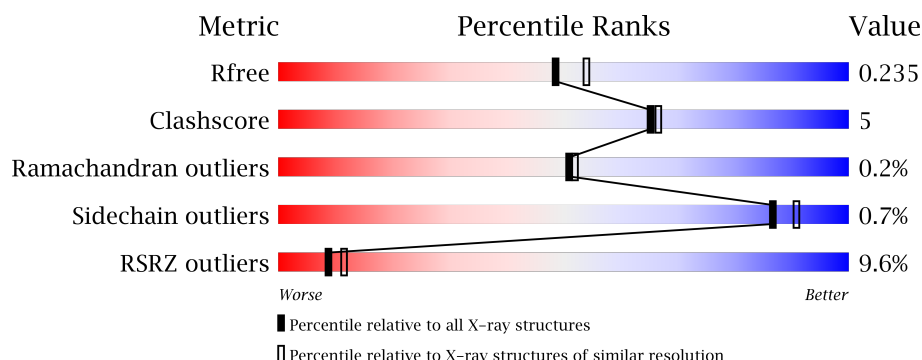
1 Overall quality at a glance

The following experimental techniques were used to determine the structure:

X-RAY DIFFRACTION

The reported resolution of this entry is 2.10 Å.

Percentile scores (ranging between 0-100) for global validation metrics of the entry are shown in the following graphic. The table shows the number of entries on which the scores are based.



Metric	Whole archive (#Entries)	Similar resolution (#Entries, resolution range(Å))
R_{free}	100719	4243 (2.10-2.10)
Clashscore	112137	4788 (2.10-2.10)
Ramachandran outliers	110173	4740 (2.10-2.10)
Sidechain outliers	110143	4741 (2.10-2.10)
RSRZ outliers	101464	4275 (2.10-2.10)

The table below summarises the geometric issues observed across the polymeric chains and their fit to the electron density. The red, orange, yellow and green segments on the lower bar indicate the fraction of residues that contain outliers for ≥ 3 , 2, 1 and 0 types of geometric quality criteria. A grey segment represents the fraction of residues that are not modelled. The numeric value for each fraction is indicated below the corresponding segment, with a dot representing fractions $\leq 5\%$. The upper red bar (where present) indicates the fraction of residues that have poor fit to the electron density. The numeric value is given above the bar.

Mol	Chain	Length	Quality of chain
1	A	250	<div> <div>5%</div> <div>89%</div> <div>7%</div> <div>•</div> </div>
1	B	250	<div> <div>12%</div> <div>80%</div> <div>14%</div> <div>• 5%</div> </div>
2	C	13	<div> <div>8%</div> <div>77%</div> <div>23%</div> </div>
2	D	13	<div> <div>31%</div> <div>77%</div> <div>23%</div> </div>

2 Entry composition

There are 4 unique types of molecules in this entry. The entry contains 4197 atoms, of which 0 are hydrogens and 0 are deuteriums.

In the tables below, the ZeroOcc column contains the number of atoms modelled with zero occupancy, the AltConf column contains the number of residues with at least one atom in alternate conformation and the Trace column contains the number of residues modelled with at most 2 atoms.

- Molecule 1 is a protein called Estrogen receptor.

Mol	Chain	Residues	Atoms					ZeroOcc	AltConf	Trace
1	A	240	Total	C	N	O	S	0	6	0
			1945	1243	333	349	20			
1	B	238	Total	C	N	O	S	0	0	0
			1856	1185	319	333	19			

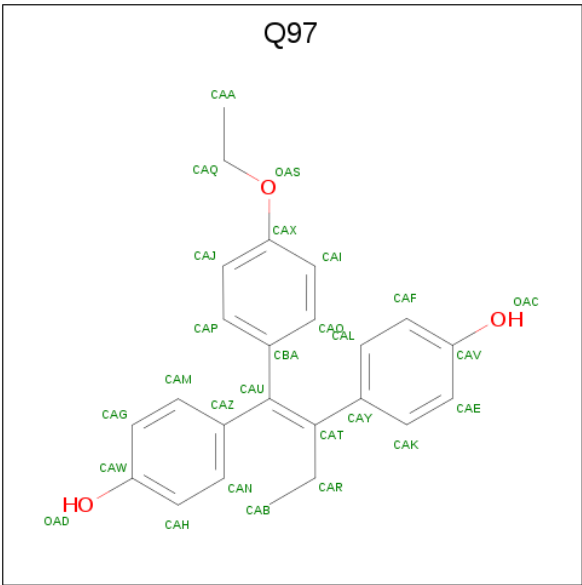
There are 4 discrepancies between the modelled and reference sequences:

Chain	Residue	Modelled	Actual	Comment	Reference
A	381	MET	CYS	conflict	UNP P03372
A	537	SER	TYR	engineered mutation	UNP P03372
B	381	MET	CYS	conflict	UNP P03372
B	537	SER	TYR	engineered mutation	UNP P03372

- Molecule 2 is a protein called Nuclear receptor coactivator 2.

Mol	Chain	Residues	Atoms				ZeroOcc	AltConf	Trace
2	C	10	Total	C	N	O	0	0	0
			86	56	19	11			
2	D	13	Total	C	N	O	0	1	0
			113	71	25	17			

- Molecule 3 is 4,4'-[(1Z)-1-(4-ethoxyphenyl)but-1-ene-1,2-diyl]diphenol (three-letter code: Q97) (formula: C₂₄H₂₄O₃).



Mol	Chain	Residues	Atoms			ZeroOcc	AltConf
3	A	1	Total	C	O	0	0
			27	24	3		
3	B	1	Total	C	O	0	0
			27	24	3		

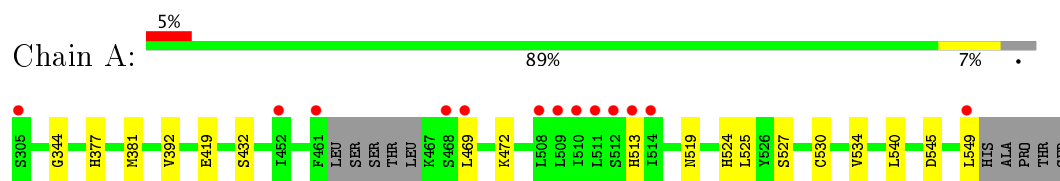
- Molecule 4 is water.

Mol	Chain	Residues	Atoms		ZeroOcc	AltConf
4	A	83	Total	O	0	0
			83	83		
4	B	57	Total	O	0	0
			57	57		
4	C	1	Total	O	0	0
			1	1		
4	D	2	Total	O	0	0
			2	2		

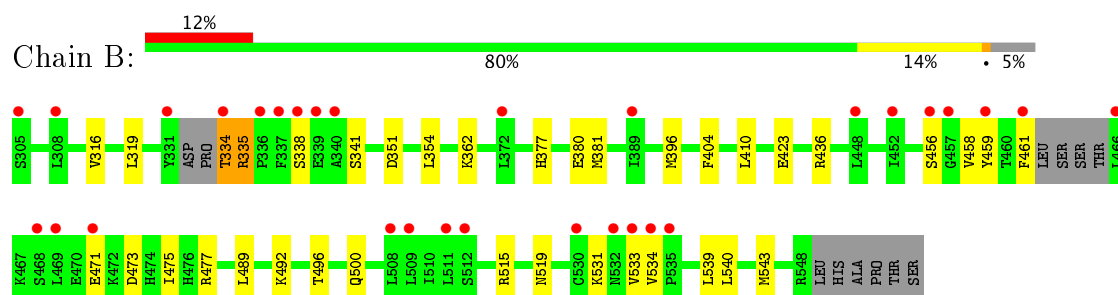
3 Residue-property plots [i](#)

These plots are drawn for all protein, RNA and DNA chains in the entry. The first graphic for a chain summarises the proportions of the various outlier classes displayed in the second graphic. The second graphic shows the sequence view annotated by issues in geometry and electron density. Residues are color-coded according to the number of geometric quality criteria for which they contain at least one outlier: green = 0, yellow = 1, orange = 2 and red = 3 or more. A red dot above a residue indicates a poor fit to the electron density ($RSRZ > 2$). Stretches of 2 or more consecutive residues without any outlier are shown as a green connector. Residues present in the sample, but not in the model, are shown in grey.

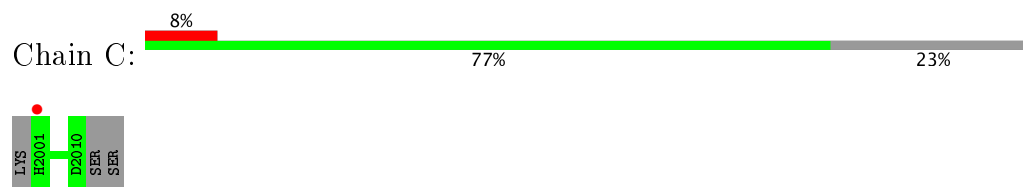
• Molecule 1: Estrogen receptor



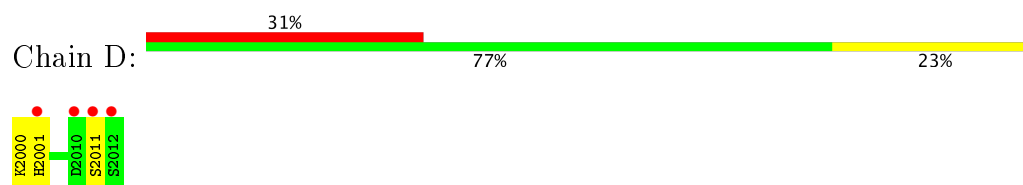
• Molecule 1: Estrogen receptor



• Molecule 2: Nuclear receptor coactivator 2



• Molecule 2: Nuclear receptor coactivator 2



4 Data and refinement statistics

Property	Value	Source
Space group	P 1 21 1	Depositor
Cell constants a, b, c, α , β , γ	56.09Å 84.21Å 58.97Å 90.00° 108.28° 90.00°	Depositor
Resolution (Å)	33.65 – 2.10 33.65 – 2.10	Depositor EDS
% Data completeness (in resolution range)	92.6 (33.65-2.10) 85.1 (33.65-2.10)	Depositor EDS
R_{merge}	(Not available)	Depositor
R_{sym}	(Not available)	Depositor
$\langle I/\sigma(I) \rangle$ ¹	2.14 (at 2.10Å)	Xtriage
Refinement program	PHENIX 1.9_1692	Depositor
R, R_{free}	0.182 , 0.246 0.177 , 0.235	Depositor DCC
R_{free} test set	1318 reflections (5.11%)	DCC
Wilson B-factor (Å ²)	34.1	Xtriage
Anisotropy	0.104	Xtriage
Bulk solvent k_{sol} (e/Å ³), B_{sol} (Å ²)	0.31 , 45.3	EDS
L-test for twinning ²	$\langle L \rangle = 0.50$, $\langle L^2 \rangle = 0.33$	Xtriage
Estimated twinning fraction	No twinning to report.	Xtriage
F_o, F_c correlation	0.95	EDS
Total number of atoms	4197	wwPDB-VP
Average B, all atoms (Å ²)	46.0	wwPDB-VP

Xtriage's analysis on translational NCS is as follows: *The largest off-origin peak in the Patterson function is 7.09% of the height of the origin peak. No significant pseudotranslation is detected.*

¹Intensities estimated from amplitudes.

²Theoretical values of $\langle |L| \rangle$, $\langle L^2 \rangle$ for acentric reflections are 0.5, 0.333 respectively for untwinned datasets, and 0.375, 0.2 for perfectly twinned datasets.

5 Model quality [i](#)

5.1 Standard geometry [i](#)

Bond lengths and bond angles in the following residue types are not validated in this section: Q97

The Z score for a bond length (or angle) is the number of standard deviations the observed value is removed from the expected value. A bond length (or angle) with $|Z| > 5$ is considered an outlier worth inspection. RMSZ is the root-mean-square of all Z scores of the bond lengths (or angles).

Mol	Chain	Bond lengths		Bond angles	
		RMSZ	$\# Z > 5$	RMSZ	$\# Z > 5$
1	A	0.43	0/1984	0.55	0/2680
1	B	0.39	0/1887	0.52	0/2550
2	C	0.36	0/87	0.46	0/115
2	D	0.27	0/117	0.43	0/155
All	All	0.41	0/4075	0.53	0/5500

There are no bond length outliers.

There are no bond angle outliers.

There are no chirality outliers.

There are no planarity outliers.

5.2 Too-close contacts [i](#)

In the following table, the Non-H and H(model) columns list the number of non-hydrogen atoms and hydrogen atoms in the chain respectively. The H(added) column lists the number of hydrogen atoms added and optimized by MolProbity. The Clashes column lists the number of clashes within the asymmetric unit, whereas Symm-Clashes lists symmetry related clashes.

Mol	Chain	Non-H	H(model)	H(added)	Clashes	Symm-Clashes
1	A	1945	0	1962	15	0
1	B	1856	0	1862	25	0
2	C	86	0	93	0	0
2	D	113	0	117	2	0
3	A	27	0	24	4	0
3	B	27	0	24	2	0
4	A	83	0	0	0	0
4	B	57	0	0	3	0
4	C	1	0	0	0	0

Continued on next page...

Continued from previous page...

Mol	Chain	Non-H	H(model)	H(added)	Clashes	Symm-Clashes
4	D	2	0	0	0	0
All	All	4197	0	4082	38	0

The all-atom clashscore is defined as the number of clashes found per 1000 atoms (including hydrogen atoms). The all-atom clashscore for this structure is 5.

All (38) close contacts within the same asymmetric unit are listed below, sorted by their clash magnitude.

Atom-1	Atom-2	Interatomic distance (Å)	Clash overlap (Å)
1:B:473:ASP:OD1	1:B:477:ARG:NH1	2.18	0.73
1:B:540:LEU:HD13	3:B:1000:Q97:HAQ	1.77	0.66
1:B:334:THR:N	4:B:1102:HOH:O	2.28	0.65
1:B:533:VAL:HG13	1:B:534:VAL:H	1.61	0.65
1:B:540:LEU:HD22	3:B:1000:Q97:HAA	1.79	0.65
1:A:525:LEU:HD13	3:A:601:Q97:HAQA	1.79	0.63
1:A:524[B]:HIS:ND1	3:A:601:Q97:OAC	2.30	0.63
1:B:362:LYS:HD3	2:D:2011:SER:OG	1.98	0.63
1:A:419:GLU:O	1:A:524[B]:HIS:NE2	2.33	0.61
1:A:519:ASN:HB2	1:B:519:ASN:HD22	1.67	0.60
2:D:2000:LYS:O	2:D:2001:HIS:ND1	2.38	0.57
1:B:380:GLU:C	1:B:381:MET:N	2.58	0.56
1:A:513[B]:HIS:CG	1:B:459:TYR:HD2	2.25	0.55
1:B:377:HIS:CD2	1:B:461:PHE:HE1	2.26	0.54
1:B:335:ARG:NE	4:B:1101:HOH:O	2.25	0.52
1:A:392:VAL:HG13	1:A:432:SER:HA	1.93	0.51
1:B:456:SER:HA	1:B:515:ARG:NH2	2.26	0.51
1:B:354:LEU:HD21	1:B:543:MET:HG3	1.93	0.50
1:B:404:PHE:CE1	1:B:410:LEU:HD12	2.47	0.49
1:A:527:SER:O	1:A:530:CYS:N	2.46	0.49
1:B:471:GLU:O	1:B:475:ILE:HG13	2.14	0.48
1:A:549:LEU:HD11	1:B:423:GLU:HG2	1.96	0.48
1:A:540:LEU:HD13	3:A:601:Q97:HAAA	1.96	0.48
1:A:377:HIS:O	1:A:381[B]:MET:HG2	2.13	0.47
1:B:316:VAL:HG21	1:B:489:LEU:HD21	1.95	0.47
1:B:351:ASP:HB2	1:B:540:LEU:HD11	1.95	0.47
1:B:473:ASP:CG	1:B:477:ARG:HH12	2.13	0.47
1:B:539:LEU:O	1:B:543:MET:HG2	2.16	0.46
1:A:540:LEU:HB3	3:A:601:Q97:HAAA	2.00	0.44
1:B:338:SER:H	1:B:341:SER:HB3	1.82	0.44
1:B:319:LEU:HA	1:B:319:LEU:HD23	1.87	0.43
1:A:469:LEU:HD23	1:A:472:LYS:HE2	2.01	0.42

Continued on next page...

Continued from previous page...

Atom-1	Atom-2	Interatomic distance (Å)	Clash overlap (Å)
1:B:492:LYS:NZ	4:B:1108:HOH:O	2.50	0.42
1:B:396:MET:O	1:B:436:ARG:HD3	2.21	0.41
1:A:545:ASP:C	1:A:545:ASP:OD1	2.58	0.41
1:B:496:THR:O	1:B:500:GLN:HG3	2.21	0.41
1:A:540:LEU:HA	1:A:540:LEU:HD23	1.90	0.41
1:A:344:GLY:HA2	1:A:534:VAL:HG21	2.03	0.40

There are no symmetry-related clashes.

5.3 Torsion angles [i](#)

5.3.1 Protein backbone [i](#)

In the following table, the Percentiles column shows the percent Ramachandran outliers of the chain as a percentile score with respect to all X-ray entries followed by that with respect to entries of similar resolution.

The Analysed column shows the number of residues for which the backbone conformation was analysed, and the total number of residues.

Mol	Chain	Analysed	Favoured	Allowed	Outliers	Percentiles	
1	A	240/250 (96%)	236 (98%)	4 (2%)	0	100	100
1	B	230/250 (92%)	223 (97%)	6 (3%)	1 (0%)	38	35
2	C	8/13 (62%)	8 (100%)	0	0	100	100
2	D	12/13 (92%)	11 (92%)	1 (8%)	0	100	100
All	All	490/526 (93%)	478 (98%)	11 (2%)	1 (0%)	51	52

All (1) Ramachandran outliers are listed below:

Mol	Chain	Res	Type
1	B	531	LYS

5.3.2 Protein sidechains [i](#)

In the following table, the Percentiles column shows the percent sidechain outliers of the chain as a percentile score with respect to all X-ray entries followed by that with respect to entries of similar resolution.

The Analysed column shows the number of residues for which the sidechain conformation was

analysed, and the total number of residues.

Mol	Chain	Analysed	Rotameric	Outliers	Percentiles	
1	A	217/225 (96%)	217 (100%)	0	100	100
1	B	203/225 (90%)	200 (98%)	3 (2%)	70	76
2	C	9/13 (69%)	9 (100%)	0	100	100
2	D	12/13 (92%)	12 (100%)	0	100	100
All	All	441/476 (93%)	438 (99%)	3 (1%)	87	91

All (3) residues with a non-rotameric sidechain are listed below:

Mol	Chain	Res	Type
1	B	334	THR
1	B	335	ARG
1	B	458	VAL

Some sidechains can be flipped to improve hydrogen bonding and reduce clashes. All (1) such sidechains are listed below:

Mol	Chain	Res	Type
1	B	519	ASN

5.3.3 RNA ⓘ

There are no RNA molecules in this entry.

5.4 Non-standard residues in protein, DNA, RNA chains ⓘ

There are no non-standard protein/DNA/RNA residues in this entry.

5.5 Carbohydrates ⓘ

There are no carbohydrates in this entry.

5.6 Ligand geometry ⓘ

2 ligands are modelled in this entry.

In the following table, the Counts columns list the number of bonds (or angles) for which Mogul statistics could be retrieved, the number of bonds (or angles) that are observed in the model and

the number of bonds (or angles) that are defined in the chemical component dictionary. The Link column lists molecule types, if any, to which the group is linked. The Z score for a bond length (or angle) is the number of standard deviations the observed value is removed from the expected value. A bond length (or angle) with $|Z| > 2$ is considered an outlier worth inspection. RMSZ is the root-mean-square of all Z scores of the bond lengths (or angles).

Mol	Type	Chain	Res	Link	Bond lengths			Bond angles		
					Counts	RMSZ	# Z > 2	Counts	RMSZ	# Z > 2
3	Q97	A	601	-	29,29,29	1.42	6 (20%)	39,39,39	1.51	8 (20%)
3	Q97	B	1000	-	29,29,29	1.38	7 (24%)	39,39,39	1.53	7 (17%)

In the following table, the Chirals column lists the number of chiral outliers, the number of chiral centers analysed, the number of these observed in the model and the number defined in the chemical component dictionary. Similar counts are reported in the Torsion and Rings columns. '-' means no outliers of that kind were identified.

Mol	Type	Chain	Res	Link	Chirals	Torsions	Rings
3	Q97	A	601	-	-	0/21/21/21	0/3/3/3
3	Q97	B	1000	-	-	0/21/21/21	0/3/3/3

All (13) bond length outliers are listed below:

Mol	Chain	Res	Type	Atoms	Z	Observed(Å)	Ideal(Å)
3	B	1000	Q97	CAP-CAJ	2.05	1.42	1.38
3	A	601	Q97	CAK-CAY	2.16	1.42	1.39
3	B	1000	Q97	CBA-CAU	2.23	1.53	1.49
3	A	601	Q97	CAF-CAV	2.30	1.43	1.38
3	B	1000	Q97	CAF-CAV	2.35	1.43	1.38
3	B	1000	Q97	CAL-CAF	2.46	1.43	1.38
3	A	601	Q97	CAZ-CAU	2.46	1.53	1.49
3	B	1000	Q97	CAK-CAE	2.50	1.43	1.38
3	A	601	Q97	CAY-CAT	2.53	1.54	1.49
3	B	1000	Q97	CAK-CAY	2.59	1.43	1.39
3	A	601	Q97	CBA-CAU	2.67	1.53	1.49
3	A	601	Q97	CAL-CAF	2.75	1.43	1.38
3	B	1000	Q97	CAY-CAT	2.91	1.55	1.49

All (15) bond angle outliers are listed below:

Mol	Chain	Res	Type	Atoms	Z	Observed(°)	Ideal(°)
3	A	601	Q97	CAK-CAY-CAT	-3.66	115.97	121.01
3	A	601	Q97	CAP-CBA-CAU	-3.28	116.14	120.91
3	B	1000	Q97	CBA-CAU-CAZ	-3.02	109.68	115.59
3	A	601	Q97	CBA-CAU-CAZ	-2.86	110.01	115.59

Continued on next page...

Continued from previous page...

Mol	Chain	Res	Type	Atoms	Z	Observed(°)	Ideal(°)
3	A	601	Q97	CAR-CAT-CAY	-2.27	111.07	114.34
3	B	1000	Q97	CAY-CAT-CAU	-2.27	119.69	122.43
3	B	1000	Q97	CAK-CAY-CAT	-2.22	117.95	121.01
3	B	1000	Q97	CAQ-OAS-CAX	-2.21	111.84	117.93
3	B	1000	Q97	CAM-CAZ-CAU	-2.08	117.88	120.91
3	A	601	Q97	CAL-CAY-CAT	2.12	123.93	121.01
3	A	601	Q97	CAR-CAT-CAU	2.81	126.62	123.38
3	A	601	Q97	CAB-CAR-CAT	2.91	117.56	112.93
3	A	601	Q97	CAZ-CAU-CAT	3.76	127.70	122.88
3	B	1000	Q97	CAR-CAT-CAU	4.18	128.21	123.38
3	B	1000	Q97	CAZ-CAU-CAT	5.31	129.68	122.88

There are no chirality outliers.

There are no torsion outliers.

There are no ring outliers.

2 monomers are involved in 6 short contacts:

Mol	Chain	Res	Type	Clashes	Symm-Clashes
3	A	601	Q97	4	0
3	B	1000	Q97	2	0

5.7 Other polymers [i](#)

There are no such residues in this entry.

5.8 Polymer linkage issues [i](#)

The following chains have linkage breaks:

Mol	Chain	Number of breaks
1	B	1
1	A	1

All chain breaks are listed below:

Model	Chain	Residue-1	Atom-1	Residue-2	Atom-2	Distance (Å)
1	A	529:LYS	C	530:CYS	N	2.77
1	B	380:GLU	C	381:MET	N	2.58

6 Fit of model and data ⓘ

6.1 Protein, DNA and RNA chains ⓘ

In the following table, the column labelled ‘#RSRZ> 2’ contains the number (and percentage) of RSRZ outliers, followed by percent RSRZ outliers for the chain as percentile scores relative to all X-ray entries and entries of similar resolution. The OWAB column contains the minimum, median, 95th percentile and maximum values of the occupancy-weighted average B-factor per residue. The column labelled ‘Q< 0.9’ lists the number of (and percentage) of residues with an average occupancy less than 0.9.

Mol	Chain	Analysed	<RSRZ>	#RSRZ>2	OWAB(Å ²)	Q<0.9
1	A	240/250 (96%)	0.08	13 (5%) 26 33	23, 40, 64, 93	2 (0%)
1	B	238/250 (95%)	0.47	30 (12%) 4 6	27, 47, 92, 116	0
2	C	10/13 (76%)	-0.03	1 (10%) 8 10	32, 45, 71, 82	0
2	D	13/13 (100%)	1.14	4 (30%) 0 1	50, 67, 95, 97	0
All	All	501/526 (95%)	0.29	48 (9%) 9 11	23, 43, 85, 116	2 (0%)

All (48) RSRZ outliers are listed below:

Mol	Chain	Res	Type	RSRZ
1	B	461	PHE	7.4
1	B	456	SER	4.1
1	B	459	TYR	3.9
1	B	533	VAL	3.8
1	B	466	LEU	3.6
1	A	469	LEU	3.4
1	B	508	LEU	3.3
2	D	2011	SER	3.3
1	A	549	LEU	3.2
1	A	468	SER	3.2
2	D	2010	ASP	3.1
1	B	331	TYR	3.1
1	B	532	ASN	3.1
1	B	468	SER	3.1
1	B	511	LEU	3.0
1	B	534	VAL	3.0
1	B	336	PRO	3.0
1	A	514	ILE	3.0
1	A	511	LEU	2.9
1	A	305	SER	2.9
2	D	2012	SER	2.9

Continued on next page...

Continued from previous page...

Mol	Chain	Res	Type	RSRZ
1	A	512	SER	2.9
2	C	2001	HIS	2.8
1	B	535	PRO	2.8
1	B	334	THR	2.8
1	B	452	ILE	2.7
1	B	509	LEU	2.7
1	B	340	ALA	2.7
1	A	509	LEU	2.7
1	B	372	LEU	2.7
1	A	513[A]	HIS	2.6
1	B	530	CYS	2.6
1	B	457	GLY	2.6
1	A	461	PHE	2.5
1	B	469	LEU	2.5
1	B	337	PHE	2.5
1	B	308	LEU	2.4
1	A	452	ILE	2.4
1	B	512	SER	2.4
1	B	448	LEU	2.4
1	B	389	ILE	2.3
1	A	510	ILE	2.3
1	B	471	GLU	2.3
1	B	338	SER	2.2
1	A	508	LEU	2.2
2	D	2001	HIS	2.1
1	B	339	GLU	2.0
1	B	305	SER	2.0

6.2 Non-standard residues in protein, DNA, RNA chains [i](#)

There are no non-standard protein/DNA/RNA residues in this entry.

6.3 Carbohydrates [i](#)

There are no carbohydrates in this entry.

6.4 Ligands [i](#)

In the following table, the Atoms column lists the number of modelled atoms in the group and the number defined in the chemical component dictionary. LLDF column lists the quality of electron density of the group with respect to its neighbouring residues in protein, DNA or RNA chains.

The B-factors column lists the minimum, median, 95th percentile and maximum values of B factors of atoms in the group. The column labelled 'Q< 0.9' lists the number of atoms with occupancy less than 0.9.

Mol	Type	Chain	Res	Atoms	RSCC	RSR	LLDF	B-factors(\AA^2)	Q<0.9
3	Q97	B	1000	27/27	0.96	0.14	0.30	34,46,58,76	0
3	Q97	A	601	27/27	0.95	0.13	0.18	28,38,48,58	1

6.5 Other polymers [i](#)

There are no such residues in this entry.