



Full wwPDB X-ray Structure Validation Report ⓘ

Feb 12, 2017 – 09:25 pm GMT

PDB ID : 1T31
Title : A Dual Inhibitor of the Leukocyte Proteases Cathepsin G and Chymase with Therapeutic Efficacy in Animals Models of Inflammation
Authors : de Garavilla, L.; Greco, M.N.; Giardino, E.C.; Wells, G.I.; Haertlein, B.J.; Kauffman, J.A.; Corcoran, T.W.; Derian, C.K.; Eckardt, A.J.; Abraham, W.M.; Sukumar, N.; Chen, Z.; Pineda, A.O.; Mathews, F.S.; Di Cera, E.; Andrade-Gordon, P.; Damiano, B.P.; Maryanoff, B.E.; Pereira, P.J.B.; Wang, Z.M.; Rubin, H.; Huber, R.; Bode, W.; Schechter, N.M.; Strobl, S.
Deposited on : 2004-04-23
Resolution : 1.90 Å(reported)

This is a Full wwPDB X-ray Structure Validation Report for a publicly released PDB entry.

We welcome your comments at validation@mail.wwpdb.org

A user guide is available at

<http://wwpdb.org/validation/2016/XrayValidationReportHelp>
with specific help available everywhere you see the ⓘ symbol.

The following versions of software and data (see [references ⓘ](#)) were used in the production of this report:

MolProbity	:	4.02b-467
Mogul	:	1.7.2 (RC1), CSD as538be (2017)
Xtriage (Phenix)	:	1.9-1692
EDS	:	trunk28620
Percentile statistics	:	20161228.v01 (using entries in the PDB archive December 28th 2016)
Refmac	:	5.8.0135
CCP4	:	6.5.0
Ideal geometry (proteins)	:	Engh & Huber (2001)
Ideal geometry (DNA, RNA)	:	Parkinson et al. (1996)
Validation Pipeline (wwPDB-VP)	:	recalc28949

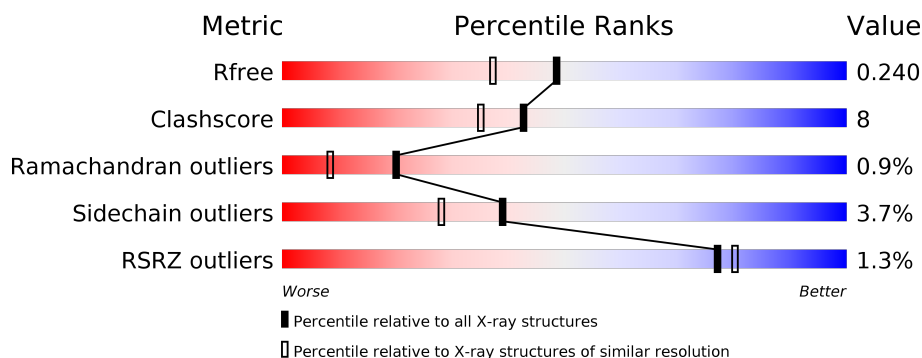
1 Overall quality at a glance

The following experimental techniques were used to determine the structure:

X-RAY DIFFRACTION

The reported resolution of this entry is 1.90 Å.

Percentile scores (ranging between 0-100) for global validation metrics of the entry are shown in the following graphic. The table shows the number of entries on which the scores are based.



Metric	Whole archive (#Entries)	Similar resolution (#Entries, resolution range(Å))
R_{free}	100719	5047 (1.90-1.90)
Clashscore	112137	5731 (1.90-1.90)
Ramachandran outliers	110173	5669 (1.90-1.90)
Sidechain outliers	110143	5670 (1.90-1.90)
RSRZ outliers	101464	5100 (1.90-1.90)

The table below summarises the geometric issues observed across the polymeric chains and their fit to the electron density. The red, orange, yellow and green segments on the lower bar indicate the fraction of residues that contain outliers for ≥ 3 , 2, 1 and 0 types of geometric quality criteria. A grey segment represents the fraction of residues that are not modelled. The numeric value for each fraction is indicated below the corresponding segment, with a dot representing fractions $\leq 5\%$. The upper red bar (where present) indicates the fraction of residues that have poor fit to the electron density. The numeric value is given above the bar.

Mol	Chain	Length	Quality of chain
1	A	226	<div> <div style="width: 100%; height: 10px; position: relative;"> <div style="position: absolute; left: 0; top: -10px; font-size: 8px;">%</div> <div style="position: absolute; left: 0; top: 0; width: 100%; height: 100%; background: linear-gradient(to right, red 0%, red 1%, orange 1%, orange 14%, yellow 14%, yellow 83%, green 83%, green 100%);"></div> <div style="position: absolute; left: 50%; top: 5px;">83%</div> <div style="position: absolute; left: 90%; top: 5px;">14%</div> <div style="position: absolute; left: 98%; top: 5px;">•</div> </div> </div>

The following table lists non-polymeric compounds, carbohydrate monomers and non-standard residues in protein, DNA, RNA chains that are outliers for geometric or electron-density-fit criteria:

Mol	Type	Chain	Res	Chirality	Geometry	Clashes	Electron density
2	NAG	A	301	-	-	-	X
4	SO4	A	904	-	-	-	X

Continued on next page...

Continued from previous page...

Mol	Type	Chain	Res	Chirality	Geometry	Clashes	Electron density
7	MES	A	910	-	-	-	X

2 Entry composition

There are 8 unique types of molecules in this entry. The entry contains 2113 atoms, of which 0 are hydrogens and 0 are deuteriums.

In the tables below, the ZeroOcc column contains the number of atoms modelled with zero occupancy, the AltConf column contains the number of residues with at least one atom in alternate conformation and the Trace column contains the number of residues modelled with at most 2 atoms.

- Molecule 1 is a protein called Chymase.

Mol	Chain	Residues	Atoms					ZeroOcc	AltConf	Trace
1	A	226	Total	C	N	O	S	0	0	0
			1755	1112	320	312	11			

There are 3 discrepancies between the modelled and reference sequences:

Chain	Residue	Modelled	Actual	Comment	Reference
A	129	PHE	LYS	engineered	UNP P23946
A	208	ALA	VAL	ENGINEERED	UNP P23946
A	235	GLN	ARG	engineered	UNP P23946

- Molecule 2 is a polymer of unknown type called SUGAR (2-MER).

Mol	Chain	Residues	Atoms				ZeroOcc	AltConf
2	A	2	Total	C	N	O	0	0
			28	16	2	10		

- Molecule 3 is SUGAR (N-ACETYL-D-GLUCOSAMINE) (three-letter code: NAG) (formula: $C_8H_{15}NO_6$).



Mol	Chain	Residues	Atoms				ZeroOcc	AltConf
3	A	1	Total	C	N	O	0	0
			14	8	1	5		

- Molecule 4 is SULFATE ION (three-letter code: SO4) (formula: O₄S).



Mol	Chain	Residues	Atoms			ZeroOcc	AltConf
4	A	1	Total	O	S	0	0
			5	4	1		
4	A	1	Total	O	S	0	0
			5	4	1		
4	A	1	Total	O	S	0	0
			5	4	1		

Continued on next page...

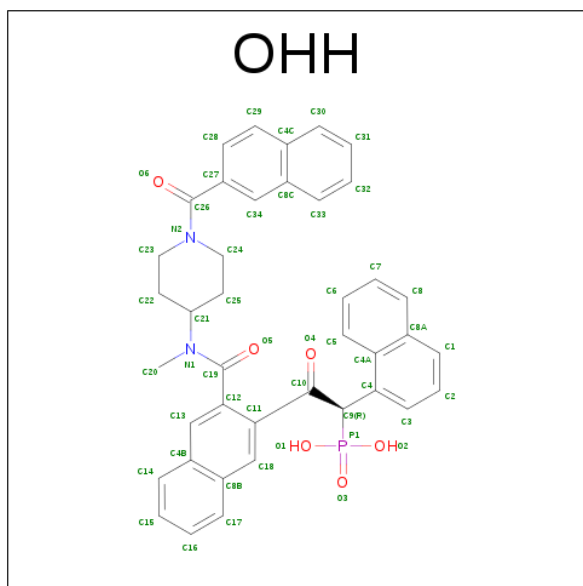
Continued from previous page...

Mol	Chain	Residues	Atoms			ZeroOcc	AltConf
4	A	1	Total	O	S	0	0
			5	4	1		
4	A	1	Total	O	S	0	0
			5	4	1		
4	A	1	Total	O	S	0	0
			5	4	1		
4	A	1	Total	O	S	0	0
			5	4	1		

- Molecule 5 is COBALT (II) ION (three-letter code: CO) (formula: Co).

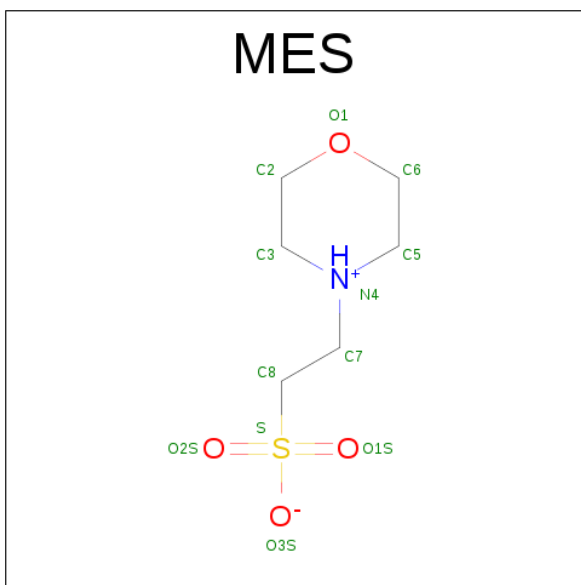
Mol	Chain	Residues	Atoms		ZeroOcc	AltConf
5	A	1	Total	Co	0	0
			1	1		

- Molecule 6 is 2-[3-({METHYL[1-(2-NAPHTHOYL)PIPERIDIN-4-YL]AMINO}CARBONYL)-2-NAPHTHYL]-1-(1-NAPHTHYL)-2-OXOETHYLPHOSPHONIC ACID (three-letter code: OHH) (formula: C₄₀H₃₅N₂O₆P).



Mol	Chain	Residues	Atoms					ZeroOcc	AltConf
6	A	1	Total	C	N	O	P	0	0
			49	40	2	6	1		

- Molecule 7 is 2-(N-MORPHOLINO)-ETHANESULFONIC ACID (three-letter code: MES) (formula: C₆H₁₃NO₄S).



Mol	Chain	Residues	Atoms					ZeroOcc	AltConf
7	A	1	Total	C	N	O	S	0	0
			12	6	1	4	1		

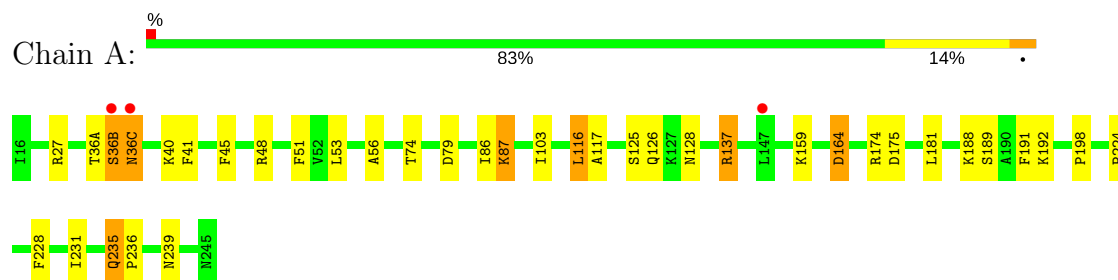
- Molecule 8 is water.

Mol	Chain	Residues	Atoms		ZeroOcc	AltConf
8	A	219	Total	O	0	0
			219	219		

3 Residue-property plots

These plots are drawn for all protein, RNA and DNA chains in the entry. The first graphic for a chain summarises the proportions of the various outlier classes displayed in the second graphic. The second graphic shows the sequence view annotated by issues in geometry and electron density. Residues are color-coded according to the number of geometric quality criteria for which they contain at least one outlier: green = 0, yellow = 1, orange = 2 and red = 3 or more. A red dot above a residue indicates a poor fit to the electron density ($\text{RSRZ} > 2$). Stretches of 2 or more consecutive residues without any outlier are shown as a green connector. Residues present in the sample, but not in the model, are shown in grey.

• Molecule 1: Chymase



4 Data and refinement statistics

Property	Value	Source
Space group	P 21 21 2	Depositor
Cell constants a, b, c, α , β , γ	46.42Å 131.73Å 49.22Å 90.00° 90.00° 90.00°	Depositor
Resolution (Å)	40.00 – 1.90 20.00 – 1.85	Depositor EDS
% Data completeness (in resolution range)	80.0 (40.00-1.90) 76.9 (20.00-1.85)	Depositor EDS
R_{merge}	0.07	Depositor
R_{sym}	(Not available)	Depositor
$\langle I/\sigma(I) \rangle$ ¹	3.67 (at 1.85Å)	Xtriage
Refinement program	CNS	Depositor
R, R_{free}	0.198 , 0.234 0.202 , 0.240	Depositor DCC
R_{free} test set	948 reflections (5.07%)	DCC
Wilson B-factor (Å ²)	19.7	Xtriage
Anisotropy	0.907	Xtriage
Bulk solvent k_{sol} (e/Å ³), B_{sol} (Å ²)	0.35 , 57.1	EDS
L-test for twinning ²	$\langle L \rangle = 0.48$, $\langle L^2 \rangle = 0.31$	Xtriage
Estimated twinning fraction	No twinning to report.	Xtriage
F_o, F_c correlation	0.94	EDS
Total number of atoms	2113	wwPDB-VP
Average B, all atoms (Å ²)	31.0	wwPDB-VP

Xtriage's analysis on translational NCS is as follows: *The largest off-origin peak in the Patterson function is 6.42% of the height of the origin peak. No significant pseudotranslation is detected.*

¹Intensities estimated from amplitudes.

²Theoretical values of $\langle |L| \rangle$, $\langle L^2 \rangle$ for acentric reflections are 0.5, 0.333 respectively for untwinned datasets, and 0.375, 0.2 for perfectly twinned datasets.

5 Model quality [i](#)

5.1 Standard geometry [i](#)

Bond lengths and bond angles in the following residue types are not validated in this section: CO, OHH, NAG, MES, SO4

The Z score for a bond length (or angle) is the number of standard deviations the observed value is removed from the expected value. A bond length (or angle) with $|Z| > 5$ is considered an outlier worth inspection. RMSZ is the root-mean-square of all Z scores of the bond lengths (or angles).

Mol	Chain	Bond lengths		Bond angles	
		RMSZ	$\# Z > 5$	RMSZ	$\# Z > 5$
1	A	0.32	0/1799	0.64	0/2434

There are no bond length outliers.

There are no bond angle outliers.

There are no chirality outliers.

There are no planarity outliers.

5.2 Too-close contacts [i](#)

In the following table, the Non-H and H(model) columns list the number of non-hydrogen atoms and hydrogen atoms in the chain respectively. The H(added) column lists the number of hydrogen atoms added and optimized by MolProbity. The Clashes column lists the number of clashes within the asymmetric unit, whereas Symm-Clashes lists symmetry related clashes.

Mol	Chain	Non-H	H(model)	H(added)	Clashes	Symm-Clashes
1	A	1755	0	1758	28	0
2	A	28	0	25	0	0
3	A	14	0	13	0	0
4	A	35	0	0	0	0
5	A	1	0	0	0	0
6	A	49	0	33	0	0
7	A	12	0	13	2	0
8	A	219	0	0	6	0
All	All	2113	0	1842	29	0

The all-atom clashscore is defined as the number of clashes found per 1000 atoms (including hydrogen atoms). The all-atom clashscore for this structure is 8.

All (29) close contacts within the same asymmetric unit are listed below, sorted by their clash

magnitude.

Atom-1	Atom-2	Interatomic distance (Å)	Clash overlap (Å)
1:A:137:ARG:HH12	1:A:159:LYS:HE2	1.20	1.07
1:A:189:SER:HB2	1:A:224:PRO:HG3	1.51	0.92
1:A:137:ARG:NH1	1:A:159:LYS:HE2	1.94	0.81
1:A:36(A):THR:HG23	8:A:1195:HOH:O	1.81	0.79
1:A:36(A):THR:O	1:A:36(C):ASN:N	2.33	0.59
1:A:27:ARG:HH22	1:A:137:ARG:HD2	1.67	0.58
1:A:36(A):THR:C	1:A:36(C):ASN:H	2.06	0.58
1:A:86:ILE:O	1:A:87:LYS:HD3	2.04	0.57
1:A:74:THR:HG22	7:A:910:MES:H62	1.90	0.54
1:A:235:GLN:HB3	1:A:236:PRO:HD3	1.89	0.54
1:A:231:ILE:HG22	8:A:1109:HOH:O	2.09	0.51
1:A:164:ASP:HB3	8:A:1028:HOH:O	2.12	0.49
1:A:191:PHE:CG	1:A:192:LYS:N	2.80	0.49
7:A:910:MES:H82	8:A:1085:HOH:O	2.12	0.49
1:A:116:LEU:HD12	1:A:117:ALA:N	2.28	0.49
1:A:48:ARG:HB2	1:A:51:PHE:HB2	1.96	0.48
1:A:45:PHE:CD1	1:A:198:PRO:HB3	2.48	0.48
1:A:181:LEU:HB2	1:A:228:PHE:HB2	1.97	0.47
1:A:36(A):THR:C	1:A:36(C):ASN:N	2.68	0.46
1:A:188:LYS:HE3	8:A:1194:HOH:O	2.15	0.46
1:A:45:PHE:CZ	1:A:53:LEU:HD23	2.52	0.45
1:A:56:ALA:HB2	1:A:103:ILE:O	2.18	0.44
1:A:126:GLN:H	1:A:235:GLN:NE2	2.15	0.44
1:A:36(C):ASN:HB3	8:A:1185:HOH:O	2.16	0.44
1:A:40:LYS:HG3	1:A:41:PHE:N	2.33	0.43
1:A:188:LYS:O	1:A:189:SER:HB2	2.19	0.43
1:A:235:GLN:HG2	1:A:239:ASN:ND2	2.33	0.43
1:A:125:SER:HB3	1:A:128:ASN:HD22	1.84	0.41
1:A:174:ARG:HG3	1:A:175:ASP:OD2	2.20	0.41

There are no symmetry-related clashes.

5.3 Torsion angles

5.3.1 Protein backbone

In the following table, the Percentiles column shows the percent Ramachandran outliers of the chain as a percentile score with respect to all X-ray entries followed by that with respect to entries of similar resolution.

The Analysed column shows the number of residues for which the backbone conformation was analysed, and the total number of residues.

Mol	Chain	Analysed	Favoured	Allowed	Outliers	Percentiles	
1	A	224/226 (99%)	217 (97%)	5 (2%)	2 (1%)	20	8

All (2) Ramachandran outliers are listed below:

Mol	Chain	Res	Type
1	A	36(B)	SER
1	A	36(C)	ASN

5.3.2 Protein sidechains ⓘ

In the following table, the Percentiles column shows the percent sidechain outliers of the chain as a percentile score with respect to all X-ray entries followed by that with respect to entries of similar resolution.

The Analysed column shows the number of residues for which the sidechain conformation was analysed, and the total number of residues.

Mol	Chain	Analysed	Rotameric	Outliers	Percentiles	
1	A	190/190 (100%)	183 (96%)	7 (4%)	39	28

All (7) residues with a non-rotameric sidechain are listed below:

Mol	Chain	Res	Type
1	A	36(B)	SER
1	A	79	ASP
1	A	87	LYS
1	A	116	LEU
1	A	137	ARG
1	A	164	ASP
1	A	235	GLN

Some sidechains can be flipped to improve hydrogen bonding and reduce clashes. All (6) such sidechains are listed below:

Mol	Chain	Res	Type
1	A	126	GLN
1	A	128	ASN
1	A	156	GLN
1	A	166	GLN
1	A	235	GLN

Continued on next page...

Continued from previous page...

Mol	Chain	Res	Type
1	A	239	ASN

5.3.3 RNA ⓘ

There are no RNA molecules in this entry.

5.4 Non-standard residues in protein, DNA, RNA chains ⓘ

There are no non-standard protein/DNA/RNA residues in this entry.

5.5 Carbohydrates ⓘ

2 carbohydrates are modelled in this entry.

In the following table, the Counts columns list the number of bonds (or angles) for which Mogul statistics could be retrieved, the number of bonds (or angles) that are observed in the model and the number of bonds (or angles) that are defined in the chemical component dictionary. The Link column lists molecule types, if any, to which the group is linked. The Z score for a bond length (or angle) is the number of standard deviations the observed value is removed from the expected value. A bond length (or angle) with $|Z| > 2$ is considered an outlier worth inspection. RMSZ is the root-mean-square of all Z scores of the bond lengths (or angles).

Mol	Type	Chain	Res	Link	Bond lengths			Bond angles		
					Counts	RMSZ	# $ Z > 2$	Counts	RMSZ	# $ Z > 2$
2	NAG	A	301	1,2	14,14,15	0.86	1 (7%)	15,19,21	1.67	5 (33%)
2	NAG	A	303	2	14,14,15	0.62	0	15,19,21	1.16	2 (13%)

In the following table, the Chirals column lists the number of chiral outliers, the number of chiral centers analysed, the number of these observed in the model and the number defined in the chemical component dictionary. Similar counts are reported in the Torsion and Rings columns. '-' means no outliers of that kind were identified.

Mol	Type	Chain	Res	Link	Chirals	Torsions	Rings
2	NAG	A	301	1,2	-	0/6/23/26	0/1/1/1
2	NAG	A	303	2	-	0/6/23/26	0/1/1/1

All (1) bond length outliers are listed below:

Mol	Chain	Res	Type	Atoms	Z	Observed(Å)	Ideal(Å)
2	A	301	NAG	C1-C2	2.51	1.55	1.52

All (7) bond angle outliers are listed below:

Mol	Chain	Res	Type	Atoms	Z	Observed(°)	Ideal(°)
2	A	301	NAG	O7-C7-C8	-2.83	116.90	122.06
2	A	303	NAG	C1-O5-C5	-2.29	109.00	112.17
2	A	301	NAG	C4-C3-C2	-2.16	107.85	111.02
2	A	303	NAG	C2-N2-C7	2.01	125.88	122.94
2	A	301	NAG	C1-O5-C5	2.47	115.57	112.17
2	A	301	NAG	C2-N2-C7	2.69	126.86	122.94
2	A	301	NAG	C8-C7-N2	3.10	121.71	116.11

There are no chirality outliers.

There are no torsion outliers.

There are no ring outliers.

No monomer is involved in short contacts.

5.6 Ligand geometry

Of 11 ligands modelled in this entry, 1 is monoatomic - leaving 10 for Mogul analysis.

In the following table, the Counts columns list the number of bonds (or angles) for which Mogul statistics could be retrieved, the number of bonds (or angles) that are observed in the model and the number of bonds (or angles) that are defined in the chemical component dictionary. The Link column lists molecule types, if any, to which the group is linked. The Z score for a bond length (or angle) is the number of standard deviations the observed value is removed from the expected value. A bond length (or angle) with $|Z| > 2$ is considered an outlier worth inspection. RMSZ is the root-mean-square of all Z scores of the bond lengths (or angles).

Mol	Type	Chain	Res	Link	Bond lengths			Bond angles		
					Counts	RMSZ	# Z > 2	Counts	RMSZ	# Z > 2
3	NAG	A	302	1	14,14,15	1.34	2 (14%)	15,19,21	2.20	5 (33%)
6	OHH	A	901	-	54,55,55	4.28	40 (74%)	71,81,81	1.58	9 (12%)
4	SO4	A	902	-	4,4,4	0.92	0	6,6,6	0.46	0
4	SO4	A	903	-	4,4,4	0.32	0	6,6,6	0.10	0
4	SO4	A	904	-	4,4,4	0.31	0	6,6,6	0.06	0
4	SO4	A	905	-	4,4,4	0.34	0	6,6,6	0.07	0
4	SO4	A	906	-	4,4,4	0.33	0	6,6,6	0.08	0
4	SO4	A	907	-	4,4,4	0.32	0	6,6,6	0.08	0
4	SO4	A	908	-	4,4,4	0.33	0	6,6,6	0.07	0
7	MES	A	910	-	12,12,12	1.37	3 (25%)	14,16,16	0.72	0

In the following table, the Chirals column lists the number of chiral outliers, the number of chiral centers analysed, the number of these observed in the model and the number defined in the chemical

component dictionary. Similar counts are reported in the Torsion and Rings columns. '-' means no outliers of that kind were identified.

Mol	Type	Chain	Res	Link	Chirals	Torsions	Rings
3	NAG	A	302	1	-	0/6/23/26	0/1/1/1
6	OHH	A	901	-	-	0/38/48/48	0/7/7/7
4	SO4	A	902	-	-	0/0/0/0	0/0/0/0
4	SO4	A	903	-	-	0/0/0/0	0/0/0/0
4	SO4	A	904	-	-	0/0/0/0	0/0/0/0
4	SO4	A	905	-	-	0/0/0/0	0/0/0/0
4	SO4	A	906	-	-	0/0/0/0	0/0/0/0
4	SO4	A	907	-	-	0/0/0/0	0/0/0/0
4	SO4	A	908	-	-	0/0/0/0	0/0/0/0
7	MES	A	910	-	-	0/6/14/14	0/1/1/1

All (45) bond length outliers are listed below:

Mol	Chain	Res	Type	Atoms	Z	Observed(Å)	Ideal(Å)
6	A	901	OHH	P1-O1	-4.21	1.47	1.54
6	A	901	OHH	P1-C9	-3.64	1.74	1.82
6	A	901	OHH	C20-N1	2.11	1.51	1.46
7	A	910	MES	C7-N4	2.19	1.52	1.47
3	A	302	NAG	C4-C5	2.33	1.58	1.53
6	A	901	OHH	C1-C8A	2.39	1.47	1.41
7	A	910	MES	C5-N4	2.42	1.53	1.47
7	A	910	MES	C3-N4	2.49	1.53	1.47
6	A	901	OHH	C17-C8B	2.68	1.48	1.41
6	A	901	OHH	C14-C4B	2.72	1.48	1.41
3	A	302	NAG	C3-C2	2.76	1.58	1.52
6	A	901	OHH	C29-C4C	2.83	1.48	1.41
6	A	901	OHH	C8-C8A	2.92	1.49	1.41
6	A	901	OHH	C12-C19	3.13	1.55	1.50
6	A	901	OHH	C2-C1	3.14	1.44	1.36
6	A	901	OHH	C2-C3	3.14	1.44	1.38
6	A	901	OHH	C30-C4C	3.15	1.49	1.41
6	A	901	OHH	C33-C8C	3.17	1.49	1.41
6	A	901	OHH	C7-C8	3.25	1.44	1.36
6	A	901	OHH	C25-C21	3.45	1.61	1.52
6	A	901	OHH	C24-N2	3.50	1.53	1.47
6	A	901	OHH	C15-C14	3.84	1.45	1.36
6	A	901	OHH	C29-C28	3.93	1.44	1.36
6	A	901	OHH	C5-C4A	4.13	1.50	1.42
6	A	901	OHH	C27-C26	4.15	1.56	1.50
6	A	901	OHH	C13-C12	4.17	1.43	1.37
6	A	901	OHH	C32-C33	4.18	1.46	1.36

Continued on next page...

Continued from previous page...

Mol	Chain	Res	Type	Atoms	Z	Observed(Å)	Ideal(Å)
6	A	901	OHH	C16-C17	4.20	1.46	1.36
6	A	901	OHH	C6-C5	4.37	1.46	1.36
6	A	901	OHH	C31-C30	4.44	1.47	1.36
6	A	901	OHH	C6-C7	4.54	1.49	1.38
6	A	901	OHH	C32-C31	4.72	1.49	1.38
6	A	901	OHH	C15-C16	4.81	1.49	1.38
6	A	901	OHH	C26-N2	4.89	1.45	1.34
6	A	901	OHH	C19-N1	5.52	1.46	1.34
6	A	901	OHH	C4-C4A	5.68	1.52	1.43
6	A	901	OHH	C3-C4	6.08	1.48	1.37
6	A	901	OHH	C11-C10	6.50	1.60	1.49
6	A	901	OHH	C4C-C8C	6.66	1.57	1.42
6	A	901	OHH	C8B-C4B	6.66	1.57	1.42
6	A	901	OHH	C34-C27	6.85	1.49	1.37
6	A	901	OHH	C28-C27	7.35	1.51	1.39
6	A	901	OHH	C4A-C8A	8.17	1.57	1.43
6	A	901	OHH	C18-C11	8.23	1.48	1.37
6	A	901	OHH	C12-C11	10.03	1.57	1.40

All (14) bond angle outliers are listed below:

Mol	Chain	Res	Type	Atoms	Z	Observed(°)	Ideal(°)
6	A	901	OHH	O2-P1-O3	-7.47	94.43	113.41
6	A	901	OHH	C18-C11-C12	-4.56	116.15	119.61
3	A	302	NAG	O5-C1-C2	-4.07	105.82	111.47
3	A	302	NAG	C1-O5-C5	-4.05	106.58	112.17
3	A	302	NAG	C1-C2-N2	-3.92	103.78	110.49
6	A	901	OHH	C20-N1-C19	-2.31	115.44	121.81
6	A	901	OHH	O3-P1-C9	-2.11	105.74	113.81
3	A	302	NAG	C4-C3-C2	2.07	114.05	111.02
6	A	901	OHH	C20-N1-C21	2.14	120.27	117.84
6	A	901	OHH	C13-C12-C11	2.22	121.29	119.61
6	A	901	OHH	O5-C19-N1	2.50	125.73	122.72
6	A	901	OHH	C5-C4A-C4	3.28	127.32	123.44
3	A	302	NAG	C6-C5-C4	3.54	121.28	113.00
6	A	901	OHH	O2-P1-O1	3.89	118.70	107.69

There are no chirality outliers.

There are no torsion outliers.

There are no ring outliers.

1 monomer is involved in 2 short contacts:

Mol	Chain	Res	Type	Clashes	Symm-Clashes
7	A	910	MES	2	0

5.7 Other polymers [i](#)

There are no such residues in this entry.

5.8 Polymer linkage issues [i](#)

There are no chain breaks in this entry.

6 Fit of model and data [i](#)

6.1 Protein, DNA and RNA chains [i](#)

In the following table, the column labelled ‘#RSRZ> 2’ contains the number (and percentage) of RSRZ outliers, followed by percent RSRZ outliers for the chain as percentile scores relative to all X-ray entries and entries of similar resolution. The OWAB column contains the minimum, median, 95th percentile and maximum values of the occupancy-weighted average B-factor per residue. The column labelled ‘Q< 0.9’ lists the number of (and percentage) of residues with an average occupancy less than 0.9.

Mol	Chain	Analysed	<RSRZ>	#RSRZ>2	OWAB(Å ²)	Q<0.9
1	A	226/226 (100%)	0.13	3 (1%) 77 80	18, 27, 42, 63	0

All (3) RSRZ outliers are listed below:

Mol	Chain	Res	Type	RSRZ
1	A	36(C)	ASN	5.1
1	A	36(B)	SER	2.6
1	A	147	LEU	2.1

6.2 Non-standard residues in protein, DNA, RNA chains [i](#)

There are no non-standard protein/DNA/RNA residues in this entry.

6.3 Carbohydrates [i](#)

In the following table, the Atoms column lists the number of modelled atoms in the group and the number defined in the chemical component dictionary. LLDF column lists the quality of electron density of the group with respect to its neighbouring residues in protein, DNA or RNA chains. The B-factors column lists the minimum, median, 95th percentile and maximum values of B factors of atoms in the group. The column labelled ‘Q< 0.9’ lists the number of atoms with occupancy less than 0.9.

Mol	Type	Chain	Res	Atoms	RSCC	RSR	LLDF	B-factors(Å ²)	Q<0.9
2	NAG	A	301	14/15	0.86	0.17	3.78	41,48,51,53	0
2	NAG	A	303	14/15	0.78	0.36	-	52,58,62,63	0

6.4 Ligands [i](#)

In the following table, the Atoms column lists the number of modelled atoms in the group and the number defined in the chemical component dictionary. LLDF column lists the quality of electron

density of the group with respect to its neighbouring residues in protein, DNA or RNA chains. The B-factors column lists the minimum, median, 95th percentile and maximum values of B factors of atoms in the group. The column labelled 'Q< 0.9' lists the number of atoms with occupancy less than 0.9.

Mol	Type	Chain	Res	Atoms	RSCC	RSR	LLDF	B-factors(Å ²)	Q<0.9
7	MES	A	910	12/12	0.61	0.35	10.54	64,69,79,79	0
4	SO4	A	904	5/5	0.90	0.24	2.61	65,65,67,68	0
6	OHH	A	901	49/49	0.94	0.12	0.45	18,23,32,34	0
4	SO4	A	905	5/5	0.93	0.11	-0.28	66,67,68,68	0
3	NAG	A	302	14/15	0.75	0.32	-	47,53,59,62	0
5	CO	A	909	1/1	0.99	0.12	-	5,5,5,5	1
4	SO4	A	906	5/5	0.84	0.29	-	82,82,83,83	0
4	SO4	A	907	5/5	0.92	0.34	-	78,78,79,79	0
4	SO4	A	902	5/5	0.90	0.41	-	35,39,41,43	5
4	SO4	A	903	5/5	0.95	0.16	-	53,54,57,57	0
4	SO4	A	908	5/5	0.89	0.34	-	75,75,76,76	0

6.5 Other polymers [i](#)

There are no such residues in this entry.