



Full wwPDB X-ray Structure Validation Report ⓘ

Feb 14, 2017 – 11:17 pm GMT

PDB ID : 3T6A
Title : Structure of the C-terminal domain of BCAR3
Authors : Mace, P.D.; Robinson, H.; Riedl, S.J.
Deposited on : 2011-07-28
Resolution : 2.40 Å(reported)

This is a Full wwPDB X-ray Structure Validation Report for a publicly released PDB entry.

We welcome your comments at validation@mail.wwpdb.org

A user guide is available at

<http://wwpdb.org/validation/2016/XrayValidationReportHelp>

with specific help available everywhere you see the ⓘ symbol.

The following versions of software and data (see [references ⓘ](#)) were used in the production of this report:

MolProbity : 4.02b-467
Mogul : 1.7.2 (RC1), CSD as538be (2017)
Xtriage (Phenix) : 1.9-1692
EDS : trunk28620
Percentile statistics : 20161228.v01 (using entries in the PDB archive December 28th 2016)
Refmac : 5.8.0135
CCP4 : 6.5.0
Ideal geometry (proteins) : Engh & Huber (2001)
Ideal geometry (DNA, RNA) : Parkinson et al. (1996)
Validation Pipeline (wwPDB-VP) : recalc28949

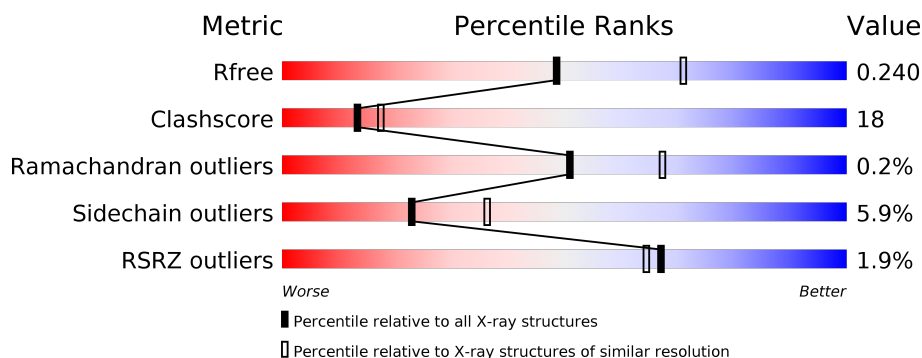
1 Overall quality at a glance

The following experimental techniques were used to determine the structure:

X-RAY DIFFRACTION

The reported resolution of this entry is 2.40 Å.

Percentile scores (ranging between 0-100) for global validation metrics of the entry are shown in the following graphic. The table shows the number of entries on which the scores are based.



Metric	Whole archive (#Entries)	Similar resolution (#Entries, resolution range(Å))
R_{free}	100719	3166 (2.40-2.40)
Clashscore	112137	3674 (2.40-2.40)
Ramachandran outliers	110173	3616 (2.40-2.40)
Sidechain outliers	110143	3617 (2.40-2.40)
RSRZ outliers	101464	3195 (2.40-2.40)

The table below summarises the geometric issues observed across the polymeric chains and their fit to the electron density. The red, orange, yellow and green segments on the lower bar indicate the fraction of residues that contain outliers for ≥ 3 , 2, 1 and 0 types of geometric quality criteria. A grey segment represents the fraction of residues that are not modelled. The numeric value for each fraction is indicated below the corresponding segment, with a dot representing fractions $\leq 5\%$. The upper red bar (where present) indicates the fraction of residues that have poor fit to the electron density. The numeric value is given above the bar.

Mol	Chain	Length	Quality of chain
1	A	333	<div> <div>2%</div> <div> <div></div> <div>62%</div> <div>28%</div> <div>• 8%</div> </div> </div>
1	B	333	<div> <div>3%</div> <div> <div></div> <div>62%</div> <div>27%</div> <div>• 8%</div> </div> </div>
1	C	333	<div> <div>2%</div> <div> <div></div> <div>65%</div> <div>23%</div> <div>• 8%</div> </div> </div>
1	D	333	<div> <div>%</div> <div> <div></div> <div>66%</div> <div>23%</div> <div>• 8%</div> </div> </div>

The following table lists non-polymeric compounds, carbohydrate monomers and non-standard residues in protein, DNA, RNA chains that are outliers for geometric or electron-density-fit crite-

ria:

Mol	Type	Chain	Res	Chirality	Geometry	Clashes	Electron density
2	POG	B	834	-	-	-	X
3	UNX	D	834	-	-	-	X
3	UNX	D	835	-	-	-	X
3	UNX	D	841	-	-	-	X

2 Entry composition

There are 4 unique types of molecules in this entry. The entry contains 10297 atoms, of which 48 are hydrogens and 0 are deuteriums.

In the tables below, the ZeroOcc column contains the number of atoms modelled with zero occupancy, the AltConf column contains the number of residues with at least one atom in alternate conformation and the Trace column contains the number of residues modelled with at most 2 atoms.

- Molecule 1 is a protein called Breast cancer anti-estrogen resistance protein 3.

Mol	Chain	Residues	Atoms						ZeroOcc	AltConf	Trace
1	A	308	Total	C	H	N	O	S	0	1	0
			2466	1545	12	427	462	20			
1	B	308	Total	C	H	N	O	S	0	3	0
			2480	1557	12	428	463	20			
1	C	308	Total	C	H	N	O	S	0	1	0
			2466	1545	12	427	462	20			
1	D	308	Total	C	H	N	O	S	0	2	0
			2471	1548	12	427	464	20			

There are 40 discrepancies between the modelled and reference sequences:

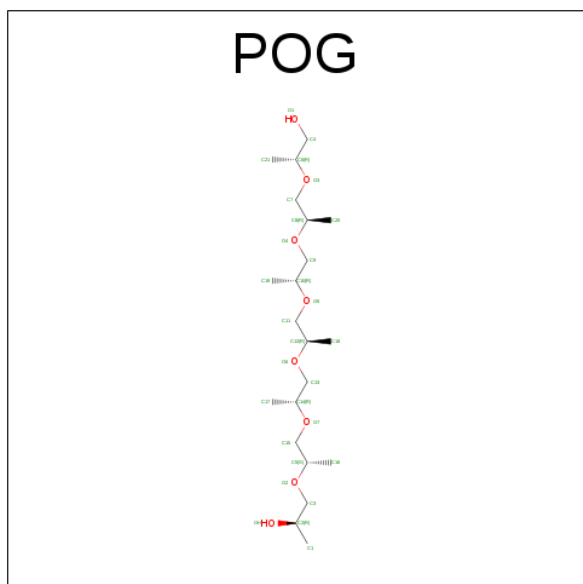
Chain	Residue	Modelled	Actual	Comment	Reference
A	501	MET	-	INITIATING METHIONINE	UNP 075815
A	536	LEU	MET	ENGINEERED MUTATION	UNP 075815
A	826	LEU	-	EXPRESSION TAG	UNP 075815
A	827	GLU	-	EXPRESSION TAG	UNP 075815
A	828	HIS	-	EXPRESSION TAG	UNP 075815
A	829	HIS	-	EXPRESSION TAG	UNP 075815
A	830	HIS	-	EXPRESSION TAG	UNP 075815
A	831	HIS	-	EXPRESSION TAG	UNP 075815
A	832	HIS	-	EXPRESSION TAG	UNP 075815
A	833	HIS	-	EXPRESSION TAG	UNP 075815
B	501	MET	-	INITIATING METHIONINE	UNP 075815
B	536	LEU	MET	ENGINEERED MUTATION	UNP 075815
B	826	LEU	-	EXPRESSION TAG	UNP 075815
B	827	GLU	-	EXPRESSION TAG	UNP 075815
B	828	HIS	-	EXPRESSION TAG	UNP 075815
B	829	HIS	-	EXPRESSION TAG	UNP 075815
B	830	HIS	-	EXPRESSION TAG	UNP 075815
B	831	HIS	-	EXPRESSION TAG	UNP 075815
B	832	HIS	-	EXPRESSION TAG	UNP 075815
B	833	HIS	-	EXPRESSION TAG	UNP 075815
C	501	MET	-	INITIATING METHIONINE	UNP 075815

Continued on next page...

Continued from previous page...

Chain	Residue	Modelled	Actual	Comment	Reference
C	536	LEU	MET	ENGINEERED MUTATION	UNP O75815
C	826	LEU	-	EXPRESSION TAG	UNP O75815
C	827	GLU	-	EXPRESSION TAG	UNP O75815
C	828	HIS	-	EXPRESSION TAG	UNP O75815
C	829	HIS	-	EXPRESSION TAG	UNP O75815
C	830	HIS	-	EXPRESSION TAG	UNP O75815
C	831	HIS	-	EXPRESSION TAG	UNP O75815
C	832	HIS	-	EXPRESSION TAG	UNP O75815
C	833	HIS	-	EXPRESSION TAG	UNP O75815
D	501	MET	-	INITIATING METHIONINE	UNP O75815
D	536	LEU	MET	ENGINEERED MUTATION	UNP O75815
D	826	LEU	-	EXPRESSION TAG	UNP O75815
D	827	GLU	-	EXPRESSION TAG	UNP O75815
D	828	HIS	-	EXPRESSION TAG	UNP O75815
D	829	HIS	-	EXPRESSION TAG	UNP O75815
D	830	HIS	-	EXPRESSION TAG	UNP O75815
D	831	HIS	-	EXPRESSION TAG	UNP O75815
D	832	HIS	-	EXPRESSION TAG	UNP O75815
D	833	HIS	-	EXPRESSION TAG	UNP O75815

- Molecule 2 is (20S)-2,5,8,11,14,17-HEXAMETHYL-3,6,9,12,15,18-HEXAAXAHENICOSAN E-1,20-DIOL (three-letter code: POG) (formula: C₂₁H₄₄O₈).



Mol	Chain	Residues	Atoms			ZeroOcc	AltConf
2	A	1	Total	C	O	0	0
			16	12	4		

Continued on next page...

Continued from previous page...

Mol	Chain	Residues	Atoms			ZeroOcc	AltConf
2	B	1	Total	C	O	0	0
			17	12	5		

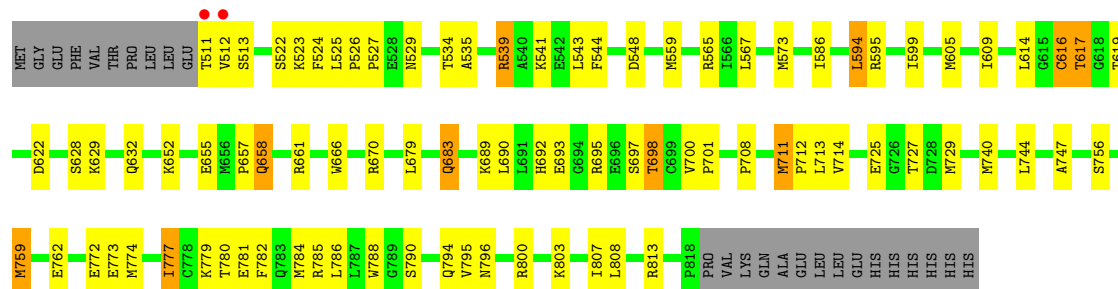
- Molecule 3 is UNKNOWN ATOM OR ION (three-letter code: UNX) (formula: X).

Mol	Chain	Residues	Atoms		ZeroOcc	AltConf
3	D	8	Total	X	0	0
			8	8		

- Molecule 4 is water.

Mol	Chain	Residues	Atoms		ZeroOcc	AltConf
4	A	93	Total	O	0	0
			93	93		
4	B	105	Total	O	0	0
			105	105		
4	C	87	Total	O	0	0
			87	87		
4	D	88	Total	O	0	0
			88	88		

- Molecule 1: Breast cancer anti-estrogen resistance protein 3



4 Data and refinement statistics

Property	Value	Source
Space group	P 21 21 21	Depositor
Cell constants a, b, c, α , β , γ	50.23Å 151.89Å 196.50Å 90.00° 90.00° 90.00°	Depositor
Resolution (Å)	19.76 – 2.40 19.76 – 2.40	Depositor EDS
% Data completeness (in resolution range)	94.3 (19.76-2.40) 98.6 (19.76-2.40)	Depositor EDS
R_{merge}	0.10	Depositor
R_{sym}	(Not available)	Depositor
$\langle I/\sigma(I) \rangle$ ¹	2.86 (at 2.41Å)	Xtriage
Refinement program	PHENIX (phenix.refine: 1.6.4_486)	Depositor
R, R_{free}	0.174 , 0.244 0.180 , 0.240	Depositor DCC
R_{free} test set	2942 reflections (5.25%)	DCC
Wilson B-factor (Å ²)	32.0	Xtriage
Anisotropy	0.504	Xtriage
Bulk solvent k_{sol} (e/Å ³), B_{sol} (Å ²)	0.33 , 53.4	EDS
L-test for twinning ²	$\langle L \rangle = 0.48$, $\langle L^2 \rangle = 0.31$	Xtriage
Estimated twinning fraction	No twinning to report.	Xtriage
F_o, F_c correlation	0.96	EDS
Total number of atoms	10297	wwPDB-VP
Average B, all atoms (Å ²)	42.0	wwPDB-VP

Xtriage's analysis on translational NCS is as follows: *The analyses of the Patterson function reveals a significant off-origin peak that is 25.30 % of the origin peak, indicating pseudo translational symmetry. The chance of finding a peak of this or larger height randomly in a structure without pseudo translational symmetry is equal to 3.2527e-03. The detected translational NCS is most likely also responsible for the elevated intensity ratio.*

¹Intensities estimated from amplitudes.

²Theoretical values of $\langle |L| \rangle$, $\langle L^2 \rangle$ for acentric reflections are 0.5, 0.333 respectively for untwinned datasets, and 0.375, 0.2 for perfectly twinned datasets.

5 Model quality [i](#)

5.1 Standard geometry [i](#)

Bond lengths and bond angles in the following residue types are not validated in this section: UNX, POG

The Z score for a bond length (or angle) is the number of standard deviations the observed value is removed from the expected value. A bond length (or angle) with $|Z| > 5$ is considered an outlier worth inspection. RMSZ is the root-mean-square of all Z scores of the bond lengths (or angles).

Mol	Chain	Bond lengths		Bond angles	
		RMSZ	$\# Z > 5$	RMSZ	$\# Z > 5$
1	A	0.38	0/2500	0.52	0/3376
1	B	0.39	0/2521	0.52	0/3404
1	C	0.39	0/2500	0.54	0/3376
1	D	0.38	0/2508	0.53	0/3387
All	All	0.38	0/10029	0.53	0/13543

There are no bond length outliers.

There are no bond angle outliers.

There are no chirality outliers.

There are no planarity outliers.

5.2 Too-close contacts [i](#)

In the following table, the Non-H and H(model) columns list the number of non-hydrogen atoms and hydrogen atoms in the chain respectively. The H(added) column lists the number of hydrogen atoms added and optimized by MolProbity. The Clashes column lists the number of clashes within the asymmetric unit, whereas Symm-Clashes lists symmetry related clashes.

Mol	Chain	Non-H	H(model)	H(added)	Clashes	Symm-Clashes
1	A	2454	12	2484	94	0
1	B	2468	12	2501	108	0
1	C	2454	12	2484	84	0
1	D	2459	12	2488	88	0
2	A	16	0	23	0	0
2	B	17	0	24	7	0
3	D	8	0	0	0	0
4	A	93	0	0	6	0
4	B	105	0	0	13	0

Continued on next page...

Continued from previous page...

Mol	Chain	Non-H	H(model)	H(added)	Clashes	Symm-Clashes
4	C	87	0	0	6	0
4	D	88	0	0	7	0
All	All	10249	48	10004	360	0

The all-atom clashscore is defined as the number of clashes found per 1000 atoms (including hydrogen atoms). The all-atom clashscore for this structure is 18.

All (360) close contacts within the same asymmetric unit are listed below, sorted by their clash magnitude.

Atom-1	Atom-2	Interatomic distance (Å)	Clash overlap (Å)
1:D:619:THR:HG23	1:D:622[B]:ASP:H	1.04	1.16
1:D:619:THR:HG23	1:D:622[A]:ASP:H	1.05	1.16
1:C:744:LEU:HD12	1:D:744:LEU:HD12	1.19	1.15
1:A:744:LEU:HD12	1:B:744:LEU:HD12	1.29	1.15
1:D:813:ARG:HH11	1:D:813:ARG:HG2	1.11	1.15
1:D:539:ARG:HH11	1:D:539:ARG:HG2	1.06	1.13
1:B:702:PRO:HA	1:D:759:MET:HG3	1.30	1.13
1:C:530:LYS:HB2	1:C:531:PRO:HD2	1.42	1.01
1:C:744:LEU:CD1	1:D:744:LEU:HD12	1.92	0.99
1:A:543:LEU:HD11	1:A:773:GLU:HG2	1.45	0.97
1:D:573:MET:HE3	4:D:910:HOH:O	1.65	0.97
1:D:679:LEU:HD12	1:D:683:GLN:HG3	1.46	0.96
1:B:715:THR:HG23	1:B:730:TRP:HE1	1.32	0.94
1:A:748:ARG:HB2	4:B:845:HOH:O	1.67	0.94
1:B:748:ARG:HH11	1:B:748:ARG:HG2	1.30	0.93
1:C:744:LEU:HD12	1:D:744:LEU:CD1	2.00	0.90
1:C:559:MET:HE2	1:C:779:LYS:HG2	1.52	0.90
1:B:529:ASN:ND2	1:B:785:ARG:HH21	1.70	0.90
1:B:702:PRO:HA	1:D:759:MET:CG	2.02	0.89
1:D:539:ARG:HG2	1:D:539:ARG:NH1	1.82	0.88
1:B:540:ALA:HB1	1:B:777:ILE:HD11	1.56	0.88
1:D:813:ARG:HG2	1:D:813:ARG:NH1	1.86	0.87
1:B:529:ASN:HD22	1:B:785:ARG:HH21	1.20	0.86
1:D:511:THR:HG22	1:D:512:VAL:H	1.39	0.86
1:C:559:MET:HE2	1:C:779:LYS:CG	2.06	0.86
1:B:512:VAL:HG22	1:B:513:SER:H	1.41	0.85
1:D:658:GLN:HE21	1:D:658:GLN:H	1.22	0.85
1:C:559:MET:HE3	4:C:920:HOH:O	1.77	0.84
1:A:512:VAL:HG22	1:A:513:SER:H	1.42	0.84
1:A:541:LYS:HD3	1:A:616:CYS:CB	2.09	0.83
1:C:683:GLN:HA	1:C:683:GLN:HE21	1.44	0.83

Continued on next page...

Continued from previous page...

Atom-1	Atom-2	Interatomic distance (Å)	Clash overlap (Å)
1:B:748:ARG:HH11	1:B:748:ARG:CG	1.92	0.82
1:A:541:LYS:HD3	1:A:616:CYS:HB3	1.61	0.81
1:A:809:THR:O	1:A:813:ARG:HG3	1.80	0.81
1:C:559:MET:CE	1:C:779:LYS:HG2	2.11	0.81
1:C:562:ARG:HH22	1:C:775:ASN:HD21	1.25	0.81
1:B:562:ARG:HH12	1:B:775:ASN:HD21	1.29	0.80
1:C:635:VAL:CG2	1:C:679:LEU:HD21	2.11	0.80
1:D:658:GLN:NE2	1:D:658:GLN:H	1.80	0.80
1:A:737:CYS:HA	1:A:740:MET:HE2	1.63	0.78
1:C:661:ARG:NH2	1:C:813:ARG:HA	1.98	0.78
1:A:511:THR:HG22	1:A:512:VAL:H	1.48	0.78
1:B:715:THR:CG2	1:B:730:TRP:HE1	1.96	0.78
1:B:658:GLN:HE21	1:B:658:GLN:H	1.30	0.78
1:A:529:ASN:HD21	1:A:785:ARG:HE	1.30	0.78
1:B:657:PRO:HA	1:B:660:THR:HG22	1.66	0.77
1:B:679:LEU:HD12	1:B:683:GLN:HG3	1.66	0.77
1:D:544:PHE:O	1:D:629:LYS:HE3	1.84	0.77
1:D:617:THR:HG22	1:D:622[B]:ASP:OD2	1.84	0.76
1:A:658:GLN:HE21	1:A:658:GLN:H	1.30	0.76
1:B:748:ARG:HG2	1:B:748:ARG:NH1	1.92	0.76
1:B:574:ARG:HD3	1:B:580:SER:HA	1.68	0.76
1:C:729:MET:CE	1:C:729:MET:HA	2.15	0.76
1:B:670:ARG:HH21	1:B:678:ILE:HG12	1.51	0.75
1:A:530:LYS:HG2	1:A:533:GLU:HG3	1.68	0.75
1:A:744:LEU:HD12	1:B:744:LEU:CD1	2.12	0.75
1:D:666:TRP:HB3	1:D:670:ARG:HH12	1.51	0.73
1:A:529:ASN:ND2	1:A:785:ARG:HE	1.86	0.73
1:A:759:MET:HG3	1:C:702:PRO:HA	1.70	0.72
1:B:658:GLN:H	1:B:658:GLN:NE2	1.86	0.72
1:A:715:THR:HG22	1:A:730:TRP:HE1	1.54	0.72
1:B:619:THR:HG22	1:B:622:ASP:OD2	1.90	0.72
1:D:619:THR:HG22	1:D:622[A]:ASP:OD1	1.90	0.72
1:C:559:MET:CE	1:C:779:LYS:HA	2.21	0.71
1:B:512:VAL:HG22	1:B:513:SER:N	2.05	0.70
1:C:533:GLU:HB2	1:C:536:LEU:HD12	1.71	0.70
1:B:652:LYS:HE3	1:B:727:THR:OG1	1.91	0.70
1:C:512:VAL:HG22	1:C:513:SER:H	1.56	0.70
1:C:530:LYS:HB2	1:C:531:PRO:CD	2.19	0.70
1:D:701:PRO:HB2	4:D:844:HOH:O	1.91	0.70
1:D:683:GLN:HA	1:D:683:GLN:HE21	1.56	0.69
1:C:729:MET:HE2	1:C:729:MET:HA	1.74	0.69

Continued on next page...

Continued from previous page...

Atom-1	Atom-2	Interatomic distance (Å)	Clash overlap (Å)
1:C:567:LEU:HD21	1:C:762:GLU:HG3	1.73	0.68
1:C:774:MET:O	1:C:777:ILE:HG22	1.92	0.68
1:A:737:CYS:HA	1:A:740:MET:CE	2.23	0.67
1:C:715:THR:HG21	1:C:728:ASP:HB3	1.77	0.67
1:C:744:LEU:HD21	1:D:740:MET:HE2	1.76	0.67
1:A:744:LEU:CD1	1:B:740:MET:HB3	2.24	0.67
1:A:530:LYS:CG	1:A:533:GLU:HG3	2.25	0.67
1:D:655:GLU:HG3	4:D:848:HOH:O	1.94	0.66
1:C:635:VAL:HG21	1:C:679:LEU:HD21	1.76	0.66
1:D:813:ARG:HH11	1:D:813:ARG:CG	1.98	0.66
1:A:715:THR:HG21	1:A:728:ASP:O	1.96	0.65
1:A:759:MET:CG	1:C:702:PRO:HA	2.27	0.65
1:D:559:MET:HE1	1:D:779:LYS:HG2	1.78	0.65
1:D:679:LEU:CD1	1:D:683:GLN:HG3	2.23	0.65
1:A:541:LYS:HD3	1:A:616:CYS:HB2	1.79	0.65
1:B:590:HIS:CD2	1:B:590:HIS:H	2.14	0.65
1:B:712:PRO:O	1:B:715:THR:HG22	1.96	0.64
1:D:666:TRP:HB3	1:D:670:ARG:NH1	2.12	0.64
1:B:711:MET:HB3	1:B:712:PRO:HD3	1.77	0.64
1:B:512:VAL:O	1:B:593:GLN:NE2	2.30	0.64
1:A:590:HIS:H	1:A:590:HIS:CD2	2.14	0.64
1:A:593:GLN:HE21	1:A:593:GLN:HA	1.63	0.64
1:B:736:SER:O	1:B:740:MET:HE2	1.98	0.64
1:C:652:LYS:HE3	1:C:727:THR:OG1	1.98	0.63
1:B:715:THR:HG23	1:B:730:TRP:NE1	2.09	0.63
1:A:512:VAL:HG22	1:A:513:SER:N	2.14	0.63
1:D:619:THR:HG22	1:D:622[A]:ASP:CG	2.19	0.62
1:B:512:VAL:HG13	1:B:513:SER:O	1.99	0.62
1:C:683:GLN:CA	1:C:683:GLN:HE21	2.13	0.62
1:D:524:PHE:HE2	1:D:772:GLU:HG2	1.64	0.62
1:C:724:PHE:CE1	1:C:725:GLU:HG3	2.34	0.61
1:C:737:CYS:HA	1:C:740:MET:HE3	1.81	0.61
1:B:539:ARG:O	1:B:539:ARG:HD2	2.00	0.61
1:A:525:LEU:HD13	1:A:782:PHE:CE1	2.35	0.61
1:D:692:HIS:HD2	4:D:908:HOH:O	1.83	0.61
1:C:511:THR:HG21	1:C:593:GLN:HE22	1.64	0.61
1:A:529:ASN:HD22	1:A:785:ARG:HH21	1.49	0.61
1:B:614:LEU:HD21	1:B:662:LEU:HD11	1.82	0.61
1:B:655:GLU:HG3	4:B:843:HOH:O	2.00	0.60
1:C:559:MET:HE2	1:C:779:LYS:HA	1.82	0.60
1:D:559:MET:CE	1:D:779:LYS:HG2	2.31	0.60

Continued on next page...

Continued from previous page...

Atom-1	Atom-2	Interatomic distance (Å)	Clash overlap (Å)
1:B:670:ARG:HH21	1:B:678:ILE:CG1	2.12	0.60
1:A:559:MET:HE1	1:A:779:LYS:HG2	1.82	0.59
1:D:619:THR:CG2	1:D:622[A]:ASP:CG	2.70	0.59
1:D:544:PHE:CZ	1:D:777:ILE:HD13	2.37	0.59
1:C:529:ASN:HA	1:C:533:GLU:OE2	2.02	0.59
1:C:534:THR:HG23	4:C:900:HOH:O	2.01	0.59
1:A:530:LYS:HG2	1:A:533:GLU:CG	2.32	0.59
1:A:704:ASN:ND2	1:C:704:ASN:HD22	2.01	0.59
1:A:736:SER:HB3	1:A:739:ILE:HD13	1.84	0.59
1:A:524:PHE:HE2	1:A:772:GLU:HG2	1.66	0.59
1:A:715:THR:HG22	1:A:730:TRP:NE1	2.17	0.59
1:C:559:MET:HE3	1:C:779:LYS:HA	1.86	0.58
1:D:511:THR:HG22	1:D:512:VAL:N	2.16	0.58
1:A:744:LEU:HD11	1:B:740:MET:HB3	1.84	0.58
1:B:524:PHE:CD1	1:B:773:GLU:HG3	2.39	0.58
1:B:675[B]:GLN:CD	1:B:675[B]:GLN:H	2.07	0.57
1:C:635:VAL:HG22	1:C:679:LEU:HD21	1.85	0.57
1:D:512:VAL:HG22	1:D:513:SER:H	1.70	0.57
1:C:599:ILE:HD11	1:C:714:VAL:HG12	1.87	0.57
1:B:745:ALA:CB	2:B:834:POG:H162	2.35	0.57
1:D:614:LEU:HD12	1:D:808:LEU:HD22	1.85	0.56
1:A:579:VAL:HG11	1:A:584:GLU:HG2	1.88	0.56
1:C:675:GLN:HA	1:C:675:GLN:NE2	2.20	0.56
1:D:567:LEU:HD21	1:D:762:GLU:HG3	1.87	0.56
1:A:518:ASN:HD21	1:A:794:GLN:HB2	1.71	0.56
1:D:785:ARG:HD2	1:D:790:SER:HA	1.88	0.55
1:B:540:ALA:CB	1:B:777:ILE:HD11	2.32	0.55
1:C:657:PRO:HA	1:C:660:THR:HG22	1.88	0.55
1:B:528:GLU:HG3	1:B:790:SER:OG	2.07	0.55
1:D:559:MET:HE2	1:D:779:LYS:HA	1.89	0.55
1:D:539:ARG:CG	1:D:539:ARG:NH1	2.60	0.55
1:A:518:ASN:ND2	1:A:794:GLN:HB2	2.22	0.55
1:A:713:LEU:HD13	1:A:747:ALA:HB2	1.87	0.55
1:D:512:VAL:HG22	1:D:513:SER:N	2.22	0.54
1:A:675:GLN:NE2	4:A:927:HOH:O	2.36	0.54
1:C:511:THR:HG21	1:C:593:GLN:NE2	2.22	0.54
1:D:813:ARG:CG	1:D:813:ARG:NH1	2.61	0.54
1:A:555:HIS:CG	1:A:774:MET:HG2	2.42	0.54
1:C:638:LYS:HG2	1:C:639:ASP:OD1	2.08	0.54
1:D:565:ARG:HD3	1:D:573:MET:SD	2.48	0.54
1:A:655:GLU:HG3	4:A:846:HOH:O	2.08	0.53

Continued on next page...

Continued from previous page...

Atom-1	Atom-2	Interatomic distance (Å)	Clash overlap (Å)
1:A:736:SER:CB	1:A:739:ILE:HD13	2.38	0.53
1:C:667:THR:HG23	1:C:671:HIS:CE1	2.44	0.53
1:C:518:ASN:HB2	1:C:794:GLN:HE22	1.72	0.53
1:A:722:VAL:HA	4:A:874:HOH:O	2.07	0.53
1:C:635:VAL:HG21	1:C:679:LEU:CD2	2.37	0.53
1:D:679:LEU:HD12	1:D:683:GLN:CG	2.31	0.53
1:A:541:LYS:HD2	1:A:612:ASP:OD1	2.09	0.53
1:A:574:ARG:HB2	1:A:574:ARG:CZ	2.39	0.53
1:A:739:ILE:H	1:A:739:ILE:HD12	1.74	0.53
1:A:744:LEU:HD13	1:B:740:MET:HB3	1.88	0.53
1:D:658:GLN:HE21	1:D:658:GLN:N	2.00	0.53
1:A:512:VAL:HG13	1:A:513:SER:O	2.09	0.53
1:D:599:ILE:HG13	1:D:714:VAL:HG11	1.90	0.53
1:B:780:THR:O	1:B:784:MET:HG3	2.09	0.53
1:D:652:LYS:HE3	1:D:727:THR:OG1	2.09	0.53
1:B:511:THR:CG2	4:B:894:HOH:O	2.57	0.52
1:A:512:VAL:O	1:A:593:GLN:NE2	2.42	0.52
1:A:574:ARG:HB2	1:A:574:ARG:NH1	2.23	0.52
1:D:782:PHE:HE2	1:D:786:LEU:HD11	1.74	0.52
1:C:532:LEU:HD21	1:C:804:PHE:HZ	1.74	0.52
1:D:605:MET:O	1:D:609:ILE:HG12	2.09	0.52
1:B:619:THR:HG23	1:B:622:ASP:H	1.74	0.52
1:C:661:ARG:HH21	1:C:813:ARG:HA	1.73	0.52
1:B:635:VAL:HG21	1:B:679:LEU:HD21	1.92	0.52
1:B:745:ALA:HB1	2:B:834:POG:H162	1.91	0.52
1:A:795:VAL:HG12	1:A:796:ASN:N	2.23	0.52
1:B:540:ALA:HB1	1:B:777:ILE:CD1	2.32	0.51
1:C:715:THR:CG2	1:C:730:TRP:HE1	2.24	0.51
1:B:619:THR:HG22	1:B:622:ASP:CG	2.31	0.51
1:B:595:ARG:HG2	1:B:714:VAL:HG22	1.92	0.51
1:B:661:ARG:NH2	1:B:813:ARG:HA	2.26	0.51
1:A:614:LEU:HD23	1:A:815:LEU:HD12	1.92	0.51
1:B:655:GLU:HG2	4:B:869:HOH:O	2.09	0.51
1:B:525:LEU:HD12	1:B:526:PRO:HD2	1.93	0.51
1:A:729:MET:HA	1:A:729:MET:CE	2.40	0.51
1:A:795:VAL:CG1	1:A:796:ASN:N	2.73	0.51
1:B:550:LYS:O	1:B:554:GLN:HG3	2.11	0.51
1:C:617:THR:HG21	1:C:623:ARG:HA	1.92	0.51
1:A:511:THR:HG22	1:A:512:VAL:N	2.22	0.50
1:C:744:LEU:CD1	1:D:744:LEU:CD1	2.74	0.50
1:D:522:SER:HB3	1:D:525:LEU:HB2	1.94	0.50

Continued on next page...

Continued from previous page...

Atom-1	Atom-2	Interatomic distance (Å)	Clash overlap (Å)
1:D:711:MET:HB3	1:D:712:PRO:HD3	1.92	0.50
1:C:518:ASN:HB2	1:C:794:GLN:NE2	2.27	0.50
1:B:559:MET:HE2	4:B:837:HOH:O	2.11	0.50
1:A:525:LEU:HD13	1:A:782:PHE:CZ	2.47	0.50
1:A:603:ASN:O	1:A:607:ILE:HG13	2.12	0.50
1:C:635:VAL:CG2	1:C:679:LEU:CD2	2.87	0.50
1:B:797:GLN:HB2	4:B:917:HOH:O	2.11	0.49
1:D:619:THR:CG2	1:D:622[B]:ASP:HB3	2.42	0.49
1:C:511:THR:CG2	1:C:593:GLN:HE22	2.25	0.49
1:D:586:ILE:O	1:D:595:ARG:NH1	2.46	0.49
1:A:658:GLN:NE2	1:A:658:GLN:H	2.06	0.49
1:B:607:ILE:HD11	1:B:724:PHE:CD2	2.48	0.49
1:B:670:ARG:NH2	1:B:678:ILE:HG12	2.24	0.49
1:D:698:THR:HG23	1:D:698:THR:O	2.11	0.49
1:A:736:SER:OG	1:A:739:ILE:HD12	2.12	0.49
1:B:732:LYS:HG2	1:B:733:ASN:ND2	2.28	0.49
1:A:713:LEU:O	1:A:717:MET:HG3	2.12	0.48
1:B:732:LYS:HG2	1:B:733:ASN:N	2.28	0.48
1:B:512:VAL:CG2	1:B:513:SER:N	2.77	0.48
1:B:670:ARG:NH2	4:B:923:HOH:O	2.46	0.48
1:B:795:VAL:HG12	1:B:796:ASN:N	2.28	0.48
1:C:614:LEU:HD12	1:C:808:LEU:HD22	1.95	0.48
1:C:559:MET:CE	4:C:920:HOH:O	2.48	0.48
1:D:788:TRP:CE2	1:D:800:ARG:HB3	2.48	0.48
1:C:661:ARG:HH22	1:C:813:ARG:HA	1.76	0.48
1:A:802:GLU:HA	1:A:802:GLU:OE1	2.13	0.47
1:B:586:ILE:CG2	1:B:594:LEU:HD13	2.44	0.47
1:C:566:ILE:HD11	1:C:583:LEU:HD21	1.96	0.47
1:A:736:SER:OG	1:A:739:ILE:CD1	2.62	0.47
1:C:603:ASN:HD21	1:C:723:THR:HA	1.79	0.47
1:B:529:ASN:HD21	1:B:785:ARG:HE	1.62	0.47
1:C:559:MET:HE2	1:C:779:LYS:CA	2.45	0.47
1:B:745:ALA:HB3	2:B:834:POG:C16	2.44	0.47
1:B:795:VAL:CG1	1:B:796:ASN:N	2.77	0.47
1:A:739:ILE:N	1:A:739:ILE:HD12	2.30	0.47
1:B:661:ARG:NH2	1:B:816:GLU:O	2.47	0.47
1:C:524:PHE:HE2	1:C:772:GLU:HG2	1.79	0.47
1:A:557:LEU:HD22	1:A:641:MET:HB3	1.96	0.46
1:B:614:LEU:CD2	1:B:662:LEU:HD11	2.44	0.46
1:D:529:ASN:HB3	1:D:790:SER:HB3	1.97	0.46
1:B:613:ILE:HD11	1:B:630:ILE:CD1	2.45	0.46

Continued on next page...

Continued from previous page...

Atom-1	Atom-2	Interatomic distance (Å)	Clash overlap (Å)
1:B:613:ILE:HD11	1:B:630:ILE:HD12	1.96	0.46
1:A:562:ARG:HH22	1:A:775:ASN:HD21	1.64	0.46
1:B:536:LEU:HB3	1:B:786:LEU:HD11	1.97	0.46
1:B:593:GLN:HA	1:B:593:GLN:HE21	1.81	0.46
1:A:661:ARG:NH2	1:A:816:GLU:O	2.48	0.46
1:C:667:THR:HG23	1:C:671:HIS:HE1	1.80	0.46
1:B:627:LEU:HD11	1:B:654:LEU:HD22	1.98	0.46
1:B:732:LYS:HD3	1:B:733:ASN:ND2	2.31	0.46
1:C:729:MET:O	1:C:731:GLU:HG2	2.15	0.46
1:D:690:LEU:O	1:D:695:ARG:HG2	2.16	0.46
1:B:701:PRO:HB2	4:B:500:HOH:O	2.16	0.46
1:C:655:GLU:HG3	4:C:839:HOH:O	2.15	0.46
1:D:657:PRO:HD2	1:D:725:GLU:OE1	2.16	0.46
1:D:511:THR:CG2	1:D:512:VAL:H	2.21	0.45
1:A:711:MET:HB3	1:A:712:PRO:HD3	1.98	0.45
1:D:689:LYS:HD3	4:D:921:HOH:O	2.16	0.45
1:B:657:PRO:HA	1:B:660:THR:CG2	2.41	0.45
1:D:599:ILE:HD11	1:D:714:VAL:CG1	2.46	0.45
1:D:628:SER:O	1:D:632:GLN:HG3	2.17	0.45
1:C:706:SER:HB3	1:C:761:ALA:HB2	1.98	0.45
1:A:590:HIS:HD2	1:A:590:HIS:H	1.62	0.45
1:A:544:PHE:CZ	1:A:629:LYS:HG3	2.52	0.45
1:B:708:PRO:HG2	1:B:710:LEU:HD21	1.97	0.45
1:A:559:MET:HE3	4:A:843:HOH:O	2.16	0.45
1:A:524:PHE:CE2	1:A:772:GLU:HG2	2.50	0.45
1:A:516:ARG:HA	1:A:517:PRO:HD2	1.80	0.44
1:A:530:LYS:HB3	1:A:530:LYS:HE2	1.76	0.44
1:A:555:HIS:CD2	1:A:774:MET:CG	3.00	0.44
1:C:805:ASN:C	1:C:805:ASN:HD22	2.21	0.44
1:A:572:GLU:O	1:A:576:ASN:HB2	2.17	0.44
1:B:564:ALA:O	1:B:582:GLY:HA3	2.17	0.44
1:D:523:LYS:CE	1:D:772:GLU:OE1	2.65	0.44
1:D:541:LYS:HE2	1:D:616:CYS:O	2.16	0.44
1:A:586:ILE:HG23	1:A:594:LEU:HD13	1.99	0.44
1:A:591:GLY:HA2	4:A:844:HOH:O	2.16	0.44
1:A:670:ARG:NH2	4:A:905:HOH:O	2.50	0.44
1:C:680:TYR:HA	1:C:684:LEU:HB2	1.99	0.44
1:D:599:ILE:HD11	1:D:714:VAL:HG12	1.99	0.44
1:B:599:ILE:HD11	1:B:714:VAL:HG12	1.98	0.44
4:B:868:HOH:O	1:D:756:SER:HB3	2.18	0.44
1:B:745:ALA:CB	2:B:834:POG:C16	2.96	0.44

Continued on next page...

Continued from previous page...

Atom-1	Atom-2	Interatomic distance (Å)	Clash overlap (Å)
1:A:731:GLU:O	1:A:732:LYS:C	2.57	0.43
1:D:795:VAL:CG1	1:D:796:ASN:N	2.81	0.43
1:A:555:HIS:CD2	1:A:774:MET:HG2	2.54	0.43
1:B:518:ASN:HD21	1:B:791:LYS:HA	1.83	0.43
1:D:534:THR:HG23	1:D:535:ALA:N	2.33	0.43
1:D:689:LYS:HE3	1:D:693:GLU:OE2	2.18	0.43
2:B:834:POG:H183	1:D:697:SER:CB	2.48	0.43
1:A:817:PRO:HA	1:A:818:PRO:HD3	1.89	0.43
1:C:539:ARG:O	1:C:542:GLU:HB2	2.18	0.43
1:C:586:ILE:O	1:C:595:ARG:NH1	2.48	0.43
1:A:700:VAL:HA	1:A:701:PRO:HD3	1.85	0.43
1:A:530:LYS:CG	1:A:533:GLU:CG	2.95	0.43
1:B:592:HIS:HA	1:B:595:ARG:NH2	2.34	0.43
1:B:696:GLU:HB3	4:B:836:HOH:O	2.18	0.43
1:B:700:VAL:HA	1:B:701:PRO:HD3	1.81	0.43
1:C:523:LYS:HE3	1:C:772:GLU:OE2	2.19	0.42
1:D:780:THR:O	1:D:784:MET:HG3	2.19	0.42
1:A:573:MET:O	1:A:577:MET:HG3	2.19	0.42
1:B:559:MET:CE	4:B:837:HOH:O	2.66	0.42
1:B:745:ALA:HB3	2:B:834:POG:H162	2.01	0.42
1:C:776:GLU:OE2	1:C:779:LYS:HE3	2.19	0.42
1:D:524:PHE:CD1	1:D:773:GLU:HG3	2.54	0.42
1:D:713:LEU:HD22	1:D:747:ALA:HB2	2.01	0.42
1:D:729:MET:CE	1:D:729:MET:HA	2.49	0.42
1:C:548:ASP:OD1	1:C:548:ASP:C	2.57	0.42
1:C:648:SER:HA	4:C:869:HOH:O	2.18	0.42
1:A:555:HIS:CG	1:A:774:MET:CG	3.03	0.42
1:C:530:LYS:HE2	1:C:530:LYS:HB2	1.58	0.42
1:C:559:MET:HE1	1:C:779:LYS:HG2	1.97	0.42
1:B:529:ASN:ND2	1:B:785:ARG:NH2	2.53	0.42
1:B:558:SER:O	1:B:562:ARG:HD3	2.19	0.42
1:C:557:LEU:HD22	1:C:641:MET:HB3	2.01	0.42
1:A:690:LEU:HD23	1:A:690:LEU:HA	1.63	0.42
2:B:834:POG:H152	2:B:834:POG:H173	1.75	0.42
1:C:683:GLN:NE2	1:C:683:GLN:HA	2.22	0.42
1:D:594:LEU:HA	1:D:594:LEU:HD23	1.79	0.42
1:A:789:GLY:O	1:A:793:ALA:HB2	2.20	0.41
1:C:605:MET:O	1:C:609:ILE:HG12	2.20	0.41
1:A:533:GLU:O	1:A:537:LEU:HG	2.20	0.41
1:A:631:ILE:HD13	1:A:680:TYR:HB2	2.01	0.41
1:D:526:PRO:HA	1:D:527:PRO:HD2	1.71	0.41

Continued on next page...

Continued from previous page...

Atom-1	Atom-2	Interatomic distance (Å)	Clash overlap (Å)
1:D:543:LEU:HD21	1:D:774:MET:HA	2.02	0.41
1:D:803:LYS:O	1:D:807:ILE:HG13	2.20	0.41
1:C:511:THR:OG1	1:C:512:VAL:N	2.53	0.41
1:C:526:PRO:O	1:C:529:ASN:HB3	2.20	0.41
1:A:585:LEU:HD23	1:A:594:LEU:HD12	2.02	0.41
1:B:681:GLU:HG2	4:B:859:HOH:O	2.20	0.41
1:C:511:THR:HG23	1:C:512:VAL:O	2.20	0.41
1:D:599:ILE:HG13	1:D:714:VAL:CG1	2.50	0.41
1:B:539:ARG:C	1:B:539:ARG:HD2	2.37	0.41
1:B:523:LYS:HE3	1:B:772:GLU:OE2	2.20	0.41
1:B:511:THR:HG21	4:B:894:HOH:O	2.19	0.41
1:B:736:SER:C	1:B:740:MET:HE2	2.41	0.41
1:C:543:LEU:HA	1:C:543:LEU:HD23	1.85	0.41
1:C:536:LEU:HB3	1:C:786:LEU:HD21	2.01	0.41
1:C:780:THR:O	1:C:784:MET:HG3	2.20	0.41
1:D:692:HIS:CD2	4:D:908:HOH:O	2.64	0.41
1:B:620:LEU:HD11	1:B:665:THR:HA	2.03	0.41
1:B:669:LEU:HG	1:B:677:ALA:HB2	2.03	0.41
1:B:814:LYS:HD2	1:B:814:LYS:HA	1.88	0.41
1:C:701:PRO:HB2	4:C:834:HOH:O	2.21	0.41
1:D:619:THR:HG23	1:D:622[B]:ASP:HB3	2.03	0.41
1:B:748:ARG:HH11	1:B:748:ARG:CB	2.33	0.41
1:B:786:LEU:HD12	1:B:786:LEU:HA	1.94	0.41
1:D:595:ARG:HG2	1:D:714:VAL:HG22	2.03	0.41
1:A:595:ARG:HG2	1:A:714:VAL:HG22	2.03	0.41
1:B:652:LYS:CE	1:B:727:THR:OG1	2.66	0.41
1:D:708:PRO:HB3	4:D:852:HOH:O	2.20	0.41
1:B:594:LEU:HA	1:B:594:LEU:HD23	1.95	0.41
1:A:574:ARG:CB	1:A:574:ARG:CZ	3.00	0.40
1:B:614:LEU:HD11	1:B:659:ILE:HD13	2.03	0.40
1:B:658:GLN:HE21	1:B:658:GLN:N	2.07	0.40
1:B:732:LYS:HD3	1:B:733:ASN:HD22	1.86	0.40
1:B:617:THR:HG21	1:B:623:ARG:HA	2.02	0.40
1:D:729:MET:HA	1:D:729:MET:HE2	2.02	0.40
1:A:560:ASP:OD2	1:A:643:ASP:OD2	2.39	0.40
1:B:652:LYS:HE3	1:B:727:THR:HG21	2.03	0.40
1:D:619:THR:HG22	1:D:622[B]:ASP:HB3	2.02	0.40
1:A:715:THR:CG2	1:A:730:TRP:CD1	3.04	0.40
1:B:715:THR:HG21	1:B:728:ASP:HB3	2.02	0.40
1:C:586:ILE:CG2	1:C:594:LEU:HD13	2.51	0.40

There are no symmetry-related clashes.

5.3 Torsion angles

5.3.1 Protein backbone

In the following table, the Percentiles column shows the percent Ramachandran outliers of the chain as a percentile score with respect to all X-ray entries followed by that with respect to entries of similar resolution.

The Analysed column shows the number of residues for which the backbone conformation was analysed, and the total number of residues.

Mol	Chain	Analysed	Favoured	Allowed	Outliers	Percentiles	
1	A	307/333 (92%)	292 (95%)	14 (5%)	1 (0%)	44	60
1	B	309/333 (93%)	295 (96%)	14 (4%)	0	100	100
1	C	307/333 (92%)	291 (95%)	15 (5%)	1 (0%)	44	60
1	D	308/333 (92%)	293 (95%)	14 (4%)	1 (0%)	44	60
All	All	1231/1332 (92%)	1171 (95%)	57 (5%)	3 (0%)	51	67

All (3) Ramachandran outliers are listed below:

Mol	Chain	Res	Type
1	D	616	CYS
1	A	732	LYS
1	C	615	GLY

5.3.2 Protein sidechains

In the following table, the Percentiles column shows the percent sidechain outliers of the chain as a percentile score with respect to all X-ray entries followed by that with respect to entries of similar resolution.

The Analysed column shows the number of residues for which the sidechain conformation was analysed, and the total number of residues.

Mol	Chain	Analysed	Rotameric	Outliers	Percentiles	
1	A	273/295 (92%)	258 (94%)	15 (6%)	25	40
1	B	275/295 (93%)	257 (94%)	18 (6%)	20	31
1	C	273/295 (92%)	255 (93%)	18 (7%)	19	30
1	D	274/295 (93%)	259 (94%)	15 (6%)	25	40
All	All	1095/1180 (93%)	1029 (94%)	66 (6%)	23	35

All (66) residues with a non-rotameric sidechain are listed below:

Mol	Chain	Res	Type
1	A	534	THR
1	A	544	PHE
1	A	593	GLN
1	A	594	LEU
1	A	658	GLN
1	A	660	THR
1	A	684	LEU
1	A	715	THR
1	A	720	GLN
1	A	741	LEU
1	A	755	ASP
1	A	759	MET
1	A	762	GLU
1	A	769	GLN
1	A	791	LYS
1	B	513	SER
1	B	534	THR
1	B	593	GLN
1	B	594	LEU
1	B	629	LYS
1	B	658	GLN
1	B	670	ARG
1	B	675[A]	GLN
1	B	675[B]	GLN
1	B	683	GLN
1	B	684	LEU
1	B	700	VAL
1	B	720	GLN
1	B	736	SER
1	B	741	LEU
1	B	748	ARG
1	B	771	ASP
1	B	813	ARG
1	C	529	ASN
1	C	530	LYS
1	C	534	THR
1	C	548	ASP
1	C	594	LEU
1	C	617	THR
1	C	629	LYS
1	C	660	THR
1	C	679	LEU
1	C	683	GLN

Continued on next page...

Continued from previous page...

Mol	Chain	Res	Type
1	C	700	VAL
1	C	715	THR
1	C	731	GLU
1	C	736	SER
1	C	741	LEU
1	C	769	GLN
1	C	794	GLN
1	C	805	ASN
1	D	539	ARG
1	D	548	ASP
1	D	594	LEU
1	D	617	THR
1	D	658	GLN
1	D	661	ARG
1	D	683	GLN
1	D	698	THR
1	D	700	VAL
1	D	711	MET
1	D	759	MET
1	D	777	ILE
1	D	781[A]	GLU
1	D	781[B]	GLU
1	D	794	GLN

Some sidechains can be flipped to improve hydrogen bonding and reduce clashes. All (28) such sidechains are listed below:

Mol	Chain	Res	Type
1	A	518	ASN
1	A	529	ASN
1	A	590	HIS
1	A	593	GLN
1	A	658	GLN
1	A	671	HIS
1	A	704	ASN
1	A	775	ASN
1	A	794	GLN
1	B	518	ASN
1	B	529	ASN
1	B	590	HIS
1	B	593	GLN
1	B	658	GLN
1	B	683	GLN

Continued on next page...

Continued from previous page...

Mol	Chain	Res	Type
1	B	733	ASN
1	B	775	ASN
1	C	518	ASN
1	C	593	GLN
1	C	672	GLN
1	C	675	GLN
1	C	683	GLN
1	C	775	ASN
1	C	794	GLN
1	C	805	ASN
1	D	658	GLN
1	D	683	GLN
1	D	692	HIS

5.3.3 RNA [i](#)

There are no RNA molecules in this entry.

5.4 Non-standard residues in protein, DNA, RNA chains [i](#)

There are no non-standard protein/DNA/RNA residues in this entry.

5.5 Carbohydrates [i](#)

There are no carbohydrates in this entry.

5.6 Ligand geometry [i](#)

Of 10 ligands modelled in this entry, 8 are unknown - leaving 2 for Mogul analysis.

In the following table, the Counts columns list the number of bonds (or angles) for which Mogul statistics could be retrieved, the number of bonds (or angles) that are observed in the model and the number of bonds (or angles) that are defined in the chemical component dictionary. The Link column lists molecule types, if any, to which the group is linked. The Z score for a bond length (or angle) is the number of standard deviations the observed value is removed from the expected value. A bond length (or angle) with $|Z| > 2$ is considered an outlier worth inspection. RMSZ is the root-mean-square of all Z scores of the bond lengths (or angles).

Mol	Type	Chain	Res	Link	Bond lengths			Bond angles		
					Counts	RMSZ	$\# Z > 2$	Counts	RMSZ	$\# Z > 2$
2	POG	A	834	-	15,15,28	1.85	2 (13%)	13,17,34	2.57	7 (53%)

Mol	Type	Chain	Res	Link	Bond lengths			Bond angles		
					Counts	RMSZ	# Z > 2	Counts	RMSZ	# Z > 2
2	POG	B	834	-	16,16,28	2.27	5 (31%)	13,19,34	2.27	5 (38%)

In the following table, the Chirals column lists the number of chiral outliers, the number of chiral centers analysed, the number of these observed in the model and the number defined in the chemical component dictionary. Similar counts are reported in the Torsion and Rings columns. '-' means no outliers of that kind were identified.

Mol	Type	Chain	Res	Link	Chirals	Torsions	Rings
2	POG	A	834	-	-	0/16/16/32	0/0/0/0
2	POG	B	834	-	-	0/17/17/32	0/0/0/0

All (7) bond length outliers are listed below:

Mol	Chain	Res	Type	Atoms	Z	Observed(Å)	Ideal(Å)
2	B	834	POG	O6-C12	-4.64	1.39	1.43
2	A	834	POG	O5-C10	-4.64	1.39	1.43
2	B	834	POG	O5-C10	-4.36	1.39	1.43
2	B	834	POG	O7-C14	-4.02	1.39	1.43
2	A	834	POG	O6-C12	-3.48	1.40	1.43
2	B	834	POG	C13-C14	2.02	1.55	1.50
2	B	834	POG	C9-C10	3.27	1.55	1.51

All (12) bond angle outliers are listed below:

Mol	Chain	Res	Type	Atoms	Z	Observed(°)	Ideal(°)
2	A	834	POG	C13-O6-C12	2.13	120.23	115.34
2	A	834	POG	O3-C7-C8	2.43	118.48	111.76
2	B	834	POG	O5-C11-C12	2.85	117.77	110.99
2	A	834	POG	O4-C9-C10	2.87	117.82	110.99
2	B	834	POG	O6-C13-C14	2.99	118.10	110.99
2	A	834	POG	O6-C13-C14	3.04	118.67	109.94
2	B	834	POG	C11-O5-C10	3.11	119.78	115.07
2	A	834	POG	O5-C11-C12	3.36	118.98	110.99
2	A	834	POG	C9-O4-C8	3.42	120.24	115.07
2	B	834	POG	O7-C15-C5	3.83	116.40	108.92
2	B	834	POG	O4-C9-C10	3.88	122.49	111.76
2	A	834	POG	C11-O5-C10	5.34	123.14	115.07

There are no chirality outliers.

There are no torsion outliers.

There are no ring outliers.

1 monomer is involved in 7 short contacts:

Mol	Chain	Res	Type	Clashes	Symm-Clashes
2	B	834	POG	7	0

5.7 Other polymers [i](#)

There are no such residues in this entry.

5.8 Polymer linkage issues [i](#)

There are no chain breaks in this entry.

6 Fit of model and data ⓘ

6.1 Protein, DNA and RNA chains ⓘ

In the following table, the column labelled ‘#RSRZ > 2’ contains the number (and percentage) of RSRZ outliers, followed by percent RSRZ outliers for the chain as percentile scores relative to all X-ray entries and entries of similar resolution. The OWAB column contains the minimum, median, 95th percentile and maximum values of the occupancy-weighted average B-factor per residue. The column labelled ‘Q < 0.9’ lists the number of (and percentage) of residues with an average occupancy less than 0.9.

Mol	Chain	Analysed	<RSRZ>	#RSRZ>2	OWAB(Å ²)	Q<0.9
1	A	308/333 (92%)	-0.40	7 (2%) 61 58	16, 37, 80, 125	0
1	B	308/333 (92%)	-0.36	9 (2%) 52 50	15, 38, 76, 125	0
1	C	308/333 (92%)	-0.45	5 (1%) 72 70	17, 37, 69, 129	0
1	D	308/333 (92%)	-0.44	2 (0%) 89 87	16, 39, 75, 123	0
All	All	1232/1332 (92%)	-0.41	23 (1%) 67 64	15, 38, 76, 129	0

All (23) RSRZ outliers are listed below:

Mol	Chain	Res	Type	RSRZ
1	C	511	THR	7.2
1	D	511	THR	6.6
1	B	733	ASN	5.9
1	C	616	CYS	4.7
1	B	732	LYS	4.2
1	A	511	THR	3.7
1	B	616	CYS	3.5
1	A	791	LYS	3.2
1	B	527	PRO	2.8
1	C	618	GLY	2.7
1	D	512	VAL	2.6
1	A	528	GLU	2.5
1	A	618	GLY	2.4
1	A	516	ARG	2.3
1	B	511	THR	2.3
1	B	726	GLY	2.2
1	C	528	GLU	2.2
1	B	518	ASN	2.1
1	A	616	CYS	2.1
1	B	512	VAL	2.1
1	A	732	LYS	2.1

Continued on next page...

Continued from previous page...

Mol	Chain	Res	Type	RSRZ
1	C	534	THR	2.1
1	B	516	ARG	2.0

6.2 Non-standard residues in protein, DNA, RNA chains [i](#)

There are no non-standard protein/DNA/RNA residues in this entry.

6.3 Carbohydrates [i](#)

There are no carbohydrates in this entry.

6.4 Ligands [i](#)

In the following table, the Atoms column lists the number of modelled atoms in the group and the number defined in the chemical component dictionary. LLDF column lists the quality of electron density of the group with respect to its neighbouring residues in protein, DNA or RNA chains. The B-factors column lists the minimum, median, 95th percentile and maximum values of B factors of atoms in the group. The column labelled 'Q< 0.9' lists the number of atoms with occupancy less than 0.9.

Mol	Type	Chain	Res	Atoms	RSCC	RSR	LLDF	B-factors(Å ²)	Q<0.9
3	UNX	D	835	1/1	0.91	0.49	29.62	42,42,42,42	0
3	UNX	D	841	1/1	0.76	0.69	25.90	47,47,47,47	0
3	UNX	D	834	1/1	0.92	0.50	17.14	51,51,51,51	0
2	POG	B	834	17/29	0.92	0.16	2.70	37,54,64,67	0
2	POG	A	834	16/29	0.83	0.19	1.84	23,54,74,75	0
3	UNX	D	837	1/1	0.93	0.47	-	43,43,43,43	0
3	UNX	D	839	1/1	0.87	0.42	-	33,33,33,33	0
3	UNX	D	840	1/1	0.84	0.63	-	41,41,41,41	0
3	UNX	D	836	1/1	0.82	0.53	-	39,39,39,39	0
3	UNX	D	838	1/1	0.92	0.45	-	35,35,35,35	0

6.5 Other polymers [i](#)

There are no such residues in this entry.