



Full wwPDB X-ray Structure Validation Report ⓘ

Feb 14, 2017 – 06:51 am GMT

PDB ID : 5T7B
Title : Argonaute-2 - 5'-(E)-vinylphosphonate 2'-O-methyl-uridine modified mrTTR
guide RNA complex
Authors : Elkayam, E.; Joshua-Tor, L.
Deposited on : 2016-09-02
Resolution : 2.53 Å(reported)

This is a Full wwPDB X-ray Structure Validation Report for a publicly released PDB entry.

We welcome your comments at validation@mail.wwpdb.org

A user guide is available at

<http://wwpdb.org/validation/2016/XrayValidationReportHelp>

with specific help available everywhere you see the ⓘ symbol.

The following versions of software and data (see [references ⓘ](#)) were used in the production of this report:

MolProbity : 4.02b-467
Mogul : 1.7.2 (RC1), CSD as538be (2017)
Xtriage (Phenix) : 1.9-1692
EDS : trunk28620
Percentile statistics : 20161228.v01 (using entries in the PDB archive December 28th 2016)
Refmac : 5.8.0135
CCP4 : 6.5.0
Ideal geometry (proteins) : Engh & Huber (2001)
Ideal geometry (DNA, RNA) : Parkinson et al. (1996)
Validation Pipeline (wwPDB-VP) : recalc28949

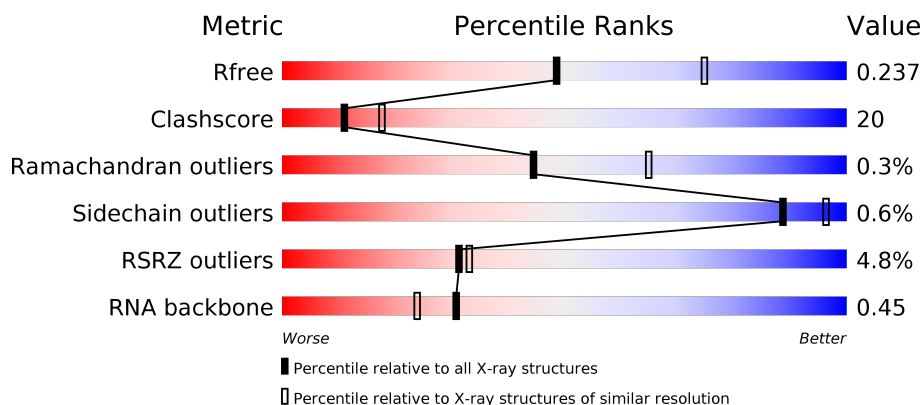
1 Overall quality at a glance

The following experimental techniques were used to determine the structure:

X-RAY DIFFRACTION



The reported resolution of this entry is 2.53 Å.

Percentile scores (ranging between 0-100) for global validation metrics of the entry are shown in the following graphic. The table shows the number of entries on which the scores are based.



Metric	Whole archive (#Entries)	Similar resolution (#Entries, resolution range(Å))
R_{free}	100719	4636 (2.54-2.50)
Clashscore	112137	5382 (2.54-2.50)
Ramachandran outliers	110173	5282 (2.54-2.50)
Sidechain outliers	110143	5284 (2.54-2.50)
RSRZ outliers	101464	4669 (2.54-2.50)
RNA backbone	2435	1035 (2.94-2.10)

The table below summarises the geometric issues observed across the polymeric chains and their fit to the electron density. The red, orange, yellow and green segments on the lower bar indicate the fraction of residues that contain outliers for ≥ 3 , 2, 1 and 0 types of geometric quality criteria. A grey segment represents the fraction of residues that are not modelled. The numeric value for each fraction is indicated below the corresponding segment, with a dot representing fractions $\leq 5\%$. The upper red bar (where present) indicates the fraction of residues that have poor fit to the electron density. The numeric value is given above the bar.

Mol	Chain	Length	Quality of chain
1	R	21	
2	A	861	

The following table lists non-polymeric compounds, carbohydrate monomers and non-standard residues in protein, DNA, RNA chains that are outliers for geometric or electron-density-fit criteria:

Mol	Type	Chain	Res	Chirality	Geometry	Clashes	Electron density
3	IPH	A	901	-	-	-	X
3	IPH	A	902	-	-	-	X

2 Entry composition

There are 4 unique types of molecules in this entry. The entry contains 6714 atoms, of which 12 are hydrogens and 0 are deuteriums.

In the tables below, the ZeroOcc column contains the number of atoms modelled with zero occupancy, the AltConf column contains the number of residues with at least one atom in alternate conformation and the Trace column contains the number of residues modelled with at most 2 atoms.

- Molecule 1 is a RNA chain called RNA (UVP)UAUAGAGCAAGAACACUGUU.

Mol	Chain	Residues	Atoms					ZeroOcc	AltConf	Trace
1	R	11	Total	C	N	O	P	0	0	0
			236	107	41	77	11			

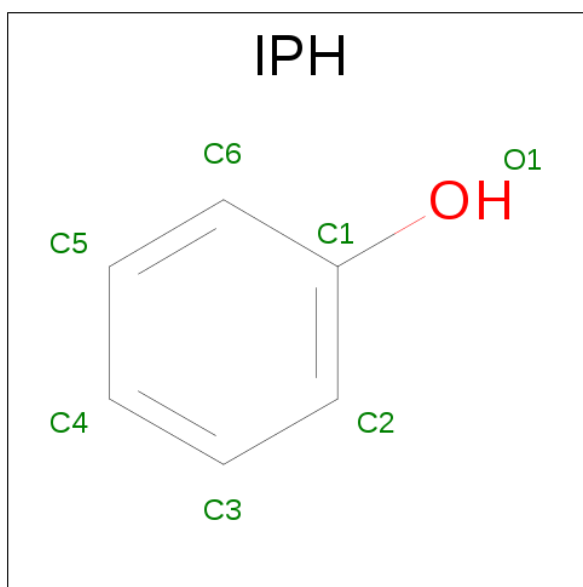
- Molecule 2 is a protein called Protein argonaute-2.

Mol	Chain	Residues	Atoms					ZeroOcc	AltConf	Trace
2	A	802	Total	C	N	O	S	0	0	0
			6443	4104	1163	1136	40			

There are 4 discrepancies between the modelled and reference sequences:

Chain	Residue	Modelled	Actual	Comment	Reference
A	-1	GLY	-	expression tag	UNP Q9UKV8
A	0	ALA	-	expression tag	UNP Q9UKV8
A	597	ASN	ASP	engineered mutation	UNP Q9UKV8
A	669	ASN	ASP	engineered mutation	UNP Q9UKV8

- Molecule 3 is PHENOL (three-letter code: IPH) (formula: C₆H₆O).



Mol	Chain	Residues	Atoms				ZeroOcc	AltConf
3	A	1	Total	C	H	O	0	0
			13	6	6	1		
3	A	1	Total	C	H	O	0	0
			13	6	6	1		

- Molecule 4 is water.

Mol	Chain	Residues	Atoms		ZeroOcc	AltConf
4	A	9	Total	O	0	0
			9	9		

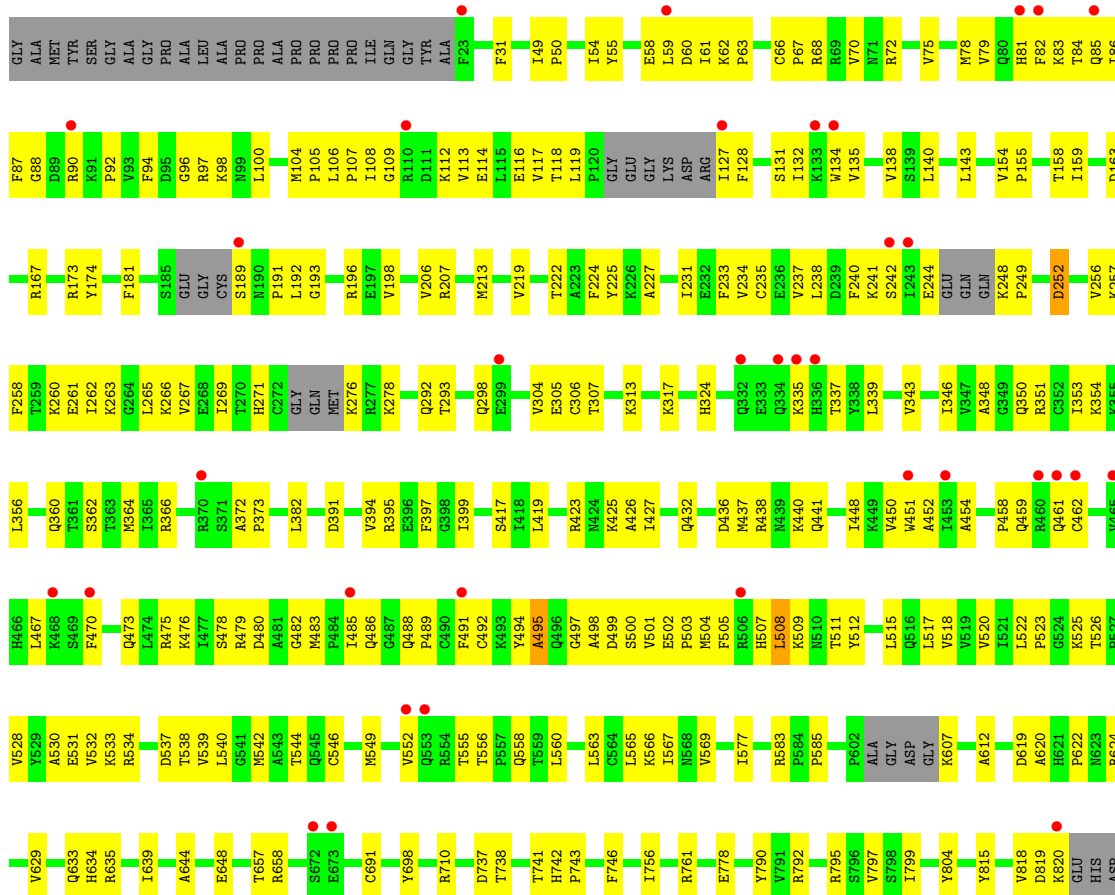
3 Residue-property plots

These plots are drawn for all protein, RNA and DNA chains in the entry. The first graphic for a chain summarises the proportions of the various outlier classes displayed in the second graphic. The second graphic shows the sequence view annotated by issues in geometry and electron density. Residues are color-coded according to the number of geometric quality criteria for which they contain at least one outlier: green = 0, yellow = 1, orange = 2 and red = 3 or more. A red dot above a residue indicates a poor fit to the electron density ($RSRZ > 2$). Stretches of 2 or more consecutive residues without any outlier are shown as a green connector. Residues present in the sample, but not in the model, are shown in grey.

- Molecule 1: RNA (UVP)UAUAGAGCAAGAACACUGUU



- Molecule 2: Protein argonaute-2



Sequence logo for the 10th position. The y-axis represents information content in bits, ranging from 0 to 0.4. The x-axis shows amino acids: SER, ALA, GLU, GLY, HIS, THR, SER, GLY, GLN, SER, ASN, GLY. The bars for SER, GLY, and GLN are highlighted in grey. A red dot is present above the GLY bar at approximately 0.35 bits. The bar for Q850 is highlighted in yellow and has a red dot above it at approximately 0.35 bits. The bar for R837 is highlighted in yellow and has a red dot above it at approximately 0.35 bits. The bar for V846 is highlighted in yellow and has a red dot above it at approximately 0.35 bits. The bar for Q847 is highlighted in yellow and has a red dot above it at approximately 0.35 bits. The bar for V848 is highlighted in yellow and has a red dot above it at approximately 0.35 bits. The bar for H849 is highlighted in yellow and has a red dot above it at approximately 0.35 bits. The bar for L853 is highlighted in yellow and has a red dot above it at approximately 0.35 bits. The bar for R854 is highlighted in yellow and has a red dot above it at approximately 0.35 bits. The bar for T855 is highlighted in yellow and has a red dot above it at approximately 0.35 bits. The bar for M856 is highlighted in yellow and has a red dot above it at approximately 0.35 bits. The bar for A859 is highlighted in yellow and has a red dot above it at approximately 0.35 bits.

4 Data and refinement statistics

Property	Value	Source
Space group	P 1 21 1	Depositor
Cell constants a, b, c, α , β , γ	63.21Å 108.31Å 68.82Å 90.00° 106.62° 90.00°	Depositor
Resolution (Å)	65.95 – 2.53 65.95 – 2.53	Depositor EDS
% Data completeness (in resolution range)	93.3 (65.95-2.53) 93.4 (65.95-2.53)	Depositor EDS
R_{merge}	0.07	Depositor
R_{sym}	(Not available)	Depositor
$\langle I/\sigma(I) \rangle$ ¹	1.78 (at 2.51Å)	Xtriage
Refinement program	PHENIX (1.10.1_2155: ???)	Depositor
R, R_{free}	0.194 , 0.238 0.193 , 0.237	Depositor DCC
R_{free} test set	1367 reflections (4.93%)	DCC
Wilson B-factor (Å ²)	49.9	Xtriage
Anisotropy	0.316	Xtriage
Bulk solvent k_{sol} (e/Å ³), B_{sol} (Å ²)	0.33 , 53.9	EDS
L-test for twinning ²	$\langle L \rangle = 0.49$, $\langle L^2 \rangle = 0.33$	Xtriage
Estimated twinning fraction	No twinning to report.	Xtriage
F_o, F_c correlation	0.94	EDS
Total number of atoms	6714	wwPDB-VP
Average B, all atoms (Å ²)	68.0	wwPDB-VP

Xtriage's analysis on translational NCS is as follows: *The largest off-origin peak in the Patterson function is 4.32% of the height of the origin peak. No significant pseudotranslation is detected.*

¹Intensities estimated from amplitudes.

²Theoretical values of $\langle |L| \rangle$, $\langle L^2 \rangle$ for acentric reflections are 0.5, 0.333 respectively for untwinned datasets, and 0.375, 0.2 for perfectly twinned datasets.

5 Model quality

5.1 Standard geometry

Bond lengths and bond angles in the following residue types are not validated in this section: UVP, IPH

The Z score for a bond length (or angle) is the number of standard deviations the observed value is removed from the expected value. A bond length (or angle) with $|Z| > 5$ is considered an outlier worth inspection. RMSZ is the root-mean-square of all Z scores of the bond lengths (or angles).

Mol	Chain	Bond lengths		Bond angles	
		RMSZ	$\# Z > 5$	RMSZ	$\# Z > 5$
1	R	0.22	0/238	0.68	0/366
2	A	0.27	0/6594	0.44	0/8921
All	All	0.27	0/6832	0.45	0/9287

There are no bond length outliers.

There are no bond angle outliers.

There are no chirality outliers.

There are no planarity outliers.

5.2 Too-close contacts

In the following table, the Non-H and H(model) columns list the number of non-hydrogen atoms and hydrogen atoms in the chain respectively. The H(added) column lists the number of hydrogen atoms added and optimized by MolProbity. The Clashes column lists the number of clashes within the asymmetric unit, whereas Symm-Clashes lists symmetry related clashes.

Mol	Chain	Non-H	H(model)	H(added)	Clashes	Symm-Clashes
1	R	236	0	109	15	0
2	A	6443	0	6522	265	0
3	A	14	12	12	0	0
4	A	9	0	0	1	0
All	All	6702	12	6643	268	0

The all-atom clashscore is defined as the number of clashes found per 1000 atoms (including hydrogen atoms). The all-atom clashscore for this structure is 20.

All (268) close contacts within the same asymmetric unit are listed below, sorted by their clash magnitude.

Atom-1	Atom-2	Interatomic distance (Å)	Clash overlap (Å)
2:A:505:PHE:HA	2:A:508:LEU:HD12	1.40	1.02
2:A:112:LYS:HD2	2:A:131:SER:HB2	1.41	0.97
2:A:269:ILE:HD11	2:A:339:LEU:HD13	1.48	0.94
2:A:540:LEU:HD13	2:A:542:MET:HE3	1.50	0.94
2:A:62:LYS:HD2	2:A:63:PRO:HA	1.52	0.91
2:A:526:THR:HG22	2:A:528:VAL:H	1.36	0.89
2:A:569:VAL:O	2:A:624:ARG:NH2	2.07	0.87
2:A:66:CYS:HB3	2:A:70:VAL:HG21	1.58	0.86
2:A:539:VAL:HG12	2:A:540:LEU:HG	1.56	0.86
2:A:452:ALA:HB1	2:A:491:PHE:O	1.76	0.85
2:A:530:ALA:HB1	2:A:818:VAL:HG21	1.63	0.81
2:A:62:LYS:HD2	2:A:63:PRO:CA	2.10	0.80
2:A:534:ARG:O	2:A:538:THR:HG22	1.82	0.79
2:A:437:MET:HE1	2:A:565:LEU:HD21	1.62	0.79
2:A:59:LEU:O	2:A:98:LYS:HD2	1.82	0.78
2:A:452:ALA:HB3	2:A:491:PHE:CZ	2.18	0.78
1:R:1:UVP:C6'	2:A:546:CYS:HB2	2.14	0.78
1:R:8:G:OP2	2:A:761:ARG:NH2	2.17	0.78
2:A:478:SER:OG	2:A:483:MET:O	2.01	0.77
2:A:196:ARG:HH21	2:A:356:LEU:HD23	1.49	0.77
2:A:437:MET:CE	2:A:565:LEU:HD21	2.14	0.76
2:A:583:ARG:NH1	2:A:620:ALA:O	2.19	0.76
2:A:528:VAL:O	2:A:532:VAL:HG23	1.86	0.75
2:A:97:ARG:O	2:A:98:LYS:HD3	1.87	0.75
2:A:540:LEU:CD1	2:A:542:MET:HE3	2.16	0.75
2:A:66:CYS:HB3	2:A:70:VAL:CG2	2.17	0.74
2:A:237:VAL:CG1	2:A:261:GLU:HG3	2.18	0.74
2:A:108:ILE:HG22	2:A:109:GLY:O	1.87	0.73
2:A:155:PRO:HG2	2:A:158:THR:HG21	1.71	0.73
2:A:317:LYS:HE2	2:A:317:LYS:HA	1.69	0.73
2:A:509:LYS:HB2	2:A:542:MET:CE	2.19	0.72
2:A:241:LYS:HG3	2:A:242:SER:H	1.54	0.72
2:A:459:GLN:HA	2:A:462:CYS:O	1.90	0.72
2:A:566:LYS:NZ	2:A:859:ALA:OXT	2.19	0.72
2:A:462:CYS:SG	2:A:549:MET:HG3	2.30	0.72
2:A:252:ASP:O	2:A:256:VAL:HG12	1.90	0.71
2:A:155:PRO:O	2:A:158:THR:HG22	1.90	0.71
2:A:505:PHE:HB3	2:A:540:LEU:CD1	2.21	0.71
2:A:75:VAL:O	2:A:79:VAL:HG23	1.91	0.71
1:R:9:C:OP1	2:A:351:ARG:NH1	2.23	0.71
2:A:756:ILE:HD11	2:A:795:ARG:NH2	2.04	0.71
2:A:532:VAL:HG12	2:A:544:THR:HG21	1.73	0.71

Continued on next page...

Continued from previous page...

Atom-1	Atom-2	Interatomic distance (Å)	Clash overlap (Å)
2:A:441:GLN:HB2	2:A:482:GLY:HA3	1.72	0.70
1:R:1:UVP:O4	2:A:525:LYS:HA	1.91	0.70
2:A:624:ARG:HH12	2:A:855:THR:HG23	1.56	0.70
2:A:244:GLU:N	2:A:244:GLU:OE1	2.25	0.70
2:A:248:LYS:HB2	2:A:249:PRO:HD3	1.73	0.70
2:A:475:ARG:HG2	2:A:485:ILE:HD11	1.72	0.70
2:A:335:LYS:O	2:A:335:LYS:HD3	1.92	0.69
2:A:853:LEU:HD12	2:A:854:ARG:N	2.07	0.69
2:A:155:PRO:HG2	2:A:158:THR:CG2	2.24	0.67
2:A:335:LYS:HD2	2:A:337:THR:OG1	1.94	0.67
2:A:90:ARG:HD2	2:A:90:ARG:N	2.09	0.67
2:A:530:ALA:CB	2:A:818:VAL:HG21	2.24	0.66
2:A:266:LYS:HD2	2:A:350:GLN:OE1	1.94	0.66
1:R:10:A:N7	2:A:353:ILE:HG21	2.11	0.66
2:A:225:TYR:OH	2:A:354:LYS:NZ	2.28	0.66
2:A:67:PRO:O	2:A:70:VAL:HG22	1.96	0.66
2:A:555:THR:HG21	2:A:560:LEU:HD11	1.78	0.65
2:A:644:ALA:O	2:A:648:GLU:HG3	1.96	0.65
2:A:116:GLU:OE1	2:A:116:GLU:N	2.30	0.65
2:A:475:ARG:HA	2:A:485:ILE:HD11	1.78	0.65
2:A:82:PHE:O	2:A:86:ILE:N	2.26	0.65
2:A:451:TRP:O	2:A:452:ALA:HB2	1.95	0.65
2:A:491:PHE:CE1	2:A:508:LEU:HD22	2.31	0.65
2:A:538:THR:OG1	2:A:847:GLN:O	2.14	0.64
2:A:467:LEU:HD23	2:A:492:CYS:SG	2.37	0.64
2:A:143:LEU:HD13	2:A:158:THR:HG21	1.79	0.64
2:A:266:LYS:HD2	2:A:266:LYS:H	1.62	0.64
2:A:90:ARG:H	2:A:90:ARG:HD2	1.62	0.64
2:A:499:ASP:O	2:A:503:PRO:HD2	1.98	0.64
2:A:237:VAL:HG13	2:A:261:GLU:HG3	1.80	0.63
2:A:819:ASP:OD2	2:A:820:LYS:HG3	1.98	0.63
2:A:237:VAL:HG11	2:A:261:GLU:HG3	1.81	0.63
2:A:633:GLN:HG2	2:A:634:HIS:N	2.14	0.63
2:A:470:PHE:CD1	2:A:552:VAL:HA	2.34	0.63
2:A:54:ILE:HB	2:A:138:VAL:HB	1.81	0.62
2:A:83:LYS:HA	2:A:88:GLY:H	1.64	0.62
2:A:452:ALA:HB3	2:A:491:PHE:CE1	2.34	0.62
2:A:67:PRO:HG2	2:A:70:VAL:HG13	1.82	0.62
2:A:143:LEU:HD13	2:A:158:THR:CG2	2.29	0.62
2:A:475:ARG:HG2	2:A:485:ILE:CD1	2.29	0.62
2:A:192:LEU:O	2:A:360:GLN:HG2	2.00	0.61

Continued on next page...

Continued from previous page...

Atom-1	Atom-2	Interatomic distance (Å)	Clash overlap (Å)
2:A:313:LYS:O	2:A:317:LYS:HE2	2.00	0.61
2:A:549:MET:O	2:A:552:VAL:HG22	2.00	0.61
2:A:61:ILE:H	2:A:98:LYS:HZ3	1.48	0.60
2:A:526:THR:CG2	2:A:528:VAL:HG12	2.32	0.60
2:A:55:TYR:CE2	2:A:105:PRO:HD3	2.36	0.59
2:A:452:ALA:HB3	2:A:491:PHE:CE2	2.37	0.59
2:A:154:VAL:HG11	2:A:159:ILE:HD11	1.83	0.59
2:A:112:LYS:CD	2:A:131:SER:HB2	2.24	0.59
2:A:475:ARG:CA	2:A:485:ILE:HD11	2.33	0.58
2:A:756:ILE:HD11	2:A:795:ARG:HH21	1.68	0.58
2:A:298:GLN:NE2	2:A:304:VAL:HG21	2.19	0.58
2:A:238:LEU:HB2	2:A:240:PHE:CE2	2.39	0.58
2:A:458:PRO:HD2	2:A:461:GLN:OE1	2.04	0.58
2:A:343:VAL:O	2:A:343:VAL:HG12	2.04	0.58
2:A:815:TYR:O	2:A:818:VAL:HG23	2.04	0.57
2:A:83:LYS:HG3	2:A:88:GLY:O	2.03	0.57
2:A:81:HIS:O	2:A:84:THR:HG22	2.04	0.57
2:A:112:LYS:HG3	2:A:113:VAL:N	2.18	0.57
2:A:61:ILE:H	2:A:98:LYS:NZ	2.03	0.57
2:A:78:MET:HB2	2:A:117:VAL:HG21	1.87	0.56
2:A:517:LEU:HD22	2:A:567:ILE:HG23	1.87	0.56
1:R:10:A:N3	1:R:10:A:H2'	2.18	0.56
2:A:517:LEU:HD12	2:A:518:VAL:H	1.70	0.56
2:A:502:GLU:HB3	2:A:503:PRO:HD3	1.87	0.56
2:A:634:HIS:CD2	2:A:635:ARG:HG3	2.40	0.56
2:A:494:TYR:O	2:A:495:ALA:HB2	2.05	0.56
2:A:58:GLU:HB2	2:A:135:VAL:HG21	1.87	0.56
2:A:372:ALA:HB3	2:A:373:PRO:HD3	1.88	0.56
2:A:485:ILE:O	2:A:485:ILE:HG13	2.05	0.56
2:A:540:LEU:HD13	2:A:542:MET:CE	2.33	0.55
2:A:426:ALA:CB	2:A:440:LYS:HG2	2.37	0.55
2:A:504:MET:O	2:A:508:LEU:HG	2.06	0.54
2:A:509:LYS:HB2	2:A:542:MET:HE2	1.88	0.54
2:A:269:ILE:HD11	2:A:339:LEU:CD1	2.31	0.54
2:A:112:LYS:HD2	2:A:131:SER:CB	2.27	0.54
2:A:50:PRO:HG3	2:A:397:PHE:O	2.07	0.54
2:A:634:HIS:NE2	2:A:635:ARG:HG3	2.23	0.54
2:A:119:LEU:HD12	2:A:119:LEU:O	2.07	0.54
2:A:441:GLN:HB2	2:A:482:GLY:CA	2.37	0.53
2:A:790:TYR:CE2	2:A:792:ARG:HB2	2.43	0.53
2:A:241:LYS:HE2	2:A:242:SER:OG	2.09	0.53

Continued on next page...

Continued from previous page...

Atom-1	Atom-2	Interatomic distance (Å)	Clash overlap (Å)
2:A:432:GLN:OE1	2:A:432:GLN:HA	2.08	0.53
2:A:266:LYS:HD2	2:A:266:LYS:N	2.23	0.53
2:A:501:VAL:HB	2:A:531:GLU:HG2	1.90	0.53
2:A:222:THR:HG23	2:A:224:PHE:CE1	2.43	0.53
2:A:475:ARG:HE	2:A:479:ARG:HH12	1.56	0.53
2:A:837:ARG:HG2	2:A:837:ARG:O	2.09	0.53
2:A:118:THR:HG22	2:A:127:ILE:HG12	1.91	0.53
2:A:84:THR:HG23	2:A:85:GLN:HG3	1.90	0.53
2:A:797:VAL:HG23	2:A:799:ILE:O	2.09	0.52
2:A:509:LYS:HB2	2:A:542:MET:HE1	1.92	0.52
2:A:476:LYS:HE3	2:A:480:ASP:OD2	2.10	0.52
2:A:539:VAL:HG12	2:A:540:LEU:N	2.23	0.52
2:A:507:HIS:O	2:A:511:THR:HG23	2.08	0.52
1:R:10:A:C8	2:A:353:ILE:HD13	2.45	0.52
1:R:1:UVP:C4	2:A:525:LYS:HA	2.39	0.52
2:A:790:TYR:OH	2:A:792:ARG:HD2	2.09	0.52
2:A:173:ARG:HG2	2:A:174:TYR:CZ	2.45	0.51
2:A:193:GLY:O	2:A:360:GLN:NE2	2.42	0.51
2:A:585:PRO:HD2	2:A:778:GLU:OE2	2.09	0.51
2:A:437:MET:HE1	2:A:565:LEU:CD2	2.36	0.51
2:A:134:TRP:HD1	2:A:135:VAL:N	2.08	0.51
2:A:167:ARG:HB2	2:A:181:PHE:HZ	1.75	0.51
2:A:509:LYS:HE2	2:A:542:MET:HG2	1.91	0.51
2:A:106:LEU:O	2:A:108:ILE:N	2.40	0.50
2:A:505:PHE:HA	2:A:508:LEU:CD1	2.29	0.50
2:A:629:VAL:HG13	2:A:846:VAL:CG1	2.41	0.50
2:A:555:THR:HG23	2:A:560:LEU:HD21	1.92	0.50
2:A:486:GLN:HA	2:A:486:GLN:OE1	2.12	0.50
2:A:90:ARG:CZ	2:A:104:MET:HG2	2.41	0.50
2:A:189:SER:C	2:A:191:PRO:HD3	2.31	0.50
2:A:419:LEU:HD23	2:A:577:ILE:HD11	1.94	0.50
2:A:491:PHE:HB3	2:A:512:TYR:OH	2.12	0.49
2:A:498:ALA:HA	2:A:501:VAL:HG23	1.93	0.49
1:R:7:A:H2'	1:R:8:G:O4'	2.13	0.49
2:A:448:ILE:HB	2:A:485:ILE:HA	1.95	0.48
2:A:451:TRP:O	2:A:452:ALA:CB	2.62	0.48
2:A:517:LEU:HD12	2:A:518:VAL:N	2.27	0.48
2:A:67:PRO:HG2	2:A:70:VAL:CG1	2.43	0.48
2:A:450:VAL:HG13	2:A:515:LEU:HA	1.94	0.48
2:A:219:VAL:HG12	2:A:382:LEU:HD11	1.95	0.48
2:A:470:PHE:HD1	2:A:552:VAL:HA	1.79	0.48

Continued on next page...

Continued from previous page...

Atom-1	Atom-2	Interatomic distance (Å)	Clash overlap (Å)
2:A:391:ASP:O	2:A:395:ARG:HG3	2.13	0.48
2:A:426:ALA:HB3	2:A:440:LYS:HG2	1.94	0.48
2:A:855:THR:HG22	2:A:856:MET:N	2.29	0.48
1:R:10:A:C8	2:A:353:ILE:HG21	2.49	0.47
2:A:491:PHE:HB3	2:A:512:TYR:CZ	2.49	0.47
2:A:633:GLN:HG2	2:A:634:HIS:H	1.78	0.47
2:A:619:ASP:OD1	2:A:622:PRO:HA	2.14	0.47
2:A:271:HIS:ND1	2:A:343:VAL:HG11	2.29	0.47
1:R:9:C:N4	2:A:710:ARG:HD2	2.28	0.47
1:R:1:UVP:N3	2:A:525:LYS:HA	2.30	0.47
2:A:62:LYS:NZ	2:A:63:PRO:HG3	2.29	0.47
2:A:231:ILE:O	2:A:234:VAL:HG22	2.15	0.47
2:A:362:SER:O	2:A:366:ARG:HG3	2.16	0.46
2:A:134:TRP:HD1	2:A:135:VAL:H	1.61	0.46
2:A:260:LYS:O	2:A:354:LYS:HE2	2.15	0.46
2:A:63:PRO:HD2	2:A:128:PHE:CE2	2.51	0.46
2:A:206:VAL:HG12	2:A:213:MET:CE	2.45	0.46
2:A:173:ARG:HG2	2:A:174:TYR:CE1	2.50	0.46
2:A:473:GLN:HB3	2:A:560:LEU:HD11	1.98	0.46
2:A:526:THR:HG22	2:A:528:VAL:HG12	1.97	0.46
1:R:10:A:H8	2:A:353:ILE:HD13	1.80	0.46
2:A:423:ARG:O	2:A:425:LYS:HE2	2.16	0.46
2:A:75:VAL:HG21	2:A:94:PHE:CE2	2.51	0.46
2:A:207:ARG:NH1	4:A:1001:HOH:O	2.49	0.45
2:A:475:ARG:HD2	2:A:485:ILE:HG13	1.97	0.45
2:A:436:ASP:OD2	2:A:438:ARG:NH1	2.49	0.45
2:A:737:ASP:HA	2:A:741:THR:HG21	1.98	0.45
2:A:58:GLU:HB2	2:A:135:VAL:CG2	2.46	0.45
2:A:488:GLN:HB3	2:A:489:PRO:HD2	1.98	0.45
2:A:90:ARG:O	2:A:92:PRO:HD3	2.16	0.45
2:A:267:VAL:O	2:A:278:LYS:HA	2.17	0.45
2:A:475:ARG:NE	2:A:479:ARG:HH12	2.15	0.45
2:A:555:THR:CG2	2:A:560:LEU:HD11	2.45	0.45
2:A:233:PHE:CG	2:A:346:ILE:HD11	2.52	0.45
2:A:848:VAL:HG12	2:A:849:HIS:N	2.32	0.45
2:A:113:VAL:O	2:A:131:SER:HA	2.17	0.45
2:A:437:MET:HE3	2:A:565:LEU:HD21	1.96	0.45
2:A:293:THR:HA	2:A:306:CYS:O	2.17	0.44
2:A:31:PHE:CD1	2:A:738:THR:HG22	2.52	0.44
2:A:475:ARG:HE	2:A:479:ARG:HH22	1.63	0.44
2:A:62:LYS:HD2	2:A:63:PRO:N	2.31	0.44

Continued on next page...

Continued from previous page...

Atom-1	Atom-2	Interatomic distance (Å)	Clash overlap (Å)
2:A:59:LEU:HD23	2:A:132:ILE:CD1	2.47	0.44
2:A:163:ASP:OD2	2:A:167:ARG:HD2	2.18	0.44
2:A:67:PRO:HD2	2:A:70:VAL:HG21	1.99	0.44
1:R:5:A:H2'	1:R:6:G:O4'	2.18	0.44
2:A:540:LEU:CB	2:A:542:MET:HE3	2.47	0.44
2:A:269:ILE:O	2:A:276:LYS:N	2.51	0.44
2:A:60:ASP:HB2	2:A:131:SER:OG	2.18	0.44
2:A:262:ILE:HA	2:A:265:LEU:HD22	2.00	0.44
2:A:475:ARG:HE	2:A:479:ARG:NH1	2.15	0.44
2:A:94:PHE:CE2	2:A:96:GLY:HA2	2.53	0.44
2:A:90:ARG:H	2:A:90:ARG:CD	2.30	0.43
2:A:343:VAL:O	2:A:343:VAL:CG1	2.66	0.43
2:A:556:THR:HG22	2:A:558:GLN:H	1.83	0.43
2:A:540:LEU:HB3	2:A:542:MET:CE	2.48	0.43
2:A:114:GLU:CD	2:A:131:SER:HB3	2.39	0.43
2:A:263:LYS:HD3	2:A:263:LYS:C	2.39	0.43
2:A:238:LEU:HD12	2:A:240:PHE:HE2	1.84	0.43
2:A:227:ALA:HB2	2:A:348:ALA:HB2	2.01	0.43
2:A:87:PHE:O	2:A:90:ARG:HD3	2.19	0.43
2:A:100:LEU:C	2:A:100:LEU:HD23	2.39	0.42
2:A:532:VAL:CG1	2:A:544:THR:HG21	2.46	0.42
2:A:304:VAL:HG12	2:A:305:GLU:N	2.34	0.42
2:A:475:ARG:O	2:A:479:ARG:HG2	2.19	0.42
2:A:531:GLU:CD	2:A:534:ARG:HH21	2.23	0.42
2:A:497:GLY:O	2:A:500:SER:HB3	2.19	0.42
2:A:59:LEU:HD23	2:A:132:ILE:HD13	2.02	0.42
2:A:607:LYS:HD3	2:A:634:HIS:CD2	2.55	0.42
2:A:59:LEU:HD11	2:A:100:LEU:HB2	2.02	0.42
2:A:235:CYS:HA	2:A:240:PHE:HD2	1.84	0.42
2:A:742:HIS:ND1	2:A:743:PRO:HD2	2.35	0.42
2:A:417:SER:HB3	2:A:427:ILE:CG2	2.50	0.42
2:A:49:ILE:HG22	2:A:140:LEU:HD13	2.02	0.42
2:A:531:GLU:OE2	2:A:534:ARG:NH2	2.53	0.42
2:A:533:LYS:O	2:A:537:ASP:HB2	2.19	0.42
2:A:691:CYS:HB3	2:A:698:TYR:CD2	2.55	0.42
2:A:86:ILE:O	2:A:107:PRO:HD2	2.20	0.42
2:A:198:VAL:HG21	2:A:364:MET:HG3	2.02	0.41
2:A:461:GLN:HB3	2:A:549:MET:SD	2.60	0.41
2:A:134:TRP:CD1	2:A:135:VAL:N	2.87	0.41
2:A:154:VAL:CG1	2:A:159:ILE:HD11	2.50	0.41
2:A:612:ALA:HB1	2:A:639:ILE:HG23	2.02	0.41

Continued on next page...

Continued from previous page...

Atom-1	Atom-2	Interatomic distance (Å)	Clash overlap (Å)
2:A:657:THR:O	2:A:658:ARG:HB2	2.20	0.41
2:A:454:ALA:O	2:A:520:VAL:HA	2.21	0.41
2:A:292:GLN:O	2:A:307:THR:HA	2.21	0.41
2:A:475:ARG:O	2:A:478:SER:HB3	2.20	0.41
2:A:505:PHE:HB3	2:A:540:LEU:HD13	1.98	0.41
2:A:241:LYS:HG3	2:A:242:SER:N	2.28	0.41
2:A:68:ARG:HD3	2:A:97:ARG:HE	1.85	0.41
2:A:49:ILE:CG2	2:A:140:LEU:HD13	2.50	0.41
2:A:238:LEU:HD23	2:A:257:LYS:HD3	2.03	0.41
2:A:59:LEU:CD2	2:A:132:ILE:CD1	2.99	0.41
2:A:563:LEU:HD12	2:A:563:LEU:HA	1.93	0.40
2:A:234:VAL:HG12	2:A:258:PHE:CD1	2.56	0.40
2:A:394:VAL:HG13	2:A:399:ILE:HB	2.02	0.40
2:A:790:TYR:CD2	2:A:797:VAL:HG11	2.56	0.40
2:A:248:LYS:HB3	2:A:324:HIS:CD2	2.56	0.40
2:A:450:VAL:HG13	2:A:450:VAL:O	2.21	0.40
2:A:540:LEU:HB3	2:A:542:MET:HE2	2.03	0.40
2:A:68:ARG:O	2:A:72:ARG:HG3	2.22	0.40
1:R:1:UVP:O4	2:A:525:LYS:HG3	2.22	0.40
2:A:522:LEU:HD22	2:A:528:VAL:CG1	2.51	0.40
2:A:67:PRO:HG2	2:A:70:VAL:HG22	2.03	0.40

There are no symmetry-related clashes.

5.3 Torsion angles ⓘ

5.3.1 Protein backbone ⓘ

In the following table, the Percentiles column shows the percent Ramachandran outliers of the chain as a percentile score with respect to all X-ray entries followed by that with respect to entries of similar resolution.

The Analysed column shows the number of residues for which the backbone conformation was analysed, and the total number of residues.

Mol	Chain	Analysed	Favoured	Allowed	Outliers	Percentiles
2	A	788/861 (92%)	759 (96%)	27 (3%)	2 (0%)	44 65

All (2) Ramachandran outliers are listed below:

Mol	Chain	Res	Type
2	A	495	ALA
2	A	523	PRO

5.3.2 Protein sidechains [i](#)

In the following table, the Percentiles column shows the percent sidechain outliers of the chain as a percentile score with respect to all X-ray entries followed by that with respect to entries of similar resolution.

The Analysed column shows the number of residues for which the sidechain conformation was analysed, and the total number of residues.

Mol	Chain	Analysed	Rotameric	Outliers	Percentiles	
2	A	714/752 (95%)	710 (99%)	4 (1%)	89	96

All (4) residues with a non-rotameric sidechain are listed below:

Mol	Chain	Res	Type
2	A	252	ASP
2	A	508	LEU
2	A	746	PHE
2	A	804	TYR

Some sidechains can be flipped to improve hydrogen bonding and reduce clashes. There are no such sidechains identified.

5.3.3 RNA [i](#)

Mol	Chain	Analysed	Backbone Outliers	Pucker Outliers
1	R	8/21 (38%)	0	0

There are no RNA backbone outliers to report.

There are no RNA pucker outliers to report.

5.4 Non-standard residues in protein, DNA, RNA chains [i](#)

There are no non-standard protein/DNA/RNA residues in this entry.

5.5 Carbohydrates [i](#)

There are no carbohydrates in this entry.

5.6 Ligand geometry [i](#)

2 ligands are modelled in this entry.

In the following table, the Counts columns list the number of bonds (or angles) for which Mogul statistics could be retrieved, the number of bonds (or angles) that are observed in the model and the number of bonds (or angles) that are defined in the chemical component dictionary. The Link column lists molecule types, if any, to which the group is linked. The Z score for a bond length (or angle) is the number of standard deviations the observed value is removed from the expected value. A bond length (or angle) with $|Z| > 2$ is considered an outlier worth inspection. RMSZ is the root-mean-square of all Z scores of the bond lengths (or angles).

Mol	Type	Chain	Res	Link	Bond lengths			Bond angles		
					Counts	RMSZ	$\# Z > 2$	Counts	RMSZ	$\# Z > 2$
3	IPH	A	901	-	7,7,7	0.40	0	8,8,8	0.21	0
3	IPH	A	902	-	7,7,7	0.40	0	8,8,8	0.29	0

In the following table, the Chirals column lists the number of chiral outliers, the number of chiral centers analysed, the number of these observed in the model and the number defined in the chemical component dictionary. Similar counts are reported in the Torsion and Rings columns. '-' means no outliers of that kind were identified.

Mol	Type	Chain	Res	Link	Chirals	Torsions	Rings
3	IPH	A	901	-	-	0/0/0/0	0/1/1/1
3	IPH	A	902	-	-	0/0/0/0	0/1/1/1

There are no bond length outliers.

There are no bond angle outliers.

There are no chirality outliers.

There are no torsion outliers.

There are no ring outliers.

No monomer is involved in short contacts.

5.7 Other polymers [i](#)

There are no such residues in this entry.

5.8 Polymer linkage issues ⓘ

There are no chain breaks in this entry.

6 Fit of model and data

6.1 Protein, DNA and RNA chains

In the following table, the column labelled ‘#RSRZ> 2’ contains the number (and percentage) of RSRZ outliers, followed by percent RSRZ outliers for the chain as percentile scores relative to all X-ray entries and entries of similar resolution. The OWAB column contains the minimum, median, 95th percentile and maximum values of the occupancy-weighted average B-factor per residue. The column labelled ‘Q< 0.9’ lists the number of (and percentage) of residues with an average occupancy less than 0.9.

Mol	Chain	Analysed	<RSRZ>	#RSRZ>2	OWAB(Å ²)	Q<0.9
1	R	10/21 (47%)	0.00	0 100 100	49, 62, 92, 131	0
2	A	802/861 (93%)	0.33	39 (4%) 30 32	29, 61, 117, 169	0
All	All	812/882 (92%)	0.32	39 (4%) 31 33	29, 62, 117, 169	0

All (39) RSRZ outliers are listed below:

Mol	Chain	Res	Type	RSRZ
2	A	491	PHE	7.1
2	A	460	ARG	6.3
2	A	465	VAL	6.1
2	A	461	GLN	5.6
2	A	334	GLN	5.5
2	A	189	SER	5.4
2	A	462	CYS	5.0
2	A	552	VAL	4.8
2	A	332	GLN	4.8
2	A	23	PHE	4.3
2	A	81	HIS	3.3
2	A	242	SER	3.1
2	A	453	ILE	3.1
2	A	854	ARG	2.9
2	A	672	SER	2.8
2	A	127	ILE	2.7
2	A	90	ARG	2.6
2	A	859	ALA	2.6
2	A	470	PHE	2.6
2	A	846	VAL	2.6
2	A	485	ILE	2.5
2	A	370	ARG	2.5
2	A	59	LEU	2.5
2	A	110	ARG	2.5

Continued on next page...

Continued from previous page...

Mol	Chain	Res	Type	RSRZ
2	A	673	GLU	2.4
2	A	243	ILE	2.4
2	A	335	LYS	2.4
2	A	299	GLU	2.3
2	A	82	PHE	2.3
2	A	850	GLN	2.3
2	A	468	LYS	2.2
2	A	451	TRP	2.2
2	A	506	ARG	2.1
2	A	85	GLN	2.1
2	A	553	GLN	2.1
2	A	133	LYS	2.1
2	A	336	HIS	2.1
2	A	134	TRP	2.1
2	A	820	LYS	2.1

6.2 Non-standard residues in protein, DNA, RNA chains [i](#)

There are no non-standard protein/DNA/RNA residues in this entry.

6.3 Carbohydrates [i](#)

There are no carbohydrates in this entry.

6.4 Ligands [i](#)

In the following table, the Atoms column lists the number of modelled atoms in the group and the number defined in the chemical component dictionary. LLDF column lists the quality of electron density of the group with respect to its neighbouring residues in protein, DNA or RNA chains. The B-factors column lists the minimum, median, 95th percentile and maximum values of B factors of atoms in the group. The column labelled 'Q< 0.9' lists the number of atoms with occupancy less than 0.9.

Mol	Type	Chain	Res	Atoms	RSCC	RSR	LLDF	B-factors(Å ²)	Q<0.9
3	IPH	A	901	7/7	0.93	0.34	10.21	70,76,91,91	0
3	IPH	A	902	7/7	0.93	0.21	2.95	57,66,77,81	0

6.5 Other polymers [i](#)

There are no such residues in this entry.