



Full wwPDB X-ray Structure Validation Report ⓘ

Feb 14, 2017 – 04:32 am GMT

PDB ID : 3TA3
Title : Structure of the mouse CD1d-Glc-DAG-s2-iNKT TCR complex
Authors : Girardi, E.; Yu, E.D.; Zajonc, D.M.
Deposited on : 2011-08-03
Resolution : 2.70 Å(reported)

This is a Full wwPDB X-ray Structure Validation Report for a publicly released PDB entry.

We welcome your comments at validation@mail.wwpdb.org

A user guide is available at

<http://wwpdb.org/validation/2016/XrayValidationReportHelp>

with specific help available everywhere you see the ⓘ symbol.

The following versions of software and data (see [references ⓘ](#)) were used in the production of this report:

MolProbity : 4.02b-467
Mogul : 1.7.2 (RC1), CSD as538be (2017)
Xtriage (Phenix) : 1.9-1692
EDS : trunk28620
Percentile statistics : 20161228.v01 (using entries in the PDB archive December 28th 2016)
Refmac : 5.8.0135
CCP4 : 6.5.0
Ideal geometry (proteins) : Engh & Huber (2001)
Ideal geometry (DNA, RNA) : Parkinson et al. (1996)
Validation Pipeline (wwPDB-VP) : recalc28949

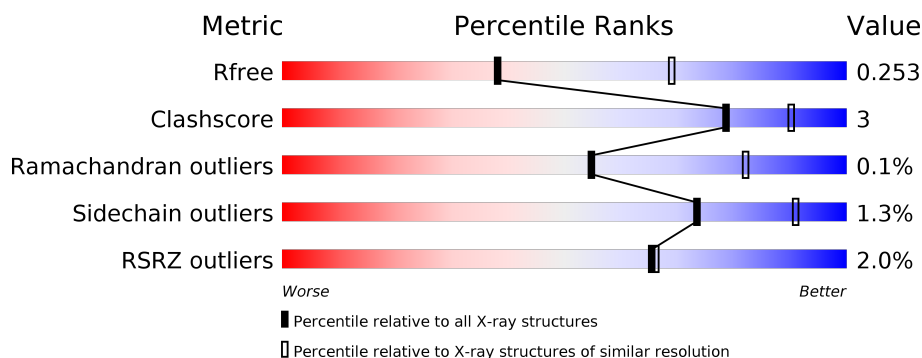
1 Overall quality at a glance

The following experimental techniques were used to determine the structure:

X-RAY DIFFRACTION

The reported resolution of this entry is 2.70 Å.

Percentile scores (ranging between 0-100) for global validation metrics of the entry are shown in the following graphic. The table shows the number of entries on which the scores are based.



Metric	Whole archive (#Entries)	Similar resolution (#Entries, resolution range(Å))
R_{free}	100719	2259 (2.70-2.70)
Clashscore	112137	2590 (2.70-2.70)
Ramachandran outliers	110173	2550 (2.70-2.70)
Sidechain outliers	110143	2550 (2.70-2.70)
RSRZ outliers	101464	2275 (2.70-2.70)

The table below summarises the geometric issues observed across the polymeric chains and their fit to the electron density. The red, orange, yellow and green segments on the lower bar indicate the fraction of residues that contain outliers for ≥ 3 , 2, 1 and 0 types of geometric quality criteria. A grey segment represents the fraction of residues that are not modelled. The numeric value for each fraction is indicated below the corresponding segment, with a dot representing fractions $\leq 5\%$. The upper red bar (where present) indicates the fraction of residues that have poor fit to the electron density. The numeric value is given above the bar.

Mol	Chain	Length	Quality of chain
1	A	285	<div> <div>3%</div> <div> <div></div> <div>82%</div> <div>12%</div> <div>6%</div> </div> </div>
2	B	99	<div> <div>90%</div> <div>7%</div> <div>•</div> </div>
3	C	209	<div> <div>3%</div> <div> <div></div> <div>88%</div> <div>9%</div> </div> <div>•</div> </div>
4	D	241	<div> <div>91%</div> <div>8%</div> <div>•</div> </div>

The following table lists non-polymeric compounds, carbohydrate monomers and non-standard residues in protein, DNA, RNA chains that are outliers for geometric or electron-density-fit crite-

ria:

Mol	Type	Chain	Res	Chirality	Geometry	Clashes	Electron density
7	FUC	A	513	-	-	-	X
8	3TF	A	286	-	-	-	X

2 Entry composition

There are 9 unique types of molecules in this entry. The entry contains 6553 atoms, of which 0 are hydrogens and 0 are deuteriums.

In the tables below, the ZeroOcc column contains the number of atoms modelled with zero occupancy, the AltConf column contains the number of residues with at least one atom in alternate conformation and the Trace column contains the number of residues modelled with at most 2 atoms.

- Molecule 1 is a protein called Antigen-presenting glycoprotein CD1d1.

Mol	Chain	Residues	Atoms					ZeroOcc	AltConf	Trace
1	A	267	Total	C	N	O	S	0	1	0
			2113	1348	359	392	14			

There are 7 discrepancies between the modelled and reference sequences:

Chain	Residue	Modelled	Actual	Comment	Reference
A	201	HIS	ASP	VARIANT	UNP P11609
A	280	HIS	-	EXPRESSION TAG	UNP P11609
A	281	HIS	-	EXPRESSION TAG	UNP P11609
A	282	HIS	-	EXPRESSION TAG	UNP P11609
A	283	HIS	-	EXPRESSION TAG	UNP P11609
A	284	HIS	-	EXPRESSION TAG	UNP P11609
A	285	HIS	-	EXPRESSION TAG	UNP P11609

- Molecule 2 is a protein called Beta-2-microglobulin.

Mol	Chain	Residues	Atoms					ZeroOcc	AltConf	Trace
2	B	96	Total	C	N	O	S	0	0	0
			765	489	130	140	6			

There is a discrepancy between the modelled and reference sequences:

Chain	Residue	Modelled	Actual	Comment	Reference
B	85	ALA	ASP	VARIANT	UNP P01887

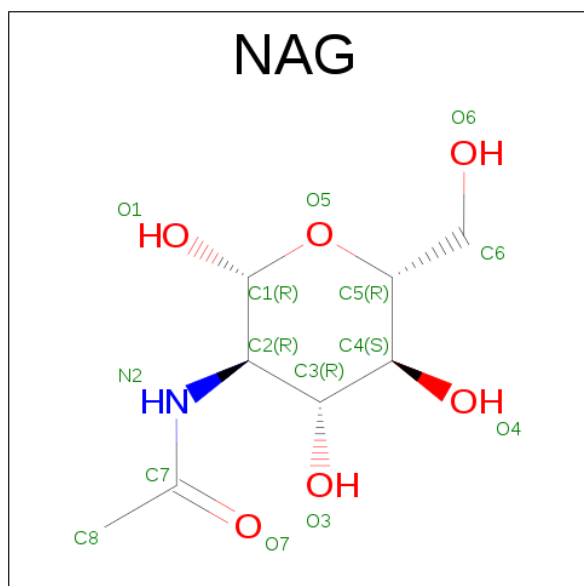
- Molecule 3 is a protein called Valpha14 chimera (mouse variable domain, human constant domain).

Mol	Chain	Residues	Atoms					ZeroOcc	AltConf	Trace
3	C	202	Total	C	N	O	S	0	0	0
			1532	949	261	314	8			

- Molecule 4 is a protein called Vbeta8.2 chimera (mouse variable domain, human constant domain).

Mol	Chain	Residues	Atoms					ZeroOcc	AltConf	Trace
4	D	239	Total	C	N	O	S	0	0	0
			1866	1172	330	359	5			

- Molecule 5 is Glc-DAG-s2 ligand (three-letter code: NAG) (formula: $C_8H_{15}NO_6$).



Mol	Chain	Residues	Atoms				ZeroOcc	AltConf
5	A	1	Total	C	N	O	0	0
			14	8	1	5		

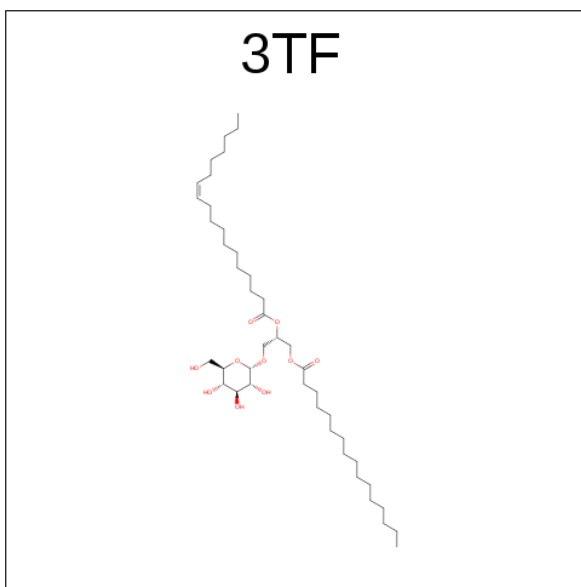
- Molecule 6 is a polymer of unknown type called SUGAR (2-MER).

Mol	Chain	Residues	Atoms				ZeroOcc	AltConf
6	A	2	Total	C	N	O	0	0
			28	16	2	10		

- Molecule 7 is a polymer of unknown type called SUGAR (3-MER).

Mol	Chain	Residues	Atoms				ZeroOcc	AltConf
7	A	3	Total	C	N	O	0	0
			38	22	2	14		

- Molecule 8 is (2S)-1-(ALPHA-D-GLUCOPYRANOSYLOXY)-3-(HEXADECANOYLOXY)PROPAN-2-YL (11Z)-OCTADEC-11-ENOATE (three-letter code: 3TF) (formula: $C_{43}H_{80}O_{10}$).



Mol	Chain	Residues	Atoms			ZeroOcc	AltConf
8	A	1	Total	C	O	0	0
			53	43	10		

- Molecule 9 is water.

Mol	Chain	Residues	Atoms		ZeroOcc	AltConf
9	A	35	Total	O	0	0
			35	35		
9	B	8	Total	O	0	0
			8	8		
9	C	33	Total	O	0	0
			33	33		
9	D	68	Total	O	0	0
			68	68		

4 Data and refinement statistics

Property	Value	Source
Space group	C 2 2 21	Depositor
Cell constants a, b, c, α , β , γ	78.15Å 190.72Å 150.88Å 90.00° 90.00° 90.00°	Depositor
Resolution (Å)	44.49 – 2.70 44.49 – 2.70	Depositor EDS
% Data completeness (in resolution range)	99.5 (44.49-2.70) 99.5 (44.49-2.70)	Depositor EDS
R_{merge}	0.14	Depositor
R_{sym}	(Not available)	Depositor
$\langle I/\sigma(I) \rangle$ ¹	2.24 (at 2.69Å)	Xtriage
Refinement program	REFMAC 5.5.0102	Depositor
R, R_{free}	0.205 , 0.256 0.202 , 0.253	Depositor DCC
R_{free} test set	1570 reflections (5.30%)	DCC
Wilson B-factor (Å ²)	40.1	Xtriage
Anisotropy	0.038	Xtriage
Bulk solvent k_{sol} (e/Å ³), B_{sol} (Å ²)	0.32 , 28.8	EDS
L-test for twinning ²	$\langle L \rangle = 0.49$, $\langle L^2 \rangle = 0.32$	Xtriage
Estimated twinning fraction	No twinning to report.	Xtriage
F_o, F_c correlation	0.92	EDS
Total number of atoms	6553	wwPDB-VP
Average B, all atoms (Å ²)	37.0	wwPDB-VP

Xtriage's analysis on translational NCS is as follows: *The largest off-origin peak in the Patterson function is 3.98% of the height of the origin peak. No significant pseudotranslation is detected.*

¹Intensities estimated from amplitudes.

²Theoretical values of $\langle |L| \rangle$, $\langle L^2 \rangle$ for acentric reflections are 0.5, 0.333 respectively for untwinned datasets, and 0.375, 0.2 for perfectly twinned datasets.

5 Model quality [i](#)

5.1 Standard geometry [i](#)

Bond lengths and bond angles in the following residue types are not validated in this section: 3TF, NAG, FUC

The Z score for a bond length (or angle) is the number of standard deviations the observed value is removed from the expected value. A bond length (or angle) with $|Z| > 5$ is considered an outlier worth inspection. RMSZ is the root-mean-square of all Z scores of the bond lengths (or angles).

Mol	Chain	Bond lengths		Bond angles	
		RMSZ	$\# Z > 5$	RMSZ	$\# Z > 5$
1	A	0.46	0/2172	0.55	0/2956
2	B	0.44	0/791	0.55	0/1082
3	C	0.46	0/1559	0.61	0/2123
4	D	0.48	0/1917	0.58	0/2616
All	All	0.46	0/6439	0.57	0/8777

There are no bond length outliers.

There are no bond angle outliers.

There are no chirality outliers.

There are no planarity outliers.

5.2 Too-close contacts [i](#)

In the following table, the Non-H and H(model) columns list the number of non-hydrogen atoms and hydrogen atoms in the chain respectively. The H(added) column lists the number of hydrogen atoms added and optimized by MolProbity. The Clashes column lists the number of clashes within the asymmetric unit, whereas Symm-Clashes lists symmetry related clashes.

Mol	Chain	Non-H	H(model)	H(added)	Clashes	Symm-Clashes
1	A	2113	0	1998	20	0
2	B	765	0	707	3	0
3	C	1532	0	1437	11	0
4	D	1866	0	1758	10	0
5	A	14	0	13	0	0
6	A	28	0	25	0	0
7	A	38	0	34	0	0
8	A	53	0	80	1	0
9	A	35	0	0	0	0

Continued on next page...

Continued from previous page...

Mol	Chain	Non-H	H(model)	H(added)	Clashes	Symm-Clashes
9	B	8	0	0	0	0
9	C	33	0	0	2	0
9	D	68	0	0	0	0
All	All	6553	0	6052	41	0

The all-atom clashscore is defined as the number of clashes found per 1000 atoms (including hydrogen atoms). The all-atom clashscore for this structure is 3.

All (41) close contacts within the same asymmetric unit are listed below, sorted by their clash magnitude.

Atom-1	Atom-2	Interatomic distance (Å)	Clash overlap (Å)
1:A:107:TYR:HB3	1:A:108:PRO:HD2	1.51	0.92
3:C:164:CYS:SG	4:D:168:CYS:CB	2.72	0.77
3:C:60:ARG:NH2	3:C:84:ASP:OD2	2.20	0.74
1:A:65:LYS:O	1:A:69[B]:MET:HG3	1.96	0.66
1:A:140:PRO:HD2	1:A:143:LEU:HD12	1.79	0.65
1:A:87:MET:HG2	1:A:88:MET:HE1	1.85	0.59
1:A:107:TYR:CB	1:A:108:PRO:HD2	2.31	0.54
1:A:107:TYR:HB3	1:A:108:PRO:CD	2.32	0.54
3:C:60:ARG:HH22	3:C:84:ASP:CG	2.12	0.52
4:D:21:LEU:HD22	4:D:106:THR:HG21	1.91	0.52
3:C:152:GLN:NE2	9:C:216:HOH:O	2.41	0.52
3:C:138:VAL:HG12	3:C:181:TRP:HB3	1.92	0.52
4:D:204:HIS:NE2	4:D:235:GLU:HG2	2.24	0.52
1:A:258:GLU:HA	1:A:261:LEU:HD12	1.92	0.51
1:A:35:LEU:HD12	1:A:183:LEU:HD23	1.93	0.49
3:C:130:ASP:HB3	3:C:133:SER:O	2.13	0.49
1:A:189:PRO:HB3	1:A:213:PHE:HB3	1.95	0.49
4:D:207:CYS:O	4:D:233:SER:HB2	2.14	0.48
1:A:145:LEU:HB3	1:A:146:PRO:HD3	1.97	0.46
1:A:262:ALA:HA	1:A:277:LEU:O	2.15	0.46
3:C:153:SER:HB2	3:C:160:ILE:HD11	1.97	0.46
4:D:125:PHE:HE1	4:D:143:LEU:HB2	1.81	0.46
1:A:145:LEU:O	1:A:149:VAL:HG23	2.17	0.45
3:C:19:VAL:O	3:C:20:LEU:HD23	2.16	0.45
1:A:148:LYS:HE2	4:D:96:GLU:OE1	2.17	0.45
1:A:13:LEU:HB3	2:B:56:PHE:CZ	2.52	0.44
4:D:170:ASP:HB2	4:D:187:LEU:HD12	2.00	0.44
1:A:104:CYS:HG	1:A:168:CYS:HG	0.57	0.43
3:C:46:LEU:HD22	3:C:61:TYR:CE1	2.52	0.43
4:D:36:ARG:HB3	4:D:46:ILE:HD11	2.01	0.43

Continued on next page...

Continued from previous page...

Atom-1	Atom-2	Interatomic distance (Å)	Clash overlap (Å)
2:B:37:ILE:HG12	2:B:82:VAL:HG22	2.01	0.42
1:A:11:ARG:HB3	1:A:13:LEU:HD21	2.01	0.42
1:A:168:CYS:HB3	1:A:169:PRO:CD	2.50	0.41
1:A:85:VAL:HG22	8:A:286:3TF:H25A	2.02	0.41
1:A:10:PHE:O	1:A:103:GLY:HA3	2.20	0.41
1:A:182:ASP:O	1:A:185:LYS:HG2	2.21	0.41
4:D:117:VAL:HG12	4:D:227:PRO:HB2	2.03	0.41
2:B:14:PRO:HA	2:B:15:PRO:HD3	1.99	0.41
3:C:183:ASN:HB2	9:C:237:HOH:O	2.21	0.41
4:D:46:ILE:HG22	4:D:47:HIS:CD2	2.56	0.40
3:C:163:LYS:HA	3:C:177:SER:O	2.21	0.40

There are no symmetry-related clashes.

5.3 Torsion angles [i](#)

5.3.1 Protein backbone [i](#)

In the following table, the Percentiles column shows the percent Ramachandran outliers of the chain as a percentile score with respect to all X-ray entries followed by that with respect to entries of similar resolution.

The Analysed column shows the number of residues for which the backbone conformation was analysed, and the total number of residues.

Mol	Chain	Analysed	Favoured	Allowed	Outliers	Percentiles	
1	A	264/285 (93%)	254 (96%)	10 (4%)	0	100	100
2	B	94/99 (95%)	91 (97%)	3 (3%)	0	100	100
3	C	198/209 (95%)	186 (94%)	11 (6%)	1 (0%)	32	60
4	D	237/241 (98%)	232 (98%)	5 (2%)	0	100	100
All	All	793/834 (95%)	763 (96%)	29 (4%)	1 (0%)	55	82

All (1) Ramachandran outliers are listed below:

Mol	Chain	Res	Type
3	C	134	SER

5.3.2 Protein sidechains ⓘ

In the following table, the Percentiles column shows the percent sidechain outliers of the chain as a percentile score with respect to all X-ray entries followed by that with respect to entries of similar resolution.

The Analysed column shows the number of residues for which the sidechain conformation was analysed, and the total number of residues.

Mol	Chain	Analysed	Rotameric	Outliers	Percentiles	
1	A	225/249 (90%)	221 (98%)	4 (2%)	64	87
2	B	83/93 (89%)	81 (98%)	2 (2%)	54	83
3	C	172/188 (92%)	172 (100%)	0	100	100
4	D	200/208 (96%)	197 (98%)	3 (2%)	70	90
All	All	680/738 (92%)	671 (99%)	9 (1%)	73	91

All (9) residues with a non-rotameric sidechain are listed below:

Mol	Chain	Res	Type
1	A	15	MET
1	A	24	SER
1	A	43	ASP
1	A	89	SER
2	B	57	SER
2	B	70	PHE
4	D	54	SER
4	D	75	SER
4	D	215	SER

Some sidechains can be flipped to improve hydrogen bonding and reduce clashes. There are no such sidechains identified.

5.3.3 RNA ⓘ

There are no RNA molecules in this entry.

5.4 Non-standard residues in protein, DNA, RNA chains ⓘ

There are no non-standard protein/DNA/RNA residues in this entry.

5.5 Carbohydrates

5 carbohydrates are modelled in this entry.

In the following table, the Counts columns list the number of bonds (or angles) for which Mogul statistics could be retrieved, the number of bonds (or angles) that are observed in the model and the number of bonds (or angles) that are defined in the chemical component dictionary. The Link column lists molecule types, if any, to which the group is linked. The Z score for a bond length (or angle) is the number of standard deviations the observed value is removed from the expected value. A bond length (or angle) with $|Z| > 2$ is considered an outlier worth inspection. RMSZ is the root-mean-square of all Z scores of the bond lengths (or angles).

Mol	Type	Chain	Res	Link	Bond lengths			Bond angles		
					Counts	RMSZ	# Z > 2	Counts	RMSZ	# Z > 2
6	NAG	A	501	1,6	14,14,15	0.57	0	15,19,21	1.47	1 (6%)
6	NAG	A	502	6	14,14,15	0.56	0	15,19,21	1.07	1 (6%)
7	NAG	A	511	1,7	14,14,15	0.56	0	15,19,21	1.02	1 (6%)
7	NAG	A	512	7	14,14,15	0.53	0	15,19,21	1.27	3 (20%)
7	FUC	A	513	7	9,10,11	0.70	0	13,14,16	1.26	2 (15%)

In the following table, the Chirals column lists the number of chiral outliers, the number of chiral centers analysed, the number of these observed in the model and the number defined in the chemical component dictionary. Similar counts are reported in the Torsion and Rings columns. '-' means no outliers of that kind were identified.

Mol	Type	Chain	Res	Link	Chirals	Torsions	Rings
6	NAG	A	501	1,6	-	0/6/23/26	0/1/1/1
6	NAG	A	502	6	-	0/6/23/26	0/1/1/1
7	NAG	A	511	1,7	-	0/6/23/26	0/1/1/1
7	NAG	A	512	7	-	0/6/23/26	0/1/1/1
7	FUC	A	513	7	-	0/0/17/20	0/1/1/1

There are no bond length outliers.

All (8) bond angle outliers are listed below:

Mol	Chain	Res	Type	Atoms	Z	Observed(°)	Ideal(°)
7	A	511	NAG	O5-C1-C2	-2.59	107.86	111.47
7	A	512	NAG	C2-N2-C7	2.13	126.05	122.94
7	A	512	NAG	C1-O5-C5	2.14	115.11	112.17
7	A	513	FUC	C1-O5-C5	2.15	117.15	112.39
7	A	513	FUC	O3-C3-C2	2.21	114.05	110.02
7	A	512	NAG	C4-C3-C2	2.28	114.36	111.02
6	A	502	NAG	C1-O5-C5	2.53	115.65	112.17
6	A	501	NAG	C1-O5-C5	4.70	118.65	112.17

There are no chirality outliers.

There are no torsion outliers.

There are no ring outliers.

No monomer is involved in short contacts.

5.6 Ligand geometry

2 ligands are modelled in this entry.

In the following table, the Counts columns list the number of bonds (or angles) for which Mogul statistics could be retrieved, the number of bonds (or angles) that are observed in the model and the number of bonds (or angles) that are defined in the chemical component dictionary. The Link column lists molecule types, if any, to which the group is linked. The Z score for a bond length (or angle) is the number of standard deviations the observed value is removed from the expected value. A bond length (or angle) with $|Z| > 2$ is considered an outlier worth inspection. RMSZ is the root-mean-square of all Z scores of the bond lengths (or angles).

Mol	Type	Chain	Res	Link	Bond lengths			Bond angles		
					Counts	RMSZ	$\# Z > 2$	Counts	RMSZ	$\# Z > 2$
8	3TF	A	286	-	53,53,53	0.85	0	61,61,61	1.41	8 (13%)
5	NAG	A	500	1	14,14,15	0.45	0	15,19,21	1.00	1 (6%)

In the following table, the Chirals column lists the number of chiral outliers, the number of chiral centers analysed, the number of these observed in the model and the number defined in the chemical component dictionary. Similar counts are reported in the Torsion and Rings columns. '-' means no outliers of that kind were identified.

Mol	Type	Chain	Res	Link	Chirals	Torsions	Rings
8	3TF	A	286	-	-	0/48/68/68	0/1/1/1
5	NAG	A	500	1	-	0/6/23/26	0/1/1/1

There are no bond length outliers.

All (9) bond angle outliers are listed below:

Mol	Chain	Res	Type	Atoms	Z	Observed(°)	Ideal(°)
8	A	286	3TF	C9-C8-C7	-5.57	99.29	111.86
8	A	286	3TF	C7-O1-C1	-3.14	107.32	113.76
8	A	286	3TF	C9-O7-C10	-2.62	109.25	117.13
8	A	286	3TF	O5-C5-C4	2.20	113.72	109.66
8	A	286	3TF	O8-C8-C7	2.33	116.90	108.44
8	A	286	3TF	C4-C3-C2	2.34	114.96	110.84
5	A	500	NAG	C1-O5-C5	2.40	115.48	112.17

Continued on next page...

Continued from previous page...

Mol	Chain	Res	Type	Atoms	Z	Observed(°)	Ideal(°)
8	A	286	3TF	C3-C4-C5	2.73	115.02	110.22
8	A	286	3TF	O8-C26-C27	3.89	119.63	111.55

There are no chirality outliers.

There are no torsion outliers.

There are no ring outliers.

1 monomer is involved in 1 short contact:

Mol	Chain	Res	Type	Clashes	Symm-Clashes
8	A	286	3TF	1	0

5.7 Other polymers [i](#)

There are no such residues in this entry.

5.8 Polymer linkage issues [i](#)

There are no chain breaks in this entry.

6 Fit of model and data [i](#)

6.1 Protein, DNA and RNA chains [i](#)

In the following table, the column labelled ‘#RSRZ> 2’ contains the number (and percentage) of RSRZ outliers, followed by percent RSRZ outliers for the chain as percentile scores relative to all X-ray entries and entries of similar resolution. The OWAB column contains the minimum, median, 95th percentile and maximum values of the occupancy-weighted average B-factor per residue. The column labelled ‘Q< 0.9’ lists the number of (and percentage) of residues with an average occupancy less than 0.9.

Mol	Chain	Analysed	<RSRZ>	#RSRZ>2	OWAB(Å ²)	Q<0.9
1	A	267/285 (93%)	-0.07	9 (3%) 46 45	19, 34, 82, 109	0
2	B	96/99 (96%)	-0.21	0 100 100	28, 42, 59, 63	0
3	C	202/209 (96%)	-0.16	6 (2%) 51 50	18, 34, 69, 81	0
4	D	239/241 (99%)	-0.34	1 (0%) 92 93	18, 29, 48, 65	0
All	All	804/834 (96%)	-0.19	16 (1%) 65 66	18, 33, 67, 109	0

All (16) RSRZ outliers are listed below:

Mol	Chain	Res	Type	RSRZ
1	A	197	PRO	3.5
1	A	196	VAL	3.1
4	D	181	ASN	3.0
3	C	154	LYS	3.0
3	C	186	ASP	3.0
1	A	256	GLY	2.8
3	C	135	ASP	2.8
1	A	254	GLU	2.7
1	A	253	VAL	2.7
1	A	255	ALA	2.7
1	A	258	GLU	2.4
3	C	134	SER	2.4
1	A	257	GLU	2.2
1	A	225	GLY	2.1
3	C	119	GLN	2.0
3	C	187	PHE	2.0

6.2 Non-standard residues in protein, DNA, RNA chains [i](#)

There are no non-standard protein/DNA/RNA residues in this entry.

6.3 Carbohydrates [i](#)

In the following table, the Atoms column lists the number of modelled atoms in the group and the number defined in the chemical component dictionary. LLDF column lists the quality of electron density of the group with respect to its neighbouring residues in protein, DNA or RNA chains. The B-factors column lists the minimum, median, 95th percentile and maximum values of B factors of atoms in the group. The column labelled 'Q < 0.9' lists the number of atoms with occupancy less than 0.9.

Mol	Type	Chain	Res	Atoms	RSCC	RSR	LLDF	B-factors(Å ²)	Q<0.9
7	FUC	A	513	10/11	0.91	0.20	2.20	50,52,56,58	0
7	NAG	A	511	14/15	0.93	0.17	1.50	48,52,57,57	0
6	NAG	A	501	14/15	0.95	0.16	0.08	42,49,51,56	0
6	NAG	A	502	14/15	0.83	0.37	-	61,65,72,74	0
7	NAG	A	512	14/15	0.88	0.24	-	57,62,68,69	0

6.4 Ligands [i](#)

In the following table, the Atoms column lists the number of modelled atoms in the group and the number defined in the chemical component dictionary. LLDF column lists the quality of electron density of the group with respect to its neighbouring residues in protein, DNA or RNA chains. The B-factors column lists the minimum, median, 95th percentile and maximum values of B factors of atoms in the group. The column labelled 'Q < 0.9' lists the number of atoms with occupancy less than 0.9.

Mol	Type	Chain	Res	Atoms	RSCC	RSR	LLDF	B-factors(Å ²)	Q<0.9
8	3TF	A	286	53/53	0.90	0.20	2.32	28,47,57,58	0
5	NAG	A	500	14/15	0.93	0.17	-	50,56,61,61	0

6.5 Other polymers [i](#)

There are no such residues in this entry.