



Full wwPDB X-ray Structure Validation Report ⓘ

Jan 10, 2018 – 01:06 PM EST

PDB ID : 5TEH
Title : c-Src V281C kinase domain in complex with Rao-IV-156
Authors : Dieter, E.M.; Merritt, E.A.; Maly, D.J.
Deposited on : 2016-09-21
Resolution : 2.99 Å(reported)

This is a Full wwPDB X-ray Structure Validation Report for a publicly released PDB entry.

We welcome your comments at validation@mail.wwpdb.org

A user guide is available at

<http://wwpdb.org/validation/2016/XrayValidationReportHelp>

with specific help available everywhere you see the ⓘ symbol.

The following versions of software and data (see [references ⓘ](#)) were used in the production of this report:

MolProbity : 4.02b-467
Mogul : 1.7.2 (RC1), CSD as538be (2017)
Xtriage (Phenix) : 1.9-1692
EDS : rb-20030736
Percentile statistics : 20161228.v01 (using entries in the PDB archive December 28th 2016)
Refmac : 5.8.0135
CCP4 : 6.5.0
Ideal geometry (proteins) : Engh & Huber (2001)
Ideal geometry (DNA, RNA) : Parkinson et al. (1996)
Validation Pipeline (wwPDB-VP) : rb-20030736

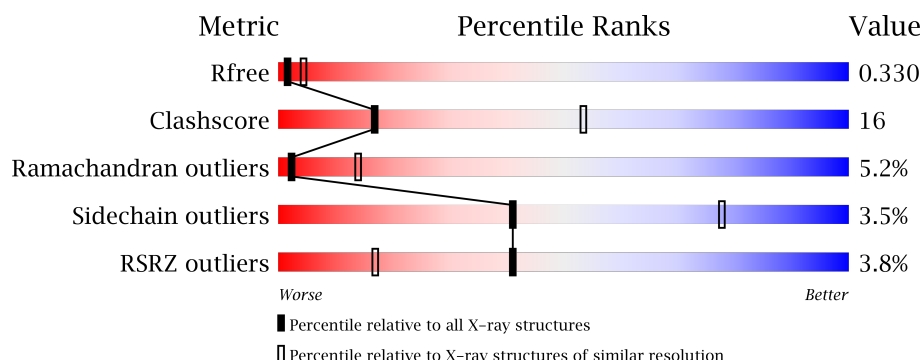
1 Overall quality at a glance

The following experimental techniques were used to determine the structure:

X-RAY DIFFRACTION

The reported resolution of this entry is 2.99 Å.

Percentile scores (ranging between 0-100) for global validation metrics of the entry are shown in the following graphic. The table shows the number of entries on which the scores are based.



Metric	Whole archive (#Entries)	Similar resolution (#Entries, resolution range(Å))
R_{free}	100719	1692 (3.00-3.00)
Clashscore	112137	2037 (3.00-3.00)
Ramachandran outliers	110173	1973 (3.00-3.00)
Sidechain outliers	110143	1976 (3.00-3.00)
RSRZ outliers	101464	1716 (3.00-3.00)

The table below summarises the geometric issues observed across the polymeric chains and their fit to the electron density. The red, orange, yellow and green segments on the lower bar indicate the fraction of residues that contain outliers for ≥ 3 , 2, 1 and 0 types of geometric quality criteria. A grey segment represents the fraction of residues that are not modelled. The numeric value for each fraction is indicated below the corresponding segment, with a dot representing fractions $\leq 5\%$. The upper red bar (where present) indicates the fraction of residues that have poor fit to the electron density. The numeric value is given above the bar.

Mol	Chain	Length	Quality of chain
1	A	286	<div> <div>3%</div> <div>56%</div> <div>31%</div> <div>•</div> <div>9%</div> </div>
1	B	286	<div> <div>3%</div> <div>58%</div> <div>28%</div> <div>5%</div> <div>8%</div> </div>

2 Entry composition

There are 3 unique types of molecules in this entry. The entry contains 4292 atoms, of which 0 are hydrogens and 0 are deuteriums.

In the tables below, the ZeroOcc column contains the number of atoms modelled with zero occupancy, the AltConf column contains the number of residues with at least one atom in alternate conformation and the Trace column contains the number of residues modelled with at most 2 atoms.

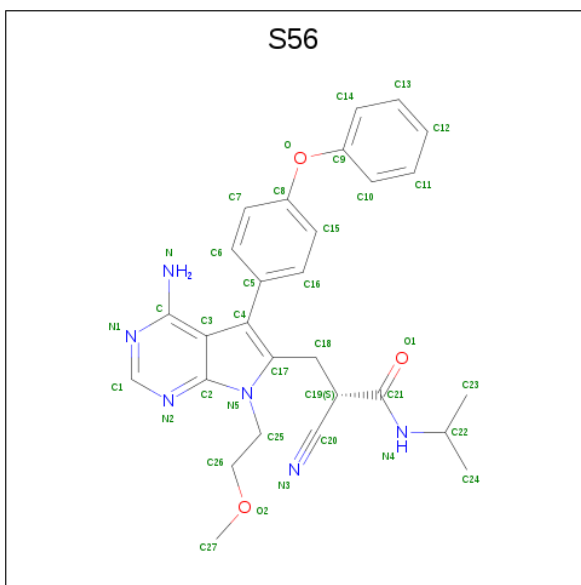
- Molecule 1 is a protein called Proto-oncogene tyrosine-protein kinase Src.

Mol	Chain	Residues	Atoms					ZeroOcc	AltConf	Trace
1	A	261	Total	C	N	O	S	0	0	0
			2099	1346	350	385	18			
1	B	262	Total	C	N	O	S	0	0	0
			2101	1346	351	386	18			

There are 8 discrepancies between the modelled and reference sequences:

Chain	Residue	Modelled	Actual	Comment	Reference
A	248	GLY	-	expression tag	UNP P00523
A	249	HIS	-	expression tag	UNP P00523
A	250	MET	-	expression tag	UNP P00523
A	281	CYS	VAL	engineered mutation	UNP P00523
B	248	GLY	-	expression tag	UNP P00523
B	249	HIS	-	expression tag	UNP P00523
B	250	MET	-	expression tag	UNP P00523
B	281	CYS	VAL	engineered mutation	UNP P00523

- Molecule 2 is (2S)-3-[4-amino-7-(2-methoxyethyl)-5-(4-phenoxyphenyl)-7H-pyrrolo[2,3-d]pyrimidin-6-yl]-2-cyano-N-(propan-2-yl)propanamide (three-letter code: S56) (formula: C₂₈H₃₀N₆O₃).



Mol	Chain	Residues	Atoms				ZeroOcc	AltConf
2	A	1	Total 37	C 28	N 6	O 3	0	0
2	B	1	Total 37	C 28	N 6	O 3	0	0

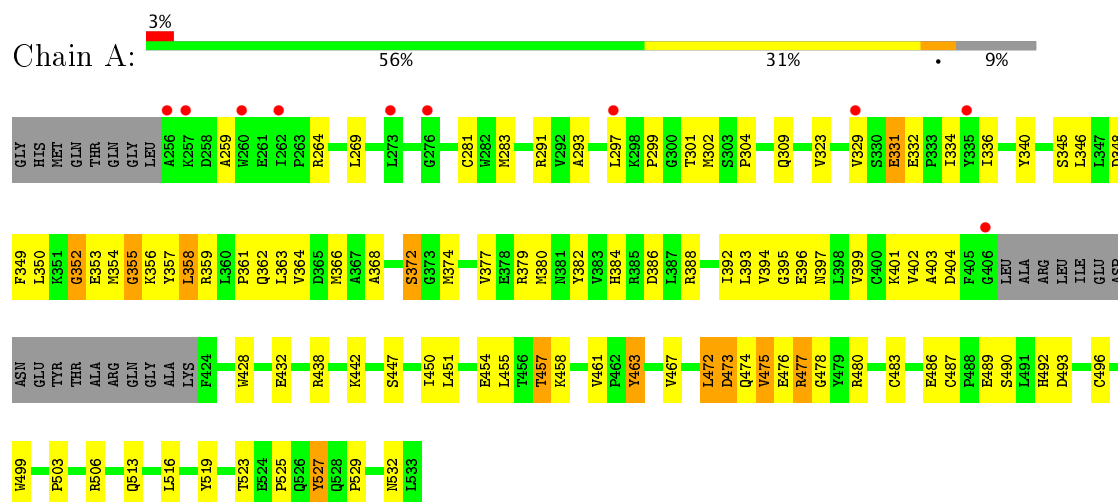
- Molecule 3 is water.

Mol	Chain	Residues	Atoms	ZeroOcc	AltConf
3	A	11	Total O 11 11	0	0
3	B	7	Total O 7 7	0	0

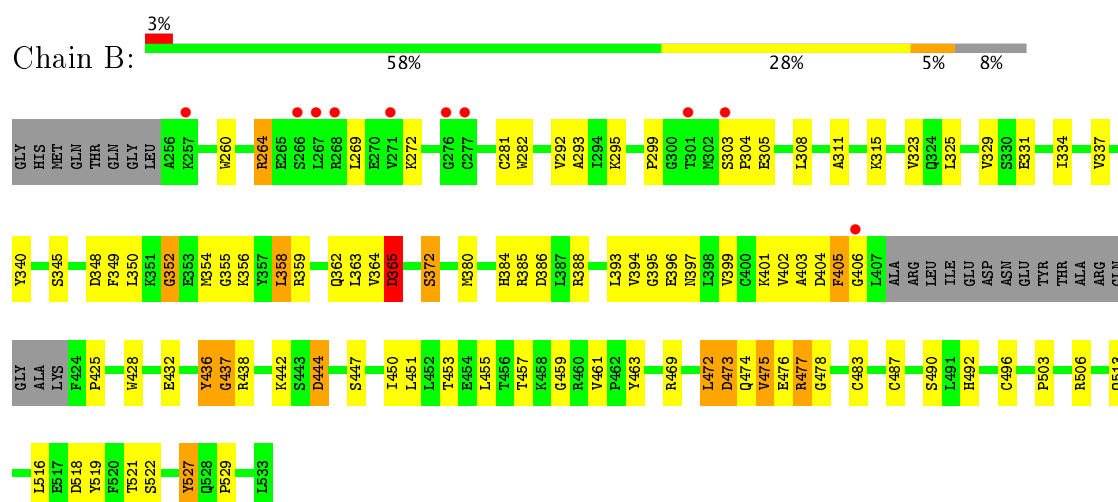
3 Residue-property plots

These plots are drawn for all protein, RNA and DNA chains in the entry. The first graphic for a chain summarises the proportions of the various outlier classes displayed in the second graphic. The second graphic shows the sequence view annotated by issues in geometry and electron density. Residues are color-coded according to the number of geometric quality criteria for which they contain at least one outlier: green = 0, yellow = 1, orange = 2 and red = 3 or more. A red dot above a residue indicates a poor fit to the electron density ($RSRZ > 2$). Stretches of 2 or more consecutive residues without any outlier are shown as a green connector. Residues present in the sample, but not in the model, are shown in grey.

- Molecule 1: Proto-oncogene tyrosine-protein kinase Src



- Molecule 1: Proto-oncogene tyrosine-protein kinase Src



4 Data and refinement statistics

Property	Value	Source
Space group	P 1	Depositor
Cell constants a, b, c, α , β , γ	41.79Å 63.59Å 76.07Å 76.73° 89.93° 89.79°	Depositor
Resolution (Å)	74.04 – 2.99 74.04 – 2.50	Depositor EDS
% Data completeness (in resolution range)	78.9 (74.04-2.99) 71.4 (74.04-2.50)	Depositor EDS
R_{merge}	0.17	Depositor
R_{sym}	(Not available)	Depositor
$\langle I/\sigma(I) \rangle$ ¹	1.57 (at 2.51Å)	Xtriage
Refinement program	REFMAC 5.8.0155	Depositor
R, R_{free}	0.304 , 0.366 0.282 , 0.330	Depositor DCC
R_{free} test set	662 reflections (5.72%)	DCC
Wilson B-factor (Å ²)	23.1	Xtriage
Anisotropy	0.841	Xtriage
Bulk solvent k_{sol} (e/Å ³), B_{sol} (Å ²)	0.34 , 61.3	EDS
L-test for twinning ²	$\langle L \rangle = 0.43$, $\langle L^2 \rangle = 0.26$	Xtriage
Estimated twinning fraction	0.287 for h,-k,-l	Xtriage
Reported twinning fraction	0.417 for H, K, L 0.583 for h,-k,-l	Depositor
Outliers	0 of 20656 reflections	Xtriage
F_o, F_c correlation	0.70	EDS
Total number of atoms	4292	wwPDB-VP
Average B, all atoms (Å ²)	77.0	wwPDB-VP

Xtriage's analysis on translational NCS is as follows: *The largest off-origin peak in the Patterson function is 13.90% of the height of the origin peak. No significant pseudotranslation is detected.*

¹Intensities estimated from amplitudes.

²Theoretical values of $\langle |L| \rangle$, $\langle L^2 \rangle$ for acentric reflections are 0.5, 0.333 respectively for untwinned datasets, and 0.375, 0.2 for perfectly twinned datasets.

5 Model quality

5.1 Standard geometry

Bond lengths and bond angles in the following residue types are not validated in this section: S56

The Z score for a bond length (or angle) is the number of standard deviations the observed value is removed from the expected value. A bond length (or angle) with $|Z| > 5$ is considered an outlier worth inspection. RMSZ is the root-mean-square of all Z scores of the bond lengths (or angles).

Mol	Chain	Bond lengths		Bond angles	
		RMSZ	$\# Z > 5$	RMSZ	$\# Z > 5$
1	A	0.92	1/2151 (0.0%)	1.03	4/2911 (0.1%)
1	B	0.91	0/2152	1.03	5/2913 (0.2%)
All	All	0.92	1/4303 (0.0%)	1.03	9/5824 (0.2%)

Chiral center outliers are detected by calculating the chiral volume of a chiral center and verifying if the center is modelled as a planar moiety or with the opposite hand. A planarity outlier is detected by checking planarity of atoms in a peptide group, atoms in a mainchain group or atoms of a sidechain that are expected to be planar.

Mol	Chain	#Chirality outliers	#Planarity outliers
1	A	0	1

All (1) bond length outliers are listed below:

Mol	Chain	Res	Type	Atoms	Z	Observed(Å)	Ideal(Å)
1	A	463	TYR	CZ-OH	5.24	1.46	1.37

All (9) bond angle outliers are listed below:

Mol	Chain	Res	Type	Atoms	Z	Observed(°)	Ideal(°)
1	B	469	ARG	NE-CZ-NH1	8.87	124.73	120.30
1	A	386	ASP	CB-CG-OD2	-8.40	110.74	118.30
1	B	444	ASP	CB-CG-OD1	6.70	124.33	118.30
1	B	469	ARG	NE-CZ-NH2	-6.05	117.28	120.30
1	A	379	ARG	NE-CZ-NH2	-5.45	117.58	120.30
1	A	457	THR	N-CA-C	-5.24	96.86	111.00
1	B	365	ASP	CB-CG-OD1	5.19	122.97	118.30
1	A	480	ARG	NE-CZ-NH2	-5.14	117.73	120.30
1	B	264	ARG	NE-CZ-NH1	5.03	122.81	120.30

There are no chirality outliers.

All (1) planarity outliers are listed below:

Mol	Chain	Res	Type	Group
1	A	467	VAL	Peptide

5.2 Too-close contacts ⓘ

In the following table, the Non-H and H(model) columns list the number of non-hydrogen atoms and hydrogen atoms in the chain respectively. The H(added) column lists the number of hydrogen atoms added and optimized by MolProbity. The Clashes column lists the number of clashes within the asymmetric unit, whereas Symm-Clashes lists symmetry related clashes.

Mol	Chain	Non-H	H(model)	H(added)	Clashes	Symm-Clashes
1	A	2099	0	2078	70	0
1	B	2101	0	2082	65	0
2	A	37	0	0	1	0
2	B	37	0	0	4	0
3	A	11	0	0	7	0
3	B	7	0	0	4	0
All	All	4292	0	4160	132	0

The all-atom clashscore is defined as the number of clashes found per 1000 atoms (including hydrogen atoms). The all-atom clashscore for this structure is 16.

All (132) close contacts within the same asymmetric unit are listed below, sorted by their clash magnitude.

Atom-1	Atom-2	Interatomic distance (Å)	Clash overlap (Å)
1:B:384:HIS:CD2	1:B:386:ASP:O	2.13	1.02
1:B:459:GLY:O	3:B:701:HOH:O	2.01	0.79
1:A:454:GLU:O	1:A:457:THR:O	2.00	0.79
1:A:374:MET:CE	1:A:384:HIS:CD2	2.67	0.76
1:A:461:VAL:HG22	1:B:521:THR:HG21	1.68	0.75
1:B:444:ASP:OD1	3:B:702:HOH:O	2.05	0.73
1:A:442:LYS:O	1:A:506:ARG:NH1	2.22	0.73
1:A:358:LEU:N	3:A:703:HOH:O	2.21	0.72
1:A:364:VAL:HG13	1:A:516:LEU:HD22	1.72	0.71
1:A:432:GLU:HB2	1:A:438:ARG:HE	1.55	0.69
1:A:357:TYR:HB2	3:A:703:HOH:O	1.93	0.68
1:B:364:VAL:HG13	1:B:516:LEU:HD22	1.75	0.68
1:B:354:MET:O	1:B:356:LYS:N	2.27	0.68
1:A:377:VAL:HG21	1:A:384:HIS:CE1	2.28	0.67

Continued on next page...

Continued from previous page...

Atom-1	Atom-2	Interatomic distance (Å)	Clash overlap (Å)
1:A:490:SER:OG	1:A:519:TYR:OH	2.13	0.67
1:B:436:TYR:O	1:B:438:ARG:N	2.28	0.67
1:A:374:MET:HE1	1:A:384:HIS:CD2	2.30	0.67
1:A:354:MET:O	1:A:356:LYS:N	2.29	0.66
1:A:259:ALA:HB2	3:A:711:HOH:O	1.97	0.65
1:B:490:SER:OG	1:B:519:TYR:OH	2.15	0.65
1:B:292:VAL:HG11	1:B:337:VAL:CG1	2.28	0.64
1:A:350:LEU:HD21	1:A:455:LEU:HD23	1.81	0.63
1:A:483:CYS:SG	1:A:487:CYS:O	2.57	0.63
1:A:396:GLU:O	1:A:399:VAL:HG23	1.99	0.62
1:B:384:HIS:NE2	1:B:386:ASP:O	2.31	0.62
1:B:483:CYS:SG	1:B:487:CYS:O	2.59	0.61
1:B:396:GLU:O	1:B:399:VAL:HG23	2.01	0.60
1:A:513:GLN:HG3	3:A:701:HOH:O	2.01	0.60
1:A:374:MET:SD	1:A:384:HIS:NE2	2.75	0.59
1:A:472:LEU:O	1:A:474:GLN:N	2.36	0.58
1:B:350:LEU:HD21	1:B:455:LEU:HD23	1.85	0.58
1:B:304:PRO:HA	1:B:334:ILE:HD11	1.86	0.58
1:A:368:ALA:O	3:A:701:HOH:O	2.17	0.57
1:A:357:TYR:C	3:A:703:HOH:O	2.43	0.57
1:A:472:LEU:O	1:A:473:ASP:C	2.42	0.56
1:B:358:LEU:O	1:B:359:ARG:NH1	2.39	0.56
1:A:358:LEU:O	1:A:359:ARG:NH1	2.39	0.55
1:A:473:ASP:O	1:A:477:ARG:HG3	2.06	0.55
1:B:281:CYS:SG	2:B:600:S56:O1	2.63	0.55
1:B:472:LEU:O	1:B:473:ASP:C	2.45	0.55
1:B:442:LYS:O	1:B:506:ARG:NH2	2.34	0.55
1:A:377:VAL:HG11	1:A:384:HIS:NE2	2.22	0.54
1:B:472:LEU:O	1:B:474:GLN:N	2.41	0.54
1:B:503:PRO:HA	1:B:506:ARG:CZ	2.37	0.54
1:A:503:PRO:HA	1:A:506:ARG:CZ	2.37	0.54
1:A:362:GLN:N	1:A:362:GLN:OE1	2.41	0.53
1:A:523:THR:OG1	3:A:702:HOH:O	2.18	0.53
1:B:362:GLN:N	1:B:362:GLN:OE1	2.41	0.53
1:A:374:MET:HE3	1:A:384:HIS:CD2	2.44	0.53
1:A:293:ALA:HB2	1:A:340:TYR:HA	1.91	0.52
1:A:476:GLU:O	1:A:478:GLY:N	2.43	0.52
1:B:476:GLU:O	1:B:478:GLY:N	2.43	0.52
1:A:301:THR:HG22	1:A:301:THR:O	2.10	0.51
1:B:293:ALA:HB2	1:B:340:TYR:HA	1.92	0.51
1:B:363:LEU:HD22	1:B:455:LEU:O	2.11	0.51

Continued on next page...

Continued from previous page...

Atom-1	Atom-2	Interatomic distance (Å)	Clash overlap (Å)
1:B:372:SER:HA	1:B:513:GLN:OE1	2.12	0.50
1:B:305:GLU:HB2	3:B:705:HOH:O	2.11	0.50
1:A:372:SER:HA	1:A:513:GLN:OE1	2.11	0.50
1:A:527:TYR:CE1	1:A:529:PRO:HA	2.47	0.50
1:B:311:ALA:HB1	1:B:315:LYS:CE	2.42	0.50
1:A:364:VAL:HG13	1:A:516:LEU:CD2	2.42	0.49
1:A:461:VAL:HG22	1:B:521:THR:CG2	2.41	0.49
1:A:297:LEU:HD11	1:A:336:ILE:HD11	1.94	0.49
1:B:474:GLN:O	1:B:475:VAL:C	2.51	0.49
1:A:394:VAL:HG12	1:A:395:GLY:N	2.28	0.48
1:B:264:ARG:NH2	1:B:331:GLU:O	2.46	0.48
1:A:450:ILE:HD13	1:A:499:TRP:CZ2	2.48	0.48
1:B:402:VAL:HG12	1:B:403:ALA:N	2.28	0.48
1:B:388:ARG:HB3	1:B:428:TRP:CD1	2.49	0.48
1:A:388:ARG:HB3	1:A:428:TRP:CD1	2.49	0.48
1:B:527:TYR:CE1	1:B:529:PRO:HA	2.49	0.47
1:A:393:LEU:N	1:A:401:LYS:O	2.47	0.47
1:A:474:GLN:O	1:A:475:VAL:C	2.51	0.47
1:A:492:HIS:NE2	1:A:496:CYS:SG	2.88	0.47
1:B:393:LEU:N	1:B:401:LYS:O	2.47	0.47
1:B:311:ALA:HB1	1:B:315:LYS:HE2	1.96	0.47
1:B:348:ASP:O	1:B:352:GLY:N	2.45	0.47
1:A:349:PHE:O	1:A:349:PHE:CD2	2.67	0.47
1:A:402:VAL:HG12	1:A:403:ALA:N	2.30	0.47
1:B:394:VAL:HG12	1:B:395:GLY:N	2.29	0.47
1:B:453:THR:O	1:B:457:THR:HG23	2.15	0.47
1:A:264:ARG:NH2	1:A:331:GLU:O	2.49	0.46
1:A:346:LEU:HD13	1:A:366:MET:HE2	1.98	0.46
1:A:372:SER:HA	1:A:513:GLN:CD	2.35	0.46
1:B:384:HIS:O	1:B:385:ARG:HB2	2.16	0.46
1:A:323:VAL:HG21	1:A:393:LEU:HD12	1.98	0.46
1:B:349:PHE:CD2	1:B:349:PHE:O	2.69	0.46
1:B:372:SER:HA	1:B:513:GLN:CD	2.37	0.46
1:B:354:MET:C	1:B:356:LYS:N	2.69	0.45
1:A:346:LEU:HD22	1:A:392:ILE:HG21	1.97	0.45
1:A:281:CYS:SG	2:A:600:S56:O1	2.75	0.45
1:A:474:GLN:O	1:A:477:ARG:N	2.50	0.45
1:B:461:VAL:N	3:B:701:HOH:O	2.50	0.44
1:A:361:PRO:HB2	1:A:362:GLN:OE1	2.18	0.44
1:A:348:ASP:O	1:A:352:GLY:N	2.49	0.44
1:B:365:ASP:C	1:B:365:ASP:OD1	2.56	0.44

Continued on next page...

Continued from previous page...

Atom-1	Atom-2	Interatomic distance (Å)	Clash overlap (Å)
1:A:363:LEU:HD22	1:A:455:LEU:O	2.17	0.44
1:B:272:LYS:HG2	1:B:282:TRP:CH2	2.53	0.44
1:A:447:SER:O	1:A:450:ILE:N	2.51	0.44
1:B:474:GLN:O	1:B:477:ARG:N	2.51	0.44
1:B:354:MET:C	1:B:356:LYS:H	2.20	0.44
1:A:461:VAL:HG23	1:B:518:ASP:HB3	1.99	0.44
1:A:397:ASN:O	1:A:397:ASN:CG	2.57	0.43
1:A:269:LEU:HD12	1:A:269:LEU:N	2.33	0.43
1:A:354:MET:C	1:A:356:LYS:N	2.72	0.43
1:B:323:VAL:CG2	1:B:403:ALA:HB2	2.48	0.43
1:A:304:PRO:HG3	1:A:332:GLU:HG3	1.99	0.43
1:A:355:GLY:O	1:A:458:LYS:NZ	2.40	0.43
1:B:260:TRP:CD1	1:B:315:LYS:CD	3.02	0.43
1:A:283:MET:SD	1:A:291:ARG:HD2	2.59	0.43
1:B:295:LYS:HB3	2:B:600:S56:C10	2.49	0.43
1:A:354:MET:C	1:A:356:LYS:H	2.22	0.43
1:B:436:TYR:O	1:B:437:GLY:C	2.56	0.43
1:A:329:VAL:O	1:A:334:ILE:HG23	2.19	0.42
1:A:377:VAL:HG13	1:A:382:TYR:HB2	2.01	0.42
1:B:447:SER:O	1:B:450:ILE:N	2.53	0.42
1:B:329:VAL:O	1:B:334:ILE:HG23	2.20	0.42
1:B:476:GLU:C	1:B:478:GLY:H	2.22	0.42
1:B:269:LEU:N	1:B:269:LEU:HD12	2.35	0.41
1:B:384:HIS:ND1	1:B:405:PHE:HA	2.35	0.41
1:B:384:HIS:CE1	1:B:405:PHE:HA	2.56	0.41
1:B:492:HIS:NE2	1:B:496:CYS:SG	2.93	0.41
1:A:353:GLU:HB3	1:A:354:MET:HE3	2.03	0.41
1:B:293:ALA:HB1	2:B:600:S56:N	2.36	0.41
1:B:397:ASN:O	1:B:397:ASN:CG	2.59	0.41
1:A:486:GLU:OE1	1:A:532:ASN:N	2.50	0.40
1:B:323:VAL:HG21	1:B:393:LEU:HD12	2.03	0.40
1:B:325:LEU:O	1:B:325:LEU:HG	2.22	0.40
1:A:489:GLU:O	1:A:493:ASP:OD1	2.40	0.40
1:B:432:GLU:OE2	1:B:506:ARG:NH2	2.42	0.40
1:A:476:GLU:C	1:A:478:GLY:H	2.24	0.40
1:B:295:LYS:NZ	2:B:600:S56:O1	2.47	0.40

There are no symmetry-related clashes.

5.3 Torsion angles

5.3.1 Protein backbone

In the following table, the Percentiles column shows the percent Ramachandran outliers of the chain as a percentile score with respect to all X-ray entries followed by that with respect to entries of similar resolution.

The Analysed column shows the number of residues for which the backbone conformation was analysed, and the total number of residues.

Mol	Chain	Analysed	Favoured	Allowed	Outliers	Percentiles	
1	A	257/286 (90%)	217 (84%)	28 (11%)	12 (5%)	3	16
1	B	258/286 (90%)	219 (85%)	24 (9%)	15 (6%)	2	11
All	All	515/572 (90%)	436 (85%)	52 (10%)	27 (5%)	2	14

All (27) Ramachandran outliers are listed below:

Mol	Chain	Res	Type
1	A	355	GLY
1	A	372	SER
1	A	463	TYR
1	A	473	ASP
1	B	355	GLY
1	B	372	SER
1	B	437	GLY
1	B	463	TYR
1	B	473	ASP
1	A	451	LEU
1	A	475	VAL
1	B	405	PHE
1	B	406	GLY
1	B	475	VAL
1	A	404	ASP
1	B	299	PRO
1	B	451	LEU
1	A	352	GLY
1	A	472	LEU
1	A	477	ARG
1	B	404	ASP
1	B	472	LEU
1	B	477	ARG
1	A	299	PRO
1	A	525	PRO

Continued on next page...

Continued from previous page...

Mol	Chain	Res	Type
1	B	425	PRO
1	B	352	GLY

5.3.2 Protein sidechains ⓘ

In the following table, the Percentiles column shows the percent sidechain outliers of the chain as a percentile score with respect to all X-ray entries followed by that with respect to entries of similar resolution.

The Analysed column shows the number of residues for which the sidechain conformation was analysed, and the total number of residues.

Mol	Chain	Analysed	Rotameric	Outliers	Percentiles	
1	A	226/245 (92%)	219 (97%)	7 (3%)	45	80
1	B	226/245 (92%)	217 (96%)	9 (4%)	36	74
All	All	452/490 (92%)	436 (96%)	16 (4%)	41	78

All (16) residues with a non-rotameric sidechain are listed below:

Mol	Chain	Res	Type
1	A	302	MET
1	A	309	GLN
1	A	331	GLU
1	A	345	SER
1	A	358	LEU
1	A	380	MET
1	A	527	TYR
1	B	303	SER
1	B	308	LEU
1	B	345	SER
1	B	358	LEU
1	B	365	ASP
1	B	380	MET
1	B	436	TYR
1	B	522	SER
1	B	527	TYR

Some sidechains can be flipped to improve hydrogen bonding and reduce clashes. All (5) such sidechains are listed below:

Mol	Chain	Res	Type
1	A	319	HIS
1	A	497	GLN
1	B	312	GLN
1	B	319	HIS
1	B	497	GLN

5.3.3 RNA [i](#)

There are no RNA molecules in this entry.

5.4 Non-standard residues in protein, DNA, RNA chains [i](#)

There are no non-standard protein/DNA/RNA residues in this entry.

5.5 Carbohydrates [i](#)

There are no carbohydrates in this entry.

5.6 Ligand geometry [i](#)

2 ligands are modelled in this entry.

In the following table, the Counts columns list the number of bonds (or angles) for which Mogul statistics could be retrieved, the number of bonds (or angles) that are observed in the model and the number of bonds (or angles) that are defined in the Chemical Component Dictionary. The Link column lists molecule types, if any, to which the group is linked. The Z score for a bond length (or angle) is the number of standard deviations the observed value is removed from the expected value. A bond length (or angle) with $|Z| > 2$ is considered an outlier worth inspection. RMSZ is the root-mean-square of all Z scores of the bond lengths (or angles).

Mol	Type	Chain	Res	Link	Bond lengths			Bond angles		
					Counts	RMSZ	# $ Z > 2$	Counts	RMSZ	# $ Z > 2$
2	S56	A	600	1	36,40,40	1.38	1 (2%)	39,55,55	0.98	3 (7%)
2	S56	B	600	1	36,40,40	0.86	1 (2%)	39,55,55	1.07	2 (5%)

In the following table, the Chirals column lists the number of chiral outliers, the number of chiral centers analysed, the number of these observed in the model and the number defined in the Chemical Component Dictionary. Similar counts are reported in the Torsion and Rings columns. '-' means no outliers of that kind were identified.

Mol	Type	Chain	Res	Link	Chirals	Torsions	Rings
2	S56	A	600	1	-	0/23/26/26	0/4/4/4
2	S56	B	600	1	-	1/23/26/26	0/4/4/4

All (2) bond length outliers are listed below:

Mol	Chain	Res	Type	Atoms	Z	Observed(Å)	Ideal(Å)
2	B	600	S56	C18-C17	3.97	1.56	1.50
2	A	600	S56	C18-C17	7.75	1.61	1.50

All (5) bond angle outliers are listed below:

Mol	Chain	Res	Type	Atoms	Z	Observed(°)	Ideal(°)
2	B	600	S56	C18-C17-C4	-4.89	122.15	130.41
2	B	600	S56	C20-C19-C21	-2.49	102.75	109.99
2	A	600	S56	C4-C3-C2	-2.05	105.90	107.54
2	A	600	S56	C18-C17-C4	-2.02	127.00	130.41
2	A	600	S56	C26-C25-N5	3.37	117.83	111.21

There are no chirality outliers.

All (1) torsion outliers are listed below:

Mol	Chain	Res	Type	Atoms
2	B	600	S56	C19-C21-N4-C22

There are no ring outliers.

2 monomers are involved in 5 short contacts:

Mol	Chain	Res	Type	Clashes	Symm-Clashes
2	A	600	S56	1	0
2	B	600	S56	4	0

5.7 Other polymers [i](#)

There are no such residues in this entry.

5.8 Polymer linkage issues [i](#)

There are no chain breaks in this entry.

6 Fit of model and data

6.1 Protein, DNA and RNA chains

In the following table, the column labelled ‘#RSRZ> 2’ contains the number (and percentage) of RSRZ outliers, followed by percent RSRZ outliers for the chain as percentile scores relative to all X-ray entries and entries of similar resolution. The OWAB column contains the minimum, median, 95th percentile and maximum values of the occupancy-weighted average B-factor per residue. The column labelled ‘Q< 0.9’ lists the number of (and percentage) of residues with an average occupancy less than 0.9.

Mol	Chain	Analysed	<RSRZ>	#RSRZ>2		OWAB(Å ²)	Q<0.9
1	A	261/286 (91%)	0.21	10 (3%)	41 17	48, 65, 125, 137	0
1	B	262/286 (91%)	0.27	10 (3%)	41 17	57, 73, 123, 128	0
All	All	523/572 (91%)	0.24	20 (3%)	41 17	48, 71, 125, 137	0

All (20) RSRZ outliers are listed below:

Mol	Chain	Res	Type	RSRZ
1	A	406	GLY	4.9
1	B	267	LEU	4.7
1	A	276	GLY	3.8
1	A	257	LYS	2.8
1	B	303	SER	2.7
1	A	335	TYR	2.7
1	B	257	LYS	2.7
1	B	277	CYS	2.6
1	B	271	VAL	2.5
1	A	297	LEU	2.4
1	A	329	VAL	2.2
1	A	260	TRP	2.2
1	A	273	LEU	2.2
1	B	406	GLY	2.2
1	B	266	SER	2.2
1	A	262	ILE	2.2
1	B	268	ARG	2.1
1	B	301	THR	2.1
1	A	256	ALA	2.1
1	B	276	GLY	2.0

6.2 Non-standard residues in protein, DNA, RNA chains [i](#)

There are no non-standard protein/DNA/RNA residues in this entry.

6.3 Carbohydrates [i](#)

There are no carbohydrates in this entry.

6.4 Ligands [i](#)

In the following table, the Atoms column lists the number of modelled atoms in the group and the number defined in the chemical component dictionary. LLDF column lists the quality of electron density of the group with respect to its neighbouring residues in protein, DNA or RNA chains. The B-factors column lists the minimum, median, 95th percentile and maximum values of B factors of atoms in the group. The column labelled 'Q< 0.9' lists the number of atoms with occupancy less than 0.9.

Mol	Type	Chain	Res	Atoms	RSCC	RSR	LLDF	B-factors(\AA^2)	Q<0.9
2	S56	A	600	37/37	0.88	0.27	0.45	51,51,51,51	0
2	S56	B	600	37/37	0.84	0.25	0.39	51,51,51,51	0

6.5 Other polymers [i](#)

There are no such residues in this entry.