



Full wwPDB X-ray Structure Validation Report ⓘ

Nov 14, 2017 – 05:14 AM EST

PDB ID : 5TN9
Title : Crystal Structure of the ER-alpha Ligand-binding Domain (L372S,L536S) in Complex with the OBHS-BSC, 4-bromophenyl (1R,2R,4S)-5-(4-hydroxyphenyl)-6-(4-(2-(piperidin-1-yl)ethoxy)phenyl)-7-oxabicyclo[2.2.1]hept-5-ene-2-sulfonate
Authors : Nwachukwu, J.C.; Sharma, N.; Carlson, K.E.; Srinivasan, S.; Sharma, A.; Katzenellenbogen, J.A.; Nettles, K.W.
Deposited on : unknown
Resolution : 2.25 Å(reported)

This is a Full wwPDB X-ray Structure Validation Report for a publicly released PDB entry.

We welcome your comments at validation@mail.wwpdb.org

A user guide is available at

<http://wwpdb.org/validation/2016/XrayValidationReportHelp>

with specific help available everywhere you see the ⓘ symbol.

The following versions of software and data (see [references ⓘ](#)) were used in the production of this report:

MolProbity	:	4.02b-467
Mogul	:	1.7.2 (RC1), CSD as538be (2017)
Xtriage (Phenix)	:	1.9-1692
EDS	:	rb-20030345
Percentile statistics	:	20161228.v01 (using entries in the PDB archive December 28th 2016)
Refmac	:	5.8.0135
CCP4	:	6.5.0
Ideal geometry (proteins)	:	Engh & Huber (2001)
Ideal geometry (DNA, RNA)	:	Parkinson et al. (1996)
Validation Pipeline (wwPDB-VP)	:	rb-20030345

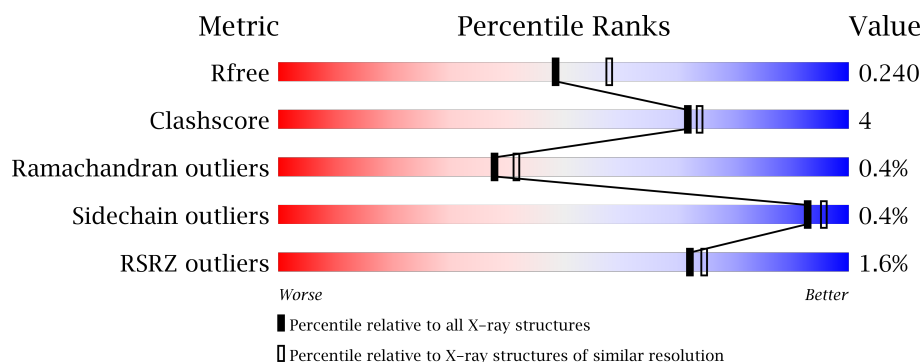
1 Overall quality at a glance

The following experimental techniques were used to determine the structure:

X-RAY DIFFRACTION

The reported resolution of this entry is 2.25 Å.

Percentile scores (ranging between 0-100) for global validation metrics of the entry are shown in the following graphic. The table shows the number of entries on which the scores are based.



Metric	Whole archive (#Entries)	Similar resolution (#Entries, resolution range(Å))
R_{free}	100719	1062 (2.26-2.26)
Clashscore	112137	1178 (2.26-2.26)
Ramachandran outliers	110173	1145 (2.26-2.26)
Sidechain outliers	110143	1146 (2.26-2.26)
RSRZ outliers	101464	1066 (2.26-2.26)

The table below summarises the geometric issues observed across the polymeric chains and their fit to the electron density. The red, orange, yellow and green segments on the lower bar indicate the fraction of residues that contain outliers for ≥ 3 , 2, 1 and 0 types of geometric quality criteria. A grey segment represents the fraction of residues that are not modelled. The numeric value for each fraction is indicated below the corresponding segment, with a dot representing fractions $\leq 5\%$. The upper red bar (where present) indicates the fraction of residues that have poor fit to the electron density. The numeric value is given above the bar.

Mol	Chain	Length	Quality of chain
1	A	257	<div> <div>2%</div> <div> <div></div> <div>80%</div> <div>6%</div> <div>14%</div> </div> </div>
1	B	257	<div> <div>2%</div> <div> <div></div> <div>74%</div> <div>8%</div> <div>18%</div> </div> </div>
1	C	257	<div> <div>%</div> <div> <div></div> <div>78%</div> <div>9%</div> <div>13%</div> </div> </div>
1	D	257	<div> <div></div> <div> <div></div> <div>76%</div> <div>9%</div> <div>15%</div> </div> </div>

2 Entry composition

There are 3 unique types of molecules in this entry. The entry contains 7235 atoms, of which 0 are hydrogens and 0 are deuteriums.

In the tables below, the ZeroOcc column contains the number of atoms modelled with zero occupancy, the AltConf column contains the number of residues with at least one atom in alternate conformation and the Trace column contains the number of residues modelled with at most 2 atoms.

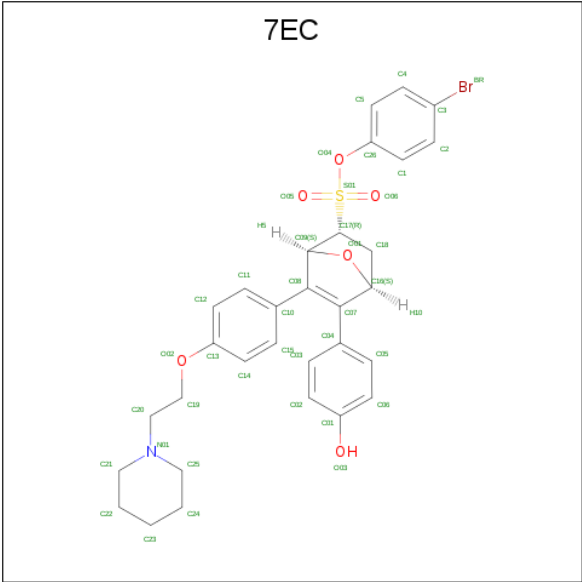
- Molecule 1 is a protein called Estrogen receptor.

Mol	Chain	Residues	Atoms					ZeroOcc	AltConf	Trace
1	A	222	Total	C	N	O	S	0	0	0
			1706	1097	293	301	15			
1	B	211	Total	C	N	O	S	0	2	0
			1645	1055	288	288	14			
1	C	224	Total	C	N	O	S	0	1	0
			1738	1121	296	307	14			
1	D	219	Total	C	N	O	S	0	0	0
			1697	1089	292	301	15			

There are 8 discrepancies between the modelled and reference sequences:

Chain	Residue	Modelled	Actual	Comment	Reference
A	372	SER	LEU	engineered mutation	UNP P03372
A	536	SER	LEU	engineered mutation	UNP P03372
B	372	SER	LEU	engineered mutation	UNP P03372
B	536	SER	LEU	engineered mutation	UNP P03372
C	372	SER	LEU	engineered mutation	UNP P03372
C	536	SER	LEU	engineered mutation	UNP P03372
D	372	SER	LEU	engineered mutation	UNP P03372
D	536	SER	LEU	engineered mutation	UNP P03372

- Molecule 2 is 4-bromophenyl (1S,2R,4S)-5-(4-hydroxyphenyl)-6-{4-[2-(piperidin-1-yl)ethoxy]phenyl}-7-oxabicyclo[2.2.1]hept-5-ene-2-sulfonate (three-letter code: 7EC) (formula: C₃₁H₃₂BrNO₆S).



Mol	Chain	Residues	Atoms					ZeroOcc	AltConf
2	A	1	Total	C	N	O	S	0	0
			33	25	1	6	1		
2	B	1	Total	C	N	O	S	0	1
			34	26	1	6	1		
2	C	1	Total	C	N	O	S	0	0
			34	26	1	6	1		
2	D	1	Total	C	N	O	S	0	1
			34	26	1	6	1		

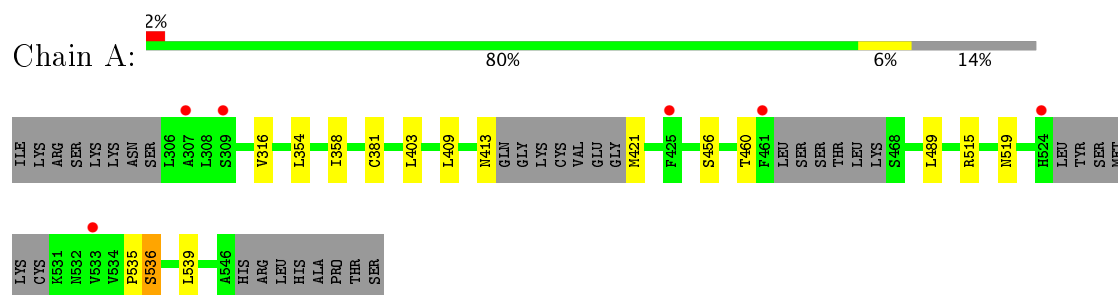
- Molecule 3 is water.

Mol	Chain	Residues	Atoms		ZeroOcc	AltConf
3	A	87	Total	O	0	0
			87	87		
3	B	77	Total	O	0	0
			77	77		
3	C	77	Total	O	0	0
			77	77		
3	D	73	Total	O	0	0
			73	73		

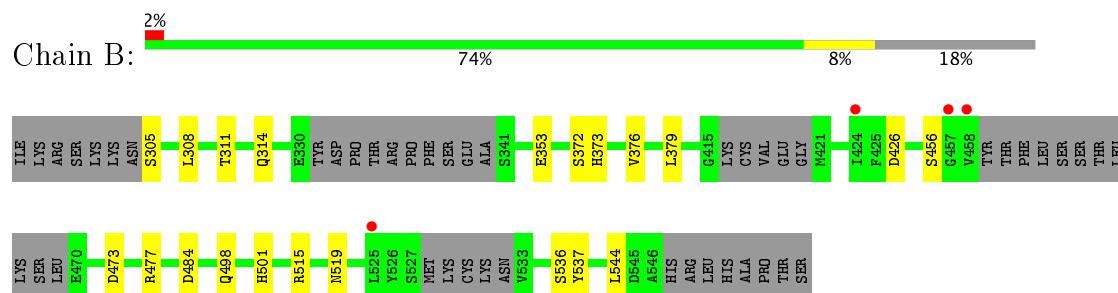
3 Residue-property plots [i](#)

These plots are drawn for all protein, RNA and DNA chains in the entry. The first graphic for a chain summarises the proportions of the various outlier classes displayed in the second graphic. The second graphic shows the sequence view annotated by issues in geometry and electron density. Residues are color-coded according to the number of geometric quality criteria for which they contain at least one outlier: green = 0, yellow = 1, orange = 2 and red = 3 or more. A red dot above a residue indicates a poor fit to the electron density ($RSRZ > 2$). Stretches of 2 or more consecutive residues without any outlier are shown as a green connector. Residues present in the sample, but not in the model, are shown in grey.

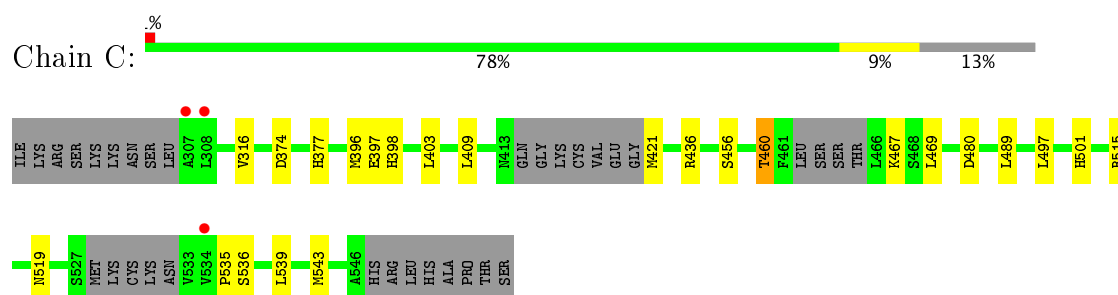
- Molecule 1: Estrogen receptor



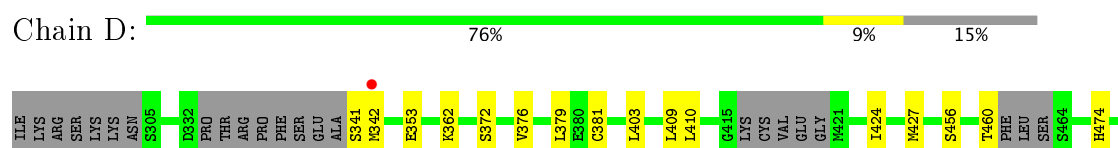
- Molecule 1: Estrogen receptor



- Molecule 1: Estrogen receptor



- Molecule 1: Estrogen receptor



D484		Q498	H501	Q502	R515	N519	Y526 SER	SER	MET	LYS	CYS	LYS	ASN	VAL	V534	L541	L544	D545	A546	HIS	ARG	LEU	HIS	ALA	PRO	THR	SER
------	--	------	------	------	------	------	-------------	-----	-----	-----	-----	-----	-----	-----	------	------	------	------	------	-----	-----	-----	-----	-----	-----	-----	-----

4 Data and refinement statistics

Property	Value	Source
Space group	P 1	Depositor
Cell constants a, b, c, α , β , γ	53.43Å 58.56Å 93.77Å 80.27° 75.04° 62.84°	Depositor
Resolution (Å)	46.29 – 2.25 46.29 – 2.25	Depositor EDS
% Data completeness (in resolution range)	85.0 (46.29-2.25) 86.1 (46.29-2.25)	Depositor EDS
R_{merge}	0.07	Depositor
R_{sym}	(Not available)	Depositor
$\langle I/\sigma(I) \rangle$ ¹	2.87 (at 2.24Å)	Xtriage
Refinement program	PHENIX 1.9_1690	Depositor
R, R_{free}	0.207 , 0.238 0.212 , 0.240	Depositor DCC
R_{free} test set	1922 reflections (4.99%)	DCC
Wilson B-factor (Å ²)	32.7	Xtriage
Anisotropy	0.532	Xtriage
Bulk solvent k_{sol} (e/Å ³), B_{sol} (Å ²)	0.36 , 56.1	EDS
L-test for twinning ²	$\langle L \rangle = 0.48$, $\langle L^2 \rangle = 0.32$	Xtriage
Estimated twinning fraction	0.156 for h,h-k,h-l	Xtriage
F_o, F_c correlation	0.94	EDS
Total number of atoms	7235	wwPDB-VP
Average B, all atoms (Å ²)	35.0	wwPDB-VP

Xtriage's analysis on translational NCS is as follows: *The largest off-origin peak in the Patterson function is 7.44% of the height of the origin peak. No significant pseudotranslation is detected.*

¹Intensities estimated from amplitudes.

²Theoretical values of $\langle |L| \rangle$, $\langle L^2 \rangle$ for acentric reflections are 0.5, 0.333 respectively for untwinned datasets, and 0.375, 0.2 for perfectly twinned datasets.

5 Model quality [i](#)

5.1 Standard geometry [i](#)

Bond lengths and bond angles in the following residue types are not validated in this section: 7EC

The Z score for a bond length (or angle) is the number of standard deviations the observed value is removed from the expected value. A bond length (or angle) with $|Z| > 5$ is considered an outlier worth inspection. RMSZ is the root-mean-square of all Z scores of the bond lengths (or angles).

Mol	Chain	Bond lengths		Bond angles	
		RMSZ	$\# Z > 5$	RMSZ	$\# Z > 5$
1	A	0.21	0/1738	0.35	0/2357
1	B	0.20	0/1675	0.35	0/2267
1	C	0.21	0/1773	0.38	0/2403
1	D	0.20	0/1724	0.35	0/2332
All	All	0.20	0/6910	0.36	0/9359

There are no bond length outliers.

There are no bond angle outliers.

There are no chirality outliers.

There are no planarity outliers.

5.2 Too-close contacts [i](#)

In the following table, the Non-H and H(model) columns list the number of non-hydrogen atoms and hydrogen atoms in the chain respectively. The H(added) column lists the number of hydrogen atoms added and optimized by MolProbity. The Clashes column lists the number of clashes within the asymmetric unit, whereas Symm-Clashes lists symmetry related clashes.

Mol	Chain	Non-H	H(model)	H(added)	Clashes	Symm-Clashes
1	A	1706	0	1684	9	0
1	B	1645	0	1653	15	0
1	C	1738	0	1739	17	0
1	D	1697	0	1712	16	0
2	A	33	0	0	0	0
2	B	34	0	0	1	0
2	C	34	0	0	0	0
2	D	34	0	0	1	0
3	A	87	0	0	2	0

Continued on next page...

Continued from previous page...

Mol	Chain	Non-H	H(model)	H(added)	Clashes	Symm-Clashes
3	B	77	0	0	6	0
3	C	77	0	0	5	0
3	D	73	0	0	6	0
All	All	7235	0	6788	55	0

The all-atom clashscore is defined as the number of clashes found per 1000 atoms (including hydrogen atoms). The all-atom clashscore for this structure is 4.

All (55) close contacts within the same asymmetric unit are listed below, sorted by their clash magnitude.

Atom-1	Atom-2	Interatomic distance (Å)	Clash overlap (Å)
1:D:502:GLN:OE1	3:D:701:HOH:O	1.95	0.82
1:A:519:ASN:HD22	1:B:519:ASN:HD22	1.27	0.80
1:C:519:ASN:HD22	1:D:519:ASN:HD22	1.29	0.80
1:C:421:MET:N	3:C:702:HOH:O	2.19	0.76
1:B:426:ASP:O	3:B:701:HOH:O	2.04	0.73
1:C:377:HIS:NE2	1:C:460:THR:O	2.24	0.71
1:C:421:MET:N	3:C:704:HOH:O	2.25	0.69
1:B:311:THR:H	1:B:314:GLN:HE21	1.39	0.68
1:D:484:ASP:OD1	3:D:702:HOH:O	2.12	0.67
1:C:467:LYS:HA	1:C:469:LEU:H	1.60	0.66
1:D:362:LYS:NZ	3:D:706:HOH:O	2.24	0.66
1:B:484:ASP:OD1	3:B:702:HOH:O	2.14	0.65
1:A:413:ASN:O	3:A:701:HOH:O	2.14	0.65
1:C:374:ASP:OD2	3:C:701:HOH:O	2.14	0.65
1:B:536:SER:OG	3:B:703:HOH:O	2.15	0.64
1:B:305:SER:HB3	1:B:308:LEU:HG	1.82	0.61
1:B:498:GLN:HA	1:B:501[B]:HIS:CE1	2.37	0.59
1:D:379:LEU:HD12	1:D:544:LEU:HD11	1.87	0.57
1:D:498:GLN:HA	1:D:501:HIS:CE1	2.40	0.56
1:C:497:LEU:O	1:C:501:HIS:ND1	2.39	0.56
1:B:379:LEU:HD12	1:B:544:LEU:HD11	1.89	0.54
1:D:474:HIS:ND1	3:D:709:HOH:O	2.34	0.52
1:D:353:GLU:OE1	2:D:601[A]:7EC:O03	2.28	0.52
1:B:456:SER:HA	1:B:515:ARG:NH2	2.26	0.51
1:A:421:MET:N	3:A:709:HOH:O	2.45	0.50
1:B:353:GLU:OE1	2:B:601[A]:7EC:O03	2.30	0.50
1:B:473:ASP:OD1	3:B:704:HOH:O	2.20	0.48
1:D:424:ILE:HA	1:D:427:MET:HE2	1.96	0.48
1:C:467:LYS:HA	1:C:469:LEU:N	2.28	0.46
1:A:403:LEU:HD13	1:A:409:LEU:HD13	1.96	0.46

Continued on next page...

Continued from previous page...

Atom-1	Atom-2	Interatomic distance (Å)	Clash overlap (Å)
1:A:381:CYS:SG	3:B:774:HOH:O	2.55	0.46
1:A:456:SER:HA	1:A:515:ARG:NH2	2.32	0.44
1:B:372:SER:O	1:B:376:VAL:HG23	2.16	0.44
1:D:456:SER:HA	1:D:515:ARG:NH2	2.32	0.44
1:D:460:THR:O	3:D:704:HOH:O	2.21	0.44
1:C:397:GLU:OE1	1:C:397:GLU:N	2.36	0.44
1:D:342:MET:SD	1:D:410:LEU:HD21	2.57	0.44
1:C:316:VAL:HG21	1:C:489:LEU:HD21	1.99	0.44
1:A:316:VAL:HG21	1:A:489:LEU:HD21	2.00	0.43
1:B:305:SER:N	3:B:714:HOH:O	2.51	0.43
1:C:456:SER:HA	1:C:515:ARG:NH2	2.34	0.43
1:A:535:PRO:O	1:A:539:LEU:HB3	2.19	0.43
1:C:480:ASP:OD1	3:C:703:HOH:O	2.21	0.42
1:A:354:LEU:O	1:A:358:ILE:HG12	2.19	0.42
1:B:373:HIS:ND1	1:B:537:TYR:OH	2.35	0.42
1:C:403:LEU:HD13	1:C:409:LEU:HD13	2.00	0.42
1:D:403:LEU:HD13	1:D:409:LEU:HD13	2.02	0.42
1:B:473:ASP:O	1:B:477:ARG:HG3	2.20	0.41
1:C:539:LEU:O	1:C:543:MET:HG3	2.21	0.41
1:D:341:SER:OG	3:D:705:HOH:O	2.22	0.41
1:C:397:GLU:HG2	1:C:398:HIS:CD2	2.56	0.41
1:C:535:PRO:O	1:C:539:LEU:HB3	2.21	0.41
3:C:772:HOH:O	1:D:381:CYS:SG	2.40	0.41
1:C:396:MET:O	1:C:436:ARG:HD3	2.22	0.40
1:D:372:SER:O	1:D:376:VAL:HG23	2.20	0.40

There are no symmetry-related clashes.

5.3 Torsion angles

5.3.1 Protein backbone

In the following table, the Percentiles column shows the percent Ramachandran outliers of the chain as a percentile score with respect to all X-ray entries followed by that with respect to entries of similar resolution.

The Analysed column shows the number of residues for which the backbone conformation was analysed, and the total number of residues.

Mol	Chain	Analysed	Favoured	Allowed	Outliers	Percentiles
1	A	214/257 (83%)	208 (97%)	4 (2%)	2 (1%)	20 17

Continued on next page...

Continued from previous page...

Mol	Chain	Analysed	Favoured	Allowed	Outliers	Percentiles	
1	B	203/257 (79%)	199 (98%)	4 (2%)	0	100	100
1	C	217/257 (84%)	212 (98%)	4 (2%)	1 (0%)	32	33
1	D	209/257 (81%)	205 (98%)	4 (2%)	0	100	100
All	All	843/1028 (82%)	824 (98%)	16 (2%)	3 (0%)	38	42

All (3) Ramachandran outliers are listed below:

Mol	Chain	Res	Type
1	A	536	SER
1	C	536	SER
1	A	460	THR

5.3.2 Protein sidechains ⓘ

In the following table, the Percentiles column shows the percent sidechain outliers of the chain as a percentile score with respect to all X-ray entries followed by that with respect to entries of similar resolution.

The Analysed column shows the number of residues for which the sidechain conformation was analysed, and the total number of residues.

Mol	Chain	Analysed	Rotameric	Outliers	Percentiles	
1	A	180/232 (78%)	179 (99%)	1 (1%)	89	93
1	B	177/232 (76%)	177 (100%)	0	100	100
1	C	186/232 (80%)	185 (100%)	1 (0%)	91	94
1	D	184/232 (79%)	183 (100%)	1 (0%)	91	94
All	All	727/928 (78%)	724 (100%)	3 (0%)	93	95

All (3) residues with a non-rotameric sidechain are listed below:

Mol	Chain	Res	Type
1	A	536	SER
1	C	460	THR
1	D	541	LEU

Some sidechains can be flipped to improve hydrogen bonding and reduce clashes. All (9) such sidechains are listed below:

Mol	Chain	Res	Type
1	A	373	HIS
1	A	377	HIS
1	A	519	ASN
1	B	314	GLN
1	B	356	HIS
1	C	373	HIS
1	C	519	ASN
1	D	314	GLN
1	D	377	HIS

5.3.3 RNA [i](#)

There are no RNA molecules in this entry.

5.4 Non-standard residues in protein, DNA, RNA chains [i](#)

There are no non-standard protein/DNA/RNA residues in this entry.

5.5 Carbohydrates [i](#)

There are no carbohydrates in this entry.

5.6 Ligand geometry [i](#)

4 ligands are modelled in this entry.

In the following table, the Counts columns list the number of bonds (or angles) for which Mogul statistics could be retrieved, the number of bonds (or angles) that are observed in the model and the number of bonds (or angles) that are defined in the Chemical Component Dictionary. The Link column lists molecule types, if any, to which the group is linked. The Z score for a bond length (or angle) is the number of standard deviations the observed value is removed from the expected value. A bond length (or angle) with $|Z| > 2$ is considered an outlier worth inspection. RMSZ is the root-mean-square of all Z scores of the bond lengths (or angles).

Mol	Type	Chain	Res	Link	Bond lengths			Bond angles		
					Counts	RMSZ	$\# Z > 2$	Counts	RMSZ	$\# Z > 2$
2	7EC	A	601	-	33,37,45	2.21	14 (42%)	44,54,65	2.47	10 (22%)
2	7EC	B	601[A]	-	34,38,45	2.49	16 (47%)	44,55,65	2.69	13 (29%)
2	7EC	C	601	-	34,38,45	2.50	15 (44%)	44,55,65	2.68	12 (27%)
2	7EC	D	601[A]	-	34,38,45	2.48	16 (47%)	44,55,65	2.56	12 (27%)

In the following table, the Chirals column lists the number of chiral outliers, the number of chiral centers analysed, the number of these observed in the model and the number defined in the Chemical Component Dictionary. Similar counts are reported in the Torsion and Rings columns. '-' means no outliers of that kind were identified.

Mol	Type	Chain	Res	Link	Chirals	Torsions	Rings
2	7EC	A	601	-	-	0/18/52/57	0/3/5/6
2	7EC	B	601[A]	-	-	0/21/55/57	0/3/5/6
2	7EC	C	601	-	-	0/21/55/57	0/3/5/6
2	7EC	D	601[A]	-	-	0/21/55/57	0/3/5/6

All (61) bond length outliers are listed below:

Mol	Chain	Res	Type	Atoms	Z	Observed(Å)	Ideal(Å)
2	C	601	7EC	C10-C08	-6.59	1.35	1.48
2	B	601[A]	7EC	C10-C08	-6.47	1.35	1.48
2	A	601	7EC	C04-C07	-6.44	1.35	1.48
2	C	601	7EC	C04-C07	-6.43	1.35	1.48
2	D	601[A]	7EC	C10-C08	-6.42	1.35	1.48
2	A	601	7EC	C10-C08	-6.41	1.35	1.48
2	D	601[A]	7EC	C04-C07	-6.36	1.35	1.48
2	B	601[A]	7EC	C04-C07	-6.35	1.35	1.48
2	C	601	7EC	C15-C10	-2.60	1.35	1.39
2	D	601[A]	7EC	C15-C10	-2.51	1.35	1.39
2	B	601[A]	7EC	C15-C10	-2.49	1.35	1.39
2	A	601	7EC	C11-C10	-2.49	1.35	1.39
2	C	601	7EC	C11-C10	-2.45	1.35	1.39
2	A	601	7EC	C15-C10	-2.44	1.35	1.39
2	A	601	7EC	C03-C04	-2.42	1.35	1.39
2	C	601	7EC	C03-C04	-2.41	1.35	1.39
2	C	601	7EC	C05-C04	-2.41	1.35	1.39
2	C	601	7EC	C14-C15	-2.40	1.34	1.38
2	D	601[A]	7EC	C03-C04	-2.38	1.35	1.39
2	A	601	7EC	C05-C04	-2.38	1.35	1.39
2	B	601[A]	7EC	C11-C10	-2.38	1.35	1.39
2	B	601[A]	7EC	C03-C04	-2.37	1.35	1.39
2	D	601[A]	7EC	C11-C10	-2.36	1.35	1.39
2	B	601[A]	7EC	C05-C04	-2.31	1.35	1.39
2	B	601[A]	7EC	C14-C15	-2.31	1.34	1.38
2	D	601[A]	7EC	C05-C04	-2.27	1.35	1.39
2	A	601	7EC	C02-C03	-2.26	1.34	1.38
2	C	601	7EC	C06-C05	-2.25	1.34	1.38
2	A	601	7EC	C12-C11	-2.22	1.34	1.38
2	D	601[A]	7EC	C14-C15	-2.22	1.34	1.38
2	A	601	7EC	C02-C01	-2.21	1.34	1.38

Continued on next page...

Continued from previous page...

Mol	Chain	Res	Type	Atoms	Z	Observed(Å)	Ideal(Å)
2	D	601[A]	7EC	C02-C01	-2.21	1.34	1.38
2	B	601[A]	7EC	C02-C01	-2.21	1.34	1.38
2	D	601[A]	7EC	C06-C05	-2.21	1.34	1.38
2	D	601[A]	7EC	C02-C03	-2.20	1.34	1.38
2	C	601	7EC	C02-C03	-2.19	1.34	1.38
2	B	601[A]	7EC	C02-C03	-2.18	1.34	1.38
2	C	601	7EC	C02-C01	-2.17	1.34	1.38
2	B	601[A]	7EC	C12-C11	-2.17	1.34	1.38
2	A	601	7EC	C06-C05	-2.17	1.34	1.38
2	A	601	7EC	C14-C15	-2.16	1.34	1.38
2	B	601[A]	7EC	C06-C05	-2.16	1.34	1.38
2	D	601[A]	7EC	C12-C11	-2.15	1.34	1.38
2	C	601	7EC	C12-C11	-2.15	1.34	1.38
2	D	601[A]	7EC	C06-C01	-2.13	1.34	1.38
2	C	601	7EC	C06-C01	-2.10	1.34	1.38
2	D	601[A]	7EC	O01-C09	-2.09	1.40	1.43
2	B	601[A]	7EC	C06-C01	-2.07	1.34	1.38
2	A	601	7EC	C06-C01	-2.06	1.34	1.38
2	B	601[A]	7EC	O01-C09	-2.05	1.41	1.43
2	C	601	7EC	O01-C09	-2.05	1.41	1.43
2	A	601	7EC	O01-C09	-2.04	1.41	1.43
2	B	601[A]	7EC	O05-S01	2.18	1.46	1.43
2	D	601[A]	7EC	O06-S01	2.21	1.46	1.43
2	D	601[A]	7EC	O05-S01	2.21	1.46	1.43
2	C	601	7EC	O06-S01	2.24	1.46	1.43
2	B	601[A]	7EC	O06-S01	2.26	1.46	1.43
2	A	601	7EC	O04-S01	3.10	1.67	1.47
2	C	601	7EC	O04-S01	6.82	1.67	1.57
2	D	601[A]	7EC	O04-S01	6.89	1.67	1.57
2	B	601[A]	7EC	O04-S01	7.01	1.67	1.57

All (47) bond angle outliers are listed below:

Mol	Chain	Res	Type	Atoms	Z	Observed(°)	Ideal(°)
2	B	601[A]	7EC	O06-S01-C17	-12.28	97.59	109.24
2	D	601[A]	7EC	O06-S01-C17	-11.54	98.29	109.24
2	C	601	7EC	O06-S01-C17	-10.09	99.66	109.24
2	A	601	7EC	O06-S01-C17	-9.98	99.77	109.24
2	C	601	7EC	O05-S01-C17	-8.59	101.08	109.24
2	A	601	7EC	O05-S01-C17	-8.58	101.09	109.24
2	B	601[A]	7EC	O05-S01-C17	-7.26	102.35	109.24
2	D	601[A]	7EC	O05-S01-C17	-6.60	102.98	109.24

Continued on next page...

Continued from previous page...

Mol	Chain	Res	Type	Atoms	Z	Observed(°)	Ideal(°)
2	A	601	7EC	C12-C13-C14	-3.14	115.25	120.19
2	D	601[A]	7EC	C12-C13-C14	-3.11	115.29	120.19
2	B	601[A]	7EC	C12-C13-C14	-3.04	115.40	120.19
2	C	601	7EC	C12-C13-C14	-2.94	115.56	120.19
2	A	601	7EC	C09-C08-C07	-2.50	103.97	108.28
2	C	601	7EC	C09-C08-C07	-2.43	104.08	108.28
2	B	601[A]	7EC	C09-C08-C07	-2.38	104.17	108.28
2	B	601[A]	7EC	C03-C04-C05	-2.35	115.33	118.58
2	D	601[A]	7EC	C03-C04-C05	-2.34	115.34	118.58
2	D	601[A]	7EC	C09-C08-C07	-2.33	104.25	108.28
2	C	601	7EC	C03-C04-C05	-2.32	115.37	118.58
2	A	601	7EC	C03-C04-C05	-2.25	115.46	118.58
2	A	601	7EC	C11-C10-C15	-2.20	115.53	118.58
2	D	601[A]	7EC	C11-C10-C15	-2.12	115.64	118.58
2	B	601[A]	7EC	C11-C10-C15	-2.09	115.69	118.58
2	B	601[A]	7EC	C15-C14-C13	2.02	122.28	119.74
2	D	601[A]	7EC	C15-C14-C13	2.09	122.36	119.74
2	A	601	7EC	C11-C10-C08	2.14	123.67	120.91
2	C	601	7EC	C11-C12-C13	2.17	122.47	119.74
2	B	601[A]	7EC	C11-C12-C13	2.26	122.57	119.74
2	D	601[A]	7EC	C11-C12-C13	2.27	122.58	119.74
2	D	601[A]	7EC	C10-C08-C07	2.35	133.60	128.28
2	B	601[A]	7EC	C11-C10-C08	2.47	124.11	120.91
2	A	601	7EC	C11-C12-C13	2.48	122.84	119.74
2	D	601[A]	7EC	C04-C07-C08	2.49	133.89	128.28
2	C	601	7EC	C11-C10-C08	2.60	124.27	120.91
2	B	601[A]	7EC	C04-C07-C08	2.67	134.31	128.28
2	B	601[A]	7EC	C10-C08-C07	2.71	134.40	128.28
2	C	601	7EC	C21-N01-C25	2.77	115.14	108.87
2	A	601	7EC	C10-C08-C07	2.77	134.53	128.28
2	A	601	7EC	C04-C07-C08	2.78	134.56	128.28
2	C	601	7EC	C04-C07-C08	2.97	134.99	128.28
2	C	601	7EC	C10-C08-C07	3.45	136.07	128.28
2	D	601[A]	7EC	O04-S01-O05	3.72	115.81	106.97
2	B	601[A]	7EC	O04-S01-O06	3.76	115.89	106.97
2	C	601	7EC	O04-S01-O06	3.77	115.91	106.97
2	D	601[A]	7EC	O04-S01-O06	3.82	116.03	106.97
2	B	601[A]	7EC	O04-S01-O05	3.88	116.17	106.97
2	C	601	7EC	O04-S01-O05	4.38	117.36	106.97

There are no chirality outliers.

There are no torsion outliers.

There are no ring outliers.

2 monomers are involved in 2 short contacts:

Mol	Chain	Res	Type	Clashes	Symm-Clashes
2	B	601[A]	7EC	1	0
2	D	601[A]	7EC	1	0

5.7 Other polymers [i](#)

There are no such residues in this entry.

5.8 Polymer linkage issues [i](#)

There are no chain breaks in this entry.

6 Fit of model and data [i](#)

6.1 Protein, DNA and RNA chains [i](#)

In the following table, the column labelled ‘#RSRZ> 2’ contains the number (and percentage) of RSRZ outliers, followed by percent RSRZ outliers for the chain as percentile scores relative to all X-ray entries and entries of similar resolution. The OWAB column contains the minimum, median, 95th percentile and maximum values of the occupancy-weighted average B-factor per residue. The column labelled ‘Q< 0.9’ lists the number of (and percentage) of residues with an average occupancy less than 0.9.

Mol	Chain	Analysed	<RSRZ>	#RSRZ>2	OWAB(Å ²)	Q<0.9
1	A	222/257 (86%)	-0.18	6 (2%) 55 58	15, 30, 60, 84	0
1	B	211/257 (82%)	-0.15	4 (1%) 67 70	14, 33, 70, 84	0
1	C	224/257 (87%)	-0.05	3 (1%) 77 80	14, 33, 68, 82	0
1	D	219/257 (85%)	-0.17	1 (0%) 90 91	13, 33, 66, 77	0
All	All	876/1028 (85%)	-0.14	14 (1%) 72 74	13, 33, 69, 84	0

All (14) RSRZ outliers are listed below:

Mol	Chain	Res	Type	RSRZ
1	B	457	GLY	3.5
1	C	307	ALA	3.5
1	C	308	LEU	2.9
1	D	342	MET	2.7
1	A	524	HIS	2.6
1	C	534	VAL	2.5
1	A	307	ALA	2.5
1	A	461	PHE	2.4
1	B	458	VAL	2.4
1	A	533	VAL	2.1
1	A	425	PHE	2.1
1	B	424	ILE	2.1
1	A	309	SER	2.1
1	B	525	LEU	2.0

6.2 Non-standard residues in protein, DNA, RNA chains [i](#)

There are no non-standard protein/DNA/RNA residues in this entry.

6.3 Carbohydrates [i](#)

There are no carbohydrates in this entry.

6.4 Ligands [i](#)

In the following table, the Atoms column lists the number of modelled atoms in the group and the number defined in the chemical component dictionary. LLDF column lists the quality of electron density of the group with respect to its neighbouring residues in protein, DNA or RNA chains. The B-factors column lists the minimum, median, 95th percentile and maximum values of B factors of atoms in the group. The column labelled 'Q< 0.9' lists the number of atoms with occupancy less than 0.9.

Mol	Type	Chain	Res	Atoms	RSCC	RSR	LLDF	B-factors(\AA^2)	Q<0.9
2	7EC	B	601[A]	34/40	0.83	0.21	1.45	21,31,73,74	34
2	7EC	D	601[A]	34/40	0.88	0.17	0.73	20,32,90,90	34
2	7EC	A	601	33/40	0.90	0.17	0.40	20,31,65,66	33
2	7EC	C	601	34/40	0.92	0.14	-0.32	22,32,84,86	0

6.5 Other polymers [i](#)

There are no such residues in this entry.