



Full wwPDB X-ray Structure Validation Report ⓘ

Feb 14, 2017 – 01:43 pm GMT

PDB ID : 1TQS
Title : Golgi alpha-Mannosidase II In Complex With Salacinol
Authors : Kuntz, D.A.; Ghavami, A.; Johnston, B.D.; Pinto, B.M.; Rose, D.R.
Deposited on : 2004-06-18
Resolution : 1.30 Å(reported)

This is a Full wwPDB X-ray Structure Validation Report for a publicly released PDB entry.

We welcome your comments at validation@mail.wwpdb.org

A user guide is available at

<http://wwpdb.org/validation/2016/XrayValidationReportHelp>

with specific help available everywhere you see the ⓘ symbol.

The following versions of software and data (see [references ⓘ](#)) were used in the production of this report:

MolProbity : 4.02b-467
Mogul : 1.7.2 (RC1), CSD as538be (2017)
Xtriage (Phenix) : 1.9-1692
EDS : trunk28620
Percentile statistics : 20161228.v01 (using entries in the PDB archive December 28th 2016)
Refmac : 5.8.0135
CCP4 : 6.5.0
Ideal geometry (proteins) : Engh & Huber (2001)
Ideal geometry (DNA, RNA) : Parkinson et al. (1996)
Validation Pipeline (wwPDB-VP) : recalc28949

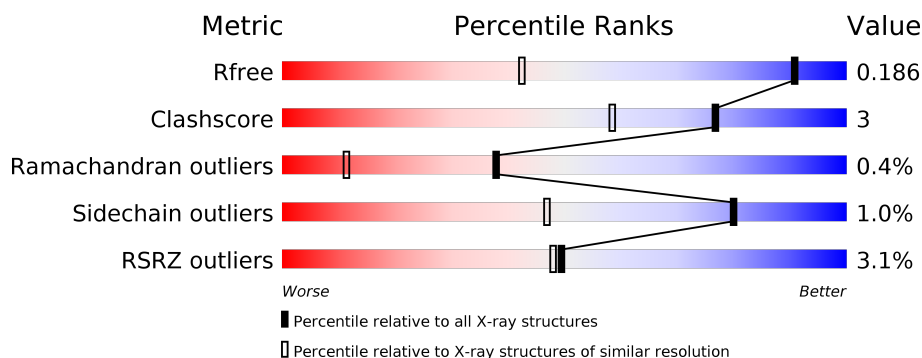
1 Overall quality at a glance

The following experimental techniques were used to determine the structure:

X-RAY DIFFRACTION

The reported resolution of this entry is 1.30 Å.

Percentile scores (ranging between 0-100) for global validation metrics of the entry are shown in the following graphic. The table shows the number of entries on which the scores are based.



Metric	Whole archive (#Entries)	Similar resolution (#Entries, resolution range(Å))
R_{free}	100719	1131 (1.32-1.28)
Clashscore	112137	1185 (1.32-1.28)
Ramachandran outliers	110173	1138 (1.32-1.28)
Sidechain outliers	110143	1138 (1.32-1.28)
RSRZ outliers	101464	1133 (1.32-1.28)

The table below summarises the geometric issues observed across the polymeric chains and their fit to the electron density. The red, orange, yellow and green segments on the lower bar indicate the fraction of residues that contain outliers for ≥ 3 , 2, 1 and 0 types of geometric quality criteria. A grey segment represents the fraction of residues that are not modelled. The numeric value for each fraction is indicated below the corresponding segment, with a dot representing fractions $\leq 5\%$. The upper red bar (where present) indicates the fraction of residues that have poor fit to the electron density. The numeric value is given above the bar.

Mol	Chain	Length	Quality of chain
1	A	1045	<div> <div>3%</div> <div>88%</div> <div>8%</div> <div>••</div> </div>

The following table lists non-polymeric compounds, carbohydrate monomers and non-standard residues in protein, DNA, RNA chains that are outliers for geometric or electron-density-fit criteria:

Mol	Type	Chain	Res	Chirality	Geometry	Clashes	Electron density
4	SSO	A	1201	X	-	-	X

2 Entry composition

There are 6 unique types of molecules in this entry. The entry contains 9421 atoms, of which 0 are hydrogens and 0 are deuteriums.

In the tables below, the ZeroOcc column contains the number of atoms modelled with zero occupancy, the AltConf column contains the number of residues with at least one atom in alternate conformation and the Trace column contains the number of residues modelled with at most 2 atoms.

- Molecule 1 is a protein called Alpha-mannosidase II.

Mol	Chain	Residues	Atoms					ZeroOcc	AltConf	Trace
1	A	1014	Total	C	N	O	S	0	17	0
			8247	5247	1442	1518	40			

There are 13 discrepancies between the modelled and reference sequences:

Chain	Residue	Modelled	Actual	Comment	Reference
A	1	ARG	-	EXPRESSION TAG	UNP Q24451
A	2	SER	-	EXPRESSION TAG	UNP Q24451
A	3	SER	-	EXPRESSION TAG	UNP Q24451
A	4	HIS	-	EXPRESSION TAG	UNP Q24451
A	5	HIS	-	EXPRESSION TAG	UNP Q24451
A	6	HIS	-	EXPRESSION TAG	UNP Q24451
A	7	HIS	-	EXPRESSION TAG	UNP Q24451
A	8	HIS	-	EXPRESSION TAG	UNP Q24451
A	9	HIS	-	EXPRESSION TAG	UNP Q24451
A	10	GLY	-	EXPRESSION TAG	UNP Q24451
A	11	GLU	-	EXPRESSION TAG	UNP Q24451
A	12	PHE	-	EXPRESSION TAG	UNP Q24451
A	907	LYS	GLU	SEE REMARK 999	UNP Q24451

- Molecule 2 is SUGAR (N-ACETYL-D-GLUCOSAMINE) (three-letter code: NAG) (formula: $C_8H_{15}NO_6$).

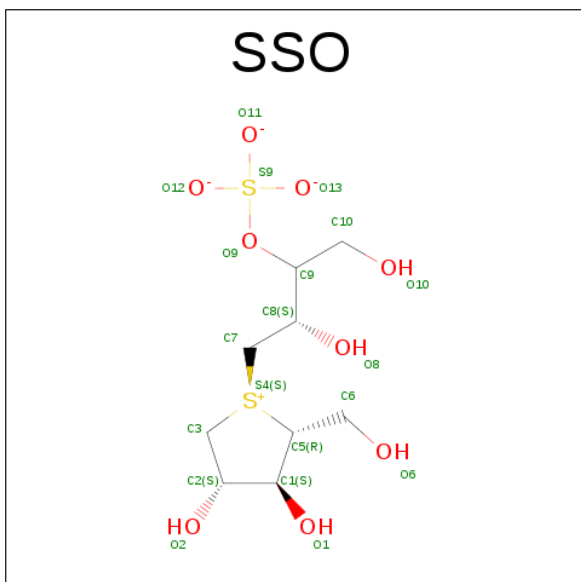


Mol	Chain	Residues	Atoms				ZeroOcc	AltConf
2	A	1	Total	C	N	O	0	0
			14	8	1	5		

- Molecule 3 is ZINC ION (three-letter code: ZN) (formula: Zn).

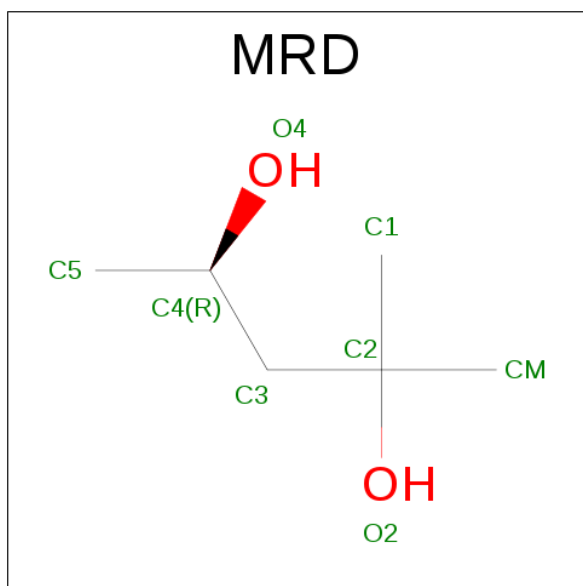
Mol	Chain	Residues	Atoms		ZeroOcc	AltConf
3	A	1	Total	Zn	0	0
			1	1		

- Molecule 4 is 1,4-DIDEOXY-1,4-[[2S,3S)-2,4-DIHYDROXY-3-(SULFOXY)BUTYL]EPISULFONIUMYLIDENE]-D-ARABINITOL INNER SALT (three-letter code: SSO) (formula: C₉H₁₈O₉S₂).



Mol	Chain	Residues	Atoms				ZeroOcc	AltConf
4	A	1	Total	C	O	S	0	0
			20	9	9	2		

- Molecule 5 is (4R)-2-METHYLPENTANE-2,4-DIOL (three-letter code: MRD) (formula: $C_6H_{14}O_2$).



Mol	Chain	Residues	Atoms				ZeroOcc	AltConf
5	A	1	Total	C	O		0	0
			8	6	2			

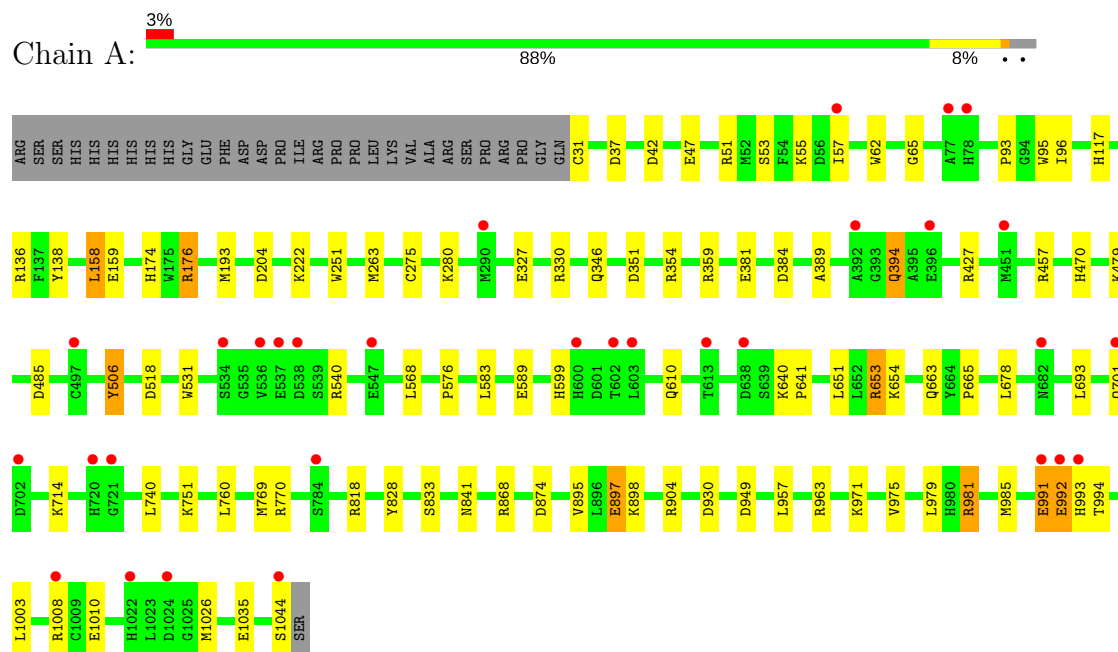
- Molecule 6 is water.

Mol	Chain	Residues	Atoms		ZeroOcc	AltConf
6	A	1131	Total	O	0	0
			1131	1131		

3 Residue-property plots [i](#)

These plots are drawn for all protein, RNA and DNA chains in the entry. The first graphic for a chain summarises the proportions of the various outlier classes displayed in the second graphic. The second graphic shows the sequence view annotated by issues in geometry and electron density. Residues are color-coded according to the number of geometric quality criteria for which they contain at least one outlier: green = 0, yellow = 1, orange = 2 and red = 3 or more. A red dot above a residue indicates a poor fit to the electron density ($RSRZ > 2$). Stretches of 2 or more consecutive residues without any outlier are shown as a green connector. Residues present in the sample, but not in the model, are shown in grey.

• Molecule 1: Alpha-mannosidase II



4 Data and refinement statistics

Property	Value	Source
Space group	P 21 21 21	Depositor
Cell constants a, b, c, α , β , γ	68.82Å 109.63Å 138.85Å 90.00° 90.00° 90.00°	Depositor
Resolution (Å)	29.33 – 1.30 29.82 – 1.20	Depositor EDS
% Data completeness (in resolution range)	97.6 (29.33-1.30) 94.2 (29.82-1.20)	Depositor EDS
R_{merge}	0.11	Depositor
R_{sym}	(Not available)	Depositor
$\langle I/\sigma(I) \rangle$ ¹	2.48 (at 1.20Å)	Xtriage
Refinement program	CNS 1.1	Depositor
R, R_{free}	0.163 , 0.182 0.166 , 0.186	Depositor DCC
R_{free} test set	5471 reflections (2.18%)	DCC
Wilson B-factor (Å ²)	9.7	Xtriage
Anisotropy	0.066	Xtriage
Bulk solvent k_{sol} (e/Å ³), B_{sol} (Å ²)	0.37 , 47.0	EDS
L-test for twinning ²	$\langle L \rangle = 0.49$, $\langle L^2 \rangle = 0.32$	Xtriage
Estimated twinning fraction	No twinning to report.	Xtriage
F_o, F_c correlation	0.97	EDS
Total number of atoms	9421	wwPDB-VP
Average B, all atoms (Å ²)	13.0	wwPDB-VP

Xtriage's analysis on translational NCS is as follows: *The largest off-origin peak in the Patterson function is 4.03% of the height of the origin peak. No significant pseudotranslation is detected.*

¹Intensities estimated from amplitudes.

²Theoretical values of $\langle |L| \rangle$, $\langle L^2 \rangle$ for acentric reflections are 0.5, 0.333 respectively for untwinned datasets, and 0.375, 0.2 for perfectly twinned datasets.

5 Model quality

5.1 Standard geometry

Bond lengths and bond angles in the following residue types are not validated in this section: MRD, SSO, ZN, NAG

The Z score for a bond length (or angle) is the number of standard deviations the observed value is removed from the expected value. A bond length (or angle) with $|Z| > 5$ is considered an outlier worth inspection. RMSZ is the root-mean-square of all Z scores of the bond lengths (or angles).

Mol	Chain	Bond lengths		Bond angles	
		RMSZ	$\# Z > 5$	RMSZ	$\# Z > 5$
1	A	0.95	5/8550 (0.1%)	1.00	29/11609 (0.2%)

Chiral center outliers are detected by calculating the chiral volume of a chiral center and verifying if the center is modelled as a planar moiety or with the opposite hand. A planarity outlier is detected by checking planarity of atoms in a peptide group, atoms in a mainchain group or atoms of a sidechain that are expected to be planar.

Mol	Chain	#Chirality outliers	#Planarity outliers
1	A	0	1

All (5) bond length outliers are listed below:

Mol	Chain	Res	Type	Atoms	Z	Observed(Å)	Ideal(Å)
1	A	833	SER	CB-OG	-6.23	1.34	1.42
1	A	381	GLU	CD-OE1	-5.25	1.19	1.25
1	A	531	TRP	CG-CD1	5.24	1.44	1.36
1	A	506	TYR	CD1-CE1	5.24	1.47	1.39
1	A	327	GLU	CD-OE2	-5.02	1.20	1.25

All (29) bond angle outliers are listed below:

Mol	Chain	Res	Type	Atoms	Z	Observed(°)	Ideal(°)
1	A	963	ARG	NE-CZ-NH2	-10.01	115.30	120.30
1	A	981	ARG	NE-CZ-NH2	-7.68	116.46	120.30
1	A	540	ARG	NE-CZ-NH1	7.60	124.10	120.30
1	A	427	ARG	NE-CZ-NH1	7.31	123.95	120.30
1	A	818	ARG	NE-CZ-NH1	7.28	123.94	120.30
1	A	457	ARG	NE-CZ-NH2	-6.98	116.81	120.30
1	A	457	ARG	NE-CZ-NH1	6.54	123.57	120.30
1	A	359	ARG	NE-CZ-NH2	-6.46	117.07	120.30

Continued on next page...

Continued from previous page...

Mol	Chain	Res	Type	Atoms	Z	Observed(°)	Ideal(°)
1	A	930	ASP	CB-CG-OD2	6.22	123.90	118.30
1	A	193	MET	CG-SD-CE	-6.19	90.29	100.20
1	A	427	ARG	NE-CZ-NH2	-6.12	117.24	120.30
1	A	868	ARG	NE-CZ-NH1	5.93	123.27	120.30
1	A	263	MET	CG-SD-CE	5.92	109.67	100.20
1	A	981	ARG	NE-CZ-NH1	5.83	123.22	120.30
1	A	384	ASP	CB-CG-OD2	-5.77	113.11	118.30
1	A	176	ARG	NE-CZ-NH1	-5.72	117.44	120.30
1	A	874	ASP	CB-CG-OD2	-5.70	113.17	118.30
1	A	949	ASP	CB-CG-OD1	5.62	123.36	118.30
1	A	897	GLU	OE1-CD-OE2	5.52	129.93	123.30
1	A	518	ASP	N-CA-C	-5.39	96.45	111.00
1	A	540	ARG	NE-CZ-NH2	-5.38	117.61	120.30
1	A	330	ARG	NE-CZ-NH2	-5.33	117.64	120.30
1	A	485	ASP	CB-CG-OD1	5.29	123.06	118.30
1	A	665	PRO	N-CA-C	5.25	125.76	112.10
1	A	136	ARG	NE-CZ-NH2	-5.18	117.71	120.30
1	A	868	ARG	NE-CZ-NH2	-5.11	117.74	120.30
1	A	930	ASP	CB-CG-OD1	-5.06	113.75	118.30
1	A	42	ASP	CB-CG-OD2	5.04	122.83	118.30
1	A	351	ASP	CB-CG-OD2	-5.03	113.78	118.30

There are no chirality outliers.

All (1) planarity outliers are listed below:

Mol	Chain	Res	Type	Group
1	A	506	TYR	Sidechain

5.2 Too-close contacts

In the following table, the Non-H and H(model) columns list the number of non-hydrogen atoms and hydrogen atoms in the chain respectively. The H(added) column lists the number of hydrogen atoms added and optimized by MolProbity. The Clashes column lists the number of clashes within the asymmetric unit, whereas Symm-Clashes lists symmetry related clashes.

Mol	Chain	Non-H	H(model)	H(added)	Clashes	Symm-Clashes
1	A	8247	0	8043	55	0
2	A	14	0	13	2	0
3	A	1	0	0	0	0
4	A	20	0	16	0	0
5	A	8	0	14	0	0

Continued on next page...

Continued from previous page...

Mol	Chain	Non-H	H(model)	H(added)	Clashes	Symm-Clashes
6	A	1131	0	0	17	0
All	All	9421	0	8086	57	0

The all-atom clashscore is defined as the number of clashes found per 1000 atoms (including hydrogen atoms). The all-atom clashscore for this structure is 3.

All (57) close contacts within the same asymmetric unit are listed below, sorted by their clash magnitude.

Atom-1	Atom-2	Interatomic distance (Å)	Clash overlap (Å)
1:A:117[B]:HIS:HE1	1:A:354:ARG:HE	1.20	0.89
1:A:991:GLU:O	1:A:992:GLU:HG3	1.74	0.86
1:A:117[B]:HIS:CE1	1:A:354:ARG:HE	1.95	0.84
1:A:138[B]:TYR:OH	6:A:2368:HOH:O	1.97	0.82
1:A:693:LEU:HD13	6:A:1414:HOH:O	1.79	0.81
1:A:222:LYS:HD2	6:A:1543:HOH:O	1.91	0.70
1:A:47:GLU:OE2	1:A:51:ARG:HD3	1.92	0.69
1:A:57:ILE:HD11	6:A:1461:HOH:O	1.94	0.66
1:A:37:ASP:HB2	6:A:1636:HOH:O	1.96	0.65
1:A:991:GLU:O	1:A:992:GLU:CG	2.43	0.64
1:A:714:LYS:HD2	6:A:2322:HOH:O	2.00	0.62
1:A:117[B]:HIS:HE1	1:A:354:ARG:NE	1.95	0.61
1:A:651:LEU:CD1	1:A:653:ARG:HG2	2.30	0.61
1:A:678:LEU:HD12	1:A:769:MET:HE1	1.82	0.61
1:A:47:GLU:OE2	1:A:51:ARG:CD	2.49	0.60
1:A:904:ARG:HG2	1:A:985:MET:SD	2.43	0.58
1:A:992:GLU:C	1:A:992:GLU:OE2	2.42	0.58
1:A:841:ASN:O	1:A:898:LYS:HE2	2.05	0.56
1:A:158:LEU:HD23	1:A:159:GLU:N	2.20	0.56
1:A:389:ALA:HB1	1:A:394:GLN:HG2	1.88	0.56
1:A:158:LEU:HD23	1:A:158:LEU:C	2.27	0.55
1:A:568:LEU:HD12	1:A:770:ARG:HD3	1.89	0.54
1:A:280:LYS:HE2	6:A:1918:HOH:O	2.09	0.52
1:A:895:VAL:HG12	1:A:897:GLU:HG3	1.92	0.51
1:A:62:TRP:CD2	1:A:65:GLY:HA3	2.46	0.51
1:A:251:TRP:C	1:A:251:TRP:CD1	2.84	0.50
1:A:589:GLU:OE2	1:A:751:LYS:NZ	2.43	0.50
1:A:981:ARG:NE	6:A:2292:HOH:O	2.45	0.49
1:A:174:HIS:CE1	1:A:176:ARG:HD3	2.46	0.49
1:A:158:LEU:CD2	1:A:158:LEU:C	2.81	0.49
1:A:957:LEU:HD11	1:A:979:LEU:HG	1.94	0.48
1:A:389:ALA:HB1	1:A:394:GLN:CG	2.44	0.47

Continued on next page...

Continued from previous page...

Atom-1	Atom-2	Interatomic distance (Å)	Clash overlap (Å)
2:A:1046:NAG:C3	2:A:1046:NAG:H82	2.45	0.46
1:A:701:GLN:OE1	1:A:701:GLN:HA	2.16	0.46
1:A:31:CYS:N	6:A:2295:HOH:O	2.48	0.46
1:A:975:VAL:HG21	1:A:1003:LEU:CD1	2.45	0.45
1:A:346:GLN:CD	6:A:1883:HOH:O	2.54	0.45
1:A:1008:ARG:NE	1:A:1010[B]:GLU:OE1	2.49	0.45
1:A:1035:GLU:OE2	6:A:2262:HOH:O	2.21	0.44
1:A:1026:MET:HE3	6:A:2386:HOH:O	2.17	0.44
2:A:1046:NAG:H3	2:A:1046:NAG:H82	2.00	0.44
1:A:53[B]:SER:OG	1:A:55:LYS:HG2	2.17	0.43
1:A:640:LYS:HA	1:A:641:PRO:HD3	1.86	0.43
1:A:599:HIS:ND1	1:A:610:GLN:HG3	2.34	0.43
1:A:1035:GLU:CD	6:A:2262:HOH:O	2.56	0.43
1:A:740:LEU:HD22	1:A:760:LEU:HD22	2.01	0.42
1:A:576:PRO:HG3	1:A:663:GLN:HB2	2.02	0.42
1:A:96:ILE:HG23	1:A:479:LYS:CE	2.49	0.42
1:A:971:LYS:HE2	1:A:971:LYS:HB2	1.83	0.42
1:A:981:ARG:CZ	6:A:2292:HOH:O	2.67	0.41
1:A:96:ILE:HG23	1:A:479:LYS:HE2	2.01	0.41
1:A:117[B]:HIS:CE1	1:A:354:ARG:NE	2.75	0.41
1:A:346:GLN:NE2	6:A:1883:HOH:O	2.53	0.41
1:A:37:ASP:CB	6:A:1636:HOH:O	2.63	0.41
1:A:93:PRO:HD2	1:A:470:HIS:CE1	2.55	0.41
1:A:37:ASP:N	6:A:1636:HOH:O	2.31	0.40
1:A:583:LEU:HD12	1:A:583:LEU:HA	1.89	0.40

There are no symmetry-related clashes.

5.3 Torsion angles [i](#)

5.3.1 Protein backbone [i](#)

In the following table, the Percentiles column shows the percent Ramachandran outliers of the chain as a percentile score with respect to all X-ray entries followed by that with respect to entries of similar resolution.

The Analysed column shows the number of residues for which the backbone conformation was analysed, and the total number of residues.

Mol	Chain	Analysed	Favoured	Allowed	Outliers	Percentiles
1	A	1029/1045 (98%)	1005 (98%)	20 (2%)	4 (0%)	38 11

All (4) Ramachandran outliers are listed below:

Mol	Chain	Res	Type
1	A	993	HIS
1	A	994	THR
1	A	95	TRP
1	A	204	ASP

5.3.2 Protein sidechains ⓘ

In the following table, the Percentiles column shows the percent sidechain outliers of the chain as a percentile score with respect to all X-ray entries followed by that with respect to entries of similar resolution.

The Analysed column shows the number of residues for which the sidechain conformation was analysed, and the total number of residues.

Mol	Chain	Analysed	Rotameric	Outliers	Percentiles
1	A	918/929 (99%)	909 (99%)	9 (1%)	80 47

All (9) residues with a non-rotameric sidechain are listed below:

Mol	Chain	Res	Type
1	A	158	LEU
1	A	275	CYS
1	A	394	GLN
1	A	653	ARG
1	A	654	LYS
1	A	828	TYR
1	A	991	GLU
1	A	992	GLU
1	A	1044	SER

Some sidechains can be flipped to improve hydrogen bonding and reduce clashes. All (1) such sidechains are listed below:

Mol	Chain	Res	Type
1	A	369	HIS

5.3.3 RNA ⓘ

There are no RNA molecules in this entry.

5.4 Non-standard residues in protein, DNA, RNA chains [i](#)

There are no non-standard protein/DNA/RNA residues in this entry.

5.5 Carbohydrates [i](#)

There are no carbohydrates in this entry.

5.6 Ligand geometry [i](#)

Of 4 ligands modelled in this entry, 1 is monoatomic - leaving 3 for Mogul analysis.

In the following table, the Counts columns list the number of bonds (or angles) for which Mogul statistics could be retrieved, the number of bonds (or angles) that are observed in the model and the number of bonds (or angles) that are defined in the chemical component dictionary. The Link column lists molecule types, if any, to which the group is linked. The Z score for a bond length (or angle) is the number of standard deviations the observed value is removed from the expected value. A bond length (or angle) with $|Z| > 2$ is considered an outlier worth inspection. RMSZ is the root-mean-square of all Z scores of the bond lengths (or angles).

Mol	Type	Chain	Res	Link	Bond lengths			Bond angles		
					Counts	RMSZ	$\# Z > 2$	Counts	RMSZ	$\# Z > 2$
2	NAG	A	1046	1	14,14,15	0.62	0	15,19,21	0.97	0
4	SSO	A	1201	3	11,20,20	1.68	3 (27%)	13,29,29	3.08	5 (38%)
5	MRD	A	1301	-	7,7,7	0.43	0	9,10,10	0.73	0

In the following table, the Chirals column lists the number of chiral outliers, the number of chiral centers analysed, the number of these observed in the model and the number defined in the chemical component dictionary. Similar counts are reported in the Torsion and Rings columns. '-' means no outliers of that kind were identified.

Mol	Type	Chain	Res	Link	Chirals	Torsions	Rings
2	NAG	A	1046	1	-	1/6/23/26	0/1/1/1
4	SSO	A	1201	3	1/1/7/7	0/13/33/33	0/1/1/1
5	MRD	A	1301	-	-	0/5/5/5	0/0/0/0

All (3) bond length outliers are listed below:

Mol	Chain	Res	Type	Atoms	Z	Observed(Å)	Ideal(Å)
4	A	1201	SSO	O8-C8	2.53	1.48	1.43
4	A	1201	SSO	C8-C9	2.77	1.58	1.52
4	A	1201	SSO	C2-C1	3.47	1.59	1.53

All (5) bond angle outliers are listed below:

Mol	Chain	Res	Type	Atoms	Z	Observed(°)	Ideal(°)
4	A	1201	SSO	O10-C10-C9	-3.93	98.12	111.34
4	A	1201	SSO	O2-C2-C1	-3.18	105.22	111.28
4	A	1201	SSO	C10-C9-C8	3.91	121.56	112.76
4	A	1201	SSO	C3-C2-C1	4.88	110.74	106.41
4	A	1201	SSO	C9-O9-S9	6.95	127.27	117.85

All (1) chirality outliers are listed below:

Mol	Chain	Res	Type	Atom
4	A	1201	SSO	C9

All (1) torsion outliers are listed below:

Mol	Chain	Res	Type	Atoms
2	A	1046	NAG	O7-C7-N2-C2

There are no ring outliers.

1 monomer is involved in 2 short contacts:

Mol	Chain	Res	Type	Clashes	Symm-Clashes
2	A	1046	NAG	2	0

5.7 Other polymers [i](#)

There are no such residues in this entry.

5.8 Polymer linkage issues [i](#)

There are no chain breaks in this entry.

6 Fit of model and data

6.1 Protein, DNA and RNA chains

In the following table, the column labelled ‘#RSRZ > 2’ contains the number (and percentage) of RSRZ outliers, followed by percent RSRZ outliers for the chain as percentile scores relative to all X-ray entries and entries of similar resolution. The OWAB column contains the minimum, median, 95th percentile and maximum values of the occupancy-weighted average B-factor per residue. The column labelled ‘Q < 0.9’ lists the number of (and percentage) of residues with an average occupancy less than 0.9.

Mol	Chain	Analysed	<RSRZ>	#RSRZ>2		OWAB(Å ²)	Q<0.9
1	A	1014/1045 (97%)	-0.13	31 (3%)	49 48	5, 11, 22, 57	1 (0%)

All (31) RSRZ outliers are listed below:

Mol	Chain	Res	Type	RSRZ
1	A	702	ASP	5.9
1	A	993	HIS	5.8
1	A	701	GLN	5.8
1	A	78	HIS	5.7
1	A	720	HIS	4.4
1	A	638	ASP	4.0
1	A	538	ASP	4.0
1	A	1008	ARG	4.0
1	A	602	THR	3.9
1	A	603	LEU	3.8
1	A	1024	ASP	3.7
1	A	600	HIS	3.7
1	A	682	ASN	3.7
1	A	534	SER	3.5
1	A	613	THR	3.3
1	A	547	GLU	3.2
1	A	992	GLU	3.0
1	A	721	GLY	3.0
1	A	537	GLU	2.9
1	A	991	GLU	2.8
1	A	1022	HIS	2.5
1	A	536	VAL	2.5
1	A	392	ALA	2.5
1	A	77	ALA	2.4
1	A	290	MET	2.3
1	A	57	ILE	2.3
1	A	784	SER	2.2

Continued on next page...

Continued from previous page...

Mol	Chain	Res	Type	RSRZ
1	A	396	GLU	2.2
1	A	1044	SER	2.1
1	A	497	CYS	2.1
1	A	451	MET	2.1

6.2 Non-standard residues in protein, DNA, RNA chains [i](#)

There are no non-standard protein/DNA/RNA residues in this entry.

6.3 Carbohydrates [i](#)

There are no carbohydrates in this entry.

6.4 Ligands [i](#)

In the following table, the Atoms column lists the number of modelled atoms in the group and the number defined in the chemical component dictionary. LLDF column lists the quality of electron density of the group with respect to its neighbouring residues in protein, DNA or RNA chains. The B-factors column lists the minimum, median, 95th percentile and maximum values of B factors of atoms in the group. The column labelled 'Q< 0.9' lists the number of atoms with occupancy less than 0.9.

Mol	Type	Chain	Res	Atoms	RSCC	RSR	LLDF	B-factors(Å ²)	Q<0.9
4	SSO	A	1201	20/20	0.82	0.20	24.57	10,21,37,38	0
5	MRD	A	1301	8/8	0.92	0.10	2.00	12,13,15,16	0
3	ZN	A	1401	1/1	1.00	0.03	-5.31	7,7,7,7	0
2	NAG	A	1046	14/15	0.71	0.33	-	29,35,38,38	0

6.5 Other polymers [i](#)

There are no such residues in this entry.