



# Full wwPDB X-ray Structure Validation Report ⓘ

Feb 13, 2017 – 04:23 am GMT

PDB ID : 4TQB  
Title : The co-complex structure of the translation initiation factor eIF4E with the inhibitor 4EGI-1 reveals an allosteric mechanism for dissociating eIF4G  
Authors : Papadopoulos, E.; Jenni, S.; Wagner, G.  
Deposited on : 2014-06-10  
Resolution : 1.59 Å(reported)

This is a Full wwPDB X-ray Structure Validation Report for a publicly released PDB entry.

We welcome your comments at [validation@mail.wwpdb.org](mailto:validation@mail.wwpdb.org)

A user guide is available at

<http://wwpdb.org/validation/2016/XrayValidationReportHelp>

with specific help available everywhere you see the ⓘ symbol.

---

The following versions of software and data (see [references ⓘ](#)) were used in the production of this report:

MolProbity : 4.02b-467  
Mogul : 1.7.2 (RC1), CSD as538be (2017)  
Xtriage (Phenix) : 1.9-1692  
EDS : trunk28620  
Percentile statistics : 20161228.v01 (using entries in the PDB archive December 28th 2016)  
Refmac : 5.8.0135  
CCP4 : 6.5.0  
Ideal geometry (proteins) : Engh & Huber (2001)  
Ideal geometry (DNA, RNA) : Parkinson et al. (1996)  
Validation Pipeline (wwPDB-VP) : recalc28949

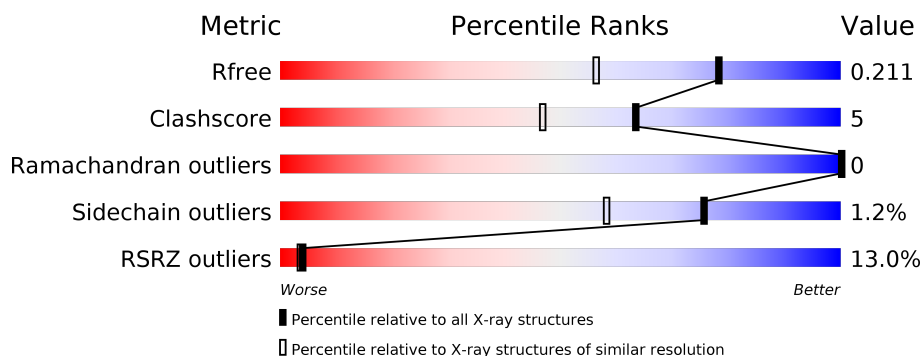
# 1 Overall quality at a glance

The following experimental techniques were used to determine the structure:

## *X-RAY DIFFRACTION*

The reported resolution of this entry is 1.59 Å.

Percentile scores (ranging between 0-100) for global validation metrics of the entry are shown in the following graphic. The table shows the number of entries on which the scores are based.



Metric	Whole archive (#Entries)	Similar resolution (#Entries, resolution range(Å))
$R_{free}$	100719	2696 (1.60-1.60)
Clashscore	112137	2967 (1.60-1.60)
Ramachandran outliers	110173	2887 (1.60-1.60)
Sidechain outliers	110143	2886 (1.60-1.60)
RSRZ outliers	101464	2714 (1.60-1.60)

The table below summarises the geometric issues observed across the polymeric chains and their fit to the electron density. The red, orange, yellow and green segments on the lower bar indicate the fraction of residues that contain outliers for  $\geq 3$ , 2, 1 and 0 types of geometric quality criteria. A grey segment represents the fraction of residues that are not modelled. The numeric value for each fraction is indicated below the corresponding segment, with a dot representing fractions  $\leq 5\%$ . The upper red bar (where present) indicates the fraction of residues that have poor fit to the electron density. The numeric value is given above the bar.

Mol	Chain	Length	Quality of chain
1	A	191	<div> <div>18%</div> <div>87%</div> <div>10%</div> <div>.</div> </div>
1	B	191	<div> <div>7%</div> <div>88%</div> <div>7%</div> <div>.</div> </div>

The following table lists non-polymeric compounds, carbohydrate monomers and non-standard residues in protein, DNA, RNA chains that are outliers for geometric or electron-density-fit criteria:

Mol	Type	Chain	Res	Chirality	Geometry	Clashes	Electron density
4	MES	A	303	-	-	-	X

## 2 Entry composition [i](#)

There are 5 unique types of molecules in this entry. The entry contains 7125 atoms, of which 3235 are hydrogens and 0 are deuteriums.

In the tables below, the ZeroOcc column contains the number of atoms modelled with zero occupancy, the AltConf column contains the number of residues with at least one atom in alternate conformation and the Trace column contains the number of residues modelled with at most 2 atoms.

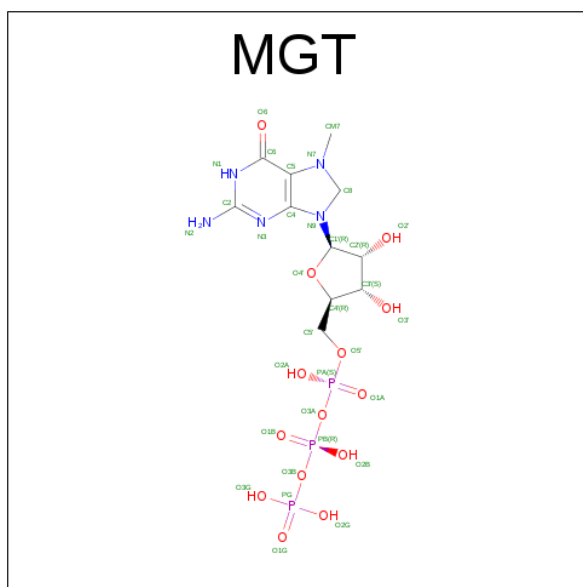
- Molecule 1 is a protein called Eukaryotic translation initiation factor 4E.

Mol	Chain	Residues	Atoms						ZeroOcc	AltConf	Trace
1	A	185	Total	C	H	N	O	S	0	20	0
			3302	1055	1651	288	301	7			
1	B	183	Total	C	H	N	O	S	0	6	0
			3071	982	1532	271	280	6			

There are 2 discrepancies between the modelled and reference sequences:

Chain	Residue	Modelled	Actual	Comment	Reference
A	27	MET	-	initiating methionine	UNP P06730
B	27	MET	-	initiating methionine	UNP P06730

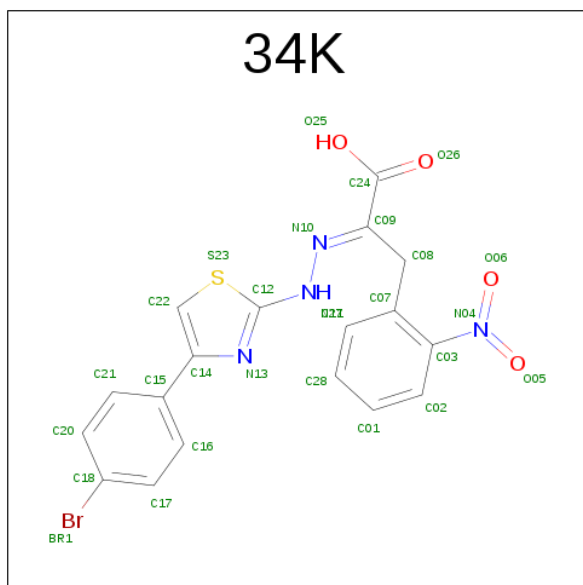
- Molecule 2 is 7N-METHYL-8-HYDROGUANOSINE-5'-TRIPHOSPHATE (three-letter code: MGT) (formula: C<sub>11</sub>H<sub>20</sub>N<sub>5</sub>O<sub>14</sub>P<sub>3</sub>).



Continued from previous page...

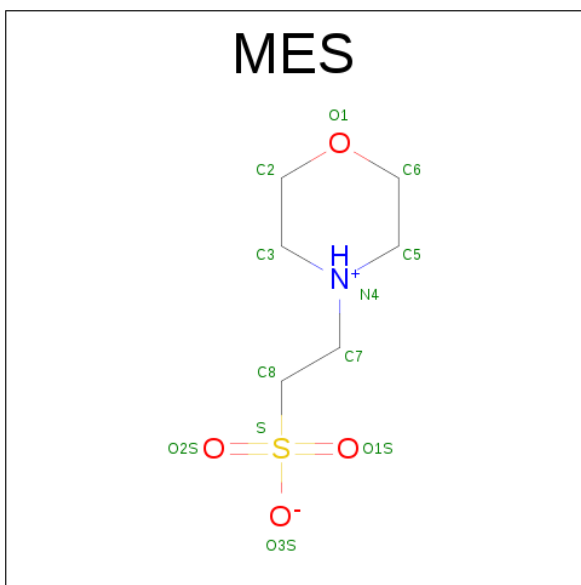
Mol	Chain	Residues	Atoms						ZeroOcc	AltConf
2	B	1	Total	C	H	N	O	P	0	0
			47	11	14	5	14	3		

- Molecule 3 is (2E)-2-{2-[4-(4-bromophenyl)-1,3-thiazol-2-yl]hydrazinyldene}-3-(2-nitrophenyl)propanoic acid (three-letter code: 34K) (formula: C<sub>18</sub>H<sub>13</sub>BrN<sub>4</sub>O<sub>4</sub>S).



Mol	Chain	Residues	Atoms						ZeroOcc	AltConf
3	A	1	Total	Br	C	H	N	O	S	
			40	1	18	12	4	4	1	

- Molecule 4 is 2-(N-MORPHOLINO)-ETHANESULFONIC ACID (three-letter code: MES) (formula: C<sub>6</sub>H<sub>13</sub>NO<sub>4</sub>S).



Mol	Chain	Residues	Atoms						ZeroOcc	AltConf
4	A	1	Total	C	H	N	O	S	0	0
			24	6	12	1	4	1		

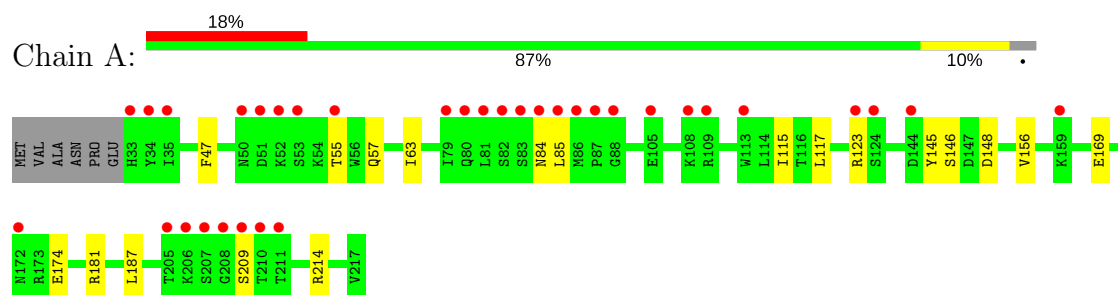
- Molecule 5 is water.

Mol	Chain	Residues	Atoms		ZeroOcc	AltConf
5	A	263	Total	O	0	0
			263	263		
5	B	331	Total	O	0	0
			331	331		

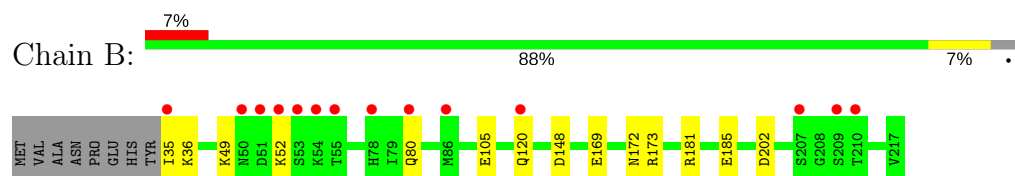
### 3 Residue-property plots [i](#)

These plots are drawn for all protein, RNA and DNA chains in the entry. The first graphic for a chain summarises the proportions of the various outlier classes displayed in the second graphic. The second graphic shows the sequence view annotated by issues in geometry and electron density. Residues are color-coded according to the number of geometric quality criteria for which they contain at least one outlier: green = 0, yellow = 1, orange = 2 and red = 3 or more. A red dot above a residue indicates a poor fit to the electron density ( $RSRZ > 2$ ). Stretches of 2 or more consecutive residues without any outlier are shown as a green connector. Residues present in the sample, but not in the model, are shown in grey.

- Molecule 1: Eukaryotic translation initiation factor 4E



- Molecule 1: Eukaryotic translation initiation factor 4E



## 4 Data and refinement statistics

Property	Value	Source
Space group	P 1 21 1	Depositor
Cell constants a, b, c, $\alpha$ , $\beta$ , $\gamma$	39.83Å 73.48Å 66.26Å 90.00° 106.66° 90.00°	Depositor
Resolution (Å)	19.39 – 1.59 19.39 – 1.59	Depositor EDS
% Data completeness (in resolution range)	94.3 (19.39-1.59) 94.3 (19.39-1.59)	Depositor EDS
$R_{merge}$	(Not available)	Depositor
$R_{sym}$	(Not available)	Depositor
$\langle I/\sigma(I) \rangle$ <sup>1</sup>	2.64 (at 1.59Å)	Xtriage
Refinement program	PHENIX (phenix.refine: 1.9_1692)	Depositor
R, $R_{free}$	0.182 , 0.211 0.182 , 0.211	Depositor DCC
$R_{free}$ test set	2020 reflections (4.36%)	DCC
Wilson B-factor (Å <sup>2</sup> )	17.4	Xtriage
Anisotropy	0.470	Xtriage
Bulk solvent $k_{sol}$ (e/Å <sup>3</sup> ), $B_{sol}$ (Å <sup>2</sup> )	0.34 , 47.9	EDS
L-test for twinning <sup>2</sup>	$\langle  L  \rangle = 0.49$ , $\langle L^2 \rangle = 0.33$	Xtriage
Estimated twinning fraction	0.029 for h,-k,-h-l	Xtriage
$F_o, F_c$ correlation	0.95	EDS
Total number of atoms	7125	wwPDB-VP
Average B, all atoms (Å <sup>2</sup> )	25.0	wwPDB-VP

Xtriage's analysis on translational NCS is as follows: *The largest off-origin peak in the Patterson function is 8.23% of the height of the origin peak. No significant pseudotranslation is detected.*

<sup>1</sup>Intensities estimated from amplitudes.

<sup>2</sup>Theoretical values of  $\langle |L| \rangle$ ,  $\langle L^2 \rangle$  for acentric reflections are 0.5, 0.333 respectively for untwinned datasets, and 0.375, 0.2 for perfectly twinned datasets.



## 5 Model quality

### 5.1 Standard geometry

Bond lengths and bond angles in the following residue types are not validated in this section: MGT, MES, 34K

The Z score for a bond length (or angle) is the number of standard deviations the observed value is removed from the expected value. A bond length (or angle) with  $|Z| > 5$  is considered an outlier worth inspection. RMSZ is the root-mean-square of all Z scores of the bond lengths (or angles).

Mol	Chain	Bond lengths		Bond angles	
		RMSZ	$\# Z  > 5$	RMSZ	$\# Z  > 5$
1	A	0.44	0/1725	0.60	0/2330
1	B	0.50	0/1594	0.63	0/2153
All	All	0.47	0/3319	0.61	0/4483

There are no bond length outliers.

There are no bond angle outliers.

There are no chirality outliers.

There are no planarity outliers.

### 5.2 Too-close contacts

In the following table, the Non-H and H(model) columns list the number of non-hydrogen atoms and hydrogen atoms in the chain respectively. The H(added) column lists the number of hydrogen atoms added and optimized by MolProbity. The Clashes column lists the number of clashes within the asymmetric unit, whereas Symm-Clashes lists symmetry related clashes.

Mol	Chain	Non-H	H(model)	H(added)	Clashes	Symm-Clashes
1	A	1651	1651	1646	12	0
1	B	1539	1532	1531	18	0
2	A	33	14	14	1	0
2	B	33	14	14	1	0
3	A	28	12	12	0	0
4	A	12	12	13	0	0
5	A	263	0	0	7	5
5	B	331	0	0	15	4
All	All	3890	3235	3230	32	6

The all-atom clashscore is defined as the number of clashes found per 1000 atoms (including hydrogen atoms). The all-atom clashscore for this structure is 5.

All (32) close contacts within the same asymmetric unit are listed below, sorted by their clash magnitude.

Atom-1	Atom-2	Interatomic distance (Å)	Clash overlap (Å)
2:A:301:MGT:C4'	2:A:301:MGT:O4'	1.68	1.19
2:B:1000:MGT:O4'	2:B:1000:MGT:C4'	1.67	1.12
1:B:35:ILE:O	5:B:1419:HOH:O	1.68	1.09
1:A:214:ARG:NH2	5:A:657:HOH:O	2.10	0.82
1:A:84[A]:ASN:OD1	5:A:660:HOH:O	2.07	0.73
1:B:80[A]:GLN:OE1	5:B:1330:HOH:O	2.10	0.69
1:B:202:ASP:OD1	5:B:1373:HOH:O	2.10	0.68
1:B:80[B]:GLN:OE1	5:B:1371:HOH:O	2.13	0.66
1:A:123:ARG:O	5:A:578:HOH:O	2.14	0.66
1:B:185:GLU:OE2	5:B:1101:HOH:O	2.15	0.65
1:A:145:TYR:OH	1:A:174:GLU:OE2	2.17	0.62
1:B:173:ARG:NE	5:B:1369:HOH:O	2.29	0.61
1:B:181:ARG:CD	5:B:1412:HOH:O	2.49	0.60
1:B:120:GLN:OE1	5:B:1366:HOH:O	2.17	0.59
1:A:181:ARG:NH1	5:A:402:HOH:O	2.28	0.57
1:B:105:GLU:OE1	5:B:1102:HOH:O	2.18	0.54
1:B:35:ILE:HG23	1:B:36:LYS:H	1.75	0.52
1:B:169[B]:GLU:OE1	1:B:172:ASN:N	2.43	0.51
1:A:115:ILE:CD1	1:A:187[B]:LEU:CD1	2.89	0.51
1:A:47:PHE:HB2	1:A:63:ILE:HD11	1.93	0.50
1:A:169[B]:GLU:HG2	5:A:663:HOH:O	2.11	0.49
1:A:209:SER:O	5:A:607:HOH:O	2.21	0.46
1:B:181:ARG:HG2	5:B:1412:HOH:O	2.16	0.46
1:B:52:LYS:CE	5:B:1431:HOH:O	2.64	0.46
1:B:49:LYS:NZ	5:B:1108:HOH:O	2.50	0.44
1:A:57[A]:GLN:NE2	5:A:409:HOH:O	2.53	0.41
1:B:181:ARG:CG	5:B:1412:HOH:O	2.68	0.41
1:A:85[B]:LEU:HB2	1:A:156:VAL:HG21	2.03	0.41
1:B:52:LYS:HE2	5:B:1431:HOH:O	2.19	0.41
1:A:117:LEU:N	1:A:117:LEU:HD12	2.36	0.41
1:B:35:ILE:HG23	1:B:36:LYS:N	2.36	0.41
1:B:120:GLN:HG2	5:B:1353:HOH:O	2.21	0.41

All (6) symmetry-related close contacts are listed below. The label for Atom-2 includes the symmetry operator and encoded unit-cell translations to be applied.

Atom-1	Atom-2	Interatomic distance (Å)	Clash overlap (Å)
5:A:445:HOH:O	5:A:485:HOH:O[2_655]	2.03	0.17
5:A:621:HOH:O	5:B:1208:HOH:O[2_655]	2.07	0.13

*Continued on next page...*

Continued from previous page...

Atom-1	Atom-2	Interatomic distance (Å)	Clash overlap (Å)
5:A:473:HOH:O	5:B:1182:HOH:O[1_454]	2.09	0.11
5:A:479:HOH:O	5:A:620:HOH:O[1_655]	2.17	0.03
5:B:1172:HOH:O	5:B:1178:HOH:O[1_655]	2.18	0.02
5:A:473:HOH:O	5:B:1171:HOH:O[1_454]	2.18	0.02

## 5.3 Torsion angles [i](#)

### 5.3.1 Protein backbone [i](#)

In the following table, the Percentiles column shows the percent Ramachandran outliers of the chain as a percentile score with respect to all X-ray entries followed by that with respect to entries of similar resolution.

The Analysed column shows the number of residues for which the backbone conformation was analysed, and the total number of residues.

Mol	Chain	Analysed	Favoured	Allowed	Outliers	Percentiles	
1	A	203/191 (106%)	195 (96%)	8 (4%)	0	100	100
1	B	187/191 (98%)	184 (98%)	3 (2%)	0	100	100
All	All	390/382 (102%)	379 (97%)	11 (3%)	0	100	100

There are no Ramachandran outliers to report.

### 5.3.2 Protein sidechains [i](#)

In the following table, the Percentiles column shows the percent sidechain outliers of the chain as a percentile score with respect to all X-ray entries followed by that with respect to entries of similar resolution.

The Analysed column shows the number of residues for which the sidechain conformation was analysed, and the total number of residues.

Mol	Chain	Analysed	Rotameric	Outliers	Percentiles	
1	A	184/170 (108%)	181 (98%)	3 (2%)	68	45
1	B	169/170 (99%)	168 (99%)	1 (1%)	89	80
All	All	353/340 (104%)	349 (99%)	4 (1%)	75	61

All (4) residues with a non-rotameric sidechain are listed below:

Mol	Chain	Res	Type
1	A	55	THR
1	A	146	SER
1	A	148	ASP
1	B	148	ASP

Some sidechains can be flipped to improve hydrogen bonding and reduce clashes. There are no such sidechains identified.

### 5.3.3 RNA [i](#)

There are no RNA molecules in this entry.

## 5.4 Non-standard residues in protein, DNA, RNA chains [i](#)

There are no non-standard protein/DNA/RNA residues in this entry.

## 5.5 Carbohydrates [i](#)

There are no carbohydrates in this entry.

## 5.6 Ligand geometry [i](#)

4 ligands are modelled in this entry.

In the following table, the Counts columns list the number of bonds (or angles) for which Mogul statistics could be retrieved, the number of bonds (or angles) that are observed in the model and the number of bonds (or angles) that are defined in the chemical component dictionary. The Link column lists molecule types, if any, to which the group is linked. The Z score for a bond length (or angle) is the number of standard deviations the observed value is removed from the expected value. A bond length (or angle) with  $|Z| > 2$  is considered an outlier worth inspection. RMSZ is the root-mean-square of all Z scores of the bond lengths (or angles).

Mol	Type	Chain	Res	Link	Bond lengths			Bond angles		
					Counts	RMSZ	# Z  > 2	Counts	RMSZ	# Z  > 2
2	MGT	A	301	-	29,35,35	4.30	13 (44%)	30,56,56	1.47	6 (20%)
3	34K	A	302	-	25,30,30	1.34	3 (12%)	28,41,41	2.44	7 (25%)
4	MES	A	303	-	12,12,12	1.37	2 (16%)	14,16,16	2.90	3 (21%)
2	MGT	B	1000	-	29,35,35	4.23	13 (44%)	30,56,56	1.34	5 (16%)

In the following table, the Chirals column lists the number of chiral outliers, the number of chiral

centers analysed, the number of these observed in the model and the number defined in the chemical component dictionary. Similar counts are reported in the Torsion and Rings columns. '-' means no outliers of that kind were identified.

Mol	Type	Chain	Res	Link	Chirals	Torsions	Rings
2	MGT	A	301	-	-	0/22/50/50	0/3/3/3
3	34K	A	302	-	-	0/15/21/21	0/3/3/3
4	MES	A	303	-	-	0/6/14/14	0/1/1/1
2	MGT	B	1000	-	-	0/22/50/50	0/3/3/3

All (31) bond length outliers are listed below:

Mol	Chain	Res	Type	Atoms	Z	Observed(Å)	Ideal(Å)
2	A	301	MGT	C3'-C4'	-10.36	1.25	1.53
2	B	1000	MGT	C3'-C4'	-10.26	1.26	1.53
2	A	301	MGT	C8-N9	-7.73	1.34	1.45
2	B	1000	MGT	C8-N9	-7.21	1.35	1.45
2	B	1000	MGT	O4'-C1'	-5.15	1.29	1.42
2	A	301	MGT	O4'-C1'	-5.10	1.29	1.42
3	A	302	34K	C15-C14	-4.35	1.42	1.48
2	A	301	MGT	O2'-C2'	-4.26	1.33	1.43
2	B	1000	MGT	O2'-C2'	-3.76	1.34	1.43
2	A	301	MGT	C8-N7	-2.33	1.33	1.43
2	B	1000	MGT	C8-N7	-2.21	1.33	1.43
4	A	303	MES	O2S-S	2.07	1.51	1.45
3	A	302	34K	C24-C09	2.28	1.55	1.52
4	A	303	MES	C8-S	2.47	1.81	1.77
3	A	302	34K	C09-N10	2.92	1.32	1.29
2	B	1000	MGT	O3'-C3'	3.46	1.50	1.43
2	B	1000	MGT	C2-N2	3.47	1.41	1.34
2	A	301	MGT	O3'-C3'	3.63	1.51	1.43
2	A	301	MGT	C6-N1	4.27	1.40	1.33
2	B	1000	MGT	C2-N1	4.36	1.43	1.35
2	B	1000	MGT	C6-N1	4.45	1.41	1.33
2	A	301	MGT	C2-N1	4.53	1.43	1.35
2	A	301	MGT	C2-N2	4.54	1.43	1.34
2	B	1000	MGT	C2-N3	4.83	1.44	1.35
2	A	301	MGT	C2-N3	5.01	1.44	1.35
2	A	301	MGT	C6-C5	7.30	1.49	1.41
2	A	301	MGT	C4-N3	7.36	1.43	1.34
2	B	1000	MGT	C6-C5	7.60	1.50	1.41
2	B	1000	MGT	C4-N3	7.89	1.44	1.34
2	B	1000	MGT	O4'-C4'	10.02	1.67	1.45
2	A	301	MGT	O4'-C4'	10.40	1.68	1.45

All (21) bond angle outliers are listed below:

Mol	Chain	Res	Type	Atoms	Z	Observed(°)	Ideal(°)
3	A	302	34K	C02-C03-C07	-5.93	118.92	122.89
3	A	302	34K	C22-C14-C15	-5.56	121.71	129.44
3	A	302	34K	C14-C22-S23	-4.61	106.12	111.79
4	A	303	MES	O3S-S-O1S	-4.41	101.26	111.37
2	B	1000	MGT	C5-C6-N1	-3.81	117.39	123.37
3	A	302	34K	C08-C07-C03	-3.55	121.62	125.39
2	A	301	MGT	N1-C2-N3	-3.22	120.23	125.45
2	A	301	MGT	C5-C4-N3	-2.96	121.53	126.47
2	A	301	MGT	C5-C6-N1	-2.67	119.18	123.37
2	B	1000	MGT	C5-C4-N3	-2.22	122.77	126.47
2	B	1000	MGT	N1-C2-N3	-2.13	121.99	125.45
3	A	302	34K	O05-N04-O06	-2.10	118.21	123.37
2	B	1000	MGT	C5-C4-N9	2.02	109.25	106.31
2	A	301	MGT	N3-C4-N9	2.41	130.06	126.98
2	A	301	MGT	N2-C2-N1	2.98	122.00	117.24
2	A	301	MGT	C6-N1-C2	3.20	120.66	116.06
2	B	1000	MGT	C6-N1-C2	3.58	121.21	116.06
4	A	303	MES	O3S-S-C8	3.72	110.64	106.06
3	A	302	34K	C09-N10-N11	3.73	121.71	117.65
3	A	302	34K	C27-C07-C03	5.47	120.24	115.68
4	A	303	MES	O1S-S-C8	8.32	113.94	106.79

There are no chirality outliers.

There are no torsion outliers.

There are no ring outliers.

2 monomers are involved in 2 short contacts:

Mol	Chain	Res	Type	Clashes	Symm-Clashes
2	A	301	MGT	1	0
2	B	1000	MGT	1	0

## 5.7 Other polymers [i](#)

There are no such residues in this entry.

## 5.8 Polymer linkage issues [i](#)

There are no chain breaks in this entry.

## 6 Fit of model and data [i](#)

### 6.1 Protein, DNA and RNA chains [i](#)

In the following table, the column labelled ‘#RSRZ> 2’ contains the number (and percentage) of RSRZ outliers, followed by percent RSRZ outliers for the chain as percentile scores relative to all X-ray entries and entries of similar resolution. The OWAB column contains the minimum, median, 95<sup>th</sup> percentile and maximum values of the occupancy-weighted average B-factor per residue. The column labelled ‘Q< 0.9’ lists the number of (and percentage) of residues with an average occupancy less than 0.9.

Mol	Chain	Analysed	<RSRZ>	#RSRZ>2	OWAB(Å <sup>2</sup> )	Q<0.9
1	A	185/191 (96%)	1.29	34 (18%) <b>1</b> <b>1</b>	8, 20, 44, 70	0
1	B	183/191 (95%)	0.76	14 (7%) <b>14</b> <b>13</b>	7, 16, 45, 74	0
All	All	368/382 (96%)	1.03	48 (13%) <b>4</b> <b>3</b>	7, 19, 45, 74	0

All (48) RSRZ outliers are listed below:

Mol	Chain	Res	Type	RSRZ
1	A	209	SER	10.2
1	B	210	THR	9.5
1	A	208	GLY	8.8
1	A	207	SER	8.8
1	A	33	HIS	8.5
1	A	53	SER	8.3
1	A	85[A]	LEU	7.6
1	A	34	TYR	6.7
1	A	210	THR	6.6
1	A	124	SER	6.1
1	B	35	ILE	5.7
1	A	87[A]	PRO	5.3
1	A	144[A]	ASP	5.2
1	A	206	LYS	5.2
1	B	209	SER	5.2
1	B	207	SER	5.0
1	A	52	LYS	4.6
1	B	53	SER	4.4
1	A	83[A]	SER	4.2
1	A	35	ILE	4.2
1	B	52	LYS	4.1
1	A	86[A]	MET	4.0
1	A	88[A]	GLY	4.0
1	B	120	GLN	3.9

*Continued on next page...*

*Continued from previous page...*

Mol	Chain	Res	Type	RSRZ
1	A	205	THR	3.9
1	A	81[A]	LEU	3.8
1	A	123	ARG	3.6
1	B	50	ASN	3.5
1	A	80[A]	GLN	3.2
1	A	113	TRP	3.2
1	B	54	LYS	3.1
1	B	51	ASP	3.1
1	A	50	ASN	3.0
1	B	55	THR	3.0
1	A	159	LYS	2.8
1	A	84[A]	ASN	2.7
1	A	82[A]	SER	2.7
1	A	109	ARG	2.6
1	A	172	ASN	2.4
1	B	86	MET	2.4
1	B	80[A]	GLN	2.4
1	A	55	THR	2.4
1	A	51	ASP	2.3
1	B	78	HIS	2.3
1	A	108	LYS	2.2
1	A	105[A]	GLU	2.2
1	A	211	THR	2.1
1	A	79[A]	ILE	2.0

## 6.2 Non-standard residues in protein, DNA, RNA chains [i](#)

There are no non-standard protein/DNA/RNA residues in this entry.

## 6.3 Carbohydrates [i](#)

There are no carbohydrates in this entry.

## 6.4 Ligands [i](#)

In the following table, the Atoms column lists the number of modelled atoms in the group and the number defined in the chemical component dictionary. LLDF column lists the quality of electron density of the group with respect to its neighbouring residues in protein, DNA or RNA chains. The B-factors column lists the minimum, median, 95<sup>th</sup> percentile and maximum values of B factors of atoms in the group. The column labelled 'Q < 0.9' lists the number of atoms with occupancy less than 0.9.



Mol	Type	Chain	Res	Atoms	RSCC	RSR	LLDF	B-factors( $\text{\AA}^2$ )	Q<0.9
4	MES	A	303	12/12	0.86	0.21	4.51	23,23,28,28	0
3	34K	A	302	28/28	0.90	0.16	0.13	33,35,43,43	0
2	MGT	B	1000	33/33	0.92	0.12	-0.33	16,24,31,32	0
2	MGT	A	301	33/33	0.86	0.16	-0.36	21,34,43,44	0

## 6.5 Other polymers [i](#)

There are no such residues in this entry.