



wwPDB X-ray Structure Validation Summary Report ⓘ

Nov 2, 2017 – 08:26 AM EDT

PDB ID : 3TUR
Title : Crystal Structure of M. tuberculosis LD-transpeptidase type 2 complexed with a peptidoglycan fragment
Authors : Bianchet, M.A.; Erdemli, S.B.; Gupta, R.; Lamichhane, G.; Amzel, L.M.
Deposited on : unknown
Resolution : 1.72 Å(reported)

This is a wwPDB X-ray Structure Validation Summary Report for a publicly released PDB entry.

We welcome your comments at validation@mail.wwpdb.org

A user guide is available at

<http://wwpdb.org/validation/2016/XrayValidationReportHelp>

with specific help available everywhere you see the ⓘ symbol.

The following versions of software and data (see [references ⓘ](#)) were used in the production of this report:

MolProbity : 4.02b-467
Mogul : 1.7.2 (RC1), CSD as538be (2017)
Xtriage (Phenix) : 1.9-1692
EDS : rb-20030345
Percentile statistics : 20161228.v01 (using entries in the PDB archive December 28th 2016)
Refmac : 5.8.0135
CCP4 : 6.5.0
Ideal geometry (proteins) : Engh & Huber (2001)
Ideal geometry (DNA, RNA) : Parkinson et al. (1996)
Validation Pipeline (wwPDB-VP) : rb-20030345

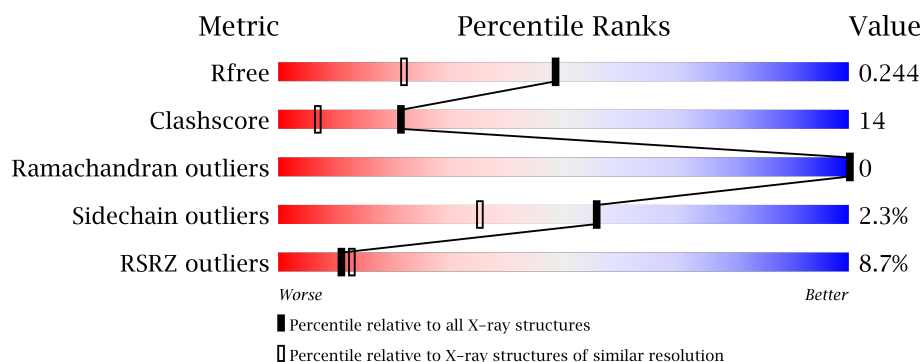
1 Overall quality at a glance

The following experimental techniques were used to determine the structure:

X-RAY DIFFRACTION

The reported resolution of this entry is 1.72 Å.

Percentile scores (ranging between 0-100) for global validation metrics of the entry are shown in the following graphic. The table shows the number of entries on which the scores are based.



Metric	Whole archive (#Entries)	Similar resolution (#Entries, resolution range(Å))
R_{free}	100719	4385 (1.74-1.70)
Clashscore	112137	4841 (1.74-1.70)
Ramachandran outliers	110173	4771 (1.74-1.70)
Sidechain outliers	110143	4771 (1.74-1.70)
RSRZ outliers	101464	4426 (1.74-1.70)

The table below summarises the geometric issues observed across the polymeric chains and their fit to the electron density. The red, orange, yellow and green segments on the lower bar indicate the fraction of residues that contain outliers for ≥ 3 , 2, 1 and 0 types of geometric quality criteria. A grey segment represents the fraction of residues that are not modelled. The numeric value for each fraction is indicated below the corresponding segment, with a dot representing fractions $\leq 5\%$. The upper red bar (where present) indicates the fraction of residues that have poor fit to the electron density. The numeric value is given above the bar.

Mol	Chain	Length	Quality of chain
1	A	287	<div> <div>5%</div> <div> <div></div> <div>73%</div> <div>15%</div> <div>••</div> <div>10%</div> </div> </div>
1	B	287	<div> <div>11%</div> <div> <div></div> <div>78%</div> <div>15%</div> <div>•</div> <div>6%</div> </div> </div>

The following table lists non-polymeric compounds, carbohydrate monomers and non-standard residues in protein, DNA, RNA chains that are outliers for geometric or electron-density-fit criteria:

Mol	Type	Chain	Res	Chirality	Geometry	Clashes	Electron density
2	0JC	B	505	-	-	X	-
3	DGL	A	505[A]	-	-	-	X
3	DGL	A	505[B]	-	-	-	X
4	6CL	A	506[A]	-	-	X	X
4	6CL	A	506[B]	-	-	X	X

2 Entry composition [i](#)

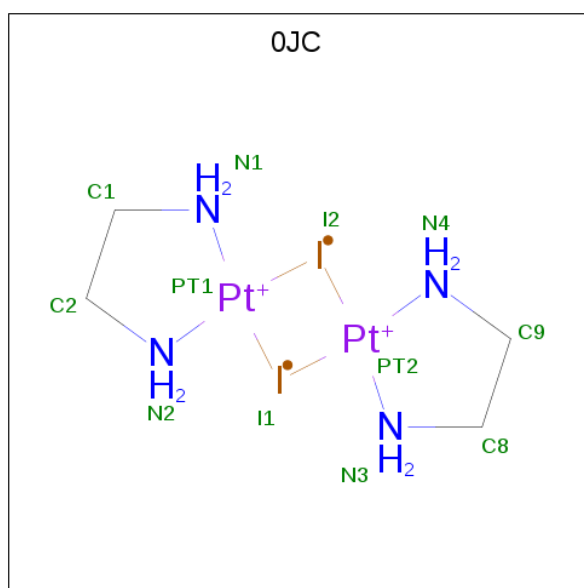
There are 6 unique types of molecules in this entry. The entry contains 4653 atoms, of which 0 are hydrogens and 0 are deuteriums.

In the tables below, the ZeroOcc column contains the number of atoms modelled with zero occupancy, the AltConf column contains the number of residues with at least one atom in alternate conformation and the Trace column contains the number of residues modelled with at most 2 atoms.

- Molecule 1 is a protein called Mycobacteria Tuberculosis LD-transpeptidase type 2.

Mol	Chain	Residues	Atoms					ZeroOcc	AltConf	Trace
1	A	258	Total	C	N	O	S	0	3	0
			2008	1266	349	385	8			
1	B	269	Total	C	N	O	S	0	2	0
			2063	1301	357	398	7			

- Molecule 2 is Di-mu-iodobis(ethylenediamine)diplatinum(II) (three-letter code: 0JC) (formula: $C_4H_{16}I_2N_4Pt_2$).



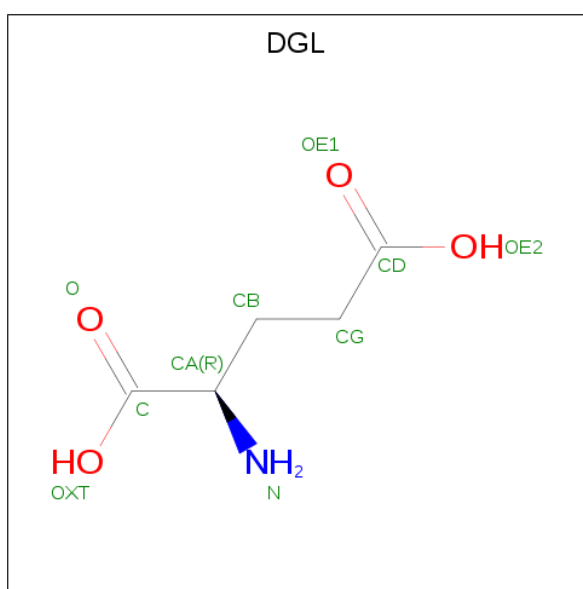
Mol	Chain	Residues	Atoms					ZeroOcc	AltConf
2	A	1	Total	C	I	N	Pt	0	0
			6	2	1	2	1		
2	A	1	Total	C	I	N	Pt	0	1
			12	4	2	4	2		
2	A	1	Total	C	I	N	Pt	0	0
			6	2	1	2	1		
2	A	1	Total	C	I	N	Pt	0	1
			12	4	2	4	2		

Continued on next page...

Continued from previous page...

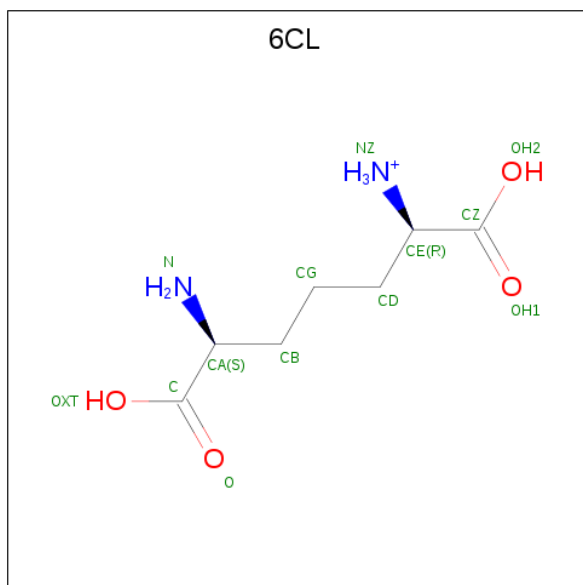
Mol	Chain	Residues	Atoms					ZeroOcc	AltConf
2	B	1	Total	C	I	N	Pt	0	0
			6	2	1	2	1		
2	B	1	Total	C	I	N	Pt	0	0
			6	2	1	2	1		
2	B	1	Total	C	I	N	Pt	0	1
			12	4	2	4	2		
2	B	1	Total	C	I	N	Pt	0	0
			6	2	1	2	1		

- Molecule 3 is D-GLUTAMIC ACID (three-letter code: DGL) (formula: $C_5H_9NO_4$).



Mol	Chain	Residues	Atoms				ZeroOcc	AltConf
3	A	1	Total	C	N	O	0	1
			18	10	2	6		

- Molecule 4 is 6-CARBOXYLYSINE (three-letter code: 6CL) (formula: $C_7H_{15}N_2O_4$).



Mol	Chain	Residues	Atoms				ZeroOcc	AltConf
4	A	1	Total	C	N	O	0	1
			26	14	4	8		

- Molecule 5 is PLATINUM (II) ION (three-letter code: PT) (formula: Pt).

Mol	Chain	Residues	Atoms		ZeroOcc	AltConf
5	B	1	Total	Pt	0	0
			1	1		

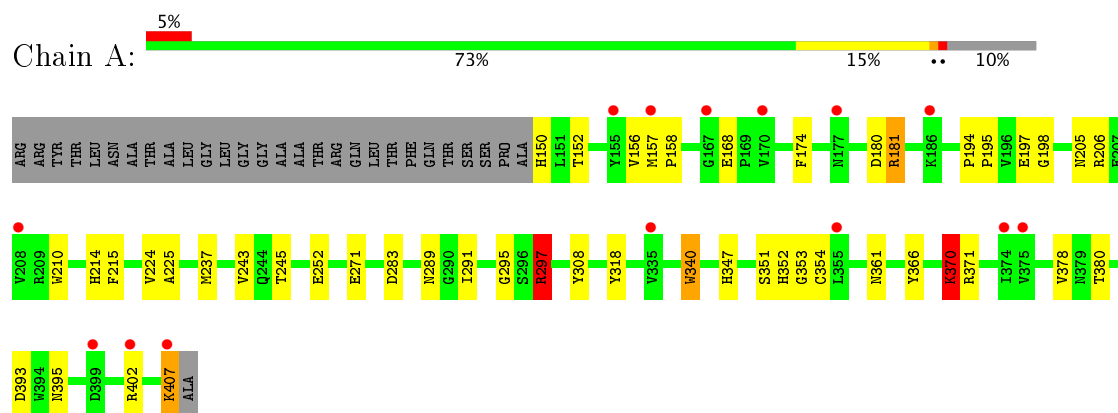
- Molecule 6 is water.

Mol	Chain	Residues	Atoms		ZeroOcc	AltConf
6	A	229	Total	O	0	1
			230	230		
6	B	241	Total	O	0	0
			241	241		

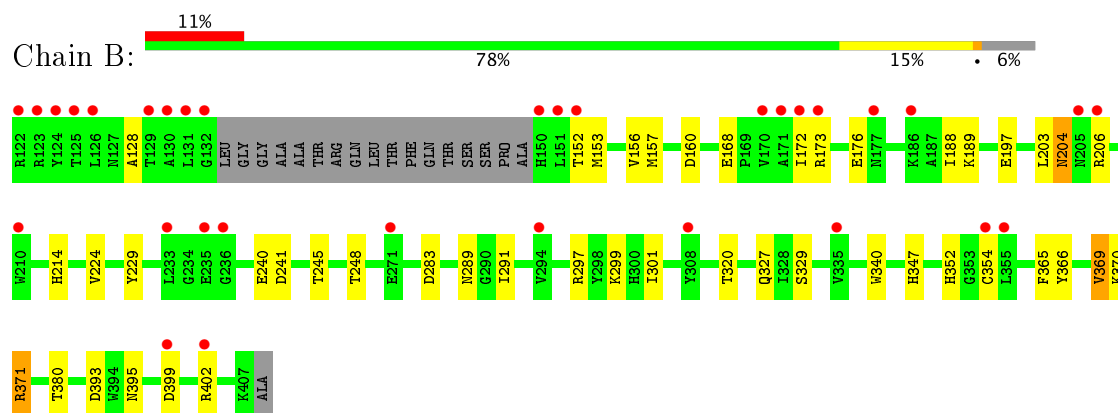
3 Residue-property plots [i](#)

These plots are drawn for all protein, RNA and DNA chains in the entry. The first graphic for a chain summarises the proportions of the various outlier classes displayed in the second graphic. The second graphic shows the sequence view annotated by issues in geometry and electron density. Residues are color-coded according to the number of geometric quality criteria for which they contain at least one outlier: green = 0, yellow = 1, orange = 2 and red = 3 or more. A red dot above a residue indicates a poor fit to the electron density ($RSRZ > 2$). Stretches of 2 or more consecutive residues without any outlier are shown as a green connector. Residues present in the sample, but not in the model, are shown in grey.

- Molecule 1: Mycobacteria Tuberculosis LD-transpeptidase type 2



- Molecule 1: Mycobacteria Tuberculosis LD-transpeptidase type 2



4 Data and refinement statistics

Property	Value	Source
Space group	I 21 21 21	Depositor
Cell constants a, b, c, α , β , γ	119.13Å 120.83Å 122.85Å 90.00° 90.00° 90.00°	Depositor
Resolution (Å)	85.69 – 1.72 25.87 – 1.72	Depositor EDS
% Data completeness (in resolution range)	94.3 (85.69-1.72) 94.4 (25.87-1.72)	Depositor EDS
R_{merge}	(Not available)	Depositor
R_{sym}	0.05	Depositor
$\langle I/\sigma(I) \rangle$ ¹	1.58 (at 1.72Å)	Xtriage
Refinement program	REFMAC	Depositor
R, R_{free}	0.199 , 0.235 0.209 , 0.244	Depositor DCC
R_{free} test set	4474 reflections (5.32%)	DCC
Wilson B-factor (Å ²)	29.2	Xtriage
Anisotropy	0.363	Xtriage
Bulk solvent k_{sol} (e/Å ³), B_{sol} (Å ²)	0.38 , 50.8	EDS
L-test for twinning ²	$\langle L \rangle = 0.51$, $\langle L^2 \rangle = 0.35$	Xtriage
Estimated twinning fraction	0.057 for -h,-l,-k 0.003 for l,-k,h 0.006 for -k,-h,-l 0.000 for k,-l,-h 0.000 for -l,h,-k	Xtriage
F_o, F_c correlation	0.96	EDS
Total number of atoms	4653	wwPDB-VP
Average B, all atoms (Å ²)	38.0	wwPDB-VP

Xtriage's analysis on translational NCS is as follows: *The largest off-origin peak in the Patterson function is 4.15% of the height of the origin peak. No significant pseudotranslation is detected.*

¹Intensities estimated from amplitudes.

²Theoretical values of $\langle |L| \rangle$, $\langle L^2 \rangle$ for acentric reflections are 0.5, 0.333 respectively for untwinned datasets, and 0.375, 0.2 for perfectly twinned datasets.

5 Model quality ⓘ

5.1 Standard geometry ⓘ

Bond lengths and bond angles in the following residue types are not validated in this section: 6CL, 0JC, DGL, PT

The Z score for a bond length (or angle) is the number of standard deviations the observed value is removed from the expected value. A bond length (or angle) with $|Z| > 5$ is considered an outlier worth inspection. RMSZ is the root-mean-square of all Z scores of the bond lengths (or angles).

Mol	Chain	Bond lengths		Bond angles	
		RMSZ	$\# Z > 5$	RMSZ	$\# Z > 5$
1	A	1.41	10/2067 (0.5%)	1.17	7/2827 (0.2%)
1	B	1.43	7/2125 (0.3%)	1.20	10/2905 (0.3%)
All	All	1.42	17/4192 (0.4%)	1.19	17/5732 (0.3%)

The worst 5 of 17 bond length outliers are listed below:

Mol	Chain	Res	Type	Atoms	Z	Observed(Å)	Ideal(Å)
1	A	370	LYS	CE-NZ	9.23	1.72	1.49
1	A	318	TYR	CD2-CE2	7.00	1.49	1.39
1	A	197	GLU	CG-CD	6.38	1.61	1.51
1	B	329	SER	CB-OG	6.01	1.50	1.42
1	B	370	LYS	CD-CE	5.84	1.65	1.51

The worst 5 of 17 bond angle outliers are listed below:

Mol	Chain	Res	Type	Atoms	Z	Observed(°)	Ideal(°)
1	B	371	ARG	NE-CZ-NH1	-15.22	112.69	120.30
1	A	180	ASP	CB-CG-OD1	8.89	126.30	118.30
1	B	203	LEU	CB-CG-CD2	8.52	125.48	111.00
1	B	160	ASP	CB-CG-OD2	-8.47	110.68	118.30
1	A	297[A]	ARG	CG-CD-NE	-7.81	95.40	111.80

There are no chirality outliers.

There are no planarity outliers.

5.2 Too-close contacts ⓘ

In the following table, the Non-H and H(model) columns list the number of non-hydrogen atoms and hydrogen atoms in the chain respectively. The H(added) column lists the number of hydrogen

atoms added and optimized by MolProbity. The Clashes column lists the number of clashes within the asymmetric unit, whereas Symm-Clashes lists symmetry related clashes.

Mol	Chain	Non-H	H(model)	H(added)	Clashes	Symm-Clashes
1	A	2008	0	1910	50	0
1	B	2063	0	1951	55	0
2	A	36	0	24	10	0
2	B	30	0	20	17	0
3	A	18	0	14	3	0
4	A	26	0	24	33	0
5	B	1	0	0	0	0
6	A	230	0	0	2	1
6	B	241	0	0	11	1
All	All	4653	0	3943	110	2

The all-atom clashscore is defined as the number of clashes found per 1000 atoms (including hydrogen atoms). The all-atom clashscore for this structure is 14.

The worst 5 of 110 close contacts within the same asymmetric unit are listed below, sorted by their clash magnitude.

Atom-1	Atom-2	Interatomic distance (Å)	Clash overlap (Å)
1:A:370:LYS:CE	1:A:370:LYS:NZ	1.72	1.53
2:B:504[A]:0JC:I1	6:B:838:HOH:O	2.26	1.22
2:B:502:0JC:H6	6:B:718:HOH:O	1.45	1.14
4:A:506[B]:6CL:HA	1:B:352:HIS:H	1.10	1.12
1:A:157[A]:MET:HG3	1:A:158:PRO:HA	1.32	1.09

All (2) symmetry-related close contacts are listed below. The label for Atom-2 includes the symmetry operator and encoded unit-cell translations to be applied.

Atom-1	Atom-2	Interatomic distance (Å)	Clash overlap (Å)
6:B:781:HOH:O	6:B:781:HOH:O[7_455]	2.14	0.06
6:A:677:HOH:O	6:A:677:HOH:O[8_555]	2.15	0.05

5.3 Torsion angles ⓘ

5.3.1 Protein backbone ⓘ

In the following table, the Percentiles column shows the percent Ramachandran outliers of the chain as a percentile score with respect to all X-ray entries followed by that with respect to entries of similar resolution.

The Analysed column shows the number of residues for which the backbone conformation was analysed, and the total number of residues.

Mol	Chain	Analysed	Favoured	Allowed	Outliers	Percentiles	
1	A	259/287 (90%)	255 (98%)	4 (2%)	0	100	100
1	B	267/287 (93%)	259 (97%)	8 (3%)	0	100	100
All	All	526/574 (92%)	514 (98%)	12 (2%)	0	100	100

There are no Ramachandran outliers to report.

5.3.2 Protein sidechains ⓘ

In the following table, the Percentiles column shows the percent sidechain outliers of the chain as a percentile score with respect to all X-ray entries followed by that with respect to entries of similar resolution.

The Analysed column shows the number of residues for which the sidechain conformation was analysed, and the total number of residues.

Mol	Chain	Analysed	Rotameric	Outliers	Percentiles	
1	A	215/232 (93%)	208 (97%)	7 (3%)	43	20
1	B	218/232 (94%)	214 (98%)	4 (2%)	64	46
All	All	433/464 (93%)	422 (98%)	11 (2%)	56	32

5 of 11 residues with a non-rotameric sidechain are listed below:

Mol	Chain	Res	Type
1	A	370	LYS
1	A	393	ASP
1	B	204	ASN
1	A	297[B]	ARG
1	B	189	LYS

Some sidechains can be flipped to improve hydrogen bonding and reduce clashes. 5 of 12 such sidechains are listed below:

Mol	Chain	Res	Type
1	B	150	HIS
1	B	204	ASN
1	B	361	ASN
1	A	395	ASN
1	B	289	ASN

5.3.3 RNA ⓘ

There are no RNA molecules in this entry.

5.4 Non-standard residues in protein, DNA, RNA chains ⓘ

There are no non-standard protein/DNA/RNA residues in this entry.

5.5 Carbohydrates ⓘ

There are no carbohydrates in this entry.

5.6 Ligand geometry ⓘ

Of 16 ligands modelled in this entry, 1 is monoatomic - leaving 15 for Mogul analysis.

In the following table, the Counts columns list the number of bonds (or angles) for which Mogul statistics could be retrieved, the number of bonds (or angles) that are observed in the model and the number of bonds (or angles) that are defined in the Chemical Component Dictionary. The Link column lists molecule types, if any, to which the group is linked. The Z score for a bond length (or angle) is the number of standard deviations the observed value is removed from the expected value. A bond length (or angle) with $|Z| > 2$ is considered an outlier worth inspection. RMSZ is the root-mean-square of all Z scores of the bond lengths (or angles).

Mol	Type	Chain	Res	Link	Bond lengths			Bond angles		
					Counts	RMSZ	# $ Z > 2$	Counts	RMSZ	# $ Z > 2$
2	0JC	A	501	1	3,6,14	0.61	0	2,7,22	0.45	0
2	0JC	A	502[A]	1	3,6,14	0.63	0	2,7,22	0.70	0
2	0JC	A	502[B]	1	3,6,14	0.26	0	2,7,22	0.42	0
2	0JC	A	503	1	3,6,14	0.50	0	2,7,22	0.26	0
2	0JC	A	504[A]	1	3,6,14	0.47	0	2,7,22	0.53	0
2	0JC	A	504[B]	1	3,6,14	0.46	0	2,7,22	0.64	0
3	DGL	A	505[A]	-	3,8,9	2.45	2 (66%)	2,9,11	2.21	1 (50%)
3	DGL	A	505[B]	-	3,8,9	2.03	1 (33%)	2,9,11	0.87	0
4	6CL	A	506[A]	-	2,12,12	1.13	0	1,15,15	0.21	0
4	6CL	A	506[B]	-	2,12,12	0.32	0	1,15,15	0.43	0
2	0JC	B	502	1	3,6,14	0.42	0	2,7,22	0.51	0
2	0JC	B	503	-	3,6,14	0.57	0	2,7,22	0.54	0
2	0JC	B	504[A]	1	3,6,14	0.44	0	2,7,22	0.58	0
2	0JC	B	504[B]	1	3,6,14	0.42	0	2,7,22	2.47	1 (50%)
2	0JC	B	505	1	3,6,14	0.50	0	2,7,22	0.82	0

In the following table, the Chirals column lists the number of chiral outliers, the number of chiral

centers analysed, the number of these observed in the model and the number defined in the Chemical Component Dictionary. Similar counts are reported in the Torsion and Rings columns. '-' means no outliers of that kind were identified.

Mol	Type	Chain	Res	Link	Chirals	Torsions	Rings
2	0JC	A	501	1	-	0/0/7/30	0/1/1/3
2	0JC	A	502[A]	1	-	0/0/7/30	0/1/1/3
2	0JC	A	502[B]	1	-	0/0/7/30	0/1/1/3
2	0JC	A	503	1	-	0/0/7/30	0/1/1/3
2	0JC	A	504[A]	1	-	0/0/7/30	0/1/1/3
2	0JC	A	504[B]	1	-	0/0/7/30	0/1/1/3
3	DGL	A	505[A]	-	-	0/4/8/9	0/0/0/0
3	DGL	A	505[B]	-	-	0/4/8/9	0/0/0/0
4	6CL	A	506[A]	-	-	0/6/14/14	0/0/0/0
4	6CL	A	506[B]	-	-	0/6/14/14	0/0/0/0
2	0JC	B	502	1	-	0/0/7/30	0/1/1/3
2	0JC	B	503	-	-	0/0/7/30	0/1/1/3
2	0JC	B	504[A]	1	-	0/0/7/30	0/1/1/3
2	0JC	B	504[B]	1	-	0/0/7/30	0/1/1/3
2	0JC	B	505	1	-	0/0/7/30	0/1/1/3

All (3) bond length outliers are listed below:

Mol	Chain	Res	Type	Atoms	Z	Observed(Å)	Ideal(Å)
3	A	505[A]	DGL	OE2-CD	-3.30	1.24	1.42
3	A	505[B]	DGL	OE2-CD	-3.26	1.24	1.42
3	A	505[A]	DGL	CG-CB	2.56	1.63	1.52

All (2) bond angle outliers are listed below:

Mol	Chain	Res	Type	Atoms	Z	Observed(°)	Ideal(°)
2	B	504[B]	0JC	C2-C1-N1	-3.48	93.16	107.85
3	A	505[A]	DGL	CB-CG-CD	-2.41	104.86	113.04

There are no chirality outliers.

There are no torsion outliers.

There are no ring outliers.

13 monomers are involved in 61 short contacts:

Mol	Chain	Res	Type	Clashes	Symm-Clashes
2	A	501	0JC	4	0
2	A	502[B]	0JC	1	0
2	A	503	0JC	4	0

Continued on next page...

Continued from previous page...

Mol	Chain	Res	Type	Clashes	Symm-Clashes
2	A	504[B]	0JC	1	0
3	A	505[A]	DGL	1	0
3	A	505[B]	DGL	2	0
4	A	506[A]	6CL	15	0
4	A	506[B]	6CL	18	0
2	B	502	0JC	2	0
2	B	503	0JC	1	0
2	B	504[A]	0JC	2	0
2	B	504[B]	0JC	4	0
2	B	505	0JC	8	0

5.7 Other polymers [i](#)

There are no such residues in this entry.

5.8 Polymer linkage issues [i](#)

There are no chain breaks in this entry.

6 Fit of model and data [i](#)

6.1 Protein, DNA and RNA chains [i](#)

In the following table, the column labelled ‘#RSRZ> 2’ contains the number (and percentage) of RSRZ outliers, followed by percent RSRZ outliers for the chain as percentile scores relative to all X-ray entries and entries of similar resolution. The OWAB column contains the minimum, median, 95th percentile and maximum values of the occupancy-weighted average B-factor per residue. The column labelled ‘Q< 0.9’ lists the number of (and percentage) of residues with an average occupancy less than 0.9.

Mol	Chain	Analysed	<RSRZ>	#RSRZ>2	OWAB(Å ²)	Q<0.9
1	A	258/287 (89%)	0.33	14 (5%) 26 30	25, 33, 53, 61	0
1	B	269/287 (93%)	0.59	32 (11%) 5 6	25, 34, 56, 76	1 (0%)
All	All	527/574 (91%)	0.47	46 (8%) 11 13	25, 33, 55, 76	1 (0%)

The worst 5 of 46 RSRZ outliers are listed below:

Mol	Chain	Res	Type	RSRZ
1	B	122	ARG	8.3
1	B	124	TYR	8.2
1	B	131	LEU	6.8
1	B	123	ARG	6.2
1	B	150	HIS	6.2

6.2 Non-standard residues in protein, DNA, RNA chains [i](#)

There are no non-standard protein/DNA/RNA residues in this entry.

6.3 Carbohydrates [i](#)

There are no carbohydrates in this entry.

6.4 Ligands [i](#)

In the following table, the Atoms column lists the number of modelled atoms in the group and the number defined in the chemical component dictionary. LLDF column lists the quality of electron density of the group with respect to its neighbouring residues in protein, DNA or RNA chains. The B-factors column lists the minimum, median, 95th percentile and maximum values of B factors of atoms in the group. The column labelled ‘Q< 0.9’ lists the number of atoms with occupancy less than 0.9.

Mol	Type	Chain	Res	Atoms	RSCC	RSR	LLDF	B-factors(\AA^2)	Q<0.9
3	DGL	A	505[A]	9/10	0.69	0.67	30.89	46,55,57,57	9
4	6CL	A	506[A]	13/13	0.65	0.66	28.71	31,40,43,45	13
3	DGL	A	505[B]	9/10	0.69	0.67	27.37	48,62,64,65	9
4	6CL	A	506[B]	13/13	0.65	0.66	16.63	38,43,49,50	13
2	0JC	A	502[B]	6/12	0.91	0.23	1.72	54,57,61,88	6
2	0JC	A	502[A]	6/12	0.91	0.23	1.43	101,102,109,115	6
2	0JC	B	504[B]	6/12	0.95	0.20	1.28	14,45,67,83	6
2	0JC	B	504[A]	6/12	0.95	0.20	0.64	13,34,41,45	6
5	PT	B	501	1/1	0.97	0.08	-	82,82,82,82	1
2	0JC	A	501	6/12	0.65	0.33	-	49,52,56,59	6
2	0JC	B	505	6/12	0.89	0.27	-	67,75,76,84	6
2	0JC	A	503	6/12	0.96	0.12	-	69,70,72,78	6
2	0JC	A	504[A]	6/12	0.76	0.49	-	95,97,109,110	6
2	0JC	B	503	6/12	0.81	0.31	-	138,138,139,146	5
2	0JC	A	504[B]	6/12	0.76	0.49	-	101,103,112,114	6
2	0JC	B	502	6/12	0.98	0.22	-	61,66,68,85	6

6.5 Other polymers [i](#)

There are no such residues in this entry.