



Full wwPDB X-ray Structure Validation Report ⓘ

Nov 14, 2017 – 05:29 PM EST

PDB ID : 4TU7
Title : Structure of U2AF65 D231V variant with BrU5 DNA
Authors : Agrawal, A.A.; Jenkins, J.L.; Kielkopf, C.L.
Deposited on : unknown
Resolution : 2.09 Å(reported)

This is a Full wwPDB X-ray Structure Validation Report for a publicly released PDB entry.

We welcome your comments at validation@mail.wwpdb.org

A user guide is available at

<http://wwpdb.org/validation/2016/XrayValidationReportHelp>

with specific help available everywhere you see the ⓘ symbol.

The following versions of software and data (see [references ⓘ](#)) were used in the production of this report:

MolProbity : 4.02b-467
Mogul : 1.7.2 (RC1), CSD as538be (2017)
Xtriage (Phenix) : 1.9-1692
EDS : rb-20030345
Percentile statistics : 20161228.v01 (using entries in the PDB archive December 28th 2016)
Refmac : 5.8.0135
CCP4 : 6.5.0
Ideal geometry (proteins) : Engh & Huber (2001)
Ideal geometry (DNA, RNA) : Parkinson et al. (1996)
Validation Pipeline (wwPDB-VP) : rb-20030345

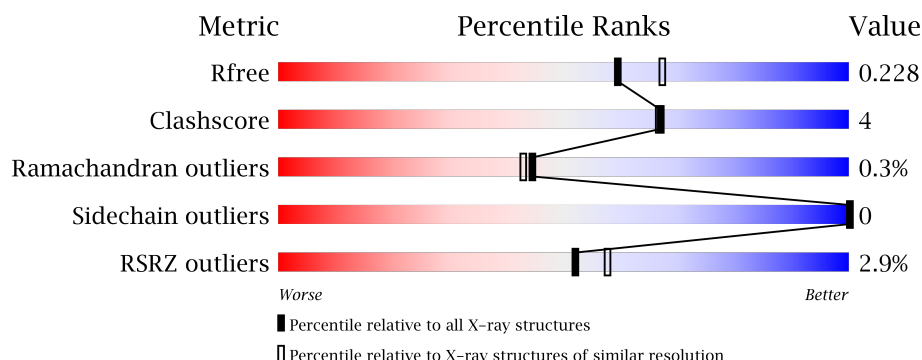
1 Overall quality at a glance

The following experimental techniques were used to determine the structure:

X-RAY DIFFRACTION

The reported resolution of this entry is 2.09 Å.

Percentile scores (ranging between 0-100) for global validation metrics of the entry are shown in the following graphic. The table shows the number of entries on which the scores are based.



Metric	Whole archive (#Entries)	Similar resolution (#Entries, resolution range(Å))
R_{free}	100719	4955 (2.10-2.06)
Clashscore	112137	5537 (2.10-2.06)
Ramachandran outliers	110173	5483 (2.10-2.06)
Sidechain outliers	110143	5484 (2.10-2.06)
RSRZ outliers	101464	4991 (2.10-2.06)

The table below summarises the geometric issues observed across the polymeric chains and their fit to the electron density. The red, orange, yellow and green segments on the lower bar indicate the fraction of residues that contain outliers for ≥ 3 , 2, 1 and 0 types of geometric quality criteria. A grey segment represents the fraction of residues that are not modelled. The numeric value for each fraction is indicated below the corresponding segment, with a dot representing fractions $\leq 5\%$. The upper red bar (where present) indicates the fraction of residues that have poor fit to the electron density. The numeric value is given above the bar.

Mol	Chain	Length	Quality of chain
1	A	174	<div> <div>2%</div> <div> <div></div> <div>89%</div> <div>11%</div> </div> </div>
1	B	174	<div> <div>3%</div> <div> <div></div> <div>91%</div> <div>9%</div> </div> </div>
2	E	7	<div> <div></div> <div>100%</div> </div>
2	P	7	<div> <div></div> <div> <div>57%</div> <div>43%</div> </div> </div>

The following table lists non-polymeric compounds, carbohydrate monomers and non-standard residues in protein, DNA, RNA chains that are outliers for geometric or electron-density-fit criteria.

ria:

Mol	Type	Chain	Res	Chirality	Geometry	Clashes	Electron density
3	DIO	A	402	-	-	-	X
4	SO4	A	405	-	-	-	X
5	GOL	B	407	-	-	-	X

2 Entry composition

There are 7 unique types of molecules in this entry. The entry contains 3339 atoms, of which 0 are hydrogens and 0 are deuteriums.

In the tables below, the ZeroOcc column contains the number of atoms modelled with zero occupancy, the AltConf column contains the number of residues with at least one atom in alternate conformation and the Trace column contains the number of residues modelled with at most 2 atoms.

- Molecule 1 is a protein called Splicing factor U2AF 65 kDa subunit.

Mol	Chain	Residues	Atoms					ZeroOcc	AltConf	Trace
1	A	174	Total	C	N	O	S	0	3	0
			1362	871	234	251	6			
1	B	174	Total	C	N	O	S	0	0	0
			1342	858	230	248	6			

There are 52 discrepancies between the modelled and reference sequences:

Chain	Residue	Modelled	Actual	Comment	Reference
A	143	GLY	-	expression tag	UNP P26368
A	144	PRO	-	expression tag	UNP P26368
A	145	LEU	-	expression tag	UNP P26368
A	146	GLY	-	expression tag	UNP P26368
A	147	SER	-	expression tag	UNP P26368
A	231	VAL	ASP	engineered mutation	UNP P26368
A	?	-	MET	deletion	UNP P26368
A	?	-	SER	deletion	UNP P26368
A	?	-	GLU	deletion	UNP P26368
A	?	-	ASN	deletion	UNP P26368
A	?	-	PRO	deletion	UNP P26368
A	?	-	SER	deletion	UNP P26368
A	?	-	VAL	deletion	UNP P26368
A	?	-	TYR	deletion	UNP P26368
A	?	-	VAL	deletion	UNP P26368
A	?	-	PRO	deletion	UNP P26368
A	?	-	GLY	deletion	UNP P26368
A	?	-	VAL	deletion	UNP P26368
A	?	-	VAL	deletion	UNP P26368
A	?	-	SER	deletion	UNP P26368
A	?	-	THR	deletion	UNP P26368
A	?	-	VAL	deletion	UNP P26368
A	?	-	VAL	deletion	UNP P26368
A	?	-	PRO	deletion	UNP P26368
A	?	-	ASP	deletion	UNP P26368

Continued on next page...

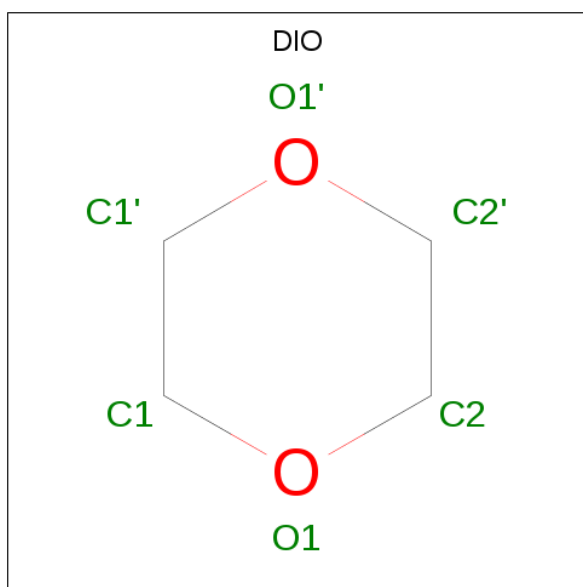
Continued from previous page...

Chain	Residue	Modelled	Actual	Comment	Reference
A	?	-	SER	deletion	UNP P26368
B	143	GLY	-	expression tag	UNP P26368
B	144	PRO	-	expression tag	UNP P26368
B	145	LEU	-	expression tag	UNP P26368
B	146	GLY	-	expression tag	UNP P26368
B	147	SER	-	expression tag	UNP P26368
B	231	VAL	ASP	engineered mutation	UNP P26368
B	?	-	MET	deletion	UNP P26368
B	?	-	SER	deletion	UNP P26368
B	?	-	GLU	deletion	UNP P26368
B	?	-	ASN	deletion	UNP P26368
B	?	-	PRO	deletion	UNP P26368
B	?	-	SER	deletion	UNP P26368
B	?	-	VAL	deletion	UNP P26368
B	?	-	TYR	deletion	UNP P26368
B	?	-	VAL	deletion	UNP P26368
B	?	-	PRO	deletion	UNP P26368
B	?	-	GLY	deletion	UNP P26368
B	?	-	VAL	deletion	UNP P26368
B	?	-	VAL	deletion	UNP P26368
B	?	-	SER	deletion	UNP P26368
B	?	-	THR	deletion	UNP P26368
B	?	-	VAL	deletion	UNP P26368
B	?	-	VAL	deletion	UNP P26368
B	?	-	PRO	deletion	UNP P26368
B	?	-	ASP	deletion	UNP P26368
B	?	-	SER	deletion	UNP P26368

- Molecule 2 is a DNA chain called DNA (5'-D(*UP*UP*UP*UP*(BRU)P*UP*U)-3').

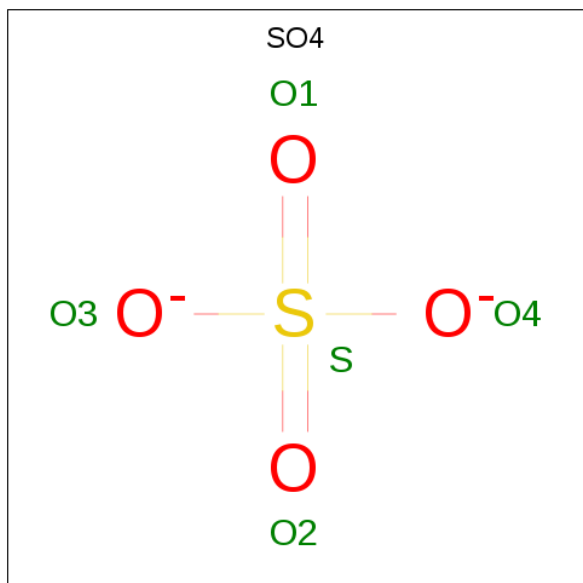
Mol	Chain	Residues	Atoms						ZeroOcc	AltConf	Trace
2	P	7	Total	Br	C	N	O	P	0	1	0
			150	1	72	16	54	7			
2	E	7	Total	Br	C	N	O	P	0	0	0
			131	1	63	14	47	6			

- Molecule 3 is 1,4-DIETHYLENE DIOXIDE (three-letter code: DIO) (formula: C₄H₈O₂).



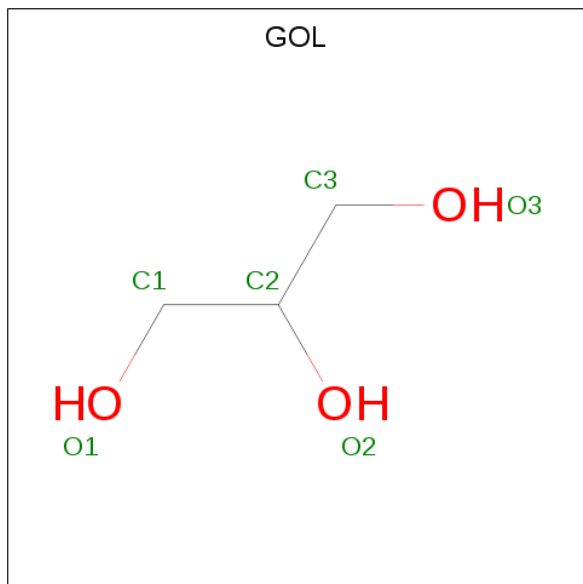
Mol	Chain	Residues	Atoms			ZeroOcc	AltConf
3	A	1	Total	C	O	0	0
			6	4	2		
3	A	1	Total	C	O	0	0
			6	4	2		
3	B	1	Total	C	O	0	0
			6	4	2		
3	B	1	Total	C	O	0	0
			6	4	2		

- Molecule 4 is SULFATE ION (three-letter code: SO4) (formula: O₄S).



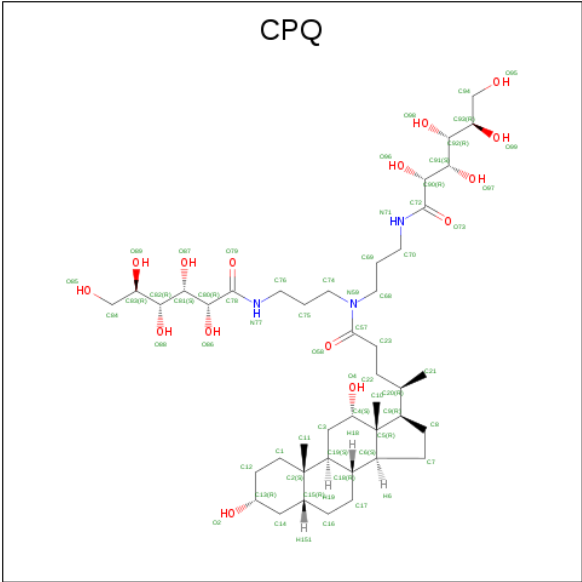
Mol	Chain	Residues	Atoms	ZeroOcc	AltConf
4	A	1	Total O S 5 4 1	0	0
4	A	1	Total O S 5 4 1	0	0
4	A	1	Total O S 5 4 1	0	0
4	B	1	Total O S 5 4 1	0	0
4	B	1	Total O S 5 4 1	0	0
4	B	1	Total O S 5 4 1	0	0

- Molecule 5 is GLYCEROL (three-letter code: GOL) (formula: $C_3H_8O_3$).



Mol	Chain	Residues	Atoms	ZeroOcc	AltConf
5	A	1	Total C O 6 3 3	0	0
5	A	1	Total C O 6 3 3	0	0
5	A	1	Total C O 6 3 3	0	0
5	B	1	Total C O 6 3 3	0	0

- Molecule 6 is N,N-BIS(3-D-GLUCONAMIDOPROPYL)DEOXYCHOLAMIDE (three-letter code: CPQ) (formula: $C_{42}H_{75}N_3O_{15}$).



Mol	Chain	Residues	Atoms		ZeroOcc	AltConf
6	B	1	Total	C O	0	0
			27	24 3		

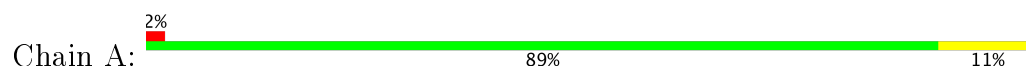
- Molecule 7 is water.

Mol	Chain	Residues	Atoms		ZeroOcc	AltConf
7	A	131	Total	O	0	0
			131	131		
7	B	95	Total	O	0	0
			95	95		
7	P	13	Total	O	0	0
			13	13		
7	E	10	Total	O	0	0
			10	10		

3 Residue-property plots [i](#)

These plots are drawn for all protein, RNA and DNA chains in the entry. The first graphic for a chain summarises the proportions of the various outlier classes displayed in the second graphic. The second graphic shows the sequence view annotated by issues in geometry and electron density. Residues are color-coded according to the number of geometric quality criteria for which they contain at least one outlier: green = 0, yellow = 1, orange = 2 and red = 3 or more. A red dot above a residue indicates a poor fit to the electron density ($RSRZ > 2$). Stretches of 2 or more consecutive residues without any outlier are shown as a green connector. Residues present in the sample, but not in the model, are shown in grey.

- Molecule 1: Splicing factor U2AF 65 kDa subunit



- Molecule 1: Splicing factor U2AF 65 kDa subunit



- Molecule 2: DNA (5'-D(*UP*UP*UP*UP*(BRU)P*UP*U)-3')



- Molecule 2: DNA (5'-D(*UP*UP*UP*UP*(BRU)P*UP*U)-3')



There are no outlier residues recorded for this chain.

4 Data and refinement statistics

Property	Value	Source
Space group	C 1 2 1	Depositor
Cell constants a, b, c, α , β , γ	164.43 Å 37.36 Å 100.19 Å 90.00° 125.60° 90.00°	Depositor
Resolution (Å)	35.98 – 2.09 35.98 – 2.09	Depositor EDS
% Data completeness (in resolution range)	92.5 (35.98-2.09) 95.0 (35.98-2.09)	Depositor EDS
R_{merge}	(Not available)	Depositor
R_{sym}	0.04	Depositor
$\langle I/\sigma(I) \rangle$ ¹	1.19 (at 2.08 Å)	Xtriage
Refinement program	PHENIX (phenix.refine: 1.8.4_1496)	Depositor
R, R_{free}	0.174 , 0.223 0.177 , 0.228	Depositor DCC
R_{free} test set	2823 reflections (9.90%)	DCC
Wilson B-factor (Å ²)	34.0	Xtriage
Anisotropy	0.298	Xtriage
Bulk solvent k_{sol} (e/Å ³), B_{sol} (Å ²)	0.35 , 46.7	EDS
L-test for twinning ²	$\langle L \rangle = 0.47$, $\langle L^2 \rangle = 0.30$	Xtriage
Estimated twinning fraction	0.028 for -h-2*k,l	Xtriage
F_o, F_c correlation	0.95	EDS
Total number of atoms	3339	wwPDB-VP
Average B, all atoms (Å ²)	35.0	wwPDB-VP

Xtriage's analysis on translational NCS is as follows: *The largest off-origin peak in the Patterson function is 5.14% of the height of the origin peak. No significant pseudotranslation is detected.*

¹Intensities estimated from amplitudes.

²Theoretical values of $\langle |L| \rangle$, $\langle L^2 \rangle$ for acentric reflections are 0.5, 0.333 respectively for untwinned datasets, and 0.375, 0.2 for perfectly twinned datasets.

5 Model quality [i](#)

5.1 Standard geometry [i](#)

Bond lengths and bond angles in the following residue types are not validated in this section: GOL, BRU, DIO, SO4, CPQ

The Z score for a bond length (or angle) is the number of standard deviations the observed value is removed from the expected value. A bond length (or angle) with $|Z| > 5$ is considered an outlier worth inspection. RMSZ is the root-mean-square of all Z scores of the bond lengths (or angles).

Mol	Chain	Bond lengths		Bond angles	
		RMSZ	$\# Z > 5$	RMSZ	$\# Z > 5$
1	A	0.38	0/1396	0.51	0/1886
1	B	0.37	0/1369	0.55	0/1848
2	E	0.80	0/121	1.07	0/180
2	P	0.85	0/142	1.12	0/212
All	All	0.44	0/3028	0.61	0/4126

There are no bond length outliers.

There are no bond angle outliers.

There are no chirality outliers.

There are no planarity outliers.

5.2 Too-close contacts [i](#)

In the following table, the Non-H and H(model) columns list the number of non-hydrogen atoms and hydrogen atoms in the chain respectively. The H(added) column lists the number of hydrogen atoms added and optimized by MolProbity. The Clashes column lists the number of clashes within the asymmetric unit, whereas Symm-Clashes lists symmetry related clashes.

Mol	Chain	Non-H	H(model)	H(added)	Clashes	Symm-Clashes
1	A	1362	0	1362	16	0
1	B	1342	0	1341	11	0
2	E	131	0	70	0	0
2	P	150	0	80	2	0
3	A	12	0	16	1	0
3	B	12	0	16	1	0
4	A	15	0	0	0	0
4	B	15	0	0	0	0
5	A	18	0	24	2	0

Continued on next page...

Continued from previous page...

Mol	Chain	Non-H	H(model)	H(added)	Clashes	Symm-Clashes
5	B	6	0	8	1	0
6	B	27	0	39	1	0
7	A	131	0	0	2	0
7	B	95	0	0	0	0
7	E	10	0	0	0	0
7	P	13	0	0	0	0
All	All	3339	0	2956	27	0

The all-atom clashscore is defined as the number of clashes found per 1000 atoms (including hydrogen atoms). The all-atom clashscore for this structure is 4.

All (27) close contacts within the same asymmetric unit are listed below, sorted by their clash magnitude.

Atom-1	Atom-2	Interatomic distance (Å)	Clash overlap (Å)
1:A:158:PHE:HD2	1:B:236:PRO:HB2	1.54	0.73
1:A:309:ASP:OD1	1:A:311:ASN:ND2	2.28	0.66
1:A:192:ASN:HA	5:A:406:GOL:H2	1.77	0.66
1:A:158:PHE:CD2	1:B:236:PRO:HB2	2.36	0.60
1:A:179[A]:THR:HG23	1:A:185:PRO:HG3	1.84	0.59
1:B:156:ILE:O	1:B:196:ASN:ND2	2.33	0.57
1:A:143:GLY:HA2	1:A:146:GLY:H	1.69	0.57
1:B:334:ARG:HB2	5:B:407:GOL:H2	1.86	0.57
1:A:334:ARG:NH2	7:A:625:HOH:O	2.39	0.54
1:A:234:PRO:HG3	1:A:310:ILE:HG21	1.89	0.53
1:A:288:PHE:HB3	5:A:408:GOL:H31	1.90	0.52
2:P:3:DU:H4'	2:P:4:DU:H5'	1.90	0.52
1:A:287:ALA:HB3	1:A:306:GLU:HB3	1.92	0.50
1:A:271:ASN:HB3	3:A:401:DIO:H1'2	1.95	0.49
2:P:2[A]:DU:H3'	2:P:2[A]:DU:H6	1.93	0.49
1:B:325:LEU:HG	6:B:403:CPQ:H71	1.96	0.48
1:A:286:LYS:HE3	1:A:306:GLU:CG	2.44	0.47
1:A:328:LYS:NZ	7:A:504:HOH:O	2.47	0.46
1:B:162:GLU:HG2	1:B:191:ILE:HG13	1.97	0.45
1:B:144:PRO:HB3	1:B:286:LYS:CE	2.47	0.44
1:B:174:ARG:NH1	1:B:184:ASN:OD1	2.37	0.43
1:A:235:LEU:HA	1:A:235:LEU:HD23	1.88	0.43
1:B:335:ALA:O	1:B:336:SER:HB2	2.17	0.43
1:A:286:LYS:HE3	1:A:306:GLU:HG3	2.01	0.42
1:A:162:GLU:HG2	1:A:191:ILE:HG13	2.03	0.41
1:B:278:LEU:HD21	1:B:330:LEU:HD11	2.03	0.41
1:B:276:LYS:HD3	3:B:401:DIO:H12	2.02	0.41

There are no symmetry-related clashes.

5.3 Torsion angles [i](#)

5.3.1 Protein backbone [i](#)

In the following table, the Percentiles column shows the percent Ramachandran outliers of the chain as a percentile score with respect to all X-ray entries followed by that with respect to entries of similar resolution.

The Analysed column shows the number of residues for which the backbone conformation was analysed, and the total number of residues.

Mol	Chain	Analysed	Favoured	Allowed	Outliers	Percentiles	
1	A	175/174 (101%)	174 (99%)	1 (1%)	0	100	100
1	B	172/174 (99%)	170 (99%)	1 (1%)	1 (1%)	28	23
All	All	347/348 (100%)	344 (99%)	2 (1%)	1 (0%)	44	43

All (1) Ramachandran outliers are listed below:

Mol	Chain	Res	Type
1	B	144	PRO

5.3.2 Protein sidechains [i](#)

In the following table, the Percentiles column shows the percent sidechain outliers of the chain as a percentile score with respect to all X-ray entries followed by that with respect to entries of similar resolution.

The Analysed column shows the number of residues for which the sidechain conformation was analysed, and the total number of residues.

Mol	Chain	Analysed	Rotameric	Outliers	Percentiles	
1	A	144/141 (102%)	144 (100%)	0	100	100
1	B	141/141 (100%)	141 (100%)	0	100	100
All	All	285/282 (101%)	285 (100%)	0	100	100

There are no protein residues with a non-rotameric sidechain to report.

Some sidechains can be flipped to improve hydrogen bonding and reduce clashes. There are no such sidechains identified.

5.3.3 RNA ⓘ

There are no RNA molecules in this entry.

5.4 Non-standard residues in protein, DNA, RNA chains ⓘ

2 non-standard protein/DNA/RNA residues are modelled in this entry.

In the following table, the Counts columns list the number of bonds (or angles) for which Mogul statistics could be retrieved, the number of bonds (or angles) that are observed in the model and the number of bonds (or angles) that are defined in the Chemical Component Dictionary. The Link column lists molecule types, if any, to which the group is linked. The Z score for a bond length (or angle) is the number of standard deviations the observed value is removed from the expected value. A bond length (or angle) with $|Z| > 2$ is considered an outlier worth inspection. RMSZ is the root-mean-square of all Z scores of the bond lengths (or angles).

Mol	Type	Chain	Res	Link	Bond lengths			Bond angles		
					Counts	RMSZ	# $ Z > 2$	Counts	RMSZ	# $ Z > 2$
2	BRU	E	5	2	13,21,22	2.43	3 (23%)	16,30,33	1.64	2 (12%)
2	BRU	P	5	2	13,21,22	2.61	2 (15%)	16,30,33	1.94	2 (12%)

In the following table, the Chirals column lists the number of chiral outliers, the number of chiral centers analysed, the number of these observed in the model and the number defined in the Chemical Component Dictionary. Similar counts are reported in the Torsion and Rings columns. '-' means no outliers of that kind were identified.

Mol	Type	Chain	Res	Link	Chirals	Torsions	Rings
2	BRU	E	5	2	-	0/3/21/22	0/2/2/2
2	BRU	P	5	2	-	0/3/21/22	0/2/2/2

All (5) bond length outliers are listed below:

Mol	Chain	Res	Type	Atoms	Z	Observed(Å)	Ideal(Å)
2	P	5	BRU	C2-N3	-2.39	1.33	1.38
2	E	5	BRU	O5'-C5'	-2.22	1.41	1.44
2	E	5	BRU	C2-N3	-2.02	1.34	1.38
2	E	5	BRU	C4-C5	8.02	1.48	1.38
2	P	5	BRU	C4-C5	8.84	1.49	1.38

All (4) bond angle outliers are listed below:

Mol	Chain	Res	Type	Atoms	Z	Observed(°)	Ideal(°)
2	P	5	BRU	C5-C4-N3	-2.50	120.65	123.64
2	E	5	BRU	C5-C4-N3	-2.22	120.98	123.64

Continued on next page...

Continued from previous page...

Mol	Chain	Res	Type	Atoms	Z	Observed(°)	Ideal(°)
2	E	5	BRU	C4-N3-C2	5.83	120.26	115.16
2	P	5	BRU	C4-N3-C2	6.82	121.12	115.16

There are no chirality outliers.

There are no torsion outliers.

There are no ring outliers.

No monomer is involved in short contacts.

5.5 Carbohydrates [i](#)

There are no carbohydrates in this entry.

5.6 Ligand geometry [i](#)

15 ligands are modelled in this entry.

In the following table, the Counts columns list the number of bonds (or angles) for which Mogul statistics could be retrieved, the number of bonds (or angles) that are observed in the model and the number of bonds (or angles) that are defined in the Chemical Component Dictionary. The Link column lists molecule types, if any, to which the group is linked. The Z score for a bond length (or angle) is the number of standard deviations the observed value is removed from the expected value. A bond length (or angle) with $|Z| > 2$ is considered an outlier worth inspection. RMSZ is the root-mean-square of all Z scores of the bond lengths (or angles).

Mol	Type	Chain	Res	Link	Bond lengths			Bond angles		
					Counts	RMSZ	$\# Z > 2$	Counts	RMSZ	$\# Z > 2$
3	DIO	A	401	-	6,6,6	0.80	0	6,6,6	0.23	0
3	DIO	A	402	-	6,6,6	0.79	0	6,6,6	0.37	0
4	SO4	A	403	-	4,4,4	0.18	0	6,6,6	0.14	0
4	SO4	A	404	-	4,4,4	0.26	0	6,6,6	0.07	0
4	SO4	A	405	-	4,4,4	0.17	0	6,6,6	0.12	0
5	GOL	A	406	-	5,5,5	0.30	0	5,5,5	0.25	0
5	GOL	A	407	-	5,5,5	0.31	0	5,5,5	0.36	0
5	GOL	A	408	-	5,5,5	0.35	0	5,5,5	0.13	0
3	DIO	B	401	-	6,6,6	0.82	0	6,6,6	0.27	0
3	DIO	B	402	-	6,6,6	0.78	0	6,6,6	0.45	0
6	CPQ	B	403	-	30,30,63	1.72	6 (20%)	47,47,92	5.21	20 (42%)
4	SO4	B	404	-	4,4,4	0.16	0	6,6,6	0.22	0
4	SO4	B	405	-	4,4,4	0.22	0	6,6,6	0.12	0
4	SO4	B	406	-	4,4,4	0.16	0	6,6,6	0.13	0
5	GOL	B	407	-	5,5,5	0.25	0	5,5,5	0.60	0

In the following table, the Chirals column lists the number of chiral outliers, the number of chiral centers analysed, the number of these observed in the model and the number defined in the Chemical Component Dictionary. Similar counts are reported in the Torsion and Rings columns. '-' means no outliers of that kind were identified.

Mol	Type	Chain	Res	Link	Chirals	Torsions	Rings
3	DIO	A	401	-	-	0/0/6/6	0/1/1/1
3	DIO	A	402	-	-	0/0/6/6	0/1/1/1
4	SO4	A	403	-	-	0/0/0/0	0/0/0/0
4	SO4	A	404	-	-	0/0/0/0	0/0/0/0
4	SO4	A	405	-	-	0/0/0/0	0/0/0/0
5	GOL	A	406	-	-	0/4/4/4	0/0/0/0
5	GOL	A	407	-	-	0/4/4/4	0/0/0/0
5	GOL	A	408	-	-	0/4/4/4	0/0/0/0
3	DIO	B	401	-	-	0/0/6/6	0/1/1/1
3	DIO	B	402	-	-	0/0/6/6	0/1/1/1
6	CPQ	B	403	-	-	0/7/70/125	0/4/4/4
4	SO4	B	404	-	-	0/0/0/0	0/0/0/0
4	SO4	B	405	-	-	0/0/0/0	0/0/0/0
4	SO4	B	406	-	-	0/0/0/0	0/0/0/0
5	GOL	B	407	-	-	0/4/4/4	0/0/0/0

All (6) bond length outliers are listed below:

Mol	Chain	Res	Type	Atoms	Z	Observed(Å)	Ideal(Å)
6	B	403	CPQ	C8-C9	-3.49	1.46	1.54
6	B	403	CPQ	O4-C4	-3.30	1.38	1.43
6	B	403	CPQ	C10-C5	-2.50	1.50	1.54
6	B	403	CPQ	C22-C20	2.84	1.62	1.54
6	B	403	CPQ	C21-C20	3.10	1.60	1.53
6	B	403	CPQ	C20-C9	4.02	1.61	1.54

All (20) bond angle outliers are listed below:

Mol	Chain	Res	Type	Atoms	Z	Observed(°)	Ideal(°)
6	B	403	CPQ	C10-C5-C4	-17.60	91.17	109.08
6	B	403	CPQ	C10-C5-C9	-6.90	100.33	111.23
6	B	403	CPQ	C6-C5-C4	-4.19	103.41	107.39
6	B	403	CPQ	C7-C6-C18	-4.07	112.59	119.07
6	B	403	CPQ	C3-C19-C18	-3.43	105.33	110.87
6	B	403	CPQ	O4-C4-C5	-2.85	106.36	111.12
6	B	403	CPQ	C11-C2-C19	-2.51	107.56	111.16
6	B	403	CPQ	C9-C5-C6	-2.49	97.55	100.08
6	B	403	CPQ	C5-C6-C18	-2.12	112.27	114.67

Continued on next page...

Continued from previous page...

Mol	Chain	Res	Type	Atoms	Z	Observed(°)	Ideal(°)
6	B	403	CPQ	C23-C22-C20	-2.03	110.83	114.56
6	B	403	CPQ	C1-C12-C13	2.10	113.10	110.42
6	B	403	CPQ	C21-C20-C9	2.14	116.30	112.95
6	B	403	CPQ	C22-C20-C9	2.17	114.82	110.26
6	B	403	CPQ	C16-C17-C18	2.50	116.35	112.11
6	B	403	CPQ	C11-C2-C15	2.70	114.95	110.30
6	B	403	CPQ	C8-C9-C20	2.85	116.70	112.14
6	B	403	CPQ	C3-C4-C5	3.25	114.59	111.22
6	B	403	CPQ	C8-C9-C5	3.81	107.36	103.57
6	B	403	CPQ	C10-C5-C6	12.44	130.88	111.23
6	B	403	CPQ	C9-C5-C4	24.32	140.03	117.67

There are no chirality outliers.

There are no torsion outliers.

There are no ring outliers.

6 monomers are involved in 6 short contacts:

Mol	Chain	Res	Type	Clashes	Symm-Clashes
3	A	401	DIO	1	0
5	A	406	GOL	1	0
5	A	408	GOL	1	0
3	B	401	DIO	1	0
6	B	403	CPQ	1	0
5	B	407	GOL	1	0

5.7 Other polymers [i](#)

There are no such residues in this entry.

5.8 Polymer linkage issues [i](#)

There are no chain breaks in this entry.

6 Fit of model and data

6.1 Protein, DNA and RNA chains

In the following table, the column labelled ‘#RSRZ> 2’ contains the number (and percentage) of RSRZ outliers, followed by percent RSRZ outliers for the chain as percentile scores relative to all X-ray entries and entries of similar resolution. The OWAB column contains the minimum, median, 95th percentile and maximum values of the occupancy-weighted average B-factor per residue. The column labelled ‘Q< 0.9’ lists the number of (and percentage) of residues with an average occupancy less than 0.9.

Mol	Chain	Analysed	<RSRZ>	#RSRZ>2	OWAB(Å ²)	Q<0.9
1	A	174/174 (100%)	-0.17	4 (2%) 61 65	21, 31, 54, 68	0
1	B	174/174 (100%)	-0.10	6 (3%) 46 51	20, 34, 49, 65	0
2	E	0/7	-	-	-	-
2	P	0/7	-	-	-	-
All	All	348/362 (96%)	-0.14	10 (2%) 52 58	20, 32, 52, 68	0

All (10) RSRZ outliers are listed below:

Mol	Chain	Res	Type	RSRZ
1	A	294	SER	4.5
1	B	336	SER	3.8
1	B	144	PRO	3.2
1	B	143	GLY	3.1
1	A	295	ALA	3.0
1	B	146	GLY	2.7
1	B	295	ALA	2.4
1	B	180	GLN	2.3
1	A	235	LEU	2.2
1	A	327	ASP	2.1

6.2 Non-standard residues in protein, DNA, RNA chains

In the following table, the Atoms column lists the number of modelled atoms in the group and the number defined in the chemical component dictionary. LLDF column lists the quality of electron density of the group with respect to its neighbouring residues in protein, DNA or RNA chains. The B-factors column lists the minimum, median, 95th percentile and maximum values of B factors of atoms in the group. The column labelled ‘Q< 0.9’ lists the number of atoms with occupancy less than 0.9.

Mol	Type	Chain	Res	Atoms	RSCC	RSR	LLDF	B-factors(Å ²)	Q<0.9
2	BRU	P	5	20/21	0.95	0.11	-	20,26,31,99	0

Continued on next page...

Continued from previous page...

Mol	Type	Chain	Res	Atoms	RSCC	RSR	LLDF	B-factors(\AA^2)	Q<0.9
2	BRU	E	5	20/21	0.95	0.12	-	21,25,34,78	0

6.3 Carbohydrates [i](#)

There are no carbohydrates in this entry.

6.4 Ligands [i](#)

In the following table, the Atoms column lists the number of modelled atoms in the group and the number defined in the chemical component dictionary. LLDF column lists the quality of electron density of the group with respect to its neighbouring residues in protein, DNA or RNA chains. The B-factors column lists the minimum, median, 95th percentile and maximum values of B factors of atoms in the group. The column labelled 'Q< 0.9' lists the number of atoms with occupancy less than 0.9.

Mol	Type	Chain	Res	Atoms	RSCC	RSR	LLDF	B-factors(\AA^2)	Q<0.9
4	SO4	A	405	5/5	0.93	0.19	6.02	50,63,80,84	0
3	DIO	A	402	6/6	0.95	0.26	2.98	53,54,56,63	0
5	GOL	B	407	6/6	0.66	0.30	2.09	36,44,47,55	0
6	CPQ	B	403	27/60	0.91	0.15	1.63	30,39,57,62	0
3	DIO	B	402	6/6	0.91	0.10	-	46,52,57,61	0
4	SO4	B	405	5/5	0.85	0.22	-	51,57,78,79	0
3	DIO	B	401	6/6	0.96	0.22	-	47,48,59,61	0
5	GOL	A	408	6/6	0.78	0.38	-	50,54,67,69	0
4	SO4	B	406	5/5	0.94	0.21	-	45,53,70,81	0
4	SO4	A	403	5/5	0.96	0.12	-	40,49,63,64	0
3	DIO	A	401	6/6	0.49	0.47	-	63,71,74,77	0
4	SO4	A	404	5/5	0.94	0.24	-	45,50,60,73	0
4	SO4	B	404	5/5	0.86	0.19	-	52,52,70,73	0
5	GOL	A	406	6/6	0.85	0.15	-	55,58,66,68	0
5	GOL	A	407	6/6	0.81	0.30	-	55,66,72,72	0

6.5 Other polymers [i](#)

There are no such residues in this entry.