



Full wwPDB X-ray Structure Validation Report ⓘ

Sep 5, 2017 – 06:08 AM EDT

PDB ID : 4U14
Title : Structure of the M3 muscarinic acetylcholine receptor bound to the antagonist tiotropium crystallized with disulfide-stabilized T4 lysozyme (dsT4L)
Authors : Thorsen, T.S.; Matt, R.A.; Weis, W.I.; Kobilka, B.K.
Deposited on : unknown
Resolution : 3.57 Å(reported)

This is a Full wwPDB X-ray Structure Validation Report for a publicly released PDB entry.

We welcome your comments at validation@mail.wwpdb.org

A user guide is available at

<http://wwpdb.org/validation/2016/XrayValidationReportHelp>

with specific help available everywhere you see the ⓘ symbol.

The following versions of software and data (see [references ⓘ](#)) were used in the production of this report:

MolProbity : 4.02b-467
Mogul : 1.7.2 (RC1), CSD as538be (2017)
Xtriage (Phenix) : 1.9-1692
EDS : rb-20029824
Percentile statistics : 20161228.v01 (using entries in the PDB archive December 28th 2016)
Refmac : 5.8.0135
CCP4 : 6.5.0
Ideal geometry (proteins) : Engh & Huber (2001)
Ideal geometry (DNA, RNA) : Parkinson et al. (1996)
Validation Pipeline (wwPDB-VP) : rb-20029824

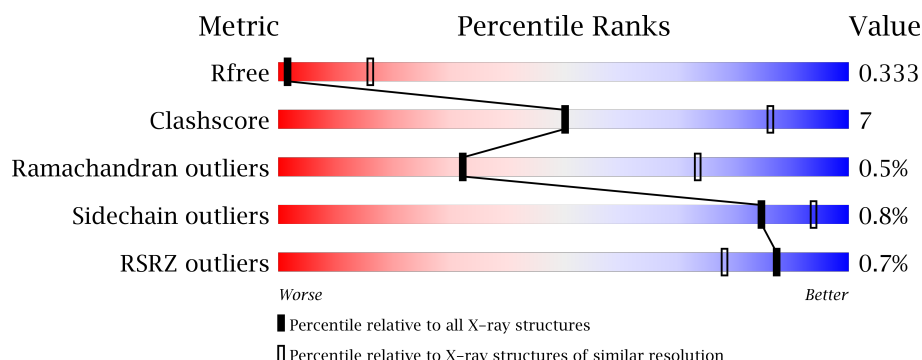
1 Overall quality at a glance

The following experimental techniques were used to determine the structure:

X-RAY DIFFRACTION

The reported resolution of this entry is 3.57 Å.

Percentile scores (ranging between 0-100) for global validation metrics of the entry are shown in the following graphic. The table shows the number of entries on which the scores are based.



Metric	Whole archive (#Entries)	Similar resolution (#Entries, resolution range(Å))
R_{free}	100719	1009 (3.70-3.46)
Clashscore	112137	1128 (3.70-3.46)
Ramachandran outliers	110173	1088 (3.70-3.46)
Sidechain outliers	110143	1088 (3.70-3.46)
RSRZ outliers	101464	1034 (3.70-3.46)

The table below summarises the geometric issues observed across the polymeric chains and their fit to the electron density. The red, orange, yellow and green segments on the lower bar indicate the fraction of residues that contain outliers for ≥ 3 , 2, 1 and 0 types of geometric quality criteria. A grey segment represents the fraction of residues that are not modelled. The numeric value for each fraction is indicated below the corresponding segment, with a dot representing fractions $\leq 5\%$. The upper red bar (where present) indicates the fraction of residues that have poor fit to the electron density. The numeric value is given above the bar.

Mol	Chain	Length	Quality of chain
1	A	460	<div> <div></div> <div>78%</div> <div>17%</div> <div>5%</div> </div>

2 Entry composition

There are 2 unique types of molecules in this entry. The entry contains 3442 atoms, of which 0 are hydrogens and 0 are deuteriums.

In the tables below, the ZeroOcc column contains the number of atoms modelled with zero occupancy, the AltConf column contains the number of residues with at least one atom in alternate conformation and the Trace column contains the number of residues modelled with at most 2 atoms.

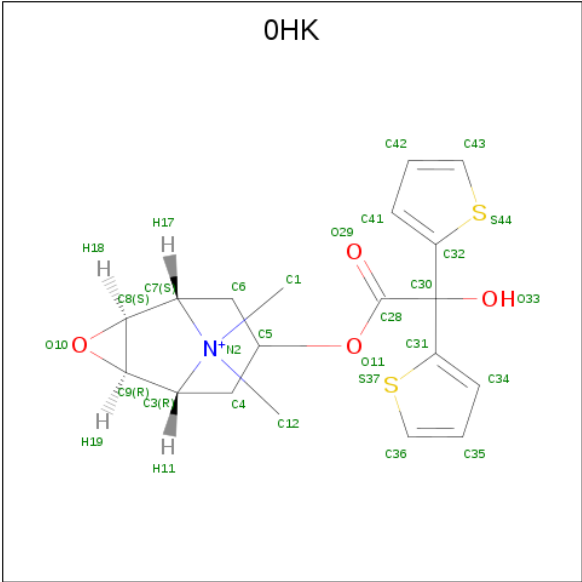
- Molecule 1 is a protein called Muscarinic acetylcholine receptor M3,Endolysin,Muscarinic acetylcholine receptor M3.

Mol	Chain	Residues	Atoms					ZeroOcc	AltConf	Trace
1	A	436	Total	C	N	O	S	0	0	0
			3416	2230	565	597	24			

There are 20 discrepancies between the modelled and reference sequences:

Chain	Residue	Modelled	Actual	Comment	Reference
A	56	GLY	-	expression tag	UNP P08483
A	1003	CYS	ILE	conflict	UNP P00720
A	1012	GLY	ARG	conflict	UNP P00720
A	1021	CYS	THR	conflict	UNP P00720
A	1054	THR	CYS	conflict	UNP P00720
A	1137	ARG	ILE	conflict	UNP P00720
A	1142	CYS	THR	conflict	UNP P00720
A	564	LYS	-	expression tag	UNP P08483
A	565	ARG	-	expression tag	UNP P08483
A	566	LYS	-	expression tag	UNP P08483
A	567	ARG	-	expression tag	UNP P08483
A	568	ARG	-	expression tag	UNP P08483
A	569	LYS	-	expression tag	UNP P08483
A	570	HIS	-	expression tag	UNP P08483
A	571	HIS	-	expression tag	UNP P08483
A	572	HIS	-	expression tag	UNP P08483
A	573	HIS	-	expression tag	UNP P08483
A	574	HIS	-	expression tag	UNP P08483
A	575	HIS	-	expression tag	UNP P08483
A	576	HIS	-	expression tag	UNP P08483

- Molecule 2 is (1R,2R,4S,5S,7S)-7-{[hydroxy(dithiophen-2-yl)acetyl]oxy}-9,9-dimethyl-3-oxa-9-azoniatricyclo[3.3.1.0 2,4]nonane (three-letter code: 0HK) (formula: C₁₉H₂₂NO₄S₂).

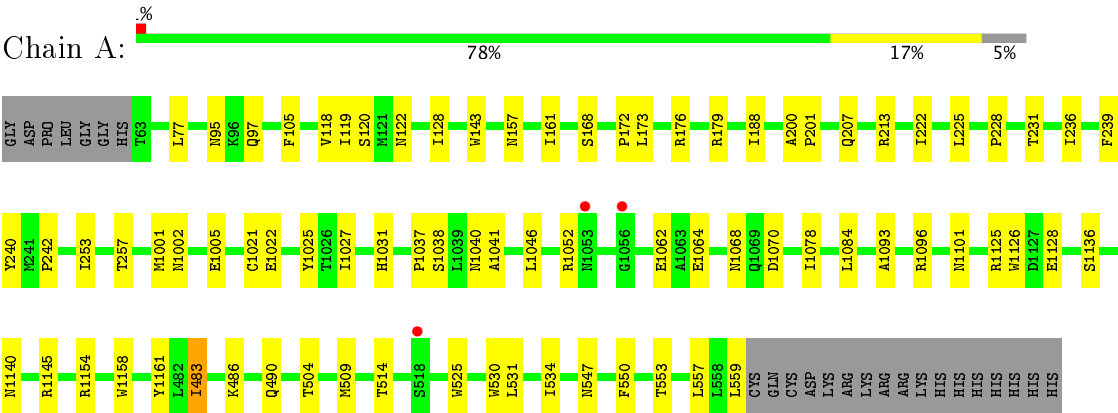


Mol	Chain	Residues	Atoms					ZeroOcc	AltConf
2	A	1	Total	C	N	O	S	0	0
			26	19	1	4	2		

3 Residue-property plots i

These plots are drawn for all protein, RNA and DNA chains in the entry. The first graphic for a chain summarises the proportions of the various outlier classes displayed in the second graphic. The second graphic shows the sequence view annotated by issues in geometry and electron density. Residues are color-coded according to the number of geometric quality criteria for which they contain at least one outlier: green = 0, yellow = 1, orange = 2 and red = 3 or more. A red dot above a residue indicates a poor fit to the electron density ($RSRZ > 2$). Stretches of 2 or more consecutive residues without any outlier are shown as a green connector. Residues present in the sample, but not in the model, are shown in grey.

- Molecule 1: Muscarinic acetylcholine receptor M3,Endolysin,Muscarinic acetylcholine receptor M3



GLOBAL-STATISTICS INFOmissingINFO

4 Model quality [i](#)

4.1 Standard geometry [i](#)

Bond lengths and bond angles in the following residue types are not validated in this section: 0HK

The Z score for a bond length (or angle) is the number of standard deviations the observed value is removed from the expected value. A bond length (or angle) with $|Z| > 5$ is considered an outlier worth inspection. RMSZ is the root-mean-square of all Z scores of the bond lengths (or angles).

Mol	Chain	Bond lengths		Bond angles	
		RMSZ	$\# Z > 5$	RMSZ	$\# Z > 5$
1	A	0.21	0/3496	0.36	0/4771

There are no bond length outliers.

There are no bond angle outliers.

There are no chirality outliers.

There are no planarity outliers.

4.2 Too-close contacts [i](#)

In the following table, the Non-H and H(model) columns list the number of non-hydrogen atoms and hydrogen atoms in the chain respectively. The H(added) column lists the number of hydrogen atoms added and optimized by MolProbity. The Clashes column lists the number of clashes within the asymmetric unit, whereas Symm-Clashes lists symmetry related clashes.

Mol	Chain	Non-H	H(model)	H(added)	Clashes	Symm-Clashes
1	A	3416	0	3399	44	0
2	A	26	0	22	2	0
All	All	3442	0	3421	45	0

The all-atom clashscore is defined as the number of clashes found per 1000 atoms (including hydrogen atoms). The all-atom clashscore for this structure is 7.

All (45) close contacts within the same asymmetric unit are listed below, sorted by their clash magnitude.

Atom-1	Atom-2	Interatomic distance (Å)	Clash overlap (Å)
1:A:176:ARG:NH1	1:A:1005:GLU:OE2	2.14	0.81
1:A:1125:ARG:NE	1:A:1128:GLU:OE2	2.13	0.79

Continued on next page...

Continued from previous page...

Atom-1	Atom-2	Interatomic distance (Å)	Clash overlap (Å)
1:A:77:LEU:HD21	1:A:534:ILE:HG22	1.73	0.70
1:A:228:PRO:HB2	1:A:514:THR:HA	1.73	0.68
1:A:120:SER:HA	1:A:143:TRP:HE1	1.62	0.63
1:A:1052:ARG:NH2	1:A:1062:GLU:OE2	2.32	0.62
1:A:168:SER:OG	1:A:179:ARG:NH1	2.35	0.60
1:A:1064:GLU:O	1:A:1068:ASN:ND2	2.34	0.59
1:A:253:ILE:O	1:A:257:THR:OG1	2.19	0.58
1:A:118:VAL:O	1:A:122:ASN:ND2	2.38	0.57
1:A:1136:SER:O	1:A:1140:ASN:ND2	2.36	0.57
1:A:1002:ASN:HB3	1:A:1158:TRP:CZ3	2.40	0.56
1:A:118:VAL:HG13	1:A:119:ILE:HG13	1.88	0.56
1:A:95:ASN:ND2	1:A:553:THR:OG1	2.39	0.55
1:A:1027:ILE:HG21	1:A:1046:LEU:HD13	1.90	0.54
1:A:1031:HIS:ND1	1:A:1070:ASP:OD2	2.43	0.52
1:A:1126:TRP:HB3	1:A:1154:ARG:HA	1.92	0.51
1:A:1093:ALA:HA	1:A:1096:ARG:HD2	1.94	0.50
1:A:231:THR:HG23	2:A:2000:0HK:H3	1.94	0.49
1:A:236:ILE:HA	1:A:240:TYR:HB2	1.94	0.49
1:A:1001:MET:SD	1:A:486:LYS:HD3	2.53	0.48
1:A:105:PHE:HD1	1:A:188:ILE:HD11	1.79	0.48
1:A:1002:ASN:HB3	1:A:1158:TRP:HZ3	1.78	0.47
1:A:1101:ASN:OD1	1:A:1145:ARG:NH2	2.49	0.45
1:A:207:GLN:OE1	1:A:213:ARG:NH1	2.48	0.45
1:A:1078:ILE:HG23	1:A:1084:LEU:HB3	1.99	0.45
1:A:200:ALA:HB3	1:A:201:PRO:HD3	2.00	0.44
1:A:547:ASN:HB2	1:A:550:PHE:HD1	1.83	0.43
1:A:1125:ARG:HB3	1:A:1128:GLU:HB2	2.01	0.43
1:A:239:PHE:C	1:A:242:PRO:HD2	2.39	0.43
1:A:172:PRO:HB2	1:A:173:LEU:HD12	2.00	0.43
1:A:157:ASN:O	1:A:161:ILE:HG13	2.18	0.42
1:A:530:TRP:O	1:A:534:ILE:HG23	2.20	0.42
1:A:1025:TYR:HE1	1:A:1037:PRO:HA	1.83	0.42
1:A:1038:SER:OG	1:A:1040:ASN:OD1	2.29	0.42
1:A:1161:TYR:O	1:A:483:ILE:HG13	2.20	0.41
1:A:222:ILE:HD12	1:A:225:LEU:HD12	2.02	0.41
1:A:176:ARG:HH12	1:A:486:LYS:HE3	1.85	0.41
1:A:95:ASN:C	1:A:97:GLN:H	2.24	0.41
1:A:128:ILE:HD13	1:A:530:TRP:HE1	1.86	0.41
1:A:531:LEU:O	1:A:534:ILE:HG12	2.20	0.41
2:A:2000:0HK:H20	2:A:2000:0HK:O10	2.21	0.41
1:A:557:LEU:C	1:A:559:LEU:H	2.24	0.40

Continued on next page...

Continued from previous page...

Atom-1	Atom-2	Interatomic distance (Å)	Clash overlap (Å)
1:A:509:MET:HE1	1:A:525:TRP:HA	2.03	0.40
1:A:1040:ASN:OD1	1:A:1041:ALA:N	2.55	0.40

There are no symmetry-related clashes.

4.3 Torsion angles [i](#)

4.3.1 Protein backbone [i](#)

In the following table, the Percentiles column shows the percent Ramachandran outliers of the chain as a percentile score with respect to all X-ray entries followed by that with respect to entries of similar resolution.

The Analysed column shows the number of residues for which the backbone conformation was analysed, and the total number of residues.

Mol	Chain	Analysed	Favoured	Allowed	Outliers	Percentiles
1	A	434/460 (94%)	401 (92%)	31 (7%)	2 (0%)	32 73

All (2) Ramachandran outliers are listed below:

Mol	Chain	Res	Type
1	A	483	ILE
1	A	1022	GLU

4.3.2 Protein sidechains [i](#)

In the following table, the Percentiles column shows the percent sidechain outliers of the chain as a percentile score with respect to all X-ray entries followed by that with respect to entries of similar resolution.

The Analysed column shows the number of residues for which the sidechain conformation was analysed, and the total number of residues.

Mol	Chain	Analysed	Rotameric	Outliers	Percentiles
1	A	355/399 (89%)	352 (99%)	3 (1%)	85 94

All (3) residues with a non-rotameric sidechain are listed below:

Mol	Chain	Res	Type
1	A	1021	CYS
1	A	490	GLN
1	A	504	THR

Some sidechains can be flipped to improve hydrogen bonding and reduce clashes. All (4) such sidechains are listed below:

Mol	Chain	Res	Type
1	A	95	ASN
1	A	103	ASN
1	A	1132	ASN
1	A	526	ASN

4.3.3 RNA [i](#)

There are no RNA molecules in this entry.

4.4 Non-standard residues in protein, DNA, RNA chains [i](#)

There are no non-standard protein/DNA/RNA residues in this entry.

4.5 Carbohydrates [i](#)

There are no carbohydrates in this entry.

4.6 Ligand geometry [i](#)

1 ligand is modelled in this entry.

In the following table, the Counts columns list the number of bonds (or angles) for which Mogul statistics could be retrieved, the number of bonds (or angles) that are observed in the model and the number of bonds (or angles) that are defined in the chemical component dictionary. The Link column lists molecule types, if any, to which the group is linked. The Z score for a bond length (or angle) is the number of standard deviations the observed value is removed from the expected value. A bond length (or angle) with $|Z| > 2$ is considered an outlier worth inspection. RMSZ is the root-mean-square of all Z scores of the bond lengths (or angles).

Mol	Type	Chain	Res	Link	Bond lengths			Bond angles		
					Counts	RMSZ	$\# Z > 2$	Counts	RMSZ	$\# Z > 2$
2	0HK	A	2000	-	28,30,30	1.57	7 (25%)	36,48,48	4.61	17 (47%)

In the following table, the Chirals column lists the number of chiral outliers, the number of chiral centers analysed, the number of these observed in the model and the number defined in the chemical component dictionary. Similar counts are reported in the Torsion and Rings columns. '-' means no outliers of that kind were identified.

Mol	Type	Chain	Res	Link	Chirals	Torsions	Rings
2	0HK	A	2000	-	-	0/10/55/55	0/2/5/5

All (7) bond length outliers are listed below:

Mol	Chain	Res	Type	Atoms	Z	Observed(Å)	Ideal(Å)
2	A	2000	0HK	C1-N2	-3.33	1.44	1.51
2	A	2000	0HK	O10-C8	-2.18	1.41	1.44
2	A	2000	0HK	O33-C30	-2.11	1.38	1.43
2	A	2000	0HK	O11-C5	-2.04	1.41	1.46
2	A	2000	0HK	C31-S37	2.09	1.78	1.74
2	A	2000	0HK	C32-S44	2.18	1.78	1.74
2	A	2000	0HK	O11-C28	3.85	1.41	1.34

All (17) bond angle outliers are listed below:

Mol	Chain	Res	Type	Atoms	Z	Observed(°)	Ideal(°)
2	A	2000	0HK	C35-C36-S37	-10.22	102.18	113.18
2	A	2000	0HK	C42-C43-S44	-10.06	102.34	113.18
2	A	2000	0HK	C7-C8-C9	-7.99	102.56	107.46
2	A	2000	0HK	C3-C9-C8	-7.25	103.02	107.46
2	A	2000	0HK	C6-C7-C8	-4.02	103.72	107.04
2	A	2000	0HK	O11-C28-O29	-2.89	118.62	123.92
2	A	2000	0HK	C4-C3-C9	-2.41	105.05	107.04
2	A	2000	0HK	O10-C9-C8	-2.25	57.77	59.60
2	A	2000	0HK	C12-N2-C7	2.37	116.39	113.03
2	A	2000	0HK	C9-O10-C8	2.97	63.58	60.79
2	A	2000	0HK	C9-C3-N2	3.51	105.72	103.54
2	A	2000	0HK	O10-C8-C7	3.58	120.46	117.11
2	A	2000	0HK	O11-C28-C30	4.68	118.11	110.84
2	A	2000	0HK	C8-C7-N2	6.50	107.58	103.54
2	A	2000	0HK	O10-C9-C3	7.77	124.38	117.11
2	A	2000	0HK	C6-C7-N2	9.41	114.73	108.82
2	A	2000	0HK	C4-C3-N2	11.53	116.07	108.82

There are no chirality outliers.

There are no torsion outliers.

There are no ring outliers.

1 monomer is involved in 2 short contacts:

Mol	Chain	Res	Type	Clashes	Symm-Clashes
2	A	2000	0HK	2	0

4.7 Other polymers [i](#)

There are no such residues in this entry.

4.8 Polymer linkage issues [i](#)

There are no chain breaks in this entry.

5 Fit of model and data

5.1 Protein, DNA and RNA chains

In the following table, the column labelled ‘#RSRZ> 2’ contains the number (and percentage) of RSRZ outliers, followed by percent RSRZ outliers for the chain as percentile scores relative to all X-ray entries and entries of similar resolution. The OWAB column contains the minimum, median, 95th percentile and maximum values of the occupancy-weighted average B-factor per residue. The column labelled ‘Q< 0.9’ lists the number of (and percentage) of residues with an average occupancy less than 0.9.

Mol	Chain	Analysed	<RSRZ>	#RSRZ>2	OWAB(Å ²)	Q<0.9
1	A	436/460 (94%)	-0.15	3 (0%) 87 78	46, 87, 118, 152	0

All (3) RSRZ outliers are listed below:

Mol	Chain	Res	Type	RSRZ
1	A	518	SER	2.5
1	A	1053	ASN	2.5
1	A	1056	GLY	2.1

5.2 Non-standard residues in protein, DNA, RNA chains

There are no non-standard protein/DNA/RNA residues in this entry.

5.3 Carbohydrates

There are no carbohydrates in this entry.

5.4 Ligands

In the following table, the Atoms column lists the number of modelled atoms in the group and the number defined in the chemical component dictionary. LLDF column lists the quality of electron density of the group with respect to its neighbouring residues in protein, DNA or RNA chains. The B-factors column lists the minimum, median, 95th percentile and maximum values of B factors of atoms in the group. The column labelled ‘Q< 0.9’ lists the number of atoms with occupancy less than 0.9.

Mol	Type	Chain	Res	Atoms	RSCC	RSR	LLDF	B-factors(Å ²)	Q<0.9
2	0HK	A	2000	26/26	0.93	0.27	0.23	52,76,89,104	0

5.5 Other polymers [i](#)

There are no such residues in this entry.