



Full wwPDB X-ray Structure Validation Report ⓘ

Sep 18, 2017 – 07:44 AM EDT

PDB ID : 4U8P
Title : Structure of Aspergillus fumigatus UDP-Galactopyranose mutase mutant Y317A complexed with UDP
Authors : Qureshi, I.A.; Chaudhary, R.; Tanner, J.J.
Deposited on : unknown
Resolution : 2.05 Å(reported)

This is a Full wwPDB X-ray Structure Validation Report for a publicly released PDB entry.

We welcome your comments at validation@mail.wwpdb.org

A user guide is available at

<http://wwpdb.org/validation/2016/XrayValidationReportHelp>

with specific help available everywhere you see the ⓘ symbol.

The following versions of software and data (see [references ⓘ](#)) were used in the production of this report:

MolProbity : 4.02b-467
Mogul : 1.7.2 (RC1), CSD as538be (2017)
Xtriage (Phenix) : 1.9-1692
EDS : rb-20029824
Percentile statistics : 20161228.v01 (using entries in the PDB archive December 28th 2016)
Refmac : 5.8.0135
CCP4 : 6.5.0
Ideal geometry (proteins) : Engh & Huber (2001)
Ideal geometry (DNA, RNA) : Parkinson et al. (1996)
Validation Pipeline (wwPDB-VP) : rb-20029824

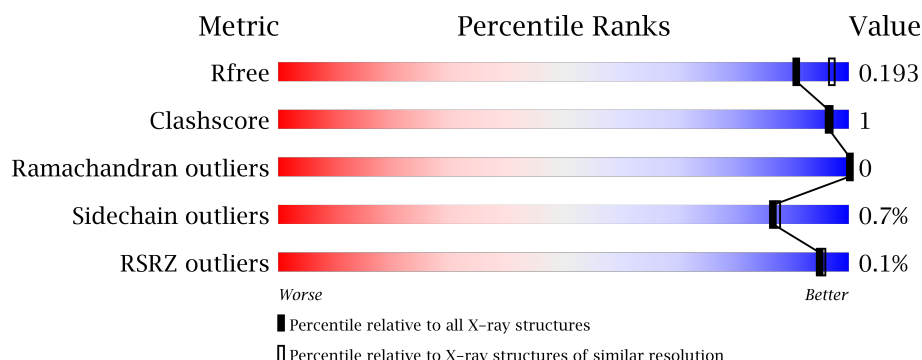
1 Overall quality at a glance

The following experimental techniques were used to determine the structure:

X-RAY DIFFRACTION

The reported resolution of this entry is 2.05 Å.

Percentile scores (ranging between 0-100) for global validation metrics of the entry are shown in the following graphic. The table shows the number of entries on which the scores are based.



Metric	Whole archive (#Entries)	Similar resolution (#Entries, resolution range(Å))
R_{free}	100719	1316 (2.04-2.04)
Clashscore	112137	1394 (2.04-2.04)
Ramachandran outliers	110173	1383 (2.04-2.04)
Sidechain outliers	110143	1383 (2.04-2.04)
RSRZ outliers	101464	1319 (2.04-2.04)

The table below summarises the geometric issues observed across the polymeric chains and their fit to the electron density. The red, orange, yellow and green segments on the lower bar indicate the fraction of residues that contain outliers for ≥ 3 , 2, 1 and 0 types of geometric quality criteria. A grey segment represents the fraction of residues that are not modelled. The numeric value for each fraction is indicated below the corresponding segment, with a dot representing fractions $\leq 5\%$. The upper red bar (where present) indicates the fraction of residues that have poor fit to the electron density. The numeric value is given above the bar.

Mol	Chain	Length	Quality of chain
1	A	513	 96%
1	B	513	 95%
1	C	513	 96%
1	D	513	 94%

The following table lists non-polymeric compounds, carbohydrate monomers and non-standard residues in protein, DNA, RNA chains that are outliers for geometric or electron-density-fit crite-

ria:

Mol	Type	Chain	Res	Chirality	Geometry	Clashes	Electron density
3	UDP	A	602	-	-	-	X
3	UDP	B	602	-	-	-	X
3	UDP	C	602	-	-	-	X
3	UDP	C	603	-	-	-	X
3	UDP	D	602	-	-	-	X
4	SO4	A	607	-	-	-	X
4	SO4	B	608	-	-	-	X
4	SO4	D	606	-	-	-	X
5	EDO	A	610	-	-	-	X
5	EDO	A	611	-	-	-	X
5	EDO	A	612	-	-	-	X
5	EDO	A	613	-	-	-	X
5	EDO	A	614	-	-	-	X
5	EDO	B	610	-	-	-	X
5	EDO	B	611	-	-	-	X
5	EDO	B	612	-	-	-	X
5	EDO	B	613	-	-	-	X
5	EDO	B	614	-	-	-	X
5	EDO	B	615	-	-	-	X
5	EDO	B	616	-	-	-	X
5	EDO	C	609	-	-	-	X
5	EDO	C	611	-	-	-	X
5	EDO	C	612	-	-	-	X
5	EDO	C	613	-	-	-	X
5	EDO	C	615	-	-	-	X
5	EDO	C	616	-	-	-	X
5	EDO	D	608	-	-	-	X
5	EDO	D	610	-	-	-	X

2 Entry composition

There are 6 unique types of molecules in this entry. The entry contains 17305 atoms, of which 0 are hydrogens and 0 are deuteriums.

In the tables below, the ZeroOcc column contains the number of atoms modelled with zero occupancy, the AltConf column contains the number of residues with at least one atom in alternate conformation and the Trace column contains the number of residues modelled with at most 2 atoms.

- Molecule 1 is a protein called UDP-galactopyranose mutase.

Mol	Chain	Residues	Atoms					ZeroOcc	AltConf	Trace
1	A	505	Total	C	N	O	S	0	0	0
			3890	2472	662	735	21			
1	B	505	Total	C	N	O	S	0	0	0
			3886	2470	661	734	21			
1	C	505	Total	C	N	O	S	0	0	0
			3876	2464	658	733	21			
1	D	505	Total	C	N	O	S	0	0	0
			3872	2461	658	732	21			

There are 28 discrepancies between the modelled and reference sequences:

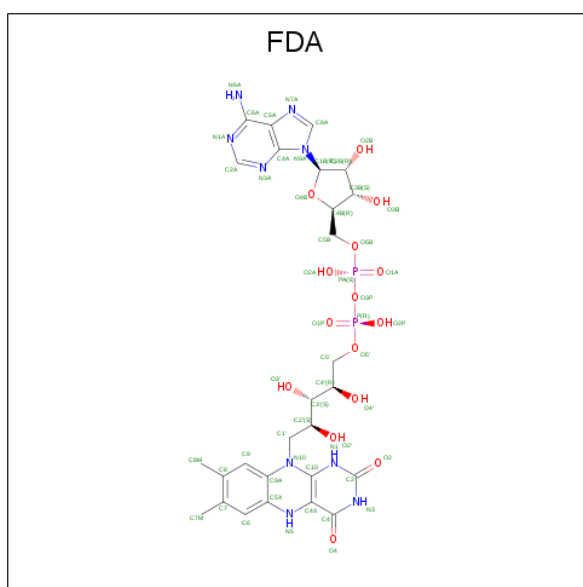
Chain	Residue	Modelled	Actual	Comment	Reference
A	-2	ALA	-	expression tag	UNP Q4W1X2
A	-1	ILE	-	expression tag	UNP Q4W1X2
A	0	ALA	-	expression tag	UNP Q4W1X2
A	317	ALA	TYR	engineered mutation	UNP Q4W1X2
A	344	ALA	LYS	engineered mutation	UNP Q4W1X2
A	345	ALA	LYS	engineered mutation	UNP Q4W1X2
A	429	THR	ALA	engineered mutation	UNP Q4W1X2
B	-2	ALA	-	expression tag	UNP Q4W1X2
B	-1	ILE	-	expression tag	UNP Q4W1X2
B	0	ALA	-	expression tag	UNP Q4W1X2
B	317	ALA	TYR	engineered mutation	UNP Q4W1X2
B	344	ALA	LYS	engineered mutation	UNP Q4W1X2
B	345	ALA	LYS	engineered mutation	UNP Q4W1X2
B	429	THR	ALA	engineered mutation	UNP Q4W1X2
C	-2	ALA	-	expression tag	UNP Q4W1X2
C	-1	ILE	-	expression tag	UNP Q4W1X2
C	0	ALA	-	expression tag	UNP Q4W1X2
C	317	ALA	TYR	engineered mutation	UNP Q4W1X2
C	344	ALA	LYS	engineered mutation	UNP Q4W1X2
C	345	ALA	LYS	engineered mutation	UNP Q4W1X2
C	429	THR	ALA	engineered mutation	UNP Q4W1X2

Continued on next page...

Continued from previous page...

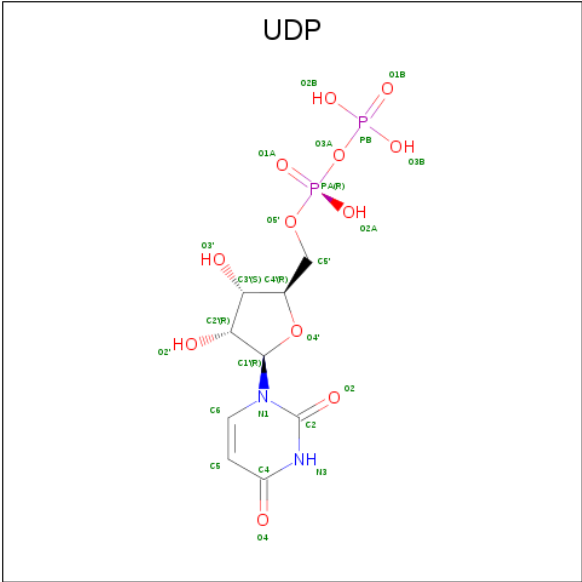
Chain	Residue	Modelled	Actual	Comment	Reference
D	-2	ALA	-	expression tag	UNP Q4W1X2
D	-1	ILE	-	expression tag	UNP Q4W1X2
D	0	ALA	-	expression tag	UNP Q4W1X2
D	317	ALA	TYR	engineered mutation	UNP Q4W1X2
D	344	ALA	LYS	engineered mutation	UNP Q4W1X2
D	345	ALA	LYS	engineered mutation	UNP Q4W1X2
D	429	THR	ALA	engineered mutation	UNP Q4W1X2

- Molecule 2 is DIHYDROFLAVINE-ADENINE DINUCLEOTIDE (three-letter code: FDA) (formula: $C_{27}H_{35}N_9O_{15}P_2$).



Mol	Chain	Residues	Atoms					ZeroOcc	AltConf
2	A	1	Total 53	C 27	N 9	O 15	P 2	0	0
2	B	1	Total 53	C 27	N 9	O 15	P 2	0	0
2	C	1	Total 53	C 27	N 9	O 15	P 2	0	0
2	D	1	Total 53	C 27	N 9	O 15	P 2	0	0

- Molecule 3 is URIDINE-5'-DIPHOSPHATE (three-letter code: UDP) (formula: $C_9H_{14}N_2O_{12}P_2$).



Mol	Chain	Residues	Atoms					ZeroOcc	AltConf
3	A	1	Total	C	N	O	P	0	0
			25	9	2	12	2		
3	A	1	Total	C	N	O		0	0
			17	9	2	6			
3	B	1	Total	C	N	O	P	0	0
			25	9	2	12	2		
3	B	1	Total	C	N	O		0	0
			17	9	2	6			
3	C	1	Total	C	N	O	P	0	0
			25	9	2	12	2		
3	C	1	Total	C	N	O		0	0
			15	8	2	5			
3	D	1	Total	C	N	O	P	0	0
			25	9	2	12	2		

- Molecule 4 is SULFATE ION (three-letter code: SO4) (formula: O₄S).



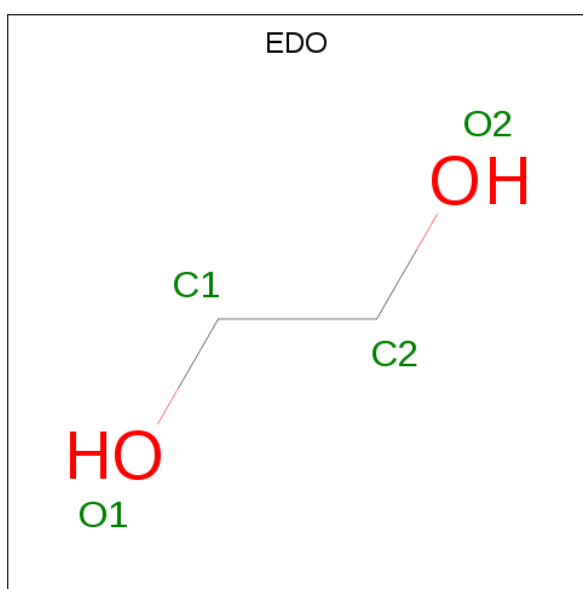
Mol	Chain	Residues	Atoms			ZeroOcc	AltConf
4	A	1	Total	O	S	0	0
			5	4	1		
4	A	1	Total	O	S	0	0
			5	4	1		
4	A	1	Total	O	S	0	0
			5	4	1		
4	A	1	Total	O	S	0	0
			5	4	1		
4	B	1	Total	O	S	0	0
			5	4	1		
4	B	1	Total	O	S	0	0
			5	4	1		
4	B	1	Total	O	S	0	0
			5	4	1		
4	B	1	Total	O	S	0	0
			5	4	1		
4	C	1	Total	O	S	0	0
			5	4	1		
4	C	1	Total	O	S	0	0
			5	4	1		
4	C	1	Total	O	S	0	0
			5	4	1		

Continued on next page...

Continued from previous page...

Mol	Chain	Residues	Atoms			ZeroOcc	AltConf
4	D	1	Total	O	S	0	0
			5	4	1		
4	D	1	Total	O	S	0	0
			5	4	1		
4	D	1	Total	O	S	0	0
			5	4	1		
4	D	1	Total	O	S	0	0
			5	4	1		

- Molecule 5 is 1,2-ETHANEDIOL (three-letter code: EDO) (formula: C₂H₆O₂).



Mol	Chain	Residues	Atoms			ZeroOcc	AltConf
5	A	1	Total	C	O	0	0
			4	2	2		
5	A	1	Total	C	O	0	0
			4	2	2		
5	A	1	Total	C	O	0	0
			4	2	2		
5	A	1	Total	C	O	0	0
			4	2	2		
5	A	1	Total	C	O	0	0
			4	2	2		
5	B	1	Total	C	O	0	0
			4	2	2		

Continued on next page...

Continued from previous page...

Mol	Chain	Residues	Atoms			ZeroOcc	AltConf
5	B	1	Total 4	C 2	O 2	0	0
5	B	1	Total 4	C 2	O 2	0	0
5	B	1	Total 4	C 2	O 2	0	0
5	B	1	Total 4	C 2	O 2	0	0
5	B	1	Total 4	C 2	O 2	0	0
5	B	1	Total 4	C 2	O 2	0	0
5	B	1	Total 4	C 2	O 2	0	0
5	C	1	Total 4	C 2	O 2	0	0
5	C	1	Total 4	C 2	O 2	0	0
5	C	1	Total 4	C 2	O 2	0	0
5	C	1	Total 4	C 2	O 2	0	0
5	C	1	Total 4	C 2	O 2	0	0
5	C	1	Total 4	C 2	O 2	0	0
5	C	1	Total 4	C 2	O 2	0	0
5	C	1	Total 4	C 2	O 2	0	0
5	C	1	Total 4	C 2	O 2	0	0
5	D	1	Total 4	C 2	O 2	0	0
5	D	1	Total 4	C 2	O 2	0	0
5	D	1	Total 4	C 2	O 2	0	0
5	D	1	Total 4	C 2	O 2	0	0
5	D	1	Total 4	C 2	O 2	0	0

- Molecule 6 is water.

Mol	Chain	Residues	Atoms		ZeroOcc	AltConf
6	A	310	Total 310	O 310	0	0
6	B	336	Total 336	O 336	0	0
6	C	285	Total 285	O 285	0	0
6	D	287	Total 287	O 287	0	0

3 Residue-property plots [i](#)

These plots are drawn for all protein, RNA and DNA chains in the entry. The first graphic for a chain summarises the proportions of the various outlier classes displayed in the second graphic. The second graphic shows the sequence view annotated by issues in geometry and electron density. Residues are color-coded according to the number of geometric quality criteria for which they contain at least one outlier: green = 0, yellow = 1, orange = 2 and red = 3 or more. A red dot above a residue indicates a poor fit to the electron density ($RSRZ > 2$). Stretches of 2 or more consecutive residues without any outlier are shown as a green connector. Residues present in the sample, but not in the model, are shown in grey.

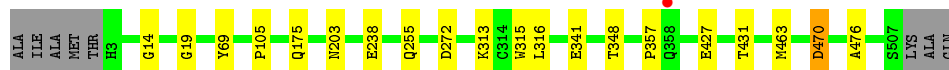
- Molecule 1: UDP-galactopyranose mutase

Chain A:  96%



- Molecule 1: UDP-galactopyranose mutase

Chain B:  95%



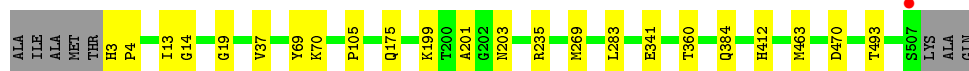
- Molecule 1: UDP-galactopyranose mutase

Chain C:  96%



- Molecule 1: UDP-galactopyranose mutase

Chain D:  94%



4 Data and refinement statistics

Property	Value	Source
Space group	P 65 2 2	Depositor
Cell constants a, b, c, α , β , γ	217.25Å 217.25Å 320.86Å 90.00° 90.00° 120.00°	Depositor
Resolution (Å)	55.25 – 2.05 61.04 – 2.05	Depositor EDS
% Data completeness (in resolution range)	99.8 (55.25-2.05) 99.8 (61.04-2.05)	Depositor EDS
R_{merge}	0.11	Depositor
R_{sym}	(Not available)	Depositor
$\langle I/\sigma(I) \rangle$ ¹	2.25 (at 2.05Å)	Xtriage
Refinement program	PHENIX (phenix.refine: 1.8.4_1496)	Depositor
R, R_{free}	0.168 , 0.193 0.168 , 0.193	Depositor DCC
R_{free} test set	13785 reflections (5.01%)	DCC
Wilson B-factor (Å ²)	25.0	Xtriage
Anisotropy	0.529	Xtriage
Bulk solvent k_{sol} (e/Å ³), B_{sol} (Å ²)	0.36 , 48.1	EDS
L-test for twinning ²	$\langle L \rangle = 0.49$, $\langle L^2 \rangle = 0.32$	Xtriage
Estimated twinning fraction	No twinning to report.	Xtriage
F_o, F_c correlation	0.95	EDS
Total number of atoms	17305	wwPDB-VP
Average B, all atoms (Å ²)	30.0	wwPDB-VP

Xtriage's analysis on translational NCS is as follows: *The largest off-origin peak in the Patterson function is 4.54% of the height of the origin peak. No significant pseudotranslation is detected.*

¹Intensities estimated from amplitudes.

²Theoretical values of $\langle |L| \rangle$, $\langle L^2 \rangle$ for acentric reflections are 0.5, 0.333 respectively for untwinned datasets, and 0.375, 0.2 for perfectly twinned datasets.

5 Model quality [i](#)

5.1 Standard geometry [i](#)

Bond lengths and bond angles in the following residue types are not validated in this section: FDA, UDP, SO4, EDO

The Z score for a bond length (or angle) is the number of standard deviations the observed value is removed from the expected value. A bond length (or angle) with $|Z| > 5$ is considered an outlier worth inspection. RMSZ is the root-mean-square of all Z scores of the bond lengths (or angles).

Mol	Chain	Bond lengths		Bond angles	
		RMSZ	$\# Z > 5$	RMSZ	$\# Z > 5$
1	A	0.36	0/3987	0.49	0/5434
1	B	0.36	0/3983	0.49	0/5429
1	C	0.33	0/3973	0.49	0/5419
1	D	0.34	0/3969	0.49	0/5414
All	All	0.35	0/15912	0.49	0/21696

There are no bond length outliers.

There are no bond angle outliers.

There are no chirality outliers.

There are no planarity outliers.

5.2 Too-close contacts [i](#)

In the following table, the Non-H and H(model) columns list the number of non-hydrogen atoms and hydrogen atoms in the chain respectively. The H(added) column lists the number of hydrogen atoms added and optimized by MolProbity. The Clashes column lists the number of clashes within the asymmetric unit, whereas Symm-Clashes lists symmetry related clashes.

Mol	Chain	Non-H	H(model)	H(added)	Clashes	Symm-Clashes
1	A	3890	0	3748	6	0
1	B	3886	0	3742	11	0
1	C	3876	0	3712	8	0
1	D	3872	0	3709	14	0
2	A	53	0	33	0	0
2	B	53	0	33	0	0
2	C	53	0	33	0	0
2	D	53	0	33	0	0
3	A	42	0	22	0	0

Continued on next page...

Continued from previous page...

Mol	Chain	Non-H	H(model)	H(added)	Clashes	Symm-Clashes
3	B	42	0	22	0	0
3	C	40	0	19	0	0
3	D	25	0	11	0	0
4	A	25	0	0	0	0
4	B	25	0	0	0	0
4	C	20	0	0	0	0
4	D	20	0	0	1	0
5	A	24	0	36	0	0
5	B	32	0	48	1	0
5	C	36	0	54	1	0
5	D	20	0	30	0	0
6	A	310	0	0	0	0
6	B	336	0	0	1	0
6	C	285	0	0	1	0
6	D	287	0	0	2	0
All	All	17305	0	15285	39	0

The all-atom clashscore is defined as the number of clashes found per 1000 atoms (including hydrogen atoms). The all-atom clashscore for this structure is 1.

All (39) close contacts within the same asymmetric unit are listed below, sorted by their clash magnitude.

Atom-1	Atom-2	Interatomic distance (Å)	Clash overlap (Å)
1:D:384:GLN:HG3	1:D:412:HIS:HE1	1.64	0.62
1:B:238:GLU:OE2	1:B:255:GLN:NE2	2.33	0.61
1:C:245:VAL:HG22	1:C:252:VAL:HG22	1.86	0.56
1:D:69:TYR:CG	1:D:463:MET:HG3	2.43	0.54
1:A:384:GLN:HE21	1:A:412:HIS:HE1	1.56	0.53
1:B:348:THR:O	1:B:357:PRO:HG3	2.08	0.53
1:D:69:TYR:CD1	1:D:463:MET:HG3	2.44	0.53
1:A:455:VAL:HG13	1:A:484:PRO:HB3	1.93	0.51
1:B:427:GLU:O	1:B:431:THR:HG23	2.12	0.50
1:A:69:TYR:CG	1:A:463:MET:HG3	2.47	0.49
1:C:69:TYR:CD1	1:C:463:MET:HG3	2.47	0.48
1:C:341:GLU:HG2	6:C:830:HOH:O	2.13	0.48
1:C:69:TYR:CG	1:C:463:MET:HG3	2.48	0.48
1:D:70:LYS:NZ	6:D:701:HOH:O	2.47	0.46
1:D:37:VAL:HG12	1:D:235:ARG:HB3	1.97	0.46
1:B:313:LYS:HD3	1:B:316:LEU:HD21	1.98	0.46
1:B:69:TYR:CG	1:B:463:MET:HG3	2.50	0.46
1:A:69:TYR:CD1	1:A:463:MET:HG3	2.51	0.46

Continued on next page...

Continued from previous page...

Atom-1	Atom-2	Interatomic distance (Å)	Clash overlap (Å)
1:D:199:LYS:HE3	1:D:201:ALA:HB2	1.98	0.46
1:C:14:GLY:O	1:C:19:GLY:HA3	2.17	0.45
1:D:70:LYS:HE3	4:D:606:SO4:O2	2.17	0.45
1:A:14:GLY:O	1:A:19:GLY:HA3	2.17	0.44
1:B:315:TRP:CG	5:B:615:EDO:H21	2.53	0.44
1:D:105:PRO:HD3	1:D:203:ASN:HB3	2.00	0.44
1:D:13:ILE:HG21	1:D:269:MET:HE3	1.99	0.44
1:A:372:LEU:HD21	1:A:395:LEU:HD21	1.98	0.44
1:D:14:GLY:O	1:D:19:GLY:HA3	2.19	0.43
1:B:14:GLY:O	1:B:19:GLY:HA3	2.19	0.43
1:D:341:GLU:HG2	6:D:835:HOH:O	2.17	0.43
1:D:70:LYS:HB2	1:D:493:THR:HA	1.99	0.43
1:B:470:ASP:HB3	1:B:476:ALA:HB3	2.01	0.43
1:C:66:PHE:HA	5:C:612:EDO:H21	2.02	0.42
1:C:143:ASP:O	1:C:147:VAL:HG23	2.19	0.42
1:B:341:GLU:HG2	6:B:888:HOH:O	2.20	0.42
1:D:3:HIS:HA	1:D:4:PRO:HD3	1.87	0.41
1:B:272:ASP:OD1	1:B:272:ASP:N	2.52	0.41
1:B:105:PRO:HD3	1:B:203:ASN:HB3	2.03	0.41
1:C:18:THR:OG1	1:C:461:SER:HB3	2.20	0.41
1:D:283:LEU:HA	1:D:283:LEU:HD23	1.93	0.41

There are no symmetry-related clashes.

5.3 Torsion angles

5.3.1 Protein backbone

In the following table, the Percentiles column shows the percent Ramachandran outliers of the chain as a percentile score with respect to all X-ray entries followed by that with respect to entries of similar resolution.

The Analysed column shows the number of residues for which the backbone conformation was analysed, and the total number of residues.

Mol	Chain	Analysed	Favoured	Allowed	Outliers	Percentiles	
1	A	503/513 (98%)	493 (98%)	10 (2%)	0	100	100
1	B	503/513 (98%)	492 (98%)	11 (2%)	0	100	100
1	C	503/513 (98%)	493 (98%)	10 (2%)	0	100	100
1	D	503/513 (98%)	496 (99%)	7 (1%)	0	100	100

Continued on next page...

Continued from previous page...

Mol	Chain	Analysed	Favoured	Allowed	Outliers	Percentiles	
All	All	2012/2052 (98%)	1974 (98%)	38 (2%)	0	100	100

There are no Ramachandran outliers to report.

5.3.2 Protein sidechains ⓘ

In the following table, the Percentiles column shows the percent sidechain outliers of the chain as a percentile score with respect to all X-ray entries followed by that with respect to entries of similar resolution.

The Analysed column shows the number of residues for which the sidechain conformation was analysed, and the total number of residues.

Mol	Chain	Analysed	Rotameric	Outliers	Percentiles	
1	A	408/431 (95%)	405 (99%)	3 (1%)	87	87
1	B	407/431 (94%)	405 (100%)	2 (0%)	91	91
1	C	403/431 (94%)	400 (99%)	3 (1%)	87	87
1	D	403/431 (94%)	400 (99%)	3 (1%)	87	87
All	All	1621/1724 (94%)	1610 (99%)	11 (1%)	87	87

All (11) residues with a non-rotameric sidechain are listed below:

Mol	Chain	Res	Type
1	A	175	GLN
1	A	360	THR
1	A	470	ASP
1	B	175	GLN
1	B	470	ASP
1	C	149	MET
1	C	175	GLN
1	C	470	ASP
1	D	175	GLN
1	D	360	THR
1	D	470	ASP

Some sidechains can be flipped to improve hydrogen bonding and reduce clashes. All (2) such sidechains are listed below:

Mol	Chain	Res	Type
1	A	384	GLN

Continued on next page...

Continued from previous page...

Mol	Chain	Res	Type
1	D	384	GLN

5.3.3 RNA ⓘ

There are no RNA molecules in this entry.

5.4 Non-standard residues in protein, DNA, RNA chains ⓘ

There are no non-standard protein/DNA/RNA residues in this entry.

5.5 Carbohydrates ⓘ

There are no carbohydrates in this entry.

5.6 Ligand geometry ⓘ

57 ligands are modelled in this entry.

In the following table, the Counts columns list the number of bonds (or angles) for which Mogul statistics could be retrieved, the number of bonds (or angles) that are observed in the model and the number of bonds (or angles) that are defined in the chemical component dictionary. The Link column lists molecule types, if any, to which the group is linked. The Z score for a bond length (or angle) is the number of standard deviations the observed value is removed from the expected value. A bond length (or angle) with $|Z| > 2$ is considered an outlier worth inspection. RMSZ is the root-mean-square of all Z scores of the bond lengths (or angles).

Mol	Type	Chain	Res	Link	Bond lengths			Bond angles		
					Counts	RMSZ	$\# Z > 2$	Counts	RMSZ	$\# Z > 2$
2	FDA	A	601	-	51,58,58	2.75	20 (39%)	54,89,89	2.00	11 (20%)
3	UDP	A	602	-	21,26,26	2.45	7 (33%)	22,40,40	1.82	2 (9%)
3	UDP	A	603	-	14,18,26	2.34	3 (21%)	15,26,40	1.73	1 (6%)
4	SO4	A	604	-	4,4,4	0.16	0	6,6,6	0.14	0
4	SO4	A	605	-	4,4,4	0.15	0	6,6,6	0.12	0
4	SO4	A	606	-	4,4,4	0.16	0	6,6,6	0.11	0
4	SO4	A	607	-	4,4,4	0.21	0	6,6,6	0.10	0
4	SO4	A	608	-	4,4,4	0.15	0	6,6,6	0.12	0
5	EDO	A	609	-	3,3,3	0.47	0	2,2,2	0.32	0
5	EDO	A	610	-	3,3,3	0.51	0	2,2,2	0.10	0
5	EDO	A	611	-	3,3,3	0.52	0	2,2,2	0.21	0
5	EDO	A	612	-	3,3,3	0.49	0	2,2,2	0.05	0

Mol	Type	Chain	Res	Link	Bond lengths			Bond angles		
					Counts	RMSZ	# Z > 2	Counts	RMSZ	# Z > 2
5	EDO	A	613	-	3,3,3	0.55	0	2,2,2	0.28	0
5	EDO	A	614	-	3,3,3	0.58	0	2,2,2	0.40	0
2	FDA	B	601	-	51,58,58	2.68	17 (33%)	54,89,89	2.08	8 (14%)
3	UDP	B	602	-	21,26,26	2.45	7 (33%)	22,40,40	1.73	3 (13%)
3	UDP	B	603	-	14,18,26	2.32	3 (21%)	15,26,40	1.64	1 (6%)
4	SO4	B	604	-	4,4,4	0.19	0	6,6,6	0.16	0
4	SO4	B	605	-	4,4,4	0.15	0	6,6,6	0.10	0
4	SO4	B	606	-	4,4,4	0.14	0	6,6,6	0.10	0
4	SO4	B	607	-	4,4,4	0.17	0	6,6,6	0.05	0
4	SO4	B	608	-	4,4,4	0.15	0	6,6,6	0.19	0
5	EDO	B	609	-	3,3,3	0.55	0	2,2,2	0.26	0
5	EDO	B	610	-	3,3,3	0.53	0	2,2,2	0.29	0
5	EDO	B	611	-	3,3,3	0.52	0	2,2,2	0.29	0
5	EDO	B	612	-	3,3,3	0.58	0	2,2,2	0.32	0
5	EDO	B	613	-	3,3,3	0.57	0	2,2,2	0.38	0
5	EDO	B	614	-	3,3,3	0.55	0	2,2,2	0.28	0
5	EDO	B	615	-	3,3,3	0.52	0	2,2,2	0.22	0
5	EDO	B	616	-	3,3,3	0.56	0	2,2,2	0.25	0
2	FDA	C	601	-	51,58,58	2.83	19 (37%)	54,89,89	2.08	10 (18%)
3	UDP	C	602	-	21,26,26	2.42	7 (33%)	22,40,40	1.75	3 (13%)
3	UDP	C	603	-	12,16,26	3.08	6 (50%)	13,23,40	2.34	3 (23%)
4	SO4	C	604	-	4,4,4	0.16	0	6,6,6	0.17	0
4	SO4	C	605	-	4,4,4	0.16	0	6,6,6	0.15	0
4	SO4	C	606	-	4,4,4	0.15	0	6,6,6	0.13	0
4	SO4	C	607	-	4,4,4	0.16	0	6,6,6	0.12	0
5	EDO	C	608	-	3,3,3	0.49	0	2,2,2	0.22	0
5	EDO	C	609	-	3,3,3	0.55	0	2,2,2	0.14	0
5	EDO	C	610	-	3,3,3	0.53	0	2,2,2	0.30	0
5	EDO	C	611	-	3,3,3	0.50	0	2,2,2	0.27	0
5	EDO	C	612	-	3,3,3	0.56	0	2,2,2	0.14	0
5	EDO	C	613	-	3,3,3	0.55	0	2,2,2	0.34	0
5	EDO	C	614	-	3,3,3	0.49	0	2,2,2	0.24	0
5	EDO	C	615	-	3,3,3	0.57	0	2,2,2	0.36	0
5	EDO	C	616	-	3,3,3	0.59	0	2,2,2	0.33	0
2	FDA	D	601	-	51,58,58	2.83	18 (35%)	54,89,89	2.08	13 (24%)
3	UDP	D	602	-	21,26,26	2.48	7 (33%)	22,40,40	1.81	2 (9%)
4	SO4	D	603	-	4,4,4	0.18	0	6,6,6	0.13	0
4	SO4	D	604	-	4,4,4	0.15	0	6,6,6	0.12	0
4	SO4	D	605	-	4,4,4	0.14	0	6,6,6	0.23	0
4	SO4	D	606	-	4,4,4	0.14	0	6,6,6	0.18	0
5	EDO	D	607	-	3,3,3	0.47	0	2,2,2	0.30	0

Mol	Type	Chain	Res	Link	Bond lengths			Bond angles		
					Counts	RMSZ	# Z > 2	Counts	RMSZ	# Z > 2
5	EDO	D	608	-	3,3,3	0.52	0	2,2,2	0.24	0
5	EDO	D	609	-	3,3,3	0.55	0	2,2,2	0.27	0
5	EDO	D	610	-	3,3,3	0.51	0	2,2,2	0.16	0
5	EDO	D	611	-	3,3,3	0.57	0	2,2,2	0.30	0

In the following table, the Chirals column lists the number of chiral outliers, the number of chiral centers analysed, the number of these observed in the model and the number defined in the chemical component dictionary. Similar counts are reported in the Torsion and Rings columns. '-' means no outliers of that kind were identified.

Mol	Type	Chain	Res	Link	Chirals	Torsions	Rings
2	FDA	A	601	-	-	0/28/50/50	0/6/6/6
3	UDP	A	602	-	-	0/12/32/32	0/2/2/2
3	UDP	A	603	-	-	0/2/22/32	0/2/2/2
4	SO4	A	604	-	-	0/0/0/0	0/0/0/0
4	SO4	A	605	-	-	0/0/0/0	0/0/0/0
4	SO4	A	606	-	-	0/0/0/0	0/0/0/0
4	SO4	A	607	-	-	0/0/0/0	0/0/0/0
4	SO4	A	608	-	-	0/0/0/0	0/0/0/0
5	EDO	A	609	-	-	0/1/1/1	0/0/0/0
5	EDO	A	610	-	-	0/1/1/1	0/0/0/0
5	EDO	A	611	-	-	0/1/1/1	0/0/0/0
5	EDO	A	612	-	-	0/1/1/1	0/0/0/0
5	EDO	A	613	-	-	0/1/1/1	0/0/0/0
5	EDO	A	614	-	-	0/1/1/1	0/0/0/0
2	FDA	B	601	-	-	0/28/50/50	0/6/6/6
3	UDP	B	602	-	-	0/12/32/32	0/2/2/2
3	UDP	B	603	-	-	0/2/22/32	0/2/2/2
4	SO4	B	604	-	-	0/0/0/0	0/0/0/0
4	SO4	B	605	-	-	0/0/0/0	0/0/0/0
4	SO4	B	606	-	-	0/0/0/0	0/0/0/0
4	SO4	B	607	-	-	0/0/0/0	0/0/0/0
4	SO4	B	608	-	-	0/0/0/0	0/0/0/0
5	EDO	B	609	-	-	0/1/1/1	0/0/0/0
5	EDO	B	610	-	-	0/1/1/1	0/0/0/0
5	EDO	B	611	-	-	0/1/1/1	0/0/0/0
5	EDO	B	612	-	-	0/1/1/1	0/0/0/0
5	EDO	B	613	-	-	0/1/1/1	0/0/0/0
5	EDO	B	614	-	-	0/1/1/1	0/0/0/0
5	EDO	B	615	-	-	0/1/1/1	0/0/0/0
5	EDO	B	616	-	-	0/1/1/1	0/0/0/0
2	FDA	C	601	-	-	0/28/50/50	0/6/6/6
3	UDP	C	602	-	-	0/12/32/32	0/2/2/2

Continued on next page...

Continued from previous page...

Mol	Type	Chain	Res	Link	Chirals	Torsions	Rings
3	UDP	C	603	-	-	0/0/17/32	0/2/2/2
4	SO4	C	604	-	-	0/0/0/0	0/0/0/0
4	SO4	C	605	-	-	0/0/0/0	0/0/0/0
4	SO4	C	606	-	-	0/0/0/0	0/0/0/0
4	SO4	C	607	-	-	0/0/0/0	0/0/0/0
5	EDO	C	608	-	-	0/1/1/1	0/0/0/0
5	EDO	C	609	-	-	0/1/1/1	0/0/0/0
5	EDO	C	610	-	-	0/1/1/1	0/0/0/0
5	EDO	C	611	-	-	0/1/1/1	0/0/0/0
5	EDO	C	612	-	-	0/1/1/1	0/0/0/0
5	EDO	C	613	-	-	0/1/1/1	0/0/0/0
5	EDO	C	614	-	-	0/1/1/1	0/0/0/0
5	EDO	C	615	-	-	0/1/1/1	0/0/0/0
5	EDO	C	616	-	-	0/1/1/1	0/0/0/0
2	FDA	D	601	-	-	0/28/50/50	0/6/6/6
3	UDP	D	602	-	-	0/12/32/32	0/2/2/2
4	SO4	D	603	-	-	0/0/0/0	0/0/0/0
4	SO4	D	604	-	-	0/0/0/0	0/0/0/0
4	SO4	D	605	-	-	0/0/0/0	0/0/0/0
4	SO4	D	606	-	-	0/0/0/0	0/0/0/0
5	EDO	D	607	-	-	0/1/1/1	0/0/0/0
5	EDO	D	608	-	-	0/1/1/1	0/0/0/0
5	EDO	D	609	-	-	0/1/1/1	0/0/0/0
5	EDO	D	610	-	-	0/1/1/1	0/0/0/0
5	EDO	D	611	-	-	0/1/1/1	0/0/0/0

All (114) bond length outliers are listed below:

Mol	Chain	Res	Type	Atoms	Z	Observed(Å)	Ideal(Å)
3	C	603	UDP	C3'-C2'	-4.76	1.46	1.53
3	B	602	UDP	PB-O3A	-3.61	1.54	1.60
3	A	602	UDP	PB-O3A	-3.60	1.54	1.60
2	A	601	FDA	C9A-C5X	-3.57	1.35	1.42
3	D	602	UDP	PB-O3A	-3.31	1.54	1.60
2	D	601	FDA	C9A-C5X	-3.22	1.36	1.42
2	B	601	FDA	C9A-C5X	-3.15	1.36	1.42
2	A	601	FDA	C2B-C1B	-3.06	1.48	1.53
3	C	602	UDP	PB-O3A	-3.02	1.55	1.60
2	C	601	FDA	C9A-C5X	-2.99	1.36	1.42
2	B	601	FDA	C2B-C1B	-2.99	1.48	1.53
2	C	601	FDA	C2B-C1B	-2.86	1.49	1.53
3	A	602	UDP	C3'-C2'	-2.71	1.46	1.53

Continued on next page...

Continued from previous page...

Mol	Chain	Res	Type	Atoms	Z	Observed(Å)	Ideal(Å)
3	C	602	UDP	C3'-C2'	-2.66	1.46	1.53
3	D	602	UDP	C3'-C2'	-2.60	1.46	1.53
3	B	602	UDP	C3'-C2'	-2.55	1.46	1.53
2	A	601	FDA	PA-O5B	-2.54	1.48	1.59
3	D	602	UDP	O2'-C2'	-2.52	1.37	1.43
2	B	601	FDA	O3B-C3B	-2.52	1.37	1.43
2	D	601	FDA	PA-O5B	-2.50	1.48	1.59
3	C	602	UDP	O2'-C2'	-2.48	1.37	1.43
2	D	601	FDA	C2B-C1B	-2.47	1.49	1.53
2	C	601	FDA	O3B-C3B	-2.45	1.37	1.43
2	A	601	FDA	O3B-C3B	-2.44	1.37	1.43
3	A	602	UDP	O2'-C2'	-2.40	1.37	1.43
2	D	601	FDA	O3B-C3B	-2.40	1.37	1.43
3	C	603	UDP	O2'-C2'	-2.34	1.37	1.43
3	B	602	UDP	O2'-C2'	-2.34	1.37	1.43
2	B	601	FDA	PA-O5B	-2.28	1.49	1.59
2	C	601	FDA	PA-O5B	-2.26	1.49	1.59
2	A	601	FDA	PA-O2A	-2.23	1.43	1.55
2	A	601	FDA	C2B-C3B	-2.13	1.47	1.53
2	A	601	FDA	C4X-C10	-2.10	1.37	1.41
2	C	601	FDA	C2B-C3B	-2.08	1.47	1.53
2	B	601	FDA	PA-O2A	-2.08	1.44	1.55
2	C	601	FDA	O2B-C2B	-2.01	1.38	1.43
3	C	603	UDP	O3'-C3'	-2.01	1.38	1.43
2	D	601	FDA	C2B-C3B	-2.01	1.48	1.53
2	C	601	FDA	C2-N3	2.01	1.42	1.38
2	D	601	FDA	P-O1P	2.16	1.59	1.50
3	C	602	UDP	PA-O1A	2.25	1.59	1.50
3	B	602	UDP	PA-O1A	2.26	1.59	1.50
2	C	601	FDA	C2-N1	2.32	1.42	1.38
2	A	601	FDA	P-O1P	2.33	1.59	1.50
2	A	601	FDA	C6A-N6A	2.40	1.43	1.34
3	B	603	UDP	C2-N3	2.43	1.43	1.38
2	B	601	FDA	C6A-N6A	2.45	1.44	1.34
3	C	603	UDP	C2-N3	2.48	1.43	1.38
2	C	601	FDA	C6A-N6A	2.50	1.44	1.34
3	D	602	UDP	PA-O1A	2.55	1.60	1.50
2	B	601	FDA	C2-N1	2.56	1.43	1.38
3	A	602	UDP	C2-N3	2.56	1.43	1.38
3	A	602	UDP	PA-O1A	2.57	1.60	1.50
2	D	601	FDA	C6A-N6A	2.58	1.44	1.34
2	A	601	FDA	C2-N1	2.58	1.43	1.38

Continued on next page...

Continued from previous page...

Mol	Chain	Res	Type	Atoms	Z	Observed(Å)	Ideal(Å)
3	B	602	UDP	C2-N3	2.59	1.43	1.38
3	A	603	UDP	C2-N3	2.61	1.43	1.38
2	B	601	FDA	C2A-N3A	2.68	1.36	1.32
3	C	602	UDP	C2-N3	2.71	1.43	1.38
2	A	601	FDA	C2A-N3A	2.72	1.36	1.32
3	D	602	UDP	C2-N3	2.83	1.43	1.38
2	D	601	FDA	C2-N1	2.91	1.43	1.38
2	D	601	FDA	C2A-N3A	2.98	1.37	1.32
2	C	601	FDA	C2A-N3A	3.00	1.37	1.32
2	A	601	FDA	C9-C9A	3.01	1.47	1.40
2	A	601	FDA	C4-C4X	3.28	1.47	1.41
2	C	601	FDA	C9-C9A	3.39	1.48	1.40
2	B	601	FDA	C4-C4X	3.48	1.48	1.41
2	B	601	FDA	C9-C9A	3.48	1.48	1.40
2	D	601	FDA	C9-C9A	3.58	1.48	1.40
2	D	601	FDA	C4-C4X	3.82	1.48	1.41
2	B	601	FDA	C6-C5X	3.95	1.47	1.41
2	C	601	FDA	C4-N3	4.10	1.40	1.33
2	A	601	FDA	C4-N3	4.16	1.40	1.33
2	D	601	FDA	C4-N3	4.23	1.40	1.33
3	B	603	UDP	C4-N3	4.23	1.40	1.33
2	C	601	FDA	C4-C4X	4.33	1.49	1.41
2	A	601	FDA	C6-C5X	4.39	1.48	1.41
3	C	603	UDP	C4-N3	4.40	1.41	1.33
3	A	603	UDP	C4-N3	4.45	1.41	1.33
2	B	601	FDA	C4-N3	4.64	1.41	1.33
3	A	602	UDP	C4-N3	4.67	1.41	1.33
3	C	602	UDP	C4-N3	4.77	1.41	1.33
2	B	601	FDA	C9A-N10	4.80	1.45	1.38
3	D	602	UDP	C4-N3	4.82	1.41	1.33
3	B	602	UDP	C4-N3	4.86	1.41	1.33
2	D	601	FDA	C6-C5X	4.90	1.49	1.41
2	A	601	FDA	C9A-N10	4.96	1.45	1.38
2	A	601	FDA	O4-C4	5.03	1.37	1.24
2	C	601	FDA	C6-C5X	5.14	1.49	1.41
2	C	601	FDA	O4-C4	5.28	1.37	1.24
2	D	601	FDA	C9A-N10	5.28	1.45	1.38
2	D	601	FDA	O4-C4	5.30	1.37	1.24
2	B	601	FDA	O4-C4	5.40	1.38	1.24
2	C	601	FDA	C9A-N10	5.63	1.46	1.38
2	B	601	FDA	C5X-N5	6.00	1.44	1.35
2	C	601	FDA	C5X-N5	6.20	1.44	1.35

Continued on next page...

Continued from previous page...

Mol	Chain	Res	Type	Atoms	Z	Observed(Å)	Ideal(Å)
2	A	601	FDA	C5X-N5	6.24	1.44	1.35
2	D	601	FDA	C5X-N5	6.85	1.45	1.35
3	A	603	UDP	C6-N1	6.94	1.45	1.35
3	B	603	UDP	C6-N1	7.01	1.45	1.35
3	C	603	UDP	C6-N1	7.14	1.45	1.35
3	B	602	UDP	C6-N1	7.19	1.45	1.35
3	A	602	UDP	C6-N1	7.21	1.45	1.35
3	C	602	UDP	C6-N1	7.24	1.45	1.35
3	D	602	UDP	C6-N1	7.37	1.45	1.35
2	B	601	FDA	C4X-N5	7.54	1.44	1.33
2	A	601	FDA	C4X-N5	7.77	1.44	1.33
2	B	601	FDA	C10-N1	7.98	1.44	1.33
2	D	601	FDA	C4X-N5	8.00	1.44	1.33
2	C	601	FDA	C10-N1	8.29	1.44	1.33
2	C	601	FDA	C4X-N5	8.31	1.45	1.33
2	D	601	FDA	C10-N1	8.33	1.45	1.33
2	A	601	FDA	C10-N1	8.51	1.45	1.33

All (57) bond angle outliers are listed below:

Mol	Chain	Res	Type	Atoms	Z	Observed(°)	Ideal(°)
2	D	601	FDA	N3A-C2A-N1A	-10.21	119.97	128.86
2	C	601	FDA	N3A-C2A-N1A	-9.91	120.23	128.86
2	B	601	FDA	N3A-C2A-N1A	-9.63	120.47	128.86
2	A	601	FDA	N3A-C2A-N1A	-9.55	120.54	128.86
2	B	601	FDA	C4X-C4-N3	-3.00	119.21	123.48
2	D	601	FDA	C1B-N9A-C4A	-2.84	121.73	126.64
2	C	601	FDA	C1B-N9A-C4A	-2.82	121.77	126.64
2	D	601	FDA	O2A-PA-O5B	-2.74	95.21	108.14
2	D	601	FDA	O2P-P-O5'	-2.71	95.36	108.14
2	D	601	FDA	C4X-C4-N3	-2.68	119.66	123.48
2	C	601	FDA	C4X-C4-N3	-2.68	119.67	123.48
2	A	601	FDA	C4X-C4-N3	-2.54	119.87	123.48
2	A	601	FDA	C1B-N9A-C4A	-2.45	122.40	126.64
2	B	601	FDA	C1B-N9A-C4A	-2.38	122.52	126.64
2	C	601	FDA	O2A-PA-O5B	-2.23	97.60	108.14
2	A	601	FDA	O2P-P-O5'	-2.23	97.61	108.14
2	C	601	FDA	C4A-C5A-N7A	-2.15	107.33	109.41
2	B	601	FDA	C4A-C5A-N7A	-2.14	107.34	109.41
2	A	601	FDA	C4A-C5A-N7A	-2.14	107.35	109.41
3	C	602	UDP	O5'-PA-O1A	-2.10	100.77	109.25
2	D	601	FDA	C4A-C5A-N7A	-2.07	107.41	109.41

Continued on next page...

Continued from previous page...

Mol	Chain	Res	Type	Atoms	Z	Observed(°)	Ideal(°)
2	A	601	FDA	O2A-PA-O5B	-2.01	98.64	108.14
3	B	602	UDP	O5'-PA-O1A	-2.01	101.14	109.25
2	C	601	FDA	O4'-C4'-C3'	2.02	114.09	109.09
2	D	601	FDA	O4'-C4'-C3'	2.04	114.16	109.09
2	D	601	FDA	O2A-PA-O1A	2.05	122.90	112.28
2	D	601	FDA	O5'-P-O1P	2.08	117.64	109.25
2	A	601	FDA	O5B-PA-O1A	2.18	118.05	109.25
2	A	601	FDA	C4'-C3'-C2'	2.23	118.20	113.41
3	C	602	UDP	O2A-PA-O5'	2.28	118.92	108.14
2	D	601	FDA	C1'-N10-C10	2.44	121.00	118.50
2	A	601	FDA	C1'-N10-C9A	2.50	120.64	118.35
3	B	602	UDP	O2A-PA-O5'	2.54	120.16	108.14
2	C	601	FDA	C4'-C3'-C2'	2.65	119.11	113.41
2	D	601	FDA	C4'-C3'-C2'	2.68	119.17	113.41
2	B	601	FDA	C4'-C3'-C2'	2.69	119.20	113.41
3	C	603	UDP	O4'-C1'-N1	2.74	112.58	108.94
3	A	602	UDP	O5'-PA-O1A	2.76	120.40	109.25
3	D	602	UDP	O5'-PA-O1A	2.76	120.40	109.25
3	C	603	UDP	C3'-C2'-C1'	3.23	105.90	100.94
2	C	601	FDA	C1'-N10-C9A	3.25	121.33	118.35
2	B	601	FDA	C1'-N10-C9A	3.68	121.72	118.35
2	C	601	FDA	C5X-C9A-N10	4.19	120.77	117.66
2	D	601	FDA	C5X-C9A-N10	4.21	120.78	117.66
2	B	601	FDA	C5X-C9A-N10	4.28	120.84	117.66
2	A	601	FDA	C5X-C9A-N10	4.67	121.13	117.66
2	A	601	FDA	C4-N3-C2	5.14	119.66	115.16
2	D	601	FDA	C4-N3-C2	5.18	119.69	115.16
2	B	601	FDA	C4-N3-C2	5.65	120.10	115.16
2	C	601	FDA	C4-N3-C2	5.67	120.12	115.16
3	B	603	UDP	C4-N3-C2	6.01	119.29	114.13
3	A	603	UDP	C4-N3-C2	6.27	119.52	114.13
3	B	602	UDP	C4-N3-C2	6.57	119.78	114.13
3	C	602	UDP	C4-N3-C2	6.65	119.84	114.13
3	C	603	UDP	C4-N3-C2	6.70	119.88	114.13
3	D	602	UDP	C4-N3-C2	6.99	120.14	114.13
3	A	602	UDP	C4-N3-C2	7.08	120.21	114.13

There are no chirality outliers.

There are no torsion outliers.

There are no ring outliers.

3 monomers are involved in 3 short contacts:

Mol	Chain	Res	Type	Clashes	Symm-Clashes
5	B	615	EDO	1	0
5	C	612	EDO	1	0
4	D	606	SO4	1	0

5.7 Other polymers [i](#)

There are no such residues in this entry.

5.8 Polymer linkage issues [i](#)

There are no chain breaks in this entry.

6 Fit of model and data [i](#)

6.1 Protein, DNA and RNA chains [i](#)

In the following table, the column labelled ‘#RSRZ> 2’ contains the number (and percentage) of RSRZ outliers, followed by percent RSRZ outliers for the chain as percentile scores relative to all X-ray entries and entries of similar resolution. The OWAB column contains the minimum, median, 95th percentile and maximum values of the occupancy-weighted average B-factor per residue. The column labelled ‘Q< 0.9’ lists the number of (and percentage) of residues with an average occupancy less than 0.9.

Mol	Chain	Analysed	<RSRZ>	#RSRZ>2	OWAB(Å ²)	Q<0.9
1	A	505/513 (98%)	-0.68	0 100 100	18, 27, 44, 67	0
1	B	505/513 (98%)	-0.72	1 (0%) 94 95	17, 25, 42, 64	0
1	C	505/513 (98%)	-0.68	0 100 100	19, 30, 49, 66	0
1	D	505/513 (98%)	-0.68	1 (0%) 94 95	18, 30, 49, 70	0
All	All	2020/2052 (98%)	-0.69	2 (0%) 95 95	17, 28, 46, 70	0

All (2) RSRZ outliers are listed below:

Mol	Chain	Res	Type	RSRZ
1	B	358	GLN	2.7
1	D	507	SER	2.3

6.2 Non-standard residues in protein, DNA, RNA chains [i](#)

There are no non-standard protein/DNA/RNA residues in this entry.

6.3 Carbohydrates [i](#)

There are no carbohydrates in this entry.

6.4 Ligands [i](#)

In the following table, the Atoms column lists the number of modelled atoms in the group and the number defined in the chemical component dictionary. LLDF column lists the quality of electron density of the group with respect to its neighbouring residues in protein, DNA or RNA chains. The B-factors column lists the minimum, median, 95th percentile and maximum values of B factors of atoms in the group. The column labelled ‘Q< 0.9’ lists the number of atoms with occupancy less than 0.9.

Mol	Type	Chain	Res	Atoms	RSCC	RSR	LLDF	B-factors(\AA^2)	Q<0.9
5	EDO	B	615	4/4	0.97	0.18	17.09	32,38,38,39	0
5	EDO	A	611	4/4	0.92	0.19	13.86	35,42,51,54	0
5	EDO	A	610	4/4	0.89	0.17	12.66	47,49,54,54	0
5	EDO	B	616	4/4	0.93	0.19	12.52	46,51,58,64	0
5	EDO	C	611	4/4	0.83	0.18	11.62	41,48,51,52	0
5	EDO	B	612	4/4	0.92	0.12	10.73	38,41,41,42	0
5	EDO	B	614	4/4	0.93	0.24	9.24	32,41,53,59	0
3	UDP	C	603	15/25	0.82	0.27	8.91	42,54,63,64	15
5	EDO	A	612	4/4	0.86	0.18	8.14	35,44,48,52	0
5	EDO	A	613	4/4	0.94	0.14	7.89	38,41,43,45	0
5	EDO	B	610	4/4	0.92	0.12	7.54	31,37,46,50	0
5	EDO	C	609	4/4	0.90	0.12	7.26	45,47,51,52	0
5	EDO	A	614	4/4	0.95	0.19	7.05	43,50,56,64	0
5	EDO	C	615	4/4	0.97	0.09	6.83	47,51,56,60	0
3	UDP	D	602	25/25	0.88	0.16	6.52	33,48,113,115	25
3	UDP	C	602	25/25	0.88	0.14	6.20	31,50,116,118	25
5	EDO	C	613	4/4	0.92	0.12	5.75	42,48,52,56	0
4	SO4	B	608	5/5	0.98	0.15	5.36	35,44,47,48	5
5	EDO	B	611	4/4	0.94	0.13	5.17	37,39,41,42	0
3	UDP	B	602	25/25	0.88	0.17	4.87	22,43,97,99	25
3	UDP	A	602	25/25	0.86	0.21	4.30	32,53,111,111	25
5	EDO	C	616	4/4	0.94	0.15	3.67	48,56,59,61	0
4	SO4	D	606	5/5	0.92	0.17	3.27	48,52,53,56	5
5	EDO	D	610	4/4	0.95	0.10	3.19	38,41,44,47	0
4	SO4	A	607	5/5	0.95	0.17	2.74	34,40,53,55	5
5	EDO	C	612	4/4	0.83	0.14	2.69	43,48,49,52	0
5	EDO	D	608	4/4	0.94	0.10	2.28	45,48,49,49	0
5	EDO	B	613	4/4	0.97	0.10	2.15	39,40,40,42	0
5	EDO	A	609	4/4	0.85	0.12	1.87	36,41,43,43	0
3	UDP	A	603	17/25	0.89	0.15	1.86	29,45,66,69	17
3	UDP	B	603	17/25	0.91	0.14	1.83	23,44,58,60	17
5	EDO	C	614	4/4	0.93	0.10	1.63	35,43,45,47	0
5	EDO	D	609	4/4	0.96	0.12	1.49	38,44,48,48	0
2	FDA	C	601	53/53	0.96	0.10	1.47	21,28,34,38	0
4	SO4	A	608	5/5	0.88	0.16	1.29	76,80,83,84	5
5	EDO	C	608	4/4	0.93	0.10	1.22	33,40,40,44	0
5	EDO	D	611	4/4	0.95	0.12	1.19	47,52,53,58	0
2	FDA	A	601	53/53	0.98	0.09	1.11	14,21,28,39	0
2	FDA	D	601	53/53	0.96	0.10	0.68	19,27,33,34	0
2	FDA	B	601	53/53	0.98	0.09	0.56	13,21,27,39	0
4	SO4	A	605	5/5	0.79	0.28	-	83,85,87,87	5
4	SO4	D	604	5/5	0.95	0.16	-	64,69,71,74	5

Continued on next page...

Continued from previous page...

Mol	Type	Chain	Res	Atoms	RSCC	RSR	LLDF	B-factors(\AA^2)	Q<0.9
4	SO4	B	606	5/5	0.92	0.15	-	74,81,83,83	0
5	EDO	B	609	4/4	0.97	0.10	-	39,42,43,43	0
5	EDO	D	607	4/4	0.94	0.07	-	33,33,37,37	0
4	SO4	C	607	5/5	0.75	0.20	-	88,94,96,96	0
4	SO4	C	606	5/5	0.92	0.19	-	66,67,68,69	5
4	SO4	C	604	5/5	0.98	0.07	-	34,35,43,47	5
4	SO4	C	605	5/5	0.88	0.19	-	51,52,57,65	5
4	SO4	D	605	5/5	0.89	0.16	-	55,60,61,62	5
4	SO4	A	604	5/5	0.96	0.12	-	38,51,56,59	5
4	SO4	B	607	5/5	0.93	0.24	-	77,78,79,80	5
4	SO4	A	606	5/5	0.91	0.14	-	83,83,84,85	0
4	SO4	B	605	5/5	0.88	0.16	-	79,81,81,85	5
4	SO4	D	603	5/5	0.97	0.08	-	31,36,43,46	5
4	SO4	B	604	5/5	0.98	0.07	-	49,52,55,59	0
5	EDO	C	610	4/4	0.93	0.11	-	49,54,56,61	0

6.5 Other polymers [i](#)

There are no such residues in this entry.