



wwPDB X-ray Structure Validation Summary Report ⓘ

Feb 13, 2017 – 10:41 pm GMT

PDB ID : 3UBO
Title : The crystal structure of adenosine kinase from Sinorhizobium meliloti
Authors : Zhang, Z.; Chamala, S.; Evans, B.; Foti, R.; Gizzi, A.; Hillerich, B.; Kar, A.; LaFleur, J.; Seidel, R.; Villigas, G.; Zencheck, W.; Almo, S.C.; Swaminathan, S.; New York Structural Genomics Research Consortium (NYSGRG)
Deposited on : 2011-10-24
Resolution : 2.60 Å(reported)

This is a wwPDB X-ray Structure Validation Summary Report for a publicly released PDB entry.

We welcome your comments at validation@mail.wwpdb.org

A user guide is available at

<http://wwpdb.org/validation/2016/XrayValidationReportHelp>

with specific help available everywhere you see the ⓘ symbol.

The following versions of software and data (see [references ⓘ](#)) were used in the production of this report:

MolProbity	:	4.02b-467
Mogul	:	1.7.2 (RC1), CSD as538be (2017)
Xtriage (Phenix)	:	1.9-1692
EDS	:	trunk28620
Percentile statistics	:	20161228.v01 (using entries in the PDB archive December 28th 2016)
Refmac	:	5.8.0135
CCP4	:	6.5.0
Ideal geometry (proteins)	:	Engh & Huber (2001)
Ideal geometry (DNA, RNA)	:	Parkinson et al. (1996)
Validation Pipeline (wwPDB-VP)	:	recalc28949

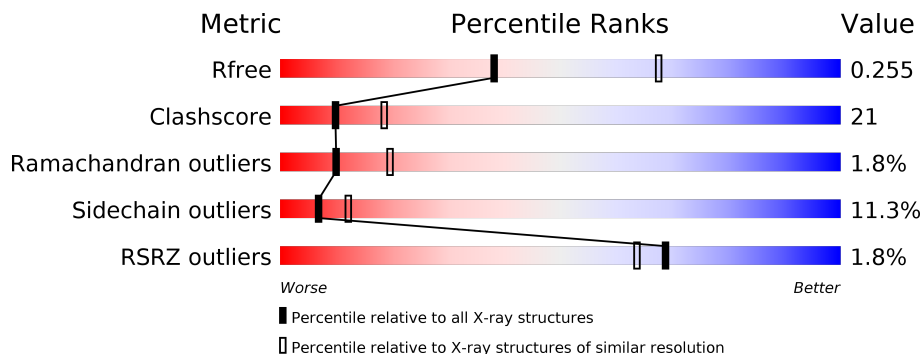
1 Overall quality at a glance

The following experimental techniques were used to determine the structure:

X-RAY DIFFRACTION



The reported resolution of this entry is 2.60 Å.

Percentile scores (ranging between 0-100) for global validation metrics of the entry are shown in the following graphic. The table shows the number of entries on which the scores are based.



Metric	Whole archive (#Entries)	Similar resolution (#Entries, resolution range(Å))
R_{free}	100719	2542 (2.60-2.60)
Clashscore	112137	2895 (2.60-2.60)
Ramachandran outliers	110173	2848 (2.60-2.60)
Sidechain outliers	110143	2848 (2.60-2.60)
RSRZ outliers	101464	2550 (2.60-2.60)

The table below summarises the geometric issues observed across the polymeric chains and their fit to the electron density. The red, orange, yellow and green segments on the lower bar indicate the fraction of residues that contain outliers for ≥ 3 , 2, 1 and 0 types of geometric quality criteria. A grey segment represents the fraction of residues that are not modelled. The numeric value for each fraction is indicated below the corresponding segment, with a dot representing fractions $\leq 5\%$. The upper red bar (where present) indicates the fraction of residues that have poor fit to the electron density. The numeric value is given above the bar.

Mol	Chain	Length	Quality of chain
1	A	354	
1	B	354	

2 Entry composition

There are 4 unique types of molecules in this entry. The entry contains 5120 atoms, of which 0 are hydrogens and 0 are deuteriums.

In the tables below, the ZeroOcc column contains the number of atoms modelled with zero occupancy, the AltConf column contains the number of residues with at least one atom in alternate conformation and the Trace column contains the number of residues modelled with at most 2 atoms.

- Molecule 1 is a protein called adenosine kinase.

Mol	Chain	Residues	Atoms						ZeroOcc	AltConf	Trace
1	A	338	Total	C	N	O	S	Se	0	0	0
			2538	1585	448	494	5	6			
1	B	327	Total	C	N	O	S	Se	0	0	0
			2444	1524	430	479	5	6			

There are 48 discrepancies between the modelled and reference sequences:

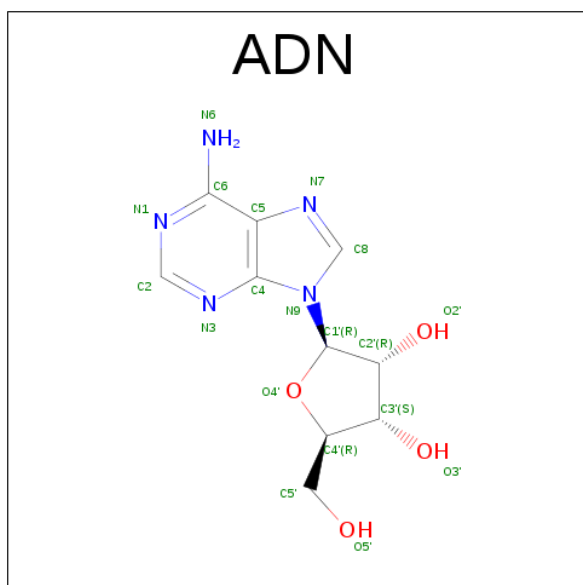
Chain	Residue	Modelled	Actual	Comment	Reference
A	-1	MSE	-	EXPRESSION TAG	UNP Q92T17
A	0	VAL	-	EXPRESSION TAG	UNP Q92T17
A	331	ALA	-	EXPRESSION TAG	UNP Q92T17
A	332	GLU	-	EXPRESSION TAG	UNP Q92T17
A	333	ASN	-	EXPRESSION TAG	UNP Q92T17
A	334	LEU	-	EXPRESSION TAG	UNP Q92T17
A	335	TYR	-	EXPRESSION TAG	UNP Q92T17
A	336	PHE	-	EXPRESSION TAG	UNP Q92T17
A	337	GLN	-	EXPRESSION TAG	UNP Q92T17
A	338	SER	-	EXPRESSION TAG	UNP Q92T17
A	339	HIS	-	EXPRESSION TAG	UNP Q92T17
A	340	HIS	-	EXPRESSION TAG	UNP Q92T17
A	341	HIS	-	EXPRESSION TAG	UNP Q92T17
A	342	HIS	-	EXPRESSION TAG	UNP Q92T17
A	343	HIS	-	EXPRESSION TAG	UNP Q92T17
A	344	HIS	-	EXPRESSION TAG	UNP Q92T17
A	345	TRP	-	EXPRESSION TAG	UNP Q92T17
A	346	SER	-	EXPRESSION TAG	UNP Q92T17
A	347	HIS	-	EXPRESSION TAG	UNP Q92T17
A	348	PRO	-	EXPRESSION TAG	UNP Q92T17
A	349	GLN	-	EXPRESSION TAG	UNP Q92T17
A	350	PHE	-	EXPRESSION TAG	UNP Q92T17
A	351	GLU	-	EXPRESSION TAG	UNP Q92T17
A	352	LYS	-	EXPRESSION TAG	UNP Q92T17
B	-1	MSE	-	EXPRESSION TAG	UNP Q92T17

Continued on next page...

Continued from previous page...

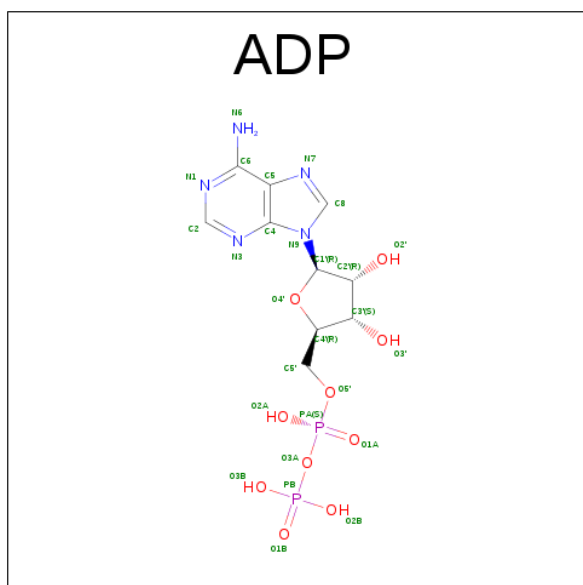
Chain	Residue	Modelled	Actual	Comment	Reference
B	0	VAL	-	EXPRESSION TAG	UNP Q92T17
B	331	ALA	-	EXPRESSION TAG	UNP Q92T17
B	332	GLU	-	EXPRESSION TAG	UNP Q92T17
B	333	ASN	-	EXPRESSION TAG	UNP Q92T17
B	334	LEU	-	EXPRESSION TAG	UNP Q92T17
B	335	TYR	-	EXPRESSION TAG	UNP Q92T17
B	336	PHE	-	EXPRESSION TAG	UNP Q92T17
B	337	GLN	-	EXPRESSION TAG	UNP Q92T17
B	338	SER	-	EXPRESSION TAG	UNP Q92T17
B	339	HIS	-	EXPRESSION TAG	UNP Q92T17
B	340	HIS	-	EXPRESSION TAG	UNP Q92T17
B	341	HIS	-	EXPRESSION TAG	UNP Q92T17
B	342	HIS	-	EXPRESSION TAG	UNP Q92T17
B	343	HIS	-	EXPRESSION TAG	UNP Q92T17
B	344	HIS	-	EXPRESSION TAG	UNP Q92T17
B	345	TRP	-	EXPRESSION TAG	UNP Q92T17
B	346	SER	-	EXPRESSION TAG	UNP Q92T17
B	347	HIS	-	EXPRESSION TAG	UNP Q92T17
B	348	PRO	-	EXPRESSION TAG	UNP Q92T17
B	349	GLN	-	EXPRESSION TAG	UNP Q92T17
B	350	PHE	-	EXPRESSION TAG	UNP Q92T17
B	351	GLU	-	EXPRESSION TAG	UNP Q92T17
B	352	LYS	-	EXPRESSION TAG	UNP Q92T17

- Molecule 2 is ADENOSINE (three-letter code: ADN) (formula: $C_{10}H_{13}N_5O_4$).



Mol	Chain	Residues	Atoms				ZeroOcc	AltConf
2	A	1	Total	C	N	O	0	0
			19	10	5	4		
2	B	1	Total	C	N	O	0	0
			19	10	5	4		

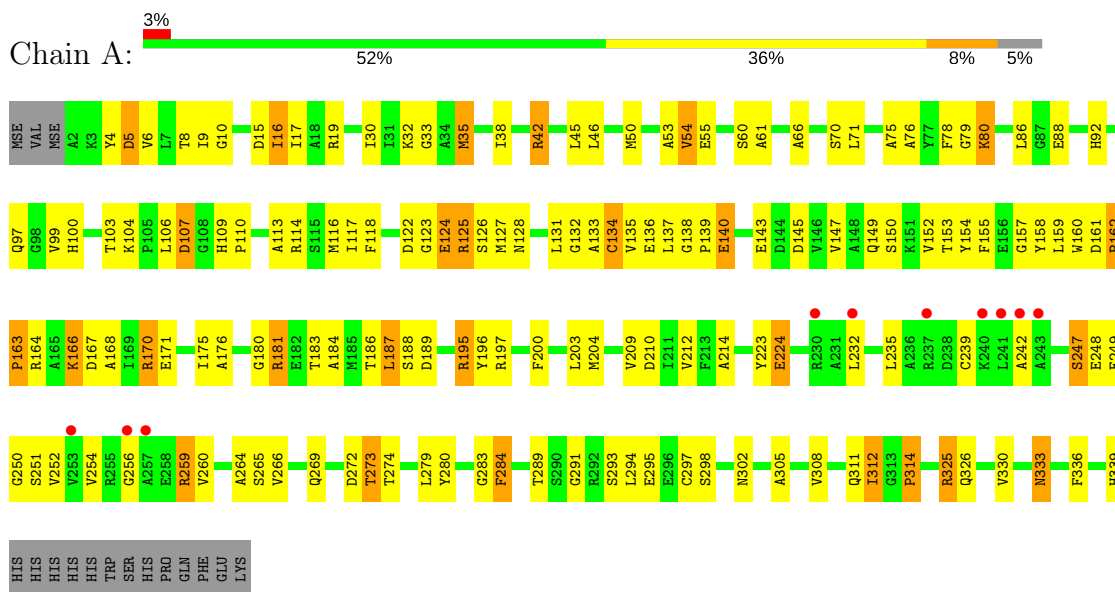
- Molecule 3 is ADENOSINE-5'-DIPHOSPHATE (three-letter code: ADP) (formula: $C_{10}H_{15}N_5O_{10}P_2$).



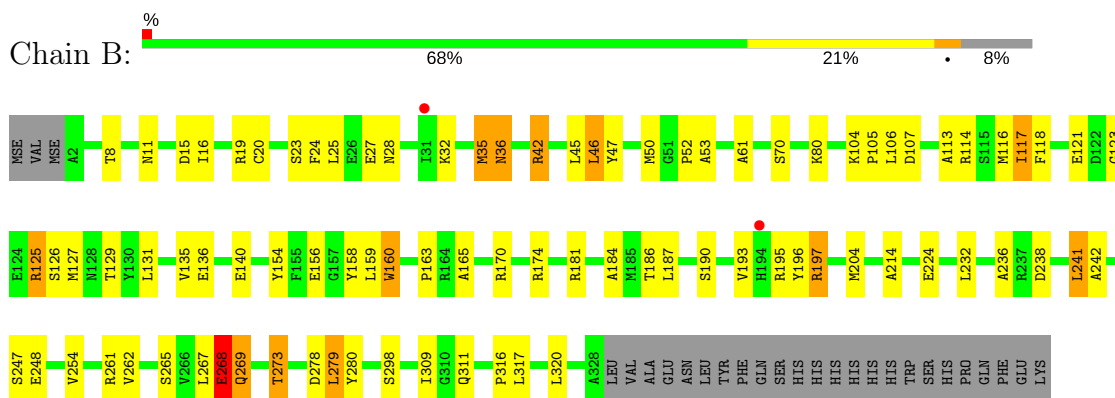
3 Residue-property plots

These plots are drawn for all protein, RNA and DNA chains in the entry. The first graphic for a chain summarises the proportions of the various outlier classes displayed in the second graphic. The second graphic shows the sequence view annotated by issues in geometry and electron density. Residues are color-coded according to the number of geometric quality criteria for which they contain at least one outlier: green = 0, yellow = 1, orange = 2 and red = 3 or more. A red dot above a residue indicates a poor fit to the electron density ($RSRZ > 2$). Stretches of 2 or more consecutive residues without any outlier are shown as a green connector. Residues present in the sample, but not in the model, are shown in grey.

• Molecule 1: adenosine kinase



• Molecule 1: adenosine kinase



4 Data and refinement statistics

Property	Value	Source
Space group	P 31 2 1	Depositor
Cell constants a, b, c, α , β , γ	156.31Å 156.31Å 89.08Å 90.00° 90.00° 120.00°	Depositor
Resolution (Å)	45.12 – 2.60 45.12 – 2.60	Depositor EDS
% Data completeness (in resolution range)	97.0 (45.12-2.60) 100.0 (45.12-2.60)	Depositor EDS
R_{merge}	0.07	Depositor
R_{sym}	(Not available)	Depositor
$\langle I/\sigma(I) \rangle$ ¹	4.65 (at 2.61Å)	Xtriage
Refinement program	PHENIX (phenix.refine)	Depositor
R, R_{free}	0.235 , 0.267 0.221 , 0.255	Depositor DCC
R_{free} test set	1940 reflections (5.01%)	DCC
Wilson B-factor (Å ²)	54.0	Xtriage
Anisotropy	0.607	Xtriage
Bulk solvent k_{sol} (e/Å ³), B_{sol} (Å ²)	0.31 , 35.3	EDS
L-test for twinning ²	$\langle L \rangle = 0.48$, $\langle L^2 \rangle = 0.31$	Xtriage
Estimated twinning fraction	0.036 for -h,-k,l	Xtriage
F_o, F_c correlation	0.94	EDS
Total number of atoms	5120	wwPDB-VP
Average B, all atoms (Å ²)	63.0	wwPDB-VP

Xtriage's analysis on translational NCS is as follows: *The largest off-origin peak in the Patterson function is 2.45% of the height of the origin peak. No significant pseudotranslation is detected.*

¹Intensities estimated from amplitudes.

²Theoretical values of $\langle |L| \rangle$, $\langle L^2 \rangle$ for acentric reflections are 0.5, 0.333 respectively for untwinned datasets, and 0.375, 0.2 for perfectly twinned datasets.

5 Model quality

5.1 Standard geometry

Bond lengths and bond angles in the following residue types are not validated in this section: ADN, ADP

The Z score for a bond length (or angle) is the number of standard deviations the observed value is removed from the expected value. A bond length (or angle) with $|Z| > 5$ is considered an outlier worth inspection. RMSZ is the root-mean-square of all Z scores of the bond lengths (or angles).

Mol	Chain	Bond lengths		Bond angles	
		RMSZ	$\# Z > 5$	RMSZ	$\# Z > 5$
1	A	1.12	2/2573 (0.1%)	1.04	5/3476 (0.1%)
1	B	0.98	0/2476	0.96	2/3344 (0.1%)
All	All	1.06	2/5049 (0.0%)	1.00	7/6820 (0.1%)

All (2) bond length outliers are listed below:

Mol	Chain	Res	Type	Atoms	Z	Observed(Å)	Ideal(Å)
1	A	195	ARG	CG-CD	5.66	1.66	1.51
1	A	336	PHE	CE2-CZ	5.47	1.47	1.37

The worst 5 of 7 bond angle outliers are listed below:

Mol	Chain	Res	Type	Atoms	Z	Observed(°)	Ideal(°)
1	B	279	LEU	CA-CB-CG	-5.77	102.03	115.30
1	A	5	ASP	CB-CG-OD1	-5.60	113.26	118.30
1	B	241	LEU	CB-CG-CD1	-5.39	101.83	111.00
1	A	189	ASP	CB-CG-OD1	5.38	123.14	118.30
1	A	15	ASP	CB-CG-OD2	5.29	123.06	118.30

There are no chirality outliers.

There are no planarity outliers.

5.2 Too-close contacts

In the following table, the Non-H and H(model) columns list the number of non-hydrogen atoms and hydrogen atoms in the chain respectively. The H(added) column lists the number of hydrogen atoms added and optimized by MolProbity. The Clashes column lists the number of clashes within the asymmetric unit, whereas Symm-Clashes lists symmetry related clashes.

Mol	Chain	Non-H	H(model)	H(added)	Clashes	Symm-Clashes
1	A	2538	0	2482	136	0
1	B	2444	0	2391	79	0
2	A	19	0	13	5	0
2	B	19	0	12	6	0
3	A	27	0	12	4	0
3	B	27	0	12	3	0
4	A	21	0	0	3	0
4	B	25	0	0	1	0
All	All	5120	0	4922	213	0

The all-atom clashscore is defined as the number of clashes found per 1000 atoms (including hydrogen atoms). The all-atom clashscore for this structure is 21.

The worst 5 of 213 close contacts within the same asymmetric unit are listed below, sorted by their clash magnitude.

Atom-1	Atom-2	Interatomic distance (Å)	Clash overlap (Å)
1:A:35:MSE:O	1:A:35:MSE:HG3	1.39	1.14
1:A:116:MSE:HA	1:A:116:MSE:HE3	1.32	1.09
1:A:50:MSE:HE3	1:A:53:ALA:HB2	1.12	1.08
1:A:50:MSE:CE	1:A:53:ALA:HB2	1.90	1.02
1:B:50:MSE:HE3	1:B:53:ALA:HB2	1.42	0.98

There are no symmetry-related clashes.

5.3 Torsion angles [i](#)

5.3.1 Protein backbone [i](#)

In the following table, the Percentiles column shows the percent Ramachandran outliers of the chain as a percentile score with respect to all X-ray entries followed by that with respect to entries of similar resolution.

The Analysed column shows the number of residues for which the backbone conformation was analysed, and the total number of residues.

Mol	Chain	Analysed	Favoured	Allowed	Outliers	Percentiles	
1	A	336/354 (95%)	293 (87%)	35 (10%)	8 (2%)	7	12
1	B	325/354 (92%)	304 (94%)	17 (5%)	4 (1%)	15	32
All	All	661/708 (93%)	597 (90%)	52 (8%)	12 (2%)	10	19

5 of 12 Ramachandran outliers are listed below:

Mol	Chain	Res	Type
1	A	291	GLY
1	A	134	CYS
1	B	197	ARG
1	B	224	GLU
1	A	224	GLU

5.3.2 Protein sidechains ⓘ

In the following table, the Percentiles column shows the percent sidechain outliers of the chain as a percentile score with respect to all X-ray entries followed by that with respect to entries of similar resolution.

The Analysed column shows the number of residues for which the sidechain conformation was analysed, and the total number of residues.

Mol	Chain	Analysed	Rotameric	Outliers	Percentiles	
1	A	257/268 (96%)	219 (85%)	38 (15%)	3	6
1	B	247/268 (92%)	228 (92%)	19 (8%)	15	29
All	All	504/536 (94%)	447 (89%)	57 (11%)	7	12

5 of 57 residues with a non-rotameric sidechain are listed below:

Mol	Chain	Res	Type
1	A	266	VAL
1	A	295	GLU
1	B	261	ARG
1	A	269	GLN
1	A	279	LEU

Some sidechains can be flipped to improve hydrogen bonding and reduce clashes. 5 of 6 such sidechains are listed below:

Mol	Chain	Res	Type
1	A	302	ASN
1	B	311	GLN
1	B	269	GLN
1	A	177	HIS
1	B	302	ASN

5.3.3 RNA ⓘ

There are no RNA molecules in this entry.

5.4 Non-standard residues in protein, DNA, RNA chains [i](#)

There are no non-standard protein/DNA/RNA residues in this entry.

5.5 Carbohydrates [i](#)

There are no carbohydrates in this entry.

5.6 Ligand geometry [i](#)

4 ligands are modelled in this entry.

In the following table, the Counts columns list the number of bonds (or angles) for which Mogul statistics could be retrieved, the number of bonds (or angles) that are observed in the model and the number of bonds (or angles) that are defined in the chemical component dictionary. The Link column lists molecule types, if any, to which the group is linked. The Z score for a bond length (or angle) is the number of standard deviations the observed value is removed from the expected value. A bond length (or angle) with $|Z| > 2$ is considered an outlier worth inspection. RMSZ is the root-mean-square of all Z scores of the bond lengths (or angles).

Mol	Type	Chain	Res	Link	Bond lengths			Bond angles		
					Counts	RMSZ	# $ Z > 2$	Counts	RMSZ	# $ Z > 2$
2	ADN	A	353	-	18,21,21	2.89	8 (44%)	17,31,31	3.00	5 (29%)
3	ADP	A	354	-	25,29,29	3.11	13 (52%)	24,45,45	2.60	8 (33%)
2	ADN	B	353	-	18,21,21	3.58	10 (55%)	17,31,31	3.12	5 (29%)
3	ADP	B	354	-	25,29,29	2.72	11 (44%)	24,45,45	2.77	5 (20%)

In the following table, the Chirals column lists the number of chiral outliers, the number of chiral centers analysed, the number of these observed in the model and the number defined in the chemical component dictionary. Similar counts are reported in the Torsion and Rings columns. '-' means no outliers of that kind were identified.

Mol	Type	Chain	Res	Link	Chirals	Torsions	Rings
2	ADN	A	353	-	-	0/2/22/22	0/3/3/3
3	ADP	A	354	-	-	0/12/32/32	0/3/3/3
2	ADN	B	353	-	-	0/2/22/22	0/3/3/3
3	ADP	B	354	-	-	0/12/32/32	0/3/3/3

The worst 5 of 42 bond length outliers are listed below:

Mol	Chain	Res	Type	Atoms	Z	Observed(Å)	Ideal(Å)
2	B	353	ADN	C2'-C1'	-4.45	1.46	1.53
3	B	354	ADP	C2'-C1'	-4.24	1.46	1.53

Continued on next page...

Continued from previous page...

Mol	Chain	Res	Type	Atoms	Z	Observed(Å)	Ideal(Å)
2	A	353	ADN	C2'-C1'	-3.46	1.48	1.53
2	B	353	ADN	O4'-C1'	-2.14	1.38	1.41
3	A	354	ADP	O4'-C1'	2.14	1.44	1.41

The worst 5 of 23 bond angle outliers are listed below:

Mol	Chain	Res	Type	Atoms	Z	Observed(°)	Ideal(°)
3	B	354	ADP	N3-C2-N1	-11.84	118.54	128.86
3	A	354	ADP	N3-C2-N1	-9.74	120.38	128.86
2	B	353	ADN	N3-C2-N1	-7.37	122.44	128.86
2	A	353	ADN	N3-C2-N1	-6.23	123.43	128.86
2	A	353	ADN	C4'-O4'-C1'	-6.23	103.14	109.77

There are no chirality outliers.

There are no torsion outliers.

There are no ring outliers.

4 monomers are involved in 18 short contacts:

Mol	Chain	Res	Type	Clashes	Symm-Clashes
2	A	353	ADN	5	0
3	A	354	ADP	4	0
2	B	353	ADN	6	0
3	B	354	ADP	3	0

5.7 Other polymers [i](#)

There are no such residues in this entry.

5.8 Polymer linkage issues [i](#)

There are no chain breaks in this entry.

6 Fit of model and data [i](#)

6.1 Protein, DNA and RNA chains [i](#)

In the following table, the column labelled ‘#RSRZ> 2’ contains the number (and percentage) of RSRZ outliers, followed by percent RSRZ outliers for the chain as percentile scores relative to all X-ray entries and entries of similar resolution. The OWAB column contains the minimum, median, 95th percentile and maximum values of the occupancy-weighted average B-factor per residue. The column labelled ‘Q< 0.9’ lists the number of (and percentage) of residues with an average occupancy less than 0.9.

Mol	Chain	Analysed	<RSRZ>	#RSRZ>2	OWAB(Å ²)	Q<0.9
1	A	332/354 (93%)	-0.15	10 (3%) 51 43	44, 63, 82, 95	0
1	B	321/354 (90%)	-0.19	2 (0%) 89 88	46, 63, 82, 92	0
All	All	653/708 (92%)	-0.17	12 (1%) 69 63	44, 63, 82, 95	0

The worst 5 of 12 RSRZ outliers are listed below:

Mol	Chain	Res	Type	RSRZ
1	A	242	ALA	2.6
1	A	243	ALA	2.4
1	B	31	ILE	2.4
1	A	241	LEU	2.4
1	A	237	ARG	2.2

6.2 Non-standard residues in protein, DNA, RNA chains [i](#)

There are no non-standard protein/DNA/RNA residues in this entry.

6.3 Carbohydrates [i](#)

There are no carbohydrates in this entry.

6.4 Ligands [i](#)

In the following table, the Atoms column lists the number of modelled atoms in the group and the number defined in the chemical component dictionary. LLDF column lists the quality of electron density of the group with respect to its neighbouring residues in protein, DNA or RNA chains. The B-factors column lists the minimum, median, 95th percentile and maximum values of B factors of atoms in the group. The column labelled ‘Q< 0.9’ lists the number of atoms with occupancy less than 0.9.

Mol	Type	Chain	Res	Atoms	RSCC	RSR	LLDF	B-factors(\AA^2)	Q<0.9
2	ADN	A	353	19/19	0.96	0.21	1.92	55,59,62,62	0
3	ADP	A	354	27/27	0.93	0.16	1.07	67,70,75,78	0
3	ADP	B	354	27/27	0.95	0.17	0.40	62,69,74,75	0
2	ADN	B	353	19/19	0.93	0.17	-0.09	56,63,65,65	0

6.5 Other polymers [i](#)

There are no such residues in this entry.