



Full wwPDB X-ray Structure Validation Report ⓘ

Jun 5, 2017 – 03:46 PM EDT

PDB ID : 4UCI
Title : X-ray structure and activities of an essential Mononegavirales L- protein domain
Authors : Paesen, G.C.; Collet, A.; Sallamand, C.; Debart, F.; Vasseur, J.J.; Canard, B.; Decroly, E.; Grimes, J.M.
Deposited on : 2014-12-03
Resolution : 2.21 Å(reported)

This is a Full wwPDB X-ray Structure Validation Report for a publicly released PDB entry.

We welcome your comments at validation@mail.wwpdb.org

A user guide is available at

<http://wwpdb.org/validation/2016/XrayValidationReportHelp>

with specific help available everywhere you see the ⓘ symbol.

The following versions of software and data (see [references ⓘ](#)) were used in the production of this report:

MolProbity : 4.02b-467
Mogul : 1.7.2 (RC1), CSD as538be (2017)
Xtriage (Phenix) : 1.9-1692
EDS : rb-20029077
Percentile statistics : 20161228.v01 (using entries in the PDB archive December 28th 2016)
Refmac : 5.8.0135
CCP4 : 6.5.0
Ideal geometry (proteins) : Engh & Huber (2001)
Ideal geometry (DNA, RNA) : Parkinson et al. (1996)
Validation Pipeline (wwPDB-VP) : rb-20029077

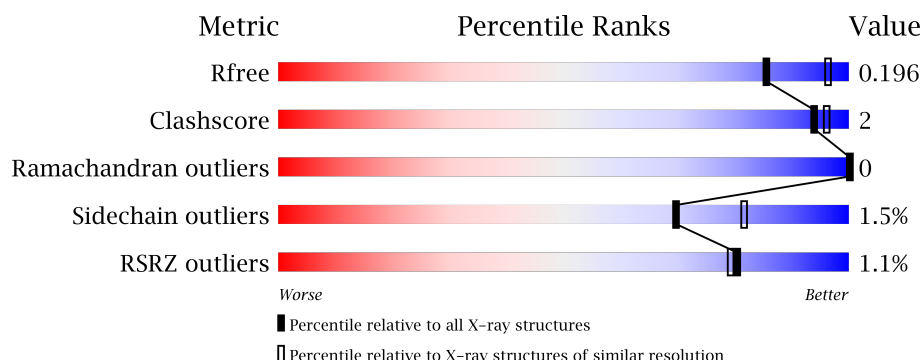
1 Overall quality at a glance

The following experimental techniques were used to determine the structure:

X-RAY DIFFRACTION

The reported resolution of this entry is 2.21 Å.

Percentile scores (ranging between 0-100) for global validation metrics of the entry are shown in the following graphic. The table shows the number of entries on which the scores are based.



Metric	Whole archive (#Entries)	Similar resolution (#Entries, resolution range(Å))
R_{free}	100719	4744 (2.24-2.20)
Clashscore	112137	5509 (2.24-2.20)
Ramachandran outliers	110173	5427 (2.24-2.20)
Sidechain outliers	110143	5428 (2.24-2.20)
RSRZ outliers	101464	4776 (2.24-2.20)

The table below summarises the geometric issues observed across the polymeric chains and their fit to the electron density. The red, orange, yellow and green segments on the lower bar indicate the fraction of residues that contain outliers for ≥ 3 , 2, 1 and 0 types of geometric quality criteria. A grey segment represents the fraction of residues that are not modelled. The numeric value for each fraction is indicated below the corresponding segment, with a dot representing fractions $\leq 5\%$. The upper red bar (where present) indicates the fraction of residues that have poor fit to the electron density. The numeric value is given above the bar.

Mol	Chain	Length	Quality of chain
1	A	415	<div> <div style="width: 100%; height: 10px; position: relative;"> <div style="position: absolute; top: -10px; left: 0; width: 100%; text-align: center;">%</div> <div style="position: absolute; top: 0; left: 0; width: 100%; height: 100%; background: linear-gradient(to right, red 0%, red 1%, orange 1%, orange 82%, yellow 82%, yellow 87%, grey 87%, grey 100%);"></div> <div style="position: absolute; bottom: -10px; left: 0; width: 100%; text-align: center;">82% 5% 13%</div> </div> </div>
1	B	415	<div> <div style="width: 100%; height: 10px; position: relative;"> <div style="position: absolute; top: -10px; left: 0; width: 100%; text-align: center;">%</div> <div style="position: absolute; top: 0; left: 0; width: 100%; height: 100%; background: linear-gradient(to right, red 0%, red 1%, orange 1%, orange 84%, yellow 84%, yellow 89%, grey 89%, grey 100%);"></div> <div style="position: absolute; bottom: -10px; left: 0; width: 100%; text-align: center;">84% 5% 11%</div> </div> </div>

The following table lists non-polymeric compounds, carbohydrate monomers and non-standard residues in protein, DNA, RNA chains that are outliers for geometric or electron-density-fit criteria:

Mol	Type	Chain	Res	Chirality	Geometry	Clashes	Electron density
2	ZN	A	2408	-	-	-	X
2	ZN	B	2408	-	-	-	X
4	GTP	A	2410	-	-	-	X
4	GTP	B	2410	-	-	-	X
5	GOL	A	2411	-	-	-	X
5	GOL	A	2412	-	-	-	X
5	GOL	B	2411	-	-	-	X
5	GOL	B	2412	-	-	-	X
5	GOL	B	2413	-	-	-	X
5	GOL	B	2414	-	-	-	X
6	ADN	A	2414	-	-	-	X
6	ADN	B	2415	-	-	-	X

2 Entry composition

There are 7 unique types of molecules in this entry. The entry contains 6551 atoms, of which 26 are hydrogens and 0 are deuteriums.

In the tables below, the ZeroOcc column contains the number of atoms modelled with zero occupancy, the AltConf column contains the number of residues with at least one atom in alternate conformation and the Trace column contains the number of residues modelled with at most 2 atoms.

- Molecule 1 is a protein called RNA-DIRECTED RNA POLYMERASE L.

Mol	Chain	Residues	Atoms					ZeroOcc	AltConf	Trace
1	A	361	Total	C	N	O	S	0	0	0
			2937	1889	503	525	20			
1	B	370	Total	C	N	O	S	0	0	0
			3006	1934	514	538	20			

There are 30 discrepancies between the modelled and reference sequences:

Chain	Residue	Modelled	Actual	Comment	Reference
A	1599	MET	-	expression tag	UNP Q6WB93
A	2006	SER	-	expression tag	UNP Q6WB93
A	2007	GLY	-	expression tag	UNP Q6WB93
A	2008	HIS	-	expression tag	UNP Q6WB93
A	2009	HIS	-	expression tag	UNP Q6WB93
A	2010	HIS	-	expression tag	UNP Q6WB93
A	2011	HIS	-	expression tag	UNP Q6WB93
A	2012	HIS	-	expression tag	UNP Q6WB93
A	2013	HIS	-	expression tag	UNP Q6WB93
A	1606	PRO	SER	conflict	UNP Q6WB93
A	1620	GLU	THR	conflict	UNP Q6WB93
A	1860	ASN	SER	conflict	UNP Q6WB93
A	1912	ASN	ASP	conflict	UNP Q6WB93
A	1935	VAL	ILE	conflict	UNP Q6WB93
A	1946	ASN	SER	conflict	UNP Q6WB93
B	1599	MET	-	expression tag	UNP Q6WB93
B	2006	SER	-	expression tag	UNP Q6WB93
B	2007	GLY	-	expression tag	UNP Q6WB93
B	2008	HIS	-	expression tag	UNP Q6WB93
B	2009	HIS	-	expression tag	UNP Q6WB93
B	2010	HIS	-	expression tag	UNP Q6WB93
B	2011	HIS	-	expression tag	UNP Q6WB93
B	2012	HIS	-	expression tag	UNP Q6WB93
B	2013	HIS	-	expression tag	UNP Q6WB93
B	1606	PRO	SER	conflict	UNP Q6WB93

Continued on next page...

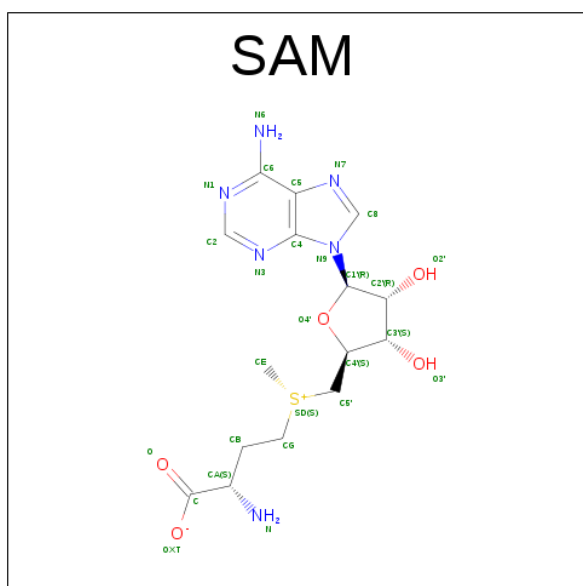
Continued from previous page...

Chain	Residue	Modelled	Actual	Comment	Reference
B	1620	GLU	THR	conflict	UNP Q6WB93
B	1860	ASN	SER	conflict	UNP Q6WB93
B	1912	ASN	ASP	conflict	UNP Q6WB93
B	1935	VAL	ILE	conflict	UNP Q6WB93
B	1946	ASN	SER	conflict	UNP Q6WB93

- Molecule 2 is ZINC ION (three-letter code: ZN) (formula: Zn).

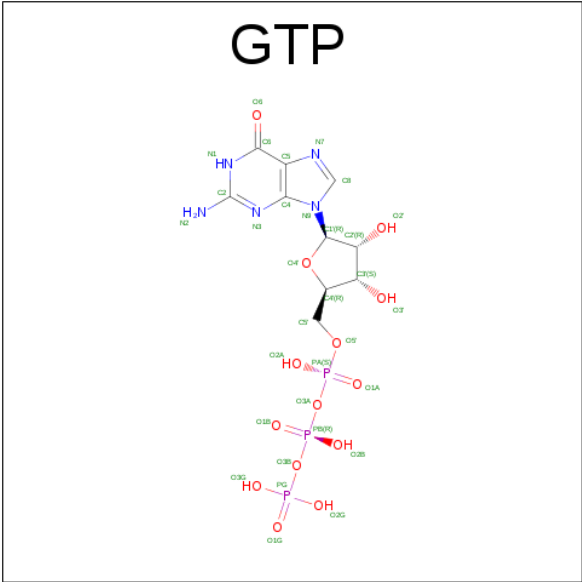
Mol	Chain	Residues	Atoms		ZeroOcc	AltConf
2	B	1	Total	Zn	0	0
			1	1		
2	A	1	Total	Zn	0	0
			1	1		

- Molecule 3 is S-ADENOSYLMETHIONINE (three-letter code: SAM) (formula: C₁₅H₂₂N₆O₅S).



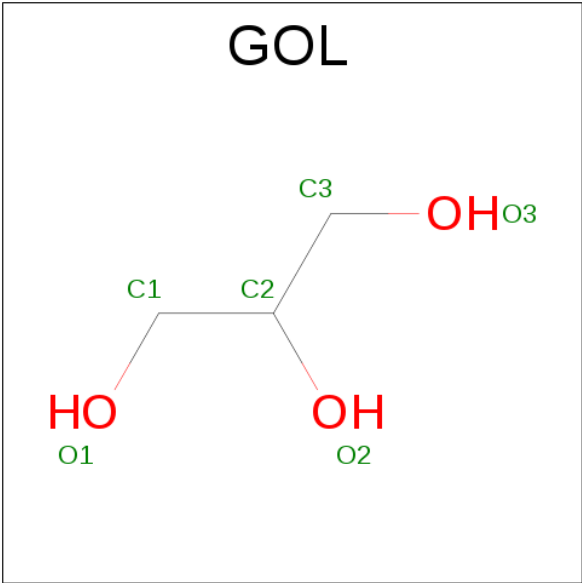
Mol	Chain	Residues	Atoms					ZeroOcc	AltConf
3	A	1	Total	C	N	O	S	0	0
			27	15	6	5	1		
3	B	1	Total	C	N	O	S	0	0
			27	15	6	5	1		

- Molecule 4 is GUANOSINE-5'-TRIPHOSPHATE (three-letter code: GTP) (formula: C₁₀H₁₆N₅O₁₄P₃).



Mol	Chain	Residues	Atoms					ZeroOcc	AltConf
4	A	1	Total	C	N	O	P	0	0
			32	10	5	14	3		
4	B	1	Total	C	N	O	P	0	0
			32	10	5	14	3		

- Molecule 5 is GLYCEROL (three-letter code: GOL) (formula: C₃H₈O₃).



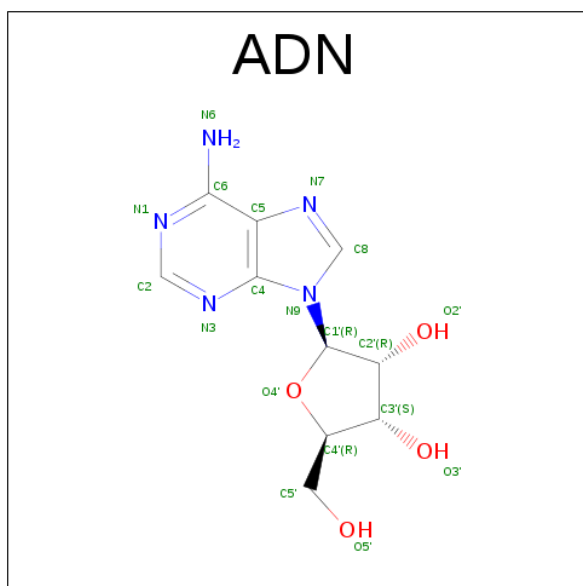
Mol	Chain	Residues	Atoms			ZeroOcc	AltConf
5	A	1	Total	C	O	0	0
			6	3	3		
5	A	1	Total	C	O	0	0
			6	3	3		

Continued on next page...

Continued from previous page...

Mol	Chain	Residues	Atoms			ZeroOcc	AltConf
5	A	1	Total	C	O	0	0
			6	3	3		
5	B	1	Total	C	O	0	0
			6	3	3		
5	B	1	Total	C	O	0	0
			6	3	3		
5	B	1	Total	C	O	0	0
			6	3	3		
5	B	1	Total	C	O	0	0
			6	3	3		

- Molecule 6 is ADENOSINE (three-letter code: ADN) (formula: $C_{10}H_{13}N_5O_4$).



Mol	Chain	Residues	Atoms				ZeroOcc	AltConf
6	A	1	Total	C	H	N	O	
			32	10	13	5	4	0
6	B	1	Total	C	H	N	O	
			32	10	13	5	4	0

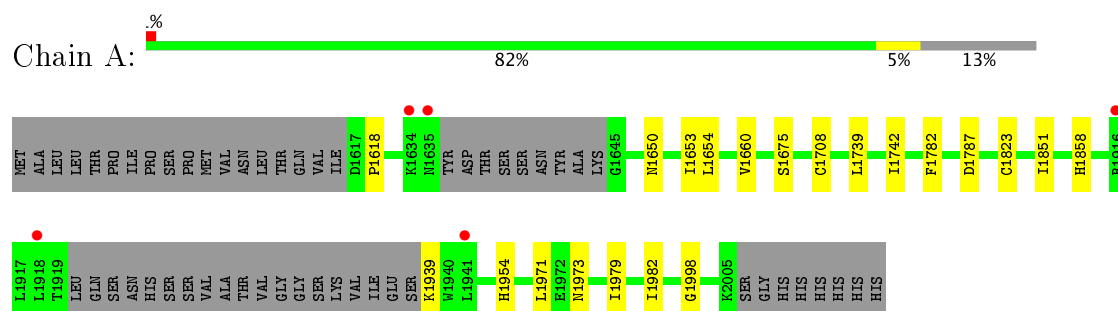
- Molecule 7 is water.

Mol	Chain	Residues	Atoms		ZeroOcc	AltConf
7	A	177	Total	O	0	0
			177	177		
7	B	205	Total	O	0	0
			205	205		

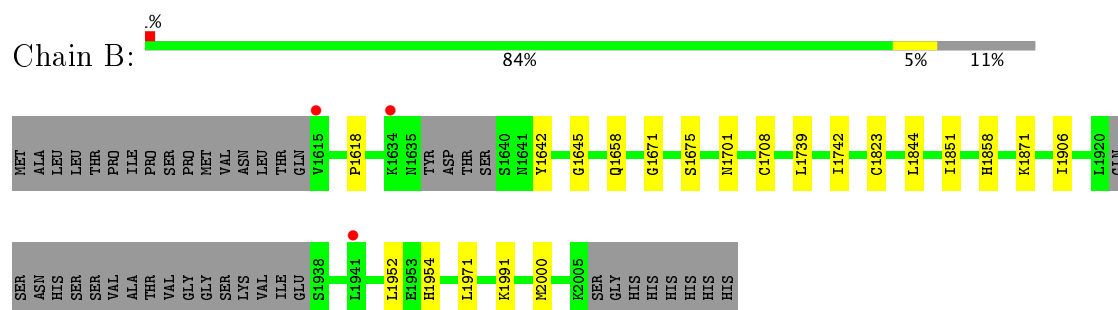
3 Residue-property plots [i](#)

These plots are drawn for all protein, RNA and DNA chains in the entry. The first graphic for a chain summarises the proportions of the various outlier classes displayed in the second graphic. The second graphic shows the sequence view annotated by issues in geometry and electron density. Residues are color-coded according to the number of geometric quality criteria for which they contain at least one outlier: green = 0, yellow = 1, orange = 2 and red = 3 or more. A red dot above a residue indicates a poor fit to the electron density ($RSRZ > 2$). Stretches of 2 or more consecutive residues without any outlier are shown as a green connector. Residues present in the sample, but not in the model, are shown in grey.

• Molecule 1: RNA-DIRECTED RNA POLYMERASE L



• Molecule 1: RNA-DIRECTED RNA POLYMERASE L



4 Data and refinement statistics

Property	Value	Source
Space group	P 21 21 21	Depositor
Cell constants a, b, c, α , β , γ	80.22Å 83.61Å 182.62Å 90.00° 90.00° 90.00°	Depositor
Resolution (Å)	44.20 – 2.21 76.02 – 2.21	Depositor EDS
% Data completeness (in resolution range)	99.9 (44.20-2.21) 99.9 (76.02-2.21)	Depositor EDS
R_{merge}	0.07	Depositor
R_{sym}	(Not available)	Depositor
$\langle I/\sigma(I) \rangle$ ¹	1.55 (at 2.20Å)	Xtriage
Refinement program	BUSTER	Depositor
R, R_{free}	0.190 , 0.201 0.190 , 0.196	Depositor DCC
R_{free} test set	3154 reflections (5.34%)	DCC
Wilson B-factor (Å ²)	58.3	Xtriage
Anisotropy	0.395	Xtriage
Bulk solvent k_{sol} (e/Å ³), B_{sol} (Å ²)	0.33 , 59.2	EDS
L-test for twinning ²	$\langle L \rangle = 0.49$, $\langle L^2 \rangle = 0.32$	Xtriage
Estimated twinning fraction	0.021 for k,h,-l	Xtriage
F_o, F_c correlation	0.96	EDS
Total number of atoms	6551	wwPDB-VP
Average B, all atoms (Å ²)	69.0	wwPDB-VP

Xtriage's analysis on translational NCS is as follows: *The largest off-origin peak in the Patterson function is 3.29% of the height of the origin peak. No significant pseudotranslation is detected.*

¹Intensities estimated from amplitudes.

²Theoretical values of $\langle |L| \rangle$, $\langle L^2 \rangle$ for acentric reflections are 0.5, 0.333 respectively for untwinned datasets, and 0.375, 0.2 for perfectly twinned datasets.

5 Model quality

5.1 Standard geometry

Bond lengths and bond angles in the following residue types are not validated in this section: GTP, GOL, ZN, SAM, ADN

The Z score for a bond length (or angle) is the number of standard deviations the observed value is removed from the expected value. A bond length (or angle) with $|Z| > 5$ is considered an outlier worth inspection. RMSZ is the root-mean-square of all Z scores of the bond lengths (or angles).

Mol	Chain	Bond lengths		Bond angles	
		RMSZ	$\# Z > 5$	RMSZ	$\# Z > 5$
1	A	0.41	0/3000	0.61	0/4043
1	B	0.42	0/3070	0.60	0/4138
All	All	0.41	0/6070	0.60	0/8181

There are no bond length outliers.

There are no bond angle outliers.

There are no chirality outliers.

There are no planarity outliers.

5.2 Too-close contacts

In the following table, the Non-H and H(model) columns list the number of non-hydrogen atoms and hydrogen atoms in the chain respectively. The H(added) column lists the number of hydrogen atoms added and optimized by MolProbity. The Clashes column lists the number of clashes within the asymmetric unit, whereas Symm-Clashes lists symmetry related clashes.

Mol	Chain	Non-H	H(model)	H(added)	Clashes	Symm-Clashes
1	A	2937	0	2980	9	0
1	B	3006	0	3054	13	0
2	A	1	0	0	0	0
2	B	1	0	0	0	0
3	A	27	0	22	0	0
3	B	27	0	22	0	0
4	A	32	0	12	0	0
4	B	32	0	12	2	0
5	A	18	0	24	0	0
5	B	24	0	32	0	0
6	A	19	13	13	0	0

Continued on next page...

Continued from previous page...

Mol	Chain	Non-H	H(model)	H(added)	Clashes	Symm-Clashes
6	B	19	13	13	0	0
7	A	177	0	0	0	0
7	B	205	0	0	0	0
All	All	6525	26	6184	20	0

The all-atom clashscore is defined as the number of clashes found per 1000 atoms (including hydrogen atoms). The all-atom clashscore for this structure is 2.

All (20) close contacts within the same asymmetric unit are listed below, sorted by their clash magnitude.

Atom-1	Atom-2	Interatomic distance (Å)	Clash overlap (Å)
1:B:1844:LEU:O	1:B:1871:LYS:HE2	1.82	0.79
1:B:1671:GLY:H	1:B:1701:ASN:HD22	1.36	0.74
1:B:1952:LEU:HD22	1:B:2000:MET:HE3	1.68	0.73
1:B:1658:GLN:HG3	4:B:2410:GTP:O2A	1.98	0.64
1:B:1739:LEU:HG	1:B:1742:ILE:HD12	1.85	0.59
1:A:1739:LEU:HG	1:A:1742:ILE:HD12	1.84	0.58
1:B:1952:LEU:HD22	1:B:2000:MET:CE	2.36	0.52
1:A:1979:ILE:HD12	1:A:1982:ILE:HD11	1.91	0.51
1:B:1906:ILE:HD13	1:B:2000:MET:HE2	1.93	0.51
1:A:1973:ASN:HB3	1:B:1642:TYR:HB2	1.98	0.46
1:A:1650:ASN:O	1:B:1645:GLY:HA3	2.15	0.46
1:A:1654:LEU:HD13	1:A:1982:ILE:HD13	1.97	0.46
1:A:1660:VAL:O	1:A:1998:GLY:HA3	2.17	0.45
1:A:1618:PRO:HB2	1:A:1708:CYS:HA	1.97	0.45
1:B:1671:GLY:N	1:B:1701:ASN:HD22	2.09	0.45
1:A:1954:HIS:HE1	1:A:1971:LEU:O	2.00	0.44
1:B:1618:PRO:HB2	1:B:1708:CYS:HA	1.98	0.44
1:B:1991:LYS:HE3	4:B:2410:GTP:C5	2.52	0.44
1:B:1954:HIS:HE1	1:B:1971:LEU:O	2.03	0.41
1:A:1782:PHE:HB3	1:A:1787:ASP:HB2	2.03	0.41

There are no symmetry-related clashes.

5.3 Torsion angles ⓘ

5.3.1 Protein backbone ⓘ

In the following table, the Percentiles column shows the percent Ramachandran outliers of the chain as a percentile score with respect to all X-ray entries followed by that with respect to entries of similar resolution.

The Analysed column shows the number of residues for which the backbone conformation was analysed, and the total number of residues.

Mol	Chain	Analysed	Favoured	Allowed	Outliers	Percentiles	
1	A	355/415 (86%)	348 (98%)	7 (2%)	0	100	100
1	B	364/415 (88%)	357 (98%)	7 (2%)	0	100	100
All	All	719/830 (87%)	705 (98%)	14 (2%)	0	100	100

There are no Ramachandran outliers to report.

5.3.2 Protein sidechains ⓘ

In the following table, the Percentiles column shows the percent sidechain outliers of the chain as a percentile score with respect to all X-ray entries followed by that with respect to entries of similar resolution.

The Analysed column shows the number of residues for which the sidechain conformation was analysed, and the total number of residues.

Mol	Chain	Analysed	Rotameric	Outliers	Percentiles	
1	A	326/374 (87%)	320 (98%)	6 (2%)	64	76
1	B	334/374 (89%)	330 (99%)	4 (1%)	75	86
All	All	660/748 (88%)	650 (98%)	10 (2%)	70	81

All (10) residues with a non-rotameric sidechain are listed below:

Mol	Chain	Res	Type
1	A	1653	ILE
1	A	1675	SER
1	A	1823	CYS
1	A	1851	ILE
1	A	1858	HIS
1	A	1939	LYS
1	B	1675	SER
1	B	1823	CYS
1	B	1851	ILE
1	B	1858	HIS

Some sidechains can be flipped to improve hydrogen bonding and reduce clashes. All (6) such sidechains are listed below:

Mol	Chain	Res	Type
1	A	1894	ASN
1	A	1954	HIS
1	A	1973	ASN
1	B	1701	ASN
1	B	1864	HIS
1	B	1954	HIS

5.3.3 RNA ⓘ

There are no RNA molecules in this entry.

5.4 Non-standard residues in protein, DNA, RNA chains ⓘ

There are no non-standard protein/DNA/RNA residues in this entry.

5.5 Carbohydrates ⓘ

There are no carbohydrates in this entry.

5.6 Ligand geometry ⓘ

Of 15 ligands modelled in this entry, 2 are monoatomic - leaving 13 for Mogul analysis.

In the following table, the Counts columns list the number of bonds (or angles) for which Mogul statistics could be retrieved, the number of bonds (or angles) that are observed in the model and the number of bonds (or angles) that are defined in the chemical component dictionary. The Link column lists molecule types, if any, to which the group is linked. The Z score for a bond length (or angle) is the number of standard deviations the observed value is removed from the expected value. A bond length (or angle) with $|Z| > 2$ is considered an outlier worth inspection. RMSZ is the root-mean-square of all Z scores of the bond lengths (or angles).

Mol	Type	Chain	Res	Link	Bond lengths			Bond angles		
					Counts	RMSZ	$\# Z > 2$	Counts	RMSZ	$\# Z > 2$
3	SAM	A	2409	-	21,29,29	0.64	0	17,42,42	0.97	1 (5%)
4	GTP	A	2410	-	27,34,34	0.92	1 (3%)	27,54,54	2.22	5 (18%)
5	GOL	A	2411	-	5,5,5	0.12	0	5,5,5	0.23	0
5	GOL	A	2412	-	5,5,5	0.10	0	5,5,5	0.20	0
5	GOL	A	2413	-	5,5,5	0.12	0	5,5,5	0.16	0
6	ADN	A	2414	-	18,21,21	0.58	0	17,31,31	0.96	1 (5%)
3	SAM	B	2409	-	21,29,29	0.61	0	17,42,42	0.93	1 (5%)
4	GTP	B	2410	-	27,34,34	1.00	1 (3%)	27,54,54	2.30	5 (18%)

Mol	Type	Chain	Res	Link	Bond lengths			Bond angles		
					Counts	RMSZ	# Z > 2	Counts	RMSZ	# Z > 2
5	GOL	B	2411	-	5,5,5	0.12	0	5,5,5	0.14	0
5	GOL	B	2412	-	5,5,5	0.13	0	5,5,5	0.25	0
5	GOL	B	2413	-	5,5,5	0.12	0	5,5,5	0.30	0
5	GOL	B	2414	-	5,5,5	0.13	0	5,5,5	0.18	0
6	ADN	B	2415	-	18,21,21	0.59	0	17,31,31	0.81	1 (5%)

In the following table, the Chirals column lists the number of chiral outliers, the number of chiral centers analysed, the number of these observed in the model and the number defined in the chemical component dictionary. Similar counts are reported in the Torsion and Rings columns. '-' means no outliers of that kind were identified.

Mol	Type	Chain	Res	Link	Chirals	Torsions	Rings
3	SAM	A	2409	-	-	0/8/33/33	0/3/3/3
4	GTP	A	2410	-	-	0/18/38/38	0/3/3/3
5	GOL	A	2411	-	-	0/4/4/4	0/0/0/0
5	GOL	A	2412	-	-	0/4/4/4	0/0/0/0
5	GOL	A	2413	-	-	0/4/4/4	0/0/0/0
6	ADN	A	2414	-	-	0/2/22/22	0/3/3/3
3	SAM	B	2409	-	-	0/8/33/33	0/3/3/3
4	GTP	B	2410	-	-	0/18/38/38	0/3/3/3
5	GOL	B	2411	-	-	0/4/4/4	0/0/0/0
5	GOL	B	2412	-	-	0/4/4/4	0/0/0/0
5	GOL	B	2413	-	-	0/4/4/4	0/0/0/0
5	GOL	B	2414	-	-	0/4/4/4	0/0/0/0
6	ADN	B	2415	-	-	0/2/22/22	0/3/3/3

All (2) bond length outliers are listed below:

Mol	Chain	Res	Type	Atoms	Z	Observed(Å)	Ideal(Å)
4	A	2410	GTP	C6-N1	3.19	1.38	1.33
4	B	2410	GTP	C6-N1	3.25	1.38	1.33

All (14) bond angle outliers are listed below:

Mol	Chain	Res	Type	Atoms	Z	Observed(°)	Ideal(°)
4	B	2410	GTP	C5-C6-N1	-7.89	112.24	123.48
4	A	2410	GTP	C5-C6-N1	-7.87	112.27	123.48
6	A	2414	ADN	C4'-O4'-C1'	-3.18	106.39	109.77
4	B	2410	GTP	O2A-PA-O5'	-3.03	93.85	108.14
3	A	2409	SAM	C4'-O4'-C1'	-2.84	106.75	109.77
3	B	2409	SAM	C4'-O4'-C1'	-2.81	106.78	109.77
4	B	2410	GTP	C6-C5-C4	-2.81	118.06	120.84

Continued on next page...

Continued from previous page...

Mol	Chain	Res	Type	Atoms	Z	Observed(°)	Ideal(°)
4	B	2410	GTP	N3-C2-N1	-2.74	123.45	127.46
4	A	2410	GTP	N3-C2-N1	-2.68	123.55	127.46
4	A	2410	GTP	C6-C5-C4	-2.54	118.32	120.84
6	B	2415	ADN	C4'-O4'-C1'	-2.20	107.42	109.77
4	A	2410	GTP	O2A-PA-O5'	-2.09	98.27	108.14
4	A	2410	GTP	C6-N1-C2	6.28	125.10	116.06
4	B	2410	GTP	C6-N1-C2	6.34	125.19	116.06

There are no chirality outliers.

There are no torsion outliers.

There are no ring outliers.

1 monomer is involved in 2 short contacts:

Mol	Chain	Res	Type	Clashes	Symm-Clashes
4	B	2410	GTP	2	0

5.7 Other polymers [i](#)

There are no such residues in this entry.

5.8 Polymer linkage issues [i](#)

There are no chain breaks in this entry.

6 Fit of model and data [i](#)

6.1 Protein, DNA and RNA chains [i](#)

In the following table, the column labelled ‘#RSRZ> 2’ contains the number (and percentage) of RSRZ outliers, followed by percent RSRZ outliers for the chain as percentile scores relative to all X-ray entries and entries of similar resolution. The OWAB column contains the minimum, median, 95th percentile and maximum values of the occupancy-weighted average B-factor per residue. The column labelled ‘Q< 0.9’ lists the number of (and percentage) of residues with an average occupancy less than 0.9.

Mol	Chain	Analysed	<RSRZ>	#RSRZ>2	OWAB(Å ²)	Q<0.9
1	A	361/415 (86%)	0.08	5 (1%) 75 74	51, 65, 98, 135	0
1	B	370/415 (89%)	0.13	3 (0%) 86 85	48, 62, 98, 148	0
All	All	731/830 (88%)	0.11	8 (1%) 80 79	48, 64, 98, 148	0

All (8) RSRZ outliers are listed below:

Mol	Chain	Res	Type	RSRZ
1	B	1941	LEU	4.4
1	A	1941	LEU	4.3
1	A	1634	LYS	3.9
1	B	1615	VAL	3.4
1	A	1918	LEU	2.9
1	A	1916	ARG	2.3
1	A	1635	ASN	2.2
1	B	1634	LYS	2.1

6.2 Non-standard residues in protein, DNA, RNA chains [i](#)

There are no non-standard protein/DNA/RNA residues in this entry.

6.3 Carbohydrates [i](#)

There are no carbohydrates in this entry.

6.4 Ligands [i](#)

In the following table, the Atoms column lists the number of modelled atoms in the group and the number defined in the chemical component dictionary. LLDF column lists the quality of electron density of the group with respect to its neighbouring residues in protein, DNA or RNA chains.

The B-factors column lists the minimum, median, 95th percentile and maximum values of B factors of atoms in the group. The column labelled 'Q< 0.9' lists the number of atoms with occupancy less than 0.9.

Mol	Type	Chain	Res	Atoms	RSCC	RSR	LLDF	B-factors(Å ²)	Q<0.9
5	GOL	A	2412	6/6	0.76	0.54	27.32	101,104,104,105	0
4	GTP	A	2410	32/32	0.49	0.59	18.44	149,154,157,157	12
4	GTP	B	2410	32/32	0.54	0.62	17.99	145,150,155,155	12
5	GOL	B	2411	6/6	0.60	0.52	14.72	119,120,121,121	0
5	GOL	A	2411	6/6	0.82	0.41	8.98	94,99,100,101	0
5	GOL	B	2414	6/6	0.66	0.35	7.56	96,100,102,103	0
5	GOL	B	2413	6/6	0.85	0.29	7.04	99,102,103,104	0
5	GOL	B	2412	6/6	0.84	0.39	6.73	94,96,97,98	0
6	ADN	B	2415	19/19	0.90	0.20	4.22	60,83,96,96	0
6	ADN	A	2414	19/19	0.86	0.20	2.53	62,90,98,98	0
2	ZN	A	2408	1/1	0.99	0.19	2.46	60,60,60,60	0
2	ZN	B	2408	1/1	0.99	0.19	2.42	56,56,56,56	0
3	SAM	B	2409	27/27	0.98	0.15	0.59	45,54,59,62	0
3	SAM	A	2409	27/27	0.98	0.12	-0.79	51,57,61,64	0
5	GOL	A	2413	6/6	0.23	0.28	-	132,133,133,134	0

6.5 Other polymers [i](#)

There are no such residues in this entry.