



Full wwPDB X-ray Structure Validation Report ⓘ

Nov 2, 2017 – 03:00 PM EDT

PDB ID : 3UFR
Title : Structure of rat nitric oxide synthase heme domain in complex with 6-(((3R,4R)-4-(((E)-5-(3-fluorophenyl)pent-4-en-1-yl)oxy)pyrrolidin-3-yl)methyl)-4-methylpyridin-2-amine
Authors : Li, H.; Poulos, T.L.
Deposited on : unknown
Resolution : 2.10 Å(reported)

This is a Full wwPDB X-ray Structure Validation Report for a publicly released PDB entry.

We welcome your comments at validation@mail.wwpdb.org

A user guide is available at

<http://wwpdb.org/validation/2016/XrayValidationReportHelp>

with specific help available everywhere you see the ⓘ symbol.

The following versions of software and data (see [references ⓘ](#)) were used in the production of this report:

MolProbity : 4.02b-467
Mogul : 1.7.2 (RC1), CSD as538be (2017)
Xtriage (Phenix) : 1.9-1692
EDS : rb-20030345
Percentile statistics : 20161228.v01 (using entries in the PDB archive December 28th 2016)
Refmac : 5.8.0135
CCP4 : 6.5.0
Ideal geometry (proteins) : Engh & Huber (2001)
Ideal geometry (DNA, RNA) : Parkinson et al. (1996)
Validation Pipeline (wwPDB-VP) : rb-20030345

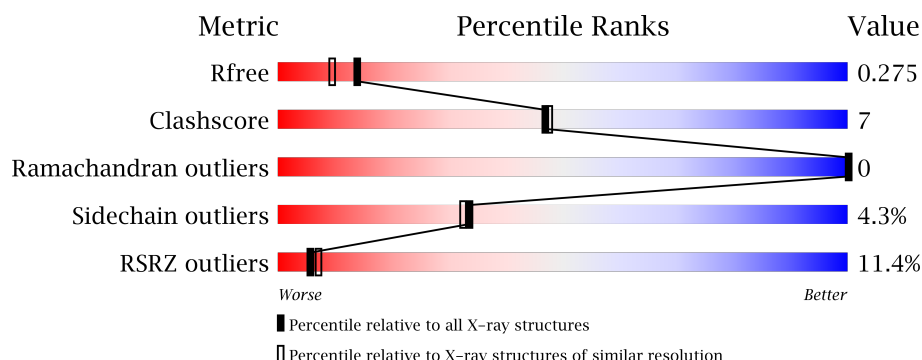
1 Overall quality at a glance

The following experimental techniques were used to determine the structure:

X-RAY DIFFRACTION

The reported resolution of this entry is 2.10 Å.

Percentile scores (ranging between 0-100) for global validation metrics of the entry are shown in the following graphic. The table shows the number of entries on which the scores are based.



Metric	Whole archive (#Entries)	Similar resolution (#Entries, resolution range(Å))
R_{free}	100719	4243 (2.10-2.10)
Clashscore	112137	4788 (2.10-2.10)
Ramachandran outliers	110173	4740 (2.10-2.10)
Sidechain outliers	110143	4741 (2.10-2.10)
RSRZ outliers	101464	4275 (2.10-2.10)

The table below summarises the geometric issues observed across the polymeric chains and their fit to the electron density. The red, orange, yellow and green segments on the lower bar indicate the fraction of residues that contain outliers for ≥ 3 , 2, 1 and 0 types of geometric quality criteria. A grey segment represents the fraction of residues that are not modelled. The numeric value for each fraction is indicated below the corresponding segment, with a dot representing fractions $\leq 5\%$. The upper red bar (where present) indicates the fraction of residues that have poor fit to the electron density. The numeric value is given above the bar.

Mol	Chain	Length	Quality of chain
1	A	422	<div> <div>14%</div> <div>80%</div> <div>15%</div> <div>• •</div> </div>
1	B	422	<div> <div>8%</div> <div>81%</div> <div>15%</div> <div>• •</div> </div>

The following table lists non-polymeric compounds, carbohydrate monomers and non-standard residues in protein, DNA, RNA chains that are outliers for geometric or electron-density-fit criteria:

Mol	Type	Chain	Res	Chirality	Geometry	Clashes	Electron density
4	H5W	A	800	-	-	-	X
4	H5W	B	800[A]	-	-	-	X
4	H5W	B	800[B]	-	-	-	X

2 Entry composition [i](#)

There are 7 unique types of molecules in this entry. The entry contains 7097 atoms, of which 0 are hydrogens and 0 are deuteriums.

In the tables below, the ZeroOcc column contains the number of atoms modelled with zero occupancy, the AltConf column contains the number of residues with at least one atom in alternate conformation and the Trace column contains the number of residues modelled with at most 2 atoms.

- Molecule 1 is a protein called Nitric oxide synthase, brain.

Mol	Chain	Residues	Atoms					ZeroOcc	AltConf	Trace
1	A	407	Total	C	N	O	S	0	0	0
			3313	2121	566	605	21			
1	B	411	Total	C	N	O	S	0	2	0
			3357	2150	574	611	22			

- Molecule 2 is PROTOPORPHYRIN IX CONTAINING FE (three-letter code: HEM) (formula: $C_{34}H_{32}FeN_4O_4$).



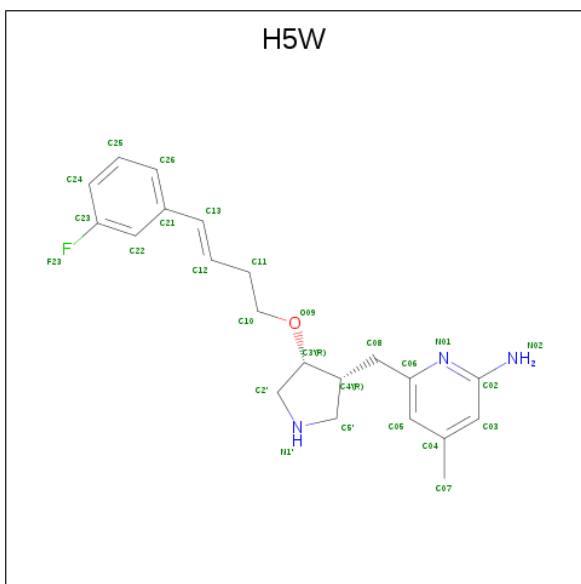
Mol	Chain	Residues	Atoms					ZeroOcc	AltConf
2	A	1	Total	C	Fe	N	O	0	0
			43	34	1	4	4		
2	B	1	Total	C	Fe	N	O	0	0
			43	34	1	4	4		

- Molecule 3 is 5,6,7,8-TETRAHYDROBIOPTERIN (three-letter code: H4B) (formula: $C_9H_{15}N_5O_3$).



Mol	Chain	Residues	Atoms				ZeroOcc	AltConf
3	A	1	Total	C	N	O	0	0
			17	9	5	3		
3	B	1	Total	C	N	O	0	0
			17	9	5	3		

- Molecule 4 is 6-{{(3R,4R)-4-{{[(3E)-4-(3-fluorophenyl)but-3-en-1-yl]oxy}pyrrolidin-3-yl]methyl}}-4-methylpyridin-2-amine (three-letter code: H5W) (formula: C₂₁H₂₆FN₃O).



Mol	Chain	Residues	Atoms					ZeroOcc	AltConf
4	A	1	Total	C	F	N	O	0	0
			26	21	1	3	1		

Continued on next page...

Continued from previous page...

Mol	Chain	Residues	Atoms					ZeroOcc	AltConf
4	B	1	Total	C	F	N	O	0	1
			52	42	2	6	2		

- Molecule 5 is ACETATE ION (three-letter code: ACT) (formula: $C_2H_3O_2$).



Mol	Chain	Residues	Atoms			ZeroOcc	AltConf
5	A	1	Total	C	O	0	0
			4	2	2		
5	B	1	Total	C	O	0	0
			4	2	2		

- Molecule 6 is ZINC ION (three-letter code: ZN) (formula: Zn).

Mol	Chain	Residues	Atoms		ZeroOcc	AltConf
6	A	1	Total	Zn	0	0
			1	1		

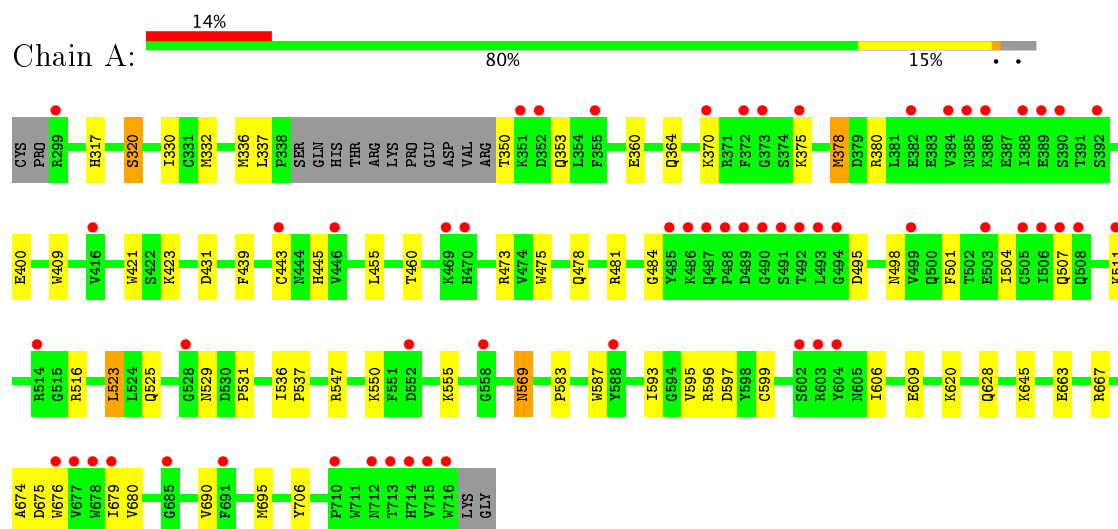
- Molecule 7 is water.

Mol	Chain	Residues	Atoms		ZeroOcc	AltConf
7	A	84	Total	O	0	0
			84	84		
7	B	136	Total	O	0	0
			136	136		

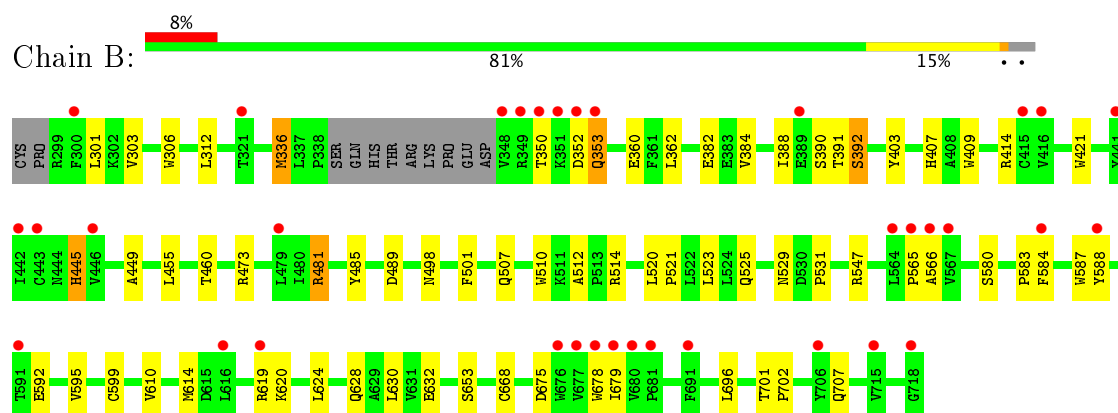
3 Residue-property plots [i](#)

These plots are drawn for all protein, RNA and DNA chains in the entry. The first graphic for a chain summarises the proportions of the various outlier classes displayed in the second graphic. The second graphic shows the sequence view annotated by issues in geometry and electron density. Residues are color-coded according to the number of geometric quality criteria for which they contain at least one outlier: green = 0, yellow = 1, orange = 2 and red = 3 or more. A red dot above a residue indicates a poor fit to the electron density ($RSRZ > 2$). Stretches of 2 or more consecutive residues without any outlier are shown as a green connector. Residues present in the sample, but not in the model, are shown in grey.

- Molecule 1: Nitric oxide synthase, brain



- Molecule 1: Nitric oxide synthase, brain



4 Data and refinement statistics

Property	Value	Source
Space group	P 21 21 21	Depositor
Cell constants a, b, c, α , β , γ	51.87Å 111.34Å 164.52Å 90.00° 90.00° 90.00°	Depositor
Resolution (Å)	46.10 – 2.10 46.10 – 2.10	Depositor EDS
% Data completeness (in resolution range)	96.8 (46.10-2.10) 96.7 (46.10-2.10)	Depositor EDS
R_{merge}	0.07	Depositor
R_{sym}	0.07	Depositor
$\langle I/\sigma(I) \rangle$ ¹	2.31 (at 2.10Å)	Xtriage
Refinement program	REFMAC	Depositor
R, R_{free}	0.199 , 0.249 0.234 , 0.275	Depositor DCC
R_{free} test set	2702 reflections (4.92%)	DCC
Wilson B-factor (Å ²)	39.9	Xtriage
Anisotropy	0.417	Xtriage
Bulk solvent k_{sol} (e/Å ³), B_{sol} (Å ²)	0.35 , 48.7	EDS
L-test for twinning ²	$\langle L \rangle = 0.49$, $\langle L^2 \rangle = 0.32$	Xtriage
Estimated twinning fraction	No twinning to report.	Xtriage
F_o, F_c correlation	0.95	EDS
Total number of atoms	7097	wwPDB-VP
Average B, all atoms (Å ²)	54.0	wwPDB-VP

Xtriage's analysis on translational NCS is as follows: *The largest off-origin peak in the Patterson function is 5.62% of the height of the origin peak. No significant pseudotranslation is detected.*

¹Intensities estimated from amplitudes.

²Theoretical values of $\langle |L| \rangle$, $\langle L^2 \rangle$ for acentric reflections are 0.5, 0.333 respectively for untwinned datasets, and 0.375, 0.2 for perfectly twinned datasets.

5 Model quality [i](#)

5.1 Standard geometry [i](#)

Bond lengths and bond angles in the following residue types are not validated in this section: HEM, ZN, H5W, H4B, ACT

The Z score for a bond length (or angle) is the number of standard deviations the observed value is removed from the expected value. A bond length (or angle) with $|Z| > 5$ is considered an outlier worth inspection. RMSZ is the root-mean-square of all Z scores of the bond lengths (or angles).

Mol	Chain	Bond lengths		Bond angles	
		RMSZ	# Z >5	RMSZ	# Z >5
1	A	0.72	0/3406	0.73	0/4621
1	B	0.83	0/3457	0.80	1/4687 (0.0%)
All	All	0.78	0/6863	0.77	1/9308 (0.0%)

There are no bond length outliers.

All (1) bond angle outliers are listed below:

Mol	Chain	Res	Type	Atoms	Z	Observed(°)	Ideal(°)
1	B	489	ASP	CB-CG-OD2	6.45	124.10	118.30

There are no chirality outliers.

There are no planarity outliers.

5.2 Too-close contacts [i](#)

In the following table, the Non-H and H(model) columns list the number of non-hydrogen atoms and hydrogen atoms in the chain respectively. The H(added) column lists the number of hydrogen atoms added and optimized by MolProbity. The Clashes column lists the number of clashes within the asymmetric unit, whereas Symm-Clashes lists symmetry related clashes.

Mol	Chain	Non-H	H(model)	H(added)	Clashes	Symm-Clashes
1	A	3313	0	3221	43	0
1	B	3357	0	3273	49	0
2	A	43	0	30	3	0
2	B	43	0	30	7	0
3	A	17	0	15	1	0
3	B	17	0	15	2	0
4	A	26	0	26	3	0
4	B	52	0	52	5	0

Continued on next page...

Continued from previous page...

Mol	Chain	Non-H	H(model)	H(added)	Clashes	Symm-Clashes
5	A	4	0	3	0	0
5	B	4	0	3	0	0
6	A	1	0	0	0	0
7	A	84	0	0	3	0
7	B	136	0	0	0	0
All	All	7097	0	6668	96	0

The all-atom clashscore is defined as the number of clashes found per 1000 atoms (including hydrogen atoms). The all-atom clashscore for this structure is 7.

All (96) close contacts within the same asymmetric unit are listed below, sorted by their clash magnitude.

Atom-1	Atom-2	Interatomic distance (Å)	Clash overlap (Å)
1:B:592:GLU:OE1	4:B:800[B]:H5W:H3	1.57	1.04
1:B:481:ARG:HD3	1:B:498:ASN:HD21	1.26	0.99
2:A:750:HEM:HMC2	2:A:750:HEM:HBC2	1.55	0.89
1:A:523:LEU:HD22	1:A:531:PRO:HB2	1.58	0.85
1:B:353:GLN:H	1:B:353:GLN:HE21	1.30	0.76
1:B:481:ARG:HD3	1:B:498:ASN:ND2	2.02	0.71
1:A:317:HIS:O	1:A:320:SER:HB3	1.89	0.70
1:B:584:PHE:CD1	2:B:750:HEM:HAC	2.32	0.64
2:B:750:HEM:C1C	4:B:800[A]:H5W:H27	2.33	0.63
1:B:350:THR:HB	1:B:353:GLN:HE22	1.63	0.63
1:B:587:TRP:H	2:B:750:HEM:HAB	1.64	0.63
1:A:596:ARG:HH22	3:A:760:H4B:C4	2.11	0.62
1:A:525:GLN:HG3	1:A:529:ASN:O	2.00	0.62
1:B:336:MET:HG2	4:B:800[B]:H5W:H27	1.83	0.60
1:A:380:ARG:HD3	1:A:400:GLU:OE1	2.02	0.59
1:A:706:TYR:CE2	4:A:800:H5W:H3	2.38	0.58
1:A:478:GLN:HB2	1:A:481:ARG:HG3	1.86	0.57
1:B:350:THR:HB	1:B:353:GLN:NE2	2.20	0.56
1:B:481:ARG:NH1	1:B:498:ASN:OD1	2.37	0.56
1:B:595:VAL:O	1:B:599:CYS:HB2	2.06	0.56
1:A:596:ARG:NH1	1:A:596:ARG:HG3	2.21	0.56
1:B:350:THR:HG22	1:B:352:ASP:H	1.71	0.56
1:A:507:GLN:O	1:A:507:GLN:HG2	2.07	0.55
1:B:460:THR:O	1:B:583:PRO:HD2	2.05	0.55
1:B:584:PHE:CD1	2:B:750:HEM:CAC	2.89	0.55
1:A:330:ILE:HD11	1:B:696:LEU:HB3	1.88	0.55
2:A:750:HEM:CMC	2:A:750:HEM:HBC2	2.34	0.54
1:B:353:GLN:N	1:B:353:GLN:HE21	2.02	0.54

Continued on next page...

Continued from previous page...

Atom-1	Atom-2	Interatomic distance (Å)	Clash overlap (Å)
1:A:569:ASN:H	1:A:569:ASN:HD22	1.55	0.54
1:A:674:ALA:HB3	1:A:695:MET:HB3	1.91	0.52
1:A:475:TRP:CZ2	1:A:531:PRO:HG3	2.46	0.51
1:A:336:MET:HG3	1:B:306:TRP:CE2	2.45	0.51
1:A:460:THR:O	1:A:583:PRO:HD2	2.12	0.50
2:A:750:HEM:C1C	4:A:800:H5W:H27	2.46	0.50
2:B:750:HEM:O2D	4:B:800[B]:H5W:N01	2.45	0.49
1:A:501:PHE:HA	1:A:504:ILE:HD12	1.95	0.49
1:A:595:VAL:O	1:A:599:CYS:HB2	2.13	0.49
4:A:800:H5W:H12	4:A:800:H5W:H7	1.95	0.48
1:B:565:PRO:HB3	1:B:588:TYR:CZ	2.48	0.48
1:B:473:ARG:HD2	1:B:580:SER:O	2.13	0.48
1:B:388:ILE:O	1:B:392:SER:HA	2.14	0.47
1:B:675:ASP:O	1:B:679:ILE:HG12	2.15	0.47
1:B:445:HIS:C	1:B:445:HIS:CD2	2.88	0.47
1:B:523:LEU:CD1	1:B:531:PRO:HB2	2.45	0.47
1:A:628:GLN:NE2	1:B:632:GLU:OE2	2.47	0.46
1:A:596:ARG:HH11	1:A:596:ARG:HG3	1.80	0.46
1:A:378:MET:HA	1:A:378:MET:CE	2.45	0.46
1:B:391:THR:O	1:B:392:SER:HB2	2.14	0.46
1:B:353:GLN:H	1:B:353:GLN:NE2	2.08	0.46
1:B:409:TRP:CE3	1:B:421:TRP:HA	2.51	0.46
1:A:596:ARG:NH2	7:A:87:HOH:O	2.48	0.45
1:B:619:ARG:HB2	1:B:619:ARG:CZ	2.46	0.45
2:B:750:HEM:O1A	3:B:760:H4B:N2	2.41	0.45
1:A:439:PHE:CZ	1:A:443:CYS:SG	3.10	0.45
1:B:485:TYR:CE1	1:B:514:ARG:HA	2.51	0.45
1:A:593:ILE:HA	1:A:597:ASP:HB2	1.99	0.44
1:B:303:VAL:HG22	1:B:312:LEU:HB2	1.98	0.44
1:A:439:PHE:CE2	1:A:443:CYS:SG	3.11	0.44
1:B:455:LEU:CD1	1:B:455:LEU:N	2.80	0.44
1:A:445:HIS:C	1:A:445:HIS:CD2	2.90	0.44
1:B:403:TYR:CE1	1:B:407:HIS:CE1	3.06	0.44
1:A:667:ARG:HD3	7:A:136:HOH:O	2.17	0.44
1:B:624:LEU:O	1:B:628:GLN:HG3	2.18	0.44
1:A:536:ILE:O	1:A:537:PRO:C	2.55	0.43
1:B:336:MET:HE1	3:B:760:H4B:H9	2.00	0.43
1:B:388:ILE:O	1:B:392:SER:N	2.51	0.43
1:B:362:LEU:HD11	1:B:384:VAL:HG21	2.00	0.43
1:B:414:ARG:HD3	1:B:678:TRP:CD2	2.53	0.43
1:B:595:VAL:HG22	1:B:630:LEU:HD11	2.00	0.43

Continued on next page...

Continued from previous page...

Atom-1	Atom-2	Interatomic distance (Å)	Clash overlap (Å)
1:A:455:LEU:HD12	1:A:587:TRP:HB3	2.01	0.43
1:B:501:PHE:HD2	1:B:520:LEU:HD13	1.84	0.43
1:B:610:VAL:O	1:B:614:MET:HG3	2.19	0.42
1:A:676:TRP:CE2	1:A:680:VAL:HG21	2.54	0.42
1:B:336:MET:HB2	1:B:336:MET:HE2	1.69	0.42
1:B:525:GLN:HG3	1:B:529:ASN:O	2.19	0.42
1:B:566:ALA:HA	1:B:584:PHE:O	2.19	0.42
1:A:455:LEU:HD12	1:A:587:TRP:CB	2.49	0.42
1:A:550:LYS:HB2	1:A:550:LYS:HE3	1.96	0.42
1:B:701:THR:HA	1:B:702:PRO:C	2.40	0.42
1:A:431:ASP:C	1:A:431:ASP:OD2	2.56	0.42
1:A:409:TRP:CE3	1:A:421:TRP:HA	2.55	0.41
1:A:484:GLY:HA3	1:A:495:ASP:O	2.20	0.41
1:A:569:ASN:N	1:A:569:ASN:HD22	2.17	0.41
1:A:473:ARG:NH2	7:A:72:HOH:O	2.54	0.41
1:A:606:ILE:HA	1:A:609:GLU:OE1	2.20	0.41
1:A:475:TRP:HB2	1:A:523:LEU:HB3	2.03	0.41
1:B:391:THR:O	1:B:392:SER:CB	2.68	0.41
1:B:485:TYR:OH	1:B:512:ALA:HB1	2.21	0.41
1:A:675:ASP:O	1:A:679:ILE:HG12	2.21	0.41
1:B:449:ALA:O	1:B:455:LEU:HA	2.21	0.41
1:A:680:VAL:HG22	1:A:690:VAL:HG23	2.03	0.41
1:A:332:MET:CE	1:B:301:LEU:HD13	2.51	0.40
1:A:360:GLU:O	1:A:364:GLN:HG2	2.21	0.40
1:A:481:ARG:HD3	1:A:498:ASN:HD21	1.86	0.40
1:B:510:TRP:CE2	1:B:521:PRO:HD3	2.57	0.40
2:B:750:HEM:C2C	4:B:800[A]:H5W:H27	2.56	0.40

There are no symmetry-related clashes.

5.3 Torsion angles ⓘ

5.3.1 Protein backbone ⓘ

In the following table, the Percentiles column shows the percent Ramachandran outliers of the chain as a percentile score with respect to all X-ray entries followed by that with respect to entries of similar resolution.

The Analysed column shows the number of residues for which the backbone conformation was analysed, and the total number of residues.

Mol	Chain	Analysed	Favoured	Allowed	Outliers	Percentiles	
1	A	403/422 (96%)	386 (96%)	17 (4%)	0	100	100
1	B	409/422 (97%)	391 (96%)	18 (4%)	0	100	100
All	All	812/844 (96%)	777 (96%)	35 (4%)	0	100	100

There are no Ramachandran outliers to report.

5.3.2 Protein sidechains ⓘ

In the following table, the Percentiles column shows the percent sidechain outliers of the chain as a percentile score with respect to all X-ray entries followed by that with respect to entries of similar resolution.

The Analysed column shows the number of residues for which the sidechain conformation was analysed, and the total number of residues.

Mol	Chain	Analysed	Rotameric	Outliers	Percentiles	
1	A	363/377 (96%)	346 (95%)	17 (5%)	30	28
1	B	368/377 (98%)	353 (96%)	15 (4%)	35	35
All	All	731/754 (97%)	699 (96%)	32 (4%)	33	31

All (32) residues with a non-rotameric sidechain are listed below:

Mol	Chain	Res	Type
1	A	320	SER
1	A	337	LEU
1	A	350	THR
1	A	353	GLN
1	A	370	LYS
1	A	375	LYS
1	A	378	MET
1	A	423	LYS
1	A	511	LYS
1	A	516	ARG
1	A	523	LEU
1	A	547	ARG
1	A	555	LYS
1	A	569	ASN
1	A	620	LYS
1	A	645	LYS
1	A	663	GLU
1	B	336	MET

Continued on next page...

Continued from previous page...

Mol	Chain	Res	Type
1	B	353	GLN
1	B	360	GLU
1	B	382	GLU
1	B	390	SER
1	B	392	SER
1	B	445	HIS
1	B	481	ARG
1	B	507	GLN
1	B	547	ARG
1	B	620	LYS
1	B	653	SER
1	B	668[A]	CYS
1	B	668[B]	CYS
1	B	707	GLN

Some sidechains can be flipped to improve hydrogen bonding and reduce clashes. All (13) such sidechains are listed below:

Mol	Chain	Res	Type
1	A	353	GLN
1	A	454	ASN
1	A	569	ASN
1	A	697	ASN
1	B	353	GLN
1	B	385	ASN
1	B	425	GLN
1	B	454	ASN
1	B	535	GLN
1	B	601	ASN
1	B	605	ASN
1	B	642	GLN
1	B	697	ASN

5.3.3 RNA ⓘ

There are no RNA molecules in this entry.

5.4 Non-standard residues in protein, DNA, RNA chains ⓘ

There are no non-standard protein/DNA/RNA residues in this entry.

5.5 Carbohydrates [i](#)

There are no carbohydrates in this entry.

5.6 Ligand geometry [i](#)

Of 10 ligands modelled in this entry, 1 is monoatomic - leaving 9 for Mogul analysis.

In the following table, the Counts columns list the number of bonds (or angles) for which Mogul statistics could be retrieved, the number of bonds (or angles) that are observed in the model and the number of bonds (or angles) that are defined in the Chemical Component Dictionary. The Link column lists molecule types, if any, to which the group is linked. The Z score for a bond length (or angle) is the number of standard deviations the observed value is removed from the expected value. A bond length (or angle) with $|Z| > 2$ is considered an outlier worth inspection. RMSZ is the root-mean-square of all Z scores of the bond lengths (or angles).

Mol	Type	Chain	Res	Link	Bond lengths			Bond angles		
					Counts	RMSZ	# Z > 2	Counts	RMSZ	# Z > 2
2	HEM	A	750	1	28,50,50	2.34	11 (39%)	17,82,82	2.54	8 (47%)
3	H4B	A	760	-	14,18,18	0.76	0	12,26,26	2.19	4 (33%)
4	H5W	A	800	-	25,28,28	1.05	3 (12%)	31,37,37	1.75	7 (22%)
5	ACT	A	860	-	1,3,3	2.29	1 (100%)	0,3,3	0.00	-
2	HEM	B	750	1	28,50,50	2.52	10 (35%)	17,82,82	1.89	5 (29%)
3	H4B	B	760	-	14,18,18	0.93	0	12,26,26	2.55	5 (41%)
4	H5W	B	800[A]	-	25,28,28	0.98	1 (4%)	31,37,37	2.05	8 (25%)
4	H5W	B	800[B]	-	25,28,28	0.70	0	31,37,37	1.91	6 (19%)
5	ACT	B	860	-	1,3,3	1.67	0	0,3,3	0.00	-

In the following table, the Chirals column lists the number of chiral outliers, the number of chiral centers analysed, the number of these observed in the model and the number defined in the Chemical Component Dictionary. Similar counts are reported in the Torsion and Rings columns. '-' means no outliers of that kind were identified.

Mol	Type	Chain	Res	Link	Chirals	Torsions	Rings
2	HEM	A	750	1	-	0/6/54/54	0/0/8/8
3	H4B	A	760	-	-	0/8/17/17	0/2/2/2
4	H5W	A	800	-	-	0/12/22/22	0/3/3/3
5	ACT	A	860	-	-	0/0/0/0	0/0/0/0
2	HEM	B	750	1	-	0/6/54/54	0/0/8/8
3	H4B	B	760	-	-	0/8/17/17	0/2/2/2
4	H5W	B	800[A]	-	-	0/12/22/22	0/3/3/3
4	H5W	B	800[B]	-	-	0/12/22/22	0/3/3/3
5	ACT	B	860	-	-	0/0/0/0	0/0/0/0

All (26) bond length outliers are listed below:

Mol	Chain	Res	Type	Atoms	Z	Observed(Å)	Ideal(Å)
2	B	750	HEM	C3C-C2C	-5.84	1.32	1.40
2	A	750	HEM	C3B-C2B	-5.06	1.33	1.40
2	B	750	HEM	C3B-C2B	-4.80	1.34	1.40
2	A	750	HEM	C3C-C2C	-3.89	1.35	1.40
4	A	800	H5W	C22-C23	2.11	1.41	1.37
2	A	750	HEM	C1D-ND	2.12	1.40	1.36
2	B	750	HEM	CMB-C2B	2.13	1.56	1.51
4	B	800[A]	H5W	C11-C10	2.17	1.54	1.51
4	A	800	H5W	C24-C23	2.25	1.41	1.37
5	A	860	ACT	CH3-C	2.29	1.51	1.48
2	B	750	HEM	CMD-C2D	2.36	1.56	1.51
2	A	750	HEM	CMD-C2D	2.38	1.56	1.51
2	A	750	HEM	C1B-NB	2.38	1.39	1.36
2	A	750	HEM	CMC-C2C	2.64	1.57	1.51
4	A	800	H5W	C11-C10	2.65	1.55	1.51
2	B	750	HEM	CMA-C3A	2.78	1.57	1.51
2	A	750	HEM	C1C-NC	2.78	1.40	1.36
2	B	750	HEM	C3B-CAB	2.88	1.53	1.47
2	A	750	HEM	C3C-CAC	2.97	1.53	1.47
2	B	750	HEM	C1B-NB	3.48	1.40	1.36
2	B	750	HEM	C3C-CAC	3.56	1.54	1.47
2	A	750	HEM	C3B-CAB	3.64	1.55	1.47
2	A	750	HEM	C4D-ND	4.15	1.41	1.36
2	B	750	HEM	C3D-C2D	4.51	1.51	1.37
2	A	750	HEM	C3D-C2D	4.83	1.52	1.37
2	B	750	HEM	C4D-ND	4.83	1.42	1.36

All (43) bond angle outliers are listed below:

Mol	Chain	Res	Type	Atoms	Z	Observed(°)	Ideal(°)
2	A	750	HEM	CBA-CAA-C2A	-5.03	102.86	112.48
4	B	800[A]	H5W	C05-C06-N01	-4.42	118.12	122.91
2	A	750	HEM	CBD-CAD-C3D	-4.25	104.37	112.47
4	B	800[B]	H5W	C05-C06-N01	-3.97	118.61	122.91
4	A	800	H5W	C05-C06-N01	-3.60	119.00	122.91
2	B	750	HEM	CBD-CAD-C3D	-3.57	105.65	112.47
2	A	750	HEM	CAD-CBD-CGD	-3.42	106.81	112.66
4	B	800[B]	H5W	C11-C12-C13	-3.31	118.95	125.50
4	B	800[A]	H5W	C11-C12-C13	-3.06	119.45	125.50
2	A	750	HEM	C1D-C2D-C3D	-2.93	104.96	107.00
2	B	750	HEM	C1D-C2D-C3D	-2.87	105.00	107.00
3	B	760	H4B	N3-C2-N1	-2.86	120.82	125.45

Continued on next page...

Continued from previous page...

Mol	Chain	Res	Type	Atoms	Z	Observed(°)	Ideal(°)
4	A	800	H5W	C11-C12-C13	-2.70	120.17	125.50
2	A	750	HEM	CAA-CBA-CGA	-2.68	108.08	112.66
2	B	750	HEM	CAA-CBA-CGA	-2.44	108.50	112.66
3	B	760	H4B	C6-C7-N8	-2.38	107.24	111.01
3	A	760	H4B	N3-C2-N1	-2.33	121.67	125.45
2	B	750	HEM	C3C-C4C-NC	-2.33	106.55	110.94
2	A	750	HEM	CMA-C3A-C4A	-2.31	124.91	128.46
4	A	800	H5W	C24-C23-C22	-2.21	120.40	123.29
4	B	800[A]	H5W	C24-C23-C22	-2.11	120.52	123.29
3	B	760	H4B	C2-N1-C8A	2.01	119.04	114.51
3	A	760	H4B	C2-N1-C8A	2.23	119.53	114.51
4	B	800[B]	H5W	N02-C02-N01	2.27	120.46	116.64
4	A	800	H5W	O09-C10-C11	2.33	111.82	107.47
2	A	750	HEM	CMD-C2D-C1D	2.47	132.26	128.46
4	B	800[B]	H5W	C5'-C4'-C3'	2.73	106.88	103.40
4	B	800[A]	H5W	C2'-N1'-C5'	2.91	112.17	105.40
4	A	800	H5W	C2'-N1'-C5'	2.91	112.18	105.40
4	A	800	H5W	C02-N01-C06	3.24	120.46	118.17
4	B	800[B]	H5W	C2'-N1'-C5'	3.55	113.66	105.40
3	A	760	H4B	C4-N3-C2	3.62	121.26	116.06
4	B	800[A]	H5W	N02-C02-N01	3.62	122.73	116.64
2	B	750	HEM	C4C-C3C-C2C	3.88	109.61	106.90
2	A	750	HEM	C4C-C3C-C2C	3.99	109.68	106.90
4	B	800[A]	H5W	O09-C10-C11	4.03	115.00	107.47
4	B	800[A]	H5W	C08-C06-N01	4.06	123.52	117.12
3	B	760	H4B	C4-N3-C2	4.41	122.41	116.06
4	A	800	H5W	C08-C06-N01	4.50	124.22	117.12
3	A	760	H4B	C4-C4A-C8A	4.74	118.85	114.56
4	B	800[A]	H5W	C02-N01-C06	4.94	121.66	118.17
3	B	760	H4B	C4-C4A-C8A	5.13	119.20	114.56
4	B	800[B]	H5W	C02-N01-C06	6.32	122.64	118.17

There are no chirality outliers.

There are no torsion outliers.

There are no ring outliers.

7 monomers are involved in 16 short contacts:

Mol	Chain	Res	Type	Clashes	Symm-Clashes
2	A	750	HEM	3	0
3	A	760	H4B	1	0
4	A	800	H5W	3	0

Continued on next page...

Continued from previous page...

Mol	Chain	Res	Type	Clashes	Symm-Clashes
2	B	750	HEM	7	0
3	B	760	H4B	2	0
4	B	800[A]	H5W	2	0
4	B	800[B]	H5W	3	0

5.7 Other polymers [i](#)

There are no such residues in this entry.

5.8 Polymer linkage issues [i](#)

There are no chain breaks in this entry.

6 Fit of model and data

6.1 Protein, DNA and RNA chains

In the following table, the column labelled ‘#RSRZ> 2’ contains the number (and percentage) of RSRZ outliers, followed by percent RSRZ outliers for the chain as percentile scores relative to all X-ray entries and entries of similar resolution. The OWAB column contains the minimum, median, 95th percentile and maximum values of the occupancy-weighted average B-factor per residue. The column labelled ‘Q< 0.9’ lists the number of (and percentage) of residues with an average occupancy less than 0.9.

Mol	Chain	Analysed	<RSRZ>	#RSRZ>2	OWAB(Å ²)	Q<0.9
1	A	407/422 (96%)	0.84	58 (14%) 3 4	28, 57, 98, 131	0
1	B	411/422 (97%)	0.52	35 (8%) 11 15	29, 46, 69, 95	0
All	All	818/844 (96%)	0.68	93 (11%) 6 7	28, 51, 93, 131	0

All (93) RSRZ outliers are listed below:

Mol	Chain	Res	Type	RSRZ
1	B	350	THR	8.4
1	A	488	PRO	6.7
1	B	300	PHE	6.1
1	A	486	LYS	5.9
1	A	716	TRP	5.6
1	B	718	GLY	5.5
1	A	373	GLY	4.9
1	B	348	VAL	4.6
1	A	505	CYS	4.4
1	A	355	PHE	4.3
1	B	706[A]	TYR	4.1
1	A	715	VAL	4.0
1	A	713	THR	3.7
1	A	388	ILE	3.7
1	B	352	ASP	3.7
1	A	493	LEU	3.7
1	B	677	VAL	3.6
1	A	351	LYS	3.5
1	A	677	VAL	3.4
1	A	385	ASN	3.4
1	A	714	HIS	3.4
1	B	567	VAL	3.4
1	B	619	ARG	3.3
1	A	375	LYS	3.2

Continued on next page...

Continued from previous page...

Mol	Chain	Res	Type	RSRZ
1	A	491	SER	3.2
1	A	507	GLN	3.2
1	A	389	GLU	3.1
1	A	506	ILE	3.0
1	B	565	PRO	2.9
1	A	503	GLU	2.9
1	B	566	ALA	2.9
1	A	676	TRP	2.9
1	A	679	ILE	2.8
1	A	386	LYS	2.8
1	A	712	ASN	2.8
1	A	352	ASP	2.7
1	A	602	SER	2.7
1	A	390	SER	2.7
1	B	584	PHE	2.7
1	B	691	PHE	2.7
1	B	591	THR	2.7
1	A	678	TRP	2.6
1	B	679	ILE	2.6
1	B	564	LEU	2.6
1	A	485	TYR	2.6
1	A	487	GLN	2.6
1	A	490	GLY	2.6
1	A	604	TYR	2.6
1	B	676	TRP	2.6
1	B	616	LEU	2.6
1	B	321	THR	2.5
1	B	349	ARG	2.5
1	B	446	VAL	2.5
1	B	351	LYS	2.5
1	A	494	GLY	2.5
1	B	443	CYS	2.5
1	A	691	PHE	2.5
1	B	416	VAL	2.4
1	A	528	GLY	2.4
1	A	446	VAL	2.4
1	A	685	GLY	2.4
1	B	588	TYR	2.4
1	A	514	ARG	2.4
1	B	353	GLN	2.4
1	A	299	ARG	2.4
1	A	370	LYS	2.4

Continued on next page...

Continued from previous page...

Mol	Chain	Res	Type	RSRZ
1	A	558	GLY	2.4
1	A	489	ASP	2.3
1	B	681	PRO	2.3
1	B	389	GLU	2.3
1	A	443	CYS	2.3
1	A	392	SER	2.2
1	A	384	VAL	2.2
1	A	499	VAL	2.2
1	B	715	VAL	2.2
1	A	372	PHE	2.2
1	A	508	GLN	2.2
1	A	603	ARG	2.2
1	A	382	GLU	2.2
1	A	492	THR	2.2
1	B	442	ILE	2.2
1	A	416	VAL	2.2
1	A	710	PRO	2.2
1	A	470	HIS	2.1
1	B	479	LEU	2.1
1	B	680	VAL	2.1
1	A	588	TYR	2.1
1	B	415	CYS	2.1
1	A	511	LYS	2.1
1	B	678	TRP	2.1
1	B	441	TYR	2.0
1	A	552	ASP	2.0
1	A	469	LYS	2.0

6.2 Non-standard residues in protein, DNA, RNA chains [i](#)

There are no non-standard protein/DNA/RNA residues in this entry.

6.3 Carbohydrates [i](#)

There are no carbohydrates in this entry.

6.4 Ligands [i](#)

In the following table, the Atoms column lists the number of modelled atoms in the group and the number defined in the chemical component dictionary. LLDF column lists the quality of electron density of the group with respect to its neighbouring residues in protein, DNA or RNA chains.

The B-factors column lists the minimum, median, 95th percentile and maximum values of B factors of atoms in the group. The column labelled 'Q< 0.9' lists the number of atoms with occupancy less than 0.9.

Mol	Type	Chain	Res	Atoms	RSCC	RSR	LLDF	B-factors(Å ²)	Q<0.9
4	H5W	B	800[A]	26/26	0.86	0.38	2.83	41,66,86,88	26
4	H5W	B	800[B]	26/26	0.86	0.38	2.78	47,56,64,66	26
4	H5W	A	800	26/26	0.88	0.26	2.20	39,69,96,97	0
5	ACT	A	860	4/4	0.96	0.19	1.30	59,60,60,60	0
2	HEM	B	750	43/43	0.98	0.23	0.60	25,35,47,58	0
3	H4B	A	760	17/17	0.90	0.21	0.58	44,47,55,56	0
3	H4B	B	760	17/17	0.92	0.21	0.52	34,40,46,48	0
2	HEM	A	750	43/43	0.97	0.19	0.43	31,37,50,57	0
6	ZN	A	900	1/1	1.00	0.13	-0.51	40,40,40,40	0
5	ACT	B	860	4/4	0.96	0.11	-0.96	49,49,52,52	0

6.5 Other polymers ⓘ

There are no such residues in this entry.