



Full wwPDB X-ray Structure Validation Report ⓘ

Nov 13, 2017 – 11:25 PM EST

PDB ID : 5UHD
Title : Crystal structure of Mycobacterium tuberculosis transcription initiation complex containing 4nt RNA in complex with Rifampin
Authors : Lin, W.; Das, K.; Feng, Y.; Ebright, R.H.
Deposited on : unknown
Resolution : 4.01 Å(reported)

This is a Full wwPDB X-ray Structure Validation Report for a publicly released PDB entry.

We welcome your comments at validation@mail.wwpdb.org

A user guide is available at

<http://wwpdb.org/validation/2016/XrayValidationReportHelp>

with specific help available everywhere you see the ⓘ symbol.

The following versions of software and data (see [references ⓘ](#)) were used in the production of this report:

MolProbity : 4.02b-467
Mogul : 1.7.2 (RC1), CSD as538be (2017)
Xtriage (Phenix) : 1.9-1692
EDS : rb-20030345
Percentile statistics : 20161228.v01 (using entries in the PDB archive December 28th 2016)
Refmac : 5.8.0135
CCP4 : 6.5.0
Ideal geometry (proteins) : Engh & Huber (2001)
Ideal geometry (DNA, RNA) : Parkinson et al. (1996)
Validation Pipeline (wwPDB-VP) : rb-20030345

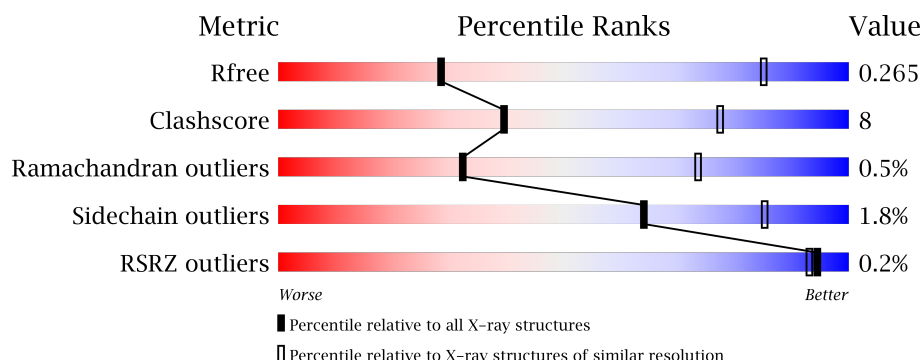
1 Overall quality at a glance

The following experimental techniques were used to determine the structure:

X-RAY DIFFRACTION

The reported resolution of this entry is 4.01 Å.

Percentile scores (ranging between 0-100) for global validation metrics of the entry are shown in the following graphic. The table shows the number of entries on which the scores are based.



Metric	Whole archive (#Entries)	Similar resolution (#Entries, resolution range(Å))
R_{free}	100719	1089 (4.42-3.60)
Clashscore	112137	1189 (4.44-3.60)
Ramachandran outliers	110173	1140 (4.42-3.60)
Sidechain outliers	110143	1127 (4.42-3.60)
RSRZ outliers	101464	1100 (4.42-3.60)

The table below summarises the geometric issues observed across the polymeric chains and their fit to the electron density. The red, orange, yellow and green segments on the lower bar indicate the fraction of residues that contain outliers for ≥ 3 , 2, 1 and 0 types of geometric quality criteria. A grey segment represents the fraction of residues that are not modelled. The numeric value for each fraction is indicated below the corresponding segment, with a dot representing fractions $\leq 5\%$. The upper red bar (where present) indicates the fraction of residues that have poor fit to the electron density. The numeric value is given above the bar.

Mol	Chain	Length	Quality of chain
1	A	347	
1	B	347	
2	C	1178	
3	D	1316	
4	E	110	

Continued on next page...

Continued from previous page...

Mol	Chain	Length	Quality of chain
5	F	528	<div><div></div><div>48%13%39%</div></div>
6	H	23	<div><div></div><div>35%57%9%</div></div>
7	G	16	<div><div></div><div>13%56%25%6%13%</div></div>

2 Entry composition

There are 10 unique types of molecules in this entry. The entry contains 26022 atoms, of which 0 are hydrogens and 0 are deuteriums.

In the tables below, the ZeroOcc column contains the number of atoms modelled with zero occupancy, the AltConf column contains the number of residues with at least one atom in alternate conformation and the Trace column contains the number of residues modelled with at most 2 atoms.

- Molecule 1 is a protein called DNA-directed RNA polymerase subunit alpha.

Mol	Chain	Residues	Atoms					ZeroOcc	AltConf	Trace
1	A	224	Total	C	N	O	S	0	0	0
			1704	1072	295	335	2			
1	B	227	Total	C	N	O	S	0	0	0
			1715	1080	291	342	2			

- Molecule 2 is a protein called DNA-directed RNA polymerase subunit beta.

Mol	Chain	Residues	Atoms					ZeroOcc	AltConf	Trace
2	C	1126	Total	C	N	O	S	0	0	0
			8714	5454	1528	1693	39			

- Molecule 3 is a protein called DNA-directed RNA polymerase subunit beta'.

Mol	Chain	Residues	Atoms					ZeroOcc	AltConf	Trace
3	D	1265	Total	C	N	O	S	0	0	0
			9887	6188	1793	1866	40			

- Molecule 4 is a protein called DNA-directed RNA polymerase subunit omega.

Mol	Chain	Residues	Atoms				ZeroOcc	AltConf	Trace
4	E	81	Total	C	N	O	0	0	0
			637	408	106	123			

- Molecule 5 is a protein called RNA polymerase sigma factor SigA.

Mol	Chain	Residues	Atoms					ZeroOcc	AltConf	Trace
5	F	320	Total	C	N	O	S	0	0	0
			2543	1583	459	492	9			

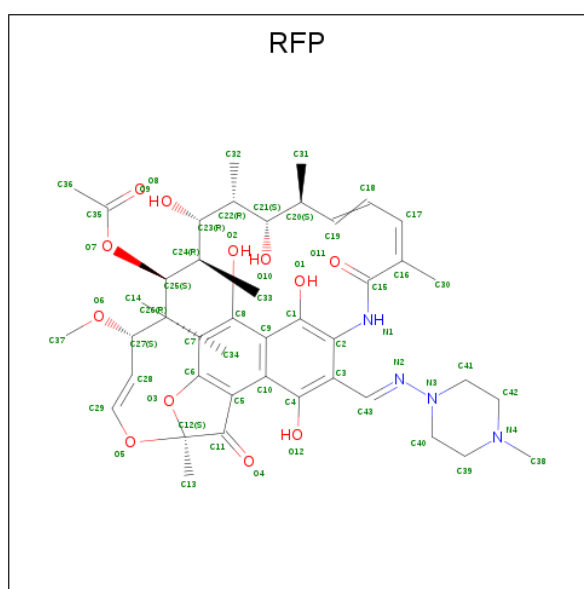
- Molecule 6 is a DNA chain called DNA (5'-D(*TP*AP*TP*AP*AP*TP*GP*GP*GP*AP*GP*CP*TP*GP*TP*CP*AP*CP*GP*GP*AP*TP*G)-3').

Mol	Chain	Residues	Atoms					ZeroOcc	AltConf	Trace
6	H	23	Total	C	N	O	P	0	0	0
			476	227	91	136	22			

- Molecule 7 is a DNA chain called DNA (5'-D(*CP*AP*TP*CP*CP*GP*TP*GP*AP*GP*TP*CP*GP*AP*GP*G)-3').

Mol	Chain	Residues	Atoms					ZeroOcc	AltConf	Trace
7	G	14	Total	C	N	O	P	0	0	0
			284	136	53	82	13			

- Molecule 8 is RIFAMPICIN (three-letter code: RFP) (formula: C₄₃H₅₈N₄O₁₂).



Mol	Chain	Residues	Atoms				ZeroOcc	AltConf
8	C	1	Total	C	N	O	0	0
			59	43	4	12		

- Molecule 9 is ZINC ION (three-letter code: ZN) (formula: Zn).

Mol	Chain	Residues	Atoms		ZeroOcc	AltConf
9	D	2	Total	Zn	0	0
			2	2		

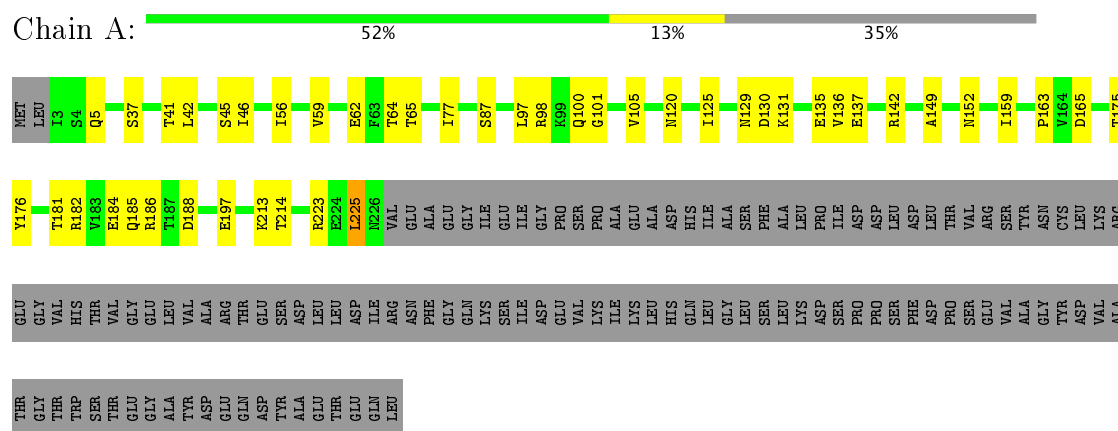
- Molecule 10 is MAGNESIUM ION (three-letter code: MG) (formula: Mg).

Mol	Chain	Residues	Atoms		ZeroOcc	AltConf
10	D	1	Total	Mg	0	0
			1	1		

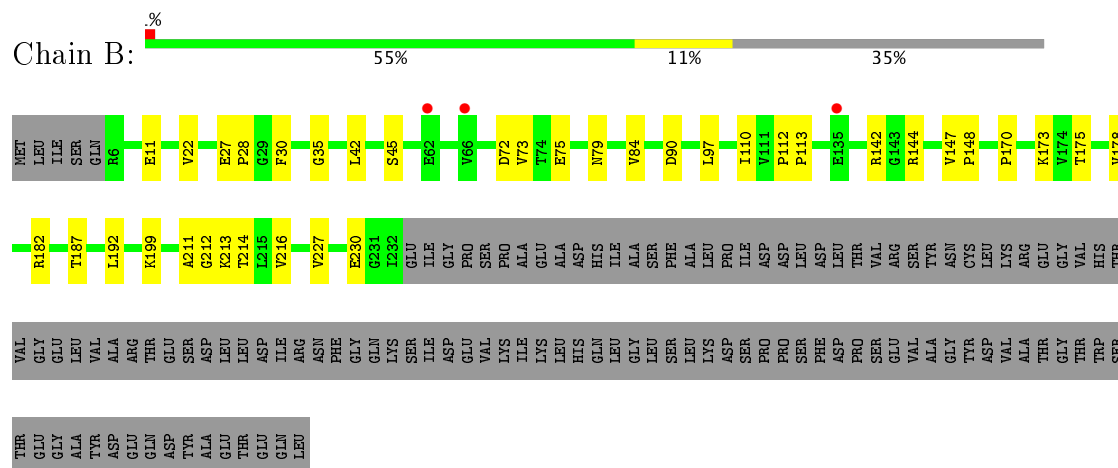
3 Residue-property plots

These plots are drawn for all protein, RNA and DNA chains in the entry. The first graphic for a chain summarises the proportions of the various outlier classes displayed in the second graphic. The second graphic shows the sequence view annotated by issues in geometry and electron density. Residues are color-coded according to the number of geometric quality criteria for which they contain at least one outlier: green = 0, yellow = 1, orange = 2 and red = 3 or more. A red dot above a residue indicates a poor fit to the electron density ($RSRZ > 2$). Stretches of 2 or more consecutive residues without any outlier are shown as a green connector. Residues present in the sample, but not in the model, are shown in grey.

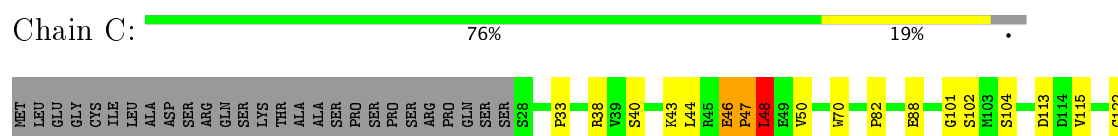
• Molecule 1: DNA-directed RNA polymerase subunit alpha

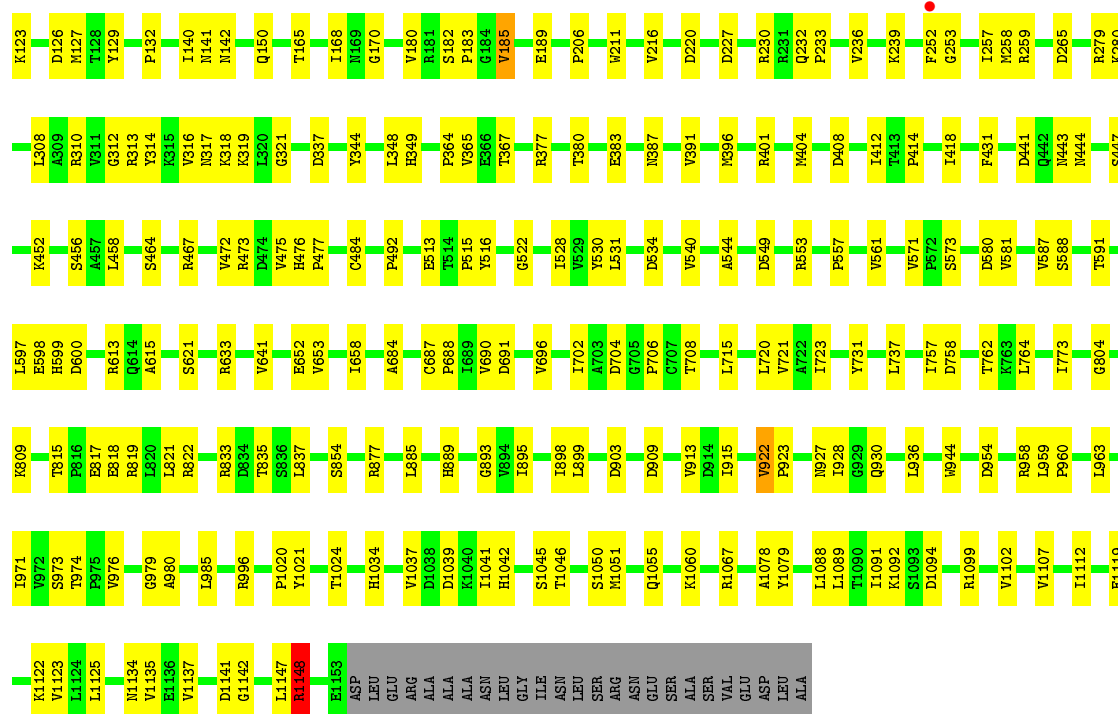


• Molecule 1: DNA-directed RNA polymerase subunit alpha



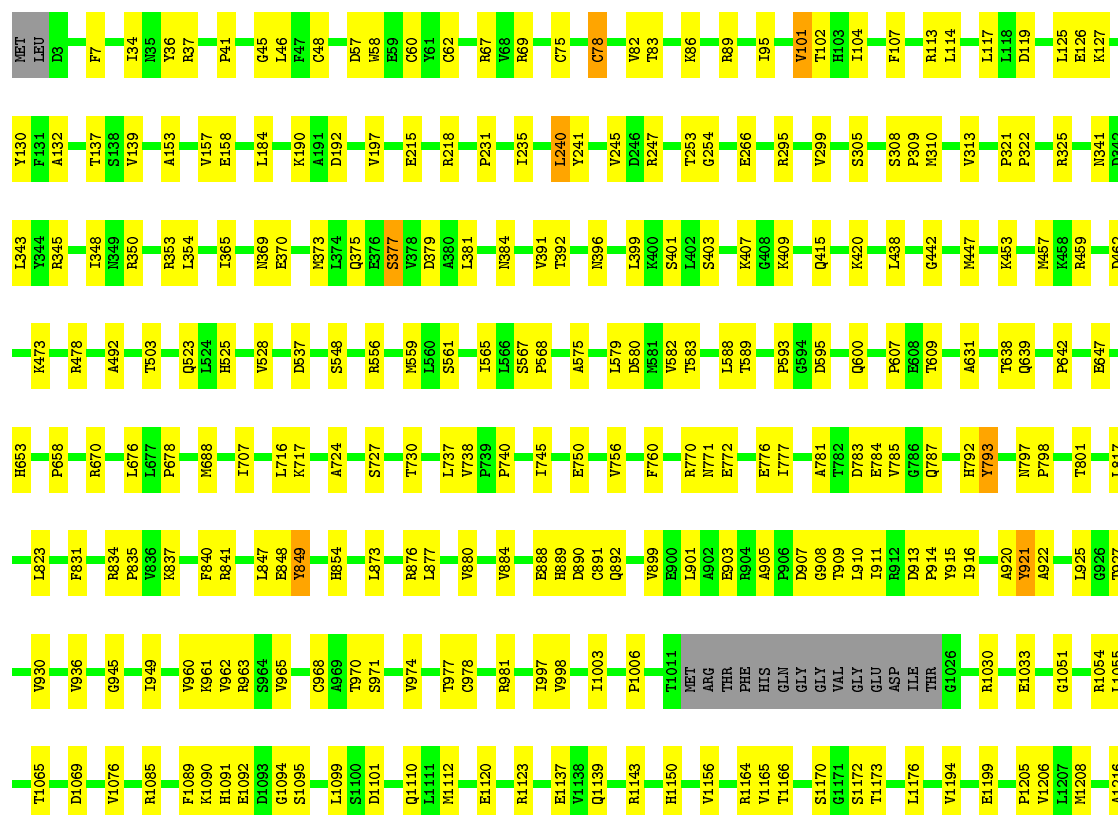
• Molecule 2: DNA-directed RNA polymerase subunit beta





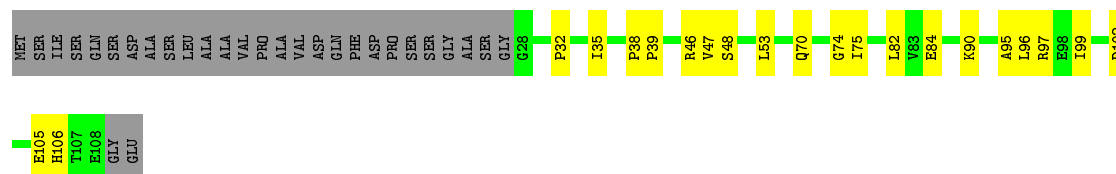
• Molecule 3: DNA-directed RNA polymerase subunit beta'

Chain D: 75% 20%



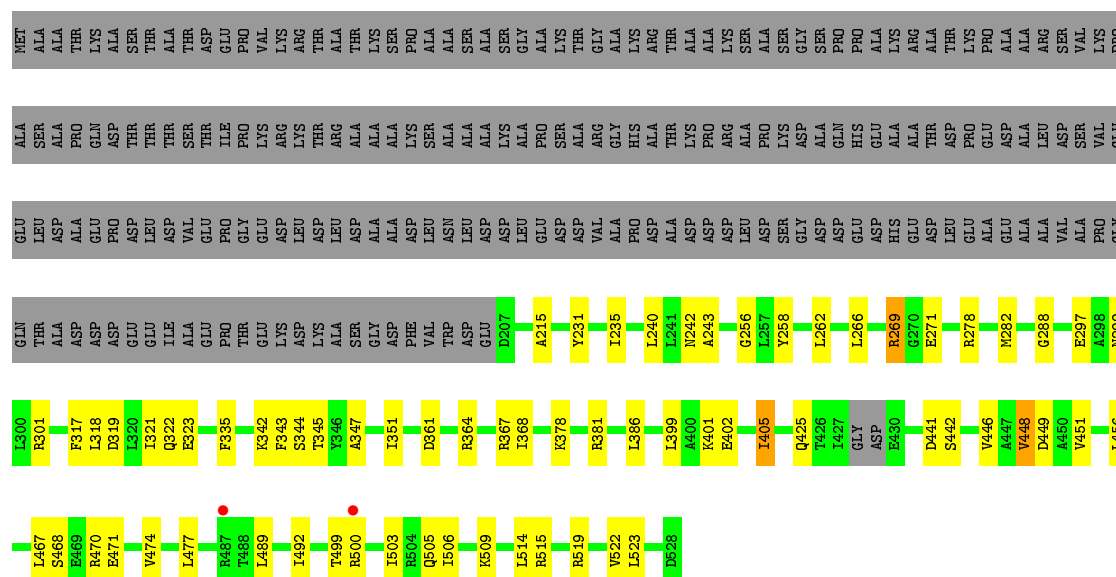
- Molecule 4: DNA-directed RNA polymerase subunit omega

Chain E: 55% 19% 26%



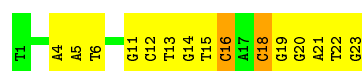
- Molecule 5: RNA polymerase sigma factor SigA

Chain F: 48% 13% 39%



- Molecule 6: DNA (5'-D(*TP*AP*TP*AP*AP*TP*GP*GP*GP*AP*GP*CP*TP*GP*TP*CP*AP*CP*GP*GP*AP*TP*G)-3')

Chain H:  35% 57% 9%



- Molecule 7: DNA (5'-D(*CP*AP*TP*CP*CP*GP*TP*GP*AP*GP*TP*CP*GP*AP*GP*G)-3')

Chain G: 



4 Data and refinement statistics

Property	Value	Source
Space group	P 21 21 21	Depositor
Cell constants a, b, c, α , β , γ	152.08 Å 163.10 Å 197.90 Å 90.00° 90.00° 90.00°	Depositor
Resolution (Å)	49.48 – 4.01 49.83 – 4.01	Depositor EDS
% Data completeness (in resolution range)	90.8 (49.48-4.01) 90.9 (49.83-4.01)	Depositor EDS
R_{merge}	0.10	Depositor
R_{sym}	(Not available)	Depositor
$\langle I/\sigma(I) \rangle$ ¹	2.97 (at 4.00 Å)	Xtriage
Refinement program	PHENIX	Depositor
R, R_{free}	0.211 , 0.264 0.213 , 0.265	Depositor DCC
R_{free} test set	1988 reflections (5.22%)	DCC
Wilson B-factor (Å ²)	30.9	Xtriage
Anisotropy	0.345	Xtriage
Bulk solvent k_{sol} (e/Å ³), B_{sol} (Å ²)	0.27 , -13.1	EDS
L-test for twinning ²	$\langle L \rangle = 0.42$, $\langle L^2 \rangle = 0.25$	Xtriage
Estimated twinning fraction	No twinning to report.	Xtriage
F_o, F_c correlation	0.83	EDS
Total number of atoms	26022	wwPDB-VP
Average B, all atoms (Å ²)	58.0	wwPDB-VP

Xtriage's analysis on translational NCS is as follows: *The largest off-origin peak in the Patterson function is 2.01% of the height of the origin peak. No significant pseudotranslation is detected.*

¹Intensities estimated from amplitudes.

²Theoretical values of $\langle |L| \rangle$, $\langle L^2 \rangle$ for acentric reflections are 0.5, 0.333 respectively for untwinned datasets, and 0.375, 0.2 for perfectly twinned datasets.

5 Model quality

5.1 Standard geometry

Bond lengths and bond angles in the following residue types are not validated in this section: ZN, RFP, MG

The Z score for a bond length (or angle) is the number of standard deviations the observed value is removed from the expected value. A bond length (or angle) with $|Z| > 5$ is considered an outlier worth inspection. RMSZ is the root-mean-square of all Z scores of the bond lengths (or angles).

Mol	Chain	Bond lengths		Bond angles	
		RMSZ	# Z >5	RMSZ	# Z >5
1	A	0.23	0/1730	0.44	0/2354
1	B	0.23	0/1741	0.45	0/2371
2	C	0.25	0/8873	0.43	1/12031 (0.0%)
3	D	0.26	0/10052	0.43	0/13591
4	E	0.30	0/650	0.43	0/886
5	F	0.25	0/2572	0.41	0/3466
6	H	0.69	1/535 (0.2%)	1.03	2/826 (0.2%)
7	G	0.61	0/318	1.01	1/489 (0.2%)
All	All	0.27	1/26471 (0.0%)	0.46	4/36014 (0.0%)

All (1) bond length outliers are listed below:

Mol	Chain	Res	Type	Atoms	Z	Observed(Å)	Ideal(Å)
6	H	16	DC	O3'-P	8.16	1.71	1.61

All (4) bond angle outliers are listed below:

Mol	Chain	Res	Type	Atoms	Z	Observed(°)	Ideal(°)
6	H	18	DC	P-O3'-C3'	10.69	132.53	119.70
7	G	8	DC	P-O3'-C3'	10.23	131.97	119.70
6	H	16	DC	OP1-P-O3'	5.57	117.44	105.20
2	C	48	LEU	CA-CB-CG	5.25	127.38	115.30

There are no chirality outliers.

There are no planarity outliers.

5.2 Too-close contacts ⓘ

In the following table, the Non-H and H(model) columns list the number of non-hydrogen atoms and hydrogen atoms in the chain respectively. The H(added) column lists the number of hydrogen atoms added and optimized by MolProbity. The Clashes column lists the number of clashes within the asymmetric unit, whereas Symm-Clashes lists symmetry related clashes.

Mol	Chain	Non-H	H(model)	H(added)	Clashes	Symm-Clashes
1	A	1704	0	1741	26	0
1	B	1715	0	1739	23	0
2	C	8714	0	8636	143	0
3	D	9887	0	9943	188	0
4	E	637	0	635	13	0
5	F	2543	0	2571	54	0
6	H	476	0	261	32	0
7	G	284	0	159	11	0
8	C	59	0	58	6	0
9	D	2	0	0	0	0
10	D	1	0	0	0	0
All	All	26022	0	25743	432	0

The all-atom clashscore is defined as the number of clashes found per 1000 atoms (including hydrogen atoms). The all-atom clashscore for this structure is 8.

All (432) close contacts within the same asymmetric unit are listed below, sorted by their clash magnitude.

Atom-1	Atom-2	Interatomic distance (Å)	Clash overlap (Å)
6:H:20:DG:O6	7:G:8:DC:N4	1.99	0.95
6:H:20:DG:N1	7:G:8:DC:N3	2.18	0.90
3:D:353:ARG:HH21	5:F:323:GLU:HG2	1.38	0.88
3:D:353:ARG:HH21	5:F:323:GLU:CG	1.88	0.86
6:H:15:DT:C2	6:H:16:DC:C5	2.63	0.86
6:H:16:DC:O2	7:G:12:DG:N2	2.08	0.85
3:D:913:ASP:OD1	3:D:914:PRO:HD2	1.78	0.82
3:D:908:GLY:O	3:D:909:THR:OG1	1.99	0.80
3:D:910:LEU:O	3:D:910:LEU:HD12	1.81	0.80
3:D:354:LEU:HD12	3:D:354:LEU:O	1.81	0.80
6:H:15:DT:C2	6:H:16:DC:C6	2.71	0.79
3:D:901:LEU:O	3:D:901:LEU:HD13	1.82	0.79
3:D:107:PHE:HZ	3:D:126:GLU:HG2	1.48	0.78
2:C:113:ASP:HB2	2:C:132:PRO:HG2	1.64	0.77
3:D:913:ASP:OD1	3:D:914:PRO:CD	2.33	0.77
3:D:907:ASP:OD1	3:D:908:GLY:N	2.16	0.77

Continued on next page...

Continued from previous page...

Atom-1	Atom-2	Interatomic distance (Å)	Clash overlap (Å)
3:D:905:ALA:HB3	3:D:908:GLY:O	1.84	0.77
3:D:891:CYS:SG	3:D:970:THR:OG1	2.44	0.75
3:D:240:LEU:HD12	3:D:240:LEU:O	1.86	0.75
3:D:62:CYS:HB3	3:D:78:CYS:SG	2.28	0.74
6:H:15:DT:C4	6:H:16:DC:N4	2.56	0.74
2:C:1024:THR:H	3:D:730:THR:HG21	1.54	0.73
3:D:1090:LYS:HB3	3:D:1092:GLU:HG2	1.71	0.72
3:D:353:ARG:NH2	5:F:323:GLU:HG2	2.04	0.72
3:D:1165:VAL:HG12	3:D:1205:PRO:HA	1.71	0.72
3:D:1164:ARG:NH2	3:D:1216:ALA:O	2.23	0.72
6:H:15:DT:N3	6:H:16:DC:C4	2.58	0.71
2:C:737:LEU:HB2	2:C:898:ILE:HG12	1.73	0.71
5:F:470:ARG:HB3	5:F:506:ILE:HD13	1.75	0.69
5:F:477:LEU:HD13	5:F:492:ILE:HG23	1.74	0.69
6:H:15:DT:C4	6:H:16:DC:C4	2.80	0.69
2:C:401:ARG:HA	2:C:404:MET:HE2	1.74	0.69
1:B:75:GLU:O	1:B:79:ASN:ND2	2.26	0.69
2:C:1122:LYS:HE2	2:C:1148:ARG:HG2	1.74	0.69
5:F:401:LYS:HA	5:F:405:ILE:HA	1.75	0.68
3:D:353:ARG:HD2	3:D:370:GLU:OE1	1.94	0.68
6:H:20:DG:N2	7:G:8:DC:O2	2.26	0.67
3:D:240:LEU:HD12	3:D:240:LEU:C	2.15	0.67
3:D:473:LYS:HD2	5:F:448:VAL:HG21	1.77	0.67
2:C:189:GLU:HB2	2:C:367:THR:HG21	1.75	0.66
2:C:815:THR:HG22	2:C:817:GLU:H	1.60	0.66
2:C:279:ARG:HD3	5:F:215:ALA:HB1	1.78	0.66
2:C:101:GLY:O	2:C:142:ASN:ND2	2.29	0.65
5:F:522:VAL:HG23	5:F:523:LEU:HD12	1.77	0.65
4:E:38:PRO:HD2	4:E:96:LEU:HD23	1.79	0.65
3:D:930:VAL:HG22	3:D:936:VAL:HG12	1.78	0.65
1:A:87:SER:O	1:A:142:ARG:NH1	2.29	0.64
5:F:470:ARG:HH11	5:F:506:ILE:HD11	1.61	0.64
3:D:442:GLY:HA3	3:D:523:GLN:HB2	1.79	0.64
5:F:242:ASN:OD1	5:F:243:ALA:N	2.31	0.64
5:F:269:ARG:NH1	5:F:271:GLU:OE1	2.30	0.64
3:D:638:THR:HG23	3:D:639:GLN:HG2	1.78	0.63
6:H:15:DT:H2"	6:H:16:DC:H6	1.63	0.63
2:C:1125:LEU:HD22	2:C:1135:VAL:HG11	1.80	0.62
3:D:241:TYR:OH	3:D:254:GLY:HA3	1.99	0.62
3:D:589:THR:HG21	3:D:688:MET:HG2	1.81	0.62
5:F:256:GLY:HA3	5:F:288:GLY:HA3	1.82	0.62

Continued on next page...

Continued from previous page...

Atom-1	Atom-2	Interatomic distance (Å)	Clash overlap (Å)
3:D:595:ASP:HB3	3:D:631:ALA:HB2	1.82	0.62
3:D:365:ILE:HG21	5:F:297:GLU:HG2	1.82	0.61
3:D:913:ASP:OD1	3:D:914:PRO:N	2.33	0.61
3:D:600:GLN:HB2	3:D:609:THR:HB	1.80	0.61
2:C:43:LYS:NZ	2:C:544:ALA:O	2.34	0.60
3:D:921:TYR:O	3:D:981:ARG:NH2	2.34	0.60
3:D:492:ALA:HB3	4:E:90:LYS:HE2	1.82	0.60
2:C:762:THR:HG23	2:C:764:LEU:H	1.67	0.60
3:D:738:VAL:HG13	3:D:841:ARG:HD3	1.84	0.60
6:H:20:DG:H1	7:G:8:DC:N4	2.00	0.60
2:C:168:ILE:HG12	2:C:431:PHE:HB3	1.82	0.60
3:D:1273:GLN:O	4:E:105:GLU:N	2.30	0.60
3:D:901:LEU:HD13	3:D:901:LEU:C	2.23	0.60
3:D:373:MET:O	3:D:377:SER:OG	2.18	0.59
1:B:27:GLU:HG3	1:B:28:PRO:HD2	1.85	0.59
3:D:1274:PRO:HB3	4:E:82:LEU:HD11	1.85	0.59
3:D:241:TYR:CE2	3:D:245:VAL:CG2	2.85	0.59
3:D:1089:PHE:HA	3:D:1095:SER:HA	1.83	0.59
6:H:15:DT:H2"	6:H:16:DC:H5'	1.85	0.58
1:A:152:ASN:HB3	1:A:163:PRO:HB3	1.85	0.58
3:D:473:LYS:HZ3	5:F:448:VAL:HG11	1.67	0.58
6:H:18:DC:H2"	6:H:19:DG:C8	2.39	0.58
2:C:561:VAL:HG21	2:C:571:VAL:HB	1.85	0.58
3:D:104:ILE:HD12	3:D:379:ASP:HB3	1.84	0.58
3:D:130:TYR:OH	3:D:379:ASP:OD2	2.21	0.58
6:H:20:DG:C6	7:G:8:DC:N4	2.60	0.58
3:D:1092:GLU:HG3	3:D:1094:GLY:H	1.67	0.58
3:D:873:LEU:HA	3:D:876:ARG:HE	1.69	0.57
4:E:47:VAL:HG11	4:E:53:LEU:HB2	1.86	0.57
2:C:102:SER:O	2:C:141:ASN:ND2	2.38	0.57
2:C:230:ARG:NH1	7:G:8:DC:OP1	2.38	0.57
3:D:137:THR:OG1	3:D:253:THR:O	2.22	0.57
2:C:318:LYS:NZ	2:C:534:ASP:OD2	2.37	0.57
1:A:214:THR:HA	1:B:230:GLU:HG2	1.87	0.57
3:D:1030:ARG:HH21	3:D:1137:GLU:HG2	1.70	0.57
2:C:1067:ARG:NH2	3:D:415:GLN:O	2.35	0.57
3:D:997:ILE:HD11	3:D:1248:LEU:HD13	1.87	0.57
2:C:48:LEU:HD12	2:C:528:ILE:HD13	1.86	0.56
8:C:1201:RFP:H28C	8:C:1201:RFP:C5	2.35	0.56
5:F:240:LEU:HD21	5:F:301:ARG:HD2	1.87	0.56
2:C:239:LYS:NZ	2:C:265:ASP:OD2	2.37	0.56

Continued on next page...

Continued from previous page...

Atom-1	Atom-2	Interatomic distance (Å)	Clash overlap (Å)
2:C:757:ILE:HD12	2:C:837:LEU:HB2	1.88	0.56
3:D:1085:ARG:HA	3:D:1112:MET:HA	1.88	0.56
4:E:70:GLN:O	4:E:74:GLY:N	2.34	0.56
1:B:72:ASP:OD1	1:B:73:VAL:N	2.38	0.56
3:D:241:TYR:CE2	3:D:245:VAL:HG21	2.41	0.56
3:D:565:ILE:HG23	3:D:575:ALA:HB3	1.87	0.56
3:D:45:GLY:H	3:D:48:CYS:HB2	1.72	0.55
1:A:105:VAL:HG13	1:A:125:ILE:HB	1.88	0.55
3:D:1051:GLY:HA2	3:D:1069:ASP:HB2	1.88	0.55
3:D:903:GLU:O	3:D:911:ILE:N	2.31	0.55
1:A:197:GLU:OE1	2:C:996:ARG:NH1	2.38	0.55
3:D:770:ARG:NH1	3:D:771:ASN:OD1	2.38	0.55
2:C:441:ASP:OD2	2:C:443:ASN:ND2	2.40	0.55
2:C:1045:SER:OG	2:C:1046:THR:N	2.37	0.55
8:C:1201:RFP:C18	8:C:1201:RFP:HN1	2.20	0.55
3:D:343:LEU:HD13	3:D:381:LEU:HA	1.87	0.55
3:D:1030:ARG:NH1	3:D:1033:GLU:OE1	2.39	0.55
1:B:84:VAL:HG12	1:B:199:LYS:HD3	1.89	0.55
1:A:64:THR:OG1	1:A:65:THR:N	2.40	0.55
3:D:676:LEU:HD23	3:D:716:LEU:HD23	1.87	0.55
2:C:150:GLN:HG2	2:C:414:PRO:HG2	1.89	0.54
2:C:473:ARG:NH2	2:C:492:PRO:O	2.40	0.54
5:F:506:ILE:HA	5:F:509:LYS:HD2	1.90	0.54
2:C:348:LEU:HD13	2:C:365:VAL:HG12	1.88	0.54
2:C:475:VAL:O	3:D:854:HIS:ND1	2.35	0.54
3:D:707:ILE:HD11	4:E:32:PRO:HB3	1.89	0.54
2:C:597:LEU:HB3	2:C:976:VAL:HG13	1.88	0.54
3:D:1065:THR:HG23	3:D:1076:VAL:HB	1.90	0.54
5:F:499:THR:OG1	5:F:500:ARG:N	2.39	0.54
2:C:516:TYR:HD2	2:C:531:LEU:HD13	1.71	0.54
2:C:684:ALA:HA	2:C:706:PRO:HG3	1.89	0.54
6:H:15:DT:N3	6:H:16:DC:C5	2.76	0.54
2:C:885:LEU:HD12	2:C:895:ILE:HD11	1.90	0.54
5:F:364:ARG:HG3	5:F:368:ILE:HG12	1.90	0.54
2:C:959:LEU:HD12	2:C:960:PRO:HD2	1.90	0.53
2:C:211:TRP:HB2	2:C:227:ASP:HA	1.90	0.53
2:C:182:SER:HB2	2:C:377:ARG:HB2	1.89	0.53
2:C:211:TRP:NE1	6:H:13:DT:O2	2.41	0.53
2:C:821:LEU:HD22	5:F:456:LEU:HD11	1.90	0.53
7:G:15:DT:H2'	7:G:16:DC:C6	2.44	0.53
3:D:67:ARG:HD2	3:D:69:ARG:NE	2.24	0.53

Continued on next page...

Continued from previous page...

Atom-1	Atom-2	Interatomic distance (Å)	Clash overlap (Å)
3:D:353:ARG:HD2	3:D:370:GLU:CD	2.30	0.53
2:C:513:GLU:HB3	2:C:530:TYR:HB3	1.91	0.53
3:D:890:ASP:OD1	3:D:963:ARG:NH2	2.39	0.53
1:B:178:VAL:HG22	1:B:192:LEU:HD13	1.91	0.52
3:D:965:VAL:HG13	3:D:974:VAL:HG11	1.92	0.52
1:A:213:LYS:HD3	1:B:227:VAL:HG23	1.91	0.52
3:D:353:ARG:HH21	5:F:323:GLU:CD	2.13	0.52
5:F:499:THR:HG23	5:F:500:ARG:HD2	1.92	0.52
2:C:317:ASN:O	2:C:321:GLY:N	2.38	0.52
5:F:345:THR:HB	6:H:4:DA:H8	1.75	0.52
5:F:231:TYR:CE2	5:F:235:ILE:HD11	2.45	0.51
1:A:175:THR:OG1	1:A:176:TYR:N	2.42	0.51
3:D:459:ARG:HA	3:D:462:ASP:HB2	1.92	0.51
3:D:1055:LEU:HB2	3:D:1101:ASP:HB3	1.91	0.51
3:D:1139:GLN:O	3:D:1143:ARG:HG2	2.09	0.51
6:H:20:DG:N1	7:G:8:DC:N4	2.56	0.51
2:C:484:CYS:HB2	2:C:588:SER:HB3	1.93	0.51
1:A:129:ASN:ND2	2:C:652:GLU:HG3	2.25	0.51
3:D:384:ASN:HB2	3:D:401:SER:HB3	1.93	0.51
5:F:474:VAL:HA	5:F:477:LEU:HD12	1.92	0.51
3:D:1090:LYS:HG2	3:D:1091:HIS:H	1.75	0.51
2:C:126:ASP:HA	2:C:170:GLY:HA3	1.93	0.51
2:C:472:VAL:HG22	6:H:14:DG:N2	2.25	0.51
3:D:353:ARG:CD	3:D:370:GLU:OE2	2.58	0.51
2:C:232:GLN:OE1	2:C:280:LYS:HG3	2.11	0.50
2:C:599:HIS:ND1	3:D:840:PHE:O	2.38	0.50
2:C:1055:GLN:HG2	2:C:1094:ASP:HB3	1.92	0.50
2:C:185:VAL:HG12	2:C:316:VAL:HG22	1.93	0.50
3:D:438:LEU:O	3:D:561:SER:OG	2.27	0.50
2:C:1148:ARG:NH1	3:D:86:LYS:HG3	2.26	0.50
3:D:373:MET:SD	5:F:318:LEU:HB3	2.52	0.50
2:C:1148:ARG:NH1	3:D:86:LYS:O	2.45	0.50
2:C:658:ILE:HD11	2:C:688:PRO:HB3	1.94	0.50
3:D:798:PRO:HA	3:D:801:THR:HB	1.94	0.50
5:F:344:SER:OG	6:H:5:DA:OP2	2.24	0.50
3:D:102:THR:HG22	3:D:313:VAL:HG22	1.93	0.50
5:F:467:LEU:HD21	5:F:514:LEU:HD21	1.93	0.49
2:C:540:VAL:HG13	2:C:561:VAL:HG13	1.94	0.49
6:H:15:DT:C2'	6:H:16:DC:H6	2.25	0.49
2:C:587:VAL:HB	2:C:591:THR:HB	1.94	0.49
3:D:1164:ARG:HD2	3:D:1208:MET:HE1	1.95	0.49

Continued on next page...

Continued from previous page...

Atom-1	Atom-2	Interatomic distance (Å)	Clash overlap (Å)
3:D:760:PHE:CG	3:D:770:ARG:HD2	2.48	0.49
5:F:505:GLN:HG3	5:F:509:LYS:HE3	1.94	0.49
3:D:1170:SER:O	3:D:1173:THR:OG1	2.28	0.49
2:C:1112:ILE:HG13	3:D:548:SER:HA	1.94	0.49
3:D:139:VAL:HG12	3:D:231:PRO:HD3	1.95	0.49
3:D:95:ILE:HD13	3:D:348:ILE:HG12	1.95	0.48
3:D:834:ARG:HH22	3:D:848:GLU:HA	1.77	0.48
3:D:925:LEU:HD12	3:D:962:VAL:HG12	1.96	0.48
5:F:386:LEU:HD12	5:F:399:LEU:HD23	1.95	0.48
2:C:944:TRP:NE1	2:C:963:LEU:O	2.45	0.48
3:D:354:LEU:C	3:D:354:LEU:HD12	2.32	0.48
4:E:46:ARG:NE	4:E:102:ASP:OD1	2.36	0.48
6:H:20:DG:C2	7:G:8:DC:N3	2.81	0.48
1:B:173:LYS:HE3	1:B:175:THR:HG23	1.94	0.48
3:D:341:ASN:O	3:D:345:ARG:HB2	2.13	0.48
2:C:598:GLU:HA	3:D:849:TYR:CE1	2.49	0.48
3:D:889:HIS:O	3:D:977:THR:OG1	2.25	0.48
1:A:97:LEU:HD21	1:A:105:VAL:HG21	1.96	0.48
3:D:184:LEU:HD12	3:D:197:VAL:HG21	1.95	0.48
2:C:549:ASP:HB3	2:C:553:ARG:H	1.80	0.47
2:C:599:HIS:HB3	2:C:928:ILE:HD12	1.95	0.47
2:C:40:SER:HB2	2:C:973:SER:HB2	1.96	0.47
3:D:1228:GLU:OE2	3:D:1231:ARG:NH1	2.47	0.47
3:D:215:GLU:OE1	3:D:218:ARG:NH1	2.44	0.47
3:D:884:VAL:HG11	3:D:1156:VAL:HG13	1.96	0.47
6:H:22:DT:H1'	6:H:23:DG:H5'	1.95	0.47
2:C:447:SER:HA	2:C:613:ARG:HG3	1.96	0.47
2:C:88:GLU:CD	2:C:310:ARG:HH12	2.18	0.47
3:D:407:LYS:HE2	3:D:1230:THR:HG21	1.96	0.47
3:D:910:LEU:HD12	3:D:910:LEU:C	2.34	0.47
4:E:95:ALA:O	4:E:99:ILE:HG13	2.14	0.47
2:C:1051:MET:HA	5:F:441:ASP:HB2	1.96	0.47
2:C:809:LYS:HD2	2:C:833:ARG:HD3	1.96	0.47
3:D:190:LYS:HE3	3:D:192:ASP:HB3	1.95	0.47
3:D:369:ASN:O	3:D:373:MET:HG3	2.13	0.47
6:H:11:DG:H5''	6:H:12:DC:C4	2.50	0.47
2:C:615:ALA:HB3	2:C:715:LEU:HD22	1.97	0.47
3:D:724:ALA:O	3:D:727:SER:OG	2.28	0.47
1:A:225:LEU:HD13	1:A:225:LEU:H	1.80	0.47
1:B:42:LEU:HD23	1:B:211:ALA:CB	2.45	0.47
2:C:653:VAL:HG23	2:C:658:ILE:HG12	1.96	0.47

Continued on next page...

Continued from previous page...

Atom-1	Atom-2	Interatomic distance (Å)	Clash overlap (Å)
3:D:1054:ARG:HB3	3:D:1065:THR:HB	1.96	0.47
2:C:1119:GLU:OE2	3:D:89:ARG:NH2	2.48	0.47
1:B:170:PRO:HA	1:B:199:LYS:HD2	1.96	0.47
8:C:1201:RFP:O12	8:C:1201:RFP:O4	2.29	0.47
3:D:353:ARG:HD3	5:F:322:GLN:HB3	1.97	0.47
8:C:1201:RFP:H28C	8:C:1201:RFP:H341	1.59	0.47
2:C:598:GLU:HA	3:D:849:TYR:HE1	1.80	0.46
3:D:823:LEU:HD13	3:D:831:PHE:HB3	1.96	0.46
5:F:342:LYS:HE2	5:F:342:LYS:HB3	1.70	0.46
3:D:308:SER:HA	3:D:309:PRO:HD3	1.80	0.46
1:A:62:GLU:HG3	1:A:77:ILE:HD12	1.96	0.46
2:C:818:GLU:OE2	2:C:822:ARG:NH1	2.48	0.46
5:F:317:PHE:O	5:F:321:ILE:HG13	2.15	0.46
5:F:515:ARG:O	5:F:519:ARG:N	2.46	0.46
1:B:90:ASP:HA	1:B:142:ARG:HD3	1.96	0.46
3:D:101:VAL:HG23	3:D:375:GLN:CD	2.36	0.46
2:C:723:ILE:O	3:D:730:THR:HG23	2.16	0.46
3:D:745:ILE:HD13	3:D:784:GLU:HG2	1.97	0.46
8:C:1201:RFP:H342	8:C:1201:RFP:H24C	1.61	0.46
3:D:915:TYR:HA	3:D:1143:ARG:HH12	1.79	0.46
3:D:235:ILE:HD12	3:D:241:TYR:HD1	1.80	0.46
3:D:717:LYS:HE2	3:D:717:LYS:HB3	1.80	0.46
6:H:15:DT:N1	6:H:16:DC:C5	2.82	0.46
3:D:891:CYS:O	3:D:892:GLN:HB2	2.15	0.46
2:C:758:ASP:N	2:C:758:ASP:OD1	2.49	0.46
5:F:231:TYR:O	5:F:235:ILE:HG13	2.15	0.46
2:C:1137:VAL:HG21	2:C:1147:LEU:HD11	1.97	0.46
2:C:974:THR:HG23	2:C:980:ALA:H	1.81	0.45
3:D:473:LYS:NZ	5:F:448:VAL:HG11	2.31	0.45
1:A:149:ALA:N	1:A:165:ASP:OD2	2.44	0.45
2:C:877:ARG:HH12	2:C:1039:ASP:CG	2.20	0.45
3:D:127:LYS:HA	3:D:132:ALA:HB3	1.98	0.45
3:D:67:ARG:HB3	3:D:69:ARG:HG2	1.97	0.45
3:D:834:ARG:NH2	3:D:847:LEU:HG	2.31	0.45
1:B:212:GLY:O	1:B:216:VAL:HG23	2.16	0.45
3:D:1245:LEU:HD13	3:D:1254:ILE:HD13	1.98	0.45
5:F:378:LYS:HD3	5:F:381:ARG:HH11	1.82	0.45
1:A:185:GLN:HG2	1:A:186:ARG:H	1.82	0.45
3:D:457:MET:HE3	3:D:457:MET:HB2	1.78	0.45
5:F:262:LEU:O	5:F:266:LEU:HG	2.16	0.45
2:C:104:SER:HB3	2:C:140:ILE:HB	1.98	0.45

Continued on next page...

Continued from previous page...

Atom-1	Atom-2	Interatomic distance (Å)	Clash overlap (Å)
3:D:158:GLU:OE2	3:D:247:ARG:NH2	2.47	0.45
3:D:899:VAL:HG11	3:D:920:ALA:HB2	1.97	0.45
2:C:233:PRO:HB2	2:C:236:VAL:HG23	1.99	0.45
2:C:1055:GLN:NE2	3:D:420:LYS:HG2	2.32	0.45
1:A:98:ARG:HG2	1:A:135:GLU:HG3	1.99	0.45
2:C:220:ASP:HB3	2:C:257:ILE:HG22	1.98	0.45
3:D:266:GLU:HA	3:D:310:MET:HE1	1.97	0.45
3:D:353:ARG:NH2	5:F:323:GLU:OE2	2.49	0.45
6:H:15:DT:C2'	6:H:16:DC:C6	3.00	0.45
2:C:1141:ASP:OD1	2:C:1142:GLY:N	2.49	0.45
2:C:183:PRO:HB2	2:C:312:GLY:HA2	1.98	0.45
2:C:46:GLU:N	2:C:47:PRO:HD3	2.31	0.45
2:C:50:VAL:O	2:C:633:ARG:NH1	2.47	0.45
2:C:731:TYR:HE1	3:D:579:LEU:HB2	1.81	0.45
3:D:1120:GLU:HA	3:D:1123:ARG:HG2	1.98	0.45
1:A:37:SER:O	1:A:41:THR:OG1	2.33	0.45
2:C:165:THR:HG22	2:C:452:LYS:HE2	1.99	0.45
3:D:321:PRO:HA	3:D:322:PRO:HD3	1.75	0.45
2:C:1119:GLU:O	2:C:1123:VAL:HG23	2.17	0.45
1:B:45:SER:OG	1:B:214:THR:HG21	2.16	0.44
2:C:476:HIS:CG	2:C:477:PRO:HD2	2.53	0.44
5:F:299:ASN:OD1	6:H:6:DT:N3	2.39	0.44
1:A:42:LEU:HA	1:A:46:ILE:HG12	1.99	0.44
1:A:5:GLN:HG2	1:B:144:ARG:HH21	1.82	0.44
2:C:1020:PRO:HB2	2:C:1021:TYR:CD2	2.52	0.44
2:C:658:ILE:HG21	2:C:702:ILE:HD12	2.00	0.44
3:D:588:LEU:HD12	3:D:589:THR:HG23	1.99	0.44
5:F:468:SER:HB3	5:F:471:GLU:HG3	2.00	0.44
3:D:36:TYR:CZ	3:D:37:ARG:HG3	2.52	0.44
1:A:45:SER:HG	1:B:30:PHE:HE2	1.65	0.44
2:C:1088:LEU:HD22	2:C:1092:LYS:HD2	1.98	0.44
2:C:344:TYR:OH	2:C:364:PRO:O	2.34	0.44
3:D:1176:LEU:H	3:D:1176:LEU:HD12	1.81	0.44
3:D:34:ILE:HG22	3:D:41:PRO:HA	1.99	0.44
2:C:206:PRO:HA	2:C:308:LEU:HD23	1.98	0.44
2:C:1041:ILE:HD11	3:D:447:MET:HG3	1.99	0.44
2:C:641:VAL:HG11	2:C:708:THR:HG21	1.98	0.44
2:C:922:VAL:H	2:C:923:PRO:HD2	1.83	0.44
2:C:928:ILE:H	2:C:928:ILE:HG13	1.52	0.44
3:D:927:THR:OG1	3:D:961:LYS:HD3	2.17	0.44
2:C:704:ASP:HB2	2:C:708:THR:HB	1.99	0.44

Continued on next page...

Continued from previous page...

Atom-1	Atom-2	Interatomic distance (Å)	Clash overlap (Å)
2:C:1050:SER:N	2:C:1055:GLN:O	2.36	0.43
2:C:319:LYS:HE3	2:C:344:TYR:CZ	2.53	0.43
2:C:600:ASP:OD2	2:C:889:HIS:ND1	2.41	0.43
2:C:1042:HIS:HB2	2:C:1060:LYS:HG3	2.00	0.43
2:C:1089:LEU:HD12	3:D:1252:VAL:HG13	1.99	0.43
2:C:314:TYR:CZ	2:C:318:LYS:HD3	2.53	0.43
3:D:107:PHE:CZ	3:D:126:GLU:HG2	2.39	0.43
4:E:84:GLU:H	4:E:84:GLU:CD	2.21	0.43
2:C:927:ASN:O	2:C:930:GLN:HG2	2.18	0.43
3:D:525:HIS:O	3:D:528:VAL:HG22	2.18	0.43
3:D:580:ASP:N	3:D:580:ASP:OD1	2.51	0.43
3:D:642:PRO:HG2	3:D:647:GLU:HB2	1.99	0.43
4:E:84:GLU:O	4:E:97:ARG:NH2	2.49	0.43
5:F:347:ALA:O	5:F:351:ILE:HG13	2.17	0.43
5:F:474:VAL:HA	5:F:477:LEU:HB2	1.99	0.43
1:A:56:ILE:HB	1:A:59:VAL:HB	2.00	0.43
7:G:11:DT:H2"	7:G:12:DG:C8	2.54	0.43
6:H:20:DG:H2"	6:H:21:DA:C8	2.53	0.43
2:C:408:ASP:O	2:C:412:ILE:HG13	2.18	0.43
2:C:544:ALA:HB2	2:C:580:ASP:HB2	2.00	0.43
2:C:1079:TYR:CD2	3:D:559:MET:HG2	2.54	0.43
3:D:901:LEU:CD1	3:D:901:LEU:C	2.86	0.43
1:B:110:ILE:O	1:B:112:PRO:HD3	2.19	0.43
2:C:387:ASN:O	2:C:391:VAL:HG23	2.18	0.43
2:C:815:THR:O	2:C:819:ARG:N	2.42	0.43
2:C:936:LEU:HB2	2:C:985:LEU:HD11	1.99	0.43
5:F:489:LEU:HD23	5:F:489:LEU:H	1.83	0.43
3:D:1003:ILE:O	3:D:1006:PRO:HD2	2.19	0.43
1:A:100:GLN:HG2	1:A:101:GLY:H	1.84	0.43
1:A:181:THR:O	1:A:188:ASP:HA	2.19	0.43
1:B:182:ARG:HA	1:B:187:THR:HA	2.01	0.43
3:D:353:ARG:NH2	5:F:323:GLU:CG	2.66	0.43
5:F:345:THR:HA	6:H:5:DA:N7	2.34	0.43
1:B:11:GLU:HB2	1:B:22:VAL:HB	2.01	0.43
2:C:122:CYS:HA	2:C:127:MET:HG2	2.01	0.43
6:H:15:DT:H2"	6:H:16:DC:C6	2.47	0.43
3:D:1099:LEU:HA	3:D:1099:LEU:HD23	1.83	0.42
2:C:1107:VAL:HG21	5:F:451:VAL:HG11	2.00	0.42
6:H:15:DT:O2	6:H:16:DC:C6	2.72	0.42
3:D:945:GLY:O	3:D:949:ILE:HG12	2.18	0.42
2:C:522:GLY:O	2:C:553:ARG:HA	2.20	0.42

Continued on next page...

Continued from previous page...

Atom-1	Atom-2	Interatomic distance (Å)	Clash overlap (Å)
2:C:549:ASP:HB3	2:C:553:ARG:N	2.35	0.42
3:D:1172:SER:N	3:D:1199:GLU:O	2.33	0.42
2:C:396:MET:HE1	2:C:418:ILE:HG12	2.00	0.42
1:B:112:PRO:HA	1:B:113:PRO:HD3	1.92	0.42
2:C:313:ARG:HH22	2:C:337:ASP:CG	2.22	0.42
2:C:47:PRO:HB2	2:C:581:VAL:HG13	2.02	0.42
3:D:922:ALA:HB3	3:D:1150:HIS:CE1	2.54	0.42
1:A:136:VAL:HG12	1:A:137:GLU:H	1.85	0.42
3:D:117:LEU:HD12	3:D:299:VAL:HG22	2.02	0.42
3:D:409:LYS:O	3:D:415:GLN:HB2	2.19	0.42
2:C:252:PHE:HB3	2:C:258:MET:HG3	2.01	0.42
2:C:721:VAL:HG23	2:C:915:ILE:HG23	2.02	0.42
3:D:797:ASN:HA	3:D:798:PRO:HD3	1.74	0.42
3:D:913:ASP:HB3	3:D:916:ILE:HG13	2.01	0.42
2:C:909:ASP:N	2:C:909:ASP:OD1	2.43	0.42
1:B:42:LEU:HD23	1:B:211:ALA:HB2	2.02	0.42
2:C:38:ARG:HA	2:C:971:ILE:HG13	2.01	0.42
3:D:750:GLU:OE1	3:D:837:LYS:NZ	2.46	0.42
1:B:147:VAL:HA	1:B:148:PRO:HD3	1.92	0.42
3:D:153:ALA:O	3:D:157:VAL:HG23	2.19	0.42
3:D:567:SER:HA	3:D:568:PRO:HD3	1.90	0.42
3:D:756:VAL:HG21	3:D:777:ILE:HD11	2.01	0.42
2:C:974:THR:HG23	2:C:979:GLY:HA3	2.02	0.41
3:D:240:LEU:CD1	3:D:240:LEU:C	2.85	0.41
3:D:353:ARG:CD	3:D:370:GLU:CD	2.89	0.41
3:D:737:LEU:N	3:D:793:TYR:OH	2.32	0.41
3:D:925:LEU:HD11	3:D:960:VAL:HG11	2.02	0.41
2:C:253:GLY:HA2	2:C:259:ARG:HE	1.84	0.41
2:C:687:CYS:HA	2:C:688:PRO:HD3	1.87	0.41
2:C:954:ASP:O	2:C:958:ARG:NH1	2.53	0.41
4:E:38:PRO:HA	4:E:39:PRO:HD3	1.98	0.41
2:C:377:ARG:NH2	2:C:383:GLU:OE1	2.52	0.41
3:D:1166:THR:HB	3:D:1206:VAL:HG21	2.02	0.41
2:C:893:GLY:HA2	3:D:537:ASP:HA	2.02	0.41
1:A:130:ASP:O	1:A:131:LYS:HG2	2.20	0.41
2:C:216:VAL:HG11	2:C:349:HIS:CD2	2.56	0.41
3:D:740:PRO:HD3	3:D:792:HIS:ND1	2.36	0.41
2:C:928:ILE:HG12	3:D:817:LEU:CD1	2.51	0.41
1:A:120:ASN:OD1	1:A:120:ASN:N	2.53	0.41
1:A:223:ARG:HD3	1:B:213:LYS:HB2	2.01	0.41
3:D:353:ARG:HD3	3:D:370:GLU:OE2	2.20	0.41

Continued on next page...

Continued from previous page...

Atom-1	Atom-2	Interatomic distance (Å)	Clash overlap (Å)
3:D:589:THR:HG22	3:D:670:ARG:HG2	2.01	0.41
5:F:446:VAL:HB	5:F:449:ASP:HB2	2.02	0.41
2:C:557:PRO:O	2:C:573:SER:N	2.53	0.41
2:C:817:GLU:OE1	2:C:817:GLU:N	2.53	0.41
3:D:823:LEU:HB3	3:D:831:PHE:HD1	1.85	0.41
2:C:899:LEU:HB3	2:C:903:ASP:HB2	2.03	0.41
3:D:353:ARG:HD2	3:D:370:GLU:OE2	2.20	0.41
3:D:556:ARG:HG3	4:E:35:ILE:HG12	2.02	0.41
1:B:97:LEU:HD22	1:B:110:ILE:HG12	2.01	0.41
2:C:1091:ILE:HB	2:C:1102:VAL:HG21	2.02	0.41
2:C:70:TRP:CH2	2:C:82:PRO:HB2	2.56	0.41
2:C:597:LEU:HD23	2:C:976:VAL:HG11	2.03	0.41
3:D:119:ASP:HB2	3:D:295:ARG:CZ	2.51	0.41
3:D:391:VAL:O	3:D:399:LEU:HG	2.21	0.41
3:D:453:LYS:O	3:D:457:MET:HG3	2.20	0.41
2:C:115:VAL:HG11	2:C:129:TYR:CE1	2.56	0.41
2:C:720:LEU:HD23	2:C:913:VAL:HA	2.03	0.41
3:D:104:ILE:HB	3:D:379:ASP:OD1	2.20	0.41
3:D:1247:GLY:O	3:D:1251:ASN:ND2	2.53	0.41
3:D:478:ARG:HA	3:D:478:ARG:HD3	1.91	0.41
3:D:772:GLU:O	3:D:776:GLU:HG2	2.21	0.41
5:F:278:ARG:O	5:F:282:MET:HB2	2.21	0.41
3:D:114:LEU:HB3	3:D:125:LEU:HD21	2.03	0.41
3:D:781:ALA:O	3:D:785:VAL:HG23	2.21	0.41
5:F:231:TYR:HE2	5:F:321:ILE:HG21	1.86	0.41
5:F:335:PHE:CE1	5:F:343:PHE:HA	2.55	0.41
5:F:503:ILE:HA	5:F:503:ILE:HD12	1.91	0.41
2:C:515:PRO:HB2	2:C:581:VAL:HG21	2.02	0.41
3:D:1110:GLN:NE2	3:D:1112:MET:O	2.51	0.41
3:D:46:LEU:O	3:D:325:ARG:NH2	2.34	0.41
3:D:57:ASP:HB3	3:D:58:TRP:CE3	2.56	0.41
2:C:773:ILE:HD11	2:C:804:GLY:HA2	2.03	0.40
2:C:464:SER:HB3	2:C:467:ARG:HG3	2.02	0.40
2:C:690:VAL:HG11	2:C:696:VAL:HG11	2.02	0.40
2:C:1078:ALA:HB1	3:D:998:VAL:HG22	2.03	0.40
3:D:888:GLU:HG2	3:D:889:HIS:H	1.86	0.40
3:D:350:ARG:NE	5:F:319:ASP:OD1	2.54	0.40
2:C:123:LYS:HA	2:C:170:GLY:HA2	2.02	0.40
2:C:444:ASN:O	2:C:447:SER:HB3	2.22	0.40
2:C:458:LEU:HD13	8:C:1201:RFP:H133	2.03	0.40
3:D:113:ARG:N	3:D:113:ARG:HD2	2.37	0.40

Continued on next page...

Continued from previous page...

Atom-1	Atom-2	Interatomic distance (Å)	Clash overlap (Å)
3:D:392:THR:HB	3:D:396:ASN:HA	2.03	0.40
3:D:877:LEU:O	3:D:880:VAL:HG12	2.22	0.40
6:H:15:DT:O4	6:H:16:DC:N4	2.55	0.40
2:C:344:TYR:OH	2:C:365:VAL:HA	2.22	0.40
3:D:403:SER:O	3:D:407:LYS:HG3	2.21	0.40
3:D:783:ASP:O	3:D:787:GLN:HG2	2.22	0.40

There are no symmetry-related clashes.

5.3 Torsion angles [i](#)

5.3.1 Protein backbone [i](#)

In the following table, the Percentiles column shows the percent Ramachandran outliers of the chain as a percentile score with respect to all X-ray entries followed by that with respect to entries of similar resolution.

The Analysed column shows the number of residues for which the backbone conformation was analysed, and the total number of residues.

Mol	Chain	Analysed	Favoured	Allowed	Outliers	Percentiles	
1	A	222/347 (64%)	210 (95%)	11 (5%)	1 (0%)	32	73
1	B	225/347 (65%)	208 (92%)	16 (7%)	1 (0%)	38	77
2	C	1124/1178 (95%)	1050 (93%)	68 (6%)	6 (0%)	32	73
3	D	1261/1316 (96%)	1194 (95%)	61 (5%)	6 (0%)	32	73
4	E	79/110 (72%)	76 (96%)	3 (4%)	0	100	100
5	F	316/528 (60%)	299 (95%)	16 (5%)	1 (0%)	44	80
All	All	3227/3826 (84%)	3037 (94%)	175 (5%)	15 (0%)	32	73

All (15) Ramachandran outliers are listed below:

Mol	Chain	Res	Type
3	D	678	PRO
2	C	47	PRO
3	D	971	SER
2	C	922	VAL
2	C	1134	ASN
3	D	593	PRO

Continued on next page...

Continued from previous page...

Mol	Chain	Res	Type
1	A	184	GLU
2	C	33	PRO
1	B	35	GLY
2	C	1148	ARG
3	D	607	PRO
3	D	658	PRO
5	F	405	ILE
2	C	46	GLU
3	D	835	PRO

5.3.2 Protein sidechains ⓘ

In the following table, the Percentiles column shows the percent sidechain outliers of the chain as a percentile score with respect to all X-ray entries followed by that with respect to entries of similar resolution.

The Analysed column shows the number of residues for which the sidechain conformation was analysed, and the total number of residues.

Mol	Chain	Analysed	Rotameric	Outliers	Percentiles	
1	A	192/297 (65%)	189 (98%)	3 (2%)	68	86
1	B	192/297 (65%)	192 (100%)	0	100	100
2	C	948/998 (95%)	934 (98%)	14 (2%)	70	87
3	D	1048/1095 (96%)	1027 (98%)	21 (2%)	60	83
4	E	68/90 (76%)	65 (96%)	3 (4%)	33	67
5	F	270/427 (63%)	262 (97%)	8 (3%)	46	75
All	All	2718/3204 (85%)	2669 (98%)	49 (2%)	64	85

All (49) residues with a non-rotameric sidechain are listed below:

Mol	Chain	Res	Type
1	A	159	ILE
1	A	182	ARG
1	A	225	LEU
2	C	44	LEU
2	C	48	LEU
2	C	180	VAL
2	C	185	VAL
2	C	380	THR
2	C	456	SER

Continued on next page...

Continued from previous page...

Mol	Chain	Res	Type
2	C	621	SER
2	C	691	ASP
2	C	835	THR
2	C	854	SER
2	C	1034	HIS
2	C	1037	VAL
2	C	1099	ARG
2	C	1148	ARG
3	D	7	PHE
3	D	60	CYS
3	D	75	CYS
3	D	78	CYS
3	D	82	VAL
3	D	83	THR
3	D	101	VAL
3	D	240	LEU
3	D	305	SER
3	D	377	SER
3	D	503	THR
3	D	582	VAL
3	D	583	THR
3	D	653	HIS
3	D	793	TYR
3	D	849	TYR
3	D	921	TYR
3	D	968	CYS
3	D	978	CYS
3	D	1194	VAL
3	D	1246	ASN
4	E	48	SER
4	E	75	ILE
4	E	106	HIS
5	F	258	TYR
5	F	269	ARG
5	F	361	ASP
5	F	367	ARG
5	F	402	GLU
5	F	425	GLN
5	F	442	SER
5	F	448	VAL

Some sidechains can be flipped to improve hydrogen bonding and reduce clashes. All (8) such sidechains are listed below:

Mol	Chain	Res	Type
2	C	142	ASN
2	C	443	ASN
2	C	543	GLN
2	C	941	HIS
2	C	969	ASN
2	C	1034	HIS
3	D	465	HIS
5	F	415	GLN

5.3.3 RNA [i](#)

There are no RNA molecules in this entry.

5.4 Non-standard residues in protein, DNA, RNA chains [i](#)

There are no non-standard protein/DNA/RNA residues in this entry.

5.5 Carbohydrates [i](#)

There are no carbohydrates in this entry.

5.6 Ligand geometry [i](#)

Of 4 ligands modelled in this entry, 3 are monoatomic - leaving 1 for Mogul analysis.

In the following table, the Counts columns list the number of bonds (or angles) for which Mogul statistics could be retrieved, the number of bonds (or angles) that are observed in the model and the number of bonds (or angles) that are defined in the Chemical Component Dictionary. The Link column lists molecule types, if any, to which the group is linked. The Z score for a bond length (or angle) is the number of standard deviations the observed value is removed from the expected value. A bond length (or angle) with $|Z| > 2$ is considered an outlier worth inspection. RMSZ is the root-mean-square of all Z scores of the bond lengths (or angles).

Mol	Type	Chain	Res	Link	Bond lengths			Bond angles		
					Counts	RMSZ	$\# Z > 2$	Counts	RMSZ	$\# Z > 2$
8	RFP	C	1201	-	62,63,63	2.63	10 (16%)	91,94,94	1.98	14 (15%)

In the following table, the Chirals column lists the number of chiral outliers, the number of chiral centers analysed, the number of these observed in the model and the number defined in the Chemical Component Dictionary. Similar counts are reported in the Torsion and Rings columns. '-' means no outliers of that kind were identified.

Mol	Type	Chain	Res	Link	Chirals	Torsions	Rings
8	RFP	C	1201	-	-	0/60/85/85	0/1/5/5

All (10) bond length outliers are listed below:

Mol	Chain	Res	Type	Atoms	Z	Observed(Å)	Ideal(Å)
8	C	1201	RFP	O7-C25	-4.91	1.37	1.44
8	C	1201	RFP	C12-C11	-2.89	1.40	1.54
8	C	1201	RFP	O9-C23	-2.28	1.37	1.43
8	C	1201	RFP	C6-C7	3.06	1.45	1.39
8	C	1201	RFP	C18-C17	3.40	1.54	1.43
8	C	1201	RFP	C15-N1	4.78	1.46	1.35
8	C	1201	RFP	C3-C43	5.65	1.56	1.46
8	C	1201	RFP	C17-C16	6.25	1.55	1.34
8	C	1201	RFP	C43-N2	10.44	1.50	1.27
8	C	1201	RFP	O4-C11	10.79	1.40	1.21

All (14) bond angle outliers are listed below:

Mol	Chain	Res	Type	Atoms	Z	Observed(°)	Ideal(°)
8	C	1201	RFP	C30-C16-C17	-6.95	105.12	123.44
8	C	1201	RFP	C43-N2-N3	-5.92	109.85	120.40
8	C	1201	RFP	C2-C3-C43	-4.61	116.77	123.29
8	C	1201	RFP	O4-C11-C5	-3.73	123.30	131.84
8	C	1201	RFP	C33-C24-C25	-2.51	106.81	111.43
8	C	1201	RFP	C34-C26-C25	-2.36	107.09	111.43
8	C	1201	RFP	O5-C12-C13	2.05	113.60	106.88
8	C	1201	RFP	C25-O7-C35	2.50	121.64	117.72
8	C	1201	RFP	C37-O6-C27	2.58	119.70	112.98
8	C	1201	RFP	C12-O5-C29	2.99	126.76	118.10
8	C	1201	RFP	C23-C24-C25	3.75	118.60	110.88
8	C	1201	RFP	O7-C35-C36	4.05	118.70	111.10
8	C	1201	RFP	O3-C6-C7	4.46	130.43	121.31
8	C	1201	RFP	C38-N4-C42	8.57	123.60	110.67

There are no chirality outliers.

There are no torsion outliers.

There are no ring outliers.

1 monomer is involved in 6 short contacts:

Mol	Chain	Res	Type	Clashes	Symm-Clashes
8	C	1201	RFP	6	0

5.7 Other polymers [i](#)

There are no such residues in this entry.

5.8 Polymer linkage issues [i](#)

There are no chain breaks in this entry.

6 Fit of model and data [i](#)

6.1 Protein, DNA and RNA chains [i](#)

In the following table, the column labelled ‘#RSRZ> 2’ contains the number (and percentage) of RSRZ outliers, followed by percent RSRZ outliers for the chain as percentile scores relative to all X-ray entries and entries of similar resolution. The OWAB column contains the minimum, median, 95th percentile and maximum values of the occupancy-weighted average B-factor per residue. The column labelled ‘Q< 0.9’ lists the number of (and percentage) of residues with an average occupancy less than 0.9.

Mol	Chain	Analysed	<RSRZ>	#RSRZ>2	OWAB(Å ²)	Q<0.9
1	A	224/347 (64%)	-0.26	0 100 100	18, 62, 126, 158	0
1	B	227/347 (65%)	0.26	3 (1%) 77 68	59, 102, 143, 167	0
2	C	1126/1178 (95%)	-0.41	1 (0%) 95 94	5, 38, 126, 161	0
3	D	1265/1316 (96%)	-0.53	0 100 100	3, 38, 109, 144	0
4	E	81/110 (73%)	-0.43	0 100 100	24, 53, 89, 110	0
5	F	320/528 (60%)	-0.35	2 (0%) 89 84	7, 63, 157, 185	0
6	H	23/23 (100%)	0.18	0 100 100	33, 122, 194, 200	0
7	G	14/16 (87%)	0.96	2 (14%) 3 4	104, 162, 240, 304	0
All	All	3280/3865 (84%)	-0.38	8 (0%) 94 93	3, 48, 131, 304	0

All (8) RSRZ outliers are listed below:

Mol	Chain	Res	Type	RSRZ
7	G	6	DA	3.5
5	F	487	ARG	3.1
7	G	5	DC	2.8
1	B	135	GLU	2.7
5	F	500	ARG	2.5
1	B	62	GLU	2.4
2	C	252	PHE	2.1
1	B	66	VAL	2.1

6.2 Non-standard residues in protein, DNA, RNA chains [i](#)

There are no non-standard protein/DNA/RNA residues in this entry.

6.3 Carbohydrates [i](#)

There are no carbohydrates in this entry.

6.4 Ligands [i](#)

In the following table, the Atoms column lists the number of modelled atoms in the group and the number defined in the chemical component dictionary. LLDF column lists the quality of electron density of the group with respect to its neighbouring residues in protein, DNA or RNA chains. The B-factors column lists the minimum, median, 95th percentile and maximum values of B factors of atoms in the group. The column labelled 'Q< 0.9' lists the number of atoms with occupancy less than 0.9.

Mol	Type	Chain	Res	Atoms	RSCC	RSR	LLDF	B-factors(\AA^2)	Q<0.9
8	RFP	C	1201	59/59	0.96	0.24	0.71	12,23,53,58	0
9	ZN	D	1402	1/1	0.99	0.10	-2.12	44,44,44,44	0
9	ZN	D	1401	1/1	0.99	0.07	-2.52	32,32,32,32	0
10	MG	D	1403	1/1	0.91	0.10	-	3,3,3,3	0

6.5 Other polymers [i](#)

There are no such residues in this entry.