



# wwPDB X-ray Structure Validation Summary Report ⓘ

Dec 18, 2017 – 05:33 PM EST

PDB ID : 5UHT  
Title : Structure of the Thermotoga maritima HK853-BeF3-RR468 complex at pH 5.0  
Authors : Liu, Y.; Rose, J.; Jiang, L.; Zhou, P.  
Deposited on : 2017-01-12  
Resolution : 2.68 Å(reported)

This is a wwPDB X-ray Structure Validation Summary Report for a publicly released PDB entry.

We welcome your comments at [validation@mail.wwpdb.org](mailto:validation@mail.wwpdb.org)

A user guide is available at

<http://wwpdb.org/validation/2016/XrayValidationReportHelp>

with specific help available everywhere you see the ⓘ symbol.

---

The following versions of software and data (see [references ⓘ](#)) were used in the production of this report:

MolProbity : 4.02b-467  
Mogul : 1.7.2 (RC1), CSD as538be (2017)  
Xtriage (Phenix) : 1.9-1692  
EDS : rb-20030736  
Percentile statistics : 20161228.v01 (using entries in the PDB archive December 28th 2016)  
Refmac : 5.8.0135  
CCP4 : 6.5.0  
Ideal geometry (proteins) : Engh & Huber (2001)  
Ideal geometry (DNA, RNA) : Parkinson et al. (1996)  
Validation Pipeline (wwPDB-VP) : rb-20030736

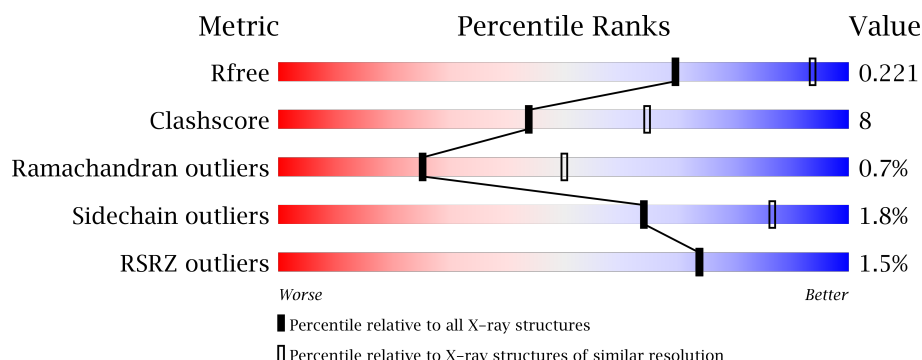
# 1 Overall quality at a glance ⓘ

The following experimental techniques were used to determine the structure:

## *X-RAY DIFFRACTION*

The reported resolution of this entry is 2.68 Å.

Percentile scores (ranging between 0-100) for global validation metrics of the entry are shown in the following graphic. The table shows the number of entries on which the scores are based.



Metric	Whole archive (#Entries)	Similar resolution (#Entries, resolution range(Å))
$R_{free}$	100719	3050 (2.70-2.66)
Clashscore	112137	3418 (2.70-2.66)
Ramachandran outliers	110173	3367 (2.70-2.66)
Sidechain outliers	110143	3367 (2.70-2.66)
RSRZ outliers	101464	3069 (2.70-2.66)

The table below summarises the geometric issues observed across the polymeric chains and their fit to the electron density. The red, orange, yellow and green segments on the lower bar indicate the fraction of residues that contain outliers for  $\geq 3$ , 2, 1 and 0 types of geometric quality criteria. A grey segment represents the fraction of residues that are not modelled. The numeric value for each fraction is indicated below the corresponding segment, with a dot representing fractions  $\leq 5\%$ . The upper red bar (where present) indicates the fraction of residues that have poor fit to the electron density. The numeric value is given above the bar.

Mol	Chain	Length	Quality of chain
1	A	259	<div> <div>0.5%</div> <div>76%</div> <div>15%</div> <div>8%</div> </div>
1	C	259	<div> <div>3%</div> <div>75%</div> <div>16%</div> <div>8%</div> </div>
2	B	122	<div> <div>87%</div> <div>12%</div> <div>1%</div> </div>
2	D	122	<div> <div>0.5%</div> <div>70%</div> <div>28%</div> <div>1%</div> </div>

The following table lists non-polymeric compounds, carbohydrate monomers and non-standard residues in protein, DNA, RNA chains that are outliers for geometric or electron-density-fit criteria.

ria:

Mol	Type	Chain	Res	Chirality	Geometry	Clashes	Electron density
4	GOL	A	502	-	-	-	X
4	GOL	A	503	-	-	-	X
4	GOL	C	502	-	-	-	X

## 2 Entry composition

There are 7 unique types of molecules in this entry. The entry contains 5714 atoms, of which 0 are hydrogens and 0 are deuteriums.

In the tables below, the ZeroOcc column contains the number of atoms modelled with zero occupancy, the AltConf column contains the number of residues with at least one atom in alternate conformation and the Trace column contains the number of residues modelled with at most 2 atoms.

- Molecule 1 is a protein called Sensor histidine kinase.

Mol	Chain	Residues	Atoms					ZeroOcc	AltConf	Trace
1	A	237	Total	C	N	O	S	0	0	0
			1776	1137	301	335	3			
1	C	237	Total	C	N	O	S	0	1	0
			1813	1155	312	343	3			

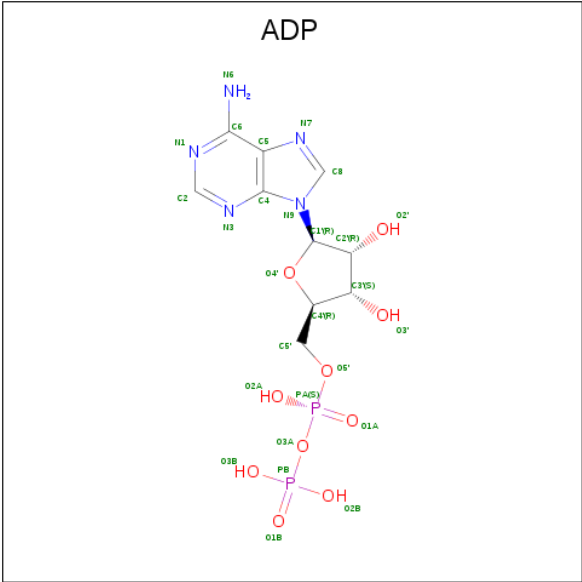
There are 2 discrepancies between the modelled and reference sequences:

Chain	Residue	Modelled	Actual	Comment	Reference
A	231	MET	-	initiating methionine	UNP Q9WZV7
C	231	MET	-	initiating methionine	UNP Q9WZV7

- Molecule 2 is a protein called Response regulator.

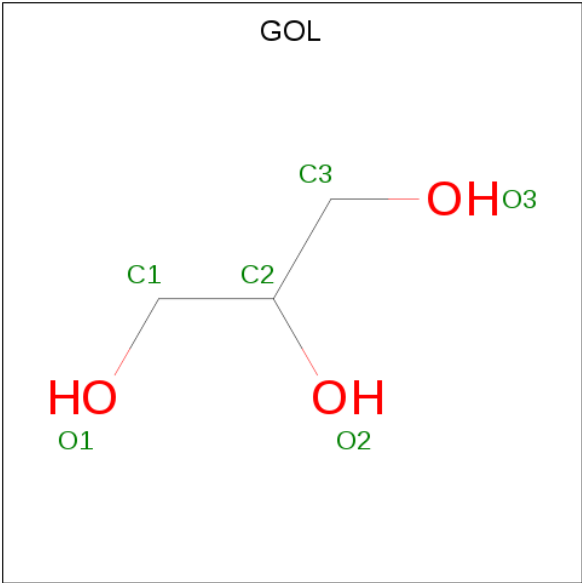
Mol	Chain	Residues	Atoms							ZeroOcc	AltConf	Trace
2	B	121	Total	Be	C	F	N	O	S	0	1	0
			963	1	619	3	155	180	5			
2	D	121	Total	Be	C	F	N	O	S	0	2	0
			947	1	612	3	148	179	4			

- Molecule 3 is ADENOSINE-5'-DIPHOSPHATE (three-letter code: ADP) (formula: C<sub>10</sub>H<sub>15</sub>N<sub>5</sub>O<sub>10</sub>P<sub>2</sub>).



Mol	Chain	Residues	Atoms					ZeroOcc	AltConf
3	A	1	Total	C	N	O	P	0	0
			27	10	5	10	2		
3	C	1	Total	C	N	O	P	0	0
			27	10	5	10	2		

- Molecule 4 is GLYCEROL (three-letter code: GOL) (formula: C<sub>3</sub>H<sub>8</sub>O<sub>3</sub>).



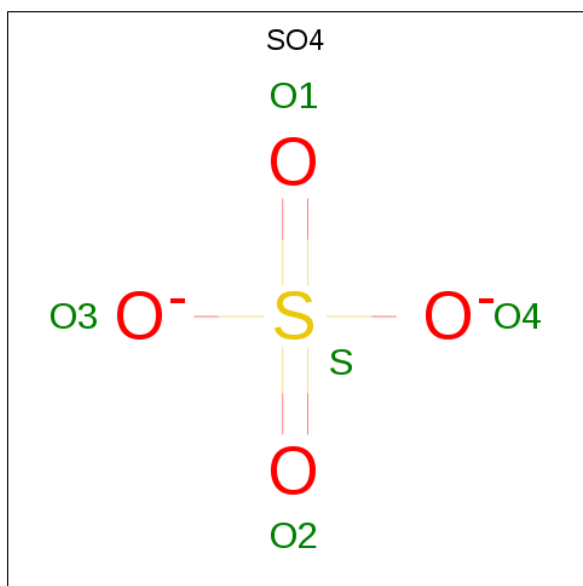
Mol	Chain	Residues	Atoms			ZeroOcc	AltConf
4	A	1	Total	C	O	0	0
			6	3	3		
4	A	1	Total	C	O	0	0
			6	3	3		

Continued on next page...

Continued from previous page...

Mol	Chain	Residues	Atoms			ZeroOcc	AltConf
4	A	1	Total	C	O	0	0
			6	3	3		
4	B	1	Total	C	O	0	0
			6	3	3		
4	B	1	Total	C	O	0	0
			6	3	3		
4	B	1	Total	C	O	0	0
			6	3	3		
4	C	1	Total	C	O	0	0
			6	3	3		
4	C	1	Total	C	O	0	0
			6	3	3		
4	D	1	Total	C	O	0	0
			6	3	3		

- Molecule 5 is SULFATE ION (three-letter code: SO4) (formula: O<sub>4</sub>S).



Mol	Chain	Residues	Atoms			ZeroOcc	AltConf
5	A	1	Total	O	S	0	0
			5	4	1		
5	B	1	Total	O	S	0	0
			5	4	1		
5	D	1	Total	O	S	0	0
			5	4	1		

- Molecule 6 is MAGNESIUM ION (three-letter code: MG) (formula: Mg).

Mol	Chain	Residues	Atoms		ZeroOcc	AltConf
6	B	1	Total 1	Mg 1	0	0
6	D	1	Total 1	Mg 1	0	0

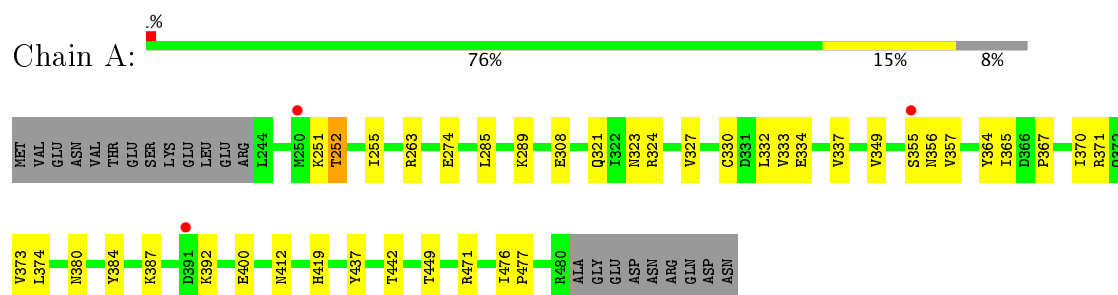
- Molecule 7 is water.

Mol	Chain	Residues	Atoms		ZeroOcc	AltConf
7	A	28	Total 29	O 29	0	1
7	B	17	Total 17	O 17	0	0
7	C	26	Total 27	O 27	0	1
7	D	16	Total 17	O 17	0	1

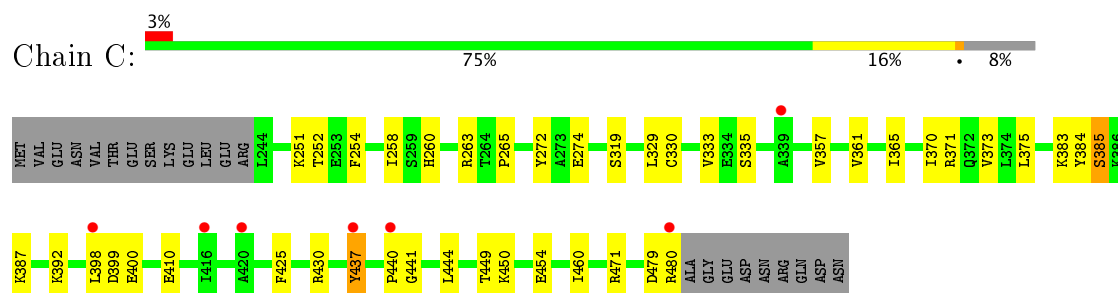
### 3 Residue-property plots [i](#)

These plots are drawn for all protein, RNA and DNA chains in the entry. The first graphic for a chain summarises the proportions of the various outlier classes displayed in the second graphic. The second graphic shows the sequence view annotated by issues in geometry and electron density. Residues are color-coded according to the number of geometric quality criteria for which they contain at least one outlier: green = 0, yellow = 1, orange = 2 and red = 3 or more. A red dot above a residue indicates a poor fit to the electron density ( $RSRZ > 2$ ). Stretches of 2 or more consecutive residues without any outlier are shown as a green connector. Residues present in the sample, but not in the model, are shown in grey.

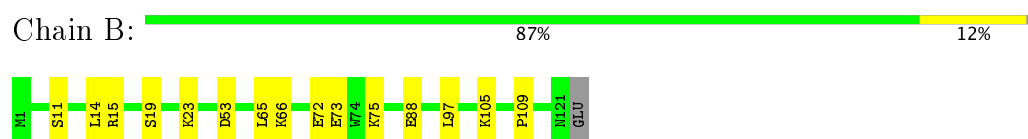
- Molecule 1: Sensor histidine kinase



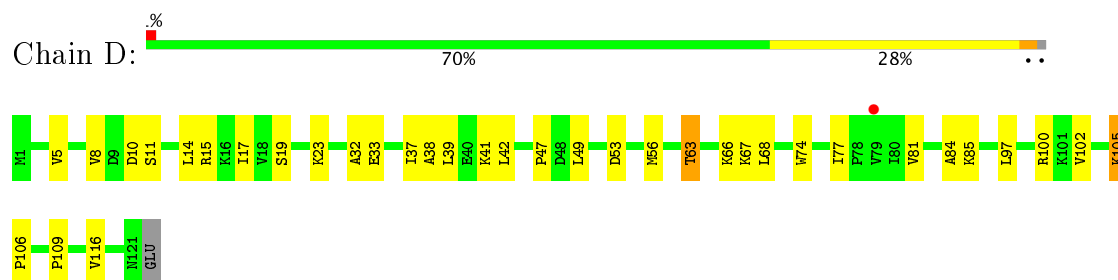
- Molecule 1: Sensor histidine kinase



- Molecule 2: Response regulator



- Molecule 2: Response regulator



## 4 Data and refinement statistics

Property	Value	Source
Space group	C 1 2 1	Depositor
Cell constants a, b, c, $\alpha$ , $\beta$ , $\gamma$	177.97Å 98.38Å 72.05Å 90.00° 110.54° 90.00°	Depositor
Resolution (Å)	49.19 – 2.68 84.72 – 2.68	Depositor EDS
% Data completeness (in resolution range)	100.0 (49.19-2.68) 100.0 (84.72-2.68)	Depositor EDS
$R_{merge}$	0.08	Depositor
$R_{sym}$	(Not available)	Depositor
$\langle I/\sigma(I) \rangle$ <sup>1</sup>	2.56 (at 2.69Å)	Xtriage
Refinement program	PHENIX 1.10.1 _2155	Depositor
R, $R_{free}$	0.182 , 0.222 0.179 , 0.221	Depositor DCC
$R_{free}$ test set	1661 reflections (5.07%)	DCC
Wilson B-factor (Å <sup>2</sup> )	53.2	Xtriage
Anisotropy	0.027	Xtriage
Bulk solvent $k_{sol}$ (e/Å <sup>3</sup> ), $B_{sol}$ (Å <sup>2</sup> )	0.35 , 75.9	EDS
L-test for twinning <sup>2</sup>	$\langle  L  \rangle = 0.49$ , $\langle L^2 \rangle = 0.33$	Xtriage
Estimated twinning fraction	No twinning to report.	Xtriage
$F_o, F_c$ correlation	0.95	EDS
Total number of atoms	5714	wwPDB-VP
Average B, all atoms (Å <sup>2</sup> )	64.0	wwPDB-VP

Xtriage's analysis on translational NCS is as follows: *The largest off-origin peak in the Patterson function is 8.34% of the height of the origin peak. No significant pseudotranslation is detected.*

<sup>1</sup>Intensities estimated from amplitudes.

<sup>2</sup>Theoretical values of  $\langle |L| \rangle$ ,  $\langle L^2 \rangle$  for acentric reflections are 0.5, 0.333 respectively for untwinned datasets, and 0.375, 0.2 for perfectly twinned datasets.

## 5 Model quality [i](#)

### 5.1 Standard geometry [i](#)

Bond lengths and bond angles in the following residue types are not validated in this section: GOL, MG, SO4, ADP, BFD

The Z score for a bond length (or angle) is the number of standard deviations the observed value is removed from the expected value. A bond length (or angle) with  $|Z| > 5$  is considered an outlier worth inspection. RMSZ is the root-mean-square of all Z scores of the bond lengths (or angles).

Mol	Chain	Bond lengths		Bond angles	
		RMSZ	$\# Z  > 5$	RMSZ	$\# Z  > 5$
1	A	0.31	0/1807	0.48	0/2462
1	C	0.29	0/1844	0.47	0/2507
2	B	0.33	0/963	0.52	0/1293
2	D	0.31	0/947	0.50	0/1276
All	All	0.31	0/5561	0.49	0/7538

There are no bond length outliers.

There are no bond angle outliers.

There are no chirality outliers.

There are no planarity outliers.

### 5.2 Too-close contacts [i](#)

In the following table, the Non-H and H(model) columns list the number of non-hydrogen atoms and hydrogen atoms in the chain respectively. The H(added) column lists the number of hydrogen atoms added and optimized by MolProbity. The Clashes column lists the number of clashes within the asymmetric unit, whereas Symm-Clashes lists symmetry related clashes.

Mol	Chain	Non-H	H(model)	H(added)	Clashes	Symm-Clashes
1	A	1776	0	1679	27	0
1	C	1813	0	1742	30	0
2	B	963	0	1000	11	0
2	D	947	0	958	23	0
3	A	27	0	12	0	0
3	C	27	0	12	3	0
4	A	18	0	24	3	0
4	B	18	0	24	0	0
4	C	12	0	16	2	0

*Continued on next page...*

*Continued from previous page...*

Mol	Chain	Non-H	H(model)	H(added)	Clashes	Symm-Clashes
4	D	6	0	8	0	0
5	A	5	0	0	0	0
5	B	5	0	0	0	0
5	D	5	0	0	0	0
6	B	1	0	0	0	0
6	D	1	0	0	0	0
7	A	29	0	0	1	0
7	B	17	0	0	0	0
7	C	27	0	0	0	0
7	D	17	0	0	1	0
All	All	5714	0	5475	84	0

The all-atom clashscore is defined as the number of clashes found per 1000 atoms (including hydrogen atoms). The all-atom clashscore for this structure is 8.

The worst 5 of 84 close contacts within the same asymmetric unit are listed below, sorted by their clash magnitude.

Atom-1	Atom-2	Interatomic distance (Å)	Clash overlap (Å)
1:A:252:THR:OG1	1:C:251:LYS:NZ	2.28	0.66
1:A:380:ASN:HD22	1:A:384:TYR:HE2	1.44	0.65
2:D:39:LEU:HA	2:D:42:LEU:HD13	1.80	0.63
2:D:66:LYS:HB2	2:D:97:LEU:HD22	1.81	0.62
1:C:365:ILE:HD12	1:C:370:ILE:HG13	1.81	0.62

There are no symmetry-related clashes.

## 5.3 Torsion angles [i](#)

### 5.3.1 Protein backbone [i](#)

In the following table, the Percentiles column shows the percent Ramachandran outliers of the chain as a percentile score with respect to all X-ray entries followed by that with respect to entries of similar resolution.

The Analysed column shows the number of residues for which the backbone conformation was analysed, and the total number of residues.

Mol	Chain	Analysed	Favoured	Allowed	Outliers	Percentiles	
1	A	235/259 (91%)	223 (95%)	9 (4%)	3 (1%)	14	32
1	C	236/259 (91%)	221 (94%)	13 (6%)	2 (1%)	22	46

*Continued on next page...*

*Continued from previous page...*

Mol	Chain	Analysed	Favoured	Allowed	Outliers	Percentiles	
2	B	119/122 (98%)	118 (99%)	1 (1%)	0	100	100
2	D	120/122 (98%)	117 (98%)	3 (2%)	0	100	100
All	All	710/762 (93%)	679 (96%)	26 (4%)	5 (1%)	25	50

All (5) Ramachandran outliers are listed below:

Mol	Chain	Res	Type
1	C	437	TYR
1	A	387	LYS
1	A	437	TYR
1	C	387	LYS
1	A	356	ASN

### 5.3.2 Protein sidechains ⓘ

In the following table, the Percentiles column shows the percent sidechain outliers of the chain as a percentile score with respect to all X-ray entries followed by that with respect to entries of similar resolution.

The Analysed column shows the number of residues for which the sidechain conformation was analysed, and the total number of residues.

Mol	Chain	Analysed	Rotameric	Outliers	Percentiles	
1	A	178/233 (76%)	176 (99%)	2 (1%)	78	92
1	C	188/233 (81%)	184 (98%)	4 (2%)	59	84
2	B	106/109 (97%)	106 (100%)	0	100	100
2	D	100/109 (92%)	96 (96%)	4 (4%)	36	64
All	All	572/684 (84%)	562 (98%)	10 (2%)	64	87

5 of 10 residues with a non-rotameric sidechain are listed below:

Mol	Chain	Res	Type
1	C	385	SER
1	C	437	TYR
2	D	63	THR
1	C	319	SER
2	D	14	LEU

Some sidechains can be flipped to improve hydrogen bonding and reduce clashes. All (2) such sidechains are listed below:

Mol	Chain	Res	Type
1	A	323	ASN
1	A	412	ASN

### 5.3.3 RNA ⓘ

There are no RNA molecules in this entry.

## 5.4 Non-standard residues in protein, DNA, RNA chains ⓘ

2 non-standard protein/DNA/RNA residues are modelled in this entry.

In the following table, the Counts columns list the number of bonds (or angles) for which Mogul statistics could be retrieved, the number of bonds (or angles) that are observed in the model and the number of bonds (or angles) that are defined in the Chemical Component Dictionary. The Link column lists molecule types, if any, to which the group is linked. The Z score for a bond length (or angle) is the number of standard deviations the observed value is removed from the expected value. A bond length (or angle) with  $|Z| > 2$  is considered an outlier worth inspection. RMSZ is the root-mean-square of all Z scores of the bond lengths (or angles).

Mol	Type	Chain	Res	Link	Bond lengths			Bond angles		
					Counts	RMSZ	$\# Z  > 2$	Counts	RMSZ	$\# Z  > 2$
2	BFD	B	53	2,6	9,11,12	3.54	3 (33%)	5,15,17	1.47	2 (40%)
2	BFD	D	53	2,6	9,11,12	3.67	3 (33%)	5,15,17	1.44	0

In the following table, the Chirals column lists the number of chiral outliers, the number of chiral centers analysed, the number of these observed in the model and the number defined in the Chemical Component Dictionary. Similar counts are reported in the Torsion and Rings columns. '-' means no outliers of that kind were identified.

Mol	Type	Chain	Res	Link	Chirals	Torsions	Rings
2	BFD	B	53	2,6	-	0/4/11/13	0/0/0/0
2	BFD	D	53	2,6	-	0/4/11/13	0/0/0/0

The worst 5 of 6 bond length outliers are listed below:

Mol	Chain	Res	Type	Atoms	Z	Observed(Å)	Ideal(Å)
2	D	53	BFD	F1-BE	-6.30	1.38	1.54
2	D	53	BFD	F3-BE	-6.16	1.38	1.54
2	D	53	BFD	F2-BE	-5.98	1.38	1.54
2	B	53	BFD	F3-BE	-5.94	1.38	1.54
2	B	53	BFD	F1-BE	-5.93	1.38	1.54

All (2) bond angle outliers are listed below:

Mol	Chain	Res	Type	Atoms	Z	Observed(°)	Ideal(°)
2	B	53	BFD	OD2-CG-CB	-2.32	119.48	124.70
2	B	53	BFD	O-C-CA	-2.01	119.47	125.02

There are no chirality outliers.

There are no torsion outliers.

There are no ring outliers.

2 monomers are involved in 2 short contacts:

Mol	Chain	Res	Type	Clashes	Symm-Clashes
2	B	53	BFD	1	0
2	D	53	BFD	1	0

## 5.5 Carbohydrates [i](#)

There are no carbohydrates in this entry.

## 5.6 Ligand geometry [i](#)

Of 16 ligands modelled in this entry, 2 are monoatomic - leaving 14 for Mogul analysis.

In the following table, the Counts columns list the number of bonds (or angles) for which Mogul statistics could be retrieved, the number of bonds (or angles) that are observed in the model and the number of bonds (or angles) that are defined in the Chemical Component Dictionary. The Link column lists molecule types, if any, to which the group is linked. The Z score for a bond length (or angle) is the number of standard deviations the observed value is removed from the expected value. A bond length (or angle) with  $|Z| > 2$  is considered an outlier worth inspection. RMSZ is the root-mean-square of all Z scores of the bond lengths (or angles).

Mol	Type	Chain	Res	Link	Bond lengths			Bond angles		
					Counts	RMSZ	$\# Z  > 2$	Counts	RMSZ	$\# Z  > 2$
3	ADP	A	501	-	25,29,29	1.00	1 (4%)	24,45,45	1.75	3 (12%)
4	GOL	A	502	-	5,5,5	0.38	0	5,5,5	0.42	0
4	GOL	A	503	-	5,5,5	0.35	0	5,5,5	0.25	0
4	GOL	A	504	-	5,5,5	0.36	0	5,5,5	0.25	0
5	SO4	A	505	-	4,4,4	0.17	0	6,6,6	0.10	0
4	GOL	B	201	-	5,5,5	0.30	0	5,5,5	0.23	0
4	GOL	B	202	-	5,5,5	0.33	0	5,5,5	0.47	0
4	GOL	B	203	-	5,5,5	0.34	0	5,5,5	0.29	0
5	SO4	B	205	-	4,4,4	0.14	0	6,6,6	0.13	0

Mol	Type	Chain	Res	Link	Bond lengths			Bond angles		
					Counts	RMSZ	# Z  > 2	Counts	RMSZ	# Z  > 2
3	ADP	C	501	-	25,29,29	1.06	2 (8%)	24,45,45	1.84	4 (16%)
4	GOL	C	502	-	5,5,5	0.35	0	5,5,5	0.22	0
4	GOL	C	503	-	5,5,5	0.33	0	5,5,5	0.31	0
4	GOL	D	201	-	5,5,5	0.39	0	5,5,5	0.29	0
5	SO4	D	203	-	4,4,4	0.16	0	6,6,6	0.10	0

In the following table, the Chirals column lists the number of chiral outliers, the number of chiral centers analysed, the number of these observed in the model and the number defined in the Chemical Component Dictionary. Similar counts are reported in the Torsion and Rings columns. '-' means no outliers of that kind were identified.

Mol	Type	Chain	Res	Link	Chirals	Torsions	Rings
3	ADP	A	501	-	-	0/12/32/32	0/3/3/3
4	GOL	A	502	-	-	0/4/4/4	0/0/0/0
4	GOL	A	503	-	-	0/4/4/4	0/0/0/0
4	GOL	A	504	-	-	0/4/4/4	0/0/0/0
5	SO4	A	505	-	-	0/0/0/0	0/0/0/0
4	GOL	B	201	-	-	0/4/4/4	0/0/0/0
4	GOL	B	202	-	-	0/4/4/4	0/0/0/0
4	GOL	B	203	-	-	0/4/4/4	0/0/0/0
5	SO4	B	205	-	-	0/0/0/0	0/0/0/0
3	ADP	C	501	-	-	0/12/32/32	0/3/3/3
4	GOL	C	502	-	-	0/4/4/4	0/0/0/0
4	GOL	C	503	-	-	0/4/4/4	0/0/0/0
4	GOL	D	201	-	-	0/4/4/4	0/0/0/0
5	SO4	D	203	-	-	0/0/0/0	0/0/0/0

All (3) bond length outliers are listed below:

Mol	Chain	Res	Type	Atoms	Z	Observed(Å)	Ideal(Å)
3	C	501	ADP	C2'-C1'	-2.03	1.50	1.53
3	C	501	ADP	C5-C4	3.09	1.47	1.40
3	A	501	ADP	C5-C4	3.11	1.47	1.40

The worst 5 of 7 bond angle outliers are listed below:

Mol	Chain	Res	Type	Atoms	Z	Observed(°)	Ideal(°)
3	A	501	ADP	N3-C2-N1	-6.29	123.38	128.86
3	C	501	ADP	N3-C2-N1	-6.11	123.53	128.86
3	A	501	ADP	C4-C5-N7	-2.99	106.52	109.41
3	C	501	ADP	O3'-C3'-C2'	-2.74	103.07	111.83
3	C	501	ADP	O2'-C2'-C3'	-2.56	103.64	111.83

There are no chirality outliers.

There are no torsion outliers.

There are no ring outliers.

6 monomers are involved in 8 short contacts:

Mol	Chain	Res	Type	Clashes	Symm-Clashes
4	A	502	GOL	1	0
4	A	503	GOL	1	0
4	A	504	GOL	1	0
3	C	501	ADP	3	0
4	C	502	GOL	1	0
4	C	503	GOL	1	0

## 5.7 Other polymers [i](#)

There are no such residues in this entry.

## 5.8 Polymer linkage issues [i](#)

There are no chain breaks in this entry.

## 6 Fit of model and data [i](#)

### 6.1 Protein, DNA and RNA chains [i](#)

In the following table, the column labelled ‘#RSRZ> 2’ contains the number (and percentage) of RSRZ outliers, followed by percent RSRZ outliers for the chain as percentile scores relative to all X-ray entries and entries of similar resolution. The OWAB column contains the minimum, median, 95<sup>th</sup> percentile and maximum values of the occupancy-weighted average B-factor per residue. The column labelled ‘Q< 0.9’ lists the number of (and percentage) of residues with an average occupancy less than 0.9.

Mol	Chain	Analysed	<RSRZ>	#RSRZ>2	OWAB(Å <sup>2</sup> )	Q<0.9
1	A	237/259 (91%)	0.30	3 (1%) 77 77	25, 68, 108, 141	7 (2%)
1	C	237/259 (91%)	0.32	7 (2%) 51 50	25, 69, 103, 129	7 (2%)
2	B	120/122 (98%)	0.14	0 100 100	27, 55, 97, 108	0
2	D	120/122 (98%)	0.20	1 (0%) 86 86	31, 57, 93, 109	0
All	All	714/762 (93%)	0.26	11 (1%) 74 74	25, 62, 104, 141	14 (1%)

The worst 5 of 11 RSRZ outliers are listed below:

Mol	Chain	Res	Type	RSRZ
1	C	440	PRO	3.5
1	C	420	ALA	3.1
1	C	437	TYR	2.8
1	C	480	ARG	2.3
1	A	355	SER	2.3

### 6.2 Non-standard residues in protein, DNA, RNA chains [i](#)

In the following table, the Atoms column lists the number of modelled atoms in the group and the number defined in the chemical component dictionary. LLDF column lists the quality of electron density of the group with respect to its neighbouring residues in protein, DNA or RNA chains. The B-factors column lists the minimum, median, 95<sup>th</sup> percentile and maximum values of B factors of atoms in the group. The column labelled ‘Q< 0.9’ lists the number of atoms with occupancy less than 0.9.

Mol	Type	Chain	Res	Atoms	RSCC	RSR	LLDF	B-factors(Å <sup>2</sup> )	Q<0.9
2	BFD	D	53	12/13	0.95	0.15	-	23,42,50,54	0
2	BFD	B	53	12/13	0.96	0.14	-	25,35,44,45	0

### 6.3 Carbohydrates [i](#)

There are no carbohydrates in this entry.

### 6.4 Ligands [i](#)

In the following table, the Atoms column lists the number of modelled atoms in the group and the number defined in the chemical component dictionary. LLDF column lists the quality of electron density of the group with respect to its neighbouring residues in protein, DNA or RNA chains. The B-factors column lists the minimum, median, 95<sup>th</sup> percentile and maximum values of B factors of atoms in the group. The column labelled 'Q< 0.9' lists the number of atoms with occupancy less than 0.9.

Mol	Type	Chain	Res	Atoms	RSCC	RSR	LLDF	B-factors(Å <sup>2</sup> )	Q<0.9
4	GOL	A	503	6/6	0.69	0.37	6.27	89,96,98,98	0
4	GOL	A	502	6/6	0.93	0.30	4.27	56,58,62,65	0
4	GOL	C	502	6/6	0.76	0.38	3.80	86,88,92,94	0
4	GOL	A	504	6/6	0.64	0.26	1.23	93,99,101,102	0
3	ADP	C	501	27/27	0.97	0.20	-0.39	52,63,81,91	0
4	GOL	C	503	6/6	0.89	0.18	-0.60	78,80,87,88	0
3	ADP	A	501	27/27	0.96	0.17	-0.89	43,60,75,83	0
4	GOL	B	202	6/6	0.91	0.16	-1.21	89,98,100,102	0
5	SO4	A	505	5/5	0.91	0.12	-1.64	107,108,109,109	0
5	SO4	D	203	5/5	0.96	0.13	-1.71	85,86,88,90	0
5	SO4	B	205	5/5	0.96	0.18	-	62,66,69,71	5
4	GOL	B	201	6/6	0.86	0.25	-	53,84,91,92	0
4	GOL	B	203	6/6	0.73	0.29	-	101,103,106,107	0
6	MG	D	202	1/1	0.96	0.11	-	32,32,32,32	0
4	GOL	D	201	6/6	0.81	0.19	-	82,86,90,91	0
6	MG	B	204	1/1	0.93	0.11	-	37,37,37,37	0

### 6.5 Other polymers [i](#)

There are no such residues in this entry.