



wwPDB X-ray Structure Validation Summary Report ⓘ

Nov 2, 2017 – 06:25 PM EDT

PDB ID : 3UIE
Title : Crystal structure of adenosine 5'-phosphosulfate kinase from Arabidopsis Thaliana in Complex with AMPPNP and APS
Authors : Ravilious, G.E.; Jez, J.M.
Deposited on : unknown
Resolution : 1.79 Å(reported)

This is a wwPDB X-ray Structure Validation Summary Report for a publicly released PDB entry.

We welcome your comments at validation@mail.wwpdb.org

A user guide is available at

<http://wwpdb.org/validation/2016/XrayValidationReportHelp>

with specific help available everywhere you see the ⓘ symbol.

The following versions of software and data (see [references ⓘ](#)) were used in the production of this report:

MolProbity : 4.02b-467
Mogul : 1.7.2 (RC1), CSD as538be (2017)
Xtriage (Phenix) : 1.9-1692
EDS : rb-20030345
Percentile statistics : 20161228.v01 (using entries in the PDB archive December 28th 2016)
Refmac : 5.8.0135
CCP4 : 6.5.0
Ideal geometry (proteins) : Engh & Huber (2001)
Ideal geometry (DNA, RNA) : Parkinson et al. (1996)
Validation Pipeline (wwPDB-VP) : rb-20030345

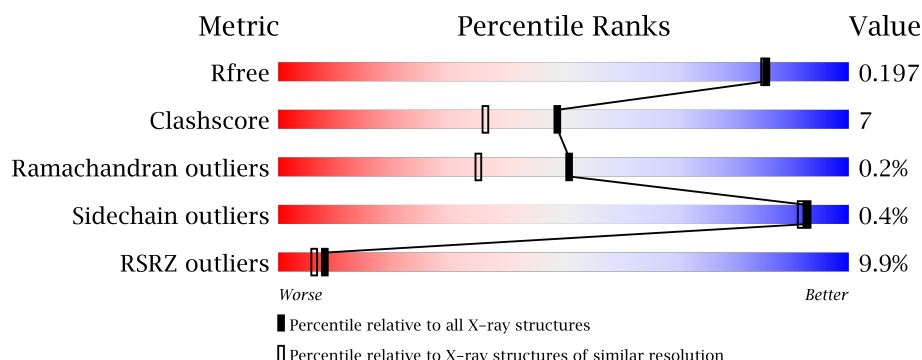
1 Overall quality at a glance

The following experimental techniques were used to determine the structure:

X-RAY DIFFRACTION

The reported resolution of this entry is 1.79 Å.

Percentile scores (ranging between 0-100) for global validation metrics of the entry are shown in the following graphic. The table shows the number of entries on which the scores are based.



Metric	Whole archive (#Entries)	Similar resolution (#Entries, resolution range(Å))
R_{free}	100719	4827 (1.80-1.80)
Clashscore	112137	5742 (1.80-1.80)
Ramachandran outliers	110173	5676 (1.80-1.80)
Sidechain outliers	110143	5675 (1.80-1.80)
RSRZ outliers	101464	4906 (1.80-1.80)

The table below summarises the geometric issues observed across the polymeric chains and their fit to the electron density. The red, orange, yellow and green segments on the lower bar indicate the fraction of residues that contain outliers for ≥ 3 , 2, 1 and 0 types of geometric quality criteria. A grey segment represents the fraction of residues that are not modelled. The numeric value for each fraction is indicated below the corresponding segment, with a dot representing fractions $\leq 5\%$. The upper red bar (where present) indicates the fraction of residues that have poor fit to the electron density. The numeric value is given above the bar.

Mol	Chain	Length	Quality of chain
1	A	200	<div> <div>10%</div> <div> <div></div> <div>83%</div> <div>12%</div> <div>5%</div> </div> </div>
1	B	200	<div> <div>9%</div> <div> <div></div> <div>85%</div> <div>14%</div> <div>•</div> </div> </div>
1	C	200	<div> <div>11%</div> <div> <div></div> <div>84%</div> <div>10%</div> <div>7%</div> </div> </div>

2 Entry composition [i](#)

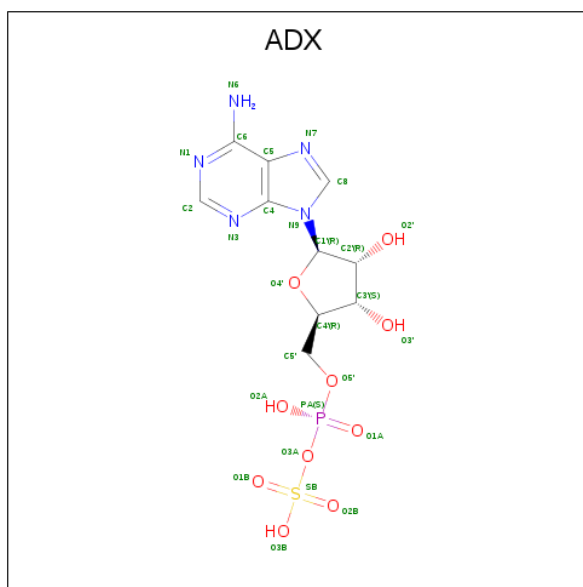
There are 5 unique types of molecules in this entry. The entry contains 5178 atoms, of which 0 are hydrogens and 0 are deuteriums.

In the tables below, the ZeroOcc column contains the number of atoms modelled with zero occupancy, the AltConf column contains the number of residues with at least one atom in alternate conformation and the Trace column contains the number of residues modelled with at most 2 atoms.

- Molecule 1 is a protein called Adenylyl-sulfate kinase 1, chloroplastic.

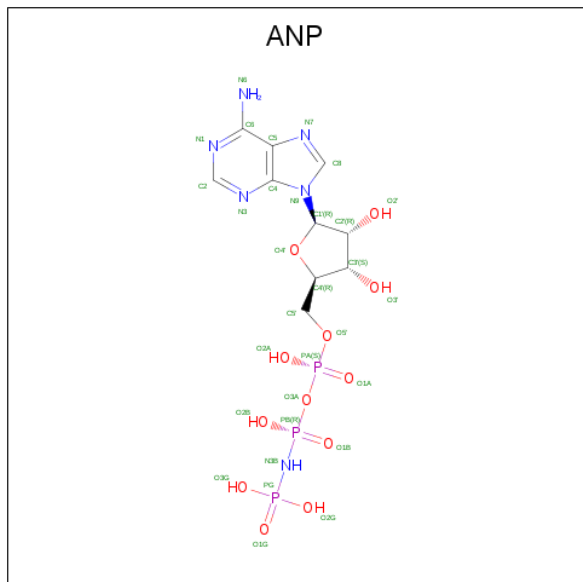
Mol	Chain	Residues	Atoms					ZeroOcc	AltConf	Trace
1	A	191	Total	C	N	O	S	0	7	0
			1495	937	259	285	14			
1	B	197	Total	C	N	O	S	0	6	0
			1550	972	270	294	14			
1	C	187	Total	C	N	O	S	0	8	0
			1477	931	255	279	12			

- Molecule 2 is ADENOSINE-5'-PHOSPHOSULFATE (three-letter code: ADX) (formula: $C_{10}H_{14}N_5O_{10}PS$).



Mol	Chain	Residues	Atoms						ZeroOcc	AltConf
2	A	1	Total	C	N	O	P	S	0	0
			27	10	5	10	1	1		
2	B	1	Total	C	N	O	P	S	0	0
			27	10	5	10	1	1		
2	C	1	Total	C	N	O	P	S	0	0
			27	10	5	10	1	1		

- Molecule 3 is PHOSPHOAMINOPHOSPHONIC ACID-ADENYLATE ESTER (three-letter code: ANP) (formula: $C_{10}H_{17}N_6O_{12}P_3$).



Mol	Chain	Residues	Atoms					ZeroOcc	AltConf
3	A	1	Total	C	N	O	P	0	0
			31	10	6	12	3		
3	B	1	Total	C	N	O	P	0	0
			31	10	6	12	3		
3	C	1	Total	C	N	O	P	0	0
			31	10	6	12	3		

- Molecule 4 is MAGNESIUM ION (three-letter code: MG) (formula: Mg).

Mol	Chain	Residues	Atoms		ZeroOcc	AltConf
4	B	1	Total	Mg	0	0
			1	1		
4	A	1	Total	Mg	0	0
			1	1		
4	C	1	Total	Mg	0	0
			1	1		

- Molecule 5 is water.

Mol	Chain	Residues	Atoms		ZeroOcc	AltConf
5	A	177	Total	O	0	0
			177	177		
5	B	187	Total	O	0	0
			187	187		

Continued on next page...

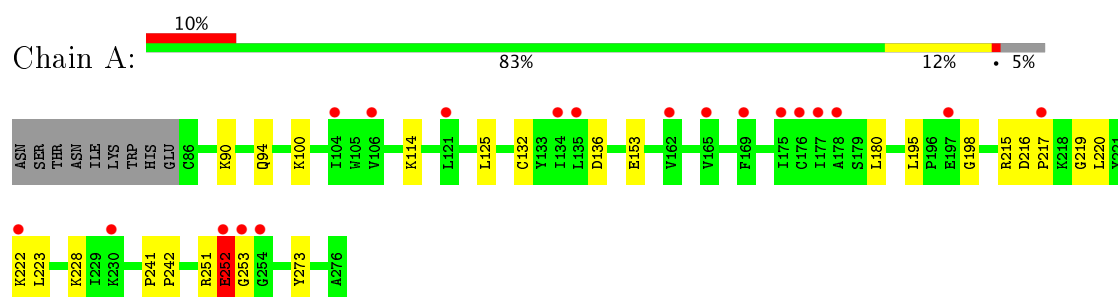
Continued from previous page...

Mol	Chain	Residues	Atoms		ZeroOcc	AltConf
5	C	115	Total	O	0	0
			115	115		

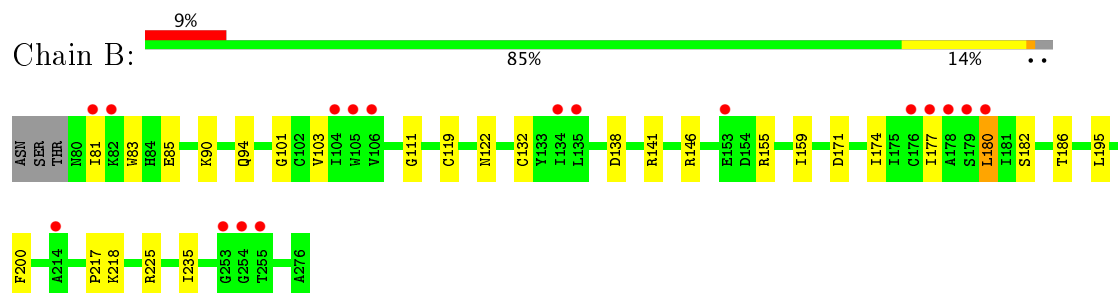
3 Residue-property plots [i](#)

These plots are drawn for all protein, RNA and DNA chains in the entry. The first graphic for a chain summarises the proportions of the various outlier classes displayed in the second graphic. The second graphic shows the sequence view annotated by issues in geometry and electron density. Residues are color-coded according to the number of geometric quality criteria for which they contain at least one outlier: green = 0, yellow = 1, orange = 2 and red = 3 or more. A red dot above a residue indicates a poor fit to the electron density ($RSRZ > 2$). Stretches of 2 or more consecutive residues without any outlier are shown as a green connector. Residues present in the sample, but not in the model, are shown in grey.

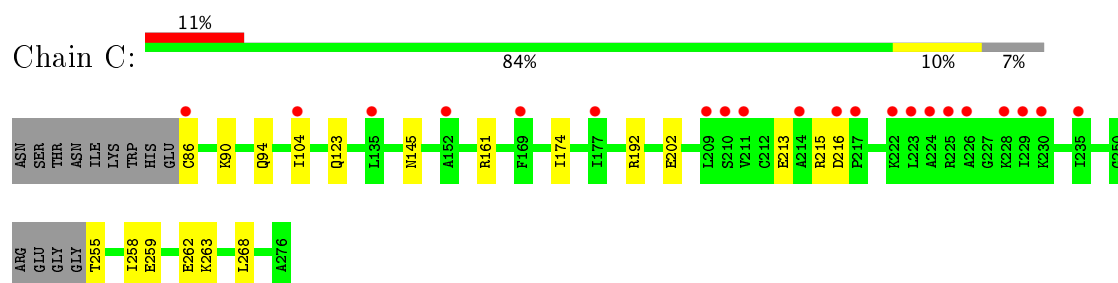
- Molecule 1: Adenylyl-sulfate kinase 1, chloroplastic



- Molecule 1: Adenylyl-sulfate kinase 1, chloroplastic



- Molecule 1: Adenylyl-sulfate kinase 1, chloroplastic



4 Data and refinement statistics

Property	Value	Source
Space group	C 1 2 1	Depositor
Cell constants a, b, c, α , β , γ	121.14Å 95.31Å 73.33Å 90.00° 114.08° 90.00°	Depositor
Resolution (Å)	30.50 – 1.79 30.54 – 1.79	Depositor EDS
% Data completeness (in resolution range)	87.1 (30.50-1.79) 87.0 (30.54-1.79)	Depositor EDS
R_{merge}	(Not available)	Depositor
R_{sym}	(Not available)	Depositor
$\langle I/\sigma(I) \rangle$ ¹	3.40 (at 1.79Å)	Xtriage
Refinement program	PHENIX (phenix.refine: 1.6.2_432)	Depositor
R, R_{free}	0.173 , 0.201 0.167 , 0.197	Depositor DCC
R_{free} test set	3150 reflections (5.10%)	DCC
Wilson B-factor (Å ²)	26.3	Xtriage
Anisotropy	0.736	Xtriage
Bulk solvent k_{sol} (e/Å ³), B_{sol} (Å ²)	0.40 , 52.5	EDS
L-test for twinning ²	$\langle L \rangle = 0.50$, $\langle L^2 \rangle = 0.33$	Xtriage
Estimated twinning fraction	No twinning to report.	Xtriage
F_o, F_c correlation	0.97	EDS
Total number of atoms	5178	wwPDB-VP
Average B, all atoms (Å ²)	40.0	wwPDB-VP

Xtriage's analysis on translational NCS is as follows: *The largest off-origin peak in the Patterson function is 5.95% of the height of the origin peak. No significant pseudotranslation is detected.*

¹Intensities estimated from amplitudes.

²Theoretical values of $\langle |L| \rangle$, $\langle L^2 \rangle$ for acentric reflections are 0.5, 0.333 respectively for untwinned datasets, and 0.375, 0.2 for perfectly twinned datasets.

5 Model quality [i](#)

5.1 Standard geometry [i](#)

Bond lengths and bond angles in the following residue types are not validated in this section: MG, ANP, ADX

The Z score for a bond length (or angle) is the number of standard deviations the observed value is removed from the expected value. A bond length (or angle) with $|Z| > 5$ is considered an outlier worth inspection. RMSZ is the root-mean-square of all Z scores of the bond lengths (or angles).

Mol	Chain	Bond lengths		Bond angles	
		RMSZ	$\# Z > 5$	RMSZ	$\# Z > 5$
1	A	0.37	0/1532	0.70	3/2062 (0.1%)
1	B	0.35	0/1584	0.50	1/2133 (0.0%)
1	C	0.30	0/1519	0.46	0/2044
All	All	0.34	0/4635	0.56	4/6239 (0.1%)

There are no bond length outliers.

All (4) bond angle outliers are listed below:

Mol	Chain	Res	Type	Atoms	Z	Observed(°)	Ideal(°)
1	A	252	GLU	OE1-CD-OE2	-18.38	101.25	123.30
1	A	252	GLU	CG-CD-OE1	10.51	139.32	118.30
1	A	180	LEU	CA-CB-CG	5.57	128.11	115.30
1	B	180	LEU	CA-CB-CG	5.50	127.95	115.30

There are no chirality outliers.

There are no planarity outliers.

5.2 Too-close contacts [i](#)

In the following table, the Non-H and H(model) columns list the number of non-hydrogen atoms and hydrogen atoms in the chain respectively. The H(added) column lists the number of hydrogen atoms added and optimized by MolProbity. The Clashes column lists the number of clashes within the asymmetric unit, whereas Symm-Clashes lists symmetry related clashes.

Mol	Chain	Non-H	H(model)	H(added)	Clashes	Symm-Clashes
1	A	1495	0	1514	22	2
1	B	1550	0	1552	27	0
1	C	1477	0	1509	16	0
2	A	27	0	13	1	0

Continued on next page...

Continued from previous page...

Mol	Chain	Non-H	H(model)	H(added)	Clashes	Symm-Clashes
2	B	27	0	13	1	0
2	C	27	0	13	0	0
3	A	31	0	13	3	0
3	B	31	0	13	1	0
3	C	31	0	13	0	0
4	A	1	0	0	0	0
4	B	1	0	0	0	0
4	C	1	0	0	0	0
5	A	177	0	0	3	0
5	B	187	0	0	7	0
5	C	115	0	0	2	0
All	All	5178	0	4653	64	2

The all-atom clashscore is defined as the number of clashes found per 1000 atoms (including hydrogen atoms). The all-atom clashscore for this structure is 7.

The worst 5 of 64 close contacts within the same asymmetric unit are listed below, sorted by their clash magnitude.

Atom-1	Atom-2	Interatomic distance (Å)	Clash overlap (Å)
1:B:174:ILE:HD11	1:C:174[A]:ILE:HD11	1.49	0.94
1:A:136:ASP:OD1	5:A:552:HOH:O	1.93	0.85
1:C:192[B]:ARG:NH2	1:C:202:GLU:OE1	2.13	0.80
1:B:111:GLY:H	3:B:302:ANP:HNB1	1.35	0.72
1:A:217:PRO:HG3	3:A:402:ANP:H4'	1.71	0.71

All (2) symmetry-related close contacts are listed below. The label for Atom-2 includes the symmetry operator and encoded unit-cell translations to be applied.

Atom-1	Atom-2	Interatomic distance (Å)	Clash overlap (Å)
1:A:252:GLU:CD	1:A:252:GLU:OE1[2_554]	1.26	0.94
1:A:252:GLU:OE1	1:A:252:GLU:OE2[2_554]	1.94	0.26

5.3 Torsion angles [i](#)

5.3.1 Protein backbone [i](#)

In the following table, the Percentiles column shows the percent Ramachandran outliers of the chain as a percentile score with respect to all X-ray entries followed by that with respect to entries of similar resolution.

The Analysed column shows the number of residues for which the backbone conformation was analysed, and the total number of residues.

Mol	Chain	Analysed	Favoured	Allowed	Outliers	Percentiles	
1	A	195/200 (98%)	190 (97%)	4 (2%)	1 (0%)	32	17
1	B	201/200 (100%)	196 (98%)	5 (2%)	0	100	100
1	C	191/200 (96%)	186 (97%)	5 (3%)	0	100	100
All	All	587/600 (98%)	572 (97%)	14 (2%)	1 (0%)	51	35

All (1) Ramachandran outliers are listed below:

Mol	Chain	Res	Type
1	A	252	GLU

5.3.2 Protein sidechains ⓘ

In the following table, the Percentiles column shows the percent sidechain outliers of the chain as a percentile score with respect to all X-ray entries followed by that with respect to entries of similar resolution.

The Analysed column shows the number of residues for which the sidechain conformation was analysed, and the total number of residues.

Mol	Chain	Analysed	Rotameric	Outliers	Percentiles	
1	A	165/167 (99%)	164 (99%)	1 (1%)	89	87
1	B	169/167 (101%)	169 (100%)	0	100	100
1	C	164/167 (98%)	163 (99%)	1 (1%)	89	87
All	All	498/501 (99%)	496 (100%)	2 (0%)	93	91

All (2) residues with a non-rotameric sidechain are listed below:

Mol	Chain	Res	Type
1	A	195	LEU
1	C	86	CYS

Some sidechains can be flipped to improve hydrogen bonding and reduce clashes. All (1) such sidechains are listed below:

Mol	Chain	Res	Type
1	B	94	GLN

5.3.3 RNA ⓘ

There are no RNA molecules in this entry.

5.4 Non-standard residues in protein, DNA, RNA chains ⓘ

There are no non-standard protein/DNA/RNA residues in this entry.

5.5 Carbohydrates ⓘ

There are no carbohydrates in this entry.

5.6 Ligand geometry ⓘ

Of 9 ligands modelled in this entry, 3 are monoatomic - leaving 6 for Mogul analysis.

In the following table, the Counts columns list the number of bonds (or angles) for which Mogul statistics could be retrieved, the number of bonds (or angles) that are observed in the model and the number of bonds (or angles) that are defined in the Chemical Component Dictionary. The Link column lists molecule types, if any, to which the group is linked. The Z score for a bond length (or angle) is the number of standard deviations the observed value is removed from the expected value. A bond length (or angle) with $|Z| > 2$ is considered an outlier worth inspection. RMSZ is the root-mean-square of all Z scores of the bond lengths (or angles).

Mol	Type	Chain	Res	Link	Bond lengths			Bond angles		
					Counts	RMSZ	# $ Z > 2$	Counts	RMSZ	# $ Z > 2$
2	ADX	A	401	-	24,29,29	1.60	5 (20%)	24,45,45	2.09	1 (4%)
3	ANP	A	402	4	29,33,33	3.53	10 (34%)	28,52,52	2.25	7 (25%)
2	ADX	B	301	-	24,29,29	1.58	4 (16%)	24,45,45	2.08	5 (20%)
3	ANP	B	302	4	29,33,33	3.69	11 (37%)	28,52,52	2.69	7 (25%)
2	ADX	C	301	-	24,29,29	1.55	5 (20%)	24,45,45	2.07	2 (8%)
3	ANP	C	302	4	29,33,33	3.78	10 (34%)	28,52,52	2.59	7 (25%)

In the following table, the Chirals column lists the number of chiral outliers, the number of chiral centers analysed, the number of these observed in the model and the number defined in the Chemical Component Dictionary. Similar counts are reported in the Torsion and Rings columns. '-' means no outliers of that kind were identified.

Mol	Type	Chain	Res	Link	Chirals	Torsions	Rings
2	ADX	A	401	-	-	0/6/32/32	0/3/3/3
3	ANP	A	402	4	-	0/13/38/38	0/3/3/3
2	ADX	B	301	-	-	0/6/32/32	0/3/3/3

Continued on next page...

Continued from previous page...

Mol	Type	Chain	Res	Link	Chirals	Torsions	Rings
3	ANP	B	302	4	-	1/13/38/38	0/3/3/3
2	ADX	C	301	-	-	0/6/32/32	0/3/3/3
3	ANP	C	302	4	-	0/13/38/38	0/3/3/3

The worst 5 of 45 bond length outliers are listed below:

Mol	Chain	Res	Type	Atoms	Z	Observed(Å)	Ideal(Å)
2	B	301	ADX	C2'-C3'	-4.83	1.40	1.53
2	A	401	ADX	C2'-C3'	-4.71	1.41	1.53
2	C	301	ADX	C2'-C3'	-4.51	1.41	1.53
2	A	401	ADX	C2'-C1'	-3.39	1.48	1.53
3	C	302	ANP	C2'-C1'	-3.33	1.48	1.53

The worst 5 of 29 bond angle outliers are listed below:

Mol	Chain	Res	Type	Atoms	Z	Observed(°)	Ideal(°)
3	B	302	ANP	O1B-PB-N3B	-8.97	98.38	111.79
2	C	301	ADX	N3-C2-N1	-8.81	121.19	128.86
2	A	401	ADX	N3-C2-N1	-8.73	121.26	128.86
2	B	301	ADX	N3-C2-N1	-8.51	121.45	128.86
3	C	302	ANP	N3-C2-N1	-8.39	121.56	128.86

There are no chirality outliers.

All (1) torsion outliers are listed below:

Mol	Chain	Res	Type	Atoms
3	B	302	ANP	O1B-PB-N3B-PG

There are no ring outliers.

4 monomers are involved in 6 short contacts:

Mol	Chain	Res	Type	Clashes	Symm-Clashes
2	A	401	ADX	1	0
3	A	402	ANP	3	0
2	B	301	ADX	1	0
3	B	302	ANP	1	0

5.7 Other polymers [i](#)

There are no such residues in this entry.

5.8 Polymer linkage issues ⓘ

There are no chain breaks in this entry.

6 Fit of model and data [i](#)

6.1 Protein, DNA and RNA chains [i](#)

In the following table, the column labelled ‘#RSRZ> 2’ contains the number (and percentage) of RSRZ outliers, followed by percent RSRZ outliers for the chain as percentile scores relative to all X-ray entries and entries of similar resolution. The OWAB column contains the minimum, median, 95th percentile and maximum values of the occupancy-weighted average B-factor per residue. The column labelled ‘Q< 0.9’ lists the number of (and percentage) of residues with an average occupancy less than 0.9.

Mol	Chain	Analysed	<RSRZ>	#RSRZ>2	OWAB(Å ²)	Q<0.9
1	A	191/200 (95%)	0.26	19 (9%) 8 6	22, 30, 58, 105	0
1	B	197/200 (98%)	0.18	17 (8%) 11 9	25, 36, 56, 69	0
1	C	187/200 (93%)	0.40	21 (11%) 6 4	27, 41, 79, 107	0
All	All	575/600 (95%)	0.28	57 (9%) 8 6	22, 36, 67, 107	0

The worst 5 of 57 RSRZ outliers are listed below:

Mol	Chain	Res	Type	RSRZ
1	A	254	GLY	7.6
1	A	253	GLY	6.5
1	C	214	ALA	6.2
1	C	226	ALA	5.0
1	C	229	ILE	4.6

6.2 Non-standard residues in protein, DNA, RNA chains [i](#)

There are no non-standard protein/DNA/RNA residues in this entry.

6.3 Carbohydrates [i](#)

There are no carbohydrates in this entry.

6.4 Ligands [i](#)

In the following table, the Atoms column lists the number of modelled atoms in the group and the number defined in the chemical component dictionary. LLDF column lists the quality of electron density of the group with respect to its neighbouring residues in protein, DNA or RNA chains. The B-factors column lists the minimum, median, 95th percentile and maximum values of B factors

of atoms in the group. The column labelled 'Q< 0.9' lists the number of atoms with occupancy less than 0.9.

Mol	Type	Chain	Res	Atoms	RSCC	RSR	LLDF	B-factors(\AA^2)	Q<0.9
2	ADX	B	301	27/27	0.97	0.10	-0.12	29,44,62,81	0
3	ANP	B	302	31/31	0.97	0.10	-0.20	29,39,60,66	0
3	ANP	C	302	31/31	0.96	0.10	-0.21	31,44,60,64	0
2	ADX	A	401	27/27	0.97	0.09	-0.27	24,37,51,75	0
3	ANP	A	402	31/31	0.98	0.09	-0.48	26,34,54,63	0
4	MG	C	303	1/1	0.95	0.08	-0.92	44,44,44,44	0
2	ADX	C	301	27/27	0.97	0.07	-1.02	32,46,54,58	0
4	MG	A	403	1/1	0.98	0.04	-	32,32,32,32	0
4	MG	B	303	1/1	0.97	0.07	-	34,34,34,34	0

6.5 Other polymers [i](#)

There are no such residues in this entry.