



Full wwPDB X-ray Structure Validation Report ⓘ

Sep 16, 2017 – 10:40 PM EDT

PDB ID : 5UI2
Title : CRYSTAL STRUCTURE OF ORANGE CAROTENOID PROTEIN
Authors : KERFELD, C.A.; SAWAYA, M.R.; VISHNU, B.; KROGMANN, D.;
YEATES, T.O.
Deposited on : unknown
Resolution : 2.10 Å(reported)

This is a Full wwPDB X-ray Structure Validation Report for a publicly released PDB entry.

We welcome your comments at validation@mail.wwpdb.org

A user guide is available at

<http://wwpdb.org/validation/2016/XrayValidationReportHelp>

with specific help available everywhere you see the ⓘ symbol.

The following versions of software and data (see [references ⓘ](#)) were used in the production of this report:

MolProbity : 4.02b-467
Mogul : 1.7.2 (RC1), CSD as538be (2017)
Xtriage (Phenix) : 1.9-1692
EDS : rb-20029824
Percentile statistics : 20161228.v01 (using entries in the PDB archive December 28th 2016)
Refmac : 5.8.0135
CCP4 : 6.5.0
Ideal geometry (proteins) : Engh & Huber (2001)
Ideal geometry (DNA, RNA) : Parkinson et al. (1996)
Validation Pipeline (wwPDB-VP) : rb-20029824

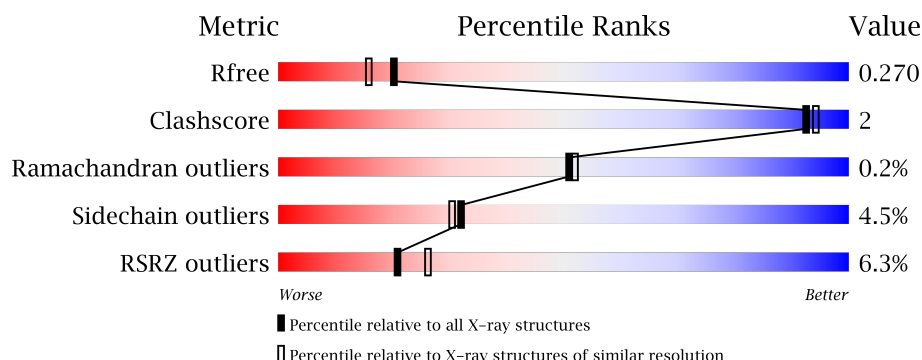
1 Overall quality at a glance

The following experimental techniques were used to determine the structure:

X-RAY DIFFRACTION

The reported resolution of this entry is 2.10 Å.

Percentile scores (ranging between 0-100) for global validation metrics of the entry are shown in the following graphic. The table shows the number of entries on which the scores are based.



Metric	Whole archive (#Entries)	Similar resolution (#Entries, resolution range(Å))
R_{free}	100719	4243 (2.10-2.10)
Clashscore	112137	4788 (2.10-2.10)
Ramachandran outliers	110173	4740 (2.10-2.10)
Sidechain outliers	110143	4741 (2.10-2.10)
RSRZ outliers	101464	4275 (2.10-2.10)

The table below summarises the geometric issues observed across the polymeric chains and their fit to the electron density. The red, orange, yellow and green segments on the lower bar indicate the fraction of residues that contain outliers for ≥ 3 , 2, 1 and 0 types of geometric quality criteria. A grey segment represents the fraction of residues that are not modelled. The numeric value for each fraction is indicated below the corresponding segment, with a dot representing fractions $\leq 5\%$. The upper red bar (where present) indicates the fraction of residues that have poor fit to the electron density. The numeric value is given above the bar.

Mol	Chain	Length	Quality of chain
1	A	317	
1	B	317	

The following table lists non-polymeric compounds, carbohydrate monomers and non-standard residues in protein, DNA, RNA chains that are outliers for geometric or electron-density-fit criteria:

Mol	Type	Chain	Res	Chirality	Geometry	Clashes	Electron density
2	SUC	A	401	-	-	-	X

2 Entry composition [i](#)

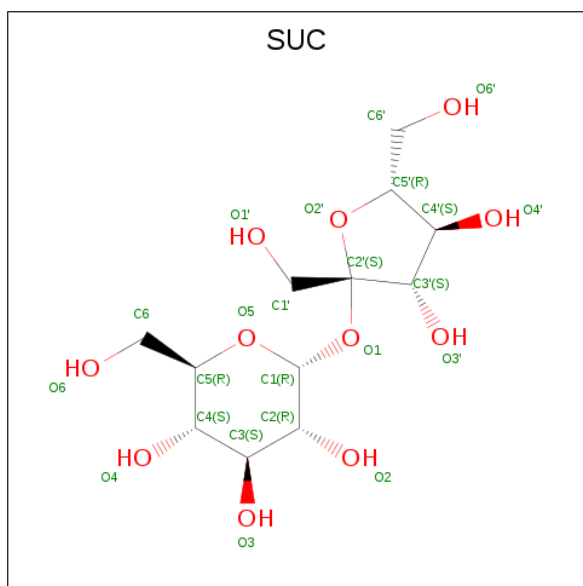
There are 5 unique types of molecules in this entry. The entry contains 5367 atoms, of which 0 are hydrogens and 0 are deuteriums.

In the tables below, the ZeroOcc column contains the number of atoms modelled with zero occupancy, the AltConf column contains the number of residues with at least one atom in alternate conformation and the Trace column contains the number of residues modelled with at most 2 atoms.

- Molecule 1 is a protein called Orange carotenoid-binding protein.

Mol	Chain	Residues	Atoms					ZeroOcc	AltConf	Trace
1	A	316	Total	C	N	O	S	0	0	0
			2477	1583	414	467	13			
1	B	314	Total	C	N	O	S	0	0	0
			2461	1573	411	464	13			

- Molecule 2 is SUCROSE (three-letter code: SUC) (formula: $C_{12}H_{22}O_{11}$).



Mol	Chain	Residues	Atoms			ZeroOcc	AltConf
2	A	1	Total	C	O	0	0
			23	12	11		

- Molecule 3 is CHLORIDE ION (three-letter code: CL) (formula: Cl).

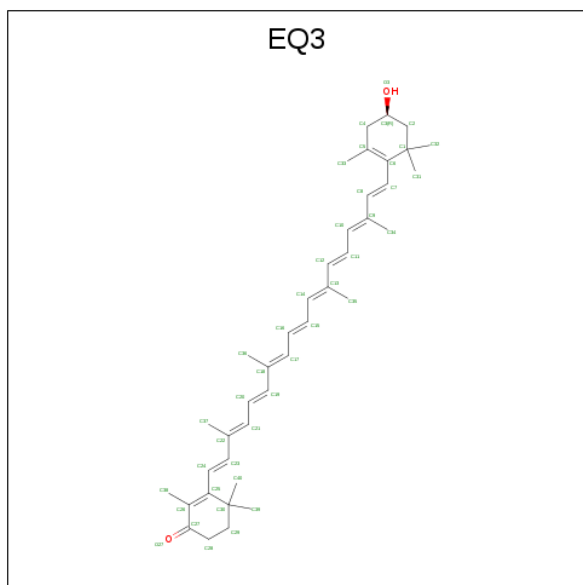
Mol	Chain	Residues	Atoms		ZeroOcc	AltConf
3	B	1	Total	Cl	0	0
			1	1		

Continued on next page...

Continued from previous page...

Mol	Chain	Residues	Atoms	ZeroOcc	AltConf
3	A	1	Total Cl 1 1	0	0

- Molecule 4 is (3'R)-3'-hydroxy-beta,beta-caroten-4-one (three-letter code: EQ3) (formula: $C_{40}H_{54}O_2$).



Mol	Chain	Residues	Atoms	ZeroOcc	AltConf
4	A	1	Total C O 42 40 2	0	0
4	B	1	Total C O 42 40 2	0	0

- Molecule 5 is water.

Mol	Chain	Residues	Atoms	ZeroOcc	AltConf
5	A	167	Total O 167 167	0	0
5	B	153	Total O 153 153	0	0

- Molecule 1: Orange carotenoid-binding protein



4 Data and refinement statistics

Property	Value	Source
Space group	C 1 2 1	Depositor
Cell constants a, b, c, α , β , γ	217.20 Å 40.76 Å 75.46 Å 90.00° 95.80° 90.00°	Depositor
Resolution (Å)	29.25 – 2.10 27.65 – 2.10	Depositor EDS
% Data completeness (in resolution range)	92.5 (29.25-2.10) 92.6 (27.65-2.10)	Depositor EDS
R_{merge}	(Not available)	Depositor
R_{sym}	0.07	Depositor
$\langle I/\sigma(I) \rangle$ ¹	3.52 (at 2.10 Å)	Xtriage
Refinement program	BUSTER 2.10.0	Depositor
R, R_{free}	0.213 , 0.266 0.219 , 0.270	Depositor DCC
R_{free} test set	1800 reflections (5.25%)	DCC
Wilson B-factor (Å ²)	26.2	Xtriage
Anisotropy	0.723	Xtriage
Bulk solvent k_{sol} (e/Å ³), B_{sol} (Å ²)	0.31 , 39.7	EDS
L-test for twinning ²	$\langle L \rangle = 0.49$, $\langle L^2 \rangle = 0.32$	Xtriage
Estimated twinning fraction	No twinning to report.	Xtriage
F_o, F_c correlation	0.94	EDS
Total number of atoms	5367	wwPDB-VP
Average B, all atoms (Å ²)	41.0	wwPDB-VP

Xtriage's analysis on translational NCS is as follows: *The largest off-origin peak in the Patterson function is 6.28% of the height of the origin peak. No significant pseudotranslation is detected.*

¹Intensities estimated from amplitudes.

²Theoretical values of $\langle |L| \rangle$, $\langle L^2 \rangle$ for acentric reflections are 0.5, 0.333 respectively for untwinned datasets, and 0.375, 0.2 for perfectly twinned datasets.

5 Model quality

5.1 Standard geometry

Bond lengths and bond angles in the following residue types are not validated in this section: EQ3, SUC, CL

The Z score for a bond length (or angle) is the number of standard deviations the observed value is removed from the expected value. A bond length (or angle) with $|Z| > 5$ is considered an outlier worth inspection. RMSZ is the root-mean-square of all Z scores of the bond lengths (or angles).

Mol	Chain	Bond lengths		Bond angles	
		RMSZ	$\# Z > 5$	RMSZ	$\# Z > 5$
1	A	0.39	0/2531	0.61	0/3445
1	B	0.40	0/2515	0.61	0/3423
All	All	0.40	0/5046	0.61	0/6868

There are no bond length outliers.

There are no bond angle outliers.

There are no chirality outliers.

There are no planarity outliers.

5.2 Too-close contacts

In the following table, the Non-H and H(model) columns list the number of non-hydrogen atoms and hydrogen atoms in the chain respectively. The H(added) column lists the number of hydrogen atoms added and optimized by MolProbity. The Clashes column lists the number of clashes within the asymmetric unit, whereas Symm-Clashes lists symmetry related clashes.

Mol	Chain	Non-H	H(model)	H(added)	Clashes	Symm-Clashes
1	A	2477	0	2470	8	0
1	B	2461	0	2453	10	0
2	A	23	0	22	0	0
3	A	1	0	0	0	0
3	B	1	0	0	0	0
4	A	42	0	0	0	0
4	B	42	0	0	0	0
5	A	167	0	0	0	0
5	B	153	0	0	0	0
All	All	5367	0	4945	18	0

The all-atom clashscore is defined as the number of clashes found per 1000 atoms (including

hydrogen atoms). The all-atom clashscore for this structure is 2.

All (18) close contacts within the same asymmetric unit are listed below, sorted by their clash magnitude.

Atom-1	Atom-2	Interatomic distance (Å)	Clash overlap (Å)
1:B:207:LEU:HD23	1:B:252:LEU:HD11	1.83	0.59
1:A:207:LEU:HD23	1:A:252:LEU:HD11	1.83	0.59
1:B:256:ARG:HD2	1:B:315:LEU:HD11	1.90	0.53
1:A:101:TRP:HB3	1:A:105:ILE:HB	1.91	0.52
1:B:101:TRP:HB3	1:B:105:ILE:HB	1.92	0.52
1:B:168:LEU:HB2	1:B:171:TYR:HB3	1.92	0.51
1:A:256:ARG:NH2	1:A:314:LEU:HB3	2.27	0.49
1:B:25:ILE:HD11	1:B:153:VAL:HA	1.95	0.49
1:B:251:LYS:HB3	1:B:276:GLN:HB2	1.94	0.49
1:A:251:LYS:HB3	1:A:276:GLN:HB2	1.95	0.47
1:A:25:ILE:HD11	1:A:153:VAL:HA	1.97	0.47
1:B:8:ALA:O	1:B:11:ILE:HG12	2.17	0.45
1:A:8:ALA:O	1:A:11:ILE:HG12	2.17	0.44
1:B:295:ASN:HB2	1:B:296:PRO:HD2	2.00	0.44
1:A:56:PRO:HB3	1:A:60:ASN:HD22	1.84	0.43
1:A:295:ASN:HB2	1:A:296:PRO:HD2	2.00	0.43
1:B:56:PRO:HB3	1:B:60:ASN:HD22	1.84	0.43
1:B:193:GLU:HB3	1:B:256:ARG:HG3	2.01	0.41

There are no symmetry-related clashes.

5.3 Torsion angles

5.3.1 Protein backbone

In the following table, the Percentiles column shows the percent Ramachandran outliers of the chain as a percentile score with respect to all X-ray entries followed by that with respect to entries of similar resolution.

The Analysed column shows the number of residues for which the backbone conformation was analysed, and the total number of residues.

Mol	Chain	Analysed	Favoured	Allowed	Outliers	Percentiles	
1	A	314/317 (99%)	307 (98%)	6 (2%)	1 (0%)	44	44
1	B	312/317 (98%)	305 (98%)	7 (2%)	0	100	100
All	All	626/634 (99%)	612 (98%)	13 (2%)	1 (0%)	51	52

All (1) Ramachandran outliers are listed below:

Mol	Chain	Res	Type
1	A	127	GLU

5.3.2 Protein sidechains ⓘ

In the following table, the Percentiles column shows the percent sidechain outliers of the chain as a percentile score with respect to all X-ray entries followed by that with respect to entries of similar resolution.

The Analysed column shows the number of residues for which the sidechain conformation was analysed, and the total number of residues.

Mol	Chain	Analysed	Rotameric	Outliers	Percentiles	
1	A	270/271 (100%)	261 (97%)	9 (3%)	43	45
1	B	268/271 (99%)	253 (94%)	15 (6%)	25	21
All	All	538/542 (99%)	514 (96%)	24 (4%)	32	30

All (24) residues with a non-rotameric sidechain are listed below:

Mol	Chain	Res	Type
1	A	35	ASP
1	A	50	THR
1	A	84	CYS
1	A	125	ILE
1	A	256	ARG
1	A	262	THR
1	A	268	GLN
1	A	293	LEU
1	A	307	LEU
1	B	35	ASP
1	B	49	LYS
1	B	72	ARG
1	B	127	GLU
1	B	167	LYS
1	B	168	LEU
1	B	171	TYR
1	B	183	GLU
1	B	186	GLN
1	B	193	GLU
1	B	262	THR
1	B	268	GLN
1	B	293	LEU

Continued on next page...

Continued from previous page...

Mol	Chain	Res	Type
1	B	307	LEU
1	B	315	LEU

Some sidechains can be flipped to improve hydrogen bonding and reduce clashes. All (4) such sidechains are listed below:

Mol	Chain	Res	Type
1	A	230	GLN
1	A	268	GLN
1	B	156	ASN
1	B	268	GLN

5.3.3 RNA [i](#)

There are no RNA molecules in this entry.

5.4 Non-standard residues in protein, DNA, RNA chains [i](#)

There are no non-standard protein/DNA/RNA residues in this entry.

5.5 Carbohydrates [i](#)

There are no carbohydrates in this entry.

5.6 Ligand geometry [i](#)

Of 5 ligands modelled in this entry, 2 are monoatomic - leaving 3 for Mogul analysis.

In the following table, the Counts columns list the number of bonds (or angles) for which Mogul statistics could be retrieved, the number of bonds (or angles) that are observed in the model and the number of bonds (or angles) that are defined in the chemical component dictionary. The Link column lists molecule types, if any, to which the group is linked. The Z score for a bond length (or angle) is the number of standard deviations the observed value is removed from the expected value. A bond length (or angle) with $|Z| > 2$ is considered an outlier worth inspection. RMSZ is the root-mean-square of all Z scores of the bond lengths (or angles).

Mol	Type	Chain	Res	Link	Bond lengths			Bond angles		
					Counts	RMSZ	$\# Z > 2$	Counts	RMSZ	$\# Z > 2$
2	SUC	A	401	-	24,24,24	0.16	0	36,36,36	0.47	0
4	EQ3	A	403	-	43,43,43	0.75	0	55,60,60	1.39	7 (12%)
4	EQ3	B	402	-	43,43,43	0.85	0	55,60,60	1.49	5 (9%)

In the following table, the Chirals column lists the number of chiral outliers, the number of chiral centers analysed, the number of these observed in the model and the number defined in the chemical component dictionary. Similar counts are reported in the Torsion and Rings columns. '-' means no outliers of that kind were identified.

Mol	Type	Chain	Res	Link	Chirals	Torsions	Rings
2	SUC	A	401	-	-	0/12/51/51	0/2/2/2
4	EQ3	A	403	-	-	0/29/68/68	0/2/2/2
4	EQ3	B	402	-	-	0/29/68/68	0/2/2/2

There are no bond length outliers.

All (12) bond angle outliers are listed below:

Mol	Chain	Res	Type	Atoms	Z	Observed(°)	Ideal(°)
4	B	402	EQ3	C24-C23-C22	-6.31	116.73	126.21
4	A	403	EQ3	C24-C23-C22	-4.31	119.73	126.21
4	A	403	EQ3	C7-C8-C9	-3.95	120.27	126.21
4	B	402	EQ3	C7-C8-C9	-2.75	122.08	126.21
4	A	403	EQ3	C16-C17-C18	-2.55	123.67	127.31
4	B	402	EQ3	C16-C17-C18	-2.50	123.75	127.31
4	A	403	EQ3	C33-C5-C6	-2.49	121.72	124.51
4	B	402	EQ3	O27-C27-C28	-2.42	116.65	120.82
4	A	403	EQ3	C7-C6-C5	-2.03	116.71	121.54
4	A	403	EQ3	C1-C6-C7	2.26	122.09	115.73
4	A	403	EQ3	C28-C27-C26	2.50	121.03	118.80
4	B	402	EQ3	C28-C27-C26	3.36	121.80	118.80

There are no chirality outliers.

There are no torsion outliers.

There are no ring outliers.

No monomer is involved in short contacts.

5.7 Other polymers [i](#)

There are no such residues in this entry.

5.8 Polymer linkage issues [i](#)

There are no chain breaks in this entry.

6 Fit of model and data ⓘ

6.1 Protein, DNA and RNA chains ⓘ

In the following table, the column labelled ‘#RSRZ> 2’ contains the number (and percentage) of RSRZ outliers, followed by percent RSRZ outliers for the chain as percentile scores relative to all X-ray entries and entries of similar resolution. The OWAB column contains the minimum, median, 95th percentile and maximum values of the occupancy-weighted average B-factor per residue. The column labelled ‘Q< 0.9’ lists the number of (and percentage) of residues with an average occupancy less than 0.9.

Mol	Chain	Analysed	<RSRZ>	#RSRZ>2	OWAB(Å ²)	Q<0.9
1	A	316/317 (99%)	0.23	18 (5%) 24 30	22, 35, 59, 81	0
1	B	314/317 (99%)	0.43	22 (7%) 17 22	21, 40, 74, 112	0
All	All	630/634 (99%)	0.33	40 (6%) 21 26	21, 37, 69, 112	0

All (40) RSRZ outliers are listed below:

Mol	Chain	Res	Type	RSRZ
1	B	170	SER	17.3
1	B	169	GLY	10.2
1	B	171	TYR	6.3
1	B	167	LYS	5.6
1	B	128	GLY	4.6
1	B	179	VAL	4.3
1	B	168	LEU	4.2
1	A	2	PRO	3.8
1	B	165	THR	3.5
1	A	58	ALA	3.5
1	A	77	LEU	3.4
1	A	127	GLU	3.4
1	A	166	SER	3.1
1	B	2	PRO	3.1
1	B	262	THR	2.9
1	B	203	TYR	2.8
1	A	263	GLU	2.8
1	A	128	GLY	2.8
1	B	263	GLU	2.7
1	B	73	GLN	2.7
1	A	57	GLY	2.6
1	B	315	LEU	2.5
1	B	3	PHE	2.5
1	B	303	VAL	2.5

Continued on next page...

Continued from previous page...

Mol	Chain	Res	Type	RSRZ
1	A	73	GLN	2.3
1	A	121	LEU	2.3
1	A	221	GLU	2.3
1	A	167	LYS	2.2
1	A	317	LEU	2.2
1	B	164	ASP	2.2
1	A	59	ALA	2.2
1	B	304	ALA	2.2
1	A	170	SER	2.2
1	A	168	LEU	2.1
1	B	58	ALA	2.1
1	B	261	PRO	2.1
1	B	264	ASP	2.1
1	A	264	ASP	2.1
1	A	3	PHE	2.0
1	B	221	GLU	2.0

6.2 Non-standard residues in protein, DNA, RNA chains [i](#)

There are no non-standard protein/DNA/RNA residues in this entry.

6.3 Carbohydrates [i](#)

There are no carbohydrates in this entry.

6.4 Ligands [i](#)

In the following table, the Atoms column lists the number of modelled atoms in the group and the number defined in the chemical component dictionary. LLDF column lists the quality of electron density of the group with respect to its neighbouring residues in protein, DNA or RNA chains. The B-factors column lists the minimum, median, 95th percentile and maximum values of B factors of atoms in the group. The column labelled 'Q< 0.9' lists the number of atoms with occupancy less than 0.9.

Mol	Type	Chain	Res	Atoms	RSCC	RSR	LLDF	B-factors(Å ²)	Q<0.9
2	SUC	A	401	23/23	0.78	0.27	2.76	13,21,32,32	23
4	EQ3	A	403	42/42	0.93	0.17	0.99	19,25,27,28	0
4	EQ3	B	402	42/42	0.91	0.18	0.93	20,23,25,26	0
3	CL	B	401	1/1	0.96	0.08	-1.22	27,27,27,27	0
3	CL	A	402	1/1	0.99	0.07	-2.64	27,27,27,27	0

6.5 Other polymers

There are no such residues in this entry.