



# Full wwPDB X-ray Structure Validation Report ⓘ

Jul 25, 2017 – 02:25 AM EDT

PDB ID : 5UM6  
Title : Crystal Structure of S. pombe Uba1 in a closed conformation  
Authors : Lv, Z.; Yuan, L.; Aldana-Masangkay, G.; Atkison, J.H.; Chen, Y.; Olsen, S.K.  
Deposited on : unknown  
Resolution : 2.79 Å(reported)

This is a Full wwPDB X-ray Structure Validation Report for a publicly released PDB entry.

We welcome your comments at [validation@mail.wwpdb.org](mailto:validation@mail.wwpdb.org)

A user guide is available at

<http://wwpdb.org/validation/2016/XrayValidationReportHelp>

with specific help available everywhere you see the ⓘ symbol.

---

The following versions of software and data (see [references ⓘ](#)) were used in the production of this report:

MolProbity : 4.02b-467  
Mogul : 1.7.2 (RC1), CSD as538be (2017)  
Xtriage (Phenix) : 1.9-1692  
EDS : rb-20029824  
Percentile statistics : 20161228.v01 (using entries in the PDB archive December 28th 2016)  
Refmac : 5.8.0135  
CCP4 : 6.5.0  
Ideal geometry (proteins) : Engh & Huber (2001)  
Ideal geometry (DNA, RNA) : Parkinson et al. (1996)  
Validation Pipeline (wwPDB-VP) : rb-20029824

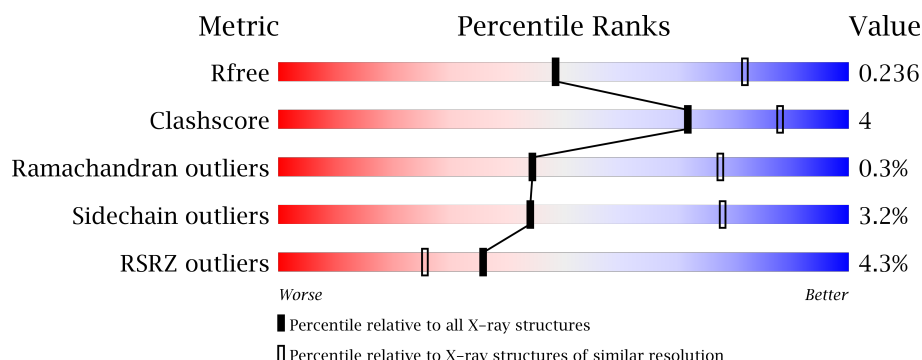
# 1 Overall quality at a glance

The following experimental techniques were used to determine the structure:

## *X-RAY DIFFRACTION*

The reported resolution of this entry is 2.79 Å.

Percentile scores (ranging between 0-100) for global validation metrics of the entry are shown in the following graphic. The table shows the number of entries on which the scores are based.



Metric	Whole archive (#Entries)	Similar resolution (#Entries, resolution range(Å))
$R_{free}$	100719	2583 (2.80-2.80)
Clashscore	112137	3033 (2.80-2.80)
Ramachandran outliers	110173	2983 (2.80-2.80)
Sidechain outliers	110143	2985 (2.80-2.80)
RSRZ outliers	101464	2610 (2.80-2.80)

The table below summarises the geometric issues observed across the polymeric chains and their fit to the electron density. The red, orange, yellow and green segments on the lower bar indicate the fraction of residues that contain outliers for  $\geq 3$ , 2, 1 and 0 types of geometric quality criteria. A grey segment represents the fraction of residues that are not modelled. The numeric value for each fraction is indicated below the corresponding segment, with a dot representing fractions  $\leq 5\%$ . The upper red bar (where present) indicates the fraction of residues that have poor fit to the electron density. The numeric value is given above the bar.

Mol	Chain	Length	Quality of chain
1	A	1000	<div> <div>4%</div> <div>83%</div> <div>12%</div> <div>••</div> </div>

## 2 Entry composition [i](#)

There are 4 unique types of molecules in this entry. The entry contains 7593 atoms, of which 0 are hydrogens and 0 are deuteriums.

In the tables below, the ZeroOcc column contains the number of atoms modelled with zero occupancy, the AltConf column contains the number of residues with at least one atom in alternate conformation and the Trace column contains the number of residues modelled with at most 2 atoms.

- Molecule 1 is a protein called Ubiquitin-activating enzyme E1 1.

Mol	Chain	Residues	Atoms					ZeroOcc	AltConf	Trace
			Total	C	N	O	S			
1	A	962	7551	4833	1234	1448	36	0	0	0

There is a discrepancy between the modelled and reference sequences:

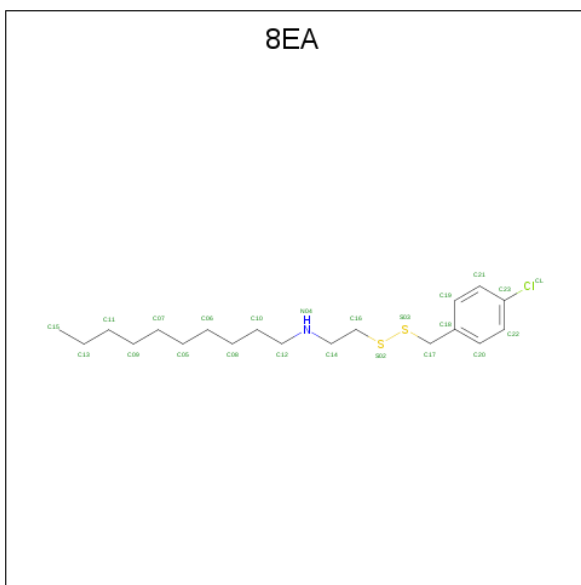
Chain	Residue	Modelled	Actual	Comment	Reference
A	593	ALA	CYS	engineered mutation	UNP O94609

- Molecule 2 is SULFATE ION (three-letter code: SO4) (formula: O<sub>4</sub>S).



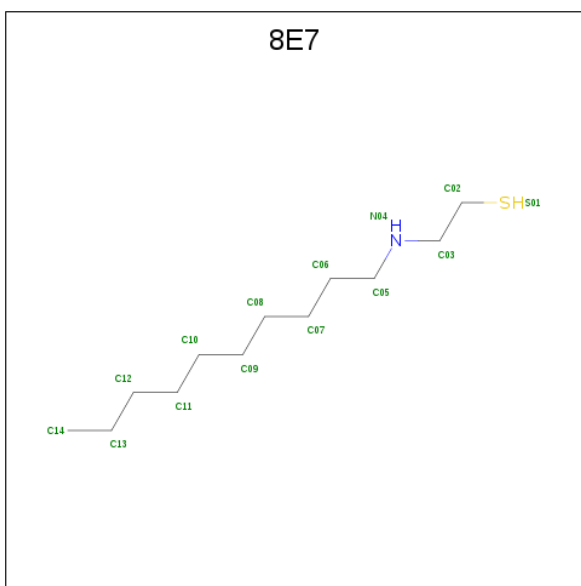
Mol	Chain	Residues	Atoms			ZeroOcc	AltConf
			Total	O	S		
2	A	1	5	4	1	0	0

- Molecule 3 is N-(2-{[(4-chlorophenyl)methyl]disulfanyl}ethyl)decan-1-amine (three-letter code: 8EA) (formula: C<sub>19</sub>H<sub>32</sub>ClNS<sub>2</sub>).



Mol	Chain	Residues	Atoms				ZeroOcc	AltConf
3	A	1	Total	C	Cl	N	S	0
			23	19	1	1	2	

- Molecule 4 is 2-(decylamino)ethane-1-thiol (three-letter code: 8E7) (formula:  $C_{12}H_{27}NS$ ).

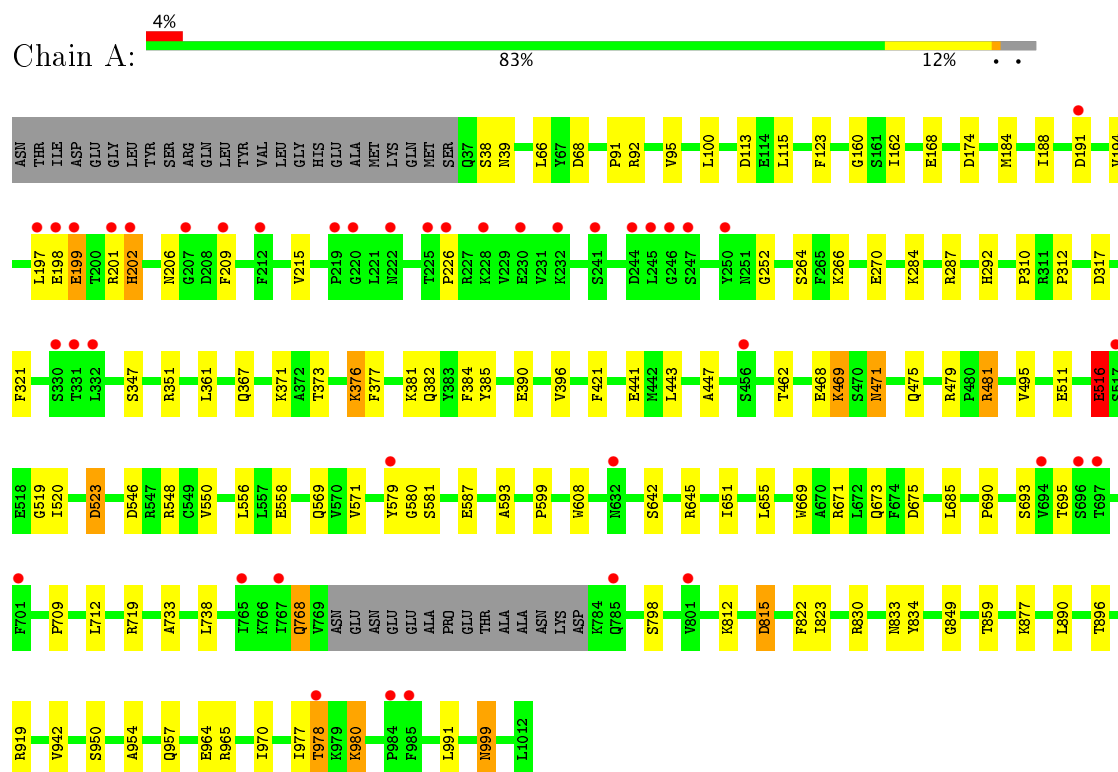


Mol	Chain	Residues	Atoms				ZeroOcc	AltConf
4	A	1	Total	C	N	S	0	0
			14	12	1	1		

### 3 Residue-property plots [i](#)

These plots are drawn for all protein, RNA and DNA chains in the entry. The first graphic for a chain summarises the proportions of the various outlier classes displayed in the second graphic. The second graphic shows the sequence view annotated by issues in geometry and electron density. Residues are color-coded according to the number of geometric quality criteria for which they contain at least one outlier: green = 0, yellow = 1, orange = 2 and red = 3 or more. A red dot above a residue indicates a poor fit to the electron density ( $RSRZ > 2$ ). Stretches of 2 or more consecutive residues without any outlier are shown as a green connector. Residues present in the sample, but not in the model, are shown in grey.

- Molecule 1: Ubiquitin-activating enzyme E1 1



## 4 Data and refinement statistics

Property	Value	Source
Space group	P 21 3	Depositor
Cell constants a, b, c, $\alpha$ , $\beta$ , $\gamma$	145.10Å 145.10Å 145.10Å 90.00° 90.00° 90.00°	Depositor
Resolution (Å)	40.24 – 2.79 48.37 – 2.79	Depositor EDS
% Data completeness (in resolution range)	99.8 (40.24-2.79) 96.8 (48.37-2.79)	Depositor EDS
$R_{merge}$	0.07	Depositor
$R_{sym}$	0.05	Depositor
$\langle I/\sigma(I) \rangle$ <sup>1</sup>	3.53 (at 2.81Å)	Xtriage
Refinement program	PHENIX (1.10.1_2155: ???)	Depositor
R, $R_{free}$	0.206 , 0.239 0.203 , 0.236	Depositor DCC
$R_{free}$ test set	1254 reflections (5.08%)	DCC
Wilson B-factor (Å <sup>2</sup> )	41.0	Xtriage
Anisotropy	0.000	Xtriage
Bulk solvent $k_{sol}$ (e/Å <sup>3</sup> ), $B_{sol}$ (Å <sup>2</sup> )	0.30 , 42.2	EDS
L-test for twinning <sup>2</sup>	$\langle  L  \rangle = 0.49$ , $\langle L^2 \rangle = 0.33$	Xtriage
Estimated twinning fraction	0.032 for l,-k,h	Xtriage
$F_o, F_c$ correlation	0.92	EDS
Total number of atoms	7593	wwPDB-VP
Average B, all atoms (Å <sup>2</sup> )	48.0	wwPDB-VP

Xtriage's analysis on translational NCS is as follows: *The largest off-origin peak in the Patterson function is 1.78% of the height of the origin peak. No significant pseudotranslation is detected.*

<sup>1</sup>Intensities estimated from amplitudes.

<sup>2</sup>Theoretical values of  $\langle |L| \rangle$ ,  $\langle L^2 \rangle$  for acentric reflections are 0.5, 0.333 respectively for untwinned datasets, and 0.375, 0.2 for perfectly twinned datasets.

## 5 Model quality

### 5.1 Standard geometry

Bond lengths and bond angles in the following residue types are not validated in this section: 8E7, 8EA, SO4

The Z score for a bond length (or angle) is the number of standard deviations the observed value is removed from the expected value. A bond length (or angle) with  $|Z| > 5$  is considered an outlier worth inspection. RMSZ is the root-mean-square of all Z scores of the bond lengths (or angles).

Mol	Chain	Bond lengths		Bond angles	
		RMSZ	$\# Z  > 5$	RMSZ	$\# Z  > 5$
1	A	0.26	0/7719	0.42	0/10449

There are no bond length outliers.

There are no bond angle outliers.

There are no chirality outliers.

There are no planarity outliers.

### 5.2 Too-close contacts

In the following table, the Non-H and H(model) columns list the number of non-hydrogen atoms and hydrogen atoms in the chain respectively. The H(added) column lists the number of hydrogen atoms added and optimized by MolProbity. The Clashes column lists the number of clashes within the asymmetric unit, whereas Symm-Clashes lists symmetry related clashes.

Mol	Chain	Non-H	H(model)	H(added)	Clashes	Symm-Clashes
1	A	7551	0	7501	60	0
2	A	5	0	0	0	0
3	A	23	0	0	0	0
4	A	14	0	0	0	0
All	All	7593	0	7501	60	0

The all-atom clashscore is defined as the number of clashes found per 1000 atoms (including hydrogen atoms). The all-atom clashscore for this structure is 4.

All (60) close contacts within the same asymmetric unit are listed below, sorted by their clash magnitude.

Atom-1	Atom-2	Interatomic distance (Å)	Clash overlap (Å)
1:A:66:LEU:HD11	1:A:100:LEU:HD12	1.74	0.70
1:A:312:PRO:HD3	1:A:351:ARG:HD3	1.75	0.69
1:A:443:LEU:HB3	1:A:495:VAL:HG21	1.78	0.66
1:A:978:THR:HB	1:A:980:LYS:HD2	1.78	0.65
1:A:371:LYS:HG2	1:A:377:PHE:HB2	1.81	0.61
1:A:999:ASN:N	1:A:999:ASN:OD1	2.32	0.61
1:A:174:ASP:HB3	1:A:376:LYS:O	2.06	0.56
1:A:447:ALA:HB2	1:A:495:VAL:HG13	1.88	0.56
1:A:815:ASP:N	1:A:815:ASP:OD2	2.39	0.55
1:A:215:VAL:HG22	1:A:252:GLY:HA3	1.90	0.53
1:A:310:PRO:HB3	1:A:317:ASP:HB3	1.90	0.53
1:A:367:GLN:HG2	1:A:890:LEU:HB3	1.92	0.50
1:A:160:GLY:HA3	1:A:361:LEU:HD11	1.93	0.50
1:A:202:HIS:O	1:A:202:HIS:ND1	2.44	0.50
1:A:685:LEU:HD23	1:A:709:PRO:HG3	1.94	0.49
1:A:441:GLU:HG3	1:A:859:THR:HG22	1.95	0.49
1:A:516:GLU:OE2	1:A:548:ARG:NH2	2.45	0.49
1:A:479:ARG:HD2	1:A:481:ARG:HD3	1.94	0.49
1:A:390:GLU:O	1:A:877:LYS:HE3	2.13	0.49
1:A:39:ASN:HB2	1:A:123:PHE:HA	1.96	0.48
1:A:468:GLU:HG2	1:A:469:LYS:H	1.78	0.48
1:A:671:ARG:NH1	1:A:675:ASP:OD2	2.44	0.48
1:A:209:PHE:HD1	1:A:226:PRO:HB2	1.78	0.48
1:A:822:PHE:HD2	1:A:823:ILE:HD12	1.79	0.48
1:A:284:LYS:HB3	1:A:287:ARG:HD2	1.96	0.47
1:A:599:PRO:HD2	1:A:834:TYR:CE2	2.49	0.47
1:A:669:TRP:O	1:A:673:GLN:HG2	2.14	0.47
1:A:593:ALA:HB2	1:A:768:GLN:HG2	1.96	0.47
1:A:197:LEU:HG	1:A:198:GLU:H	1.80	0.46
1:A:469:LYS:HD3	1:A:642:SER:HB2	1.97	0.46
1:A:579:TYR:O	1:A:581:SER:N	2.48	0.46
1:A:68:ASP:OD2	1:A:92:ARG:NE	2.37	0.46
1:A:812:LYS:HE2	1:A:849:GLY:HA2	1.97	0.46
1:A:462:THR:OG1	1:A:511:GLU:O	2.34	0.45
1:A:733:ALA:HB1	1:A:738:LEU:HB2	1.98	0.45
1:A:321:PHE:CD2	1:A:347:SER:HB2	2.52	0.45
1:A:690:PRO:HD2	1:A:693:SER:HB3	1.99	0.45
1:A:91:PRO:O	1:A:95:VAL:HG12	2.17	0.45
1:A:184:MET:H	1:A:199:GLU:HG3	1.82	0.44
1:A:556:LEU:HB3	1:A:571:VAL:HB	1.99	0.44
1:A:188:ILE:HG12	1:A:194:VAL:HG22	2.00	0.44
1:A:970:ILE:HG21	1:A:991:LEU:HD11	2.00	0.44

*Continued on next page...*



Continued from previous page...

Atom-1	Atom-2	Interatomic distance (Å)	Clash overlap (Å)
1:A:162:ILE:HB	1:A:384:PHE:HB3	2.00	0.44
1:A:558:GLU:HB3	1:A:569:GLN:HB3	2.00	0.43
1:A:168:GLU:HA	1:A:264:SER:HA	2.00	0.43
1:A:954:ALA:HB3	1:A:957:GLN:HG3	2.01	0.43
1:A:964:GLU:HG3	1:A:965:ARG:HG3	2.00	0.43
1:A:381:LYS:HA	1:A:382:GLN:HA	1.71	0.42
1:A:519:GLY:HA3	1:A:520:ILE:HA	1.62	0.42
1:A:608:TRP:CD2	1:A:830:ARG:HD2	2.55	0.42
1:A:38:SER:HB2	1:A:373:THR:HB	2.02	0.41
1:A:471:ASN:O	1:A:475:GLN:HG2	2.19	0.41
1:A:651:ILE:O	1:A:655:LEU:HB2	2.20	0.41
1:A:712:LEU:HG	1:A:833:ASN:ND2	2.34	0.41
1:A:396:VAL:HG21	1:A:421:PHE:HB2	2.02	0.41
1:A:978:THR:CB	1:A:980:LYS:HZ2	2.34	0.41
1:A:266:LYS:HB3	1:A:270:GLU:HG3	2.02	0.41
1:A:546:ASP:O	1:A:550:VAL:HG23	2.21	0.41
1:A:292:HIS:HA	1:A:385:TYR:CZ	2.57	0.40
1:A:523:ASP:OD1	1:A:523:ASP:N	2.55	0.40

There are no symmetry-related clashes.

## 5.3 Torsion angles

### 5.3.1 Protein backbone

In the following table, the Percentiles column shows the percent Ramachandran outliers of the chain as a percentile score with respect to all X-ray entries followed by that with respect to entries of similar resolution.

The Analysed column shows the number of residues for which the backbone conformation was analysed, and the total number of residues.

Mol	Chain	Analysed	Favoured	Allowed	Outliers	Percentiles
1	A	958/1000 (96%)	914 (95%)	41 (4%)	3 (0%)	44 77

All (3) Ramachandran outliers are listed below:

Mol	Chain	Res	Type
1	A	516	GLU
1	A	580	GLY
1	A	977	ILE

### 5.3.2 Protein sidechains ⓘ

In the following table, the Percentiles column shows the percent sidechain outliers of the chain as a percentile score with respect to all X-ray entries followed by that with respect to entries of similar resolution.

The Analysed column shows the number of residues for which the sidechain conformation was analysed, and the total number of residues.

Mol	Chain	Analysed	Rotameric	Outliers	Percentiles
1	A	843/875 (96%)	816 (97%)	27 (3%)	44 78

All (27) residues with a non-rotameric sidechain are listed below:

Mol	Chain	Res	Type
1	A	113	ASP
1	A	115	LEU
1	A	191	ASP
1	A	199	GLU
1	A	201	ARG
1	A	202	HIS
1	A	206	ASN
1	A	376	LYS
1	A	469	LYS
1	A	471	ASN
1	A	481	ARG
1	A	516	GLU
1	A	523	ASP
1	A	587	GLU
1	A	645	ARG
1	A	695	THR
1	A	719	ARG
1	A	768	GLN
1	A	798	SER
1	A	815	ASP
1	A	896	THR
1	A	919	ARG
1	A	942	VAL
1	A	950	SER
1	A	978	THR
1	A	980	LYS
1	A	999	ASN

Some sidechains can be flipped to improve hydrogen bonding and reduce clashes. There are no such sidechains identified.

### 5.3.3 RNA ⓘ

There are no RNA molecules in this entry.

## 5.4 Non-standard residues in protein, DNA, RNA chains ⓘ

There are no non-standard protein/DNA/RNA residues in this entry.

## 5.5 Carbohydrates ⓘ

There are no carbohydrates in this entry.

## 5.6 Ligand geometry ⓘ

3 ligands are modelled in this entry.

In the following table, the Counts columns list the number of bonds (or angles) for which Mogul statistics could be retrieved, the number of bonds (or angles) that are observed in the model and the number of bonds (or angles) that are defined in the chemical component dictionary. The Link column lists molecule types, if any, to which the group is linked. The Z score for a bond length (or angle) is the number of standard deviations the observed value is removed from the expected value. A bond length (or angle) with  $|Z| > 2$  is considered an outlier worth inspection. RMSZ is the root-mean-square of all Z scores of the bond lengths (or angles).

Mol	Type	Chain	Res	Link	Bond lengths			Bond angles		
					Counts	RMSZ	$\# Z  > 2$	Counts	RMSZ	$\# Z  > 2$
2	SO4	A	1101	-	4,4,4	0.15	0	6,6,6	0.07	0
3	8EA	A	1102	-	23,23,23	0.80	0	24,25,25	0.65	1 (4%)
4	8E7	A	1103	1	13,13,13	0.33	0	10,12,12	0.70	0

In the following table, the Chirals column lists the number of chiral outliers, the number of chiral centers analysed, the number of these observed in the model and the number defined in the chemical component dictionary. Similar counts are reported in the Torsion and Rings columns. '-' means no outliers of that kind were identified.

Mol	Type	Chain	Res	Link	Chirals	Torsions	Rings
2	SO4	A	1101	-	-	0/0/0/0	0/0/0/0
3	8EA	A	1102	-	-	0/16/16/16	0/1/1/1
4	8E7	A	1103	1	-	0/11/11/11	0/0/0/0

There are no bond length outliers.

All (1) bond angle outliers are listed below:

Mol	Chain	Res	Type	Atoms	Z	Observed( $^{\circ}$ )	Ideal( $^{\circ}$ )
3	A	1102	8EA	C17-S03-S02	2.40	108.52	103.82

There are no chirality outliers.

There are no torsion outliers.

There are no ring outliers.

No monomer is involved in short contacts.

## 5.7 Other polymers

There are no such residues in this entry.

## 5.8 Polymer linkage issues

There are no chain breaks in this entry.

## 6 Fit of model and data ⓘ

### 6.1 Protein, DNA and RNA chains ⓘ

In the following table, the column labelled ‘#RSRZ> 2’ contains the number (and percentage) of RSRZ outliers, followed by percent RSRZ outliers for the chain as percentile scores relative to all X-ray entries and entries of similar resolution. The OWAB column contains the minimum, median, 95<sup>th</sup> percentile and maximum values of the occupancy-weighted average B-factor per residue. The column labelled ‘Q< 0.9’ lists the number of (and percentage) of residues with an average occupancy less than 0.9.

Mol	Chain	Analysed	<RSRZ>	#RSRZ>2	OWAB(Å <sup>2</sup> )	Q<0.9
1	A	962/1000 (96%)	0.17	41 (4%) 36 26	10, 43, 87, 151	0

All (41) RSRZ outliers are listed below:

Mol	Chain	Res	Type	RSRZ
1	A	517	SER	5.3
1	A	199	GLU	4.8
1	A	198	GLU	4.7
1	A	250	TYR	3.9
1	A	985	PHE	3.9
1	A	225	THR	3.9
1	A	331	THR	3.7
1	A	202	HIS	3.5
1	A	696	SER	3.5
1	A	246	GLY	3.5
1	A	978	THR	3.4
1	A	222	ASN	3.4
1	A	244	ASP	3.3
1	A	209	PHE	3.3
1	A	767	ILE	3.2
1	A	332	LEU	3.2
1	A	226	PRO	3.1
1	A	694	VAL	3.1
1	A	201	ARG	3.1
1	A	191	ASP	3.0
1	A	197	LEU	3.0
1	A	232	LYS	3.0
1	A	220	GLY	2.9
1	A	207	GLY	2.8
1	A	228	LYS	2.8
1	A	241	SER	2.7
1	A	697	THR	2.6

*Continued on next page...*

*Continued from previous page...*

Mol	Chain	Res	Type	RSRZ
1	A	212	PHE	2.5
1	A	230	GLU	2.4
1	A	219	PRO	2.4
1	A	579	TYR	2.3
1	A	245	LEU	2.2
1	A	632	ASN	2.1
1	A	330	SER	2.1
1	A	456	SER	2.1
1	A	247	SER	2.1
1	A	801	VAL	2.1
1	A	984	PRO	2.1
1	A	785	GLN	2.1
1	A	701	PHE	2.1
1	A	765	ILE	2.0

## 6.2 Non-standard residues in protein, DNA, RNA chains [i](#)

There are no non-standard protein/DNA/RNA residues in this entry.

## 6.3 Carbohydrates [i](#)

There are no carbohydrates in this entry.

## 6.4 Ligands [i](#)

In the following table, the Atoms column lists the number of modelled atoms in the group and the number defined in the chemical component dictionary. LLDF column lists the quality of electron density of the group with respect to its neighbouring residues in protein, DNA or RNA chains. The B-factors column lists the minimum, median, 95<sup>th</sup> percentile and maximum values of B factors of atoms in the group. The column labelled 'Q< 0.9' lists the number of atoms with occupancy less than 0.9.

Mol	Type	Chain	Res	Atoms	RSCC	RSR	LLDF	B-factors( $\text{\AA}^2$ )	Q<0.9
4	8E7	A	1103	14/14	0.94	0.25	1.83	51,55,71,76	0
3	8EA	A	1102	23/23	0.83	0.27	1.50	46,61,74,79	0
2	SO4	A	1101	5/5	0.96	0.11	-0.87	55,61,63,67	0

## 6.5 Other polymers [i](#)

There are no such residues in this entry.