



# Full wwPDB X-ray Structure Validation Report ⓘ

Sep 18, 2017 – 02:22 AM EDT

PDB ID : 5UO2  
Title : Structure of human neuronal nitric oxide synthase heme domain in complex with 7-[(3-Ethyl-5-((methylamino)methyl)phenoxy)methyl]quinolin-2-amine  
Authors : Li, H.; Poulos, T.L.  
Deposited on : unknown  
Resolution : 1.95 Å(reported)

This is a Full wwPDB X-ray Structure Validation Report for a publicly released PDB entry.

We welcome your comments at [validation@mail.wwpdb.org](mailto:validation@mail.wwpdb.org)

A user guide is available at

<http://wwpdb.org/validation/2016/XrayValidationReportHelp>

with specific help available everywhere you see the ⓘ symbol.

---

The following versions of software and data (see [references ⓘ](#)) were used in the production of this report:

MolProbity : 4.02b-467  
Mogul : 1.7.2 (RC1), CSD as538be (2017)  
Xtriage (Phenix) : 1.9-1692  
EDS : rb-20029824  
Percentile statistics : 20161228.v01 (using entries in the PDB archive December 28th 2016)  
Refmac : 5.8.0135  
CCP4 : 6.5.0  
Ideal geometry (proteins) : Engh & Huber (2001)  
Ideal geometry (DNA, RNA) : Parkinson et al. (1996)  
Validation Pipeline (wwPDB-VP) : rb-20029824

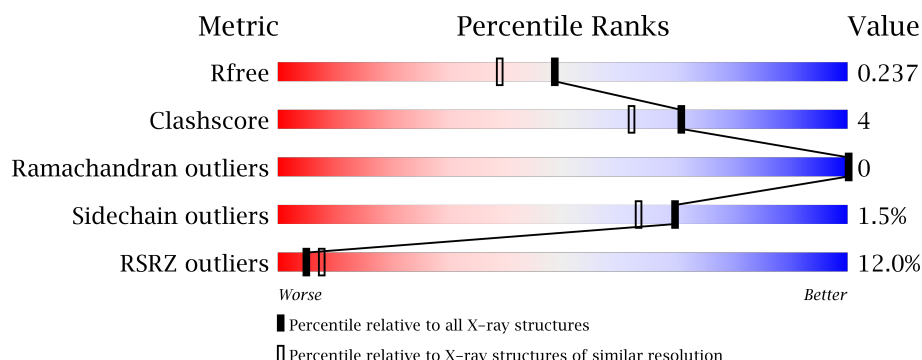
# 1 Overall quality at a glance ⓘ

The following experimental techniques were used to determine the structure:

## *X-RAY DIFFRACTION*

The reported resolution of this entry is 1.95 Å.

Percentile scores (ranging between 0-100) for global validation metrics of the entry are shown in the following graphic. The table shows the number of entries on which the scores are based.



Metric	Whole archive (#Entries)	Similar resolution (#Entries, resolution range(Å))
$R_{free}$	100719	3233 (1.96-1.92)
Clashscore	112137	3430 (1.96-1.92)
Ramachandran outliers	110173	3395 (1.96-1.92)
Sidechain outliers	110143	3395 (1.96-1.92)
RSRZ outliers	101464	3250 (1.96-1.92)

The table below summarises the geometric issues observed across the polymeric chains and their fit to the electron density. The red, orange, yellow and green segments on the lower bar indicate the fraction of residues that contain outliers for  $\geq 3$ , 2, 1 and 0 types of geometric quality criteria. A grey segment represents the fraction of residues that are not modelled. The numeric value for each fraction is indicated below the corresponding segment, with a dot representing fractions  $\leq 5\%$ . The upper red bar (where present) indicates the fraction of residues that have poor fit to the electron density. The numeric value is given above the bar.

Mol	Chain	Length	Quality of chain
1	A	421	<div> <div>9%</div> <div>87%</div> <div>11%</div> <div>..</div> </div>
1	B	421	<div> <div>14%</div> <div>88%</div> <div>9%</div> <div>.</div> </div>

The following table lists non-polymeric compounds, carbohydrate monomers and non-standard residues in protein, DNA, RNA chains that are outliers for geometric or electron-density-fit criteria:

Mol	Type	Chain	Res	Chirality	Geometry	Clashes	Electron density
4	8J4	A	803	-	-	-	X
4	8J4	B	803	-	-	-	X
5	GOL	A	804	-	-	-	X
5	GOL	B	804	-	-	-	X
5	GOL	B	805	-	-	-	X

## 2 Entry composition [i](#)

There are 7 unique types of molecules in this entry. The entry contains 7565 atoms, of which 0 are hydrogens and 0 are deuteriums.

In the tables below, the ZeroOcc column contains the number of atoms modelled with zero occupancy, the AltConf column contains the number of residues with at least one atom in alternate conformation and the Trace column contains the number of residues modelled with at most 2 atoms.

- Molecule 1 is a protein called Nitric oxide synthase, brain.

Mol	Chain	Residues	Atoms					ZeroOcc	AltConf	Trace
1	A	416	Total	C	N	O	S	0	4	0
			3403	2179	579	622	23			
1	B	409	Total	C	N	O	S	0	5	0
			3358	2152	571	614	21			

There are 4 discrepancies between the modelled and reference sequences:

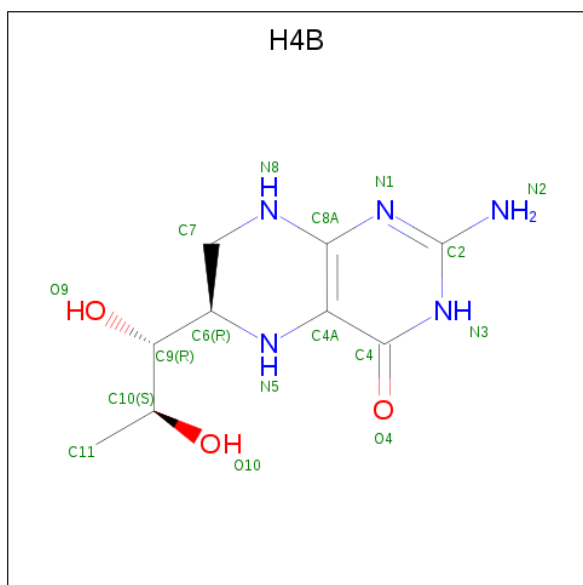
Chain	Residue	Modelled	Actual	Comment	Reference
A	354	ALA	ARG	engineered mutation	UNP P29475
A	357	ASP	GLY	engineered mutation	UNP P29475
B	354	ALA	ARG	engineered mutation	UNP P29475
B	357	ASP	GLY	engineered mutation	UNP P29475

- Molecule 2 is PROTOPORPHYRIN IX CONTAINING FE (three-letter code: HEM) (formula:  $C_{34}H_{32}FeN_4O_4$ ).



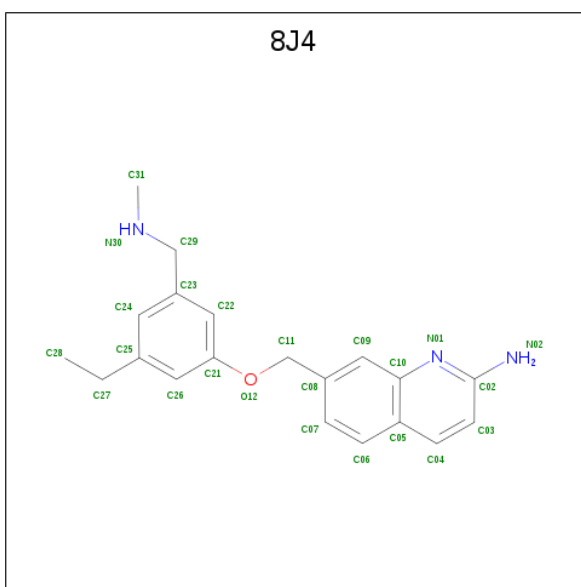
Mol	Chain	Residues	Atoms					ZeroOcc	AltConf
2	A	1	Total 43	C 34	Fe 1	N 4	O 4	0	0
2	B	1	Total 43	C 34	Fe 1	N 4	O 4	0	0

- Molecule 3 is 5,6,7,8-TETRAHYDROBIOPTERIN (three-letter code: H4B) (formula:  $C_9H_{15}N_5O_3$ ).



Mol	Chain	Residues	Atoms				ZeroOcc	AltConf
3	A	1	Total	C	N	O	0	0
			17	9	5	3		
3	B	1	Total	C	N	O	0	0
			17	9	5	3		

- Molecule 4 is 7-({3-ethyl-5-[(methylamino)methyl]phenoxy}methyl)quinolin-2-amine (three-letter code: 8J4) (formula:  $C_{20}H_{23}N_3O$ ).



Mol	Chain	Residues	Atoms				ZeroOcc	AltConf
4	A	1	Total	C	N	O	0	0
			24	20	3	1		
4	B	1	Total	C	N	O	0	0
			24	20	3	1		

- Molecule 5 is GLYCEROL (three-letter code: GOL) (formula:  $C_3H_8O_3$ ).



Mol	Chain	Residues	Atoms			ZeroOcc	AltConf
5	A	1	Total	C	O	0	0
			6	3	3		
5	B	1	Total	C	O	0	0
			6	3	3		

*Continued on next page...*

*Continued from previous page...*

Mol	Chain	Residues	Atoms			ZeroOcc	AltConf
5	B	1	Total	C	O	0	0
			6	3	3		

- Molecule 6 is ZINC ION (three-letter code: ZN) (formula: Zn).

Mol	Chain	Residues	Atoms		ZeroOcc	AltConf
6	A	1	Total	Zn	0	0
			1	1		

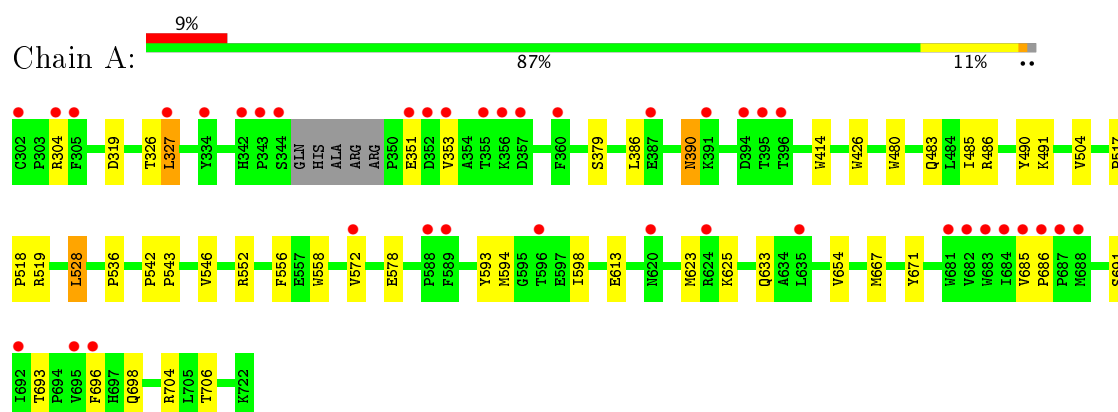
- Molecule 7 is water.

Mol	Chain	Residues	Atoms		ZeroOcc	AltConf
7	A	346	Total	O	0	0
			346	346		
7	B	271	Total	O	0	0
			271	271		

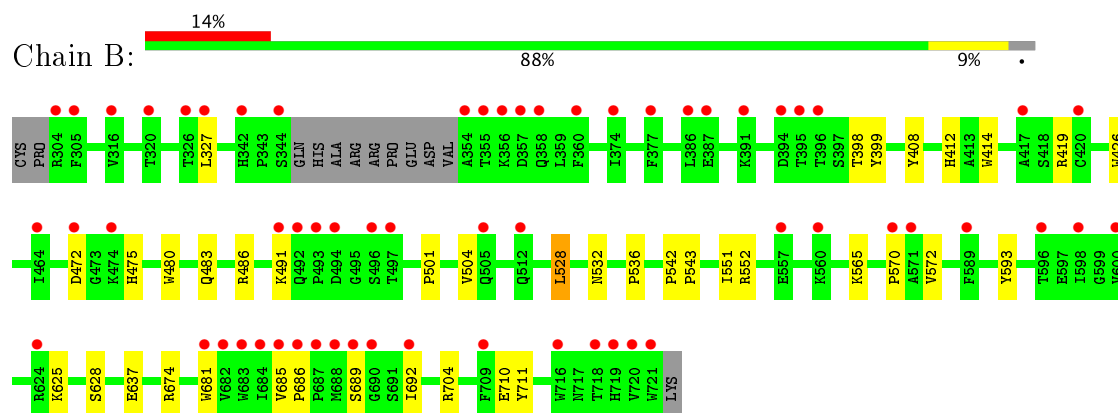
### 3 Residue-property plots [i](#)

These plots are drawn for all protein, RNA and DNA chains in the entry. The first graphic for a chain summarises the proportions of the various outlier classes displayed in the second graphic. The second graphic shows the sequence view annotated by issues in geometry and electron density. Residues are color-coded according to the number of geometric quality criteria for which they contain at least one outlier: green = 0, yellow = 1, orange = 2 and red = 3 or more. A red dot above a residue indicates a poor fit to the electron density ( $RSRZ > 2$ ). Stretches of 2 or more consecutive residues without any outlier are shown as a green connector. Residues present in the sample, but not in the model, are shown in grey.

- Molecule 1: Nitric oxide synthase, brain



- Molecule 1: Nitric oxide synthase, brain





## 4 Data and refinement statistics

Property	Value	Source
Space group	P 21 21 21	Depositor
Cell constants a, b, c, $\alpha$ , $\beta$ , $\gamma$	52.34Å 122.80Å 165.27Å 90.00° 90.00° 90.00°	Depositor
Resolution (Å)	39.83 – 1.95 39.83 – 1.95	Depositor EDS
% Data completeness (in resolution range)	88.4 (39.83-1.95) 89.4 (39.83-1.95)	Depositor EDS
$R_{merge}$	0.12	Depositor
$R_{sym}$	0.12	Depositor
$\langle I/\sigma(I) \rangle$ <sup>1</sup>	1.30 (at 1.95Å)	Xtriage
Refinement program	PHENIX 1.9_1692	Depositor
R, $R_{free}$	0.182 , 0.235 0.184 , 0.237	Depositor DCC
$R_{free}$ test set	3463 reflections (4.93%)	DCC
Wilson B-factor (Å <sup>2</sup> )	30.5	Xtriage
Anisotropy	0.084	Xtriage
Bulk solvent $k_{sol}$ (e/Å <sup>3</sup> ), $B_{sol}$ (Å <sup>2</sup> )	0.34 , 47.9	EDS
L-test for twinning <sup>2</sup>	$\langle  L  \rangle = 0.48$ , $\langle L^2 \rangle = 0.31$	Xtriage
Estimated twinning fraction	No twinning to report.	Xtriage
$F_o, F_c$ correlation	0.94	EDS
Total number of atoms	7565	wwPDB-VP
Average B, all atoms (Å <sup>2</sup> )	47.0	wwPDB-VP

Xtriage's analysis on translational NCS is as follows: *The largest off-origin peak in the Patterson function is 3.85% of the height of the origin peak. No significant pseudotranslation is detected.*

<sup>1</sup>Intensities estimated from amplitudes.

<sup>2</sup>Theoretical values of  $\langle |L| \rangle$ ,  $\langle L^2 \rangle$  for acentric reflections are 0.5, 0.333 respectively for untwinned datasets, and 0.375, 0.2 for perfectly twinned datasets.

## 5 Model quality

### 5.1 Standard geometry

Bond lengths and bond angles in the following residue types are not validated in this section: GOL, ZN, H4B, HEM, 8J4

The Z score for a bond length (or angle) is the number of standard deviations the observed value is removed from the expected value. A bond length (or angle) with  $|Z| > 5$  is considered an outlier worth inspection. RMSZ is the root-mean-square of all Z scores of the bond lengths (or angles).

Mol	Chain	Bond lengths		Bond angles	
		RMSZ	# Z  >5	RMSZ	# Z  >5
1	A	0.38	0/3513	0.53	0/4767
1	B	0.36	0/3469	0.49	0/4708
All	All	0.37	0/6982	0.51	0/9475

There are no bond length outliers.

There are no bond angle outliers.

There are no chirality outliers.

There are no planarity outliers.

### 5.2 Too-close contacts

In the following table, the Non-H and H(model) columns list the number of non-hydrogen atoms and hydrogen atoms in the chain respectively. The H(added) column lists the number of hydrogen atoms added and optimized by MolProbity. The Clashes column lists the number of clashes within the asymmetric unit, whereas Symm-Clashes lists symmetry related clashes.

Mol	Chain	Non-H	H(model)	H(added)	Clashes	Symm-Clashes
1	A	3403	0	3313	28	0
1	B	3358	0	3268	24	0
2	A	43	0	30	3	0
2	B	43	0	30	2	0
3	A	17	0	15	0	0
3	B	17	0	15	0	0
4	A	24	0	0	2	0
4	B	24	0	0	1	0
5	A	6	0	8	0	0
5	B	12	0	16	1	0
6	A	1	0	0	0	0

*Continued on next page...*

*Continued from previous page...*

Mol	Chain	Non-H	H(model)	H(added)	Clashes	Symm-Clashes
7	A	346	0	0	5	0
7	B	271	0	0	0	0
All	All	7565	0	6695	56	0

The all-atom clashscore is defined as the number of clashes found per 1000 atoms (including hydrogen atoms). The all-atom clashscore for this structure is 4.

All (56) close contacts within the same asymmetric unit are listed below, sorted by their clash magnitude.

Atom-1	Atom-2	Interatomic distance (Å)	Clash overlap (Å)
1:A:528:LEU:HD22	1:A:536:PRO:HB2	1.61	0.82
1:B:528:LEU:HD22	1:B:536:PRO:HB2	1.64	0.78
2:B:801:HEM:HBB2	2:B:801:HEM:HHC	1.69	0.74
1:A:390:ASN:ND2	7:A:903:HOH:O	2.23	0.71
1:B:419:ARG:NH1	1:B:711:TYR:OH	2.24	0.70
2:A:801:HEM:HMC2	2:A:801:HEM:HBC2	1.74	0.69
1:B:483:GLN:HB2	1:B:486:ARG:HG3	1.78	0.64
2:A:801:HEM:HHC	2:A:801:HEM:HBB2	1.81	0.63
1:B:572:VAL:HG21	4:B:803:8J4:C07	2.29	0.62
1:A:480:TRP:HB2	1:A:528:LEU:HB3	1.82	0.61
1:A:326:THR:HG21	1:A:706:THR:HG22	1.83	0.60
1:A:483:GLN:HB2	1:A:486:ARG:HG3	1.83	0.60
1:A:327:LEU:HB2	1:A:704:ARG:HD3	1.86	0.58
1:A:633:GLN:NE2	1:B:637:GLU:OE2	2.37	0.57
1:A:578:GLU:OE1	7:A:901:HOH:O	2.18	0.56
1:B:480:TRP:HB2	1:B:528:LEU:HB3	1.91	0.53
1:B:491:LYS:HG2	1:B:504:VAL:HG11	1.94	0.50
2:A:801:HEM:HBA2	4:A:803:8J4:C09	2.44	0.48
1:A:519:ARG:NH1	7:A:906:HOH:O	2.41	0.48
1:A:327:LEU:HB2	1:A:704:ARG:HH11	1.78	0.48
1:A:613:GLU:HG3	1:A:623:MET:HE3	1.96	0.47
1:A:414:TRP:CE3	1:A:426:TRP:HA	2.50	0.47
1:B:501:PRO:HA	1:B:504:VAL:HG23	1.97	0.47
2:B:801:HEM:HBB2	2:B:801:HEM:CHC	2.43	0.46
1:B:674:ARG:HH21	5:B:804:GOL:H32	1.81	0.46
1:A:491:LYS:HG2	1:A:504:VAL:HG11	1.98	0.45
1:B:681:TRP:CE2	1:B:685:VAL:HG21	2.51	0.45
1:B:704:ARG:NH1	1:B:710[A]:GLU:OE2	2.49	0.45
1:B:491:LYS:HA	1:B:491:LYS:HD2	1.80	0.45
1:B:625:LYS:HE3	1:B:628:SER:HB3	1.99	0.45
1:A:572:VAL:HG21	4:A:803:8J4:C07	2.47	0.44

*Continued on next page...*

*Continued from previous page...*

Atom-1	Atom-2	Interatomic distance (Å)	Clash overlap (Å)
1:B:689:SER:HB3	1:B:692:ILE:HD11	1.99	0.44
1:A:667:MET:HE1	1:A:698:GLN:HG2	1.99	0.43
1:B:398:THR:OG1	1:B:399:TYR:N	2.51	0.43
1:B:327:LEU:HD12	1:B:704:ARG:HG2	2.01	0.43
1:A:485:ILE:HD13	1:A:546:VAL:HG13	1.99	0.43
1:B:472:ASP:CG	1:B:475:HIS:HD1	2.22	0.43
1:B:542:PRO:HA	1:B:543:PRO:HD3	1.81	0.43
1:A:691:SER:HA	1:A:696:PHE:CG	2.54	0.43
1:A:490:TYR:CE1	1:A:519:ARG:HA	2.54	0.42
1:B:475:HIS:HB3	1:B:532:ASN:OD1	2.19	0.42
1:A:319:ASP:HB2	1:A:671:TYR:CE2	2.55	0.42
1:A:517:PRO:HA	1:A:518:PRO:HD3	1.95	0.42
1:B:408:TYR:CE1	1:B:412:HIS:CE1	3.08	0.42
1:B:685:VAL:HA	1:B:686:PRO:HD3	1.90	0.42
1:A:556:PHE:HB3	1:A:558:TRP:CE2	2.55	0.42
1:A:633:GLN:OE1	7:A:902:HOH:O	2.21	0.42
1:A:686:PRO:HG2	1:A:693:THR:HG21	2.02	0.41
1:B:551:ILE:HG12	1:B:565:LYS:HA	2.02	0.41
1:A:542:PRO:HA	1:A:543:PRO:HD3	1.96	0.41
1:A:594:MET:HA	1:A:654:VAL:O	2.21	0.41
1:A:593:TYR:CD1	1:A:598:ILE:HD11	2.56	0.41
1:B:414:TRP:CE3	1:B:426:TRP:HA	2.56	0.40
1:B:570:PRO:HB3	1:B:593:TYR:CZ	2.55	0.40
1:A:685:VAL:HA	1:A:686:PRO:HD3	1.94	0.40
1:A:379:SER:HB3	7:A:1144:HOH:O	2.21	0.40

There are no symmetry-related clashes.

## 5.3 Torsion angles ⓘ

### 5.3.1 Protein backbone ⓘ

In the following table, the Percentiles column shows the percent Ramachandran outliers of the chain as a percentile score with respect to all X-ray entries followed by that with respect to entries of similar resolution.

The Analysed column shows the number of residues for which the backbone conformation was analysed, and the total number of residues.

Mol	Chain	Analysed	Favoured	Allowed	Outliers	Percentiles	
1	A	416/421 (99%)	407 (98%)	9 (2%)	0	100	100

*Continued on next page...*

*Continued from previous page...*

Mol	Chain	Analysed	Favoured	Allowed	Outliers	Percentiles	
1	B	410/421 (97%)	398 (97%)	12 (3%)	0	100	100
All	All	826/842 (98%)	805 (98%)	21 (2%)	0	100	100

There are no Ramachandran outliers to report.

### 5.3.2 Protein sidechains ⓘ

In the following table, the Percentiles column shows the percent sidechain outliers of the chain as a percentile score with respect to all X-ray entries followed by that with respect to entries of similar resolution.

The Analysed column shows the number of residues for which the sidechain conformation was analysed, and the total number of residues.

Mol	Chain	Analysed	Rotameric	Outliers	Percentiles	
1	A	376/376 (100%)	367 (98%)	9 (2%)	54	43
1	B	370/376 (98%)	368 (100%)	2 (0%)	91	90
All	All	746/752 (99%)	735 (98%)	11 (2%)	70	63

All (11) residues with a non-rotameric sidechain are listed below:

Mol	Chain	Res	Type
1	A	304	ARG
1	A	327	LEU
1	A	351	GLU
1	A	353	VAL
1	A	386	LEU
1	A	390	ASN
1	A	528	LEU
1	A	552	ARG
1	A	625	LYS
1	B	528	LEU
1	B	552	ARG

Some sidechains can be flipped to improve hydrogen bonding and reduce clashes. There are no such sidechains identified.

### 5.3.3 RNA ⓘ

There are no RNA molecules in this entry.

## 5.4 Non-standard residues in protein, DNA, RNA chains ⓘ

There are no non-standard protein/DNA/RNA residues in this entry.

## 5.5 Carbohydrates ⓘ

There are no carbohydrates in this entry.

## 5.6 Ligand geometry ⓘ

Of 10 ligands modelled in this entry, 1 is monoatomic - leaving 9 for Mogul analysis.

In the following table, the Counts columns list the number of bonds (or angles) for which Mogul statistics could be retrieved, the number of bonds (or angles) that are observed in the model and the number of bonds (or angles) that are defined in the chemical component dictionary. The Link column lists molecule types, if any, to which the group is linked. The Z score for a bond length (or angle) is the number of standard deviations the observed value is removed from the expected value. A bond length (or angle) with  $|Z| > 2$  is considered an outlier worth inspection. RMSZ is the root-mean-square of all Z scores of the bond lengths (or angles).

Mol	Type	Chain	Res	Link	Bond lengths			Bond angles		
					Counts	RMSZ	# $ Z  > 2$	Counts	RMSZ	# $ Z  > 2$
2	HEM	A	801	1	28,50,50	2.19	6 (21%)	17,82,82	1.89	5 (29%)
3	H4B	A	802	-	14,18,18	0.81	0	12,26,26	2.32	4 (33%)
4	8J4	A	803	-	25,26,26	3.14	5 (20%)	33,35,35	2.42	8 (24%)
5	GOL	A	804	-	5,5,5	0.36	0	5,5,5	0.17	0
2	HEM	B	801	1	28,50,50	2.22	6 (21%)	17,82,82	1.89	5 (29%)
3	H4B	B	802	-	14,18,18	0.93	1 (7%)	12,26,26	2.46	4 (33%)
4	8J4	B	803	-	25,26,26	3.07	5 (20%)	33,35,35	2.50	9 (27%)
5	GOL	B	804	-	5,5,5	0.34	0	5,5,5	0.22	0
5	GOL	B	805	-	5,5,5	0.40	0	5,5,5	0.36	0

In the following table, the Chirals column lists the number of chiral outliers, the number of chiral centers analysed, the number of these observed in the model and the number defined in the chemical component dictionary. Similar counts are reported in the Torsion and Rings columns. '-' means no outliers of that kind were identified.

Mol	Type	Chain	Res	Link	Chirals	Torsions	Rings
2	HEM	A	801	1	-	0/6/54/54	0/0/8/8
3	H4B	A	802	-	-	0/8/17/17	0/2/2/2
4	8J4	A	803	-	-	0/9/19/19	0/3/3/3
5	GOL	A	804	-	-	0/4/4/4	0/0/0/0
2	HEM	B	801	1	-	0/6/54/54	0/0/8/8

*Continued on next page...*

*Continued from previous page...*

Mol	Type	Chain	Res	Link	Chirals	Torsions	Rings
3	H4B	B	802	-	-	0/8/17/17	0/2/2/2
4	8J4	B	803	-	-	0/9/19/19	0/3/3/3
5	GOL	B	804	-	-	0/4/4/4	0/0/0/0
5	GOL	B	805	-	-	0/4/4/4	0/0/0/0

All (23) bond length outliers are listed below:

Mol	Chain	Res	Type	Atoms	Z	Observed(Å)	Ideal(Å)
4	A	803	8J4	C09-C10	-10.80	1.38	1.51
4	B	803	8J4	C09-C10	-10.77	1.38	1.51
4	A	803	8J4	C06-C05	-6.89	1.39	1.51
4	B	803	8J4	C06-C05	-6.66	1.40	1.51
4	A	803	8J4	C07-C06	-5.81	1.40	1.52
4	B	803	8J4	C07-C06	-5.58	1.40	1.52
2	A	801	HEM	C3B-C2B	-5.14	1.33	1.40
4	A	803	8J4	C09-C08	-4.91	1.37	1.52
2	B	801	HEM	C3B-C2B	-4.80	1.34	1.40
2	B	801	HEM	C3C-C2C	-4.69	1.34	1.40
4	B	803	8J4	C09-C08	-4.52	1.39	1.52
4	B	803	8J4	C07-C08	-4.31	1.40	1.52
4	A	803	8J4	C07-C08	-4.30	1.40	1.52
2	A	801	HEM	C3C-C2C	-3.79	1.35	1.40
3	B	802	H4B	C4-C4A	-2.33	1.38	1.41
2	A	801	HEM	C4D-ND	2.60	1.39	1.36
2	B	801	HEM	C4D-ND	3.15	1.40	1.36
2	B	801	HEM	C3B-CAB	3.45	1.54	1.47
2	A	801	HEM	C3C-CAC	3.61	1.54	1.47
2	B	801	HEM	C3C-CAC	3.70	1.55	1.47
2	A	801	HEM	C3B-CAB	3.77	1.55	1.47
2	B	801	HEM	C3D-C2D	5.16	1.53	1.37
2	A	801	HEM	C3D-C2D	5.38	1.53	1.37

All (35) bond angle outliers are listed below:

Mol	Chain	Res	Type	Atoms	Z	Observed(°)	Ideal(°)
2	A	801	HEM	CBA-CAA-C2A	-4.88	103.16	112.48
2	B	801	HEM	CBA-CAA-C2A	-4.38	104.11	112.48
3	B	802	H4B	N3-C2-N1	-3.02	120.55	125.45
2	B	801	HEM	CAD-CBD-CGD	-3.02	107.51	112.66
3	A	802	H4B	N3-C2-N1	-2.81	120.89	125.45
2	A	801	HEM	C1D-C2D-C3D	-2.72	105.10	107.00
2	B	801	HEM	C1D-C2D-C3D	-2.72	105.11	107.00

*Continued on next page...*

*Continued from previous page...*

Mol	Chain	Res	Type	Atoms	Z	Observed(°)	Ideal(°)
2	A	801	HEM	CMA-C3A-C4A	-2.58	124.49	128.46
2	B	801	HEM	CMA-C3A-C4A	-2.58	124.49	128.46
2	A	801	HEM	CBD-CAD-C3D	-2.17	108.33	112.47
4	B	803	8J4	C05-C10-N01	-2.04	121.30	122.82
4	A	803	8J4	C03-C02-N01	-2.01	119.29	121.68
4	B	803	8J4	C02-N01-C10	2.02	121.87	119.12
4	A	803	8J4	C02-N01-C10	2.15	122.05	119.12
3	A	802	H4B	C2-N1-C8A	2.17	119.40	114.51
2	B	801	HEM	CMC-C2C-C3C	2.19	128.95	124.89
4	B	803	8J4	C04-C05-C10	2.24	118.50	117.41
2	A	801	HEM	CMC-C2C-C3C	2.25	129.06	124.89
3	B	802	H4B	C2-N1-C8A	2.49	120.12	114.51
4	B	803	8J4	C06-C07-C08	2.94	119.74	112.81
4	A	803	8J4	C06-C07-C08	3.00	119.89	112.81
3	B	802	H4B	C4-N3-C2	3.35	120.88	116.06
3	A	802	H4B	C4-N3-C2	3.39	120.93	116.06
4	A	803	8J4	O12-C11-C08	3.39	115.57	107.81
4	A	803	8J4	C10-C09-C08	3.48	120.75	112.63
4	B	803	8J4	C10-C09-C08	3.52	120.83	112.63
4	A	803	8J4	C07-C06-C05	3.87	120.05	112.86
4	B	803	8J4	C07-C06-C05	3.94	120.18	112.86
4	B	803	8J4	O12-C11-C08	4.16	117.32	107.81
3	A	802	H4B	C4-C4A-C8A	5.10	119.18	114.56
3	B	802	H4B	C4-C4A-C8A	5.58	119.62	114.56
4	B	803	8J4	C07-C08-C11	6.48	124.78	111.42
4	A	803	8J4	C07-C08-C11	6.72	125.28	111.42
4	A	803	8J4	C07-C08-C09	8.47	119.33	108.97
4	B	803	8J4	C07-C08-C09	8.52	119.40	108.97

There are no chirality outliers.

There are no torsion outliers.

There are no ring outliers.

5 monomers are involved in 8 short contacts:

Mol	Chain	Res	Type	Clashes	Symm-Clashes
2	A	801	HEM	3	0
4	A	803	8J4	2	0
2	B	801	HEM	2	0
4	B	803	8J4	1	0
5	B	804	GOL	1	0



## 5.7 Other polymers [i](#)

There are no such residues in this entry.

## 5.8 Polymer linkage issues [i](#)

There are no chain breaks in this entry.

## 6 Fit of model and data

### 6.1 Protein, DNA and RNA chains

In the following table, the column labelled ‘#RSRZ> 2’ contains the number (and percentage) of RSRZ outliers, followed by percent RSRZ outliers for the chain as percentile scores relative to all X-ray entries and entries of similar resolution. The OWAB column contains the minimum, median, 95<sup>th</sup> percentile and maximum values of the occupancy-weighted average B-factor per residue. The column labelled ‘Q< 0.9’ lists the number of (and percentage) of residues with an average occupancy less than 0.9.

Mol	Chain	Analysed	<RSRZ>	#RSRZ>2	OWAB(Å <sup>2</sup> )	Q<0.9
1	A	416/421 (98%)	0.70	38 (9%) 10 15	28, 40, 69, 115	0
1	B	409/421 (97%)	1.03	61 (14%) 3 4	30, 44, 80, 127	0
All	All	825/842 (97%)	0.86	99 (12%) 5 8	28, 42, 75, 127	0

All (99) RSRZ outliers are listed below:

Mol	Chain	Res	Type	RSRZ
1	B	357	ASP	7.8
1	B	493	PRO	7.7
1	B	720	VAL	6.9
1	B	721	TRP	6.2
1	A	302	CYS	5.2
1	B	305	PHE	4.8
1	A	351	GLU	4.8
1	B	496	SER	4.5
1	B	685	VAL	4.4
1	B	684	ILE	4.4
1	B	683	TRP	4.3
1	A	395	THR	4.2
1	B	360	PHE	4.2
1	A	353	VAL	4.2
1	A	344	SER	4.0
1	B	718	THR	4.0
1	A	685	VAL	3.8
1	B	356	LYS	3.7
1	B	327	LEU	3.6
1	B	682	VAL	3.6
1	A	305	PHE	3.5
1	B	326	THR	3.5
1	B	686	PRO	3.4
1	B	716	TRP	3.4

*Continued on next page...*

*Continued from previous page...*

Mol	Chain	Res	Type	RSRZ
1	B	304	ARG	3.3
1	B	624	ARG	3.2
1	B	396	THR	3.2
1	A	352	ASP	3.1
1	A	343	PRO	3.1
1	B	719	HIS	3.1
1	A	692	ILE	3.1
1	B	709	PHE	3.1
1	B	497	THR	3.1
1	B	571	ALA	3.1
1	B	395	THR	3.0
1	A	360	PHE	3.0
1	B	560	LYS	3.0
1	A	624	ARG	2.9
1	B	600	VAL	2.9
1	B	394	ASP	2.9
1	A	572	VAL	2.9
1	A	687	PRO	2.9
1	B	687	PRO	2.9
1	A	688	MET	2.9
1	B	589	PHE	2.9
1	A	357	ASP	2.8
1	A	686	PRO	2.8
1	B	491	LYS	2.8
1	B	358	GLN	2.8
1	B	570	PRO	2.8
1	A	304	ARG	2.8
1	A	684	ILE	2.8
1	A	696	PHE	2.8
1	A	396	THR	2.7
1	B	320	THR	2.7
1	B	689	SER	2.7
1	A	682	VAL	2.7
1	B	692	ILE	2.7
1	B	474	LYS	2.7
1	B	512	GLN	2.6
1	A	681	TRP	2.6
1	A	589	PHE	2.6
1	B	374	ILE	2.6
1	A	356	LYS	2.5
1	A	391	LYS	2.5
1	B	505	GLN	2.5

*Continued on next page...*

*Continued from previous page...*

Mol	Chain	Res	Type	RSRZ
1	A	355	THR	2.5
1	A	327	LEU	2.5
1	A	387	GLU	2.4
1	B	316	VAL	2.4
1	B	688	MET	2.4
1	A	683	TRP	2.4
1	B	464	ILE	2.4
1	A	620	ASN	2.4
1	B	354	ALA	2.4
1	B	598	ILE	2.4
1	A	334	TYR	2.4
1	B	386	LEU	2.3
1	B	417	ALA	2.3
1	B	342[A]	HIS	2.3
1	B	596	THR	2.3
1	B	492	GLN	2.3
1	B	681	TRP	2.3
1	B	387	GLU	2.3
1	B	494	ASP	2.3
1	B	355	THR	2.3
1	B	557	GLU	2.3
1	A	695	VAL	2.3
1	A	588	PRO	2.2
1	B	472	ASP	2.2
1	B	420	CYS	2.2
1	A	394	ASP	2.1
1	A	342[A]	HIS	2.1
1	B	377	PHE	2.1
1	B	690	GLY	2.1
1	A	596	THR	2.0
1	B	344	SER	2.0
1	B	391	LYS	2.0
1	A	635	LEU	2.0

## 6.2 Non-standard residues in protein, DNA, RNA chains ⓘ

There are no non-standard protein/DNA/RNA residues in this entry.

## 6.3 Carbohydrates ⓘ

There are no carbohydrates in this entry.

## 6.4 Ligands [i](#)

In the following table, the Atoms column lists the number of modelled atoms in the group and the number defined in the chemical component dictionary. LLDF column lists the quality of electron density of the group with respect to its neighbouring residues in protein, DNA or RNA chains. The B-factors column lists the minimum, median, 95<sup>th</sup> percentile and maximum values of B factors of atoms in the group. The column labelled 'Q< 0.9' lists the number of atoms with occupancy less than 0.9.

Mol	Type	Chain	Res	Atoms	RSCC	RSR	LLDF	B-factors(Å <sup>2</sup> )	Q<0.9
5	GOL	A	804	6/6	0.58	0.26	9.52	59,68,69,70	0
5	GOL	B	804	6/6	0.70	0.28	6.04	70,75,84,93	0
5	GOL	B	805	6/6	0.74	0.24	4.05	46,57,62,68	0
4	8J4	A	803	24/24	0.86	0.29	3.14	29,59,115,120	0
4	8J4	B	803	24/24	0.85	0.31	2.35	33,57,91,104	0
2	HEM	A	801	43/43	0.96	0.18	0.67	23,33,52,59	0
3	H4B	A	802	17/17	0.91	0.17	0.21	35,42,53,54	0
3	H4B	B	802	17/17	0.93	0.22	0.21	33,45,54,55	0
2	HEM	B	801	43/43	0.96	0.19	0.03	25,35,52,62	0
6	ZN	A	805	1/1	0.99	0.04	-2.94	40,40,40,40	0

## 6.5 Other polymers [i](#)

There are no such residues in this entry.