



Full wwPDB X-ray Structure Validation Report ⓘ

Feb 15, 2017 – 12:29 am GMT

PDB ID : 3UPT
Title : Crystal structure of a transketolase from Burkholderia pseudomallei bound to TPP, calcium and ribose-5-phosphate
Authors : Seattle Structural Genomics Center for Infectious Disease (SSGCID)
Deposited on : 2011-11-18
Resolution : 2.40 Å(reported)

This is a Full wwPDB X-ray Structure Validation Report for a publicly released PDB entry.

We welcome your comments at validation@mail.wwpdb.org

A user guide is available at

<http://wwpdb.org/validation/2016/XrayValidationReportHelp>

with specific help available everywhere you see the ⓘ symbol.

The following versions of software and data (see [references ⓘ](#)) were used in the production of this report:

MolProbity : 4.02b-467
Mogul : 1.7.2 (RC1), CSD as538be (2017)
Xtriage (Phenix) : 1.9-1692
EDS : trunk28620
Percentile statistics : 20161228.v01 (using entries in the PDB archive December 28th 2016)
Refmac : 5.8.0135
CCP4 : 6.5.0
Ideal geometry (proteins) : Engh & Huber (2001)
Ideal geometry (DNA, RNA) : Parkinson et al. (1996)
Validation Pipeline (wwPDB-VP) : recalc28949

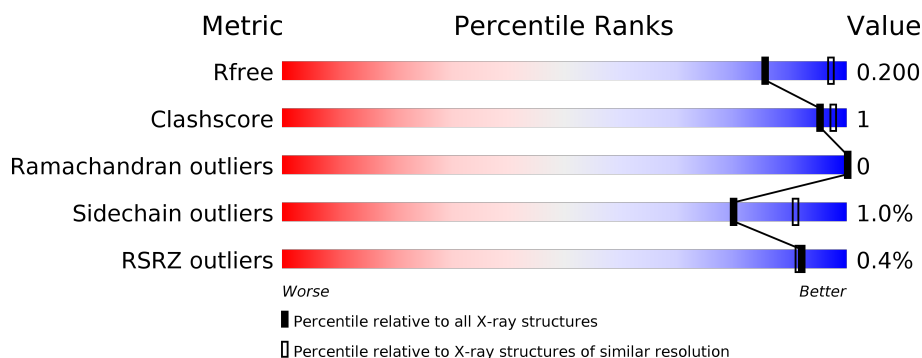
1 Overall quality at a glance

The following experimental techniques were used to determine the structure:

X-RAY DIFFRACTION



The reported resolution of this entry is 2.40 Å.

Percentile scores (ranging between 0-100) for global validation metrics of the entry are shown in the following graphic. The table shows the number of entries on which the scores are based.



Metric	Whole archive (#Entries)	Similar resolution (#Entries, resolution range(Å))
R_{free}	100719	3166 (2.40-2.40)
Clashscore	112137	3674 (2.40-2.40)
Ramachandran outliers	110173	3616 (2.40-2.40)
Sidechain outliers	110143	3617 (2.40-2.40)
RSRZ outliers	101464	3195 (2.40-2.40)

The table below summarises the geometric issues observed across the polymeric chains and their fit to the electron density. The red, orange, yellow and green segments on the lower bar indicate the fraction of residues that contain outliers for ≥ 3 , 2, 1 and 0 types of geometric quality criteria. A grey segment represents the fraction of residues that are not modelled. The numeric value for each fraction is indicated below the corresponding segment, with a dot representing fractions $\leq 5\%$. The upper red bar (where present) indicates the fraction of residues that have poor fit to the electron density. The numeric value is given above the bar.

Mol	Chain	Length	Quality of chain
1	A	711	 91% 6%
1	B	711	 90% 6%

The following table lists non-polymeric compounds, carbohydrate monomers and non-standard residues in protein, DNA, RNA chains that are outliers for geometric or electron-density-fit criteria:

Mol	Type	Chain	Res	Chirality	Geometry	Clashes	Electron density
4	RP5	A	693	-	-	-	X
4	RP5	A	694	-	-	-	X

2 Entry composition

There are 6 unique types of molecules in this entry. The entry contains 10970 atoms, of which 0 are hydrogens and 0 are deuteriums.

In the tables below, the ZeroOcc column contains the number of atoms modelled with zero occupancy, the AltConf column contains the number of residues with at least one atom in alternate conformation and the Trace column contains the number of residues modelled with at most 2 atoms.

- Molecule 1 is a protein called Transketolase.

Mol	Chain	Residues	Atoms					ZeroOcc	AltConf	Trace
1	A	671	Total	C	N	O	S	0	1	0
			5037	3187	899	933	18			
1	B	666	Total	C	N	O	S	0	2	0
			5026	3177	895	936	18			

There are 42 discrepancies between the modelled and reference sequences:

Chain	Residue	Modelled	Actual	Comment	Reference
A	-20	MET	-	EXPRESSION TAG	UNP Q2SZA7
A	-19	ALA	-	EXPRESSION TAG	UNP Q2SZA7
A	-18	HIS	-	EXPRESSION TAG	UNP Q2SZA7
A	-17	HIS	-	EXPRESSION TAG	UNP Q2SZA7
A	-16	HIS	-	EXPRESSION TAG	UNP Q2SZA7
A	-15	HIS	-	EXPRESSION TAG	UNP Q2SZA7
A	-14	HIS	-	EXPRESSION TAG	UNP Q2SZA7
A	-13	HIS	-	EXPRESSION TAG	UNP Q2SZA7
A	-12	MET	-	EXPRESSION TAG	UNP Q2SZA7
A	-11	GLY	-	EXPRESSION TAG	UNP Q2SZA7
A	-10	THR	-	EXPRESSION TAG	UNP Q2SZA7
A	-9	LEU	-	EXPRESSION TAG	UNP Q2SZA7
A	-8	GLU	-	EXPRESSION TAG	UNP Q2SZA7
A	-7	ALA	-	EXPRESSION TAG	UNP Q2SZA7
A	-6	GLN	-	EXPRESSION TAG	UNP Q2SZA7
A	-5	THR	-	EXPRESSION TAG	UNP Q2SZA7
A	-4	GLN	-	EXPRESSION TAG	UNP Q2SZA7
A	-3	GLY	-	EXPRESSION TAG	UNP Q2SZA7
A	-2	PRO	-	EXPRESSION TAG	UNP Q2SZA7
A	-1	GLY	-	EXPRESSION TAG	UNP Q2SZA7
A	0	SER	-	EXPRESSION TAG	UNP Q2SZA7
B	-20	MET	-	EXPRESSION TAG	UNP Q2SZA7
B	-19	ALA	-	EXPRESSION TAG	UNP Q2SZA7
B	-18	HIS	-	EXPRESSION TAG	UNP Q2SZA7
B	-17	HIS	-	EXPRESSION TAG	UNP Q2SZA7

Continued on next page...

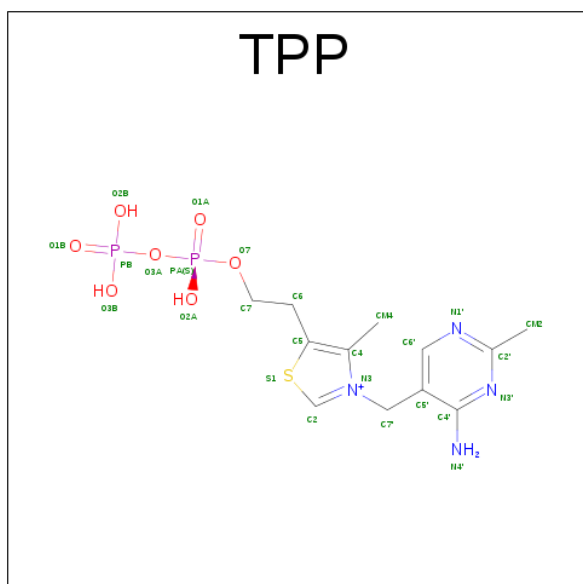
Continued from previous page...

Chain	Residue	Modelled	Actual	Comment	Reference
B	-16	HIS	-	EXPRESSION TAG	UNP Q2SZA7
B	-15	HIS	-	EXPRESSION TAG	UNP Q2SZA7
B	-14	HIS	-	EXPRESSION TAG	UNP Q2SZA7
B	-13	HIS	-	EXPRESSION TAG	UNP Q2SZA7
B	-12	MET	-	EXPRESSION TAG	UNP Q2SZA7
B	-11	GLY	-	EXPRESSION TAG	UNP Q2SZA7
B	-10	THR	-	EXPRESSION TAG	UNP Q2SZA7
B	-9	LEU	-	EXPRESSION TAG	UNP Q2SZA7
B	-8	GLU	-	EXPRESSION TAG	UNP Q2SZA7
B	-7	ALA	-	EXPRESSION TAG	UNP Q2SZA7
B	-6	GLN	-	EXPRESSION TAG	UNP Q2SZA7
B	-5	THR	-	EXPRESSION TAG	UNP Q2SZA7
B	-4	GLN	-	EXPRESSION TAG	UNP Q2SZA7
B	-3	GLY	-	EXPRESSION TAG	UNP Q2SZA7
B	-2	PRO	-	EXPRESSION TAG	UNP Q2SZA7
B	-1	GLY	-	EXPRESSION TAG	UNP Q2SZA7
B	0	SER	-	EXPRESSION TAG	UNP Q2SZA7

- Molecule 2 is CALCIUM ION (three-letter code: CA) (formula: Ca).

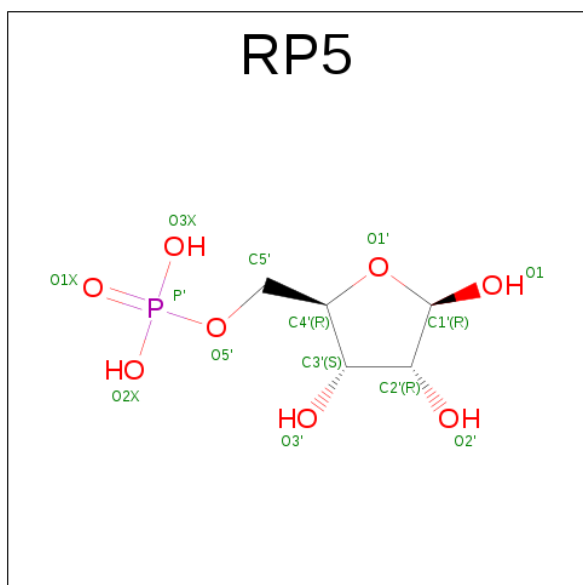
Mol	Chain	Residues	Atoms	ZeroOcc	AltConf
2	B	1	Total Ca 1 1	0	0
2	A	1	Total Ca 1 1	0	0

- Molecule 3 is THIAMINE DIPHOSPHATE (three-letter code: TPP) (formula: C₁₂H₁₉N₄O₇P₂S).



Mol	Chain	Residues	Atoms					ZeroOcc	AltConf
3	A	1	Total	C	N	O	P	S	
			26	12	4	7	2	1	0
3	B	1	Total	C	N	O	P	S	
			26	12	4	7	2	1	0

- Molecule 4 is 5-O-PHOSPHONO-BETA-D-RIBOFURANOSE (three-letter code: RP5) (formula: C₅H₁₁O₈P).



Mol	Chain	Residues	Atoms				ZeroOcc	AltConf
4	A	1	Total	C	O	P		
			14	5	8	1	0	0
4	A	1	Total	C	O	P		
			14	5	8	1	0	0

- Molecule 5 is BROMIDE ION (three-letter code: BR) (formula: Br).

Mol	Chain	Residues	Atoms		ZeroOcc	AltConf
5	B	2	Total	Br		
			2	2	0	0
5	A	2	Total	Br		
			2	2	0	0

- Molecule 6 is water.

Mol	Chain	Residues	Atoms		ZeroOcc	AltConf
6	A	488	Total	O		
			488	488	0	0

Continued on next page...

Continued from previous page...

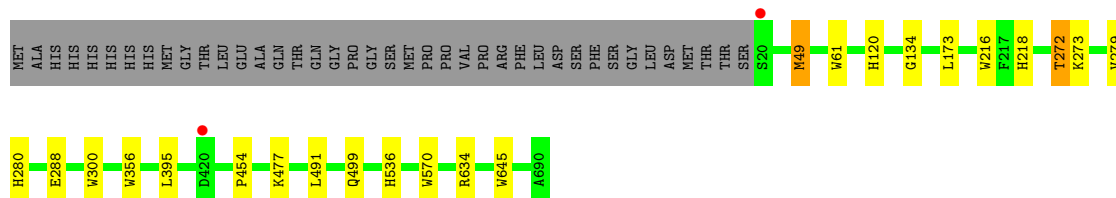
Mol	Chain	Residues	Atoms		ZeroOcc	AltConf
6	B	333	Total 333	O 333	0	0

3 Residue-property plots [i](#)

These plots are drawn for all protein, RNA and DNA chains in the entry. The first graphic for a chain summarises the proportions of the various outlier classes displayed in the second graphic. The second graphic shows the sequence view annotated by issues in geometry and electron density. Residues are color-coded according to the number of geometric quality criteria for which they contain at least one outlier: green = 0, yellow = 1, orange = 2 and red = 3 or more. A red dot above a residue indicates a poor fit to the electron density ($RSRZ > 2$). Stretches of 2 or more consecutive residues without any outlier are shown as a green connector. Residues present in the sample, but not in the model, are shown in grey.

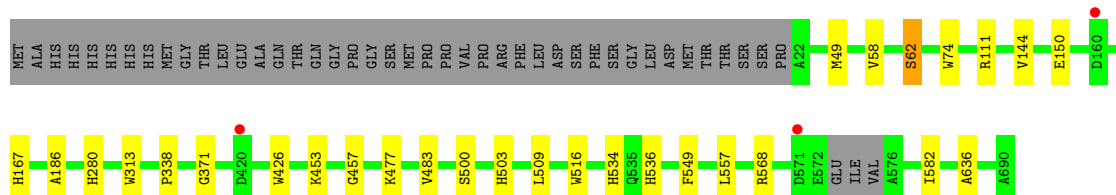
- Molecule 1: Transketolase

Chain A:  91% 6%



- Molecule 1: Transketolase

Chain B:  90% 6%



4 Data and refinement statistics

Property	Value	Source
Space group	P 41 21 2	Depositor
Cell constants a, b, c, α , β , γ	146.98Å 146.98Å 142.87Å 90.00° 90.00° 90.00°	Depositor
Resolution (Å)	50.00 – 2.40 19.99 – 2.40	Depositor EDS
% Data completeness (in resolution range)	99.7 (50.00-2.40) 100.0 (19.99-2.40)	Depositor EDS
R_{merge}	0.15	Depositor
R_{sym}	(Not available)	Depositor
$\langle I/\sigma(I) \rangle$ ¹	4.94 (at 2.41Å)	Xtriage
Refinement program	REFMAC 5.6.0117	Depositor
R, R_{free}	0.151 , 0.200 0.151 , 0.200	Depositor DCC
R_{free} test set	3115 reflections (5.34%)	DCC
Wilson B-factor (Å ²)	20.2	Xtriage
Anisotropy	0.024	Xtriage
Bulk solvent k_{sol} (e/Å ³), B_{sol} (Å ²)	0.34 , 34.5	EDS
L-test for twinning ²	$\langle L \rangle = 0.49$, $\langle L^2 \rangle = 0.33$	Xtriage
Estimated twinning fraction	0.012 for -h,-l,-k 0.008 for l,-k,h	Xtriage
F_o, F_c correlation	0.96	EDS
Total number of atoms	10970	wwPDB-VP
Average B, all atoms (Å ²)	19.0	wwPDB-VP

Xtriage's analysis on translational NCS is as follows: *The largest off-origin peak in the Patterson function is 4.99% of the height of the origin peak. No significant pseudotranslation is detected.*

¹Intensities estimated from amplitudes.

²Theoretical values of $\langle |L| \rangle$, $\langle L^2 \rangle$ for acentric reflections are 0.5, 0.333 respectively for untwinned datasets, and 0.375, 0.2 for perfectly twinned datasets.

5 Model quality [i](#)

5.1 Standard geometry [i](#)

Bond lengths and bond angles in the following residue types are not validated in this section: CA, RP5, BR, TPP

The Z score for a bond length (or angle) is the number of standard deviations the observed value is removed from the expected value. A bond length (or angle) with $|Z| > 5$ is considered an outlier worth inspection. RMSZ is the root-mean-square of all Z scores of the bond lengths (or angles).

Mol	Chain	Bond lengths		Bond angles	
		RMSZ	$\# Z > 5$	RMSZ	$\# Z > 5$
1	A	0.74	6/5163 (0.1%)	0.72	0/7033
1	B	0.72	4/5154 (0.1%)	0.71	1/7016 (0.0%)
All	All	0.73	10/10317 (0.1%)	0.72	1/14049 (0.0%)

All (10) bond length outliers are listed below:

Mol	Chain	Res	Type	Atoms	Z	Observed(Å)	Ideal(Å)
1	A	356	TRP	CD2-CE2	6.01	1.48	1.41
1	B	313	TRP	CD2-CE2	5.97	1.48	1.41
1	B	516	TRP	CD2-CE2	5.76	1.48	1.41
1	A	61	TRP	CD2-CE2	5.29	1.47	1.41
1	B	426	TRP	CD2-CE2	5.13	1.47	1.41
1	A	645	TRP	CD2-CE2	5.11	1.47	1.41
1	B	74	TRP	CD2-CE2	5.07	1.47	1.41
1	A	216	TRP	CD2-CE2	5.06	1.47	1.41
1	A	570	TRP	CD2-CE2	5.03	1.47	1.41
1	A	300	TRP	CD2-CE2	5.01	1.47	1.41

All (1) bond angle outliers are listed below:

Mol	Chain	Res	Type	Atoms	Z	Observed(°)	Ideal(°)
1	B	111	ARG	NE-CZ-NH2	-5.24	117.68	120.30

There are no chirality outliers.

There are no planarity outliers.

5.2 Too-close contacts ⓘ

In the following table, the Non-H and H(model) columns list the number of non-hydrogen atoms and hydrogen atoms in the chain respectively. The H(added) column lists the number of hydrogen atoms added and optimized by MolProbity. The Clashes column lists the number of clashes within the asymmetric unit, whereas Symm-Clashes lists symmetry related clashes.

Mol	Chain	Non-H	H(model)	H(added)	Clashes	Symm-Clashes
1	A	5037	0	4879	11	0
1	B	5026	0	4867	11	0
2	A	1	0	0	0	0
2	B	1	0	0	0	0
3	A	26	0	16	3	0
3	B	26	0	16	3	0
4	A	28	0	18	4	0
5	A	2	0	0	0	0
5	B	2	0	0	0	0
6	A	488	0	0	2	0
6	B	333	0	0	0	0
All	All	10970	0	9796	28	0

The all-atom clashscore is defined as the number of clashes found per 1000 atoms (including hydrogen atoms). The all-atom clashscore for this structure is 1.

All (28) close contacts within the same asymmetric unit are listed below, sorted by their clash magnitude.

Atom-1	Atom-2	Interatomic distance (Å)	Clash overlap (Å)
4:A:693:RP5:O1	4:A:693:RP5:H5'2	1.83	0.77
3:B:692:TPP:H2	3:B:692:TPP:HN42	1.55	0.71
1:B:534[A]:HIS:NE2	1:B:536:HIS:HB2	2.15	0.61
3:B:692:TPP:C2	3:B:692:TPP:HN42	2.16	0.57
1:A:273:LYS:HB3	1:A:279:VAL:HG13	1.88	0.56
1:A:272:THR:HB	1:A:288:GLU:OE1	2.06	0.55
1:B:58:VAL:O	1:B:62:SER:HB3	2.07	0.55
1:B:457:GLY:HA2	1:B:483:VAL:O	2.12	0.49
1:B:371:GLY:HA2	1:B:549:PHE:CE1	2.48	0.48
3:A:692:TPP:H2	6:A:1108:HOH:O	2.13	0.47
4:A:694:RP5:H1'	1:B:280:HIS:CD2	2.51	0.46
1:A:491:LEU:HD21	1:A:499:GLN:HA	1.98	0.45
1:B:500:SER:OG	1:B:503:HIS:HB2	2.17	0.45
1:A:280:HIS:CD2	4:A:693:RP5:H1'	2.52	0.45
1:A:280:HIS:ND1	3:A:692:TPP:O1B	2.50	0.44
1:A:477:LYS:HD2	1:A:536:HIS:NE2	2.34	0.43

Continued on next page...

Continued from previous page...

Atom-1	Atom-2	Interatomic distance (Å)	Clash overlap (Å)
1:A:49:MET:C	1:A:49:MET:SD	2.97	0.43
3:B:692:TPP:N4'	3:B:692:TPP:C2	2.82	0.42
1:A:120:HIS:CD2	1:A:134:GLY:HA2	2.54	0.42
1:B:144:VAL:HG21	1:B:186:ALA:HB1	2.01	0.42
3:A:692:TPP:H2	3:A:692:TPP:HN42	1.84	0.42
1:B:453:LYS:HE2	1:B:453:LYS:HB2	1.85	0.42
1:A:280:HIS:NE2	4:A:693:RP5:H1'	2.35	0.41
1:A:395:LEU:O	1:A:454:PRO:HA	2.20	0.41
1:B:150:GLU:HG3	1:B:167:HIS:CD2	2.55	0.41
1:B:582:ILE:O	1:B:636:ALA:HA	2.20	0.41
1:A:218:HIS:HB3	6:A:1149:HOH:O	2.20	0.41
1:B:477:LYS:HD3	1:B:536:HIS:NE2	2.36	0.40

There are no symmetry-related clashes.

5.3 Torsion angles ⓘ

5.3.1 Protein backbone ⓘ

In the following table, the Percentiles column shows the percent Ramachandran outliers of the chain as a percentile score with respect to all X-ray entries followed by that with respect to entries of similar resolution.

The Analysed column shows the number of residues for which the backbone conformation was analysed, and the total number of residues.

Mol	Chain	Analysed	Favoured	Allowed	Outliers	Percentiles	
1	A	670/711 (94%)	650 (97%)	20 (3%)	0	100	100
1	B	664/711 (93%)	646 (97%)	18 (3%)	0	100	100
All	All	1334/1422 (94%)	1296 (97%)	38 (3%)	0	100	100

There are no Ramachandran outliers to report.

5.3.2 Protein sidechains ⓘ

In the following table, the Percentiles column shows the percent sidechain outliers of the chain as a percentile score with respect to all X-ray entries followed by that with respect to entries of similar resolution.

The Analysed column shows the number of residues for which the sidechain conformation was

analysed, and the total number of residues.

Mol	Chain	Analysed	Rotameric	Outliers	Percentiles	
1	A	497/548 (91%)	493 (99%)	4 (1%)	85	93
1	B	499/548 (91%)	493 (99%)	6 (1%)	75	88
All	All	996/1096 (91%)	986 (99%)	10 (1%)	80	91

All (10) residues with a non-rotameric sidechain are listed below:

Mol	Chain	Res	Type
1	A	49	MET
1	A	173	LEU
1	A	272	THR
1	A	634	ARG
1	B	49	MET
1	B	62	SER
1	B	338	PRO
1	B	509	LEU
1	B	557	LEU
1	B	568	ARG

Some sidechains can be flipped to improve hydrogen bonding and reduce clashes. There are no such sidechains identified.

5.3.3 RNA [i](#)

There are no RNA molecules in this entry.

5.4 Non-standard residues in protein, DNA, RNA chains [i](#)

There are no non-standard protein/DNA/RNA residues in this entry.

5.5 Carbohydrates [i](#)

There are no carbohydrates in this entry.

5.6 Ligand geometry [i](#)

Of 10 ligands modelled in this entry, 6 are monoatomic - leaving 4 for Mogul analysis.

In the following table, the Counts columns list the number of bonds (or angles) for which Mogul statistics could be retrieved, the number of bonds (or angles) that are observed in the model and the number of bonds (or angles) that are defined in the chemical component dictionary. The Link column lists molecule types, if any, to which the group is linked. The Z score for a bond length (or angle) is the number of standard deviations the observed value is removed from the expected value. A bond length (or angle) with $|Z| > 2$ is considered an outlier worth inspection. RMSZ is the root-mean-square of all Z scores of the bond lengths (or angles).

Mol	Type	Chain	Res	Link	Bond lengths			Bond angles		
					Counts	RMSZ	# $ Z > 2$	Counts	RMSZ	# $ Z > 2$
3	TPP	A	692	2	21,27,27	1.35	2 (9%)	25,40,40	1.96	7 (28%)
4	RP5	A	693	-	14,14,14	0.75	0	20,21,21	1.53	4 (20%)
4	RP5	A	694	-	14,14,14	0.58	0	20,21,21	1.82	5 (25%)
3	TPP	B	692	2	21,27,27	1.43	2 (9%)	25,40,40	1.90	7 (28%)

In the following table, the Chirals column lists the number of chiral outliers, the number of chiral centers analysed, the number of these observed in the model and the number defined in the chemical component dictionary. Similar counts are reported in the Torsion and Rings columns. '-' means no outliers of that kind were identified.

Mol	Type	Chain	Res	Link	Chirals	Torsions	Rings
3	TPP	A	692	2	-	0/16/17/17	0/2/2/2
4	RP5	A	693	-	-	0/6/22/22	0/1/1/1
4	RP5	A	694	-	-	0/6/22/22	0/1/1/1
3	TPP	B	692	2	-	0/16/17/17	0/2/2/2

All (4) bond length outliers are listed below:

Mol	Chain	Res	Type	Atoms	Z	Observed(Å)	Ideal(Å)
3	B	692	TPP	C4-N3	-4.18	1.36	1.39
3	A	692	TPP	C4-N3	-4.13	1.36	1.39
3	B	692	TPP	C5'-C4'	2.80	1.49	1.42
3	A	692	TPP	C5'-C4'	2.98	1.49	1.42

All (23) bond angle outliers are listed below:

Mol	Chain	Res	Type	Atoms	Z	Observed(°)	Ideal(°)
3	A	692	TPP	C5'-C7'-N3	-4.29	106.16	113.33
4	A	694	RP5	O1-C1'-O1'	-3.70	106.17	111.14
3	B	692	TPP	C5'-C7'-N3	-3.16	108.04	113.33
4	A	694	RP5	O3X-P'-O5'	-2.98	98.81	106.73
3	A	692	TPP	N1'-C2'-N3'	-2.89	120.59	125.59
3	B	692	TPP	CM4-C4-C5	-2.82	121.83	127.29

Continued on next page...

Continued from previous page...

Mol	Chain	Res	Type	Atoms	Z	Observed(°)	Ideal(°)
4	A	693	RP5	O1-C1'-O1'	-2.67	107.55	111.14
4	A	693	RP5	O1'-C4'-C5'	-2.36	101.44	109.40
3	A	692	TPP	CM4-C4-C5	-2.34	122.77	127.29
4	A	693	RP5	O2X-P'-O5'	-2.29	100.63	106.73
3	B	692	TPP	C5'-C4'-N4'	-2.13	119.12	122.22
4	A	693	RP5	O3'-C3'-C2'	-2.02	105.36	111.83
3	B	692	TPP	N4'-C4'-N3'	2.39	120.53	117.00
4	A	694	RP5	O3X-P'-O2X	2.41	117.34	107.61
3	A	692	TPP	O3B-PB-O2B	2.50	117.68	107.61
3	B	692	TPP	O3B-PB-O2B	2.59	118.05	107.61
4	A	694	RP5	O1'-C1'-C2'	3.01	108.27	104.46
4	A	694	RP5	C1'-C2'-C3'	3.17	106.32	102.30
3	A	692	TPP	CM2-C2'-N1'	3.47	120.98	117.06
3	A	692	TPP	C6'-N1'-C2'	3.48	121.90	115.88
3	B	692	TPP	C6'-N1'-C2'	3.54	121.99	115.88
3	A	692	TPP	CM4-C4-N3	4.11	127.78	122.53
3	B	692	TPP	CM4-C4-N3	4.23	127.92	122.53

There are no chirality outliers.

There are no torsion outliers.

There are no ring outliers.

4 monomers are involved in 10 short contacts:

Mol	Chain	Res	Type	Clashes	Symm-Clashes
3	A	692	TPP	3	0
4	A	693	RP5	3	0
4	A	694	RP5	1	0
3	B	692	TPP	3	0

5.7 Other polymers

There are no such residues in this entry.

5.8 Polymer linkage issues

There are no chain breaks in this entry.

6 Fit of model and data [i](#)

6.1 Protein, DNA and RNA chains [i](#)

In the following table, the column labelled ‘#RSRZ> 2’ contains the number (and percentage) of RSRZ outliers, followed by percent RSRZ outliers for the chain as percentile scores relative to all X-ray entries and entries of similar resolution. The OWAB column contains the minimum, median, 95th percentile and maximum values of the occupancy-weighted average B-factor per residue. The column labelled ‘Q< 0.9’ lists the number of (and percentage) of residues with an average occupancy less than 0.9.

Mol	Chain	Analysed	<RSRZ>	#RSRZ>2	OWAB(Å ²)	Q<0.9
1	A	671/711 (94%)	-0.93	2 (0%) 93 93	10, 16, 29, 51	0
1	B	666/711 (93%)	-0.82	3 (0%) 90 89	11, 19, 34, 52	0
All	All	1337/1422 (94%)	-0.88	5 (0%) 92 91	10, 18, 32, 52	0

All (5) RSRZ outliers are listed below:

Mol	Chain	Res	Type	RSRZ
1	B	420	ASP	2.8
1	B	160	ASP	2.2
1	B	571	ASP	2.2
1	A	20	SER	2.2
1	A	420	ASP	2.2

6.2 Non-standard residues in protein, DNA, RNA chains [i](#)

There are no non-standard protein/DNA/RNA residues in this entry.

6.3 Carbohydrates [i](#)

There are no carbohydrates in this entry.

6.4 Ligands [i](#)

In the following table, the Atoms column lists the number of modelled atoms in the group and the number defined in the chemical component dictionary. LLDF column lists the quality of electron density of the group with respect to its neighbouring residues in protein, DNA or RNA chains. The B-factors column lists the minimum, median, 95th percentile and maximum values of B factors of atoms in the group. The column labelled ‘Q< 0.9’ lists the number of atoms with occupancy less than 0.9.

Mol	Type	Chain	Res	Atoms	RSCC	RSR	LLDF	B-factors(\AA^2)	Q<0.9
4	RP5	A	694	14/14	0.83	0.30	17.99	16,18,19,19	14
4	RP5	A	693	14/14	0.93	0.15	2.90	23,30,35,37	14
3	TPP	A	692	26/26	0.98	0.09	0.51	15,19,22,22	0
3	TPP	B	692	26/26	0.98	0.09	0.45	13,19,22,22	0
5	BR	B	693	1/1	0.99	0.10	0.15	51,51,51,51	0
2	CA	A	691	1/1	0.98	0.03	-2.87	16,16,16,16	0
2	CA	B	691	1/1	1.00	0.03	-7.46	14,14,14,14	0
5	BR	A	696	1/1	0.95	0.13	-	85,85,85,85	0
5	BR	B	694	1/1	0.90	0.17	-	101,101,101,101	0
5	BR	A	695	1/1	0.98	0.20	-	92,92,92,92	0

6.5 Other polymers [i](#)

There are no such residues in this entry.