



# Full wwPDB X-ray Structure Validation Report ⓘ

Feb 14, 2017 – 04:37 am GMT

PDB ID : 1UYU  
Title : Xenon COMPLEX OF wildtype P450CAM FROM PSEUDOMONAS PUTIDA  
Authors : Wade, R.C.; Winn, P.J.; Schlichting, I.; Sudarko, X.  
Deposited on : 2004-03-02  
Resolution : 2.00 Å(reported)

This is a Full wwPDB X-ray Structure Validation Report for a publicly released PDB entry.

We welcome your comments at [validation@mail.wwpdb.org](mailto:validation@mail.wwpdb.org)

A user guide is available at

<http://wwpdb.org/validation/2016/XrayValidationReportHelp>

with specific help available everywhere you see the ⓘ symbol.

---

The following versions of software and data (see [references ⓘ](#)) were used in the production of this report:

MolProbity : 4.02b-467  
Mogul : 1.7.2 (RC1), CSD as538be (2017)  
Xtriage (Phenix) : 1.9-1692  
EDS : trunk28620  
Percentile statistics : 20161228.v01 (using entries in the PDB archive December 28th 2016)  
Refmac : 5.8.0135  
CCP4 : 6.5.0  
Ideal geometry (proteins) : Engh & Huber (2001)  
Ideal geometry (DNA, RNA) : Parkinson et al. (1996)  
Validation Pipeline (wwPDB-VP) : recalc28949

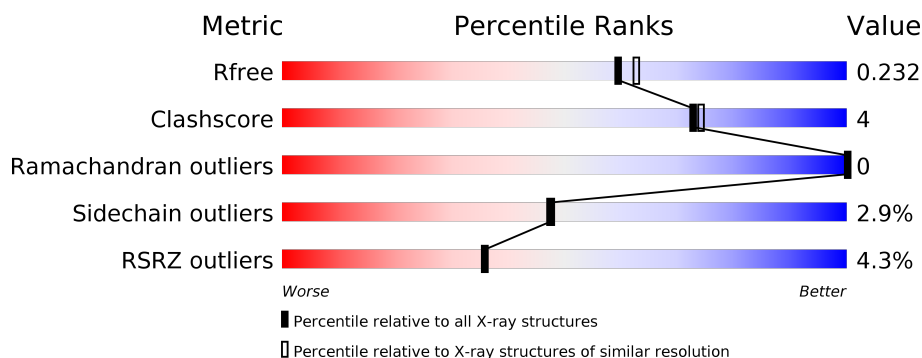
# 1 Overall quality at a glance

The following experimental techniques were used to determine the structure:

*X-RAY DIFFRACTION*

The reported resolution of this entry is 2.00 Å.

Percentile scores (ranging between 0-100) for global validation metrics of the entry are shown in the following graphic. The table shows the number of entries on which the scores are based.



Metric	Whole archive (#Entries)	Similar resolution (#Entries, resolution range(Å))
$R_{free}$	100719	6609 (2.00-2.00)
Clashscore	112137	7775 (2.00-2.00)
Ramachandran outliers	110173	7679 (2.00-2.00)
Sidechain outliers	110143	7678 (2.00-2.00)
RSRZ outliers	101464	6696 (2.00-2.00)

The table below summarises the geometric issues observed across the polymeric chains and their fit to the electron density. The red, orange, yellow and green segments on the lower bar indicate the fraction of residues that contain outliers for  $\geq 3$ , 2, 1 and 0 types of geometric quality criteria. A grey segment represents the fraction of residues that are not modelled. The numeric value for each fraction is indicated below the corresponding segment, with a dot representing fractions  $\leq 5\%$ . The upper red bar (where present) indicates the fraction of residues that have poor fit to the electron density. The numeric value is given above the bar.

Mol	Chain	Length	Quality of chain
1	A	414	<div> <div>6%</div> <div> <div></div> <div>88%</div> <div>9%</div> <div>••</div> </div> </div>
1	B	414	<div> <div>2%</div> <div> <div></div> <div>87%</div> <div>10%</div> <div>••</div> </div> </div>

The following table lists non-polymeric compounds, carbohydrate monomers and non-standard residues in protein, DNA, RNA chains that are outliers for geometric or electron-density-fit criteria:

Mol	Type	Chain	Res	Chirality	Geometry	Clashes	Electron density
3	CAM	A	1416	-	-	-	X
5	XE	A	1421	-	-	X	X
5	XE	B	1422	-	-	X	-

## 2 Entry composition [i](#)

There are 6 unique types of molecules in this entry. The entry contains 7038 atoms, of which 0 are hydrogens and 0 are deuteriums.

In the tables below, the ZeroOcc column contains the number of atoms modelled with zero occupancy, the AltConf column contains the number of residues with at least one atom in alternate conformation and the Trace column contains the number of residues modelled with at most 2 atoms.

- Molecule 1 is a protein called CYTOCHROME P450-CAM.

Mol	Chain	Residues	Atoms					ZeroOcc	AltConf	Trace
1	A	404	Total	C	N	O	S	0	6	0
			3230	2049	562	599	20			
1	B	405	Total	C	N	O	S	0	6	0
			3234	2048	563	602	21			

There are 2 discrepancies between the modelled and reference sequences:

Chain	Residue	Modelled	Actual	Comment	Reference
A	276	GLN	GLU	CONFLICT	UNP P00183
B	276	GLN	GLU	CONFLICT	UNP P00183

- Molecule 2 is PROTOPORPHYRIN IX CONTAINING FE (three-letter code: HEM) (formula:  $C_{34}H_{32}FeN_4O_4$ ).



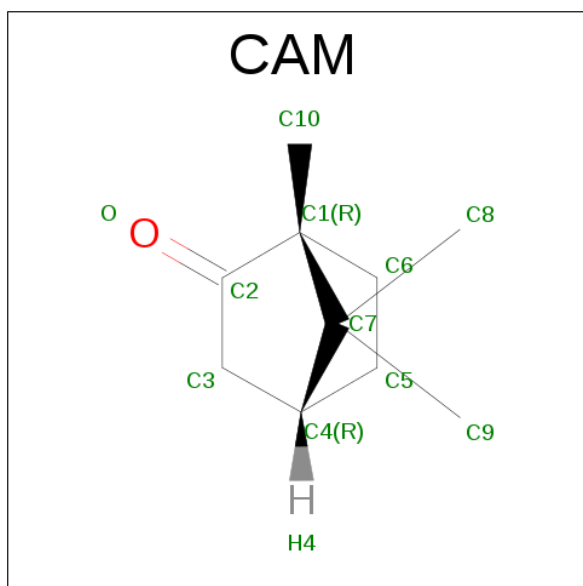
Mol	Chain	Residues	Atoms					ZeroOcc	AltConf
2	A	1	Total	C	Fe	N	O	0	0
			43	34	1	4	4		

*Continued on next page...*

Continued from previous page...

Mol	Chain	Residues	Atoms					ZeroOcc	AltConf
2	B	1	Total	C	Fe	N	O	0	0
			43	34	1	4	4		

- Molecule 3 is CAMPHOR (three-letter code: CAM) (formula:  $C_{10}H_{16}O$ ).



Mol	Chain	Residues	Atoms			ZeroOcc	AltConf
3	A	1	Total	C	O	0	0
			11	10	1		
3	B	1	Total	C	O	0	0
			11	10	1		

- Molecule 4 is POTASSIUM ION (three-letter code: K) (formula: K).

Mol	Chain	Residues	Atoms		ZeroOcc	AltConf
4	B	2	Total	K	0	0
			2	2		
4	A	1	Total	K	0	0
			1	1		

- Molecule 5 is XENON (three-letter code: XE) (formula: Xe).

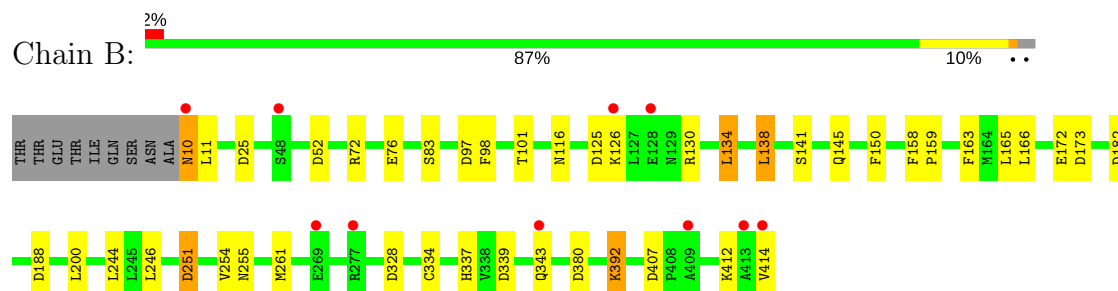
Mol	Chain	Residues	Atoms		ZeroOcc	AltConf
5	B	4	Total	Xe	0	2
			6	6		
5	A	4	Total	Xe	0	1
			5	5		

- Molecule 6 is water.

Mol	Chain	Residues	Atoms		ZeroOcc	AltConf
6	A	193	Total 193	O 193	0	0
6	B	259	Total 259	O 259	0	0



- Molecule 1: CYTOCHROME P450-CAM



## 4 Data and refinement statistics

Property	Value	Source
Space group	P 1 21 1	Depositor
Cell constants a, b, c, $\alpha$ , $\beta$ , $\gamma$	67.20Å 62.30Å 95.30Å 90.00° 90.50° 90.00°	Depositor
Resolution (Å)	19.84 – 2.00 19.84 – 2.00	Depositor EDS
% Data completeness (in resolution range)	100.0 (19.84-2.00) 99.8 (19.84-2.00)	Depositor EDS
$R_{merge}$	0.12	Depositor
$R_{sym}$	(Not available)	Depositor
$\langle I/\sigma(I) \rangle$ <sup>1</sup>	3.84 (at 2.01Å)	Xtriage
Refinement program	REFMAC 5.1.19	Depositor
R, $R_{free}$	0.187 , 0.236 0.189 , 0.232	Depositor DCC
$R_{free}$ test set	2663 reflections (5.26%)	DCC
Wilson B-factor (Å <sup>2</sup> )	26.7	Xtriage
Anisotropy	0.094	Xtriage
Bulk solvent $k_{sol}$ (e/Å <sup>3</sup> ), $B_{sol}$ (Å <sup>2</sup> )	0.40 , 47.1	EDS
L-test for twinning <sup>2</sup>	$\langle  L  \rangle = 0.49$ , $\langle L^2 \rangle = 0.32$	Xtriage
Estimated twinning fraction	0.024 for h,-k,-l	Xtriage
$F_o, F_c$ correlation	0.95	EDS
Total number of atoms	7038	wwPDB-VP
Average B, all atoms (Å <sup>2</sup> )	35.0	wwPDB-VP

Xtriage's analysis on translational NCS is as follows: *The largest off-origin peak in the Patterson function is 6.75% of the height of the origin peak. No significant pseudotranslation is detected.*

<sup>1</sup>Intensities estimated from amplitudes.

<sup>2</sup>Theoretical values of  $\langle |L| \rangle$ ,  $\langle L^2 \rangle$  for acentric reflections are 0.5, 0.333 respectively for untwinned datasets, and 0.375, 0.2 for perfectly twinned datasets.



## 5 Model quality

### 5.1 Standard geometry

Bond lengths and bond angles in the following residue types are not validated in this section: HEM, K, CAM, XE

The Z score for a bond length (or angle) is the number of standard deviations the observed value is removed from the expected value. A bond length (or angle) with  $|Z| > 5$  is considered an outlier worth inspection. RMSZ is the root-mean-square of all Z scores of the bond lengths (or angles).

Mol	Chain	Bond lengths		Bond angles	
		RMSZ	# Z  >5	RMSZ	# Z  >5
1	A	0.48	0/3328	0.75	10/4522 (0.2%)
1	B	0.53	0/3331	0.77	12/4526 (0.3%)
All	All	0.51	0/6659	0.76	22/9048 (0.2%)

There are no bond length outliers.

All (22) bond angle outliers are listed below:

Mol	Chain	Res	Type	Atoms	Z	Observed(°)	Ideal(°)
1	B	188	ASP	CB-CG-OD2	8.34	125.81	118.30
1	A	97	ASP	CB-CG-OD2	7.58	125.13	118.30
1	B	52	ASP	CB-CG-OD2	7.51	125.06	118.30
1	B	25	ASP	CB-CG-OD2	6.41	124.07	118.30
1	B	97	ASP	CB-CG-OD2	6.30	123.97	118.30
1	A	77	ASP	CB-CG-OD2	6.22	123.90	118.30
1	B	407	ASP	CB-CG-OD2	6.17	123.86	118.30
1	A	328	ASP	CB-CG-OD2	6.09	123.78	118.30
1	B	380	ASP	CB-CG-OD2	6.00	123.70	118.30
1	A	125	ASP	CB-CG-OD2	5.88	123.59	118.30
1	B	339	ASP	CB-CG-OD2	5.79	123.51	118.30
1	B	328	ASP	CB-CG-OD2	5.64	123.38	118.30
1	B	251[A]	ASP	CB-CG-OD2	5.64	123.38	118.30
1	B	251[B]	ASP	CB-CG-OD2	5.64	123.38	118.30
1	A	27	ASP	CB-CG-OD2	5.60	123.34	118.30
1	A	304	ASP	CB-CG-OD2	5.53	123.28	118.30
1	A	407	ASP	CB-CG-OD2	5.49	123.24	118.30
1	A	380	ASP	CB-CG-OD2	5.47	123.22	118.30
1	B	173	ASP	CB-CG-OD2	5.45	123.20	118.30
1	A	236	ASP	CB-CG-OD2	5.43	123.19	118.30
1	B	125	ASP	CB-CG-OD2	5.39	123.15	118.30
1	A	339	ASP	CB-CG-OD2	5.22	123.00	118.30

There are no chirality outliers.

There are no planarity outliers.

## 5.2 Too-close contacts

In the following table, the Non-H and H(model) columns list the number of non-hydrogen atoms and hydrogen atoms in the chain respectively. The H(added) column lists the number of hydrogen atoms added and optimized by MolProbity. The Clashes column lists the number of clashes within the asymmetric unit, whereas Symm-Clashes lists symmetry related clashes.

Mol	Chain	Non-H	H(model)	H(added)	Clashes	Symm-Clashes
1	A	3230	0	3177	19	0
1	B	3234	0	3179	27	0
2	A	43	0	30	3	0
2	B	43	0	30	4	0
3	A	11	0	16	0	0
3	B	11	0	16	1	0
4	A	1	0	0	0	0
4	B	2	0	0	0	0
5	A	5	0	0	6	0
5	B	6	0	0	4	0
6	A	193	0	0	1	1
6	B	259	0	0	9	1
All	All	7038	0	6448	51	2

The all-atom clashscore is defined as the number of clashes found per 1000 atoms (including hydrogen atoms). The all-atom clashscore for this structure is 4.

All (51) close contacts within the same asymmetric unit are listed below, sorted by their clash magnitude.

Atom-1	Atom-2	Interatomic distance (Å)	Clash overlap (Å)
1:A:163[B]:PHE:CZ	5:A:1421:XE:XE	2.56	1.36
1:A:163[B]:PHE:CE1	5:A:1421:XE:XE	2.78	1.14
1:A:163[B]:PHE:HZ	5:A:1421:XE:XE	2.35	0.84
1:A:163[A]:PHE:CE1	5:A:1421:XE:XE	3.24	0.68
1:B:182:ASP:OD2	6:B:2138:HOH:O	2.11	0.67
1:A:182:ASP:OD2	6:A:2092:HOH:O	2.14	0.65
1:A:251[A]:ASP:O	1:A:255:ASN:ND2	2.30	0.63
1:A:200:LEU:HD21	1:A:246:LEU:HD13	1.82	0.62
2:A:1415:HEM:HMB1	2:A:1415:HEM:HBB2	1.80	0.62
1:A:163[A]:PHE:HE1	5:A:1421:XE:XE	2.60	0.61
1:A:150:PHE:CZ	1:A:261:MET:HG3	2.36	0.61

*Continued on next page...*

*Continued from previous page...*

Atom-1	Atom-2	Interatomic distance (Å)	Clash overlap (Å)
1:B:141:SER:O	1:B:145:GLN:NE2	2.36	0.58
1:B:251[B]:ASP:O	1:B:255:ASN:ND2	2.36	0.58
1:A:276:GLN:HE21	1:B:172:GLU:H	1.50	0.58
2:B:1415:HEM:HMB2	2:B:1415:HEM:HBB2	1.84	0.58
1:B:163:PHE:CE1	5:B:1422:XE:XE	3.35	0.58
1:B:76:GLU:OE1	6:B:2069:HOH:O	2.17	0.57
1:A:158:PHE:HB3	1:A:159:PRO:HD3	1.86	0.57
1:B:200:LEU:HD11	1:B:246:LEU:HD13	1.85	0.56
1:B:244:LEU:CD1	2:B:1415:HEM:HMD2	2.35	0.55
1:B:166:LEU:HD23	5:B:1422:XE:XE	2.84	0.55
1:B:392:LYS:HD3	6:B:2247:HOH:O	2.07	0.55
1:B:134:LEU:HD22	1:B:138:LEU:HD22	1.89	0.54
1:B:150:PHE:CZ	1:B:261:MET:HG3	2.43	0.53
1:B:130:ARG:HD2	1:B:165:LEU:HD21	1.89	0.52
5:A:1418[A]:XE:XE	5:A:1421:XE:XE	3.84	0.52
1:B:116:ASN:HB3	6:B:2103:HOH:O	2.11	0.51
1:B:412:LYS:HG3	1:B:414:VAL:HG23	1.92	0.50
1:B:158:PHE:HB3	1:B:159:PRO:HD3	1.94	0.49
1:A:276:GLN:HE21	1:B:172:GLU:N	2.09	0.49
1:B:72:ARG:HG3	6:B:2215:HOH:O	2.12	0.49
1:B:392:LYS:CD	6:B:2247:HOH:O	2.61	0.49
1:A:62:HIS:CE1	1:A:88:ILE:HG21	2.48	0.48
2:B:1415:HEM:HBB2	2:B:1415:HEM:CMB	2.43	0.48
1:B:83:SER:HB3	1:B:101:THR:O	2.13	0.48
2:A:1415:HEM:HBC2	2:A:1415:HEM:HHD	1.96	0.47
1:A:88:ILE:HG23	1:A:89:PRO:HA	1.96	0.47
1:B:334:CYS:HB3	1:B:337:HIS:ND1	2.29	0.47
1:A:323[A]:MET:HE3	1:A:323[A]:MET:HB3	1.29	0.47
1:A:56:THR:O	1:A:61:GLY:HA2	2.14	0.47
1:B:98:PHE:HB3	1:B:244:LEU:HB2	1.97	0.46
3:B:1416:CAM:H52	6:B:2258:HOH:O	2.15	0.46
1:B:392:LYS:NZ	6:B:2248:HOH:O	2.43	0.44
1:B:244:LEU:HD12	2:B:1415:HEM:HMD2	1.98	0.44
1:A:267:SER:OG	1:A:270:HIS:ND1	2.40	0.44
1:A:297:ASP:OD2	2:A:1415:HEM:O2A	2.35	0.43
1:B:166:LEU:CD2	5:B:1422:XE:XE	3.45	0.43
1:B:10:ASN:N	6:B:2002:HOH:O	2.53	0.42
5:B:1419[A]:XE:XE	5:B:1422:XE:XE	3.94	0.41
1:B:159:PRO:HG2	1:B:254:VAL:HG22	2.01	0.41
1:A:390:GLN:HB3	1:A:390:GLN:HE21	1.61	0.41

All (2) symmetry-related close contacts are listed below. The label for Atom-2 includes the sym-

metry operator and encoded unit-cell translations to be applied.

Atom-1	Atom-2	Interatomic distance (Å)	Clash overlap (Å)
6:B:2105:HOH:O	6:B:2146:HOH:O[2_555]	2.13	0.07
6:A:2033:HOH:O	6:A:2037:HOH:O[2_656]	2.19	0.01

## 5.3 Torsion angles [i](#)

### 5.3.1 Protein backbone [i](#)

In the following table, the Percentiles column shows the percent Ramachandran outliers of the chain as a percentile score with respect to all X-ray entries followed by that with respect to entries of similar resolution.

The Analysed column shows the number of residues for which the backbone conformation was analysed, and the total number of residues.

Mol	Chain	Analysed	Favoured	Allowed	Outliers	Percentiles	
1	A	408/414 (99%)	394 (97%)	14 (3%)	0	100	100
1	B	409/414 (99%)	401 (98%)	8 (2%)	0	100	100
All	All	817/828 (99%)	795 (97%)	22 (3%)	0	100	100

There are no Ramachandran outliers to report.

### 5.3.2 Protein sidechains [i](#)

In the following table, the Percentiles column shows the percent sidechain outliers of the chain as a percentile score with respect to all X-ray entries followed by that with respect to entries of similar resolution.

The Analysed column shows the number of residues for which the sidechain conformation was analysed, and the total number of residues.

Mol	Chain	Analysed	Rotameric	Outliers	Percentiles	
1	A	355/358 (99%)	341 (96%)	14 (4%)	37	34
1	B	356/358 (99%)	349 (98%)	7 (2%)	60	64
All	All	711/716 (99%)	690 (97%)	21 (3%)	48	46

All (21) residues with a non-rotameric sidechain are listed below:

Mol	Chain	Res	Type
1	A	79	ARG
1	A	152	GLU
1	A	200	LEU
1	A	214	LYS
1	A	241	MET
1	A	246	LEU
1	A	311	GLN
1	A	323[A]	MET
1	A	323[B]	MET
1	A	324	LEU
1	A	343	GLN
1	A	388	GLN
1	A	390	GLN
1	A	400	GLN
1	B	10	ASN
1	B	11	LEU
1	B	126	LYS
1	B	134	LEU
1	B	138	LEU
1	B	343	GLN
1	B	392	LYS

Some sidechains can be flipped to improve hydrogen bonding and reduce clashes. All (12) such sidechains are listed below:

Mol	Chain	Res	Type
1	A	30	ASN
1	A	62	HIS
1	A	272	GLN
1	A	276	GLN
1	A	317	GLN
1	A	388	GLN
1	A	390	GLN
1	B	30	ASN
1	B	33	ASN
1	B	145	GLN
1	B	210	GLN
1	B	361	HIS

### 5.3.3 RNA ⓘ

There are no RNA molecules in this entry.

## 5.4 Non-standard residues in protein, DNA, RNA chains [i](#)

There are no non-standard protein/DNA/RNA residues in this entry.

## 5.5 Carbohydrates [i](#)

There are no carbohydrates in this entry.

## 5.6 Ligand geometry [i](#)

Of 18 ligands modelled in this entry, 14 are monoatomic - leaving 4 for Mogul analysis.

In the following table, the Counts columns list the number of bonds (or angles) for which Mogul statistics could be retrieved, the number of bonds (or angles) that are observed in the model and the number of bonds (or angles) that are defined in the chemical component dictionary. The Link column lists molecule types, if any, to which the group is linked. The Z score for a bond length (or angle) is the number of standard deviations the observed value is removed from the expected value. A bond length (or angle) with  $|Z| > 2$  is considered an outlier worth inspection. RMSZ is the root-mean-square of all Z scores of the bond lengths (or angles).

Mol	Type	Chain	Res	Link	Bond lengths			Bond angles		
					Counts	RMSZ	# $ Z  > 2$	Counts	RMSZ	# $ Z  > 2$
2	HEM	A	1415	1,6	28,50,50	2.11	7 (25%)	17,82,82	1.73	6 (35%)
3	CAM	A	1416	-	12,12,12	3.19	1 (8%)	20,21,21	0.95	1 (5%)
2	HEM	B	1415	1,6	28,50,50	2.13	6 (21%)	17,82,82	1.59	5 (29%)
3	CAM	B	1416	-	12,12,12	3.01	1 (8%)	20,21,21	1.13	1 (5%)

In the following table, the Chirals column lists the number of chiral outliers, the number of chiral centers analysed, the number of these observed in the model and the number defined in the chemical component dictionary. Similar counts are reported in the Torsion and Rings columns. '-' means no outliers of that kind were identified.

Mol	Type	Chain	Res	Link	Chirals	Torsions	Rings
2	HEM	A	1415	1,6	-	0/6/54/54	0/0/8/8
3	CAM	A	1416	-	-	0/0/31/31	0/0/2/2
2	HEM	B	1415	1,6	-	0/6/54/54	0/0/8/8
3	CAM	B	1416	-	-	0/0/31/31	0/0/2/2

All (15) bond length outliers are listed below:

Mol	Chain	Res	Type	Atoms	Z	Observed(Å)	Ideal(Å)
2	B	1415	HEM	C3C-C2C	-5.12	1.33	1.40
2	A	1415	HEM	C3C-C2C	-4.74	1.34	1.40

*Continued on next page...*

*Continued from previous page...*

Mol	Chain	Res	Type	Atoms	Z	Observed(Å)	Ideal(Å)
2	A	1415	HEM	C3B-C2B	-4.19	1.34	1.40
2	B	1415	HEM	C3B-C2B	-4.17	1.34	1.40
2	B	1415	HEM	CAA-C2A	2.26	1.55	1.52
2	A	1415	HEM	CAA-C2A	2.30	1.55	1.52
2	A	1415	HEM	C3C-CAC	2.93	1.53	1.47
2	A	1415	HEM	C4D-ND	3.25	1.40	1.36
2	B	1415	HEM	C3C-CAC	3.26	1.54	1.47
2	B	1415	HEM	C3B-CAB	3.70	1.55	1.47
2	A	1415	HEM	C3B-CAB	3.71	1.55	1.47
2	A	1415	HEM	C3D-C2D	5.04	1.52	1.37
2	B	1415	HEM	C3D-C2D	5.18	1.53	1.37
3	B	1416	CAM	O-C2	10.21	1.39	1.21
3	A	1416	CAM	O-C2	10.97	1.40	1.21

All (13) bond angle outliers are listed below:

Mol	Chain	Res	Type	Atoms	Z	Observed(°)	Ideal(°)
2	A	1415	HEM	CMA-C3A-C4A	-3.38	123.27	128.46
3	B	1416	CAM	C4-C3-C2	-3.16	96.53	102.00
2	A	1415	HEM	CAD-CBD-CGD	-2.72	108.02	112.66
3	A	1416	CAM	C4-C3-C2	-2.65	97.41	102.00
2	B	1415	HEM	C1D-C2D-C3D	-2.37	105.35	107.00
2	B	1415	HEM	CAD-CBD-CGD	-2.13	109.02	112.66
2	A	1415	HEM	C3C-C4C-NC	-2.11	106.96	110.94
2	A	1415	HEM	C1D-C2D-C3D	-2.08	105.55	107.00
2	A	1415	HEM	C4A-C3A-C2A	2.04	108.41	107.00
2	B	1415	HEM	C4C-C3C-C2C	2.14	108.40	106.90
2	B	1415	HEM	CMD-C2D-C3D	2.24	129.17	124.94
2	A	1415	HEM	CMB-C2B-C3B	2.35	129.26	124.89
2	B	1415	HEM	C4A-C3A-C2A	2.38	108.65	107.00

There are no chirality outliers.

There are no torsion outliers.

There are no ring outliers.

3 monomers are involved in 8 short contacts:

Mol	Chain	Res	Type	Clashes	Symm-Clashes
2	A	1415	HEM	3	0
2	B	1415	HEM	4	0
3	B	1416	CAM	1	0

## 5.7 Other polymers [i](#)

There are no such residues in this entry.

## 5.8 Polymer linkage issues [i](#)

There are no chain breaks in this entry.



## 6 Fit of model and data

### 6.1 Protein, DNA and RNA chains

In the following table, the column labelled ‘#RSRZ > 2’ contains the number (and percentage) of RSRZ outliers, followed by percent RSRZ outliers for the chain as percentile scores relative to all X-ray entries and entries of similar resolution. The OWAB column contains the minimum, median, 95<sup>th</sup> percentile and maximum values of the occupancy-weighted average B-factor per residue. The column labelled ‘Q < 0.9’ lists the number of (and percentage) of residues with an average occupancy less than 0.9.

Mol	Chain	Analysed	<RSRZ>	#RSRZ>2	OWAB(Å <sup>2</sup> )	Q<0.9
1	A	404/414 (97%)	0.30	25 (6%) 21 21	25, 35, 53, 64	0
1	B	405/414 (97%)	0.14	10 (2%) 58 57	20, 31, 46, 65	0
All	All	809/828 (97%)	0.22	35 (4%) 36 36	20, 33, 50, 65	0

All (35) RSRZ outliers are listed below:

Mol	Chain	Res	Type	RSRZ
1	A	414	VAL	8.3
1	B	413	ALA	6.0
1	A	11	LEU	5.2
1	B	414	VAL	4.9
1	A	49	ASN	4.7
1	A	14	LEU	4.1
1	A	48	SER	3.9
1	A	64	ILE	3.8
1	B	10	ASN	3.6
1	B	409	ALA	3.5
1	A	344	LYS	3.2
1	A	413	ALA	3.2
1	A	343	GLN	3.0
1	A	318	ILE	3.0
1	A	13	PRO	3.0
1	A	388	GLN	2.9
1	A	337	HIS	2.9
1	B	277	ARG	2.9
1	A	35	SER	2.6
1	B	48	SER	2.5
1	A	24	PHE	2.4
1	A	25	ASP	2.4
1	A	12	ALA	2.4
1	B	343	GLN	2.4

*Continued on next page...*

*Continued from previous page...*

Mol	Chain	Res	Type	RSRZ
1	A	309	GLY	2.4
1	B	126	LYS	2.4
1	A	390	GLN	2.3
1	B	128	GLU	2.3
1	A	385	PRO	2.2
1	A	386	GLY	2.2
1	A	33	ASN	2.1
1	B	269	GLU	2.1
1	A	257	LEU	2.1
1	A	323[A]	MET	2.0
1	A	63	TRP	2.0

## 6.2 Non-standard residues in protein, DNA, RNA chains [i](#)

There are no non-standard protein/DNA/RNA residues in this entry.

## 6.3 Carbohydrates [i](#)

There are no carbohydrates in this entry.

## 6.4 Ligands [i](#)

In the following table, the Atoms column lists the number of modelled atoms in the group and the number defined in the chemical component dictionary. LLDF column lists the quality of electron density of the group with respect to its neighbouring residues in protein, DNA or RNA chains. The B-factors column lists the minimum, median, 95<sup>th</sup> percentile and maximum values of B factors of atoms in the group. The column labelled 'Q< 0.9' lists the number of atoms with occupancy less than 0.9.

Mol	Type	Chain	Res	Atoms	RSCC	RSR	LLDF	B-factors(Å <sup>2</sup> )	Q<0.9
5	XE	A	1421	1/1	0.81	0.27	4.56	65,65,65,65	1
3	CAM	A	1416	11/11	0.89	0.18	3.43	36,37,37,38	0
5	XE	A	1420	1/1	0.98	0.14	1.25	31,31,31,31	1
3	CAM	B	1416	11/11	0.89	0.15	0.43	27,28,29,29	0
2	HEM	B	1415	43/43	0.98	0.11	-0.31	21,24,27,31	0
2	HEM	A	1415	43/43	0.97	0.11	-0.38	23,26,29,33	0
5	XE	B	1421	1/1	0.96	0.14	-0.57	39,39,39,39	1
4	K	B	1418	1/1	0.99	0.08	-1.17	31,31,31,31	0
5	XE	A	1419	1/1	0.96	0.11	-1.31	36,36,36,36	1
4	K	A	1417	1/1	0.99	0.04	-1.51	32,32,32,32	0

*Continued on next page...*

*Continued from previous page...*

Mol	Type	Chain	Res	Atoms	RSCC	RSR	LLDF	B-factors( $\text{\AA}^2$ )	Q<0.9
4	K	B	1417	1/1	1.00	0.04	-2.20	23,23,23,23	0
5	XE	B	1419[A]	1/1	0.96	0.07	-2.60	26,26,26,26	1
5	XE	B	1419[B]	1/1	0.96	0.07	-2.61	39,39,39,39	1
5	XE	B	1422	1/1	0.97	0.08	-2.98	61,61,61,61	1
5	XE	A	1418[A]	1/1	0.99	0.04	-3.83	29,29,29,29	1
5	XE	A	1418[B]	1/1	0.99	0.04	-4.41	35,35,35,35	1
5	XE	B	1420[B]	1/1	1.00	0.06	-5.05	34,34,34,34	1
5	XE	B	1420[A]	1/1	1.00	0.06	-6.24	37,37,37,37	1

## 6.5 Other polymers [i](#)

There are no such residues in this entry.