



Full wwPDB X-ray Structure Validation Report ⓘ

Feb 13, 2017 – 02:41 am GMT

PDB ID : 2UZV
Title : PKA STRUCTURES OF INDAZOLE-PYRIDINE SERIES OF AKT INHIBITORS
Authors : Zhu, G.D.; Gandhi, V.B.; Gong, J.; Thomas, S.; Woods, K.W.; Song, X.; Li, T.; Diebold, R.B.; Luo, Y.; Liu, X.; Guan, R.; Klinghofer, V.; Johnson, E.F.; Bouska, J.; Olson, A.; Marsh, K.C.; Stoll, V.S.; Mamo, M.; Polakowski, J.; Campbell, T.J.; Penning, T.D.; Li, Q.; Rosenberg, S.H.; Giranda, V.L.
Deposited on : 2007-05-01
Resolution : 2.50 Å(reported)

This is a Full wwPDB X-ray Structure Validation Report for a publicly released PDB entry.

We welcome your comments at validation@mail.wwpdb.org

A user guide is available at

<http://wwpdb.org/validation/2016/XrayValidationReportHelp>

with specific help available everywhere you see the ⓘ symbol.

The following versions of software and data (see [references ⓘ](#)) were used in the production of this report:

MolProbity	:	4.02b-467
Mogul	:	1.7.2 (RC1), CSD as538be (2017)
Xtriage (Phenix)	:	NOT EXECUTED
EDS	:	NOT EXECUTED
Percentile statistics	:	20161228.v01 (using entries in the PDB archive December 28th 2016)
Ideal geometry (proteins)	:	Engh & Huber (2001)
Ideal geometry (DNA, RNA)	:	Parkinson et al. (1996)
Validation Pipeline (wwPDB-VP)	:	recalc28949

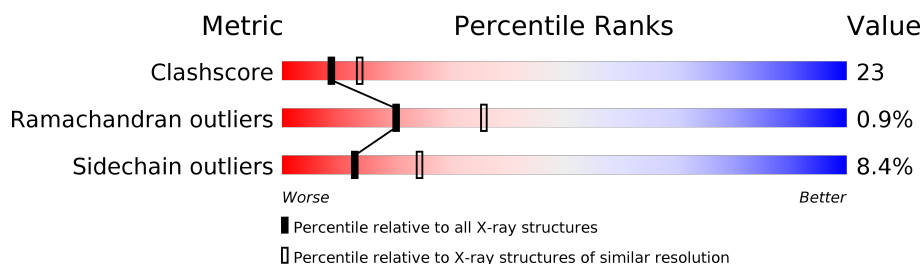
1 Overall quality at a glance

The following experimental techniques were used to determine the structure:

X-RAY DIFFRACTION

The reported resolution of this entry is 2.50 Å.

Percentile scores (ranging between 0-100) for global validation metrics of the entry are shown in the following graphic. The table shows the number of entries on which the scores are based.



Metric	Whole archive (#Entries)	Similar resolution (#Entries, resolution range(Å))
Clashscore	112137	4554 (2.50-2.50)
Ramachandran outliers	110173	4463 (2.50-2.50)
Sidechain outliers	110143	4465 (2.50-2.50)

The table below summarises the geometric issues observed across the polymeric chains and their fit to the electron density. The red, orange, yellow and green segments on the lower bar indicate the fraction of residues that contain outliers for ≥ 3 , 2, 1 and 0 types of geometric quality criteria. A grey segment represents the fraction of residues that are not modelled. The numeric value for each fraction is indicated below the corresponding segment, with a dot representing fractions $\leq 5\%$. The upper red bar (where present) indicates the fraction of residues that have poor fit to the electron density. The numeric value is given above the bar.

Note EDS was not executed.

Mol	Chain	Length	Quality of chain
1	2	20	
2	A	336	

2 Entry composition

There are 3 unique types of molecules in this entry. The entry contains 2959 atoms, of which 0 are hydrogens and 0 are deuteriums.

In the tables below, the ZeroOcc column contains the number of atoms modelled with zero occupancy, the AltConf column contains the number of residues with at least one atom in alternate conformation and the Trace column contains the number of residues modelled with at most 2 atoms.

- Molecule 1 is a protein called CAMP-DEPENDENT PROTEIN KINASE INHIBITOR ALPHA,.

Mol	Chain	Residues	Atoms				ZeroOcc	AltConf	Trace
1	2	20	Total	C	N	O	0	0	0
			156	94	32	30			

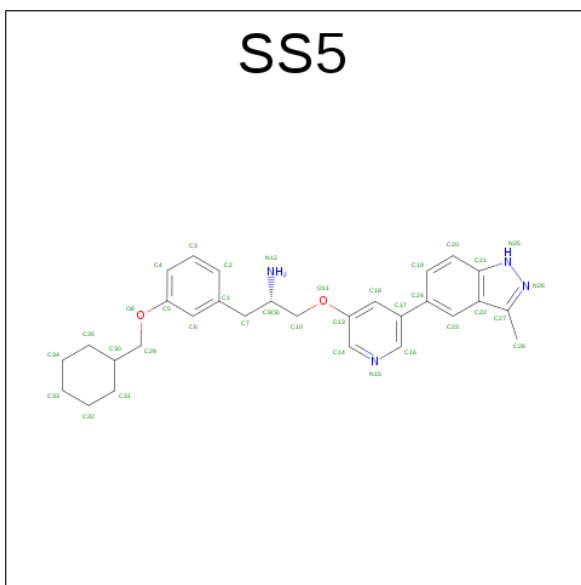
- Molecule 2 is a protein called CAMP-DEPENDENT PROTEIN KINASE, ALPHA-CATALYTIC SUBUNIT.

Mol	Chain	Residues	Atoms					ZeroOcc	AltConf	Trace
2	A	336	Total	C	N	O	S	0	0	0
			2768	1801	465	493	9			

There is a discrepancy between the modelled and reference sequences:

Chain	Residue	Modelled	Actual	Comment	Reference
A	286	ASP	ASN	CONFLICT	UNP P00517

- Molecule 3 is (2S)-1-[3-(CYCLOHEXYLMETHOXY)PHENYL]-3-{[5-(3-METHYL-1H-INDAZOL-5-YL)PYRIDIN-3-YL]OXY}PROPAN-2-AMINE (three-letter code: SS5) (formula: C₂₉H₃₄N₄O₂).



Mol	Chain	Residues	Atoms				ZeroOcc	AltConf
3	A	1	Total	C	N	O	0	0
			35	29	4	2		

3 Residue-property plots

These plots are drawn for all protein, RNA and DNA chains in the entry. The first graphic for a chain summarises the proportions of the various outlier classes displayed in the second graphic. The second graphic shows the sequence view annotated by issues in geometry and electron density. Residues are color-coded according to the number of geometric quality criteria for which they contain at least one outlier: green = 0, yellow = 1, orange = 2 and red = 3 or more. A red dot above a residue indicates a poor fit to the electron density ($RSRZ > 2$). Stretches of 2 or more consecutive residues without any outlier are shown as a green connector. Residues present in the sample, but not in the model, are shown in grey.

Note EDS was not executed.

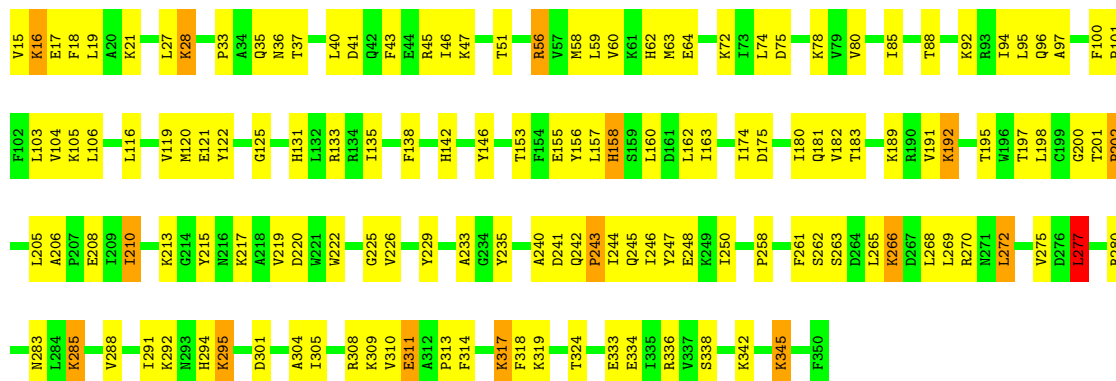
- Molecule 1: CAMP-DEPENDENT PROTEIN KINASE INHIBITOR ALPHA,

Chain 2: 



- Molecule 2: CAMP-DEPENDENT PROTEIN KINASE, ALPHA-CATALYTIC SUBUNIT

Chain A: 



4 Data and refinement statistics

Xtriage (Phenix) and EDS were not executed - this section is therefore incomplete.

Property	Value	Source
Space group	P 21 21 21	Depositor
Cell constants a, b, c, α , β , γ	72.75Å 74.75Å 80.05Å 90.00° 90.00° 90.00°	Depositor
Resolution (Å)	19.85 – 2.50	Depositor
% Data completeness (in resolution range)	90.9 (19.85-2.50)	Depositor
R_{merge}	0.10	Depositor
R_{sym}	(Not available)	Depositor
Refinement program	CNS 1.0	Depositor
R, R_{free}	0.251 , 0.316	Depositor
Estimated twinning fraction	No twinning to report.	Xtriage
Total number of atoms	2959	wwPDB-VP
Average B, all atoms (Å ²)	24.0	wwPDB-VP

5 Model quality [i](#)

5.1 Standard geometry [i](#)

Bond lengths and bond angles in the following residue types are not validated in this section: SS5

The Z score for a bond length (or angle) is the number of standard deviations the observed value is removed from the expected value. A bond length (or angle) with $|Z| > 5$ is considered an outlier worth inspection. RMSZ is the root-mean-square of all Z scores of the bond lengths (or angles).

Mol	Chain	Bond lengths		Bond angles	
		RMSZ	$\# Z > 5$	RMSZ	$\# Z > 5$
1	2	9.14	1/158 (0.6%)	0.59	0/211
2	A	0.40	0/2840	0.65	1/3830 (0.0%)
All	All	2.14	1/2998 (0.0%)	0.64	1/4041 (0.0%)

All (1) bond length outliers are listed below:

Mol	Chain	Res	Type	Atoms	Z	Observed(Å)	Ideal(Å)
1	2	24	ASP	C-OXT	114.80	3.41	1.23

All (1) bond angle outliers are listed below:

Mol	Chain	Res	Type	Atoms	Z	Observed(°)	Ideal(°)
2	A	192	LYS	N-CA-C	-5.17	97.03	111.00

There are no chirality outliers.

There are no planarity outliers.

5.2 Too-close contacts [i](#)

In the following table, the Non-H and H(model) columns list the number of non-hydrogen atoms and hydrogen atoms in the chain respectively. The H(added) column lists the number of hydrogen atoms added and optimized by MolProbity. The Clashes column lists the number of clashes within the asymmetric unit, whereas Symm-Clashes lists symmetry related clashes.

Mol	Chain	Non-H	H(model)	H(added)	Clashes	Symm-Clashes
1	2	156	0	146	10	0
2	A	2768	0	2755	131	0
3	A	35	0	34	1	0
All	All	2959	0	2935	134	0

The all-atom clashscore is defined as the number of clashes found per 1000 atoms (including hydrogen atoms). The all-atom clashscore for this structure is 23.

All (134) close contacts within the same asymmetric unit are listed below, sorted by their clash magnitude.

Atom-1	Atom-2	Interatomic distance (Å)	Clash overlap (Å)
2:A:305:ILE:HD12	2:A:310:VAL:HG21	1.37	1.03
2:A:45:ARG:HH12	2:A:334:GLU:HA	1.22	1.00
2:A:317:LYS:HE3	2:A:317:LYS:HA	1.46	0.96
2:A:163:ILE:HG12	2:A:217:LYS:HD3	1.46	0.94
2:A:28:LYS:HA	2:A:28:LYS:HE3	1.50	0.93
2:A:345:LYS:H	2:A:345:LYS:HD2	1.33	0.92
2:A:16:LYS:HA	2:A:16:LYS:HE3	1.51	0.89
2:A:277:LEU:HD13	2:A:277:LEU:H	1.39	0.88
1:2:10:PHE:HZ	2:A:133:ARG:HH12	1.24	0.85
2:A:189:LYS:HG2	2:A:191:VAL:HG22	1.68	0.74
2:A:96:GLN:N	2:A:106:LEU:HD23	2.05	0.72
2:A:295:LYS:H	2:A:295:LYS:HD3	1.56	0.71
2:A:304:ALA:HA	2:A:309:LYS:HE2	1.72	0.71
2:A:104:VAL:HG11	2:A:183:THR:HG22	1.74	0.69
2:A:285:LYS:HB3	2:A:285:LYS:NZ	2.08	0.69
2:A:125:GLY:HA3	2:A:174:ILE:O	1.93	0.69
1:2:24:ASP:OXT	1:2:24:ASP:HB2	1.94	0.67
2:A:56:ARG:NH2	2:A:333:GLU:H	1.93	0.67
2:A:106:LEU:HA	2:A:120:MET:HG2	1.77	0.66
2:A:317:LYS:HE3	2:A:317:LYS:CA	2.24	0.66
1:2:22:ILE:HG13	1:2:22:ILE:O	1.95	0.66
2:A:317:LYS:CE	2:A:318:PHE:H	2.08	0.65
2:A:45:ARG:NH1	2:A:334:GLU:HA	2.05	0.65
2:A:51:THR:HG23	3:A:1351:SS5:H351	1.79	0.65
2:A:18:PHE:HD2	2:A:19:LEU:HD12	1.62	0.64
2:A:317:LYS:HE3	2:A:318:PHE:H	1.63	0.63
2:A:155:GLU:OE2	2:A:288:VAL:HG11	1.97	0.63
2:A:242:GLN:HG2	2:A:245:GLN:OE1	2.00	0.61
2:A:317:LYS:HG2	2:A:319:LYS:NZ	2.16	0.60
2:A:305:ILE:CD1	2:A:310:VAL:HG21	2.23	0.60
2:A:205:LEU:HD12	2:A:247:TYR:CE1	2.37	0.59
2:A:189:LYS:HG2	2:A:191:VAL:CG2	2.31	0.59
2:A:295:LYS:H	2:A:295:LYS:CD	2.16	0.58
2:A:160:LEU:HB2	2:A:162:LEU:HD23	1.86	0.56
2:A:43:PHE:HB3	2:A:60:VAL:CG2	2.35	0.56
2:A:100:PHE:CD1	2:A:101:PRO:HD2	2.41	0.56
2:A:103:LEU:HD21	2:A:153:THR:CG2	2.35	0.56

Continued on next page...

Continued from previous page...

Atom-1	Atom-2	Interatomic distance (Å)	Clash overlap (Å)
2:A:94:ILE:HD13	2:A:162:LEU:HD12	1.88	0.56
2:A:275:VAL:O	2:A:277:LEU:HD13	2.08	0.54
2:A:100:PHE:CG	2:A:101:PRO:HD2	2.42	0.54
2:A:265:LEU:O	2:A:269:LEU:HD13	2.07	0.54
1:2:10:PHE:CZ	2:A:133:ARG:NH1	2.73	0.54
2:A:104:VAL:HG22	2:A:182:VAL:O	2.07	0.53
2:A:317:LYS:HG2	2:A:319:LYS:HZ2	1.73	0.53
2:A:105:LYS:HE2	2:A:121:GLU:CD	2.29	0.53
2:A:45:ARG:HG3	2:A:58:MET:HE1	1.90	0.53
2:A:205:LEU:HD12	2:A:247:TYR:HE1	1.73	0.52
2:A:268:LEU:HB2	2:A:294:HIS:CE1	2.44	0.52
2:A:246:ILE:O	2:A:250:ILE:HG13	2.09	0.52
2:A:96:GLN:NE2	2:A:97:ALA:HB2	2.24	0.52
2:A:206:ALA:O	2:A:210:ILE:HG22	2.09	0.52
2:A:242:GLN:HG3	2:A:245:GLN:HG3	1.90	0.52
2:A:317:LYS:HE2	2:A:318:PHE:H	1.75	0.52
2:A:146:TYR:CD1	2:A:180:ILE:HG12	2.45	0.52
2:A:244:ILE:HG13	2:A:245:GLN:N	2.24	0.52
2:A:244:ILE:O	2:A:248:GLU:HG3	2.10	0.52
2:A:105:LYS:O	2:A:120:MET:HB3	2.09	0.52
2:A:244:ILE:HG13	2:A:245:GLN:H	1.75	0.52
2:A:295:LYS:N	2:A:295:LYS:HD3	2.21	0.52
2:A:95:LEU:HB3	2:A:106:LEU:HB2	1.92	0.51
2:A:158:HIS:HE1	2:A:220:ASP:OD2	1.93	0.51
2:A:72:LYS:HE2	2:A:74:LEU:HD11	1.93	0.51
2:A:15:VAL:O	2:A:19:LEU:HD13	2.12	0.50
2:A:158:HIS:NE2	2:A:217:LYS:HB3	2.27	0.50
2:A:105:LYS:HE2	2:A:121:GLU:OE2	2.11	0.50
2:A:96:GLN:CA	2:A:106:LEU:HD23	2.42	0.50
2:A:222:TRP:O	2:A:226:VAL:HG23	2.12	0.50
2:A:263:SER:HA	2:A:266:LYS:CD	2.41	0.50
2:A:242:GLN:OE1	2:A:244:ILE:HD11	2.12	0.49
1:2:15:ARG:HH21	2:A:243:PRO:HD3	1.76	0.49
2:A:142:HIS:CD2	2:A:146:TYR:CE2	3.01	0.48
2:A:174:ILE:HD13	2:A:180:ILE:HD13	1.94	0.48
2:A:285:LYS:HB3	2:A:285:LYS:HZ2	1.75	0.48
2:A:46:ILE:O	2:A:47:LYS:HB2	2.12	0.48
2:A:288:VAL:HG22	2:A:292:LYS:HD2	1.96	0.48
2:A:233:ALA:HB2	2:A:261:PHE:CZ	2.48	0.48
2:A:336:ARG:HH11	2:A:336:ARG:HG2	1.78	0.48
2:A:28:LYS:HA	2:A:28:LYS:CE	2.33	0.48

Continued on next page...

Continued from previous page...

Atom-1	Atom-2	Interatomic distance (Å)	Clash overlap (Å)
1:2:15:ARG:HG3	2:A:240:ALA:O	2.13	0.47
2:A:201:THR:HG22	2:A:202:PRO:HD2	1.97	0.47
2:A:119:VAL:C	2:A:120:MET:HG3	2.34	0.47
2:A:103:LEU:HD11	2:A:157:LEU:HD21	1.96	0.47
2:A:258:PRO:HD2	2:A:261:PHE:CD2	2.50	0.46
2:A:294:HIS:CE1	2:A:295:LYS:HE3	2.50	0.46
2:A:100:PHE:HB3	2:A:103:LEU:HG	1.96	0.46
2:A:285:LYS:HZ3	2:A:285:LYS:HB3	1.79	0.46
2:A:62:HIS:CD2	2:A:64:GLU:HG2	2.51	0.46
2:A:301:ASP:O	2:A:304:ALA:HB3	2.16	0.46
2:A:131:HIS:O	2:A:135:ILE:HG13	2.15	0.46
2:A:17:GLU:O	2:A:21:LYS:HG3	2.16	0.46
2:A:43:PHE:HB3	2:A:60:VAL:HG22	1.96	0.46
2:A:16:LYS:CA	2:A:16:LYS:HE3	2.36	0.45
2:A:263:SER:HA	2:A:266:LYS:HD2	1.98	0.45
2:A:156:TYR:O	2:A:160:LEU:HD13	2.16	0.45
2:A:142:HIS:CD2	2:A:313:PRO:HG3	2.52	0.45
2:A:88:THR:HG21	2:A:116:LEU:CD1	2.47	0.45
1:2:13:SER:HB2	2:A:241:ASP:OD1	2.16	0.45
2:A:225:GLY:HA2	2:A:272:LEU:HD23	1.97	0.45
2:A:43:PHE:HB3	2:A:60:VAL:HG21	1.98	0.45
2:A:311:GLU:H	2:A:311:GLU:CD	2.18	0.45
2:A:215:TYR:CD2	2:A:219:VAL:HG11	2.52	0.45
2:A:122:TYR:OH	2:A:324:THR:HG22	2.17	0.44
2:A:180:ILE:CG2	2:A:181:GLN:N	2.79	0.44
2:A:33:PRO:HA	2:A:96:GLN:OE1	2.17	0.44
2:A:277:LEU:O	2:A:283:ASN:ND2	2.46	0.44
1:2:6:THR:HG21	2:A:235:TYR:CE2	2.53	0.44
2:A:317:LYS:HE3	2:A:318:PHE:N	2.30	0.44
2:A:213:LYS:O	2:A:213:LYS:HG3	2.16	0.44
2:A:16:LYS:HA	2:A:16:LYS:CE	2.36	0.44
2:A:142:HIS:NE2	2:A:146:TYR:CE2	2.85	0.43
2:A:175:ASP:C	2:A:175:ASP:OD1	2.57	0.43
2:A:35:GLN:O	2:A:37:THR:HG23	2.18	0.43
1:2:7:TYR:O	1:2:11:ILE:HG12	2.18	0.43
2:A:18:PHE:HD2	2:A:19:LEU:CD1	2.28	0.43
2:A:72:LYS:HG2	2:A:74:LEU:CD1	2.49	0.43
2:A:158:HIS:ND1	2:A:217:LYS:HD2	2.34	0.43
2:A:94:ILE:CD1	2:A:162:LEU:HD12	2.49	0.42
2:A:266:LYS:O	2:A:270:ARG:HG3	2.19	0.42
2:A:305:ILE:HD12	2:A:310:VAL:CG2	2.27	0.42

Continued on next page...

Continued from previous page...

Atom-1	Atom-2	Interatomic distance (Å)	Clash overlap (Å)
2:A:263:SER:HA	2:A:266:LYS:HD3	2.00	0.42
2:A:244:ILE:HG13	2:A:245:GLN:HG3	2.00	0.42
2:A:192:LYS:HE3	2:A:192:LYS:HB2	1.90	0.41
2:A:138:PHE:HB3	2:A:142:HIS:HB3	2.02	0.41
2:A:208:GLU:CD	2:A:280:ARG:HH22	2.23	0.41
2:A:342:LYS:HD3	2:A:342:LYS:HA	1.88	0.41
2:A:80:VAL:HG22	2:A:85:ILE:HD11	2.03	0.41
2:A:243:PRO:HB3	2:A:247:TYR:CZ	2.56	0.41
2:A:288:VAL:O	2:A:291:ILE:HB	2.21	0.41
2:A:181:GLN:NE2	2:A:308:ARG:NH2	2.69	0.41
2:A:75:ASP:HB3	2:A:78:LYS:HB2	2.03	0.41
2:A:262:SER:O	2:A:266:LYS:HD2	2.21	0.40
1:2:21:ALA:HB1	2:A:200:GLY:O	2.21	0.40
2:A:135:ILE:O	2:A:135:ILE:HG22	2.20	0.40
2:A:160:LEU:O	2:A:162:LEU:HD22	2.22	0.40

There are no symmetry-related clashes.

5.3 Torsion angles

5.3.1 Protein backbone

In the following table, the Percentiles column shows the percent Ramachandran outliers of the chain as a percentile score with respect to all X-ray entries followed by that with respect to entries of similar resolution.

The Analysed column shows the number of residues for which the backbone conformation was analysed, and the total number of residues.

Mol	Chain	Analysed	Favoured	Allowed	Outliers	Percentiles	
1	2	18/20 (90%)	16 (89%)	2 (11%)	0	100	100
2	A	334/336 (99%)	298 (89%)	33 (10%)	3 (1%)	20	36
All	All	352/356 (99%)	314 (89%)	35 (10%)	3 (1%)	20	36

All (3) Ramachandran outliers are listed below:

Mol	Chain	Res	Type
2	A	36	ASN
2	A	277	LEU
2	A	202	PRO

5.3.2 Protein sidechains ⓘ

In the following table, the Percentiles column shows the percent sidechain outliers of the chain as a percentile score with respect to all X-ray entries followed by that with respect to entries of similar resolution.

The Analysed column shows the number of residues for which the sidechain conformation was analysed, and the total number of residues.

Mol	Chain	Analysed	Rotameric	Outliers	Percentiles	
1	2	15/15 (100%)	15 (100%)	0	100	100
2	A	296/297 (100%)	270 (91%)	26 (9%)	12	22
All	All	311/312 (100%)	285 (92%)	26 (8%)	13	24

All (26) residues with a non-rotameric sidechain are listed below:

Mol	Chain	Res	Type
2	A	16	LYS
2	A	27	LEU
2	A	28	LYS
2	A	40	LEU
2	A	41	ASP
2	A	56	ARG
2	A	59	LEU
2	A	63	MET
2	A	92	LYS
2	A	158	HIS
2	A	195	THR
2	A	197	THR
2	A	198	LEU
2	A	210	ILE
2	A	229	TYR
2	A	243	PRO
2	A	266	LYS
2	A	272	LEU
2	A	277	LEU
2	A	285	LYS
2	A	295	LYS
2	A	311	GLU
2	A	314	PHE
2	A	317	LYS
2	A	338	SER
2	A	345	LYS

Some sidechains can be flipped to improve hydrogen bonding and reduce clashes. All (8) such sidechains are listed below:

Mol	Chain	Res	Type
1	2	20	ASN
2	A	113	ASN
2	A	158	HIS
2	A	177	GLN
2	A	181	GLN
2	A	271	ASN
2	A	293	ASN
2	A	307	GLN

5.3.3 RNA [i](#)

There are no RNA molecules in this entry.

5.4 Non-standard residues in protein, DNA, RNA chains [i](#)

There are no non-standard protein/DNA/RNA residues in this entry.

5.5 Carbohydrates [i](#)

There are no carbohydrates in this entry.

5.6 Ligand geometry [i](#)

1 ligand is modelled in this entry.

In the following table, the Counts columns list the number of bonds (or angles) for which Mogul statistics could be retrieved, the number of bonds (or angles) that are observed in the model and the number of bonds (or angles) that are defined in the chemical component dictionary. The Link column lists molecule types, if any, to which the group is linked. The Z score for a bond length (or angle) is the number of standard deviations the observed value is removed from the expected value. A bond length (or angle) with $|Z| > 2$ is considered an outlier worth inspection. RMSZ is the root-mean-square of all Z scores of the bond lengths (or angles).

Mol	Type	Chain	Res	Link	Bond lengths			Bond angles		
					Counts	RMSZ	$\# Z > 2$	Counts	RMSZ	$\# Z > 2$
3	SS5	A	1351	-	37,39,39	1.58	6 (16%)	43,53,53	1.19	5 (11%)

In the following table, the Chirals column lists the number of chiral outliers, the number of chiral centers analysed, the number of these observed in the model and the number defined in the chemical

component dictionary. Similar counts are reported in the Torsion and Rings columns. '-' means no outliers of that kind were identified.

Mol	Type	Chain	Res	Link	Chirals	Torsions	Rings
3	SS5	A	1351	-	-	0/18/26/26	0/5/5/5

All (6) bond length outliers are listed below:

Mol	Chain	Res	Type	Atoms	Z	Observed(Å)	Ideal(Å)
3	A	1351	SS5	O8-C5	2.18	1.42	1.37
3	A	1351	SS5	C3-C4	2.45	1.43	1.38
3	A	1351	SS5	C20-C19	2.66	1.42	1.36
3	A	1351	SS5	C23-C24	2.81	1.44	1.38
3	A	1351	SS5	C4-C5	2.90	1.44	1.38
3	A	1351	SS5	C14-C13	3.90	1.43	1.38

All (5) bond angle outliers are listed below:

Mol	Chain	Res	Type	Atoms	Z	Observed(°)	Ideal(°)
3	A	1351	SS5	C18-C13-C14	-2.41	116.92	119.14
3	A	1351	SS5	C17-C18-C13	2.19	122.04	119.84
3	A	1351	SS5	O8-C29-C30	2.47	113.47	107.81
3	A	1351	SS5	C5-C6-C1	2.49	122.45	119.71
3	A	1351	SS5	C20-C21-N25	3.42	135.79	130.19

There are no chirality outliers.

There are no torsion outliers.

There are no ring outliers.

1 monomer is involved in 1 short contact:

Mol	Chain	Res	Type	Clashes	Symm-Clashes
3	A	1351	SS5	1	0

5.7 Other polymers [i](#)

There are no such residues in this entry.

5.8 Polymer linkage issues [i](#)

There are no chain breaks in this entry.

6 Fit of model and data

6.1 Protein, DNA and RNA chains

EDS was not executed - this section is therefore empty.

6.2 Non-standard residues in protein, DNA, RNA chains

EDS was not executed - this section is therefore empty.

6.3 Carbohydrates

EDS was not executed - this section is therefore empty.

6.4 Ligands

EDS was not executed - this section is therefore empty.

6.5 Other polymers

EDS was not executed - this section is therefore empty.