



wwPDB X-ray Structure Validation Summary Report ⓘ

Feb 13, 2017 – 03:25 pm GMT

PDB ID : 4V0G
Title : JAK3 in complex with a covalent EGFR inhibitor
Authors : Debreczeni, J.E.; Hennessy, E.J.; Chuaquini, C.; Ashton, S.; Coclough, N.; Cross, D.A.E.; Eberlein, C.; Gingipalli, L.; Klinowska, T.C.M.; Orme, J.P.; Sha, L.; Wu, X.
Deposited on : 2014-09-16
Resolution : 3.00 Å(reported)

This is a wwPDB X-ray Structure Validation Summary Report for a publicly released PDB entry.

We welcome your comments at validation@mail.wwpdb.org

A user guide is available at

<http://wwpdb.org/validation/2016/XrayValidationReportHelp>

with specific help available everywhere you see the ⓘ symbol.

The following versions of software and data (see [references ⓘ](#)) were used in the production of this report:

MolProbity : 4.02b-467
Mogul : 1.7.2 (RC1), CSD as538be (2017)
Xtriage (Phenix) : 1.9-1692
EDS : trunk28620
Percentile statistics : 20161228.v01 (using entries in the PDB archive December 28th 2016)
Refmac : 5.8.0135
CCP4 : 6.5.0
Ideal geometry (proteins) : Engh & Huber (2001)
Ideal geometry (DNA, RNA) : Parkinson et al. (1996)
Validation Pipeline (wwPDB-VP) : recalc28949

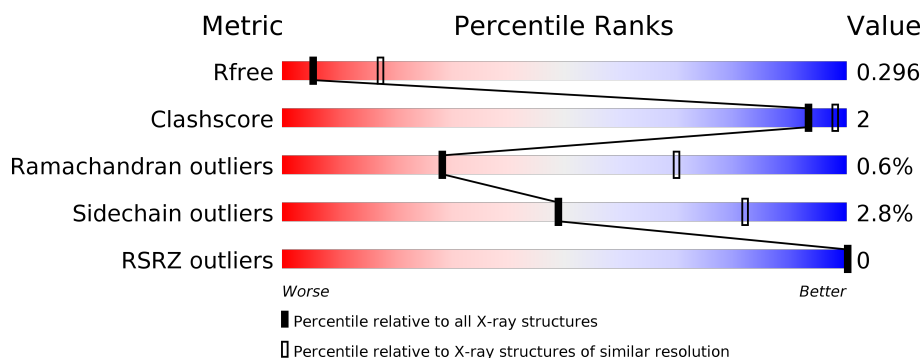
1 Overall quality at a glance ⓘ

The following experimental techniques were used to determine the structure:

X-RAY DIFFRACTION

The reported resolution of this entry is 3.00 Å.

Percentile scores (ranging between 0-100) for global validation metrics of the entry are shown in the following graphic. The table shows the number of entries on which the scores are based.



Metric	Whole archive (#Entries)	Similar resolution (#Entries, resolution range(Å))
R_{free}	100719	1692 (3.00-3.00)
Clashscore	112137	2037 (3.00-3.00)
Ramachandran outliers	110173	1973 (3.00-3.00)
Sidechain outliers	110143	1976 (3.00-3.00)
RSRZ outliers	101464	1716 (3.00-3.00)

The table below summarises the geometric issues observed across the polymeric chains and their fit to the electron density. The red, orange, yellow and green segments on the lower bar indicate the fraction of residues that contain outliers for ≥ 3 , 2, 1 and 0 types of geometric quality criteria. A grey segment represents the fraction of residues that are not modelled. The numeric value for each fraction is indicated below the corresponding segment, with a dot representing fractions $\leq 5\%$. The upper red bar (where present) indicates the fraction of residues that have poor fit to the electron density. The numeric value is given above the bar.

Mol	Chain	Length	Quality of chain
1	A	283	 89% 5% 5%
2	B	283	 88% 8% .

2 Entry composition

There are 4 unique types of molecules in this entry. The entry contains 4460 atoms, of which 0 are hydrogens and 0 are deuteriums.

In the tables below, the ZeroOcc column contains the number of atoms modelled with zero occupancy, the AltConf column contains the number of residues with at least one atom in alternate conformation and the Trace column contains the number of residues modelled with at most 2 atoms.

- Molecule 1 is a protein called TYROSINE-PROTEIN KINASE JAK3.

Mol	Chain	Residues	Atoms						ZeroOcc	AltConf	Trace
			Total	C	N	O	P	S			
1	A	269	2156	1373	374	393	2	14	113	0	0

There are 3 discrepancies between the modelled and reference sequences:

Chain	Residue	Modelled	Actual	Comment	Reference
A	895	GLU	ARG	CONFLICT	UNP P52333
A	896	PRO	GLN	CONFLICT	UNP P52333
A	1048	SER	CYS	CONFLICT	UNP P52333

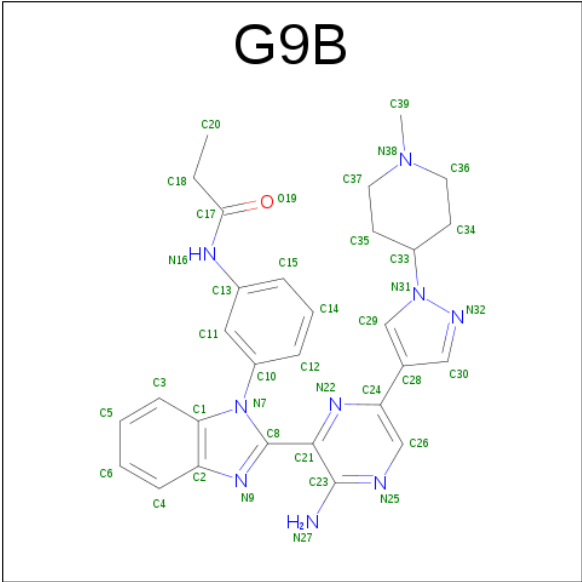
- Molecule 2 is a protein called TYROSINE-PROTEIN KINASE JAK3.

Mol	Chain	Residues	Atoms						ZeroOcc	AltConf	Trace
			Total	C	N	O	P	S			
2	B	274	2214	1405	387	406	2	14	87	1	0

There are 4 discrepancies between the modelled and reference sequences:

Chain	Residue	Modelled	Actual	Comment	Reference
B	894	GLY	ARG	CONFLICT	UNP P52333
B	895	GLU	GLN	CONFLICT	UNP P52333
B	1039	GLY	CYS	CONFLICT	UNP P52333
B	1048	SER	CYS	CONFLICT	UNP P52333

- Molecule 3 is N-[3-(2-{3-AMINO-6-[1-(1-METHYLPYRROLIDIN-4-YL)-1H-PYRAZOL-4-YL]PYRAZIN-2-YL}-1H-BENZIMIDAZOL-1-YL)PHENYL]PROPANAMIDE (three-letter code: G9B) (formula: C₂₉H₃₁N₉O).



Mol	Chain	Residues	Atoms				ZeroOcc	AltConf
3	A	1	Total	C	N	O	6	0
			39	29	9	1		
3	B	1	Total	C	N	O	6	0
			39	29	9	1		

- Molecule 4 is water.

Mol	Chain	Residues	Atoms		ZeroOcc	AltConf
4	A	6	Total	O	0	0
			6	6		
4	B	6	Total	O	0	0
			6	6		

- Molecule 1: TYROSINE-PROTEIN KINASE JAK3

ILE	FE17	Q856	H859	V884	S890	Y891	G892	PRO	GLY	GLU	PRO	S897	L910	R925	L928	P965	A966	D967	S985	PRO	GLY	GLY	SIN	GLN	P990	L1020	M1038	GLY	CYS	GLU	ARG	ASP	V1044	L1047	L1050	P1064	E1072	S1089	L1096
-----	------	------	------	------	------	------	------	-----	-----	-----	-----	------	------	------	------	------	------	------	------	-----	-----	-----	-----	-----	------	-------	-------	-----	-----	-----	-----	-----	-------	-------	-------	-------	-------	-------	-------

Chain B:  88% 8% .

L816	G849	Q856	H859	D863	L872	D873	L874	L878	G892	PRO	GLY	GLU	PRO	S897	L898	L905	L910	L914	Q915	M937	E938	A951	G984	GLU	PRO	GLY	GLN	SER	P990	V1016	L1020	K1026	M1038	F1088	S1089	P1093	M1097	L1098
------	------	------	------	------	------	------	------	------	------	-----	-----	-----	-----	------	------	------	------	------	------	------	------	------	------	-----	-----	-----	-----	-----	------	-------	-------	-------	-------	-------	-------	-------	-------	-------

4 Data and refinement statistics

Property	Value	Source
Space group	P 21 21 21	Depositor
Cell constants a, b, c, α , β , γ	57.14Å 99.03Å 111.37Å 90.00° 90.00° 90.00°	Depositor
Resolution (Å)	73.92 – 3.00 48.54 – 3.00	Depositor EDS
% Data completeness (in resolution range)	99.6 (73.92-3.00) 99.7 (48.54-3.00)	Depositor EDS
R_{merge}	0.14	Depositor
R_{sym}	(Not available)	Depositor
$\langle I/\sigma(I) \rangle$ ¹	2.14 (at 3.01Å)	Xtriage
Refinement program	REFMAC 5.2.0005	Depositor
R, R_{free}	0.252 , 0.295 0.246 , 0.296	Depositor DCC
R_{free} test set	593 reflections (4.72%)	DCC
Wilson B-factor (Å ²)	47.7	Xtriage
Anisotropy	0.635	Xtriage
Bulk solvent k_{sol} (e/Å ³), B_{sol} (Å ²)	0.31 , 43.7	EDS
L-test for twinning ²	$\langle L \rangle = 0.43$, $\langle L^2 \rangle = 0.26$	Xtriage
Estimated twinning fraction	No twinning to report.	Xtriage
F_o, F_c correlation	0.91	EDS
Total number of atoms	4460	wwPDB-VP
Average B, all atoms (Å ²)	36.0	wwPDB-VP

Xtriage's analysis on translational NCS is as follows: *The analyses of the Patterson function reveals a significant off-origin peak that is 44.26 % of the origin peak, indicating pseudo translational symmetry. The chance of finding a peak of this or larger height randomly in a structure without pseudo translational symmetry is equal to 1.5657e-04. The detected translational NCS is most likely also responsible for the elevated intensity ratio.*

¹Intensities estimated from amplitudes.

²Theoretical values of $\langle |L| \rangle$, $\langle L^2 \rangle$ for acentric reflections are 0.5, 0.333 respectively for untwinned datasets, and 0.375, 0.2 for perfectly twinned datasets.

5 Model quality [i](#)

5.1 Standard geometry [i](#)

Bond lengths and bond angles in the following residue types are not validated in this section: G9B, PTR

The Z score for a bond length (or angle) is the number of standard deviations the observed value is removed from the expected value. A bond length (or angle) with $|Z| > 5$ is considered an outlier worth inspection. RMSZ is the root-mean-square of all Z scores of the bond lengths (or angles).

Mol	Chain	Bond lengths		Bond angles	
		RMSZ	$\# Z > 5$	RMSZ	$\# Z > 5$
1	A	0.45	2/2170 (0.1%)	0.55	0/2928
2	B	0.38	0/2229	0.54	0/3006
All	All	0.42	2/4399 (0.0%)	0.55	0/5934

All (2) bond length outliers are listed below:

Mol	Chain	Res	Type	Atoms	Z	Observed(Å)	Ideal(Å)
1	A	1072	GLU	CD-OE1	-6.58	1.18	1.25
1	A	1072	GLU	CD-OE2	5.86	1.32	1.25

There are no bond angle outliers.

There are no chirality outliers.

There are no planarity outliers.

5.2 Too-close contacts [i](#)

In the following table, the Non-H and H(model) columns list the number of non-hydrogen atoms and hydrogen atoms in the chain respectively. The H(added) column lists the number of hydrogen atoms added and optimized by MolProbity. The Clashes column lists the number of clashes within the asymmetric unit, whereas Symm-Clashes lists symmetry related clashes.

Mol	Chain	Non-H	H(model)	H(added)	Clashes	Symm-Clashes
1	A	2156	0	2121	4	0
2	B	2214	0	2188	10	0
3	A	39	0	29	0	0
3	B	39	0	29	0	0
4	A	6	0	0	0	0
4	B	6	0	0	0	0
All	All	4460	0	4367	14	0

The all-atom clashscore is defined as the number of clashes found per 1000 atoms (including hydrogen atoms). The all-atom clashscore for this structure is 2.

The worst 5 of 14 close contacts within the same asymmetric unit are listed below, sorted by their clash magnitude.

Atom-1	Atom-2	Interatomic distance (Å)	Clash overlap (Å)
2:B:910:LEU:HD21	2:B:1020:LEU:HD21	1.91	0.52
2:B:951:ALA:HA	2:B:1016:VAL:HG12	1.92	0.51
2:B:874:ILE:O	2:B:878:LEU:HG	2.12	0.49
1:A:910:LEU:HD21	1:A:1020:LEU:HD21	1.94	0.49
1:A:884:VAL:HG23	1:A:965:ILE:O	2.13	0.48

There are no symmetry-related clashes.

5.3 Torsion angles [i](#)

5.3.1 Protein backbone [i](#)

In the following table, the Percentiles column shows the percent Ramachandran outliers of the chain as a percentile score with respect to all X-ray entries followed by that with respect to entries of similar resolution.

The Analysed column shows the number of residues for which the backbone conformation was analysed, and the total number of residues.

Mol	Chain	Analysed	Favoured	Allowed	Outliers	Percentiles	
1	A	259/283 (92%)	245 (95%)	12 (5%)	2 (1%)	22	64
2	B	267/283 (94%)	250 (94%)	16 (6%)	1 (0%)	38	78
All	All	526/566 (93%)	495 (94%)	28 (5%)	3 (1%)	28	70

All (3) Ramachandran outliers are listed below:

Mol	Chain	Res	Type
1	A	967	ASP
2	B	849	GLY
1	A	1064	PRO

5.3.2 Protein sidechains [i](#)

In the following table, the Percentiles column shows the percent sidechain outliers of the chain as a percentile score with respect to all X-ray entries followed by that with respect to entries of similar

resolution.

The Analysed column shows the number of residues for which the sidechain conformation was analysed, and the total number of residues.

Mol	Chain	Analysed	Rotameric	Outliers	Percentiles	
1	A	230/245 (94%)	223 (97%)	7 (3%)	46	81
2	B	239/245 (98%)	233 (98%)	6 (2%)	53	84
All	All	469/490 (96%)	456 (97%)	13 (3%)	49	82

5 of 13 residues with a non-rotameric sidechain are listed below:

Mol	Chain	Res	Type
1	A	1050	LEU
1	A	1089	SER
2	B	905	LEU
1	A	1047	LEU
2	B	897	SER

Some sidechains can be flipped to improve hydrogen bonding and reduce clashes. All (2) such sidechains are listed below:

Mol	Chain	Res	Type
1	A	869	GLN
2	B	915	GLN

5.3.3 RNA ⓘ

There are no RNA molecules in this entry.

5.4 Non-standard residues in protein, DNA, RNA chains ⓘ

4 non-standard protein/DNA/RNA residues are modelled in this entry.

In the following table, the Counts columns list the number of bonds (or angles) for which Mogul statistics could be retrieved, the number of bonds (or angles) that are observed in the model and the number of bonds (or angles) that are defined in the chemical component dictionary. The Link column lists molecule types, if any, to which the group is linked. The Z score for a bond length (or angle) is the number of standard deviations the observed value is removed from the expected value. A bond length (or angle) with $|Z| > 2$ is considered an outlier worth inspection. RMSZ is the root-mean-square of all Z scores of the bond lengths (or angles).

Mol	Type	Chain	Res	Link	Bond lengths			Bond angles		
					Counts	RMSZ	# Z > 2	Counts	RMSZ	# Z > 2
1	PTR	A	980	1	15,16,17	1.97	1 (6%)	19,22,24	0.70	0
1	PTR	A	981	1	15,16,17	1.88	2 (13%)	19,22,24	0.90	0
2	PTR	B	980	2	15,16,17	2.05	1 (6%)	19,22,24	0.61	0
2	PTR	B	981	2	15,16,17	1.99	1 (6%)	19,22,24	0.66	0

In the following table, the Chirals column lists the number of chiral outliers, the number of chiral centers analysed, the number of these observed in the model and the number defined in the chemical component dictionary. Similar counts are reported in the Torsion and Rings columns. '-' means no outliers of that kind were identified.

Mol	Type	Chain	Res	Link	Chirals	Torsions	Rings
1	PTR	A	980	1	-	0/9/11/13	0/1/1/1
1	PTR	A	981	1	-	0/9/11/13	0/1/1/1
2	PTR	B	980	2	-	0/9/11/13	0/1/1/1
2	PTR	B	981	2	-	0/9/11/13	0/1/1/1

All (5) bond length outliers are listed below:

Mol	Chain	Res	Type	Atoms	Z	Observed(Å)	Ideal(Å)
2	B	980	PTR	OH-CZ	-7.59	1.23	1.40
2	B	981	PTR	OH-CZ	-7.35	1.23	1.40
1	A	980	PTR	OH-CZ	-7.23	1.23	1.40
1	A	981	PTR	OH-CZ	-6.69	1.25	1.40
1	A	981	PTR	CA-C	2.41	1.53	1.50

There are no bond angle outliers.

There are no chirality outliers.

There are no torsion outliers.

There are no ring outliers.

No monomer is involved in short contacts.

5.5 Carbohydrates [i](#)

There are no carbohydrates in this entry.

5.6 Ligand geometry [i](#)

2 ligands are modelled in this entry.

In the following table, the Counts columns list the number of bonds (or angles) for which Mogul statistics could be retrieved, the number of bonds (or angles) that are observed in the model and the number of bonds (or angles) that are defined in the chemical component dictionary. The Link column lists molecule types, if any, to which the group is linked. The Z score for a bond length (or angle) is the number of standard deviations the observed value is removed from the expected value. A bond length (or angle) with $|Z| > 2$ is considered an outlier worth inspection. RMSZ is the root-mean-square of all Z scores of the bond lengths (or angles).

Mol	Type	Chain	Res	Link	Bond lengths			Bond angles		
					Counts	RMSZ	$\# Z > 2$	Counts	RMSZ	$\# Z > 2$
3	G9B	A	2099	1	42,44,44	1.93	7 (16%)	46,63,63	1.33	5 (10%)
3	G9B	B	2099	2	42,44,44	1.95	8 (19%)	46,63,63	1.10	1 (2%)

In the following table, the Chirals column lists the number of chiral outliers, the number of chiral centers analysed, the number of these observed in the model and the number defined in the chemical component dictionary. Similar counts are reported in the Torsion and Rings columns. '-' means no outliers of that kind were identified.

Mol	Type	Chain	Res	Link	Chirals	Torsions	Rings
3	G9B	A	2099	1	-	0/12/32/32	0/6/6/6
3	G9B	B	2099	2	-	0/12/32/32	0/6/6/6

The worst 5 of 15 bond length outliers are listed below:

Mol	Chain	Res	Type	Atoms	Z	Observed(Å)	Ideal(Å)
3	B	2099	G9B	N32-N31	-7.62	1.26	1.35
3	A	2099	G9B	N32-N31	-7.58	1.26	1.35
3	B	2099	G9B	C21-C23	-4.42	1.39	1.45
3	B	2099	G9B	C1-N7	-4.41	1.33	1.39
3	A	2099	G9B	C21-C23	-4.37	1.39	1.45

The worst 5 of 6 bond angle outliers are listed below:

Mol	Chain	Res	Type	Atoms	Z	Observed(°)	Ideal(°)
3	A	2099	G9B	C12-C10-C11	-2.70	118.88	121.55
3	A	2099	G9B	C13-N16-C17	2.13	131.31	127.49
3	A	2099	G9B	C26-N25-C23	2.14	121.22	118.84
3	A	2099	G9B	C10-C11-C13	2.98	121.71	118.50
3	B	2099	G9B	C28-C24-N22	3.50	120.87	116.02

There are no chirality outliers.

There are no torsion outliers.

There are no ring outliers.

No monomer is involved in short contacts.

5.7 Other polymers [i](#)

There are no such residues in this entry.

5.8 Polymer linkage issues [i](#)

There are no chain breaks in this entry.

6 Fit of model and data [i](#)

6.1 Protein, DNA and RNA chains [i](#)

In the following table, the column labelled ‘#RSRZ> 2’ contains the number (and percentage) of RSRZ outliers, followed by percent RSRZ outliers for the chain as percentile scores relative to all X-ray entries and entries of similar resolution. The OWAB column contains the minimum, median, 95th percentile and maximum values of the occupancy-weighted average B-factor per residue. The column labelled ‘Q< 0.9’ lists the number of (and percentage) of residues with an average occupancy less than 0.9.

Mol	Chain	Analysed	<RSRZ>	#RSRZ>2	OWAB(Å²)	Q<0.9	
1	A	267/283 (94%)	-0.43	0	100 100	21, 34, 52, 56	38 (14%)
2	B	272/283 (96%)	-0.41	0	100 100	20, 35, 53, 61	31 (11%)
All	All	539/566 (95%)	-0.42	0	100 100	20, 35, 53, 61	69 (12%)

There are no RSRZ outliers to report.

6.2 Non-standard residues in protein, DNA, RNA chains [i](#)

In the following table, the Atoms column lists the number of modelled atoms in the group and the number defined in the chemical component dictionary. LLDF column lists the quality of electron density of the group with respect to its neighbouring residues in protein, DNA or RNA chains. The B-factors column lists the minimum, median, 95th percentile and maximum values of B factors of atoms in the group. The column labelled ‘Q< 0.9’ lists the number of atoms with occupancy less than 0.9.

Mol	Type	Chain	Res	Atoms	RSCC	RSR	LLDF	B-factors(Å ²)	Q<0.9
1	PTR	A	980	16/17	0.87	0.21	-	43,46,56,57	0
2	PTR	B	980	16/17	0.90	0.17	-	43,46,55,56	0
1	PTR	A	981	16/17	0.79	0.27	-	47,52,64,67	0
2	PTR	B	981	16/17	0.83	0.23	-	45,53,64,68	0

6.3 Carbohydrates [i](#)

There are no carbohydrates in this entry.

6.4 Ligands [i](#)

In the following table, the Atoms column lists the number of modelled atoms in the group and the number defined in the chemical component dictionary. LLDF column lists the quality of electron

density of the group with respect to its neighbouring residues in protein, DNA or RNA chains. The B-factors column lists the minimum, median, 95th percentile and maximum values of B factors of atoms in the group. The column labelled 'Q< 0.9' lists the number of atoms with occupancy less than 0.9.

Mol	Type	Chain	Res	Atoms	RSCC	RSR	LLDF	B-factors(\AA^2)	Q<0.9
3	G9B	B	2099	39/39	0.95	0.19	0.82	24,29,34,34	6
3	G9B	A	2099	39/39	0.93	0.19	-0.04	29,33,38,42	6

6.5 Other polymers

There are no such residues in this entry.