



Full wwPDB X-ray Structure Validation Report ⓘ

Jan 15, 2018 – 03:55 PM EST

PDB ID : 3V4A
Title : Structure of ar lbd with activator peptide and sarm inhibitor 2
Authors : Nique, F.; Hebbe, S.; Peixoto, C.; Annoot, D.; Lefrancois, J.-M.; Duval, E.; Michoux, L.; Triballeau, N.; Lemoullec, J.M.; Mollat, P.; Thauvin, M.; Prange, T.; Minet, D.; Clement-Lacroix, P.; Robin-Jagerschmidt, C.; Fleury, D.; Guedin, D.; Deprez, P.
Deposited on : 2011-12-14
Resolution : 1.95 Å(reported)

This is a Full wwPDB X-ray Structure Validation Report for a publicly released PDB entry.

We welcome your comments at validation@mail.wwpdb.org

A user guide is available at

<http://wwpdb.org/validation/2016/XrayValidationReportHelp>

with specific help available everywhere you see the ⓘ symbol.

The following versions of software and data (see [references ⓘ](#)) were used in the production of this report:

MolProbity	:	4.02b-467
Mogul	:	1.7.2 (RC1), CSD as538be (2017)
Xtriage (Phenix)	:	1.9-1692
EDS	:	rb-20030736
Percentile statistics	:	20161228.v01 (using entries in the PDB archive December 28th 2016)
Refmac	:	5.8.0135
CCP4	:	6.5.0
Ideal geometry (proteins)	:	Engh & Huber (2001)
Ideal geometry (DNA, RNA)	:	Parkinson et al. (1996)
Validation Pipeline (wwPDB-VP)	:	rb-20030736

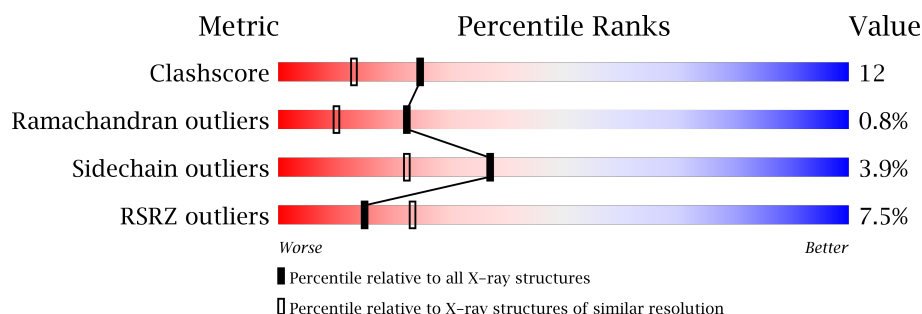
1 Overall quality at a glance

The following experimental techniques were used to determine the structure:

X-RAY DIFFRACTION

The reported resolution of this entry is 1.95 Å.

Percentile scores (ranging between 0-100) for global validation metrics of the entry are shown in the following graphic. The table shows the number of entries on which the scores are based.



Metric	Whole archive (#Entries)	Similar resolution (#Entries, resolution range(Å))
Clashscore	112137	2136 (1.96-1.96)
Ramachandran outliers	110173	2117 (1.96-1.96)
Sidechain outliers	110143	2117 (1.96-1.96)
RSRZ outliers	101464	2018 (1.96-1.96)

The table below summarises the geometric issues observed across the polymeric chains and their fit to the electron density. The red, orange, yellow and green segments on the lower bar indicate the fraction of residues that contain outliers for ≥ 3 , 2, 1 and 0 types of geometric quality criteria. A grey segment represents the fraction of residues that are not modelled. The numeric value for each fraction is indicated below the corresponding segment, with a dot representing fractions $\leq 5\%$. The upper red bar (where present) indicates the fraction of residues that have poor fit to the electron density. The numeric value is given above the bar.

Mol	Chain	Length	Quality of chain
1	A	249	
2	B	11	

2 Entry composition [i](#)

There are 5 unique types of molecules in this entry. The entry contains 2374 atoms, of which 0 are hydrogens and 0 are deuteriums.

In the tables below, the ZeroOcc column contains the number of atoms modelled with zero occupancy, the AltConf column contains the number of residues with at least one atom in alternate conformation and the Trace column contains the number of residues modelled with at most 2 atoms.

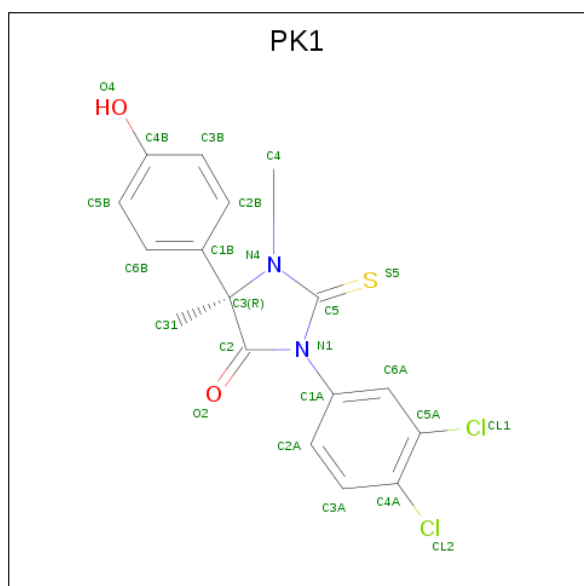
- Molecule 1 is a protein called Androgen receptor.

Mol	Chain	Residues	Atoms					ZeroOcc	AltConf	Trace
1	A	244	Total	C	N	O	S	0	4	0
			2005	1299	342	345	19			

- Molecule 2 is a protein called Androgen receptor.

Mol	Chain	Residues	Atoms				ZeroOcc	AltConf	Trace
2	B	11	Total	C	N	O	0	0	0
			90	57	17	16			

- Molecule 3 is (5R)-3-(3,4-dichlorophenyl)-5-(4-hydroxyphenyl)-1,5-dimethyl-2-thioxoimidazolidin-4-one (three-letter code: PK1) (formula: C₁₇H₁₄Cl₂N₂O₂S).



Mol	Chain	Residues	Atoms					ZeroOcc	AltConf
3	A	1	Total	C	Cl	N	O	0	0
			24	17	2	2	2		

- Molecule 4 is SULFATE ION (three-letter code: SO4) (formula: O₄S).



Mol	Chain	Residues	Atoms			ZeroOcc	AltConf
4	A	1	Total	O	S	0	0
			5	4	1		

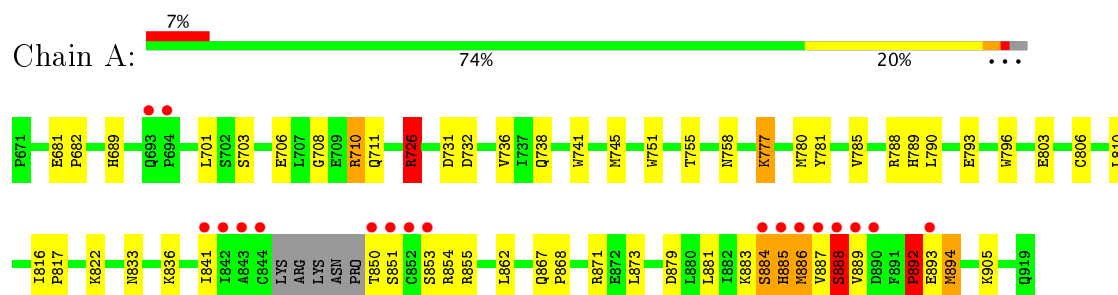
- Molecule 5 is water.

Mol	Chain	Residues	Atoms		ZeroOcc	AltConf
5	A	244	Total	O	0	0
			244	244		
5	B	6	Total	O	0	0
			6	6		

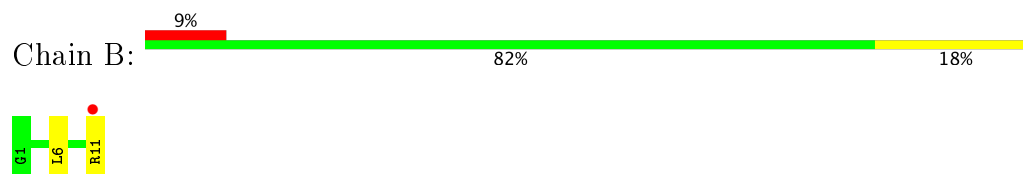
3 Residue-property plots [i](#)

These plots are drawn for all protein, RNA and DNA chains in the entry. The first graphic for a chain summarises the proportions of the various outlier classes displayed in the second graphic. The second graphic shows the sequence view annotated by issues in geometry and electron density. Residues are color-coded according to the number of geometric quality criteria for which they contain at least one outlier: green = 0, yellow = 1, orange = 2 and red = 3 or more. A red dot above a residue indicates a poor fit to the electron density ($RSRZ > 2$). Stretches of 2 or more consecutive residues without any outlier are shown as a green connector. Residues present in the sample, but not in the model, are shown in grey.

- Molecule 1: Androgen receptor



- Molecule 2: Androgen receptor



4 Data and refinement statistics

Property	Value	Source
Space group	P 21 21 21	Depositor
Cell constants a, b, c, α , β , γ	54.45Å 66.81Å 69.85Å 90.00° 90.00° 90.00°	Depositor
Resolution (Å)	10.00 – 1.95 36.12 – 1.95	Depositor EDS
% Data completeness (in resolution range)	99.5 (10.00-1.95) 100.0 (36.12-1.95)	Depositor EDS
R_{merge}	0.05	Depositor
R_{sym}	(Not available)	Depositor
$\langle I/\sigma(I) \rangle$ ¹	6.50 (at 1.95Å)	Xtriage
Refinement program	SHELXL-97	Depositor
R, R_{free}	0.172 , (Not available) 0.168 , (Not available)	Depositor DCC
R_{free} test set	No test flags present.	DCC
Wilson B-factor (Å ²)	16.4	Xtriage
Anisotropy	0.242	Xtriage
Bulk solvent k_{sol} (e/Å ³), B_{sol} (Å ²)	0.34 , 98.2	EDS
L-test for twinning ²	$\langle L \rangle = 0.49$, $\langle L^2 \rangle = 0.32$	Xtriage
Estimated twinning fraction	0.022 for -h,l,k	Xtriage
F_o, F_c correlation	0.95	EDS
Total number of atoms	2374	wwPDB-VP
Average B, all atoms (Å ²)	22.0	wwPDB-VP

Xtriage's analysis on translational NCS is as follows: *The largest off-origin peak in the Patterson function is 8.79% of the height of the origin peak. No significant pseudotranslation is detected.*

¹Intensities estimated from amplitudes.

²Theoretical values of $\langle |L| \rangle$, $\langle L^2 \rangle$ for acentric reflections are 0.5, 0.333 respectively for untwinned datasets, and 0.375, 0.2 for perfectly twinned datasets.

5 Model quality

5.1 Standard geometry

Bond lengths and bond angles in the following residue types are not validated in this section: PK1, SO4

The Z score for a bond length (or angle) is the number of standard deviations the observed value is removed from the expected value. A bond length (or angle) with $|Z| > 5$ is considered an outlier worth inspection. RMSZ is the root-mean-square of all Z scores of the bond lengths (or angles).

Mol	Chain	Bond lengths		Bond angles	
		RMSZ	$\# Z > 5$	RMSZ	$\# Z > 5$
1	A	0.36	0/2076	1.01	6/2801 (0.2%)
2	B	0.37	0/91	0.94	0/119
All	All	0.36	0/2167	1.00	6/2920 (0.2%)

Chiral center outliers are detected by calculating the chiral volume of a chiral center and verifying if the center is modelled as a planar moiety or with the opposite hand. A planarity outlier is detected by checking planarity of atoms in a peptide group, atoms in a mainchain group or atoms of a sidechain that are expected to be planar.

Mol	Chain	#Chirality outliers	#Planarity outliers
1	A	0	1

There are no bond length outliers.

All (6) bond angle outliers are listed below:

Mol	Chain	Res	Type	Atoms	Z	Observed(°)	Ideal(°)
1	A	726	ARG	CD-NE-CZ	8.35	135.29	123.60
1	A	855	ARG	NE-CZ-NH1	-6.28	117.16	120.30
1	A	871	ARG	CD-NE-CZ	6.09	132.12	123.60
1	A	892	PRO	C-N-CA	5.96	136.61	121.70
1	A	741	TRP	CB-CG-CD2	5.64	133.93	126.60
1	A	710	ARG	NE-CZ-NH2	-5.39	117.60	120.30

There are no chirality outliers.

All (1) planarity outliers are listed below:

Mol	Chain	Res	Type	Group
1	A	892	PRO	Peptide

5.2 Too-close contacts ⓘ

In the following table, the Non-H and H(model) columns list the number of non-hydrogen atoms and hydrogen atoms in the chain respectively. The H(added) column lists the number of hydrogen atoms added and optimized by MolProbity. The Clashes column lists the number of clashes within the asymmetric unit, whereas Symm-Clashes lists symmetry related clashes.

Mol	Chain	Non-H	H(model)	H(added)	Clashes	Symm-Clashes
1	A	2005	0	2022	49	0
2	B	90	0	88	5	0
3	A	24	0	14	0	0
4	A	5	0	0	1	0
5	A	244	0	0	14	0
5	B	6	0	0	2	0
All	All	2374	0	2124	52	0

The all-atom clashscore is defined as the number of clashes found per 1000 atoms (including hydrogen atoms). The all-atom clashscore for this structure is 12.

All (52) close contacts within the same asymmetric unit are listed below, sorted by their clash magnitude.

Atom-1	Atom-2	Interatomic distance (Å)	Clash overlap (Å)
1:A:879:ASP:O	1:A:883:LYS:HG2	1.83	0.78
1:A:833:ASN:HB3	5:A:2067:HOH:O	1.87	0.75
2:B:11:ARG:HD2	5:B:2029:HOH:O	1.90	0.71
1:A:893:GLU:HA	5:A:2213:HOH:O	1.96	0.66
1:A:894:MET:HE3	2:B:6:LEU:HD22	1.77	0.66
1:A:892:PRO:HG2	5:A:2082:HOH:O	1.96	0.65
1:A:893:GLU:HB2	5:A:2045:HOH:O	1.96	0.65
1:A:889:VAL:HG13	5:A:2161:HOH:O	1.96	0.65
1:A:781:TYR:O	1:A:785:VAL:HG23	1.98	0.63
1:A:790:LEU:HD12	1:A:862:LEU:HD11	1.81	0.62
1:A:881:LEU:O	1:A:884:SER:HB3	2.03	0.59
1:A:726:ARG:HB2	5:A:2170:HOH:O	2.02	0.58
1:A:701[B]:LEU:CD1	1:A:889:VAL:HG11	2.33	0.58
1:A:793:GLU:HG3	5:A:2199:HOH:O	2.03	0.57
1:A:780:MET:HE2	1:A:873:LEU:CD2	2.35	0.56
1:A:758:ASN:HB3	5:A:2198:HOH:O	2.07	0.54
1:A:751:TRP:O	1:A:755:THR:HG23	2.07	0.54
1:A:886:MET:HA	1:A:886:MET:CE	2.37	0.52
1:A:793:GLU:HG2	1:A:796:TRP:CE3	2.45	0.52
1:A:789:HIS:HD2	5:A:2199:HOH:O	1.92	0.52
1:A:711:GLN:CB	1:A:745:MET:HE2	2.40	0.51

Continued on next page...

Continued from previous page...

Atom-1	Atom-2	Interatomic distance (Å)	Clash overlap (Å)
1:A:867:GLN:HB2	1:A:868:PRO:HD3	1.91	0.51
1:A:894:MET:CE	2:B:6:LEU:HD22	2.41	0.50
1:A:887:VAL:HG12	1:A:887:VAL:O	2.11	0.49
1:A:706:GLU:O	1:A:710:ARG:HG3	2.12	0.49
1:A:701[B]:LEU:HD13	1:A:889:VAL:HG11	1.93	0.49
1:A:803:GLU:HA	1:A:841:ILE:HD11	1.95	0.49
1:A:689:HIS:HD2	1:A:703:SER:OG	1.95	0.48
1:A:850:THR:N	1:A:853:SER:HB2	2.29	0.48
1:A:689:HIS:HE1	5:A:2075:HOH:O	1.95	0.48
1:A:732:ASP:O	1:A:736:VAL:HB	2.16	0.46
1:A:806[B]:CYS:SG	1:A:841:ILE:HD13	2.55	0.46
1:A:708:GLY:O	1:A:745:MET:HE1	2.16	0.46
1:A:788:ARG:NH2	5:A:2034:HOH:O	2.49	0.45
1:A:884:SER:O	1:A:888:SER:N	2.50	0.45
1:A:905:LYS:NZ	5:A:2152:HOH:O	2.50	0.45
1:A:780:MET:HE2	1:A:873:LEU:HD22	1.99	0.45
2:B:11:ARG:H	2:B:11:ARG:HG3	1.38	0.44
2:B:11:ARG:NH2	5:B:2162:HOH:O	2.50	0.44
1:A:777:LYS:HA	1:A:777:LYS:HD2	1.53	0.44
1:A:780:MET:HE2	1:A:873:LEU:HD23	2.00	0.44
1:A:711:GLN:HB2	1:A:745:MET:HE2	2.00	0.43
1:A:738:GLN:NE2	5:A:2126:HOH:O	2.51	0.43
1:A:788:ARG:NE	5:A:2204:HOH:O	2.52	0.42
1:A:850:THR:OG1	1:A:851:SER:N	2.50	0.42
1:A:883:LYS:O	1:A:885:HIS:N	2.52	0.42
1:A:777:LYS:NZ	4:A:1300:SO4:O3	2.50	0.42
1:A:884:SER:O	1:A:888:SER:HA	2.20	0.41
1:A:816:ILE:HB	1:A:817:PRO:HD2	2.02	0.41
1:A:731:ASP:OD2	1:A:822:LYS:HE3	2.20	0.41
1:A:681:GLU:HA	1:A:682:PRO:HD3	1.94	0.40

There are no symmetry-related clashes.

5.3 Torsion angles ⓘ

5.3.1 Protein backbone ⓘ

In the following table, the Percentiles column shows the percent Ramachandran outliers of the chain as a percentile score with respect to all X-ray entries followed by that with respect to entries of similar resolution.

The Analysed column shows the number of residues for which the backbone conformation was analysed, and the total number of residues.

Mol	Chain	Analysed	Favoured	Allowed	Outliers	Percentiles	
1	A	244/249 (98%)	235 (96%)	7 (3%)	2 (1%)	22	10
2	B	9/11 (82%)	9 (100%)	0	0	100	100
All	All	253/260 (97%)	244 (96%)	7 (3%)	2 (1%)	22	10

All (2) Ramachandran outliers are listed below:

Mol	Chain	Res	Type
1	A	884	SER
1	A	888	SER

5.3.2 Protein sidechains ⓘ

In the following table, the Percentiles column shows the percent sidechain outliers of the chain as a percentile score with respect to all X-ray entries followed by that with respect to entries of similar resolution.

The Analysed column shows the number of residues for which the sidechain conformation was analysed, and the total number of residues.

Mol	Chain	Analysed	Rotameric	Outliers	Percentiles	
1	A	226/227 (100%)	217 (96%)	9 (4%)	36	21
2	B	9/9 (100%)	9 (100%)	0	100	100
All	All	235/236 (100%)	226 (96%)	9 (4%)	37	24

All (9) residues with a non-rotameric sidechain are listed below:

Mol	Chain	Res	Type
1	A	726	ARG
1	A	777	LYS
1	A	810	LEU
1	A	836	LYS
1	A	854	ARG
1	A	885	HIS
1	A	886	MET
1	A	888	SER
1	A	894	MET

Some sidechains can be flipped to improve hydrogen bonding and reduce clashes. All (6) such

sidechains are listed below:

Mol	Chain	Res	Type
1	A	675	ASN
1	A	689	HIS
1	A	714	HIS
1	A	733	GLN
1	A	738	GLN
1	A	789	HIS

5.3.3 RNA [i](#)

There are no RNA molecules in this entry.

5.4 Non-standard residues in protein, DNA, RNA chains [i](#)

There are no non-standard protein/DNA/RNA residues in this entry.

5.5 Carbohydrates [i](#)

There are no carbohydrates in this entry.

5.6 Ligand geometry [i](#)

2 ligands are modelled in this entry.

In the following table, the Counts columns list the number of bonds (or angles) for which Mogul statistics could be retrieved, the number of bonds (or angles) that are observed in the model and the number of bonds (or angles) that are defined in the Chemical Component Dictionary. The Link column lists molecule types, if any, to which the group is linked. The Z score for a bond length (or angle) is the number of standard deviations the observed value is removed from the expected value. A bond length (or angle) with $|Z| > 2$ is considered an outlier worth inspection. RMSZ is the root-mean-square of all Z scores of the bond lengths (or angles).

Mol	Type	Chain	Res	Link	Bond lengths			Bond angles		
					Counts	RMSZ	$\# Z > 2$	Counts	RMSZ	$\# Z > 2$
4	SO4	A	1300	-	4,4,4	0.12	0	6,6,6	0.06	0
3	PK1	A	950	-	23,26,26	3.00	3 (13%)	28,40,40	1.56	6 (21%)

In the following table, the Chirals column lists the number of chiral outliers, the number of chiral centers analysed, the number of these observed in the model and the number defined in the Chemical Component Dictionary. Similar counts are reported in the Torsion and Rings columns. '-' means no outliers of that kind were identified.

Mol	Type	Chain	Res	Link	Chirals	Torsions	Rings
4	SO4	A	1300	-	-	0/0/0/0	0/0/0/0
3	PK1	A	950	-	-	0/10/34/34	0/3/3/3

All (3) bond length outliers are listed below:

Mol	Chain	Res	Type	Atoms	Z	Observed(Å)	Ideal(Å)
3	A	950	PK1	C5-S5	-9.97	1.45	1.67
3	A	950	PK1	C5-N1	4.65	1.45	1.38
3	A	950	PK1	C5-N4	8.61	1.44	1.35

All (6) bond angle outliers are listed below:

Mol	Chain	Res	Type	Atoms	Z	Observed(°)	Ideal(°)
3	A	950	PK1	S5-C5-N1	-2.31	123.48	126.69
3	A	950	PK1	C3A-C2A-C1A	-2.24	117.30	120.34
3	A	950	PK1	C6A-C5A-C4A	-2.06	117.36	120.22
3	A	950	PK1	C2A-C1A-N1	2.33	122.47	119.63
3	A	950	PK1	C4-N4-C5	3.50	127.44	123.47
3	A	950	PK1	C1A-N1-C5	3.88	130.31	124.28

There are no chirality outliers.

There are no torsion outliers.

There are no ring outliers.

1 monomer is involved in 1 short contact:

Mol	Chain	Res	Type	Clashes	Symm-Clashes
4	A	1300	SO4	1	0

5.7 Other polymers [i](#)

There are no such residues in this entry.

5.8 Polymer linkage issues [i](#)

There are no chain breaks in this entry.

6 Fit of model and data ⓘ

6.1 Protein, DNA and RNA chains ⓘ

In the following table, the column labelled ‘#RSRZ> 2’ contains the number (and percentage) of RSRZ outliers, followed by percent RSRZ outliers for the chain as percentile scores relative to all X-ray entries and entries of similar resolution. The OWAB column contains the minimum, median, 95th percentile and maximum values of the occupancy-weighted average B-factor per residue. The column labelled ‘Q< 0.9’ lists the number of (and percentage) of residues with an average occupancy less than 0.9.

Mol	Chain	Analysed	<RSRZ>	#RSRZ>2	OWAB(Å ²)	Q<0.9
1	A	244/249 (97%)	0.29	18 (7%) 15 24	9, 16, 49, 112	11 (4%)
2	B	11/11 (100%)	0.16	1 (9%) 10 16	13, 22, 31, 54	0
All	All	255/260 (98%)	0.29	19 (7%) 15 23	9, 16, 54, 112	11 (4%)

All (19) RSRZ outliers are listed below:

Mol	Chain	Res	Type	RSRZ
1	A	886	MET	11.6
1	A	885	HIS	11.0
1	A	844	CYS	9.9
1	A	850	THR	8.5
1	A	889	VAL	8.4
1	A	887	VAL	6.4
1	A	852	CYS	6.3
1	A	890	ASP	6.3
1	A	888	SER	5.9
1	A	884	SER	5.7
1	A	843	ALA	5.4
1	A	853	SER	5.2
1	A	851	SER	3.5
1	A	893	GLU	2.9
1	A	842	ILE	2.8
1	A	841	ILE	2.4
1	A	693	GLN	2.4
1	A	694	PRO	2.2
2	B	11	ARG	2.0

6.2 Non-standard residues in protein, DNA, RNA chains ⓘ

There are no non-standard protein/DNA/RNA residues in this entry.

6.3 Carbohydrates [i](#)

There are no carbohydrates in this entry.

6.4 Ligands [i](#)

In the following table, the Atoms column lists the number of modelled atoms in the group and the number defined in the chemical component dictionary. LLDF column lists the quality of electron density of the group with respect to its neighbouring residues in protein, DNA or RNA chains. The B-factors column lists the minimum, median, 95th percentile and maximum values of B factors of atoms in the group. The column labelled 'Q< 0.9' lists the number of atoms with occupancy less than 0.9.

Mol	Type	Chain	Res	Atoms	RSCC	RSR	LLDF	B-factors(\AA^2)	Q<0.9
4	SO4	A	1300	5/5	0.83	0.19	-0.21	43,50,96,97	0
3	PK1	A	950	24/24	0.97	0.08	-0.78	7,11,17,32	0

6.5 Other polymers [i](#)

There are no such residues in this entry.