



Full wwPDB X-ray Structure Validation Report ⓘ

Feb 5, 2018 – 06:40 PM EST

PDB ID : 5V6N
Title : Crystal Structure of the highly open channel-stabilized mutant C27S + K33C + I9'A + N21'C of GLIC under reducing conditions.
Authors : Gonzalez-Gutierrez, G.; Grosman, C.
Deposited on : 2017-03-17
Resolution : 3.35 Å(reported)

This is a Full wwPDB X-ray Structure Validation Report for a publicly released PDB entry.

We welcome your comments at validation@mail.wwpdb.org

A user guide is available at

<http://wwpdb.org/validation/2016/XrayValidationReportHelp>

with specific help available everywhere you see the ⓘ symbol.

The following versions of software and data (see [references ⓘ](#)) were used in the production of this report:

MolProbity : 4.02b-467
Mogul : 1.7.2 (RC1), CSD as538be (2017)
Xtriage (Phenix) : 1.9-1692
EDS : rb-20030736
Percentile statistics : 20161228.v01 (using entries in the PDB archive December 28th 2016)
Refmac : 5.8.0135
CCP4 : 6.5.0
Ideal geometry (proteins) : Engh & Huber (2001)
Ideal geometry (DNA, RNA) : Parkinson et al. (1996)
Validation Pipeline (wwPDB-VP) : rb-20030736

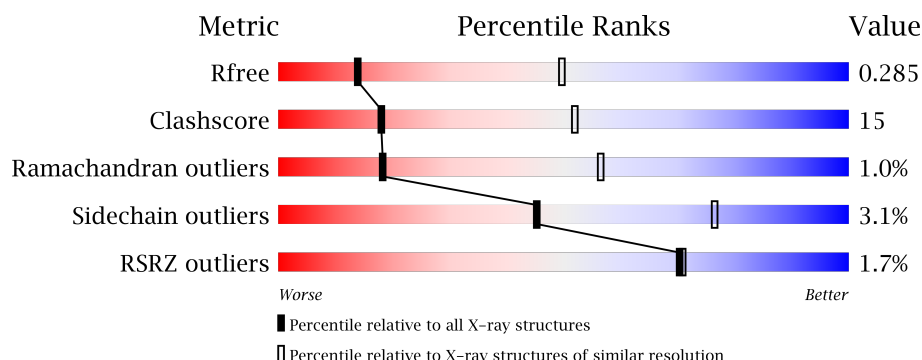
1 Overall quality at a glance

The following experimental techniques were used to determine the structure:

X-RAY DIFFRACTION

The reported resolution of this entry is 3.35 Å.

Percentile scores (ranging between 0-100) for global validation metrics of the entry are shown in the following graphic. The table shows the number of entries on which the scores are based.



Metric	Whole archive (#Entries)	Similar resolution (#Entries, resolution range(Å))
R_{free}	100719	1156 (3.42-3.30)
Clashscore	112137	1231 (3.42-3.30)
Ramachandran outliers	110173	1212 (3.42-3.30)
Sidechain outliers	110143	1211 (3.42-3.30)
RSRZ outliers	101464	1165 (3.42-3.30)

The table below summarises the geometric issues observed across the polymeric chains and their fit to the electron density. The red, orange, yellow and green segments on the lower bar indicate the fraction of residues that contain outliers for ≥ 3 , 2, 1 and 0 types of geometric quality criteria. A grey segment represents the fraction of residues that are not modelled. The numeric value for each fraction is indicated below the corresponding segment, with a dot representing fractions $\leq 5\%$. The upper red bar (where present) indicates the fraction of residues that have poor fit to the electron density. The numeric value is given above the bar.

Mol	Chain	Length	Quality of chain
1	A	310	<div> <div>3%</div> <div>69%</div> <div>28%</div> <div>..</div> </div>
1	B	310	<div> <div>%</div> <div>67%</div> <div>32%</div> <div>..</div> </div>
1	C	310	<div> <div>2%</div> <div>61%</div> <div>36%</div> <div>..</div> </div>
1	D	310	<div> <div>%</div> <div>66%</div> <div>33%</div> <div>.</div> </div>
1	E	310	<div> <div>2%</div> <div>63%</div> <div>35%</div> <div>..</div> </div>

The following table lists non-polymeric compounds, carbohydrate monomers and non-standard residues in protein, DNA, RNA chains that are outliers for geometric or electron-density-fit criteria:

Mol	Type	Chain	Res	Chirality	Geometry	Clashes	Electron density
2	LMT	A	402	-	-	-	X
2	LMT	B	402	-	-	-	X
2	LMT	C	401	-	-	-	X
2	LMT	D	401	-	-	-	X
2	LMT	E	401	-	-	-	X
4	SO4	D	402	-	-	X	-

2 Entry composition

There are 4 unique types of molecules in this entry. The entry contains 12646 atoms, of which 0 are hydrogens and 0 are deuteriums.

In the tables below, the ZeroOcc column contains the number of atoms modelled with zero occupancy, the AltConf column contains the number of residues with at least one atom in alternate conformation and the Trace column contains the number of residues modelled with at most 2 atoms.

- Molecule 1 is a protein called Proton-gated ion channel.

Mol	Chain	Residues	Atoms					ZeroOcc	AltConf	Trace
1	C	310	Total	C	N	O	S	0	0	0
			2512	1655	401	451	5			
1	A	310	Total	C	N	O	S	0	0	0
			2512	1655	401	451	5			
1	B	310	Total	C	N	O	S	0	0	0
			2512	1655	401	451	5			
1	D	310	Total	C	N	O	S	0	0	0
			2512	1655	401	451	5			
1	E	310	Total	C	N	O	S	0	0	0
			2512	1655	401	451	5			

There are 20 discrepancies between the modelled and reference sequences:

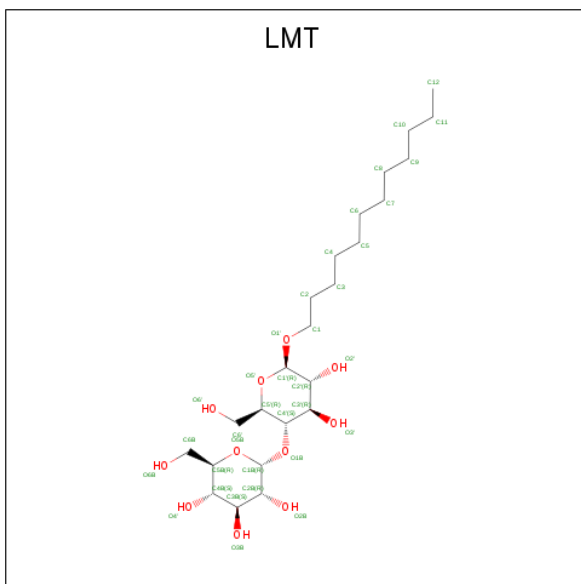
Chain	Residue	Modelled	Actual	Comment	Reference
C	27	SER	CYS	engineered mutation	UNP Q7NDN8
C	33	CYS	LYS	engineered mutation	UNP Q7NDN8
C	233	ALA	ILE	engineered mutation	UNP Q7NDN8
C	245	CYS	ASN	engineered mutation	UNP Q7NDN8
A	27	SER	CYS	engineered mutation	UNP Q7NDN8
A	33	CYS	LYS	engineered mutation	UNP Q7NDN8
A	233	ALA	ILE	engineered mutation	UNP Q7NDN8
A	245	CYS	ASN	engineered mutation	UNP Q7NDN8
B	27	SER	CYS	engineered mutation	UNP Q7NDN8
B	33	CYS	LYS	engineered mutation	UNP Q7NDN8
B	233	ALA	ILE	engineered mutation	UNP Q7NDN8
B	245	CYS	ASN	engineered mutation	UNP Q7NDN8
D	27	SER	CYS	engineered mutation	UNP Q7NDN8
D	33	CYS	LYS	engineered mutation	UNP Q7NDN8
D	233	ALA	ILE	engineered mutation	UNP Q7NDN8
D	245	CYS	ASN	engineered mutation	UNP Q7NDN8
E	27	SER	CYS	engineered mutation	UNP Q7NDN8
E	33	CYS	LYS	engineered mutation	UNP Q7NDN8
E	233	ALA	ILE	engineered mutation	UNP Q7NDN8

Continued on next page...

Continued from previous page...

Chain	Residue	Modelled	Actual	Comment	Reference
E	245	CYS	ASN	engineered mutation	UNP Q7NDN8

- Molecule 2 is DODECYL-BETA-D-MALTOSE (three-letter code: LMT) (formula: $C_{24}H_{46}O_{11}$).

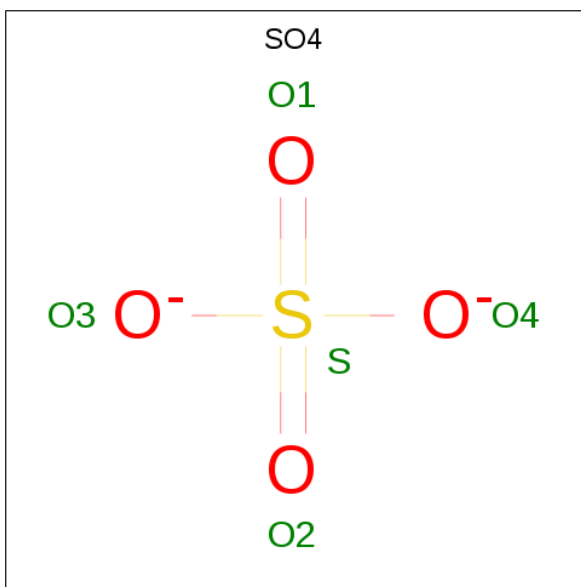


Mol	Chain	Residues	Atoms	ZeroOcc	AltConf
2	C	1	Total C 12 12	0	0
2	A	1	Total C 12 12	0	0
2	B	1	Total C 12 12	0	0
2	D	1	Total C 12 12	0	0
2	E	1	Total C 12 12	0	0

- Molecule 3 is SODIUM ION (three-letter code: NA) (formula: Na).

Mol	Chain	Residues	Atoms	ZeroOcc	AltConf
3	A	1	Total Na 1 1	0	0

- Molecule 4 is SULFATE ION (three-letter code: SO4) (formula: O_4S).

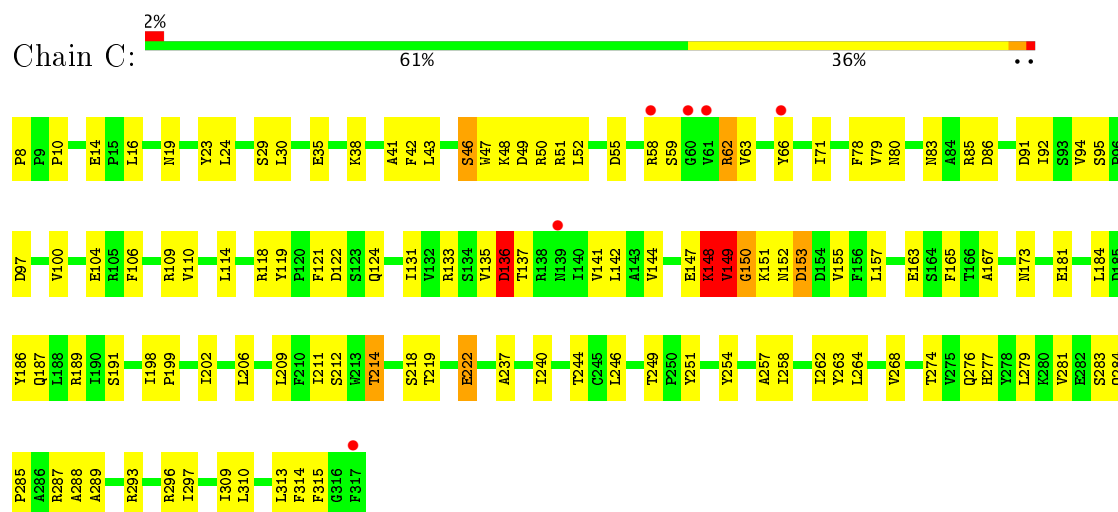


Mol	Chain	Residues	Atoms			ZeroOcc	AltConf
4	A	1	Total	O	S	0	0
			5	4	1		
4	B	1	Total	O	S	0	0
			5	4	1		
4	B	1	Total	O	S	0	0
			5	4	1		
4	D	1	Total	O	S	0	0
			5	4	1		
4	E	1	Total	O	S	0	0
			5	4	1		

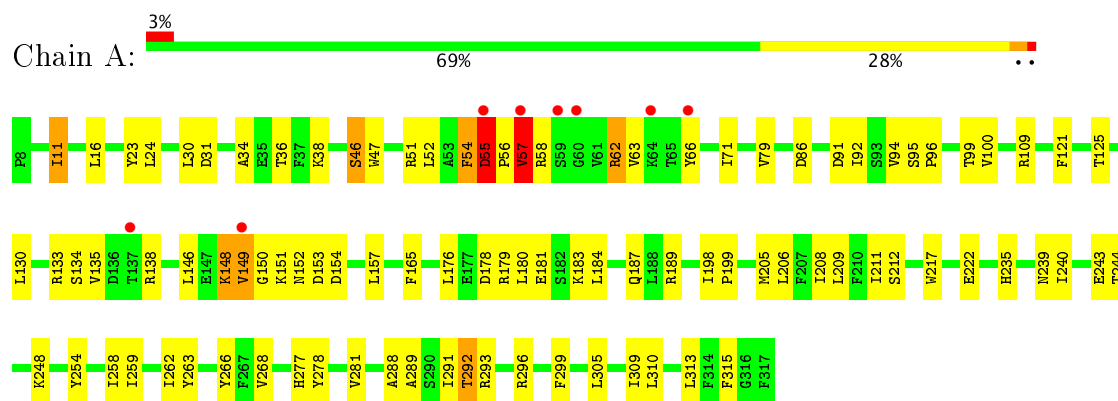
3 Residue-property plots

These plots are drawn for all protein, RNA and DNA chains in the entry. The first graphic for a chain summarises the proportions of the various outlier classes displayed in the second graphic. The second graphic shows the sequence view annotated by issues in geometry and electron density. Residues are color-coded according to the number of geometric quality criteria for which they contain at least one outlier: green = 0, yellow = 1, orange = 2 and red = 3 or more. A red dot above a residue indicates a poor fit to the electron density ($RSRZ > 2$). Stretches of 2 or more consecutive residues without any outlier are shown as a green connector. Residues present in the sample, but not in the model, are shown in grey.

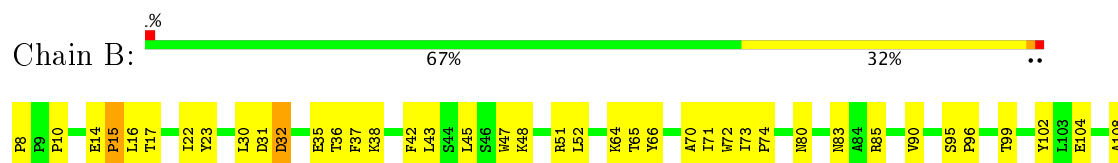
• Molecule 1: Proton-gated ion channel

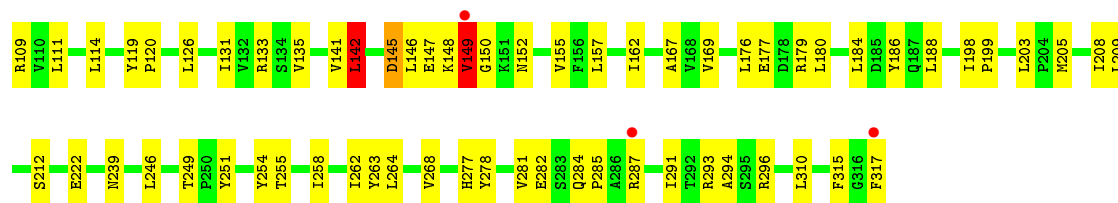


• Molecule 1: Proton-gated ion channel

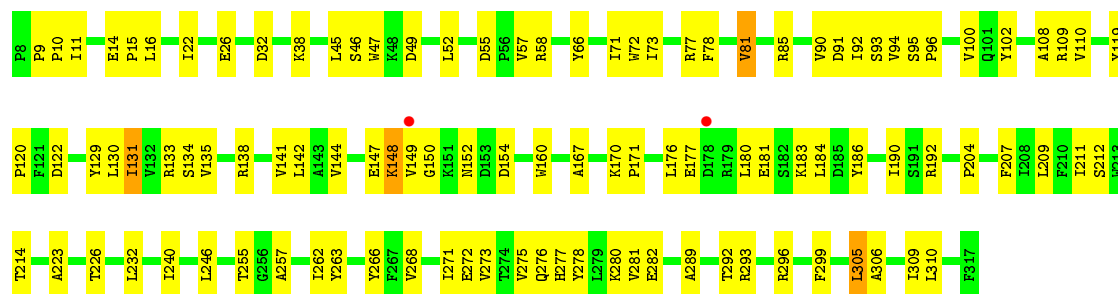


• Molecule 1: Proton-gated ion channel

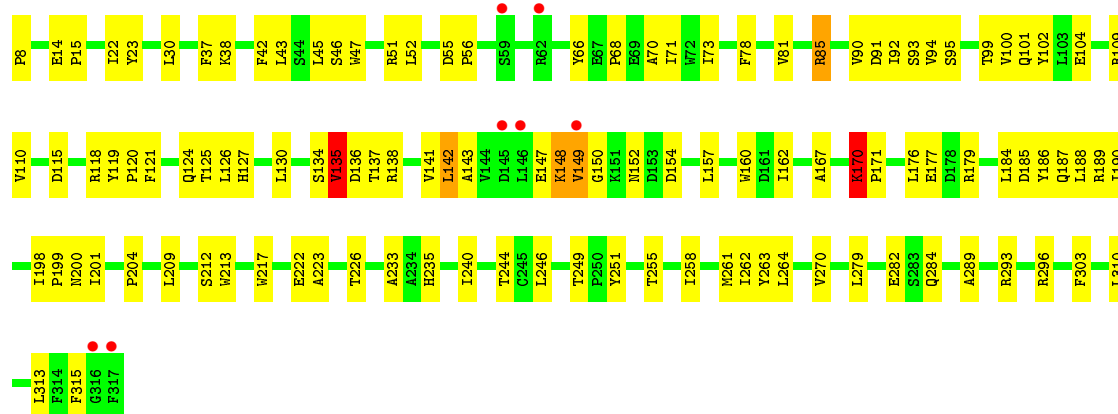




• Molecule 1: Proton-gated ion channel



• Molecule 1: Proton-gated ion channel



4 Data and refinement statistics

Property	Value	Source
Space group	C 1 2 1	Depositor
Cell constants a, b, c, α , β , γ	177.18Å 134.06Å 159.68Å 90.00° 101.13° 90.00°	Depositor
Resolution (Å)	59.76 – 3.35 59.76 – 3.36	Depositor EDS
% Data completeness (in resolution range)	99.8 (59.76-3.35) 99.8 (59.76-3.36)	Depositor EDS
R_{merge}	0.24	Depositor
R_{sym}	(Not available)	Depositor
$\langle I/\sigma(I) \rangle$ ¹	2.08 (at 3.33Å)	Xtriage
Refinement program	PHENIX 1.9_1692	Depositor
R, R_{free}	0.231 , 0.284 0.231 , 0.285	Depositor DCC
R_{free} test set	2626 reflections (5.01%)	DCC
Wilson B-factor (Å ²)	68.4	Xtriage
Anisotropy	0.358	Xtriage
Bulk solvent k_{sol} (e/Å ³), B_{sol} (Å ²)	0.28 , 43.1	EDS
L-test for twinning ²	$\langle L \rangle = 0.46$, $\langle L^2 \rangle = 0.29$	Xtriage
Estimated twinning fraction	No twinning to report.	Xtriage
F_o, F_c correlation	0.88	EDS
Total number of atoms	12646	wwPDB-VP
Average B, all atoms (Å ²)	67.0	wwPDB-VP

Xtriage's analysis on translational NCS is as follows: *The largest off-origin peak in the Patterson function is 4.16% of the height of the origin peak. No significant pseudotranslation is detected.*

¹Intensities estimated from amplitudes.

²Theoretical values of $\langle |L| \rangle$, $\langle L^2 \rangle$ for acentric reflections are 0.5, 0.333 respectively for untwinned datasets, and 0.375, 0.2 for perfectly twinned datasets.

5 Model quality [i](#)

5.1 Standard geometry [i](#)

Bond lengths and bond angles in the following residue types are not validated in this section: NA, LMT, SO4

The Z score for a bond length (or angle) is the number of standard deviations the observed value is removed from the expected value. A bond length (or angle) with $|Z| > 5$ is considered an outlier worth inspection. RMSZ is the root-mean-square of all Z scores of the bond lengths (or angles).

Mol	Chain	Bond lengths		Bond angles	
		RMSZ	# $ Z > 5$	RMSZ	# $ Z > 5$
1	A	0.57	0/2580	0.82	4/3525 (0.1%)
1	B	0.53	0/2580	0.76	3/3525 (0.1%)
1	C	0.60	1/2580 (0.0%)	0.80	1/3525 (0.0%)
1	D	0.56	0/2580	0.78	2/3525 (0.1%)
1	E	0.57	1/2580 (0.0%)	0.77	4/3525 (0.1%)
All	All	0.56	2/12900 (0.0%)	0.79	14/17625 (0.1%)

Chiral center outliers are detected by calculating the chiral volume of a chiral center and verifying if the center is modelled as a planar moiety or with the opposite hand. A planarity outlier is detected by checking planarity of atoms in a peptide group, atoms in a mainchain group or atoms of a sidechain that are expected to be planar.

Mol	Chain	#Chirality outliers	#Planarity outliers
1	C	0	2
1	E	0	1
All	All	0	3

All (2) bond length outliers are listed below:

Mol	Chain	Res	Type	Atoms	Z	Observed(Å)	Ideal(Å)
1	C	222	GLU	CG-CD	6.53	1.61	1.51
1	E	222	GLU	CB-CG	5.03	1.61	1.52

All (14) bond angle outliers are listed below:

Mol	Chain	Res	Type	Atoms	Z	Observed(°)	Ideal(°)
1	B	142	LEU	CA-CB-CG	8.41	134.65	115.30
1	C	136	ASP	CB-CG-OD1	7.72	125.24	118.30
1	D	180	LEU	CA-CB-CG	7.54	132.63	115.30
1	A	54	PHE	N-CA-C	-7.52	90.70	111.00

Continued on next page...

Continued from previous page...

Mol	Chain	Res	Type	Atoms	Z	Observed(°)	Ideal(°)
1	A	55	ASP	C-N-CD	7.05	143.20	128.40
1	A	305	LEU	CA-CB-CG	6.18	129.52	115.30
1	D	180	LEU	CB-CG-CD2	-6.09	100.64	111.00
1	E	142	LEU	CA-CB-CG	5.82	128.69	115.30
1	E	170	LYS	CA-CB-CG	5.38	125.24	113.40
1	E	137	THR	N-CA-C	-5.36	96.52	111.00
1	A	180	LEU	CA-CB-CG	5.31	127.52	115.30
1	B	180	LEU	CA-CB-CG	5.21	127.29	115.30
1	B	142	LEU	CB-CG-CD2	5.08	119.63	111.00
1	E	213	TRP	CA-CB-CG	5.03	123.25	113.70

There are no chirality outliers.

All (3) planarity outliers are listed below:

Mol	Chain	Res	Type	Group
1	C	148	LYS	Peptide
1	C	149	VAL	Peptide
1	E	170	LYS	Peptide

5.2 Too-close contacts ⓘ

In the following table, the Non-H and H(model) columns list the number of non-hydrogen atoms and hydrogen atoms in the chain respectively. The H(added) column lists the number of hydrogen atoms added and optimized by MolProbity. The Clashes column lists the number of clashes within the asymmetric unit, whereas Symm-Clashes lists symmetry related clashes.

Mol	Chain	Non-H	H(model)	H(added)	Clashes	Symm-Clashes
1	A	2512	0	2522	77	1
1	B	2512	0	2522	72	0
1	C	2512	0	2522	90	1
1	D	2512	0	2522	74	0
1	E	2512	0	2522	81	0
2	A	12	0	23	1	0
2	B	12	0	23	1	0
2	C	12	0	23	1	0
2	D	12	0	23	1	0
2	E	12	0	23	1	0
3	A	1	0	0	0	0
4	A	5	0	0	1	0
4	B	10	0	0	1	0
4	D	5	0	0	3	0

Continued on next page...

Continued from previous page...

Mol	Chain	Non-H	H(model)	H(added)	Clashes	Symm-Clashes
4	E	5	0	0	1	0
All	All	12646	0	12725	383	1

The all-atom clashscore is defined as the number of clashes found per 1000 atoms (including hydrogen atoms). The all-atom clashscore for this structure is 15.

All (383) close contacts within the same asymmetric unit are listed below, sorted by their clash magnitude.

Atom-1	Atom-2	Interatomic distance (Å)	Clash overlap (Å)
1:C:23:TYR:HA	1:C:149:VAL:HG11	1.23	1.12
1:E:152:ASN:ND2	1:E:154:ASP:OD1	2.02	0.91
1:A:235:HIS:HE1	1:A:262:ILE:HB	1.37	0.88
1:D:148:LYS:O	1:D:150:GLY:N	2.07	0.88
1:A:133:ARG:NH2	1:A:178:ASP:OD1	2.08	0.87
1:D:293:ARG:NH1	4:D:402:SO4:O1	2.06	0.87
1:A:235:HIS:CE1	1:A:262:ILE:HB	2.10	0.85
1:E:142:LEU:HD13	1:E:170:LYS:HB3	1.63	0.80
1:A:148:LYS:O	1:A:150:GLY:N	2.14	0.80
1:B:14:GLU:HB3	1:B:15:PRO:HD2	1.61	0.80
1:E:38:LYS:HG2	1:E:109:ARG:HB3	1.63	0.79
1:E:30:LEU:HD12	1:E:157:LEU:HD21	1.65	0.78
1:B:148:LYS:O	1:B:150:GLY:N	2.16	0.78
1:B:239:ASN:HD22	1:B:263:TYR:HE2	1.31	0.77
1:C:289:ALA:O	1:C:293:ARG:HG3	1.87	0.74
1:C:23:TYR:HA	1:C:149:VAL:CG1	2.13	0.73
1:C:149:VAL:HG22	1:C:151:LYS:N	2.05	0.72
1:E:22:ILE:O	1:E:148:LYS:NZ	2.20	0.71
1:A:187:GLN:OE1	1:A:189:ARG:NH2	2.24	0.71
1:C:14:GLU:OE2	1:C:48:LYS:NZ	2.22	0.71
1:D:289:ALA:O	1:D:293:ARG:HG3	1.90	0.70
1:D:293:ARG:NH1	4:D:402:SO4:S	2.63	0.70
1:C:23:TYR:CE1	1:B:176:LEU:HD11	2.27	0.69
1:A:91:ASP:OD1	1:A:92:ILE:N	2.26	0.69
1:C:187:GLN:OE1	1:C:189:ARG:NH2	2.25	0.69
1:A:209:LEU:HD13	1:A:262:ILE:HG23	1.75	0.68
1:C:149:VAL:HG13	1:C:150:GLY:N	2.09	0.68
1:A:23:TYR:OH	1:A:152:ASN:OD1	2.13	0.67
1:A:56:PRO:C	1:A:58:ARG:H	1.95	0.67
1:C:63:VAL:HG22	1:C:95:SER:HA	1.77	0.67
1:D:152:ASN:HD21	1:D:154:ASP:HB2	1.60	0.67
1:C:52:LEU:HD21	1:C:71:ILE:HD12	1.77	0.67

Continued on next page...

Continued from previous page...

Atom-1	Atom-2	Interatomic distance (Å)	Clash overlap (Å)
1:B:8:PRO:O	1:B:51:ARG:NH2	2.29	0.66
1:C:23:TYR:CD1	1:C:149:VAL:HB	2.31	0.66
1:C:58:ARG:HG3	1:C:59:SER:N	2.11	0.66
1:A:289:ALA:O	1:A:293:ARG:HG3	1.97	0.65
1:D:38:LYS:HG2	1:D:109:ARG:HB3	1.78	0.65
1:E:8:PRO:HB2	1:E:51:ARG:HH12	1.60	0.65
1:B:148:LYS:C	1:B:150:GLY:H	2.01	0.65
1:A:179:ARG:HG2	1:A:179:ARG:HH11	1.63	0.64
1:B:146:LEU:O	1:B:149:VAL:HG12	1.98	0.63
1:B:38:LYS:HG2	1:B:109:ARG:HB3	1.79	0.63
1:C:152:ASN:HB3	1:C:155:VAL:HG23	1.80	0.63
1:A:150:GLY:HA2	1:A:165:PHE:HD2	1.65	0.62
1:C:237:ALA:HB2	2:C:401:LMT:H81	1.79	0.62
1:D:131:ILE:HD11	1:D:183:LYS:HE3	1.80	0.62
1:E:289:ALA:O	1:E:293:ARG:HG3	1.98	0.62
1:E:8:PRO:O	1:E:51:ARG:NH1	2.32	0.62
1:C:55:ASP:O	1:C:58:ARG:HG2	2.00	0.62
1:D:278:TYR:OH	4:E:402:SO4:O1	2.17	0.61
1:C:249:THR:HB	1:C:251:TYR:CE1	2.35	0.61
1:C:274:THR:HG21	1:D:214:THR:HB	1.83	0.61
1:D:122:ASP:OD1	1:D:192:ARG:NH1	2.34	0.61
1:C:23:TYR:HB3	1:C:42:PHE:HB2	1.82	0.61
1:C:8:PRO:O	1:C:51:ARG:NH2	2.29	0.61
1:A:16:LEU:HD11	1:A:47:TRP:HB2	1.82	0.61
1:C:30:LEU:HD12	1:C:157:LEU:HD21	1.81	0.61
1:C:254:TYR:HD1	1:C:314:PHE:CD2	2.19	0.60
1:D:305:LEU:O	1:D:309:ILE:HG23	2.01	0.60
1:E:170:LYS:HB2	1:E:171:PRO:HD2	1.84	0.60
1:A:56:PRO:HB2	1:A:58:ARG:HG2	1.84	0.59
1:C:118:ARG:O	1:C:121:PHE:N	2.32	0.59
1:B:133:ARG:HH12	1:B:177:GLU:HB2	1.67	0.59
1:B:284:GLN:OE1	1:B:287:ARG:NH2	2.35	0.59
1:A:278:TYR:OH	4:B:403:SO4:O4	2.18	0.59
1:C:218:SER:O	1:C:219:THR:HG22	2.03	0.59
1:D:10:PRO:HB3	1:D:49:ASP:OD1	2.03	0.59
1:B:146:LEU:HD12	1:B:147:GLU:HG3	1.83	0.59
1:B:167:ALA:HB2	1:B:186:TYR:CD2	2.37	0.59
1:C:148:LYS:NZ	1:C:186:TYR:CE2	2.71	0.59
1:C:66:TYR:CD2	1:C:71:ILE:HD11	2.38	0.58
1:D:209:LEU:O	1:D:212:SER:HB3	2.03	0.58
1:C:58:ARG:HG3	1:C:59:SER:H	1.66	0.58

Continued on next page...

Continued from previous page...

Atom-1	Atom-2	Interatomic distance (Å)	Clash overlap (Å)
1:D:11:ILE:O	1:D:11:ILE:HD12	2.03	0.58
1:B:35:GLU:OE2	1:B:114:LEU:N	2.32	0.58
1:C:258:ILE:O	1:C:262:ILE:HG12	2.03	0.58
1:D:148:LYS:HZ2	1:D:150:GLY:HA2	1.69	0.58
1:E:45:LEU:HB2	1:E:102:TYR:HB3	1.84	0.58
1:B:22:ILE:O	1:B:148:LYS:NZ	2.23	0.57
1:E:142:LEU:HD13	1:E:170:LYS:HD3	1.84	0.57
1:B:249:THR:HB	1:B:251:TYR:CE1	2.39	0.57
1:D:293:ARG:HA	1:D:296:ARG:HD2	1.86	0.57
1:B:293:ARG:HA	1:B:296:ARG:HD2	1.87	0.57
1:D:177:GLU:OE1	1:E:147:GLU:HG2	2.05	0.57
1:C:135:VAL:O	1:C:137:THR:N	2.29	0.57
1:A:24:LEU:HB2	1:A:151:LYS:HA	1.87	0.57
1:C:83:ASN:OD1	1:C:83:ASN:N	2.37	0.57
1:C:209:LEU:O	1:C:212:SER:HB3	2.05	0.56
1:D:14:GLU:CG	1:D:15:PRO:HD2	2.35	0.56
1:E:176:LEU:HD23	1:E:177:GLU:HG3	1.87	0.56
1:E:149:VAL:HG12	1:E:149:VAL:O	2.06	0.56
1:A:268:VAL:HG12	1:A:299:PHE:HZ	1.71	0.56
1:C:258:ILE:HD13	1:C:310:LEU:HD23	1.87	0.56
1:E:134:SER:HB3	1:E:138:ARG:HA	1.88	0.56
1:B:141:VAL:O	1:B:142:LEU:HD23	2.06	0.56
1:E:170:LYS:HB2	1:E:171:PRO:CD	2.35	0.56
1:C:144:VAL:HG13	1:C:147:GLU:HB2	1.87	0.56
1:C:163:GLU:OE2	1:C:191:SER:HB3	2.06	0.55
1:A:148:LYS:C	1:A:150:GLY:H	2.10	0.55
1:E:52:LEU:HB3	1:E:94:VAL:HG11	1.88	0.55
1:E:141:VAL:HG23	1:E:184:LEU:HG	1.89	0.55
1:B:141:VAL:HG23	1:B:184:LEU:HG	1.88	0.55
1:E:249:THR:HB	1:E:251:TYR:CE1	2.41	0.55
1:E:81:VAL:HG23	1:E:110:VAL:HG12	1.89	0.55
1:A:63:VAL:HG23	1:A:94:VAL:O	2.07	0.55
1:D:240:ILE:HD12	2:D:401:LMT:H72	1.89	0.55
1:A:258:ILE:O	1:A:262:ILE:HG12	2.07	0.54
1:C:41:ALA:HB3	1:C:106:PHE:CZ	2.43	0.54
1:B:145:ASP:HA	1:B:148:LYS:HB3	1.88	0.54
1:C:198:ILE:HG12	1:C:202:ILE:HD12	1.89	0.54
1:C:209:LEU:HD13	1:C:262:ILE:HG23	1.90	0.54
1:E:93:SER:HB2	1:E:101:GLN:HB2	1.90	0.54
1:B:239:ASN:ND2	1:B:263:TYR:HE2	2.03	0.54
1:E:148:LYS:O	1:E:150:GLY:N	2.40	0.54

Continued on next page...

Continued from previous page...

Atom-1	Atom-2	Interatomic distance (Å)	Clash overlap (Å)
1:E:30:LEU:HD13	1:E:160:TRP:CE2	2.42	0.54
1:A:288:ALA:O	1:A:292:THR:HG22	2.08	0.54
1:B:64:LYS:HG2	1:B:65:THR:N	2.23	0.54
1:A:55:ASP:CB	1:A:96:PRO:HB3	2.38	0.54
1:A:56:PRO:C	1:A:58:ARG:N	2.62	0.54
1:D:276:GLN:OE1	1:D:292:THR:HG21	2.07	0.54
1:C:10:PRO:HB3	1:C:49:ASP:OD1	2.08	0.53
1:A:36:THR:HG21	1:A:109:ARG:HH21	1.73	0.53
1:D:14:GLU:HG3	1:D:15:PRO:HD2	1.90	0.53
1:E:68:PRO:HA	1:E:73:ILE:HD11	1.90	0.53
1:A:94:VAL:HG13	1:A:100:VAL:HG22	1.90	0.53
1:A:209:LEU:O	1:A:212:SER:HB3	2.07	0.53
1:B:66:TYR:HB3	1:B:70:ALA:HB3	1.91	0.53
1:D:148:LYS:NZ	1:D:150:GLY:HA2	2.23	0.53
1:B:162:ILE:HG23	1:B:188:LEU:HD11	1.90	0.53
1:D:209:LEU:HD13	1:D:262:ILE:HG23	1.91	0.53
1:C:198:ILE:HB	1:C:199:PRO:HD3	1.92	0.52
1:B:148:LYS:NZ	1:B:150:GLY:O	2.42	0.52
1:E:78:PHE:CD2	1:E:85:ARG:HD2	2.44	0.52
1:C:284:GLN:HE21	1:C:287:ARG:HG3	1.75	0.52
1:C:35:GLU:OE2	1:C:114:LEU:N	2.37	0.52
1:E:167:ALA:HB2	1:E:186:TYR:CD2	2.44	0.52
1:E:119:TYR:CE2	1:E:246:LEU:HD11	2.45	0.52
1:B:72:TRP:CZ3	1:B:74:PRO:HG3	2.45	0.52
1:D:52:LEU:HD21	1:D:71:ILE:HD12	1.92	0.52
1:D:131:ILE:HG21	1:D:181:GLU:OE1	2.10	0.52
1:A:277:HIS:O	1:A:281:VAL:HG23	2.10	0.52
1:C:240:ILE:O	1:C:244:THR:HG23	2.10	0.52
1:D:144:VAL:HG13	1:D:147:GLU:HB2	1.92	0.52
1:B:258:ILE:O	1:B:262:ILE:HG12	2.10	0.51
1:B:30:LEU:HD12	1:B:157:LEU:HD21	1.93	0.51
1:B:95:SER:OG	1:B:96:PRO:HD2	2.10	0.51
1:E:55:ASP:OD1	1:E:56:PRO:HD2	2.09	0.51
1:A:205:MET:O	1:A:208:ILE:HG13	2.10	0.51
1:B:145:ASP:N	1:B:145:ASP:OD1	2.42	0.51
1:E:185:ASP:OD2	1:E:187:GLN:NE2	2.35	0.51
1:B:52:LEU:HD11	1:B:71:ILE:HD12	1.91	0.51
1:C:79:VAL:HG22	1:C:131:ILE:HG12	1.91	0.51
1:C:293:ARG:HA	1:C:296:ARG:HD2	1.93	0.51
1:D:32:ASP:OD1	1:D:192:ARG:NH2	2.42	0.51
1:B:278:TYR:O	1:B:282:GLU:HB2	2.11	0.51

Continued on next page...

Continued from previous page...

Atom-1	Atom-2	Interatomic distance (Å)	Clash overlap (Å)
1:A:152:ASN:HB3	1:A:154:ASP:OD1	2.10	0.51
1:E:37:PHE:CE1	1:E:126:LEU:HB3	2.46	0.51
1:E:240:ILE:O	1:E:244:THR:HG23	2.10	0.50
1:B:23:TYR:HB3	1:B:42:PHE:HB2	1.93	0.50
1:A:198:ILE:HB	1:A:199:PRO:HD3	1.92	0.50
1:D:223:ALA:O	1:D:226:THR:HB	2.12	0.50
1:E:124:GLN:HB2	1:E:190:ILE:HD11	1.94	0.50
1:A:79:VAL:HG21	1:A:183:LYS:HE2	1.94	0.50
1:B:209:LEU:O	1:B:212:SER:HB3	2.11	0.50
1:B:209:LEU:HD13	1:B:262:ILE:HG23	1.93	0.50
1:B:45:LEU:HB2	1:B:102:TYR:HB3	1.94	0.50
1:B:64:LYS:HG2	1:B:65:THR:H	1.76	0.50
1:D:257:ALA:HB1	1:D:310:LEU:HD21	1.94	0.50
1:E:179:ARG:HH11	1:E:179:ARG:HG2	1.77	0.50
1:E:95:SER:HB2	1:E:99:THR:HB	1.92	0.50
1:E:91:ASP:OD1	1:E:92:ILE:N	2.45	0.50
1:A:293:ARG:NE	4:A:403:SO4:O3	2.42	0.49
1:D:138:ARG:HG3	1:D:138:ARG:HH11	1.78	0.49
1:C:277:HIS:O	1:C:281:VAL:HG13	2.12	0.49
1:A:239:ASN:HA	1:A:259:ILE:HD13	1.95	0.49
1:B:149:VAL:HG23	1:B:149:VAL:O	2.13	0.49
1:B:10:PRO:HD3	1:B:72:TRP:CE3	2.47	0.49
1:D:91:ASP:OD1	1:D:92:ILE:N	2.45	0.49
1:A:235:HIS:CD2	1:A:235:HIS:O	2.66	0.49
1:A:11:ILE:HG13	1:A:51:ARG:HG2	1.95	0.49
1:A:211:ILE:HG12	1:E:270:VAL:HG11	1.93	0.49
1:C:148:LYS:HZ3	1:C:167:ALA:CB	2.25	0.49
1:D:268:VAL:HG12	1:D:299:PHE:CZ	2.48	0.49
1:E:115:ASP:O	1:E:124:GLN:NE2	2.39	0.49
1:D:272:GLU:OE2	1:D:292:THR:HG22	2.12	0.48
1:C:52:LEU:HB3	1:C:94:VAL:HG11	1.95	0.48
1:A:133:ARG:HD3	1:B:90:VAL:HG11	1.94	0.48
1:C:148:LYS:HE3	1:C:148:LYS:HB2	1.37	0.48
1:D:52:LEU:HB3	1:D:94:VAL:HG11	1.96	0.48
1:E:47:TRP:CH2	1:E:73:ILE:HG23	2.47	0.48
1:C:38:LYS:HG2	1:C:109:ARG:HB3	1.96	0.48
1:C:264:LEU:O	1:C:268:VAL:HG13	2.14	0.48
1:E:235:HIS:HD1	1:E:263:TYR:HE1	1.59	0.48
1:A:57:VAL:HG22	1:A:62:ARG:HA	1.94	0.48
1:B:52:LEU:HD11	1:B:71:ILE:HG23	1.95	0.48
1:D:268:VAL:HG12	1:D:299:PHE:HZ	1.78	0.48

Continued on next page...

Continued from previous page...

Atom-1	Atom-2	Interatomic distance (Å)	Clash overlap (Å)
1:E:118:ARG:O	1:E:121:PHE:N	2.40	0.48
1:E:23:TYR:HB3	1:E:42:PHE:HB2	1.95	0.48
1:E:184:LEU:HA	1:E:184:LEU:HD23	1.65	0.48
1:B:85:ARG:HB3	1:B:108:ALA:HB2	1.96	0.48
1:D:184:LEU:HA	1:D:184:LEU:HD23	1.63	0.48
1:D:9:PRO:HB3	1:D:72:TRP:CZ2	2.49	0.48
1:A:208:ILE:HD12	1:A:266:TYR:OH	2.14	0.47
1:A:288:ALA:O	1:A:291:ILE:HG22	2.15	0.47
1:D:271:ILE:O	1:D:275:VAL:HG13	2.14	0.47
1:B:14:GLU:CB	1:B:15:PRO:HD2	2.38	0.47
1:A:178:ASP:OD1	1:A:179:ARG:HG3	2.15	0.47
1:B:36:THR:HG21	1:B:109:ARG:HH21	1.77	0.47
1:A:58:ARG:HA	1:A:58:ARG:HD3	1.59	0.47
1:B:152:ASN:HB3	1:B:155:VAL:HG23	1.95	0.47
1:B:32:ASP:OD1	1:B:32:ASP:N	2.46	0.47
1:C:184:LEU:HD23	1:C:184:LEU:HA	1.71	0.47
1:C:150:GLY:O	1:C:165:PHE:HD2	1.98	0.47
1:E:313:LEU:HA	1:E:313:LEU:HD12	1.72	0.47
1:D:293:ARG:NH1	4:D:402:SO4:O4	2.48	0.47
1:E:22:ILE:HD11	1:E:130:LEU:HD11	1.96	0.47
1:C:136:ASP:C	1:C:136:ASP:OD1	2.53	0.47
1:C:152:ASN:OD1	1:C:153:ASP:N	2.47	0.47
1:D:232:LEU:HD13	1:D:266:TYR:CG	2.50	0.47
1:C:148:LYS:NZ	1:C:186:TYR:CZ	2.82	0.47
1:C:80:ASN:HA	1:D:26:GLU:OE2	2.15	0.47
1:E:261:MET:HE1	1:E:303:PHE:CE1	2.50	0.47
1:E:66:TYR:HB3	1:E:70:ALA:HB3	1.97	0.47
1:E:120:PRO:HD3	1:E:255:THR:HG21	1.95	0.47
1:D:78:PHE:CE2	1:D:85:ARG:HD3	2.50	0.47
1:B:37:PHE:CE1	1:B:126:LEU:HD13	2.50	0.46
1:E:14:GLU:OE1	1:E:15:PRO:HD2	2.16	0.46
1:A:134:SER:HB3	1:A:138:ARG:HD3	1.97	0.46
1:B:264:LEU:O	1:B:268:VAL:HG13	2.15	0.46
1:D:170:LYS:HG3	1:D:171:PRO:HD2	1.98	0.46
1:E:223:ALA:O	1:E:226:THR:HB	2.16	0.46
1:B:198:ILE:HB	1:B:199:PRO:HD3	1.98	0.46
1:A:309:ILE:O	1:A:313:LEU:HB2	2.15	0.46
1:C:24:LEU:HB2	1:C:151:LYS:HA	1.96	0.46
1:D:160:TRP:CE3	1:D:190:ILE:HD12	2.50	0.46
1:A:268:VAL:HG12	1:A:299:PHE:CZ	2.50	0.46
1:D:95:SER:OG	1:D:96:PRO:HD2	2.15	0.46

Continued on next page...

Continued from previous page...

Atom-1	Atom-2	Interatomic distance (Å)	Clash overlap (Å)
1:C:153:ASP:N	1:C:153:ASP:OD2	2.49	0.46
1:E:209:LEU:O	1:E:212:SER:HB3	2.15	0.46
1:B:291:ILE:O	1:B:294:ALA:HB3	2.15	0.46
1:A:240:ILE:O	1:A:244:THR:HG23	2.16	0.46
1:A:293:ARG:HA	1:A:296:ARG:HD2	1.98	0.46
1:B:277:HIS:O	1:B:281:VAL:HG13	2.16	0.46
1:E:118:ARG:HD3	1:E:315:PHE:CD2	2.51	0.46
1:E:8:PRO:HB2	1:E:51:ARG:NH1	2.30	0.46
1:B:310:LEU:HD12	1:B:310:LEU:HA	1.77	0.45
1:C:78:PHE:CE2	1:C:85:ARG:HD3	2.50	0.45
1:C:30:LEU:HB2	1:C:157:LEU:HD11	1.98	0.45
1:D:167:ALA:HB2	1:D:186:TYR:CD2	2.52	0.45
1:E:209:LEU:HD13	1:E:262:ILE:HG23	1.97	0.45
1:B:205:MET:O	1:B:208:ILE:HG13	2.16	0.45
1:C:263:TYR:CE2	1:D:204:PRO:HG3	2.50	0.45
1:D:138:ARG:CG	1:D:138:ARG:HH11	2.29	0.45
1:E:135:VAL:HB	1:E:136:ASP:H	1.67	0.45
1:B:184:LEU:HA	1:B:184:LEU:HD23	1.72	0.45
1:C:91:ASP:OD2	1:B:179:ARG:NH1	2.49	0.45
1:C:94:VAL:HG13	1:C:100:VAL:HG22	1.98	0.45
1:D:46:SER:HA	1:D:100:VAL:O	2.17	0.45
1:A:179:ARG:HG2	1:A:179:ARG:NH1	2.29	0.45
1:C:141:VAL:O	1:C:142:LEU:HG	2.16	0.45
1:D:81:VAL:CG2	1:D:108:ALA:HB1	2.46	0.45
1:D:263:TYR:CE2	1:E:204:PRO:HG3	2.52	0.45
1:A:54:PHE:O	1:A:96:PRO:HA	2.17	0.45
1:C:66:TYR:HD2	1:C:71:ILE:HD11	1.79	0.45
1:D:16:LEU:HD11	1:D:47:TRP:HB2	1.98	0.45
1:D:9:PRO:HA	1:D:72:TRP:CE2	2.51	0.45
1:A:52:LEU:HB3	1:A:94:VAL:HG11	1.99	0.45
1:E:125:THR:HG22	1:E:127:HIS:CD2	2.52	0.45
1:B:16:LEU:HD11	1:B:47:TRP:HB2	1.99	0.45
1:D:77:ARG:NH2	1:E:90:VAL:HG13	2.32	0.45
1:A:52:LEU:HD21	1:A:71:ILE:HD12	1.98	0.45
1:C:202:ILE:O	1:C:206:LEU:HD13	2.17	0.45
1:D:278:TYR:O	1:D:282:GLU:HB2	2.17	0.45
1:D:292:THR:O	1:D:296:ARG:HG3	2.17	0.45
1:A:121:PHE:HB2	1:A:315:PHE:HE2	1.83	0.44
1:C:309:ILE:O	1:C:313:LEU:HB2	2.16	0.44
1:D:22:ILE:HD11	1:D:130:LEU:HD11	1.98	0.44
1:A:55:ASP:N	1:A:55:ASP:OD1	2.50	0.44

Continued on next page...

Continued from previous page...

Atom-1	Atom-2	Interatomic distance (Å)	Clash overlap (Å)
1:D:306:ALA:O	1:D:309:ILE:HG12	2.16	0.44
1:D:55:ASP:HB2	1:D:58:ARG:HH21	1.82	0.44
1:B:133:ARG:NH1	1:B:177:GLU:HB2	2.29	0.44
1:C:315:PHE:CD1	1:C:315:PHE:N	2.85	0.44
1:C:16:LEU:HD11	1:C:47:TRP:HB2	1.98	0.44
1:C:148:LYS:O	1:C:148:LYS:CG	2.65	0.44
1:C:254:TYR:HA	1:C:314:PHE:CE2	2.52	0.44
1:C:48:LYS:HZ2	1:C:50:ARG:NH2	2.15	0.44
1:A:138:ARG:HA	1:A:138:ARG:HD3	1.66	0.44
1:C:119:TYR:CE2	1:C:246:LEU:HD11	2.52	0.44
1:E:142:LEU:HD12	1:E:143:ALA:H	1.83	0.43
1:E:233:ALA:HB1	2:E:401:LMT:H22	1.98	0.43
1:A:133:ARG:NH1	1:A:181:GLU:OE2	2.46	0.43
1:A:55:ASP:HB3	1:A:96:PRO:HB3	2.00	0.43
1:C:122:ASP:OD2	1:C:124:GLN:NE2	2.42	0.43
1:E:125:THR:OG1	1:E:189:ARG:HG2	2.18	0.43
1:A:176:LEU:HA	1:A:176:LEU:HD12	1.75	0.43
2:A:402:LMT:H61	2:B:402:LMT:H71	1.99	0.43
1:A:30:LEU:HD12	1:A:157:LEU:HD21	2.01	0.43
1:B:119:TYR:CE2	1:B:246:LEU:HD11	2.54	0.43
1:B:80:ASN:HB2	1:B:111:LEU:O	2.18	0.43
1:E:81:VAL:CG2	1:E:110:VAL:HG12	2.49	0.43
1:E:282:GLU:O	1:E:284:GLN:HG3	2.19	0.43
1:B:148:LYS:C	1:B:150:GLY:N	2.69	0.43
1:B:71:ILE:HB	1:B:73:ILE:HD11	2.01	0.43
1:C:29:SER:HB2	1:C:38:LYS:HD2	2.00	0.43
1:D:129:TYR:HA	1:D:184:LEU:O	2.19	0.43
1:C:43:LEU:HB3	1:C:104:GLU:CG	2.49	0.43
1:E:148:LYS:HD2	1:E:148:LYS:HA	1.69	0.43
1:B:148:LYS:HZ2	1:B:150:GLY:CA	2.32	0.43
1:A:31:ASP:HB3	1:A:34:ALA:HB3	2.00	0.42
1:B:120:PRO:HD3	1:B:255:THR:HG21	2.00	0.42
1:B:284:GLN:N	1:B:285:PRO:HD3	2.34	0.42
1:D:310:LEU:HD12	1:D:310:LEU:HA	1.76	0.42
1:E:279:LEU:HA	1:E:279:LEU:HD23	1.74	0.42
1:D:263:TYR:HE2	1:E:204:PRO:HG3	1.84	0.42
1:E:258:ILE:O	1:E:262:ILE:HG12	2.19	0.42
1:A:235:HIS:CE1	1:A:262:ILE:CB	2.93	0.42
1:C:149:VAL:HG22	1:C:150:GLY:C	2.40	0.42
1:D:134:SER:HB3	1:D:138:ARG:HA	2.02	0.42
1:D:207:PHE:O	1:D:211:ILE:HG13	2.20	0.42

Continued on next page...

Continued from previous page...

Atom-1	Atom-2	Interatomic distance (Å)	Clash overlap (Å)
1:E:47:TRP:HH2	1:E:73:ILE:HG23	1.83	0.42
1:A:38:LYS:HG2	1:A:109:ARG:HB3	2.01	0.42
1:A:310:LEU:HA	1:A:310:LEU:HD12	1.73	0.42
1:B:222:GLU:CD	1:B:222:GLU:H	2.22	0.42
1:B:254:TYR:CD1	1:B:315:PHE:HE1	2.37	0.42
1:E:66:TYR:CD1	1:E:71:ILE:HD11	2.54	0.42
1:B:95:SER:HB3	1:B:99:THR:HB	2.01	0.42
1:E:37:PHE:CD1	1:E:126:LEU:HD13	2.55	0.42
1:C:257:ALA:HB1	1:C:310:LEU:HD21	2.01	0.42
1:E:198:ILE:HB	1:E:199:PRO:HD3	2.01	0.42
1:B:43:LEU:HD23	1:B:104:GLU:OE1	2.20	0.42
1:D:45:LEU:HB2	1:D:102:TYR:HB3	2.02	0.42
1:D:66:TYR:CE2	1:D:94:VAL:HG21	2.54	0.42
1:E:315:PHE:N	1:E:315:PHE:CD1	2.87	0.42
1:E:52:LEU:HD21	1:E:71:ILE:HD12	2.02	0.42
1:A:263:TYR:HD1	1:A:263:TYR:HA	1.71	0.42
1:C:62:ARG:HG2	1:C:62:ARG:H	1.38	0.42
1:D:119:TYR:CE2	1:D:246:LEU:HD11	2.55	0.42
1:E:261:MET:HE2	1:E:261:MET:HB3	2.00	0.42
1:D:133:ARG:HG3	1:D:181:GLU:HG2	2.02	0.42
1:A:211:ILE:HD13	1:E:270:VAL:HG21	2.01	0.41
1:A:235:HIS:HD2	1:A:235:HIS:O	2.02	0.41
1:C:173:ASN:HA	1:C:181:GLU:O	2.21	0.41
1:E:264:LEU:HD23	1:E:264:LEU:HA	1.79	0.41
1:C:297:ILE:HA	1:C:297:ILE:HD13	1.88	0.41
1:D:277:HIS:O	1:D:281:VAL:HG13	2.19	0.41
1:D:120:PRO:HD3	1:D:255:THR:HG21	2.01	0.41
1:E:43:LEU:HB3	1:E:104:GLU:CG	2.51	0.41
1:A:217:TRP:CZ2	1:A:296:ARG:HB3	2.55	0.41
1:A:95:SER:HB3	1:A:99:THR:HB	2.02	0.41
1:C:279:LEU:HB2	1:C:288:ALA:HB2	2.01	0.41
1:D:133:ARG:NH1	1:D:176:LEU:O	2.46	0.41
1:E:162:ILE:HG23	1:E:188:LEU:HD11	2.02	0.41
1:A:243:GLU:OE2	1:A:248:LYS:NZ	2.47	0.41
1:C:249:THR:HB	1:C:251:TYR:CZ	2.55	0.41
1:A:150:GLY:HA2	1:A:165:PHE:CD2	2.50	0.41
1:A:184:LEU:HD23	1:A:184:LEU:HA	1.82	0.41
1:A:254:TYR:CD1	1:A:315:PHE:HE1	2.39	0.41
1:C:91:ASP:OD1	1:C:92:ILE:N	2.54	0.41
1:A:66:TYR:CD2	1:A:94:VAL:HG21	2.56	0.41
1:A:206:LEU:HD23	1:A:206:LEU:HA	1.69	0.41

Continued on next page...

Continued from previous page...

Atom-1	Atom-2	Interatomic distance (Å)	Clash overlap (Å)
1:B:48:LYS:HE2	1:B:48:LYS:HB2	1.81	0.41
1:C:310:LEU:HA	1:C:310:LEU:HD12	1.85	0.41
1:D:81:VAL:HG21	1:D:108:ALA:HB1	2.03	0.41
1:A:146:LEU:O	1:A:149:VAL:HG23	2.21	0.40
1:B:120:PRO:HD3	1:B:255:THR:CG2	2.52	0.40
1:C:186:TYR:N	1:C:186:TYR:CD1	2.89	0.40
1:E:200:ASN:O	1:E:201:ILE:HD13	2.21	0.40
1:E:217:TRP:CZ2	1:E:296:ARG:HB3	2.56	0.40
1:D:141:VAL:O	1:D:142:LEU:HG	2.21	0.40
1:E:46:SER:HA	1:E:100:VAL:O	2.21	0.40
1:E:258:ILE:HD13	1:E:310:LEU:HD23	2.03	0.40
1:A:46:SER:HA	1:A:100:VAL:O	2.20	0.40
1:A:57:VAL:HG12	1:A:58:ARG:CZ	2.51	0.40
1:B:176:LEU:HA	1:B:176:LEU:HD12	1.75	0.40
1:B:203:LEU:HA	1:B:203:LEU:HD23	1.82	0.40
1:B:31:ASP:O	1:B:35:GLU:N	2.55	0.40
1:C:46:SER:HA	1:C:100:VAL:O	2.21	0.40
1:C:19:ASN:HA	1:C:142:LEU:O	2.21	0.40
1:C:283:SER:C	1:C:285:PRO:HD3	2.41	0.40
1:D:134:SER:HB3	1:D:138:ARG:HG2	2.02	0.40
1:C:133:ARG:HG3	1:C:181:GLU:HG2	2.02	0.40
1:C:211:ILE:O	1:C:214:THR:HB	2.21	0.40
1:A:130:LEU:O	1:A:183:LYS:HA	2.22	0.40

All (1) symmetry-related close contacts are listed below. The label for Atom-2 includes the symmetry operator and encoded unit-cell translations to be applied.

Atom-1	Atom-2	Interatomic distance (Å)	Clash overlap (Å)
1:C:153:ASP:OD1	1:A:62:ARG:NH1[4_5410]	2.17	0.03

5.3 Torsion angles ⓘ

5.3.1 Protein backbone ⓘ

In the following table, the Percentiles column shows the percent Ramachandran outliers of the chain as a percentile score with respect to all X-ray entries followed by that with respect to entries of similar resolution.

The Analysed column shows the number of residues for which the backbone conformation was analysed, and the total number of residues.

Mol	Chain	Analysed	Favoured	Allowed	Outliers	Percentiles	
1	A	308/310 (99%)	294 (96%)	8 (3%)	6 (2%)	9	42
1	B	308/310 (99%)	298 (97%)	7 (2%)	3 (1%)	18	56
1	C	308/310 (99%)	294 (96%)	11 (4%)	3 (1%)	18	56
1	D	308/310 (99%)	298 (97%)	8 (3%)	2 (1%)	28	66
1	E	308/310 (99%)	300 (97%)	6 (2%)	2 (1%)	28	66
All	All	1540/1550 (99%)	1484 (96%)	40 (3%)	16 (1%)	18	56

All (16) Ramachandran outliers are listed below:

Mol	Chain	Res	Type
1	C	149	VAL
1	A	135	VAL
1	A	149	VAL
1	B	15	PRO
1	B	135	VAL
1	B	149	VAL
1	D	135	VAL
1	D	149	VAL
1	E	135	VAL
1	C	136	ASP
1	A	153	ASP
1	A	55	ASP
1	E	149	VAL
1	A	11	ILE
1	C	150	GLY
1	A	57	VAL

5.3.2 Protein sidechains ⓘ

In the following table, the Percentiles column shows the percent sidechain outliers of the chain as a percentile score with respect to all X-ray entries followed by that with respect to entries of similar resolution.

The Analysed column shows the number of residues for which the sidechain conformation was analysed, and the total number of residues.

Mol	Chain	Analysed	Rotameric	Outliers	Percentiles	
1	A	277/277 (100%)	268 (97%)	9 (3%)	44	76
1	B	277/277 (100%)	268 (97%)	9 (3%)	44	76
1	C	277/277 (100%)	266 (96%)	11 (4%)	36	70

Continued on next page...

Continued from previous page...

Mol	Chain	Analysed	Rotameric	Outliers	Percentiles	
1	D	277/277 (100%)	266 (96%)	11 (4%)	36	70
1	E	277/277 (100%)	274 (99%)	3 (1%)	78	89
All	All	1385/1385 (100%)	1342 (97%)	43 (3%)	45	76

All (43) residues with a non-rotameric sidechain are listed below:

Mol	Chain	Res	Type
1	C	46	SER
1	C	62	ARG
1	C	86	ASP
1	C	97	ASP
1	C	110	VAL
1	C	136	ASP
1	C	148	LYS
1	C	153	ASP
1	C	214	THR
1	C	222	GLU
1	C	276	GLN
1	A	46	SER
1	A	55	ASP
1	A	57	VAL
1	A	62	ARG
1	A	86	ASP
1	A	125	THR
1	A	148	LYS
1	A	222	GLU
1	A	292	THR
1	B	17	THR
1	B	32	ASP
1	B	83	ASN
1	B	131	ILE
1	B	142	LEU
1	B	145	ASP
1	B	149	VAL
1	B	169	VAL
1	B	317	PHE
1	D	57	VAL
1	D	73	ILE
1	D	81	VAL
1	D	90	VAL
1	D	93	SER

Continued on next page...

Continued from previous page...

Mol	Chain	Res	Type
1	D	110	VAL
1	D	131	ILE
1	D	148	LYS
1	D	273	VAL
1	D	280	LYS
1	D	305	LEU
1	E	85	ARG
1	E	135	VAL
1	E	148	LYS

Some sidechains can be flipped to improve hydrogen bonding and reduce clashes. All (2) such sidechains are listed below:

Mol	Chain	Res	Type
1	C	284	GLN
1	A	235	HIS

5.3.3 RNA [i](#)

There are no RNA molecules in this entry.

5.4 Non-standard residues in protein, DNA, RNA chains [i](#)

There are no non-standard protein/DNA/RNA residues in this entry.

5.5 Carbohydrates [i](#)

There are no carbohydrates in this entry.

5.6 Ligand geometry [i](#)

Of 11 ligands modelled in this entry, 1 is monoatomic - leaving 10 for Mogul analysis.

In the following table, the Counts columns list the number of bonds (or angles) for which Mogul statistics could be retrieved, the number of bonds (or angles) that are observed in the model and the number of bonds (or angles) that are defined in the Chemical Component Dictionary. The Link column lists molecule types, if any, to which the group is linked. The Z score for a bond length (or angle) is the number of standard deviations the observed value is removed from the expected value. A bond length (or angle) with $|Z| > 2$ is considered an outlier worth inspection. RMSZ is the root-mean-square of all Z scores of the bond lengths (or angles).

Mol	Type	Chain	Res	Link	Bond lengths			Bond angles		
					Counts	RMSZ	# Z > 2	Counts	RMSZ	# Z > 2
2	LMT	A	402	-	11,11,36	0.16	0	10,10,47	0.79	0
4	SO4	A	403	-	4,4,4	0.24	0	6,6,6	0.14	0
4	SO4	B	401	-	4,4,4	0.25	0	6,6,6	0.43	0
2	LMT	B	402	-	11,11,36	0.19	0	10,10,47	0.62	0
4	SO4	B	403	-	4,4,4	0.26	0	6,6,6	0.21	0
2	LMT	C	401	-	11,11,36	0.13	0	10,10,47	0.86	0
2	LMT	D	401	-	11,11,36	0.21	0	10,10,47	0.66	0
4	SO4	D	402	-	4,4,4	0.17	0	6,6,6	0.30	0
2	LMT	E	401	-	11,11,36	0.17	0	10,10,47	0.64	0
4	SO4	E	402	-	4,4,4	0.18	0	6,6,6	0.40	0

In the following table, the Chirals column lists the number of chiral outliers, the number of chiral centers analysed, the number of these observed in the model and the number defined in the Chemical Component Dictionary. Similar counts are reported in the Torsion and Rings columns. '-' means no outliers of that kind were identified.

Mol	Type	Chain	Res	Link	Chirals	Torsions	Rings
2	LMT	A	402	-	-	0/9/9/61	0/0/0/2
4	SO4	A	403	-	-	0/0/0/0	0/0/0/0
4	SO4	B	401	-	-	0/0/0/0	0/0/0/0
2	LMT	B	402	-	-	0/9/9/61	0/0/0/2
4	SO4	B	403	-	-	0/0/0/0	0/0/0/0
2	LMT	C	401	-	-	0/9/9/61	0/0/0/2
2	LMT	D	401	-	-	0/9/9/61	0/0/0/2
4	SO4	D	402	-	-	0/0/0/0	0/0/0/0
2	LMT	E	401	-	-	0/9/9/61	0/0/0/2
4	SO4	E	402	-	-	0/0/0/0	0/0/0/0

There are no bond length outliers.

There are no bond angle outliers.

There are no chirality outliers.

There are no torsion outliers.

There are no ring outliers.

9 monomers are involved in 10 short contacts:

Mol	Chain	Res	Type	Clashes	Symm-Clashes
2	A	402	LMT	1	0
4	A	403	SO4	1	0
2	B	402	LMT	1	0
4	B	403	SO4	1	0

Continued on next page...

Continued from previous page...

Mol	Chain	Res	Type	Clashes	Symm-Clashes
2	C	401	LMT	1	0
2	D	401	LMT	1	0
4	D	402	SO4	3	0
2	E	401	LMT	1	0
4	E	402	SO4	1	0

5.7 Other polymers [i](#)

There are no such residues in this entry.

5.8 Polymer linkage issues [i](#)

There are no chain breaks in this entry.

6 Fit of model and data

6.1 Protein, DNA and RNA chains

In the following table, the column labelled ‘#RSRZ> 2’ contains the number (and percentage) of RSRZ outliers, followed by percent RSRZ outliers for the chain as percentile scores relative to all X-ray entries and entries of similar resolution. The OWAB column contains the minimum, median, 95th percentile and maximum values of the occupancy-weighted average B-factor per residue. The column labelled ‘Q< 0.9’ lists the number of (and percentage) of residues with an average occupancy less than 0.9.

Mol	Chain	Analysed	<RSRZ>	#RSRZ>2	OWAB(Å ²)	Q<0.9
1	A	310/310 (100%)	-0.17	8 (2%) 56 57	48, 65, 103, 137	0
1	B	310/310 (100%)	-0.24	3 (0%) 82 84	50, 66, 105, 129	0
1	C	310/310 (100%)	-0.22	6 (1%) 67 68	43, 62, 93, 123	0
1	D	310/310 (100%)	-0.33	2 (0%) 89 90	47, 63, 84, 113	0
1	E	310/310 (100%)	-0.23	7 (2%) 61 61	49, 62, 93, 114	0
All	All	1550/1550 (100%)	-0.24	26 (1%) 70 71	43, 64, 97, 137	0

All (26) RSRZ outliers are listed below:

Mol	Chain	Res	Type	RSRZ
1	C	317	PHE	6.9
1	A	59	SER	5.5
1	E	317	PHE	4.6
1	A	55	ASP	3.9
1	E	146	LEU	3.8
1	D	149	VAL	3.3
1	D	178	ASP	3.3
1	B	317	PHE	2.9
1	E	149	VAL	2.8
1	A	137	THR	2.7
1	C	139	ASN	2.7
1	E	145	ASP	2.6
1	C	60	GLY	2.6
1	B	149	VAL	2.5
1	E	62	ARG	2.4
1	A	66	TYR	2.4
1	E	316	GLY	2.4
1	C	66	TYR	2.3
1	B	287	ARG	2.3
1	C	61	VAL	2.2

Continued on next page...

Continued from previous page...

Mol	Chain	Res	Type	RSRZ
1	E	59	SER	2.2
1	C	58	ARG	2.2
1	A	57	VAL	2.2
1	A	64	LYS	2.1
1	A	60	GLY	2.1
1	A	149	VAL	2.0

6.2 Non-standard residues in protein, DNA, RNA chains [i](#)

There are no non-standard protein/DNA/RNA residues in this entry.

6.3 Carbohydrates [i](#)

There are no carbohydrates in this entry.

6.4 Ligands [i](#)

In the following table, the Atoms column lists the number of modelled atoms in the group and the number defined in the chemical component dictionary. LLDF column lists the quality of electron density of the group with respect to its neighbouring residues in protein, DNA or RNA chains. The B-factors column lists the minimum, median, 95th percentile and maximum values of B factors of atoms in the group. The column labelled 'Q< 0.9' lists the number of atoms with occupancy less than 0.9.

Mol	Type	Chain	Res	Atoms	RSCC	RSR	LLDF	B-factors(Å ²)	Q<0.9
2	LMT	B	402	12/35	0.93	0.34	11.33	53,56,57,60	0
2	LMT	A	402	12/35	0.94	0.43	10.26	54,61,70,74	0
2	LMT	C	401	12/35	0.97	0.30	6.74	42,53,59,60	0
2	LMT	E	401	12/35	0.93	0.35	6.19	53,60,65,72	0
2	LMT	D	401	12/35	0.94	0.33	5.77	43,56,69,69	0
3	NA	A	401	1/1	0.99	0.46	-	44,44,44,44	0
4	SO4	B	401	5/5	0.97	0.08	-	69,71,89,96	0
4	SO4	E	402	5/5	0.91	0.16	-	79,79,95,98	0
4	SO4	B	403	5/5	0.92	0.14	-	74,78,85,89	0
4	SO4	D	402	5/5	0.92	0.14	-	73,82,87,90	0
4	SO4	A	403	5/5	0.94	0.12	-	77,83,98,99	0

6.5 Other polymers [i](#)

There are no such residues in this entry.