



Full wwPDB X-ray Structure Validation Report ⓘ

Feb 15, 2017 – 02:21 am GMT

PDB ID : 2V8G
Title : CRYSTAL STRUCTURE OF BETA-ALANINE SYNTHASE FROM SACCHAROMYCES KLUYVERI IN COMPLEX WITH THE PRODUCT BETA-ALANINE
Authors : Lundgren, S.; Andersen, B.; Piskur, J.; Dobritsch, D.
Deposited on : 2007-08-07
Resolution : 2.50 Å(reported)

This is a Full wwPDB X-ray Structure Validation Report for a publicly released PDB entry.

We welcome your comments at validation@mail.wwpdb.org

A user guide is available at

<http://wwpdb.org/validation/2016/XrayValidationReportHelp>

with specific help available everywhere you see the ⓘ symbol.

The following versions of software and data (see [references ⓘ](#)) were used in the production of this report:

MolProbity : 4.02b-467
Mogul : 1.7.2 (RC1), CSD as538be (2017)
Xtriage (Phenix) : 1.9-1692
EDS : trunk28620
Percentile statistics : 20161228.v01 (using entries in the PDB archive December 28th 2016)
Refmac : 5.8.0135
CCP4 : 6.5.0
Ideal geometry (proteins) : Engh & Huber (2001)
Ideal geometry (DNA, RNA) : Parkinson et al. (1996)
Validation Pipeline (wwPDB-VP) : recalc28949

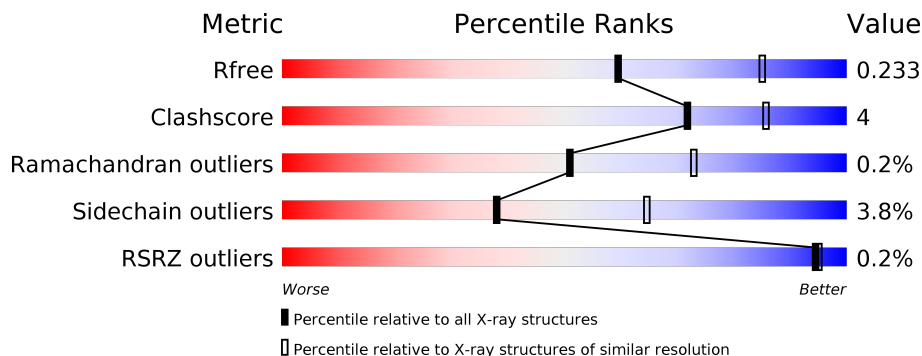
1 Overall quality at a glance

The following experimental techniques were used to determine the structure:

X-RAY DIFFRACTION

The reported resolution of this entry is 2.50 Å.

Percentile scores (ranging between 0-100) for global validation metrics of the entry are shown in the following graphic. The table shows the number of entries on which the scores are based.



Metric	Whole archive (#Entries)	Similar resolution (#Entries, resolution range(Å))
R_{free}	100719	3846 (2.50-2.50)
Clashscore	112137	4554 (2.50-2.50)
Ramachandran outliers	110173	4463 (2.50-2.50)
Sidechain outliers	110143	4465 (2.50-2.50)
RSRZ outliers	101464	3876 (2.50-2.50)

The table below summarises the geometric issues observed across the polymeric chains and their fit to the electron density. The red, orange, yellow and green segments on the lower bar indicate the fraction of residues that contain outliers for ≥ 3 , 2, 1 and 0 types of geometric quality criteria. A grey segment represents the fraction of residues that are not modelled. The numeric value for each fraction is indicated below the corresponding segment, with a dot representing fractions $\leq 5\%$. The upper red bar (where present) indicates the fraction of residues that have poor fit to the electron density. The numeric value is given above the bar.

Mol	Chain	Length	Quality of chain
1	A	474	
1	B	474	
1	C	474	
1	D	474	

2 Entry composition

There are 5 unique types of molecules in this entry. The entry contains 13687 atoms, of which 0 are hydrogens and 0 are deuteriums.

In the tables below, the ZeroOcc column contains the number of atoms modelled with zero occupancy, the AltConf column contains the number of residues with at least one atom in alternate conformation and the Trace column contains the number of residues modelled with at most 2 atoms.

- Molecule 1 is a protein called BETA-ALANINE SYNTHASE.

Mol	Chain	Residues	Atoms					ZeroOcc	AltConf	Trace
1	A	432	Total	C	N	O	S	0	1	0
			3358	2118	576	648	16			
1	B	432	Total	C	N	O	S	0	0	0
			3349	2113	574	646	16			
1	C	432	Total	C	N	O	S	0	1	0
			3357	2117	576	648	16			
1	D	432	Total	C	N	O	S	0	0	0
			3349	2113	574	646	16			

There are 80 discrepancies between the modelled and reference sequences:

Chain	Residue	Modelled	Actual	Comment	Reference
A	456	GLN	-	EXPRESSION TAG	UNP Q96W94
A	457	PHE	-	EXPRESSION TAG	UNP Q96W94
A	458	PRO	-	EXPRESSION TAG	UNP Q96W94
A	459	GLY	-	EXPRESSION TAG	UNP Q96W94
A	460	ASP	-	EXPRESSION TAG	UNP Q96W94
A	461	ASP	-	EXPRESSION TAG	UNP Q96W94
A	462	ASP	-	EXPRESSION TAG	UNP Q96W94
A	463	ASP	-	EXPRESSION TAG	UNP Q96W94
A	464	LYS	-	EXPRESSION TAG	UNP Q96W94
A	465	HIS	-	EXPRESSION TAG	UNP Q96W94
A	466	HIS	-	EXPRESSION TAG	UNP Q96W94
A	467	HIS	-	EXPRESSION TAG	UNP Q96W94
A	468	HIS	-	EXPRESSION TAG	UNP Q96W94
A	469	HIS	-	EXPRESSION TAG	UNP Q96W94
A	470	HIS	-	EXPRESSION TAG	UNP Q96W94
A	471	HIS	-	EXPRESSION TAG	UNP Q96W94
A	472	HIS	-	EXPRESSION TAG	UNP Q96W94
A	473	SER	-	EXPRESSION TAG	UNP Q96W94
A	474	GLY	-	EXPRESSION TAG	UNP Q96W94
A	475	ASP	-	EXPRESSION TAG	UNP Q96W94
B	456	GLN	-	EXPRESSION TAG	UNP Q96W94

Continued on next page...

Continued from previous page...

Chain	Residue	Modelled	Actual	Comment	Reference
B	457	PHE	-	EXPRESSION TAG	UNP Q96W94
B	458	PRO	-	EXPRESSION TAG	UNP Q96W94
B	459	GLY	-	EXPRESSION TAG	UNP Q96W94
B	460	ASP	-	EXPRESSION TAG	UNP Q96W94
B	461	ASP	-	EXPRESSION TAG	UNP Q96W94
B	462	ASP	-	EXPRESSION TAG	UNP Q96W94
B	463	ASP	-	EXPRESSION TAG	UNP Q96W94
B	464	LYS	-	EXPRESSION TAG	UNP Q96W94
B	465	HIS	-	EXPRESSION TAG	UNP Q96W94
B	466	HIS	-	EXPRESSION TAG	UNP Q96W94
B	467	HIS	-	EXPRESSION TAG	UNP Q96W94
B	468	HIS	-	EXPRESSION TAG	UNP Q96W94
B	469	HIS	-	EXPRESSION TAG	UNP Q96W94
B	470	HIS	-	EXPRESSION TAG	UNP Q96W94
B	471	HIS	-	EXPRESSION TAG	UNP Q96W94
B	472	HIS	-	EXPRESSION TAG	UNP Q96W94
B	473	SER	-	EXPRESSION TAG	UNP Q96W94
B	474	GLY	-	EXPRESSION TAG	UNP Q96W94
B	475	ASP	-	EXPRESSION TAG	UNP Q96W94
C	456	GLN	-	EXPRESSION TAG	UNP Q96W94
C	457	PHE	-	EXPRESSION TAG	UNP Q96W94
C	458	PRO	-	EXPRESSION TAG	UNP Q96W94
C	459	GLY	-	EXPRESSION TAG	UNP Q96W94
C	460	ASP	-	EXPRESSION TAG	UNP Q96W94
C	461	ASP	-	EXPRESSION TAG	UNP Q96W94
C	462	ASP	-	EXPRESSION TAG	UNP Q96W94
C	463	ASP	-	EXPRESSION TAG	UNP Q96W94
C	464	LYS	-	EXPRESSION TAG	UNP Q96W94
C	465	HIS	-	EXPRESSION TAG	UNP Q96W94
C	466	HIS	-	EXPRESSION TAG	UNP Q96W94
C	467	HIS	-	EXPRESSION TAG	UNP Q96W94
C	468	HIS	-	EXPRESSION TAG	UNP Q96W94
C	469	HIS	-	EXPRESSION TAG	UNP Q96W94
C	470	HIS	-	EXPRESSION TAG	UNP Q96W94
C	471	HIS	-	EXPRESSION TAG	UNP Q96W94
C	472	HIS	-	EXPRESSION TAG	UNP Q96W94
C	473	SER	-	EXPRESSION TAG	UNP Q96W94
C	474	GLY	-	EXPRESSION TAG	UNP Q96W94
C	475	ASP	-	EXPRESSION TAG	UNP Q96W94
D	456	GLN	-	EXPRESSION TAG	UNP Q96W94
D	457	PHE	-	EXPRESSION TAG	UNP Q96W94
D	458	PRO	-	EXPRESSION TAG	UNP Q96W94

Continued on next page...

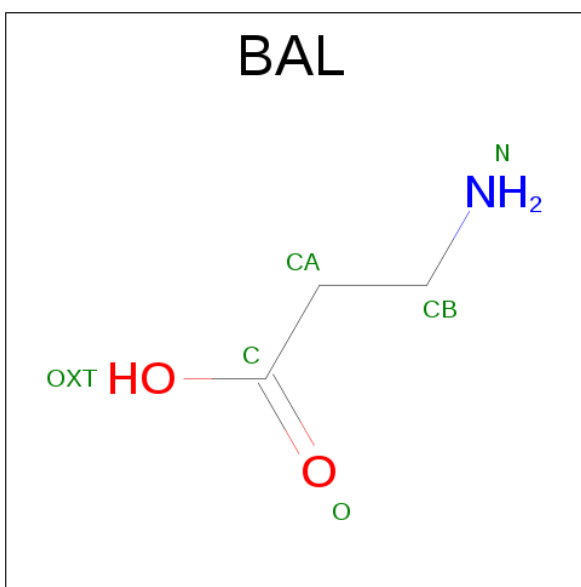
Continued from previous page...

Chain	Residue	Modelled	Actual	Comment	Reference
D	459	GLY	-	EXPRESSION TAG	UNP Q96W94
D	460	ASP	-	EXPRESSION TAG	UNP Q96W94
D	461	ASP	-	EXPRESSION TAG	UNP Q96W94
D	462	ASP	-	EXPRESSION TAG	UNP Q96W94
D	463	ASP	-	EXPRESSION TAG	UNP Q96W94
D	464	LYS	-	EXPRESSION TAG	UNP Q96W94
D	465	HIS	-	EXPRESSION TAG	UNP Q96W94
D	466	HIS	-	EXPRESSION TAG	UNP Q96W94
D	467	HIS	-	EXPRESSION TAG	UNP Q96W94
D	468	HIS	-	EXPRESSION TAG	UNP Q96W94
D	469	HIS	-	EXPRESSION TAG	UNP Q96W94
D	470	HIS	-	EXPRESSION TAG	UNP Q96W94
D	471	HIS	-	EXPRESSION TAG	UNP Q96W94
D	472	HIS	-	EXPRESSION TAG	UNP Q96W94
D	473	SER	-	EXPRESSION TAG	UNP Q96W94
D	474	GLY	-	EXPRESSION TAG	UNP Q96W94
D	475	ASP	-	EXPRESSION TAG	UNP Q96W94

- Molecule 2 is ZINC ION (three-letter code: ZN) (formula: Zn).

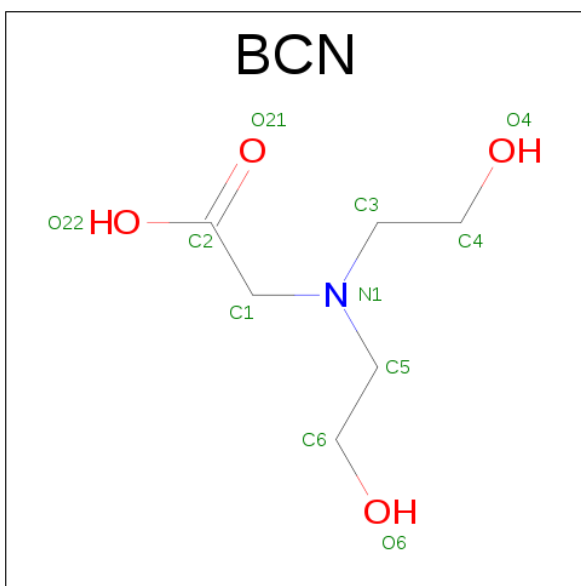
Mol	Chain	Residues	Atoms		ZeroOcc	AltConf
2	B	2	Total 2	Zn 2	0	0
2	A	2	Total 2	Zn 2	0	0
2	D	2	Total 2	Zn 2	0	0
2	C	2	Total 2	Zn 2	0	0

- Molecule 3 is BETA-ALANINE (three-letter code: BAL) (formula: C₃H₇NO₂).



Mol	Chain	Residues	Atoms				ZeroOcc	AltConf
3	A	1	Total	C	N	O	0	0
			6	3	1	2		
3	D	1	Total	C	N	O	0	0
			6	3	1	2		

- Molecule 4 is BICINE (three-letter code: BCN) (formula: $C_6H_{13}NO_4$).



Mol	Chain	Residues	Atoms				ZeroOcc	AltConf
4	A	1	Total	C	N	O	0	0
			11	6	1	4		
4	B	1	Total	C	N	O	0	0
			11	6	1	4		

Continued on next page...

Continued from previous page...

Mol	Chain	Residues	Atoms				ZeroOcc	AltConf
4	C	1	Total	C	N	O	0	0
			11	6	1	4		
4	D	1	Total	C	N	O	0	0
			11	6	1	4		

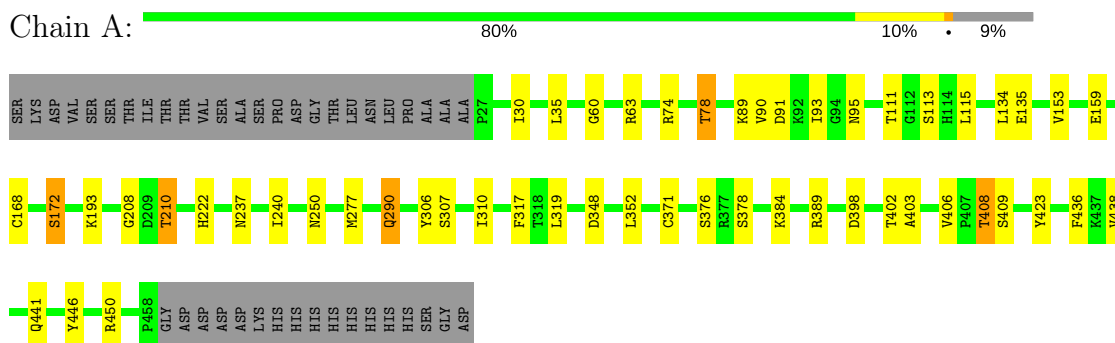
- Molecule 5 is water.

Mol	Chain	Residues	Atoms		ZeroOcc	AltConf
5	A	77	Total	O	0	0
			77	77		
5	B	45	Total	O	0	0
			45	45		
5	C	23	Total	O	0	0
			23	23		
5	D	65	Total	O	0	0
			65	65		

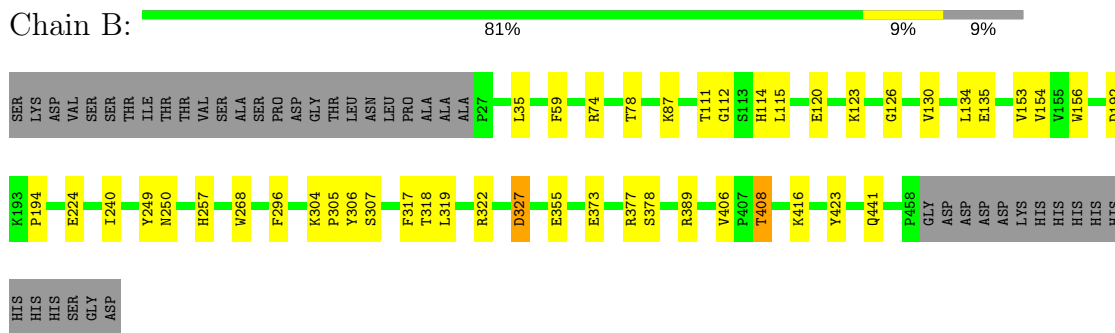
3 Residue-property plots

These plots are drawn for all protein, RNA and DNA chains in the entry. The first graphic for a chain summarises the proportions of the various outlier classes displayed in the second graphic. The second graphic shows the sequence view annotated by issues in geometry and electron density. Residues are color-coded according to the number of geometric quality criteria for which they contain at least one outlier: green = 0, yellow = 1, orange = 2 and red = 3 or more. A red dot above a residue indicates a poor fit to the electron density ($RSRZ > 2$). Stretches of 2 or more consecutive residues without any outlier are shown as a green connector. Residues present in the sample, but not in the model, are shown in grey.

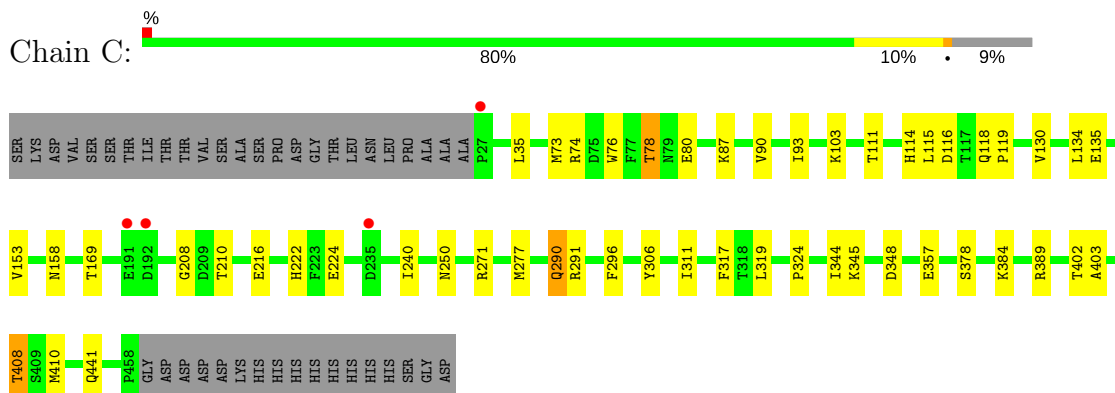
• Molecule 1: BETA-ALANINE SYNTHASE



• Molecule 1: BETA-ALANINE SYNTHASE



• Molecule 1: BETA-ALANINE SYNTHASE



• Molecule 1: BETA-ALANINE SYNTHASE

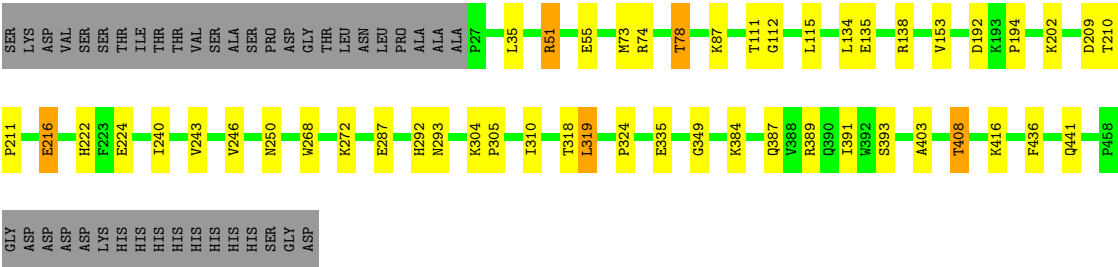
Chain D:

81%

9%

•

9%



4 Data and refinement statistics

Property	Value	Source
Space group	P 1 21 1	Depositor
Cell constants a, b, c, α , β , γ	50.10Å 217.30Å 81.60Å 90.00° 91.90° 90.00°	Depositor
Resolution (Å)	19.84 – 2.50 19.84 – 2.50	Depositor EDS
% Data completeness (in resolution range)	99.8 (19.84-2.50) 99.8 (19.84-2.50)	Depositor EDS
R_{merge}	0.16	Depositor
R_{sym}	(Not available)	Depositor
$\langle I/\sigma(I) \rangle$ ¹	4.94 (at 2.50Å)	Xtriage
Refinement program	REFMAC 5.2.0019	Depositor
R, R_{free}	0.189 , 0.231 0.190 , 0.233	Depositor DCC
R_{free} test set	2931 reflections (5.16%)	DCC
Wilson B-factor (Å ²)	25.8	Xtriage
Anisotropy	0.389	Xtriage
Bulk solvent k_{sol} (e/Å ³), B_{sol} (Å ²)	0.32 , 10.0	EDS
L-test for twinning ²	$\langle L \rangle = 0.45$, $\langle L^2 \rangle = 0.27$	Xtriage
Estimated twinning fraction	0.076 for h,-k,-l	Xtriage
F_o, F_c correlation	0.93	EDS
Total number of atoms	13687	wwPDB-VP
Average B, all atoms (Å ²)	26.0	wwPDB-VP

Xtriage's analysis on translational NCS is as follows: *The largest off-origin peak in the Patterson function is 6.71% of the height of the origin peak. No significant pseudotranslation is detected.*

¹Intensities estimated from amplitudes.

²Theoretical values of $\langle |L| \rangle$, $\langle L^2 \rangle$ for acentric reflections are 0.5, 0.333 respectively for untwinned datasets, and 0.375, 0.2 for perfectly twinned datasets.

5 Model quality [i](#)

5.1 Standard geometry [i](#)

Bond lengths and bond angles in the following residue types are not validated in this section: ZN, BAL, BCN

The Z score for a bond length (or angle) is the number of standard deviations the observed value is removed from the expected value. A bond length (or angle) with $|Z| > 5$ is considered an outlier worth inspection. RMSZ is the root-mean-square of all Z scores of the bond lengths (or angles).

Mol	Chain	Bond lengths		Bond angles	
		RMSZ	$\# Z > 5$	RMSZ	$\# Z > 5$
1	A	0.52	0/3437	0.59	0/4659
1	B	0.49	0/3428	0.55	0/4647
1	C	0.48	0/3436	0.55	0/4658
1	D	0.50	0/3428	0.58	0/4647
All	All	0.50	0/13729	0.57	0/18611

There are no bond length outliers.

There are no bond angle outliers.

There are no chirality outliers.

There are no planarity outliers.

5.2 Too-close contacts [i](#)

In the following table, the Non-H and H(model) columns list the number of non-hydrogen atoms and hydrogen atoms in the chain respectively. The H(added) column lists the number of hydrogen atoms added and optimized by MolProbity. The Clashes column lists the number of clashes within the asymmetric unit, whereas Symm-Clashes lists symmetry related clashes.

Mol	Chain	Non-H	H(model)	H(added)	Clashes	Symm-Clashes
1	A	3358	0	3236	30	0
1	B	3349	0	3229	24	0
1	C	3357	0	3234	27	0
1	D	3349	0	3229	26	0
2	A	2	0	0	0	0
2	B	2	0	0	0	0
2	C	2	0	0	0	0
2	D	2	0	0	0	0
3	A	6	0	6	0	0

Continued on next page...

Continued from previous page...

Mol	Chain	Non-H	H(model)	H(added)	Clashes	Symm-Clashes
3	D	6	0	6	0	0
4	A	11	0	12	1	0
4	B	11	0	12	1	0
4	C	11	0	12	1	0
4	D	11	0	12	2	0
5	A	77	0	0	2	0
5	B	45	0	0	1	0
5	C	23	0	0	0	0
5	D	65	0	0	1	0
All	All	13687	0	12988	107	0

The all-atom clashscore is defined as the number of clashes found per 1000 atoms (including hydrogen atoms). The all-atom clashscore for this structure is 4.

All (107) close contacts within the same asymmetric unit are listed below, sorted by their clash magnitude.

Atom-1	Atom-2	Interatomic distance (Å)	Clash overlap (Å)
1:D:319:LEU:CD2	1:D:319:LEU:N	2.35	0.90
1:D:318:THR:C	1:D:319:LEU:HD22	1.99	0.83
1:D:319:LEU:HD22	1:D:319:LEU:N	1.93	0.81
1:C:317:PHE:HE1	1:C:319:LEU:HD21	1.51	0.76
1:B:59:PHE:O	1:B:123:LYS:HE2	1.86	0.74
1:B:115:LEU:HD21	1:B:130:VAL:HG21	1.72	0.71
1:C:74:ARG:O	1:C:78:THR:HG22	1.92	0.70
1:A:371:CYS:HB3	1:A:409:SER:HB3	1.75	0.69
1:D:74:ARG:O	1:D:78:THR:HG22	1.93	0.68
1:A:317:PHE:HE1	1:A:319:LEU:HD21	1.60	0.66
1:B:296:PHE:HE1	1:B:319:LEU:HD22	1.60	0.66
4:B:601:BCN:H52	5:B:2045:HOH:O	1.96	0.64
1:A:317:PHE:CE1	1:A:319:LEU:HD21	2.31	0.64
1:B:317:PHE:CE1	1:B:319:LEU:HD21	2.31	0.64
1:A:63:ARG:NH1	1:A:115:LEU:O	2.30	0.64
1:B:35:LEU:HB2	1:B:135:GLU:HG3	1.79	0.63
1:B:317:PHE:HE1	1:B:319:LEU:HD21	1.62	0.63
1:D:135:GLU:OE1	1:D:138:ARG:HD2	1.98	0.63
1:B:296:PHE:CE1	1:B:319:LEU:HD22	2.34	0.63
1:D:384:LYS:H	1:D:387:GLN:HE21	1.49	0.60
1:A:403:ALA:HA	1:A:408:THR:HG23	1.82	0.60
1:A:222:HIS:HB3	1:A:408:THR:HB	1.83	0.60
1:A:406:VAL:O	1:A:408:THR:HG22	2.02	0.60
1:D:319:LEU:HD23	1:D:319:LEU:N	2.16	0.59

Continued on next page...

Continued from previous page...

Atom-1	Atom-2	Interatomic distance (Å)	Clash overlap (Å)
1:A:74:ARG:O	1:A:78:THR:HG22	2.03	0.59
1:A:371:CYS:HB3	1:A:409:SER:CB	2.33	0.59
1:B:112:GLY:O	1:B:224:GLU:HG3	2.03	0.58
1:C:93:ILE:HG13	1:C:93:ILE:O	2.03	0.58
1:D:35:LEU:HB2	1:D:135:GLU:HG3	1.84	0.58
1:D:403:ALA:HA	1:D:408:THR:HG23	1.85	0.57
1:C:403:ALA:HA	1:C:408:THR:HG23	1.87	0.57
1:C:296:PHE:CE1	1:C:319:LEU:HD22	2.40	0.57
1:C:324:PRO:HB2	4:C:601:BCN:H42	1.87	0.56
1:C:118:GLN:HB3	1:C:119:PRO:HD2	1.89	0.55
1:C:35:LEU:HB2	1:C:135:GLU:HG3	1.89	0.55
1:B:373:GLU:OE1	1:B:377:ARG:NE	2.41	0.54
1:D:292:HIS:HE1	1:D:335:GLU:OE1	1.91	0.54
1:A:35:LEU:HB2	1:A:135:GLU:HG3	1.89	0.53
1:A:74:ARG:O	1:A:78:THR:CG2	2.57	0.53
1:C:296:PHE:HE1	1:C:319:LEU:HD22	1.73	0.52
1:A:403:ALA:HA	1:A:408:THR:CG2	2.39	0.52
1:A:378:SER:OG	1:A:441:GLN:HB3	2.10	0.51
1:A:210:THR:HG22	5:A:2013:HOH:O	2.10	0.50
1:A:277:MET:HG3	1:A:352:LEU:HD22	1.93	0.50
1:C:73:MET:HG3	1:C:115:LEU:HD13	1.92	0.50
1:C:317:PHE:CE1	1:C:319:LEU:HD21	2.38	0.50
1:B:304:LYS:HB3	1:B:305:PRO:HA	1.94	0.50
1:B:74:ARG:O	1:B:78:THR:HG22	2.13	0.48
4:D:601:BCN:H62	5:D:2065:HOH:O	2.12	0.48
1:B:257:HIS:HE1	1:B:355:GLU:OE2	1.97	0.48
1:A:290:GLN:HG3	1:B:268:TRP:CE2	2.49	0.48
1:C:378:SER:OG	1:C:441:GLN:HB3	2.14	0.48
1:D:112:GLY:O	1:D:224:GLU:HG3	2.14	0.47
1:D:73:MET:HG3	1:D:115:LEU:HD13	1.95	0.47
1:D:211:PRO:HB2	1:D:216:GLU:HG3	1.96	0.47
1:A:402:THR:OG1	1:A:408:THR:HG21	2.15	0.47
1:A:307:SER:HB3	1:A:310:ILE:HG13	1.96	0.47
1:B:249:TYR:HB3	1:B:322:ARG:HD3	1.97	0.46
1:C:402:THR:OG1	1:C:408:THR:HG21	2.16	0.46
1:B:378:SER:OG	1:B:441:GLN:HB3	2.15	0.46
1:D:272:LYS:HE2	1:D:349:GLY:O	2.15	0.46
1:A:90:VAL:O	1:A:208:GLY:HA3	2.15	0.46
1:A:89:LYS:HB3	1:A:210:THR:HG21	1.98	0.46
1:A:93:ILE:O	1:A:93:ILE:HG13	2.16	0.46
1:D:135:GLU:HB3	1:D:436:PHE:CE1	2.51	0.45

Continued on next page...

Continued from previous page...

Atom-1	Atom-2	Interatomic distance (Å)	Clash overlap (Å)
1:D:324:PRO:HB2	4:D:601:BCN:H52	1.98	0.45
1:D:192:ASP:O	1:D:194:PRO:HD3	2.16	0.45
1:B:318:THR:O	1:B:319:LEU:HD23	2.15	0.45
1:C:115:LEU:HD21	1:C:130:VAL:HG21	1.98	0.45
1:C:290:GLN:HG3	1:D:268:TRP:CE2	2.52	0.45
1:C:76:TRP:CH2	1:C:80:GLU:HG3	2.52	0.45
4:A:601:BCN:H61	4:A:601:BCN:H12	1.54	0.45
1:B:154:VAL:HG11	1:B:156:TRP:CE2	2.51	0.45
1:D:304:LYS:HB3	1:D:305:PRO:HA	1.99	0.45
1:B:111:THR:O	1:B:153:VAL:HA	2.16	0.45
1:D:111:THR:O	1:D:153:VAL:HA	2.17	0.45
1:B:406:VAL:O	1:B:408:THR:HG23	2.17	0.44
1:B:327:ASP:N	1:B:327:ASP:OD1	2.51	0.44
1:B:192:ASP:O	1:B:194:PRO:HD3	2.18	0.44
1:C:222:HIS:HB3	1:C:408:THR:HB	1.99	0.44
1:B:120:GLU:HG2	1:B:423:TYR:OH	2.18	0.44
1:B:114:HIS:CE1	1:B:126:GLY:HA3	2.53	0.43
1:C:103:LYS:HE2	1:C:103:LYS:HB3	1.87	0.43
1:C:111:THR:O	1:C:153:VAL:HA	2.19	0.43
1:C:158:ASN:HB3	1:C:169:THR:HB	2.00	0.43
1:C:271:ARG:HG2	1:C:311:ILE:HD13	1.99	0.43
1:B:115:LEU:HD21	1:B:130:VAL:CG2	2.42	0.42
1:A:111:THR:O	1:A:153:VAL:HA	2.20	0.42
1:A:91:ASP:OD2	1:A:95:ASN:HB2	2.19	0.42
1:D:246:VAL:HG22	1:D:393:SER:HB3	2.01	0.42
1:C:277:MET:HE2	1:C:344:ILE:HD12	2.00	0.41
1:D:222:HIS:O	1:D:408:THR:HB	2.20	0.41
1:A:30:ILE:HG12	1:A:436:PHE:HE2	1.85	0.41
1:A:446:TYR:CE2	1:A:450:ARG:HD2	2.55	0.41
1:C:118:GLN:HB3	1:D:310:ILE:HD11	2.02	0.41
1:D:74:ARG:O	1:D:78:THR:CG2	2.66	0.41
1:A:240:ILE:HG12	1:A:438:VAL:HG21	2.01	0.41
1:A:159:GLU:HG3	1:A:398:ASP:OD2	2.20	0.41
1:D:243:VAL:HA	1:D:391:ILE:O	2.21	0.41
1:A:210:THR:CG2	5:A:2013:HOH:O	2.66	0.41
1:C:90:VAL:O	1:C:208:GLY:HA3	2.21	0.41
1:C:114:HIS:HB2	1:C:116:ASP:OD1	2.21	0.41
1:C:224:GLU:HB3	1:C:410:MET:HG2	2.02	0.41
1:A:60:GLY:HA3	1:A:423:TYR:CD2	2.56	0.40
1:D:51:ARG:NH2	1:D:55:GLU:O	2.55	0.40
1:C:115:LEU:HD21	1:C:130:VAL:CG2	2.52	0.40

Continued on next page...

Continued from previous page...

Atom-1	Atom-2	Interatomic distance (Å)	Clash overlap (Å)
1:A:168:CYS:O	1:A:172:SER:HB2	2.21	0.40

There are no symmetry-related clashes.

5.3 Torsion angles [i](#)

5.3.1 Protein backbone [i](#)

In the following table, the Percentiles column shows the percent Ramachandran outliers of the chain as a percentile score with respect to all X-ray entries followed by that with respect to entries of similar resolution.

The Analysed column shows the number of residues for which the backbone conformation was analysed, and the total number of residues.

Mol	Chain	Analysed	Favoured	Allowed	Outliers	Percentiles	
1	A	431/474 (91%)	419 (97%)	10 (2%)	2 (0%)	32	53
1	B	430/474 (91%)	416 (97%)	13 (3%)	1 (0%)	51	73
1	C	431/474 (91%)	418 (97%)	12 (3%)	1 (0%)	51	73
1	D	430/474 (91%)	416 (97%)	14 (3%)	0	100	100
All	All	1722/1896 (91%)	1669 (97%)	49 (3%)	4 (0%)	51	73

All (4) Ramachandran outliers are listed below:

Mol	Chain	Res	Type
1	A	306	TYR
1	A	113	SER
1	B	306	TYR
1	C	306	TYR

5.3.2 Protein sidechains [i](#)

In the following table, the Percentiles column shows the percent sidechain outliers of the chain as a percentile score with respect to all X-ray entries followed by that with respect to entries of similar resolution.

The Analysed column shows the number of residues for which the sidechain conformation was analysed, and the total number of residues.

Mol	Chain	Analysed	Rotameric	Outliers	Percentiles	
1	A	359/393 (91%)	346 (96%)	13 (4%)	40	67
1	B	358/393 (91%)	349 (98%)	9 (2%)	53	79
1	C	359/393 (91%)	344 (96%)	15 (4%)	34	59
1	D	358/393 (91%)	341 (95%)	17 (5%)	30	54
All	All	1434/1572 (91%)	1380 (96%)	54 (4%)	38	64

All (54) residues with a non-rotameric sidechain are listed below:

Mol	Chain	Res	Type
1	A	78	THR
1	A	134	LEU
1	A	172	SER
1	A	193	LYS
1	A	210	THR
1	A	237	ASN
1	A	250	ASN
1	A	290	GLN
1	A	348	ASP
1	A	376	SER
1	A	384	LYS
1	A	389	ARG
1	A	408	THR
1	B	87	LYS
1	B	134	LEU
1	B	240	ILE
1	B	250	ASN
1	B	307	SER
1	B	327	ASP
1	B	389	ARG
1	B	408	THR
1	B	416	LYS
1	C	78	THR
1	C	87	LYS
1	C	134	LEU
1	C	210	THR
1	C	216	GLU
1	C	240	ILE
1	C	250	ASN
1	C	290	GLN
1	C	291	ARG
1	C	345	LYS
1	C	348	ASP

Continued on next page...

Continued from previous page...

Mol	Chain	Res	Type
1	C	357	GLU
1	C	384	LYS
1	C	389	ARG
1	C	408	THR
1	D	51	ARG
1	D	78	THR
1	D	87	LYS
1	D	134	LEU
1	D	202	LYS
1	D	209	ASP
1	D	210	THR
1	D	216	GLU
1	D	240	ILE
1	D	250	ASN
1	D	287	GLU
1	D	293	ASN
1	D	319	LEU
1	D	389	ARG
1	D	408	THR
1	D	416	LYS
1	D	441	GLN

Some sidechains can be flipped to improve hydrogen bonding and reduce clashes. All (29) such sidechains are listed below:

Mol	Chain	Res	Type
1	A	237	ASN
1	A	250	ASN
1	A	290	GLN
1	A	401	GLN
1	A	445	ASN
1	A	448	ASN
1	B	104	ASN
1	B	250	ASN
1	B	252	GLN
1	B	257	HIS
1	B	290	GLN
1	B	292	HIS
1	B	441	GLN
1	B	445	ASN
1	C	37	GLN
1	C	54	GLN
1	C	237	ASN

Continued on next page...

Continued from previous page...

Mol	Chain	Res	Type
1	C	250	ASN
1	C	252	GLN
1	C	290	GLN
1	C	366	ASN
1	C	441	GLN
1	C	445	ASN
1	D	79	ASN
1	D	250	ASN
1	D	257	HIS
1	D	292	HIS
1	D	387	GLN
1	D	445	ASN

5.3.3 RNA [i](#)

There are no RNA molecules in this entry.

5.4 Non-standard residues in protein, DNA, RNA chains [i](#)

There are no non-standard protein/DNA/RNA residues in this entry.

5.5 Carbohydrates [i](#)

There are no carbohydrates in this entry.

5.6 Ligand geometry [i](#)

Of 14 ligands modelled in this entry, 8 are monoatomic - leaving 6 for Mogul analysis.

In the following table, the Counts columns list the number of bonds (or angles) for which Mogul statistics could be retrieved, the number of bonds (or angles) that are observed in the model and the number of bonds (or angles) that are defined in the chemical component dictionary. The Link column lists molecule types, if any, to which the group is linked. The Z score for a bond length (or angle) is the number of standard deviations the observed value is removed from the expected value. A bond length (or angle) with $|Z| > 2$ is considered an outlier worth inspection. RMSZ is the root-mean-square of all Z scores of the bond lengths (or angles).

Mol	Type	Chain	Res	Link	Bond lengths			Bond angles		
					Counts	RMSZ	$\# Z > 2$	Counts	RMSZ	$\# Z > 2$
3	BAL	A	600	-	2,5,5	0.30	0	2,5,5	0.82	0
4	BCN	A	601	-	7,10,10	0.71	0	8,11,11	1.01	0

Mol	Type	Chain	Res	Link	Bond lengths			Bond angles		
					Counts	RMSZ	# Z > 2	Counts	RMSZ	# Z > 2
4	BCN	B	601	-	7,10,10	0.75	0	8,11,11	1.22	1 (12%)
4	BCN	C	601	-	7,10,10	0.47	0	8,11,11	0.82	0
3	BAL	D	600	-	2,5,5	0.41	0	2,5,5	0.66	0
4	BCN	D	601	-	7,10,10	0.42	0	8,11,11	0.55	0

In the following table, the Chirals column lists the number of chiral outliers, the number of chiral centers analysed, the number of these observed in the model and the number defined in the chemical component dictionary. Similar counts are reported in the Torsion and Rings columns. '-' means no outliers of that kind were identified.

Mol	Type	Chain	Res	Link	Chirals	Torsions	Rings
3	BAL	A	600	-	-	0/1/3/3	0/0/0/0
4	BCN	A	601	-	-	0/8/10/10	0/0/0/0
4	BCN	B	601	-	-	0/8/10/10	0/0/0/0
4	BCN	C	601	-	-	0/8/10/10	0/0/0/0
3	BAL	D	600	-	-	0/1/3/3	0/0/0/0
4	BCN	D	601	-	-	0/8/10/10	0/0/0/0

There are no bond length outliers.

All (1) bond angle outliers are listed below:

Mol	Chain	Res	Type	Atoms	Z	Observed(°)	Ideal(°)
4	B	601	BCN	C2-C1-N1	-2.74	109.57	113.48

There are no chirality outliers.

There are no torsion outliers.

There are no ring outliers.

4 monomers are involved in 5 short contacts:

Mol	Chain	Res	Type	Clashes	Symm-Clashes
4	A	601	BCN	1	0
4	B	601	BCN	1	0
4	C	601	BCN	1	0
4	D	601	BCN	2	0

5.7 Other polymers ⓘ

There are no such residues in this entry.

5.8 Polymer linkage issues ⓘ

There are no chain breaks in this entry.

6 Fit of model and data [i](#)

6.1 Protein, DNA and RNA chains [i](#)

In the following table, the column labelled ‘#RSRZ> 2’ contains the number (and percentage) of RSRZ outliers, followed by percent RSRZ outliers for the chain as percentile scores relative to all X-ray entries and entries of similar resolution. The OWAB column contains the minimum, median, 95th percentile and maximum values of the occupancy-weighted average B-factor per residue. The column labelled ‘Q< 0.9’ lists the number of (and percentage) of residues with an average occupancy less than 0.9.

Mol	Chain	Analysed	<RSRZ>	#RSRZ>2			OWAB(Å ²)	Q<0.9
1	A	432/474 (91%)	-0.64	0	100	100	22, 26, 30, 36	0
1	B	432/474 (91%)	-0.52	0	100	100	22, 26, 29, 35	0
1	C	432/474 (91%)	-0.50	4 (0%)	84	85	22, 26, 29, 36	0
1	D	432/474 (91%)	-0.64	0	100	100	22, 26, 30, 36	0
All	All	1728/1896 (91%)	-0.58	4 (0%)	94	95	22, 26, 30, 36	0

All (4) RSRZ outliers are listed below:

Mol	Chain	Res	Type	RSRZ
1	C	192	ASP	4.3
1	C	235	ASP	2.4
1	C	27	PRO	2.4
1	C	191	GLU	2.1

6.2 Non-standard residues in protein, DNA, RNA chains [i](#)

There are no non-standard protein/DNA/RNA residues in this entry.

6.3 Carbohydrates [i](#)

There are no carbohydrates in this entry.

6.4 Ligands [i](#)

In the following table, the Atoms column lists the number of modelled atoms in the group and the number defined in the chemical component dictionary. LLDF column lists the quality of electron density of the group with respect to its neighbouring residues in protein, DNA or RNA chains. The B-factors column lists the minimum, median, 95th percentile and maximum values of B factors

of atoms in the group. The column labelled 'Q < 0.9' lists the number of atoms with occupancy less than 0.9.

Mol	Type	Chain	Res	Atoms	RSCC	RSR	LLDF	B-factors(Å ²)	Q<0.9
4	BCN	A	601	11/11	0.88	0.14	1.77	45,47,48,48	0
3	BAL	D	600	6/6	0.95	0.14	1.54	37,37,38,38	0
4	BCN	C	601	11/11	0.83	0.14	1.47	43,44,45,45	0
3	BAL	A	600	6/6	0.95	0.12	0.99	40,41,41,41	0
4	BCN	D	601	11/11	0.90	0.12	0.77	47,47,49,49	0
2	ZN	B	500	1/1	1.00	0.11	0.64	38,38,38,38	0
4	BCN	B	601	11/11	0.91	0.14	0.44	40,42,45,45	0
2	ZN	D	500	1/1	0.99	0.10	-0.33	42,42,42,42	0
2	ZN	C	500	1/1	0.98	0.07	-1.50	36,36,36,36	0
2	ZN	A	500	1/1	1.00	0.07	-2.23	38,38,38,38	0
2	ZN	D	501	1/1	0.99	0.04	-2.51	62,62,62,62	0
2	ZN	A	501	1/1	0.98	0.05	-3.23	54,54,54,54	0
2	ZN	B	501	1/1	0.98	0.04	-4.22	58,58,58,58	0
2	ZN	C	501	1/1	0.98	0.03	-6.55	53,53,53,53	0

6.5 Other polymers

There are no such residues in this entry.