



Full wwPDB X-ray Structure Validation Report ⓘ

Feb 15, 2017 – 01:27 am GMT

PDB ID : 3V8S
Title : Human RHO-ASSOCIATED PROTEIN KINASE 1 (ROCK 1) IN COMPLEX
WITH INDAZOLE DERIVATIVE (COMPOUND 18)
Authors : Martin, M.P.; Zhu, J.-Yi.; Schonbrunn, E.
Deposited on : 2011-12-23
Resolution : 2.29 Å(reported)

This is a Full wwPDB X-ray Structure Validation Report for a publicly released PDB entry.

We welcome your comments at validation@mail.wwpdb.org

A user guide is available at

<http://wwpdb.org/validation/2016/XrayValidationReportHelp>

with specific help available everywhere you see the ⓘ symbol.

The following versions of software and data (see [references ⓘ](#)) were used in the production of this report:

MolProbity : 4.02b-467
Mogul : 1.7.2 (RC1), CSD as538be (2017)
Xtriage (Phenix) : 1.9-1692
EDS : trunk28620
Percentile statistics : 20161228.v01 (using entries in the PDB archive December 28th 2016)
Refmac : 5.8.0135
CCP4 : 6.5.0
Ideal geometry (proteins) : Engh & Huber (2001)
Ideal geometry (DNA, RNA) : Parkinson et al. (1996)
Validation Pipeline (wwPDB-VP) : recalc28949

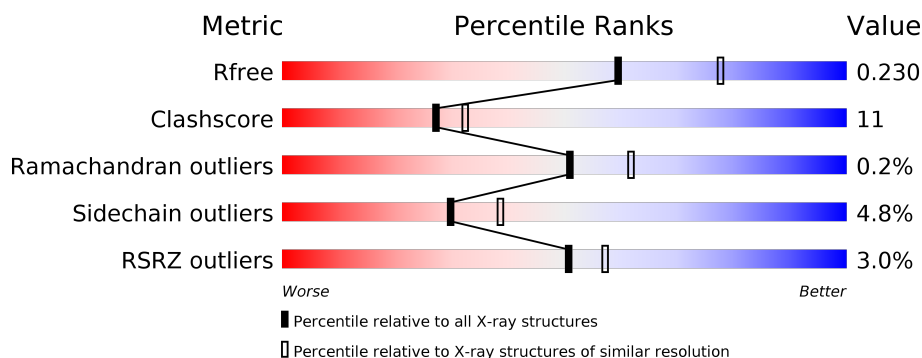
1 Overall quality at a glance

The following experimental techniques were used to determine the structure:

X-RAY DIFFRACTION

The reported resolution of this entry is 2.29 Å.

Percentile scores (ranging between 0-100) for global validation metrics of the entry are shown in the following graphic. The table shows the number of entries on which the scores are based.



Metric	Whole archive (#Entries)	Similar resolution (#Entries, resolution range(Å))
R_{free}	100719	5609 (2.30-2.26)
Clashscore	112137	6364 (2.30-2.26)
Ramachandran outliers	110173	6281 (2.30-2.26)
Sidechain outliers	110143	6281 (2.30-2.26)
RSRZ outliers	101464	5639 (2.30-2.26)

The table below summarises the geometric issues observed across the polymeric chains and their fit to the electron density. The red, orange, yellow and green segments on the lower bar indicate the fraction of residues that contain outliers for ≥ 3 , 2, 1 and 0 types of geometric quality criteria. A grey segment represents the fraction of residues that are not modelled. The numeric value for each fraction is indicated below the corresponding segment, with a dot representing fractions $\leq 5\%$. The upper red bar (where present) indicates the fraction of residues that have poor fit to the electron density. The numeric value is given above the bar.

Mol	Chain	Length	Quality of chain
1	A	410	<div> <div>2%</div> <div> <div></div> <div>80%</div> <div>15%</div> <div>• •</div> </div> </div>
1	B	410	<div> <div>2%</div> <div> <div></div> <div>73%</div> <div>20%</div> <div>• •</div> </div> </div>
1	C	410	<div> <div>3%</div> <div> <div></div> <div>79%</div> <div>16%</div> <div>• •</div> </div> </div>
1	D	410	<div> <div>4%</div> <div> <div></div> <div>74%</div> <div>20%</div> <div>• •</div> </div> </div>

2 Entry composition [i](#)

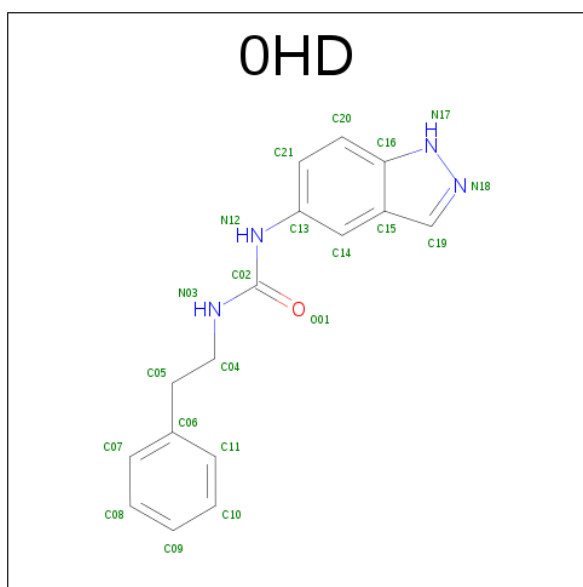
There are 3 unique types of molecules in this entry. The entry contains 13834 atoms, of which 0 are hydrogens and 0 are deuteriums.

In the tables below, the ZeroOcc column contains the number of atoms modelled with zero occupancy, the AltConf column contains the number of residues with at least one atom in alternate conformation and the Trace column contains the number of residues modelled with at most 2 atoms.

- Molecule 1 is a protein called Rho-associated protein kinase 1.

Mol	Chain	Residues	Atoms					ZeroOcc	AltConf	Trace
1	A	395	Total	C	N	O	S	0	0	0
			3211	2050	531	609	21			
1	B	397	Total	C	N	O	S	0	0	0
			3228	2062	533	612	21			
1	C	395	Total	C	N	O	S	0	0	0
			3211	2050	531	609	21			
1	D	397	Total	C	N	O	S	0	0	0
			3228	2062	533	612	21			

- Molecule 2 is 1-(1H-INDAZOL-5-YL)-3-(2-PHENYLETHYL)UREA (three-letter code: 0HD) (formula: C₁₆H₁₆N₄O).



Mol	Chain	Residues	Atoms				ZeroOcc	AltConf
2	A	1	Total	C	N	O	0	0
			21	16	4	1		
2	B	1	Total	C	N	O	0	0
			21	16	4	1		

Continued on next page...

Continued from previous page...

Mol	Chain	Residues	Atoms				ZeroOcc	AltConf
2	C	1	Total	C	N	O	0	0
			21	16	4	1		
2	D	1	Total	C	N	O	0	0
			21	16	4	1		

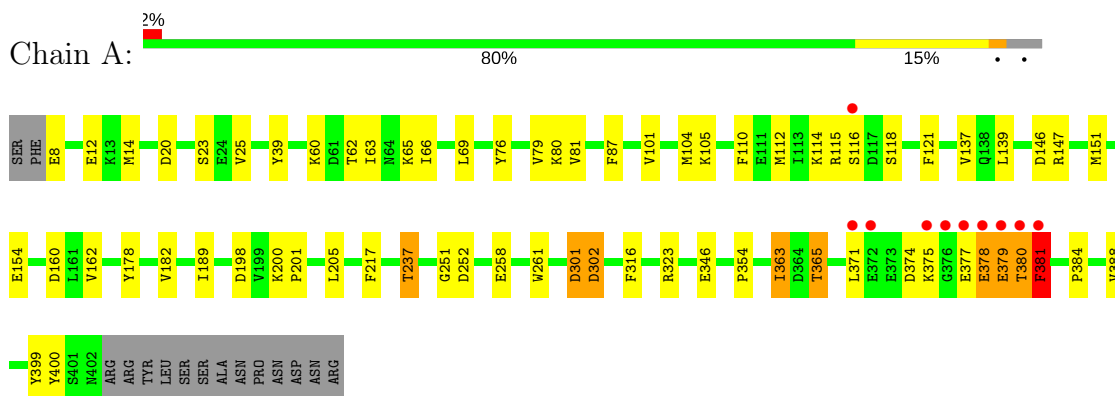
- Molecule 3 is water.

Mol	Chain	Residues	Atoms		ZeroOcc	AltConf
3	A	242	Total	O	0	0
			242	242		
3	B	191	Total	O	0	0
			191	191		
3	C	228	Total	O	0	0
			228	228		
3	D	211	Total	O	0	0
			211	211		

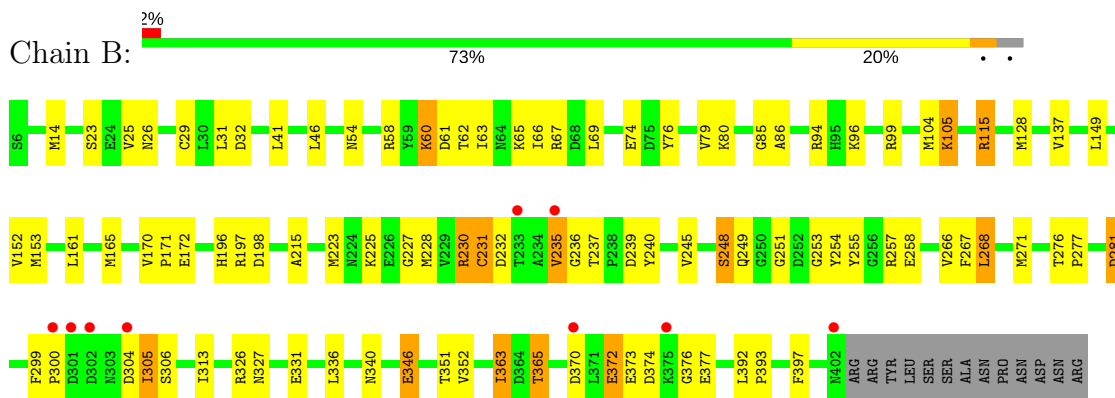
3 Residue-property plots [i](#)

These plots are drawn for all protein, RNA and DNA chains in the entry. The first graphic for a chain summarises the proportions of the various outlier classes displayed in the second graphic. The second graphic shows the sequence view annotated by issues in geometry and electron density. Residues are color-coded according to the number of geometric quality criteria for which they contain at least one outlier: green = 0, yellow = 1, orange = 2 and red = 3 or more. A red dot above a residue indicates a poor fit to the electron density ($RSRZ > 2$). Stretches of 2 or more consecutive residues without any outlier are shown as a green connector. Residues present in the sample, but not in the model, are shown in grey.

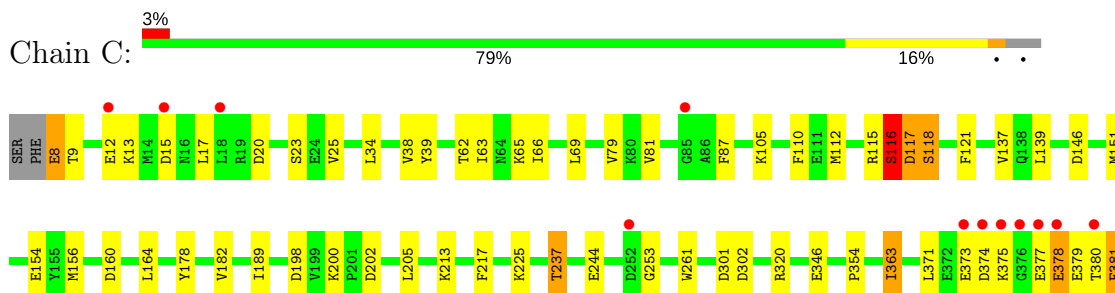
• Molecule 1: Rho-associated protein kinase 1

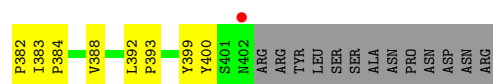


• Molecule 1: Rho-associated protein kinase 1

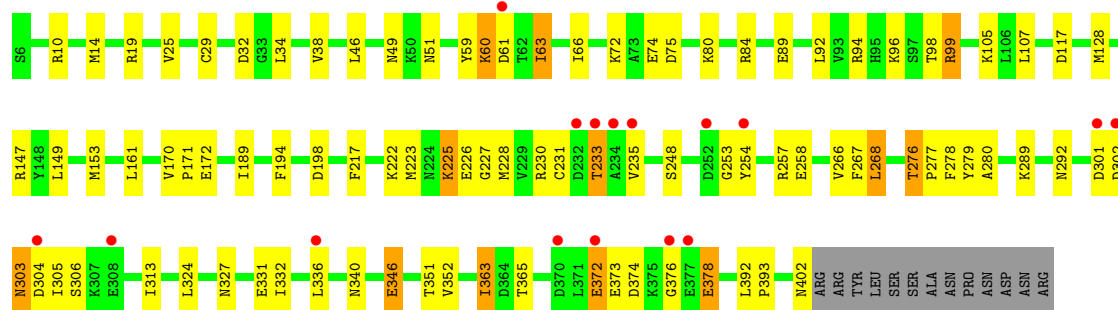
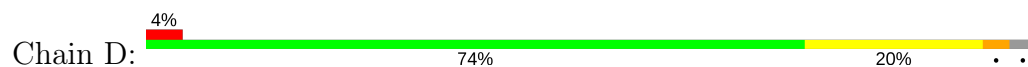


• Molecule 1: Rho-associated protein kinase 1





● Molecule 1: Rho-associated protein kinase 1



4 Data and refinement statistics

Property	Value	Source
Space group	C 2 2 21	Depositor
Cell constants a, b, c, α , β , γ	151.72Å 152.11Å 186.14Å 90.00° 90.00° 90.00°	Depositor
Resolution (Å)	19.85 – 2.29 19.85 – 2.29	Depositor EDS
% Data completeness (in resolution range)	97.0 (19.85-2.29) 96.7 (19.85-2.29)	Depositor EDS
R_{merge}	0.12	Depositor
R_{sym}	(Not available)	Depositor
$\langle I/\sigma(I) \rangle$ ¹	3.97 (at 2.28Å)	Xtriage
Refinement program	PHENIX (phenix.refine: 1.7_650)	Depositor
R, R_{free}	0.187 , 0.236 0.180 , 0.230	Depositor DCC
R_{free} test set	1972 reflections (2.05%)	DCC
Wilson B-factor (Å ²)	30.6	Xtriage
Anisotropy	0.407	Xtriage
Bulk solvent k_{sol} (e/Å ³), B_{sol} (Å ²)	0.33 , 30.0	EDS
L-test for twinning ²	$\langle L \rangle = 0.48$, $\langle L^2 \rangle = 0.30$	Xtriage
Estimated twinning fraction	0.468 for -k,-h,-l	Xtriage
F_o, F_c correlation	0.95	EDS
Total number of atoms	13834	wwPDB-VP
Average B, all atoms (Å ²)	36.0	wwPDB-VP

Xtriage's analysis on translational NCS is as follows: *The largest off-origin peak in the Patterson function is 3.61% of the height of the origin peak. No significant pseudotranslation is detected.*

¹Intensities estimated from amplitudes.

²Theoretical values of $\langle |L| \rangle$, $\langle L^2 \rangle$ for acentric reflections are 0.5, 0.333 respectively for untwinned datasets, and 0.375, 0.2 for perfectly twinned datasets.

5 Model quality [i](#)

5.1 Standard geometry [i](#)

Bond lengths and bond angles in the following residue types are not validated in this section: 0HD

The Z score for a bond length (or angle) is the number of standard deviations the observed value is removed from the expected value. A bond length (or angle) with $|Z| > 5$ is considered an outlier worth inspection. RMSZ is the root-mean-square of all Z scores of the bond lengths (or angles).

Mol	Chain	Bond lengths		Bond angles	
		RMSZ	$\# Z > 5$	RMSZ	$\# Z > 5$
1	A	0.44	0/3287	0.61	0/4441
1	B	0.41	0/3305	0.60	0/4465
1	C	0.45	0/3287	0.60	1/4441 (0.0%)
1	D	0.41	0/3305	0.59	0/4465
All	All	0.43	0/13184	0.60	1/17812 (0.0%)

Chiral center outliers are detected by calculating the chiral volume of a chiral center and verifying if the center is modelled as a planar moiety or with the opposite hand. A planarity outlier is detected by checking planarity of atoms in a peptide group, atoms in a mainchain group or atoms of a sidechain that are expected to be planar.

Mol	Chain	#Chirality outliers	#Planarity outliers
1	D	0	1

There are no bond length outliers.

All (1) bond angle outliers are listed below:

Mol	Chain	Res	Type	Atoms	Z	Observed($^{\circ}$)	Ideal($^{\circ}$)
1	C	253	GLY	N-CA-C	5.40	126.61	113.10

There are no chirality outliers.

All (1) planarity outliers are listed below:

Mol	Chain	Res	Type	Group
1	D	303	ASN	Peptide

5.2 Too-close contacts ⓘ

In the following table, the Non-H and H(model) columns list the number of non-hydrogen atoms and hydrogen atoms in the chain respectively. The H(added) column lists the number of hydrogen atoms added and optimized by MolProbity. The Clashes column lists the number of clashes within the asymmetric unit, whereas Symm-Clashes lists symmetry related clashes.

Mol	Chain	Non-H	H(model)	H(added)	Clashes	Symm-Clashes
1	A	3211	0	3111	70	0
1	B	3228	0	3125	84	0
1	C	3211	0	3111	73	0
1	D	3228	0	3125	77	0
2	A	21	0	16	0	0
2	B	21	0	16	1	0
2	C	21	0	16	0	0
2	D	21	0	16	1	0
3	A	242	0	0	4	0
3	B	191	0	0	3	0
3	C	228	0	0	6	0
3	D	211	0	0	11	0
All	All	13834	0	12536	290	0

The all-atom clashscore is defined as the number of clashes found per 1000 atoms (including hydrogen atoms). The all-atom clashscore for this structure is 11.

All (290) close contacts within the same asymmetric unit are listed below, sorted by their clash magnitude.

Atom-1	Atom-2	Interatomic distance (Å)	Clash overlap (Å)
1:B:230:ARG:HG3	1:B:254:TYR:CD1	1.80	1.16
1:B:230:ARG:HG3	1:B:254:TYR:CE1	1.95	1.00
1:B:230:ARG:HG3	1:B:254:TYR:HD1	1.32	0.93
1:D:172:GLU:OE2	1:D:305:ILE:HG13	1.71	0.89
1:A:381:PHE:HD2	1:A:381:PHE:O	1.56	0.88
1:B:74:GLU:O	1:B:96:LYS:HE2	1.75	0.85
1:D:372:GLU:CD	1:D:372:GLU:H	1.80	0.84
1:C:200:LYS:NZ	1:C:237:THR:HG21	1.94	0.83
1:A:200:LYS:NZ	1:A:237:THR:HG21	1.94	0.82
1:B:372:GLU:CD	1:B:372:GLU:H	1.82	0.81
1:A:316:PHE:O	1:A:323:ARG:HD2	1.80	0.81
1:A:147:ARG:HH12	1:A:380:THR:HG22	1.46	0.80
1:C:379:GLU:CD	1:C:380:THR:H	1.86	0.79
1:A:147:ARG:NH1	1:A:380:THR:HG22	2.00	0.77
1:D:230:ARG:HB2	1:D:254:TYR:CD1	2.19	0.76

Continued on next page...

Continued from previous page...

Atom-1	Atom-2	Interatomic distance (Å)	Clash overlap (Å)
1:D:231:CYS:SG	1:D:233:THR:HG22	2.25	0.75
1:A:62:THR:HG23	3:A:622:HOH:O	1.85	0.74
1:C:66:ILE:CD1	1:D:25:VAL:HG11	2.17	0.73
1:B:230:ARG:CG	1:B:254:TYR:CD1	2.69	0.73
1:C:381:PHE:CD1	1:C:382:PRO:CD	2.72	0.73
1:A:8:GLU:O	1:A:12:GLU:HG2	1.89	0.73
1:C:381:PHE:CD1	1:C:382:PRO:HD2	2.25	0.72
1:B:198:ASP:HB2	3:B:678:HOH:O	1.89	0.72
1:A:65:LYS:HE2	1:A:69:LEU:HD11	1.72	0.71
1:A:66:ILE:CD1	1:B:25:VAL:HG11	2.21	0.71
1:A:380:THR:O	1:A:381:PHE:CG	2.44	0.70
1:B:230:ARG:CG	1:B:254:TYR:HD1	2.02	0.70
1:B:230:ARG:HH22	1:B:251:GLY:C	1.93	0.70
1:C:178:TYR:O	1:C:182:VAL:HG23	1.92	0.69
1:D:276:THR:CG2	3:D:612:HOH:O	2.40	0.69
1:C:79:VAL:HG11	1:C:363:ILE:HG13	1.76	0.68
1:C:38:VAL:HG21	1:C:63:ILE:HG13	1.75	0.68
1:C:66:ILE:HD11	1:D:25:VAL:HG11	1.75	0.68
1:B:372:GLU:HG2	1:B:373:GLU:H	1.59	0.68
1:D:372:GLU:HG2	1:D:373:GLU:H	1.59	0.68
1:D:128:MET:HE2	1:D:153:MET:HG2	1.76	0.68
1:A:381:PHE:O	1:A:381:PHE:CD2	2.45	0.67
1:C:62:THR:HG23	3:C:652:HOH:O	1.93	0.67
1:B:230:ARG:NH1	1:B:253:GLY:HA2	2.10	0.67
1:A:380:THR:O	1:A:381:PHE:CD2	2.48	0.67
1:A:80:LYS:HD3	1:A:365:THR:HG21	1.78	0.66
1:A:384:PRO:HB3	1:A:388:VAL:HG23	1.79	0.65
1:B:115:ARG:HB2	1:B:115:ARG:NH1	2.12	0.65
1:C:200:LYS:HZ3	1:C:237:THR:HG21	1.61	0.64
1:D:198:ASP:HB2	3:D:679:HOH:O	1.97	0.64
1:C:34:LEU:HG	1:C:63:ILE:HD11	1.78	0.64
1:D:105:LYS:HD2	2:D:501:OHD:C09	2.27	0.64
1:A:178:TYR:O	1:A:182:VAL:HG23	1.97	0.63
1:B:235:VAL:HG13	1:B:236:GLY:N	2.14	0.63
1:D:147:ARG:HD3	1:D:378:GLU:HG2	1.79	0.63
1:D:223:MET:HB3	1:D:227:GLY:HA2	1.81	0.63
1:C:115:ARG:O	1:C:116:SER:HB2	1.97	0.63
1:D:276:THR:HG23	3:D:612:HOH:O	1.98	0.63
1:B:128:MET:HE2	1:B:153:MET:HG2	1.81	0.63
1:A:377:GLU:CG	1:A:378:GLU:H	2.11	0.62
1:A:200:LYS:HZ3	1:A:237:THR:HG21	1.60	0.62

Continued on next page...

Continued from previous page...

Atom-1	Atom-2	Interatomic distance (Å)	Clash overlap (Å)
1:A:66:ILE:HD11	1:B:25:VAL:HG11	1.80	0.62
1:C:118:SER:O	1:C:121:PHE:CE2	2.52	0.62
1:B:161:LEU:HD23	1:B:267:PHE:HZ	1.64	0.61
1:A:118:SER:O	1:A:121:PHE:CE2	2.54	0.61
1:C:381:PHE:CD1	1:C:382:PRO:HD3	2.35	0.61
1:A:8:GLU:N	3:A:705:HOH:O	2.33	0.61
1:A:399:TYR:O	1:A:400:TYR:HD1	1.83	0.61
1:A:25:VAL:HG21	1:B:66:ILE:HD11	1.82	0.61
1:B:172:GLU:OE2	1:B:305:ILE:HG13	2.01	0.60
1:A:378:GLU:O	1:A:379:GLU:HB3	2.01	0.60
1:C:110:PHE:HD1	1:C:381:PHE:CD1	2.19	0.60
1:A:379:GLU:O	1:A:380:THR:HB	2.02	0.60
1:D:94:ARG:HD2	1:D:99:ARG:HH11	1.67	0.60
1:B:165:MET:HE3	1:B:271:MET:HA	1.83	0.59
1:C:377:GLU:CG	1:C:378:GLU:H	2.15	0.59
1:C:399:TYR:O	1:C:400:TYR:HD1	1.86	0.59
1:A:14:MET:CE	1:A:14:MET:HA	2.33	0.59
1:B:237:THR:HG22	1:B:239:ASP:H	1.68	0.59
1:D:230:ARG:HB2	1:D:254:TYR:CE1	2.38	0.59
1:B:161:LEU:HD23	1:B:267:PHE:CZ	2.38	0.58
1:B:230:ARG:HG3	1:B:254:TYR:HE1	1.65	0.58
1:B:258:GLU:HG2	3:B:784:HOH:O	2.03	0.57
1:C:69:LEU:HA	1:D:10:ARG:HG2	1.85	0.57
1:D:351:THR:HG22	1:D:352:VAL:O	2.04	0.57
1:D:365:THR:CG2	1:D:365:THR:O	2.52	0.57
1:A:79:VAL:HG11	1:A:363:ILE:HG13	1.86	0.57
1:A:14:MET:HE2	1:B:69:LEU:HD12	1.85	0.57
1:D:258:GLU:HG2	3:D:761:HOH:O	2.04	0.57
1:A:380:THR:HG23	1:A:381:PHE:N	2.20	0.57
1:B:105:LYS:HD2	2:B:501:OHD:C09	2.35	0.56
1:C:244:GLU:HG2	1:C:320:ARG:HD3	1.87	0.56
1:D:38:VAL:HG21	1:D:63:ILE:HG12	1.87	0.56
1:D:230:ARG:HH11	1:D:253:GLY:HA2	1.70	0.56
1:A:200:LYS:HZ2	1:A:237:THR:HG21	1.71	0.56
1:C:25:VAL:HG21	1:D:66:ILE:HD11	1.87	0.56
1:C:377:GLU:HG3	1:C:378:GLU:H	1.70	0.56
1:C:116:SER:O	1:C:117:ASP:C	2.44	0.55
1:C:110:PHE:CD1	1:C:381:PHE:CD1	2.95	0.55
1:C:384:PRO:HB3	1:C:388:VAL:HG23	1.87	0.55
1:A:365:THR:O	1:A:365:THR:CG2	2.54	0.55
1:B:363:ILE:HG23	1:B:363:ILE:O	2.06	0.55

Continued on next page...

Continued from previous page...

Atom-1	Atom-2	Interatomic distance (Å)	Clash overlap (Å)
1:C:87:PHE:CE2	1:C:117:ASP:OD2	2.59	0.55
1:C:105:LYS:HD2	1:C:151:MET:CE	2.37	0.54
1:D:230:ARG:HB2	1:D:254:TYR:HD1	1.69	0.54
1:A:14:MET:CE	1:B:69:LEU:HD12	2.36	0.54
1:C:39:TYR:CE1	1:C:146:ASP:HB3	2.43	0.54
1:D:29:CYS:O	1:D:32:ASP:HB2	2.07	0.54
1:D:92:LEU:HD22	3:D:688:HOH:O	2.07	0.54
1:A:377:GLU:HG3	1:A:378:GLU:H	1.71	0.54
1:C:225:LYS:HG2	3:C:808:HOH:O	2.07	0.54
1:C:198:ASP:OD1	1:C:237:THR:HG23	2.08	0.54
1:D:266:VAL:HG13	1:D:277:PRO:HD2	1.90	0.54
1:A:39:TYR:CE1	1:A:146:ASP:HB3	2.44	0.53
1:D:80:LYS:HD2	3:D:749:HOH:O	2.08	0.53
1:B:351:THR:HG22	1:B:352:VAL:O	2.09	0.53
1:C:160:ASP:HB3	1:C:205:LEU:HD23	1.90	0.53
1:D:235:VAL:HG23	1:D:235:VAL:O	2.09	0.53
1:B:268:LEU:HD13	1:B:313:ILE:HG13	1.91	0.53
1:B:266:VAL:HG13	1:B:277:PRO:HD2	1.90	0.52
1:B:80:LYS:NZ	1:B:370:ASP:HB3	2.24	0.52
1:B:346:GLU:CD	1:B:346:GLU:H	2.13	0.52
1:D:292:ASN:HB3	3:D:687:HOH:O	2.09	0.52
1:A:14:MET:HA	1:A:14:MET:HE2	1.92	0.52
1:B:245:VAL:O	1:B:249:GLN:HG2	2.10	0.52
1:D:225:LYS:NZ	3:D:787:HOH:O	2.36	0.52
1:D:363:ILE:HG23	1:D:363:ILE:O	2.09	0.52
1:D:46:LEU:HD23	1:D:46:LEU:N	2.24	0.52
1:A:112:MET:O	1:A:116:SER:O	2.28	0.51
1:B:161:LEU:CD2	1:B:267:PHE:HZ	2.23	0.51
1:C:346:GLU:H	1:C:346:GLU:CD	2.08	0.51
1:D:128:MET:HE1	1:D:153:MET:SD	2.50	0.51
1:D:189:ILE:HD11	1:D:217:PHE:HE1	1.75	0.51
1:D:280:ALA:HB2	1:D:289:LYS:HE2	1.92	0.51
1:A:66:ILE:HD12	1:B:25:VAL:HG11	1.92	0.51
1:D:346:GLU:H	1:D:346:GLU:CD	2.12	0.51
1:D:72:LYS:NZ	1:D:75:ASP:OD1	2.43	0.51
1:A:381:PHE:C	1:A:381:PHE:CD2	2.84	0.51
1:A:374:ASP:O	1:A:375:LYS:HB3	2.10	0.51
1:A:198:ASP:OD1	1:A:237:THR:HG23	2.11	0.51
1:B:305:ILE:HD11	3:B:680:HOH:O	2.10	0.51
1:C:12:GLU:HA	1:C:12:GLU:OE2	2.10	0.50
1:D:161:LEU:HD23	1:D:267:PHE:HZ	1.76	0.50

Continued on next page...

Continued from previous page...

Atom-1	Atom-2	Interatomic distance (Å)	Clash overlap (Å)
1:B:115:ARG:HB2	1:B:115:ARG:CZ	2.42	0.50
1:A:12:GLU:OE2	1:A:12:GLU:HA	2.13	0.49
1:C:200:LYS:HZ2	1:C:237:THR:HG21	1.73	0.49
1:C:8:GLU:HB2	3:C:663:HOH:O	2.12	0.49
1:D:268:LEU:HD13	1:D:313:ILE:HG13	1.94	0.49
1:A:162:VAL:HG23	1:A:201:PRO:HB2	1.93	0.49
1:A:399:TYR:C	1:A:400:TYR:HD1	2.16	0.48
1:C:8:GLU:HG3	3:C:695:HOH:O	2.13	0.48
1:D:172:GLU:HG3	1:D:305:ILE:HD11	1.96	0.48
1:C:399:TYR:C	1:C:400:TYR:HD1	2.17	0.48
1:D:161:LEU:CD2	1:D:267:PHE:HZ	2.26	0.48
1:C:379:GLU:CG	1:C:380:THR:N	2.77	0.48
1:D:34:LEU:HG	1:D:63:ILE:HD11	1.96	0.48
1:A:251:GLY:O	1:A:252:ASP:HB2	2.14	0.48
1:B:372:GLU:O	1:B:373:GLU:HB2	2.13	0.48
1:A:110:PHE:HE2	1:A:114:LYS:HD2	1.79	0.48
1:D:374:ASP:C	1:D:376:GLY:H	2.16	0.48
1:C:112:MET:O	1:C:116:SER:O	2.32	0.47
1:D:84:ARG:NH1	1:D:89:GLU:OE1	2.48	0.47
1:B:276:THR:HB	1:B:277:PRO:HD2	1.95	0.47
1:A:377:GLU:CD	1:A:378:GLU:H	2.18	0.47
1:B:79:VAL:HG11	1:B:363:ILE:HG13	1.96	0.47
1:D:305:ILE:HG13	1:D:306:SER:H	1.79	0.47
1:A:365:THR:O	1:A:365:THR:HG23	2.15	0.47
1:B:170:VAL:HA	1:B:171:PRO:HD2	1.82	0.47
1:B:85:GLY:O	1:B:86:ALA:HB3	2.13	0.47
1:D:279:TYR:O	1:D:289:LYS:HE3	2.14	0.47
1:B:80:LYS:HD3	1:B:365:THR:HG21	1.96	0.47
1:A:363:ILE:HA	1:A:363:ILE:HD12	1.55	0.46
1:B:230:ARG:NH2	1:B:251:GLY:C	2.65	0.46
1:A:363:ILE:O	1:A:363:ILE:HG23	2.14	0.46
1:B:281:ASP:N	1:B:281:ASP:OD1	2.33	0.46
1:B:374:ASP:C	1:B:376:GLY:H	2.18	0.46
1:D:302:ASP:O	1:D:303:ASN:HB2	2.15	0.46
1:A:110:PHE:CE2	1:A:114:LYS:HD2	2.50	0.46
1:B:46:LEU:N	1:B:46:LEU:HD23	2.30	0.46
1:C:20:ASP:HB3	1:C:23:SER:HB2	1.98	0.46
1:C:363:ILE:HG23	1:C:363:ILE:O	2.15	0.46
1:D:60:LYS:HB3	1:D:60:LYS:HE2	1.74	0.46
1:D:365:THR:HG22	1:D:365:THR:O	2.15	0.46
1:B:351:THR:HG22	1:B:352:VAL:N	2.30	0.46

Continued on next page...

Continued from previous page...

Atom-1	Atom-2	Interatomic distance (Å)	Clash overlap (Å)
1:B:54:ASN:O	1:B:58:ARG:HG3	2.15	0.46
1:D:305:ILE:O	1:D:306:SER:C	2.54	0.46
1:A:377:GLU:CG	1:A:378:GLU:N	2.78	0.45
1:B:305:ILE:HA	1:B:305:ILE:HD12	1.81	0.45
1:C:392:LEU:N	1:C:393:PRO:HD2	2.31	0.45
1:D:363:ILE:CG2	1:D:363:ILE:O	2.64	0.45
1:B:223:MET:HB3	1:B:227:GLY:HA2	1.99	0.45
1:C:383:ILE:HA	1:C:384:PRO:HD3	1.82	0.45
1:D:230:ARG:CB	1:D:254:TYR:CE1	2.99	0.45
1:B:94:ARG:NH2	1:B:363:ILE:HD13	2.31	0.45
1:D:19:ARG:HB2	1:D:19:ARG:HE	1.62	0.45
1:A:381:PHE:HD2	1:A:381:PHE:C	2.13	0.45
1:B:29:CYS:O	1:B:32:ASP:HB2	2.17	0.45
1:C:69:LEU:HB2	1:D:14:MET:CE	2.47	0.45
1:D:98:THR:C	1:D:99:ARG:HG2	2.38	0.44
1:B:363:ILE:O	1:B:363:ILE:CG2	2.65	0.44
1:B:94:ARG:HD2	1:B:99:ARG:NH1	2.32	0.44
1:A:110:PHE:CG	1:A:380:THR:OG1	2.67	0.44
1:B:228:MET:HE3	1:B:254:TYR:HB3	2.00	0.44
1:D:94:ARG:CD	1:D:99:ARG:HH11	2.28	0.44
1:B:62:THR:HA	1:B:65:LYS:HE3	2.00	0.44
1:D:194:PHE:CE2	1:D:222:LYS:HG3	2.53	0.44
1:B:62:THR:HG22	1:B:66:ILE:HD13	2.00	0.44
1:D:117:ASP:HB2	3:D:632:HOH:O	2.16	0.44
1:D:365:THR:HG22	3:D:617:HOH:O	2.17	0.44
1:B:128:MET:HE1	1:B:153:MET:SD	2.57	0.44
1:D:49:ASN:OD1	1:D:51:ASN:HB2	2.18	0.44
1:A:105:LYS:HD2	1:A:151:MET:CE	2.48	0.44
1:C:110:PHE:CD1	1:C:381:PHE:HD1	2.35	0.44
1:C:69:LEU:HB2	1:D:14:MET:HE2	2.00	0.44
1:C:363:ILE:HD12	1:C:363:ILE:HA	1.67	0.43
1:A:399:TYR:C	1:A:400:TYR:CD1	2.92	0.43
1:C:137:VAL:HG13	1:C:154:GLU:HG2	1.99	0.43
1:A:378:GLU:OE2	1:A:379:GLU:N	2.52	0.43
1:A:60:LYS:O	1:A:63:ILE:HG22	2.18	0.43
1:A:69:LEU:HB2	1:B:14:MET:CE	2.48	0.43
1:C:374:ASP:O	1:C:375:LYS:HB3	2.19	0.43
1:D:392:LEU:N	1:D:393:PRO:CD	2.81	0.43
1:B:231:CYS:SG	1:B:248:SER:OG	2.76	0.43
1:B:149:LEU:HD22	1:B:397:PHE:CD1	2.53	0.43
1:C:66:ILE:HD12	1:D:25:VAL:HG11	1.95	0.43

Continued on next page...

Continued from previous page...

Atom-1	Atom-2	Interatomic distance (Å)	Clash overlap (Å)
1:D:327:ASN:HB2	1:D:331:GLU:CD	2.39	0.43
1:C:377:GLU:CG	1:C:378:GLU:N	2.80	0.43
1:A:301:ASP:HA	1:A:302:ASP:HA	1.78	0.43
1:C:87:PHE:CZ	1:C:117:ASP:OD2	2.72	0.43
1:D:278:PHE:HB2	3:D:612:HOH:O	2.17	0.43
1:A:101:VAL:HG11	1:A:363:ILE:HD13	2.01	0.43
1:A:160:ASP:HB3	1:A:205:LEU:HD23	2.01	0.42
1:B:196:HIS:O	1:B:197:ARG:HB2	2.19	0.42
1:B:74:GLU:O	1:B:96:LYS:CE	2.58	0.42
1:C:189:ILE:HD11	1:C:217:PHE:HE1	1.83	0.42
1:C:178:TYR:CZ	1:C:354:PRO:HG2	2.55	0.42
1:C:371:LEU:HD23	1:C:371:LEU:HA	1.94	0.42
1:C:399:TYR:C	1:C:400:TYR:CD1	2.93	0.42
1:A:137:VAL:HG13	1:A:154:GLU:HG2	2.00	0.42
1:A:189:ILE:HD11	1:A:217:PHE:HE1	1.82	0.42
1:A:178:TYR:CZ	1:A:354:PRO:HG2	2.53	0.42
1:A:65:LYS:HD2	3:A:669:HOH:O	2.19	0.42
1:B:305:ILE:O	1:B:306:SER:C	2.57	0.42
1:A:76:TYR:CD2	1:A:104:MET:HE1	2.53	0.42
1:C:8:GLU:N	1:C:8:GLU:OE2	2.52	0.42
1:B:137:VAL:HG21	1:B:215:ALA:HB2	2.00	0.42
1:C:13:LYS:NZ	1:C:17:LEU:HD21	2.34	0.42
1:D:74:GLU:O	1:D:96:LYS:NZ	2.45	0.42
1:C:156:MET:SD	1:C:213:LYS:HD2	2.59	0.42
1:B:104:MET:CE	1:B:152:VAL:HG22	2.49	0.42
1:B:23:SER:O	1:B:26:ASN:ND2	2.53	0.42
1:B:299:PHE:HB3	1:B:300:PRO:HD2	2.02	0.42
1:B:346:GLU:CD	1:B:346:GLU:N	2.73	0.42
1:C:164:LEU:C	1:C:164:LEU:HD23	2.40	0.42
1:C:63:ILE:HA	1:C:63:ILE:HD13	1.70	0.42
1:C:261:TRP:HA	1:C:261:TRP:CE3	2.54	0.42
1:D:107:LEU:HB2	1:D:149:LEU:HB2	2.02	0.42
1:D:59:TYR:O	1:D:63:ILE:HB	2.19	0.42
1:B:235:VAL:HG13	1:B:236:GLY:H	1.84	0.42
1:C:139:LEU:HD12	1:C:151:MET:HB3	2.01	0.42
1:C:381:PHE:HD1	1:C:382:PRO:HD3	1.81	0.42
1:D:372:GLU:O	1:D:373:GLU:HB2	2.19	0.42
1:B:240:TYR:CD2	1:B:240:TYR:N	2.88	0.41
1:B:60:LYS:HE2	1:B:60:LYS:HB3	1.83	0.41
1:D:228:MET:HE3	1:D:254:TYR:HB3	2.02	0.41
1:C:392:LEU:N	1:C:393:PRO:CD	2.83	0.41

Continued on next page...

Continued from previous page...

Atom-1	Atom-2	Interatomic distance (Å)	Clash overlap (Å)
1:B:66:ILE:HG22	1:B:67:ARG:N	2.34	0.41
1:D:128:MET:CE	1:D:153:MET:SD	3.08	0.41
1:D:170:VAL:HA	1:D:171:PRO:HD2	1.90	0.41
1:C:189:ILE:CD1	1:C:217:PHE:HE1	2.34	0.41
1:C:8:GLU:CB	3:C:663:HOH:O	2.66	0.41
1:C:301:ASP:HB3	3:C:742:HOH:O	2.21	0.41
1:A:20:ASP:HB3	1:A:23:SER:HB2	2.02	0.41
1:B:76:TYR:CD2	1:B:104:MET:HE1	2.56	0.41
1:B:165:MET:CE	1:B:271:MET:HA	2.51	0.41
1:B:327:ASN:HB2	1:B:331:GLU:CD	2.41	0.41
1:C:81:VAL:O	1:C:371:LEU:HB2	2.20	0.41
1:C:374:ASP:O	1:C:375:LYS:CB	2.69	0.41
1:A:147:ARG:HD2	3:A:789:HOH:O	2.20	0.41
1:C:379:GLU:CD	1:C:380:THR:N	2.63	0.41
1:D:161:LEU:HD23	1:D:267:PHE:CZ	2.55	0.41
1:B:31:LEU:HD23	1:B:31:LEU:HA	1.92	0.41
1:D:351:THR:HG22	1:D:352:VAL:N	2.36	0.41
1:B:231:CYS:HB3	1:B:255:TYR:OH	2.20	0.41
1:A:258:GLU:HA	1:A:261:TRP:CD1	2.55	0.40
1:B:351:THR:CG2	1:B:352:VAL:N	2.84	0.40
1:B:392:LEU:N	1:B:393:PRO:CD	2.84	0.40
1:D:351:THR:CG2	1:D:352:VAL:N	2.83	0.40
1:C:65:LYS:HE3	1:C:65:LYS:HB2	1.75	0.40
1:B:372:GLU:N	1:B:372:GLU:CD	2.62	0.40
1:C:373:GLU:OE1	1:C:373:GLU:HA	2.21	0.40
1:A:346:GLU:H	1:A:346:GLU:CD	2.23	0.40
1:A:81:VAL:O	1:A:371:LEU:HB2	2.22	0.40
1:D:324:LEU:HG	1:D:332:ILE:HG12	2.04	0.40
1:B:41:LEU:HA	1:B:46:LEU:HD12	2.03	0.40

There are no symmetry-related clashes.

5.3 Torsion angles ⓘ

5.3.1 Protein backbone ⓘ

In the following table, the Percentiles column shows the percent Ramachandran outliers of the chain as a percentile score with respect to all X-ray entries followed by that with respect to entries of similar resolution.

The Analysed column shows the number of residues for which the backbone conformation was analysed, and the total number of residues.

Mol	Chain	Analysed	Favoured	Allowed	Outliers	Percentiles	
1	A	393/410 (96%)	378 (96%)	14 (4%)	1 (0%)	44	54
1	B	395/410 (96%)	383 (97%)	12 (3%)	0	100	100
1	C	393/410 (96%)	382 (97%)	9 (2%)	2 (0%)	32	38
1	D	395/410 (96%)	385 (98%)	10 (2%)	0	100	100
All	All	1576/1640 (96%)	1528 (97%)	45 (3%)	3 (0%)	51	62

All (3) Ramachandran outliers are listed below:

Mol	Chain	Res	Type
1	C	117	ASP
1	C	116	SER
1	A	381	PHE

5.3.2 Protein sidechains ⓘ

In the following table, the Percentiles column shows the percent sidechain outliers of the chain as a percentile score with respect to all X-ray entries followed by that with respect to entries of similar resolution.

The Analysed column shows the number of residues for which the sidechain conformation was analysed, and the total number of residues.

Mol	Chain	Analysed	Rotameric	Outliers	Percentiles	
1	A	351/365 (96%)	339 (97%)	12 (3%)	42	55
1	B	353/365 (97%)	329 (93%)	24 (7%)	18	22
1	C	351/365 (96%)	340 (97%)	11 (3%)	45	59
1	D	353/365 (97%)	333 (94%)	20 (6%)	24	30
All	All	1408/1460 (96%)	1341 (95%)	67 (5%)	30	39

All (67) residues with a non-rotameric sidechain are listed below:

Mol	Chain	Res	Type
1	A	87	PHE
1	A	115	ARG
1	A	139	LEU
1	A	237	THR
1	A	301	ASP
1	A	302	ASP
1	A	363	ILE
1	A	365	THR

Continued on next page...

Continued from previous page...

Mol	Chain	Res	Type
1	A	378	GLU
1	A	379	GLU
1	A	380	THR
1	A	381	PHE
1	B	60	LYS
1	B	61	ASP
1	B	63	ILE
1	B	105	LYS
1	B	115	ARG
1	B	225	LYS
1	B	230	ARG
1	B	231	CYS
1	B	232	ASP
1	B	235	VAL
1	B	248	SER
1	B	257	ARG
1	B	268	LEU
1	B	281	ASP
1	B	304	ASP
1	B	305	ILE
1	B	326	ARG
1	B	336	LEU
1	B	340	ASN
1	B	346	GLU
1	B	363	ILE
1	B	365	THR
1	B	372	GLU
1	B	377	GLU
1	C	8	GLU
1	C	9	THR
1	C	15	ASP
1	C	116	SER
1	C	118	SER
1	C	202	ASP
1	C	237	THR
1	C	302	ASP
1	C	363	ILE
1	C	378	GLU
1	C	381	PHE
1	D	60	LYS
1	D	61	ASP
1	D	63	ILE

Continued on next page...

Continued from previous page...

Mol	Chain	Res	Type
1	D	99	ARG
1	D	225	LYS
1	D	226	GLU
1	D	233	THR
1	D	248	SER
1	D	257	ARG
1	D	268	LEU
1	D	276	THR
1	D	301	ASP
1	D	304	ASP
1	D	336	LEU
1	D	340	ASN
1	D	346	GLU
1	D	363	ILE
1	D	372	GLU
1	D	378	GLU
1	D	402	ASN

Some sidechains can be flipped to improve hydrogen bonding and reduce clashes. All (4) such sidechains are listed below:

Mol	Chain	Res	Type
1	A	311	ASN
1	B	203	ASN
1	D	249	GLN
1	D	402	ASN

5.3.3 RNA ⓘ

There are no RNA molecules in this entry.

5.4 Non-standard residues in protein, DNA, RNA chains ⓘ

There are no non-standard protein/DNA/RNA residues in this entry.

5.5 Carbohydrates ⓘ

There are no carbohydrates in this entry.

5.6 Ligand geometry

4 ligands are modelled in this entry.

In the following table, the Counts columns list the number of bonds (or angles) for which Mogul statistics could be retrieved, the number of bonds (or angles) that are observed in the model and the number of bonds (or angles) that are defined in the chemical component dictionary. The Link column lists molecule types, if any, to which the group is linked. The Z score for a bond length (or angle) is the number of standard deviations the observed value is removed from the expected value. A bond length (or angle) with $|Z| > 2$ is considered an outlier worth inspection. RMSZ is the root-mean-square of all Z scores of the bond lengths (or angles).

Mol	Type	Chain	Res	Link	Bond lengths			Bond angles		
					Counts	RMSZ	# $ Z > 2$	Counts	RMSZ	# $ Z > 2$
2	0HD	A	501	-	21,23,23	1.50	4 (19%)	25,30,30	1.19	4 (16%)
2	0HD	B	501	-	21,23,23	1.49	4 (19%)	25,30,30	1.21	3 (12%)
2	0HD	C	501	-	21,23,23	1.46	4 (19%)	25,30,30	0.99	1 (4%)
2	0HD	D	501	-	21,23,23	1.46	4 (19%)	25,30,30	1.28	5 (20%)

In the following table, the Chirals column lists the number of chiral outliers, the number of chiral centers analysed, the number of these observed in the model and the number defined in the chemical component dictionary. Similar counts are reported in the Torsion and Rings columns. '-' means no outliers of that kind were identified.

Mol	Type	Chain	Res	Link	Chirals	Torsions	Rings
2	0HD	A	501	-	-	0/10/10/10	0/3/3/3
2	0HD	B	501	-	-	0/10/10/10	0/3/3/3
2	0HD	C	501	-	-	0/10/10/10	0/3/3/3
2	0HD	D	501	-	-	0/10/10/10	0/3/3/3

All (16) bond length outliers are listed below:

Mol	Chain	Res	Type	Atoms	Z	Observed(Å)	Ideal(Å)
2	A	501	0HD	N18-N17	-2.61	1.32	1.37
2	B	501	0HD	N18-N17	-2.61	1.32	1.37
2	C	501	0HD	N18-N17	-2.40	1.33	1.37
2	D	501	0HD	N18-N17	-2.40	1.33	1.37
2	C	501	0HD	C02-N12	2.62	1.43	1.37
2	A	501	0HD	C02-N12	2.69	1.43	1.37
2	A	501	0HD	C19-C15	2.73	1.46	1.40
2	B	501	0HD	C19-C15	2.79	1.46	1.40
2	D	501	0HD	C19-C15	2.85	1.46	1.40
2	D	501	0HD	C02-N12	2.93	1.43	1.37
2	C	501	0HD	C02-N03	2.94	1.41	1.35

Continued on next page...

Continued from previous page...

Mol	Chain	Res	Type	Atoms	Z	Observed(Å)	Ideal(Å)
2	B	501	0HD	C02-N12	2.94	1.43	1.37
2	C	501	0HD	C19-C15	3.01	1.47	1.40
2	D	501	0HD	C02-N03	3.04	1.41	1.35
2	B	501	0HD	C02-N03	3.11	1.42	1.35
2	A	501	0HD	C02-N03	3.26	1.42	1.35

All (13) bond angle outliers are listed below:

Mol	Chain	Res	Type	Atoms	Z	Observed(°)	Ideal(°)
2	D	501	0HD	O01-C02-N03	-3.02	117.12	122.62
2	B	501	0HD	O01-C02-N03	-2.68	117.74	122.62
2	D	501	0HD	C04-N03-C02	-2.22	117.46	121.72
2	A	501	0HD	O01-C02-N03	-2.08	118.84	122.62
2	D	501	0HD	C20-C16-N17	2.02	133.50	130.19
2	A	501	0HD	C05-C04-N03	2.04	116.75	111.91
2	B	501	0HD	C04-C05-C06	2.13	117.28	112.81
2	A	501	0HD	N12-C02-N03	2.16	117.49	113.91
2	D	501	0HD	C04-C05-C06	2.20	117.43	112.81
2	C	501	0HD	C04-C05-C06	2.37	117.78	112.81
2	D	501	0HD	N12-C02-N03	2.67	118.33	113.91
2	B	501	0HD	N12-C02-N03	2.69	118.37	113.91
2	A	501	0HD	C04-C05-C06	2.71	118.50	112.81

There are no chirality outliers.

There are no torsion outliers.

There are no ring outliers.

2 monomers are involved in 2 short contacts:

Mol	Chain	Res	Type	Clashes	Symm-Clashes
2	B	501	0HD	1	0
2	D	501	0HD	1	0

5.7 Other polymers [i](#)

There are no such residues in this entry.

5.8 Polymer linkage issues [i](#)

There are no chain breaks in this entry.

6 Fit of model and data

6.1 Protein, DNA and RNA chains

In the following table, the column labelled ‘#RSRZ > 2’ contains the number (and percentage) of RSRZ outliers, followed by percent RSRZ outliers for the chain as percentile scores relative to all X-ray entries and entries of similar resolution. The OWAB column contains the minimum, median, 95th percentile and maximum values of the occupancy-weighted average B-factor per residue. The column labelled ‘Q < 0.9’ lists the number of (and percentage) of residues with an average occupancy less than 0.9.

Mol	Chain	Analysed	<RSRZ>	#RSRZ>2	OWAB(Å ²)	Q<0.9
1	A	395/410 (96%)	-0.02	10 (2%) 58 64	17, 30, 61, 129	0
1	B	397/410 (96%)	0.03	9 (2%) 61 67	21, 35, 63, 96	0
1	C	395/410 (96%)	-0.05	13 (3%) 47 53	18, 30, 61, 127	0
1	D	397/410 (96%)	0.12	16 (4%) 39 45	21, 35, 65, 90	0
All	All	1584/1640 (96%)	0.02	48 (3%) 51 57	17, 32, 63, 129	0

All (48) RSRZ outliers are listed below:

Mol	Chain	Res	Type	RSRZ
1	C	376	GLY	10.1
1	A	376	GLY	7.6
1	C	377	GLU	7.2
1	A	377	GLU	6.9
1	B	302	ASP	6.7
1	A	375	LYS	6.6
1	D	302	ASP	6.4
1	A	381	PHE	5.6
1	B	301	ASP	5.5
1	D	301	ASP	5.1
1	D	233	THR	5.0
1	D	254	TYR	4.7
1	C	373	GLU	4.3
1	D	377	GLU	4.3
1	A	372	GLU	4.1
1	C	380	THR	4.0
1	B	233	THR	3.9
1	D	252	ASP	3.8
1	D	376	GLY	3.8
1	D	370	ASP	3.7
1	C	375	LYS	3.4

Continued on next page...

Continued from previous page...

Mol	Chain	Res	Type	RSRZ
1	B	375	LYS	3.2
1	D	232	ASP	3.1
1	D	235	VAL	3.1
1	B	235	VAL	3.1
1	D	61	ASP	3.0
1	C	18	LEU	3.0
1	B	304	ASP	3.0
1	D	372	GLU	2.9
1	C	85	GLY	2.9
1	B	300	PRO	2.7
1	A	379	GLU	2.6
1	C	374	ASP	2.6
1	C	15	ASP	2.5
1	C	252	ASP	2.4
1	D	304	ASP	2.4
1	D	336	LEU	2.4
1	A	378	GLU	2.3
1	B	370	ASP	2.3
1	D	234	ALA	2.3
1	D	308	GLU	2.2
1	C	378	GLU	2.2
1	B	402	ASN	2.1
1	A	380	THR	2.1
1	A	116	SER	2.1
1	C	12	GLU	2.0
1	A	371	LEU	2.0
1	C	402	ASN	2.0

6.2 Non-standard residues in protein, DNA, RNA chains [i](#)

There are no non-standard protein/DNA/RNA residues in this entry.

6.3 Carbohydrates [i](#)

There are no carbohydrates in this entry.

6.4 Ligands [i](#)

In the following table, the Atoms column lists the number of modelled atoms in the group and the number defined in the chemical component dictionary. LLDF column lists the quality of electron density of the group with respect to its neighbouring residues in protein, DNA or RNA chains.

The B-factors column lists the minimum, median, 95th percentile and maximum values of B factors of atoms in the group. The column labelled 'Q < 0.9' lists the number of atoms with occupancy less than 0.9.

Mol	Type	Chain	Res	Atoms	RSCC	RSR	LLDF	B-factors(Å ²)	Q<0.9
2	0HD	D	501	21/21	0.93	0.18	1.52	32,42,44,45	0
2	0HD	B	501	21/21	0.94	0.13	-0.11	30,43,45,47	0
2	0HD	C	501	21/21	0.96	0.12	-0.20	19,31,37,38	0
2	0HD	A	501	21/21	0.96	0.12	-0.64	20,31,37,39	0

6.5 Other polymers [i](#)

There are no such residues in this entry.